



HAL
open science

Exploring multidrug resistance patterns in community-acquired Escherichia coli urinary tract infections with machine learning

Elise Hodbert, Olivier Lemenand, Sonia Thibaut, Thomas Coeffic, David Boutoille,
Stephane Corvec, Gabriel Birgand, Laura Temime

► To cite this version:

Elise Hodbert, Olivier Lemenand, Sonia Thibaut, Thomas Coeffic, David Boutoille, et al.. Exploring multidrug resistance patterns in community-acquired Escherichia coli urinary tract infections with machine learning. *Antimicrobial Agents and Chemotherapy*, 2025, pp.e0042225. <10.1128/aac.00422-25>. <inserm-05342895>

HAL Id: inserm-05342895

<https://inserm.hal.science/inserm-05342895v1>

Submitted on 3 Nov 2025

HAL is a multi-disciplinary open access archive for the deposit and dissemination of scientific research documents, whether they are published or not. The documents may come from teaching and research institutions in France or abroad, or from public or private research centers.

L'archive ouverte pluridisciplinaire **HAL**, est destinée au dépôt et à la diffusion de documents scientifiques de niveau recherche, publiés ou non, émanant des établissements d'enseignement et de recherche français ou étrangers, des laboratoires publics ou privés.



Distributed under a Creative Commons CC BY 4.0 - Attribution - International License

Exploring multidrug resistance patterns in community-acquired *Escherichia coli* urinary tract infections with machine learning

Elise Hodbert,^{1,2} Olivier Lemenand,^{3,4} Sonia Thibaut,^{3,4} Thomas Coeffic,^{3,4} David Boutoille,^{4,5} Stephane Corvec,^{6,7} Gabriel Birgand,^{1,3,4,8} Laura Temime,^{1,9} on behalf of the French Clinical Laboratories Nationwide Network

AUTHOR AFFILIATIONS See affiliation list on p. 15.

ABSTRACT While associations of antibiotic resistance traits are not random in multidrug-resistant (MDR) bacteria, clinically relevant resistance patterns remain underexplored. This study used association-set mining to explore resistance associations within *E. coli* isolates from community-acquired urinary tract infection isolates collected from 2018 to 2022 by France's national surveillance system. Association-set mining was applied separately to extended-spectrum beta-lactamase-producing *E. coli* (ESBL-EC) and non-ESBL-EC. MDR patterns with expected support (reflecting pattern frequency) and conditional lift (reflecting association strength) higher than expected by chance (P -value ≤ 0.05) were used to construct resistance association networks and analyzed according to time, age, and gender. The number of isolates increased from 360,287 in 2018 to 629,017 in 2022. More MDR patterns were selected in ESBL-EC than non-ESBL-EC (2022: 1770 vs 93 patterns), with higher respective network densities (2022: 0.301 vs 0.100). Fluoroquinolone, third-generation cephalosporin, and penicillin resistance were strongly associated in ESBL-EC. Median network densities increased from 2018 to 2022 in both ESBL-EC (0.238–0.301, P -value = 0.06, Pearson test) and non-ESBL-EC (0.074–0.100, P -value = 0.04). Across all years, median densities were higher in men than in women (ESBL-EC 2022: 0.305 vs 0.271; non-ESBL-EC: 0.128 vs 0.094) and higher in individuals over 65 than under 65 (ESBL-EC: 0.289 vs 0.275; non-ESBL-EC: 0.103 vs 0.088). These findings highlight temporal, age-specific, and gender-specific variations in resistance patterns, underscoring the potential of machine learning to understand them and inform antibiotic strategies.

KEYWORDS machine learning, community-acquired *E. coli* urinary tract infection, multiresistance pattern, antibiotic resistance, network analysis

Antimicrobial resistance (AMR) is an increasing public health issue, notably due to the extensive use of antibiotics and increasing global mobility. Infections caused by multidrug-resistant bacteria (MDR) are challenging to treat, resulting in increased mortality, prolonged hospital stays, and higher healthcare costs (1). Initially regarded as a hospital-specific issue, AMR is now recognized as a major problem in community settings and a one-health issue (2). In 2021, AMR-associated infections were directly responsible for approximately 1.14 million deaths globally (3). Multiple studies forecast an increase in resistance to available antibiotics, which could cause more than 8 million deaths in 2050 (3). The global burden of AMR is driven by a few leading microorganisms, among which resistant *E. coli* infections caused the highest number of deaths in 2019 (4). In the community, *E. coli* accounts for 75%–90% of uncomplicated urinary tract infection (UTI) isolates (5). The proportion of extended-spectrum beta-lactamase-producing and MDR community-acquired *E. coli* UTI is rising, increasing from 2.8% in 2021 to 3.4% in 2023 (6).

MDR does not result from individual drug resistances occurring together by chance, as documented in multiple bacteria (7). Beyond selection pressure, several biological

Editor Anne-Catrin Uhlemann, Columbia University Irving Medical Center, New York, New York, USA

Address correspondence to Laura Temime, laura.temime@lecnam.net.

Gabriel Birgand and Laura Temime contributed equally to this article.

G.B. reports receiving grants from Santé Publique France during the conduct of the study. None of the other authors report any conflict of interest.

See the funding table on p. 15.

Received 17 March 2025

Accepted 1 October 2025

Published 31 October 2025

Copyright © 2025 Hodbert et al. This is an open-access article distributed under the terms of the [Creative Commons Attribution 4.0 International license](https://creativecommons.org/licenses/by/4.0/).

mechanisms are known to contribute to MDR emergence and spread in *E. coli*. Non-specific mechanisms, like efflux pumps, typically confer resistance to a wide range of antibiotics, whereas specific mechanisms, on the other hand, include notably the production of extended-spectrum-beta-lactamases and chromosomal point mutations conferring resistance to fluoroquinolone (7). MDR spreads through various pathways, most notably horizontal gene transfer (8).

However, MDR patterns and their variations across time, space, and subpopulations are not fully understood. A detailed analysis of these patterns could provide insight for optimized stewardship strategies of current antibiotics, by helping treat MDR infections with antibiotics carrying few co-resistances. Understanding temporal dynamics in multiresistance patterns may also help to better define guidelines for narrowing treatment spectrum and better preserving antibiotic efficacy over time. This is a key issue in the context of rising AMR and a limited antibiotic development pipeline.

Here, we use association-set mining, a machine-learning approach, to study MDR patterns in community-acquired *E. coli* UTIs. This method has proven effective in identifying patterns of antibiotic resistance traits in chicken-associated *E. coli*, human-associated *S. aureus*, and cattle-associated *S. enterica* (9–11). We analyze data collected over 5 years (2018–2022) by the French nationwide surveillance system of clinical laboratories, PRIMO (Surveillance and Prevention of Antibiotic Resistance in Primary Care and Nursing Homes) (12). We create graphical networks from the patterns detected by the algorithm in order to select resistance associations of interest. We then explore how these resistance associations have changed over time and perform gender- and age-stratified analyses, highlighting temporal trends and differences across subpopulations.

RESULTS

Data description

The PRIMO data sets include antibiotic susceptibility testing (AST) results, patient's age, gender, and administrative region. We restricted the analyses to data collected from *E. coli* UTIs in community laboratories between 1 January 2018 and 31 December 2022. The number of isolates increased over time, from 360,287 in 2018 to 628,993 in 2022 (Table 1; P -value = 0.01, Pearson trend test). The proportion of extended-spectrum beta-lactamases producing *E. coli* (ESBL-EC), either alone or combined with another phenotype, was comprised between 2.8% and 3.0%, with no increasing or decreasing trend across the years (P -value = 0.79, Pearson trend test). Throughout all years, between 84.0% and 84.5% of isolates came from women. Among women, the proportion of isolates coming from individuals aged 65 and older ranged from 45.6% to 49.0% (P = 0.008, Pearson trend test), whereas among men, this proportion varied between 57.7% and 62.4% (P = 0.002, Pearson trend test). The isolates came from all regions of metropolitan France, with varying proportions across the years (Fig. S1).

Individual antibiotic resistance prevalence in ESBL-EC and non-ESBL-EC

We selected antibiotics tested in the AST panels used in routine by participating clinical laboratories, with a cut-off of at least 10% of isolates tested across all years to avoid potential selection bias of antibiotics tested only on resistant strains and antibiotics rarely used in routine, which resulted in the selection of 27 antibiotics (Table S2).

Regarding penicillins, nearly all ESBL-EC were resistant to ampicillin, amoxicillin, and ticarcillin (Fig. 1A). Most ESBL-EC was resistant to second- and third-generation cephalosporins, including cefuroxime (100%, 1,535/1,535 tested in 2022), ceftriaxone (99.6%, 18,592/18,663 tested) and cefotaxime (99.6%, 18,592/18,663 tested). For fluoroquinolones, between 70% and 85% of ESBL-EC were resistant to ciprofloxacin, levofloxacin, norfloxacin, and ofloxacin. However, most ESBL-EC were sensitive to first-line antibiotics, including fosfomicin (4.9%, 834/17,180 tested), nitrofurantoin (1.9%, 348/18,259 tested), mecillinam (10.8%, 1,800/16,684 tested), and cefoxitin (11.1%, 2,035/18,380 tested).

TABLE 1 Summary of PRIMO data sets for *E. coli* UTI samples from 2018 to 2022

	2018	2019	2020	2021	2022
Total number of isolates	360,287	450,820	450,135	571,126	628,993
ESBL	10,150 (2.8%)	13,559 (3.0%)	13,265 (2.9%)	16,006 (2.8%)	18,663 (3.0%)
Non-ESBL	350,137 (97.2%)	437,261 (97.0%)	436,870 (97.1%)	555,120 (97.2%)	610,330 (97.0%)
Women	276,220 (84.5%)	356,002 (84.4%)	361,758 (84.0%)	457,789 (84.3%)	520,081 (84.1%)
65+ years old	125,575 (45.6%)	163,453 (46.1%)	173,029 (47.9%)	219,423 (48.0%)	254,994 (49.0%)
Men	50,706 (15.5%)	66,000 (15.6%)	68,730 (16.0%)	85,444 (16.7%)	98,055 (15.9%)
65+ years old	29,088 (57.7%)	38,543 (58.6%)	41,484 (60.5%)	51,873 (60.8%)	61,063 (62.4%)

Non-ESBL-EC was often resistant to penicillins, including ampicillin (41.8%, 203,547/486,592 tested), amoxicillin (42.3%, 251,107/593,743 tested), and ticarcillin (40.9%, 223,404/546,477 tested; Fig. 1B). Less than 1% of non-ESBL-EC were resistant to third-generation cephalosporins including ceftazidime, cefixime, ceftriaxone, and cefotaxime. For fluoroquinolones, between 5% and 15% of isolates were resistant to ciprofloxacin, levofloxacin, norfloxacin, and ofloxacin. Similar individual antibiotic resistance prevalences were found from 2018 to 2021 (Fig. S2).

Independence of individual resistance traits

We assessed the independence of individual resistance traits by simulating 100 data sets under the hypothesis that all resistance traits are mutually independent. We then compared the distribution of resistance counts per isolate between the observed and simulated data. In 2022, the observed distribution differed significantly from the distribution simulated under the hypothesis of independence (P -value = $6.81 \cdot 10^{-3}$, Kolmogorov-Smirnov test), suggesting that individual resistances were not independent (Fig. 2). In the observed data set, 39% of isolates were pansusceptible, compared to 9% in the simulated data set. Similar results were obtained when comparing the distribution of the number of resistances per isolate in observed and simulated data from 2018 to 2021 (Fig. S3). We also compared the distributions separately for ESBL-EC and non-ESBL-EC from 2018 to 2022 (Fig. S4), underlining that the difference was mostly driven by non-ESBL-EC.

Multiresistance pattern selection

We identified MDR patterns separately for each year and phenotype data set, using association-set mining with the *Apriori* algorithm (10, 13). We first explored the data sets to select all patterns present with a given frequency, and in a second step, we selected patterns for which two important metrics, expected support (eSup) and conditional lift (cLift), were significantly higher than expected by chance.

For ESBL-EC, the *Apriori* algorithm initially identified 52,824 patterns in 2018 and 123,116 patterns in 2022, with an increasing trend over the years (P -value = 0.01, Pearson test) (Table 2). For non-ESBL-EC, the algorithm initially generated 2,529 patterns in 2018 and 4,515 patterns in 2022, with a non-significant increasing trend (P -value = 0.06, Pearson test).

In 2022, the eSup cut-off values were 0.271 for ESBL-EC isolates and 0.034 for non-ESBL-EC, meaning that a pattern was selected if it appeared in at least 27.1% of ESBL-EC or 3.4% of non-ESBL-EC. This value was relatively stable over time for both ESBL-EC (range: 23.6%–27.1%, P -value = 0.22, Mann-Kendall test) and non-ESBL-EC (range: 2.9%–3.4%, P -value = 0.13, Mann-Kendall test).

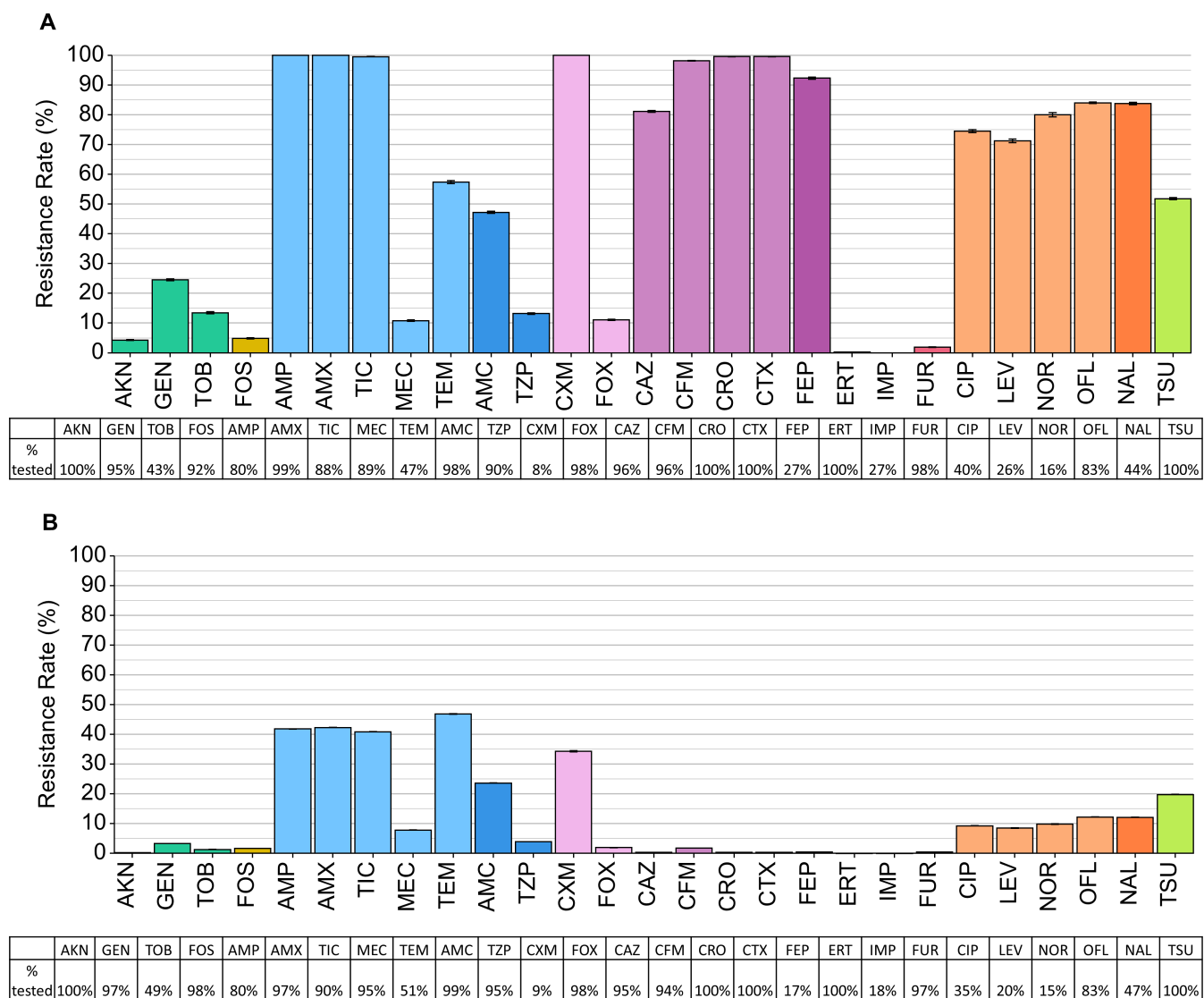


FIG 1 Resistance prevalence and AST frequency for all antibiotics in 2022 in (A) ESBL-EC and (B) non-ESBL-EC. See Table S2 for a complete list of antibiotics with their full names.

The cLift cut-off value for ESBL-EC and non-ESBL-EC was, respectively, 1.058 and 1.041 in 2022, meaning that a pattern was selected if it was 5.8% (respectively 4.1%) more frequent than expected by chance under the assumption of resistance independence in ESBL-EC (respectively non-ESBL-EC). These cut-offs were again relatively stable over time for both ESBL-EC (P -value = 0.46, Mann-Kendall test) and non-ESBL-EC (P -value = 0.09, Mann-Kendall test). Overall, this pruning step selected respectively 1,770 (1.43% of patterns) and 93 (2.06%) patterns for ESBL-EC and non-ESBL-EC in 2022. The number of selected patterns had an increasing trend from 2018 to 2022 for both ESBL-EC (P -value = 0.03, Pearson test) and non-ESBL-EC (P -value = 0.05, Pearson test).

Multiresistance pattern analyses

Resistance association networks have a higher density for ESBL-EC

We decomposed the selected MDR patterns into pairwise associations and built resistance association networks, where nodes represent antibiotics and edges represent resistance associations between two antibiotics. Resistance association networks

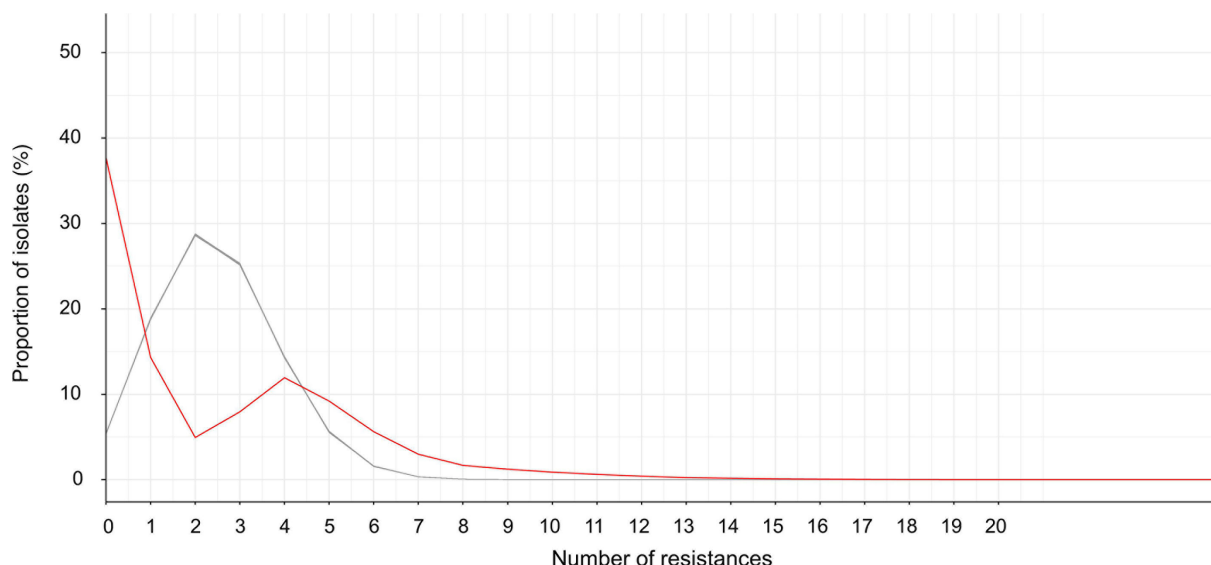


FIG 2 Distribution of the number of resistances per isolate in 2022 for all isolates. The red line represents the observed data set, and the gray line represents the simulated data sets.

were much denser in ESBL-EC than non-ESBL-EC, with densities of, respectively, 0.301 and 0.100 in 2022 (Fig. 3). As expected, resistance associations in ESBL-EC involved mainly penicillins, third-generation cephalosporins, and fluoroquinolones. In non-ESBL-EC, strong resistance associations were found between penicillins, combinations of penicillin and beta-lactamase inhibitor, and quinolones. Regarding first-line antibiotics, almost no significant association involving nitrofurantoin, fosfomycin, mecillinam, or any aminoglycoside was found in both ESBL-EC and non-ESBL-EC. However, trimethoprim/sulfamethoxazole was associated with third-generation cephalosporins in ESBL-EC and with penicillins in non-ESBL-EC.

Network density increases over time for both ESBL-EC and non-ESBL-EC

We assessed temporal changes in resistance associations network density, adjusting for increasing data set size by randomly subsampling the 2019 to 2022 data at the size of the 2018 data set. Network density increased over time, from 0.238 (0.234; 0.249) in 2018 to 0.301 (0.294; 0.302) in 2022 for ESBL-EC (*P*-value = 0.06, Pearson test), and from

TABLE 2 Number of multiresistance patterns selected by association-set mining for each year and phenotype subset^a

Phenotype	Year	No. of patterns initially generated by the <i>Apriori</i> algorithm	eSup cut-off value	cLift cut-off value	No. of patterns selected after pruning
ESBL	2018	52,736	0.257	1.076	483
	2019	86,454	0.236	1.070	1,234
	2020	106,625	0.242	1.073	1,268
	2021	115,425	0.262	1.065	1,921
	2022	123,116	0.271	1.058	1,770
Non-ESBL	2018	2,527	0.030	1.056	59
	2019	3,936	0.029	1.051	82
	2020	3,756	0.030	1.052	75
	2021	4,945	0.031	1.045	88
	2022	4,502	0.034	1.041	93

^aFor example, in 2018 ESBL-EC, 52,736 patterns were identified. Cut-off values were set at eSup ≥ 0.257 and cLift ≥ 1.076, meaning that a pattern was retained if it appeared in at least 25.7% of isolates and occurred 7.6% more frequently than expected under the assumption of independence between resistance traits. After pruning, 483 patterns were selected.

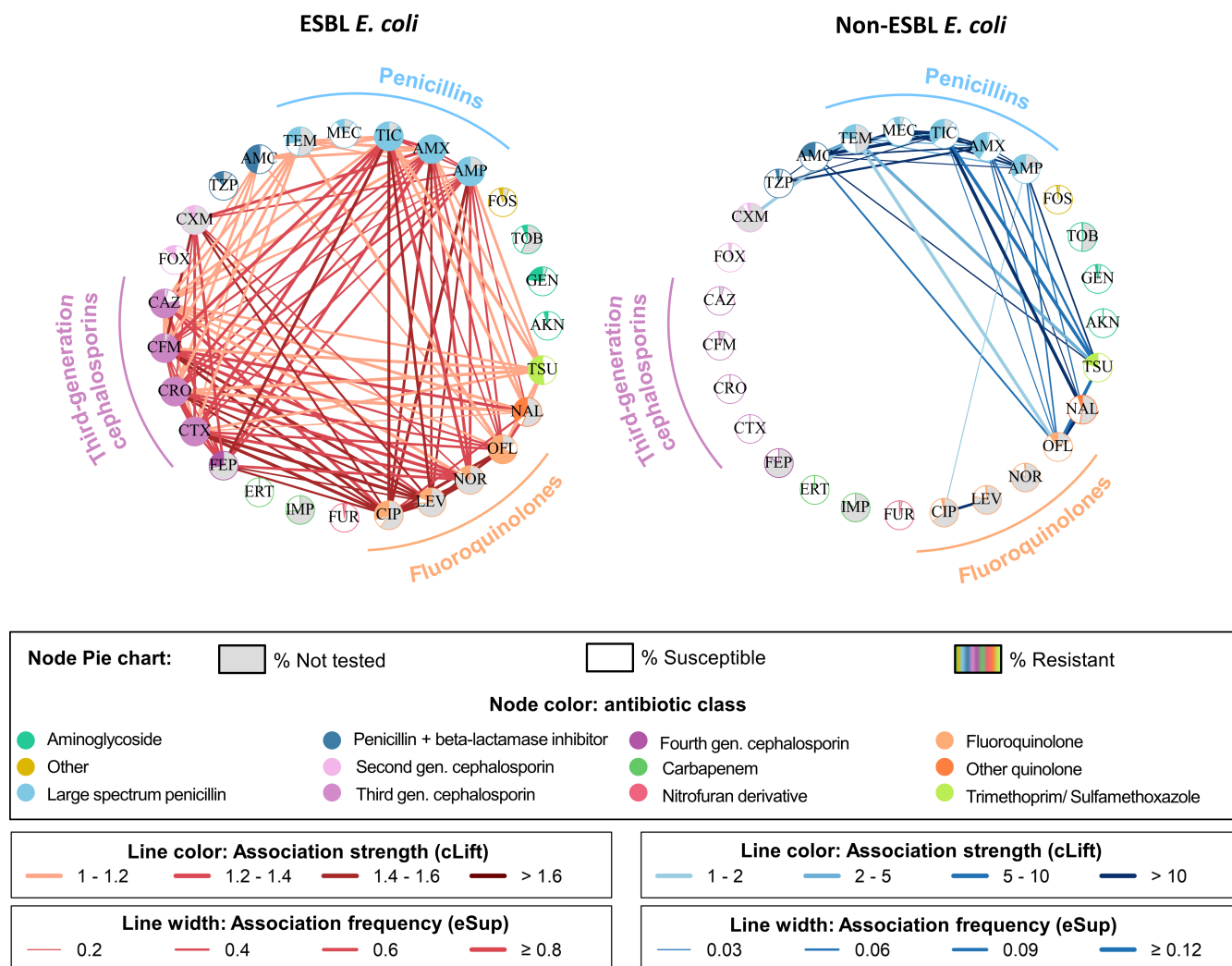


FIG 3 Networks generated from ESBLE-EC and non-ESBLE-EC in 2022. Patterns were decomposed into nodes (antibiotics) and edges (resistance associations). Node color indicates the antibiotic class. Each node includes a pie chart: Gray represents the proportion of isolates not tested for the antibiotic, white indicates susceptible isolates, and color shows the proportion of resistant isolates. Edges are darker with high cLift values, indicating that the resistance associations occur more frequently than expected under the hypothesis of independence of resistance traits. Edge width increases with high eSup values, reflecting the frequency of resistance associations. See Table S2 for a complete list of antibiotics with their full names.

0.074 (0.074; 0.074) in 2018 to 0.100 (0.100; 0.103) in 2022 for non-ESBLE-EC (P -value = 0.04, Pearson test; Fig. 4). In addition, we calculated cumulative rule stability (CRS), which quantifies the proportion of shared patterns over time (9, 14) separately for ESBLE-EC and non-ESBLE-EC from 2018 to 2022. CRS was 0.47 for ESBLE-EC and 0.70 for non-ESBLE-EC, indicating that resistance patterns were more stable over time in non-ESBLE-EC isolates.

Network density is higher in individuals 65+ years old

We also compared networks between individuals under and over 65 years old, again adjusting for different data set size through a subsampling procedure. For non-ESBLE-EC, resistance association networks were denser in individuals aged 65 and over than in individuals under 65, with median densities of respectively 0.103 (0.103; 0.105) and 0.088 (0.088; 0.091) in 2022 (Fig. 5B). For ESBLE-EC, the median network density was not significantly different between 65+ years old, at 0.289 (0.280; 0.301), and <65 years old, at 0.275 (0.261; 0.294). The ESBLE-EC networks of 65+ individuals mainly involved additional associations of cefuroxime with penicillins (amoxicillin and ampicillin), third

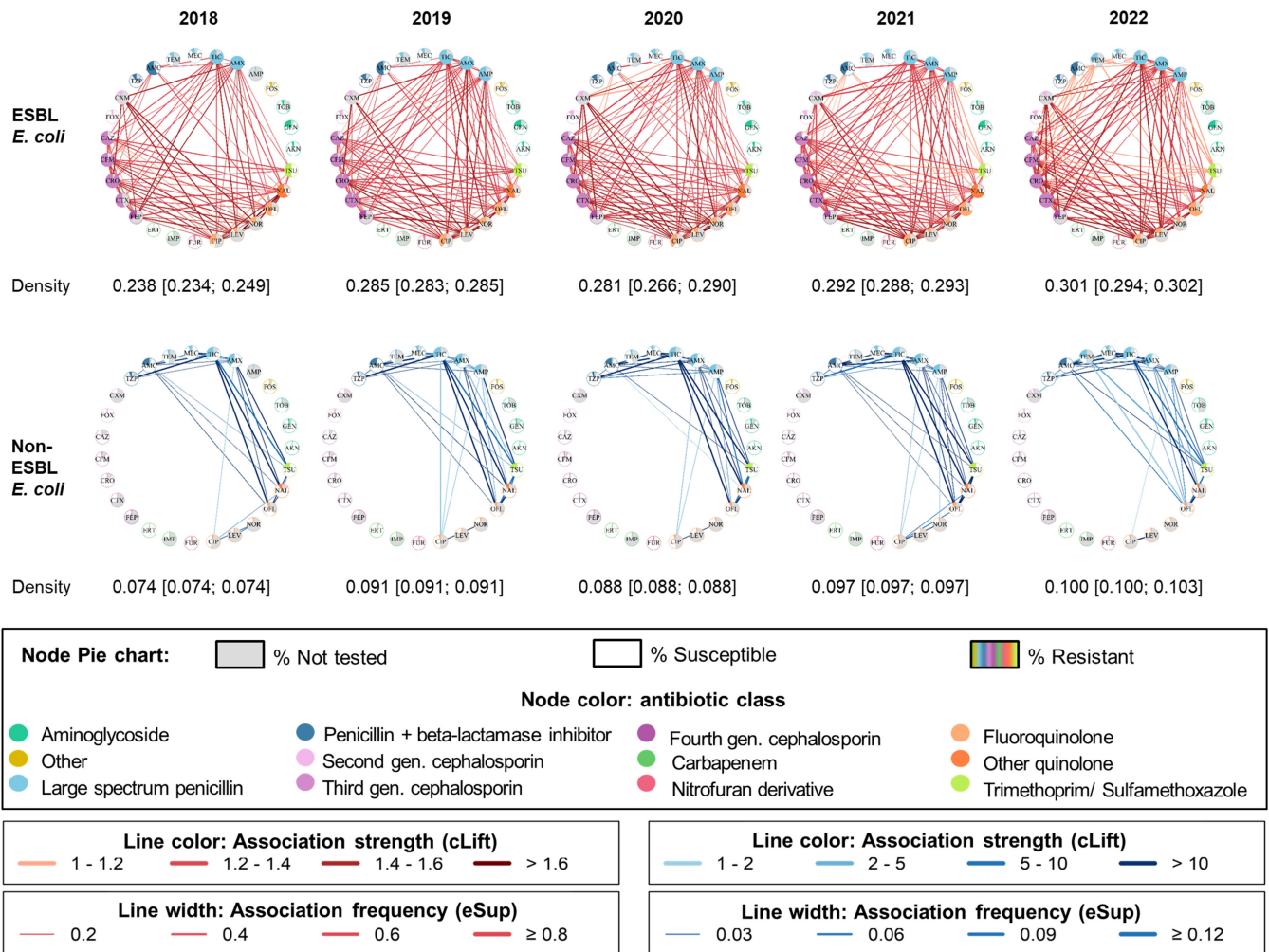


FIG 4 Networks of resistance associations from 2018 to 2022. Median density and 95% CI calculated using: (i) for 2018, 10 bootstrapped data sets; (ii) for 2019 to 2022, 10 subsamples randomly drawn to match the size of the 2018 data set. See Table S2 for a complete list of antibiotics with their full names.

and fourth generation cephalosporin (cefotaxime and cefepime), and fluoroquinolones (ciprofloxacin, levofloxacin, and norfloxacin; Fig. 5A). We calculated the rule overlap ratio (ROR), which describes the proportion of shared patterns between two datasets, between individuals under 65 and individuals aged 65 and over. In 2022, the median ROR was 0.55 (0.50–0.59) for ESBL-EC and 0.76 (0.75–0.78). Similar results were found when analyzing data from 2018 to 2021 (Fig. S5).

Network density is higher in men

We compared resistance association networks between men and women, again adjusting for different data set size through a subsampling procedure. In 2022 for ESBL-EC, network density was higher in men than in women, with respective medians of 0.305 (0.291; 0.322) and 0.271 (0.266; 0.276; Fig. 6B). The same result was observed in non-ESBL-EC, with median densities of 0.128 (0.125; 0.133) and 0.094 (0.090; 0.096) for men and women, respectively. The ESBL-EC networks of men mainly involved additional associations of cefuroxime with penicillins (amoxicillin and ampicillin), third- and fourth-generation cephalosporins (cefotaxime and cefepime), and fluoroquinolones (ciprofloxacin, levofloxacin, and norfloxacin; Fig. 6A). Similarly to age-specific comparisons, we calculated the ROR between men and women. In 2022, the median ROR between men and women was 0.35 (0.33–0.41) for ESBL-EC and 0.69 (0.67–0.70) for non-ESBL-EC. Similar results were found when analyzing data from 2018 to 2021 (Fig. S6).

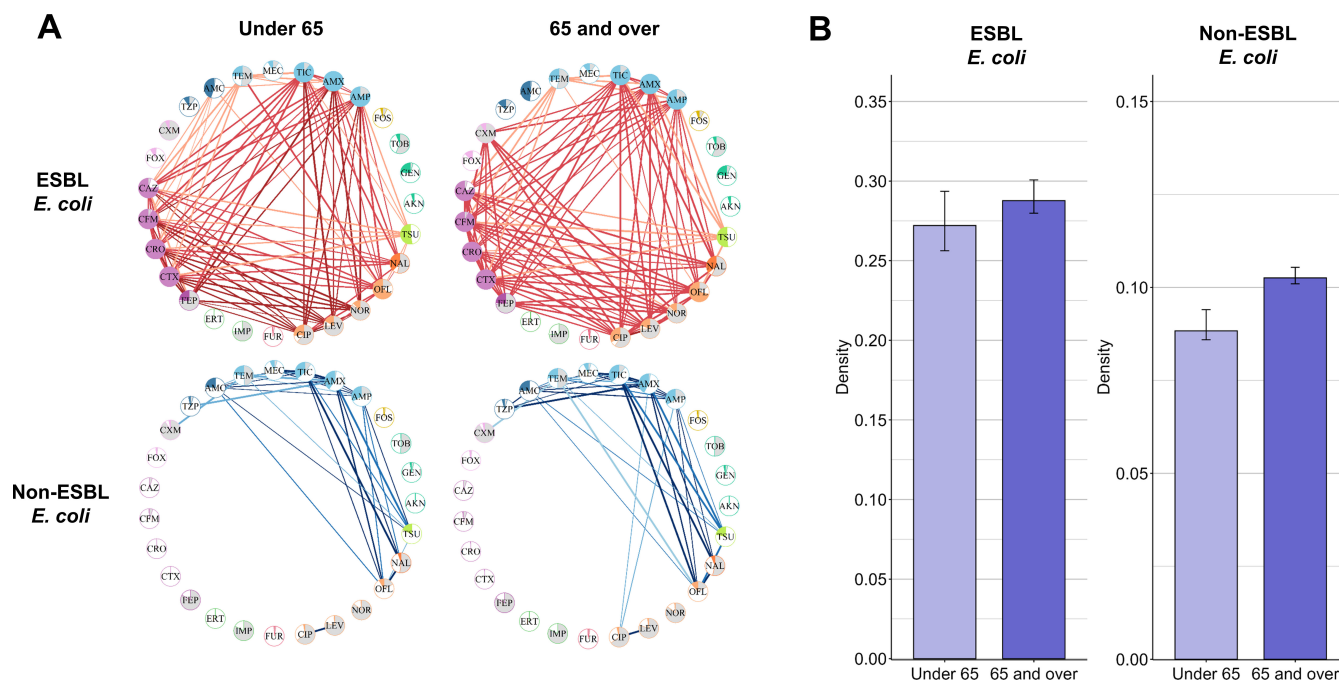


FIG 5 (A) Networks of resistance associations for individuals under 65 and individuals 65 and over in 2022. (B) Bar plots of median network density for both age groups. Error bars indicate confidence interval: for individuals over 65, calculated using 10 subsamples randomly generated at the size of the data set of individuals under 65; for individuals under 65, calculated using 10 bootstrapped data sets from the complete data set of individuals under 65. See Table S2 for a complete list of antibiotics with their full names.

Sensitivity analysis

To investigate the impact of regional contribution variations on our results (Fig. S1), we conducted analyses on resampled data sets in which the relative contribution of each region was constant over time and proportional to its population (Fig. S7). As in the main analysis, networks reconstructed for ESBL-EC isolates were much denser than for non-ESBL-EC. For ESBL-EC, a significant increase in density was again observed over time, from 0.240 to 0.300 (P -value = 0.004, Pearson test), although this was not the case anymore for non-ESBL-EC.

In addition, to evaluate the influence of the arbitrary criterion used for antibiotic selection, we performed the analyses with a stricter criterion requiring each antibiotic to be tested on at least 10% of isolates in each year. The resistance associations identified were consistent with those in the main analysis (Fig. S8).

DISCUSSION

In this study, we identified resistance associations in community-acquired UTI *E. coli* isolates, using a large French surveillance database. Across all years, and as expected, ESBL-EC showed a higher number of resistance associations, particularly involving penicillins, fluoroquinolones, and third-generation cephalosporins. In both ESBL and non-ESBL-EC, the number of resistance associations increased from 2018 to 2022, and men and individuals aged 65 and over showed more resistance associations across all years.

We compared the observed distribution of the number of resistances per isolate with a simulated data set assuming the hypothesis of mutual independence of resistance traits (10) and found significant differences in non-ESBL-EC. This finding aligns with Chang et al., 2015 (7), which reported that MDR occurred at frequencies inconsistent with the hypothesis of mutual independence of resistance traits for multiple bacteria including *E. coli* (7). It provides further evidence for biological or genetic mechanisms

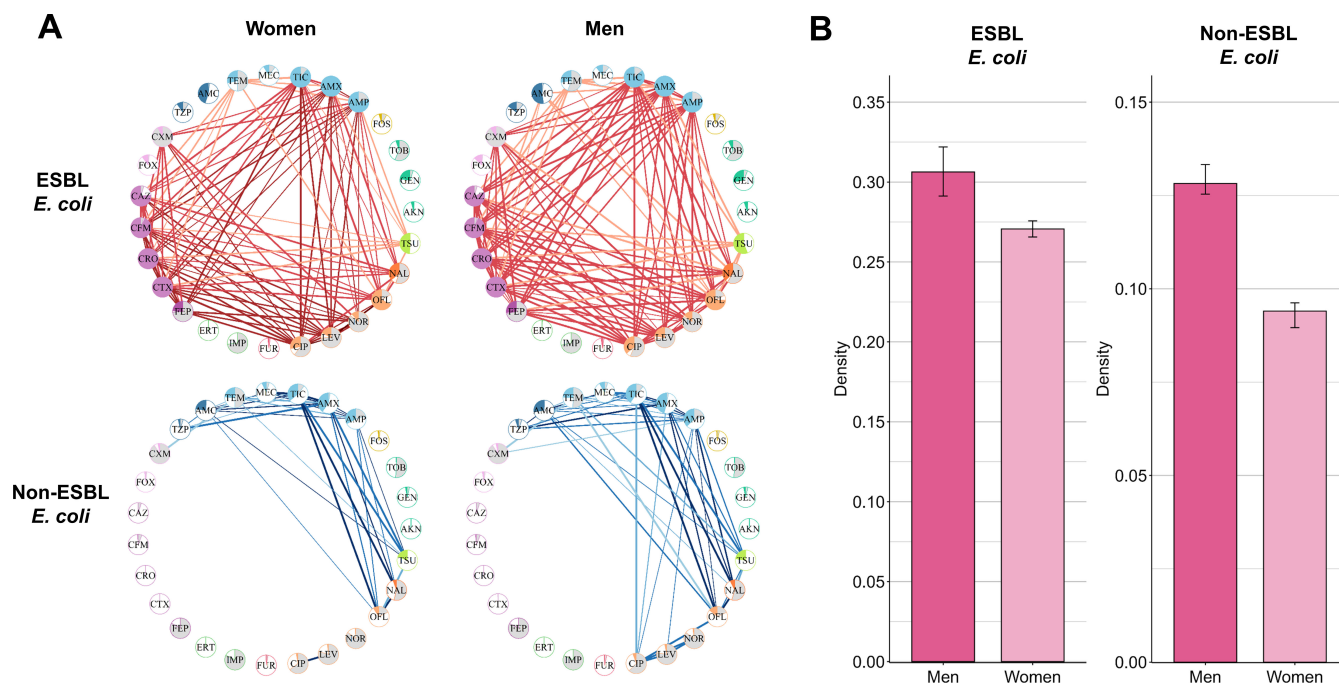


FIG 6 (A) Networks of resistance associations for men and women in 2022. (B) Bar plots of the median network density for men and women. Error bars indicate confidence intervals: for women, calculated using 10 data sets generated at the size of the men's data set; for men, calculated using 10 bootstrapped data sets from the complete men's data set. See Table S2 for a complete list of antibiotics with their full names.

favoring the co-occurrence of multiple resistance traits in *E. coli*. For ESBL-EC, we found no significant difference between the observed and simulated distributions. This indicates that the average number of antibiotics to which an isolate is resistant does not differ from what would be expected under the hypothesis of mutual independence of resistance traits. However, this does not imply that resistance traits are independent in ESBL-EC.

Resistance rates were generally low for first-line antibiotics recommended in France for community-acquired UTIs, such as fosfomycin, pivmecillinam, or nitrofurantoin (15). Analysis of ESBL-EC resistance association networks highlighted major associations between penicillins (\pm inhibitors), cephalosporins, fluoroquinolones, and cotrimoxazole. This pattern may correspond to CTX-M, the most prevalent ESBL in *E. coli*, as well as TEM or SHV enzymes, which all hydrolyze penicillins and cephalosporins. CTX-M is mostly susceptible to piperacillin-tazobactam (\sim 80%–90%), while this is more variable in TEM/SHV. They are both highly resistant to fluoroquinolones (80%–90%) and moderately resistant (\sim 50%) to cotrimoxazole. Although the mechanisms of resistance to beta-lactams and fluoroquinolones are distinct, fluoroquinolone resistance genes (e.g., *qnr* or *aac[6']-Ib-cr*) are present on mobile genetic elements that also carry beta-lactam resistance genes, which allows multiple resistances to be transmitted jointly (16). Association-set mining may represent an efficient approach to better understand the dynamics of *E. coli* multiresistance patterns and make hypotheses regarding the underlying genetic evolutions, to be confirmed by whole-genome sequencing analysis.

Using association-set mining, we found that the number of resistance associations increased from 2018 to 2022 in both ESBL-EC and non-ESBL-EC. Despite this overall increasing trend, a temporary decrease was observed in 2020, consistent with the observed reduction in MDR *E. coli* during the COVID-19 pandemic in France (17). We explored the impact of spatial resistance epidemiology on our findings through a sensitivity analysis using data sets where the number of isolates from each region was proportional to its population. This approach confirmed the nationwide increase of resistance associations within community-acquired ESBL-EC UTIs. However, in this

sensitivity analysis, the increase in non-ESBL-EC disappeared. Consequently, the changes in regional relative contributions may have played a role in the temporal increase of the number of resistance associations we observed in non-ESBL-EC isolates. In particular, the contribution of several densely populated and internationally connected French regions, including Ile-de-France (Paris area), increased over time. Isolates from these regions may present more resistance associations. In addition, we showed this increasing trend over a 5-year period, but these findings should be confirmed over a longer time frame.

During 2018–2022, the global antibiotics consumption in primary care decreased in France from 22.9 to 21.6 defined daily doses per 10,000 inhabitants per day. This decreasing trend in consumption was observed for large-spectrum penicillins, cephalosporins, and quinolones, but not for associations of penicillins, sulfonamides, and trimethoprim, which remained stable. In this context, the increasingly dense MDR patterns we observe among community *E. coli* may be driven not only by antibiotic use but also by other multiple human, animal, and environmental factors (18).

Isolates coming from men and individuals older than 65 had more resistance associations, even after adjusting for different sample sizes. This finding is consistent with multiple studies showing that older individuals are particularly exposed to MDR bacteria, notably because of immunosenescence, frequent multiple chronic comorbidities, and the associated requirement for care. They are more frequently exposed to hospitals and other healthcare facilities, increasing their contact with resistant bacteria (19, 20). In contrast, limited data are available regarding gender-specific differences in MDR, although some studies suggested that men have a higher risk than women of being infected with resistant bacteria (21–23). In our study, men-specific networks had additional associations involving cefuroxime. In hospital settings, cefuroxime is routinely used as surgical prophylaxis to reduce the risk of postoperative infections, particularly in prostate resection, a common procedure in older men (24). Moreover, UTIs in men are more commonly associated with structural abnormalities like renal stones and malignancies, which can complicate the treatment, lead to increased antibiotic use, and contribute to the development of resistance (25). This could partially explain the additional associations. To explore a potential gender-by-age interaction, we performed separate analyses for men over 65, men under 65, women over 65, and women under 65 (Fig. S9). For ESBL-EC, network density was significantly lower in women under 65 compared to the other groups. This may be explained by the high prevalence of uncomplicated cystitis in this population, which typically involves fewer resistance traits. For non-ESBL-EC, men over 65 exhibited significantly higher network density than the other groups. This group's higher level of healthcare exposure likely increases their risk of acquiring further resistance traits.

Our study is subject to certain limitations that should be taken into account.

First, the size of the PRIMO data sets generally increased every year, notably due to the increase in the scope of the PRIMO mission. However, the 2020 data set was slightly smaller than the 2019 one (450,135 vs 450,820 isolates). This could be partially explained by the COVID-19 pandemic, which disrupted healthcare systems and microbiological surveillance practices in 2020. Community clinical laboratories prioritized COVID-19 management, potentially reducing their capacity to collect and record AST (26). While network size is known to impact its density (27), in our analyses, we accounted for varying sizes of compared data sets by randomly drawing subsamples at the size of the smallest data set.

Second, the PRIMO surveillance system included isolates collected in community clinical laboratories. Although these laboratories process exclusively outpatient samples, excluding samples from hospital inpatients and nursing home residents, a small number of isolates may come from individuals who were recently hospitalized and could have acquired the pathogen in that setting. Therefore, we cannot be entirely certain that the data were representative of the total community-acquired *E. coli* UTI in France between 2018 and 2022.

Third, in the absence of definitive UTI clinical diagnoses, we assumed that urine samples were taken in the context of a strong UTI suspicion. A small number of isolates may have come from asymptomatic bacteriuria; however, as all isolates came from community laboratories, it is very likely that these urine samples were collected for diagnostic purposes from patients with clinical symptoms suggestive of a UTI.

Fourth, in the PRIMO database, some antibiotics were tested on a very small number of isolates. To minimize bias, we included only antibiotics tested on at least 10% of isolates across all data sets and excluded antibiotics rarely used in routine. We found stable results for most antibiotics over time. However, this limitation may explain the changing results regarding ampicillin from 2018 to 2019. In 2018, ampicillin was tested on only 2% of isolates, which likely prevented the algorithm from identifying significant associations involving this antibiotic. By 2019, ampicillin was tested on more isolates, allowing the algorithm to detect such associations. We did a sensitivity analysis using a stricter criterion to select antibiotics, which gave results consistent with those of the main analysis. Moreover, the antibiotics tested were determined by the laboratories and might not align with hospital practices, while consistent with practices in outpatient care. Another potential bias is that rarely tested antibiotics in our data might have been tested only on highly resistant isolates. However, a large majority of participating clinical laboratories (90.5%) performed first-line AST in liquid medium, and the frequency of antibiotics tested in our study was consistent with the frequency at which these antibiotics were found in used AST panels, strongly suggesting the absence of bias.

Fifth, we adopted a microbiological perspective and grouped isolates categorized as “Susceptible to increased exposure” with those categorized as “Resistant,” as they show at least partial resistance mechanisms. The “Susceptible to increased exposure” classification can result from various mechanisms, such as hyperproduction of chromosomally encoded beta-lactamase and outer membrane proteins, which confer partial resistance to cefuroxime (28). A clinically oriented analysis might have led to different conclusions.

Sixth, our results are valid for *E. coli* isolates only, and not for other Enterobacterales, potentially limiting their generalizability. We chose to focus the study on *E. coli* as it represented 85.0% of all isolates in the data set.

Seventh, the *Apriori* algorithm is a highly efficient method supported by multiple studies (9–11). However, combining multiple data mining approaches, as recently suggested (11), could have enhanced our understanding of MDR. In addition, *Apriori* generates numerous patterns, requiring careful pruning with appropriate quality measures and cut-off values. While many studies rely solely on support (29), it would have favored frequent resistance patterns, such as those involving amoxicillin, while overlooking rarer but significant associations. We therefore chose lift as a robust complementary metric (9); however, numerous other metrics or metric combinations could be proposed (30, 31), potentially yielding slightly different results. Missing data may also have influenced *Apriori* results by altering resistance prevalence distributions and associations (32), although this was addressed by the use of adapted quality measures (eSup and cLift) (33). Moreover, as *Apriori* returns numerous patterns, we applied initial support thresholds of 0.001 for non-ESBL-EC and 0.01 for ESBL-EC, the latter being stricter due to computational limitations. This may have underestimated network density for ESBL-EC. To evaluate this, we repeated the analyses from 2018 to 2022 with an initial support threshold of 0.001 for ESBL-EC. The resulting networks were much denser, leading to a loss of statistical significance of the density increase over time ($P = 0.14$, Pearson test), possibly reflecting a saturation of network connections (Fig. S10). Finally, cut-off values also influence pattern selection (29). Our percentile-based approach led us to exclude patterns with a lift below 1, which could have highlighted MDR patterns occurring less frequently than expected.

Despite these limitations, our study provided a novel and detailed analysis of multiresistance patterns in community-acquired *E. coli* UTI collected from a French national surveillance system. We explored the temporal evolution of resistance

associations, gender-specific and age-specific differences, which to our knowledge, had not been previously analyzed. Our findings confirm that this method is effective for identifying resistance associations in antibiotic resistance surveillance data. With further research, this work could provide insights for antibiotic stewardship strategies in alignment with known resistance associations in community-acquired *E. coli* UTIs. In the context of rising antibiotic resistance, optimizing the use of current medications is crucial, as few new antibiotics have been developed in the past two decades (34).

Future research could use other machine learning approaches to further analyze the PRIMO data sets and get a deeper understanding of resistance associations. Moreover, it would be interesting to examine the evolution of resistance associations in future years. In addition, extending our approach to other pathogens beyond *E. coli* could offer a broader perspective on multiresistance dynamics. Finally, future work could investigate the potential linkage between these phenotypic resistance associations and genetic co-resistance mechanisms, depending on the availability of genotypic data.

MATERIALS AND METHODS

Data source

This study used retrospective data collected via PRIMO, a French nationwide surveillance system of clinical laboratories participating on a voluntary basis (742 laboratories in 2018, 1773 laboratories in 2022) (12). Data included AST results, patient's age, gender, and administrative region. We restricted the analyses to AST collected from *E. coli* urine samples in community laboratories between 1 January 2018 and 31 December 2022, excluding nursing homes. While no definitive clinical diagnosis was available, we assumed that urine samples were taken in the context of a strong UTI suspicion.

AST and ESBL testing were carried out and assessed according to the recommendations of the AST committee of the French Microbiology Society (35). The presence of ESBL was confirmed by either the double-disk synergy test (44% of clinical laboratories) or the combination disk test (39%). The remaining laboratories used alternative methods, such as colorimetry, immunochromatography, or a combination of two methods (36). Each isolate was tested against 3–35 antibiotics and categorized in a Susceptible, Susceptible to increased exposure, or Resistant format according to the European Committee on Antimicrobial Susceptibility Testing recommended breakpoints, updated every year (Table S1). For this analysis, Susceptible to increased exposure and Resistant were grouped as Resistant. We excluded antibiotics that were tested on less than 10% of isolates on average across all years and antibiotics rarely used in routine. This process resulted in the inclusion of 27 antibiotics (Table S2). As the EUCAST breakpoint defining "Susceptible" isolates did not change over the study period for any of these antibiotics, our findings were not affected by breakpoint changes. Carbapenemase-producing isolates were excluded from the analysis as their low frequency of testing did not allow for a robust analysis of their specific multiresistance patterns. To avoid duplicates, when multiple isolates with the same susceptibility pattern were collected from the same individual (same date of birth and sex) within a single clinical laboratory, only the first isolate in the data set was included.

Data stratification

We classified isolates into two phenotype categories: ESBL-EC, either alone or combined with another phenotype, and non-ESBL-EC. Table S3 presents the frequency of each phenotype combined with ESBL production. Isolates with other combined phenotypes represented less than 0.01% of all ESBL-EC across all years. We conducted analyses separately for each year and phenotype data set. To explore potential gender- and age-based differences in multiresistance patterns, we also conducted stratified analyses by sex and separate analyses for individuals aged under and over 65.

Testing the independence of individual resistances

We first assessed the independence of individual resistances (10). We simulated 100 data sets under the hypothesis that all antibiotic resistance traits are mutually independent, which matched the observed data sets in size, resistance prevalence, and positions of missing AST results. Resistance traits were generated as independent binomial random variables (n = number of isolates tested; P = resistance prevalence). To evaluate the likelihood of the observed MDR prevalence under the hypothesis of mutual independence of all antibiotic resistance traits, we compared the distribution of resistance counts per isolate between observed and simulated data using a Kolmogorov-Smirnov test.

Multiresistance patterns identification

To identify MDR patterns from our data sets, we used association-set mining with the *Apriori* algorithm, as previously proposed by Cazer et al. (10, 13). Briefly, we first explored the data sets to select all patterns present with a given frequency, setting the required initial minimum frequency at 0.01 for ESBL-EC and 0.001 for non-ESBL-EC. In a second step, we selected patterns for which two important metrics, eSup and cLift, were significantly higher than expected by chance. To do this, we determined the 95th percentiles of eSup and cLift under the resistance independence hypothesis using the previously described 100 data sets simulated under the hypothesis of mutual independence of all antibiotic resistance traits, and pruned all patterns with eSup and cLift below these cut-off values. eSup measures the pattern frequency within the data set, while cLift assesses the frequency of a pattern relative to its expected frequency under the assumption that resistance to antibiotics within the pattern is independent. More details on multiresistance pattern identification and accounting for missing data are provided in Text S1.

We performed a trend test to determine if there was an increasing or decreasing trend in the cLift and eSup cut-off values over the years, as well as in the number of patterns initially identified by *Apriori* and those selected after the pruning step. The decision to use either the Pearson test or the Mann-Kendall test was made by fitting a linear model to the data and evaluating the residuals for normality and homoscedasticity using the Shapiro-Wilk and Breusch-Pagan tests, respectively. When at least one of these assumptions was violated, we opted for the Mann-Kendall test instead of the Pearson test.

Construction and analysis of resistance association networks

We decomposed the MDR patterns remaining after pruning into pairwise associations. For example, a pattern {A,B,C} was decomposed into three pairwise associations: {A,B}, {B,C}, and {A,C}. We built resistance association networks from these associations, where nodes represent antibiotics, and edges represent resistance associations between two antibiotics, following the method and adapting the publicly available code provided by Cazer et al. (10) (available at <https://doi.org/10.5281/zenodo.3887072>).

For each reconstructed network, we computed network density. Confidence intervals were estimated using: (i) for 2018, 10 data sets generated by a bootstrap procedure of the original data set, (ii) for 2019 to 2022, 10 random subsamples of the original data sets, each created to match the size of the 2018 data set. We calculated the 95% confidence intervals from the 2.5th and the 97.5th percentiles of the results. Time changes in network density were assessed using these constant-size yearly samples and a Pearson trend test.

Networks were also compared between men and women and individuals under or over 65 years old. Similar to between-year comparisons, we generated 10 random subsamples of the women's (respectively over-65) data set to match the size of the men's (respectively under-65) data set and computed 95% confidence intervals from either bootstrapped data or these subsamples.

We compared MDR patterns following the approach of Cazer et al., 2019 (9), using ROR and CRS. ROR (14) is calculated between two datasets and measures the proportion of shared patterns relative to the total number of patterns in both data sets. CRS (14) averages the ROR over time for consecutive rule sets.

Sensitivity analyses

The regional contributions to the national data set varied over the years. To investigate the impact of these variations on our results, we created a data set where the number of isolates from each region was proportional to its population (details in Text S2) and replicated our analyses using this data set.

In addition, antibiotics were selected based on an arbitrary criterion requiring that each be tested on at least 10% of isolates on average across all data sets. To ensure the reliability of the results, we performed the analyses using a more stringent criterion for antibiotic selection, requiring that the antibiotics be tested on at least 10% of isolates in each year. All analyses were performed in R 4.3.2, notably using the package “arules” for association-set mining (37).

ACKNOWLEDGMENTS

This work received funding from the French government through the National Research Agency project COMBINE ANR –22-PAMR-0003. The sponsors had no role in the design and conduct of the study; collection, management, analysis, and interpretation of the data; preparation, review, or approval of the manuscript; and decision to submit the manuscript for publication.

G.B. had full access to all of the data in the study and takes responsibility for the integrity of the data and the accuracy of the data analysis. Concept and design: E.H., O.L., L.T., and G.B. Acquisition, analysis, or interpretation of data: E.H., S.T., T.C., O.L., L.T., D.B., S.C., and G.B. Drafting of the manuscript: E.H., G.B., and L.T. Critical revision of the manuscript for important intellectual content: E.H., O.L., S.C., D.B., G.B., and L.T. Statistical analysis: E.H., T.C., and L.T. Obtained funding: G.B. and L.T. Administrative, technical, or material support: G.B. and L.T. Supervision: L.T., O.L., and G.B.

Anne Berger-Carbone, MD, Laetita Gambotti, and Sylvie Maugat, MSc (from Santé Publique France), supported the data. These individuals were not compensated for their contributions.

Members of the French Clinical Laboratories Nationwide Network include the following: A. Vrain, LABOUEST, Ancenis; P. Andorin, BIOLARIS, Laval; J. Besson, BIOLIANCE, Nantes; F. Maillet, BIOLOIRE, Nantes; G. de Gastines, BIORYLIS, La Roche sur Yon; P.-Y. Léonard, LABORIZON MAINE ANJOU, Le Mans; M. Guery, SEVRE BIOLOGIE, Les Herbiers; V. Plong, ACTIV'BIOLAB, Challans; N. Le Moing, RESEAUBIO, La Chapelle sur Erdre; F. Kerdauid, ALLIANCE ANABIO, Melesse; A.-S. Reinhard, BIOCELIANDE, Montauban de Bretagne; S. Gillard, BIOLOR, Lorient; B. Guesnon, BIORANCE, Saint Malo; B. Gestin, LABAZUR, Chateaulin; H. Banctel, SBL BIO, Saint Brieu; D. Laforest, BIOCENTRE, Coutances; E. Pradier, CARMES, Caen; S. Arsene, CERBALLIANCE NORMANDIE, Lisieux; A. Holstein, ABO +, Tours; D. Bouvet, BIO MEDI QUAL Centre, Vierzon; B. Dubet, LBM DUBET, Neuville aux bois; C. Laudignon, MLAB, Saran; E. Jobert, MIRIALIS, Annecy; R. Gebeile, DYNABIO, Lyon; S. Poyet, DYOMEDEA, Lyon; G. Deleglise, GENBIO, Clermont Ferrand; N. Lecordier, ANALYSIS 88, Epinal; S. Fougnot, ATOUTBIO, Nancy; E. Grandsire, DYNALAB, Romilly sur Seine; J.-P. Rault, ESPACEBIO, Metz; G. Defrance, BIOFUTUR, L'isle Adam; J. Cadenet, BIOVSM, Torcy; L. Libier, AX BIO OCEAN, Bayonne; A. Touzalin, BIO17, La Rochelle; A. Allery, BIO86, Poitiers; H. Valade, BIOFFICE, Bordeaux; G. Payro, CERBALLIANCE-CHARENTE, Saintes; D. Boraud, EXALAB Groupe LABEXA, Le Haillan; E. Parisi, VIALLE, Bastia; F. Alluin, 2A2B, Porto Vecchio; J. Bayette, LABOSUD, Montpellier; M.-F. Aran, BIOPOLE66, Perpignan; P. Stevenin, BIOAXIOME, Avignon; A. François, BIOESTEREL, Mandelieu-la-Napoule; G. Gay, LABOSUD PROVENCE, Marseille; O. Duquesnoy, BIOPATH, Dunkerque; V. Sainte Rose, BIOLAB MARTINIQUE, Fort de France; F. Dos Santos, BIOSANTE,

Schoelcher. F. Artur, BIOCEANE, Le Havre. E. Mbenga, BIOLAB, Beaune; A. Desjardins, EVORIAL, Nevers; M.-C. Paolini, BDCBM5, Besançon; P. Marchenay, LPA18, Vesoul.

The views expressed are those of the authors and not necessarily those of Santé Publique France or the ANR.

AUTHOR AFFILIATIONS

¹Cibles et médicaments des infections et de l'immunité, IICiMed, Nantes Université, Nantes, France

²Laboratoire Modélisation, Epidémiologie et Surveillance des Risques Sanitaires (MESuRS), Conservatoire National des Arts et Métiers, Paris, France

³Centre d'Appui à la Prévention des Infections Associées aux Soins des Pays de la Loire, Centre Hospitalier Universitaire (CHU) - Le Tourville, Nantes, France

⁴French National Surveillance System of Antimicrobial Resistance in Primary Care and Nursing Homes, PRIMO, CHU - Le Tourville, Nantes, Pays de la Loire, France

⁵Department of Infectious Diseases, University Hospital of Nantes and Center d'Investigation Clinique 1413, Institut National de la Santé et de la Recherche Médicale, Nantes, CHU Nantes, Nantes, France

⁶Service de Bactériologie, CHU Nantes, Nantes, France

⁷INSERM, Immunology and New Concepts in ImmunoTherapy, INCIT, UMR 1302, Nantes Université, Nantes, France

⁸National Institute for Health Research Health Protection Research Unit in Healthcare Associated Infections and Antimicrobial Resistance, Imperial College London, London, United Kingdom

⁹Unité PACRI, Institut Pasteur, Conservatoire National des Arts et Métiers, Paris, France

AUTHOR ORCIDs

Elise Hodbert  <http://orcid.org/0009-0006-3498-5698>

Stephane Corvec  <http://orcid.org/0000-0003-3176-8111>

Laura Temime  <http://orcid.org/0000-0002-8850-5403>

FUNDING

Funder	Grant(s)	Author(s)
Agence Nationale de la Recherche	ANR-22-PAMR-0003	Gabriel Birgand

AUTHOR CONTRIBUTIONS

Elise Hodbert, Conceptualization, Data curation, Formal analysis, Investigation, Methodology, Software, Validation, Visualization, Writing – original draft, Writing – review and editing | Olivier Lemenand, Conceptualization, Data curation, Formal analysis, Methodology, Supervision, Writing – review and editing | Sonia Thibaut, Data curation, Investigation | Thomas Coeffic, Data curation, Formal analysis, Investigation | David Boutoille, Data curation, Investigation, Writing – review and editing | Stephane Corvec, Data curation, Investigation, Writing – review and editing | Gabriel Birgand, Conceptualization, Funding acquisition, Project administration, Supervision, Writing – original draft, Writing – review and editing | Laura Temime, Conceptualization, Data curation, Formal analysis, Funding acquisition, Investigation, Methodology, Project administration, Supervision, Validation, Writing – original draft, Writing – review and editing

DATA AVAILABILITY

All codes used in the analysis are available in the following GitHub repository: https://github.com/elisehodbert/exploring_MDR_patterns.

ETHICS APPROVAL

Because the analysis was performed using anonymized surveillance data, ethical consent was not required according to the French Data Protection Act. The data set was accredited by the French National Data Protection Commission (CNIL 1,685,003), and the fully anonymized data waiver for informed consent of study participants was applied.

ADDITIONAL FILES

The following material is available [online](#).

Supplemental Material

Supplemental material (AAC00422-25-S0001.docx). Tables S1 to S3; Fig. S1 to S10.

REFERENCES

- Cosgrove SE. 2006. The relationship between antimicrobial resistance and patient outcomes: mortality, length of hospital stay, and health care costs. *Clin Infect Dis* 42 Suppl 2:S82–S89. <https://doi.org/10.1086/499406>
- Holmes AH, Moore LSP, Sundsfjord A, Steinbakk M, Regmi S, Karkey A, Guerin PJ, Piddock LJV. 2016. Understanding the mechanisms and drivers of antimicrobial resistance. *The Lancet* 387:176–187. [https://doi.org/10.1016/S0140-6736\(15\)00473-0](https://doi.org/10.1016/S0140-6736(15)00473-0)
- Naghavi M, Vollset SE, Ikuta KS, Swetschinski LR, Gray AP, Wool EE, Robles Aguilar G, Mestrovic T, Smith G, Han C, et al. 2024. Global burden of bacterial antimicrobial resistance 1990–2021: a systematic analysis with forecasts to 2050. *The Lancet* 404:1199–1226. [https://doi.org/10.1016/S0140-6736\(24\)01867-1](https://doi.org/10.1016/S0140-6736(24)01867-1)
- Murray CJL, Ikuta KS, Sharara F, Swetschinski L, Robles Aguilar G, Gray A, Han C, Bisignano C, Rao P, Wool E, et al. 2022. Global burden of bacterial antimicrobial resistance in 2019: a systematic analysis. *The Lancet* 399:629–655. [https://doi.org/10.1016/S0140-6736\(21\)02724-0](https://doi.org/10.1016/S0140-6736(21)02724-0)
- Nicolle LE. 2002. Epidemiology of urinary tract infections. *Clin Microbiol Newsl* 24:135–140. [https://doi.org/10.1016/S0196-4399\(02\)80035-6](https://doi.org/10.1016/S0196-4399(02)80035-6)
- Surveillance de la résistance bactérienne aux antibiotiques en soins de ville et en établissements d'hébergement pour personnes âgées dépendantes. 2021. Mission Primo: Résultats
- Chang H-H, Cohen T, Grad YH, Hanage WP, O'Brien TF, Lipsitch M. 2015. Origin and proliferation of multiple-drug resistance in bacterial pathogens. *Microbiol Mol Biol Rev* 79:101–116. <https://doi.org/10.1128/MMBR.00039-14>
- Tzouveleki LS, Markogiannakis A, Psychogiou M, Tassios PT, Daikos GL. 2012. Carbapenemases in *Klebsiella pneumoniae* and other Enterobacteriaceae: an evolving crisis of global dimensions. *Clin Microbiol Rev* 25:682–707. <https://doi.org/10.1128/CMR.05035-11>
- Cazer CL, Al-Mamun MA, Kaniyamattam K, Love WJ, Booth JG, Lanzas C, Gröhn YT. 2019. Shared multidrug resistance patterns in chicken-associated *Escherichia coli* identified by association rule mining. *Front Microbiol* 10:687. <https://doi.org/10.3389/fmicb.2019.00687>
- Cazer CL, Westblade LF, Simon MS, Magleby R, Castanheira M, Booth JG, Jenkins SG, Gröhn YT. 2021. Analysis of multidrug resistance in *Staphylococcus aureus* with a machine learning-generated antibiogram. *Antimicrob Agents Chemother* 65:e02132-20. <https://doi.org/10.1128/AAC.02132-20>
- Mosaddegh A, Angel CC, Craig M, Cummings KJ, Cazer CL. 2024. An exploration of descriptive machine learning approaches for antimicrobial resistance: multidrug resistance patterns in *Salmonella enterica*. *Prev Vet Med* 230:106261. <https://doi.org/10.1016/j.prevetmed.2024.106261>
- Lemenand O, Thibaut-Jovelin S, Coeffic T, Caillon JP. 2024. PRIMO: Résultats 2022 - Surveillance de la résistance bactérienne aux antibiotiques en soins de ville et en Ehpad. Repias: Réseau de Prévention des Infections Associées aux Soins. Available from: <https://www.preventioninfection.fr/actualites/primo-resultats-2022-surveillance-de-la-resistance-bacterienne-aux-antibiotiques-en-soins-de-ville-et-en-ehpad/>
- Dongre J, Prajapati GL, Tokekar SV. 2014. The role of Apriori algorithm for finding the association rules in Data mining, p 657–660. In 2014 International Conference on Issues and Challenges in Intelligent Computing Techniques (ICICT). IEEE, Ghaziabad, India. <https://doi.org/10.1109/ICICT.2014.6781357>
- Dudek D. 2010. Measures for comparing association rule sets, p 315–322. In Rutkowski L, Scherer R, Tadeusiewicz R, Zadeh LA, Zurada JM (ed), *Artificial intelligence and soft computing*. Springer, Berlin, Heidelberg. https://doi.org/10.1007/978-3-642-13208-7_40
- Caron F, Galperine T, Flateau C, Azria R, Bonacorsi S, Bruyère F, Cariou G, Clouqueur E, Cohen R, Doco-Lecompte T, Elefant E, Faure K, Gauzit R, Gavazzi G, Lemaître L, Raymond J, Senneville E, Sotto A, Subtil D, Trivalle C, Merens A, Etienne M. 2018. Practice guidelines for the management of adult community-acquired urinary tract infections. *Med Mal Infect* 48:327–358. <https://doi.org/10.1016/j.medmal.2018.03.005>
- Strahilevitz J, Jacoby GA, Hooper DC, Robicsek A. 2009. Plasmid-mediated quinolone resistance: a multifaceted threat. *Clin Microbiol Rev* 22:664–689. <https://doi.org/10.1128/CMR.00016-09>
- Lemenand O, Coeffic T, Thibaut S, Colomb Cotinat M, Caillon J, Birgand G, Clinical Laboratories of PRIMO Network. Nantes, France. 2021. Decreasing proportion of extended-spectrum beta-lactamase among *E. coli* infections during the COVID-19 pandemic in France. *J Infect* 83:664–670. <https://doi.org/10.1016/j.jinf.2021.09.016>
- Paumier A, Asquier-Khate A, Thibaut S, Coeffic T, Lemenand O, Larramendy S, Leclère B, Caillon J, Boutoille D, Birgand G, French Clinical Laboratories Nationwide Network. 2022. Assessment of factors associated with community-acquired extended-spectrum β -lactamase-producing *Escherichia coli* urinary tract infections in France. *JAMA Netw Open* 5:e2232679. <https://doi.org/10.1001/jamanetworkopen.2022.32679>
- Gajdác M, Ábrók M, Lázár A, Burián K. 2021. Urinary tract infections in elderly patients: a 10-year study on their epidemiology and antibiotic resistance based on the WHO access, watch, reserve (AWaRe) classification. *Antibiotics (Basel)* 10:1098. <https://doi.org/10.3390/antibiotics10091098>
- Theodorakis N, Feretzakis G, Hitas C, Kreouzi M, Kalantzi S, Spyridaki A, Boufeas IZ, Sakagianni A, Paxinou E, Vergykios VS, Nikolaou M. 1978. Antibiotic resistance in the elderly: mechanisms, risk factors, and solutions. *Microorganisms* 12:1978. <https://doi.org/10.3390/microorganisms12101978>
- Brandl M, Hoffmann A, Willrich N, Reuss A, Reichert F, Walter J, Eckmanns T, Haller S. 2021. Bugs that can resist antibiotics but not men: gender-specific differences in notified infections and colonisations in Germany, 2010–2019. *Microorganisms* 9:894. <https://doi.org/10.3390/microorganisms9050894>
- Khanal N, Cortie CH, Story C, Jones S, Mansfield KJ, Miyakis S, Keighley C. 2024. Multidrug resistance in urinary *E. coli* higher in males compared to females. *BMC Urol* 24:255. <https://doi.org/10.1186/s12894-024-01654-x>
- Costa T, Linhares I, Ferreira R, Neves J, Almeida A. 2018. Frequency and antibiotic resistance of bacteria implicated in community urinary tract infections in North Aveiro between 2011 and 2014. *Microb Drug Resist* 24:493–504. <https://doi.org/10.1089/mdr.2016.0318>
- Ferrie BG, Scott R. 1984. Prophylactic cefuroxime in transurethral resection. *Urol Res* 12:279–281. <https://doi.org/10.1007/BF00258035>
- Wagenlehner FME, Weidner W, Pilatz A, Naber KG. 2014. Urinary tract infections and bacterial prostatitis in men. *Curr Opin Infect Dis* 27:97–101. <https://doi.org/10.1097/QCO.000000000000024>

26. Durant TJS, Peaper DR, Ferguson D, Schulz WL. 2020. Impact of COVID-19 pandemic on laboratory utilization. *J Appl Lab Med* 5:1194–1205. <https://doi.org/10.1093/jalm/jfaa121>
27. Snijders T, Borgatti S. 1999. Non-parametric standard errors and tests for network statistics. *Connect (Tor)* 22
28. Källman O, Giske CG, Samuelsen Ø, Wretling B, Kalin M, Olsson-Liljequist B. 2009. Interplay of efflux, impermeability, and AmpC activity contributes to cefuroxime resistance in clinical, non-ESBL-producing isolates of *Escherichia coli*. *Microb Drug Resist* 15:91–95. <https://doi.org/10.1089/mdr.2009.0883>
29. Martínez-Ballesteros M, Martínez-Álvarez F, Troncoso A, Riquelme JC. 2014. Selecting the best measures to discover quantitative association rules. *Neurocomputing* 126:3–14. <https://doi.org/10.1016/j.neucom.2013.01.056>
30. Datta S, Mali K. 2021. Significant association rule mining with high associability, p 1159–1164. In 2021 5th International Conference on Intelligent Computing and Control Systems (ICICCS). <https://doi.org/10.1109/ICICCS51141.2021.9432237>
31. Tan P-N, Kumar V, Srivastava J. 2002. Selecting the right interestingness measure for association patterns, p 32–41. In Proceedings of the eighth ACM SIGKDD international conference on Knowledge discovery and data mining. Association for Computing Machinery, New York, NY, USA. <https://doi.org/10.1145/775047.77505>
32. Brown ML, Kros JF. 2003. Data mining and the impact of missing data. *Ind Manag Data Syst* 103:611–621. <https://doi.org/10.1108/02635570310497657>
33. Calders T, Goethals B, Mampaey M. 2007. Mining itemsets in the presence of missing values, p 404–408. In SAC '07: Proceedings of the 2007 ACM symposium on Applied computing
34. Renwick MJ, Brogan DM, Mossialos E. 2016. A systematic review and critical assessment of incentive strategies for discovery and development of novel antibiotics. *J Antibiot (Tokyo)* 69:73–88. <https://doi.org/10.1038/ja.2015.98>
35. Cattoir V. 2022. Comité de l'Antibiogramme de la Société Française de Microbiologie. Société Française de Microbiologie. Available from: https://www.sfm-microbiologie.org/boutique/_comite-de-lantibiogramme-de-la-sfm-ca-sfm-v1-0-juin-2024/
36. Thibaut S, Lemenand O, Coeffic T, Birgand G. 2024. Description des méthodes de caractérisation de la résistance aux antibiotiques utilisées en 2023 par les laboratoires de biologie médicale privés
37. Hahsler M, Grün B, Hornik K. 2005. Arules - A Computational Environment for Mining Association Rules and Frequent Item Sets. *J Stat Softw* 14:1–25. <https://doi.org/10.18637/jss.v014.i15>