



**HAL**  
open science

## Early elevated IFN $\alpha$ is a key mediator of HIV pathogenesis

Helene Le Buanec, Valérie Schiavon, Marine Merandet, Alexandre How-Kit, David Bergerat, Céline Fombellida-Lopez, Armand Bensussan, Jean-David Bouaziz, Arsène Burny, Gilles Darcis, et al.

► **To cite this version:**

Helene Le Buanec, Valérie Schiavon, Marine Merandet, Alexandre How-Kit, David Bergerat, et al.. Early elevated IFN $\alpha$  is a key mediator of HIV pathogenesis. *Communications Medicine*, 2024, 4 (1), pp.53. 10.1038/s43856-024-00454-6 . inserm-04787227

**HAL Id: inserm-04787227**

**<https://inserm.hal.science/inserm-04787227v1>**

Submitted on 17 Nov 2024

**HAL** is a multi-disciplinary open access archive for the deposit and dissemination of scientific research documents, whether they are published or not. The documents may come from teaching and research institutions in France or abroad, or from public or private research centers.

L'archive ouverte pluridisciplinaire **HAL**, est destinée au dépôt et à la diffusion de documents scientifiques de niveau recherche, publiés ou non, émanant des établissements d'enseignement et de recherche français ou étrangers, des laboratoires publics ou privés.



Distributed under a Creative Commons Attribution 4.0 International License

<https://doi.org/10.1038/s43856-024-00454-6>

# Early elevated IFN $\alpha$ is a key mediator of HIV pathogenesis

Check for updates

Hélène Le Buanec<sup>1</sup>, Valérie Schiavon<sup>1</sup>, Marine Merandet<sup>1</sup>, Alexandre How-Kit<sup>2</sup>, David Bergerat<sup>1</sup>, Céline Fombellida-Lopez<sup>3</sup>, Armand Bensussan<sup>1</sup>, Jean-David Bouaziz<sup>1,4</sup>, Arsène Burny<sup>5,6</sup>, Gilles Darcis<sup>3</sup>, Hongshuo Song<sup>7</sup>, Mohammad M. Sajadi<sup>6,7,8</sup>, Shyamasundaran Kottilil<sup>6,7,8</sup>, Robert C. Gallo<sup>6,7,10</sup> ✉ & Daniel Zagury<sup>9,10</sup>

## Abstract

**Background** A complete understanding of the different steps of HIV replication and an effective drug combination have led to modern antiretroviral regimens that block HIV replication for decades, but these therapies are not curative and must be taken for life. “Elite controllers” (ECs) is a term for the 0.5% of HIV-infected persons requiring no antiretroviral therapy, whose status may point the way toward a functional HIV cure. Defining the mechanisms of this control may be key to understanding how to replicate this functional cure in others.

**Methods** In ECs and untreated non-EC patients, we compared IFN $\alpha$  serum concentration, distribution of immune cell subsets, and frequency of cell markers associated with immune dysfunction. We also investigated the effect of an elevated dose of IFN $\alpha$  on distinct subsets within dendritic cells, natural killer cells, and CD4<sup>+</sup> and CD8<sup>+</sup> T cells.

**Results** Serum IFN $\alpha$  was undetectable in ECs, but all immune cell subsets from untreated non-EC patients were structurally and functionally impaired. We also show that the altered phenotype and function of these cell subsets in non-EC patients can be recapitulated when cells are stimulated in vitro with high-dose IFN $\alpha$ .

**Conclusions** Elevated IFN $\alpha$  is a key mediator of HIV pathogenesis.

## Plain language summary

Currently, HIV infection is not curable, but infected individuals can manage their condition by taking daily doses of antiretroviral therapy. Some individuals, known as elite controllers (ECs), control their infection without antiretroviral treatment, and studying how their immune system responds to HIV exposure could lead to a potential cure for others. Here, we compare immune cell responses between ECs and untreated non-ECs. We find that IFN $\alpha$ , a small protein with an important role in controlling white blood cell activity, is produced in excess in immune cells from non-ECs compared with ECs during early infection. This insight provides an important clue for the future development of a targeted cure for HIV.

Potent antiretroviral therapy (ART) was chiefly developed through advances in understanding the stages and molecular events involved in HIV replication. However, these advances have not led to a “functional cure” in which no further therapy is needed to suppress virus resurgence and immune decline. One potential solution is the development of longer-lasting drugs and better delivery. An additional approach is to gain a greater understanding of HIV pathogenesis. A small group of HIV-infected patients have an undetectable viral load without therapy and are known as elite controllers (EC) (<0.5%). This patient group was identified by several clinical investigators and highlighted by ref. <sup>1</sup>, who suggested that perhaps

EC status could be mimicked to reach a “functional cure”<sup>2</sup>. Individuals with a genotype including HLA<sub>B57+</sub> (EC<sub>B57+</sub>), which shares the Bw4 serotype with the KIR3DL1 allele, were found to be more prone to EC status<sup>3</sup>; however, not all ECs are HLA<sub>B57+</sub><sup>4</sup>. Consequently, other mechanisms must contribute to the EC status.

Given our long-term studies on the pathogenic (high levels) effects of IFN $\alpha$  in AIDS<sup>5,6</sup>, we questioned whether control of the pathogenic effects of IFN $\alpha$  could be a major immune mechanism in ECs. Indeed, our initial and other reported studies show that elevated IFN $\alpha$  exerts several pathogenic effects. These effects arise first at the innate phase of an immune response by

<sup>1</sup>Université de Paris; INSERM U976, HIPI Unit, Institut de Recherche Saint-Louis, F-75010 Paris, France. <sup>2</sup>Laboratory for Genomics Foundation Jean Dausset-CEPH, Paris, France. <sup>3</sup>Laboratory of Infectious Diseases, GIGA-I3, GIGA-Institute University of Liege, 4000 Liege, Belgium. <sup>4</sup>Dermatology Department, Hôpital Saint-Louis, Assistance Publique-Hôpitaux de Paris (AP-HP), Paris, France. <sup>5</sup>Laboratory of Molecular Biology, Gembloux Agrobiotech, University of Liège, Liège, Belgium. <sup>6</sup>Global Virus Network, Baltimore, MD 21201, USA. <sup>7</sup>Institute of Human Virology, School of Medicine, University of Maryland, Baltimore, MD 21201, USA. <sup>8</sup>University of Maryland School of Medicine, Baltimore, MD 21201, USA. <sup>9</sup>21C BIO, Paris, France. <sup>10</sup>These authors jointly supervised this work: Gallo RC, Zagury D. ✉e-mail: [rgallo@ihv.umaryland.edu](mailto:rgallo@ihv.umaryland.edu)

inhibiting IL-7–induced T cell proliferation, controlling T cell homeostasis<sup>7</sup>. They then emerge at the initiation phase of the adaptive immune response by inhibiting the proliferation of CD4<sup>+</sup>T helper cells<sup>8</sup>, followed by their effects on T cell differentiation into suppressive IL-10-Tr1 cells<sup>9,10</sup>. Systemic IFN $\alpha$  (type I IFN) and mucosal IFN-lambda (IFN $\lambda$ ) (type III IFN) both exert antiviral activities via IFN-stimulated genes<sup>11</sup>, although with different kinetics of gene induction and distinct cell targets expressing specific receptors. IFNAR1 and IFNAR2 are constitutively expressed on virtually all nucleated cells, such as CD4<sup>+</sup>T cells, whereas at homeostasis, IFN $\lambda$  receptors are constitutively expressed on epithelial cells and only in a selected pool of immune cells<sup>12</sup>. Consequently, in inflammatory HIV lymphoid tissues, elevated IFN $\alpha$  locally hampers CD4<sup>+</sup>T helper and CD4<sup>+</sup> follicular T helper cell function and thus inhibits the initiation phase of the anti-HIV adaptive immune response, leading to the development of HIV-specific neutralizing antibody responses. Even at a high level, IFN $\lambda$  does not hamper CD4<sup>+</sup>T cell–induced initiation of the immune response. Of note, a 2023 report characterized the efficacy of therapeutic administration of IFN $\lambda$  in patients in the early stages of COVID-19<sup>13</sup>.

The conclusion that elevated IFN $\alpha$  is a central mediator of HIV pathogenesis is supported by previous findings and the current results. Genetic studies have identified polymorphisms in IFN type 1 and type 3 pathways as contributing to variable responses to HIV infection<sup>14</sup>. In addition, SIV-infected African green monkeys do not express elevated levels of IFN $\alpha$  and do not develop AIDS<sup>15</sup>. In contrast, SIV-infected rhesus macaques develop AIDS and have high serum IFN $\alpha$ <sup>16</sup>. Results from the EURIS phase 2B placebo-controlled clinical trial, carried out in five hospital centers from 1996–1998 in 240 patients who had not received combined ART, were based on anti-IFN $\alpha$  antibody induction in an active vaccine approach to lower IFN $\alpha$ . All study endpoints were met among vaccine responders, including a lower occurrence of HIV-related events, improved CD4<sup>+</sup>T cell counts, and reduced viral load correlating with the rise of anti-IFN $\alpha$  antibodies<sup>17</sup>. Finally, we show here that IFN $\alpha$  induces a series of immune cell abnormalities in untreated non-EC patients.

We find that untreated patients with HIV (non-ECs) have abnormally high concentrations of serum IFN $\alpha$  and a high frequency of phenotypic alterations in all immune cell types. These alterations are known effects of IFN $\alpha$ . In contrast, ECs show minimal abnormal immune cell alterations. We further identify potential immune mechanisms enabling each EC to control viral replication through individual immune capacity. Finally, we hypothesize that EC control of IFN $\alpha$  is at least partially circumstantial, relying on infection with only a low dose of HIV. Because IFN $\alpha$  levels in the primary phase of the acute infection correlate with virus titer, we propose that the critical chain of events in uncontrolled virus replication in non-ECs is a vicious cycle of HIV  $\rightarrow$  IFN $\alpha$   $\rightarrow$  more HIV  $\rightarrow$  elevated IFN $\alpha$   $\rightarrow$  more HIV, and so on. In an accompanying manuscript, we described the mechanism leading to this ongoing cycle<sup>18</sup>.

## Methods

### Human samples

A total of 73 Healthy donor (HD) samples were obtained through Etablissement Français du Sang (EFS, Paris, France). Fifty-one samples were used for serological analysis and 22 for phenotypic analysis. A total of 48 people living with HIV were recruited and subdivided into two groups: ECs ( $n = 18$ ), from the Natural Viral Suppressors Cohort (Baltimore), and non-ECs ( $n = 30$ ), from the National Institutes of Health (Bethesda  $n = 19$ ) and from the Laboratoire de Référence SIDA (Liège  $n = 11$ ). Patient groups did not significantly differ in terms of age, gender, or disease status. All participants provided informed consent in accordance with protocols approved by the regional ethical research boards and the Declaration of Helsinki (H-29331 (USA) and 2020/418 (Belgium)). Clinical data are given in Supplementary Table 1.

### Sample processing

Peripheral blood and serum were collected into appropriate tubes. Peripheral blood mononuclear cells (PBMCs) were isolated by density gradient

centrifugation on Ficoll-Hypaque (Pharmacia, St Quentin en Yvelines, France). PBMCs were stored frozen in liquid nitrogen.

### Cell culture

CD4<sup>+</sup>T cells were isolated from frozen PBMCs. All CD4<sup>+</sup>T cells were positively selected with a CD4<sup>+</sup>T cell isolation kit (Miltenyi Biotec, Germany), yielding CD4<sup>+</sup>T cell populations at a purity of 96–99%. Purified CD4<sup>+</sup>T cells were stimulated with 4  $\mu$ g/mL plate-bound anti-human CD3 (OKT3) monoclonal antibody (mAb; eBioscience, San Diego, CA, USA) and 4  $\mu$ g/mL soluble anti-human CD28 (CD28.2) mAb (Becton Dickinson, Le Pont De Claix France) in the presence of recombinant human IL-2 (Proleukine, Chiron, Amsterdam, 100 U/mL) and recombinant human interferon alpha-2a (Roferon-A) and IFN $\lambda$ 2 (Biotechne, UK) at the indicated dose<sup>19</sup>. After 5 days of culture, CD38 and CD25 expression and the frequency of 7-AAD<sup>+</sup> cells were measured by flow cytometry on stimulated CD4<sup>+</sup>T cells. Natural killer (NK) cells were isolated from PBMCs. NK cells were negatively selected with the NK cell isolation kit (Miltenyi Biotec, Germany), yielding NK cell populations at a purity of 96–99%. NK cells were stimulated with IL-15 (Miltenyi Biotec, 10 ng/mL), IL-2 (Proleukine, Chiron, Amsterdam 100 U/mL), and recombinant human interferon alpha-2a (Roferon-A) at the indicated dose. After 3 days of culture, expression of CD56, CD95, and NKG2D was measured by flow cytometry (Supplementary Table 2a).

### Antibody panels, staining, and flow cytometry analysis

Immunophenotypic studies were performed on frozen samples, using flow cytometry panels with up to 23 colors. Approximately  $1 \times 10^6$  to  $5 \times 10^6$  frozen PBMCs were used per patient per stain. Staining was performed as follows, except for the panel using HLA-E or HLA-A\*02 pentamers (ProImmune). PBMCs were thawed using RPMI supplemented with 20% FCS per standard protocol. Cells were resuspended in 45  $\mu$ L FACS buffer (PBS supplemented with 0.5% BSA and 2 mM EDTA). To block Fc receptor binding, 5  $\mu$ L of FcR Blocking Reagent (Miltenyi Biotec, Paris, France) was added to the cells for 10 minutes at 4  $^{\circ}$ C, following the manufacturer's instructions. Cells were washed once with FACS buffer before the staining. Staining was performed in several stages, depending on the number of antibodies. The first mAb cocktail for surface staining, prepared with brilliant ultraviolet, brilliant violet, and brilliant blue antibodies in Brilliant Stain Buffer Plus (BD Biosciences, Paris, France), was added to the cells, followed by incubation for 30 min at 4  $^{\circ}$ C (see Supplementary Table 2 for antibody panel information). Cells were washed once with FACS buffer before the second mAb cocktail was added, which contained all other antibodies in FACS buffer for surface staining and viability staining, followed by further incubation for 30 min at 4  $^{\circ}$ C. When needed, cells were fixed and permeabilized using the Foxp3 Staining Buffer Set (eBioscience, Paris, France) according to the manufacturer's protocol. Cells were then stained for intracellular targets with the third mAb cocktail in the kit's permeabilization buffer. After incubation, cells were washed with permeabilization buffer and FACS buffer. When using HLA-E or HLA-A\*02 pentamers (ProImmune), pre-incubation with a blocking anti-CD94 mAb (clone HP-3D9, 5  $\mu$ g/mL, BD Biosciences) was performed to completely abrogate the non-specific staining of CD94<sup>+</sup>/NKG2<sup>+</sup> T cells by HLA-E pentamers before the staining with the other antibodies. Before use within this panel, all antibodies were titrated individually to identify the concentration that provided the maximal brightness of the positive cell population and the lowest signal for the negative cell population. Cells were acquired on a Cytex Aurora flow cytometer. Data were analysed using FlowJo software (FlowJo, LLC). Flow cytometry data were identified as the proportion (%) of cells expressing the marker, and protein levels as median fluorescence intensity. The gating strategy used to identify the immune cell subtypes and their respective subsets is depicted in Supplementary Fig. 1. Unsupervised analyses were performed using Cytobank software and R studio software.

### 7-AAD (7-amino-actinomycin D) staining

Apoptosis of stimulated CFDA-labeled CD4<sup>+</sup>T cells was determined using the 7-AAD assay<sup>20</sup>. Briefly, cultured cells were stained with 20  $\mu$ g/mL nuclear

dye 7-AAD (Sigma-Aldrich) for 30 min at 4 °C. FSC/7-AAD dot plots distinguish living (FSC<sup>high</sup>/7-AAD<sup>-</sup>) from apoptotic (FSC<sup>high</sup>/7-AAD<sup>+</sup>) cells and apoptotic bodies (FSC<sup>low</sup>/7-AAD<sup>+</sup>) and debris (FSC<sup>low</sup>/7-AAD<sup>-</sup>). Living cells were identified as CD3<sup>+</sup>7-AAD<sup>-</sup>FSC<sup>+</sup> cells.

### CellTrace violet staining

CD4<sup>+</sup>T cells and NK cells were stained with 1 μM dye (CellTrace violet; Molecular Probes/Invitrogen) in PBS for 8 min at 37 °C at a concentration of  $1 \times 10^6$  cells/mL. The labeling was stopped by washing the cells twice with RPMI-1640 culture medium containing 10% FBS. The cells were then resuspended at the desired concentration and subsequently used for proliferation assays.

### Composite cell phenotypic alteration score

We generated a cumulative phenotypic score for each T cell subset. The frequency of the following markers was used to calculate the score: CD25<sup>-</sup>, CD26<sup>-</sup>, HLA-DR<sup>+</sup>, CD38<sup>+</sup>, CTLA-4<sup>+</sup>, CD28<sup>-</sup>, PD1<sup>+</sup>, and CD39<sup>+</sup>. The score is calculated as the sum of the ratio of the expression level of each marker to the average expression level of the corresponding marker in HDs.

### Cytokine quantification

Serum IFN $\alpha$  and IFN $\lambda$ 2 levels were determined using SIMOA cytokine assays (references 100860 and 101419, respectively). Van der Sluis et al. showed that HIV infection of co-cultures of CD4<sup>+</sup>T cells and pDCs enhances mRNA expression of IFN $\lambda$ 2 and not IFN $\lambda$ 1 or IFN $\lambda$ 3, so we focused only on serum IFN $\lambda$ 2 levels<sup>21</sup>. IL-10 in 4-day cell culture supernatants was determined by Luminex technology (human custom Procarta Plex, Invitrogen).

### Statistics and reproducibility

Comparisons between the two groups were made using the Mann–Whitney *U*-test. Multiple group comparisons were made using the Kruskal–Wallis test with Dunn's multiple comparison testing. Error bars on graphs represent interquartile ranges. Correlations were assessed using the nonparametric Spearman test. Analyses were performed with GraphPad Prism and R. A two-sided *p* value less than 0.05 was considered statistically significant (ns: not significant; \**p* < 0.05; \*\**p* < 0.01; \*\*\**p* < 0.001; \*\*\*\**p* < 0.0001).

### Reporting summary

Further information on research design is available in the Nature Portfolio Reporting Summary linked to this article.

### Results

As detailed in the methods, in untreated non-ECs, ECs, and HDs, we compared IFN $\alpha$  and IFN $\lambda$ 2 serum concentration, the distribution of immune cell subsets, and the frequency of cell markers associated with immune dysfunction. These endpoints include abnormal expression of checkpoint receptors or molecules controlling immune cell function such as inhibitory checkpoint receptors (PD1, CTLA-4) that lead cells to the exhaustion stage<sup>22</sup>; cell receptor markers of activation/differentiation (CD25/CD38/HLA-DR) associated with chronic immune activation<sup>23</sup>; checkpoint receptors controlling pericellular levels of immunosuppressive adenosine (CD39 ectonucleotidases, CD26 harboring adenosine deaminase)<sup>24</sup>; apoptotic cell receptors (CD95); and soluble suppressive mediators (IL-10). This phenotypic study focuses particularly on cytotoxic NK cells, HLA-1a-(B)-restricted CD8<sup>+</sup> cytotoxic T lymphocyte (CTL) cells, and HLA-1b-(E)-restricted CD8<sup>+</sup> suppressive cells (CD8<sup>+</sup>supps). Of interest, CD8<sup>+</sup>supp cells, which lyse abnormal CD4<sup>+</sup>T cells expressing HIV peptides in the HLA-E-restricted context, also are present in other chronic inflammatory diseases, including autoimmune diseases<sup>25</sup>, cancer<sup>26</sup>, and other microbial infections<sup>27</sup>.

### IFN $\alpha$ is elevated in HIV-infected non-ECs and modifies the distribution of blood immune cell types

Principal component analysis (PCA) of blood immune cell type distribution among non-ECs, ECs, and HDs shows that non-ECs and HDs cluster apart, whereas ECs overlap with both of the other groups (Fig. 1a). Figure 1b, c

show the distinct proportion of circulating immune cell types in non-ECs, ECs, and HDs. We find that the serum concentration of IFN $\alpha$  but not of IFN $\lambda$ 2 is abnormally increased in non-ECs compared with HDs and the large majority of ECs (Fig. 1d). We also find a positive correlation between IFN $\lambda$ 2 and IFN $\alpha$  serum levels in ECs but not in non-EC patients (Fig. 1eI). Moreover, serum IFN $\lambda$ 2 concentration is negatively associated with CD4<sup>+</sup>T cell frequency and positively associated with CD8<sup>+</sup>T cell frequency in non-ECs (Fig. 1eII, eIII).

### Elevated IFN $\alpha$ induces an abnormal frequency and phenotypic alterations of NK cells and other innate cell types in non-ECs but not in ECs

NK cells are a heterogeneous population of immune cells<sup>28</sup>, as SPADE analysis (Fig. 2aI) and dot plots (Fig. 2aII) demonstrate. As previously reported<sup>29</sup>, we find that non-ECs have fewer early and mature NK cells than do HDs (2.58 vs 4.61% and 48.1 vs 83.2%, respectively), and many more terminal NK cells (17.91 vs 2.84%) (Fig. 2aIII). ECs and HDs have similar proportions of NK cell subsets. In the mature NK subset, the activating markers Helios, natural cytotoxicity receptors, and GrzB/perf are less frequent in non-ECs than in ECs and HDs (Fig. 2bI, bII). Inhibitory killer-cell immunoglobulin-like receptors (iKIRs) bind HIV peptides present on HLA-1b in activated CD4<sup>+</sup>T cells as well as the inhibitory checkpoint receptors PD1 or CD39, leading cells to an exhaustion-like status<sup>22</sup>. We find that iKIRs are overexpressed in non-ECs compared with ECs and HDs (Fig. 2bIII, IV). Of note, CD38 and HLA-DR are prevalent in non-EC mature NK cells. In addition, IFN $\alpha$  levels correlate positively with the frequency of iKIR<sup>+</sup> mature NK cells (Fig. 2cI), terminal NK cells (Fig. 2cII), and iKIR<sup>+</sup> terminal NK cells (Fig. 2cIII). This finding is consistent with the concept that IFN $\alpha$  enhances the development of non-functional NK cells. Furthermore, indicative of loss of function among NK cells in non-ECs, we find that the activation marker NKG2D is only weakly expressed on early NK cells (Fig. 2dI) in this group and that the apoptotic marker CD95 is highly expressed on mature NK cells (Fig. 2dII), respectively reducing their cytotoxic activity and increasing their propensity to apoptosis.

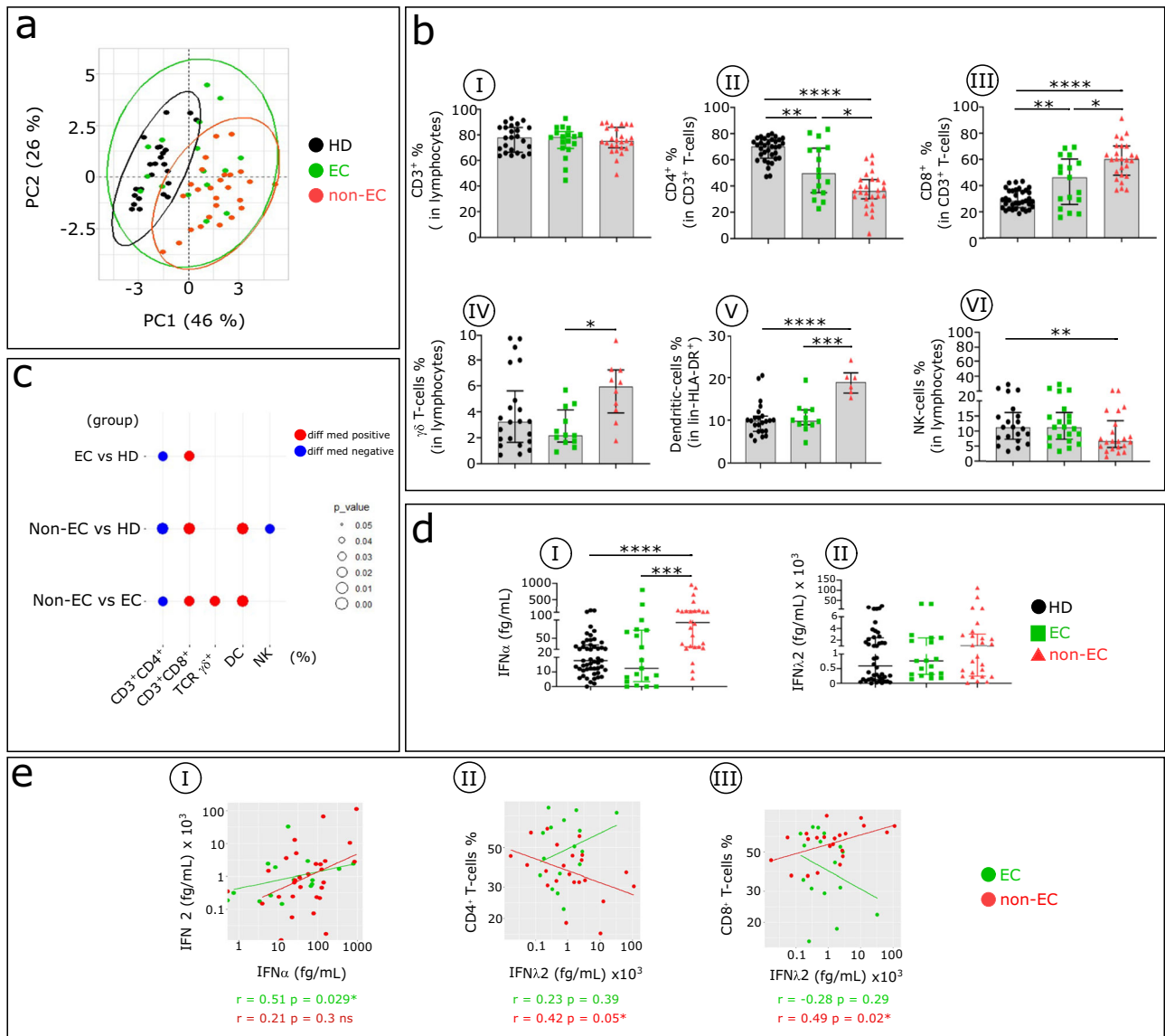
To investigate whether elevated IFN $\alpha$  induces these altered NK cell subset distribution and surface phenotypes, we treated in vitro-purified NK cells with increasing doses of IFN $\alpha$ . We find that elevated IFN $\alpha$  inhibits NK cell viability and proliferation capability in a dose-dependent manner (Fig. 2eI, eII). Furthermore, elevated IFN $\alpha$  reduces CD56 expression in CD56<sup>dim/hi</sup>NK cells (Fig. 2eIII), leading to a decrease in the frequency of mature NK cells and a concomitant increase in the percentage of terminal NK cells (Fig. 2eIV). The addition of increasing amounts of IFN $\alpha$  to NK cell culture induces a dose-dependent decrease in NKG2D expression in early NK cells (Fig. 2eV) and an increase in CD95 expression in mature NK cells (Fig. 2eVI). In summary, elevated IFN $\alpha$  levels can, in large part, induce the NK cell abnormalities observed in non-ECs.

Regarding other innate immune cells, the frequency of CD11c<sup>-</sup>/CD123<sup>+</sup> plasmacytoid dendritic cells (pDCs) is lower in non-ECs than in ECs (13.4 versus 32.5%, respectively) (Supplementary Fig. 2a). This observation was previously made by others<sup>30,31</sup>.  $\gamma\delta$ T cells show an abnormally high expression of inhibitory checkpoint receptors in non-ECs (Supplementary Fig. 2b). The expression of these checkpoint receptors, including CD38<sup>32</sup> and HLA-DR<sup>32</sup>, is triggered directly by IFN $\alpha$  and indirectly by loss of CD26<sup>19</sup>.

### Elevated IFN $\alpha$ alters immune cell homeostasis in non-ECs compared with HDs and a majority of ECs

Homeostatic disturbances of T cell subsets after HIV infection are hallmarks of early disease. From our investigation of the maintenance of CCR7<sup>+</sup>CD4<sup>+</sup> and CD8<sup>+</sup>T cells in the three groups, as anticipated, we observe a lower frequency of both T cell subsets in non-ECs compared with ECs and HDs (Supplementary Fig. 2cI, cII). In addition, we find negative correlations between CD4<sup>+</sup> and CD8<sup>+</sup> central memory (CM) T cell frequency and serum IFN $\alpha$  levels in HIV patients (ECs + non-ECs) (Supplementary Fig. 2cIII, cIV). This result reflects the pathogenic inhibitory effects of IFN $\alpha$  on IL-7-induced homeostatic T cell proliferation<sup>7</sup> in CD4<sup>+</sup> and CD8<sup>+</sup>CCR7<sup>+</sup>T cells homing to





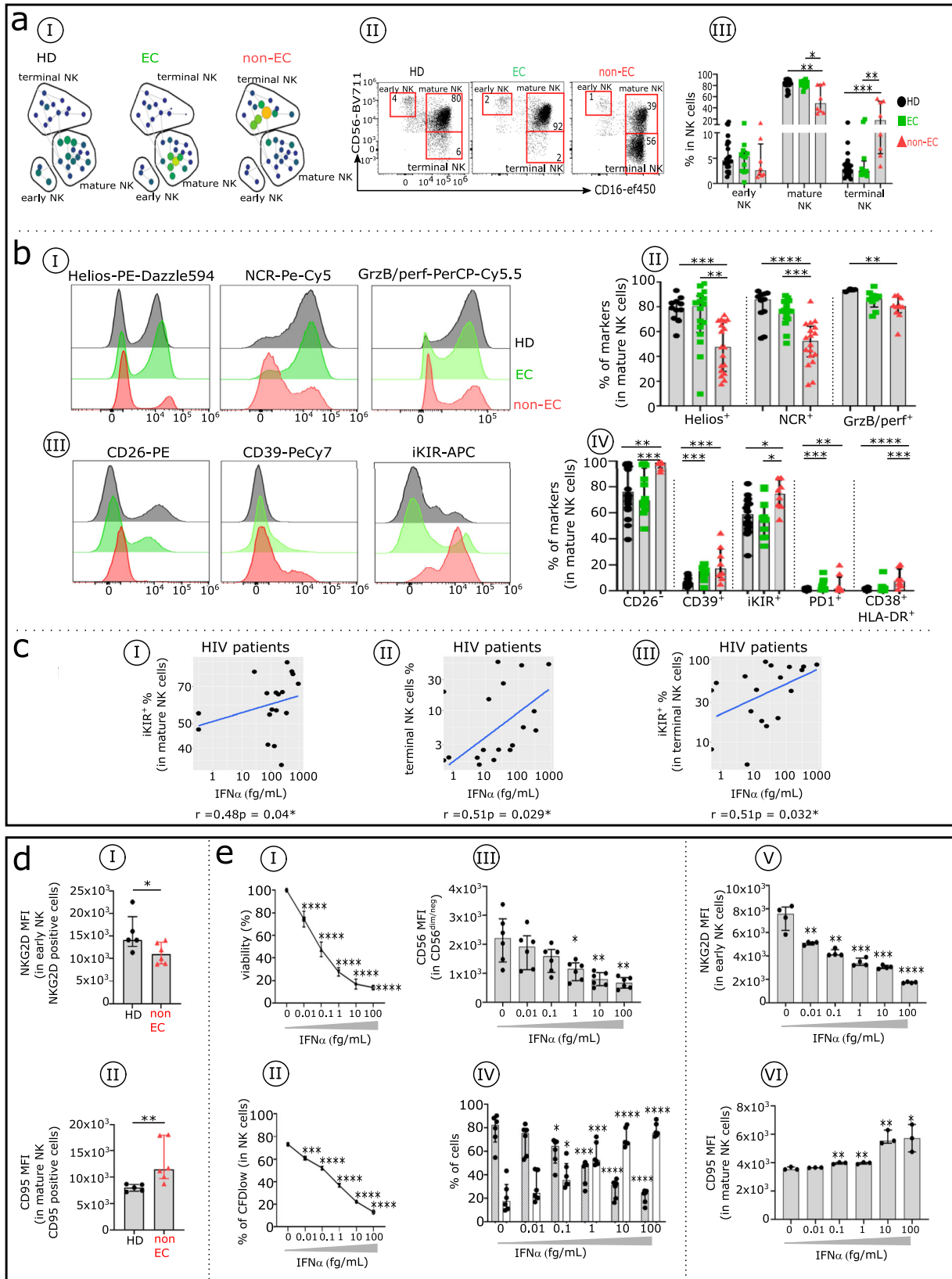
**Fig. 1 | Comparative analysis of major blood immune cell subsets and serum IFN $\alpha$  and IFN $\lambda$ 2 concentrations in non-ECs, ECs, and HDs.** **a** PCA of data based on the proportion of different immune cell subpopulations (CD4<sup>+</sup>, CD8<sup>+</sup>, and TCR  $\gamma\delta$  T-cells, NKs, and DCs), evaluated by flow cytometry. Immune cell profiling was assessed by flow cytometry, as depicted in Supplementary Fig. 1. The first two principal components (PC1 and PC2) explaining the greatest differences among individuals are represented on a bi-plot. Each point represents one participant, with colors indicating the group: HDs (black), ECs (green), and non-ECs (red). Each group is outlined by an ellipse representing the 95% confidence interval of the sample groupings. **b** Histograms show distributions of indicated immune cell populations between HDs (black), ECs (green), and non-ECs (red). Analysis was done in 24 HDs, 16 ECs, and 26 non-ECs for all populations except for  $\gamma\delta$  T cells and DC (lin<sup>-</sup>HLA-DR<sup>+</sup>) (22 HDs, 12 ECs, 10 non-ECs). **c** Balloon plot summarizes the statistically

significant changes in the indicated immune cell populations between ECs and HDs, non-ECs and HDs, and non-ECs and ECs. The size of the circle represents the *p* value. Red and blue indicate increased or decreased frequencies of immune cell populations. **d** Scatterplots show IFN $\alpha$  and IFN $\lambda$ 2 concentration in serum from HDs (*n* = 51), ECs (*n* = 18), and non-ECs (*n* = 26). IFN $\alpha$  and IFN $\lambda$ 2 levels were detected using SIMOA. **e** Scatterplot of relationships between IFN $\alpha$  and IFN $\lambda$ 2 serum levels (**eI**), CD4<sup>+</sup>T cells and IFN $\lambda$ 2 (**eII**), and CD8<sup>+</sup>T cells and IFN $\lambda$ 2 (**eIII**) in ECs (*n* = 18) and non-ECs (*n* = 26). Correlations were evaluated using Spearman's rank correlation test. Multiple group comparisons were assessed using the Kruskal–Wallis test with Dunn's multiple comparison testing. Values are medians and *p* values (\**p* < 0.05, \*\**p* < 0.01, \*\*\**p* < 0.001, \*\*\*\**p* < 0.0001). Error bars on graphs represent interquartile ranges.

lymph nodes<sup>33</sup>. Interestingly, even though the frequency of EC<sub>B57+</sub> CD8<sup>+</sup>CM cells is similar to that of HDs, the frequency of EC<sub>B57-</sub> CD8<sup>+</sup>CM cells is reduced, albeit to a lesser degree than in non-ECs (Supplementary Fig. 2cV and Table 1). The maintenance of T cell homeostasis observed in EC<sub>B57+</sub> but not in EC<sub>B57-</sub> cases (Table 1) may be accounted for by the homology between HLA<sub>B57+</sub> and NK iKIR (specifically the 3DL1 allele) sharing the bw4 serotype. Therefore, iKIR<sup>+</sup> NKs do not recognize HLA<sub>B57</sub> peptide epitopes, and NK cell killing is not inhibited, which enables the unaltered EC<sub>B57+</sub> iKIR<sup>+</sup> NK cell lysis of infected CD4<sup>+</sup>T cells, resulting in reduced viral load and a correlated IFN $\alpha$  production level<sup>34</sup>. Consequently, upon TCR stimulation, the percentage of

CM T cells that differentiate into CD4<sup>+</sup>T helper and cytotoxic CD8<sup>+</sup>T cells declines in non-ECs but not in EC<sub>B57+</sub> cases.

In addition to the direct killing of some CD4<sup>+</sup>T cells by HIV, early HIV regulatory proteins Nef and Tat are released during the acute phase of infection. Nef reduces cellular HLA-1a expression<sup>35</sup>, and Tat enhances IFN $\alpha$  production by macrophages<sup>5</sup>, thus contributing along with high HIV levels to elevated IFN $\alpha$ . This effect, in turn, leads to phenotypic and functional alterations in NK cells. The outcome is a lack of early lysis of infected CD4<sup>+</sup>T cells in most HIV-infected patients, as we show here. These immune cell alterations are spared in ECs.



**Elevated IFN $\alpha$  in non-ECs is associated with a high frequency of IFN $\alpha$ -induced phenotypic abnormalities in CD4<sup>+</sup> and CD8<sup>+</sup> T cells**

We first identify the major circulating CD4<sup>+</sup>Tconv (T helper Foxp3) cell subsets at different maturation stages based on their surface expression of CCR7 and CD45RA<sup>36</sup>. SPADE analysis done on conventional T cells

(Tconv; Fig. 3aI) and histograms (Fig. 3aII) show a varied frequency of their subtypes in both non-ECs and ECs compared with HDs. Both ECs and non-ECs have significantly lower frequencies of naive CD4<sup>+</sup>T cells compared with HDs. ECs have higher frequencies of CMs and effector memory (EM) T cells that re-express CD45RA (TEMRA), and non-ECs have higher

**Fig. 2 | Comparative distribution and immune phenotypic analysis of innate immune NK cells in HDs, ECs, and non-ECs.** **aI** SPADE tree with the distribution of the three main NK cell subsets in HDs (black), ECs (green), and non-ECs (red), based on CD56 and CD16 expression levels. Nodes are colored by count. **aII** Representative flow cytometry plots of NK cell subsets gated on CD19<sup>-</sup>CD14<sup>-</sup>TCRγδ<sup>-</sup>CD3<sup>-</sup>HLA-DR<sup>-</sup> cells from the three studied groups: early NK (CD56<sup>bright</sup>/CD16<sup>-</sup>), mature NK (CD56<sup>dim</sup>/CD16<sup>+</sup>), and terminal NK (CD56<sup>-</sup>CD16<sup>+</sup>). **aIII** Frequency of early, mature, and terminal NK cells in each studied group (HDs *n* = 22, ECs *n* = 12, and non-ECs *n* = 8). **b** Differential expression of checkpoint molecules on mature NK cells among HDs, ECs, and non-ECs. Profiles display the expression level of Helios, natural cytotoxicity receptors (NKp30, NKp44, and NKp46), granzyme/perforin (GrzB/perf) (**bI**), and CD26, CD39, inhibitory killer Ig-like receptors (iKIR) (**bIII**) on mature NK cells from HDs (black), ECs (green), and non-ECs (red). (**bII** and **bIV**). Boxplots displaying the frequency of the indicated markers in mature NK cells in each studied group. Analysis was done in 22 HDs, 12 ECs, and 8 non-ECs for all markers except for Helios and NCR (11 HDs,

16 ECs, 18 non-ECs) and GrzB/perf (3 HDs, 9 ECs, 10 non-ECs). **c** Scatterplots of the relationships between IFNα serum level and the frequencies of selected NK cell subsets. Correlations were evaluated using Spearman's rank correlation test. **d** Comparison of NKG2D et CD95 level between HDs and non-ECs in early and mature NK cells. Histograms show the expression level (measured by median fluorescence intensity [MFI]) of NKG2D in early NK cells (**dI**) and CD95 in mature NK cells (**dII**) in non-ECs (*n* = 6) and HDs (*n* = 5). **e** IFNα effects on NK cell viability, proliferation and phenotype. Percentage of viable NK cells (*n* = 3) (**eI**) and frequency of CFDP<sup>low</sup> NK cells (*n* = 3) (**eII**) after 7 days of culture in the presence of increasing doses of IFNα. Histograms show the expression level of CD56 in CD56<sup>dim</sup>/<sup>neg</sup> NK cells (*n* = 6) (**eIII**), distribution of mature (gray) and terminal NK cells (white) (*n* = 6) (**eIV**), expression levels of NKG2D in early NK cells (*n* = 3) (**eV**), and CD95 in mature NK cells (*n* = 3) (**eVI**) after 3 days of culture in the presence of IFNα. Comparisons between the two groups were performed using the Mann–Whitney *U*-test. Multiple group comparisons were made using the Kruskal–Wallis test with Dunn's multiple comparison testing. \**p* < 0.05, \*\**p* < 0.01, \*\*\**p* < 0.001, and \*\*\*\**p* < 0.0001. Error bars on graphs represent interquartile ranges.

**Table 1 | Contribution of immune mechanisms to EC status**

Group	Sample	VL	CD4 count (copies/mL)	IFNα (fg/mL)	IFNλ (fg/mL)	pDC (%)	CD8 <sup>+</sup> CM (%)	CTL PD1 <sup>-</sup> (%)†	CD8 <sup>+</sup> supp PD1 <sup>-</sup> (%)†	Mature NK NKG2C <sup>+</sup> (%)†	Mature NK iKIR <sup>+</sup> (%)†	Mature NK PD1 <sup>-</sup> (%)†
B57-	EC 47	<20	891	3.37**	171.96	NA	5.7	37.75	23.15	11.7	26.8	72.72
	EC 58	59	1745	5.58**	2389.62	13.9	6.04	35.36	22.62	26.5	37.1	62.14
	EC13	<40	864	6.45**	257.48	58.7*	13.5*	55.07*	4.51	33.8	66.8*	32.91*
	EC 32	<48	643	7.66**	319.75	NA	NA	NA	NA	NA	NA	NA
	<b>EC31</b>	<48	587	67.31	500.06	28.6	3.86	47.04	32.25*	23.4	38.7	59.59
	EC 55	50	482	72.21	578.54	NA	6.91	29.93	30.19*	23.5	27.7	72.06
	EC 3	334	1140	74.43	766.29	NA	0.77	44.41	21.57*	25.9	46.2	53.41
B57+	EC 63	<40	632	0**	338.45	50.4*	27.7*	61.37*	8.86	17	55.8*	43.85
	EC 9	<40	496	0**	182.96	9.98	16.7*	33.33	2.83	7.79	74.4*	25.30*
	<b>EC65</b>	<48	1792	0.75**	308.57	37.9	9.25*	57.82*	14.41	19.4	20.3	78.37
	EC 6	<75	1889	8.48**	1875.86	11.5	21.7*	46.04	7.91	12.8	61.2*	38.60
	EC 42	<220	731	12.44**	142.63	35.9	10.4*	42.67	20.62	14.7	44.7	52.04
	EC51	<40	1250	18.1**	3244.14*	51.3*	9.39*	53.55*	8.61	9.14	54.5*	45.34
	EC 4	<40	952	25.28**	774.38	8.17	9.37*	25.74	5.94	5.61	47.2	52.54
	<b>EC8</b>	<40	1018	57.14**	2873.66*	36.9	10.1*	46.45	8.23	4.89	66.8*	32.96*
	EC11 <sup>+</sup>	<40	917	348.08*	1639.51	7.29	13.9*	17.16	0.95	9.14	41.3	51.48
	EC52 <sup>+</sup>	<20	340	796.94*	2384.02*	NA	6.85	38.43	13.71	12.6	41.7	57.82
	EC68 <sup>+</sup>	169	584	99.63	830.17	NA	NA	NA	NA	NA	NA	NA
B57- <i>n</i> = 7, median	59	864	72.21	500.06	21.25	5.7	37.75	22.62	24.7	37.1	62.14	
B57+ <i>n</i> = 11, median	<40	917	99.63	556.415	11.5	6.85	38.43	8.42	10.87	41.7	51.76	
Non-ECs <i>n</i> = 26, median	21701	404.5	93.01	1027.92	13.7	4.155	42.90	19.12	28.85	36.4	59.60	
HDs <i>n</i> = 65, median	NA	NA	17.72	595.35	26.7	9.92	41.47	20.27	4.14	50.95	48.85	
ECs <i>n</i> = 18, median	114	877.5	73.32	500.06	13.9	5.87	38.09	8.61	13.75	40	53.41	

The table details enhanced (\*) or diminished (\*\*) immune mechanisms contributing to the EC status in EC individuals compared with non-ECs.

1) Three patients lost their EC status: EC31 and EC65 were volunteers for a cART trial, and EC8 had colonic carcinoma complications (bold).

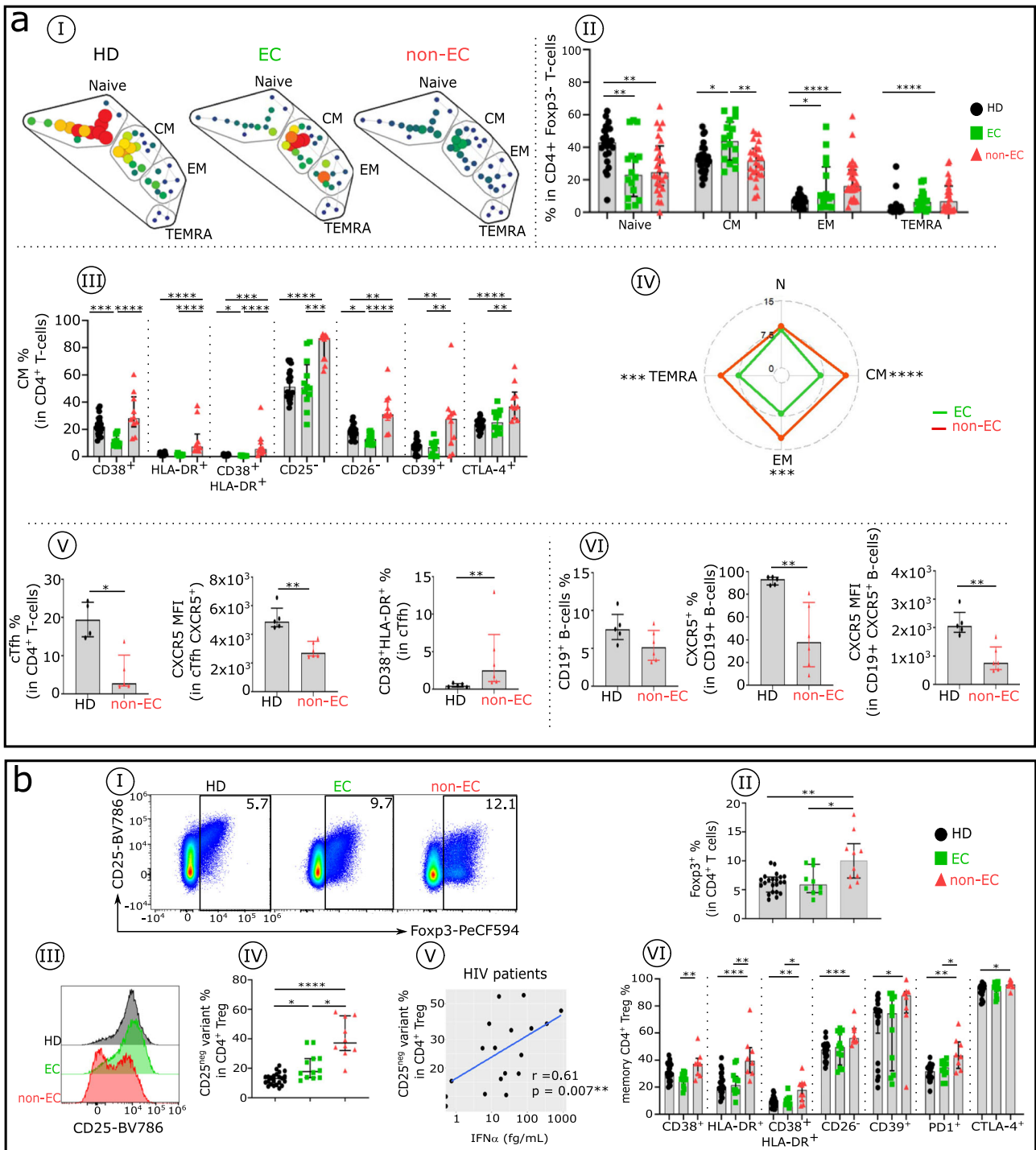
2) Three individuals (EC11, EC52, and EC68) had a serum IFNα over the non-ECs median (+).

3) Note that cytotoxic NK cells and CTL and CD8<sup>+</sup> supp cells in non-ECs are phenotypically hampered (†).

NA not available.

frequencies of EM and TEMRA cells (Fig. 3aII). Our exploration of changes in activation/exhaustion phenotypes in CD4<sup>+</sup>T cell subsets in non-ECs compared with ECs and HDs shows that the absence (CD26, CD25, CD28) or increase (CD38, HLA-DR, CD39, PD1, and CTLA-4) of these markers is linked to an exhaustion-like state associated with lack of function<sup>22</sup>. Each Tconv subset displays a distinct, altered phenotypic profile in non-ECs

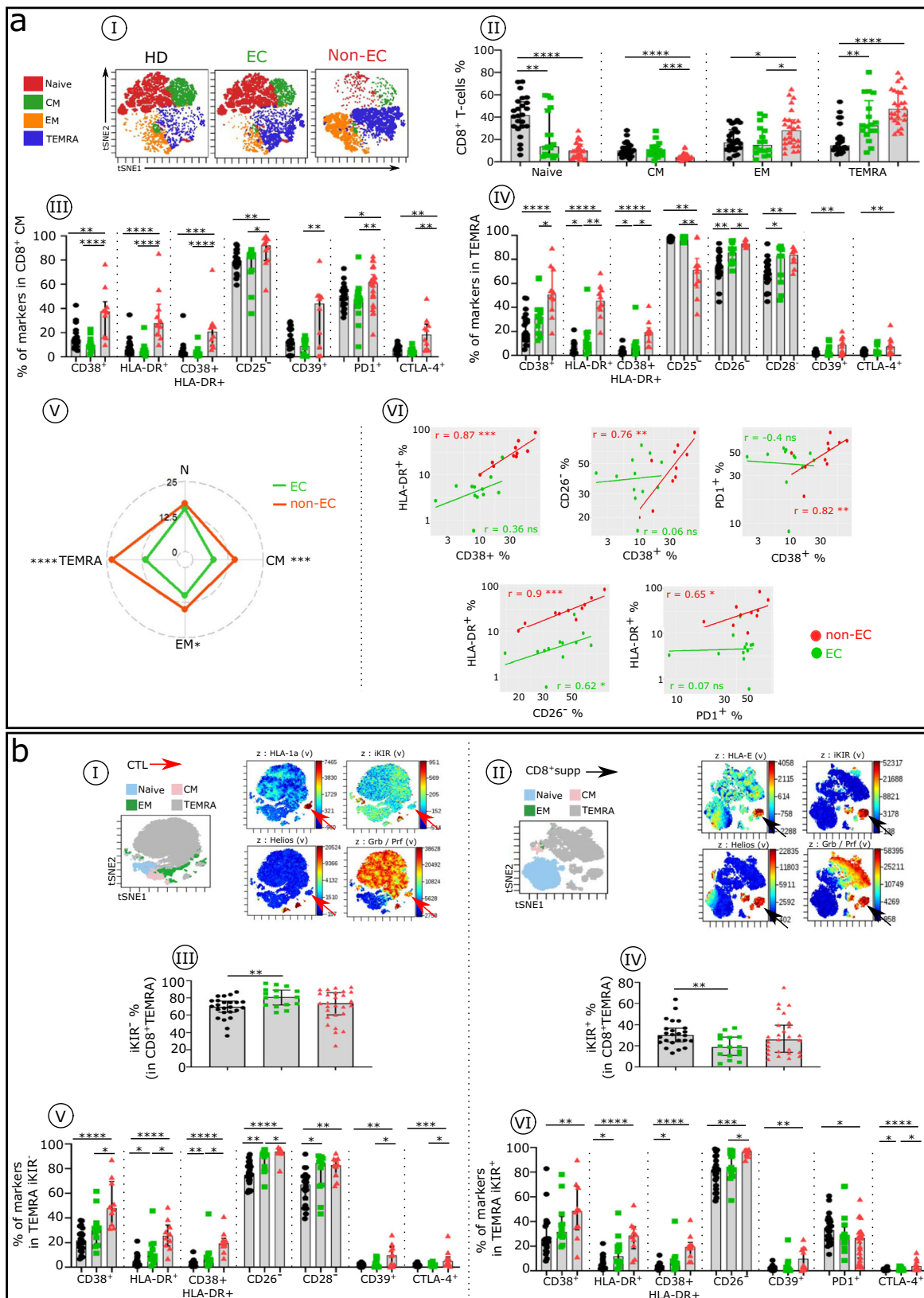
compared with ECs and HDs (Fig. 3aIII and Supplementary Fig. 3). CM, EM, and TEMRA cells from non-ECs exhibit significantly higher phenotypic alteration scores (see methods) compared with the same cell types from ECs (Fig. 3aIV). These phenotypic abnormalities correspond in large part to the IFNα effects on CD4<sup>+</sup>T cells in culture (Supplementary Table 3 and Supplementary Fig. 4). This pattern is consistent with the presence of



**Fig. 3 | Phenotypic analysis of CD4<sup>+</sup> Tconv cell subsets, CD4<sup>+</sup> Treg cell subsets and CD19<sup>+</sup> B cells in HDs, ECs, and non-ECs.** Comparative immune phenotypic analysis of **a** CD4<sup>+</sup>Tconv and CD19<sup>+</sup>B cells and **b** CD4<sup>+</sup>Treg cells in non-ECs, ECs, and HDs. **aI** SPADE tree with the distribution of CD4<sup>+</sup>Tconv subsets in HDs (black), ECs (green), and non-ECs (red). Nodes are colored by count. CD4<sup>+</sup>Tconv cells can be classified into four major subsets by their expression of CD45RA and the chemokine receptor CCR7: naïve (CCR7<sup>+</sup>CD45RA<sup>+</sup>), CM (CCR7<sup>+</sup>CD45RA<sup>-</sup>), EM (CCR7<sup>-</sup>CD45RA<sup>-</sup>), and TEMRA (CCR7<sup>-</sup>CD45RA<sup>+</sup>). **aII** Frequency of naïve, CM, EM, and TEMRA cells in each studied group (HDs  $n = 24$ , ECs  $n = 16$ , and non-ECs  $n = 23$ ). Boxplots show the expression of the indicated marker in CD4<sup>+</sup> CM cells (**aIII**) across the groups (HDs  $n = 22$ , ECs  $n = 12$ , and non-ECs  $n = 8$ ). **aIV** Radar chart of the composite scores of phenotypic cell alteration calculated for each CD4<sup>+</sup>Tconv subpopulation in non-ECs and ECs (see Methods). **aV** Frequency of circulating T follicular helper cells (cTfh), expression levels of CXCR5 in cTfh, and frequency of cTfh co-expressing CD38 and HLA-DR in non-ECs ( $n = 6$ ) and HDs

( $n = 5$ ). **aVI** Proportion of CD19<sup>+</sup> B cells and frequency and expression level of CXCR5 in CD19<sup>+</sup> B cells in non-ECs ( $n = 6$ ) and HDs ( $n = 5$ ). **bI** Representative flow cytometry plots of CD25<sup>+</sup>Foxp3<sup>+</sup> cells within CD4<sup>+</sup>T cells isolated from HDs ( $n = 22$ ), ECs ( $n = 12$ ), and non-ECs ( $n = 8$ ). **bII** Histograms with the frequency of Foxp3 in CD4<sup>+</sup>T cells and **bIII** displaying the CD25 expression level in CD4<sup>+</sup>Foxp3<sup>+</sup>T cells and **bIV** the regulatory T cell (Treg) CD25<sup>-</sup> variant frequency in CD4<sup>+</sup>Foxp3<sup>+</sup>T cells in each studied group. **bV** Scatterplots of the relationships between frequency of the Treg CD25<sup>-</sup> variant in HIV-infected patients and serum IFN $\alpha$  levels. **bVI** Proportion of a specific functional signaling checkpoint on memory CD4<sup>+</sup> Treg (CD4<sup>+</sup> Foxp3<sup>+</sup>CD25<sup>-</sup>CD45RA<sup>-</sup>) cells of each studied group (HDs  $n = 22$ , ECs  $n = 12$ , and non-ECs  $n = 8$ ). Correlations were evaluated using Spearman's rank correlation test. Comparisons between the two groups were made with the Mann-Whitney  $U$ -test. Multiple group comparisons were assessed using the Kruskal-Wallis test with Dunn's multiple comparison testing. \* $p < 0.05$ , \*\* $p < 0.01$ , \*\*\* $p < 0.001$ , \*\*\*\* $p < 0.0001$ . Error bars on graphs represent interquartile ranges.





one key HIV pathogenic mediator: the effect of elevated IFN $\alpha$  in non-ECs. Furthermore, we find positive correlations between expression levels of different abnormally expressed markers studied in the CD4<sup>+</sup>CM cells in non-ECs, but we do not observe these correlations in ECs (Supplementary Fig. 3d).

We then investigated the circulating CXCR5<sup>+</sup>CD45RO<sup>+</sup>CD4<sup>+</sup> T follicular helper cells (cTfh) that govern B cell hypersomatic mutation and Ig isotype commutation in follicular lymph nodes. Compared with HDs, non-ECs have a lower frequency of cTfh cells, and on these cells, they have a lower CXCR5 expression level and higher coexpression of CD38 and HLA-DR

**Fig. 4 | Comparative immune phenotypic analysis of CD8<sup>+</sup>T cell subsets in non-ECs, ECs, and HDs.** **a** Comparative analysis of CD8<sup>+</sup>T cell subsets distribution and phenotype in HDs, ECs, and non-ECs. **aI** Representative viSNE plot showing the distribution of CD8<sup>+</sup>T cell subsets, as described in Fig. 3 for CD4<sup>+</sup>Tconv in HDs (black), ECs (green), and non-ECs (red). **aII** Histograms of the frequencies of naive, CM, EM, and TEMRA CD8<sup>+</sup>T cell subsets in each studied group (HDs *n* = 24, ECs *n* = 16, and non-ECs *n* = 23). Boxplots show the expression of the indicated marker in CD8<sup>+</sup>CM (**aIII**) and TEMRA (**aIV**) cells across the groups (HDs *n* = 22, ECs *n* = 12, and non-ECs *n* = 8). **aV** Radar chart of the composite scores of phenotypic cell alterations calculated for each CD8<sup>+</sup>T cell subpopulation in ECs and non-ECs (ECs *n* = 12 and non-ECs *n* = 8). **aVI** Scatterplots of the relationships between the expression level of indicated markers in CD8<sup>+</sup>CM cells (ECs *n* = 12 and non-ECs *n* = 8). **b** viSNE plot of the phenotypic difference between CD8<sup>+</sup>CTL (TEMRA

iKIR<sup>-</sup>) (**bI**) and CD8<sup>+</sup> suppressive T cells (CD8<sup>+</sup>supp) (TEMRA iKIR<sup>+</sup>) (**bII**). t-SNE plot of CD8<sup>+</sup>T cell subsets indicated in different colors, with viSNE projections of expression of indicated markers. Red and black arrows indicate HLA-1a-restricted and HLA-E-restricted CD8<sup>+</sup>supp cells, respectively. Histograms show the frequency of CD8<sup>+</sup>TEMRA iKIR<sup>-</sup> (**bIII**) and TEMRA iKIR<sup>+</sup> (**bIV**) in each studied group (HDs *n* = 24, ECs *n* = 16, and non-ECs *n* = 26). Boxplots give the proportion of specific markers on CD8<sup>+</sup>TEMRA iKIR<sup>-</sup> (**bV**) and TEMRA iKIR<sup>+</sup> (**bVI**) in each studied group (HDs *n* = 22, ECs *n* = 12, and non-ECs *n* = 8). Correlations were evaluated using Spearman's rank correlation test. Multiple group comparisons were made using the Kruskal–Wallis test with Dunn's multiple comparison testing. \**p* < 0.05, \*\**p* < 0.01, \*\*\**p* < 0.001, \*\*\*\**p* < 0.0001. Error bars on graphs represent interquartile ranges.

(Fig. 3aV). In addition, a similar frequency of CD19<sup>+</sup>B cells is seen between HDs and non-ECs, but non-ECs have a reduced percentage of CXCR5<sup>+</sup>B cells, which in turn have lower expression of CXCR5 (Fig. 3aVI). As for the regulatory CD4<sup>+</sup>T cell subset (CD4<sup>+</sup>Foxp3<sup>+</sup>), their frequency and function are altered in non-ECs but not in ECs (Fig. 3b). Their proportion is increased in non-ECs (Fig. 3bI, bII), and the percentage of non-functional CD25<sup>-</sup>regulatory T cell (Treg) variants<sup>19</sup> is enhanced (Fig. 3bIII, bIV). Once again, serum IFN $\alpha$  level significantly correlates with this alteration (Fig. 3bV). In addition, multiple memory CD4<sup>+</sup>Treg phenotypic abnormalities are associated with IFN $\alpha$  in non-ECs, but these abnormalities are less numerous in ECs (Fig. 3bVI).

In a similar analysis of CD8<sup>+</sup>T cells in non-ECs compared with ECs and HDs, we examined four well-defined CD8<sup>+</sup>T cell subsets as described above for the Tconv. We find distinct distributions of CD8<sup>+</sup>T cell subsets in the three groups, as viSNE analysis (Fig. 4aI) and histograms (Fig. 4aII) show. Both ECs and non-ECs have a significantly lower frequency of naive CD4<sup>+</sup>T cells compared with HDs. Non-ECs also have fewer CM cells and more EM and TEMRA cells than do HDs and ECs (Fig. 4aI, aII). As for the Tconv subsets, each CD8<sup>+</sup>T cell subset has a distinct pattern of phenotypic alterations in non-ECs compared with ECs and HDs (Fig. 4aIII, 4aIV). Non-EC CM and TEMRA cells have a higher phenotypic alteration score than these cells do in ECs (Fig. 4aV). IFN $\alpha$  induces a large majority of these inhibitory checkpoint receptors (Supplementary Table 3). Furthermore, as described in Fig. 4aVI, in non-ECs, we find positive correlations between expression levels of the various studied markers in CD8<sup>+</sup>CM cells. CD8<sup>+</sup>HIV-specific cytotoxic T cells consist of effector HLA-1a-restricted CTLs and HLA-E-restricted CD8<sup>+</sup>supps carrying iKIRs, the human analog of Ly49, which characterize murine CD8<sup>+</sup>supp cells<sup>37,38</sup>. HLA-1a-(B)- and HLA-1b-(E)-presenting HIV peptide tetramers recognize CTLs (Fig. 4bI) and CD8<sup>+</sup>supps (Fig. 4bII), respectively. Using this pattern, we distinguish and phenotypically characterize the two types of cytotoxic CD8<sup>+</sup>T cells: CTLs (CD8<sup>+</sup>, TEMRA, GrzB/perf<sup>+</sup>, iKIR<sup>-</sup>, Helios<sup>-</sup>) and CD8<sup>+</sup>supps (CD8<sup>+</sup>, TEMRA, GrzB/perf<sup>+</sup>, iKIR<sup>+</sup>, Helios<sup>+</sup>). We find similar CTL frequencies in ECs and non-ECs (81.05 vs 74.15%) (Fig. 4bIII), but the inhibitory checkpoint receptor level is significantly higher in non-ECs than in ECs and HDs (Fig. 4bV), in keeping with the effect of elevated IFN $\alpha$ . This change leads to greater CTL activity in ECs. For the CD8<sup>+</sup>supp cells, non-ECs have a slightly higher percentage of these cells than do ECs (25.85 vs 18.95%) (Fig. 4bIV), with a more pronounced exhaustion-like state (CD38, CD39, HLA-DR) or downregulated markers (CD26) (Fig. 4bVI), all of which IFN $\alpha$  can induce. Of note, similar to the CTL cells, the CD8<sup>+</sup>supp cell frequency in ECs is variable from one individual to another.

#### Minimal anti-HIV immune cell phenotypic defects and control of HIV replication in ECs is linked to control of IFN $\alpha$

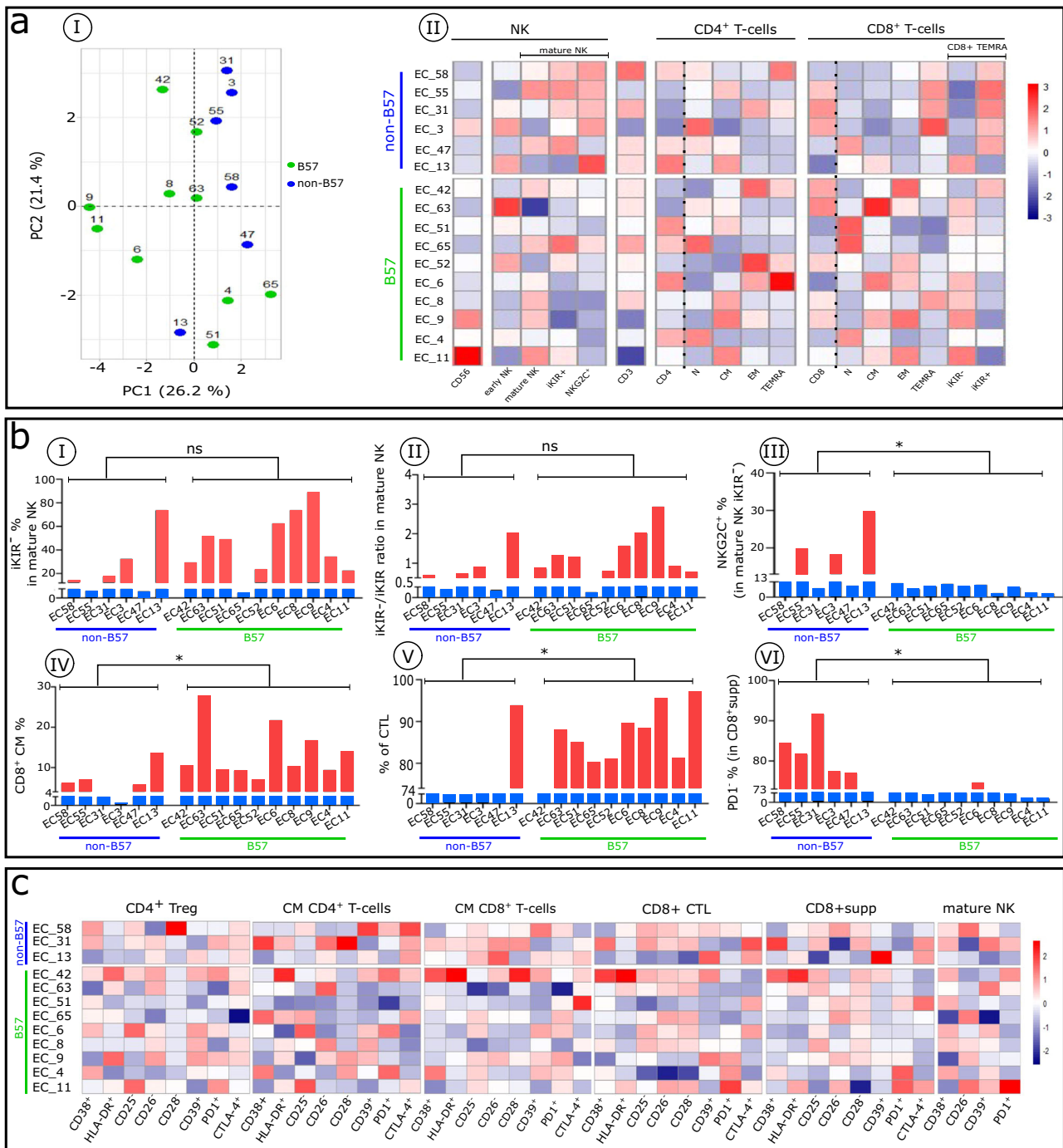
PCA analysis (Fig. 5aI) and heatmaps (Fig. 5aII) show that ECs, whether expressing the HLA-B57 (EC<sub>B57+</sub>) allele or not (EC<sub>B57-</sub>), have a distinct blood immune cell profile that is variable from individual to individual. Overall, this group expresses a few phenotypic alterations in large part induced by elevated IFN $\alpha$  (compared with non-ECs; Fig. 1d).

To further identify which anti-HIV immune function that is uncommon in humans could account for control of HIV replication in each EC, we investigated which anti-HIV factor(s) that neutralize circulating virions or lyse infected CD4<sup>+</sup>T cells might contribute to maintenance of the EC status. Considering the frequency of elevated IFN $\alpha$ -induced immune cell type phenotypic anomalies in non-ECs, we examined serum IFN $\alpha$  levels in all patients. The median is 95 fg/mL in non-ECs and 18 fg/mL in ECs. In our US HIV cohort, 16 of 20 non-ECs compared with 3 of 18 ECs show a higher IFN $\alpha$  level (Table 1). Interestingly, among the three ECs expressing elevated serum IFN $\alpha$ , EC11 and EC52 compensate their high IFN $\alpha$  level by expression of NK cells activating the NKG2C receptor and contributing to early lysis of infected CD4<sup>+</sup>T cells. The EC68 cell sample was not available (Table 1). Regarding IFN $\lambda$ , it is notable that only EC51 has a high level compared with other ECs (32000 vs 1027 fg/mL). pDC frequency is higher in ECs compared with other HIV-infected individuals (32 versus 14%, Table 1). It is unlikely that greater numbers of pDCs could be a key immune parameter leading to the EC state and control of elevated IFN $\alpha$ . Rather, it is likely that their increase results from better control of IFN $\alpha$  in the early days of infection, thereby avoiding its negative impact.

Given that NK cells act at the onset of infection and before the virus setpoint, we focused on them in both EC<sub>B57+</sub> and EC<sub>B57-</sub> cases. Mature EC<sub>B57+</sub> NK cells (9 of 10 tested) are predominantly iKIR<sup>-</sup>, whereas most mature EC<sub>B57-</sub> NK cells are iKIR<sup>+</sup> (Fig. 5aII, bI). Therefore, these EC<sub>B57+</sub> NK cells have the functional capacity to lyse infected CD4<sup>+</sup>T cells, releasing circulating virions as early as the beginning of the immune response. It is notable that one EC<sub>B57-</sub> (EC13) behaves as an EC<sub>B57+</sub>, but the mechanism is not defined (Table 1). Interestingly, in EC<sub>B57-</sub>, we find that in mature NK cells, the expression of NKG2C counterbalances the inhibitory iKIR signals (Fig. 5bIII) and allows these NK cells to kill infected CD4<sup>+</sup>T cells expressing HIV peptides in an HLA-E presentation, thus reducing the viral load in EC<sub>B57-</sub>.

The percentage of circulating CD8<sup>+</sup>CM cells is relatively high in EC<sub>B57+</sub> (identical to the HD median: 10 vs 10%) and reduced in EC<sub>B57-</sub>, although higher than in non-ECs (median: 6 vs 4%; Table 1) (Fig. 5bIV and Supplementary Fig. 2cV). Consequently, the frequency of CTLs derived from the differentiation of CD8<sup>+</sup>CM cells is lower in EC<sub>B57-</sub> compared with EC<sub>B57+</sub> cases. The result is a higher frequency of CTLs than CD8<sup>+</sup>supps in EC<sub>B57+</sub> (Fig. 5bV and Supplementary Fig. 5a). In contrast, EC<sub>B57-</sub> cases have a higher percentage of CD8<sup>+</sup>supp cells (Fig. 5aII and Supplementary Fig. 5b) expressing less PD1 (Fig. 5bVI), and EC<sub>B57-</sub> (EC13) behaves again as an EC<sub>B57+</sub>. Notably, both subsets are functionally effective only during the adaptive immune response and not relevant in the critical earliest days of infection.

Each EC phenotypic profile is distinct despite few detected immune cell alterations (Fig. 5c). The majority of these phenotypic alterations, like those in non-ECs, correspond to the direct (HLA-DR, CD38) or indirect (absence of CD26, CD25) effects of IFN $\alpha$  seen in T cell cultures (Supplementary Table 3 and Supplementary Fig. 4). These few but irreversible alterations might occur during the early period of HIV infection in the innate phase of the immune response. They may be augmented by HIV cytopathic effects



**Fig. 5 | Distinct immune cell phenotypic patterns between non-B57 and B57 ECs with an individual profile displayed by each patient in these subgroups.**

**a** Comparative analysis of NK cells, CD4<sup>+</sup> and CD8<sup>+</sup> T-cell subset distribution in non-B57 and B57 ECs. **aI** PCA of studied non-B57 (EC<sub>B57-</sub>) and B57 (EC<sub>B57+</sub>) ECs based on the proportion of CD4<sup>+</sup>, CD8<sup>+</sup> T cells, NK cells, and their subpopulations, evaluated by flow cytometry. Each point represents one participant, color-coded by group: EC<sub>B57-</sub> (blue), EC<sub>B57+</sub> (green). **aII** Heatmaps show the distribution of the indicated lymphocyte subsets in ECs. **b** Differential expression of checkpoint

molecules on mature NK cells and different subsets of CD8<sup>+</sup> T cells. Histograms show the frequency and index ratio of indicated subsets in mature NK (**bI–III**) and CD8<sup>+</sup> T cell compartments (**bIV–VI**). **c** Heatmaps of the frequency of indicated markers in CD4<sup>+</sup> Treg, CD4<sup>+</sup> CM, CD8<sup>+</sup> CM, CD8<sup>+</sup> CTL, CD8<sup>+</sup> supp, and mature NK cells. Warmer colors indicate higher values and colder colors indicate lower values. Comparisons between the two groups were performed with the Mann–Whitney *U*-test. \**p* < 0.05, \*\**p* < 0.01, \*\*\**p* < 0.001, \*\*\*\**p* < 0.0001; ns not significant.

on thymic stromal cells, which occur during early infection in the innate phase of the immune response, and as reported, also are induced by IFN $\alpha$ <sup>39</sup>.

### Discussion

We conclude that besides circulating HIV, the key mediator of AIDS development is elevated circulating IFN $\alpha$ . The main criteria for establishing

a central major mediator of pathogenesis are that it should be active in the earliest days of infection (i.e., in the innate immune phase), be elevated and circulating, and have broad pathogenic effects. The findings show that IFN $\alpha$  meets these criteria. In non-ECs, it circulates at elevated levels, inducing immune cell type abnormalities linked to poor immune cell function (Figs. 1–5 and Table 1). Correspondingly, in ECs, an absence of high



circulating levels of IFN $\alpha$  is associated with minimal immune cell type anomalies. Based on documented experimental data, we propose that ECs avoid the pathogenic vicious cycle of high HIV  $\rightarrow$  high IFN $\alpha$   $\rightarrow$  more HIV  $\rightarrow$  pathogenic IFN $\alpha$ . We draw this inference based on four key findings, elaborated below.

First, at infection onset, NK cells play a critical role in ECs but not in non-ECs. These cells lyse target cells before the viral setpoint and thus are likely the most effective immune factor reducing viral load and correlated IFN $\alpha$  levels at onset. The differences between NK cells from ECs and non-ECs (Supplementary Fig. 6) lie in their functional capacity. Non-EC NK cells expressing multiple inhibitory receptors, including iKIR and checkpoint receptors such as PD1, are likely not functional (Fig. 2bIII, IV and Table 1). Moreover, the low expression of iKIR in NK cells from EC<sub>B57+</sub> enables these unaltered cells to lyse infected CD4<sup>+</sup>T cells expressing HLA<sub>B57</sub>-restricted HIV epitopes, whereas EC<sub>B57-</sub> NK cells expressing iKIR (Fig. 5bI, II) compensate for this inhibitory signal by expressing the activating NKG2C receptor (Fig. 5bIII), enabling lysis of HLA-E-restricted infected CD4<sup>+</sup>T cells.

The second key finding is that IFN $\alpha$ -induced impairment of IL-7-induced immune cell homeostasis in non-ECs results in the reduction of NK, CCR7<sup>+</sup>CD4<sup>+</sup>, and CD8<sup>+</sup>T cells. As a consequence, populations of helper and cytotoxic T cells decline during the later adaptive immune response. The third finding is that the hampered IFN $\alpha$ -induced initiation of the adaptive immune response in non-ECs results in diminished CD4<sup>+</sup>T cell activation and proliferation (Supplementary Table 3 and Supplementary Fig. 4). Finally, in non-ECs, inhibition of CTL and CD8<sup>+</sup>supp cell function linked to IFN $\alpha$ -induced inhibitory checkpoints results in loss of control of viral replication (Fig. 4 and Supplementary Table 3).

The consortium of collaborators working on the ECs has postulated a possible immune mechanism enabling control of HIV replication in ECs<sup>2</sup> (Fig. 5). In keeping with this concept, we find that in addition to evidence supporting our hypothesis of a putative lower infectious inoculum, each EC exhibited one or more distinct immune mechanisms (Table 1) that could contribute to the avoidance of elevated IFN $\alpha$  levels. These mechanisms include early lysis of infected CD4<sup>+</sup>T cells by phenotypically unaltered NK cells and during the adaptive immune response by cytotoxic CTL and CD8<sup>+</sup>supp cells. These data prompted us to consider that EC status does not depend solely on one specific genetic or immune cell profile but also on a distinct immune capacity that is peculiar to each EC case and likely additional circumstantial factors, such as a low inoculum size. There is no doubt that early contributing factors for NK lysis include HLA presentation of HIV peptides by infected cells, including the known HLA<sub>B57+</sub> and HLA-E, following the adaptive immune response for CTL or CD8<sup>+</sup>supp T cells. It also is clear that the HLA<sub>B57</sub> genotype is insufficient to account for EC status, as not all ECs are HLA<sub>B57+</sub> and HLA<sub>B57+</sub> is present in up to 11% of patients with progressive disease, similar to what is seen in the uninfected white population<sup>4</sup>. In keeping with Altfeld et al.<sup>40</sup>, we suggest that HIV evasion of the cytotoxic NK cell-mediated immune response is far more deleterious for early control of viral replication than are CTL and CD8<sup>+</sup>supp cells, which are effective only during the adaptive immune response. Considering that ECs do not exhibit many immune mechanisms in non-ECs related to elevated IFN $\alpha$  caused by HIV disruption (Table 1), we propose that a fortuitous low infectious inoculum is an important contributor to EC status. This hypothesis involves several associated predictions now under analysis.

With a comprehensive characterization of the pathogenic levels of IFN $\alpha$  during both the anti-HIV innate and adaptive immune reactions, we identify elevated IFN $\alpha$  as the key mediator of HIV inhibition of immune cell attack in non-ECs and show how ECs naturally block HIV replication by avoiding elevated IFN $\alpha$ . These findings suggest that reducing IFN $\alpha$  production by any acceptable and efficient means could convert non-ECs to ECs. This proposal is further supported by work carried out in HIV-infected humanized mice showing that anti-IFN $\alpha$  treatment reduces HIV proviral DNA by 14-fold in spleen cells and 7-fold in bone marrow cells<sup>32</sup>. In an accompanying manuscript, we describe the mechanism of how an inefficient anti-HIV immune response promotes progressive elevation of IFN $\alpha$ <sup>18</sup>.

## Data availability

Source data for the main figures in the manuscript can be accessed at <https://doi.org/10.6084/m9.figshare.25125377><sup>41</sup>.

Received: 3 May 2023; Accepted: 7 February 2024;

Published online: 19 March 2024

## References

- Deeks, S. G. & Walker, B. D. Human immunodeficiency virus controllers: mechanisms of durable virus control in the absence of antiretroviral therapy. *Immunity* **27**, 406–416 (2007).
- Jiang, C. et al. Distinct viral reservoirs in individuals with spontaneous control of HIV-1. *Nature* **585**, 261–267 (2020).
- Martin, M. P. et al. Innate partnership of HLA-B and KIR3DL1 subtypes against HIV-1. *Nat. Genet.* **39**, 733–740 (2007).
- Migueles, S. A. et al. HLA B\*5701 is highly associated with restriction of virus replication in a subgroup of HIV-infected long term nonprogressors. *Proc. Natl Acad. Sci. USA* **97**, 2709–2714 (2000).
- Zagury, D. et al. Interferon alpha and Tat involvement in the immunosuppression of uninfected T cells and C-C chemokine decline in AIDS. *Proc. Natl Acad. Sci. USA* **95**, 3851–3856 (1998).
- Gringeri, A. et al. A randomized, placebo-controlled, blind anti-AIDS clinical trial: safety and immunogenicity of a specific anti-IFN alpha immunization. *J. Acquir. Immune Defic. Syndr.* **7**, 978–988 (1994).
- Cha, L., de Jong, E., French, M. A. & Fernandez, S. IFN- $\alpha$  exerts opposing effects on activation-induced and IL-7-induced proliferation of T cells that may impair homeostatic maintenance of CD4<sup>+</sup> T cell numbers in treated HIV infection. *J. Immunol.* **193**, 2178–2186 (2014).
- Dondi, E., Rogge, L., Lutfalla, G., Uzé, G. & Pellegrini, S. Down-modulation of responses to type I IFN upon T cell activation. *J. Immunol.* **170**, 749–756 (2003).
- Aman, M. et al. Interferon-alpha stimulates production of interleukin-10 in activated CD4<sup>+</sup> T cells and monocytes. *Blood* **87**, 4731–4736 (1996).
- Le Buanec, H. et al. IFN- and CD46 stimulation are associated with active lupus and skew natural T regulatory cell differentiation to type 1 regulatory T (Tr1) cells. *Proc. Natl Acad. Sci. USA* **108**, 18995–19000 (2011).
- Friedman, R. L., Manly, S. P., McMahon, M., Kerr, I. M. & Stark, G. R. Transcriptional and posttranscriptional regulation of interferon-induced gene expression in human cells. *Cell* **38**, 745–755 (1984).
- Lazear, H. M., Schoggins, J. W. & Diamond, M. S. Shared and distinct functions of type I and type III interferons. *Immunity* **50**, 907–923 (2019).
- Reis, G. et al. Early treatment with pegylated interferon lambda for Covid-19. *N. Engl. J. Med.* **388**, 518–528 (2023).
- Le Buanec, H. et al. Early elevated IFN $\alpha$  is a key mediator of HIV pathogenesis. *Comms Med.* <https://doi.org/10.1038/s43856-024-00454-6> (2024).
- Jacquelin, B. et al. Nonpathogenic SIV infection of African green monkeys induces a strong but rapidly controlled type I IFN response. *J. Clin. Invest.* <https://doi.org/10.1172/JCI40093> (2009).
- Harris, L. D. et al. Downregulation of robust acute type I interferon responses distinguishes nonpathogenic Simian immunodeficiency virus (SIV) infection of natural hosts from pathogenic SIV infection of rhesus macaques. *J. Virol.* **84**, 7886–7891 (2010).
- Gringeri, A. et al. Active anti-interferon-alpha immunization: a European-Israeli, randomized, double-blind, placebo-controlled clinical trial in 242 HIV-1-infected patients (the EURIS study). *J. Acquir. Immune Defic. Syndr. Hum. Retrovirol.* **20**, 358–370 (1999).
- Le Buanec, H. et al. IFN $\alpha$ -induces CCR5 in CD4<sup>+</sup> T cells of HIV patients causing pathogenic elevation. *Comm. Med.* <https://doi.org/10.1038/s43856-024-00453-7> (2024).



19. Schiavon, V. et al. Microenvironment tailors nTreg structure and function. *Proc. Natl Acad. Sci. USA* **116**, 6298–6307 (2019).
20. Leceoeur, H., de Oliveira-Pinto, L. M. & Gougeon, M.-L. Multiparametric flow cytometric analysis of biochemical and functional events associated with apoptosis and oncosis using the 7-aminoactinomycin D assay. *J. Immunol. Methods* **265**, 81–96 (2002).
21. Van der Sluis, R. M. et al. Diverse effects of interferon alpha on the establishment and reversal of HIV latency. *PLoS Pathog.* **16**, e1008151 (2020).
22. Wherry, E. J. T cell exhaustion. *Nat. Immunol.* **12**, 492–499 (2011).
23. Du, J. et al. Persistent high percentage of HLA-DR+CD38high CD8+ T cells associated with immune disorder and disease severity of COVID-19. *Front. Immunol.* **12**, 735125 (2021).
24. Huang, Y. et al. Inhibition of the adenosinergic pathway: the indispensable part of oncological therapy in the future. *Purinergic Signal.* **15**, 53–67 (2019).
25. Jiang, H. & Chess, L. The specific regulation of immune responses by CD8+ T cells restricted by the MHC class Ib molecule, Qa-1. *Annu. Rev. Immunol.* **18**, 185–216 (2000).
26. Marijt, K. A., Doorduijn, E. M. & van Hall, T. TEIPP antigens for T cell based immunotherapy of immune-edited HLA class IIow cancers. *Mol. Immunol.* **113**, 43–49 (2019).
27. Joosten, S. A., Sullivan, L. C. & Ottenhoff, T. H. M. Characteristics of HLA-E restricted T cell responses and their role in infectious. *Dis. J. Immunol. Res.* **2016**, 1–11 (2016).
28. Poli, A. et al. CD56<sup>bright</sup> natural killer (NK) cells: an important NK cell subset. *Immunology* **126**, 458–465 (2009).
29. Alter, G. et al. Sequential deregulation of NK cell subset distribution and function starting in acute HIV-1 infection. *Blood* **106**, 3366–3369 (2005).
30. Soumelis, V. et al. Depletion of circulating natural type 1 interferon-producing cells in HIV-infected AIDS patients. *Blood* **98**, 906–912 (2001).
31. Schmidt, B., Ashlock, B. M., Foster, H., Fujimura, S. H. & Levy, J. A. HIV-infected cells are major inducers of plasmacytoid dendritic cell interferon production, maturation, and migration. *Virology* **343**, 256–266 (2005).
32. Cheng, L. et al. Blocking type I interferon signaling enhances T cell recovery and reduces HIV-1 reservoirs. *J. Clin. Invest.* **127**, 269–279 (2016).
33. Sallusto, F., Lenig, D., Förster, R., Lipp, M. & Lanzavecchia, A. Two subsets of memory T lymphocytes with distinct homing potentials and effector functions. *Nature* **401**, 708–712 (1999).
34. Stacey, A. R. et al. Induction of a striking systemic cytokine cascade prior to peak viremia in acute human immunodeficiency virus type 1 infection, in contrast to more modest and delayed responses in acute hepatitis B and C virus infections. *J. Virol.* **83**, 3719–3733 (2009).
35. Schwartz, O., Maréchal, V., Le Gall, S., Lemonnier, F. & Heard, J. M. Endocytosis of major histocompatibility complex class I molecules is induced by the HIV-1 Nef protein. *Nat. Med.* **2**, 338–342 (1996).
36. Sallusto, F., Geginat, J. & Lanzavecchia, A. Central memory and effector memory T cell subsets: function, generation, and maintenance. *Annu. Rev. Immunol.* **22**, 745–763 (2004).
37. Kim, H.-J. et al. CD8<sup>+</sup> T regulatory cells express the Ly49 Class I MHC receptor and are defective in autoimmune prone B6-Yaa mice. *Proc. Natl Acad. Sci. USA* **108**, 2010–2015 (2011).
38. Li, J. et al. KIR+CD8+ T cells suppress pathogenic T cells and are active in autoimmune diseases and COVID-19. *Science* **376**, eabi9591 (2022).
39. Dutrieux, J. et al. Modified interferon- $\alpha$  subtypes production and chemokine networks in the thymus during acute simian immunodeficiency virus infection, impact on thymopoiesis. *AIDS* **28**, 1101–1113 (2014).
40. Altfeld, M. & Goulder, P. ‘Unleashed’ natural killers hinder HIV. *Nat. Genet.* **39**, 708–710 (2007).
41. Le Buanec, H. et al. Early elevated IFN $\alpha$  is a key mediator of HIV pathogenesis. *Comms Med.* <https://doi.org/10.6084/m9.figshare.25125377> (2024).

## Acknowledgements

We thank the study volunteers and medical personnel. We also thank Elissa Miller for skillful administrative and editorial collaboration and Philip Embiricos for financial support sponsorship. M.M.S. was supported by R01AI147870 and IBX002358A.

## Author contributions

R.G., D.Z. and H.L.B. designed the research; H.L.B., V.S., M.M., D.B., A.H.-K. and H.S. conducted the research; H.L.B., V.S., M.M., D.B., A.H.-K., H.S., J.-D.B., A.B., R.G. and D.Z. analysed the data; S.K., M.S., C.F.L. and G.D. provided blood cells and serum samples, clinical data samples from HIV patients, and clinical input; and H.L.B., R.G. and D.Z. wrote the paper. All authors contributed to the review and editing and agreed to the published version of the manuscript.

## Competing interests

The authors declare no competing interests.

## Additional information

**Supplementary information** The online version contains supplementary material available at <https://doi.org/10.1038/s43856-024-00454-6>.

**Correspondence** and requests for materials should be addressed to Robert C. Gallo.

**Peer review information** *Communications Medicine* thanks Barbara Schmidt and Mario Stevenson for their contribution to the peer review of this work. A peer review file is available.

**Reprints and permissions information** is available at <http://www.nature.com/reprints>

**Publisher’s note** Springer Nature remains neutral with regard to jurisdictional claims in published maps and institutional affiliations.

**Open Access** This article is licensed under a Creative Commons Attribution 4.0 International License, which permits use, sharing, adaptation, distribution and reproduction in any medium or format, as long as you give appropriate credit to the original author(s) and the source, provide a link to the Creative Commons licence, and indicate if changes were made. The images or other third party material in this article are included in the article’s Creative Commons licence, unless indicated otherwise in a credit line to the material. If material is not included in the article’s Creative Commons licence and your intended use is not permitted by statutory regulation or exceeds the permitted use, you will need to obtain permission directly from the copyright holder. To view a copy of this licence, visit <http://creativecommons.org/licenses/by/4.0/>.

© The Author(s) 2024