



HAL
open science

Lactate: an alternative pathway for the immunosuppressive properties of mesenchymal stem/stromal cells

Carolina Pradenas, Noymar Luque-Campos, Karina Oyarce, Rafael Contreras-Lopez, Felipe Bustamante-Barrientos, Andrés Bustos, Felipe Galvez-Jiron, María Jesús Araya, Catalina Asencio, Raúl Lagos, et al.

► To cite this version:

Carolina Pradenas, Noymar Luque-Campos, Karina Oyarce, Rafael Contreras-Lopez, Felipe Bustamante-Barrientos, et al.. Lactate: an alternative pathway for the immunosuppressive properties of mesenchymal stem/stromal cells. *Current Stem Cell Research & Therapy*, 2023, 14 (1), pp.335. 10.1186/s13287-023-03549-4 . inserm-04520316

HAL Id: inserm-04520316

<https://inserm.hal.science/inserm-04520316>

Submitted on 25 Mar 2024

HAL is a multi-disciplinary open access archive for the deposit and dissemination of scientific research documents, whether they are published or not. The documents may come from teaching and research institutions in France or abroad, or from public or private research centers.

L'archive ouverte pluridisciplinaire **HAL**, est destinée au dépôt et à la diffusion de documents scientifiques de niveau recherche, publiés ou non, émanant des établissements d'enseignement et de recherche français ou étrangers, des laboratoires publics ou privés.



Distributed under a Creative Commons Attribution 4.0 International License

RESEARCH

Open Access



Lactate: an alternative pathway for the immunosuppressive properties of mesenchymal stem/stromal cells

Carolina Pradenas^{1,2†}, Noymar Luque-Campos^{2,3†}, Karina Oyarce^{4†}, Rafael Contreras-Lopez⁵, Felipe A. Bustamante-Barrientos^{2,3}, Andrés Bustos¹, Felipe Galvez-Jiron², María Jesús Araya^{2,3}, Catalina Asencio^{2,3,6}, Raúl Lagos¹, Yeimi Herrera-Luna^{2,3}, Daouda Abba Moussa⁵, Charlotte Nicole Hill^{2,6}, Eliana Lara-Barba^{2,3}, Claudia Altamirano^{3,7}, Alexander Ortloff⁸, Yessia Hidalgo-Fadic³, Ana María Vega-Letter^{2,7}, María de los Ángeles García-Robles¹, Farida Djouad^{5,9*}, Patricia Luz-Crawford^{2,3*} and Roberto Elizondo-Vega^{1*}

Abstract

Background The metabolic reprogramming of mesenchymal stem/stromal cells (MSC) favoring glycolysis has recently emerged as a new approach to improve their immunotherapeutic abilities. This strategy is associated with greater lactate release, and interestingly, recent studies have proposed lactate as a functional suppressive molecule, changing the old paradigm of lactate as a waste product. Therefore, we evaluated the role of lactate as an alternative mediator of MSC immunosuppressive properties and its contribution to the enhanced immunoregulatory activity of glycolytic MSCs.

Materials and methods Murine CD4⁺ T cells from C57BL/6 male mice were differentiated into proinflammatory Th1 or Th17 cells and cultured with either L-lactate, MSCs pretreated or not with the glycolytic inductor, oligomycin, and MSCs pretreated or not with a chemical inhibitor of lactate dehydrogenase A (LDHA), galloflavin or LDH siRNA to prevent lactate production. Additionally, we validated our results using human umbilical cord-derived MSCs (UC-MSCs) in a murine model of delayed type 1 hypersensitivity (DTH).

Results Our results showed that 50 mM of exogenous L-lactate inhibited the proliferation rate and phenotype of CD4⁺ T cell-derived Th1 or Th17 by 40% and 60%, respectively. Moreover, the suppressive activity of both glycolytic and basal MSCs was impaired when LDH activity was reduced. Likewise, in the DTH inflammation model, lactate production was required for MSC anti-inflammatory activity. This lactate dependent-immunosuppressive mechanism was confirmed in UC-MSCs through the inhibition of LDH, which significantly decreased their capacity to control proliferation of activated CD4⁺ and CD8⁺ human T cells by 30%.

[†]Carolina Pradenas, Noymar Luque-Campos and Karina Oyarce have contributed equally to this work.

*Correspondence:

Farida Djouad
farida.djouad@inserm.fr
Patricia Luz-Crawford
pluz@uandes.cl
Roberto Elizondo-Vega
relizondo@udec.cl

Full list of author information is available at the end of the article



© The Author(s) 2023. **Open Access** This article is licensed under a Creative Commons Attribution 4.0 International License, which permits use, sharing, adaptation, distribution and reproduction in any medium or format, as long as you give appropriate credit to the original author(s) and the source, provide a link to the Creative Commons licence, and indicate if changes were made. The images or other third party material in this article are included in the article's Creative Commons licence, unless indicated otherwise in a credit line to the material. If material is not included in the article's Creative Commons licence and your intended use is not permitted by statutory regulation or exceeds the permitted use, you will need to obtain permission directly from the copyright holder. To view a copy of this licence, visit <http://creativecommons.org/licenses/by/4.0/>. The Creative Commons Public Domain Dedication waiver (<http://creativecommons.org/publicdomain/zero/1.0/>) applies to the data made available in this article, unless otherwise stated in a credit line to the data.

Conclusion These findings identify a new MSC immunosuppressive pathway that is independent of the classical suppressive mechanism and demonstrated that the enhanced suppressive and therapeutic abilities of glycolytic MSCs depend at least in part on lactate production.

Keywords Mesenchymal stem/stromal cells, Glycolytic metabolism, Lactate dehydrogenase, lactate, Immunosuppression, Th1 and Th17 cells

Background

Mesenchymal stem/stromal cells (MSCs) are immunosuppressive cells widely proposed as therapeutic agents for autoimmune-mediated diseases although inconsistent results between preclinical and clinical studies have been reported [1–4]. To improve the therapeutic properties of MSCs, activation with proinflammatory cytokines, such as tumor necrosis factor alpha (TNF α) and interferon-gamma (IFN γ), has been suggested [5, 6]. We have recently described that this activation significantly increases their lactate release [7]. This effect can be replicated by driving MSCs toward glycolysis using oligomycin (an inhibitor of the ATP synthase), which significantly increased MSC immunosuppressive activity on proinflammatory CD4⁺ T cells, specifically T-helper 1 and 17 (Th1 and Th17, respectively) cells while restricting inflammation in a delayed type hypersensitivity 1 (DTH) murine model [7].

Although the mechanism by which glycolytic MSCs display enhanced suppressive activity has not been elucidated, the glycolytic switch of MSCs did not alter the production of canonical suppression mediators, such as interleukin 6 (IL-6), programmed cell death ligand 1 (PD-L1), or nitric oxide (NO) [7]. However, it was associated with a significant increase in lactate release. Recently, several studies have shown that lactate acts as an immunosuppressive molecule, changing the old paradigm of lactate as a secondary metabolite waste product [8]. In mammals, the lactate produced is predominantly L-lactate in a reaction catalyzed by lactate dehydrogenase A (LDHA) [9, 10], and it can be released through members of the monocarboxylates transporters (MCT) family [11–13]. Upon its release, lactate can be taken up by other cells and used as a fuel source or display several functions, including the suppression of effector T cells [14–16]. Among the 14 known MCTs, only MCT 1–4 have been identified as lactate transporters, which are stereoselective for the transport of L-lactate [11, 17]. In addition, L-lactate can function as a signaling molecule by binding to the specific G protein-coupled hydroxycarboxylic acid receptor 1 (HCAR1) [18, 19].

The immunosuppressive effect of L-Lactate has been reported in different immune cell types including dendritic cells (DCs), natural killer (NK) cells, CD4⁺ and CD8⁺ T cells, monocytes, and macrophages [20–24].

Moreover, lactate derived from the umbilical cord-derived MSCs (UC-MSCs) promotes the differentiation and maturation of monocyte-derived DCs into M2-macrophages, suggesting that lactate might act as an immunomodulatory factor in MSCs [25]. However, no study has evaluated the role of lactate on MSC immunoregulatory properties on activated proinflammatory CD4⁺ T cells either in vitro or in vivo.

Therefore, in the present study, we evaluated the role of L-Lactate production by MSCs on their immunosuppressive activity using murine and human activated T cells and their potential role on the enhanced suppressive activity of glycolytic MSCs in vitro and in vivo in an inflammatory murine model of DTH.

Methods

Ethics statement

All experiments involving animals were conducted according to the ethical policies and procedures approved by the Ethics committee of the Faculty of Science, Universidad de Concepción, Chile (Approval CEBB-532-2019) and from the Ethics Committee of the School of Medicine at the Universidad de Los Andes in Santiago, Chile (Approval CEC 2016309). All healthy donors sign the consent forms approved by the School of Medicine at the Universidad de Los Andes in Santiago, Chile (Approval CEC 2016309). For the DTH murine model, Sixty-three adult C57BL/6 mice were supplied by the C4C animal facility. Mice were housed in a separate animal room with controlled temperature (21 \pm 2 $^{\circ}$ C) and light cycle (12 h light/12 h dark). Animals were fed ad libitum with a standard rodent diet (Lab Diet, 5P00 RMH 3000, Purina Mills, St. Louis, MO) and had free access to tap water. All mice were kept within their same enriched conditions during housing. At the end of the experimental protocols, mice were euthanized by cervical dislocation under isoflurane anesthesia. Our manuscript is reported following the ARRIVE guidelines.

MSC isolation and culture

Murine and human MSCs were isolated from either the bone marrow of C57BL/6 mice (MSC) or the human umbilical cord (UC-MSC) of newborns and characterized as previously reported [26–28]. When indicated,

murine MSCs or UC-MSCs were stimulated with 1 $\mu\text{g}/\text{mL}$ of oligomycin (OLN; Calbiochem, Merck, Darmstadt, Germany) for 24 h (MSC_{OLN}). LDHA activity was inhibited with 50 μM galloflavin (Cayman Chemical, Ann Arbor, Michigan, USA) for 24 h (MSC_{GF} or $\text{MSC}_{\text{OLN+GF}}$) or with 50 pmol LDHA-siRNA (Ambion Inc., Austin, Texas, USA) for 4 h ($\text{MSC}_{\text{siLDHA}}$ or $\text{MSC}_{\text{OLN+siLDHA}}$ or UC- $\text{MSC}_{\text{siLDHA}}$) with the Fugene transfection reagent (Promega, Madison, Wisconsin, USA) following the manufacturer's instructions. The validation of LDHA inhibition was performed by qPCR, lactate production measurement and by western blot analysis.

Th1 and Th17 differentiation and immunosuppressive assay

Naïve CD4^+ T cells were obtained using the MojoSort Mouse CD4 T Cell Isolation Kit (Biolegend, San Diego, California, USA) following the manufacturer's instructions. Naïve CD4^+ T cells were then stained with cell trace violet (CTV) (Life-Technology, Thermo Fisher, Carlsbad, California, USA) and cultured in a specific lymphocyte medium (MLR) in the presence of specific culture conditions to induce Th1 or Th17 cells as we previously described [28]. To test the immunosuppressive effect of lactate release by MSCs, naïve CD4^+ T cells prompted to differentiate into Th1 or Th17 were cultured alone or with 10, 25, or 50 mM L-Lactate or in the presence of MSCs under the different experimental conditions described above at a cell ratio of one MSCs per 12.5 lymphocytes in MLR medium. After 72 h, CD4^+ T cell proliferation and differentiation were analyzed by flow cytometry.

Flow cytometry analysis

Murine CD4^+ T cells were stimulated for 4 h at 37 °C with 50 ng/mL of phorbol myristate acetate (PMA) (Merck, Darmstadt, Germany), 1 mg/mL of ionomycin (Merck, Darmstadt, Germany) and 10 mg/mL of brefeldin A (Sigma-Aldrich, Merck, Darmstadt, Germany) in MLR medium as described [28]. Then, CD4^+ T cells were stained with anti- CD25 antibodies (BD Pharmingen, San Diego, California, USA) in the presence of the LIVE/DEAD Fixable near-IR stain (Invitrogen, Thermo Fisher, Carlsbad, California, USA) and fixed with the FOXP3 Cytotfix/Cytoperm buffer (eBioscience, San Diego, California, USA). Finally, the cells were labeled with intracellular fluorochrome-conjugated antibodies against IFN γ , IL17 (BD Pharmingen, USA) and FOXP3 (eBioscience, San Diego, California, USA), as previously described [7]. Flow cytometry was conducted using the BD FACS Canto II (BD Biosciences, San Diego, California, USA),

and the data were analyzed with the FlowJo software (BD Biosciences, San Diego, California, USA).

Measurement of MSC lactate production

MSCs were cultured in supplemented Dulbecco's Modified Eagle Medium (DMEM) without phenol red and fetal bovine serum (FBS) to assess inhibition of lactate production in MSCs after treatments. After 24 h, the supernatant was collected, and concentration of L-Lactate was measured with the Colorimetric Lactate Assay Kit (BioVision, Abcam, UK) according to the manufacturer's instructions. Briefly, a standard curve was prepared with 0, 2, 4, 6, 8 and 10 nmol/well of lactate standard in a 96-well plate. Then, 1 μL of each sample and the standard curve wells were incubated for 30 min at room temperature and protected from light in a 50 μL reaction volume containing 1 μL of Lactate Enzyme Mix, 1 μL of probe, and Lactate Assay Buffer. Finally, absorbance was measured (OD, 570 nm), and lactate concentration was determined by plotting and replacing the lactate standard curve.

Seahorse assay

The metabolism of murine MSC was determined in real time by measuring the Oxygen Consumption Rate (OCR) and the Extracellular Acidification Rate (ECAR), using the XF96 analyzer (Seahorse Biosciences, North Billerica, Massachusetts, USA) as previously described [7].

MCT and HCAR1 expression by quantitative real-time PCR (qRT-PCR)

RNA of Th1, Th17, and naïve CD4^+ T cells were extracted using TRIzol Reagent (Invitrogen, Thermo Fisher, Carlsbad, California, USA) and then treated with DNAase I (Invitrogen, Thermo Fisher, Carlsbad, California, USA) to remove genomic DNA contamination. The purity and quantification of total RNA was measured with a NanoDrop 2000 (Thermo Scientific). Reverse transcription was performed with iScriptTM cDNA Synthesis Kit (Bio-Rad, Los Angeles, California, USA) according to the manufacturer's instructions. For qRT-PCR, 2 μL of HOT FIREPol[®] EvaGreen[®] qPCR Mix Plus (ROX) (Solis Bio-dyne, Tartu, Estonia) was used in a final volume of 10 μL containing 2 μL of cDNA diluted 1:1, 1 μM of the following sets of primers: 18S, sense 5'-GCCCGAAGCGTT TACTTTGA-3' and antisense 5'-TTGCGCCGGTCC AAGAATTT-3'; MCT1, sense 5'-TGCAACGACCAG TGAAGTATC-3' and antisense 5'-CAAGCCCAAGAC CTCCAATAA-3'; MCT2, sense 5'- ATATTCAACACC ACCTCCAGTC-3' and antisense 5'-TGAAGCCAA CGGTGAGATAAA-3'; MCT4, sense 5'- ATGAGTTTG

GGATTGGCTACA-3' and antisense 5'-GTGGTGAGG TAGATCTGGATAATG-3'; HCAR1, sense 5'-ATCCTG GTCTTCGTGCTTGG-3' and antisense 5'-CTGTCC GAAGGGGTAAGCAG-3'. The reaction was carried out in an Mx3000P QPCR System (Agilent Technologies, USA). The relative amount of mRNA of each gene was calculated with the relative quantification method ($2^{-\Delta\Delta Ct}$) and normalized according to the expression of naive CD4⁺ T cells in basal conditions.

DTH mouse model

A DTH murine model was used to evaluate the effect of lactate inhibition in MSCs on their anti-inflammatory capacity. For that purpose, 1 mg/mL of albumin from chicken egg white (OVA) (Sigma-Aldrich, Merck, Darmstadt, Germany) in Complete Freund's Adjuvant were intradermic injected into the lower back of C57BL/6 mice. After 5 days, paw swelling was measured and a boost of OVA in saline solution (control group) or in combination with MSCs under the different experimental conditions were injected in the hindlimb paws. After 24 h, paw thickness was measured again, and euthanasia was performed. Subpopulations of anti- or proinflammatory CD4⁺ T cells in the draining lymph nodes were determined by flow cytometry using a FACS CANTO II flow cytometer.

Apoptosis assay

Freshly isolated naive murine CD4⁺ T cells or human peripheral blood mononuclear cells (PBMCs) were cultured in the presence or absence of 10 mM, 20 mM or 50 mM L-Lactate for 3 days. Apoptosis was measured using Anexinn V (Invitrogen, Thermo Fisher, Carlsbad, California, USA) and propidium iodide (PI) kits (eBioscience, San Diego, California, USA), following manufacturer's instructions, and flow cytometry using a FACS CANTO II flow cytometer.

UC-MSCs/PBMC co-cultures

PBMCs from healthy donors (HD) were labeled with CellTrace™ Violet (Life Technologies, Thermo Fisher, Carlsbad, California, USA) and co-cultured with UC-MSCs under the different mentioned conditions in the presence of phytohemagglutinin (PHA) (5 µg/mL) (Sigma-Aldrich, Merck, Darmstadt, Germany) in MLR media. The proliferation was evaluated by FACS using a FACS CANTO II flow cytometer.

Statistical analysis

Data are shown as the mean ± SD. All in vitro experiments were performed at least three times independently using two different biological samples each time. For the DTH murine model, twelve to eighteen mice

per experimental group were used. The experiment was repeated three times as follows: 1st DTH experiment consisting in six animals per experimental group, including the non-treated mice induced with the DTH model, treated with murine MSCs and with murine MSCs pretreated with galloflavin. The second DTH murine model had seven animals per experimental group in the non-treated mice induced with the DTH model, treated with murine MSCs, with murine MSCs pretreated with galloflavin and murine MSCs pretreated with a siRNA against LDH. Finally, the third experiment included six animals in the non-treated DTH mice, five animals treated with murine MSCs, and eight animals treated with murine MSCs pretreated with a siRNA against LDH. Data that were identified as outliers were excluded. Also, 4 popliteal lymph nodes from the in vivo experiments (one non-treated DTH, one treated with murine MSC, one with siRNA against LDH and one with galloflavin) were lost during the experimental processing due to poor lymph nodes cells recovery. The p-values were generated by non-parametric analysis using the Kruskal–Wallis test for multiple comparisons and the Mann–Whitney test to compare two groups for all the data that did not fit with normal Gaussian distribution. Two-ways ANOVA and t tests were used for normal distribution. $p < 0.05$ (*), $p < 0.01$ (**) or $p < 0.001$ (***) were considered statistically significant. Data were analyzed with the GraphPad Prism TM 6 software (GraphPad Software, San Diego, California, USA).

Results

L-Lactate regulates the proliferation and function of Th1 and Th17 lymphocytes

We and others have recently described that MSC glycolytic switching significantly increases their immunosuppressive properties on murine and human derived-T cells [7, 29, 30]. Indeed, the MSCs glycolytic switch involves a substantial increase in lactate production, which could be associated with MSCs immunosuppressive capacities [7]. Therefore, to assess the role of MSCs-derived lactate on their immunomodulatory capacity, we first evaluated the expression of the lactate receptor, HCAR1, and MCTs on the different CD4⁺ T cell subsets and found a significantly higher expression level of MCT1 and MCT4 in Th1 and Th17 cells (Fig. 1A, brown and red bars, respectively) as compared with naive CD4⁺ T cells (Fig. 1A, white bars). Immunofluorescence experiments showed that HCAR1, MCT1, and MCT4 are mainly expressed in the plasma membrane of Th17 cells and to a lesser extent in Th1 cells (Fig. 1B, C), suggesting that both Th1 and Th17 cells might be receptive to lactate stimulation. Next, we studied the proliferation and differentiation

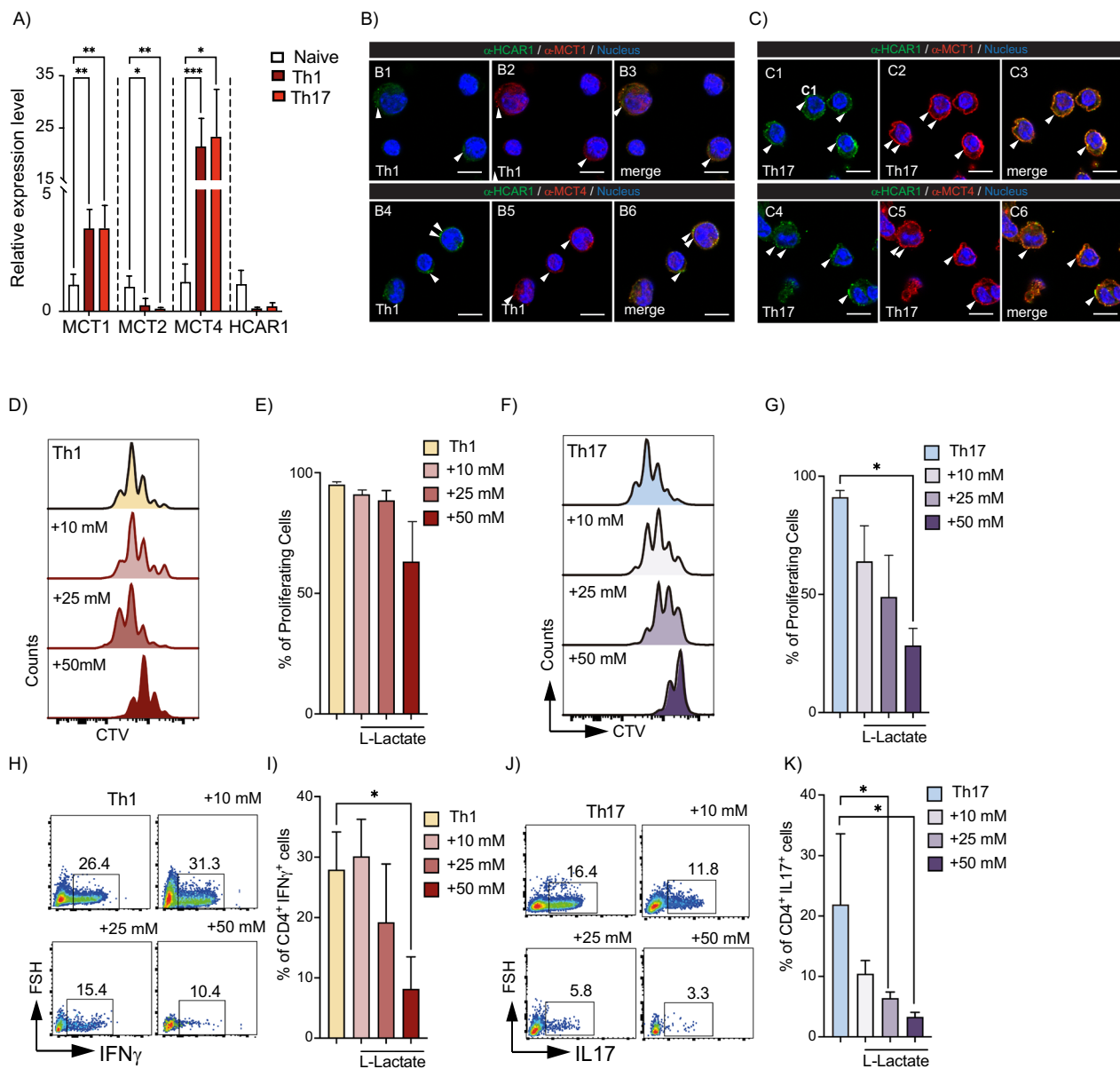


Fig. 1 L-Lactate decreases the proliferation and differentiation of proinflammatory Th1 and Th17 cells. **A–C** Naïve CD4⁺ T cells from C57BL/6 mice were stained with CTV and differentiated into Th1 or Th17 cells. After 3 days of culture, relative expression of lactate receptor (HCAR1) and monocarboxylate transporters (MCTs) were analyzed by qRT-PCR (**A**) and immunofluorescence (**B, C**). Proliferation (**D, G**) and differentiation of naïve CD4⁺ T cells into Th1 (**H, I**) or Th17 (**J, K**) cells cultured alone or in the presence of 10, 25 or 50 mM L-Lactate were measured by flow cytometry analysis. Results represent the mean \pm SD of three independent experiments with four to six biological samples; **p* < 0.05, ***p* < 0.01, ****p* < 0.001 (unpaired Kruskal–Wallis test). Unless otherwise indicated, comparisons were as compared to naïve CD4⁺ T cells for qRT-PCR and immunofluorescence or with non-treated Th1 or Th17 cells

potential of naïve CD4⁺ T cells into Th1 or Th17 cells in the presence of different concentrations of L-Lactate (Fig. 1D–K). Because lactate can be transported through different MCTs (e.g., MCT1 and MCT4), each with individual transport capacities given by their Km (7.7 mM and 34 mM, respectively), we chose a concentration of 10 mM L-Lactate to facilitate transport

through MCT1, 25 mM to promote transport through MCT4, and 50 mM at which point, both transporters will be saturated for their transport capacity. After 3 days, 50 mM lactate induced a slight, but not significant increase in apoptosis (Additional file 1: Fig. S1A–C). At this same concentration, with no observable pH variations (data not shown), a significant decrease in

the proliferation rate of both Th1 and Th17 cells was observed (Fig. 1D–G), as was the differentiation potential of CD4⁺ T cells toward Th1 (Fig. 1H, I) and Th17 cells (Fig. 1J, K). Moreover, as previously described [31], 25 mM L-Lactate significantly induced Treg cells (Additional file 1: Fig. S1D, E). Thus, these results showed that Th1 and Th17 cells express HCAR1, as well as MCT1 and MCT4 and that the exogenous addition of L-lactate significantly impairs the proliferation and differentiation process of both Th1 and Th17 cells.

Lactate production is an essential mediator of MSC immunosuppressive activity

To determine the role of lactate produced by murine MSCs on their immunosuppressive effect, we first inhibited LDHA [32]. Using galloflavin (MSC_{GF}) or a specific siRNA against LDHA (MSC_{siLDHA}) (Additional file 2: Fig. S2A). After 24 h, lactate release decreased by 45% with galloflavin and 60% with siRNA, compared to naïve MSCs (MSC_{CTL}) or MSCs transfected with scramble siRNA (MSC_{siSCR}) (Fig. 2A). To compare the immunosuppressive capacity of these MSCs, we performed co-culture experiments with CD4⁺ T cells induced to differentiate into Th1 or Th17 cells. After 3 days of co-culture, we showed that both MSC_{GF} and MSC_{siLDHA} display a lower immunosuppressive capacity without altering the proliferation and differentiation potential of Th1 cells as compared to control MSCs (Fig. 2B–E). For Th17 cells, we observed a decrease in the suppressive effect of both MSC_{GF} and MSC_{siLDHA} on their proliferation and differentiation, as compared to MSC_{CTL} (Fig. 2F–I). No differences were observed in the generation of anti-inflammatory Treg cells for any of the experimental conditions (data not shown). This effect was not associated with a detectable metabolic switch in MSCs, since neither galloflavin nor the siRNA significantly modified the basal oxygen consumption rate (OCR) or the basal extracellular acidification rate (ECAR) (Additional file 2: Fig. S2B, C). Similarly, when we quantified the expression of the canonical molecules involved in the immunosuppressive properties of MSCs (e.g., VCAM, ICAM, PD-L1 or NO₂, activated or not with IFN γ or TNF α), we only observed changes in the ICAM expression levels in response to LDHA inhibition under basal conditions (Additional file 3: Fig. S3A–M). To validate these results, we used a general pharmacological inhibition of MCT on MSCs using the specific inhibitors of MCT activity, AZD3965 (25 nM) and alpha-cyano-4-hydroxycinnamate (4-CIN, 1 mM) in vitro. Inhibition of lactate transporters in MSCs also impairs the suppressive activity of MSCs on the proliferation and phenotype of both Th1 (Additional file 4:

Fig. S4B, C) and Th17 cells (Additional file 4: Fig. S4D, E), thus supporting the role of lactate as an MSC immunosuppressive mechanism. These results reveal that the immunomodulatory effects of MSCs on Th1 and Th17 cells are partially dependent on lactate production.

Inhibition of lactate production impairs the immunoregulatory properties of MSC in vivo

To establish the role of lactate produced by MSCs on their immunoregulatory potential in vivo, we relied on the DTH murine model (Fig. 3A), which has been extensively reported as a proinflammatory murine model, to study cell-mediated host immune response associated with T-CD4⁺ cells as measured by the localized swelling of the immunized joint [33, 34]. In the present work, we aimed to determine the effect of inhibiting lactate release in MSCs on local inflammation in the DTH model by evaluating localized swelling of the joint where the DTH was induced (paws) and the immune response in the popliteal lymph node, nearby the side of injection (Fig. 3A). Compared to untreated DTH mice, those treated with MSC_{CTL} showed a 50% decrease in the paw swelling (Fig. 3B, black and gray line bars, respectively). In contrast, mice treated with MSC_{GF} or MSC_{siLDHA} did not show any decrease in paw swelling (Fig. 3B, orange and yellow line bars, respectively). In addition, the frequency of Th1 and Th17 cells was significantly lower only in the mice treated with MSC_{CTL} as compared to the untreated DTH mice (Fig. 3C–E, gray and black line bar). This MSC-mediated immunoregulatory effect was completely lost when the lactate production was inhibited (Fig. 3C–E, orange, and yellow line bars). Of note, while no difference in the percentage of Treg cells was observed in the popliteal lymph nodes of mice in the different groups (Fig. 3F, G), a 50% increase in the Treg/Th17 ratio was observed only in the group treated with MSC_{CTL} as compared to non-treated DTH mice (Fig. 3H, gray and black line bar, respectively). To evaluate the peripheral immune response, we quantified the generation of Th1, Th17, and Treg cells in peripheral blood, which showed a significant inhibition of Th1 (Additional file 5: Fig. S5A) and Th17 cells (Additional file 5: Fig. S5B) response when mice were treated with MSCs. This effect was abrogated when MSCs were had genetic or pharmacological inhibition of LDHA. No effect was observed on Treg cells (Additional file 5: Fig. S5C). Therefore, these data showed that lactate released by MSCs is critical for their immunoregulatory potential in a murine inflammatory model.

The enhanced immunosuppressive capacity of glycolytic MSCs depends on their lactate production

We have previously demonstrated that the induction of the MSCs glycolytic switch using the ATP synthase

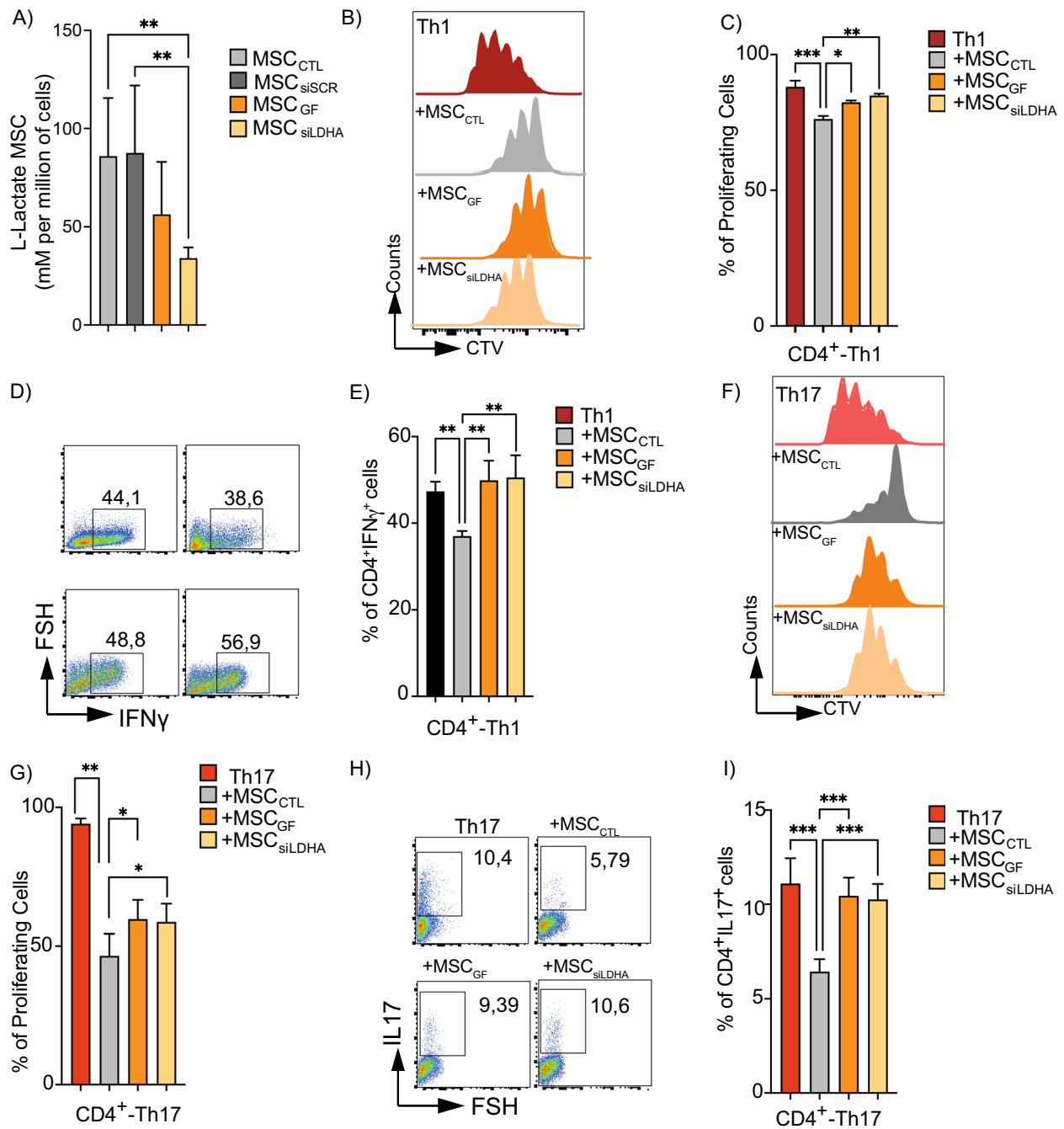


Fig. 2 Lactate inhibition impairs the suppressive activity of murine MSCs on proinflammatory Th1 and Th17 cells. **A** Colorimetric measure of L-Lactate produced by control MSCs (gray bar), MSC_{GF} (orange bar), and MSC_{siLDHA} (yellow bar) after 24 h of treatment. **B–I** Naive CD4⁺ T cells from C57/BL6 mice were marked with CTV and stimulated to differentiate into Th1 (**B–E**) or Th17 (**F–I**) cells and cultured alone (light and dark red, respectively) or with control MSCs (gray bar) or pretreated with galloflavin (orange bar) or LDHA-siRNA (yellow bar) to inhibit lactate production. After 3 days of co-culture, proliferation of Th1 (**B, C**) and Th17 (**F, G**) cells, and IFN γ (**D, E**) or IL-17A (**H, I**) production were evaluated by FACS. Results represent the mean \pm SD of three independent experiments lactate measurement and three independent experiments with at least six different biological samples for CD4⁺ T cells; **p* < 0.05, ***p* < 0.01, ****p* < 0.001 (unpaired Kruskal–Wallis test). Unless otherwise indicated, comparisons were with MSC in basal or control conditions, or with Th1 or Th17 cells

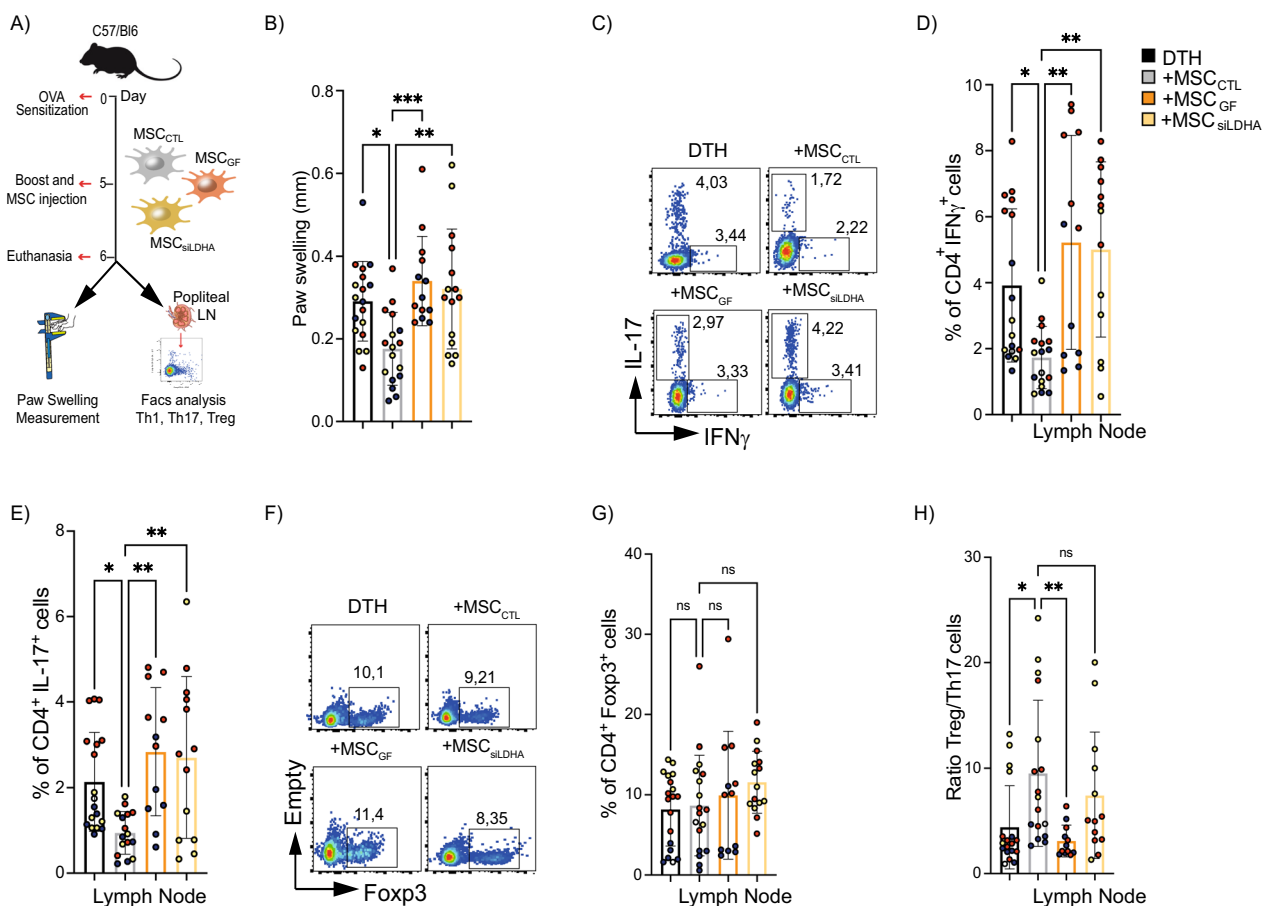


Fig. 3 Inhibition of lactate production in MSCs reduces their immunotherapeutic activity in a murine DTH model. **A** Experimental design of the DTH murine model. **B** After 24 h post-boost and MSCs injection, paw swelling was measured on the hindlimb paws. **C–H** After euthanasia, proinflammatory Th1 (**C, D**) and Th17 (**E, F**) lymphocytes and anti-inflammatory Treg cells (**G, H**) present in the draining lymph nodes of DTH mice (black line bars) or DTH mice treated with MSC_{CTL} (gray line bars), MSC_{GF} (orange line bars) or MSC_{sILDHA} (yellow line bars) were measured by FACS. **G** Treg/Th17 ratio was also calculated. Each color represents an independent DTH experiment (DTH1: in dark blue; DTH2: in red; DTH3 in yellow). Results represent the mean \pm SD of three independent experiments with at least 12 animals per experimental group; * $p < 0.05$, ** $p < 0.01$, *** $p < 0.001$, **** $p < 0.0001$ (Unpaired Anova test). Unless otherwise indicated, comparisons were with untreated DTH mice

inhibitor OLN significantly enhanced their immunosuppressive activity on Th1 and Th17 lymphocytes as compared to MSC_{CTL} [7]. This effect was associated with greater lactate efflux [7]. To assess whether the lactate

produced by glycolytic MSCs is associated with their enhanced immunomodulatory capacity, we either pre-treated murine MSCs with OLN alone (MSC_{OLN}), or in combination with galloflavin (MSC_{OLN+GF}) or transfected

(See figure on next page.)

Fig. 4 Lactate produced by glycolytic MSCs mediates their enhanced immunosuppressive effect. **A** Experimental design using MSCs pretreated or not with oligomycin alone (MSC_{OLN}) or together with galloflavin (MSC_{OLN+GF}) or siRNA against LDHA ($MSC_{OLN+sILDHA}$). **B** Colorimetric analysis of MSC lactate efflux after 24 h of treatment. **C–F** Naive $CD4^+$ T cells isolated from spleen of C57BL/6 mice were labeled with CTV and induced to differentiation into Th1 (**C, D**) or Th17 (**E, F**) cells and were cultured alone (dark and light red bars, respectively) or together with MSC_{CTL} (gray bars), MSC_{OLN} (striped, gray bars), MSC_{OLN+GF} (striped orange bars), or $MSC_{OLN+sILDHA}$ (striped yellow bars). After three days of co-culture, proliferation (**C, E**) and phenotype (**D, F**) of lymphocytes were characterized by flow cytometry. Results represent the mean \pm SD of three independent experiments for lactate measurement in MSCs and three independent experiments with at least four different biological samples for $CD4^+$ T cells; * $p < 0.05$, ** $p < 0.01$, *** $p < 0.001$, **** $p < 0.0001$ (unpaired Kruskal–Wallis test). Unless otherwise indicated, comparisons were with MSCs in basal or control conditions or with Th1 or Th17 cells

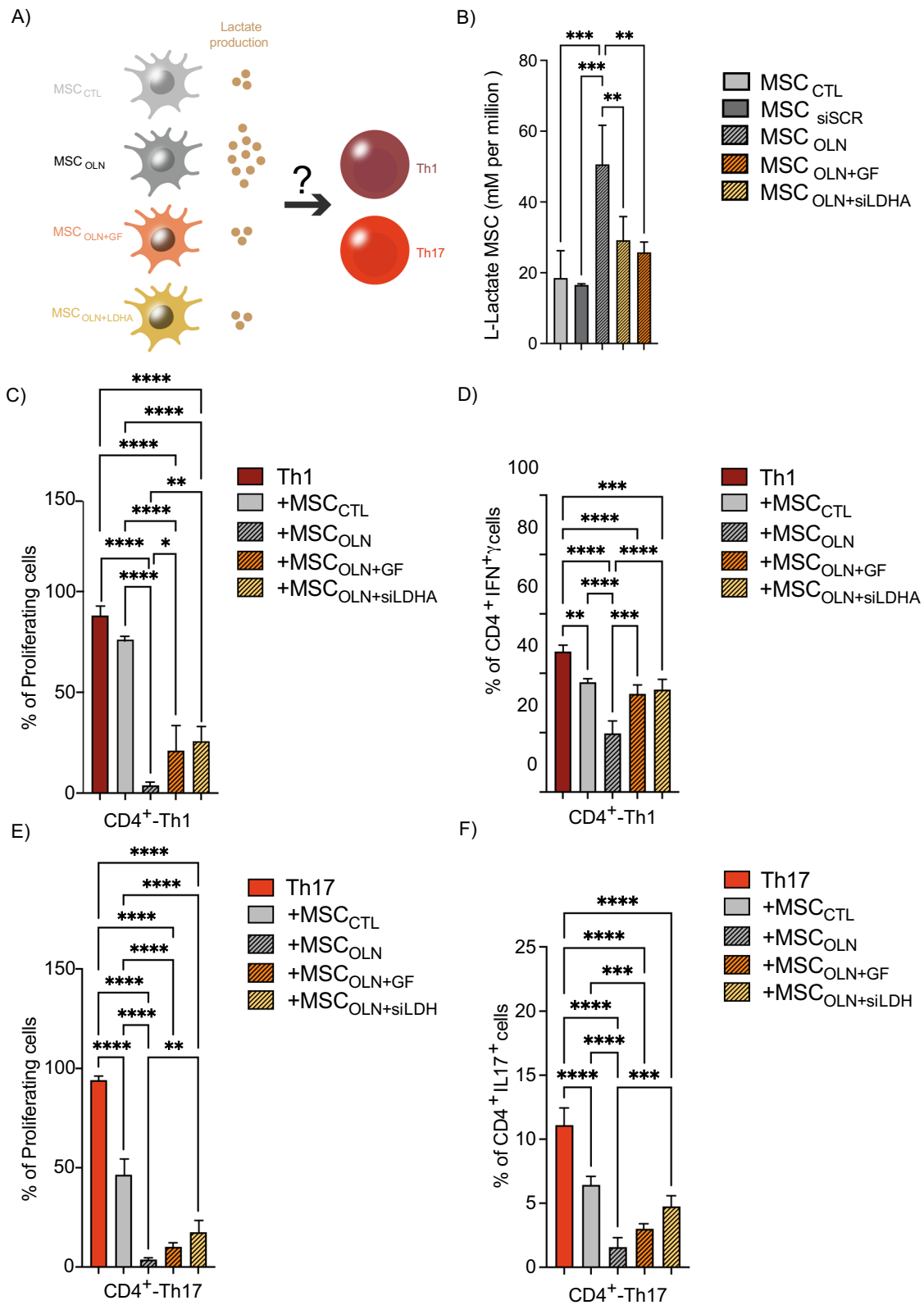


Fig. 4 (See legend on previous page.)

them with a siRNA against LDHA ($MSC_{OLN+siLDHA}$) to decrease their lactate production (Fig. 4A). Our results showed that lactate efflux was increased by 275% in MSC_{OLN} as compared to MSC_{CTL} (Fig. 4A, B). This effect was partially reversed when the cells were treated with LDHA inhibitor (Fig. 4B, striped bar). Inducing freshly isolated $CD4^+$ T cells to differentiate into Th1 or Th17 lymphocytes alone, or in the presence of the different MSC groups showed that MSC_{OLN} elicits a significantly higher immunosuppressive activity on Th1 and Th17 cells than MSC_{CTL} (Fig. 4C–F, striped, gray bar, and gray bar, respectively). However, the enhanced immunosuppressive effect exerted by MSC_{OLN} was significantly reduced when the cells were also treated with LDHA inhibitors (MSC_{OLN+GF} or $MSC_{OLN+siLDHA}$) (Fig. 4C–F). These data showed that the stronger suppressive activity of glycolytic MSCs depends in part on lactate release.

The immunosuppressive effect of human UC-MSCs depends on their lactate efflux

We next assessed the effect of lactate produced by human MSCs on human T cells by first isolating PBMCs and labeling them with CTV prior to their culture with different concentrations of L-Lactate in the presence of PHA to activate T-Cells. FACS analysis revealed that L-Lactate did not significantly induce apoptosis at any of the L-Lactate concentrations analyzed (Additional file 6: Fig. S6A, B) although the proliferation of both $CD4^+$ (Fig. 5A, B) and $CD8^+$ (Fig. 5A, C) T cells was significantly reduced in the presence of 50 mM L-Lactate. Additionally, we compared the immunosuppressive effect of naive UC-MSCs pretreated with OLN alone ($UC-MSC_{OLN}$), to induce a glycolytic metabolism, with MSC knock-down for LDHA and pretreated with OLN ($UC-MSC_{OLN+siLDHA}$) to inhibit the lactate production. $UC-MSC_{OLN}$ had a significantly

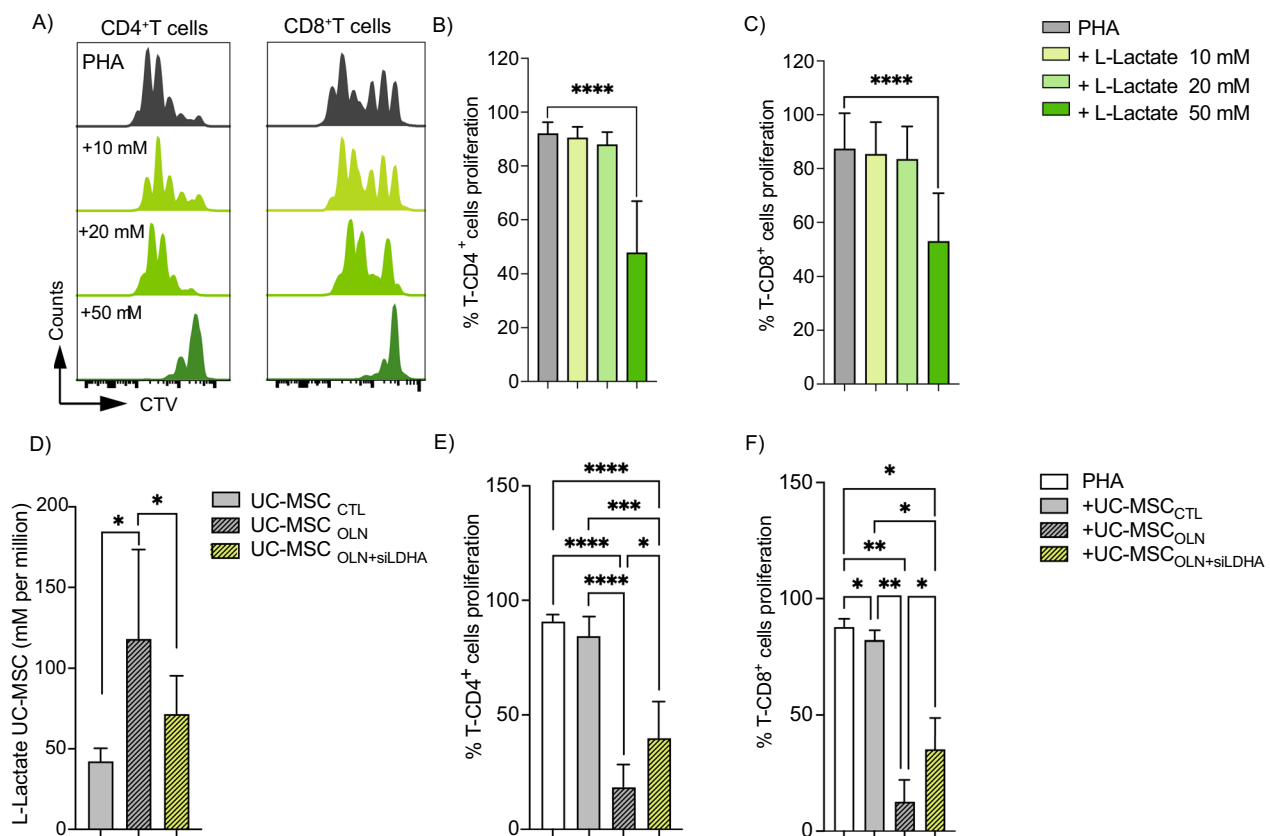


Fig. 5 Lactate produced by UC-MSCs plays a critical role in their suppressive function. **A–C** PBMC were labeled with CTV and cultured alone or with 10, 20 or 50 mM L-lactate. After 4 days of culture, $CD4^+$ (**B**) and $CD8^+$ (**C**) T cells proliferation was analyzed by FACS. **D** Colorimetric analysis of lactate efflux by UC-MSCs after 24 h of treatment. **E, F** PBMCs labeled with CTV were cultivated alone (white bars) or co-culture with $UC-MSC_{CTL}$ (gray bars), $UC-MSC_{OLN}$ (striped, gray bars), or $UC-MSC_{OLN+siLDHA}$ (striped, yellow bars). Proliferation of $CD4^+$ (**E**) and $CD8^+$ (**F**) T cells was assessed by flow cytometry. Results represent the mean \pm SD of three independent experiments for lactate measurement in UC-MSCs and two independent experiments with at least six different biological samples for PBMCs; * $p < 0.05$, ** $p < 0.01$, *** $p < 0.001$, **** $p < 0.0001$ (unpaired Kruskal–Wallis test). Unless otherwise indicated, comparisons were with UC-MSCs in basal or control conditions or activated PBMCs

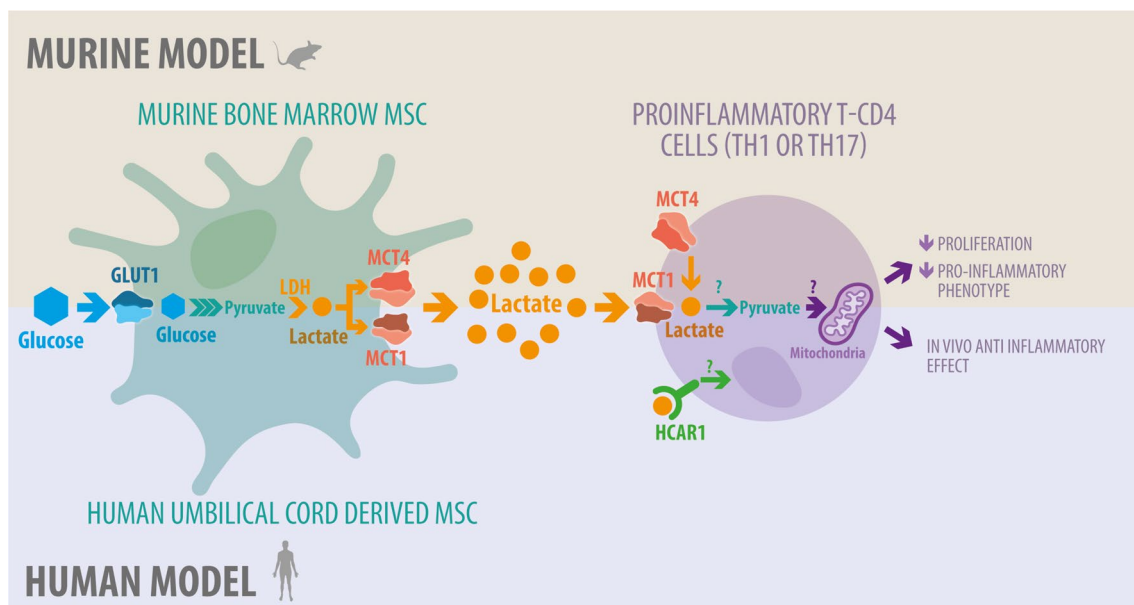


Fig. 6 Graphical abstract. MSCs can exert their suppressive activity on human and murine T cells through an alternative lactate-dependent mechanism that is independent on classical suppressive factors. This suppressive activity improved when MSC are under a glycolytic metabolism due to an increase in lactate release leading to a restrain on in vivo inflammation

higher lactate efflux than naive UC-MSCs (UC-MSC_{CTL}) (Fig. 5D, gray bar and striped, gray bar, respectively) that was correlated with a significantly increased immunosuppressive activity as compared to UC-MSC_{CTL} (gray bars) as shown by decreased proliferation of both CD4⁺ and CD8⁺ T cells (Fig. 5E, F, respectively). However, when LDHA was silenced in UC-MSC_{OLN}, lactate efflux was significantly decreased (Fig. 5D, striped, yellow bar). These results were associated with a decrease in the enhanced suppressive activity in UC-MSC_{OLN} (striped, gray bars) when LDHA expression was inhibited. Indeed, the proliferation rate of both CD4⁺ and CD8⁺ T cells was greater (Fig. 5E, F, respectively; striped, yellow bar), resulting in a significant decrease in immunosuppressive activity. Altogether these data corroborate the critical role of lactate release in the suppressive activity of human- and mouse-derived glycolytic MSCs.

Discussion

In the present work, we evaluated the role of lactate as a new mediator of immunoregulatory activities of both human and mouse MSCs, identifying a novel non-classical immunosuppressive mechanism. Lactate production by human and mouse MSCs was critical for their immunomodulatory functions in vitro, on CD4⁺ T cells, and in vivo, in a murine model of DTH. First, we observed that both Th1 and Th17 cells express MCT1 and MCT4 (although to a greater extent MCT4), two critical MCT that function as proton symporters that are

stereoselective for L-Lactate. MCT1 is the most ubiquitously expressed family member with high affinity for lactate (K_m , 7.7 mM) [11, 35]. Conversely, MCT4, a hypoxia-inducible MCT, has a high capacity for lactate transport (K_m , 34 mM) and is expressed by cells with a high glycolytic metabolism [11, 35]. In addition, lactate serves as a signaling molecule through a G protein-coupled receptor, known as HCAR1 [36], which has been described as a receptor sensitive to L- and D-Lactate stereoisomers [37]. Interestingly, our immunofluorescence studies showed that HCAR1 is also expressed by Th1 and Th17 cells. Consequently, lactate can function as both a paracrine and autocrine signaling molecule, exerting its action on CD4⁺ T cells either in a receptor-dependent manner with several biological consequences or as an extracellular shuttle through MCT1 or MCT4. In this aspect, further studies will be necessary to evaluate the functional role of MCTs and lactate receptors in T cells.

We also observed that high external concentration of L-Lactate (25–50 mM) can dramatically affect Th1 and Th17 cell proliferation and differentiation. This immunosuppressive activity of lactate has been previously reported in a cancer context where tumor-derived lactic acid inhibits the proliferation of human T lymphocytes [38], decreases NK cell activity and induces M2 macrophage polarization [39, 40], suggesting that the production of lactic acid or L-Lactate by tumor cells may facilitate escape from immune surveillance [41]. Although the molecular pathways underlying

lactate-related immunomodulation in autoimmunity and inflammation are still under investigation, there is some evidence that extracellular lactate levels directly affect T cell metabolism and cytokine production [42]. Indeed, Angelin et al. [31] demonstrated that 20 mM L-Lactate suppresses the proliferation of murine effector T cells, independent of acidity and toxicity [31]. Moreover, lactate alone can induce the plasticity of Th17 cells into Treg cells by functioning as a substrate of posttranslational modifications, leading to epigenetic changes in a process called histone lactylation [43, 44]. Through this process, lactate can also directly regulate the transcription of inflammatory genes and modulate the stability of anti-inflammatory transcription factors, such as FOXP3 [43–45]. In line with these results, we have recently demonstrated that the improved immunosuppressive activity of glycolytic MSCs was associated with the secretion of higher lactate levels compared to control MSCs, suggesting that this metabolite could be a potential mediator of the enhanced MSC immunosuppressive activity [7]. We have previously shown that activation of both murine BM-MSCs and human UC-MSCs with proinflammatory cytokines induced glycolysis and lactate production, and murine BM-MSCs release higher lactate levels in comparison to human UC-MSCs [7]. Variations in lactate levels produced could be due to differential expression of key glycolysis molecules, such as GLUTs, hexokinase isoforms, the NAD (+)/NADH redox state [46], as well as differences between tissue-specific MSCs or variations in different donor MSCs [47]. Remarkably, our in vitro and in vivo results showed that pharmacological and genetic inhibition of lactate secretion considerably impaired the immunosuppressive and therapeutic potential of MSCs by affecting Th1 and Th17 cell proliferation and differentiation potential and restraining inflammation in a murine model of DTH, demonstrating the role of lactate on MSC immunoregulatory function. Furthermore, pretreatment of MSCs with OLN together with lactate inhibitors (pharmacological and genetic) also impaired the enhanced immunosuppressive capacity displayed by glycolytic MSCs, validating the critical role of lactate on MSC suppressive function. Similarly, Selleri et al. [25], had previously reported that UC-MSCs abrogates monocyte differentiation into DCs by inducing cells with M2-macrophage features in terms of morphology, surface markers, migratory properties, and antigen presentation capacity [25]. This was partly mediated by lactate produced by UC-MSCs since the pharmacological inhibition of lactate on UC-MSCs partially reverses this effect [25]. Here, we showed that the genetic inhibition of LDHA in glycolytic UC-MSCs mitigated their immunotherapeutic potential in vitro on CD4⁺ and

CD8⁺ human T cells, confirming the critical role of lactate release by human MSCs in their immunosuppressive function.

Conclusion

The results exhibited here propose for the first time a new MSC immunosuppressive pathway that is independent on the classical suppressive mechanism that depends on MSC-derived metabolites from glycolysis, such as lactate (Fig. 6).

Abbreviations

MSC	Mesenchymal stem/stromal cells
UC	Umbilical cord
LDH	Lactate dehydrogenase
CD	Cluster of differentiation
DTH	Delayed type 1 hypersensitivity
MCT	Monocarboxylate transporter

Supplementary Information

The online version contains supplementary material available at <https://doi.org/10.1186/s13287-023-03549-4>.

Additional file 1: Fig. S1. L-Lactate did not induce apoptosis of CD4⁺ T cells. Representative flow cytometry plots using Annexin V/PI staining for apoptosis (A). CD4⁺ T cells were treated for 3 days with different L-Lactate concentrations (10 mM, 20 mM and 50 mM) and then stained with Annexin V/PI for flow cytometric analysis. Percentage of live CD4⁺ T cells after L-lactate incubation (B). Percentage of apoptotic cells after treatment with different L-Lactate concentrations (C). After 3 days of culture with L-Lactate, Treg induction from Th1 (D) and Th17 (E) cells was analyzed by FACS. Results represent the mean ± SD of two independent experiments and four biological samples for CD4⁺ T cells; **p* < 0.05 (unpaired Kruskal–Wallis test). Unless otherwise indicated, comparisons were with control conditions, or with Th1 or Th17 cells.

Additional file 2: Fig. S2. LDH knock-down and lactate inhibition with galloflavin does not change murine MSC metabolic activities. LDH knock-down in murine MSCs by a siRNA against LDH (MSC_{siLDHA}) for 24 h was evaluated by qRT-PCR (A). The effect of the siRNA and galloflavin treatment in MSCs on the protein expression level of LDHA after 24 h was evaluated by Western blot (B). The metabolic profile of control MSCs (black) or incubated with galloflavin (GF, orange) or siRNA against LDH (siLDH, yellow) for 24 h was evaluated by measuring the oxygen consumption rate (OCR) (B) and the extracellular acidification rate (ECAR) (C).

Additional file 3: Fig. S3. Lactate inhibition does not affect the production of classical suppressive factors. The expression of classical suppressive factors VCAM, ICAM, and PD-L1 was evaluated in murine MSCs pretreated or not with galloflavin or an siRNA against LDH by FACS under basal conditions (A–F) or stimulated with the proinflammatory cytokines, TNFα and IFNγ (G–L). Nitric oxide (NO₂) quantification on MSCs pretreated or not with galloflavin or a siRNA against LDH under basal or proinflammatory cytokines conditions (J). Results represent the mean ± SD of three independent experiments for MSCs. **p* < 0.05, ***p* < 0.01, ****p* < 0.001 (unpaired Kruskal–Wallis test). Unless otherwise indicated, comparisons were with MSCs in basal or control conditions.

Additional file 4: Fig. S4. Inhibition of lactate transporter MCT impairs the suppressive activity of murine MSCs in vitro on proinflammatory Th1 and Th17 cells. Naive CD4⁺ T cells from C57BL/6 mice were labeled with CTV and stimulated to differentiate to Th1 (A, B) or Th17 (C, D) cells and were cultured alone (Dark and light red, respectively) or with control MSCs (gray bar) or pretreated to inhibit lactate transporters with AZD3965 (green bar) or 4-CIN (light blue bar). After 3 days of co-culture, proliferation

of Th1 (A) and Th17 (C) cells, and IFN γ (B) or IL-17 (D) production were measured by flow cytometry. Results represent the mean \pm SD of two independent experiments and four biological samples for CD4⁺ T cells; * $p < 0.05$, ** $p < 0.01$, *** $p < 0.001$ (unpaired Kruskal–Wallis test). Unless otherwise indicated, comparisons were with MSC in basal or control conditions, or with Th1 or Th17 cells.

Additional file 5: Fig. S5. Inhibition of lactate production in MSCs reduces their peripheral anti-inflammatory activity in a murine DTH model. After euthanasia, proinflammatory Th1 and Th17 lymphocytes (A, B), anti-inflammatory Treg cells (C) and Treg/Th17 ratio (D) were analyzed in the blood of DTH mice (black line bars) or DTH mice treated with MSC_{CTL} (gray line bars), MSC_{GF} (orange bars), or MSC_{SILDHA} (yellow bars) by FACS. Each color represents an independent DTH experiment (DTH1: in dark blue; DTH2: in red; DTH3 in yellow). Results represent the mean \pm SD of at least five animals per experimental group; * $p < 0.05$, ** $p < 0.01$, *** $p < 0.001$, **** $p < 0.0001$ (Unpaired ANOVA test). Unless otherwise indicated, comparisons were with untreated DTH mice.

Additional file 6: Fig. S6. L-Lactate did not induce apoptosis of human PBMCs. PBMCs were labeled with CTV, treated with different concentrations of L-Lactate (10 mM, 20 mM and 50 mM) in the presence of PHA to activate T cells, and then stained with Annexin V/PI for flow cytometric analysis. Percentage of live PBMCs after L-lactate incubation (A) and percentage of apoptotic cells after treatments with different L-Lactate concentrations (B). Results represent the mean \pm SD of two independent experiments and four biological samples for PBMCs; * $p < 0.05$, ** $p < 0.01$, *** $p < 0.001$ (unpaired Kruskal–Wallis test).

Acknowledgements

The authors would like to thank Javiera Ponce and Joaquin Rojas for the animal facilities, "Centro de Microscopía Avanzada del BioBio" (PIA ECM12) for microscopy imaging support, to Felipe Serrano for graphical designs and Dra. Marjet Heitzer for her English correction on the manuscript.

Author contributions

CP, NLC, REV, FD and PLC designed the project and the experiments with the input of MGR, KO and CA; CP, NLC, RCL, REV, AB, RL, FAB-B, FG, AO, AMV-L, MJA, YH-F, KO, YH-L, CNH, EL-B, DAM, and PLC performed the experiments and analyzed the results. RCL, REV, PLC and FD wrote the manuscript with the input of CA, KO and MGR.

Funding

ANID- Basal funding for Scientific and Technological Center of Excellence, IMPACT, #FB210024. Fondecyt regular 1211353 PLC, and Fondecyt Iniciación 11190690 REV, International Research Project (PRI)-MitoMIR FD and PLC and French National Research Agency (ANR) for the "METAB-OA" project (ANR-20-CE18-0014). The funding body played no role in the design of the study and collection, analysis, and interpretation of data and in writing the manuscript.

Availability of data and materials

The data that support the findings of this study are available in the methods of this article. Further information regarding the experimental design or the results obtained in this article are available on request from the corresponding author.

Declarations

Ethics approval and consent to participate

All experiments involving animals were conducted according to the ethical policies and procedures approved by the ethics committee of the Faculty of Science, Universidad De Concepción, Chile (Approval number CEBB-532-2019; date of approval October 2019) and from the Ethics Committee of the School of Medicine at the Universidad de Los Andes in Santiago, Chile (Approval number CEC 2016309 addendum one; date of approval June 2019). The approved project is entitled "Monocarboxylate transporters and lactate receptor expression and function in proinflammatory lymphocytes plays a fundamental role in mesenchymal stem/stromal cells mediated immunosuppression" (Fondecyt iniciación grant number 11190690, principal investigator

Roberto Elizondo-Vega) and the addendum that correspond to the ethical approval of the PhD thesis project "Study of the role of metabolism on the suppressive effect of umbilical cord-derived mesenchymal stem cells on memory T cells from rheumatoid arthritis patients", related to Noymar Luque-Campos. All healthy donors signed the consent forms approved by the School of Medicine at the Universidad de Los Andes in Santiago, Chile (Approval number CEC 2016309 addendum one; date of approval June 2019).

Consent for publication

Not applicable.

Competing interests

From October 2022 until June 2023, AMV was the scientific advisor of InnovaCell-Chile. The other authors have declared that no competing interest exists.

Author details

¹Laboratorio de Biología Celular, Departamento de Biología Celular, Facultad de Ciencias Biológicas, Universidad de Concepción, Concepción, Chile. ²Centro de Investigación Biomédica, Facultad de Medicina, Universidad de Los Andes, Santiago, Chile. ³IMPACT, Center of Interventional Medicine for Precision and Advanced Cellular Therapy, Santiago, Chile. ⁴Facultad de Medicina y Ciencia, Universidad San Sebastián, Concepción, Chile. ⁵IRMB, University of Montpellier, INSERM, 34295 Montpellier, France. ⁶Millennium Institute of Immunology and Immunotherapy, Santiago, Chile. ⁷Escuela de Ingeniería Bioquímica, Pontificia Universidad Católica de Valparaíso, Valparaíso, Chile. ⁸Departamento de Ciencias Veterinarias y Salud Pública, Facultad de Recursos Naturales, Universidad Católica de Temuco, Temuco, Chile. ⁹Clinical Immunology and Osteoarticular Disease Therapeutic Unit, Department of Rheumatology, CHU Montpellier, 34095 Montpellier, France.

Received: 12 June 2023 Accepted: 27 October 2023

Published online: 19 November 2023

References

- Djouad F, Charbonnier LM, Bouffi C, Louis-Pence P, Bony C, Apparailly F, et al. Mesenchymal stem cells inhibit the differentiation of dendritic cells through an interleukin-6-dependent mechanism. *Stem Cells*. 2007;25(8):2025–32.
- Luque-Campos N, Contreras-Lopez RA, Jose Paredes-Martinez M, Torres MJ, Bahraoui S, Wei M, et al. Mesenchymal stem cells improve rheumatoid arthritis progression by controlling memory T cell response. *Front Immunol*. 2019;10:798.
- Luz-Crawford P, Djouad F, Toupet K, Bony C, Franquesa M, Hoogduijn MJ, et al. Mesenchymal stem cell-derived interleukin 1 receptor antagonist promotes macrophage polarization and inhibits B cell differentiation. *Stem Cells*. 2016;34(2):483–92.
- Luz-Crawford P, Noel D, Fernandez X, Khoury M, Figueroa F, Carrion F, et al. Mesenchymal stem cells repress Th17 molecular program through the PD-1 pathway. *PLoS ONE*. 2012;7(9):e45272.
- Noronha NC, Mizukami A, Caliri-Oliveira C, Cominal JG, Rocha JLM, Covas DT, et al. Priming approaches to improve the efficacy of mesenchymal stromal cell-based therapies. *Stem Cell Res Ther*. 2019;10(1):131.
- Sarsenova M, Kim Y, Razyieva K, Kazymbay B, Ogay V, Saparov A. Recent advances to enhance the immunomodulatory potential of mesenchymal stem cells. *Front Immunol*. 2022;13:1010399.
- Contreras-Lopez R, Elizondo-Vega R, Luque-Campos N, Torres MJ, Pradenas C, Tejedor G, et al. The ATP synthase inhibition induces an AMPK-dependent glycolytic switch of mesenchymal stem cells that enhances their immunotherapeutic potential. *Theranostics*. 2021;11(1):445–60.
- Caslini HL, Ababayehu D, Pinette JA, Ryan JJ. Lactate is a metabolic mediator that shapes immune cell fate and function. *Front Physiol*. 2021;12:688485.
- Brooks GA. The tortuous path of lactate shuttle discovery: From cinders and boards to the lab and ICU. *J Sport Health Sci*. 2020;9(5):446–60.
- Rogatzi MJ, Ferguson BS, Goodwin ML, Gladden LB. Lactate is always the end product of glycolysis. *Front Neurosci*. 2015;9:22.
- Elizondo-Vega R, Garcia-Robles MA. Molecular characteristics, regulation, and function of monocarboxylate transporters. *Adv Neurobiol*. 2017;16:255–67.

12. Halestrap AP, Wilson MC. The monocarboxylate transporter family—role and regulation. *IUBMB Life*. 2012;64(2):109–19.
13. Novo C, Fonseca E, Freitas AA. Altered fatty acid membrane composition modifies lymphocyte localization in vivo. *Cell Immunol*. 1987;106(2):387–96.
14. Gizak A, McCubrey JA, Rakus D. Cell-to-cell lactate shuttle operates in heart and is important in age-related heart failure. *Aging*. 2020;12(4):3388–406.
15. Magistretti PJ, Allaman L. Lactate in the brain: from metabolic end-product to signalling molecule. *Nat Rev Neurosci*. 2018;19(4):235–49.
16. Brooks GA. Lactate as a fulcrum of metabolism. *Redox Biol*. 2020;35:101454.
17. Poole RC, Halestrap AP. Transport of lactate and other monocarboxylates across mammalian plasma membranes. *Am J Physiol*. 1993;264(4 Pt 1):C761–82.
18. Lauritzen KH, Morland C, Puchades M, Holm-Hansen S, Hagelin EM, Lauritzen F, et al. Lactate receptor sites link neurotransmission, neurovascular coupling, and brain energy metabolism. *Cereb Cortex*. 2014;24(10):2784–95.
19. Ordenes P, Villar PS, Tarifeno-Saldivia E, Salgado M, Elizondo-Vega R, Araneda RC, et al. Lactate activates hypothalamic POMC neurons by intercellular signaling. *Sci Rep*. 2021;11(1):21644.
20. Brown TP, Bhattacharjee P, Ramachandran S, Sivaprakasam S, Ristic B, Sikder MOF, et al. The lactate receptor GPR81 promotes breast cancer growth via a paracrine mechanism involving antigen-presenting cells in the tumor microenvironment. *Oncogene*. 2020;39(16):3292–304.
21. Haas R, Smith J, Rocher-Ros V, Nadkarni S, Montero-Melendez T, D'Acquisto F, et al. Lactate regulates metabolic and pro-inflammatory circuits in control of t cell migration and effector functions. *PLoS Biol*. 2015;13(7):e1002202.
22. Hoque R, Farooq A, Ghani A, Gorelick F, Mehal WZ. Lactate reduces liver and pancreatic injury in Toll-like receptor- and inflammasome-mediated inflammation via GPR81-mediated suppression of innate immunity. *Gastroenterology*. 2014;146(7):1763–74.
23. Ratter JM, Rooijackers HMM, Hooiveld GJ, Hijmans AGM, de Galan BE, Tack CJ, et al. In vitro and in vivo effects of lactate on metabolism and cytokine production of human primary PBMCs and monocytes. *Front Immunol*. 2018;9:2564.
24. Watson MJ, Vignali PDA, Mullett SJ, Overacre-Delgoffe AE, Peralta RM, Grebinoski S, et al. Metabolic support of tumour-infiltrating regulatory T cells by lactic acid. *Nature*. 2021;591(7851):645–51.
25. Selleri S, Bifsha P, Civini S, Pacelli C, Dieng MM, Lemieux W, et al. Human mesenchymal stromal cell-secreted lactate induces M2-macrophage differentiation by metabolic reprogramming. *Oncotarget*. 2016;7(21):30193–210.
26. González PL, Carvajal C, Cuenca J, Alcayaga-Miranda F, Figueroa FE, Bartolucci J, et al. Chorion mesenchymal stem cells show superior differentiation, immunosuppressive, and angiogenic potentials in comparison with haploidentical maternal placental cells. *Stem Cells Transl Med*. 2015;4(10):1109–21.
27. Kurte M, Luz-Crawford P, Vega-Letter AM, Contreras RA, Tejedor G, Elizondo-Vega R, et al. IL17/IL17RA as a novel signaling axis driving mesenchymal stem cell therapeutic function in experimental autoimmune encephalomyelitis. *Front Immunol*. 2018;9:802.
28. Luz-Crawford P, Kurte M, Bravo-Alegria J, Contreras R, Nova-Lamperti E, Tejedor G, et al. Mesenchymal stem cells generate a CD4⁺CD25⁺Foxp3⁺ regulatory T cell population during the differentiation process of Th1 and Th17 cells. *Stem Cell Res Ther*. 2013;4(3):65.
29. Liu Y, Yuan X, Munoz N, Logan TM, Ma T. Commitment to aerobic glycolysis sustains immunosuppression of human mesenchymal stem cells. *Stem Cells Transl Med*. 2019;8(1):93–106.
30. Jitschin R, Böttcher M, Saul D, Lukassen S, Bruns H, Loschinski R, et al. Inflammation-induced glycolytic switch controls suppressivity of mesenchymal stem cells via STAT1 glycosylation. *Leukemia*. 2019;33(7):1783–96.
31. Angelin A, Gil-de-Gomez L, Dahiya S, Jiao J, Guo L, Levine MH, et al. Foxp3 reprograms T cell metabolism to function in low-glucose, high-lactate environments. *Cell Metab*. 2017;25(6):1282–93.
32. Burgner JW, Ray WJ. The lactate dehydrogenase catalyzed pyruvate adduct reaction: simultaneous general acid-base catalysis involving an enzyme and an external catalyst. *Biochemistry*. 1984;23(16):3626–35.
33. Yoshimoto T, Wang CR, Yoneto T, Matsuzawa A, Cruikshank WW, Nariuchi H. Role of IL-16 in delayed-type hypersensitivity reaction. *Blood*. 2000;95(9):2869–74.
34. Allen IC. Delayed-type hypersensitivity models in mice. *Methods Mol Biol*. 2013;1031:101–7.
35. Halestrap AP. Monocarboxylic acid transport. *Compr Physiol*. 2013;3(4):1611–43.
36. Liu C, Wu J, Zhu J, Kuei C, Yu J, Shelton J, et al. Lactate inhibits lipolysis in fat cells through activation of an orphan G-protein-coupled receptor, GPR81. *J Biol Chem*. 2009;284(5):2811–22.
37. Ahmed K. Biological roles and therapeutic potential of hydroxy-carboxylic acid receptors. *Front Endocrinol*. 2011;2:51.
38. Fischer K, Hoffmann P, Voelkl S, Meidenbauer N, Ammer J, Edinger M, et al. Inhibitory effect of tumor cell-derived lactic acid on human T cells. *Blood*. 2007;109(9):3812–9.
39. Husain Z, Huang Y, Seth P, Sukhatme VP. Tumor-derived lactate modifies antitumor immune response: effect on myeloid-derived suppressor cells and NK cells. *J Immunol*. 2013;191(3):1486–95.
40. Colegio OR, Chu NQ, Szabo AL, Chu T, Rhebergen AM, Jairam V, et al. Functional polarization of tumour-associated macrophages by tumour-derived lactic acid. *Nature*. 2014;513(7519):559–63.
41. Romero-García S, Moreno-Altamirano MM, Prado-García H, Sanchez-García FJ. Lactate contribution to the tumor microenvironment: mechanisms, effects on immune cells and therapeutic relevance. *Front Immunol*. 2016;7:52.
42. Pucino V, Bombardieri M, Pitzalis C, Mauro C. Lactate at the crossroads of metabolism, inflammation, and autoimmunity. *Eur J Immunol*. 2017;47(1):14–21.
43. Lopez Krol A, Nehring HP, Krause FF, Wempe A, Raifer H, Nist A, et al. Lactate induces metabolic and epigenetic reprogramming of pro-inflammatory Th17 cells. *EMBO Rep*. 2022;23(12):e54685.
44. Zhang D, Tang Z, Huang H, Zhou G, Cui C, Weng Y, et al. Metabolic regulation of gene expression by histone lactylation. *Nature*. 2019;574(7779):575–80.
45. Libertini MV, Locasale JW. Histone lactylation: a new role for glucose metabolism. *Trends Biochem Sci*. 2020;45(3):179–82.
46. Lin Y, Wang Y, Li PF. Mutual regulation of lactate dehydrogenase and redox robustness. *Front Physiol*. 2022;13:1038421.
47. Trivedi A, Miyazawa B, Gibb S, Valanoski K, Vivona L, Lin M, et al. Bone marrow donor selection and characterization of MSCs is critical for pre-clinical and clinical cell dose production. *J Transl Med*. 2019;17(1):128.

Publisher's Note

Springer Nature remains neutral with regard to jurisdictional claims in published maps and institutional affiliations.

Ready to submit your research? Choose BMC and benefit from:

- fast, convenient online submission
- thorough peer review by experienced researchers in your field
- rapid publication on acceptance
- support for research data, including large and complex data types
- gold Open Access which fosters wider collaboration and increased citations
- maximum visibility for your research: over 100M website views per year

At BMC, research is always in progress.

Learn more biomedcentral.com/submissions

