



**HAL**  
open science

# Noninvasive and Multicancer Biomarkers: The Promise of LINE-1 Retrotransposons

Aurelien J Doucet, Gael Cristofari

► **To cite this version:**

Aurelien J Doucet, Gael Cristofari. Noninvasive and Multicancer Biomarkers: The Promise of LINE-1 Retrotransposons. *Cancer Discovery*, 2023, 13 (12), pp.2502-2504. 10.1158/2159-8290.CD-23-1063 . inserm-04342008

**HAL Id: inserm-04342008**

**<https://inserm.hal.science/inserm-04342008v1>**

Submitted on 13 Dec 2023

**HAL** is a multi-disciplinary open access archive for the deposit and dissemination of scientific research documents, whether they are published or not. The documents may come from teaching and research institutions in France or abroad, or from public or private research centers.

L'archive ouverte pluridisciplinaire **HAL**, est destinée au dépôt et à la diffusion de documents scientifiques de niveau recherche, publiés ou non, émanant des établissements d'enseignement et de recherche français ou étrangers, des laboratoires publics ou privés.



Distributed under a Creative Commons Attribution 4.0 International License

1 **Noninvasive and multicancer biomarkers: the promise of LINE-1**  
2 **retrotransposons**

3 Aurelien J. Doucet\* and Gael Cristofari\*

4

5 University Cote d'Azur, Inserm, CNRS, Institute for Research on Cancer and Aging of Nice (IRCAN), Nice,  
6 France

7 \* Co-corresponding authors. Correspondence should be addressed to:

8 [Aurelien.Doucet@univ-cotedazur.fr](mailto:Aurelien.Doucet@univ-cotedazur.fr) or [Gael.Cristofari@univ-cotedazur.fr](mailto:Gael.Cristofari@univ-cotedazur.fr)

9

10 **RUNNING TITLE**

11 Circulating retrotransposon protein as cancer biomarker

12 **SUMMARY**

13 LINE-1 retrotransposons are frequently active in epithelial tumors. In a new study, Taylor,  
14 Wu *et al.* now describe that one of the proteins encoded by LINE-1 elements, ORF1p, is  
15 detected in the bloodstream of cancer patients, and can be used as a noninvasive and  
16 multicancer biomarker for diagnosis or treatment monitoring.

17

18 Although almost half of our genome is made up of repeated DNA sequences, these are not  
19 routinely exploited as cancer markers, with the notable exception of microsatellite instability  
20 (MSI). Forming a distinct class of repeats, transposable elements are highly dispersed and  
21 abundant in the human genome. Among them, the Long INterspersed Element-1 (LINE-1 or  
22 L1) is the only element encoding a functional machinery and capable of autonomous  
23 mobilization in humans. L1 replication is based on a copy-and-paste mechanism known as  
24 retrotransposition, involving an RNA intermediate and a reverse transcription step (1)  
25 (**Figure 1**, top). Active L1 copies are 6kb-long expression units, containing an internal  
26 promoter as well as two open reading frames, ORF1 and ORF2. The first encodes an RNA-  
27 binding protein (ORF1p, also known as p40), while the second encodes an enzyme with  
28 endonuclease and reverse transcriptase activities (ORF2p), both essential for  
29 retrotransposition (1). Upon transcription and translation of the bicistronic L1 mRNA, ORF1p  
30 and ORF2p proteins assemble with the L1 mRNA to form L1 ribonucleoprotein particles  
31 (RNPs) that mediate reverse transcription in the nucleus at sites of integration through a  
32 process called target-primed reverse transcription (1).

33 In most tissues, L1 expression is repressed, preventing or limiting L1-mediated mutagenic  
34 activity. However, specific physiological or pathological situations are associated with a  
35 profound remodeling of the cellular epigenetic landscape, opening windows of opportunity  
36 for L1 expression and even mobilization (2). For instance, the germline and early embryo  
37 can harbor high levels of L1 activity. In these territories, new insertions create inheritable  
38 polymorphisms and thereby contribute to the genetic diversity of the human population.  
39 Occasionally they can also cause genetic diseases (1). L1 expression was also reported in a  
40 few somatic tissues, such as the brain or senescent cells thereby contributing to age-  
41 associated inflammation (2,3).

42 As early as the 90's, the L1 ORF1p was found as specifically expressed in some tumors but  
43 not in adjacent normal tissues, and L1-mediated somatic mutations could be identified in

44 colon cancer. More recently, the advent of high-throughput sequencing technologies and the  
45 development of monoclonal antibodies against ORF1p have extended these initial  
46 observations (4,5). A large survey suggested that nearly half of human epithelial tumors  
47 show L1 ORF1p expression (5). Moreover, L1 somatic retrotransposition, as well as other  
48 forms of L1-mediated genomic alterations, are detected in several epithelial cancer types  
49 such as lung, colorectal, liver, breast, uterine, ovarian, prostate, and head-and-neck  
50 cancers, but are virtually undetectable in leukemia or brain tumors (6). Even if examples of  
51 L1 insertions acting as drivers of tumorigenesis are limited, L1 promoter hypomethylation  
52 and ORF1p levels often correlate with poor prognosis in many cancer types. Moreover, the  
53 accumulation of ORF1p in tumors is associated with *TP53* loss-of-function, consistent with  
54 the notion that high level of L1 activity is associated with genomic instability (5). Altogether,  
55 these observations have led to the notion that ORF1p expression in tumors could serve as a  
56 biomarker for cancer diagnosis or treatment outcome, but the translation of this idea into  
57 clinically relevant assays has been limited so far.

58 In this issue of *Cancer Discovery*, Taylor, Wu *et al.* (7) develop several ultrasensitive  
59 immunoassays to detect L1 ORF1p, and they identify circulating ORF1p as a highly specific  
60 cancer biomarker, that is thus amenable to liquid biopsy (**Figure 1**).

61 The authors first produced and characterized a new set of monoclonal antibodies and  
62 nanobodies targeting ORF1p with high specificity and affinity, which they use to implement  
63 digital immunoassays (**Figure 1**, bottom). These single-molecule approaches are based on  
64 a “sandwich” immunocomplex similar to Enzyme Linked Immunosorbent Assays (ELISAs).  
65 Beads coated with a first antibody capture the target protein, while a second antibody allows  
66 the detection of the first immunocomplex through an enzymatic reaction. However, unlike  
67 ELISA, quantification is digital, achieved by recording the number of negative and positive  
68 beads (like the 0 and 1 in binary coding) rather than measuring signal intensity, enabling  
69 highly sensitive detection of low-concentration targets. These technical developments have

70 led to a remarkable sensitivity, reaching the attomolar range in the most sensitive versions of  
71 their assays, and to the discovery that free circulating ORF1p can be detected in the  
72 bloodstream.

73 By comparing healthy donors with patients diagnosed with various forms of cancers of  
74 epithelial origin, Taylor, Wu *et al.* revealed that circulating ORF1p is a highly specific  
75 multicancer biomarker (7). Patients affected by breast, ovarian, uterine, colorectal,  
76 gastroesophageal, pancreatic, liver, lung, head and neck, or prostate cancers display  
77 detectable levels of circulating ORF1p, in the range of 10 to 75% of patients depending on  
78 the cancer type, while it was only detectable in around 1% of the healthy donors. With a  
79 second-generation assay, circulating L1 ORF1p could be detected in as much as 75% of  
80 colorectal cancer patients and 90% of ovarian cancer patients. Combining the detection of  
81 circulating ORF1p with other currently available biomarkers, such as CA125 and HE4 in  
82 ovarian cancer, improved the performance of the diagnosis. Anecdotally, one of the healthy  
83 donors tested had a higher level of circulating ORF1p than any of the cancer patients in the  
84 study. Although the patient was considered healthy at the time of blood donation, he was in  
85 fact subsequently diagnosed with cancer. While most of the ORF1p-positive patients were at  
86 a late stage, the sensitivity of the assay also allowed identification of patients with early  
87 stages of ovarian and lung cancers. Circulating ORF1p could thus become a powerful  
88 multicancer and noninvasive biomarker for early diagnosis and early treatment at a stage  
89 when patients are often asymptomatic.

90 Finally, Taylor, Wu *et al.* (7) investigated the levels of circulating ORF1p in the plasma of  
91 patients that underwent therapy. In a group of gastroesophageal cancer patients that  
92 received systemic therapy, circulating ORF1p levels are correlated with the clinical response  
93 to treatment. Patients with low ORF1p levels prior to treatment showed a better clinical  
94 response than patients with high levels. In this cohort, high levels of circulating ORF1p

95 before therapy were also associated with reduced survival. Thus, circulating ORF1p levels  
96 could also serve as an early predictor of response to therapy.

97 Understanding why some tumors express ORF1p and other not is a key question as ORF1p-  
98 negative tumors represent a potential source of false negatives. Some cancer types, not  
99 studied in the present work, such as neurologic or hematological cancers, appear to  
100 reactivate L1 elements to a very limited extent (6). However, even within cancer types of  
101 epithelial origin, some patients do not show ORF1p-positive tumors and have undetectable  
102 circulating ORF1p (5,7). ORF1p positivity was found to be strongly associated with *TP53*  
103 loss of function (5,7). By identifying other factors influencing L1 expression in tumors, it may  
104 be possible to rationally design panels of complementary circulating biomarkers. In addition,  
105 individual human genomes contain a unique combination of inherited L1 loci, some being  
106 fixed in the human population, but others being polymorphic with respect to their presence or  
107 absence, or to their internal sequence (4,8,9). Among these loci, only a small subset has the  
108 potential to express a functional ORF1p and an even more restricted subset is capable of  
109 somatic retrotransposition. Thus, it is conceivable that the ability of tumors to express  
110 ORF1p or not depends on the ancestry of the patient. Being able to identify which loci  
111 contribute the most to circulating ORF1p could help improve and personalize the accuracy of  
112 the diagnosis.

113 Defining the baseline level of circulating ORF1p in a large cohort representing the general  
114 population will be essential in the future. What are the tissues of origin of the low ORF1p  
115 levels detected in healthy individuals? As mentioned above, L1 expression can occur in  
116 cancer cells but also in germ cells and senescent cells. The work by Taylor, Wu *et al.* (7)  
117 suggests that circulating ORF1p is not correlated with age or sex. It is possible that, in some  
118 cases, circulating ORF1p in healthy individuals originate from microtumors that would never  
119 grow and lead to disease, or would be naturally eliminated by the immune system, raising a  
120 risk of over-diagnosis. The question of how ORF1p is specifically released into the

121 bloodstream by cancer cells and not by other cell types expressing L1 remains open. The  
122 level of expression could simply be higher in cancer cells, but cancer cells may also exhibit  
123 unique release pathways. Size exclusion chromatography experiments suggest at least that  
124 the process does not involve extracellular vesicles (7).

125 Retrotransposon-derived antigens have recently emerged as potential targets for antitumoral  
126 immunotherapy (10). In the present study, Taylor, Wu *et al.* (7) extend the use of  
127 retrotransposon proteins to cancer diagnostics. They provide a proof-of-concept that the  
128 early detection of circulating ORF1p by digital immunoassays is a promising strategy to  
129 diagnose cancer and monitor the early-response to treatment in a noninvasive manner,  
130 through a simple and cost-effective blood test. Such a noninvasive follow-up could help to  
131 dynamically adjust treatment of cancer patients. Its adoption in the clinical practice will  
132 depend on automation for implementation in clinical laboratories, and on future clinical trials  
133 on larger cohorts to define the practical use of this new biomarker.

#### 134 **ACKNOWLEDGMENTS**

135 We thank Dr. Dominic van Essen for critical review of the manuscript. This work was  
136 supported by the Agence Nationale de la Recherche (Labex SIGNALIFE, ANR-11-LABX-  
137 0028; Idex UCAJEDI, ANR-15-IDEX-01; ImpacTE, ANR-19-CE12-0032; ActiveLINE, ANR-  
138 21-CE12-0001), the Institut National du Cancer (INCa PLBIO 2020-095), Inserm (GOLD  
139 cross-cutting program on genomic variability), CNRS (GDR 3546). This work was funded, in  
140 whole or in part, by the Agence Nationale de la Recherche, Grant ANR-21-CE12-0001. A  
141 CC-BY public copyright license has been applied by the authors to the present document  
142 and will be applied to all subsequent versions up to the Author Accepted Manuscript arising  
143 from this submission, in accordance with the grant's open access conditions.

144

145 **VERSION OF RECORD**

146 Noninvasive and Multicancer Biomarkers: The Promise of LINE-1 Retrotransposons. Doucet  
147 AJ, Cristofari G. *Cancer Discov.* 2023 Dec 12;13(12):2502-2504. doi: 10.1158/2159-  
148 8290.CD-23-1063

149 The pdf of the Version of Record is available at the following address:

150 [https://aacrjournals.org/cancerdiscovery/article-abstract/13/12/2502/731617/Noninvasive-  
and-Multicancer-Biomarkers-The-Promise](https://aacrjournals.org/cancerdiscovery/article-abstract/13/12/2502/731617/Noninvasive-<br/>151 and-Multicancer-Biomarkers-The-Promise)

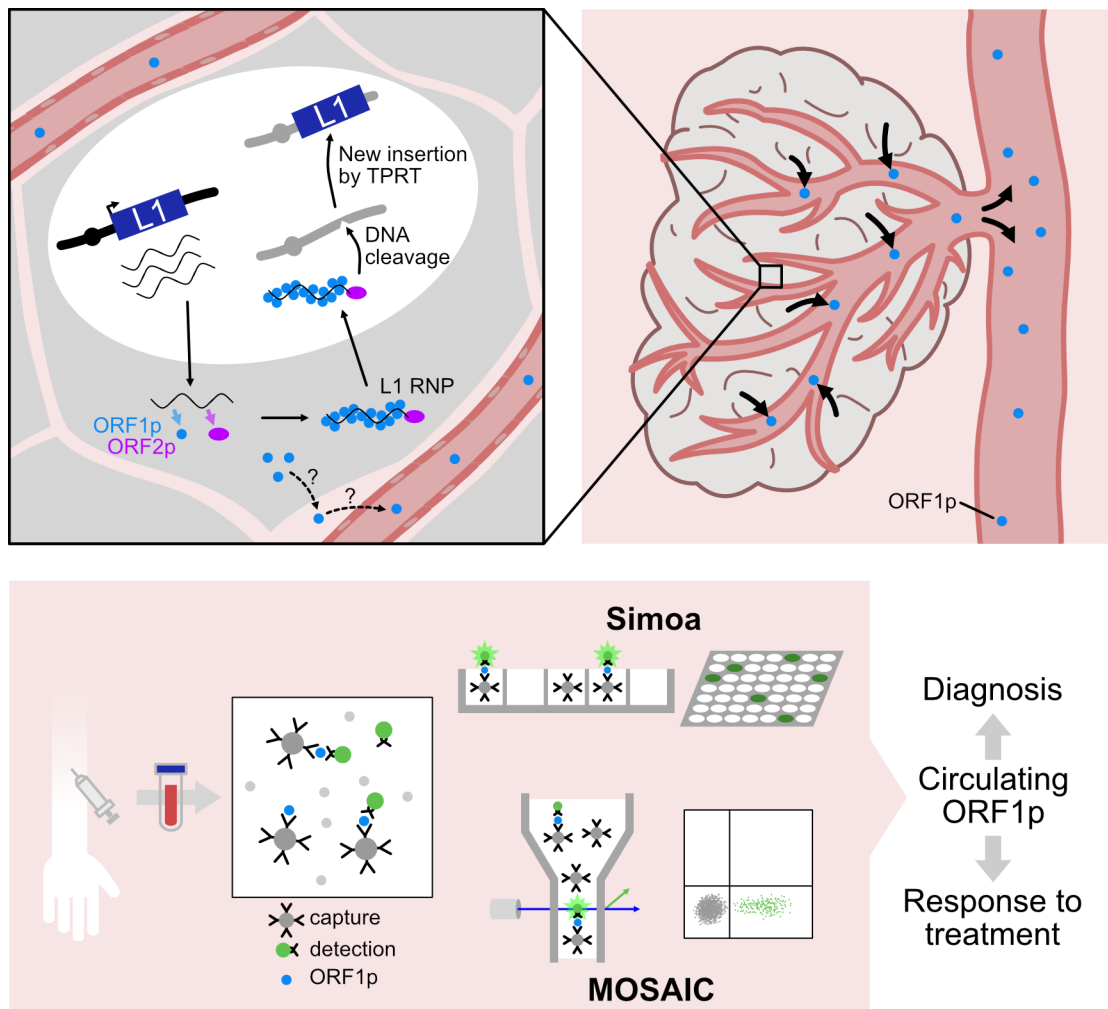
152



153 **REFERENCES**

- 154 1. Kazazian HH, Moran JV. Mobile DNA in Health and Disease. *N Engl J Med.*  
155 2017;377:361–70.
- 156 2. Faulkner GJ, Billon V. L1 retrotransposition in the soma: a field jumping ahead. *Mob*  
157 *DNA.* 2018;9:22.
- 158 3. Gorbunova V, Seluanov A, Mita P, McKerrow W, Fenyö D, Boeke JD, et al. The role of  
159 retrotransposable elements in ageing and age-associated diseases. *Nature.* 2021;596:43–  
160 53.
- 161 4. Iskow RC, McCabe MT, Mills RE, Torene S, Pittard WS, Neuwald AF, et al. Natural  
162 mutagenesis of human genomes by endogenous retrotransposons. *Cell.* 2010;141:1253–61.
- 163 5. Rodić N, Sharma R, Sharma R, Zampella J, Dai L, Taylor MS, et al. Long interspersed  
164 element-1 protein expression is a hallmark of many human cancers. *Am J Pathol.*  
165 2014;184:1280–6.
- 166 6. Rodríguez-Martín B, Alvarez EG, Baez-Ortega A, Zamora J, Supek F, Demeulemeester  
167 J, et al. Pan-cancer analysis of whole genomes identifies driver rearrangements promoted  
168 by LINE-1 retrotransposition. *Nat Genet.* 2020;52:306–19.
- 169 7. Taylor MS, Wu C, Fridy PC, Zhang SJ, Senussi Y, Wolters JC, et al. Ultrasensitive  
170 detection of circulating LINE-1 ORF1p as a specific multi-cancer biomarker. *Cancer Discov*  
171 [Internet]. 2023 [cited 2023 Sep 14]; Available from: [https://doi.org/10.1158/2159-8290.CD-](https://doi.org/10.1158/2159-8290.CD-23-0313)  
172 [23-0313](https://doi.org/10.1158/2159-8290.CD-23-0313)
- 173 8. Beck CR, Collier P, Macfarlane C, Malig M, Kidd JM, Eichler EE, et al. LINE-1  
174 retrotransposition activity in human genomes. *Cell.* 2010;141:1159–70.
- 175 9. Philippe C, Vargas-Landin DB, Doucet AJ, van Essen D, Vera-Otarola J, Kuciak M, et al.  
176 Activation of individual L1 retrotransposon instances is restricted to cell-type dependent  
177 permissive loci. *eLife.* 2016;5:166.
- 178 10. Lanciano S, Cristofari G. Cancer Immunotherapy: How to Exploit Transposable  
179 Elements? *Clin Chem.* 2023;hvad091.

180



182

183 **Figure 1 – A circulating L1 retrotransposon protein, ORF1p, as a noninvasive, broad**  
 184 **usage, multicancer biomarker.**

185 **Top:** Schematic representation of an L1-expressing cancer cell within a vascularized tumor.  
 186 An active L1 locus is transcribed (blue box, in black chromosome) to synthesize bicistronic  
 187 L1 mRNAs (wavy lines). Translation occurs in the cytoplasm to produce ORF1p (blue circle)  
 188 and ORF2p (purple oval). An L1 ribonucleoprotein particle (RNP) is formed by the  
 189 association between the L1 mRNA, ORF1p and ORF2p. By entering in the nucleus, the L1  
 190 RNP can insert a new L1 copy into another locus (black box in grey chromosome) through  
 191 DNA cleavage and a process called Target-Primed Reverse Transcription (TPRT) (1).

192 Taylor, Wu *et al.* describe the presence of ORF1p in the bloodstream (blue dots in red  
193 vessels) of patients diagnosed with a subset of epithelial cancers (7). The mechanism by  
194 which ORF1p is released from cancer cells and reaches the bloodstream is currently  
195 unknown (dashed arrows with question mark).

196 **Bottom:** Ultrasensitive detection of circulating ORF1p from blood samples. The procedure is  
197 based on a simple blood test. Taylor, Wu *et al.* measured plasmatic levels of ORF1p by  
198 digital immunoassays relying on a bead-based “sandwich” immunocomplex, which combines  
199 capture and detection antibodies or nanobodies with high affinity for ORF1p (7). Two  
200 strategies were employed: Single Molecule Arrays (Simoa), and Molecular On-bead Signal  
201 Amplification for Individual Counting (MOSAIC). Simoa is performed in a plate format with  
202 each well containing a single bead through an enzymatic detection, whereas MOSAIC relies  
203 on the evaluation of positive and negative beads by flow-cytometry through a secondary  
204 amplification process and fluorescence. Ultimately, the presence of circulating ORF1p can  
205 be used for the diagnosis and monitoring of cancer patients in a noninvasive manner, and  
206 can apply to multiple cancer types, such as colorectal or ovarian cancers.

207