



HAL
open science

Clinical characteristics and outcomes for children, adolescents and young adults with “CIC-fused” or “BCOR-rearranged” soft tissue sarcomas: A multi-institutional European retrospective analysis

Monika Sparber-Sauer, Nadège Corradini, Maria Carmen Affinita, Giuseppe Maria Milano, Gaëlle Pierron, Matthieu Carton, Franck Tirode, Daniel Pissaloux, Rita Alaggio, Christian Vokuhl, et al.

► **To cite this version:**

Monika Sparber-Sauer, Nadège Corradini, Maria Carmen Affinita, Giuseppe Maria Milano, Gaëlle Pierron, et al.. Clinical characteristics and outcomes for children, adolescents and young adults with “CIC-fused” or “BCOR-rearranged” soft tissue sarcomas: A multi-institutional European retrospective analysis. *Cancer Medicine*, 2023, 12 (13), pp.14346-14359. 10.1002/cam4.6113 . inserm-04320793

HAL Id: inserm-04320793





<https://inserm.hal.science/inserm-04320793>

Submitted on 4 Dec 2023

HAL is a multi-disciplinary open access archive for the deposit and dissemination of scientific research documents, whether they are published or not. The documents may come from teaching and research institutions in France or abroad, or from public or private research centers.

L'archive ouverte pluridisciplinaire **HAL**, est destinée au dépôt et à la diffusion de documents scientifiques de niveau recherche, publiés ou non, émanant des établissements d'enseignement et de recherche français ou étrangers, des laboratoires publics ou privés.

Clinical characteristics and outcomes for children, adolescents and young adults with “CIC-fused” or “BCOR-rearranged” soft tissue sarcomas: A multi-institutional European retrospective analysis

Monika Sparber-Sauer^{1,2}  | Nadège Corradini³ | Maria Carmen Affinita⁴  | Giuseppe Maria Milano⁵ | Gaele Pierron⁶ | Matthieu Carton⁷  | Franck Tirode^{8,9} | Daniel Pissaloux^{8,9} | Rita Alaggio¹⁰ | Christian Vokuhl¹¹ | Gianni Bisogno⁴ | Pablo Berlanga¹² | Andrea Ferrari¹³ | Daniel Orbach¹⁴ 

¹Klinikum der Landeshauptstadt Stuttgart gKAöR, Olgahospital, Stuttgart Cancer Center, Zentrum für Kinder-, Jugend- und Frauenmedizin, Pädiatrie 5 (Pädiatrische Onkologie, Hämatologie, Immunologie), Stuttgart, Germany

²Medizinische Fakultät der Universität Tübingen, Tübingen, Germany

³Department of Pediatric Hematology and Oncology-IHOPE, Léon Bérard Center, Lyon, France

⁴Pediatric Hematology, Oncology and Stem Cell Transplant Division, Department of Women's and Children's Health University Hospital of Padova, Padova, Italy

⁵Department of Hematology and Oncology, Cell and Gene Therapy, Bambino Gesù Children's Hospital, IRCCS, Rome, Italy

⁶Department of Somatic Genetics, Institut Curie, Paris, France

⁷Department of Biometry, Institut Curie, DRICI, PSL Research University, Paris, France

⁸Department of Biopathology, Centre Léon Bérard, Lyon, France

⁹INSERM U1052, Cancer Research Centre of Lyon, Lyon, France

¹⁰Pathology Unit, Department of Laboratories, Bambino Gesù Children's Hospital, IRCCS, Rome, Italy

¹¹Section of Pediatric Pathology, Department of Pathology, Bonn, Germany

¹²Department of Pediatric and Adolescent Oncology, Gustave Roussy Cancer Campus, Université Paris-Saclay, Villejuif, France

¹³Pediatric Oncology Unit, Fondazione IRCCS Istituto Nazionale Tumori, Milan, Italy

¹⁴SIREDO Oncology Center (Care, Innovation and Research for Children, Adolescents and Young Adults with Cancer), Institut Curie, PSL University, Paris, France

Correspondence

Daniel Orbach, SIREDO Oncology Center (Care, Innovation and Research for Children, Adolescents and Young Adults with Cancer), Institut Curie, PSL University, Paris, France.
Email: daniel.orbach@curie.fr

Funding information

Deutsche Kinderkrebsstiftung, Grant/Award Number: A2007/13DKS2009.08;

Abstract

Background: In certain rare undifferentiated small round cell sarcomas new specific molecular *CIC-DUX4*/other partner, *BCOR-CCNB3*/other partner, *YWHAE* fusions, or *BCOR-ITD* (internal tandem duplication) were identified. These new “*CIC fused*” (*CIC-fused/ATXN1::NUTM1*) and “*BCOR rearranged*” (*BCOR fused/ITD/ YWHAE*) soft tissue sarcomas (STS) are not well described.

Findings were presented at the 54th Annual Congress of the international society of pediatric oncology SIOF Barcelona 2022, abstract number 233.

This is an open access article under the terms of the [Creative Commons Attribution](https://creativecommons.org/licenses/by/4.0/) License, which permits use, distribution and reproduction in any medium, provided the original work is properly cited.

© 2023 The Authors. *Cancer Medicine* published by John Wiley & Sons Ltd.

Foerderkreis Krebskranke Kinder;
Fondazione Città della Speranza; S
Wisnia

Methods: Multi-institutional European retrospective analysis of young patients (0–24 years) with CIC-fused and BCOR rearranged STS.

Results: Overall, out of the 60 patients selected, the fusion status was CIC-fused ($n=29$), *ATXN1::NUTM1* ($n=2$), *BCOR::CCNB3* ($n=18$), BCOR-ITD ($n=7$), and *YWHAE* ($n=3$), *MAML::BCOR* STS ($n=1$). The main primaries were abdomen-pelvic ($n=23$) and limbs ($n=18$). Median age was 14 years (0.9–23.8) and 0.9 (0.1–19.1) for CIC-fused and BCOR-rearranged groups, respectively ($n=29$; $p<0.001$). IRS stages were I ($n=3$), II ($n=7$), III ($n=35$), and IV ($n=15$). Overall, 42 patients had large tumors (>5 cm) but only six had lymph node involvement. Patients received mainly chemotherapy ($n=57$), local surgery ($n=50$), and/or radiotherapy ($n=34$). After a median follow-up of 47.1 months (range, 3.4–230), 33 (52%) patients had an event and 23 patients died. Three-year event-free survivals were 44.0% (95% CI 28.7–67.5) and 41.2% (95% CI 25.4–67.0) for CIC and BCOR groups ($p=0.97$), respectively. Three-year overall survivals were 46.3% (95% CI 29.6–72.4) and 67.1% (95% CI 50.4–89.3; $p=0.24$), respectively.

Conclusions: Pediatric patients often present with large tumors and metastatic disease, especially CIC sarcomas. Overall outcome is dismal. New treatment options are needed.

KEYWORDS

BCOR rearrangement, *CIC-DUX* fusion transcript, pediatric/adolescent oncology, soft tissue sarcoma, *YWHAE* fusion transcript

1 | INTRODUCTION

A new subset of round/ovoid cell sarcomas histologically resembling tumors of the Ewing sarcoma family (ESFT) has been recently characterized in unclassified/undifferentiated small round cell sarcoma (USRCS or SRCs).^{1–6} Previously known as “Ewing-like sarcomas” (ELS), these tumors are currently distinguished from Ewing sarcoma in the current WHO classification. With molecular assays these tumors have been genetically characterized and are now under assessment if these entities may represent distinct biologic tumor entities.^{7–10} Accordingly, a new subtype of bone sarcoma has been characterized by a *BCOR::CCNB3* gene fusion.¹¹ This discovery offers new insight into oncogenesis and future new therapeutic considerations. Rare *BCOR* sarcoma was described in a group of small round cell bone tumors lacking the canonical *EWSR1* translocation: only 24 *BCOR::CCNB3* positive tumors could be identified in an analysis of 594 sarcoma.¹¹ Other “*BCOR* rearranged sarcomas” have been described with molecular characteristics as *BCOR-ITD* (internal tandem duplication).¹² These *BCOR-ITD* tumors are reported to be aggressive tumor entities with an ITD in the last exon of the *BCOR* gene. With location in the kidney, these

sarcomas are described as clear cell sarcomas of the kidney (CCSK).¹³ However, these sarcomas are also described as high-grade endometrial stromal sarcomas (HG-ESS)^{14,15} in bone and soft tissue, referred to as USRCS, but also occurring in infants as primitive mesenchymal myxoid tumor (PMMTI).^{16–18} *CIC::DUX4* sarcoma (CDS) or CIC-rearranged sarcomas seem a rare subcategory of another small round cell sarcoma with histological signs of Ewing sarcoma (ES).² For extracranial sites, “*CIC* fused sarcoma” group had biological homology as the “*BCOR* rearranged sarcoma” group.⁶ In recent analysis, *ATXN1* tumors clustered with CIC tumors and *YWHAE* fused tumors within the BCOR tumors group. For the *BCOR-ITD* tumors no radiological, clinical, nor pathological specificity could be found, except for location in the central nervous system but a common transcriptomic signature with other *BCOR* rearranged sarcomas.¹⁸ However, all these are described as a distinct entity from ES, and occur in various sites as soft tissue, visceral primaries and less often bone.^{3,19}

Therapeutic options for such tumors frequently include chemotherapy (CHT) and local surgery with radiotherapy (RT) analogous to treatment of soft tissue sarcomas or ES.¹⁹ There are few data available regarding the clinical description of these tumors when the primary site is soft tissue. We describe the clinical characteristics, treatment,

outcomes, and prognostic factors of an European cohort of pediatric and young patients with *CIC*, *BCOR*, or *YWHAE* gene rearranged soft tissue sarcomas.

2 | METHODS

This retrospective multi-institutional study registered all patients aged ≤ 24 years at the time of diagnosis with USRCS in soft tissues identified from local coordinators as *CIC*, *BCOR*, or *YWHAE* gene rearranged sarcomas. Location in bone, central nervous system, or kidney were exclusion criteria. Patients diagnosed between 1996 and 2021 with available clinical data and at least 3 months of follow-up were included. All specimen were reviewed by expert pathologists or by central review for those that were enrolled on clinical trials. Available molecular data were mandatory for all cases.⁶ In clinical practice, diagnosis of the oncogenic fusion was performed using molecular techniques such as fluorescence in situ hybridization (FISH), reverse transcription polymerase chain reaction (RT-PCR), or targeted RNA sequencing.⁶ Depending on tumor tissue availability, RT-PCR, next-generation RNA sequencing (RNA seq) or clustering, and methylation profile were performed on paraffin-embedded and/or fresh frozen tissue.^{2,4,20} Recently, all cases of tumors with pathological Ewing characteristics that do not harbor the canonic EWS fusion transcript, were systematically analyzed with RNA sequencing and/or RT-PCR with specific combination of primer sets for *CIC::DUX4* and *BCOR* and/or FISH analysis with probes for *CIC* (*19q13.2*), for *BCOR* a dual color break apart probe (*Xp 11.4*) and for *YWHAE* (*17p13.3*).^{11,21,22} The order of this techniques varies according to each institutional organization. For some old cases, analysis could have been performed retrospectively.

Due to their biological homology, all sarcomas with *CIC::DUX4*, *CIC* break, or *ATXN1::NUTM1* fusion transcript were gathered in the “*CIC* fused sarcoma” group and sarcomas with *BCOR::CCNB3*, *BCOR-ITD*, *YWHAE::NUTM2B*, or *MAML::BCOR* fusion transcripts represent the “*BCOR* rearranged sarcoma” group.⁶

Guardians of included patients had consented to data collection and retrospective chart review. This was performed per the requirements of the Declaration of Helsinki and in accordance with the regulations of the respective ethical committee (Ethikkommission Tübingen 413/2022BO2 from August 18, 2022).

2.1 | Definition of terms

Clinical staging was defined according to the Tumor Node Metastases (TNM) system: T1 or T2 according to the

invasion of contiguous organs; N0/N1 according to the presence of lymph node metastases and M0/M1 of distant metastases.²³ Postsurgical staging was classified according to the International Rhabdomyosarcoma Study grouping (IRS-G) system. IRS-I corresponds to a complete tumor resection with microscopically complete margins, IRS-II corresponds to a macroscopic resection but invaded histologic margins and IRS-III corresponds to a macroscopic residual tumor after biopsy or immediate surgery. IRS-IV corresponds to metastatic disease.²⁴ Initial staging included imaging of the primary tumor and bone/lung metastases by magnetic resonance imaging (MRI) or computed tomography (CT). Whole body imaging was recommended with radionuclide bone scan or 18F-fluorodeoxyglucose positron emission tomography. Staging included bone marrow aspirate/biopsy. Tumor response was mainly assessed after 3–4 courses of CHT: complete response (CR), partial response (PR), or stable disease (SD).²⁵ Delayed surgical resection was defined if the resection took part after initiation of chemotherapy. “Extent of tumor resection” was defined as the best surgical result in the sum of any surgeries that were performed in one patient during the first-line therapy. Primary tumor resection was classified as microscopically complete (R0), microscopically incomplete (R1), or macroscopically incomplete (R2).²⁶ “Best tumor response” was the best available response at any time point after start chemotherapy. Progressive disease (PD) was defined as first event with in case of any increase in tumor volume in patients who did not achieve CR.²⁷

2.2 | Therapy

No dedicated protocols were available and the treatment strategy the individual decision of the treating physicians. Patients were classically treated according to Ewing's or soft tissue sarcoma (STS)/ rhabdomyosarcoma (RMS) protocols, with a combination of therapies including neoadjuvant and adjuvant CHT, surgical resection, and/or radiation therapy (RT) of the primary according to initial tumor extension and the response to initial chemotherapy.²⁸ Primary resection was performed if a non-mutilating procedure was possible. RT was given as individual decision of the treating center.

2.3 | Statistical analysis

Survival time was measured from the date of diagnosis (initial biopsy/surgery) to the time of last follow-up or event. Event-free survival (EFS) was defined as the time from diagnosis to the date of local relapse or any lymph node or metastatic tumor progression or death from any

cause. Overall survival (OS) was calculated from the date of biopsy/surgery to death from any cause. Patients alive without local recurrence or metastasis at last contact were censored at the date of last follow-up. Kaplan–Meier method was used for survival curves and log-rank test to calculate the differences between survivals. The prognostic role of risk factors (gender, age at diagnosis [\pm median of the cohort], tumor size [± 5 cm] and site, TNM status, IRS groups [IRS I–II vs. III vs. IV] and type of tumor groups [*CIC*-fused vs. *BCOR* groups]) were considered for their impact on EFS and OS by comparing Kaplan–Meier curves using log-rank tests and Cox univariate and multivariate models. All risk factors significant at least at p 0.25 in univariate analysis were included in the multivariable model; type of tumor group was forced in every model.

3 | RESULTS

3.1 | Patients' characteristics and demography

Since 1996, 60 patients fulfilled the inclusion criteria. Patients were treated in France ($n=31$), Italy ($n=18$), Germany ($n=10$), and Switzerland ($n=1$). Patients' and tumors' characteristics are presented in [Tables 1](#) and [2](#). Median age of patients at initial diagnosis with “*CIC* fused sarcoma” was 14 years (range, 0.9–23.8), and 0.9 years (range, 0–19.1) for “*BCOR* rearranged sarcomas”. Primary tumor was mainly located in trunk (53%) and specifically in abdomen/pelvic site (38%). Tumors were frequently large (>5 cm, 72%) and extensive T2 (60%) but only 11% had lymph node involvement. In 58% of patients, the primary tumor was unresectable at diagnosis (IRS-III, $n=35$) and metastatic disease was present in 25% (IRS-IV, $n=15$). Metastatic patients had mostly pulmonary metastases ($n=9/15$) and “*CIC*-fused sarcoma” ($n=13/15$).

Pathologic diagnosis was mainly USRCS ($n=19$), other undifferentiated type sarcoma (UDS, $n=14$), “ELS” ($n=13$) and various ($n=14$) ([Table 2](#)). Overall, 31 (52%) contained a molecular rearrangement of the “*CIC* fused sarcoma” group and 29 of the “*BCOR* rearranged sarcoma” group. “*CIC* fused sarcoma” group consisted of *CIC::DUX4* ($n=22$), *CIC* break (FISH) ($n=7$) and *ATXN1::NUTM1* ($n=2$). The “*BCOR* rearranged sarcoma” group consisted of *BCOR::CCNB3* ($n=18$), *BCOR-ITD* ($n=7$), *YWHAE::NUTM2B* ($n=3$), and *MAML::BCOR* STS ($n=1$; [Table 2](#)).

3.2 | Treatment

Patients received chemotherapy ($n=57$), local surgery ($n=50$), and/or radiotherapy ($n=34$) ([Table 3](#)). Systemic

treatment was delivered according to STS/RMS protocols (IVA/VAC, VAIA, IVADo, Ifo-Doxo; $n=33$) or Ewing sarcoma protocol (VDC-IE/VIDE/VAI; $n=19$). No CHT was administered in three young patients (<3 years old) with localized *BCOR* rearranged tumor (2 IRS-II without any other therapy, and 1 IRS-III with adjuvant radiotherapy). Most patients received alkylating based CHT: ifosfamide ($n=27$) or cyclophosphamide ($n=2$) or both ($n=15$). Anthracyclines based regimen were frequently added (80%), especially for “*CIC* fused sarcomas”. Additional HD CHT, with busulfan and melphalan ($n=4$) or unspecified regimen ($n=1$), was delivered in IRS-III tumors ($n=4$) and IRS-IV ($n=1$). Maintenance treatment with cyclophosphamide/vinorelbine ($n=5$) or oral trofosfamide/idarubicine/etoposide ($n=1$) was given (unspecified regimen, $n=2$). Local primary tumor resection was performed at diagnosis ($n=20$), as delayed resection after CHT \pm RT reduction ($n=28$) or both ($n=2$). Most patients with initial unresected/unresectable tumor (IRS group III) could benefit for a R0-R1 delayed resection in 22/35 cases (63%).

RT of the primary tumor was delivered ($n=34$): for localized disease ($n=26$) and metastatic disease ($n=8$) after best result R0 resection ($n=17$), R1 resection ($n=6$) and R2 resection ($n=3$) (details on resection not available [$n=2$]), or exclusively ($n=6$). Median radiation dose at primary tumor was 54 Gray (Gy; range, 42–60). Metastatic sites were irradiated on lung metastases at 18 Gy ($n=6$; missing data, $n=2$).

Patients with *CIC* sarcomas were more likely to receive primary surgery and irradiation, while *BCOR* tumors were more frequently treated with exclusive surgery ($p=0.04$, [Table 3](#)).

3.3 | Characteristics according to molecular group

In the cohort of 31 patients with “*CIC* fusion sarcoma”, median age was 14 years (range 0.9–23.8) and metastatic disease was present in 13/31 patients (42%, [Table 1](#), [Table S1](#)). Most patients had no regional lymph node involvement (84%), were female (65%) with a primary tumor frequently located in limbs (45%). Maximum tumor size was mainly >5 cm (68%), and extensive (T2, 68%). In contrast, the 29 patients in the “*BCOR* rearranged sarcoma” group were younger ($p<0.001$) with a median age of 0.9 years overall (0.1–19.1) and specifically 4 years (range, 0.1–19.1) for *BCOR::CCNB3* ($n=18$) and 1 year (0.3–18.3) for *BCOR-ITD* ($n=7$). Localized disease was present in 27/29 patients (93%, $p=0.002$), with metastasis or nodal involvement only present for two *YWHAE::NUTM2B* fused tumors. Most patients were

| | CIC-fused sarcomas 31 cases | BCOR rearranged tumors 29 cases | Total | <i>p</i> value |
|---------------------------------|-----------------------------|---------------------------------|-------|----------------|
| Median age (range) years | 14 (0.9–23.8) | 0.9 (0–19.1) | 60 | <0.001 |
| Gender | | | | <0.001 |
| Male | 11 | 23 | 34 | |
| Female | 20 | 6 | 26 | |
| Tumor site | | | | 0.011 |
| Head and neck | 6 | 4 | 10 | |
| Limbs | 14 | 4 | 18 | |
| Trunk (thorax, pelvis, abdomen) | 11 | 21 | 32 | |
| Tumor size | | | | 1 |
| ≤5 cm | 8 | 8 | 16 | |
| >5 cm | 21 | 21 | 42 | |
| NA | 2 | 0 | 2 | |
| T status | | | | 0.65 |
| T1 | 10 | 11 | 21 | |
| T2 | 21 | 18 | 39 | |
| N status | | | | 1 |
| N0 | 26 | 25 | 51 | |
| N1 | 3 | 3 | 6 | |
| NA | 2 | 1 | 3 | |
| M status | | | | 0.002 |
| M0 | 18 | 27 | 45 | |
| M1 | 13 | 2 | 15 | |
| IRS stage | | | | 0.006 |
| IRS I–II | 3 | 7 | 10 | |
| IRS III | 15 | 20 | 35 | |
| IRS IV | 13 | 2 | 15 | |

Abbreviations: IRS, Intergroup Rhabdomyosarcoma Staging; M, metastasis; N, node; NA, not available; R0, complete resection (IRS-I); R1, incomplete microscopic resection (IRS-II); R2, macroscopic residue (IRS III); T, tumor.

male (79%, $p < 0.001$), with frequent abdomen/ pelvis primary (72%, $p = 0.011$). Tumor size was also frequently large (>5 cm; 72%) and T2 (62%) (Table 1, Table S2).

Patients with “CIC fused sarcoma” had been treated more often with CHT including anthracyclines (94% vs. 66%, respectively; $p = 0.01$), had more complete surgery (R0 vs. R1/R2; 65.4% vs. 31.8%, $p = 0.007$) and received more frequently RT (71% vs. 41%, $p = 0.02$) than patients with “BCOR rearranged sarcomas” (Table 3).

3.4 | Outcome

Median follow-up of the complete cohort was 47.1 months (range, 0.3–229.9), CI 95% [30.8–66.0].

TABLE 1 Clinical characteristics of the population with CIC/BCOR rearranged sarcomas.

Thirty-two events occurred after a median delay of 8.2 months (range, 0.5–115): local progressive disease ($n = 5$), local relapse ($n = 8$), metastatic progressive disease ($n = 10$), metastatic relapse ($n = 7$), and combined progressive disease ($n = 2$). All deaths were due to tumor progression, but one patient had a chemotherapy-related death. Among the 45 patients with initially localized disease, 30 (67%) patients were alive at the end of follow-up: in CR ($n = 22$), with PR ($n = 3$), on treatment ($n = 2$) and with PD ($n = 1$) (tumor status unspecified, $n = 2$). Among the 15 patients with metastatic disease, seven patients (47%) were still alive: in CR ($n = 5$), in PR ($n = 1$) and on therapy ($n = 1$). Overall, the 3 year-EFS were 44.0% (95% CI 28.7–67.5) and 41.2% (95% CI 25.4–67.0) for “CIC fused sarcoma” and “BCOR rearranged

TABLE 2 Tumor characteristics.

| | CIC tumors group N = 31 | BCOR tumors group N = 29 |
|---|-------------------------|--------------------------|
| Initial pathologic diagnosis | | |
| Undifferentiated small round cells sarcoma | 13 | 6 |
| Other undifferentiated sarcoma | 5 | 9 |
| Ewing-like sarcoma | 9 | 4 |
| MPNST | 1 | – |
| Primitive myxoid mesenchymal tumor of infancy | 1 | 1 |
| Malignant sarcomatoid tumor | – | 1 |
| Adamantinoma | 1 | – |
| Angiosarcoma | – | 4 |
| Congenital fibrosarcoma | – | 1 |
| Synovial sarcoma | – | 1 |
| Clear cell sarcoma | 1 | – |
| Germ cell tumor | – | 2 |
| Pathology findings | | |
| Necrosis | | |
| Presence | 23 | 5 |
| Absence | 2 | 10 |
| Not mentioned | 6 | 14 |
| Mitotic rate | | |
| High | 17 | 8 |
| Intermediate/low | 5 | 1 |
| Not done | 9 | 20 |
| Immunohistochemistry | | |
| Nuclear CD99 staining | | |
| Strong | 9 | 3 |
| Absence | 17 | 13 |
| Not done | 5 | 13 |
| Cytoplasmic CD99 staining | | |
| Strong | 14 | 10 |
| Absence | 12 | 6 |
| Not done | 5 | 13 |
| BCOR expression | | |
| Presence | 0 | 6 |
| Absence | 11 | 6 ^a |
| Not done | 20 | 17 |
| Cyclin D1 expression | | |
| Presence | | 2 |
| Absence | | 4 |
| Not done | | 23 |
| Vimentin expression | | |
| Strong | 9 | 3 |
| Absence | – | 3 |
| Not done | 22 | 23 |

(Continues)

TABLE 2 (Continued)

| | CIC tumors group N = 31 | BCOR tumors group N = 29 |
|---------------------------------|-------------------------|--------------------------|
| Molecular analysis ^a | | |
| FISH | 8 | 6 |
| RT-PCR/dd PCR | 14 | 4 |
| RNA seq | 5 | 6 |
| NGS | 3 | 1 |
| Methylation profile | 2 | 1 |
| Unknown | 1 | 12 |
| Type of molecular rearrangement | 22 <i>CIC::DUX4</i> | 18 <i>BCOR::CCNB3</i> |
| | 7 CIC break (FISH) | 7 <i>BCOR-ITD</i> |
| | 2 <i>ATXN1::NUTM1</i> | 3 <i>YWHAE::NUTM2B</i> |
| | | 1 <i>MAML::BCOR</i> |

Abbreviations: FISH, fluorescence in situ hybridization; N, number; NGS, next-generation sequencing; RNA seq, RNA sequencing; RT-PCR, reverse transcriptase polymerase chain reaction; RT-PCR dd, reverse transcription polymerase chain reaction droplet digital.

^a4 *BCOR::CCNB3*, 1 *BCOR-ITD* and 1 *YWHAE::NUTM2B*.

sarcoma” groups, respectively ($p = 0.97$). Three-year OS were 46.3% (95% CI 29.6–72.4) and 67.1% (95% CI 50.4–89.3; $p = 0.24$), respectively. There was no significant difference of the 3-year EFS and OS between the two groups (Figures 1 and 2).

3.5 | Statistical analysis and prognostic factors

In term of clinical characteristics, age >13 years was the only clinical factor significantly associated with a better EFS in univariate and multivariate analysis (Table 4). Notably, these risk factors were only present in BCOR/YWHA tumors ($p = 0.012$) and not in CIC sarcomas ($p = 0.84$). Presence of metastases was the only factor significantly associated with a worse OS in univariate and multivariate analysis (Table 5; Figures S1 and S2). Males showed a significantly better OS in univariate analysis but not after adjustment for other risk factors (Table S3A,B).

4 | DISCUSSION

We reported the first clinical data of a European cohort of young patients with the novel genetically defined “CIC fused sarcomas” and “BCOR rearranged sarcomas” in soft tissues.

“CIC fused sarcomas” were described in a cohort of 115 patients as often found in soft tissue sarcoma (86%) and mainly occurring in adults (median age 32 years).^{9,22} This analysis includes data on children, adolescents and young

adults. The definition of young adults (AYA) varies and mostly includes patients up to 24 years. However, inclusion of data of older patients in cooperation with the adult oncologists are undoubtedly needed to get an overview on a larger cohort concerning age and this data do not reflect the overall age at diagnosis.

In our study, “CIC fused” STS were mainly located in the trunk and are often presenting with metastatic disease.²⁹ In contrast, “BCOR rearranged sarcomas” are described as occurring more frequently in bone (64%) and in pediatric patients (76%)³⁰: *BCOR::CCNB* was described more often in adolescents in contrast to *BCOR-ITD*, more frequently occurring in infants.^{30–32} In our study, we cannot demonstrate any difference in the age of occurrence comparing *BCOR::CCNB* to other genetic alterations as *BCOR-ITD* or the *YWHAE* alteration in contrast to data referring to all locations.³¹

Our cohort of patients harboring the *BCOR* rearrangement frequently had localized tumor, located in limbs and significantly younger at diagnosis than patients with “CIC fused” STS, confirming observations including locations in bone.³⁰ Interestingly, we confirm that age was a significant factor for EFS, especially for BCOR/YWHA tumors, but not the biological entity itself. The precise reason to explain this difference is not totally clear. However, as this finding was only present in BCOR/YWHA sarcomas, one hypothesis could be that, in some way, therapy differences may influence the outcome of patients. Patients with BCOR tumors are more frequently younger and may have receive different therapy (i.e., less radiotherapy for instance) that may explain such difference.

TABLE 3 Summary of delivered therapy.

| | CIC tumors group N = 31 | BCOR tumors group N = 29 | Total N = 60 | p value |
|---|----------------------------|--------------------------------|-----------------|---------------|
| Local treatment | | | | 0.04 |
| Surgery alone | 7 | 15 | 22 | |
| Radiation alone | 3 | 3 | 6 | |
| Both | 19 | 9 | 28 | |
| None ^c | 2 | 2 | 4 | |
| Primary tumor resection | | | | 1 |
| No | 5 | 5 | 10 | |
| Yes | 26 | 24 | 50 | |
| Best tumor resection | | | | 0.007 |
| R0 | 17 | 7 | 24 | |
| R1 | 4 | 16 | 17 | |
| R2 | 5 | 2 | 7 | |
| NA | 5 | 7 | 12 | |
| Chemotherapy regimens | | | | |
| Anthracyclines based ^a | 29 | 19 | 48 | 0.011 |
| Platinum based ^a | 3 | 3 | 6 | 1 |
| High dose ^b | 2 | 3 | 5 | 1 |
| Maintenance therapy | 5 | 3 | 8 | 0.75 |
| Overall chemotherapy regimen | | | | Not performed |
| According to Ewing protocols (VDCy-IE/VIDE + VAI) | 13 | 6 | 19 | |
| According to RMS-NRSTS protocols (IVA/VAC, VAIA, IVADo, Ifo-doxo) | 15 | 17 | 32 | |
| Other regimens | 3 | 3 | 6 | |
| None | – | 3 | 3 | |
| Radiotherapy | | | | 0.021 |
| No | 9 | 17 | 26 | |
| Yes | 22 | 12 | 34 | |

Abbreviations: IE, ifosfamide-etoposide; Ifo-doxo, ifosfamide-doxorubicin; N, number; NA, not available; R0, complete resection; R1, microscopic incomplete resection; R2, macroscopic residue; Rx, data not available; VAC, vincristine-D actinomycin-cyclophosphamide; VAI/IVA, vincristine-D actinomycin-ifosfamide; VAIA, IVADo, IVA with doxorubicin; VDCy, vincristine-doxorubicin-cyclophosphamide; VIDE, vincristine-ifosfamide-doxorubicin-etoposide.

^aOne missing data.

^b2 missing data.

^c1 toxic death, 3 early progressive disease.

These different genetic alterations seem to have a prognostic impact as patients with *BCOR* altered tumors are reported to have an overall poor prognosis. *BCOR::CCNB3* fused tumors are reported to have a 5-year OS of 68%, in contrast to patients with *BCOR-ITD* or *ZC3H7B::BCOR* tumors that have low survival rates, with more than 50% of patients in each group dying of

relapse of their disease.³¹ In our experience we report a much higher number of IRS group IV tumors in the “*CIC* fused sarcomas” and only two in the “*BCOR* rearranged sarcomas” at diagnosis. Yet, the EFS of “*BCOR* rearranged sarcomas” as a group is lower than that of the “*CIC* fused sarcoma” group. This suggests that effective therapy was likely not delivered due to the younger

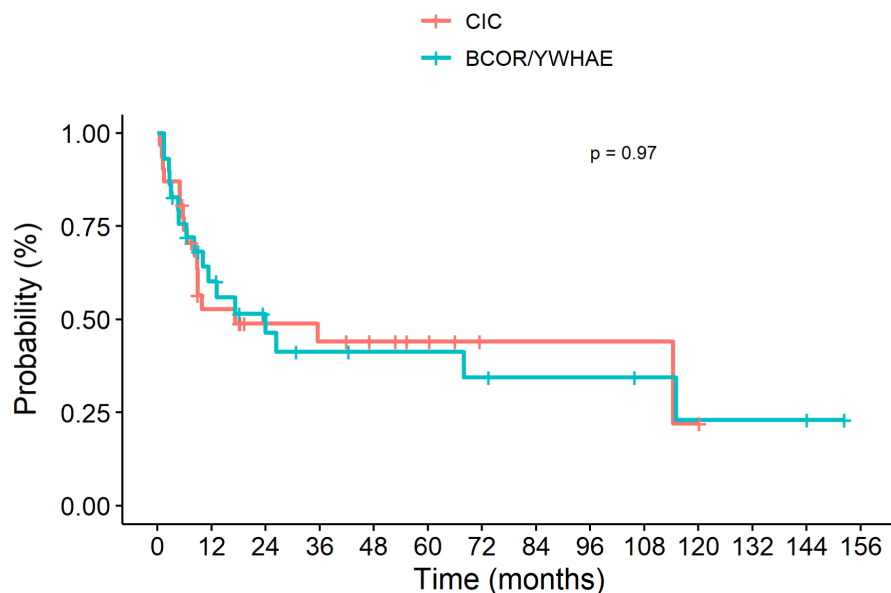


FIGURE 1 Kaplan-Meier estimates presenting EFS of 60 patients with CIC-fused sarcoma ($n=31$) and BCOR rearranged sarcoma ($n=29$).

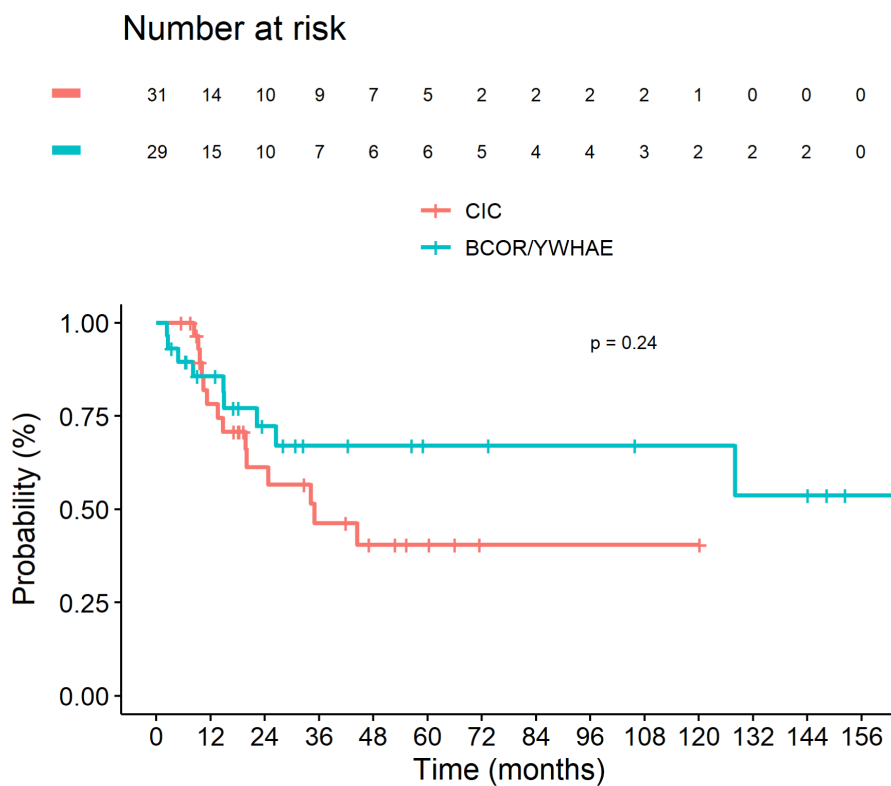


FIGURE 2 Kaplan-Meier estimates presenting OS of 60 patients with CIC-fused sarcoma ($n=31$) and BCOR rearranged sarcoma ($n=29$).

Number at risk

| | | | | | | | | | | | | | |
|---|----|----|----|----|---|---|---|---|---|---|---|---|---|
| — | 31 | 21 | 13 | 9 | 6 | 4 | 1 | 1 | 1 | 1 | 0 | 0 | 0 |
| — | 29 | 21 | 14 | 10 | 9 | 7 | 7 | 6 | 6 | 5 | 5 | 4 | 4 |

age in the “*BCOR* rearranged sarcoma” group and also probably explains the higher salvage rate at relapse given the better overall survival compared to that seen in the “*CIC* fused sarcoma” group.

We recommend imaging guidelines developed for rhabdomyosarcoma as specific guidelines for *CIC* and *BCOR* sarcoma need to be developed.³³ The initial extent

of the disease and the patients age at the time of diagnosis might be responsible for the inhomogeneous treatment.³⁴ The outcome of these patients is unsatisfactory with a 3-year OS of 46.3% and 67.1%, respectively, but not statistically different ($p=0.24$). These data correlate to the rare published data on these patient groups including bone primary: 5-year OS 43% for “*CIC* fused sarcoma” and 72%

TABLE 4 Risk factors in univariate and multivariate analysis for event-free survival for the population with CIC and BCOR sarcomas.

| Risk factors | Number of patients | Univariate | | | | Multivariate | | |
|-----------------|--------------------|-------------------|------|--------------|---------|--------------|--------------|---------|
| | | 3y-EFS % (95% CI) | HR | 95% CI | p value | HR | 95% CI | p value |
| Tumor type | | | | | 0.98 | | | 0.94 |
| CIC-fused | 31 | 44.0 (28.7–67.5) | 1 | [0.50; 1.95] | | 1 | | |
| BCOR rearranged | 29 | 41.2 (25.4–67.0) | 0.99 | | | 1.03 | [0.44; 2.42] | |
| Median age | | | | | 0.06 | | | 0.04 |
| <13 yo | 30 | 33.5 (18.8–59.9) | 1 | | | 1 | | |
| >13 yo | 30 | 51.9 (35.9–75.2) | 0.52 | [0.26; 1.03] | | 0.45 | [0.21; 0.95] | |
| Gender | | | | | 0.84 | | | – |
| Female | 26 | 43.2 (26.1–71.4) | 1 | | | NI | – | |
| Male | 34 | 41.7 (27.1–64.3) | 0.93 | [0.47; 1.84] | | | | |
| Tumor site | | | | | 0.50 | | | – |
| Head and neck | 10 | 40.0 (18.7–85.5) | 1 | | | NI | – | |
| Limbs | 18 | 36.1 (17.7–73.7) | 0.62 | [0.24; 1.65] | | | | |
| Others | 32 | 47.1 (31.5–70.6) | 0.58 | [0.24; 1.41] | | | | |
| Tumor size | | | | | 0.61 | | | – |
| ≤5 cm | 16 | 57.4 (36.2–91.1) | 1 | | | NI | – | |
| >5 cm | 42 | 40.6 (27.4–60.2) | 1.23 | [0.55; 2.75] | | | | |
| T status | | | | | 0.321 | | | – |
| T1 | 21 | 46.3 (26.4–81.2) | 1 | | | NI | – | |
| T2 | 39 | 40.5 (27.1–60.5) | 1.46 | [0.68; 3.13] | | | | |
| N status | | | | | 0.28 | | | – |
| N0 | 51 | 46.1 (33.4–63.6) | 1 | | | NI | – | |
| N1 | 6 | 50.0 (22.5–100.0) | 0.92 | [0.28; 3.07] | | | | |
| Nx | 3 | 33.3 (6.7–100.0) | 3.05 | [0.92; 10.1] | | | | |
| M status | | | | | 0.21 | | | 0.12 |
| M0 | 45 | 46.6 (32.8–66.2) | 1 | | | 1 | | |
| M1 | 15 | 29.3 (12.9–66.5) | 1.64 | [0.78; 3.41] | | 2.06 | [0.83; 5.09] | |
| IRS stage | | | | | 0.45 | | | – |
| IRS I–II | 10 | 43.8 (20.0–95.7) | 1 | | | NI | – | |
| IRS III | 35 | 47.1 (31.6–70.1) | 1.10 | [0.41; 2.96] | | | | |
| IRS IV | 15 | 29.3 (12.9–66.5) | 1.76 | [0.60; 5.19] | | | | |

Abbreviations: EFS, event free survival; 95% CI, 95% confidential intervals; HR, Hazard Ratio; yo, year old; IRS-I, complete resection; IRS-II, microscopic incomplete resection; IRS-III, macroscopic residue; IRS-IV, presence of distant metastasis; T, tumor; T1, tumor localized to tissue/organ of origin; T2, tumor beyond tissue/organ of origin; yo, year old; N0, absence of nodal involvement; N1, presence of nodal involvement; Nx, data not specified; M0, localized tumor; M1, presence of distant metastasis.

for “*BCOR* rearranged sarcoma”.^{22,35} As in other STS, metastatic status was a clear prognostic factor for OS.

We are able to contribute detailed data on CHT and local treatment: Patients of both entities were more likely to be treated in Europe according to an STS protocol as (non-) rhabdomyosarcoma, rather than an Ewing one. However, the main drugs are similar in these protocols and the main difference lies on the total number of CHT courses. Multimodal strategy seems important but larger cohort are needed to evaluate the value of each therapy in such patients.

The main weaknesses of these data are their retrospective character, extracted from different databases or centers. As a limitation, the timing of the testing could not be evaluated. However, as patients are included diagnosed before 2015, few patients were included with the molecular diagnosis made some years after initial histologic diagnosis. The frequency of these biologically distinct cancers is extremely rare. Considering CWS patients from the European countries Germany, Switzerland, Austria, Poland, Sweden, and Finland, 11 patients with *CIC*-fused/

TABLE 5 Risk factors in univariate and multivariate analysis for overall survival for the population with CIC and BCOR sarcomas.

| Risk factors | Number of patients | Univariate | | | | Multivariate | | |
|-----------------|--------------------|-------------------|------|--------------|---------|--------------|--------------|---------|
| | | 3y-OS % (95% CI) | HR | 95% CI | p value | HR | 95% CI | p value |
| Tumor type | | | | | 0.23 | | | 0.72 |
| CIC-fused | 31 | 46.3 (29.6–72.4) | 1 | | | 1 | | |
| BCOR rearranged | 29 | 67.1 (50.4–89.3) | 0.59 | [0.25; 1.42] | | 1.23 | [0.39; 3.92] | |
| Median age | | | | | 0.92 | | | – |
| <13 yo | 30 | 49.8 (30.0–82.0) | 1 | | | NI | – | |
| >13 yo | 30 | 57.2 (40.8–80.1) | 0.96 | [0.42; 2.18] | | | | |
| Gender | | | | | 0.24 | | | 0.16 |
| Female | 26 | 45.0 (26.1–77.3) | 1 | | | 1 | | |
| Male | 34 | 62.8 (47.2–83.4) | 0.61 | [0.27; 1.40] | | 0.52 | [0.21; 1.31] | |
| Tumor site | | | | | 0.67 | | | – |
| Head and neck | 10 | 61.7 (34.9–100.0) | 1 | | | NI | – | |
| Limbs | 18 | 61.0 (40.6–91.7) | 1.22 | [0.31; 4.73] | | | | |
| Others | 32 | 52.2 (35.1–77.5) | 1.63 | [0.46; 5.73] | | | | |
| Tumor size | | | | | 0.63 | | | – |
| ≤5 cm | 16 | 44.2 (21.1–92.8) | 1 | | | NI | – | |
| >5 cm | 42 | 57.4 (42.8–77.1) | 0.80 | [0.33; 1.96] | | | | |
| T status | | | | | 0.24 | | | 0.53 |
| T1 | 21 | 76.2 (58.1–99.9) | 1 | | | 1 | | |
| T2 | 39 | 47.2 (32.3–69.0) | 1.77 | [0.65; 4.77] | | 1.39 | [0.50; 3.88] | |
| N status | | | | | 0.88 | | | – |
| N0 | 51 | 57.4 (43.8–75.1) | 1 | | | NI | – | |
| N1 | 6 | 26.7 (5.1–100.0) | 1.37 | [0.40; 4.66] | | | | |
| Nx | 3 | 100 (100–100.0) | 0.88 | [0.12; 6.63] | | | | |
| M status | | | | | 0.04 | | | 0.07 |
| M0 | 45 | 62.4 (47.7–81.7) | 1 | | | 1 | | |
| M1 | 15 | 35.0 (15.5–78.8) | 2.59 | [1.08; 6.22] | | 2.88 | [0.93; 8.97] | |
| IRS stage | | | | | 0.07 | | | – |
| IRS I–II | 10 | 87.5 (67.3–100.0) | 1 | | | NI* | – | |
| IRS III | 35 | 55.5 (38.9–79.1) | 2.10 | [0.47; 9.33] | | | | |
| IRS IV | 15 | 35.0 (15.5–78.8) | 4.74 | [1.01; 22.5] | | | | |

Abbreviations: CI, confidence interval; CT, chemotherapy; HR, hazard ratio; IRS, Intergroup Rhabdomyosarcoma Staging; M, metastasis; N, node; NI*, not introduced in multivariate model since IRS stage IV was equivalent to M1 status; NI, not introduced in multivariate model; R0, localized complete resection (IRS-I); R1, microscopic incomplete resection (IRS-II); R2, macroscopic residue (IRS III); Rx, data not available; T, tumor; yo, year old.

BCOR rearranged STS of the total cohort of 247 patients with the histologic diagnosis of USRCC/UDS/ES of STS irrespective of the molecular diagnosis were registered in the European CWS studies and the STS registry SoTiSaR in this time. As further limitation we are not able to report on numbers of patients with “CIC fused sarcoma” and “BCOR rearranged sarcoma” in bone, kidney, and CNS from all the institutions. To get a sense of the frequency and clinical data of these biologically distinct cancers larger international retrospective studies including studies and registries of bone, kidney, and CNS are necessary.

An international common strategy based on the somatic genetic background is undoubtedly required and a new international risk stratification considering the overall unfavorable prognostic of these entities needs to be built up.

These data also stress the need to perform additional molecular testing in case of any tumor with Ewing characteristics that do not harbor the canonic EWS fusion transcript.³⁶ Tumor genomic sequencing and assignment of genotype-based groups should be incorporated to help understanding of different clinical outcomes.³⁷ Finally, new treatment options need to be developed. Since some

of them start to seem promising, international collaborations, to develop trials including new treatment strategies, are of highest importance in these rare diseases.^{38,39} Applying a distinctive signature of 537 deregulated genes in CIC-rearranged sarcoma with RNA seq, Palmirini et al. in a recent paper showed that the *CIC::DUX4* transcriptional profile compared that of ES was enriched in gene sets including *DUSP4*, *ETV1/4*, *IGF2*, and *IGF2BPs*, *PTX 1* and *3* that are associated with activity of irinotecan, proteasome inhibitors (bortezomib and MG262), and histone deacetylase inhibitors (scriptaid and vorinostat).⁴⁰ Future common analyses on patients with these rare diseases occurring in bone and soft tissue sarcoma are needed to better compare different treatment regimen, to define prognostic factors and to develop new treatment strategies.

AUTHOR CONTRIBUTIONS

Monika Sparber-Sauer: Conceptualization (lead); data curation (equal); formal analysis (equal); resources (equal); validation (equal); writing – original draft (equal); writing – review and editing (lead). **Nadege Corradini:** Resources (equal); visualization (equal); writing – original draft (equal); writing – review and editing (equal). **Maria Carmen Affinita:** Resources (equal); writing – original draft (equal); writing – review and editing (equal). **Giuseppe Maria Milano:** Resources (equal); writing – original draft (equal); writing – review and editing (equal). **Gaëlle Pierron:** Formal analysis (equal); methodology (equal); resources (equal); writing – original draft (equal); writing – review and editing (equal). **Matthieu Carton:** Data curation (lead); formal analysis (lead); methodology (lead); resources (equal); software (equal); supervision (equal); validation (equal); writing – original draft (equal); writing – review and editing (equal). **Franck Tirode:** Resources (equal); visualization (equal); writing – original draft (equal); writing – review and editing (equal). **Daniel Pissaloux:** Resources (equal); writing – original draft (equal); writing – review and editing (equal). **Rita Alaggio:** Resources (equal); validation (equal); writing – review and editing (equal). **Christian Vokuhl:** Resources (equal); validation (equal); writing – review and editing (equal). **Gianni Bisogno:** Resources (equal); validation (equal); writing – review and editing (equal). **Pablo Berlanga:** Resources (equal); validation (equal); writing – review and editing (equal). **Andrea Ferrari:** Conceptualization (equal); data curation (equal); methodology (equal); project administration (equal); resources (equal); validation (equal); visualization (equal); writing – review and editing (equal). **Daniel Orbach:** Conceptualization (lead); data curation (lead); formal analysis (lead); funding acquisition (lead); investigation (equal); methodology (equal); project administration (equal); resources (equal); supervision (lead); validation

(equal); visualization (equal); writing – original draft (lead); writing – review and editing (lead).

ACKNOWLEDGMENTS

Authors gratefully thank parents who allow sharing their children's clinical data, and specifically the French GSF-GETO group, and are very grateful for the continuous cooperation of the contributing hospitals. This work could not have been done without the excellent data management of all persons involved.

FUNDING INFORMATION

The Soft Tissue Sarcoma Registry (SoTiSaR) was supported by the Deutsche Kinderkrebsstiftung, Bonn, Germany, grant no. A2007/13DKS2009.08 and by the Foerderkreis Krebskranke Kinder Stuttgart, Germany. The data collection of Padua has been supported by Fondazione Città della Speranza, Padova, Italy. The authors wish to thank S Wisna for the financial help.

CONFLICT OF INTEREST STATEMENT

The authors declare that they have no known competing financial interests or personal relationships that could have appeared to influence the work reported in this paper.

DATA AVAILABILITY STATEMENT

Not applicable.

CONSENT STATEMENT

Informed consent has been obtained from all CWS and participating patients and/or their parents/guardians according to the legal requirements.

ORCID

Monika Sparber-Sauer  <https://orcid.org/0000-0001-9551-2399>

[org/0000-0001-9551-2399](https://orcid.org/0000-0001-9551-2399)

Maria Carmen Affinita  <https://orcid.org/0000-0003-1680-0240>

[org/0000-0003-1680-0240](https://orcid.org/0000-0003-1680-0240)

Matthieu Carton  <https://orcid.org/0000-0002-6793-3273>

[org/0000-0002-6793-3273](https://orcid.org/0000-0002-6793-3273)

Daniel Orbach  <https://orcid.org/0000-0002-2520-139X>

REFERENCES

- Gajdzis P, Pierron G, Klijanienko J. Cytology of undifferentiated round-cell sarcomas of bone and soft tissue: Ewing sarcoma or not Ewing sarcoma, that is the question. *Acta Cytol.* 2022;66(4):295-306.
- Yoshimoto T, Tanaka M, Homme M, et al. CIC-DUX4 induces small round cell sarcomas distinct from Ewing sarcoma. *Cancer Res.* 2017;77(11):2927-2937.
- Brčić I, Brodowicz T, Cerroni L, et al. Undifferentiated round cell sarcomas with CIC-DUX4 gene fusion: expanding the clinical spectrum. *Pathology.* 2020;52(2):236-242.

4. Machado I, Navarro S, Llombart-Bosch A. Ewing sarcoma and the new emerging Ewing-like sarcomas: (CIC and BCOR-rearranged-sarcomas). A systematic review. *Histol Histopathol*. 2016;31(11):1169-1181.
5. Cidre-Aranaz F, Watson S, Amatruda JF, et al. Small round cell sarcomas. *Nat Rev Dis Primers*. 2022;8(1):66.
6. Watson S, Perrin V, Guillemot D, et al. Transcriptomic definition of molecular subgroups of small round cell sarcomas. *J Pathol*. 2018;245(1):29-40.
7. Kallen ME, Hornick JL. From the ashes of "Ewing-like" sarcoma: a contemporary update of the classification, immunohistochemistry, and molecular genetics of round cell sarcomas. *Semin Diagn Pathol*. 2022;39(1):29-37.
8. Watabe S, Kikuchi Y, Mukaiyama J, et al. Cytological features of BCOR-CCNB3 sarcoma: comparison with Ewing sarcoma and synovial sarcoma. *Cytopathology*. 2021;32(6):771-778.
9. Gambarotti M, Benini S, Gamberi G, et al. CIC-DUX4 fusion-positive round-cell sarcomas of soft tissue and bone: a single-institution morphological and molecular analysis of seven cases. *Histopathology*. 2016;69(4):624-634.
10. Yamada Y, Kuda M, Kohashi K, et al. Histological and immunohistochemical characteristics of undifferentiated small round cell sarcomas associated with CIC-DUX4 and BCOR-CCNB3 fusion genes. *Virchows Arch*. 2017;470(4):373-380.
11. Pierron G, Tirode F, Lucchesi C, et al. A new subtype of bone sarcoma defined by BCOR-CCNB3 gene fusion. *Nat Genet*. 2012;44(4):461-466.
12. Malik F, Zreik RT, Hedges DJ, et al. Primary bone sarcoma with BCOR internal tandem duplication. *Virchows Arch*. 2020;476(6):915-920.
13. Argani P, Kao YC, Zhang L, et al. Primary renal sarcomas with BCOR-CCNB3 gene fusion: a report of 2 cases showing histologic overlap with clear cell sarcoma of kidney, suggesting further link between BCOR-related sarcomas of the kidney and soft tissues. *Am J Surg Pathol*. 2017;41(12):1702-1712.
14. Lin DI, Huang RSP, Mata DA, et al. Clinicopathological and genomic characterization of BCORL1-driven high-grade endometrial stromal sarcomas. *Mod Pathol*. 2021;34(12):2200-2210.
15. Zou Y, Turashvili G, Soslow RA, et al. High-grade transformation of low-grade endometrial stromal sarcomas lacking YWHAE and BCOR genetic abnormalities. *Mod Pathol*. 2020;33(9):1861-1870.
16. Cramer SL, Li R, Ali S, Bradley JA, Kim HK, Pressey JG. Successful treatment of recurrent primitive myxoid mesenchymal tumor of infancy with BCOR internal tandem duplication. *J Natl Compr Canc Netw*. 2017;15(7):868-871.
17. Santiago T, Clay MR, Allen SJ, Orr BA. Recurrent BCOR internal tandem duplication and BCOR or BCL6 expression distinguish primitive myxoid mesenchymal tumor of infancy from congenital infantile fibrosarcoma. *Mod Pathol*. 2017;30(6):884-891.
18. Bouchoucha Y, Tauziède-Espariat A, Gauthier A, et al. Intra- and extra-cranial BCOR-ITD tumours are separate entities within the BCOR-rearranged family. *J Pathol Clin Res*. 2022;8(3):217-232.
19. Graham C, Chilton-MacNeill S, Zielenska M, Somers GR. The CIC-DUX4 fusion transcript is present in a subgroup of pediatric primitive round cell sarcomas. *Hum Pathol*. 2012;43(2):180-189.
20. Koelsche C, Schimpf D, Stichel D, et al. Sarcoma classification by DNA methylation profiling. *Nat Commun*. 2021;12(1):498.
21. Brahmi M, Gaspar N, Gantzer J, et al. Patterns of care and outcome of CIC-rearranged sarcoma patients: a nationwide study of the French sarcoma group. *Cancer Med*. 2022;12:7801-7807.
22. Antonescu CR, Owosho AA, Zhang L, et al. Sarcomas with CIC-rearrangements are a distinct pathologic entity with aggressive outcome: a clinicopathologic and molecular study of 115 cases. *Am J Surg Pathol*. 2017;41(7):941-949.
23. Rodary C, Flamant F, Donaldson SS. An attempt to use a common staging system in rhabdomyosarcoma: a report of an international workshop initiated by the International Society of Pediatric Oncology (SIOP). *Med Pediatr Oncol*. 1989;17(3):210-215.
24. Crist W, Gehan EA, Ragab AH, et al. The third intergroup rhabdomyosarcoma study. *J Clin Oncol*. 1995;13(3):610-630.
25. Therasse P, Arbuck SG, Eisenhauer EA, et al. New guidelines to evaluate the response to treatment in solid tumors. European Organization for Research and Treatment of cancer, National Cancer Institute of the United States, National Cancer Institute of Canada. *J Natl Cancer Inst*. 2000;92(3):205-216.
26. Hermanek P, Wittekind C. The pathologist and the residual tumor (R) classification. *Pathol Res Pract*. 1994;190(2):115-123.
27. Dantonello TM, Int-Veen C, Harms D, et al. Cooperative trial CWS-91 for localized soft tissue sarcoma in children, adolescents, and young adults. *J Clin Oncol*. 2009;27(9):1446-1455.
28. Bisogno G, de Salvo GL, Bergeron C, et al. Vinorelbine and continuous low-dose cyclophosphamide as maintenance chemotherapy in patients with high-risk rhabdomyosarcoma (RMS 2005): a multicentre, open-label, randomised, phase 3 trial. *Lancet Oncol*. 2019;20(11):1566-1575.
29. Haidar A, Arekapudi S, DeMattia F, Abu-Isa E, Kraut M. High-grade undifferentiated small round cell sarcoma with t(4;19) (q35;q13.1) CIC-DUX4 fusion: emerging entities of soft tissue tumors with unique histopathologic features—a case report and literature review. *Am J Case Rep*. 2015;16:87-94.
30. Kao YC, Owosho AA, Sung YS, et al. BCOR-CCNB3 fusion positive sarcomas: a clinicopathologic and molecular analysis of 36 cases with comparison to morphologic Spectrum and clinical behavior of other round cell sarcomas. *Am J Surg Pathol*. 2018;42(5):604-615.
31. Whittle SB, Fetzko S, Roy A, Venkatramani R. Soft tissue and visceral organ sarcomas with BCOR alterations. *J Pediatr Hematol Oncol*. 2022;44(5):195-200.
32. Antonescu CR, Kao YC, Xu B, et al. Undifferentiated round cell sarcoma with BCOR internal tandem duplications (ITD) or YWHAE fusions: a clinicopathologic and molecular study. *Mod Pathol*. 2020;33(9):1669-1677.
33. van Ewijk R, Schoot RA, Sparber-Sauer M, et al. European guideline for imaging in paediatric and adolescent rhabdomyosarcoma – joint statement by the European Paediatric soft tissue sarcoma study group, the cooperative Weichteilsarkom Studiengruppe and the oncology task force of the European society of Paediatric radiology. *Pediatr Radiol*. 2021;51(10):1940-1951.
34. Orbach D, Sarnacki S, Brisse HJ, et al. Neonatal cancer. *Lancet Oncol*. 2013;14(13):e609-e620.
35. Grünwald TGP, Cidre-Aranaz F, Surdez D, et al. Ewing sarcoma. *Nat Rev Dis Primers*. 2018;4(1):5.
36. Cohen-Gogo S, Cellier C, Coindre JM, et al. Ewing-like sarcomas with BCOR-CCNB3 fusion transcript: a clinical, radiological and pathological retrospective study from the Societe

- Francaise des Cancers de L'Enfant. *Pediatr Blood Cancer*. 2014;61(12):2191-2198.
37. Koelsche C, Hartmann W, Schrimpf D, et al. Array-based DNA-methylation profiling in sarcomas with small blue round cell histology provides valuable diagnostic information. *Mod Pathol*. 2018;31(8):1246-1256.
38. He J, Xu Y, Ni X, Zhang D, Zhao J. Case report: an adolescent soft tissue sarcoma with YWHAE-NUTM2B fusion is effectively treated with combined therapy of Epirubicin and Anlotinib. *Front Oncol*. 2022;12:905994.
39. Bosnakovski D, Ener ET, Cooper MS, et al. Inactivation of the CIC-DUX4 oncogene through P300/CBP inhibition, a therapeutic approach for CIC-DUX4 sarcoma. *Oncogenesis*. 2021;10(10):68.
40. Palmerini E, Gambarotti M, Italiano A, et al. A global collaborative study of CIC-rearranged, BCOR::CCNB3-rearranged and other ultra-rare unclassified undifferentiated small round cell sarcomas (GRACeFU). *Eur J Cancer*. 2023;183:11-23.

SUPPORTING INFORMATION

Additional supporting information can be found online in the Supporting Information section at the end of this article.

How to cite this article: Sparber-Sauer M, Corradini N, Affinita MC, et al. Clinical characteristics and outcomes for children, adolescents and young adults with “CIC-fused” or “BCOR-rearranged” soft tissue sarcomas: A multi-institutional European retrospective analysis. *Cancer Med*. 2023;12:14346-14359. doi:[10.1002/cam4.6113](https://doi.org/10.1002/cam4.6113)