



HAL
open science

Impact of race-independent equations on estimating glomerular filtration rate for the assessment of kidney dysfunction in liver disease

F. Stämmler, L. Derain-Dubourg, S. Lemoine, J. W. Meeusen, S. Dasari, J. C. Lieske, A. Robertson, E. Schiffer

► To cite this version:

F. Stämmler, L. Derain-Dubourg, S. Lemoine, J. W. Meeusen, S. Dasari, et al.. Impact of race-independent equations on estimating glomerular filtration rate for the assessment of kidney dysfunction in liver disease. *BMC Nephrology*, 2023, 24 (1), pp.83. 10.1186/s12882-023-03136-y . inserm-04313584

HAL Id: inserm-04313584

<https://inserm.hal.science/inserm-04313584>

Submitted on 29 Nov 2023

HAL is a multi-disciplinary open access archive for the deposit and dissemination of scientific research documents, whether they are published or not. The documents may come from teaching and research institutions in France or abroad, or from public or private research centers.

L'archive ouverte pluridisciplinaire **HAL**, est destinée au dépôt et à la diffusion de documents scientifiques de niveau recherche, publiés ou non, émanant des établissements d'enseignement et de recherche français ou étrangers, des laboratoires publics ou privés.



Distributed under a Creative Commons Attribution 4.0 International License

RESEARCH

Open Access



Impact of race-independent equations on estimating glomerular filtration rate for the assessment of kidney dysfunction in liver disease

Frank Stämmler^{1†}, Laurence Derain-Dubourg^{2†}, Sandrine Lemoine², Jeffrey W. Meeusen³, Surendra Dasari³, John C. Lieske^{3,4}, Andrew Robertson¹ and Eric Schiffer^{1*}

Abstract

Background Altered hemodynamics in liver disease often results in overestimation of glomerular filtration rate (GFR) by creatinine-based GFR estimating (eGFR) equations. Recently, we have validated a novel eGFR equation based on serum myo-inositol, valine, and creatinine quantified by nuclear magnetic resonance spectroscopy in combination with cystatin C, age and sex (GFR_{NMR}). We hypothesized that GFR_{NMR} could improve chronic kidney disease (CKD) classification in the setting of liver disease.

Results We conducted a retrospective multicenter study in 205 patients with chronic liver disease (CLD), comparing the performance of GFR_{NMR} to that of validated CKD-EPI eGFR equations, including eGFR_{cr} (based on creatinine) and eGFR_{cr-cys} (based on both creatinine and cystatin C), using measured GFR as reference standard. GFR_{NMR} outperformed all other equations with a low overall median bias (-1 vs. -6 to 4 ml/min/1.73 m² for the other equations; $p < 0.05$) and the lowest difference in bias between reduced and preserved liver function (-3 vs. -16 to -8 ml/min/1.73 m² for other equations). Concordant classification by CKD stage was highest for GFR_{NMR} (59% vs. 48% to 53%) and less biased in estimating CKD severity compared to the other equations. GFR_{NMR} P30 accuracy (83%) was higher than that of eGFR_{cr} (75%; $p = 0.019$) and comparable to that of eGFR_{cr-cys} (86%; $p = 0.578$).

Conclusions Addition of myo-inositol and valine to creatinine and cystatin C in GFR_{NMR} further improved GFR estimation in CLD patients and accurately stratified liver disease patients into CKD stages.

Keywords eGFR, GFR_{NMR}, Creatinine, Cystatin C, Chronic liver disease

[†]Frank Stämmler and Laurence Derain-Dubourg contributed equally to this work.

⁴ Division of Nephrology and Hypertension, Mayo Clinic, Rochester, MN, USA

*Correspondence:

Eric Schiffer
eric.schiffer@numares.com

¹ Department of Research and Development, Numares AG., Am BioPark 9, 93053 Regensburg, Germany

² Department Néphrologie, Dialyse, Hypertension Et Exploration Fonctionnelle Rénale, Groupement Hospitalier Edouard Herriot, Hospices Civils de Lyon, Université Claude Bernard, Lyon 1, Lyon, France

³ Department of Laboratory Medicine and Pathology, Mayo Clinic, Rochester, MN, USA



Introduction

Chronic liver disease (CLD) is commonly associated with impaired kidney function. Renal dysfunction in the context of CLD is a predictor of mortality [1], and also a strong prognostic predictor of orthotopic liver transplantation (OLT) outcomes [2]. The influence of renal dysfunction is so well defined that it is a component of Model of End stage Liver Disease (MELD) prognostic score. Furthermore, the degree of renal dysfunction in CLD has wide-reaching clinical decision implications such as appropriate drug dosing, therapeutic interventions, and suitability for OLT [3, 4]. Most treatments for complications of liver disease, such as nephrotoxic antibiotics, diuretics, and paracentesis, have further negative effects on renal function with the potential to precipitate or aggravate renal failure [5]. An accurate measure of renal function is therefore crucial in patients with CLD.

Tracer-measured glomerular filtration rate (mGFR) is considered the gold standard for determining GFR. However, it is not readily available in most centers. Hence, renal function is estimated using biomarker-based eGFR equations in clinical routine settings. The most current eGFR equations are based on models containing either serum creatinine (cr), cystatin C (cys), or both. The leading examples are the Chronic Kidney Disease Epidemiology Collaboration (CKD-EPI) eGFR equations, which employ creatinine, age (A), sex (S), with or without race (R) [eGFR_{cr}(ASR) or eGFR_{cr}(AS)] or both creatinine and cystatin C [eGFR_{cr-cys}(ASR) or eGFR_{cr-cys}(AS)] [6–8]. Unfortunately, serum creatinine is inaccurate in the diagnosis of renal dysfunction in patients with CLD. Clinical features of this patient population, such as a reduction of total muscle mass, a reduced hepatic conversion of creatine to creatinine due to liver insufficiency, altered hemodynamics in ascites, and an increased tubular secretion rate of creatinine are all likely to account for the failure of serum creatinine levels to increase despite obvious renal disease [9–11]. Additionally, numerous studies have demonstrated the poor performance of creatinine-based eGFR equations in patients with CLD and those being considered for OLT [5, 12, 13].

The alternative biomarker cystatin C, being a non-glycosylated basic protein produced at a constant rate by all nucleated cells, has been introduced to estimate GFR [7]. Unlike creatinine, cystatin C is less influenced by body mass, sex, age, or serum bilirubin, and is mainly influenced by GFR. Therefore, cystatin C is considered to be a superior GFR marker that can provide a more accurate prediction of GFR than creatinine [14]. Also, studies have demonstrated the superiority of estimating GFR using cystatin C in CLD patients compared to creatinine, and particularly the eGFR_{cys}(ASR) for patients with ascites or significant renal disease [15]. Moreover, a recent

meta-analysis in cirrhosis patients indicated that eGFR equations based on both creatinine and cystatin C were less biased than those based on creatinine alone, which overestimate GFR, and cystatin C alone, which tend to underestimate GFR [16].

Recently, an eGFR equation has been developed and validated based on nuclear magnetic resonance (NMR) measurement of serum myo-inositol, valine, and creatinine, in addition to the immunoturbidometric quantification of serum cystatin C, age and sex (GFR_{NMR}) [17, 18]. NMR represents a multiplex analyzer capable to precisely quantify multiple unlabeled metabolites in a simultaneous physical measurement step. In that sense, GFR_{NMR} interprets biomarkers of glomerular filtration rate in combination with biomarkers reflecting CKD associated metabolic comorbidities. In addition, the quantification of serum creatinine in adjunct to serum valine and myo-inositol by NMR limits the complexity of working streams and associated analytical costs in routine laboratory settings compared to multiple single biomarker assays. Upon clinical validation in adults with and without chronic kidney disease (CKD), GFR_{NMR} showed a lower median bias to tracer mGFR and a higher accuracy within 15% of mGFR, compared to the eGFR_{cr}(ASR), eGFR_{cys}(ASR), and eGFR_{cr-cys}(ASR) CKD-EPI equations [17].

Given this noted superior performance of GFR_{NMR} in adults with and without CKD, this multicenter retrospective study sought to compare the performance of GFR_{NMR} with that of CKD-EPI equations based on creatinine only [eGFR_{cr}(ASR), eGFR_{cr}(AS)] or on both creatinine and cystatin C [eGFR_{cr-cys}(ASR), eGFR_{cr-cys}(AS)], against mGFR as reference standard, in 205 patients with CLD.

Patients and methods

Patients and samples

Bio-banked serum samples of adult individuals ≥ 18 years old with CLD were included in this study. These samples were a subset of those described by Stämmler et al. [17], and were selected from patients with CLD within the validation cohort (i.e., not part of the development dataset) [17]. A total of 205 samples were included in this analysis, collected from CLD patients in Rochester, MN, USA ($n = 155$) and Lyon, France ($n = 50$). Samples were stored at $-80\text{ }^{\circ}\text{C}$ and underwent no more than one freeze–thaw cycle before NMR analysis, as previously described [17]. The study was conducted according to the guidelines of the Declarations of Helsinki and Istanbul, and was approved by the relevant Institutional Review Boards (Mayo Clinic IRB# 19–003,513, dated 16 May 2019, and Hospital Edouard Herriot IRB# DC-2012–1615, dated 2 July 2012). All individuals gave informed consent before joining the study.

mGFR, biomarker measurements and eGFR

Measured GFR (mGFR) reference standard was determined using iothalamate (Rochester samples) or inulin (Lyon samples) clearance, as previously described [15, 17]. Serum creatinine was measured using enzymatic methods traceable to the National Institute of Standards and Technology, as described [17]. Serum cystatin C was measured using immunoassays, as explained [17]. NMR-based measurement and quantification of serum creatinine, myo-inositol and valine were conducted as reported [17–19]. For this work we compared the performance of our recently introduced GFR_{NMR} equation [17, 18] to that of the different CKD-EPI eGFR equations: the 2009 creatinine-based CKD-EPI equation [eGFRcr(ASR); [6]], the 2012 creatinine- and cystatin C-based CKD-EPI equation [eGFRcr-cys(ASR); [7]], and the 2021 race-free derivatives of the previous CKD-EPI equations [eGFRcr(AS) and eGFRcr-cys(AS); [8]].

Liver function scoring and definitions

The performance of eGFR equations was evaluated according to liver dysfunction severity. Two levels of liver function, namely ‘preserved liver function’ and ‘reduced liver function’, were defined based on the Child–Pugh (CP) score [20, 21] and the presence or absence of ascites. Preserved liver function was defined by a CP class A without ascites. Reduced liver function was defined by a

CP class A with ascites, or a CP class B or C (regardless of the presence of ascites) (Fig. 1).

CP scores of the Rochester cohort were retrospectively calculated based on available clinical parameters [20, 21]. CP scoring was harmonized across the cohorts. Ascites was considered as either absent or present (‘mild/moderate’ and ‘severe/permanent’ pooled categories). One score point was attributed in the absence of ascites and two points in its presence. In addition, presence, but not severity, of hepatic encephalopathy (HE) was documented at both centers. Therefore, one score point was assigned to samples without HE and two points for samples with HE. In case one out of the five clinical parameters required for CP score calculation was missing, one score point was arbitrarily attributed to the missing parameter to allow calculation of a CP score. In case more than one clinical parameter was missing, samples were excluded from analyses based on liver function, but included in the global performance analyses (Fig. 1).

Other variables

The performance of eGFR equations was also evaluated in terms of correct CKD staging (G1 to G5) [22], using mGFR as reference, in the whole population, in preserved versus reduced liver function subgroups, and according to the following liver and renal dysfunction parameters: (i) the severity of liver dysfunction based on the Model of End-stage Liver Disease (MELD) score [21, 23], with

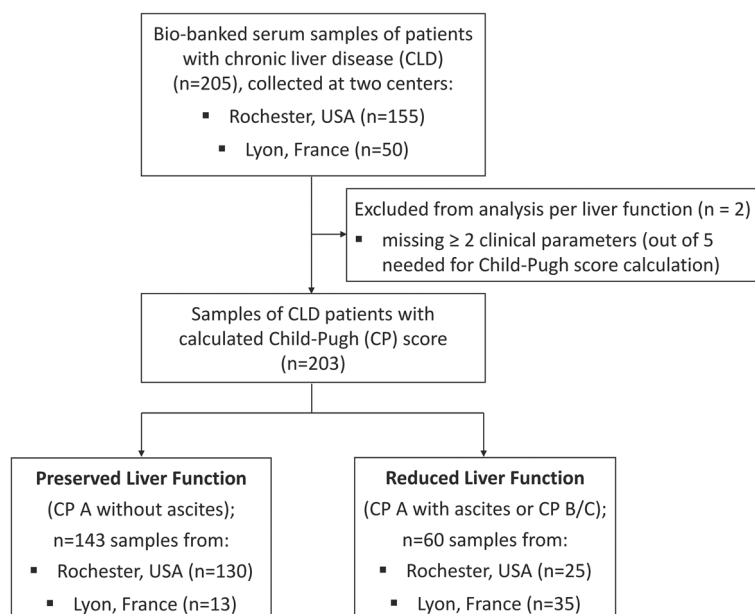


Fig. 1 Study flow diagram. Global performance analyses were conducted on all samples of patients with chronic liver disease (CLD; $n = 205$), while analyses according to liver function were conducted in CLD patients with a calculated Child–Pugh (CP) score ($n = 203$). Out of 203 samples with a CP score, 143 were defined a ‘preserved liver function’ (CP class A without ascites) and 60 were defined a ‘reduced liver function’ (CP class A with ascites, CP class B, or CP class C). The number of samples from the respective centers (Lyon, Rochester) is indicated

a threshold of MELD > 15 for liver dysfunction, (ii) the presence or absence of ascites, and (iii) renal dysfunction ($\text{mGFR} < 60 \text{ ml/min/1.73 m}^2$). Other relevant clinical parameters are listed in Table 1.

Statistical analysis

Data were integrated and prepared according to Stämmli et al. [17]. All calculations, performance evaluation and statistical tests were performed within R 4.0.2 [24]. Most metrics were calculated with *ModelMetrics* (Version 1.2.2.2) [25]. Data structures were handled with *data.table* (Version 1.13.2) [26] and *archivist* (Version 2.3.4) [27]. Bootstrap procedures were implemented via the *boot* package (Version 1.3–25) [28, 29]. Visualization was performed mainly with *ggplot2* (Version 3.3.2) [30]. Descriptive summary tables were created via the *gtsummary* (Version 1.3.5) package [31].

Key performance indicators (KPIs) for performance evaluation were selected as previously described [17]. Comparison of KPI performances by the different equations, overall and according to liver function, was performed with the following statistical tests. Comparison of IQR (precision) was performed by the bootstrap method. Comparison of median bias was performed by the Wilcoxon-signed rank test [32, 33]. Comparison of accuracy measures (P30, P20, P15 and P10) was assessed by the McNemar's chi square test [34]. All *p*-values were adjusted for multiple testing by Benjamini–Hochberg method (*q*-values). Statistical significance was determined by a *p*-value (adjusted) < 0.05.

The proportion of correct CKD staging (G1, G2, G3a, G3b, G4 and G5) by the different eGFR equations, compared to mGFR, was calculated in the whole cohort and within subgroups (defined according to hepatic or renal dysfunction). Pairwise comparison of CKD staging by GFR_{NMR} vs. that by other equations was performed using the McNemar's test. In case of incorrect CKD staging, the proportion of underestimation of CKD severity (i.e., an overestimation of GFR leading to assign a better CKD stage than that assigned based on mGFR) or overestimation of CKD severity (i.e., an underestimation of GFR leading to assign a worse CKD stage than that assigned based on mGFR) was evaluated for the different eGFR equations.

Results

Patients' characteristics

A total of 205 serum samples of patients with CLD were included in the performance analysis of eGFR equations. Performance evaluation was performed in the whole cohort and according to liver function ('preserved' versus 'reduced' liver function), based on CP scoring and the presence or absence of ascites (Fig. 1).

Out of 205 samples, two could not be assigned a CP score and were excluded from the analysis per liver function. A total of 143/203 (70.4%) samples were assigned to the preserved liver function group and 60/203 (29.6%) to the reduced liver function group (Fig. 1). Sample distribution per center showed a higher proportion of patients with severe liver dysfunction among CLD samples from Lyon (35/50 [70.0%]) compared to Rochester (25/155 [16.1%]) (Fig. 1). This was confirmed by evaluating liver dysfunction severity according to the MELD score, CP scoring classification, and the ascites status of patients (Figure S1). This agrees with the observation that most patients from Lyon were candidates for OLT, while patients from Rochester were mostly outpatients (thus with expected lower CLD severity). Patients' characteristics in the preserved and reduced liver function subgroups are described in Table 1. Mean GFR estimated by the various equations [eGFRcr(ASR), eGFRcr(AS), eGFRcr-cys(ASR), eGFRcr-cys(AS), GFR_{NMR}] in both groups of CLD patients is also presented, along with mean mGFR (Table 1).

Overall performance of eGFR equations

Global performance of GFR_{NMR} was compared to that of the four CKD-EPI equations on $n=205$ collected samples. Median bias of GFR_{NMR} was significantly different from that of all four CKD-EPI equations (Table 2; *p*-values between 0.0024 and < 0.0001). Median Bias was lowest for GFR_{NMR} and eGFRcr(ASR), with -1 (-3 to 1) and 1 (-1 to 3) ml/min/1.73 m², respectively (Table 2 and Fig. 2A). Moreover, the race-free GFR_{NMR} equation demonstrated a lower median bias than its race-free CKD-EPI counterparts eGFRcr(AS) (4 ml/min/1.73 m², *p* < 0.0001) and eGFRcr-cys(AS) (-4 ml/min/1.73 m², *p* = 0.0024) (Table 2 and Fig. 2A).

Precision of GFR_{NMR} was significantly higher (i.e., lower IQR) than that of creatinine-based equations [eGFRcr(ASR) and eGFRcr(AS); *p* = 0.0025 and 0.0043] (Table 2) and was comparable to that of the creatinine- and cystatin C-based eGFR equations [eGFRcr-cys(ASR) and eGFRcr-cys(AS); *p* = 1 and 0.8495].

In addition, P30 and P20 accuracies of GFR_{NMR} were significantly higher than those of creatinine-only equations (*p*-values between 0.0142 and 0.0466) (Table 2, Table S1, Fig. 2B-C, and Figure S2) and were not different from those of creatinine and cystatin C CKD-EPI combined equations (*p*-values between 0.2031 and 0.5778). Although GFR_{NMR} P15 and P10 accuracies were the highest (59.02% for P15, 41.95% for P10) (Table 2, Table S1, Fig. 2D, and Figure S2), these differences did not reach significance (*p*-values between 0.0737 and 0.5387).

Table 1 Patients' characteristics according to liver function. (To be placed after 'Results' subsection 'Patient's characteristics')

Characteristics	N ^a	Preserved Liver Function, ^b N = 143	Reduced Liver Function, ^c N = 60	p-value ^d	q-value ^e
Center, n / N (%)	203			< 0.001	< 0.001
Lyon (n = 48)		13 / 143 (9.0%)	35 / 60 (58.0%)		
Rochester (n = 155)		130 / 143 (91.0%)	25 / 60 (42.0%)		
Age, Mean (SD) (years)	203	58.5 (12.6)	58.0 (10.0)	0.3	0.4
Age Group, n / N (%)	203			0.029	0.049
< 40 years		12 / 143 (8.4%)	4 / 60 (6.7%)		
40–65 years		80 / 143 (56.0%)	45 / 60 (75.0%)		
> 65 years		51 / 143 (35.6%)	11 / 60 (18.3%)		
Sex, n / N (%)	203			0.13	0.2
female		53 / 143 (37.0%)	15 / 60 (25.0%)		
male		90 / 143 (63.0%)	45 / 60 (75.0%)		
Ethnicity	203			0.3	0.4
Black		5 / 143 (3.5%)	0 / 60 (0%)		
Non-black		138 / 143 (96.5%)	60 / 60 (100%)		
Height (cm), Mean (SD)	203	171.1 (10.3)	171.0 (8.8)	0.8	0.9
Weight (kg), Mean (SD)	203	88.6 (22.1)	84.1 (17.8)	0.3	0.4
BMI (kg/m ²), Mean (SD)	203	30.2 (6.9)	28.7 (5.7)	0.2	0.3
BMI Category, n / N (%)	203			0.7	0.8
< 20		3 / 143 (2.1%)	2 / 60 (3.3%)		
20–25		31 / 143 (22%)	14 / 60 (23.3%)		
25–30		49 / 143 (34%)	23 / 60 (38.3%)		
> 30		60 / 143 (42%)	21 / 60 (35.1%)		
SBP (mmHg), Mean (SD)	203	129.4 (18.6)	120.5 (19.8)	0.001	0.003
DBP (mmHg), Mean (SD)	203	76.9 (11.4)	70.1 (11.4)	< 0.001	< 0.001
BP Category, n / N (%)	203			0.006	0.012
Normal		35 / 143 (24.5%)	29 / 60 (48.0%)		
Elevated		22 / 143 (15.4%)	10 / 60 (17.0%)		
Stage I Hypertension		37 / 143 (25.9%)	9 / 60 (15.0%)		
Stage II Hypertension		49 / 143 (34.2%)	12 / 60 (20.0%)		
No BP Measurement		0 / 143 (0.0%)	0 / 60 (0.0%)		
CKD Stage, n / N (%)	203			0.022	0.039
G1		22 / 143 (15.0%)	12 / 60 (20.0%)		
G2		48 / 143 (34.0%)	13 / 60 (21.7%)		
G3a		36 / 143 (25.0%)	16 / 60 (26.7%)		
G3b		27 / 143 (19.0%)	6 / 60 (10.0%)		
G4		9 / 143 (6.3%)	12 / 60 (20.0%)		
G5		1 / 143 (0.7%)	1 / 60 (1.6%)		
Encephalopathy, n / N (%)	203			> 0.9	> 0.9
No		141 / 143 (98.6%)	59 / 60 (98.3%)		
Yes		2 / 143 (1.4%)	1 / 60 (1.7%)		
Ascites, n / N (%)	203			< 0.001	< 0.001
Not Present		143 / 143 (100.0%)	18 / 60 (30.0%)		
Present		0 / 143 (0%)	42 / 60 (70.0%)		
MELD Score, Mean (SD)	197	10.4 (3.3)	19.4 (8.6)	< 0.001	< 0.001
(Missing, n)		1	5		
Hepatic Dysfunction, n / N (%)	197			< 0.001	< 0.001
MELD ≤ 15		130 / 142 (91.5%)	18 / 55 (33.0%)		
MELD > 15		12 / 142 (8.5%)	37 / 55 (67.0%)		
(Missing, n)		1	5		

Table 1 (continued)

Characteristics	N ^a	Preserved Liver Function, ^b N = 143	Reduced Liver Function, ^c N = 60	p-value ^d	q-value ^e
Child–Pugh Class, n / N (%)	203			< 0.001	< 0.001
Class A		143 / 143 (100.0%)	6 / 60 (10.0%)		
Class B		0 / 143 (0.0%)	45 / 60 (75.0%)		
Class C		0 / 143 (0.0%)	9 / 60 (15.0%)		
Serum Creatinine (mg/dL), Mean (SD)	203	1.36 (0.67)	1.14 (0.61)	< 0.001	0.002
Serum Cystatin C (mg/L), Mean (SD)	203	1.60 (0.65)	1.68 (0.78)	0.8	0.9
Serum albumin (g/dL), Mean (SD)	202	4.20 (0.41)	3.24 (0.58)	< 0.001	< 0.001
(Missing, n)		0	1		
mGFR, ^f Mean (SD)	203	62.5 (26.5)	59.9 (31.5)	0.3	0.4
eGFRcr(ASR), ^f Mean (SD)	203	61.6 (26.9)	77.3 (31.2)	< 0.001	0.002
eGFRcr(AS), ^f Mean (SD)	203	64.3 (27.1)	80.1 (30.9)	< 0.001	0.002
eGFRcr-cys(ASR), ^f Mean (SD)	203	54.5 (24.2)	61.5 (28.9)	0.10	0.2
eGFRcr-cys(AS), ^f Mean (SD)	203	56.8 (25.0)	63.3 (29.6)	0.2	0.2
GFR _{NMR} , ^f Mean (SD)	203	60.3 (23.5)	59.2 (25.4)	0.7	0.8

Abbreviations: AS age and sex, ASR age, sex and race, BMI body mass index, BP blood pressure, CKD chronic kidney disease, CP class Child–Pugh class, DBP diastolic blood pressure, eGFR estimated glomerular filtration rate, MELD Model for End-stage Liver Disease, mGFR measured glomerular filtration rate, SBP systolic blood pressure, SD standard deviation

^a Two (out of 205) samples had no assigned Child–Pugh (CP) score and were therefore omitted from the calculations (see Fig. 1); ^b Preserved Liver Function, defined as CP class A without ascites; ^c Reduced Liver Function, defined as CP class A with ascites, CP class B or CP class C; ^d Statistical tests performed: chi-square test of independence, Wilcoxon rank-sum test, Fisher’s exact test; ^e Benjamini & Hochberg correction for multiple testing; ^f ml/min/1.73 m² of body-surface area

Performance of eGFR equations by liver function

In CLD patients with preserved liver function (n = 143), all five eGFR equations revealed comparable performances as to precision, bias, and accuracy (Table 2, Table S1, Figs. 3 and 4A), with a few exceptions. Specifically, median bias of GFR_{NMR} (-2 ml/min/1.73 m²) was significantly different from that of eGFRcr(AS) (1 ml/min/1.73 m², p = 0.0422), eGFRcr-cys(ASR) (-7 ml/min/1.73 m², p < 0.0001) and eGFRcr-cys(AS) (-6 ml/min/1.73 m², p < 0.0001) (Table 2 and Fig. 3A).

In CLD patients with reduced liver function (n = 60), however, differences in performances were observed between the compared eGFR equations. While GFR_{NMR} performed as well as the creatinine-cystatin C combined CKD-EPI equations regarding precision and accuracy (p-values between 0.4114 and 1), it performed statistically significantly better than the creatinine-only equations as to precision, bias, and accuracy (Table 2, Table S1, Figs. 3 and 4B). The superior accuracy of the GFR_{NMR} and eGFRcr-cys equations over that of eGFRcr equations was statistically significant for P30, P20 and P15 (p-values between 0.0002 and 0.0206) (Table 2, Table S1, Figs. 3B-D and 4B). Moreover, GFR_{NMR} performed best as to median bias (1 ml/min/1.73 m²) compared to eGFRcr(ASR) (13 ml/min/1.73 m², p < 0.0001), eGFRcr(AS) (16.5 ml/min/1.73 m², p < 0.0001), eGFRcr-cys(ASR) (2 ml/min/1.73 m², p = 0.0448), and eGFRcr-cys(AS) (2 ml/min/1.73 m², p = 0.0007) (Table 2 and

Fig. 3A). The superiority of GFR_{NMR} and eGFRcr-cys over eGFRcr in patients with reduced liver function was even visually apparent when directly comparing eGFR to the respective mGFR by scatter plot analysis (Fig. 5). This analysis further illustrated that the creatinine-based equations systematically overestimated GFR in patients with reduced liver function (Fig. 5A,C versus B,D,E, red dots). These results were confirmed when comparing patients according to their MELD score (Figure S3) or their ascites status (Figure S4).

In addition, we evaluated the difference in performance between both liver function status as an indicator of performance stability. GFR_{NMR} showed the lowest difference in performance between preserved and reduced liver function as to precision (-0.5 ml/min/1.73 m²), median bias (-3 ml/min/1.73 m²), and P10 accuracy (0.99%) (Table 2, last column). In line with the lowest difference observed between median bias in both liver disease severity groups, GFR_{NMR} showed a marginal under- and overestimation of GFR in preserved and reduced liver function (-2 and 1 ml/min/1.73 m², respectively) (Table 2 and Fig. 3A). The creatinine-based equations showed the highest difference in all cases (Table 2 and Table S1, last columns). eGFRcr-cys(ASR) and eGFRcr-cys(AS) showed the lowest difference in P30 accuracy (Table 2, last column), and eGFRcr-cys(AS) showed the lowest difference in P20 and P15 accuracy (Table S1, last column).

Table 2 KPIs overall ($n = 205$) and by liver function (preserved liver function, $n = 143$; reduced liver function, $n = 60$). (To be placed after 'Results' subsection 'Overall performance of eGFR equations')

KPI	Equation	Overall	Preserved Liver Function (PLF)	Reduced Liver Function (RLF)	Difference in KPI between RLF and PLF
Precision: IQR ^a	eGFRcr(ASR)	19 [12–22]*	12.5 [10.5–16.5]	29.25 [23–35.5]*	-16.75 [-23.5–-8.01]
	eGFRcr(AS)	19 [12–22.97]*	13 [10.5–16]	31.5 [24–37.74]*	-18.5 [-25.25–-10.26]
	eGFRcr-cys(ASR)	14 [12–17]	10 [9–12.5]	15.25 [10.25–21.24]	-5.25 [-10.75–-0.75]
	eGFRcr-cys(AS)	13 [10–15]	11 [9–14]	13.5 [9–21]	-2.5 [-10.25–-2.5]
	GFR _{NMR}	14 [12–16]	14 [11–16]	14.5 [10–22.49]	-0.5 [-8.99–4]
Bias: median bias ^b	eGFRcr(ASR)	1 [-1–3]*	-3 [-5–-1]	13 [9–25]*	-16 [-28–-11]
	eGFRcr(AS)	4 [2–7]*	1 [-2–2]*	16.5 [12–28.99]*	-15.5 [-28–-10.01]
	eGFRcr-cys(ASR)	-6 [-8–-5]*	-7 [-10–-6]*	2 [-2.5–4.5]*	-9 [-13–-4.5]
	eGFRcr-cys(AS)	-4 [-6–-3]*	-6 [-7–-4]*	2 [0–5]*	-8 [-11–-5]
	GFR _{NMR}	-1 [-3–1]	-2 [-4–0]	1 [-3.5–2.5]	-3 [-5–2]
Accuracy: P10 ^c	eGFRcr(ASR)	35.61 [29.27–41.95]	41.96 [33.57–49.65]	21.67 [11.67–31.67]	20.29 [6.63–32.55]
	eGFRcr(AS)	38.54 [31.22–44.88]	46.15 [37.76–53.85]	21.67 [11.67–31.67]	24.49 [10.73–37.28]
	eGFRcr-cys(ASR)	31.22 [24.88–37.07]	30.77 [23.08–38.46]	31.67 [20–43.33]	-0.9 [-15.52–13.29]
	eGFRcr-cys(AS)	35.12 [28.29–41.45]	35.66 [27.97–43.36]	33.33 [21.67–45]	2.33 [-12.02–16.09]
	GFR _{NMR}	41.95 [35.12–48.29]	42.66 [34.27–51.05]	41.67 [30–55]	0.99 [-13.74–15.35]
Accuracy: P30 ^c	eGFRcr(ASR)	75.12 [69.28–81.46]*	88.81 [83.22–93.71]	45 [33.33–56.67]*	43.81 [30.48–57.04]
	eGFRcr(AS)	74.15 [68.29–80.49]*	87.41 [82.52–92.31]	45 [33.33–56.67]*	42.41 [29.35–55.64]
	eGFRcr-cys(ASR)	85.85 [81.46–90.72]	88.81 [83.22–93.71]	78.33 [66.67–88.33]	10.48 [-0.64–22.57]
	eGFRcr-cys(AS)	85.85 [80.99–90.24]	88.81 [83.22–93.71]	78.33 [66.67–88.33]	10.48 [-0.48–22.58]
	GFR _{NMR}	83.41 [78.54–88.78]	87.41 [82.52–92.99]	73.33 [61.67–85]	14.08 [1.71–26.61]

Abbreviations: IQR interquartile range, KPI key performance indicator, PLF preserved Liver Function; RLF Reduced Liver Function

^a Precision defined as the interquartile range (IQR) of the difference to mGFR (ml/min/1.73 m²); ^bBias defined as the median difference to mGFR (ml/min/1.73 m²); ^cP10 and P30 accuracy defined as the percentage of samples within an error tolerance to mGFR of 10% (P10) or 30% (P30) (%). Numbers in brackets show the bootstrapped 95% confidence intervals ($n = 1000$). Bold marked values show the best value for the given KPI over all five equations in the given subgroup. Symbol * indicates statistical significance (any p -values < 0.05) in the pairwise tests against GFR_{NMR} for each KPI. The last column shows the difference between reduced and preserved liver function in the given KPI for each equation as a measure of disparity

CKD Staging performance by eGFR equations

Proper staging of renal dysfunction (defined according to the Kidney Disease Outcomes Quality Initiative (KDOQI) guidelines; [35]) is essential for accurate prognosis and patient management. With this in mind, performance of eGFR equations to assign a correct CKD stage (G1, G2, G3a, G3b, G4 or G5), compared to mGFR-based CKD staging as reference, was evaluated in the whole cohort and in subgroups defined according to hepatic or renal dysfunction (i.e., preserved or reduced liver function, MELD score \leq or $>$ 15, absence or presence of ascites, mGFR \geq or $<$ 60 ml/min/1.73 m²) (Table 3).

In the overall population, GFR_{NMR} showed the best CKD staging (120/205 [58.5%] correct CKD stages), as well as a balanced proportion of under- and overestimation of CKD severity in case of incorrect CKD staging (37/205 [18.1%] and 48/205 [23.4%], respectively) (Table 3). While the race-free CKD-EPI equations (“AS”) slightly improved CKD staging compared to their “ASR” counterparts, they were both biased toward either

underestimating (eGFRcr) or overestimating (eGFRcr-cys) CKD severity (Table 3).

In subgroup analyses, the best CKD staging was achieved by GFR_{NMR} and eGFRcr-cys(AS) (Table 3). In contrast, creatinine-based equations were the least performant, especially in subgroups with severe liver dysfunction (Table 3). As for the overall population, GFR_{NMR} showed a balanced proportion of under- and overestimation of CKD severity in most subgroups, except for renal dysfunction. Here, GFR_{NMR} overestimated CKD severity in 33/96 (34.4%) patients with mGFR \geq 60 ml/min/1.73 m² compared to only 6/96 (6.2%) underestimates of CKD severity in these patients. In patients with reduced renal function (mGFR < 60 ml/min/1.73 m²), all equations tended to either overestimate (eGFRcr-cys) or underestimate (eGFRcr, GFR_{NMR} to a lesser extent) CKD severity. Noteworthy, the creatinine-based equations were the most biased equations toward underestimating CKD severity in patients with reduced liver function and in patients with ascites (Table 3).

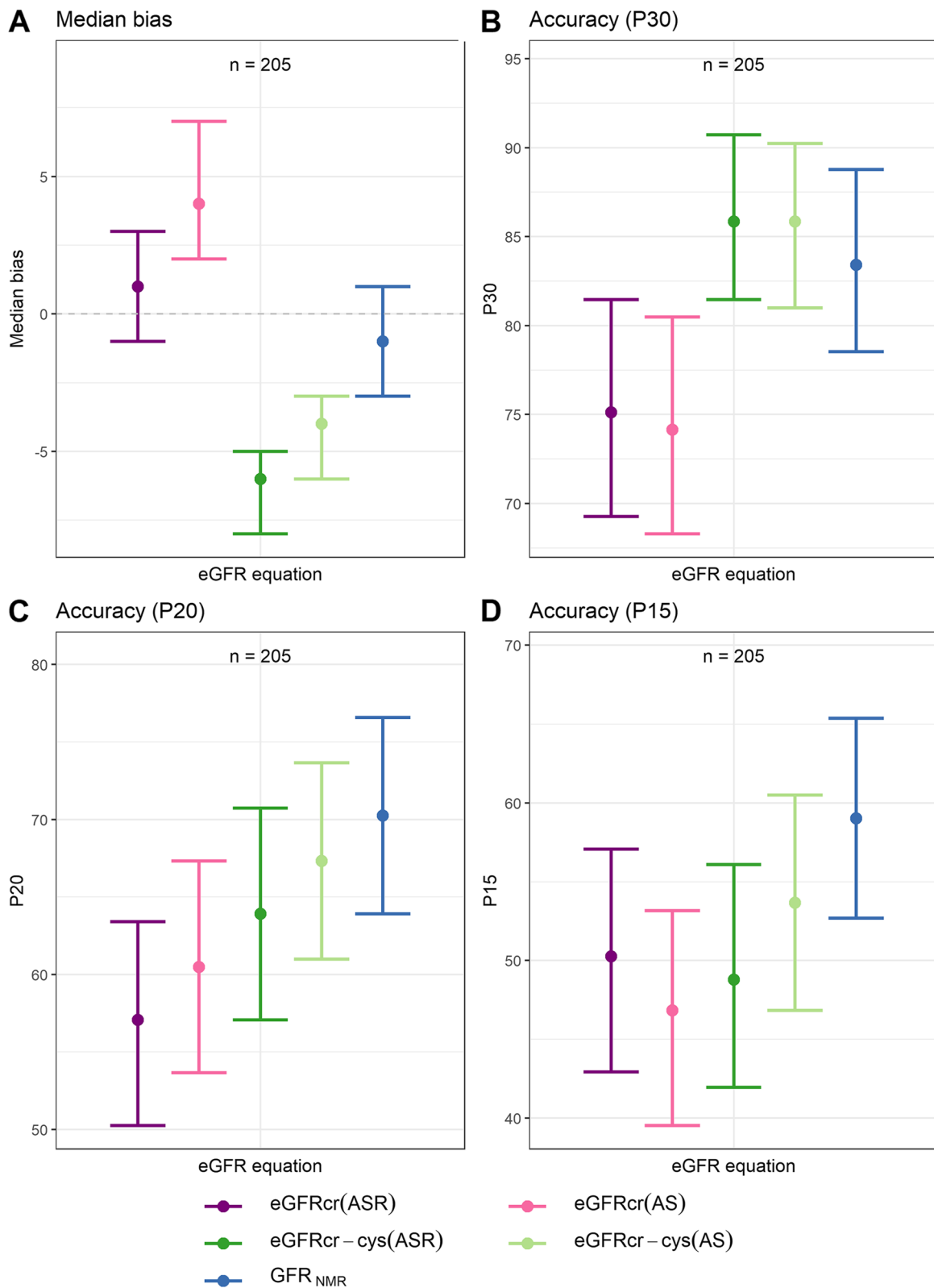


Fig. 2 Key performance indicators (KPI) of eGFR equations in the whole dataset ($n = 205$). KPI evaluated were: median bias of eGFR to mGFR (A) and accuracy of eGFR measured as the percentage of samples with eGFR within 30% (P30) (B), 20% (P20) (C), and 15% (P15) (D) of mGFR. Error bars indicate bootstrapped 95% confidence interval ($n = 1000$). Dots represent the KPI of all data points. Each eGFR equation is represented by a different color, as indicated

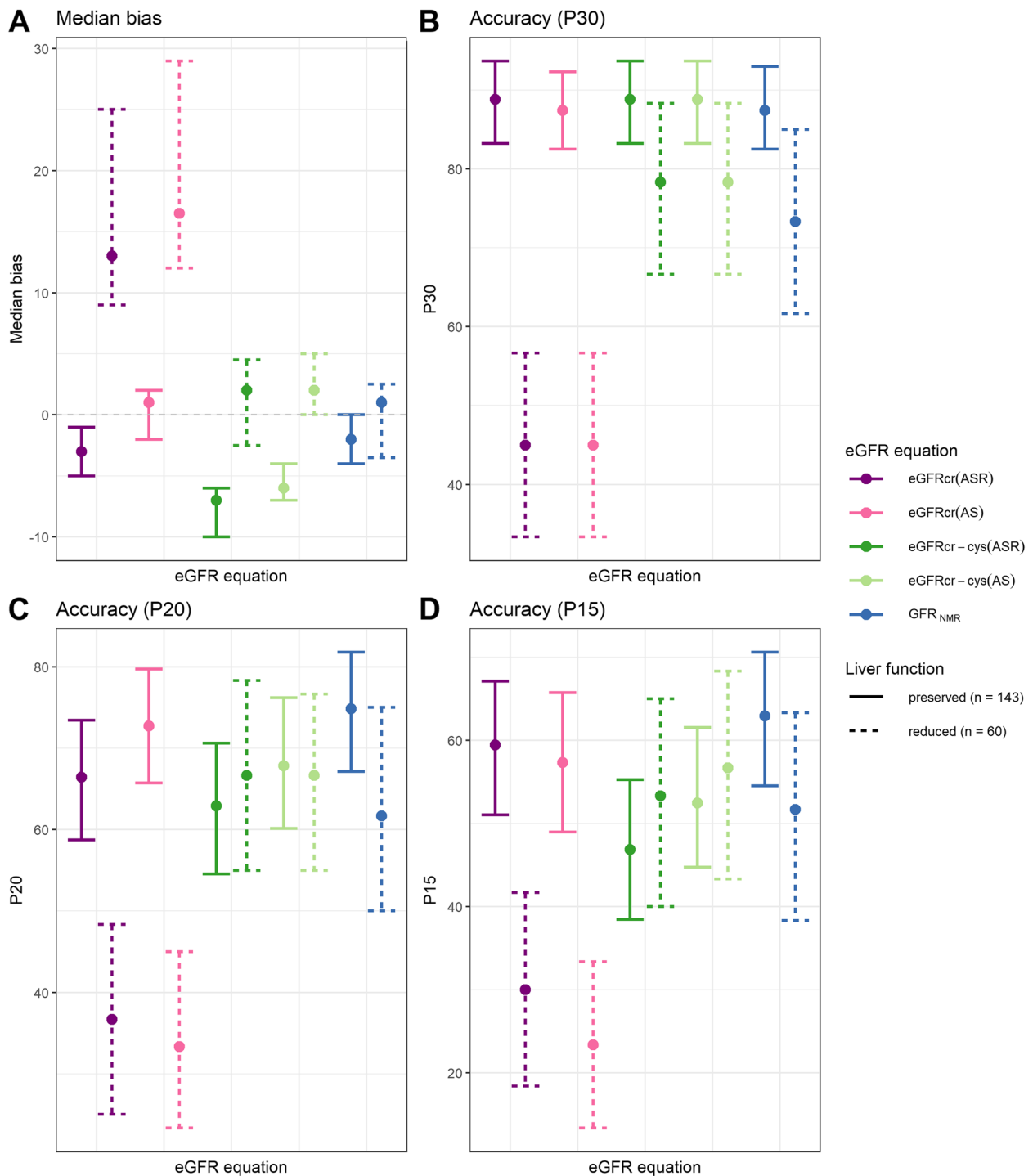


Fig. 3 Key performance indicators (KPI) for each eGFR equation stratified by liver function (preserved vs. reduced). KPI evaluated were: median bias of eGFR to mGFR (**A**) and accuracy of eGFR measured as the percentage of samples with eGFR within 30% (P30) (**B**), 20% (P20) (**C**), and 15% (P15) (**D**) of mGFR. Error bars show the bootstrapped 95% confidence intervals ($n = 1000$). Solid lines of the error bars indicate the performance in the subgroup of patients with preserved liver function, while dashed lines indicate performance in patients with reduced liver function. Each eGFR equation is represented by a different color, whereas the tone of the color indicates the family of equations, with purple and pink encoding for creatinine-only equations [eGFRcr(ASR) and eGFRcr(AS)], dark and bright green encoding for creatinine and cystatin C-containing equations [eGFRcr-cys(ASR) and eGFRcr-cys(AS)], and blue encoding for the GFR_{NMR} equation

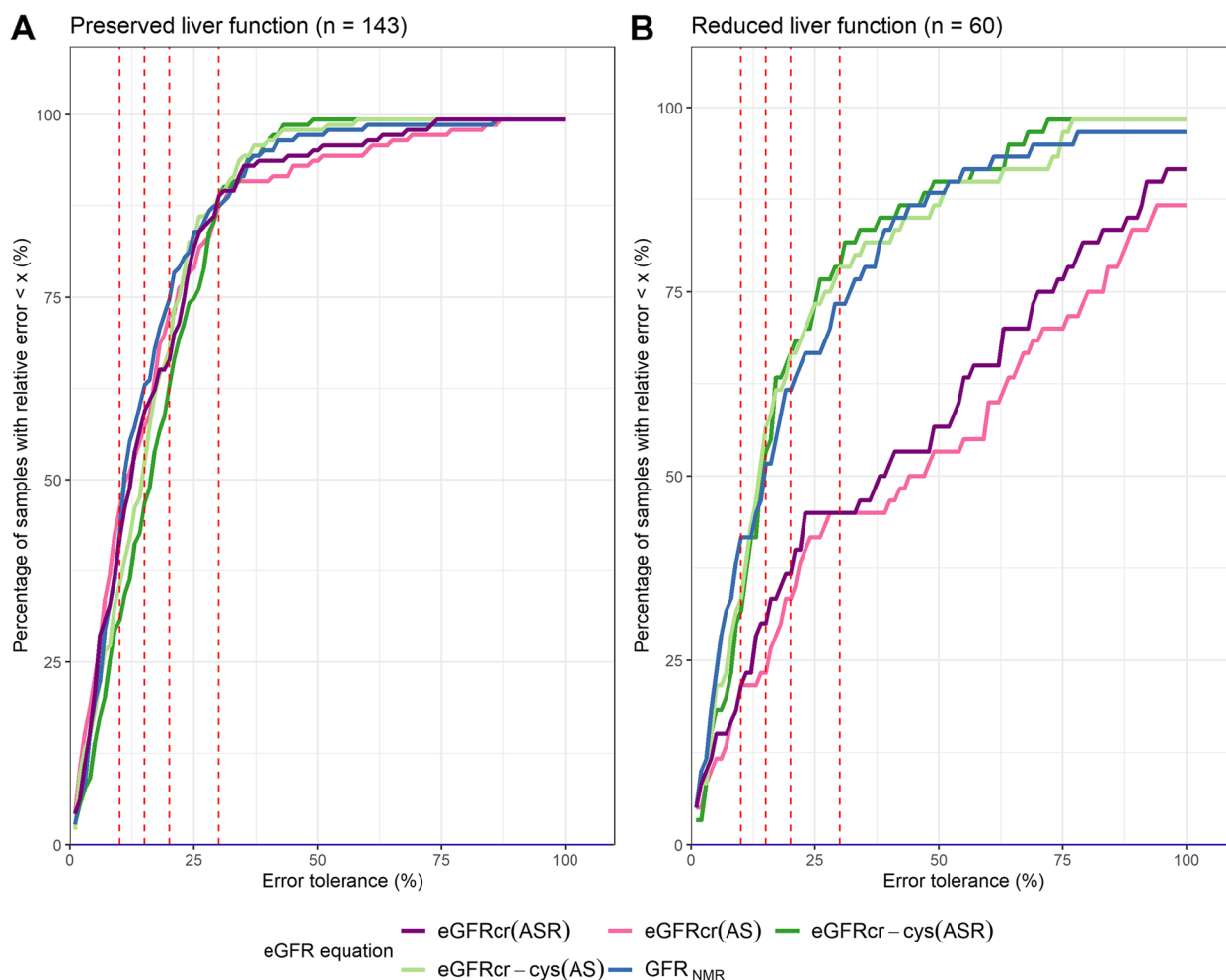


Fig. 4 Accuracy levels of eGFR equations in patients with preserved and reduced liver function. Percentage of samples with eGFR within varying error tolerance compared to mGFR, for each eGFR equation among patients with preserved (**A**) and reduced (**B**) liver function. Each eGFR equation is represented by a different color. Red dashed vertical lines indicate error tolerance cutoffs at 10% (P10), 15% (P15), 20% (P20) and 30% (P30) (from left to right, respectively). Panel (**B**) demonstrates the inferior accuracy of creatinine-only eGFR equations in patients with reduced liver function

Discussion

In patients who suffer from CLD, renal impairment has significant implications, not only as a predictor of survival in the MELD score, yet also on drug dosing, interventions, and assessment for OLT. The very nature of CLD with distorted creatinine metabolism and ascites-associated hemodynamic instability renders creatinine-based GFR estimation unreliable to determine renal insufficiency [5, 10, 13, 36]. This study therefore undertook a performance comparison of GFR_{NMR} and the most widely used eGFR equations in a population of patients with CLD with mGFR as gold standard reference.

When considering the whole CLD population, GFR_{NMR} showed the least median bias. In contrast, eGFR equations incorporating both creatinine and cystatin C

(eGFRcr-cys) underestimated GFR, while creatinine-only eGFR equations overestimated GFR. Accuracy of GFR_{NMR} was superior to that of eGFRcr equations and comparable to that of eGFRcr-cys equations. In patients with severe liver dysfunction, the superiority of GFR_{NMR} over eGFRcr was further confirmed, and GFR_{NMR} showed the smallest difference in bias between patients with reduced and preserved liver function, demonstrating its robustness regardless of liver disease severity. Determination of CKD stage in CLD is of major importance to determine if a combined hepatic and kidney transplantation should be performed. Clinical decision making based on a more accurate and less biased eGFR equation like GFR_{NMR}, irrespective of the degree of liver impairment, is essential to reliably evaluate the renal functional reserve (RFR) and better predict patient recovery after OLT.

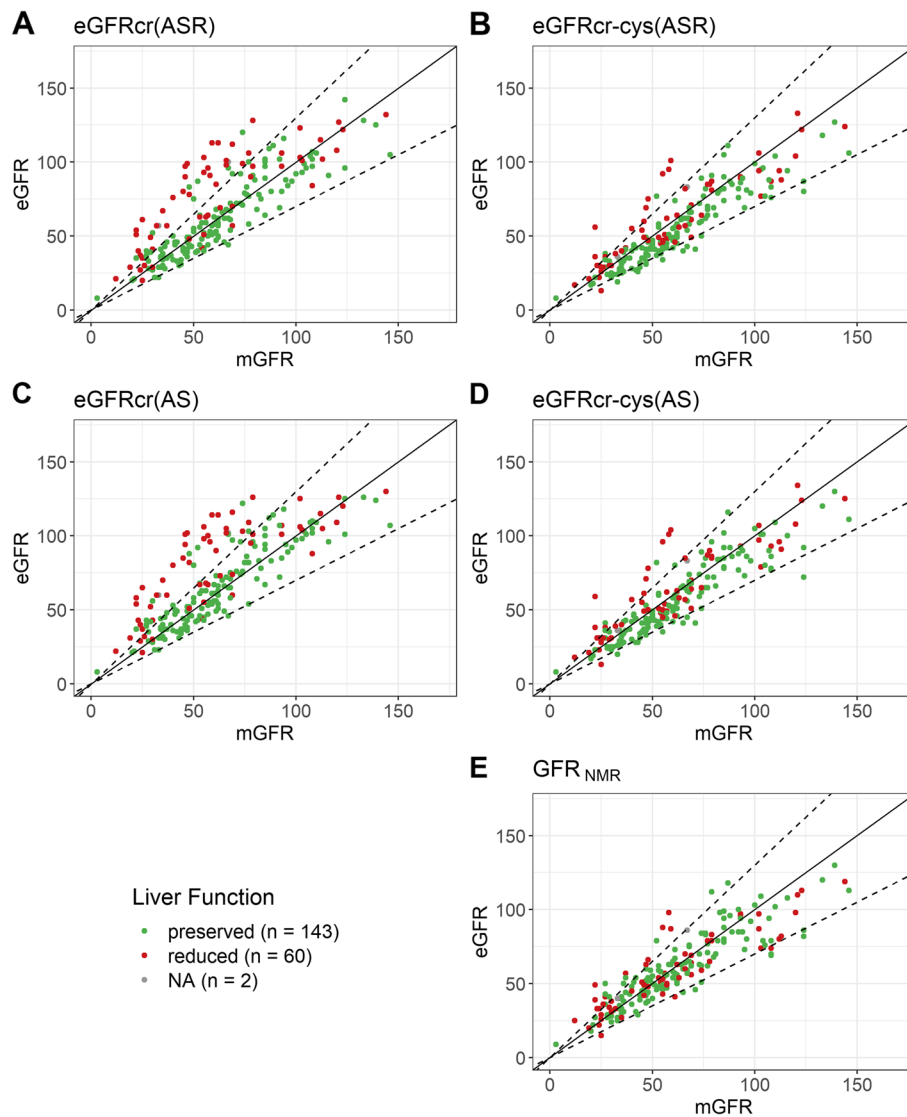


Fig. 5 Scatterplot of estimated GFR (eGFR) versus measured GFR (mGFR) according to liver function. Estimated GFR calculated by each eGFR equation (A-E) is shown relative to the respective mGFR. The solid line indicates identity. Dashed black lines indicate P30 boundaries (values within identity and the dashed borders are considered within 30% of mGFR). Red dots indicate patients with reduced liver function (Child–Pugh Class A with Ascites, or Child–Pugh Class B, or Child–Pugh Class C; n = 60). Green dots indicate patients with preserved liver function (Child–Pugh Class A without Ascites; n = 143)

Our findings confirm previous works demonstrating that creatinine-based equations significantly overestimate mGFR [5, 13, 15, 16, 36], and validate the benefit of cystatin C as a biomarker of renal function in CLD [15, 16, 37]. Hemodynamic instability seen in ascites, in combination with an altered creatinine physiology and muscle mass catabolism seen in liver failure, is a likely driver of the unreliability of eGFRcr in our CLD cohort. The addition of cystatin C and further biomarkers in the NMR constellation (valine, myo-inositol) seem to improve the bias and accuracy of GFR estimations in decompensated liver

failure. Similar results were obtained by De Souza et al. in subgroup analyses on comparing eGFR equations based on creatinine to equations based on cystatin C alone or in combination with creatinine, in patients with increasing ascites severity and those with a MELD score > 15 [15]. Furthermore, these results are in accordance with other studies suggesting that patients with ascites are more likely to have an overestimation of their GFR with creatinine-based eGFR [13], and that cystatin C correlates with GFR in end-stage liver failure, giving a diagnostic advantage in the detection of lower GFR in patients

Table 3 eGFR equation performance in enabling accurate CKD staging (G1, G2, G3a, G3b, G4, G5). (To be placed after ‘Results’ subsection ‘CKD Staging performance by eGFR equations’)

Subgroup	Samples (N)	Equation	Correct CKD Staging ^a	Error in CKD Staging	
				Underestimation of CKD severity	Overestimation of CKD severity
Overall	205	eGFR _{cr} (ASR)	98 (47.8%)	64 (31.2%)	43 (21.0%)
		eGFR _{cr} (AS)	104 (50.7%)	74 (36.1%)	27 (13.2%)
		eGFR _{cr-cys} (ASR)	104 (50.7%)	23 (11.3%)	78 (38.0%)
		eGFR _{cr-cys} (AS)	109 (53.2%)	31 (15.1%)	65 (31.7%)
		GFR _{NMR}	120 (58.5%)	37 (18.1%)	48 (23.4%)
Preserved liver function	143	eGFR _{cr} (ASR)	78 (54.5%)	26 (18.2%)	39 (27.3%)
		eGFR _{cr} (AS)	84 (58.7%)	34 (23.8%)	25 (17.5%)
		eGFR _{cr-cys} (ASR)	67 (46.9%)	8 (5.5%)	68 (47.6%)
		eGFR _{cr-cys} (AS)	71 (49.7%)	14 (9.7%)	58 (40.6%)
		GFR _{NMR}	85 (59.4%)	22 (15.4%)	36 (25.2%)
Reduced liver function	60	eGFR _{cr} (ASR)	20 (33.3%)*	36 (60.0%)	4 (6.7%)
		eGFR _{cr} (AS)	20 (33.3%)*	38 (63.3%)	2 (3.4%)
		eGFR _{cr-cys} (ASR)	35 (58.3%)	15 (25.0%)	10 (16.7%)
		eGFR _{cr-cys} (AS)	36 (60.0%)	17 (28.3%)	7 (11.7%)
		GFR _{NMR}	33 (55.0%)	15 (25.0%)	12 (20.0%)
MELD ≤ 15	148	eGFR _{cr} (ASR)	78 (52.7%)	37 (25.0%)	33 (22.3%)
		eGFR _{cr} (AS)	80 (54.1%)	46 (31.1%)	22 (14.8%)
		eGFR _{cr-cys} (ASR)	73 (49.3%)	12 (8.1%)	63 (42.6%)
		eGFR _{cr-cys} (AS)	76 (51.4%)	20 (13.5%)	52 (35.1%)
		GFR _{NMR}	87 (58.8%)	26 (17.6%)	35 (23.6%)
MELD > 15	49	eGFR _{cr} (ASR)	18 (36.7%)	21 (42.9%)	10 (20.4%)
		eGFR _{cr} (AS)	22 (44.9%)	22 (44.9%)	5 (10.2%)
		eGFR _{cr-cys} (ASR)	26 (53.1%)	9 (18.4%)	14 (28.5%)
		eGFR _{cr-cys} (AS)	28 (57.1%)	9 (18.4%)	12 (24.5%)
		GFR _{NMR}	28 (57.1%)	9 (18.4%)	12 (24.5%)
Ascites not present	163	eGFR _{cr} (ASR)	86 (52.8%)	35 (21.5%)	42 (25.7%)
		eGFR _{cr} (AS)	93 (57.1%)	43 (26.4%)	27 (16.5%)
		eGFR _{cr-cys} (ASR)	80 (49.1%)	11 (6.7%)	72 (44.2%)
		eGFR _{cr-cys} (AS)	84 (51.5%)	18 (11.1%)	61 (37.4%)
		GFR _{NMR}	97 (59.5%)	26 (16.0%)	40 (24.5%)
Ascites present	42	eGFR _{cr} (ASR)	12 (28.6%)*	29 (69.0%)	1 (2.4%)
		eGFR _{cr} (AS)	11 (26.2%)*	31 (73.8%)	0 (0.0%)
		eGFR _{cr-cys} (ASR)	24 (57.1%)	12 (28.6%)	6 (14.3%)
		eGFR _{cr-cys} (AS)	25 (59.5%)	13 (31.0%)	4 (9.5%)
		GFR _{NMR}	23 (54.8%)	11 (26.2%)	8 (19.0%)
mGFR ≥ 60 ^b	96	eGFR _{cr} (ASR)	56 (58.3%)	21 (21.9%)	19 (19.8%)
		eGFR _{cr} (AS)	59 (61.5%)	24 (25.0%)	13 (13.5%)
		eGFR _{cr-cys} (ASR)	53 (55.2%)	4 (4.2%)	39 (40.6%)
		eGFR _{cr-cys} (AS)	61 (63.5%)	6 (6.2%)	29 (30.3%)
		GFR _{NMR}	57 (59.4%)	6 (6.2%)	33 (34.4%)
mGFR < 60 ^b	109	eGFR _{cr} (ASR)	42 (38.5%)*	43 (39.4%)	24 (22.1%)
		eGFR _{cr} (AS)	45 (41.3%)*	50 (45.9%)	14 (12.8%)
		eGFR _{cr-cys} (ASR)	51 (46.8%)	19 (17.4%)	39 (35.8%)
		eGFR _{cr-cys} (AS)	48 (44.0%)	25 (23.0%)	36 (33.0%)
		GFR _{NMR}	63 (57.8%)	31 (28.4%)	15 (13.8%)

^a Correct CKD staging marks the number of samples an equation correctly predicted CKD staging (against staging by mGFR), and symbol * indicates statistical significance (any *p*-values < 0.05) in pairwise McNemar’s tests of GFR_{NMR} against each CKD-EPI equation; ^b ml/min/1.73 m². Numbers in parenthesis represent corresponding percentage of total patients within the given subgroup. Additionally, when CKD staging was not correctly predicted, under- and overestimation of CKD severity (corresponding to over- and underestimation of eGFR, respectively) was evaluated. Percentages sum up to 100% over all three columns

with liver failure [38]. These results support the view that the use of creatinine-based equations to determine GFR in CLD is limited and tends to worsen in correlation with the degree of severity of liver disease. Although the addition of cystatin C can improve the accuracy and bias of estimation, further addition of myo-inositol and valine in GFR_{NMR} appears to further improve the estimation of GFR.

To our knowledge, this is the first study to examine NMR-derived GFR estimations in CLD patients. The strengths of this study were the use of gold standard reference for GFR and its multicenter nature. Our study presents a few limitations. First, only 42/205 (20.5%) enrolled patients were documented as having ascites, which resulted in an imbalanced group of patients with reduced liver function ($n=60$) compared to those with preserved liver function ($n=143$). Second, there were some differences in ascites diagnostic criteria between both centers that needed retrospective CP scoring harmonization. Although this allowed a uniformized CP scoring, it might have biased clinical CP class assignments as our measure of liver dysfunction. However, our findings were confirmed by analyses according to MELD score or ascites status, limiting overall risk of bias. Third, despite the international nature of this study, only five patients were self-declared as black. As a result, this study group may not reflect the racial diversity seen in most liver centers in the USA and limit our findings to Caucasian patient populations. Fourth, our sample set comprised only $n=10$ patients with $GFR < 30$ mL/min/1.73 m². Thus, further studies are warranted in patients in CKD stages G4/5 to fully validate the clinical value GFR_{NMR} in patients with very low GFR.

Conclusions

Creatinine-based equations are inaccurate in estimating GFR in patients with chronic liver disease. Despite the incorporation of cystatin C into the equation, errors are still seen especially with regards to accurate staging of CKD and in patients with more advanced liver disease. This study demonstrated that additional metabolites measured by NMR spectroscopy improve on shortfalls of creatinine- and cystatin C-based equations, particularly with regards to accuracy and bias. Since more than a decade, diagnostic NMR spectroscopy as such is readily available in nationally operating central clinical reference laboratories for low-density lipoprotein particle quantification in advanced cardiovascular risk assessment. Hence, GFR_{NMR} can also be available soon for assessment of renal functional reserve in patients with advanced chronic liver disease in conventional overnight services.

Abbreviations

CI	Confidence interval
CKD	Chronic kidney disease
CKD-EPI	Chronic Kidney Disease Epidemiology Collaboration
CLD	Chronic liver disease
CP score/class	Child-Pugh score/class
eGFR	Estimated glomerular filtration rate
GFR	Glomerular filtration rate
HE	Hepatic encephalopathy
IQR	Interquartile range
KPI	Key performance indicator
mGFR	Measured glomerular filtration rate
OLT	Orthoptic liver transplantation
MELD	Model of End-stage Liver Disease

Supplementary Information

The online version contains supplementary material available at <https://doi.org/10.1186/s12882-023-03136-y>.

Additional file 1: Table S1. Additional key performance indicators (KPI) for accuracy, overall ($n=205$) and by liver function (preserved liver function, $n=143$; reduced liver function, $n=60$) (complementary to Table 2). **Figure S1.** Sample distribution according to liver function and center (Lyon, Rochester). Liver dysfunction was defined according to different methods: (A) Preserved and reduced liver function, defined in this study based on Child-Pugh scoring and ascites status, (B) Child-Pugh scoring class (A, B and C), (C) MELD score \leq and $>$ 15, and (D) absence and presence of ascites. **Figure S2.** Accuracy levels of eGFR equations in the whole data set ($n=205$). Percentage of samples within varying error tolerance compared to mGFR, for each eGFR equation (represented by a different color). Red dashed vertical lines indicate error tolerance cutoffs at 10% (P10), 15% (P15), 20% (P20) and 30% (P30) (from left to right, respectively). **Figure S3.** Key performance indicators of eGFR equations according to hepatic dysfunction based on MELD score (\leq and $>$ 15). Solid lines indicate performance for samples with MELD ≤ 15 and dashed lines indicate performance for samples with MELD score > 15 . Each eGFR equation is represented by a different color. **Figure S4.** Key performance indicators of eGFR equations according to the ascites status (present or absent) for each eGFR equation. Solid lines indicate performance for subgroup of patients without ascites, dashed lines show performance for subgroup of patients with ascites. Each eGFR equation is represented by a different color.

Acknowledgements

The authors want to thank John Venz (numares AG) for statistical consultation and Jochen H. Ehrich for valuable clinical discussions on metabolite physiology in liver disease. The authors thank Anne Rasclé of AR Medical Writing (Regensburg, Germany) for providing medical writing support, which was funded by numares AG (Regensburg, Germany), in accordance with Good Publication Practice (GPP3) guidelines (<http://www.ismpp.org/gpp3>).

Authors' contributions

F.S. and L.D.-D. equally contributed. Conceptualization, E.S., A.R., L.D.-D. and F.S.; data curation, F.S.; formal analysis, F.S.; investigation, F.S.; methodology, F.S.; project administration, E.S.; resources, L.D.-D., S.L., J.W.M., S.D. and J.C.L.; software, F.S.; supervision, E.S. and A.R.; validation, J.W.M., L.D.-D. and S.L.; visualization, F.S.; writing – original draft, F.S., E.S., A.R., L.D.-D. and S.L.; writing – review & editing, F.S., E.S., A.R., L.D.-D., S.L., J.W.M., S.D. and J.C.L. All authors read and approved the final manuscript.

Funding

This research did not receive external funding.

Availability of data and materials

The datasets used and/or analyzed during the current study are available from the corresponding author on reasonable request.

Declarations

Ethics approval and consent to participate

The study was conducted according to the guidelines of the Declarations of Helsinki and Istanbul, and was approved by the relevant Institutional Review Boards (Mayo Clinic IRB# 19–003513, dated 16 May 2019, and Hospital Edouard Herriot IRB# DC-2012–1615, dated 2 July 2012). All individuals gave informed consent before joining the study.

Consent for publication

Not applicable.

Competing interests

F.S., A.R. and E.S. report personal fees from numares AG, outside the submitted work. numares AG is a diagnostics company and focuses on the discovery, development, and commercialization of diagnostic tests by metabolite constellations. E.S. has a patent application WO002020065092A1 pending. All other authors have declared that no conflict of interest exists.

Received: 8 September 2022 Accepted: 23 March 2023

Published online: 31 March 2023

References

- Weber ML, Ibrahim HN, Lake JR. Renal dysfunction in liver transplant recipients: evaluation of the critical issues. *Liver Transpl*. 2012;18:1290–301.
- Weismüller TJ, Prokein J, Becker T, Barg-Hock H, Klempnauer J, Manns MP, et al. Prediction of survival after liver transplantation by pre-transplant parameters. *Scand J Gastroenterol*. 2008;43:736–46.
- Ginés P, Arroyo V, Rodés J, Schrier RW. Ascites and Renal Dysfunction in Liver Disease: Pathogenesis, Diagnosis, and Treatment, 2nd Edition | Wiley. Blackwell Publishing; 2005 [cited 2022 Jul 14]. Available from: <https://www.wiley.com/en-gb/Ascites+and+Renal+Dysfunction+in+Liver+Disease%3A+Pathogenesis%2C+Diagnosis%2C+and+Treatment%2C+2nd+Edition-p-9781405143707>
- Wiesner R, Edwards E, Freeman R, Harper A, Kim R, Kamath P, et al. Model for end-stage liver disease (MELD) and allocation of donor livers. *Gastroenterology*. 2003;124:91–6.
- Caregaro L, Menon F, Angeli P, Amodio P, Merkel C, Bortoluzzi A, et al. Limitations of serum creatinine level and creatinine clearance as filtration markers in cirrhosis. *Arch Intern Med*. 1994;154:201–5.
- Levey AS, Stevens LA, Schmid CH, Zhang YL, Castro AF, Feldman HI, et al. A new equation to estimate glomerular filtration rate. *Ann Intern Med*. 2009;150:604–12.
- Inker LA, Schmid CH, Tighiouart H, Eckfeldt JH, Feldman HI, Greene T, et al. Estimating glomerular filtration rate from serum creatinine and cystatin C. *N Engl J Med*. 2012;367:20–9.
- Inker LA, Eneanya ND, Coresh J, Tighiouart H, Wang D, Sang Y, et al. New Creatinine- and Cystatin C-Based Equations to Estimate GFR without Race. *N Engl J Med*. 2021;385:1737–49.
- Piano S, Romano A, Di Pascoli M, Angeli P. Why and how to measure renal function in patients with liver disease. *Liver Int*. 2017;37:116–22.
- Slack A, Yeoman A, Wendon J. Renal dysfunction in chronic liver disease. *Crit Care*. 2010;14:214.
- Davenport A, Cholongitas E, Xirouchakis E, Burroughs AK. Pitfalls in assessing renal function in patients with cirrhosis—potential inequity for access to treatment of hepatorenal failure and liver transplantation. *Nephrol Dial Transplant*. 2011;26:2735–42.
- Boudville N, Salama M, Jeffrey GP, Ferrari P. The inaccuracy of cystatin C and creatinine-based equations in predicting GFR in orthotopic liver transplant recipients. *Nephrol Dial Transplant*. 2009;24:2926–30.
- Francoz C, Prié D, Abdelrazek W, Moreau R, Mandot A, Belghiti J, et al. Inaccuracies of creatinine and creatinine-based equations in candidates for liver transplantation with low creatinine: impact on the model for end-stage liver disease score. *Liver Transpl*. 2010;16:1169–77.
- Jung K, Jung M. Cystatin C: a promising marker of glomerular filtration rate to replace creatinine. *Nephron*. 1995;70:370–1.
- De Souza V, Hadj-Aissa A, Dolomanova O, Rabilloud M, Rognant N, Lemoine S, et al. Creatinine- versus cystatin C-based equations in assessing the renal function of candidates for liver transplantation with cirrhosis. *Hepatology*. 2014;59:1522–31.
- Singapura P, Ma T-W, Sarmast N, Gonzalez SA, Durand F, Maiwall R, et al. Estimating Glomerular Filtration Rate in Cirrhosis Using Creatinine-Based and Cystatin C-Based Equations: Systematic Review and Meta-Analysis. *Liver Transpl*. 2021;27:1538–52.
- Stämmli F, Grassi M, Meeusen JW, Lieske JC, Dasari S, Dubourg L, et al. Estimating Glomerular Filtration Rate from Serum Myo-Inositol, Valine, Creatinine and Cystatin C. *Diagnostics (Basel)*. 2021;11:2291.
- Fuhrmann M, Schwaebler Santamaria A, Scott R, Meeusen JW, Fernandes M, Venz J, et al. Analytical Validation of GFRNMR: A Blood-Based Multiple Biomarker Assay for Accurate Estimation of Glomerular Filtration Rate. *Diagnostics*. 2022;12:1120.
- Ehrlich J, Dubourg L, Hansson S, Pape L, Steine T, Fruth J, et al. Serum Myo-Inositol, Dimethyl Sulfone, and Valine in Combination with Creatinine Allow Accurate Assessment of Renal Insufficiency—A Proof of Concept. *Diagnostics (Basel)*. 2021;11:234.
- Tsoris A, Marlar CA. Use Of The Child Pugh Score In Liver Disease [Internet]. In: StatPearls. Treasure Island (FL): StatPearls Publishing; 2022 [cited 2022 Jul 18]. Available from: <http://www.ncbi.nlm.nih.gov/books/NBK542308/>
- Peng Y, Qi X, Guo X. Child-Pugh Versus MELD Score for the Assessment of Prognosis in Liver Cirrhosis. *Medicine (Baltimore)*. 2016;95: e2877.
- Levin AS, Bilous RW, Coresh J. Chapter 1: Definition and classification of CKD. *Kidney Int Suppl*. 2013;3:19–62.
- Malinchoc M, Kamath PS, Gordon FD, Peine CJ, Rank J, ter Borg PC. A model to predict poor survival in patients undergoing transjugular intrahepatic portosystemic shunts. *Hepatology*. 2000;31:864–71.
- R Core Team. R: The R Project for Statistical Computing. R package version 4.0.2 (2020). [Internet]. 2020 [cited 2022 Jul 14]; Available from: <https://www.r-project.org/>
- Hunt T. ModelMetrics: Rapid Calculation of Model Metrics. R package version 1.2.2.2 (2020). [Internet]. 2020 [cited 2022 Jul 14]; Available from: <https://CRAN.R-project.org/package=ModelMetrics>
- Dowle M, Srinivasan A, Gorecki J, Chirico M, Stetsenko P, Short T, et al. data.table: Extension of “data.frame”. R package version 1.13.2 (2020). [Internet]. 2020 [cited 2022 Jul 14]; Available from: <https://CRAN.R-project.org/package=data.table>
- Biecek P, Kosiński M. archivist: An R Package for Managing, Recording and Restoring Data Analysis Results. *J Stat Softw*. 2017;82:1–28.
- Davison AC, Hinkley DV. Bootstrap Methods and Their Application [Internet]. Cambridge Series in Statistical and Probabilistic Mathematics; Cambridge University Press, Cambridge; ISBN 0–521–57391–2. 1997 [cited 2022 Jul 14]; Available from: <http://statwww.epfl.ch/davison/BMA/>
- Canty A, Ripley BD. boot: Bootstrap R (S-Plus) Functions. R package version 1.3–25 (2020). [Internet]. 2020 [cited 2022 Jul 14]; Available from: <http://statwww.epfl.ch/davison/BMA/library.html>
- Wickham H. ggplot2: Elegant Graphics for Data Analysis [Internet]. 2nd ed. Springer International Publishing; 2016 [cited 2022 Jul 14]. Available from: <https://www.springer.com/de/book/9783319242750>
- Sjoberg DD, Curry M, Larmarange J, Lavery J, Whiting K, Zabor EC, et al. gtsummary: Presentation-Ready Data Summary and Analytic Result Tables. R package version 1.3.5 (2020) [Internet]. 2020 [cited 2022 Jul 14]; Available from: <https://CRAN.R-project.org/package=gtsummary>
- Wilcoxon F. Individual Comparisons by Ranking Methods. *Biometrics Bulletin*. 1945;1:80–3.
- Siegel S. Nonparametric statistics for the behavioral sciences. New York: McGraw-Hill; 1956.
- McNemar Q. Note on the sampling error of the difference between correlated proportions or percentages. *Psychometrika*. 1947;12:153–7.
- National Kidney Foundation. K/DOQI clinical practice guidelines for chronic kidney disease: evaluation, classification, and stratification. *Am J Kidney Dis*. 2002;39:51–266.
- Gonwa TA, Jennings L, Mai ML, Stark PC, Levey AS, Klntmalm GB. Estimation of glomerular filtration rates before and after orthotopic liver transplantation: evaluation of current equations. *Liver Transpl*. 2004;10:301–9.

37. Pöge U, Gerhardt T, Stoffel-Wagner B, Klehr HU, Sauerbruch T, Woitas RP. Calculation of glomerular filtration rate based on cystatin C in cirrhotic patients. *Nephrol Dial Transplant*. 2006;21:660–4.
38. Ustundag Y, Samsar U, Acikgoz S, Cabuk M, Kiran S, Kulah E, et al. Analysis of glomerular filtration rate, serum cystatin C levels, and renal resistive index values in cirrhosis patients. *Clin Chem Lab Med*. 2007;45:890–4.

Publisher's Note

Springer Nature remains neutral with regard to jurisdictional claims in published maps and institutional affiliations.

Ready to submit your research? Choose BMC and benefit from:

- fast, convenient online submission
- thorough peer review by experienced researchers in your field
- rapid publication on acceptance
- support for research data, including large and complex data types
- gold Open Access which fosters wider collaboration and increased citations
- maximum visibility for your research: over 100M website views per year

At BMC, research is always in progress.

Learn more biomedcentral.com/submissions

