



HAL
open science

Immunogenetics of lithium response and psychiatric phenotypes in patients with bipolar disorder

Marisol Herrera-Rivero, Karina Gutiérrez-Fragoso, Anbupalam Thalamuthu, Azmeraw Amare, Mazda Adli, Kazufumi Akiyama, Nirmala Akula, Raffaella Ardaù, Bárbara Arias, Jean-Michel Aubry, et al.

► To cite this version:

Marisol Herrera-Rivero, Karina Gutiérrez-Fragoso, Anbupalam Thalamuthu, Azmeraw Amare, Mazda Adli, et al.. Immunogenetics of lithium response and psychiatric phenotypes in patients with bipolar disorder. Research Square - Preprint, 2023, pp.rs.3.rs-3068352. 10.21203/rs.3.rs-3068352/v1 . inserm-04198049

HAL Id: inserm-04198049

<https://inserm.hal.science/inserm-04198049v1>

Submitted on 6 Sep 2023

HAL is a multi-disciplinary open access archive for the deposit and dissemination of scientific research documents, whether they are published or not. The documents may come from teaching and research institutions in France or abroad, or from public or private research centers.

L'archive ouverte pluridisciplinaire **HAL**, est destinée au dépôt et à la diffusion de documents scientifiques de niveau recherche, publiés ou non, émanant des établissements d'enseignement et de recherche français ou étrangers, des laboratoires publics ou privés.



Distributed under a Creative Commons Attribution 4.0 International License

Immunogenetics of lithium response and psychiatric phenotypes in patients with bipolar disorder

Marisol Herrera-Rivero

University of Münster <https://orcid.org/0000-0001-7064-9487>

Karina Gutiérrez-Fragoso

Anbupalam Thalamuthu

University of New South Wales

Azmeraw T. Amare

University of Adelaide, AUSTRALIA <https://orcid.org/0000-0002-7940-0335>

Mazda Adli

Kazufumi Akiyama

Department of Biological Psychiatry and Neuroscience, Dokkyo Medical University

Nirmala Akula

National Institutes of Health, US Dept of Health & Human Services

Raffaella Ardu

Hospital University Agency of Cagliari

Bárbara Arias

Facultat de Biologia and Institut de Biomedicina (IBUB), Universitat de Barcelona, CIBERSAM

<https://orcid.org/0000-0001-9181-2132>

Jean-Michel Aubry

Geneva University Hospitals

Lena Backlund

Frank Bellivier

Antonio Benabarre

Susanne Bengesser

Bhattacharjee Abesh

Joanna Biernacka

Mayo Clinic <https://orcid.org/0000-0001-9350-4440>

Armin Birner

Micah Cearns

<https://orcid.org/0000-0002-3353-8566>

Pablo Cervantes

McGill University Health Centre

Hsi-Chung Chen

National Taiwan University Hospital <https://orcid.org/0000-0003-3191-0093>

Caterina Chillotti

Sven Cichon

Mayo Clinic

Scott Clark

University of Adelaide <https://orcid.org/0000-0003-1640-5611>

Francesc Colom

Cristiana Cruceanu

Max Plank Institute for Psychiatry <https://orcid.org/0000-0002-7799-5531>

Piotr Czerski

Poznan University of Medical Sciences <https://orcid.org/0000-0003-0745-5916>

Nina Dalkner

Franziska Degenhardt

University of Bonn

Maria Del Zompo

University of Cagliari <https://orcid.org/0000-0001-9491-5938>

J. Raymond DePaulo

Johns Hopkins University <https://orcid.org/0000-0001-9221-9226>

Bruno Etain

Peter Falkai

University Hospital LMU

Ewa Ferensztajn-Rochowiak

Andreas J. Forstner

University of Bonn, School of Medicine & University Hospital Bonn <https://orcid.org/0000-0002-1876-6368>

Josef Frank

Central Institute for Mental Health <https://orcid.org/0000-0003-4867-9465>

Louise Frisen

School of Medicine & University Hospital Bonn

Mark Frye

Mayo Clinic <https://orcid.org/0000-0001-6997-4215>

Janice Fullerton

Neuroscience Research Australia <https://orcid.org/0000-0003-4014-4490>

Carla Gallo

Sebastien Gard

Julie Garnham

<https://orcid.org/0000-0002-7987-4995>

Fernando Goes

Maria Grigoriu-Serbanescu

Alexandru Obregia Clinical Psychiatric Hospital <https://orcid.org/0000-0002-1304-6687>

Paul Grof

Ryota Hashimoto

National Center of Neurology and Psychiatry <https://orcid.org/0000-0002-5941-4238>

Roland Hasler

Joanna Hauser

<https://orcid.org/0000-0002-6621-3493>

Urs Heilbronner

Institute of Psychiatric Phenomics and Genomics, University Hospital, LMU Munich

<https://orcid.org/0000-0001-7135-762X>

Stefan Herms

Per Hoffmann

Institute of Human Genetics

Liping Hou

National Institute of Mental Health Intramural Research Program, National Institutes of Health

<https://orcid.org/0000-0003-3972-245X>

YiHsiang Hsu

Mayo Clinic

Stéphane Jamain

Univ Paris Est Creteil, INSERM, IMRB <https://orcid.org/0000-0002-4321-4100>

Esther Jiménez

Jean-Pierre Kahn

Layla Kassem

School of Medicine & University Hospital Bonn

Tadafumi Kato

Laboratory for Molecular Dynamics of Mental Disorders, RIKEN Brain Science Institute, Wako, Saitama 351-0198, Japan

John Kelsoe

University of California, San Diego <https://orcid.org/0000-0002-3013-2333>

Sarah Kittel-Schneider

Po-Hsiu kuo

College of Public Health, National Taiwan University, Taipei, Taiwan <https://orcid.org/0000-0003-0365-3587>

Joachim Kurtz

Ichiro Kusumi

Hokkaido University Graduate School of Medicine <https://orcid.org/0000-0002-8747-5070>

Barbara König

Gonzalo Laje

Mikael Landén

Gothenburg University <https://orcid.org/0000-0002-4496-6451>

Catharina Lavebratt

Karolinska Institutet <https://orcid.org/0000-0003-4987-2718>

Marion Leboyer

<https://orcid.org/0000-0001-5473-3697>

Susan Leckband

Mario Maj

University of Naples, Italy

Mirko Manchia

Dalhousie University

Cynthia Marie-Claire

INSERM UMR-S 1144 <https://orcid.org/0000-0002-2282-134X>

Lina Martinsson

Karolinska Institutet

Michael McCarthy

Susan L. McElroy

Lindner Center of Hope / University of Cincinnati

Vincent Millischer

Marina Mitjans

Max Planck Institute of Experimental Medicine, Göttingen, Germany

Francis Mondimore

Neuroscience Research Australia

Palmiero Monteleone

University of Salerno, University of Naples SUN

Caroline Nievergelt

University of California, San Diego <https://orcid.org/0000-0001-5766-8923>

Tomas Novak

National Institute of Mental Health, Klecany <https://orcid.org/0000-0001-9156-9654>

Markus Nöthen

School of Medicine & University Hospital Bonn <https://orcid.org/0000-0002-8770-2464>

claire odonovan

Norio Ozaki

Nagoya University <https://orcid.org/0000-0002-7360-4898>

Sergi Papiol

University Hospital LMU <https://orcid.org/0000-0001-9366-8728>

Andrea Pfennig

University Hospital Carl Gustav Carus, TU Dresden

Claudia Pisanu

University of Cagliari <https://orcid.org/0000-0002-9151-4319>

James Potash

Andreas Reif

University Hospital Frankfurt, Germany <https://orcid.org/0000-0002-0992-634X>

Eva Reininghaus

<https://orcid.org/0000-0001-5964-4087>

Hélène Richard-Lepouriel

Gloria Roberts

Guy Rouleau

McGill University <https://orcid.org/0000-0001-8403-1418>

Janusz K. Rybakowski

Poznan University of Medical Sciences <https://orcid.org/0000-0003-0577-0381>

Martin Schalling

Karolinska Institutet <https://orcid.org/0000-0001-5011-2922>

Peter Schofield

Neuroscience Research Australia <https://orcid.org/0000-0003-2967-9662>

Klaus Oliver Schubert

University of Adelaide <https://orcid.org/0000-0003-1690-0209>

Eva Schulte

University Hospital, LMU Munich <https://orcid.org/0000-0003-3105-5672>

BARBARA SCHWEIZER

Giovanni Severino

University of Cagliari <https://orcid.org/0000-0002-6354-2662>

Tatyana Shekhtman

Paul Shilling

Kazutaka Shimoda

<https://orcid.org/0000-0002-9663-6243>

Christian Simhandl

claire slaney

Alessio Squassina

Universita degli Studi Di Cagliari <https://orcid.org/0000-0001-7415-7607>

Thomas Stamm

Charité - Universitätsmedizin Berlin, Campus Charité Mitte

Pavla Stopkova

Fabian Streit

University of Heidelberg <https://orcid.org/0000-0003-1080-4339>

Fasil Ayele

Alfonso Tortorella

Department of Psychiatry, University of Perugia, Perugia, Italy

Gustavo Turecki

Douglas Institute, Department of Psychiatry, McGill University <https://orcid.org/0000-0003-4075-2736>

Julia Veeh

Eduard Vieta

Hospital Clinic of Barcelona <https://orcid.org/0000-0002-0548-0053>

Biju Viswanath

National Institute of Mental Health and Neuro Sciences, Bengaluru, Karnataka, India.
<https://orcid.org/0000-0002-7317-1789>

Stephanie Witt

University Medical Centre Mannheim <https://orcid.org/0000-0002-1571-1468>

Peter Zandi

Johns Hopkins University

Martin Alda

Dalhousie University <https://orcid.org/0000-0001-9544-3944>

Michael Bauer

University Hospital Carl Gustav Carus <https://orcid.org/0000-0002-2666-859X>

Francis McMahon

National Institute of Mental Health Intramural Research Program; National Institutes of Health
<https://orcid.org/0000-0002-9469-305X>

Philip Mitchell

University of New South Wales <https://orcid.org/0000-0002-7954-5235>

Marcella Rietschel

University of Mannheim <https://orcid.org/0000-0002-5236-6149>

Thomas Schulze

University of Munich <https://orcid.org/0000-0001-6624-2975>

Bernhard Baune

`bernhard.baune@ukmuenster.de`

University of Münster

Article

Keywords: bipolar disorder, immunity, lithium, polygenic scores, genetics

Posted Date: June 26th, 2023

DOI: <https://doi.org/10.21203/rs.3.rs-3068352/v1>

License:   This work is licensed under a Creative Commons Attribution 4.0 International License.

[Read Full License](#)

Additional Declarations: Eduard Vieta has received grants and served as consultant, advisor or CME speaker for the following entities: AB-Biotics, Abbvie, Almirall, Allergan, Angelini, AstraZeneca, Bristol-Myers Squibb, Dainippon Sumitomo Pharma, Farindustria, Ferrer, Forest Research Institute, Gedeon

Richter, GH Research, Glaxo-Smith-Kline, Janssen, Lundbeck, Orion, Otsuka, Pfizer, Roche, Rovi, Sanofi-Aventis, Servier, Shire, Sunovion, Takeda, the Brain and Behaviour Foundation, the Spanish Ministry of Science and Innovation (CIBERSAM), the Stanley Medical Research Institute and Viatrix. Michael Bauer has received grants from the Deutsche Forschungsgemeinschaft (DFG), and Bundesministeriums für Bildung und Forschung (BMBF), and served as consultant, advisor or CME speaker for the following entities: Allergan, Aristo, Janssen, Lilly, Lundbeck, neuraxpharm, Otsuka, Sandoz, Servier and Sunovion outside the submitted work. Sarah Kittel-Schneider has received grants and served as consultant, advisor or speaker for the following entities: Medice Arzneimittel Pütter GmbH and Takeda. Bernhard Baune has received grants and served as consultant, advisor or CME speaker for the following entities: AstraZeneca, Bristol-Myers Squibb, Janssen, Lundbeck, Otsuka, Servier, the National Health and Medical Research Council, the Fay Fuller Foundation, the James and Diana Ramsay Foundation. Tadafumi Kato received honoraria for lectures, manuscripts, and/or consultancy, from Kyowa Hakko Kirin Co, Ltd, Eli Lilly Japan K.K., Otsuka Pharmaceutical Co, Ltd, GlaxoSmithKline K.K., Taisho Toyama Pharmaceutical Co, Ltd, Dainippon Sumitomo Pharma Co, Ltd, Meiji Seika Pharma Co, Ltd, Pfizer Japan Inc., Mochida Pharmaceutical Co, Ltd, Shionogi & Co, Ltd, Janssen Pharmaceutical K.K., Janssen Asia Pacific, Yoshitomiyakuhin, Astellas Pharma Inc, Wako Pure Chemical Industries, Ltd, Wiley Publishing Japan, Nippon Boehringer Ingelheim Co Ltd, Kanae Foundation for the Promotion of Medical Science, MSD K.K., Kyowa Pharmaceutical Industry Co, Ltd and Takeda Pharmaceutical Co, Ltd. Tadafumi Kato also received a research grant from Takeda Pharmaceutical Co, Ltd. Peter Falkai has received grants and served as consultant, advisor or CME speaker for the following entities Abbott, GlaxoSmithKline, Janssen, Essex, Lundbeck, Otsuka, Gedeon Richter, Servier and Takeda as well as the German Ministry of Science and the German Ministry of Health. Eva Reininghaus has received grants and served as consultant, advisor or CME speaker for the following entities: Janssen and Institut Allergosan. Mikael Landén has received lecture honoraria from Lundbeck. Kazufumi Akiyama has received consulting honoraria from Taisho Toyama Pharmaceutical Co, Ltd. Scott Clark has received grants and served as consultant, advisor or CME speaker for the following entities: Otsuka Australia, Lundbeck Australia, Janssen-Cilag Australia, Servier Australia. The rest of authors have no conflicts of interest to disclose.

Version of Record: A version of this preprint was published at Translational Psychiatry on April 3rd, 2024. See the published version at <https://doi.org/10.1038/s41398-024-02865-4>.

Abstract

The link between bipolar disorder (BP) and immune dysfunction remains controversial. While epidemiological studies have long suggested an association, recent research has found only limited evidence of such a relationship. To clarify this, we investigated the contributions of immune-relevant genetic factors to the response to lithium (Li) treatment and the clinical presentation of BP. First, we assessed the association of a large collection of immune-related genes (4,925) with Li response, defined by the Retrospective Assessment of the Lithium Response Phenotype Scale (Alda scale), and clinical characteristics in patients with BP from the International Consortium on Lithium Genetics (ConLi+Gen, N = 2,374). Second, we calculated here previously published polygenic scores (PGSs) for immune-related traits and evaluated their associations with Li response and clinical features. We found several genes associated with Li response at $p < 1 \times 10^{-4}$ values, including *HAS3*, *CNTNAP5* and *NFIB*. Network and functional enrichment analyses uncovered an overrepresentation of pathways involved in cell adhesion and intercellular communication, which appear to converge on the well-known Li-induced inhibition of GSK-3 β . We also found various genes associated with BP's age-at-onset, number of mood episodes, and presence of psychosis, substance abuse and/or suicidal ideation at the exploratory threshold. These included *RTN4*, *XKR4*, *NRXN1*, *NRG1/3* and *GRK5*. Additionally, PGS analyses suggested serum FAS, ECP, TRANCE and cytokine ligands, amongst others, might represent potential circulating biomarkers of Li response and clinical presentation. Taken together, our results support the notion of a relatively weak association between immunity and clinically relevant features of BP at the genetic level.

INTRODUCTION

Bipolar disorder (BP) has been associated with some degree of immune dysfunction. Epidemiological data has linked immune-related medical comorbidities, including autoimmune and metabolic diseases, and chronic low-grade inflammation with BP. In particular, increases in pro-inflammatory cytokines are observed during affective episodes in patients with BP [1]. In addition, genomic studies have revealed weak yet significant genetic correlation between BP and immune-related diseases [2]. Nevertheless, as a number of these observations originated from underpowered studies [3], further investigations are required to elucidate the proposed relationships.

Lithium (Li), mainly used in the treatment of BP, is an effective pharmacological agent in the treatment of an array of psychiatric conditions [4, 5]. In addition to its mood-stabilizing effects, Li shows anti-viral and immune cell regulatory properties [6, 7]. The immune regulatory activity of Li has been partially attributed to the modulation of pro-inflammatory cytokines and GSK-3 β . Therefore, it has been suggested that the mechanism through which Li improves symptom progression may be via anti-inflammatory effects [8, 9]. The Retrospective Assessment of the Lithium Response Phenotype Scale (Alda scale) is the most widely used clinical measure of Li response. Most often, it is dichotomized such that individuals with scores ≥ 7 are classified as "responders" and those with scores < 7 as "non-responders" [10, 11]. Using this metric, previous genetic studies have implicated human leukocyte antigen (HLA) and inflammatory cytokine genes in the response to Li treatment in BP [12, 13]. Therefore, we hypothesized that single nucleotide

polymorphisms (SNPs) in immune-related genes contribute, to some extent, to Li response and further, may impact specific clinical features within BP. To test our hypothesis, we performed association studies of a comprehensive collection of immune-related genes in 2,374 patients with BP from the International Consortium on Lithium Genetics (ConLi⁺Gen) [14]. Additionally, we tested associations with published polygenic scores (PGSs) for immune-relevant traits.

METHODS

Since our study follows a candidate approach to selected genes, pathways and networks, a diagram summarizing the methodology employed can be found in the Supplementary Figures: Figure S1.

Study sample

The ConLi⁺Gen cohort has been previously described in detail [15]. Briefly, peripheral blood samples from individuals with a diagnosis of a bipolar spectrum disorder (in accordance with the criteria established in the Diagnostic and Statistical Manual of Mental Disorders -DSM- versions III or IV) that had taken Li for a minimum of six months (with no additional mood stabilizers), were collected from 2003 to 2013. The isolated DNA was genotyped in two phases. This resulted in two sample batches originally referred to as “GWAS1” and “GWAS2”, comprising 1,162 and 1,401 individuals, respectively. Long-term responses to Li treatment were assessed in both sample batches using the Alda scale. Here, the A subscale rates the degree of response on a 10-point scale, and the B subscale reflects the relationship between improvement and treatment. A total score, ranging from 0–10, is obtained by subtracting the B score from the A score of these subscales. Negative scores are set to 0. Data on age-at-onset (AAO), age (at sample collection and phenotyping), sex and diagnostic subtype were available for both sample batches. Diagnoses included bipolar disorder type I and type II, schizoaffective bipolar disorder and bipolar disorder not otherwise specified. Additionally, information on psychiatric features, namely the number of episodes of depression, mania and hypomania, the presence of psychosis, alcohol and substance abuse, and suicidal ideation, were available for patients in the “GWAS1” batch.

The Ethics Committee at the University of Heidelberg provided central approval for the ConLi⁺Gen Consortium. Written informed consent from all participants was obtained according to the study protocols of each of the participating sites and their institutions. All procedures were performed in accordance with the guidelines of the Declaration of Helsinki.

Immune gene collection

A comprehensive set of immune-related genes was collated from gene lists available in the online databases MSigDB [16] and InnateDB [17]. From MSigDB (<https://www.gsea-msigdb.org/gsea/msigdb/>), the following gene sets contained in the C2 “curated gene sets” collection were retrieved: M1036: Reactome-innate immune system, M1058: Reactome-adaptive immune system, M39895: WikiPathways (WP)-neuroinflammation, M39711: WP-cytokines and inflammatory response, and M39641: WP-inflammatory response pathway. From InnateDB (<https://www.innatedb.com/index.jsp>), the curated gene

lists derived from the Immunology Database and Analysis Portal (ImmPort), the Immunogenetic Related Information Source (IRIS) and the Immunome Database, were downloaded. Chromosomal locations were annotated from Ensembl using the hg19 build. Herein, the combined collection is referred to as the ImmuneSet and contained 4,925 autosomal genes to be included in association analyses.

Genotype data

Schubert et al. (2021) [18] have previously described the creation of the genotype dataset used herein. Briefly, DNA samples were originally genotyped using either Affymetrix or Illumina SNP arrays. These genotype data from multiple cohorts were separately imputed using the 1000 Genomes Project reference panel phase 3 v5. Each imputed dataset underwent a basic quality control (QC) step to keep variants with minor allele frequency (MAF) > 0.01, Hardy-Weinberg equilibrium p-value (HWE) $\geq 1 \times 10^{-6}$ and imputation quality score (Rsq) ≥ 0.6 . Genotype calls were derived from the imputed dosage scores and all datasets were merged by retaining only common sets of SNPs. To update this dataset and obtain a higher number of good quality variants, we re-imputed the genotype data via the Michigan Imputation Server [19] using the Haplotype Reference Consortium (HRC) panel for European ancestry. The re-imputed genotypes underwent a QC step to keep variants with Rsq ≥ 0.8 , MAF ≥ 0.01 and HWE $\geq 1 \times 10^{-6}$. Additionally, individuals were removed if they failed the heterozygosity test and/or showed relatedness, according to the tests performed using the plinkQC R package [20]. In the latter case, one individual from each pair of related individuals (PI-HAT > 0.25) was removed. For analysis of the ImmuneSet, SNPs within each gene's boundaries (± 0 kb) were retained. The final ImmuneSet genotype datasets contained 701,031 SNPs from 1,024 and 1,350 individuals in "GWAS1" and "GWAS2", respectively.

Polygenic Scores

A set of 32 published PGSs available at the PGS Catalog [21] were used to approximate markers of inflammation and immune-related phenotypes that were not experimentally measured in the "GWAS1" ConLi⁺Gen sample. These PGSs, created and evaluated in large samples of predominantly European ancestry, stemmed from three recent publications and corresponded to the following traits: autoimmune disease [22], lymphocyte / monocyte / eosinophil / neutrophil / basophil percentage of white (blood) cells [23], and serum levels of 26 markers of inflammation [24]. After downloading and harmonizing weight files, we performed allelic scoring in ConLi⁺Gen using the sum method applied in Plink 1.9 [25].

Association analyses

The "GWAS1" (N = 853) and "GWAS2" (N = 1,258) samples were tested separately for associations of 701,031 SNPs in the ImmuneSet with: 1) Li response (responder / non-responder, defined by Alda scores ≥ 7 or < 7 , respectively), 2) total Alda score, 3) Alda subscale A, and 4) Alda subscale B (total). Because the most reliable continuous Li response phenotype has been previously shown to be the Alda A score, when excluding individuals with Alda B scores > 4 [10], we tested this as the primary continuous phenotype in our study. All association tests were performed applying an additive model in Plink 1.9, and all models were adjusted for age at recruitment, age-at-onset (AAO), sex, diagnosis and the first principal components (PCs) obtained for each ImmuneSet genotypes dataset. PCA plots were explored to

determine the optimal number of PCs to be used as covariates for each sample. Therefore, the first five PCs were used as covariates for “GWAS1” while the first six PCs were used for “GWAS2”. Population stratification due to ancestry was successfully corrected by the selected numbers of PCs (Supplementary Figures: Figure S2). Next, the association results for Li response from “GWAS1” and “GWAS2” samples were meta-analyzed using the weighted-z (METAL) method applied in Plink 1.9. These meta-analysis results were QCed to exclude variants with I^2 heterogeneity index (I) > 40 and p-value for Cochran's Q statistic (Q) < 0.1 (highly heterogeneous). We searched first for associations at the commonly accepted thresholds for GWASs (genome-wide significance, $p < 5 \times 10^{-8}$, and suggestive significance, $p < 1 \times 10^{-5}$). However, considering this a candidate gene rather than a genome-wide approach, we chose to look further into findings with $p < 1 \times 10^{-4}$, a threshold that has been previously used to select association findings for follow-up in GWASs [26] and, therefore, represents an acceptable exploratory threshold.

In “GWAS1”, the ImmuneSet was further tested for associations with other BP clinical phenotypes (i.e. AAO, the number of episodes of depression, mania and hypomania, as well as the presence of psychosis, alcohol and/or substance abuse, and suicidal ideation). These models were adjusted for age at recruitment, AAO (except when AAO was tested as phenotype), sex, diagnosis and the first five PCs. Statistical significance was considered as above.

Associations between PGSs and the various BP clinical phenotypes were tested using linear or binomial regression models, as appropriate, adjusted for age at recruitment, AAO (except when AAO was tested as phenotype), sex, diagnosis and population using the robustbase R package. Significance was set to false discovery rate (FDR) < 0.05 . However, we also looked into the nominally significant findings ($p < 0.05$) for exploratory purposes.

Downstream analyses

All variants under the $p < 1 \times 10^{-4}$ threshold were annotated for known regulatory effects on gene expression (i.e. expression quantitative trait loci, eQTLs) in all human brain, blood, spleen and thyroid tissues, as well as in immune cells (e.g. monocytes and macrophages) using Qtlizer [27].

A protein-protein interaction (PPI) network to explore the functional relevance of the identified genes associated with Li response was created using the ReactomeFIViz app [28] for Cytoscape 3.7 [29]. This analysis used as input a list composed of the ImmuneSet genes showing associations at the $p < 1 \times 10^{-4}$ threshold with the dichotomous and continuous Li response phenotypes. The network also incorporated “linker” genes (i.e. genes not in the input gene list that create indirect connections between input genes) to increase biological interpretability. Moreover, pathway overrepresentation analysis was performed on the PPI network (including linker genes) using the pathway enrichment network function of the app. Because the linker genes were not drawn from the ImmuneSet collection, we used the standard background genes of the ReactomeFIViz app for this analysis. The resulting overrepresented pathways were filtered to exclude terms that: 1) had FDR > 0.05 , 2) corresponded to a specific disease (e.g. bladder cancer, herpes virus infection), 3) had less than two genes overlapping between the pathway set and the network set,

and/or 4) the overlap with the pathway set represented less than 3% of genes in the set. Additionally, we repeated the pathway overrepresentation analysis including not only the variant mapped genes, but also the annotated eQTL genes.

For associations with clinical phenotypes in the “GWAS1” sample, functional analyses were performed using the GENE2FUNC tool of the Functional Mapping and Annotation of Genome-Wide Association Studies (FUMA-GWAS) platform [30]. The input gene lists included mapped and eQTL genes annotated for variants below the $p < 1 \times 10^{-4}$ threshold for each studied phenotype. Because eQTL genes were not drawn from our ImmuneSet collection, we used all protein-coding genes as background for these analyses. Overrepresented gene sets were those that showed $FDR < 0.05$, following a hypergeometric test, and a minimum of two overlapping genes. Curated gene sets from pathway databases in the “canonical pathways” category were preferred when available. Otherwise, Gene Ontology biological processes (GO_BPs) or any other available category (including GWAS Catalog trait associations) were taken. For GTEx-based enriched tissues of expression, as our focus is on immune-brain relationships, we kept only those enrichments corresponding to brain expression, as these are the most relevant tissues for the analysis of Li response and clinical features of BP.

In addition, the relative importance for (dichotomous) Li response of the calculated PGSs in “GWAS1” was assessed through a machine learning (ML) screening approach using the Auto Model extension of RapidMiner Studio. This applied various classification algorithms to the raw PGS data. Auto Model provides the following models: Naïve Bayes, Generalized Linear Model, Logistic Regression, Fast Large Margin, Deep Learning, Decision Tree, Random Forest, Gradient Boosted Trees and Support Vector Machines. Because ML algorithms are sensitive to class imbalance, an equal number of responder and non-responder individuals were randomly selected for the analysis ($N = 657$) using the sample method of the Python’s Pandas library. The resulting file with balanced classes was used as input for the ML screening in Auto Model, where the sample was randomly divided into training (60%) and test (40%) sets. Default parameters for all algorithms were applied. Given that different types of ML algorithms can differ in their feature selection procedure due to their inherent characteristics, here, features were considered important for Li response, with either a positive (i.e. favoring response) or a negative (i.e. favoring non-response) effect, when at least two algorithms selected the same feature with the same effect direction as important for the classification task.

RESULTS

Immune-related genes associated with response to Li treatment in BP

After excluding individuals with missing phenotypic data (age and/or AAO), the effective sample sizes for the association analyses in ConLi⁺Gen were 853 and 1,258 in “GWAS1” and “GWAS2”, respectively. A basic description of both samples is shown in Table 1. In general, there were more female than male

patients in both samples and there were minimal differences in the mean ages at recruitment and disease onset between “GWAS1” and “GWAS2”. Therefore, the total sample size of our meta-analyses of Li response was 2,111, including 606 (28.7%) responders and 1,505 non-responders for the dichotomized variable, which included 1,224 (58%) females and 887 males, with mean age 47 (\pm 14) years and mean AAO 25 (\pm 11) years. For the continuous Li response phenotype (i.e. Alda A score, excluding individuals with Alda B score > 4), the effective sample sizes were 828 for “GWAS1” and 1,044 for “GWAS2”. After the post-meta-analysis exclusion of variants with heterogeneous effects between both ConLi⁺Gen samples, a mean of 556,196 SNPs remained in each set of summary statistics. This was higher for the continuous phenotype, in which 625,818 SNPs remained.

Table 1
Description of the ConLi⁺Gen samples.

	Responders (Total Alda ≥ 7)	Non-Responders (Total Alda < 7)	Total
GWAS1			
N Effective sample (% from total)	297 (34.8)	556 (65.2)	853
N Females (%)	178 (59.9)	337 (60.6)	515 (60.4)
Age (mean \pm SD)	52 \pm 14	46 \pm 14	48 \pm 14
Age-at-onset (mean \pm SD)	28 \pm 11	23 \pm 11	25 \pm 11
# Depressive episodes (mean)	5	7	6
# Hypomanic episodes (mean)	2	6	4
# Manic episodes (mean)	4	6	5
N Psychosis cases (%)	72 (24.2)	270 (48.6)	342 (40.1)
N Alcohol abuse cases (%)	18 (6.1)	122 (21.9)	140 (16.4)
N Substance abuse cases (%)	30 (10.1)	105 (18.9)	135 (15.8)
N Suicidal ideation cases (%)	75 (25.3)	256 (46.0)	331 (38.8)
GWAS2			
N Effective sample (% from total)	309 (24.6)	949 (75.4)	1258
Females (%)	157 (50.8)	552 (58.2)	709 (56.4)
Age (mean \pm SD)	48 \pm 15	46 \pm 13	47 \pm 14
Age-at-onset (mean \pm SD)	25 \pm 10	25 \pm 11	25 \pm 11

We found no associations with Li response at the genome-wide GWAS threshold ($p < 5 \times 10^{-8}$). At the suggestive threshold for GWAS ($p < 1 \times 10^{-5}$), the dichotomous Li response phenotype and Alda B (total) showed associations with *FAT3* (best SNP: rs4313539, $p = 2.1 \times 10^{-6}$, $z = 4.744$), and with *ADAMTS5* (best SNP: rs162501, $p = 9.18 \times 10^{-7}$, $z = 4.909$) and *GRID2* (best SNP: rs62312225, $p = 2.71 \times 10^{-6}$, $z = 4.692$), respectively (Supplementary File 1: Table 1). At the exploratory threshold ($p < 1 \times 10^{-4}$), when considering

linkage disequilibrium (LD), we identified between 9 and 12 genomic loci in relation with different aspects of Li response (Supplementary File 1: Table 1). The most significant SNPs from the analyses of the dichotomous and continuous phenotypes mapped to *FAT3* and *BMPR1A*, respectively (Table 2). In total, 42 genes were implicated in the response to Li in patients with BP from our exploratory analyses in the ConLi⁺Gen cohort (Supplementary File 2: Table 1). As expected, there was a number of gene-based overlaps between different aspects of Li response, particularly between the dichotomous variable and total Alda score, and between the continuous variable and the other Alda variables.

Table 2
Summary findings from the genetic association meta-analyses of Li responses in ConLi⁺Gen.

Meta-analysis summary	Response vs No-response	Continuous Li response
# SNPs after QC	557,037	625,818
# SNPs p < 0.05	27,426	31,489
# SNPs p < 1x10 ⁻⁴	124	33
# Lead SNPs	11	11
Top lead SNP	rs4313539	rs12776537
Effect allele	C	A
p-value	2.1x10 ⁻⁶	2.5x10 ⁻⁵
Z	4.7	-4.2
Gene	<i>FAT3</i>	<i>BMPR1A</i>
# SNPs p < 1x10 ⁻⁵	15	0

Twenty-four ImmuneSet genes were implicated in the primary Li response phenotypes (i.e. dichotomous and continuous) in our exploratory analysis (Fig. 1A). These were used as input for a network analysis to facilitate biological interpretation of the findings. This network analysis provided known and predicted functional interactions between a subset of 21 input genes from our association results and 16 linkers drawn from the total of protein-coding genes in the background reference of the ReactomeFiViz app (Fig. 1B). Functional analysis of the network uncovered an overrepresentation of crucial developmental pathways and regulatory networks, suggesting the involvement of processes such as assembly and stability of the cell-cell signaling machinery (e.g. adherens junction, E-cadherin signaling, focal adhesion, integrin signaling, L1 cell adhesion molecule signaling), neuronal development and function (e.g. neurotrophic signaling, lysophosphatidic acid receptor mediated events, regulation of pluripotency, Wnt signaling), as well as activation of inflammatory (e.g. sphingolipid signaling, S1P pathways, toll-like receptor signaling) and adaptive immune pathways (e.g. T and B cell receptor signaling) in the biological response to Li. Interestingly, processes such as angiogenesis, long-term potentiation, thyroid hormone

signaling pathways, melanogenesis and sensory processing were also overrepresented in our network analysis (Supplementary File 2: Table 2). These observations suggest that variation in immune-related genes and its effects that expand beyond inflammatory and immune responses from early developmental stages contribute to determine the extent of the organism's response to Li treatment in patients with BP. Moreover, when eQTL genes were incorporated into the analysis, there was a marked overrepresentation of inflammatory and autoimmune disease pathways (e.g. asthma, type 1 diabetes mellitus, autoimmune thyroid disease, inflammatory bowel disease) and of vitamin D metabolism. The Wnt signaling, cell adhesion and adaptive immune pathways remained significantly overrepresented (data not shown). All protein-coding eQTL genes annotated for Li response phenotypes are shown in Fig. 2A.

Immune-related genes associated with clinical phenotypes in BP

The association analyses of the ImmuneSet with specific clinical features that were available for the "GWAS1" sample showed no associations at the genome-wide GWAS threshold. However, at the suggestive GWAS threshold there were, collectively, 100 associations between the ImmuneSet and AAO (3), number of depressive (54) and manic (14) episodes, and the presence of psychosis (1), substance use disorder (15) and/or suicidal ideation (13). These implicated 17 genes that associated to specific clinical features (i.e. no overlaps were observed at this threshold Table 3). When we moved forward to the exploratory analysis, we identified 786 SNP-phenotype associations in total (Supplementary File 1: Tables 2–9). These implicated 166 immune-related genes (Fig. 1A; Supplementary File 2: Table 1) mostly involved in adaptive immunity and inflammation. Beyond their immune functions, however, these genes play important roles in the development of the nervous system, signal transduction, synaptic processes and cell adhesion (Supplementary File 2: Tables 3–9). In particular, large numbers of associations were found for AAO and mood episodes (Table 3). In addition, 156 eQTL genes were collectively annotated for these phenotypes. Figure 2A shows the protein-coding eQTL genes annotated for each clinical feature. Even when these showed no overlaps among the clinical phenotypes, there were some overlaps with the ImmuneSet genes meaning that, in some instances, the eQTL gene corresponded to the gene mapped to the variant while, in others, the eQTL gene was different from the mapped gene. A summary of exploratory findings for each clinical phenotype studied is shown below.

Table 3

Summary of findings from the association analyses of the ImmuneSet with clinical characteristics in the ConLi+Gen "GWAS1" sample.

Phenotype	N	Exploratory threshold ($p < 1e-4$)		Suggestive GWAS threshold ($p < 1e-5$)		Genes	Top gene	
		# SNPs	# Genes	# SNPs	# Genes		Symbol	Pval
Age-at-onset	853	54	21	3	2	GRK5, PLD3	GRK5	3.9×10^{-6}
# Depressive episodes	692	107	31	54	6	BLNK, PHLPP1, ZCCHC11, SACS, CPPED1, PRPF38A	BLNK	1.7×10^{-7}
# Manic episodes	665	116	32	14	4	CNTN6, KALRN, LY86, PTK2B	CNTN6	2.4×10^{-6}
Psychosis	692	45	13	1	1	DSCAM	DSCAM	7.6×10^{-6}
Alcohol abuse	835	29	9	0	0	-	SCD5	1.8×10^{-5}
Substance abuse	832	78	17	15	3	TPD52, NOD1, XKR4	TPD52	4.5×10^{-7}
Suicidal ideation	660	30	7	13	1	JARID2	JARID2	3.9×10^{-6}

Age-at-onset. Fifty-four associations in 21 ImmuneSet genes were found for AAO in our study (Table 3, Supplementary File 1: Table 2). These genes were enriched for negative regulation of cell death and synaptic transmission, as well as expression in the cerebellum (Supplementary File 2: Table 3). The top variant, rs1248079 ($p = 3.9 \times 10^{-6}$, $\beta = 2.75$), mapped to an intronic region in *GRK5* (G Protein-Coupled Receptor Kinase 5). Other important genes included *PLD3*, *AKT2* and *IL1B*. The addition of eQTL genes to the functional enrichment analysis resulted in an additional overrepresentation of processes related to cellular stress responses.

Depression. With an effective sample of 692 individuals, 107 associations in 31 ImmuneSet genes for the number of depressive episodes were found (Table 3, Supplementary File 1: Table 3). These genes were enriched for synaptic processes, as well as expression in frontal and anterior cingulate cortices (Supplementary File 2: Table 4). While the top variant, rs55975329 ($p = 1.7 \times 10^{-7}$, $\beta = 4.54$), localized to an intron in *BLNK* (B cell linker), other important genes included *PHLPP1*, *ZCCHC11* (*TUT4*) and *CPPED1*.

The addition of eQTL genes to the functional enrichment analysis resulted in an additional overrepresentation of axonal and synaptic components.

Table 4

Prioritized ImmuneSet candidate genes for Li response and clinical characteristics in ConLi⁺Gen.

Gene	Chr	Start	End	Priority	Phenotypes
<i>ALK</i>	2	29415640	30144432	Psychiatric	Depression, Mania
<i>NRXN1</i>	2	50145643	51259674	Psychiatric	Depression, Hypomania, Substance
<i>RTN4</i>	2	55199325	55339757	Psychiatric	Mania, Psychosis
<i>CNTNAP5</i>	2	124025287	124915287	Li response	LiResponse, Alda_B, Alda_Total
<i>LRP1B</i>	2	140988992	142889270	Psychiatric	AAO, Mania
<i>ROBO2</i>	3	75906695	77649964	Both	Alda_Total, Hypomania, Substance
<i>BANK1</i>	4	101411286	102074812	Both	Continuous.LiResp, Alda_A, Alda_B, Alda_Total, Hypomania
<i>CDH12</i>	5	21750673	22853622	Both	LiResponse, Suicide
<i>DSP</i>	6	7541575	7586717	Li response	Continuous.LiResp, Alda_Total
<i>NPSR1-AS1</i>	7	34386124	34911194	Psychiatric	Depression, Suicide
<i>CNTNAP2</i>	7	146116002	148420998	Both	LiResponse, Alda_Total, Mania
<i>NRG1</i>	8	31496902	32622548	Psychiatric	Mania, Substance
<i>XKR4</i>	8	56014949	56454613	Psychiatric	Depression, Mania, Psychosis, Substance
<i>NFIB</i>	9	14081843	14398983	Li response	Continuous.LiResp, Alda_B
<i>NRG3</i>	10	83635070	84746935	Psychiatric	Alcohol, Psychosis
<i>BMPR1A</i>	10	86756601	86932838	Li response	Continuous.LiResp, Alda_A
<i>GRK5</i>	10	120967101	121215131	Psychiatric	AAO, Depression
<i>FAT3</i>	11	92352096	92896470	Both	LiResponse, Alda_Total, Depression
<i>PCDH9</i>	13	66302834	67230445	Both	Alda_B, Mania, Substance
<i>CPPED1</i>	16	12756919	12897874	Psychiatric	AAO, Depression
<i>HAS3</i>	16	69105564	69118719	Li response	Continuous.LiResp, Alda_A, Alda_Total

Hypomania. Although the largest associations were found for the number of hypomanic episodes, these observations were based on only 85 individuals with available data. Therefore, we have excluded this phenotype from the figures and tables shown within this manuscript. All corresponding results are provided in the supplementary material (Supplementary File 1: Table 4, Supplementary File 2: Table 5).

Mania. With an effective sample of 665 individuals, 116 associations in 32 ImmuneSet genes for the number of manic episodes were found (Table 3, Supplementary File 1: Table 5). These genes were enriched for neuronal development and differentiation, as well as expression in spinal cord and frontal cortex (Supplementary File 2: Table 6). The top variant, rs59134172 ($p = 2.4 \times 10^{-6}$, $\beta = 1.62$), localized to an intron in *CNTN6* (Contactin 6). Other important genes included *KALRN*, *PCDH9*, *PTK2B* and *CNTNAP2*. Interestingly, we also found enrichment for response to serotonin re-uptake inhibitors in major depressive disorder (FDR = 0.042) and serum thyroid-stimulating hormone levels (FDR = 0.0028), from the GWAS Catalog trait associations, in mania-associated ImmuneSet genes. The addition of eQTL genes to the functional enrichment analysis had no impact on the overrepresented gene set classes.

Psychosis. The effective sample for our analysis of the presence of psychosis in BP was 692 individuals. Here, 45 associations in 13 genes were identified (Table 3, Supplementary File 1: Table 6). The implicated genes were enriched for cell adhesion and synapse organization, as well as expression in frontal cortex (Supplementary File 2: Table 7). The top SNP, rs459374 ($p = 7.6 \times 10^{-6}$, $\beta = 1.96$), is located in an intronic region of *DSCAM* (DS Cell Adhesion Molecule). Other interesting genes included *CLSTN2*, *RTN4* and *CDH13*. Moreover, the GWAS Catalog traits seasonality and depression (FDR = 0.02), and response to amphetamines (FDR = 0.026), as well as obesity-related traits (FDR = 0.015), atrial fibrillation (FDR = 0.027) and diastolic blood pressure (FDR = 0.027) were enriched among the psychosis-associated genes. The addition of eQTL genes to the functional enrichment analysis had no impact on the overrepresented processes. However, this resulted in a considerable increase in overrepresented brain tissues of expression, including the hippocampus, amygdala, hypothalamus, anterior cingulate cortex, putamen and substantia nigra.

Alcohol and substance abuse. The effective sample sizes for alcohol and substance use disorders in ConLi⁺Gen were 835 and 832, respectively. Twenty-nine SNPs in nine genes were associated with alcohol use, with the rs7698751 SNP in *SCD5* (Stearoyl-CoA Desaturase 5) being the top association ($p = 1.8 \times 10^{-5}$, $\beta = 2.61$). Although no gene set enrichments were found for associations with alcohol abuse, other implicated genes included the BP-associated *DGKH*, *NRG3* and *RIMS1* (Supplementary File 1: Table 7). Interestingly, when incorporating the eQTLs genes into this functional analysis, overrepresentation of genes associated with mood swings, loneliness and anxious behaviors in the GWAS Catalog was observed (Supplementary File 2: Table 8). For substance use disorder, 78 associations implicating 17 genes were found (Supplementary File 1: Table 8). Genes were overrepresented in neurogenesis-related processes, with expression in cerebellum as well as frontal and anterior cingulate cortices (Supplementary File 2: Table 8). The top variant, rs7814474 ($p = 4.5 \times 10^{-7}$, $\beta = 6.7$), was mapped to an intron in *TPD52* (Tumor Protein D52). Other genes included the BP-associated *NRG1*, the schizophrenia-

associated *PTPRM*, as well as *NOD1* and *PRKCQ*. In addition, the GWAS Catalog traits chronotype (FDR = 0.011) and serum thyroid-stimulating hormone levels (FDR = 0.047) were also overrepresented in substance abuse-associated ImmuneSet genes. The addition of eQTL genes to the functional enrichment analysis resulted in an additional overrepresentation of the phosphatidylinositol signaling system and expression in the amygdala, hippocampus and basal ganglia.

Suicidal ideation. Information on the presence of suicidal thoughts was available for 660 ConLi⁺Gen individuals. Based on these, 30 variants in seven genes were associated with suicidal ideation in the “GWAS1” sample (Table 3, Supplementary File 1: Table 9). The top SNP was rs2327882 ($p = 3.9 \times 10^{-6}$, $\beta = 0.55$), located in an intron of the *JARID2* (Jumonji and AT-Rich Interaction Domain Containing 2) gene. Gene set enrichment analysis found overrepresentation of functions of nuclear receptors (Supplementary File 2: Table 9). Indeed, these terms related to *RARB* and *THRB*. The addition of eQTL genes to the functional enrichment analysis had no impact on the overrepresented gene set classes.

Immune-related genes showed pleiotropy for BP phenotypes

Not surprisingly, a number of genes showed shared associations with the different phenotypes included in our exploratory ImmuneSet analyses in ConLi⁺Gen (Fig. 1A). Therefore, these genes can be prioritized for follow-up studies due to their pleiotropic effects in Li response, clinical features, or both. In this way, we prioritized 21 genes that showed associations with more than one BP phenotype (Table 4). Here, we excluded genes associated with Alda A, total Alda B and/or Total Alda when there was no overlap with the dichotomous and/or continuous Li response phenotypes. However, a complete list of corresponding gene-phenotype associations (197 in total) is shown in Supplementary File 2: Table 1. Five of the prioritized genes (*CNTNAP5*, *DSP*, *NFIB*, *BMPR1A*, and *HAS3*) were associated with multiple Li response phenotypes, 10 of them (*XKR4*, *NRXN1*, *RTN4*, *NRG1/3*, *ALK*, *GRK5*, *LRP1B*, *NPSR1-AS1* and *CPPED1*) were associated with multiple clinical features, and another six genes (*BANK1*, *ROBO2*, *CNTNAP2*, *PCDH9*, *CDH12* and *FAT3*) were associated with Li response as well as with clinical features.

Polygenic scores for immune-related traits associated with BP phenotypes

In addition to testing associations of the ImmuneSet with BP phenotypes, we calculated a set of 32 previously published immune-related PGSs, namely for: 1) (general) autoimmune disease, 2) the proportions of white blood cell populations and 3) inflammatory marker levels in serum (Supplementary File 2: Table 10). The overlap of variants between the PGS weight files obtained from PGS Catalog and the SNPs available in our ConLi⁺Gen “GWAS1” sample was, in general, better for the serum levels of inflammatory markers (80.6% in average) than for the other PGSs. The lowest valid SNP overlap was found for the PGS of general autoimmune disease (38.8%), suggesting that this PGS may relatively poorly index autoimmune disease signatures. For the proportion of white blood cell populations, the valid SNP overlap was also not fully satisfactory (49.4% in average). Nevertheless, we were able to obtain

some valuable insights by using these scores (Fig. 2B). We found associations (FDR < 0.05) of the PGSs for CXCL1 (C-X-C Motif Chemokine Ligand 1; $z = 14.9$, $p < 2 \times 10^{-6}$), ECP (Eosinophilic Cationic Protein; $z = 3.7$, $p = 2.4 \times 10^{-4}$), FAS (Fas Cell Surface Death Receptor; $z = -5.9$, $p = 5.6 \times 10^{-9}$) and TRANCE/TNFSF11 (TNF-related Activation-induced Cytokine/TNF Superfamily Member 11; $z = 3.4$, $p = 0.0007$) with the continuous Li response variable. No associations with the dichotomous variable survived correction for multiple comparisons. However, ML-based PGS ranking for the dichotomized Li response added another level of support to the links with CCL4 and ECP, and suggested relative importance of HSP27 (Heat Shock Protein Family B (Small) Member 1), CHI3L1 (Chitinase 3 Like 1), TNFR1, TRAILR2 and TNFSF14 (TNF Superfamily Member 14) for the prediction of responses to Li treatment in ConLi⁺Gen (Supplementary Figures: Figure S3). The PGSs for CCL4 (C-C Motif Chemokine Ligand 4; $z = 5.4$, $p = 7.5 \times 10^{-8}$) and TRAIL/TNFSF10 (TNF-related apoptosis-inducing ligand/TNF Superfamily Member 10; $z = 3.6$, $p = 3.7 \times 10^{-4}$) were associated with disease AAO. For the number of episodes of depression, we found associations with the PGSs for CXCL1 ($z = 6.5$, $p = 1.3 \times 10^{-10}$), CXCL6 (C-X-C Motif Chemokine Ligand 6; $z = -12.2$, $p < 2 \times 10^{-6}$), ECP ($z = -11.8$, $p < 2 \times 10^{-6}$), GAL3 (Galectin 3; $z = -20.1$, $p < 2 \times 10^{-6}$), and TNFR1/TNFRSF1A (TNF Receptor Superfamily Member 1A; $z = 21.9$, $p < 2 \times 10^{-6}$). The number of episodes of mania were associated with the PGSs for eosinophils ($z = -2.9$, $p = 0.003$), CSF1 (Colony Stimulating Factor 1; $z = -3.4$, $p = 7.7 \times 10^{-4}$), CXCL1 ($z = -4.1$, $p = 4.6 \times 10^{-5}$), CXCL6 ($z = 3.9$, $p = 1.1 \times 10^{-4}$), CXCL16 ($z = 3.9$, $p = 1.2 \times 10^{-4}$), FAS ($z = -3.3$, $p = 0.0012$) and TRANCE ($z = -3.8$, $p = 1.5 \times 10^{-4}$). Finally, the PGSs for TRAILR2/TNFRSF10B (TNF Receptor Superfamily Member 10b; $z = -4.6$, $p = 5.1 \times 10^{-6}$) and TRANCE ($z = -5.2$, $p = 2.1 \times 10^{-7}$) were associated with the presence of psychosis in patients with BP. A number of associations between PGSs for immune-relevant blood traits and clinically-relevant BP features remained only suggested, as these did not survive correction for multiple comparisons (Supplementary File 2: Table 10).

DISCUSSION

There is apparent mounting evidence of immune dysregulation in BP and other major psychiatric diseases. Nevertheless, some observations have originated from underpowered studies, resulting in a lack of reproducibility [3]. Therefore, it becomes crucial to gain a better understanding of the relationships between the immune and central nervous systems, and to discern between causes and consequences of disease. In very general terms, it can be assumed that the existence of genetic associations with a given phenotype indicates causal contributions of the associated loci to the studied phenotype. With this in mind, we sought to investigate how genetic factors relevant to immune activity relate to disease phenotypes, such as response to Li treatment, AAO and psychiatric symptoms, in patients with BP. Using an exploratory and extensive candidate gene approach, our study prioritized various genes and inflammatory markers that appeared to represent pleiotropic factors contributing to multiple phenotypes. However, we should note that, here, we refer to pleiotropy as the (suggested) association with multiple traits in the ConLi⁺Gen cohort and, by no means, have we implied that these features are independent from each other. In fact, it should be expected that, given the important correlation between psychiatric

disorders, the features that we have studied in ConLi⁺Gen are, to some extent, also correlated with each other. Also, because genes can play different roles in different tissues and cell types, we observed widespread enrichments of biological pathways participating in the development and function of the brain. This suggested that the genes implicated in BP phenotypes might affect in parallel both the immune and nervous systems. Nevertheless, because we found no associations at the genome-wide GWAS threshold of significance, and those observed at the suggestive GWAS threshold were limited, our findings are also consistent with a relatively weak effect of immune genetic factors over BP phenotypes.

The results of our exploratory assessment of associations of genetic polymorphisms in immune-related genes with Li response in the ConLi⁺Gen cohort suggest that variations in inflammatory and adaptive immune processes might contribute to the efficiency of the response to Li treatment in patients with BP. Importantly, our network and gene set enrichment analysis uncovered an involvement of numerous biological pathways that participate in cell adhesion, migration and intercellular communication, helping in the development and maintenance of the central and peripheral nervous systems, as well as of the immune and vascular systems. Interestingly, many of these appear to converge in the participation of GSK-3 β (glycogen synthase kinase-3 beta), as assessed through comparative overlap analysis of the enriched KEGG and Reactome gene sets. GSK-3 β is involved in multiple major developmental pathways, such as the Wnt, Notch and Hedgehog signaling pathways. Genetic manipulation in mouse models has shown an antidepressant-like behavior upon GSK-3 β knockdown in hippocampus, as well as cognitive, behavioral and biochemical changes associated with psychiatric disorders, including Alzheimer's disease, BP and schizophrenia, upon GSK-3 β overexpression [31]. Li possesses a well-known inhibitory effect over GSK-3 β [32]. Therefore, our analysis suggests that GSK-3 β might be highly relevant for the response to Li treatment in BP. Our findings are also in agreement with other epidemiological and molecular investigations of Li effects. For example, we repeatedly observed overrepresentation of gene sets related to thyroid function, such as thyroid-stimulating hormone signaling and autoimmune thyroid disease. This is in line with the reports of a reversible association of Li treatment with hypothyroidism, particularly in women [33, 34].

Taken together, the encouraging literature supporting our findings sparked our interest in exploring how a genetic measure (PGS) for inflammatory marker levels in serum might associate with Li response in ConLi⁺Gen. Our results supported a relationship between Li treatment response and the genetic influence on the levels of various inflammatory markers circulating in serum. These included CXCL1, ECP, FAS, TRANCE and CCL4, molecules that regulate the activation and recruitment of immune cells (T and B lymphocytes, monocytes, macrophages, neutrophils and eosinophils).

The results of our exploratory assessment of associations of genetic polymorphisms in the ImmuneSet genes with BP's AAO, numbers of mood episodes and psychiatric comorbidities in ConLi⁺Gen identified various candidate genes particularly contributing to mood episodes and substance abuse, including *XKR4*, *NRXN1*, *GRK5* and *NRG1/3*. These genes, besides their immune-related functionalities, seem to play important roles in neuronal development and function, according to our gene set enrichment analyses. Indeed, this could be corroborated by the literature in many instances. For example, *NRXN1*, a

cell surface protein involved in cell-cell interactions, exocytosis of secretory granules and regulation of signal transmission, has been associated with autism, schizophrenia and nicotine dependence [35]. *GRK5* has a role in the regulation of motility in polymorphonuclear leukocytes and inflammation [36, 37]. It also regulates the activity of various G-protein coupled receptors, including neurotransmitter receptors [38]. *XKR4*, a phospholipid scramblase strongly expressed in brain tissue and activated by caspases, has been suggested to participate in the remodeling of neural networks by triggering microglial responses to the exposure of phosphatidylserine on axons, dendrites and synapses [39].

It is worth noting that three of our candidate genes for depressive episodes have previously shown associations with either major depression at the gene-level (*DCC*) [40] or mapped to schizophrenia loci (*CR1L* and *DGKI*) [41] in large GWASs. Moreover, one of our candidate genes for manic episodes, *ESR2*, and one for substance use disorder, *BTN3A2*, were previously associated at the gene-level with major depression in the large GWAS, while one of our candidates for hypomanic episodes and alcohol dependence, the BP-associated *RIMS1* [26], mapped previously to schizophrenia loci. This, together with the overlaps with reported BP-associated genes that we observed, particularly concerning known eQTL genes, provides another level of support to the validity of our findings.

Additionally, the results of our exploratory assessment of PGS associations led to interesting observations. For example, that activation of macrophages and neutrophils, reflected by the associations with the PGSs for various cytokines and chemokines produced by or targeting these cells (e.g. interleukin-8, CX3CL1, CXCL6/16), might contribute to disease AAO in ConLi⁺Gen. Indeed, these observations are supported by studies that have found increases in neutrophil counts in psychiatric disorders, including BP [42, 43], as well as association of genetic polymorphisms in interleukin-1 β , a pro-inflammatory cytokine produced by activated immune cells, including neutrophils and macrophages, with age of onset of depression in geriatric patients [44]. In addition, if we consider that macrophage/neutrophil activation was also a suggested mechanism of Li response in our study, it would be easy to speculate that activation of these cells might be linked with some aspect of the disease onset.

In conclusion, we performed an exploratory study that indicates a relationship between immunity and clinically relevant BP phenotypes at the genetic level, and pinpoints various interesting candidates for follow-up studies. We acknowledge that our study was limited by a relatively small sample size, particularly for the episodes of hypomania, and by incomplete overlap between the variants in the PGSs and our ConLi⁺Gen dataset. The latter, which likely resulted from a limited overlap among the different SNP arrays initially used to genotype samples in different collection centers, caused an incomplete indexing of the immune phenotypes of interest, and a relatively low rate of survival of correction for multiple comparisons in the PGS-BP phenotype relationships. Nevertheless, despite inherent limitations, we believe that our study provides valuable insight and furthers the understanding of the immune implications in BP. These results complement the evidence coming from epidemiological data and previous findings in ConLi⁺Gen, and support the hypothesis that, to some extent, immune regulation might represent a feasible strategy to improve the symptomatology and treatment response in patients with BP.

Declarations

Funding

The project received funding from the programme "Profilbildung 2020", an initiative of the Ministry of Culture and Science of the State of Northrhine Westphalia. The sole responsibility for the content of this publication lies with the authors.

The primary sources of funding for ConLi⁺Gen were grants RI 908/7-1, FOR2107 and RI 908/11-1 from the Deutsche Forschungsgemeinschaft (Marcella Rietschel) and grant NO 246/10-1 (Markus M. Nöthen) and grant ZIA-MH00284311 from the Intramural Research Program of the National Institute of Mental Health (ClinicalTrials.gov identifier: NCT00001174). The genotyping was funded in part by the German Federal Ministry of Education and Research through the Integrated Network IntegraMent (Integrated Understanding of Causes and Mechanisms in Mental Disorders), under the auspices of the e:Med Programme (Thomas G. Schulze, Marcella Rietschel and Markus M. Nöthen). The Canadian part of the study was supported by grant #166098 from the Canadian Institutes of Health Research and by a grant from Genome Atlantic/Research Nova Scotia (Martin Alda). Collection and phenotyping of the Australian University of New South Wales sample was funded by Program Grant 1037196 from the Australian National Health and Medical Research Council (Philip B. Mitchell, Peter R. Schofield, Janice M. Fullerton), and acknowledges support from Lansdowne Foundation, Betty Lynch OAM (dec) and the Janette Mary O'Neill Fellowship. Azmeraw T. Amare is supported by the 2019–2021 National Alliance for Research on Schizophrenia and Depression (NARSAD) Young Investigator Grant from the Brain & Behaviour Research Foundation (BBRF) and National Health and Medical Research Council (NHMRC) Emerging Leadership Investigator Grant 2021 – 2008000. The collection of the Barcelona sample was supported by grants PI080247, PI1200906, PI12/00018, 2014SGR1636, 2014SGR398, and MSII14/00030 from the Centro de Investigación en Red de Salud Mental, Institut d'Investigacions Biomèdiques August Pi i Sunyer, the Centres de Recerca de Catalunya Programme/Generalitat de Catalunya, and the Miguel Servet II and Instituto de Salud Carlos III. The Swedish Research Council, the Stockholm County Council, Karolinska Institutet and the Söderström-Königskas Foundation supported this research through grants awarded to Lena Backlund, Louise Frisen, Catharina Lavebratt and Martin Schalling. The collection of the Geneva sample was supported by grants Synapsy–The Synaptic Basis of Mental Diseases 51NF40-158776 and 32003B-125469 from the Swiss National Foundation. The work by the French group was supported by INSERM (Institut National de la Santé et de la Recherche Médicale), AP-HP (Assistance Publique des Hôpitaux de Paris), the Fondation FondaMental (RTRS Santé Mentale), and the labex Bio-PSY (Investissements d'Avenir program managed by the ANR under reference ANR-11-IDEX-0004-02). The collection of the Romanian sample was supported by a grant from UEFISCDI, Bucharest, Romania (grants PCCA-89/2012; PCE-203/2021) to Maria Grigoriu-Serbanescu. The collection of the Czech sample was supported by the project Nr. LO1611 with a financial support from the MEYS under the NPU I program and by the Czech Science Foundation, grant Nr. 17-07070S. Biju Viswanath is funded by the Intermediate (Clinical and PublicHealth) Fellowship (IA/CPHI/20/1/505266) of the DBT/Wellcome Trust India Alliance.

Author contributions

MHR processed and analyzed the data, and prepared the manuscript. KGF performed the machine learning screenings. BTB conceived the study and critically revised the manuscript. All ConLi⁺Gen members contributed clinical and genetic data. All authors provided overall feedback on the manuscript.

Conflict of interests

Eduard Vieta has received grants and served as consultant, advisor or CME speaker for the following entities: AB-Biotics, Abbvie, Ammirall, Allergan, Angelini, AstraZeneca, Bristol-Myers Squibb, Dainippon Sumitomo Pharma, Farindustria, Ferrer, Forest Research Institute, Gedeon Richter, GH Research, Glaxo-Smith-Kline, Janssen, Lundbeck, Orion, Otsuka, Pfizer, Roche, Rovi, Sanofi-Aventis, Servier, Shire, Sunovion, Takeda, the Brain and Behaviour Foundation, the Spanish Ministry of Science and Innovation (CIBERSAM), the Stanley Medical Research Institute and Viatrix. Michael Bauer has received grants from the Deutsche Forschungsgemeinschaft (DFG), and Bundesministeriums für Bildung und Forschung (BMBF), and served as consultant, advisor or CME speaker for the following entities: Allergan, Aristo, Janssen, Lilly, Lundbeck, neuraxpharm, Otsuka, Sandoz, Servier and Sunovion outside the submitted work. Sarah Kittel-Schneider has received grants and served as consultant, advisor or speaker for the following entities: Medice Arzneimittel Pütter GmbH and Takeda. Bernhard Baune has received grants and served as consultant, advisor or CME speaker for the following entities: AstraZeneca, Bristol-Myers Squibb, Janssen, Lundbeck, Otsuka, Servier, the National Health and Medical Research Council, the Fay Fuller Foundation, the James and Diana Ramsay Foundation. Tadafumi Kato received honoraria for lectures, manuscripts, and/or consultancy, from Kyowa Hakko Kirin Co, Ltd, Eli Lilly Japan K.K., Otsuka Pharmaceutical Co, Ltd, GlaxoSmithKline K.K., Taisho Toyama Pharmaceutical Co, Ltd, Dainippon Sumitomo Pharma Co, Ltd, Meiji Seika Pharma Co, Ltd, Pfizer Japan Inc., Mochida Pharmaceutical Co, Ltd, Shionogi & Co, Ltd, Janssen Pharmaceutical K.K., Janssen Asia Pacific, Yoshitomiyakuhin, Astellas Pharma Inc, Wako Pure Chemical Industries, Ltd, Wiley Publishing Japan, Nippon Boehringer Ingelheim Co Ltd, Kanae Foundation for the Promotion of Medical Science, MSD K.K., Kyowa Pharmaceutical Industry Co, Ltd and Takeda Pharmaceutical Co, Ltd. Tadafumi Kato also received a research grant from Takeda Pharmaceutical Co, Ltd. Peter Falkai has received grants and served as consultant, advisor or CME speaker for the following entities Abbott, GlaxoSmithKline, Janssen, Essex, Lundbeck, Otsuka, Gedeon Richter, Servier and Takeda as well as the German Ministry of Science and the German Ministry of Health. Eva Reininghaus has received grants and served as consultant, advisor or CME speaker for the following entities: Janssen and Institut Allergosan. Mikael Landén has received lecture honoraria from Lundbeck. Kazufumi Akiyama has received consulting honoraria from Taisho Toyama Pharmaceutical Co, Ltd. Scott Clark has received grants and served as consultant, advisor or CME speaker for the following entities: Otsuka Australia, Lundbeck Australia, Janssen-Cilag Australia, Servier Australia. The rest of authors have no conflicts of interest to disclose.

References

1. Rosenblat JD, McIntyre RS. Bipolar Disorder and Immune Dysfunction: Epidemiological Findings, Proposed Pathophysiology and Clinical Implications. *Brain Sci.* 2017;7(11):144.
2. Tylee DS, Sun J, Hess JL, et al. Genetic correlations among psychiatric and immune-related phenotypes based on genome-wide association data. *Am J Med Genet B Neuropsychiatr Genet.* 2018;177(7):641–657.
3. Yuan N, Chen Y, Xia Y, Dai J, Liu C. Inflammation-related biomarkers in major psychiatric disorders: a cross-disorder assessment of reproducibility and specificity in 43 meta-analyses. *Transl Psychiatry.* 2019;9(1):233.
4. Bauer M. Lithium: What can we do to overcome the discrepancies between evidence, guideline recommendations and clinical practice? *Eur Neuropsychopharmacol.* 2022 Jul;60:1–3.
5. Rybakowski JK. Lithium. *Eur Neuropsychopharmacol.* 2022;57:86–87.
6. Spuch C, López-García M, Rivera-Baltanás T, Rodríguez-Amorím D, Olivares JM. Does Lithium Deserve a Place in the Treatment Against COVID-19? A Preliminary Observational Study in Six Patients, Case Report. *Front Pharmacol.* 2020;11:557629.
7. Landén M, Larsson H, Lichtenstein P, Westin J, Song J. Respiratory infections during lithium and valproate medication: a within-individual prospective study of 50,000 patients with bipolar disorder. *Int J Bipolar Disord.* 2021;9(1):4.
8. Nassar A, Azab AN. Effects of lithium on inflammation. *ACS Chem Neurosci.* 2014;5(6):451–458.
9. Queissner R, Lenger M, Birner A, et al. The association between anti-inflammatory effects of long-term lithium treatment and illness course in Bipolar Disorder. *J Affect Disord.* 2021;281:228–234.
10. Manchia M, Adli M, Akula N, et al. Assessment of Response to Lithium Maintenance Treatment in Bipolar Disorder: A Consortium on Lithium Genetics (ConLiGen) Report. *PLoS One.* 2013;8(6):e65636.
11. Nunes A, Trappenberg T, Alda M; international Consortium on Lithium Genetics (ConLiGen). Asymmetrical reliability of the Alda score favours a dichotomous representation of lithium responsiveness. *PLoS One.* 2020 Jan 27;15(1):e0225353.
12. International Consortium on Lithium Genetics (ConLi + Gen), Amare AT, Schubert KO, et al. Association of Polygenic Score for Schizophrenia and HLA Antigen and Inflammation Genes With Response to Lithium in Bipolar Affective Disorder: A Genome-Wide Association Study. *JAMA Psychiatry.* 2018;75(1):65–74.
13. Le Clerc S, Lombardi L, Baune BT, et al. HLA-DRB1 and HLA-DQB1 genetic diversity modulates response to lithium in bipolar affective disorders. *Sci Rep.* 2021;11(1):17823.
14. Schulze TG, Alda M, Adli M, et al. The International Consortium on Lithium Genetics (ConLiGen): an initiative by the NIMH and IGSLI to study the genetic basis of response to lithium treatment. *Neuropsychobiology.* 2010;62(1):72–78.
15. Hou L, Heilbronner U, Degenhardt F, et al. Genetic variants associated with response to lithium treatment in bipolar disorder: a genome-wide association study. *Lancet.* 2016;387(10023):1085–1093.

16. Liberzon A, Subramanian A, Pinchback R, Thorvaldsdóttir H, Tamayo P, Mesirov JP. Molecular signatures database (MSigDB) 3.0. *Bioinformatics*. 2011;27(12):1739–1740.
17. Breuer K, Foroushani AK, Laird MR, et al. InnateDB: systems biology of innate immunity and beyond—recent updates and continuing curation. *Nucleic Acids Res*. 2013;41(Database issue):D1228-D1233.
18. Schubert KO, Thalamuthu A, Amare AT, et al. Combining schizophrenia and depression polygenic risk scores improves the genetic prediction of lithium response in bipolar disorder patients [published correction appears in *Transl Psychiatry*. 2022;12(1):278]. *Transl Psychiatry*. 2021;11(1):606.
19. Das S, Forer L, Schönherr S, et al. Next-generation genotype imputation service and methods. *Nat Genet*. 2016;48(10):1284–1287.
20. Meyer HV. plinkQC: Genotype quality control in genetic association studies. 2020. DOI 10.5281/zenodo.3934294.
21. Lambert SA, Gil L, Jupp S, et al. The Polygenic Score Catalog as an open database for reproducibility and systematic evaluation. *Nat Genet*. 2021;53(4):420–425.
22. Weissbrod O, Kanai M, Shi H, et al. Leveraging fine-mapping and multipopulation training data to improve cross-population polygenic risk scores. *Nat Genet*. 2022;54(4):450–458.
23. Xu Y, Vuckovic D, Ritchie SC, et al. Machine learning optimized polygenic scores for blood cell traits identify sex-specific trajectories and genetic correlations with disease. *Cell Genom*. 2022;2(1):None.
24. Folkersen L, Gustafsson S, Wang Q, et al. Genomic and drug target evaluation of 90 cardiovascular proteins in 30,931 individuals. *Nat Metab*. 2020;2(10):1135–1148.
25. Chang CC, Chow CC, Tellier LC, Vattikuti S, Purcell SM, Lee JJ. Second-generation PLINK: rising to the challenge of larger and richer datasets. *Gigascience*. 2015;4:7.
26. Stahl EA, Breen G, Forstner AJ, et al. Genome-wide association study identifies 30 loci associated with bipolar disorder. *Nat Genet*. 2019;51(5):793–803.
27. Munz M, Wohlers I, Simon E, et al. QTLizer: comprehensive QTL annotation of GWAS results. *Sci Rep*. 2020;10(1):20417.
28. Wu G, Dawson E, Duong A, Haw R, Stein L. ReactomeFIViz: a Cytoscape app for pathway and network-based data analysis. *F1000Res*. 2014;3:146.
29. Shannon P, Markiel A, Ozier O, et al. Cytoscape: a software environment for integrated models of biomolecular interaction networks. *Genome Res*. 2003;13(11):2498–2504.
30. Watanabe K, Taskesen E, van Bochoven A, Posthuma D. Functional mapping and annotation of genetic associations with FUMA. *Nat Commun*. 2017;8(1):1826.
31. Kaidanovich-Beilin O, Woodgett JR. GSK-3: Functional Insights from Cell Biology and Animal Models. *Front Mol Neurosci*. 2011;4:40.
32. Freland L, Beaulieu JM. Inhibition of GSK3 by lithium, from single molecules to signaling networks. *Front Mol Neurosci*. 2012;5:14.
33. Shine B, McKnight RF, Leaver L, Geddes JR. Long-term effects of lithium on renal, thyroid, and parathyroid function: a retrospective analysis of laboratory data. *Lancet*. 2015;386(9992):461–468.

34. Lieber I, Ott M, Öhlund L, et al. Lithium-associated hypothyroidism and potential for reversibility after lithium discontinuation: Findings from the LiSIE retrospective cohort study. *Journal of Psychopharmacology*. 2020;34(3):293–303.
35. Ching MS, Shen Y, Tan WH, et al. Deletions of NRXN1 (neurexin-1) predispose to a wide spectrum of developmental disorders. *Am J Med Genet B Neuropsychiatr Genet*. 2010;153B(4):937–947.
36. Patial S, Shahi S, Saini Y, et al. G-protein coupled receptor kinase 5 mediates lipopolysaccharide-induced NFκB activation in primary macrophages and modulates inflammation in vivo in mice. *J Cell Physiol*. 2011;226(5):1323–1333.
37. de Lucia C, Grisanti LA, Borghetti G, et al. G protein-coupled receptor kinase 5 (GRK5) contributes to impaired cardiac function and immune cell recruitment in post-ischemic heart failure. *Cardiovasc Res*. 2022;118(1):169–183.
38. Gurevich EV, Gurevich VV. GRKs as Modulators of Neurotransmitter Receptors. *Cells*. 2020;10(1):52.
39. Suzuki J, Imanishi E, Nagata S. Exposure of phosphatidylserine by Xk-related protein family members during apoptosis. *J Biol Chem*. 2014;289(44):30257–30267.
40. Wray NR, Ripke S, Mattheisen M, et al. Genome-wide association analyses identify 44 risk variants and refine the genetic architecture of major depression. *Nat Genet*. 2018;50(5):668–681.
41. Schizophrenia Working Group of the Psychiatric Genomics Consortium. Biological insights from 108 schizophrenia-associated genetic loci. *Nature*. 2014;511(7510):421–427.
42. Çakır U, Tuman TC, Yıldırım O. Increased neutrophil/lymphocyte ratio in patients with bipolar disorder: a preliminary study. *Psychiatr Danub*. 2015;27(2):180–184.
43. Singh D, Guest PC, Dobrowolny H, et al. Changes in leukocytes and CRP in different stages of major depression. *J Neuroinflammation*. 2022;19(1):74.
44. Hwang JP, Tsai SJ, Hong CJ, Yang CH, Hsu CD, Liou YJ. Interleukin-1 beta – 511C/T genetic polymorphism is associated with age of onset of geriatric depression. *Neuromolecular Med*. 2009;11(4):322–327.

Figures

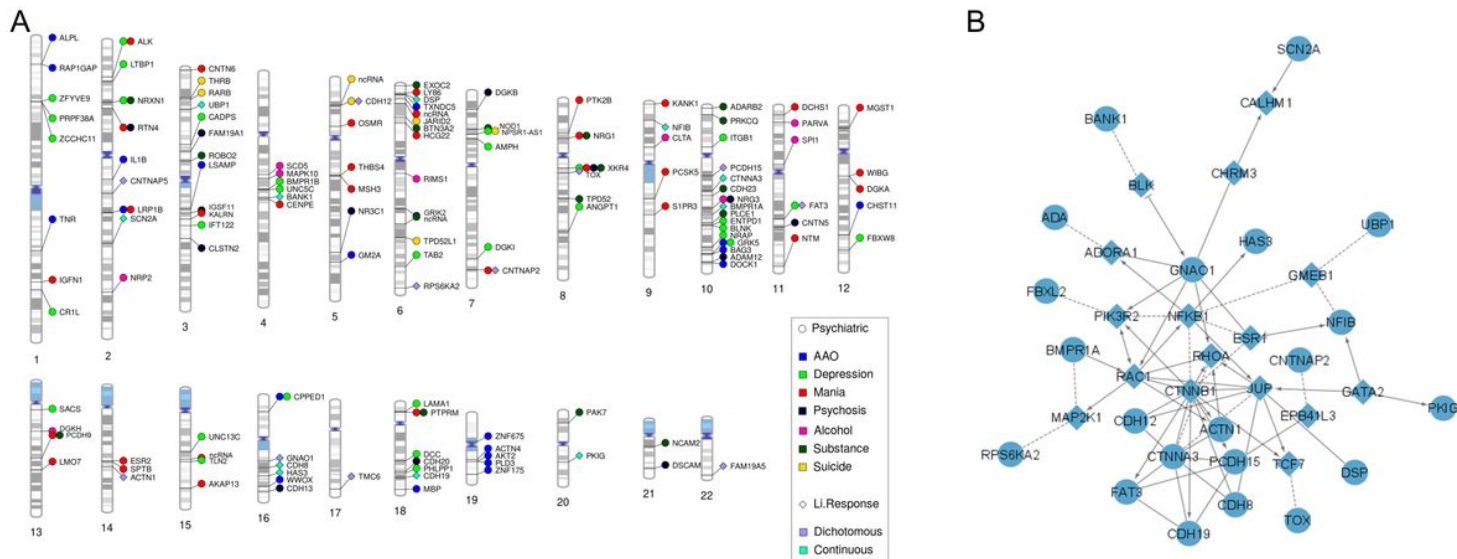


Figure 1

Exploratory findings for the ImmuneSet in ConLi⁺Gen. **A)** Gene-based phenogram of associations of the ImmuneSet with Li response and clinical features in ConLi⁺Gen. **B)** Protein-protein interaction network of Li response phenotype associations in the ImmuneSet. Circles represent input genes and diamonds represent linker genes. Dotted lines denote predicted interactions.

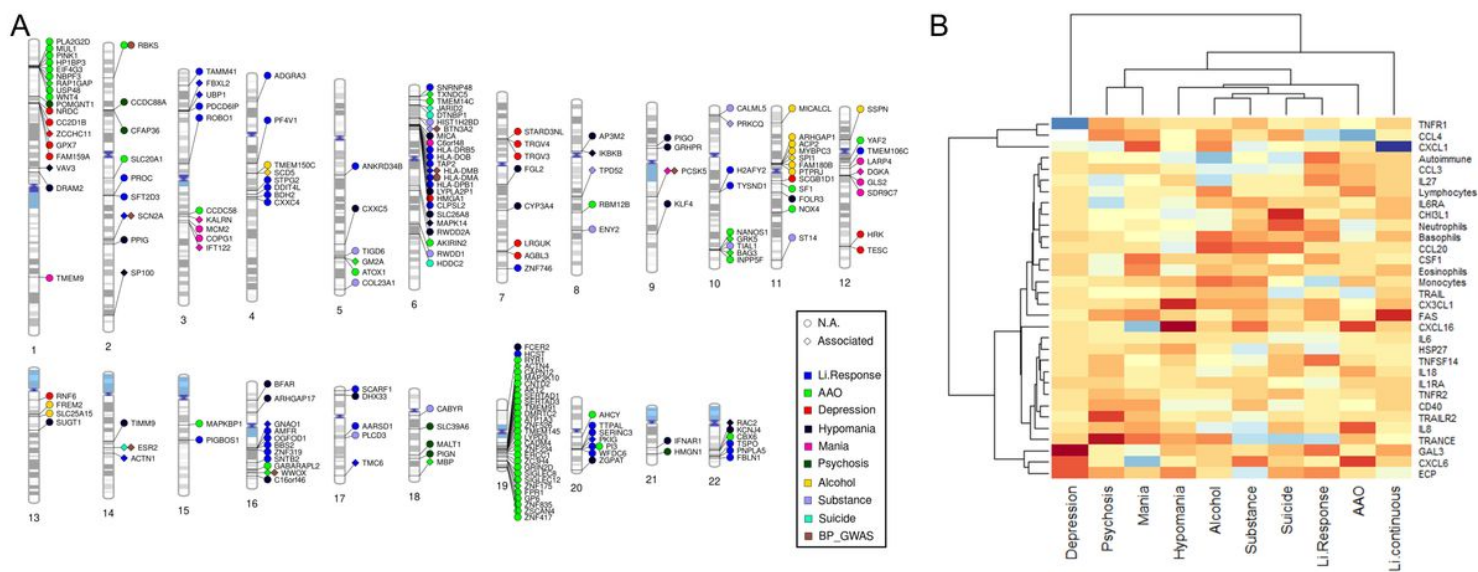


Figure 2

A) Gene-based phenogram of eQTL annotations for the exploratory-level findings of the ImmuneSet in ConLi⁺Gen. Those eQTL genes that were different from the mapped gene and those that were the same are presented in circle and diamond shapes, respectively. Only protein-coding genes are shown. In addition, overlaps with BP genetic associations reported in the GWAS Catalog are presented. **B)** Exploratory findings for the immune-related polygenic scores calculated in ConLi⁺Gen. Significance of

calculated PGSs for BP phenotypes in ConLi⁺Gen “GWAS1”. The heatmap shows the z-values obtained for each PGS-phenotype pair. Increasing color darkness alludes to increasing effect, with red and blue colors at the negativ and positive extremes, respectively.

Supplementary Files

This is a list of supplementary files associated with this preprint. Click to download.

- [SupplementaryFigures.pdf](#)
- [SupplementaryFile1.xlsx](#)
- [SupplementaryFile2.xlsx](#)