



HAL
open science

The roles of different forms of IL-15 in human melanoma progression

Sabina Di Matteo, Enrico Munari, Piera Filomena Fiore, Silvia Santopolo, Camilla Sampaoli, Andrea Pelosi, Salem Chouaib, Nicola Tumino, Paola Vacca, Francesca Romana Mariotti, et al.

► To cite this version:

Sabina Di Matteo, Enrico Munari, Piera Filomena Fiore, Silvia Santopolo, Camilla Sampaoli, et al.. The roles of different forms of IL-15 in human melanoma progression. *Frontiers in Immunology*, 2023, 14, pp.1183668. 10.3389/fimmu.2023.1183668 . inserm-04119880

HAL Id: inserm-04119880

<https://inserm.hal.science/inserm-04119880v1>

Submitted on 6 Jun 2023

HAL is a multi-disciplinary open access archive for the deposit and dissemination of scientific research documents, whether they are published or not. The documents may come from teaching and research institutions in France or abroad, or from public or private research centers.

L'archive ouverte pluridisciplinaire **HAL**, est destinée au dépôt et à la diffusion de documents scientifiques de niveau recherche, publiés ou non, émanant des établissements d'enseignement et de recherche français ou étrangers, des laboratoires publics ou privés.



Distributed under a Creative Commons Attribution 4.0 International License



OPEN ACCESS

EDITED BY

Cinzia Fionda,
Sapienza University of Rome, Italy

REVIEWED BY

Tiziana Musso,
University of Turin, Italy
Walter J. Storkus,
University of Pittsburgh, United States

*CORRESPONDENCE

Bruno Azzarone
✉ bazzarone@hotmail.com

[†]These authors have contributed equally to this work

^{††}These authors share senior authorship

RECEIVED 10 March 2023

ACCEPTED 05 May 2023

PUBLISHED 02 June 2023

CITATION

Di Matteo S, Munari E, Fiore PF, Santopolo S, Sampaoli C, Pelosi A, Chouaib S, Tumino N, Vacca P, Mariotti FR, Ebert S, Machwirth M, Haas D, Pezzullo M, Pietra G, Grottoli M, Buart S, Mortier E, Maggi E, Moretta E, Caruana I and Azzarone B (2023) The roles of different forms of IL-15 in human melanoma progression. *Front. Immunol.* 14:1183668. doi: 10.3389/fimmu.2023.1183668

COPYRIGHT

© 2023 Di Matteo, Munari, Fiore, Santopolo, Sampaoli, Pelosi, Chouaib, Tumino, Vacca, Mariotti, Ebert, Machwirth, Haas, Pezzullo, Pietra, Grottoli, Buart, Mortier, Maggi, Moretta, Caruana and Azzarone. This is an open-access article distributed under the terms of the [Creative Commons Attribution License \(CC BY\)](https://creativecommons.org/licenses/by/4.0/). The use, distribution or reproduction in other forums is permitted, provided the original author(s) and the copyright owner(s) are credited and that the original publication in this journal is cited, in accordance with accepted academic practice. No use, distribution or reproduction is permitted which does not comply with these terms.

The roles of different forms of IL-15 in human melanoma progression

Sabina Di Matteo^{1†}, Enrico Munari^{2†}, Piera Filomena Fiore¹, Silvia Santopolo¹, Camilla Sampaoli¹, Andrea Pelosi¹, Salem Chouaib^{3,4}, Nicola Tumino⁵, Paola Vacca⁵, Francesca Romana Mariotti¹, Stefan Ebert⁶, Markus Machwirth⁶, Dorothee Haas⁶, Marco Pezzullo⁷, Gabriella Pietra^{8,9}, Melania Grottoli⁹, Stephanie Buart³, Erwan Mortier^{10,11}, Enrico Maggi¹, Lorenzo Moretta¹, Ignazio Caruana^{6†} and Bruno Azzarone^{1*††}

¹Tumor Immunology Unit, Bambino Gesù Children's Hospital, Istituto di Ricerca e Cura a Carattere Scientifico (IRCCS), Rome, Italy, ²Pathology Unit, Department of Molecular and Translational Medicine, University of Brescia, Brescia, Italy, ³Institut national de la santé et de la recherche médicale Unité Mixte Recherche (INSERM UMR) 1186, Integrative Tumor Immunology and Cancer Immunotherapy, Gustave Roussy, École Pratique des Hautes Études (EPHE), Faculty De Médecine Univ. Paris-Sud, University Paris-Saclay, Villejuif, France, ⁴Thumbay Research Institute for Precision Medicine, Gulf Medical University, Ajman, United Arab Emirates, ⁵Immunology Research Area, Innate Lymphoid Cells Unit, Bambino Gesù Children's Hospital, IRCCS, Rome, Italy, ⁶Department of Pediatric Hematology, Oncology and Stem Cell Transplantation, University Hospital of Würzburg, Würzburg, Germany, ⁷Core Facility, IRCCS Bambino Gesù Children's Hospital, Rome, Italy, ⁸Department of Experimental Medicine (DiMES), University of Genoa, Genoa, Italy, ⁹Immunology Unit, IRCCS Ospedale Policlinico San Martino, Genoa, Italy, ¹⁰Nantes Université, Centre national de la recherche scientifique (CNRS), Inserm, CRCI2NA, Nantes, France, ¹¹LabEx IGO, Immunotherapy, Graft, Oncology, Nantes, France

Background: Melanoma is a lethal skin cancer, and the risk of developing it is increased by exposure to ultraviolet (UV) radiation. The production of cytokines such as interleukin-15 (IL-15), induced by the exposure of skin cells to UV rays, could also promote melanoma development. The aim of this study is to investigate the possible role of Interleukin-15/Interleukin-15 Receptor α (IL-15/IL-15R α) complexes in melanoma development.

Methods: The expression of IL-15/IL-15R α complexes by melanoma cells was evaluated both *ex vivo* and *in vitro* by tissue microarray, PCR, and flow cytometry. The presence of the soluble complex (sIL-15/IL-15R α) in the plasma of metastatic melanoma patients was detected using an ELISA assay. Subsequently, we investigated the impact of natural killer (NK) cell activation after rIL-2 starvation followed by exposure to the sIL-15/IL-15R α complex. Finally, by analyzing public datasets, we studied the correlation between IL-15 and IL-15R α expressions and melanoma stage, NK and T-cell markers, and overall survival (OS).

Results: Analysis of a melanoma tissue microarray shows a significant increase in the number of IL-15⁺ tumor cells from the benign nevi to metastatic melanoma stages. Metastatic melanoma cell lines express a phorbol-12-myristate-13-acetate (PMA)-cleavable membrane-bound IL-15 (mbIL-15), whereas cultures from primary melanomas express a PMA-resistant isoform. Further analysis revealed that 26% of metastatic patients present with consistently high plasmatic levels of

sIL-15/IL-15R α . When the recombinant soluble human IL-15/IL-15R α complex is added to briefly starved rIL-2-expanded NK cells, these cells exhibit strongly reduced proliferation and levels of cytotoxic activity against K-562 and NALM-18 target cells. The analysis of public gene expression datasets revealed that high IL-15 and IL-15R α intra-tumoral production correlates with the high levels of expression of CD5 $^{+}$ and NKp46 $^{+}$ (T and NK markers) and significantly correlates with a better OS in stages II and III, but not in stage IV.

Conclusions: Membrane-bound and secreted IL-15/IL-15R α complexes are continuously present during progression in melanoma. It is notable that, although IL-15/IL-15R α initially promoted the production of cytotoxic T and NK cells, at stage IV promotion of the development of anergic and dysfunctional cytotoxic NK cells was observed. In a subgroup of melanoma metastatic patients, the continuous secretion of high amounts of the soluble complex could represent a novel NK cell immune escape mechanism.

KEYWORDS

cytokines, melanoma, IL-15, IL-15 complex, natural killer cells, immunology

Introduction

Cutaneous melanoma is the most lethal form of skin cancer both in adult and pediatric patients and is able to metastasize during the early stages of tumor development. Its prevalence increases at a rate of about 3% annually (1), representing a significant public health problem. An estimated 160,000 new cases per year are diagnosed worldwide. The incidence of melanoma increases as a function of age, rising from 1.1 per million in 1- to 4-year-olds to 10.4 per million in 15- to 19-year-olds. In addition, starting from the 1970s, an increase in the number of pediatric melanomas was observed, with a mean percent per year ranging between 2% and 2.9% (1–3). Different parameters contribute to determining the staging of melanoma such as tumor thickness, ulceration, mitotic rate, and metastases formation into local lymph nodes and distal sites. Most early-stage melanomas (i.e., those at stage I or II) are classified as non-metastatic, even though ~5% of affected patients will experience recurrence. In contrast, stage III melanomas are characterized by local metastases, and in stage IV the presence of distant metastasis is typical (1–3). It has been shown that exposure to ultraviolet (UV) radiation increases the risk of developing melanoma (3). In recent years, several studies have demonstrated how UV exposure can induce inflammation and the production of different cytokines (4, 5). In this study, we hypothesize that cytokines could be somehow involved in melanoma development. In this context, Mohamadzadeh et al. found that UV-B rays upregulate the expression of interleukin-15 (IL-15) in human skin cells (6). Therefore, we focused on this cytokine.

IL-15 is a pleiotropic cytokine, linking *in vivo* innate and adaptive immune responses (7). It is included into the four α -helix bundle cytokine family and is produced constitutively by both normal and neoplastic cells (8). IL-15 stimulates immune cell responses through an intermediate-affinity heterodimeric receptor

(7) shared with IL-2 (IL-2R β / γ ϵ). This may or may not be associated with the high-affinity private IL-15R α chain, which confers specificity and facilitates signal transduction (9, 10). Moreover, specific IL-15R α isoforms associating intracellularly with IL-15 (11) are subsequently expressed at the cell surface as a membrane-bound IL-15 complex (mbIL-15). This complex may signal in *cis* (12), but essentially transmits the signal in *trans* to neighboring cells equipped with the intermediate affinity receptor (11, 13, 14). The existence of a transmembrane-bound form of IL-15 (not bound to IL-15R α) that is resistant to acidic shock has also been reported; this form not only is able to signal in *trans* but can also activate a reverse signal upon stimulation with soluble IL-15 receptor-alpha or anti-IL-15 antibodies (15). Both mb-IL15 and transmembrane mb-IL-15 behave as hyperagonist isoforms. In addition, we reported that the IL-15/IL-15R α heterodimer is also detectable as a soluble complex (sIL-15/IL-15R α complex) that interacts with cells expressing the intermediate affinity IL-15R. This complex behaves as a hyperagonist isoform, displaying greater half-life, bioavailability, and biological efficacy than monomeric IL-15 (13, 16). In this context, Muller et al. have identified the IL-15R α isoforms (WT IL-15R α and IC3 IL-15R α) that are specifically involved in the assembly of different IL-15/IL-15R α complexes (11).

The administration of exogenous IL-15 is of major therapeutic interest in immuno-oncology (7, 17), promoting the expansion of both natural killer (NK) and T cells (17, 18). In NK and T cells, IL-15, more than other cytokines, leads to enhanced anti-tumor immunity (18, 19). Indeed, recombinant human IL-15 and sIL-15/IL-15R α , employed alone or in association with other therapies, cause efficient tumor regression in several experimental tumor models (18, 19).

Although IL-15 is a promising therapeutic tool, several human solid tumor-derived cell lines and tissues, such as from the colon, head and neck, kidney, lung, triple-negative breast cancers, and melanoma, including uveal melanomas, express intra-tumoral IL-

IL-15 and/or IL-15R α , have been shown to act as tumor promoters and, in a few instances, as protecting factors (8). Concerning human melanomas, it is known that long-term survival correlates with low levels of monomeric IL-15 in the serum, whereas a poor survival outcome correlates with high levels of monomeric IL-15, possibly reflecting the increased expressions of T cell immunoglobulin and mucin-domain containing-3 (TIM-3) and programmed cell death protein 1 (PD-1) in both NK and T cells (20). Barzegar et al. showed that IL-15 produced by primary cutaneous melanoma cells, acting through “juxtacrine mechanisms”, triggers the activation of the pro-inflammatory and immune-regulatory NF- κ B pathway and the modulation of class I major histocompatibility complex (MHC) molecule expression, which favors immune-escape mechanisms from cytolytic T cells (21). In addition, a study on human uveal melanoma shows that IL-15 administration induces the proliferation of all tested cell lines and decreases their susceptibility to NK cell-mediated cytotoxicity and the response to cisplatin treatment (22). Moreover, Bergamaschi et al. detected high levels of sIL-15/IL-15R α in the sera of eight lympho-depleted metastatic melanoma patients (23). In addition, several preclinical studies have reported that prolonged *in vivo* stimulation with sIL-15/IL-15R α complexes leads to the accumulation of exhausted NK cells (24–27). However, the impact of sIL-15/IL-15R α complexes on melanoma progression, and their roles in the development of an immunosuppressive tumor microenvironment (TME) and the establishment of NK and T-cell exhaustion, have yet to be clarified.

In this context, our study aims to investigate if (i) IL-15 expression correlates with tumor stage development (by analyzing melanoma tissue microarrays), (ii) melanoma cells are competent for the assembly and production of IL-15/IL-15R α complexes, (iii) the presence of elevated plasmatic levels of the sIL-15/IL-15R α complex in metastatic melanoma patients depends on lympho-depletion, (iv) prolonged *in vitro* exposure of NK cells to the sIL-15/IL-15R α causes direct dysfunctions in these cells and (v) IL-15/IL-15R α expression correlates with tumor progression, as revealed by the analysis of public datasets in melanoma patients.

Material and methods

Cell lines and treatments

The metastatic human melanoma cell lines MeWo, C32, A2058, SK-Mel-28, SH-4, A375, Hs 852.T, the human erythroleukemia cell line K562, the B cell leukemia NALM-18, and the primary/metastatic pair WM-115/WM-266–4 (derived from the same patient) were purchased from the American Type Culture Collection (ATCC, Virginia, USA). The primary T1 and the metastatic melanoma G1 cell lines, derived from the same patient, were obtained from the Institute Gustave Roussy (Villejuif, France). The abovementioned cell lines were expanded in RPMI-1640 medium (Euroclone, Italy) supplemented with 2 mM L-glutamine (Euroclone), 1% streptomycin and penicillin (Euroclone), and 10% fetal bovine serum (FBS; Thermo-Fisher Scientific, Massachusetts, USA). In some experiments, melanoma cell lines were treated for 36 h with 1 ng/mL of interferon alpha (IFN- α) (Merck, Canada) and 1 ng/ml of

anti-CD40 monoclonal antibodies (mAb) (clone 5C3 - Functional Grade, Thermo-Fisher Scientific). In other experiments, WM-115, WM-266–4, T1, G1, A2058, and SK-MEL-28 melanoma cells were treated with 100 ng/mL of phorbol-12-myristate-13-acetate (PMA, Sigma-Aldrich) for 3 h as previously described (28). All cell lines were confirmed as mycoplasma-negative by reverse transcription PCR (RT-PCR) (Eurofins, Luxembourg).

Purification of NK cells and cytokine treatments

Freshly isolated NK cells were purified from the fractions of peripheral blood mononuclear cells (PBMC) derived from healthy donors' buffy coats using the RosetteSep Human NK cell Enrichment Cocktail (Stemcell Technologies, Canada) in accordance with the manufacturer's instructions. NK cells were cultured as previously described (29).

Freshly isolated NK cells were treated for 5 days with IL-15clpx (16) or monomeric recombinant human IL-15 (rIL-15) at different concentrations. IL-15clpx is a fusion protein consisting of human IL-15 and human IL-15R α -sushi linked by a flexible peptide, this complex behaves as a potent superagonist of IL-15R β / γ . Indeed, IL-15clpx induces the proliferation of the MO7 IL-15R β ⁺/ γ ⁺ cell line, with EC50s ~ 25 pM far lower than that of rIL-15 alone 3 nM (16).

Alternatively, freshly isolated NK cells were expanded over 12 days in RPMI-1640 medium (Euroclone) supplemented either with 10% FBS and 600 U/mL recombinant human IL-2 (rIL-2 Proleukin; NovartisFarma, Italy) or with rIL-15 at 20 ng/mL (Miltenyi Biotec, Italy). Thereafter, a fraction of NK cells were starved for 36 h and then re-fed for an additional 5 days with rIL-2 at 600 U/mL (starved-Ctrl) or rIL-15 at 20 ng/mL or IL-15clpx at 1 ng/mL or 0.5 ng/mL (29). After starvation, NK cells were also re-fed, in the abovementioned conditions, with medium changes every 3 days. Finally, activated NK cells were used as effector cells against CellTracker Green labeled K562 cells employed as targets at different effector : target (E:T) ratios.

Cytotoxicity assays

NK cytotoxicity activity was evaluated using K562 and NALM-18 cells as targets. Tumor cells were stained with 5 μ M Cell Tracker Green (CMFDA; Thermo-Fisher Scientific) and incubated with NK cells at 37°C at different E:T ratios. Four hours later, tumor cell suspensions were exposed to propidium iodide (PI, Sigma-Aldrich) at a 1:200 ratio, and cell viability was determined using flow cytometry (Cytoflex S Beckman-Coulter). Dead target cells were recognized as CMFDA⁺ PI⁺ and the percentage (%) of cell lysis was calculated as reported before (30).

Immunohistochemistry studies

A melanoma tissue microarray with duplicate cores per case (ME1004h, D.B.A. Italia s.r.l.), including both pediatric and adult

samples, was deparaffinized and unmasking of the antigenic epitopes was performed using PT link (DAKO, Italy). Incubation with 3% H₂O₂ solution in methanol was employed to block endogenous peroxidase activity, and treatment with 5% bovine serum albumin (BSA) and 1% goat serum in phosphate buffer saline (PBS) blocked non-specific sites. Slides were incubated overnight at room temperature with anti-IL-15 monoclonal antibodies (mAb) (Abcam) in a humidified chamber. A Dako EnVision FLEX Mini Kit (Dako) was employed for detection, followed by counterstaining with Gill's hematoxylin. Subsequently, the slides were scanned with a NanoZoomer S60-Digital slide scanner (Hamamatsu-Photonics, Hamamatsu, Japan). Finally, the images were processed using NDP.view2 software (Hamamatsu-Photonics). Slides were evaluated independently by pathologists in a blinded fashion.

ELISA assay

Plasma from non-lympho-depleted metastatic melanoma patients was collected at different time intervals, ranging between 2 and 6 months (T1 and T2), divided into 500- μ L aliquots, and rapidly frozen at -80°C .

Subsequently, aliquots of each sample were thawed, and quantification of sIL-15/IL-15R α complex was performed by ELISA assay human IL-15/IL-15R α complex DuoSet ELISA (R&D Systems) in accordance with the manufacturer's instructions. ELISA assays performed at different time intervals on plasma aliquots derived from the same patients yielded homologous results, confirming the stability of the sIL-15/IL-15R α complexes over time under cryostorage conditions, as previously stated (23).

Polymerase chain reaction

Total RNA was prepared using an RNeasy mini kit in accordance with the manufacturer's instructions (Qiagen) from primary and metastatic human melanoma cell lines stimulated or not with an interferon- α /anti-CD40 monoclonal antibodies (mAb) combined treatment (IFN- α /anti-CD40) or PMA. Subsequently, transcription into cDNA of 1 μ g of RNA was performed using an oligo-dT primer with high-capacity cDNA reverse transcription kit (Thermo Fisher Scientific).

All PCR amplifications were performed with the following parameters: 3 min at 94°C , followed by 35 cycles of 95°C for 15 s, 60°C for 15 s, and 72°C for 90 s, with a final extension at 72°C for 5 min. The amplification of the entire coding region of human IL-15R α required a nested step, in which 1 μ L of the first PCR was used as a template for the nested step. 18S rRNA was used as an internal control. The primers used for PCR are IL-15R α first round FW: 5'-GTGTCCTGTGGAGCTGCCGCCATG-3', RV: 5'-CCCCTT CCTTGACCTCTTCTCAGTCGTC-3'; IL-15R α second round FW: 5'-GGCGCTGCTACTGCTGCTGCTGCTCC-3', RV: 5'-GGGAGATGAAGCTGCGGGCTCTTTTC-3'. IC3 FW: RV: 5'-CGTGCCGGCTTTACGCTTGA-3'; 18S FW: 5'-GGAGAGG GAGCCTGAGAAA -3', RV: 5'-CGAAAGAGTCCTGTATTGT TATTT -3'; ADAM 17 FW 5'-ACTGCACGTTGAAGGAAGGT-

3', RV 5'-ACGCCTTTGCAAGTAGCATT - 3', GAPDH FW 5'-TC TTTTGCCTGCGCCAGCCGA-3', RV 5'-ACCAGGCGCCCAATA CGACC -3'.

Flow cytometry

For the detection of mbIL-15, melanoma cells were stained with the anti-human IL-15 monoclonal AF700-conjugated antibody monoclonal antibodies (mAb) (IC2471N; R&D System, Minnesota USA) for 20 min at 4°C . Cells were analyzed using the Beckman-Coulter Cytoflex-S flow cytometer (Beckman-Coulter, California, USA). At least 10,000 events for each condition were analyzed. The acquired data were analyzed using CytExpert-2.3 (Beckman-Coulter) and FlowJo v.10 software (BD-Biosciences, New Jersey, USA).

Statistical analysis

Data were expressed as mean \pm standard deviation (SD). A paired Student's two-tailed *t*-test or two-way analysis of variance (ANOVA) associated with a Bonferroni correction in case of multiple comparisons was employed for the calculation of the statistical significance, as indicated. *P*-values < 0.05 were considered statistically significant.

Graphs were generated using GraphPad Prism 6 software (GraphPad Software, Boston, MA, USA). Overall survival (OS) probabilities were estimated using Kaplan-Meier survival curves with a log-rank test associated with Bonferroni correction. We were able to measure differences between stages using tools present in R2 and Biomedical Informatics Institute datasets (<http://r2.amc.nl>, <https://bioinfo.henu.edu.cn>). The last quartile of the distribution was used as the cut-off to split the samples into high and low antigen expression groups.

Results

IL-15 is expressed *ex vivo* in human melanoma cells

As a first step, we investigated the expression of IL-15 in samples of normal skin, nevi, and melanomas at different stages using a tissue microarray. In normal skin, IL-15 was mainly detected in the epidermis (Figure 1A) in the basal cell layer (Figure 1A yellow arrow). In contrast, in benign nevi (Figure 1B), well-delimited nests of melanocytes positive for IL-15 were detected in the dermis, whereas only a faint signal was detected in the epidermis. In stage I, II, and III melanoma samples (Figure 1C), a higher level of expression and distribution of IL-15⁺ tumor cells were detected in the dermis and epidermis ($p < 0.05$) than in the nevi, whereas in metastatic samples virtually all tumor cells were strongly positive ($p < 0.05$ vs. nevi). Furthermore, statistical analysis revealed a significant difference ($p < 0.05$) in the expression intensity of IL-15 in melanoma samples compared with nevi (Figures 1D, E). We also found an increase in the expression of

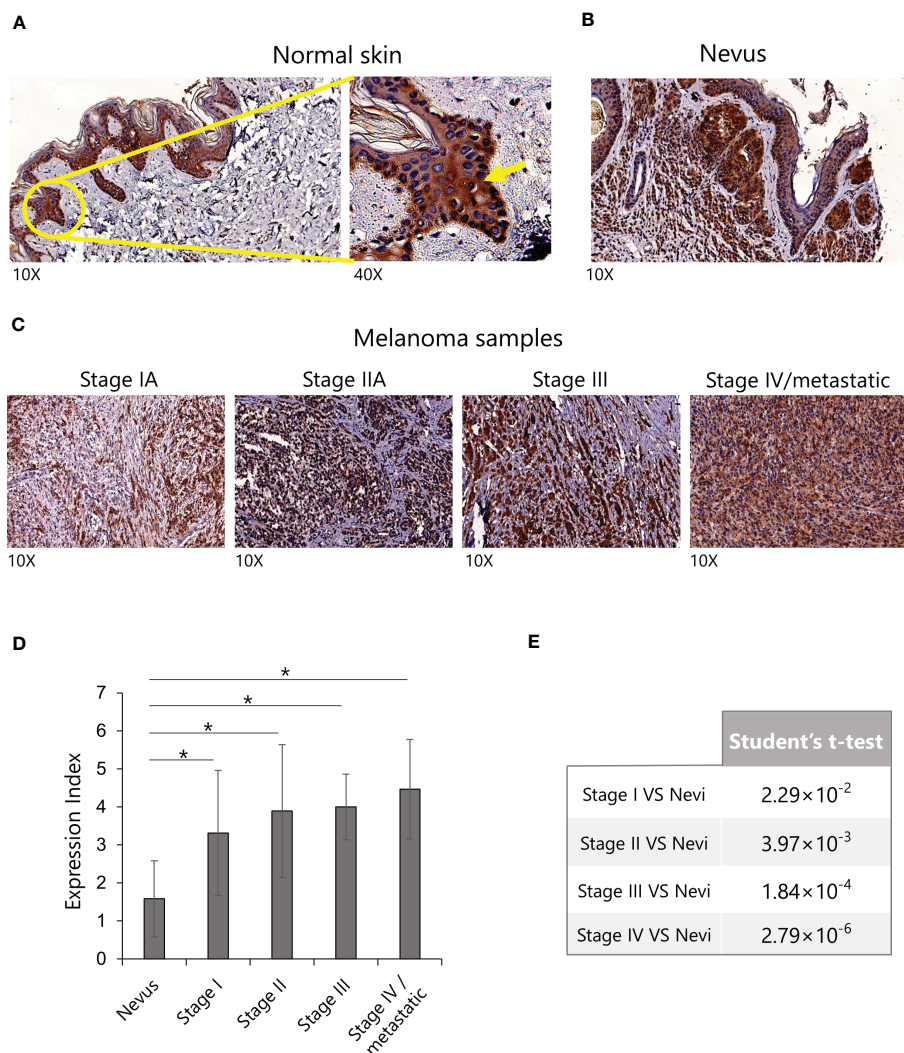


FIGURE 1

Expression of IL-15 in human melanoma tissue microarrays by immunohistochemistry. (A) Representative images of sections of normal skin, (B) nevi, and (C) melanomas (from stage I to stage IV) stained with anti-human IL-15 monoclonal antibodies (mAb). (D) Expression index of IL-15 staining in the indicated IHC. p-values were calculated using a Student's t-test (* $p < 0.05$). (E) Results of Student's t-test relative to graph in (D). IHC, immunohistochemistry; IL-15, interleukin-15.

IL-15-positive melanocytes among stages, but this increase was not statistically significant.

Definition of IL-15R α transcript isoforms involved in the assembly of IL-15/IL-15R α complexes in primary and metastatic melanoma cell lines

Subsequently, several melanoma cell lines were analyzed by PCR for the expression of IL-15R α transcripts, previously reported by Muller et al. (11), to be involved in the assembly of the mbIL-15 isoform, WT IL-15R α , and the IL-15/IL-15R α soluble complex (IC3 IL-15R α). First, we analyzed two pairs of primary/metastatic melanoma cell lines (WM-115/WM-266-4 and T1/G1), each derived from the same patient, and seven other metastatic melanoma cell lines. The assay was performed before and after

stimulation with IFN- α and anti-CD40 monoclonal antibodies (mAb), a treatment that, *in vivo*, induces the secretion of the IL-15/IL-15R α soluble complex (31). First, we focused our attention on WT IL-15R α and IC3 IL-15R α expression on primary/metastatic pairs of tumors. PCR analysis revealed that only the primary samples (WM-115 and T1) constitutively expressed the WT IL-15R α transcript, and this expression was strongly upregulated upon IFN- α /anti-CD40 stimulation (Figure 2A). Concerning the IC3 IL-15R α transcript, we observed an increase in its expression following stimulation with IFN- α /anti-CD40 monoclonal antibodies (mAb) (Figure 2B).

Second, we analyzed the expression of the two IL-15R α isoforms on the remaining melanoma cell lines. We observed that the WT IL-15R α transcript was constitutively expressed in five/seven lines (weakly in three of them). However, this transcript was strongly upregulated after IFN- α /anti-CD40 monoclonal antibodies (mAb) stimulation in all the cell lines, except in the MeWo cell line (Figure 2C, upper panel). In addition, we found that only Hs 852.T

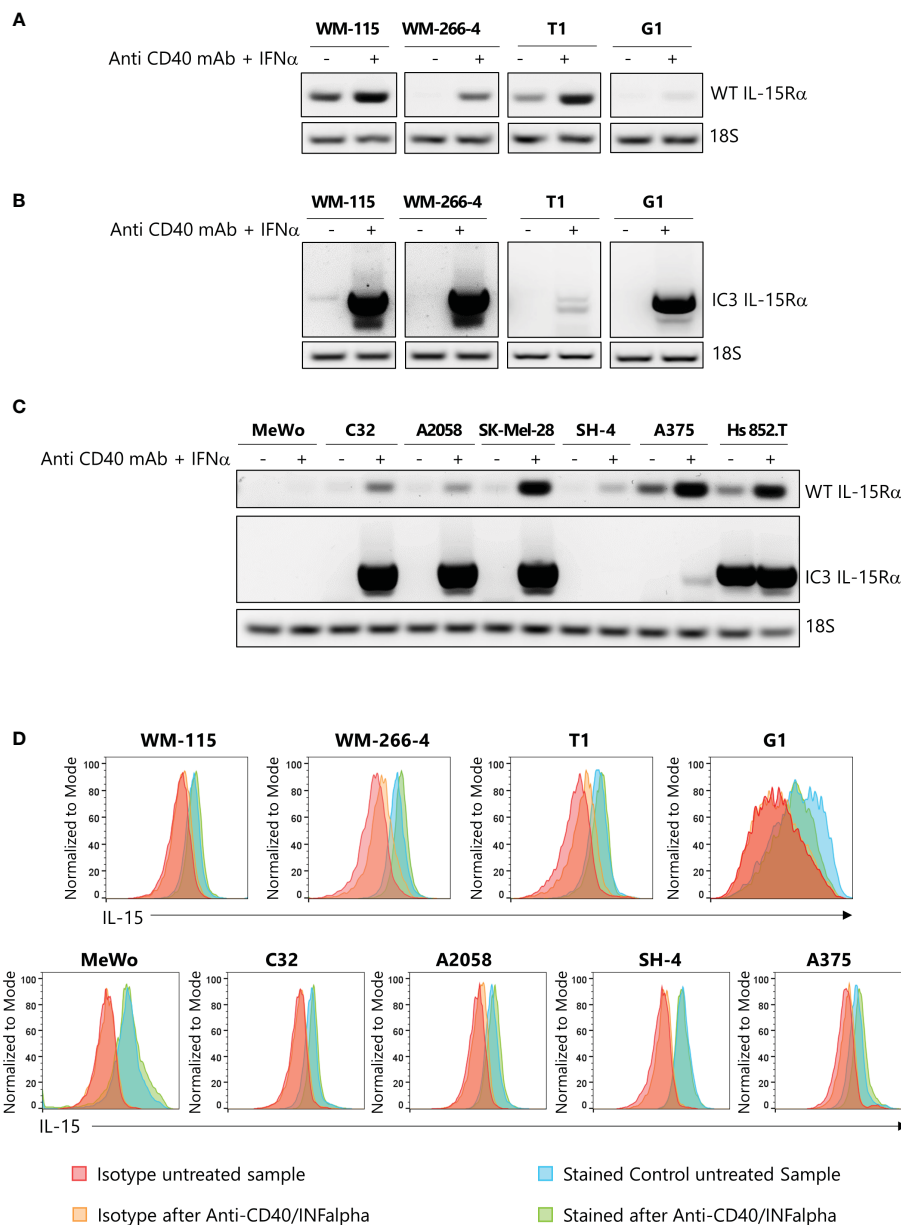


FIGURE 2
 Expression of IL-15R α isoforms and of mblIL-15 in primary and metastatic melanoma cell lines. Relative expression by PCR of Wild Type (WT) IL-15R α (A) and of IC3 IL-15R α (B) transcripts in two pairs of primary and metastatic melanoma cell cultures derived from the same patients, stimulated or not with anti-CD40/IFN- α . 18s RNA expression was used as loading control (C) Relative expression of WT IL-15R α and of IC3 IL-15R α mRNA transcripts in seven other melanoma cell lines, stimulated or not with anti-CD40/IFN- α . 18s RNA expression was used as loading control (D) Flow cytometry analysis of the surface expression of mblIL-15 in two pairs of primary and metastatic melanoma cell lines and other melanoma cell lines stimulated, or not stimulated, with anti-CD40/IFN- α . IFN- α , interferon alpha; mblIL-15, membrane-bound IL-15 complex.

cell line constitutively expressed the IC3 IL-15R α transcript. We also found that, in this case, the IFN- α /anti-CD40 monoclonal antibodies (mAb) treatment induced the expression of this isoform on five/seven tested cell lines (Figure 2C, lower panel).

Last, we used flow cytometric analysis to reveal the expression of the mblIL-15 isoform in both primary/metastatic pairs of tumors and in the seven melanoma cell lines. Figure 2D shows that, in all cases, tumor cells constitutively expressed the mblIL-15 whose expression was not modified after IFN- α /anti-CD40 monoclonal antibodies (mAb) treatment. Interestingly, the MeWo cell line

which lacked both WT IL-15R α and IC3 IL-15R α transcripts expressed mblIL-15. This isoform could likely represent the so-called trans-membrane IL-15 isoform that is not retained at the cell surface by any IL-15R α isoform (15).

To further determine which isoform was predominant, we performed an ELISA to detect the presence of soluble complex. No soluble complex was detected in any of the samples analyzed, even after lipopolysaccharides (LPS) cell treatment (data not shown) (31). This could be due to the presence, in the IC3 IL-15R α isoform, of a retention sequence of the endoplasmic reticulum

that limits its availability (11). It is possible that additional costimuli are necessary *in vitro* to trigger the secretion of the sIL-15/IL-15R α complex. These data clearly indicate that mbIL-15 is the dominant isoform in melanoma cells.

Modulation of the surface expression of the mbIL-15 by PMA

mbIL-15/IL-15R α complexes are cleaved into biologically active soluble molecules by disintegrin and metalloproteinase-17 (ADAM17) (31) that is, in turn, activated by IL-15, limiting the proliferation of NK cells (32). Using these data, we determined that the mbIL-15/IL-15R α complex expressed by melanoma cells could

be cleaved by ADAM17, and thus we treated the melanoma cells with PMA, a powerful activator of ADAM17 (33).

Flow cytometric analysis (Figure 3A) shows that, in both primary/metastatic pairs of melanoma cultures, PMA treatment (100 ng/mL for 3 h) causes a statistically significant decreased surface expression of mbIL-15/IL-15R α ($p < 0.05$) in the metastatic samples (WM-266-4, G1, A2058, and SK-MEL28) but not in the primary ones (WM-115 and T1). Interestingly, our data show that PMA treatment causes, in all the cell lines analyzed, except in G1 cells, significant increased ADAM17 RNA levels (Figure 3B). Therefore, due to the impact of ADAM17 on the cleavage of mIL-15/IL-15R α complexes, we queried the public data set TCGA for the correlation of ADAM17 expression and OS, observing no correlation even within the stages (Figure 3C).

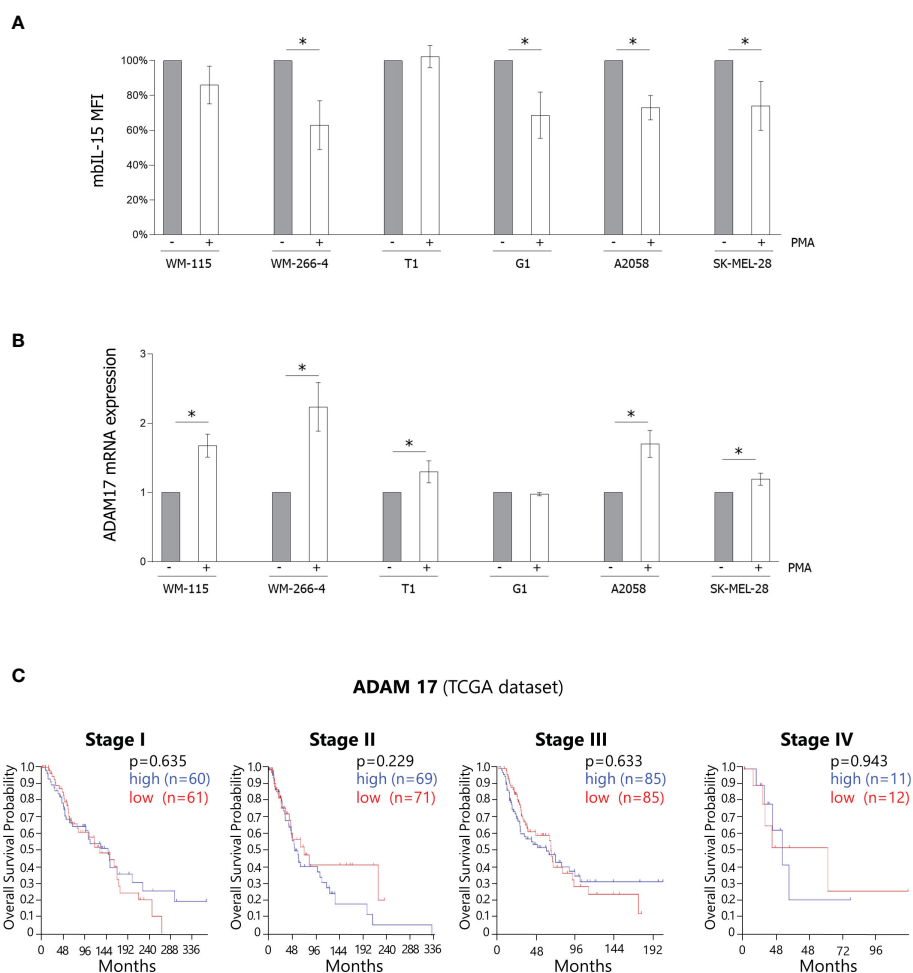


FIGURE 3

Modulation of the surface expression of the mbIL-15 by PMA. (A) Surface expression of mbIL-15 before and after treatment with PMA at 100 ng/mL for 3 h was measured by flow cytometry on primary/metastatic pairs each derived from a single patient (WM-115/WM-266-4 and T1/G1) or on metastatic cell lines (A2058 and SK-MEL-28). Bar graphs show the MFI expressed as a percentage of the untreated controls. The results are the means \pm SD ($n = 3$); p -values were calculated using a Student's t -test ($*p < 0.05$). mbIL-15, membrane-bound IL-15 complex; MFI, mean fluorescence intensity; PMA, phorbol-12-myristate-13-acetate. (B) RT-PCR analysis of ADAM17 mRNA was performed on the abovementioned samples before and after treatment with PMA. ADAM17 mRNA levels were normalized with GAPDH and were expressed as fold increases relative to the untreated controls. The results are the means \pm SD ($n = 3$); p -values were calculated using a Student's t -test ($*p < 0.05$). ADAM17, disintegrin and metalloproteinase-17; GAPDH, glyceraldehyde 3-phosphate dehydrogenase; PMA, phorbol-12-myristate-13-acetate; RT-PCR, reverse transcription PCR. (C) Analysis of the public dataset TCGA concerning the correlation between ADAM17 expression and OS in melanoma stages I–IV. ADAM17, disintegrin and metalloproteinase-17; OS, overall survival; TCGA, The Cancer Genome Atlas.

High levels of circulating sIL-15/IL-15R α complexes are present in a fraction of metastatic melanoma patients

A previous study reported that plasma samples from lympho-depleted metastatic melanoma patients were characterized by high levels of the sIL-15/IL-15R α complex (23). However, no data have been reported in non-lympho-depleted patient population. Therefore, we analyzed, at two different time points (T1 and T2), the presence of plasmatic sIL-15/IL-15R α complex in 62 non-lympho-depleted metastatic melanoma patients. A threshold of 100 pg/mL was established for defining concentrations that were biologically significant. We found that most of the samples exhibited sIL-15/IL-15R α complex levels below this threshold. However, a fraction of patients (14 out of 62) displayed high plasmatic levels of the soluble complex at T1, and 11 of these patients (78%) maintained the same levels of the soluble complex at T2 of analysis (Figure 4A).

The prolonged *in vitro* exposure to IL-15 hyperagonist inhibits NK cell cytotoxicity

Based on the abovementioned data, we hypothesized that a prolonged *in vivo* exposure of effector NK cells to sIL-15/IL-15R α may lead to the exhaustion of these cells (26, 27). To prove this hypothesis, we evaluated the functional impact of sIL-15/IL-15R α on NK cells *in vitro*. Figure 4B shows that 0.5 ng/mL IL-15clpx (17) administered at day 5 could induce cytolytic activity in freshly isolated NK cells against K562 target cells with an efficacy similar to that obtained by 20 and 10 ng/mL of IL-15 (i.e., doses routinely employed for NK cell stimulation) (27). Freshly isolated untreated NK cells were employed as controls and exhibited a significant reduction in cytolytic activity against K562 cells in comparison with the stimulated cohorts, but we did not observe any significant difference in cytolytic activity among the stimulated cohorts. Thus, we administered IL-15clpx at 1 and 0.5 ng/mL for the forthcoming experiments in which freshly isolated NK cells were first cultured for 12 days in the presence of rIL-2 at 600 UI/mL or of rIL-15 at 20 ng/mL. In Figure 4C, cluster formation indicated that NK cells had proliferated. Thereafter, part of the NK cells was starved for 36 h (i.e., with no rIL-2) and subsequently re-fed with rIL-2 or rIL-15 at 20 ng/mL, or IL-15clpx (at 0.5 or 1 ng/mL) for an additional 5 days (Figure 4C). After starvation, NK cells re-fed with rIL-2 or recombinant IL15 still displayed cluster formation (Figure 4C) and exhibited cell viability and growth rates similar to those of the control group, which was continuously supplemented with rIL-2 (Figures 4D, E). These cells also displayed high levels of cytolytic activity against K562 and NALM-18 target cells (Figure 4F). By contrast, NK cells re-fed with IL-15clpx exhibited reduced proliferative activity, as shown by the inhibition of aggregates formation (Figure 4C) and the almost total inhibition of the population doubling time (PDT), without significant loss of cell viability (Figures 4D, E). In addition, these NK cells also exhibited low levels of cytotoxic activity against K562 and

NALM-18 cells in comparison with NK cells re-fed with rIL-2 (Figure 4F) or rIL-15 (data not shown).

High IL-15 and IL-15R α expression correlates with a favorable OS in stages II and III but not in stage IV

To confirm and extend our *in vitro* results, we queried public gene-expression datasets for the impact of intra-tumoral IL-15 and IL-15R α expression on the overall patient's survival.

Thus, two public datasets, including both adult and pediatric patients, were analyzed, namely, OSskcm (1,085 patients) and TCGA (470 patients). Analysis of the correlation among different disease stages, expression of IL-15, and patient's OS was performed. In stages II and III, a higher level of expression of IL-15 was significantly correlated with a better clinical outcome (OSskcm. $p = 0.026/0.041$ and TCGA $0.003/0.001$, respectively), while this correlation was not found in stages I and IV (Figures 5A, B). In order to confirm these data, a third dataset including only metastatic patients (Bhardwaj) was used. In addition, we found a similar correlation between the level of IL-15 and OS (data not shown). The same analysis was also conducted for IL-15R α , revealing that high levels of IL-15R α correlated with a better OS in patients at stages II and III, but levels of expression not at stages I and IV in both the OSskcm and TCGA datasets (Figures 5C, D). This combined dataset analysis involving IL-15 and IL-15R α strongly suggests that, since the two molecules follow a very similar trend in the two datasets, they could act *in vivo* as hyperagonist membranes or soluble complexes.

High levels of CD5 and NKp46 expression positively correlate with the level of expression of IL-15 and IL-15R α

Based on these data, we then analyzed the correlation between of IL-15 and IL-15R α and the expression of CD5, a marker present on T cells (34), and the expression of NKp46 an activating receptor virtually specific for NK cells (35). As shown in Supplemental Figure 1A, a strong positive correlation existed between the expression of IL-15, IL-15R α , and CD5 ($p = 4.53 \cdot 10^{-35}$ and $p = 1.3 \cdot 10^{-115}$, respectively) and NKp46 ($p = 5.22 \cdot 10^{-24}$ and $p = 4.35 \cdot 10^{-35}$, respectively).

High levels of CD5 and NKp46 expression positively correlate with OS in stages II and III but not in stage IV

Within the same dataset, we analyzed the correlation between CD5 (Supplemental Figure 1B) and NKp46 (Supplemental Figure 1C) expression and OS at different stages of the disease. We observed that in stages II and III, high levels of CD5 or NKp46 expression translated to a better OS ($p = 6.2 \cdot 10^{-3}$ and $p = 0.034$ for

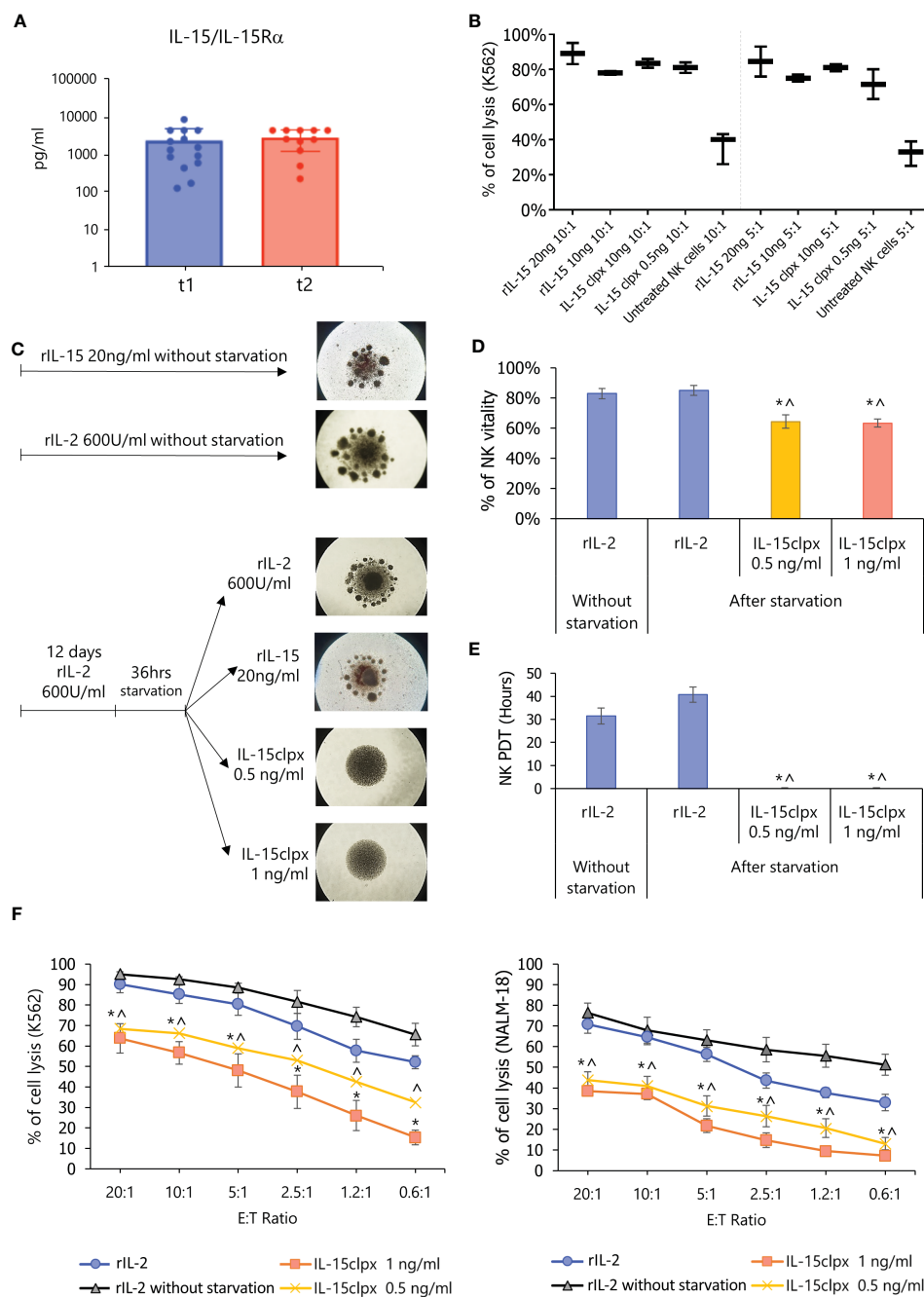


FIGURE 4

Detection of sIL-15/IL-15R α complex in plasma from metastatic melanoma patients and effect of long-lasting stimulation of NK cells with IL-15clpx. (A) Detection of the sIL-15/IL-15R α complex in the plasma of non-lympho-depleted metastatic melanoma patients. Dot-Plot analysis of the levels of sIL-15/IL-15R α complex (presented on a log scale) in the plasma from 62 metastatic melanoma patients at two different time points with intervals ranging between 2 and 6 months. (B) NK cytotoxicity assays against 5-Chloromethylfluorescein diacetate (CMFDA)-labeled K562 target cells at ratios of 10:1 and 5:1 E:T. Data were expressed as mean \pm SD ($n = 3$) of the percentage of cell lysis (PI $^+$ cells). Freshly isolated NK cells were stimulated for 5 days with different concentrations of rIL-15 (20 and 10 ng/mL) and of the IL-15clpx (10 ng/mL and 0.5 ng/mL). Non-stimulated NK cells were used as controls (untreated NK cells). The two-way ANOVA with Bonferroni's multiple comparisons test was used for the calculation of the statistical significance among the different cohorts. No significant differences were observed within various dose ratios. A significant difference ($p < 0.05$) was found only between the different dose/ratio of rIL-15 or IL-15clpx and the untreated control. ANOVA, analysis of variance; NK, natural killer; (C) Schematic schema of long-term stimulation of NK cells. On the right, representative images of the NK cells at the end of the long-term stimulation protocols have been reported. It is possible to observe the formation of clusters in the control wells treated with rIL-2 and rIL-15, which, however, are not present in the wells treated with IL-15clpx. The images are representative of $n = 5$ experiments, $\times 4$ magnification. NK, natural killer. (D) Analysis of the NK viability after long-term stimulation. Data were expressed as mean \pm SD ($n = 3$) of the percent of NK $^{PI-}$ cells. * $p < 0.05$ vs rIL-2 without starvation. $\wedge p < 0.05$ vs rIL-2. (E) Analysis of the proliferation (PDT, population doubling time) of long-term stimulated NK cells. Data were expressed in the mean of hours \pm SD ($n = 3$) of percent of cell lysis (PI $^+$ cells). * $p < 0.05$ vs rIL-2 without starvation. $\wedge p < 0.05$ vs rIL-2. NK, natural killer. (F) Analysis of the long-term IL-15clpx or rIL-2 stimulation on the cytotoxic potential of activated NK cells. Allogeneic activated NK cells were used as effector cells against Cell Tracker Green-labeled K562 and NALM-18 cells used as targets at different E:T ratios. Data were expressed as mean \pm SD ($n = 3$) of percent of cell lysis (PI $^+$ cells). * $p < 0.05$ vs rIL-2 without starvation. $\wedge p < 0.05$ vs rIL-2. E:T, effector:target; NK, natural killer.

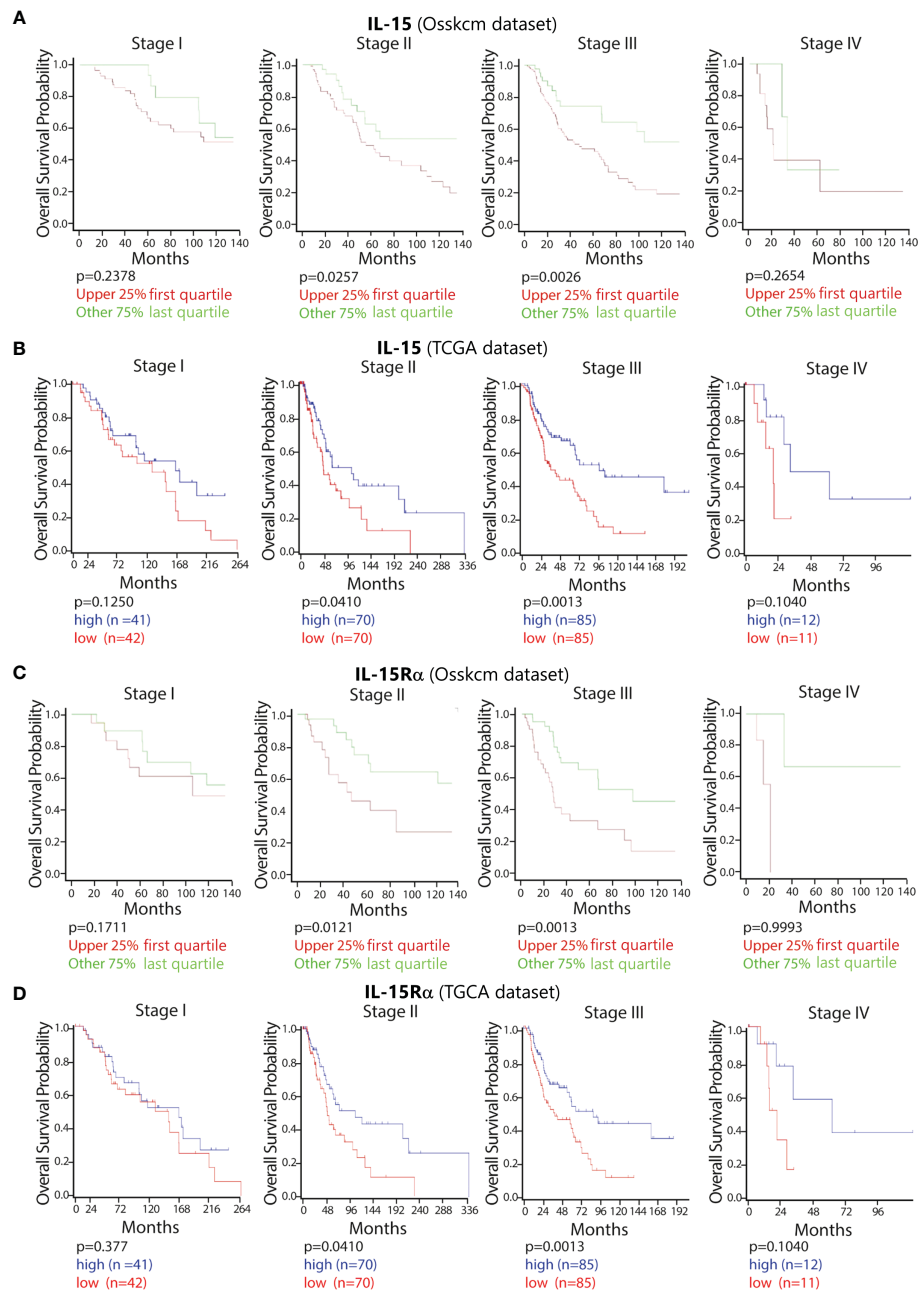


FIGURE 5

Impact of the high expression of IL-15 and IL-15R α on the OS in melanoma patients at the different stages of disease. Using the public datasets (OSskcm and TCGA) of patients with melanoma, the OS probabilities were calculated according to the level of expression of intra-tumoral IL-15 (A OSskcm and B TCGA) and IL-15R α (C OSskcm and D TCGA) from stage I to stage IV. The samples were divided into categories of high vs. low antigen expression using the last quartile of their distribution as a cut-off value. IL-15, interleukin-15; OS, overall survival; TCGA, The Cancer Genome Atlas.

CD5, and $p = 0.026$ and $p = 0.032$ for NKp46), but this was not the case in stage IV.

Discussion

Since in melanoma patients' high monomeric IL-15 serum levels have been reported to correlate with a poor clinical outcome (20), we asked what could be the consequences of a too-high and constant production of the IL-15/IL-15R α complex.

Many studies have demonstrated that this molecule exerts very powerful biological effects on NK cells. In one of these studies, NK cells, expanded with the sIL-15/IL-15R α complex *in vivo*, mediated prompt skin allograft rejection in the absence of any adaptive immune cell involvement (36). Importantly, other studies also suggested that the presence of the IL-15/IL-15R α complex within the TME may represent a double-edged sword. Indeed, in pre-clinical melanoma models, the presence in melanoma cells and/or stromal cells of the IL-15/IL-15R α complex (either in membrane-bound or soluble form) (37, 38), or treatment with IL-15clpx, may

lead to the inhibition of tumor progression and reduction of the lung and liver metastases (39). On the other hand, prolonged *in vivo* stimulation with sIL-15/IL-15R α has been shown to cause NK cell exhaustion (25, 26, 40). Since NK cells play a major role in the control of the metastatic spread (41), we hypothesized that the detection of high levels of sIL-15/IL-15R α in the plasma of both lympho-depleted and non-lympho-depleted metastatic melanoma patients (24) could contribute to the exhaustion of NK cells in these patients.

In this study, we confirmed this hypothesis by investigating if (i) normal and neoplastic melanocytes express IL-15 by the analysis of a melanoma tissue microarray, (ii) melanoma cell lines produce the IL-15/IL-15R α complexes either spontaneously or under inflammatory stimuli, (iii) the plasma from non-lympho-depleted metastatic melanoma patients is a major source of the sIL-15/IL-15R α , (iv) the exhaustion of NK cells by the IL-15cplx is an *in vivo* phenomenon linked to particular cell interactions (26) or, alternatively, could be due to direct activity on NK cells and therefore reproducible *in vitro* as proposed elsewhere (27), and (v) IL-15 and IL-15R α expression correlates with tumor progression, by analyzing a public dataset on melanoma patients.

We analyzed a tissue microarray to find possible correlations between intra-cellular expression of IL-15 and tumor stage and evolution. In the first set of experiments, we found that IL-15 is detectable in the basal layer of normal epidermis. Notably, the skin plays a fundamental immune-neuro-endocrine function through the production, by epidermic keratinocytes and melanocytes, of several immunomodulatory cytokines and chemokines (42, 43). Thus, it is conceivable that IL-15 could play a physiologic role in skin-related immune responses (6), fostering, for instance, cutaneous tissue-resident memory T cells (T_{RM}) (44, 45). Indeed, T_{RM} expression and function are strictly dependent on local IL-15 levels (41), as shown by their absence in IL-15^{-/-} mice (43). On the other hand, in benign nevi, epidermis integrity is preserved, whereas the well-delimited foci of IL-15⁺ melanocytes appear in the dermis. In pathologic conditions, in cutaneous melanomas, IL-15⁺ tumor cells displayed a broad distribution that intensifies at different stages, becoming almost total in metastatic samples.

Subsequently, we investigated several primary and metastatic cell lines for the spontaneous or induced expression of IL-15R α transcripts specifically involved in the assembly of membrane (WT IL-15R α) or soluble (IC3 IL-15R α) isoforms of the IL-15/IL-15R α complex using PCR (12). Although most of the cell lines were expressed spontaneously or after IFN- α /anti CD40 stimulation with the above mentioned IL-15R α transcripts, none of them released detectable amounts of the soluble complex. On the other hand, the mbIL-15 isoform which is likely to represent the predominant IL-15 isoform in melanomas was detected in all of them. Thus, the mbIL-15 isoform could act similarly to the soluble complex, anergizing infiltrated NK cells through long-term cell-to-cell contact mechanisms. Alternatively, an inflammatory microenvironment could favor the production of disintegrin and metalloproteinase (ADAM), which is effective in inducing the shedding of mbIL-15 (31), thus promoting its diffusion in the TME and exerting the immunoregulatory effects that we had initially attributed to juxtacrine IL-15 loops (10, 21). Concerning this point, our data show that the IL-15 that presents at the surface of melanoma cells

can be partially cleaved by treatment with PMA, a powerful activator of ADAM17 (33), in the metastatic samples, but not in the primary cells. This evidence suggests the co-existence of two isoforms of IL-15 at the surface of metastatic samples: the former is sensitive to enzymatic cleavage (mb-IL-15) and the latter is resistant to ADAM17 (the transmembrane IL-15). Since it has been recently shown that the activation of ADAM17 by IL-15 limits human NK cell proliferation (32), we propose that cleavage of the mbIL-15 by ADAM17 causes the spread of a soluble biological active complex within the melanoma TME. In addition, since PMA may induce the increased transcription of ADAM17 through NF κ B and ERK1/2 signaling (46), which can be activated by IL-15 (47), we speculate that, in metastatic melanomas, the cleaved biological active complex increasing the enzymatic activity of ADAM17, and its transcription creates a self-perpetuating deleterious loop, leading to the decreased proliferation of infiltrating NK cells (32). Since ADAM17 is constitutively expressed by the majority of the cellular components of the TME (33), cleaved mbIL-15 activates enzymatic activity and the transcription of ADAM17 on a very broad cellular spectrum that amplifies the IL-15/ADAM17 loop, thus generating an important immune escape mechanism in the metastatic tumors. Subsequently, we investigated the correlation between increased intra-tumoral IL-15 expression in stage IV with the plasmatic levels of the sIL-15/IL-15R complex in non-lympho-depleted metastatic melanoma patients. Our data show that 26% of these patients presented with consistently high plasmatic levels of this soluble complex at different time points, suggesting that secretion of the sIL-15/IL-15R α complex may occur for a long period of time. Our data on metastatic melanoma patients differ from previously published data reporting high plasmatic levels of the sIL-15/IL-15R α complex in all eight metastatic melanoma patients analyzed (23). However, a major difference between the two groups of metastatic patients is that those reported on by Bergamaschi et al. were lympho-depleted (23), a condition that causes the temporary suppression of “cellular sinks”, resulting in rapid increases in levels of homeostatic cytokines such as plasmatic IL-15 (48, 49). Relatedly, we show that after refeeding peripheral blood NK cells expanded for 12 days in rIL-2 with the engineered IL-15cplx (16), there was a significant decrease of NK growth rate and levels of cytotoxic activity against K562 and NALM-18 target cells.

Notably, although the *in vitro* exposure of hyperagonist freshly isolated NK cells for 5 days to IL-15 efficiently induced high levels of cytolytic activity against target cells, the addition of IL-15 hyperagonist to rIL-2 pre-activated NK cells resulted in a significant reduction of their cytolytic activity. This shows that *in vitro* exposure to IL-15 hyperagonist can indeed cause the direct functional impairment of pre-activated NK cells in the absence of autologous “regulatory” immune cells (26). In this context, previous studies have shown that melanoma cell lines can block NK cells’ lytic function through different mechanisms (30, 50, 51).

As a further step, we tried to corroborate the experimental data by associating a public dataset analysis on melanoma patients. This approach indicates that (i) in stages II and III, high IL-15, and IL-15R α expression correlates with a good OS, but this positive correlation is lost in stage IV, and (ii) strong IL-15 and IL-15R α expressions significantly correlate with the high level of expression

of CD5, a marker present on infiltrating T lymphocytes (TILs), and of NKP46, a NK-specific activating receptor, and their high level of expression strongly correlates with a better OS in stages II and III, but not in stage IV. However, this last conclusion should be tempered and interpreted with caution due to the small number of patients listed in stage IV.

These data suggest that intra-tumoral IL-15 displays a biphasic role in melanoma evolution; there is a positive immune effect that is preserved up to stage III, but that is lost during stage IV. These events strongly correlate with the evolution in the interactions between intra-tumoral IL-15 and T cells reported in the recent literature (42, 43, 45). Indeed, T_{RM} cells ($CD8^+/CD103^+/CD69^+/CD44^+$) in normal skin lack immune checkpoints and are critical for protection against melanoma by eliminating major histocompatibility complex (MHC) class I positive melanoma cells (42–45). T_{RM} cells, generated in metastatic melanomas, are functional despite the expression of the immune checkpoints PD-1 and LAG3 (52). However, the excessive expression of immune checkpoints on T cells limits their cytotoxic potential. Indeed, scRNA-seq data from 25 melanoma patients identifies a large population of $CD8^+$ T cells showing continuous progression from early effector $CD8^+$ T cells into dysfunctional $CD8^+$ T cells, characterized by the progressive activation of immune checkpoint gene expression (53). Thus, the IL-15-dependent proliferation of $CD8^+$ T cells with high levels of expression of IL-15-induced immune checkpoints (54), associated with increased intra-tumoral IL-15 expression during stage IV, finally leads to the expansion of dysfunctional non-cytotoxic $CD8^+$ T cells.

Human melanoma cells are characterized by the heterogeneous expression of HLA-I molecules. Thus, HLA-I negative melanoma cells will be unaffected by the activity of effector T cells (55), but susceptible to that of NK cells (35). In this context, repeated stimulation with IL-15 hyperagonists in pre-clinical models is characterized, during the first stimulation, by the synchronous amplification of NK cells and $CD8^+/CD44^+$ T cells. These T cells, upon successive rounds of stimulation, inhibit IL-15-induced NK cell expansion and their functional activation (26). Moreover, a recent study shows that a second cycle of the superagonist N-803 injection may lead to reduced NK cell response in patients bearing metastatic non-small cell lung cancer who were included in a phase Ib trial (56).

On the other hand, data from the literature show that in NK cells, the expression of immune checkpoints causes functional anergy, but with mechanisms different from those reported in T cells. For instance, resting and activated NK cells intracellularly express PD-1 RNA and protein that does not interfere with NK cytolytic function (57). In contrast, PD1 surface expression may be detected and mediate NK cell inhibition only in NK cells derived from neoplastic or CMV-infected patients (58, 59). Remarkably, PD-1 is detected on the surfaces of NK cells only in response to combined treatment with IL-12, IL-15, IL-18, and steroids (60). Moreover, a recent study demonstrated that LAG3 is expressed at very low levels in activated NK cells, but that its expression is substantially increased in adaptive NK cells that are chronically exposed to CMV-infected cells (61). Importantly, these cells demonstrate low activity against infected tumor cells. Thus, based

on these results, we propose that during stages II and III, hyperagonist IL-15 isoforms, present in the TME, may stimulate NK cell cytotoxicity. In contrast, during stage IV, the increased levels of hyperagonist IL-15, sustained over a long period, and of additional soluble inhibitory factors (59) in the TME could cause NK cell functional impairment also through the induced expression of PD-1 and LAG3 (58–61).

Thus, continuous stimulation with IL-15 hyperagonist over time could lead to NK cells becoming hypo-responsive and therefore incapable of killing HLA-I low/negative melanoma cells (62), and also to dysfunctional T_{RM} -like cells being unable to eliminate HLA-I positive melanoma cells (31, 53). Therefore, based on the above mentioned data, we propose that an imbalance in the production/secretion of the sIL-15/IL-15R α complex may occur in a subgroup of metastatic patients. This could lead to permanently high plasmatic levels of the soluble complex that could directly or indirectly impair the function of autologous NK cells or, in adoptive immunotherapy, of infused pre-activated NK cells, pointing to the existence of a novel NK cell immune escape mechanism.

In conclusion, melanoma appears to display complex mechanisms of immune activation and regulation that have not been completely clarified, and in which, for instance, the possible role of IL-15/IL-15R α complex and isoforms has been underestimated (60). In this context, several reports indicate a constant rise in the incidence of melanoma in childhood and adolescence, and this trend is largely due to increased UV exposure (1). Since skin exposure to UV-B rays causes rapidly increased production of IL-15 (6), which modifies the cutaneous microenvironment since childhood, it seems conceivable that this event may be related both to the early development of pediatric melanomas and to the appearance of delayed lesions in adults. Thus, we propose that the presence of mbIL-15 and secreted IL-15/IL-15R α complexes could in early tumor stages promote the production of cytotoxic lymphocytes cells (T and NK cells), but promote the accumulation of dysfunctional tumor infiltrated lymphocytes in stage IV. It is possible that this bias could be counteracted by therapeutic strategies that combine the use of checkpoint inhibitors and IL-15 inhibitors, such as neutralizing IL-15 monoclonal antibodies (mAbs) or small chemical compounds (63).

Data availability statement

The original contributions presented in the study are included in the article/Supplementary Material. Further inquiries can be directed to the corresponding author.

Ethics statement

The use of human overflow plasmas and the research protocol were approved by the Clinical and Research Center and the National Cancer Institute (IST, Genoa, Italy -OMA12.007- and by “comitato etico regionale CER Liguria”: 046REG2017. Buffy coats were collected from volunteer blood donors admitted to the blood

transfusion service of OPBG. The Ethical Committee of OPBG approved the study (825/2014) that was conducted in accordance with the ethical principles stated in the Declaration of Helsinki.

Author contributions

Contributed to research conception and planning: BA, IC, LM, EMO, CS, EMa, and SDM. Development of methodology: SDM, PFF, AP, NT, VP, FRM, SS, CS, SE, MM, and DH. Performed experiments, acquisition of data, acquired and managed patients, provided facilities, and so on: SDM, PFF, NT, SS and CS. Analysis and interpretation of data: BA, CI, PV, and SDM. Performed immunohistochemical analysis: MP, EMu and SDM. Performed dataset analysis: SE, MM, DH, and SDM. Study supervision: BA, IC, LM, EMa, EMO, PV, and SDM. Writing, review, and/or revision of the manuscript: BA, IC, LM, PV, NT, EMa, EMO, and SDM. Yielded materials essential for the research and contributed to project planning: GP, MG, EMO, SB. All authors contributed to the article and approved the submitted version.

Funding

This work was supported by grants from AIRC Special Program Metastatic disease: the key unmet need in oncology 5 per mille 2018 ID 21147 to LM. Italian Ministry of Health, project Code RF-2016-02362288 (to GP). SDM was supported by an AIRC fellowship for Italy. RM was supported by Fondazione Umberto Veronesi. Elterninitiative Leukämie-und tumorkranker Kinder Würzburg e.V.” and “Aktion Regenbogen für Leukämie-und tumorkranke Kinder Main-Tauber e.V.” to IC. Deutsche Forschungsgemeinschaft

N° 470198222 to IC. This work was supported also by the Italian Ministry of Health with “Current Research” funds.

Conflict of interest

The authors declare that the research was conducted in the absence of any commercial or financial relationships that could be construed as a potential conflict of interest.

Publisher's note

All claims expressed in this article are solely those of the authors and do not necessarily represent those of their affiliated organizations, or those of the publisher, the editors and the reviewers. Any product that may be evaluated in this article, or claim that may be made by its manufacturer, is not guaranteed or endorsed by the publisher.

Supplementary material

The Supplementary Material for this article can be found online at: <https://www.frontiersin.org/articles/10.3389/fimmu.2023.1183668/full#supplementary-material>

SUPPLEMENTARY FIGURE 1

Correlation between IL-15, IL-15R α , CD5 and NKp46. Correlation between CD5, NKp46, and OS at different stages. Using the public dataset (TCGA), different analyses were performed. Correlation between expression of IL-15, IL-15R α , CD5 (T cell marker), and NKp46 (NK marker) in human melanomas (A). Panels (B, C) show the OS based on the levels of expression of CD5 and NKp46 at the different stages of melanomas. IL-15, interleukin-15; NK, natural killer; OS, overall survival; TCGA, The Cancer Genome Atlas.

References

- Austin MT, Xing Y, Hayes-Jordan AA, Lally KP, Cormier JN. Melanoma incidence rises for children and adolescents: an epidemiologic review of pediatric melanoma in the united states. *J Pediatr Surg* (2013) 48(11):2207–13. doi: 10.1016/j.jpedsurg.2013.06.002
- Lange JR, Palis BE, Chang DC, Soong SJ, Balch CM. Melanoma in children and teenagers: an analysis of patients from the national cancer data base. *J Clin Oncol* (2007) 25(11):1363–8. doi: 10.1200/JCO.2006.08.8310
- Strouse JJ, Fears TR, Tucker MA, Wayne AS. Pediatric melanoma: risk factor and survival analysis of the surveillance, epidemiology and end results database. *J Clin Oncol* (2005) 23(21):4735–41. doi: 10.1200/JCO.2005.02.899
- Scordi IA, Vincek V. Timecourse study of UVB-induced cytokine induction in whole mouse skin. *Photodermatol Photoimmunol Photomed* (2000) 16(2):67–73. doi: 10.1034/j.1600-0781.2000.d01-6.x
- Weichenthal M, Godorr M, Altenhoff J, Neuber K, Breitbart EW. Effects of whole-body UVB irradiation on cytokine production by peripheral blood mononuclear cells from stage I melanoma patients. *Arch Dermatol Res* (2000) 292(7):348–53. doi: 10.1007/s004030000140
- Mohamadzadeh M, Takashima A, Dougherty I, Knop J, Bergstresser PR, Cruz PD Jr. Ultraviolet b radiation up-regulates the expression of IL-15 in human skin. *J Immunol* (1995) 155(9):4492–6. doi: 10.4049/jimmunol.155.9.4492
- Waldmann TA. Interleukin-15 in the treatment of cancer. *Expert Rev Clin Immunol* (2014) 10(12):1689–701. doi: 10.1586/1744666X.2014.973856
- Fiore PF, Di Matteo S, Tumino N, Mariotti FR, Pietra G, Ottonello S, et al. Interleukin-15 and cancer: some solved and many unsolved questions. *J Immunother Cancer* (2020) 8(2). doi: 10.1136/jitc-2020-001428
- Anderson DM, Kumaki S, Ahdieh M, Bertles J, Tometsko M, Loomis A, et al. Functional characterization of the human interleukin-15 receptor alpha chain and close linkage of IL15RA and IL2RA genes. *J Biol Chem* (1995) 270(50):29862–9. doi: 10.1074/jbc.270.50.29862
- Pereno R, Giron-Michel J, Gaggero A, Cazes E, Meazza R, Monetti M, et al. IL-15/IL-15R α intracellular trafficking in human melanoma cells and signal transduction through the IL-15R α . *Oncogene* (2000) 19(45):5153–62. doi: 10.1038/sj.onc.1203873
- Muller JR, Waldmann TA, Kruhlak MJ, Dubois S. Paracrine and transpresentation functions of IL-15 are mediated by diverse splice versions of IL-15R α in human monocytes and dendritic cells. *J Biol Chem* (2012) 287(48):40328–38. doi: 10.1074/jbc.M112.378612
- Olsen SK, Ota N, Kishishita S, Kukimoto-Niino M, Murayama K, et al. Crystal structure of the interleukin-15.interleukin-15 receptor alpha complex: insights into trans and cis presentation. *J Biol Chem* (2007) 282(51):37191–204. doi: 10.1074/jbc.M706150200
- Giron-Michel J, Giuliani M, Fogli M, Brouty-Boyé D, Ferrini S, et al. Membrane-bound and soluble IL-15/IL-15R α complexes display differential signaling and functions on human hematopoietic progenitors. *Blood* (2005) 106(7):2302–10. doi: 10.1182/blood-2005-01-0064
- Dubois S, Mariner J, Waldmann TA, Tagaya Y. IL-15R α recycles and presents IL-15 in trans to neighboring cells. *Immunity* (2002) 17(5):537–47. doi: 10.1016/s1074-7613(02)00429-6
- Neely GG, Epelman S, Ma LL, Colarusso P, Howlett CJ, Amankwah EK. Monocyte surface-bound IL-15 can function as an activating receptor and participate

- in reverse signaling. *J Immunol* (2004) 172(7):4225–34. doi: 10.4049/jimmunol.172.7.4225
16. Mortier E, Quemener A, Vusio P, Lorenzen I, Boublik Y. Soluble interleukin-15 receptor alpha (IL-15R alpha)-sushi as a selective and potent agonist of IL-15 action through IL-15R beta/gamma. hyperagonist IL-15 x IL-15R alpha fusion proteins. *J Biol Chem* (2006) 281(3):1612–9. doi: 10.1074/jbc.M508624200
17. Bachanova V, Miller JS. NK cells in therapy of cancer. *Crit Rev Oncog* (2014) 19(1-2):133–41. doi: 10.1615/critrevoncog.2014011091
18. Klebanoff CA, Gattinoni L, Palmer DC, Muranski P, Ji Y, Hinrichs CS, et al. Determinants of successful CD8+ T-cell adoptive immunotherapy for large established tumors in mice. *Clin Cancer Res* (2011) 17(16):5343–52. doi: 10.1158/1078-0432.CCR-11-0503
19. Zhang M, Yao Z, Dubois S, Ju W, Müller JR, Waldmann TA. Interleukin-15 combined with an anti-CD40 antibody provides enhanced therapeutic efficacy for murine models of colon cancer. *Proc Natl Acad Sci USA* (2009) 106(18):7513–8. doi: 10.1073/pnas.0902637106
20. Talerico R, Cristiani CM, Staaf E, Garofalo C, Sottile R, Capone M, et al. IL-15, TIM-3 and NK cells subsets predict responsiveness to anti-CTLA-4 treatment in melanoma patients. *Oncoimmunology* (2017) 6(2):e1261242. doi: 10.1080/2162402X.2016.1261242
21. Barzegar C, Meazza R, Pereno R, Pottin-Clemenceau C, Scudeletti M, Brouty-Boyd D, et al. IL-15 is produced by a subset of human melanomas, and is involved in the regulation of markers of melanoma progression through juxtacrine loops. *Oncogene* (1998) 16(19):2503–12. doi: 10.1038/sj.onc.1201775
22. He YG, Mayhew E, Mellon J, Niederkorn JY. Expression and possible function of IL-2 and IL-15 receptors on human uveal melanoma cells. *Invest Ophthalmol Vis Sci* (2004) 45(12):4240–6. doi: 10.1167/iovos.04-0599
23. Bergamaschi C, Bear J, Rosati M, Beach RK, Alica C, Sowder R, et al. Circulating IL-15 exists as heterodimeric complex with soluble IL-15Ralpha in human and mouse serum. *Blood* (2012) 120(1):e1–8. doi: 10.1182/blood-2011-10-384362
24. Guo Y, Luan L, Rabacal W, Bohannon JK, Fensterheim BA, Hernandez A, et al. IL-15 superagonist-mediated immunotoxicity: role of NK cells and IFN-gamma. *J Immunol* (2015) 195(5):2353–64. doi: 10.4049/jimmunol.1500300
25. Elpek KG, Rubinstein MP, Bellemare-Pelletier A, Goldrath AW, Turley SJ. Mature natural killer cells with phenotypic and functional alterations accumulate upon sustained stimulation with IL-15/IL-15Ralpha complexes. *Proc Natl Acad Sci USA* (2010) 107(50):21647–52. doi: 10.1073/pnas.1012128107
26. Frutoso M, Morisseau S, Tamzalit F, Quémener A, Meghnm D, Leray I, et al. Emergence of NK cell hyporesponsiveness after two IL-15 stimulation cycles. *J Immunol* (2018) 201(2):493–506. doi: 10.4049/jimmunol.1800086
27. Felices M, Lenvik AJ, McElmurry R, Chu S, Hinderlie P, Bendzick L, et al. Continuous treatment with IL-15 exhausts human NK cells via a metabolic defect. *JCI Insight* (2018) 3(3). doi: 10.1172/jci.insight.96219
28. Azzi S, Gallerne C, Romei C, Le Coz V, Gangemi R, Khawam K, et al. Human renal normal, tumoral, and cancer stem cells express membrane-bound interleukin-15 isoforms displaying different functions. *Neoplasia* (2015) 17(6):509–17. doi: 10.1016/j.neo.2015.06.002
29. Canzonetta C, Pelosi A, Di Matteo S, Veneziani I, Tumino N, Vacca P, et al. Identification of neuroblastoma cell lines with uncommon TAZ(+)/mesenchymal stromal cell phenotype with strong suppressive activity on natural killer cells. *J Immunother Cancer* (2021) 9(1). doi: 10.1136/jitc-2020-001313
30. Balsamo M, Vermi W, Parodi M, Pietra G, Manzini C, Queirolo P, et al. Melanoma cells become resistant to NK-cell-mediated killing when exposed to NK-cell numbers compatible with NK-cell infiltration in the tumor. *Eur J Immunol* (2012) 42(7):1833–42. doi: 10.1002/eji.201142179
31. Anthony SM, Howard ME, Hailemichael Y, Overwijk WW, Schluns KS. Soluble interleukin-15 complexes are generated *in vivo* by type I interferon dependent and independent pathways. *PLoS One* (2015) 10(3):e0120274. doi: 10.1371/journal.pone.0120274
32. Mishra HK, Dixon KJ, Pore N, Felices M, Miller JS, Walcheck B. Activation of ADAM17 by IL-15 limits human NK cell proliferation. *Front Immunol* (2021) 12:711621. doi: 10.3389/fimmu.2021.711621
33. Lorenzen I, Lokau J, Korpyss Y, Oldefest M, Flynn CM, Künzel U, et al. Control of ADAM17 activity by regulation of its cellular localisation. *Sci Rep* (2016) 6:35067. doi: 10.1038/srep35067
34. Dirican N, Karakaya YA, Gunes S, Daloglu FT, Dirican A. Association of intratumoral tumour-infiltrating lymphocytes and neutrophil-to-lymphocyte ratio is an independent prognostic factor in non-small cell lung cancer. *Clin Respir J* (2017) 11(6):789–96. doi: 10.1111/crj.12417
35. Sivori S, Meazza R, Quintarelli C, Carlomagno S, Della Chiesa M, Falco M, et al. NK cell-based immunotherapy for hematological malignancies. *J Clin Med* (2019) 8(10). doi: 10.3390/jcm8101702
36. Kroemer A, Xiao X, Degauque N, Edtinger K, Wei H, Demirci G, et al. The innate NK cells, allograft rejection, and a key role for IL-15. *J Immunol* (2008) 180(12):7818–26. doi: 10.4049/jimmunol.180.12.7818
37. Liu RB, Engels B, Schreiber K, Ciszewski C, Schietinger A, Schreiber H, et al. IL-15 in tumor microenvironment causes rejection of large established tumors by T cells in a noncognate T cell receptor-dependent manner. *Proc Natl Acad Sci USA* (2013) 110(20):8158–63. doi: 10.1073/pnas.1301022110
38. Santana Carrero RM, Beceren-Braun F, Rivas SC, Hegde SM, Gangadharan A, Plote D, et al. IL-15 is a component of the inflammatory milieu in the tumor microenvironment promoting antitumor responses. *Proc Natl Acad Sci USA* (2019) 116(2):599–608. doi: 10.1073/pnas.1814642116
39. Bessard A, Sole V, Bouchaud G, Quémener A, Jacques Y. High antitumor activity of RLI, an interleukin-15 (IL-15)-IL-15 receptor alpha fusion protein, in metastatic melanoma and colorectal cancer. *Mol Cancer Ther* (2009) 8(9):2736–45. doi: 10.1158/1535-7163.MCT-09-0275
40. Judge SJ, Murphy WJ, Canter RJ. Characterizing the dysfunctional NK cell: assessing the clinical relevance of exhaustion, anergy, and senescence. *Front Cell Infect Microbiol* (2020) 10:49. doi: 10.3389/fcimb.2020.00049
41. Lopez-Soto A, Gonzalez S, Smyth MJ, Galluzzi L. Control of metastasis by NK cells. *Cancer Cell* (2017) 32(2):135–54. doi: 10.1016/j.ccell.2017.06.009
42. Steinhoff M, Ammourey AF, Ahmed HM, Gamal MFS, El Sayed MH. The unmet need for clinical guidelines on the management of patients with plaque psoriasis in Africa and the middle East. *Psoriasis (Auckl)* (2020) 10:23–8. doi: 10.2147/PTT.S264431
43. Khalil S, Bardawil T, Kurban M, Abbas O. Tissue-resident memory T cells in the skin. *Inflammation Res* (2020) 69(3):245–54. doi: 10.1007/s00011-020-01320-6
44. Malik BT, Byrne KT, Vella JL, Zhang P, Shabaneh TB, Steinberg SM, et al. Resident memory T cells in the skin mediate durable immunity to melanoma. *Sci Immunol* (2017) 2(10). doi: 10.1126/sciimmunol.aam6346
45. Park SL, Buzzai A, Rautela J, Hor JL, Hochheiser K, Efferm M, et al. Tissue-resident memory CD8(+) T cells promote melanoma-immune equilibrium in skin. *Nature* (2019) 565(7739):366–71. doi: 10.1038/s41586-018-0812-9
46. Wawro K, Wawro M, Strzelecka M, Czarnek M, Bereta J. The role of NF-kappaB and elk-1 in the regulation of mouse ADAM17 expression. *Biol Open* (2019) 8(2). doi: 10.1242/bio.039420
47. Azzi S, Bruno S, Giron-Michel J, Clay D, Devocelle A, Croce M, et al. Differentiation therapy: targeting human renal cancer stem cells with interleukin 15. *J Natl Cancer Inst* (2011) 103(24):1884–98. doi: 10.1093/jnci/djr451
48. Gattinoni L, Finkelstein SE, Klebanoff CA, Antony PA, Palmer DC, Spiess PJ, et al. Removal of homeostatic cytokine sinks by lymphodepletion enhances the efficacy of adoptively transferred tumor-specific CD8+ T cells. *J Exp Med* (2005) 202(7):907–12. doi: 10.1084/jem.20050732
49. Anthony SM, Rivas SC, Colpitts SL, Howard ME, Stonier SW, Schluns KS. Inflammatory signals regulate IL-15 in response to lymphodepletion. *J Immunol* (2016) 196(11):4544–52. doi: 10.4049/jimmunol.1600219
50. Pietra G, Vitale M, Moretta L, Mingari MC. How melanoma cells inactivate NK cells. *Oncoimmunology* (2012) 1(6):974–75. doi: 10.4161/onci.20405
51. Huergo-Zapico L, Parodi M, Cantoni C, Lavarello C, Fernández-Martínez JL, Petretto A, et al. NK-cell editing mediates epithelial-to-Mesenchymal transition via phenotypic and proteomic changes in melanoma cell lines. *Cancer Res* (2018) 78(14):3913–25. doi: 10.1158/0008-5472.CAN-17-1891
52. Edwards J, Wilmott JS, Madore J, Gide TN, Quek C, Tasker A, et al. CD103(+) tumor-resident CD8(+) T cells are associated with improved survival in immunotherapy-naïve melanoma patients and expand significantly during anti-PD-1 treatment. *Clin Cancer Res* (2018) 24(13):3036–45. doi: 10.1158/1078-0432.CCR-17-2257
53. Li H, van der Leun AM, Yofe I, Lubling Y, Gelbard-Solodkin D, van Akkooi ACJ, et al. Dysfunctional CD8 T cells form a proliferative, dynamically regulated compartment within human melanoma. *Cell* (2019) 176(4):775–89.e18. doi: 10.1016/j.cell.2018.11.043
54. Hakim MS, Jariah ROA, Spaan M, Boonstra A. Interleukin 15 upregulates the expression of PD-1 and TIM-3 on CD4(+) and CD8(+) T cells. *Am J Clin Exp Immunol* (2020) 9(3):10–21.
55. Cormier JN, Hijazi YM, Abati A, Fetsch P, Bettinotti M, Steinberg SM, et al. Heterogeneous expression of melanoma-associated antigens and HLA-A2 in metastatic melanoma *in vivo*. *Int J Cancer* (1998) 75(4):517–24. doi: 10.1002/(sici)1097-0215(19980209)75:4<517::aid-ijc5>3.0.co;2-w
56. Wrangle JM, Velcheti V, Patel MR, Garrett-Mayer E, Hill EG, Ravenel JG, et al. ALT-803, an IL-15 superagonist, in combination with nivolumab in patients with metastatic non-small cell lung cancer: a non-randomised, open-label, phase 1b trial. *Lancet Oncol* (2018) 19(5):694–704. doi: 10.1016/S1470-2045(18)30148-7
57. Mariotti FR, Petrini S, Ingegnere T, Tumino N, Besi F, Scordamaglia F, et al. PD-1 in human NK cells: evidence of cytoplasmic mRNA and protein expression. *Oncoimmunology* (2019) 8(3):1557030. doi: 10.1080/2162402X.2018.1557030
58. Pesce S, Greppi M, Grossi F, Del Zotto G, Moretta L, Sivori S, et al. PD-1/PD-Ls checkpoint: insight on the potential role of NK cells. *Front Immunol* (2019) 10:1242. doi: 10.3389/fimmu.2019.01242
59. Tumino N, Martini S, Munari E, Scordamaglia F, Besi F, Mariotti FR, et al. Presence of innate lymphoid cells in pleural effusions of primary and metastatic tumors: functional analysis and expression of PD-1 receptor. *Int J Cancer* (2019) 145(6):1660–68. doi: 10.1002/ijc.32262
60. Quatrini L, Vacca P, Tumino N, Besi F, Di Pace AL, Scordamaglia F, et al. Glucocorticoids and the cytokines IL-12, IL-15, and IL-18 present in the tumor

microenvironment induce PD-1 expression on human natural killer cells. *J Allergy Clin Immunol* (2021) 147(1):349–60. doi: 10.1016/j.jaci.2020.04.044

61. Lanuza PM, Pesini C, Arias MA, Calvo C, Ramirez-Labrada A, Pardo J. Recalling the biological significance of immune checkpoints on NK cells: a chance to overcome LAG3, PD1, and CTLA4 inhibitory pathways by adoptive NK cell transfer? *Front Immunol* (2019) 10:3010. doi: 10.3389/fimmu.2019.03010

62. Merino A, Zhang B, Dougherty P, Luo X, Wang J, Blazar BR, et al. Chronic stimulation drives human NK cell dysfunction and epigenetic reprogramming. *J Clin Invest* (2019) 129(9):3770–85. doi: 10.1172/JCI125916

63. Mortier E, Maillason M, Quemener A. Counteracting interleukin-15 to elucidate its modes of action in physiology and pathology. *J Interferon Cytokine Res* (2023) 43(1):2–22. doi: 10.1089/jir.2022.0198