



## Chronic myelogenous leukemia occurring in a chronic lymphocytic leukemia patient

Jenny Beaud, Thomas Modot, François Delhommeau, Ludovic Suner

### ► To cite this version:

Jenny Beaud, Thomas Modot, François Delhommeau, Ludovic Suner. Chronic myelogenous leukemia occurring in a chronic lymphocytic leukemia patient. *Clinical Case Reports*, 2018, 6 (8), pp.1655 - 1656. 10.1002/ccr3.1572 . inserm-04029198

**HAL Id: inserm-04029198**

**<https://inserm.hal.science/inserm-04029198>**

Submitted on 14 Mar 2023

**HAL** is a multi-disciplinary open access archive for the deposit and dissemination of scientific research documents, whether they are published or not. The documents may come from teaching and research institutions in France or abroad, or from public or private research centers.

L'archive ouverte pluridisciplinaire **HAL**, est destinée au dépôt et à la diffusion de documents scientifiques de niveau recherche, publiés ou non, émanant des établissements d'enseignement et de recherche français ou étrangers, des laboratoires publics ou privés.

## CLINICAL IMAGE

# Chronic myelogenous leukemia occurring in a chronic lymphocytic leukemia patient

Jenny Beaud | Thomas Modot | François Delhommeau | Ludovic Suner 

Inserm, Centre de Recherche Saint-Antoine  
CRSA, APHP, Hôpital Saint-Antoine,  
Sorbonne Université, Paris, France

## Correspondence

Ludovic Suner, Inserm, Centre de  
Recherche Saint-Antoine CRSA, APHP,  
Hôpital Saint-Antoine, Sorbonne Université,  
Paris, France.  
Email: ludovic.suner@aphp.fr

## Key Clinical Message

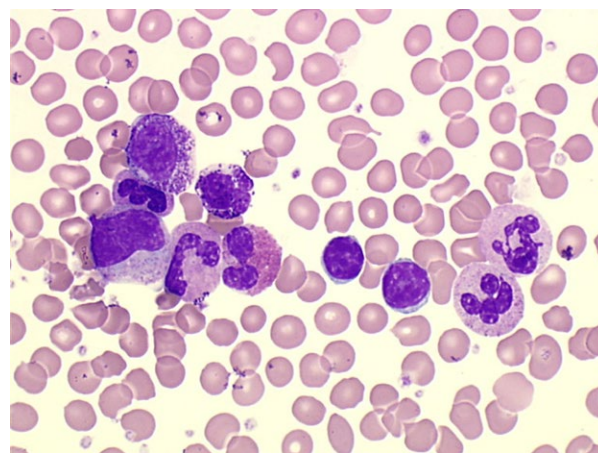
Occurrence of two different hematological malignancies is very infrequent, and it is nevertheless important not to neglect basic examinations in patients follow-up. A 65-year-old patient was referred to our institution for his chronic lymphocytic leukemia (CLL) checkup; we report the different steps leading to the diagnosis of a second hematological malignancy.

## KEYWORDS

chronic lymphocytic leukemia, chronic myeloid leukemia, diagnosis, hematology

A 65-year-old Caucasian male previously followed in our institution for a Binet A-stage chronic lymphocytic leukemia (CLL) presented for checkup. The patient had no particular complaint except being a little more tired than usual. Clinical examination revealed a splenomegaly but no other adenopathies, no fever, or weight loss.

Tests run on the plasma showed no particularity except elevated LDH (1198 UI/L, usual range 0-470), complete blood count showed a mild anemia (Hemoglobin = 120 g/L), thrombocytosis (platelets = 627 G/L), elevated leucocytes (120 G/L), and the automated analyzer notified numerous errors leading to a blood film examination (Figure 1). Beside 19% of the habitual CLL mature lymphocytes ( $19.39 \times 10^9/L$ ), we observed a very important increase in neutrophils and a myelemia accounting all together for 67% ( $80.4 \times 10^9/L$ ) of the nucleated cells. Eosinophils and basophils accounted, respectively, for 8% ( $9.7 \times 10^9/L$ ) and 5% ( $6.06 \times 10^9/L$ ) of the nucleated cells. This combination of findings suggested the diagnosis of a de novo chronic myeloid leukemia (CML). This hypothesis was later confirmed by cytogenetic analysis, with a Philadelphia chromosome in all the 29 mitosis analyzed, and by the molecular analysis with a positive M-BCR/ABL transcript. CLL features had remained unchanged since his last checkup (ie, a 5 Matutes score and a karyotype showing a del13q).



**FIGURE 1** Mature lymphocytes accompanied by mature neutrophils, eosinophil, basophil, and myelemia (blood film, magnification  $\times 1000$ )

As the patient's CLL had remained stable and the CML was at its chronic phase, it was decided to treat primarily the CML with 400 mg daily of imatinib.

CLL and CML are two of the most common leukemias among adults in western countries, but the occurrence of both of the diseases in the same patient is a very unusual situation and literature reporting those associations remains scarce.

In most reports, CML diagnosis follows CLL diagnosis, and molecular and cytogenetic studies suggest malignancies emerged from distinct clones.

## CONFLICT OF INTEREST

None declared.

## AUTHORSHIP

JB: contributed to the diagnosis (cytometric analysis) and wrote the first draft of the manuscript. TM: contributed to the diagnosis (cytological examination). FD: contributed to the diagnosis (molecular analysis), he also provided a critical vision of the manuscript. LS: supervised, corrected, and

reviewed the manuscript. All the authors read and approved the final manuscript.

## ORCID

Ludovic Suner  <http://orcid.org/0000-0002-5107-4961>

**How to cite this article:** Beaud J, Modot T, Delhommeau F, Suner L. Chronic myelogenous leukemia occurring in a chronic lymphocytic leukemia patient. *Clin Case Rep*. 2018;6:1655–1656. <https://doi.org/10.1002/ccr3.1572>