



HAL
open science

The matricellular protein hevin is involved in alcohol use disorder

Amaia Nuñez-del Moral, Paula C Bianchi, Iria Brocos-Mosquera, Augusto Anesio, Paola Palombo, Rosana Camarini, Fabio C Cruz, Luis F Callado, Vincent Vialou, Amaia M Erdozain

► To cite this version:

Amaia Nuñez-del Moral, Paula C Bianchi, Iria Brocos-Mosquera, Augusto Anesio, Paola Palombo, et al.. The matricellular protein hevin is involved in alcohol use disorder. *Biomolecules*, 2023, 10.3390/biom13020234 . inserm-03950405

HAL Id: inserm-03950405

<https://inserm.hal.science/inserm-03950405>

Submitted on 21 Jan 2023

HAL is a multi-disciplinary open access archive for the deposit and dissemination of scientific research documents, whether they are published or not. The documents may come from teaching and research institutions in France or abroad, or from public or private research centers.

L'archive ouverte pluridisciplinaire **HAL**, est destinée au dépôt et à la diffusion de documents scientifiques de niveau recherche, publiés ou non, émanant des établissements d'enseignement et de recherche français ou étrangers, des laboratoires publics ou privés.

1 Article

2 **The matricellular protein hevin is involved in alcohol use dis-**
3 **order**4 **Amaia Nuñez-del Moral^{1,2}, Paula C. Bianchi³, Iria Brocos-Mosquera¹, Augusto Anesio³, Paola Palombo³, Rosana**
5 **Camarini⁴, Fabio C. Cruz³, Luis F. Callado^{1,2,5}, Vincent Vialou^{6,*} and Amaia M. Erdozain^{1,2,*}**6 ¹ Department of Pharmacology, University of the Basque Country, UPV/EHU, Bizkaia, Spain7 ² Centro de Investigación Biomédica en Red de Salud Mental (CIBERSAM), Spain8 ³ Department of Pharmacology, Universidade Federal de São Paulo - UNIFESP, São Paulo, Brazil9 ⁴ Department of Pharmacology, Instituto de Ciências Biomédicas, Universidade de São Paulo, São Paulo, Brazil10 ⁵ Biocruces-Bizkaia Health Research Institute, Bizkaia, Spain11 ⁶ Sorbonne Université, INSERM, CNRS, Neuroscience Paris Seine, Paris, France12 * Correspondence: Amaia Erdozain, amaia_erdzain@ehu.eus, +34 601 28 48; Vincent Vialou, vin-
13 cent.vialou@inserm.fr, +33 1 44 27 60 98

14 Running title: Hevin is altered in AUD and modulates alcohol consumption

15 **ABSTRACT:** Astrocytic-secreted matricellular proteins have been shown to influence
16 various aspects of synaptic function. More recently, they have been found altered in
17 animal models of psychiatric disorders such as drug addiction. Hevin (also known as
18 Sparc-like 1) is a matricellular protein highly expressed in the adult brain that has been
19 implicated in resilience to stress, suggesting a role in motivated behaviors. To address the
20 possible role of hevin in drug addiction, we quantified its expression in human post-
mortem brains and in animal models of alcohol abuse. Hevin mRNA and protein ex-
pression were analyzed in postmortem human brain of subjects with an antemortem
diagnosis of alcohol use disorder (AUD, n = 25) and controls (n = 25). All the studied
brain regions (prefrontal cortex, hippocampus, caudate nucleus and cerebellum) in AUD
subjects showed an increase in hevin levels either at mRNA or/and protein levels. To test
if this alteration was the result of alcohol exposure or indicative of a susceptibility factor
to alcohol consumption, mice were exposed to different regimens of intraperitoneal al-
cohol administration. Hevin protein expression was increased in the nucleus accumbens
after alcohol withdrawal and reinstatement. The role of hevin in AUD was determined
using an RNA interference strategy to downregulate hevin expression in nucleus
accumbens astrocytes, which led to increased ethanol consumption. Additionally, etha-
nol reinstatement after withdrawal increased hevin levels in blood plasma. Altogether,
these results support a novel role for hevin in the neurobiology of AUD.21 **Citation:** Nuñez-del Moral, A.;
22 Bianchi, P.C.; Brocos-Mosquera, I.;
23 Anesio, A.; Palombo, P.; Camarini,
24 R.; Cruz, F.C.; Callado, L.F.; Vialou,
25 V.; Erdozain, A.M. **The matricellular**
26 **protein hevin is involved in alcohol**
27 **use disorder.** *Biomolecules* 2022, 12, 27
28 <https://doi.org/10.3390/xxxxx>

29 Academic Editor(s):

30 Received: date

31 Accepted: date

32 Published: date

33 **Publisher's Note:** MDPI stays
34 neutral with regard to jurisdictional
35 claims in published maps and
institutional affiliations.36 **Keywords:** hevin; astrocytes; alcohol use disorder; human post-mortem brain; Sparc137 **Copyright:** © 2022 by the authors.
38 Submitted for possible open access
39 publication under the terms and
40 conditions of the Creative Commons
41 Attribution (CC BY) license
42 ([https://creativecommons.org/licenses](https://creativecommons.org/licenses/by/4.0/)
43 [by/4.0/](https://creativecommons.org/licenses/by/4.0/)).36 **1. INTRODUCTION**37 Alcohol use disorder (AUD) is one of the psychiatric diseases that most negatively
38 affect global health, society, and the economy [1,2]. Ethanol is considered the most dan-
39 gerous and harmful drug of abuse, with an estimated 5.1% of the total disease burden (in
40 terms of disability-adjusted life years) and 5.3% of deaths worldwide [3,4]. AUD is
41 characterized by compulsion to take or seek alcoholic beverages, craving, withdrawal
42 symptoms, tolerance and relapse [5,6]. Chronic ethanol consumption alters the activity
43 and the long-term function of brain regions such as the prefrontal cortex (PFC), hippo-
campus (HIP), striatum, amygdala (AMY) or cerebellum (CB), which result in cognitive

45 impairments, learning and memory deficits, and a shift from positive to negative rein-
46 forcement [7,8]. An essential aspect of AUD is the high rate of relapse, depicted as re-
47 current abstinence periods followed by reinstatement of consumption. This pathological
48 pattern of alcohol consumption might take part in the progression and deepening of the
49 disorder [9–11]. Ethanol's effects on the brain involve alterations in synaptic plasticity
50 and morphological reorganization of circuits implicated in reward, stress and executive
51 functions. Although the contribution of various molecular mediators, including mono-
52 amines, neuropeptides, and stress hormones, has been recognized [8], no key genetic
53 switch mediating significant traits of the AUD phenotype has been characterized.

54 Astrocytes play critical roles in central nervous system homeostasis and are impli-
55 cated in the pathogenesis of neurological and psychiatric conditions, including drug de-
56 pendence [12,13]. In regard to AUD, activation of mouse cortical astrocytes by
57 chemogenetic approaches increases alcohol consumption and alters its locomotor and
58 sedative effects [14]. Likewise, activation of astrocytes in the nucleus accumbens (NAc)
59 potentiates the rewarding properties of alcohol and decreases alcohol self-administration
60 after prolonged abstinence [15]. Chronic alcohol exposure profoundly modifies the
61 transcriptomic profile of astrocytes *in vitro*, *in utero* and *in vivo*, with changes in the ex-
62 pression of genes involved in cellular differentiation, metabolism, gene transcription,
63 extracellular matrix composition and synaptogenesis [16–19]. Astrocytic synaptogenic
64 factors promote excitatory synapse formation, maturation, and refinement during de-
65 velopment [12,20–24]. In particular, hevin, a matricellular protein with synaptogenic
66 properties secreted by astrocytes, is induced in prenatal and postnatal animal models of
67 AUD[18,25].

68 Hevin (also known as SPARC-like 1 [SPARCL1], SC1, ECM2 or Mast9) specifically
69 promotes the formation and maintenance of thalamocortical excitatory synapses, by
70 linking presynaptic neurexin-1 α and postsynaptic neuroligin-1B [21,22,24,26]. It is highly
71 expressed in human and mouse adult brain [27–32], in astrocytes and parvalbumin in-
72 terneurons, and in a restricted number of other neuronal subpopulations, including
73 glutamatergic neurons in cortical and subcortical regions [30]. Importantly, hevin has
74 been implicated in resilience to stress, showing an antidepressant-like effect in a model of
75 social defeat [33].

76 Given the effects of alcohol on the limbic system, and the role of hevin in structural
77 and synaptic plasticity, we explored the role of hevin in AUD. The pattern of hevin ex-
78 pression was assessed in human cortico-limbic structures associated with AUD in post-
79 mortem brains from AUD subjects. We also assessed hevin levels in the brain and blood
80 of mice exposed to different regimens of intraperitoneal alcohol administration. In addi-
81 tion, we evaluated the contribution of astrocytic hevin in the nucleus accumbens to eth-
82 anol preference and consumption by downregulating its expression using RNA inter-
83 ference.

84 2. MATERIALS AND METHODS

85 2.1. Human samples

86 Human samples were obtained at autopsy in the Basque Institute of Legal Medicine
87 (Bilbao, Spain). Brain dissections were performed at the moment of the autopsy for the
88 collection of PFC, HIP, caudate nucleus (CAU) and CB samples, which were immediately
89 stored at -70°C until assay. A blood toxicological study by the National Institute of Tox-
90 icology (Madrid), using different standard methods (including radioimmunoassay, en-
91 zymatic immunoassay, high-performance liquid chromatography and gas chromatog-
92 raphy-mass spectrometry) determined the presence or not of ethanol, antidepressants,
93 antipsychotics and psychotropic drugs at the time of death. The study included 75 sub-
94 jects divided into three experimental groups: 25 subjects with an antemortem diagnosis
95 of AUD, 25 subjects with an antemortem diagnosis of major depression and 25 control
96 subjects, with no antemortem history of any neuropsychiatric disease. The antemortem

97 diagnoses were performed by psychiatrists based on DMS-IV and ICD-10 criteria. The
98 depression group was included as a control of disease-specific changes. Each subject with
99 AUD was matched by age, sex and postmortem delay with a control and depression
100 subject; none of these parameters were statistically different between groups ($p > 0.05$,
101 one-way ANOVA). A full description of the demographic characteristics of all the sub-
102 jects is shown in Supplementary Table 1. Samples from matched AUD, depression and
103 control subjects were processed and tested in parallel. The study was performed in com-
104 pliance with legal policy and ethical review boards for postmortem brain studies.

105 2.2. Animals and treatments

106 All experiments were performed in strict conformity with the European Union laws
107 and policies for use of animals in neuroscience research (European Committee Council
108 Directive 2010/63/EU). C57BL/6J mice were housed in groups of five animals per cage
109 under standard conditions 23°C and a 12 h light/dark cycle, with food and water pro-
110 vided *ad libitum*. Experiments were performed on 2 to 4 month old mice.

111 Mice were exposed to four different ethanol regimens (Fig. 3A) [34]. They were in-
112 jected intraperitoneally (i.p.) either with saline or ethanol for 13 days, not injected for the
113 following 3 days (withdrawal), and then given a challenge dose of saline or ethanol (re-
114 instatement). The four resulting experimental groups were as follows: 1) saline – saline
115 (S-S), 2) saline – ethanol (S-E), 3) ethanol-saline (E-S) and 4) ethanol-ethanol (E-E). A re-
116 warding dose of ethanol, 1.75 g ethanol/kg, or 0.9% NaCl solution were used [35].

117 Mice were killed 24 h after the last injection, and brain dissections were performed
118 immediately after. Five brain areas were collected with bilateral punches: frontal cortex
119 (FC), amygdala (AMY), hippocampus (HIP), dorsal striatum (CPu) and nucleus
120 accumbens (NAc). Blood was collected in EDTA-coated tubes and centrifuged to obtain
121 plasma. All the samples were stored at -70°C until their preparation for Western blot
122 assays.

123 For hevin downregulation in astrocytes of the NAc, mice were anesthetized with an
124 i.p. mixture containing 100 mg/kg of ketamine and 10 mg/kg of xylazine, placed in a
125 stereotaxic frame, and injected with the adenovirus AAV2.5-GFAP-EmGFP-miR-hevin
126 (9.4×10^{12} vg/ml) or the control viral vector AAV5.GFAP.eGFP.WPRE.hGH
127 (9.1×10^{12} vg/ml, University of North Carolina, USA). Coordinates (with respect to
128 bregma) used to target the NAc were: anteroposterior +1.6, mediolateral +1.45, and
129 dorsoventral -4.3, with an angle of 10° from the midline. The virus was injected at a
130 volume of 0.5 μl , at a rate of 0.1 $\mu\text{l}/\text{min}$. Behavioral tests were performed 3 weeks after
131 surgery. The correct injection site and the expression of the transgene were confirmed by
132 immunohistochemistry.

133 2.3. Sample preparation

134 For Western blot experiments both human and animal brain samples were pro-
135 cessed as previously described [31], with the following modifications: 1) in human brain
136 samples the nuclear fraction was removed for all of the total homogenates, and 2) in mice
137 brain punches the homogenization was performed by sonication (QSONICA Q55), due to
138 the small sample volume. Protein content was measured by the Bradford method [36]
139 and the samples were stored at -70°C until analyzed by Western blot. Mouse plasma
140 samples were homogenized in buffer supplemented with protease and phosphatase in-
141 hibitors (5 mM Tris-HCl pH 7.4, 50 $\mu\text{L}/\text{g}$ of Sigma protease inhibitor cocktail, 5 mM
142 Na_3VO_4 and 10 mM NaF) before sonication (QSONICA Q55) and stored at -70°C until
143 analyzed by Western blot.

144 2.4. Real-time reverse transcription polymerase chain reaction (RT-qPCR)

145 mRNA extraction, cDNA synthesis and qPCR of the four human brain regions were
146 performed as previously described [37] with minor modifications. The qPCR reactions

147 were performed on a StepOne™ system using TaqMan™ Fast Universal Master Mix
148 (Thermo Fisher) and the specific gene probes for hevin and the housekeeping genes
149 glyceraldehyde 3-phosphate dehydrogenase (*GAPDH*) and ribosomal protein S13
150 (*RPS13*) (TaqMan® gene expression assay Hs00949886_m1, Hs99999905_m1 and
151 Hs01945436_u1, respectively). Hevin mRNA expression was normalized to the expres-
152 sion of the *GAPDH* and *RPS13* housekeeping genes and with a reference sample (pool of
153 all samples for each brain region); and determined by the comparative Ct method ($\Delta\Delta Ct$),
154 where $\Delta\Delta Ct = (Ct(\text{hevin})_{\text{sample}} - Ct(\text{housekeeping})_{\text{sample}}) - (Ct(\text{hevin})_{\text{reference sample}} - Ct$
155 $(\text{housekeeping})_{\text{reference sample}})$ using StepOne™ Software v2.1. A negative internal control
156 (mQH₂O) was also included. The qPCRs were run in triplicates for each cDNA.

157 2.5. Western blot

158 Western blot experiments were performed as previously described [31]. In human
159 and mouse brain samples hevin immunoreactivity was normalized against the β -actin
160 signal. For mouse plasma samples, the Ponceau S staining confirmed the equal amount of
161 protein load. In all cases, a standard pool of total homogenate (from human or mouse
162 origin, respectively) was used as an external reference sample. The primary and second-
163 ary antibodies used for the detection of hevin and β -actin proteins are shown in Sup-
164 plementary Table 2.

165 2.6. Intermittent ethanol access schedule (IEA) in hevin knockdown mice

166 In order to measure the alcohol intake in the active period of the mice, one week
167 before starting the experiment, the light cycle was changed, with lights off at 9 a.m. and
168 on at 9 p.m., and both hevin knockdown (KD, $n = 7$) and control ($n = 7$) mice were indi-
169 vidualy housed, with water and food *ad libitum*. Mice were first habituated to two bottles
170 of water for 3 days. IEA was performed for a total of 18 days [38]; water and ethanol bot-
171 tles were placed in each cage every day at 9 a.m. and removed at 5 p.m.. The consumed
172 volume was measured after 4 h and 8 h of the beginning of the experiment, and the bot-
173 tles' position was switched every day to avoid possible bottle side preference bias. Eth-
174 anol concentration (w/v) was increased every 3 days in order to induce an alcohol intake
175 behavior. The initial ethanol concentration was 5%, followed by 10%, 15%, 20%, 3 days of
176 ethanol withdrawal, and 10% of ethanol as the reinstatement concentration. Ethanol so-
177 lutions were prepared by mixing 96% (v/v) ethanol with tap water. Mice were weighted
178 every 3 days. Ethanol preference (percentage of ethanol consumed from the total volume
179 for each measurement; $> 50\%$ was considered as a preference for ethanol) and consump-
180 tion (g ethanol/kg mouse ingested for each measurement) were calculated for each
181 mouse.

182 2.7. Immunohistochemistry

183 Mice were anesthetized with a lethal dose of pentobarbital at 150 mg/kg i.p. and
184 perfused intracardially with 4% paraformaldehyde in a phosphate-buffered solution.
185 Brains were removed and stored at 4°C in 4% paraformaldehyde until use. Brains were
186 cut on a vibratome in coronal sections of 40 μm . Slices were incubated in a blocking
187 buffer containing 0.2% gelatin and 0.25% triton in PBS for 1 h at room temperature, then
188 treated with antibodies against hevin (mSPARCL1 AF2836, 1:2000, R&D) or anti-GFP
189 (A010-pGFP-5, 1:2000, Badrilla) overnight at 4°C. After washing, slices were incubated
190 with a Cyanine Cy™3 conjugated secondary antibody for 2 h at room temperature
191 (Jackson ImmunoResearch, USA). Slices were incubated with DAPI
192 (4',6-diamidino-2-phenylindol, D9542, 1:15000, Sigma-Aldrich) 20 min at room temperature
193 before mounting with Fluoromount-G. All the slices were scanned on a NanoZoomer
194 2.0-HT (Hamamatsu Photonics, Hamamatsu City, Japan) for quantification, as previ-
195 ously described [30].

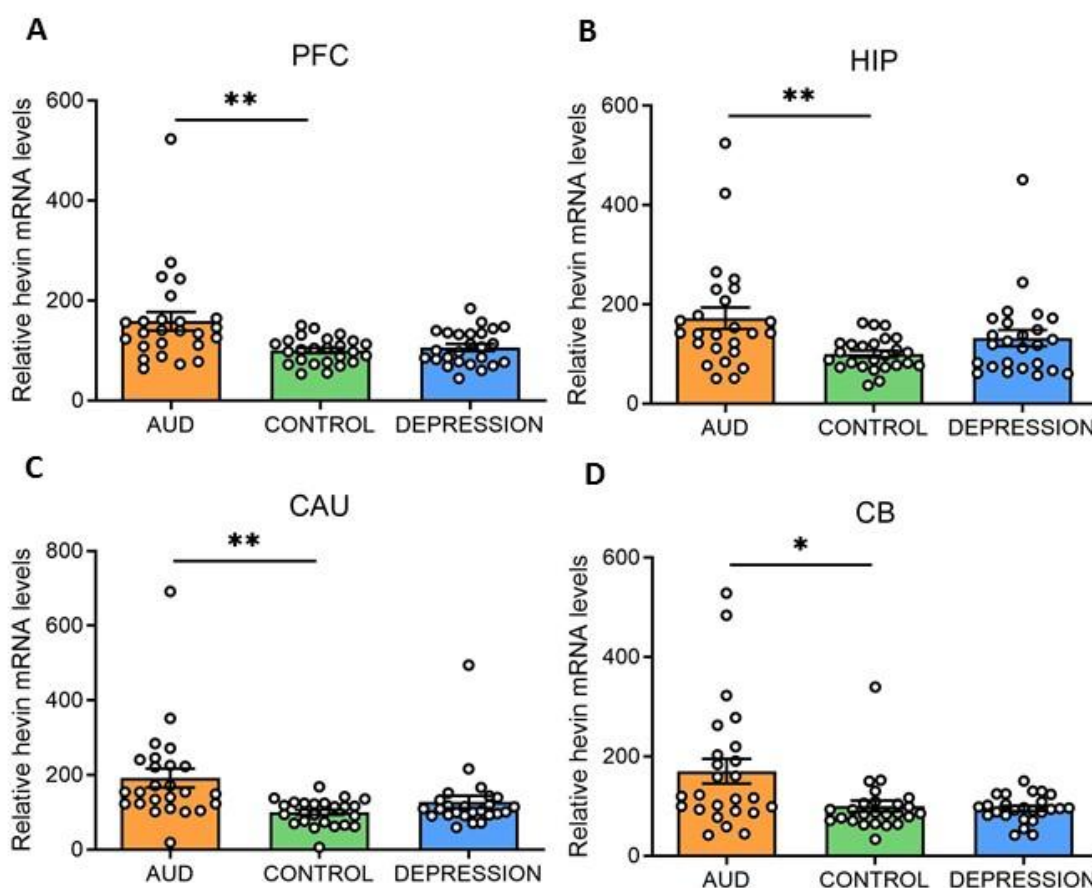
2.8. Statistical analysis

Statistical analysis was performed using GraphPad Prism 9®. Comparison of hevin mRNA and protein levels in the human brain between the AUD, depression and control groups was performed using one-way ANOVA followed by Dunnett's multiple comparisons test. Taking into account the large sample size ($n = 25$) and the high inter-subject variability in human brain morphology and configuration, data was considered normally distributed [39,40]. Data obtained in animal studies did not pass the D'Agostino and Pearson normality test and F-test for the equality of variances, so non-parametric statistical tests were used. Specifically, biochemical analyses in mouse brains and plasma were performed using the Kruskal-Wallis test followed by Dunn's multiple comparisons test. Differences between hevin KD mice and controls in ethanol preference and consumption were assessed with the Mann-Whitney test and the Friedman test was used for ethanol concentration data. Results were considered statistically significant when the p-value was <0.05 .

3. RESULTS

3.1. Hevin expression in postmortem human brains of subjects with AUD

Hevin mRNA and protein expression levels were measured in four human brain areas (PFC, HIP, CAU and CB) from 75 subjects. Individuals were divided according to their antemortem psychiatric history: AUD ($n = 25$), depression ($n = 25$) and control ($n = 25$) groups. Interestingly, in all the studied brain areas an increase in hevin mRNA was detected in the AUD group compared to the controls (PFC: 59% increase, $p = 0.0028$; HIP: 72% increase, $p = 0.0058$; CAU: 92% increase, $p = 0.0028$ and CB: 70% increase, $p = 0.0344$). No significant differences were detected between the depression and control groups (Fig. 1A-D).



221 **Figure 1. Hevin mRNA expression in postmortem human brains of alcohol use disorder (AUD)**
222 **subjects.** Relative hevin mRNA levels were quantified by RT-qPCR in postmortem brain samples
223 from subjects with AUD, depression and controls in the prefrontal cortex (PFC) (A), hippocampus
224 (HIP) (B), caudate nucleus (CAU) (C) and cerebellum (CB) (D). n = 25 per group. One-way ANOVA
225 followed by Dunnett's post-hoc test, *p < 0.05, **p < 0.01. Samples were run in triplicate. Bars show
226 mean ± SEM, dots represent the average value of each individual.

227 To further elucidate whether hevin mRNA increase paralleled an enhancement in
228 the translation process, the protein expression levels were also determined. Both previ-
229 ously described ~130 kDa and ~100 kDa hevin bands [22,31,41,42] were measured in total
230 homogenates of PFC, HIP, CAU and CB. In accordance to the alterations observed in
231 hevin mRNA, an increase in the ~130 kDa and ~100 kDa forms was detected in PFC and
232 CB of AUD subjects in comparison to controls (PFC: 25% increase in ~130 kDa band,
233 p = 0.0015 and 46% increase in ~100 kDa band, p < 0.0001; CB: 32% increase in ~130 kDa
234 band, p = 0.0344 and 38% increase in ~100 kDa band, p = 0,013) (Fig. 2A,D). In the HIP,
235 only the ~100 kDa band was significantly increased in AUD (56% increase, p = 0.00384),
236 although the ~130 kDa band showed a similar trend (Fig. 2B). In contrast, in the CAU, no
237 significant differences were observed between both groups in the expression of any of the
238 bands (Fig. 2C). No correlation was found between ethanol levels detected in the blood at
239 time of death and levels of brain hevin mRNA or protein expression. Finally, the depres-
240 sion group did not show significant differences in the levels of protein expression in
241 comparison to the control group in any brain area, as observed for the mRNA levels (Fig.
242 2A-D).

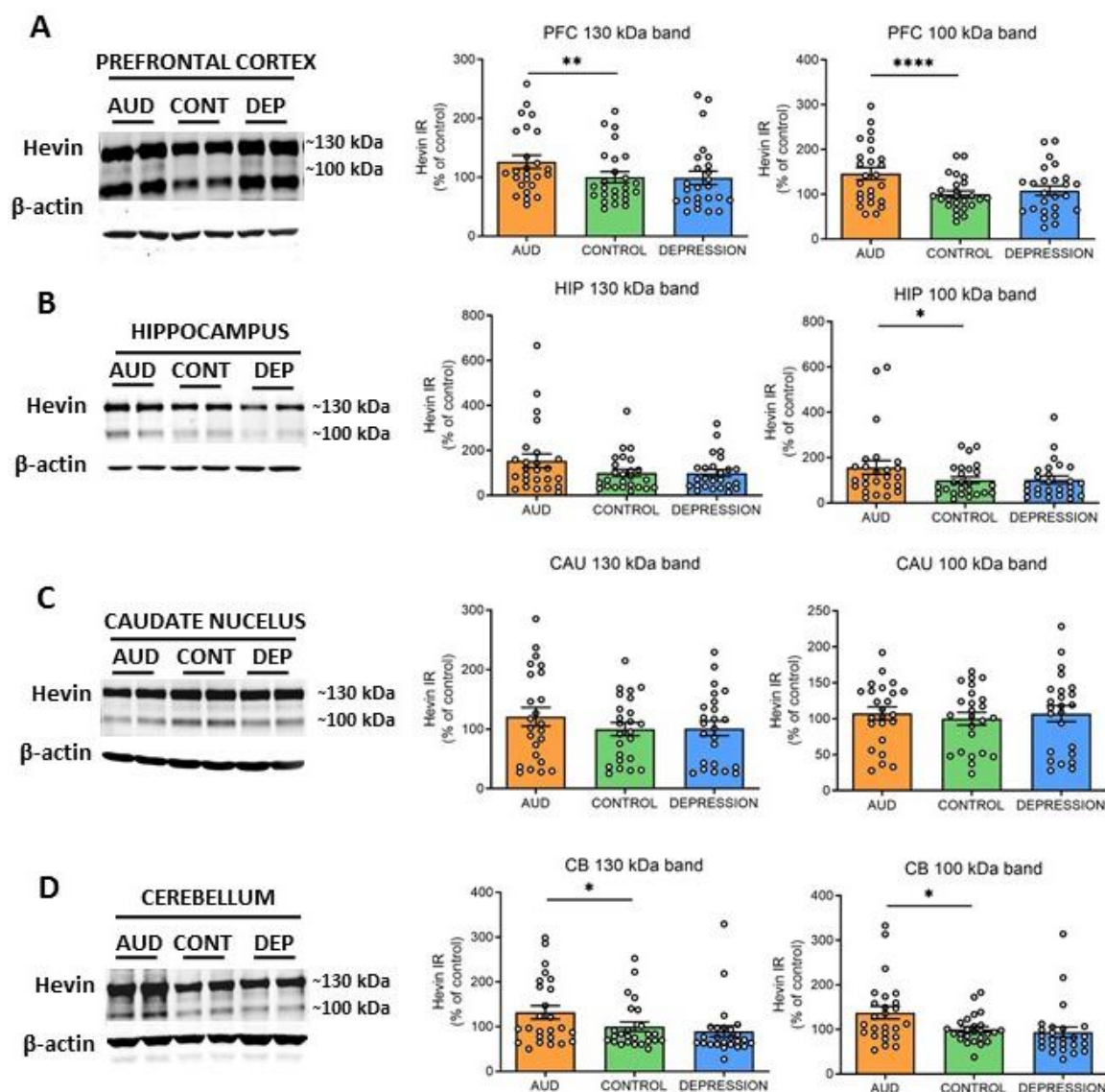


Figure 2. Protein expression of hevin in postmortem human brains of alcohol use disorder (AUD) subjects. Hevin protein expression in postmortem brain samples from subjects with AUD, depression (DEP) and controls (CONT) in the prefrontal cortex (PFC) (A), hippocampus (HIP) (B), caudate nucleus (CAU) (C) and cerebellum (CB) (D). Representative Western blot images for each brain region are shown, along with the graphics representing the actin-normalized immunoreactivity (IR) of both the ~130 kDa and ~100 kDa hevin bands. $n = 25$ per group. One-way ANOVA followed by Dunnett's post-hoc test, * $p < 0.05$, ** $p < 0.01$, **** $p < 0.0001$. Experiments were performed in triplicate. Bars show mean \pm SEM, dots represent the average value of each individual.

3.2. Hevin protein expression in mouse brain after ethanol administration

Modeling the complex facets of AUD in animals is challenging. Repeated i.p. administration of ethanol in mice induces behavioral sensitization, a model associated with relapse to drug-seeking behavior [43]. Here, hevin expression was evaluated in several mice brain regions (FC, AMY, HIP, CPu and NAc) after different ethanol regimens. To control ethanol plasma levels, mice were injected i.p. with ethanol (13 days) followed by a withdrawal period (3 days) and a challenge dose of ethanol or saline. In contrast to the human brain, mice did not express the ~100 kDa band, or its immunoreactive signal was too low to be analyzed, as described before [42,44]. Therefore, the present data corre-

243

244

245

246

247

248

249

250

251

252

253

254

255

256

257

258

259

260

261

262 spond only to the ~130 kDa band. Twenty-four h after an ethanol challenge in animals
263 injected repeatedly with ethanol, an increase in hevin protein expression was observed in
264 the NAc in comparison to the other 3 treatments (saline, one single dose of ethanol and
265 withdrawal period after repeated injections) (74% increase vs S-S, $p = 0.0041$; 68% in-
266 crease vs S-E, $p = 0.0232$, and 98% increase vs E-S, $p = 0.0007$) (Fig. 3A). Acute ethanol
267 injection reduced hevin protein levels in the AMY (54% decrease vs S-S, $p = 0.0471$ (Fig.
268 3B). No significant changes were observed in the other brain regions.

269

270

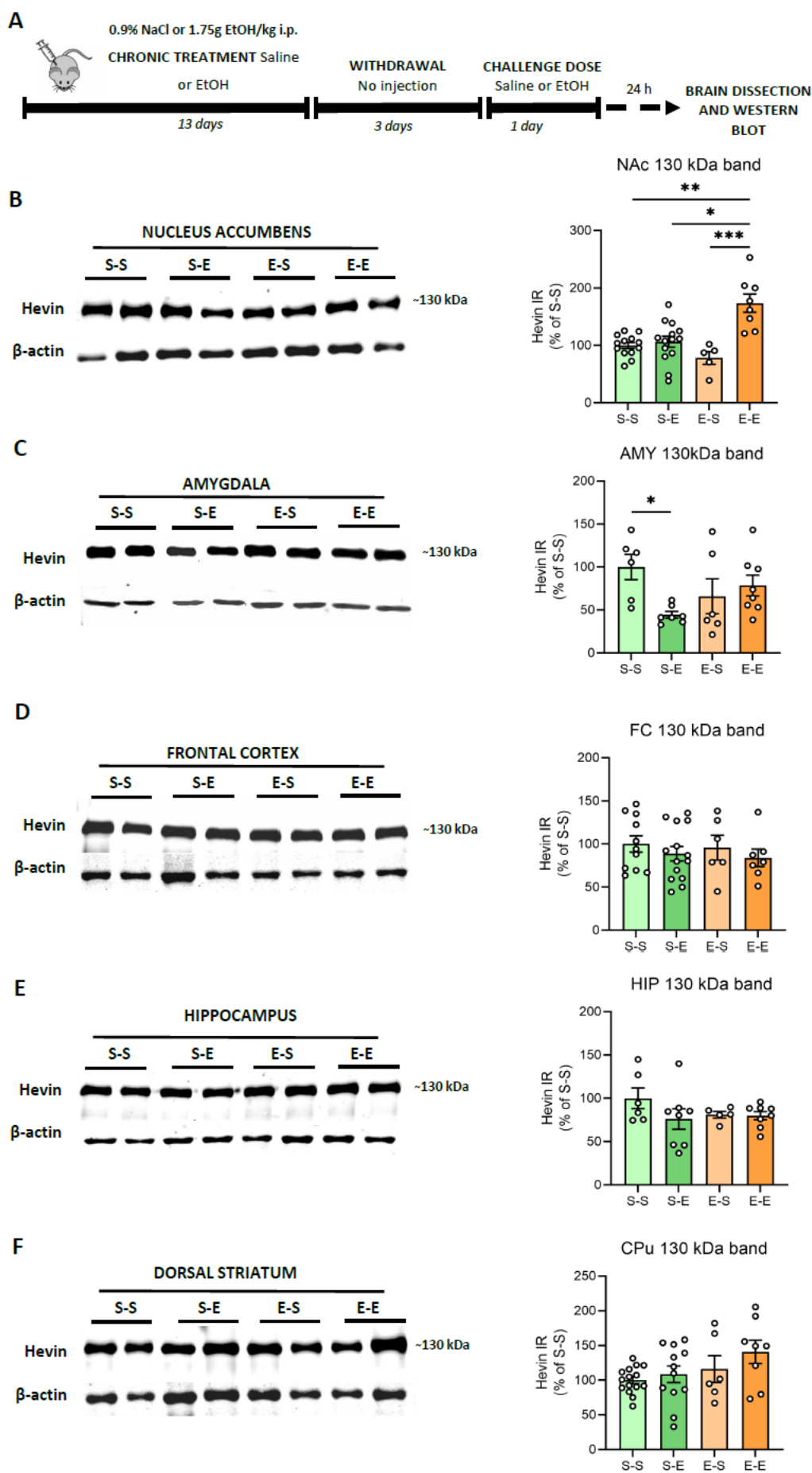


Figure 3. Hevin protein expression in the brain of mice exposed to different regimens of ethanol. A) Schematic figure showing the four ethanol treatments performed. (B-F) Representative Western blot images and the graphics representing the actin-normalized immunoreactivity (IR) of the ~130 kDa band in the four treatment groups (S-S: saline – saline, S-E: saline – ethanol, E-S: ethanol – saline and E-E: ethanol – ethanol) in the following brain regions: B) nucleus accumbens (NAc), C) amygdala (AMY), D) frontal cortex (FC), E) hippocampus (HIP), and F) dorsal striatum (CPu). n = 5-15 per group. Kruskal-Wallis followed by Dunn's post-hoc test, *p < 0.05, **p < 0.01, ***p < 0.001. Experiments were performed in triplicate. Bars show mean ± SEM, dots represent the average value of each individual.

3.3. Hevin protein expression in mouse plasma after ethanol treatment

Hevin expression levels were also analyzed in mouse plasma after chronic ethanol treatment. The ~100 kDa band was not identifiable in these samples. Ethanol challenge after withdrawal produced higher levels of the hevin ~130 kDa band in comparison to the saline challenge after withdrawal (65% increase vs E-S, p = 0.0396) (Fig. 4.). An additional band with a molecular weight around 47 kDa was also analyzed due to the high immunoreactivity signal of this band in most of the samples. Plasma showed high variability in the expression levels of the 47 kDa band among mice, with some of them expressing high levels of this form (i.e. two mice from the E-S group), and almost undetectable levels for others. As a result, no differences were detected in hevin expression levels between the ethanol treatments for the 47 kDa band (Fig. 4.). In order to assess if the expression of the lower band was the result of the cleavage of the 130 kDa band, the ratio of the immunoreactivity of both bands was also calculated (130 kDa/47 kDa). No significant differences were detected between treatment groups in the 130 kDa/47 kDa ratio (Fig. 4.).

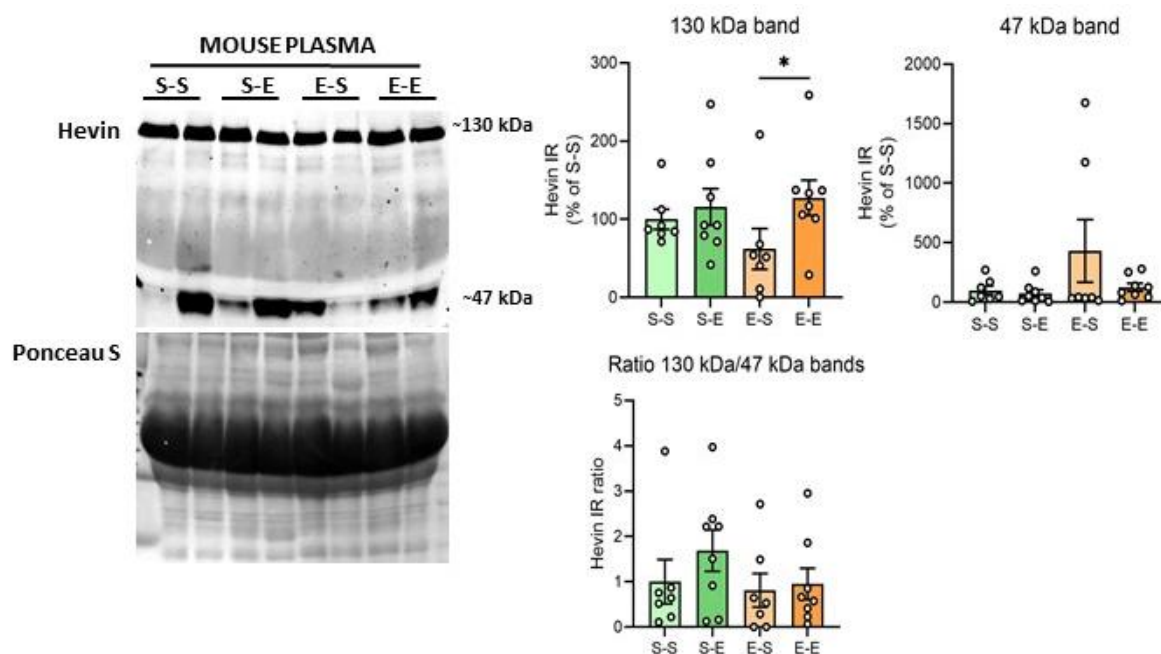


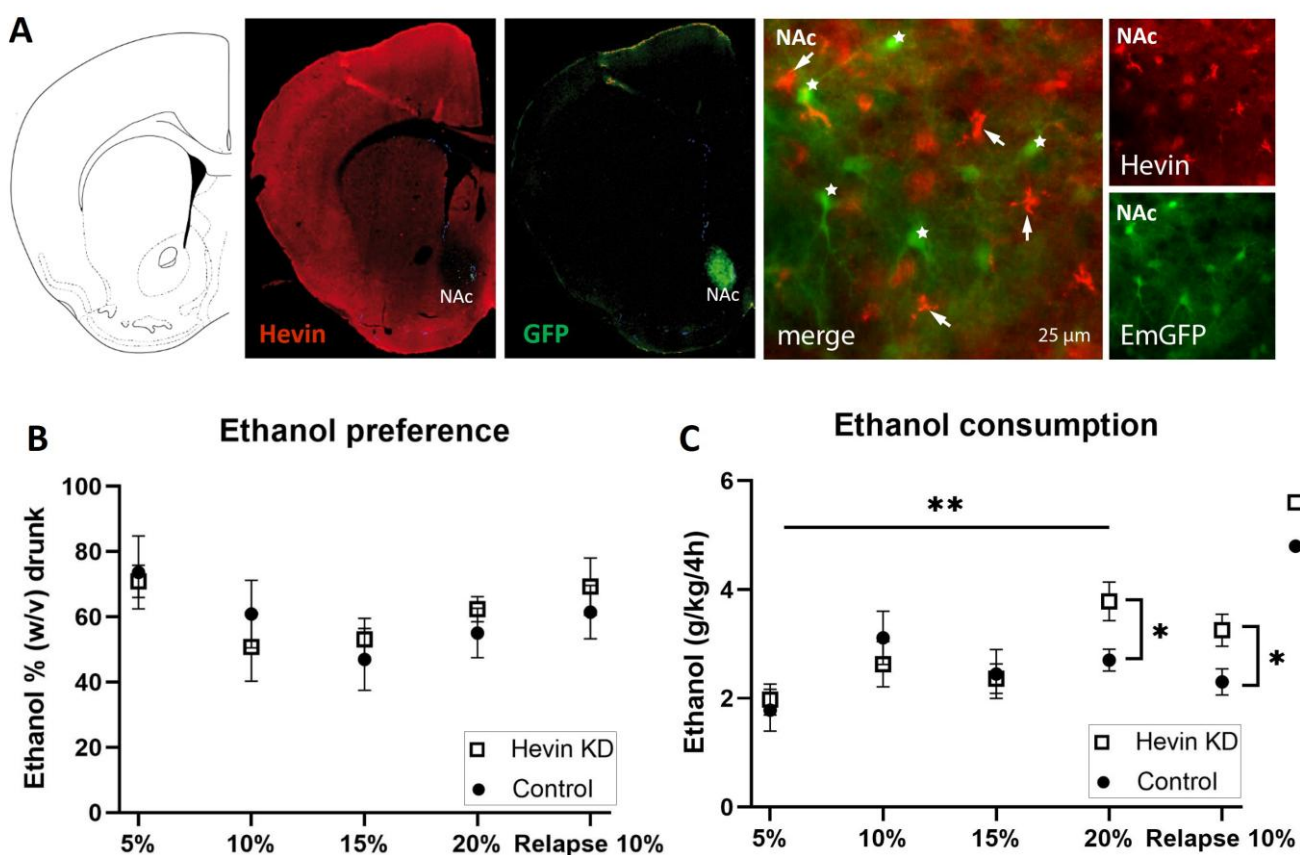
Figure 4. Hevin protein expression in mouse plasma after different regimens of ethanol. A representative Western blot of hevin in mouse plasma and its Ponceau S stain images, along with the graphics representing the actin-normalized immunoreactivity of the ~130 kDa and ~47 kDa hevin bands and the 130 kDa/47 kDa band ratio in the four treatment groups (S-S: saline – saline, S-E: saline – ethanol, E-S: ethanol – saline and E-E: ethanol – ethanol). n = 7-8 per group. Kruskal-Wallis followed by Dunn's post-hoc test, *p < 0.05. Experiments were performed in triplicate. Bars show mean ± SEM, dots represent the average value of each individual.

3.4. Behavioral consequences of hevin downregulation in NAc astrocytes on ethanol consumption

305
306
307
308
309
310
311
312
313
314
315
316
317
318
319
320
321
322
323
324
325
326
327
328

To test the role of hevin in the long-term adaptation to ethanol, we downregulated hevin expression in mouse NAc astrocytes using an RNA interference strategy, and tested the consequences of this cell-specific and regional downregulation of hevin on the consumption of ethanol in an intermittent ethanol access schedule (IEA). The downregulation of hevin in the astrocytes of the NAc was verified by immunohistochemistry of hevin protein and GFP in brain slices after the IEA schedule was completed. Immunohistochemistry assays confirmed a complete deletion of hevin expression in NAc astrocytes from mice infected with the miRNA-containing viruses (Fig. 5A).

Mice showed a high preference for the initial low dose of the ethanol solution (Fig. 5B). Preference for the ethanol bottle (calculated as the percentage of ethanol consumed from the total volume) was similar between hevin KD mice and control mice for every dose during the entire procedure (Fig. 5B). When measuring total alcohol consumption (ingested ethanol expressed as g ethanol/kg), hevin downregulation in NAc astrocytes did not affect consumption of ethanol at low and medium concentrations (5%, 10% and 15%, w/v) (Fig. 5C). However, when exposed to a higher concentration of ethanol (20%), hevin KD mice showed an increased consumption compared to the lowest dose (5%), while control animals maintained a similar intake over time (Fig. 5C). After three days of withdrawal, hevin KD mice showed a higher relapse to consuming 10% ethanol than controls (Fig. 5C). Interestingly, these effects were only observed in the first 4 h of ethanol access. The last 4 h of the IEA experiment (from 4 h to 8 h) revealed that both groups, hevin KD and control mice, drank as much water as ethanol. Altogether, these data demonstrate that hevin KD animals consume more ethanol at the highest concentration and after ethanol withdrawal, while having a similar preference for ethanol compared to control mice.



329
330
331
332

Figure 5. Effect of hevin protein downregulation in nucleus accumbens (NAc) astrocytes on ethanol consumption in mice. A) Immunohistochemical validation of hevin downregulation in NAc astrocytes after injection of miRNA-containing viruses. Hevin immunofluorescence, in red, is

absent in astrocytes infected with hevin miRNA and co-expressing EmGFP (star). Non-transfected astrocytes express hevin (arrow). B) Ethanol preference quantification every third day of each ethanol concentration. C) Ethanol consumption quantification every third day of each ethanol concentration. The ordinate represents the average of the percentage of ethanol taken by hevin KD and control groups (B) or the grams of ethanol per kg of mouse weight taken in 4 h (C). The abscissa shows the ethanol concentration tested. N = 8/group. Mann-Whitney test was used for the comparison of the preference and consumption between the hevin KD mice and controls (* $p < 0.05$, ** $p < 0.01$); and Friedman followed by Dunn's post-hoc test was used for the comparison of the preference and consumption between ethanol concentrations. Values represent mean \pm SEM.

4. DISCUSSION

AUD is characterized by two main features, the loss of control over the consumption of alcoholic beverages, and the relentless necessity to consume alcohol during abstinence, known as craving [5,6]. However, their neurobiological bases remain mainly unknown. Postmortem brain samples from subjects with a reliable antemortem diagnosis of AUD, and appropriately matched control subjects, provide a unique opportunity to search for any clinical relevance of altered molecular expression of different proteins in patients with AUD [45]. In this line, the principal finding of the present study is that the matricellular protein hevin is overexpressed in the brain of subjects with AUD.

Human brain regions analyzed in this study were selected based on their implication in different aspects of AUD and on tissue availability. The PFC was chosen for its role in executive functions, such as control, planning and inhibition of behaviors; the HIP for its important role in the association of particular environments and emotional states with the effect of the drug; the CAU, for its involvement in cognition, learning, memory, and feedback processing; and the CB, for its role in movement and balance incoordination after alcohol consumption, in addition to its role in cognition, emotion and drug addiction [8]. All the studied regions showed an increase in hevin levels either at the mRNA and/or protein levels in AUD subjects. This is the first evidence in humans for the role of hevin in the pathophysiology of AUD. Even if the mechanisms underlying this observation or its consequences are difficult to determine in humans, several hypotheses can be postulated. Hevin promotes the formation and maintenance of excitatory synapses specifically and modulates the refinement and stabilization of dendritic spines [22,24,26,46]; therefore, the upregulation of hevin expression could be implicated in the profound structural synaptic rearrangement/adaptation that occurs in AUD [47,48]. Indeed, we previously found an important loss in neuronal structural proteins in AUD subjects, and other authors have reported that AUD subjects also suffer neuronal and dendritic spine loss [48–52]. The increase in hevin could thus be an adaptative mechanism triggered to counteract the effects of ethanol on neuronal structure. Furthermore, at a molecular level, hevin increases NMDA receptor expression and function [21,24,46]. Hence, hevin could also mediate part of the synaptic plasticity occurring after chronic ethanol, such as long-term potentiation and NMDA receptor dependent plasticity, described in preclinical studies as well as in postmortem human brains from subjects with AUD [47,53–55]. In our study we did not find any difference in hevin expression levels between sexes. As a control for disease specificity, a group of subjects with antemortem diagnoses of depression was added. Hevin expression was unaltered in the depression group in our study, consistent with a previous study [56]. These results in the human brain raise the question of whether hevin overexpression is induced by ethanol or if it is a pre-AUD state, suggesting vulnerability.

We used preclinical models of AUD and compared the effects of chronic alcohol withdrawal, chronic alcohol relapse and acute alcohol administration on hevin protein levels in mouse brain. We selected cortico-limbic brain regions involved in the neurocircuitry of drug addiction, in particular ventral and dorsal striatum, PFC, HIP and AMY [8]. Because cerebellum has been classically associated to movement and balance incoordination after long-term alcohol consumption, we did not include this region in

our mouse model. In contrast to human data, we observed hevin protein expression changes only in the AMY and NAc. In the AMY, a decrease in hevin levels was observed after a single dose of ethanol, but not after chronic ethanol administration. In this context, and according to the possible role of hevin in regulating glutamatergic signaling and neuroplasticity in response to ethanol, acute and low doses of ethanol decrease excitability and increase dendritic spines in the rodent AMY, coinciding with anxiolytic effects, while repeated withdrawal normalizes dendritic arborization, causing tolerance to ethanol anxiolysis [57–59]. In contrast, in the NAc, hevin was overexpressed only with a challenging dose after withdrawal, while no change was observed after acute ethanol injection. Chronic ethanol intake and withdrawal produce alterations in the rodent NAc in dendritic spine number, structure and organization, and increase NMDA and AMPA receptor expression and function, which suggests that the increase in hevin observed in the NAc could be a compensatory response to the ethanol-related glutamatergic inhibition [60–65]. Overall, while changes in hevin levels in the AMY could be implicated in the acute alcohol experience, the increased hevin expression in the NAc after chronic ethanol exposure suggests that hevin might also participate in the long-term adaptation to ethanol. As noted, mouse and human brains showed a different pattern of hevin expression in several regions (i.e. PFC, HIP) after alcohol exposure. This difference could be explained by two essential factors largely discussed in the literature: 1) the different regimens of alcohol exposure (time course, total drug intake and probable withdrawal period) which raises the question of what is the necessary cumulative effect of ethanol to cause neuroplasticity, and 2) different psychosocial and environmental stressors [66].

To test the potential role of hevin on alcohol consumption, we used an RNA interference strategy to downregulate hevin expression in NAc astrocytes, the main cell type expressing hevin [30], and evaluated the consequences of hevin manipulation in the IEA model of voluntary ethanol intake. Our results indicate a disrupted reward system when hevin is downregulated. Specifically, we detected a higher ethanol consumption in hevin KD mice in two cases: i) at high ethanol concentrations (20%), which were administered after 15 days of intake, and ii) after three days of withdrawal with an intermediate ethanol concentration (10%). These findings suggest that ethanol addiction and withdrawal are associated with dysregulated hevin signaling. Since hevin increases excitatory synaptic plasticity, knocking-down hevin might disrupt the glutamatergic plasticity involved in the rewarding effects of ethanol [67], making it necessary to increase alcohol consumption in order to reach the same hedonic response [68]. Nevertheless, the ethanol preference analysis revealed that both hevin KD and control mice drank as much water as ethanol, showing no differences in the preference at any dose or time. We suggest that mice undergo autoregulation in the water intake probably to avoid the dehydration produced by the higher ethanol intake. Despite the inherent limitations of experimental models of psychiatric disorders, the present model contributes to a better understanding of the underlying plasticity of alcohol relapse.

Finally, we tested whether hevin levels were altered in the plasma of mice after chronic alcohol withdrawal, chronic alcohol relapse or acute alcohol administration. Interestingly, a very similar expression profile was obtained after the different ethanol treatments in plasma samples compared to the NAc, with increased hevin expression only with a challenge dose after withdrawal. The origin of hevin protein in plasma is still uncertain. Hevin is not expressed by any blood cell type [31], but is expressed in other tissues than the brain, such as lung [69], endothelial cells of high endothelial venules [27,70] and stomach [71]. The increase in hevin in the plasma of ethanol-treated mice suggests that hevin may be a component of the response involved in remodeling events associated with neuronal degeneration following neural injury, as it has been proposed in neurodegenerative diseases and several cancers [72,73]. In animal models of epilepsy, ischemia and injury, hevin is induced in reactive astrocytes, suggesting that it might participate in neuronal remodeling in pathological conditions in the adult stage [74,75].

439 As a whole, this study sheds light on the role of hevin in the pathophysiology of
440 AUD. In humans, we previously found that hevin is expressed in astrocytes and some
441 glutamatergic and GABAergic neurons [30]. The source of hevin overexpression in AUD
442 subjects is unknown. Our cell-specific RNA interference strategy in mice shows that
443 hevin expression in NAc astrocytes is crucial for increased voluntary ethanol consump-
444 tion. As described above, we hypothesize that hevin could take part in the acquisition of
445 the addiction behavior by strengthening and promoting specific synaptic signaling
446 and/or modulating neuronal plasticity/adaptation in brain areas involved in AUD.

447 In conclusion, our postmortem brain analysis revealed an increase in hevin levels in
448 various brain regions in subjects with AUD. In order to explore whether this increase was
449 a consequence of alcohol intake, we used a mouse model of chronic ethanol administra-
450 tion and found that only chronic ethanol relapse increases hevin in the brain reward
451 center, the NAc. In addition, we evaluated whether alterations in hevin expression af-
452 fected alcohol-related behavior in mice, and revealed that hevin downregulation in NAc
453 astrocytes, where the vast majority of hevin is expressed in this region, modulates alcohol
454 consumption. Overall, this study provides the first evidence for the role of hevin in al-
455cohol consumption and addiction.

456 **AUTHOR CONTRIBUTION:** AME, VV, LFC and FCC made substantial contributions to the
457 conception of the work and to the search for funding. A.N.-dM, PCB, IBM, AA, PP and RC partic-
458 ipated on the acquisition of the data. A.N.-dM and PCB performed the data analysis. A.N.-dM, PCB
459 AME, VV, LFC and FCC contributed to the interpretation of data. AME, VV, A.N.-dM and LFC
460 drafted the paper, and all the authors gave their final approval of the version to be published.

461 **FUNDING:** This work was supported by ERAB (The European Foundation for Alcohol Research,
462 EA 18 19); Centro de Investigación Biomédica en Red de Salud Mental (CIBERSAM), Spain; the
463 Basque Government (IT1512-22); Fundación Vital; and FP7 Marie Curie Actions Career Integration
464 Grant (FP7-PEOPLE- 2013-CIG #618807). A.N.-dM. is a recipient of a predoctoral fellowship from
465 the Basque Government and received an EMBO short-term fellowship.

466 **COMPETING INTERESTS:** The authors have nothing to disclose.

REFERENCES

1. Heilig M, MacKillop J, Martinez D, Rehm J, Leggio L, Vanderschuren LJMJ. Addiction as a brain disease revised: why it still matters, and the need for consilience. *Neuropsychopharmacology*. 2021; 46:1715–1723.
2. Rehm J, Mathers C, Popova S, Thavorncharoensap M, Teerawattananon Y, Patra J. Global burden of disease and injury and economic cost attributable to alcohol use and alcohol-use disorders. *Lancet*. 2009;373:2223–2233.
3. Nutt DJ, King LA, Phillips LD. Drug harms in the UK: a multicriteria decision analysis. *Lancet*. 2010;376:1558–1565.
4. WHO. World Health Organization. Global status report on alcohol and health 2018. <https://www.who.int/publications/i/item/9789241565639>. Report 27 September 2018.
5. Spanagel R, Zink M, Sommer WH. Alcohol: neurobiology of alcohol addiction. In: Pfaff DW, Volkow ND, editors. *Neurosci. 21st Century Basic Clin.*, New York, NY: Springer; 2016. p. 3593–3623.
6. Weiss F, Porrino LJ. Behavioral neurobiology of alcohol addiction: recent advances and challenges. *J Neurosci*. 2002;22:3332–3337.
7. Abrahao KP, Salinas AG, Lovinger DM. Alcohol and the brain: neuronal molecular targets, synapses, and circuits. *Neuron*. 2017;96:1223–1238.
8. Koob GF, Volkow ND. Neurobiology of addiction: a neurocircuitry analysis. *Lancet Psychiatry*. 2016;3:760–773.
9. Becker HC. Alcohol dependence, withdrawal, and relapse. *Alcohol Res Health*. 2008;31:348–361.
10. Koob GF, Le Moal M. Plasticity of reward neurocircuitry and the ‘dark side’ of drug addiction. *Nat Neurosci*. 2005;8:1442–1444.
11. Sliedrecht W, de Waart R, Witkiewitz K, Roozen HG. Alcohol use disorder relapse factors: A systematic review. *Psychiatry Res*. 2019;278:97–115.
12. Nagai J, Rajbhandari AK, Gangwani MR, Hachisuka A, Coppola G, Masmanidis SC, et al. Hyperactivity with disrupted attention by activation of an astrocyte synaptogenic cue. *Cell*. 2019;177:1280–1292.e20.
13. Wang J, Holt LM, Huang HH, Sesack SR, Nestler EJ, Dong Y. Astrocytes in cocaine addiction and beyond. *Mol Psychiatry*. 2022;27:652–668.
14. Erickson EK, DaCosta AJ, Mason SC, Blednov YA, Mayfield RD, Harris RA. Cortical astrocytes regulate ethanol consumption and intoxication in mice. *Neuropsychopharmacology*. 2021;46:500–508.
15. Bull C, Freitas KCC, Zou S, Poland RS, Syed WA, Urban DJ, et al. Rat nucleus accumbens core astrocytes modulate reward and the motivation to self-administer ethanol after abstinence. *Neuropsychopharmacology*. 2014;39:2835–2845.
16. Erickson EK, Farris SP, Blednov YA, Mayfield RD, Harris RA. Astrocyte-specific transcriptome responses to chronic ethanol consumption. *Pharmacogenomics J*. 2018;18:578–589.
17. Erickson EK, Blednov YA, Harris RA, Mayfield RD. Glial gene networks associated with alcohol dependence. *Sci Rep*. 2019;9:10949.
18. Trindade P, Hampton B, Manhães AC, Medina AE. Developmental alcohol exposure leads to a persistent change on astrocyte secretome. *J Neurochem*. 2016;137:730–743.
19. Pignataro L, Varodayan FP, Tannenholz LE, Protiva P, Harrison NL. Brief alcohol exposure alters transcription in astrocytes via the heat shock pathway. *Brain Behav*. 2013;3:114–133.
20. Christopherson KS, Ullian EM, Stokes CCA, Mullen CE, Hell JW, Agah A, et al. Thrombospondins are astrocyte-secreted proteins that promote CNS synaptogenesis. *Cell*. 2005;120:421–433.
21. Gan KJ, Südhof TC. SPARCL1 promotes excitatory but not inhibitory synapse formation and function independent of neurexins and neuroligins. *J Neurosci*. 2020;40:8088–8102.
22. Kucukdereli H, Allen NJ, Lee AT, Feng A, Ozlu MI, Conatser LM, et al. Control of excitatory CNS synaptogenesis by astrocyte-secreted proteins Hevin and SPARC. *Proc Natl Acad Sci U S A*. 2011;108:E440–449.
23. Murphy-Ullrich JE, Sage EH. Revisiting the matricellular concept. *Matrix Biol J Int Soc Matrix Biol*. 2014;37:1–14.
24. Singh SK, Stogsdill JA, Pulimood NS, Dingsdale H, Kim YH, Pilaz L-J, et al. Astrocytes assemble thalamocortical synapses by bridging Nrx1 α and NL1 via hevin. *Cell*. 2016;164:183–196.
25. Miguel-Hidalgo JJ. Molecular neuropathology of astrocytes and oligodendrocytes in alcohol use disorders. *Front Mol Neurosci*. 2018;11:78.
26. Risher WC, Patel S, Kim IH, Uezu A, Bhagat S, Wilton DK, et al. Astrocytes refine cortical connectivity at dendritic spines. *ELife*. 2014;3:e04047.
27. Girard J-P, Springer TA. Modulation of endothelial cell adhesion by hevin, an acidic protein associated with high endothelial venules. *J Biol Chem*. 1996;271:4511–4517.
28. Johnston IG, Paladino T, Gurd JW, Brown IR. Molecular cloning of SC1: a putative brain extracellular matrix glycoprotein showing partial similarity to osteonectin/BM40/SPARC. *Neuron*. 1990;4:165–176.
29. Lively S, Brown IR. The extracellular matrix protein SC1/hevin localizes to multivesicular bodies in bergmann glial fibers in the adult rat cerebellum. *Neurochem Res*. 2010;35:315–322.
30. Mongrédien R, Erdozain AM, Dumas S, Cutando L, del Moral AN, Puighermanal E, et al. Cartography of hevin-expressing cells in the adult brain reveals prominent expression in astrocytes and parvalbumin neurons. *Brain Struct Funct*. 2019;224:1219–1244.
31. Nuñez-delMoral A, Brocos-Mosquera I, Vialou V, Callado LF, Erdozain AM. Characterization of hevin (SPARCL1) immunoreactivity in postmortem human brain homogenates. *Neuroscience*. 2021; 15;467:91–109.

- 525 32. Soderling JA, Reed MJ, Corsa A, Sage EH. Cloning and expression of murine SC1, a gene product homologous to SPARC. *J*
526 *Histochem Cytochem.* 1997;45:823–835.
- 527 33. Vialou V, Robison AJ, LaPlant QC, Covington HE, Dietz DM, Ohnishi YN, et al. Δ FosB in brain reward circuits mediates resili-
528 ence to stress and antidepressant responses. *Nat Neurosci.* 2010;13:745–752.
- 529 34. Bahi A, Dreyer J-L. Involvement of nucleus accumbens dopamine D1 receptors in ethanol drinking, ethanol-induced condi-
530 tioned place preference, and ethanol-induced psychomotor sensitization in mice. *Psychopharmacology (Berl).* 2012;222:141–153.
- 531 35. Nocjar C, Middaugh LD, Tavernetti M. Ethanol consumption and place-preference conditioning in the alcohol-preferring
532 C57BL/6 mouse: relationship with motor activity patterns. *Alcohol Clin Exp Res.* 1999;23:683–692.
- 533 36. Bradford MM. A rapid and sensitive method for the quantitation of microgram quantities of protein utilizing the principle of
534 protein-dye binding. *Anal Biochem.* 1976;72:248–254.
- 535 37. Muguruza C, Miranda-Azpiazu P, Díez-Alarcia R, Morentin B, González-Maeso J, Callado LF, et al. Evaluation of 5-HT2A and
536 mGlu2/3 receptors in postmortem prefrontal cortex of subjects with major depressive disorder: Effect of antidepressant treat-
537 ment. *Neuropharmacology.* 2014;86:311–318.
- 538 38. Portero-Tresserra M, Gracia-Rubio I, Cantacorps L, Pozo OJ, Gómez-Gómez A, Pastor A, et al. Maternal separation increases
539 alcohol-drinking behaviour and reduces endocannabinoid levels in the mouse striatum and prefrontal cortex. *Eur*
540 *Neuropsychopharmacol.* 2018;28:499–512.
- 541 39. Dean B, Hyde TM, Kleinman JE. Using CNS autopsy tissue in psychiatric research: a practical guide. CRC Press; 2019.
- 542 40. Seghier ML, Price CJ. Interpreting and utilising intersubject variability in brain function. *Trends Cogn Sci.* 2018;22:517–530.
- 543 41. Brekken RA, Sullivan MM, Workman G, Bradshaw AD, Carbon J, Siadak A, et al. expression and characterization of murine
544 Hevin (SC1), a member of the SPARC family of matricellular proteins. *J Histochem Cytochem.* 2004;52:735–748.
- 545 42. Weaver MS, Workman G, Cardo-Vila M, Arap W, Pasqualini R, Sage EH. Processing of the matricellular protein hevin in mouse
546 brain is dependent on ADAMTS4. *J Biol Chem.* 2010;285:5868–5877.
- 547 43. Fish, E.W.; DeBold, J.F.; Miczek, K.A. Repeated Alcohol: Behavioral Sensitization and Alcohol-Heightened Aggression in Mice.
548 *Psychopharmacology (Berl)* **2002**, *160*, 39–48.
- 549 44. Weaver M, Workman G, Schultz CR, Lemke N, Rempel SA, Sage EH. Proteolysis of the matricellular protein hevin by matrix
550 metalloproteinase-3 produces a SPARC-like fragment (SLF) associated with neovasculature in a murine glioma model. *J Cell*
551 *Biochem.* 2011;112:3093–3102.
- 552 45. McCullumsmith RE, Hammond JH, Shan D, Meador-Woodruff JH. Postmortem brain: an underutilized substrate for studying
553 severe mental illness. *Neuropsychopharmacology.* 2014;39:65–87.
- 554 46. Gan KJ, Südhof TC. Specific factors in blood from young but not old mice directly promote synapse formation and
555 NMDA-receptor recruitment. *Proc Natl Acad Sci U S A.* 2019;116:12524–12533.
- 556 47. Avchalumov Y, Mandyam CD. Synaptic plasticity and its modulation by alcohol. *Brain Plast.* 2020;6:103–111.
- 557 48. Gass JT, Olive MF. Neurochemical and neurostructural plasticity in alcoholism. *ACS Chem Neurosci.* 2012;3:494–504.
- 558 49. Ferrer I, Fábregues I, Rairiz J, Galofré E. Decreased numbers of dendritic spines on cortical pyramidal neurons in human chronic
559 alcoholism. *Neurosci Lett.* 1986;69:115–119.
- 560 50. Erdozain AM, Morentin B, Bedford L, King E, Tooth D, Brewer C, et al. Alcohol-related brain damage in humans. *PLoS One.*
561 *2014*;9:e93586.
- 562 51. Labisso WL, Raulin A-C, Nwidu LL, Kocon A, Wayne D, Erdozain AM, et al. The Loss of α - and β -tubulin proteins are a
563 pathological hallmark of chronic alcohol consumption and natural brain ageing. *Brain Sci.* 2018;8:E175.
- 564 52. Bengochea O, Gonzalo LM. Effect of chronic alcoholism on the human hippocampus. *Histol Histopathol.* 1990;5:349–357.
- 565 53. Freund G, Anderson KJ. Glutamate receptors in the frontal cortex of alcoholics. *Alcohol Clin Exp Res.* 1996;20:1165–1172.
- 566 54. Michaelis EK, Michaelis ML, Freed WJ, Foye J. Glutamate receptor changes in brain synaptic membranes during chronic alcohol
567 intake. *Alcohol Alcohol Suppl.* 1993;2:377–381.
- 568 55. Loheswaran G, Barr MS, Zomorodi R, Rajji TK, Blumberger DM, Foll BL, et al. Impairment of Neuroplasticity in the Dorsolat-
569 eral Prefrontal Cortex by Alcohol. *Sci Rep.* 2017;7:5276.
- 570 56. Teyssier J-R, Ragot S, Chauvet-Gélinier J-C, Trojak B, Bonin B. Activation of a Δ FOSB dependent gene expression pattern in the
571 dorsolateral prefrontal cortex of patients with major depressive disorder. *J Affect Disord.* 2011;133:174–178.
- 572 57. Harrison NL, Skelly MJ, Grosserode EK, Lowes DC, Zeric T, Phister S, et al. Effects of acute alcohol on excitability in the CNS.
573 *Neuropharmacology.* 2017;122:36–45.
- 574 58. Pandey SC, Zhang H, Ugale R, Prakash A, Xu T, Misra K. Effector immediate-early gene arc in the amygdala plays a critical role
575 in alcoholism. *J Neurosci.* 2008;28:2589–2600.
- 576 59. You C, Zhang H, Sakharkar AJ, Teppen T, Pandey SC. Reversal of deficits in dendritic spines, BDNF and Arc expression in the
577 amygdala during alcohol dependence by HDAC inhibitor treatment. *Int J Neuropsychopharmacol.* 2014;17:313–322.
- 578 60. Zhou FC, Anthony B, Dunn KW, Lindquist WB, Xu ZC, Deng P. Chronic alcohol drinking alters neuronal dendritic spines in
579 the brain reward center nucleus accumbens. *Brain Res.* 2007;1134:148–161.
- 580 61. Peterson VL, McCool BA, Hamilton DA. Effects of ethanol exposure and withdrawal on dendritic morphology and spine den-
581 sity in the nucleus accumbens core and shell. *Brain Res.* 2015;1594:125–135.
- 582 62. Uys JD, McGuier NS, Gass JT, Griffin III WC, Ball LE, Mulholland PJ. Chronic intermittent ethanol exposure and withdrawal
583 leads to adaptations in nucleus accumbens core postsynaptic density proteome and dendritic spines. *Addict Biol.*
584 *2016*;21:560–574.

- 585 63. Ji X, Saha S, Kolpakova J, Guildford M, Tapper AR, Martin GE. Dopamine receptors differentially control binge alcohol drink-
586 ing-mediated synaptic plasticity of the core nucleus accumbens direct and indirect pathways. *J Neurosci.* 2017;37:5463–5474.
- 587 64. Laguesse S, Morisot N, Shin JH, Liu F, Adrover MF, Sakhai SA, et al. Prosapip1-dependent synaptic adaptations in the nucleus
588 accumbens drive alcohol intake, seeking and reward. *Neuron.* 2017;96:145–159.e8.
- 589 65. Kircher DM, Aziz HC, Mangieri RA, Morrisett RA. Ethanol experience enhances glutamatergic ventral hippocampal inputs to
590 d1 receptor-expressing medium spiny neurons in the nucleus accumbens shell. *J Neurosci.* 2019;39:2459–2469.
- 591 66. Koob GF, Volkow ND. Neurocircuitry of addiction. *Neuropsychopharmacology.* 2010;35:217–238.
- 592 67. Griffin WC, Haun HL, Hazelbaker CL, Ramachandra VS, Becker HC. Increased extracellular glutamate in the nucleus
593 accumbens promotes excessive ethanol drinking in ethanol dependent mice. *Neuropsychopharmacology.* 2014;39:707–717.
- 594 68. Cofresi RU, Bartholow BD, Piasecki TM. Evidence for incentive salience sensitization as a pathway to alcohol use disorder.
595 *Neurosci Biobehav Rev.* 2019;107:897–926.
- 596 69. Bendik I, Schraml P, Ludwig CU. Characterization of MAST9/Hevin, a SPARC-like protein, that is down-regulated in non-small
597 cell lung cancer. *Cancer Res.* 1998;58:626–629.
- 598 70. Girard J-P, Springer TA. Cloning from purified high endothelial venule cells of hevin, a close relative of the antiadhesive extra-
599 cellular matrix protein SPARC. *Immunity.* 1995;2:113–123.
- 600 71. Klingler A, Regensburger D, Tenkerian C, Britzen-Laurent N, Hartmann A, Stürzl M, et al. Species-, organ- and
601 cell-type-dependent expression of SPARCL1 in human and mouse tissues. *PLoS One.* 2020;15:e0233422.
- 602 72. Lau C-Y, Poon R-P, Cheung S-T, Yu W-C, Fan S-T. SPARC and hevin expression correlate with tumour angiogenesis in hepato-
603 cellular carcinoma. *J Pathol.* 2006;210:459–468.
- 604 73. Yin GN, Lee HW, Cho J-Y, Suk K. Neuronal pentraxin receptor in cerebrospinal fluid as a potential biomarker for neurodegen-
605 erative diseases. *Brain Res.* 2009;1265:158–170.
- 606 74. Lively, S.; Moxon-Emre, I.; Schlichter, L.C. SC1/Hevin and Reactive Gliosis after Transient Ischemic Stroke in Young and Aged
607 Rats. *J. Neuropathol. Exp. Neurol.* **2011**, *70*, 913–929.
- 608 75. Lively, S.; Brown, I.R. The Extracellular Matrix Protein SC1/Hevin Localizes to Excitatory Synapses Following Status Epilepticus
609 in the Rat Lithium-Pilocarpine Seizure Model. *J. Neurosci. Res.* **2008**, *86*, 2895–2905.

610

611

612