



HAL
open science

Notch activation shifts the fate decision of senescent progenitors toward myofibrogenesis in human adipose tissue

Nathalie Boulet, Anaïs Briot, Valentin Jargaud, David Estève, Anne Rémaury, Chloé Belles, Pénélope Viana, Jessica Fontaine, Lucie Murphy, Catherine Déon, et al.

► **To cite this version:**

Nathalie Boulet, Anaïs Briot, Valentin Jargaud, David Estève, Anne Rémaury, et al.. Notch activation shifts the fate decision of senescent progenitors toward myofibrogenesis in human adipose tissue. *Aging Cell*, 2023, pp.e13776. 10.1111/accel.13776 . inserm-03943050

HAL Id: inserm-03943050

<https://inserm.hal.science/inserm-03943050>

Submitted on 17 Jan 2023

HAL is a multi-disciplinary open access archive for the deposit and dissemination of scientific research documents, whether they are published or not. The documents may come from teaching and research institutions in France or abroad, or from public or private research centers.

L'archive ouverte pluridisciplinaire **HAL**, est destinée au dépôt et à la diffusion de documents scientifiques de niveau recherche, publiés ou non, émanant des établissements d'enseignement et de recherche français ou étrangers, des laboratoires publics ou privés.



Distributed under a Creative Commons Attribution 4.0 International License



Notch activation shifts the fate decision of senescent progenitors toward myofibrogenesis in human adipose tissue

Nathalie Boulet¹ | Anaïs Briot¹ | Valentin Jargaud¹ | David Estève¹ | Anne Rémaury² | Chloé Belles¹ | Pénélope Viana¹ | Jessica Fontaine¹ | Lucie Murphy¹ | Catherine Déon² | Marie Guillemot³ | Catherine Pech³ | Yaligara Veeranagouda² | Michel Didier² | Pauline Decaunes¹ | Etienne Mouisel⁴ | Christian Carpéné¹ | Jason S. Iacovoni⁵ | Alexia Zakaroff-Girard¹ | Jean-Louis Grolleau⁶ | Jean Galitzky¹ | Séverine Ledoux⁷ | Jean-Claude Guillemot² | Anne Bouloumié¹

¹Metabolic and Cardiovascular Research Institute, Team Dinamix, INSERM UMR1297 and Université de Toulouse, Toulouse, France

²Sanofi, Research & Development, Translational Sciences, Biochemistry Team, Chilly-Mazarin cedex, France

³Sanofi, Research & Development, Exploratory Unit, Proteomic Team, Toulouse, France

⁴Metabolic and Cardiovascular Research Institute, Team MetaDiab, INSERM UMR1297 and Université de Toulouse, Toulouse, France

⁵Metabolic and Cardiovascular Research Institute, Bioinformatic Core Facility, INSERM UMR1297 and Université de Toulouse, Toulouse, France

⁶Plastic, reconstructive and aesthetic surgery, CHU Toulouse Rangueil, Toulouse, France

⁷Center of Obesity, Explorations fonctionnelles, Louis Mourier Hospital (APHP), Université Paris Diderot, Colombes, France

Correspondence

Anne Bouloumié, Metabolic and Cardiovascular Research Institute, Team Dinamix, INSERM UMR1297 and Université de Toulouse, 31432 Toulouse cedex 4, France.

Email: anne.bouloumie@inserm.fr

Funding information

AVIESAN (Inserm/Sanofi R&D); Fondation pour la Recherche Médicale, Grant/Award Number: ARF20170938868; Institut National de la Santé et de la Recherche Médicale; Sanofi Research & Development

Abstract

Senescence is a key event in the impairment of adipose tissue (AT) function with obesity and aging but the underlying molecular and cellular players remain to be fully defined, particularly with respect to the human AT progenitors. We have found distinct profiles of senescent progenitors based on AT location between stroma from visceral versus subcutaneous AT. In addition to flow cytometry, we characterized the location differences with transcriptomic and proteomic approaches, uncovering the genes and developmental pathways that are underlying replicative senescence. We identified key components to include INBHA as well as SFRP4 and GREM1, antagonists for the WNT and BMP pathways, in the senescence-associated secretory phenotype and NOTCH3 in the senescence-associated intrinsic phenotype. Notch activation in AT progenitors inhibits adipogenesis and promotes myofibrogenesis independently of TGF β . In addition, we demonstrate that NOTCH3 is enriched in the premyofibroblast progenitor subset, which preferentially accumulates in the visceral AT of patients with an early obesity trajectory. Herein, we reveal that NOTCH3 plays a role in the balance of progenitor fate determination preferring myofibrogenesis at the expense of adipogenesis. Progenitor NOTCH3 may constitute a tool to monitor replicative senescence and to limit AT dysfunction in obesity and aging.

This is an open access article under the terms of the [Creative Commons Attribution](https://creativecommons.org/licenses/by/4.0/) License, which permits use, distribution and reproduction in any medium, provided the original work is properly cited.

© 2023 The Authors. *Aging Cell* published by Anatomical Society and John Wiley & Sons Ltd.



KEYWORDS

adipogenesis, adipose tissue, myofibroblast, NOTCH signaling, obesity, progenitors, senescence

1 | INTRODUCTION

Central obesity and aging share similarities in terms of their metabolic and inflammatory alterations, such as the accumulation of visceral fat depots, insulin resistance, chronic low-grade inflammatory state (Trim et al., 2018), and elevated risk to develop severe chronic pathologies, including type 2 diabetes and cardiovascular diseases. The fact that obesity shares features with aging led to the concept that excessive fat mass accelerates the onset of aging-related disorders (Burton & Faragher, 2018). Cellular senescence, known to be involved in both aging and age-related disorders (van Deursen, 2014), has recently also been found to play a role in obesity-associated pathologies (Palmer, Gustafson, et al., 2019). While senescent cells can be protective against cancer development (Campisi, 2013), their accumulation in metabolically active organs, such as the liver (Ogrodnik et al., 2017) and adipose tissue (AT; Minamino et al., 2009), shows negative effects with aging and obesity. Cell cycle arrest triggered by external or internal stresses including telomere shortening (Shay, 2016), DNA damage, oxidative stress, and the excess of metabolic substrates including ATP (Pini et al., 2021) through the activation of p16Ink4a- and p53-dependent pathways, together with the senescence-associated beta-galactosidase (SA- β -gal) activity, are hallmarks of AT senescent stroma-vascular cells. In addition, mature adipocytes also express a form of cell cycle-independent senescence (Ishaq et al., 2022). The causal role of senescence on impaired energy homeostasis is demonstrated by targeting senescent cells with drug-inducible “suicide” genes driven by the p16(Ink4a; Palmer, Xu, et al., 2019) or p21 (Wang et al., 2022) promoter or by senolytic drugs in obese and aged mice, strategies associated with reduction of age- and obesity-related metabolic abnormalities. Many of the detrimental effects of senescence are thought to be mediated by the senescence-associated secretory phenotype (SASP) that affects the healthy neighbor cells by promoting low-grade inflammation and fibrosis. SASP can spread senescence itself, leading to marked alterations in tissue homeostasis and function and thereby lead to systemic insulin resistance (Xu, Tchkonja, et al., 2015). Whether cell-intrinsic mechanisms are also involved in this process remains to be established.

Progenitors, identified as CD45⁻/CD34⁺/CD31⁻ stromal cells, are major contributors in the maintenance of AT homeostasis through the renewal of dysfunctional hypertrophic adipocytes and extracellular matrix. Progenitor cells are also important in the regulation of AT growth by providing additional adipocytes leading to AT hyperplasia. Progenitors constitute a heterogeneous mesenchymal stromal cell population of specialized subsets as shown by single-cell RNA sequencing approaches (Emont et al., 2022). Using single-cell flow cytometry approaches, we previously identified

tissue nonspecific alkaline phosphatase (ALPL or MSCA1) and NGFR (or CD271) as respective markers of the preadipocyte and the pre-myofibroblast in human fat depots (Esteve et al., 2019). Impaired adipogenesis has been associated with senescence in aged/obese mice and in human AT stromal cells (Le Pelletier et al., 2021; Xu, Palmer, et al., 2015). Several data are in line with an environmental impact of the SASP-derived factors including antiadipogenic Activin A (Xu, Palmer, et al., 2015) and pro-fibrotic Osteopontin (Sawaki et al., 2018). But integration of senescent environmental cues, together with progenitor intrinsic mechanisms controlling their fate, have yet to be defined. In addition, a better understanding of the molecular basis of progenitor aging is of interest to monitor and target senescence of mesenchymal stromal cells for future cell-based therapy in regenerative medicine.

The anatomical repartition of fat depots and the maintenance of AT expandability are major determinants of human metabolic health. Accumulation of visceral AT (VsAT), as observed in central obesity and with aging, is deleterious and associated with increased risk to develop cardiometabolic pathologies. In the present study, we performed flow cytometry analyses to investigate the stromal senescent state according to fat depot location using a human cohort of obese subjects and unbiased large-scale transcriptomic and proteomic approaches on human immuno-selected CD45⁻/CD34⁺/CD31⁻ AT progenitors. Our observations show that TGFbeta/BMP, WNT, and NOTCH developmental pathways are dysregulated in these senescent progenitors. GREM1 and SFRP4, endogenous antagonists to the BMP and WNT pathways, and INHBA were found to be preferentially upregulated in SASP from VsAT. Cells forced into replicative senescence upregulated intrinsic NOTCH3 receptor expression. Modulation of NOTCH activity by immobilized ligand and by gamma-secretase inhibitor demonstrates that Notch signaling is central in the pro-myofibrogenic/antiadipogenic fate triggered by replicative senescence. The link between NOTCH3 and myofibroblastogenesis is further supported by gene expression studies on both human and mouse AT and analyses of human progenitor subsets.

2 | METHODS

2.1 | Human adipose tissues

Subcutaneous human AT was obtained from healthy adult women undergoing dermolipectomy (mean body mass index 27.5 kg/m² \pm SD 3.324, mean age 41.9 years \pm SD 9.8). The protocol was approved by Ministère de la Recherche (DC2008-452). Paired subcutaneous abdominal and visceral (omental) AT was obtained from patients, candidates for bariatric surgery through a clinical study approved by the Institutional Review Boards registered at [ClinicalTr](#)



als.gov (SENAPID NCT01525472). All donors gave their informed consent.

2.2 | Cell isolation and culture

AT was digested with dispase (2.4 U/ml in PBS, pH 7.4, volume/volume, Gibco) and then type I collagenase (250 U/ml in PBS, 2% BSA, pH 7.4, volume/volume, Sigma-Aldrich) for 30 min at 37°C for the dermolipectomy, or with collagenase only for the SENADIP AT. Cell suspensions were filtered through a 250 µm filter. The stromal-vascular cells (SVC) were obtained after centrifugation and treatment with erythrocyte lysis buffer (155 mmol/L NH₄Cl; 5.7 mmol/L K₂HPO₄; 0.1 mmol/L EDTA; pH 7.3) for 10 min. Finally, matrix fragments were removed using successive filtrations through 100, 70, and 40 µm nylon meshes. The viable recovered cells were counted and further analyzed by flow cytometry or used to isolate the cell subsets by either magnetic beads-based selection or cell sorter.

The CD45⁻/CD34⁺/CD31⁻ progenitor cells were obtained from SVC by elimination of the immune and endothelial cells using CD45⁺ depletion kit (Stemcell Technologies) followed by CD31⁺ depletion (R&D Systems or Dyna, Thermofisher), followed by CD34⁺ selection kit (Stemcell Technologies) according to the manufacturer's instructions. Purity of the progenitor cells was assessed by flow cytometry.

Cells were cultured at 37°C under 21% O₂ and 5% CO₂. For adipogenic differentiation, progenitor cells were seeded at high density (120,000 cells/cm²) in ECGM-MV (Promocell) with 50 mg/ml penicillin–streptomycin for 48 h, trypsinated, and seeded in culture plates containing basal defined adipogenic medium (ECBM (Promocell) with 66 nmol/L insulin, 1 nmol/L triiodothyronine, 0.1 µg/ml transferrin, 100 nmol/L cortisol) supplemented with 3 µmol/L rosiglitazone and isobutylmethylxantine (IBMX, 0.25 mmol/L) and precoated with human recombinant NOTCH ligands: IgG1-Fc, JAG1-Fc and DLL4-F (Invitrogen) diluted in PBS and coated at 2 µg/cm² overnight at 4°C or 3 h at room temperature (RT). After 3 days, the medium was replaced by basal defined adipogenic medium for the following 7 days. At day 10, cells were either fixed in 4% PFA solution at RT for 10 min or lysed for RNA extraction. For myofibroblastic differentiation, progenitor cells were seeded at high density (120,000 cells/cm²) in ECGM-MV for 48 h, trypsinated, and seeded on coated recombinant NOTCH ligands in ECBM 1% fetal calf serum (FCS), supplemented or not with recombinant TGFβ1 (5 ng/ml, Peprotech), and treated or not with γ-secretase inhibitor LY411575 (10 µmol/L, Sigma-Aldrich) or TGFβ1 receptor inhibitor SB431542 (10 µmol/L, Sigma-Aldrich) for 4 days. At day 4, cells were either fixed with 4% PFA or lysed for RNA extraction. For serial passaging, progenitor cells were seeded at low density (5000 cells/cm²) in ECGM-MV, and then at 80% confluency, cells were trypsinated and seeded at low density for next passage, or at high density on coated ligand in ECBM 1% FCS. Immuno-selected P1 progenitor cells were treated with hydrogen peroxide (H₂O₂) 0.1 µmol/L during 24 h, then lysed for RNA extraction or by doxorubicin (0.2 µM, Sigma-Aldrich) or etoposide (1 µM, Sigma-Aldrich) for 72 h, then either lysed for

RNA extraction, or fixed with 4% PFA. For senolytic treatment, P3 and P6 progenitor cells were seeded at high density on IGG or DLL4 in ECGM-MV and treated with dasatinib (50 nM, Sigma-Aldrich) and quercetin (20 µM, Sigma-Aldrich) for 4 days then lysed for RNA extraction. For conditioned media analyses, progenitor cells (native or passaged) were seeded at high density (120,000 cells/cm²) in ECGM-MV for 24 h, followed by three washes with ECBM and incubated for 24 h within ECBM. Media were then collected and frozen at -80°C before mass spectrometry analyses. The progenitor cell subsets, that is, MSCA1⁺, -/CD271⁺ (MSCA1⁻/CD271⁺), and -/- (MSCA1⁻/CD271⁻) were isolated using a cell-sorting approach as described previously (Esteve et al., 2019) and lysed for RNA extraction or cultured under myofibroblastic condition.

2.3 | Senescence-associated β-galactosidase colorimetric staining

After fixation with 0.5% glutaraldehyde (5 min for cells and 10 min for tissue), tissue pieces or cells were incubated for the next 16 h with 4 mM K₃Fe(CN)₆, 4 mM K₄Fe(CN)₆, 2 mM MgCl₂, and 400 µg/ml X-Gal in C₃H₇NO (dimethylformamide) in PBS/MgCl₂ pH 6.0 and after washes, examined by microscopy (microscope Nikon Eclipse TE300).

2.4 | Senescence-associated β-galactosidase fluorescence staining and flow cytometry approaches

100,000 SVC were incubated with fluorescent-labeled antibodies (V500-CD45, PerCP-CD34, and V450-CD31 (BD Biosciences), PE-MSCA1, APC-CD271, and PE-Vio770-CD14 (Miltenyi Biotec)) or appropriate isotype control for 30 min at 4°C in PBS 0.5% BSA and 2 mmol/L EDTA. Cells were washed with PBS and analyzed using a FACS Canto™ II flow cytometer. Beta-galactosidase activity was performed using ImaGene Green C₁₂FDG lacZ Gene Expression Kit (Molecular Probes). 250,000 cells in ECBM 0.1% BSA without phenol red, pretreated with chloroquine (30 µmol/L) for 1 h at 37°C under 5% CO₂, were further incubated for the next 3 h with 33 µmol/L FITC C₁₂FDG. After washing steps, antibodies or appropriate isotype control were added (PerCP-CD34, PE-Vio770-CD14, V450-CD31, and BV510-CD45) for 20 min at 4°C. Cells were washed with PBS and analyzed using a FACS Canto™ II flow cytometer. Analyses were performed with Diva Pro software (BD Biosciences) or FlowJo (BD Biosciences).

2.5 | Scratch wound assay

p96 plate (Incucyte® Imagelock 96-well plate, Sartorius, France) was coated overnight at 4°C with IgG and DLL4. Immuno-selected progenitor cells were plated in ECGM-MV at 30–40,000 cells/well on IgG/DLL4-coated wells in the presence or not of 10 µmol/L of LY411575



or of 10 $\mu\text{mol/L}$ of SB431542 or on uncoated wells, and left overnight. Scratch wound was performed according to the manufacturer's instructions using the 96-well WoundMaker (Incucyte, Sartorius). After PBS washes, media were changed to ECBM 1% FCS in the presence or not of LY411575 (10 $\mu\text{mol/L}$), or in the presence of TGF β 1 (5 ng/ml), or SB431542 (10 $\mu\text{mol/L}$) and recorded every 3 h using the Incucyte SX5 during 72 h. Wound closure was analyzed using the Incucyte Scratch Wound Analysis Software Module (Sartorius, France).

2.6 | Isolation of SVC from mouse AT

Four-month-old male C3H/HeOJ mice (Charles River Laboratories France) were fed a 45% high-fat diet (45% energy as fat, Research Diets D12451) up to 6 weeks. Mice were housed in accordance with French and European Animal Care Facility guidelines at 21 °C with food and water provided ad libitum, and maintained on a 12-h light, 12-h dark cycle. Mice were euthanized after an overnight fasting. Perigonadal AT was excised and directly digested as described previously (Vila et al., 2014). SVC were lysed in QIAzol (Qiagen) for RNA extraction.

2.7 | Immunofluorescence staining

Fixed cells were blocked and permeabilized in PBS 0.1% Triton X-100 and 5% serum for 30 min at RT and then incubated overnight at 4°C with primary antibodies (mouse anti- α SMA, Dako 1A4, 1:100; rabbit anti-NOTCH3, Abcam ab23426, 1:200, mouse anti- γ H2AX, EMD Millipore JBW301, 1:200). After washing steps, cells were incubated for 1 h at RT with appropriate Alexa Fluor-conjugated secondary antibodies (Invitrogen). Nuclei were stained with DAPI (0.5 $\mu\text{g/ml}$, Invitrogen), and lipid accumulation was visualized with BODIPY 493/503 staining (10 $\mu\text{g/ml}$, Invitrogen) for 15 min at RT. Images were taken with a fluorescent (Nikon Eclipse TE300, software NIS-Elements 2.5 BR, Nikon®) or confocal microscope (ZEISS LSM780, ZEN software). Image analysis was performed with ImageJ software. Nuclei were counted from the DAPI staining, and the results were the mean of 5 images for each sample.

2.8 | Western blot analysis

Cells were lysed with RIPA buffer supplemented with antiproteases, and 2.5 μg of protein extract quantified by DC protein assay (Bio-Rad) was used for the western approach. Primary antibodies rabbit anti-NOTCH3 (Abcam ab23426, 1:1000), mouse anti- β -tubulin (Cell Signaling D3U1W, 1:1000, as loading control) were incubated overnight at 4°C in TBS buffer with 5% BSA or 5% milk. Detection was performed with an appropriate HRP-coupled secondary antibody (Cell Signaling Technology) incubated for 1 h at RT and ECL reagent (Amersham). Densitometry was quantified using Chemidoc detection system (Bio-Rad laboratories).

2.9 | Transcriptional analysis

Total RNA was isolated from human cells using Quick-RNA Microprep kit (Zymo Research) or from murine SVC using Direct-zol RNA Miniprep Plus kit (Zymo Research) according to the manufacturer's instructions. cDNA synthesis was performed on 100–200 ng of total RNAs with Superscript III (ThermoFisher) and random hexamer primers. Relative gene expression levels were assessed using Taqman® Probes and TaqMan Fast Advanced Applied mastermix (ThermoFisher) on a QuantStudio™ 5 (QS5; ThermoFisher). Human and murine Assay-On-Demand are listed in Table S1. Each of the samples was run in duplicate, and the relative amount was normalized to 18S or PPIB housekeeping gene. Data were analyzed using QuantStudio Real-Time PCR software (ThermoFisher).

2.10 | Label-free quantitative mass spectrometry

Adsorption of proteins on the surface of Nanozeolite LTL (NanoScape AG, Germany) was carried out for 90 min at 4°C by incubation of 0.1 mg protein/ml conditioned media and 0.1 mg/ml nanoparticles in 50 mmol/L ammonium bicarbonate buffer, pH 8.0 (ABF). After centrifugation at 16,000g for 20 min and washes in ABF, captured proteins were suspended in 100 μl of ABF containing 0.05% AALS (Anionic Acid Labile Surfactants from Protea Biosciences). After reduction (10 mM DTT at 56°C for 30 min) and alkylation (20 mmol/L iodoacetamide for 30 min at RT in dark), bound proteins were digested with LysC (0.5 μg) for 4 h at 37°C followed by trypsin (1 μg) for 18 h at 37°C. After centrifugation, protein digests are collected and AALS hydrolyzed with 1% TFA at 37°C for 45 min. For LC-MSMS analysis of the native Sc and Vs progenitor cell secretome, Ultimate 3500 RSLC dual system (Thermo Scientific) coupled to hybrid LTQ Orbitrap Elite mass spectrometer (Thermo Scientific) equipped with a nanoelectrospray source was used. Tryptic digests were loaded onto a C18 trap column (Thermo Scientific) and washed with 0.2% HCOOH at 5 $\mu\text{l/min}$ for 10 min. Peptides were eluted on a C18 reverse-phase column (Thermo Scientific) with a linear gradient of 4%–30% solvent B ($\text{H}_2\text{O}/\text{CH}_3\text{CN}/\text{HCOOH}$, 10/90/0.2 volumes) for 120 min, 30%–90% solvent B for 20 min, and 90% solvent B for 5 min, at a flow rate of 250 nl/min. The mass spectrometer was operated in the data-dependent mode to automatically switch between MS and MS/MS acquisition. Survey full-scan MS spectra (m/z 310–1600) were acquired in the Orbitrap with a resolution of 120,000 at m/z 400. For serial passaging secretome, the nanoAcquity UPLC (Waters) coupled to a Q Exactive Plus mass spectrometer (Thermo Scientific) equipped with a nanoelectrospray source was used. Protein digests were loaded onto a nanoAcquity UPLC Trap column (Waters) and washed with 0.2% formic acid at 20 $\mu\text{l/min}$ for 3 min. Peptides were then eluted on a C₁₈ reverse-phase nanoAcquity column (Waters) with a linear gradient of 8–31% solvent B ($\text{H}_2\text{O}/\text{CH}_3\text{CN}/\text{HCOOH}$, 10/90/0.2, by vol.) for 120 min, 31–91% solvent B for 20 min, and 91% solvent B for 5 min, at a flow rate of 250 nl/min. The mass spectrometer was operated in the data-dependent mode



to automatically switch between MS and MS/MS acquisition. Survey full-scan MS spectra (from m/z 325–1300) were acquired with a resolution of 70,000 at m/z 200. MSMS spectra were recorded in profile type with a resolution of 17'500. All samples were injected in triplicate. The LC-MS/MS data, acquired using the Xcalibur software (Thermo Fisher Scientific), were processed using a homemade Visual Basic program software developed using XRawfile libraries (Thermo Fisher Scientific) to generate an MS/MS peak list used for database searching and a file used for quantitative analysis. Database searches were performed using internal MASCOT server (Matrix Science) using the Swiss-Prot human database. Mascot results were imported into Scaffold software (version 4.4.1.1) and also used for XTandem parallel Database Search. Peptide identifications were accepted if they could be established at greater than 7.0% probability to achieve an FDR less than 1.0% by the Scaffold Local FDR algorithm. Protein identifications were accepted if they could be established at greater than 97.0% probability to achieve an FDR less than 1.0% and contained at least 2 identified peptides. Quantitative differential analysis of proteins was realized using a label-free analysis with an in-house DIFFTAL (DIFFerential Fourier Transform Analysis) software algorithm as described previously (Autelitano et al., 2014). Statistical analyses were realized with DanteR program, an R-based software. The peptides quantification was normalized by the median intensity value of the detected feature population over the 102 runs, which includes 34 conditions (17 patients \times 2 AT depots) and over the 36 runs, which includes 12 conditions (3 patients \times 4 levels of serial passaging), in triplicate injections. Only peptides detected at least 2 times (over replicates) are kept, and an average intensity value per sample is calculated for each peptide. A threshold value representing the minimum detectable signal level is used. The protein abundance is determined as the average of the top three most abundant peptides per protein.

2.11 | Ampliseq RNA sequencing

RNA was isolated using RNeasy Protect Mini kit (Qiagen) and suspended in RNAProtect cell reagent. RNA quality was assessed with Agilent RNA 6000 Pico Kit (Agilent) and quantified using Qubit™ RNA HS Assay Kit (Invitrogen) and Qubit 2 Fluorometer (Invitrogen). 10 ng of RNA was used for AmpliSeq transcriptome library construction. For AmpliSeq transcriptome sequencing library construction AmpliSeq™ Library PLUS, AmpliSeq Transcriptome Human Gene Expression Panel and AmpliSeq CD indexes SetA kits were purchased from Illumina and sequencing libraries were constructed as described in AmpliSeq for Illumina Transcriptome Human Gene Expression Panel reference guide (Illumina). Sequencing libraries were quantified using Qubit dsDNA HS Assay Kit and Fluorometer (Invitrogen) and converted to molar concentration using 285-bp peak. Equimolar concentrations of libraries were pooled at 4 nmol/L and used for sequencing. Pooled library was denatured and diluted as described in Denature and Dilute Libraries Guide (Illumina) and adjusted to final concentration of 1.4 pmol/L. Resulting library was

sequenced on NextSeq 500 using NextSeq 500/550 High Output v2 kit with 2×151 bp cycle. Generated raw files were converted to FASTQ files and used for data analysis. AmpliSeq transcriptome FASTQ files were analyzed on Array studio V10.0 (Omicsoft, Qiagen). Following raw read QC, first and last 10 bases were trimmed and mapped to reference genome Human B38. The read count data were generated using GeneModel RefGene20170606. Resulting data were normalized by DESeq package, transformed to log2 value, and used for statistical analysis using NetworkAnalyst (Zhou et al., 2019).

2.12 | Statistical analyses

Statistical analyses were performed using Prism (GraphPad Software). Comparisons between 2 groups were analyzed either paired or unpaired analysis and two-tailed Student's *t* test or Wilcoxon test depending on data distribution. Comparison between more than 2 groups was analyzed by either one-way ANOVA or two-way ANOVA or nonparametric Kruskal–Wallis test, followed by Dunn's, Dunnett's, Tukey's, or Sidak's multiple comparison test for (*n*) independent experiments. Differences were considered statistically significant when $p < 0.05$.

3 | RESULTS

3.1 | Fat depot location from obese patients impacts senescence of progenitors

Cellular senescence in both ScAT and VsAT from obese patients was first assessed through colorimetric staining of senescence-associated beta-galactosidase (SA- β -gal) activity. As shown in [Figure 1a](#), SA- β -gal staining showed interindividual and interdepot heterogeneity, exhibiting a range of distinct qualitative profiles, from a diffuse low-level staining in ScAT biopsies to much higher staining in VsAT (left panel), with positive cells widely distributed in the stroma-vascular compartment or concentrated in crown-like structures surrounding adipocytes (right panel, top and bottom, respectively). Although some mature adipocytes exhibited light SA- β -Gal staining, more intense SA- β -Gal staining was found in stromal cells. To further identify and quantify SA- β -gal-positive stromal cells in human AT, stroma-vascular cells obtained after collagenase digestion of both ScAT and VsAT from 115 obese subjects were stained for fluorescent SA- β -gal activity in combination with cell surface markers (CD45, CD14, CD34, and CD31) and analyzed by flow cytometry. Unsupervised tSNE (t-distributed stochastic neighbor embedding) performed after downsampling and concatenation of ScAT and VsAT data from a panel of 55 donors highlighted macrophage, lymphocyte, endothelial cell and progenitor cell clusters based on cell surface marker expression ([Figure S1a](#), left panel). SA- β -gal+ cells were identified in macrophages, endothelial cells, and progenitor cells ([Figure 1b](#) right panel). Within



FIGURE 1 Senescence in progenitor cells defines a fat depot-specific pattern in obesity. (a) Colorimetric SA- β -gal staining on paired biopsies of subcutaneous and visceral adipose tissue (ScAT and VsAT). Representative views of whole AT pieces and light microscope images are shown. (b) Paired ScAT and VsAT stroma-vascular (SVF) cells from 55 subjects were analyzed by flow cytometry. tSNE of data after downsampling and concatenation enabled the identification of clusters by cell type: purple macrophages (CD45⁺/CD34⁻/CD31^{int}/highFSC/HighSSC), red endothelial cells (CD45⁻/CD34⁺/CD31⁺/HighFSC/HighSSC), green progenitor cells (CD45⁻/CD34⁺/CD31⁻/HighFSC/HighSSC), and blue lymphocytes (CD45⁺/CD34⁻/CD31⁻/lowFSC/LowSSC; left panel) and same tSNE colored by SA- β -gal fluorescence intensity (right panel). (c) Pie charts showing the percentage of cell types within the SA- β -gal-positive cells in ScAT and VsAT. (d) Supervised analysis of the SA- β -gal⁺ cells, histograms represent means \pm sem of SA- β -gal⁺ cells per gram of tissue for progenitor cells (left) and macrophages (right) from ScAT (blue) and VsAT (red; $n = 115$ donors, two-way ANOVA, Tukey's post-test). (e) Principal component analyses performed on clinical and anthropometrical parameters of obese AT donors and ScAT (upper panel, blue) and VsAT (lower panel, red) progenitor senescence variables. (f) Immuno-selected progenitor cells from paired ScAT and VsAT biopsies of 17 obese subjects were maintained for 24 h in basal medium, and the conditioned media were harvested and analyzed by mass spectrometry. Heatmap of most relevant differentially expressed proteins from the 17 secretomes of ScAT (blue) and VsAT (red) progenitors (deep blue corresponding to the smallest value and yellow to the highest value)

the total SA- β -gal⁺ stromal cells, VsAT had higher percentage of progenitors and lower of macrophages than ScAT (Figure 1c). Per tissue mass, VsAT contained a higher number of SA- β -gal⁺ senescent progenitors when compared to ScAT, with no corresponding difference in the number of senescent macrophages (Figure 1d). In the progenitor cluster, back-gating on the fat depot origin revealed higher SA- β -gal activity together with larger cell size in VsAT compared with ScAT (Figure S1b–d). Principal component analysis using clinical and anthropometric variables in addition to ScAT and VsAT progenitor senescence variables was performed (Figure 1e). Component 1 clearly separated two groups of variables. One group was constituted by the variables relative to progenitor senescence and BMI (at the age of 20, actual and maximal BMI). The other group was composed of parameters related to metabolic syndrome (MS) including age, waist-to-hip ratio (WHR), insulin resistance (HbA1c and HOMA-IR), triglycerides, and systolic blood pressure (SBP). HDL was clearly discriminated by component 2 and, as expected, was inversely correlated with the MS-related variables. Interestingly, the associations between BMI and senescent parameters were clearly more marked and statistically relevant in VsAT compared with ScAT (Figure 1e).

Analysis of the secretome of native immuno-selected ScAT and VsAT progenitor cells from 17 patients by large-scale mass spectrometry identified 428 secreted proteins. Paired analysis of ScAT and VsAT progenitor secretomes highlighted 161 differentially expressed proteins (DEPs) upregulated in VsAT progenitors and 65 in ScAT progenitors; the DEPs with the highest fold changes are shown in Figure 1f. Comparison of ScAT and VsAT DEPs with the freely available secretome database, the SASP atlas (Basisty et al., 2020), the SenMayo geneset (Saul et al., 2022) and factors identified in human AT senescent progenitors (Xu, Palmer, et al., 2015; Xu, Tchkonja, et al., 2015) were performed. VsAT progenitor secretome was mainly enriched in common canonical SASP factors including IGFBP7, IL6, and CXCL8 (cellular senescence-enriched reactome pathway), the CXCR2 Ligands (CXCL1, CXCL2, CXCL3, and CXCL8), as well as inflammatory, growth, and remodeling factors (MIF, FGF7, and INHBA) and factors of the complement and coagulation pathways (PLAT, PLAU, SERPINB2, E2 and E1, and TF; Table 1).

3.2 | The BMP, WNT, and NOTCH developmental pathways are markers of the senescence-associated secretory and intrinsic phenotypes of progenitors

To investigate whether the VsAT progenitor senescence could be in part related to replicative growth pressure promoted by obesity, AT progenitors from nonobese individuals were submitted to serial passaging with low-density cell seeding. Due to the low amount of VsAT biopsies retrieved from nonobese individuals precluding immunoselection approaches, progenitors were immuno-selected from ScAT. A marked increase in the number of SA- β -gal⁺ progenitor cells was observed as early as P3 in both nonconfluent and confluent cells (Figure 2a). In addition, increases in cell size and doubling time and in the expression levels of *CDKN2A* (p16) and *CCND1* (Cyclin D1) were observed while *CDKN1A* levels (p21) were not altered (Figure 2b). Paired analysis of the DEPs between P3 and P6 secretomes with the one of nonsenescent P1 progenitor cells identified 34 proteins upregulated either in P3 or P6 secretomes (Figure 2c) among the 342 identified secretory factors. In parallel, the comparative paired analysis of the RNA sequencing data of P6 and P1 progenitors highlighted 518 DEGs upregulated at P6 (Figure 2d). The P6 DEGs were enriched in pathways related to tissue remodeling including epithelial-to-mesenchymal transition (EMT), TGF β signaling, and hypoxia as well as inflammation. Interestingly, the Notch signaling including NOTCH3 was also part of the AT progenitors senescent transcriptome (Figure 2e). Merging of the P6 DEGs and P3P6 DEPs with the native ScAT and VsAT progenitor-specific secretomes from obese patients (from Figure 1f) highlighted a marked enrichment in senescence-related proteins in VsAT compared with ScAT secretomes (21 proteins vs. 4, respectively; Figure 2f). Among the 21 VsAT SASP factors, 16 proteins were common with other SASP (Table 1). The remaining 5 proteins were specific of the AT progenitor replicative SASP and enriched in complement and coagulation pathways (C7 and C4B) as well as in TGF β /BMP and Wnt/ β -catenin signaling, as GREM1 and SFRP4 are both secreted antagonists of BMP and WNT, respectively, and in adipogenesis-related pathways (SFRP4 and LIF). RTqPCR analysis further confirmed the upregulation of *GREM1*, *SFRP4*, and *LIF* as well as *INHBA* with AT progenitor replicative senescence (Figure 1g).



TABLE 1 Differentially expressed proteins in ScAT and VsAT secretomes, SASP atlas, SenMayo gene set and media from irradiated human preadipocytes

Gene Id	p Value	Ratio	SASP Atlas				SenMayo	Irradiated preadipocytes
			Irradiated fibroblasts	Protease inhibitor fibroblasts	Inducible RAS Fibroblast	Irradiated epithelial cells		
ACE	0.001953	0.65						
ADAMTS1	0.000427	57.57						
ADAMTS5	0.03125	0.82						
AEBP1	0.044769	0.88						
AGRN	0.03125	29.43	+	+	+			
ALB	0.003845	1.96	+		+			
ANXA2	0.001678	0.81		+	+	+		
APCS	0.012207	1.75						
APLP2	0.005569	2.25						
APOA1	0.00293	55.76			+			
APOC3	0.009766	1.60			+			
APOD	0.000153	0.52						
ARPC1A	0.03418	22.82						
B4GALT1	0.028992	1.39		+				
BGN	0.003159	1.76		+	+			
C1QBP	0.000381	25.15						
C4A	0.007813	2.19						
C4B	0.003906	4.58						
C7	0.000031	65.24						
CAB39L	0.000488	0.44						
CALR	0.000015	1.96	+	+	+			
CCDC80	0.00029	2.35						
CD59	0.006653	1.28			+			
CFD	0.000107	0.44						
CFH	0.000031	0.39		+				
CFI	0.000488	230.90			+			
CHI3L1	0.000122	294.27						
CHID1	0.002441	20.90						
CILP	0.002441	0.60						
CLEC3B	0.000031	0.25		+	+			
CMA1	0.04187	37.97						
COL12A1	0.000031	0.50	+	+	+			
COL14A1	0.003906	0.60						
COL18A1	0.010742	23.76		+				
COL1A1	0.000381	0.65		+				
COL1A2	0.003845	0.71		+				
COL3A1	0.000107	0.48		+				
COL5A2	0.028992	0.91			+			
COL6A1	0.00029	0.61	+	+	+			
COL6A2	0.000153	0.59	+	+	+			
COL6A3	0.000153	0.45	+	+	+			



TABLE 1 (Continued)

Gene Id	p Value	Ratio	SASP Atlas				SenMayo	Irradiated preadipocytes
			Irradiated fibroblasts	Protease inhibitor fibroblasts	Inducible RAS Fibroblast	Irradiated epithelial cells		
CPA3	0.010986	0.80						
CREG1	0.00029	1.92						
CTHRC1	0.006836	0.67	+		+			
CXCL1	0.003845	6.44	+	+	+	+	+	
CXCL2	0.027344	1.83	+	+	+	+		
CXCL3	0.008545	3.07	+	+	+			
CXCL6	0.000092	735.04				+		
CXCL8	0.000854	3.11	+		+	+	+	
CYR61	0.038635	233.45		+	+			
DCN	0.001343	0.60		+			+	
ECM1	0.000031	0.44	+	+	+			
EMILIN2	0.000076	2.12						
ENPP2	0.000488	0.39		+				
F2	0.000061	195.33			+			
F5	0.000214	32.05		+				
FAM114A1	0.03125	0.85						
FBLN1	0.000381	0.50		+	+			
FBLN2	0.000381	0.59		+				
FBN1	0.000504	0.59		+	+			
FGF7	0.001953	2.01				+		
FGG	0.03125	1.44						
FN1	0.020157	0.79	+	+	+			
FST	0.000092	0.41						
FSTL1	0.001343	0.67		+				
GALNT2	0.037109	48.98	+					
GC	0.003906	53.89	+		+			
GGH	0.020996	0.87						
GNAS	0.005157	1.29						
GREM1	0.000977	324.39						
GSN	0.000015	0.37	+	+	+	+		
HMCN1	0.013672	0.75						
HP	0.010986	1.83						
HPX	0.001678	48.49						
IGF2	0.000061	2.42		+	+			
IGFBP3	0.000015	24.82	+	+		+	+	
IGFBP4	0.000504	2.79	+	+	+	+		
IGFBP7	0.000031	2.54	+	+		+		
IGHG1	0.000214	85.05						
IGHG3	0.023438	22.28						
IGHG4	0.015625	54.44						
IGKC	0.006653	1.96						
IL6	0.000732	93.41				+	+	

(Continues)



TABLE 1 (Continued)

Gene Id	p Value	Ratio	SASP Atlas				SenMayo	Irradiated preadipocytes
			Irradiated fibroblasts	Protease inhibitor fibroblasts	Inducible RAS Fibroblast	Irradiated epithelial cells		
INHBA	0.000031	338.34					+	+
ISLR	0.023438	0.83						
ITGBL1	0.000977	0.37						
ITIH4	0.020996	19.22						
ITLN1	0.000244	1087.89						
KRT85	0.027344	510.83						
LAMB1	0.000656	1.65	+	+	+			
LAMB2	0.000381	0.63		+	+			+
LBP	0.03125	330.45						
LGALS1	0.000656	0.74	+	+	+			
LGALS3	0.000015	0.54	+	+				+
LGALS3BP	0.039536	1.47	+	+	+			
LIF	0.000122	402.14						
LOX	0.003357	58.52		+				
LOXL2	0.023438	0.84	+	+	+			
LTBP2	0.001007	1.78			+			
LTBP4	0.047913	28.77			+			
MASP1	0.007813	0.58		+				
METRNL	0.024414	0.87						
MFAP5	0.015625	0.69						
MIF	0.000046	1.69	+	+	+		+	
MMP10	0.001678	0.56					+	
MMP14	0.029541	1.98			+		+	
MMP3	0.000015	0.18			+		+	+
MMP9	0.003159	45.56			+		+	
MSLN	0.03125	249.28						
MYDGF	0.003357	1.48	+		+			
NAMPT	0.014999	0.81	+		+			
NID2	0.005859	1.69	+		+			
NRP2	0.001953	147.98						
OGN	0.000122	2.59						
PAM	0.044312	0.90						
PAMR1	0.01825	1.75						
PAPPA	0.000031	2.51					+	
PCOLCE	0.007904	0.74		+	+			
PCOLCE2	0.000153	0.57						
PDGFRL	0.002441	0.69						
PI3	0.044769	0.97						
PLAT	0.000031	972.35			+		+	
PLAU	0.000031	176.63	+		+		+	
PLG	0.013672	51.15		+				
PLXDC2	0.027344	41.60						



TABLE 1 (Continued)

Gene Id	p Value	Ratio	SASP Atlas				SenMayo	Irradiated preadipocytes
			Irradiated fibroblasts	Protease inhibitor fibroblasts	Inducible RAS Fibroblast	Irradiated epithelial cells		
POSTN	0.000015	0.24	+	+	+			
PRG4	0.00209	0.64						
PSAP	0.026672	1.32	+	+	+			
PTGDS	0.001068	268.45						
PXDN	0.047913	1.30	+	+	+			
QSOX1	0.001678	1.39	+	+	+			
RNASE4	0.024414	0.79		+	+			
S100A13	0.000031	0.52						
SDC4	0.001678	1.74						
SEPT8	0.039795	1.27						
SERPINB2	0.000107	2.75			+			
SERPINC1	0.001068	125.93						
SERPINE1	0.000015	3.30	+	+	+	+		
SERPINE2	0.000504	2.39		+		+		
SERPINF1	0.000031	0.43		+	+			
SERPING1	0.030518	0.82		+				
SFRP2	0.038635	2.02						
SFRP4	0.047913	83.82						
SLIT2	0.007813	0.72						
SLPI	0.010254	70.58						
SOD3	0.000015	0.25		+				
SPON1	0.01825	2.53					+	
STC2	0.006714	1.84					+	
TF	0.002136	34.82						
TGFBI	0.03479	28.33	+	+				
TGFBR3	0.026672	1.78						
THBS1	0.000153	2.35	+	+	+			
THBS2	0.000839	1.93		+	+			
TNXB	0.000076	0.48						
TPSAB1/ TPSB2	0.000061	0.25						
TXN	0.001068	0.75			+			
TYMP	0.000015	0.26						
VCAN	0.000046	0.55	+	+	+			
VTN	0.000763	1.82						
WISP2	0.000061	0.25						
YBX1	0.030151	0.88	+		+			

Note: Proteins were selected from available datasets (SASP atlas) as statistically upregulated by senescence stimuli in conditioned media.

3.3 | The activity of Notch modulates the replicative SASP of human AT progenitors

To further investigate the Notch-dependent pathway highlighted in the replicative senescent AT progenitor transcriptome, ScAT

progenitors were submitted to additional senescence-promoting stimuli, including oxidative stress induced by H₂O₂ treatment and DNA damage induced by doxorubicin or etoposide treatments. The marked upregulation of *NOTCH3* transcript levels, detected by RTqPCR (confirming the RNA sequencing data), was only observed in

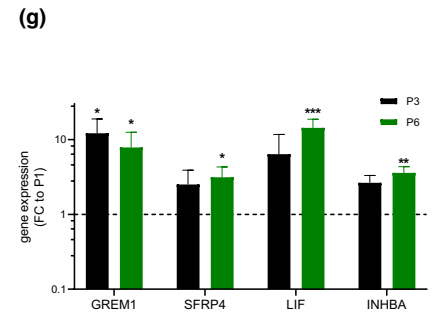
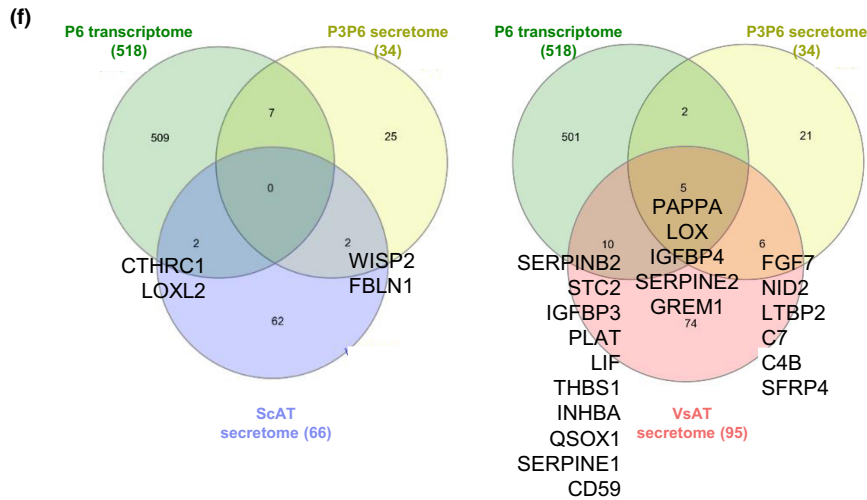
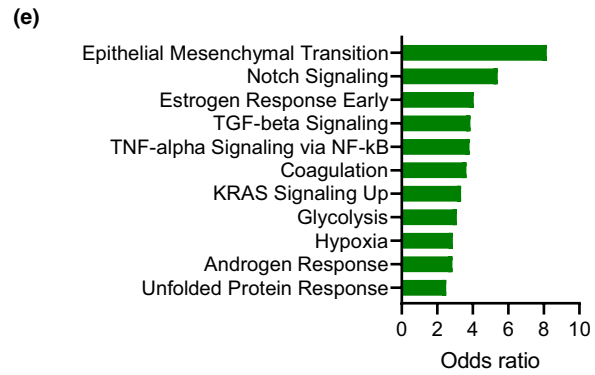
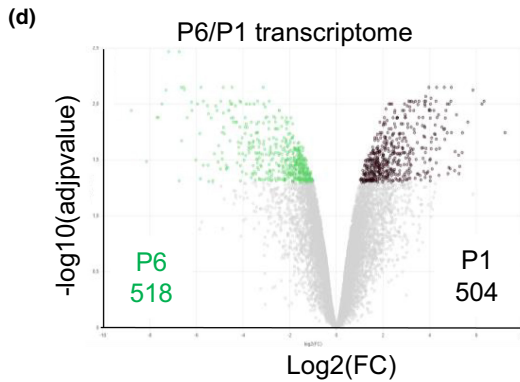
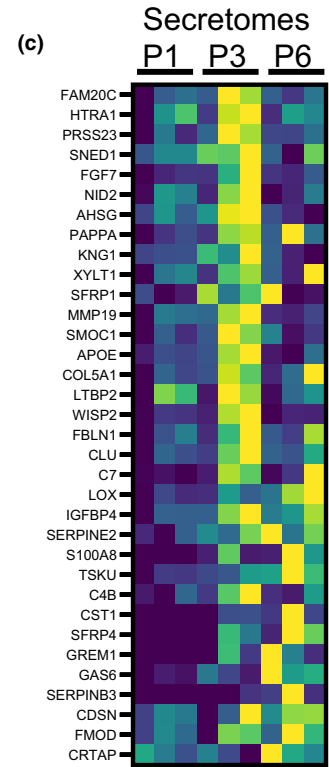
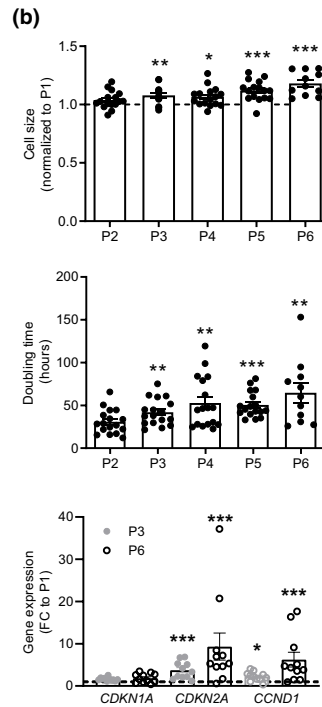
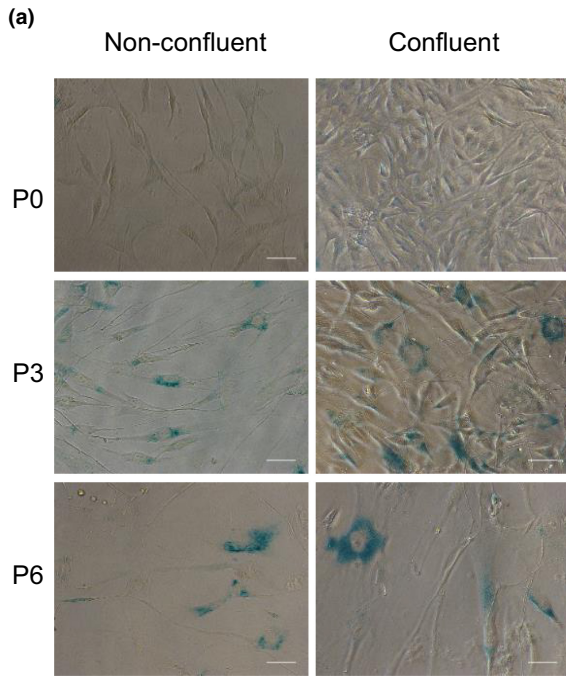




FIGURE 2 Replicative senescence-associated secretory phenotype of AT progenitor cells highlights components of the TGF β /BMP and WNT developmental pathways. (a) SA- β gal activity by colorimetric staining on nonconfluent or confluent progenitors at Passage 0 (P0), 3 (P3), and 6 (P6). Representative photomicrographs from $n = 3$ donors are shown. Scale bars: 50 μ m. (b) Changes in cell size according to increasing passages. Results are expressed as fold change over P1, means \pm SEM of $n = 11$ –17 independent experiments (one-way ANOVA, Dunnett's post-test, * $p < 0.05$, ** $p < 0.01$, *** $p < 0.001$ compared with P1); changes in doubling time according to increasing passages. Values are means \pm SEM of $n = 11$ –17 independent experiments (one-way ANOVA, Dunnett's post-test, ** $p < 0.01$, *** $p < 0.001$ compared with P2, changes in mRNA expression of *CDKN2A*, *CDKN1A*, and *CCND1* at P3 and P6. Results are expressed as fold change over P1, means \pm SEM of $n = 15$ independent experiments (one-way ANOVA, Dunn's post-test, *** $p < 0.001$ compared with P1). (c) Heatmap of differentially expressed proteins in paired analysis between P1 and P3 and P1 and P6 secretomes from three donors, (deep blue corresponding to the smallest value and yellow to the highest value). (d) Volcano plot of the twofold and more differentially expressed genes between P1 and P6 RNA sequencing transcriptomes performed in three donors. (e) Statistically significantly enriched pathways in the 518 DEGs upregulated in P6 transcriptome in the Human Molecular Signatures Database (MSigDB) hallmark gene sets **MSigDB Hallmark** (GSEA). (f) Venn diagram of DEGs upregulated in the P6 transcriptome, P3 and P6P3 secretome and ScAT (left) and VsAT (right) native progenitor-specific secretomes. (g) mRNA levels of SASP proteins *GREM1*, *SFRP4*, *LIF*, and *INHBA* determined in P1, P3, and P6 progenitor cells by RTqPCR. Results are expressed as fold change over P1, means \pm SEM of $n = 7$ donors (* $p < 0.05$, ** $p < 0.01$, *** $p < 0.001$ compared with P1)

P6 progenitors although both doxorubicin and etoposide increased the expression of senescent markers including *CDKN1A* and *CCND1* and γ H2AX nuclear foci (Figure 3a and Figure S2). Interestingly, the effect of replicative senescence was specific for *NOTCH3*, as *NOTCH1* remained unchanged (Figure 3a). The increased level of *NOTCH3* mRNA with replicative senescence was associated with an increased level of the cleaved form of NOTCH3 protein with the apparent molecular weight of 100kDa (Figure 3b). The basal levels of the canonical Notch target genes *HEYL* and *HES1* were not changed with replicative senescence (Figure 3c). To investigate the potential involvement of Notch pathway in the modulation of the replicative SASP, pharmacological approaches were performed to activate or inhibit Notch signaling in nonsenescent and senescent progenitors. Activation of Notch signaling was achieved by immobilized Notch ligand DLL4 (a member of the Delta-like family) while inhibition by treatment with the γ -secretase inhibitor LY411575, which prevents Notch cleavage (Figure 3d). As expected, Notch activation efficiently increased the mRNA level of Notch target genes *HEYL* and *HES1* as well as *NOTCH3* itself at P1. The stimulatory effects were completely inhibited by the presence of LY411575. Similar effects were observed in P3 and P6 progenitors, clearly showing that the senescent state did not alter Notch responsiveness (Figure 3e). Interestingly, Notch activation by DLL4 did not affect the expression of *GREM1* nor the one of *LIF*. *SFRP4* and *INHBA*, on the contrary, were upregulated regardless of the cellular state of senescence and in a γ -secretase-dependent manner (Figure 3f), indicating that Notch acted upstream of the SASP factors *SFRP4* and *INHBA*. Such an effect was not related to a pro-senescent impact of Notch activation since it did not increase but even rather slightly decreased the expression of both *CDKN2A* and *CCND1* at P3 and *CCND1* at P6 without affecting the expression level of *CDKN1A* (Figure 3g).

3.4 | NOTCH activation shifts progenitor cell fate balance toward myofibrogenesis over adipogenesis

To investigate the impact of Notch signaling on progenitor differentiation, immuno-selected progenitor cells (P1) were seeded on

immobilized NOTCH ligands JAG1 (a member of the Jagged family) or DLL4 and maintained under adipogenic or myofibrogenic culture conditions.

Under adipogenic conditions (Figure 4a), DLL4 and JAG1 ligands had different effects on NOTCH3 activation. Stimulation with DLL4, and not with JAG1, led to a rapid and transient increase in the Notch target gene *HES1* at day 1. By contrast, DLL4 led to a marked induction of *NOTCH3* mRNA at day 1, which remained elevated until day 10, while the expression of *NOTCH1* was weakly increased only at day 1 (Figure 4b). Notch activation by DLL4 led to a mild, albeit significant, decrease in adipogenesis, as shown by the decrease in lipid-laden cells (stained with Bodipy), without changing the number of cells (Figure 4c,d). It also reduced the expression of adipogenic genes (*ADIPOQ*, *GPDH*, and *PPARG2*) and brite adipogenic genes (*UCP1* and *ELOVL3*; Figure 4e). Adipogenic differentiation per se decreased the expression of *NOTCH3* and tended to increase the one of *NOTCH1* (Figure 4b). Likewise, isolated mature adipocytes expressed lower levels of *NOTCH3* and higher levels of *NOTCH1* compared with progenitor cells (Figure S3). Under myofibrogenic culture conditions in the presence of TGF β (Figure 4f), DLL4 but not JAG1 induced an increase of *HES1* and *NOTCH3* mRNA levels, which remained elevated until day 4 (Figure 4g). *NOTCH1* expression was not significantly modulated under the same conditions (Figure 4g). Notch activation by DLL4 further enhanced myofibrogenesis, as shown by the increase in α SMA-positive cells and the expression of myofibroblast genes (*ACTA2*, *COL1A1*, and *INHBA*; Figure 4h,j) with no impact on total cell number (Figure 4i). Analyses of RNAseq data retrieved from whole ScAT and VsAT from the GTEx database (<https://www.gtexportal.org>) showed that *NOTCH3* transcript levels were positively correlated with the ones of myofibrogenic- and SASP-related genes such as *ACTA2*, *COL1A1*, *COL3A1*, *INHBA*, *GREM1*, and *SFRP4* and with TGF β and EMT-related transcription factor *SNAI2* but not *SNAI1*. Conversely, *NOTCH3* levels were negatively correlated with the expression of the adipogenic-related markers *ADIPOQ*, *GPPD1*, *PLIN1*, and *PPARG*. Similar trends were observed for both ScAT and VsAT, but correlations were weaker in VsAT. These observations were specific for *NOTCH3* as the correlation with *NOTCH1* transcript levels exhibited the opposite pattern (Figure S4a,b).

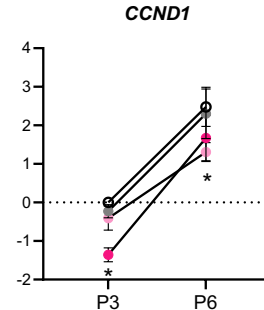
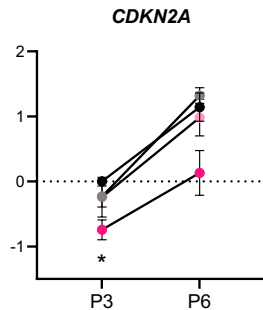
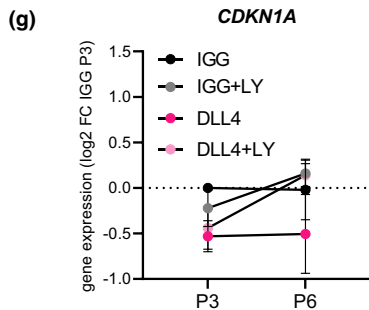
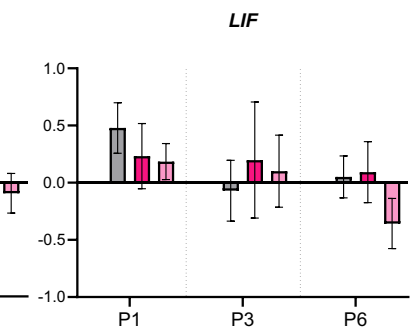
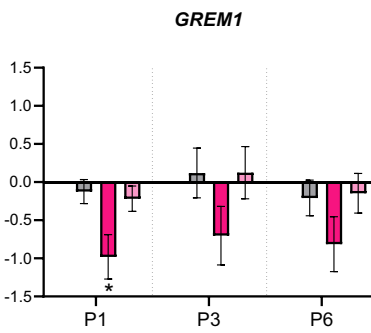
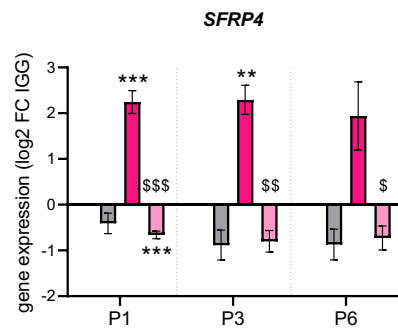
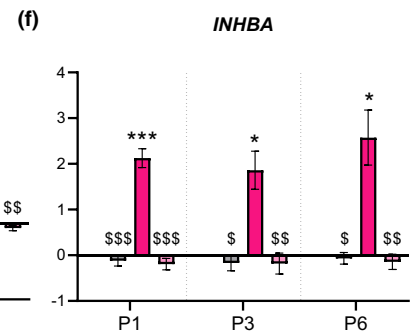
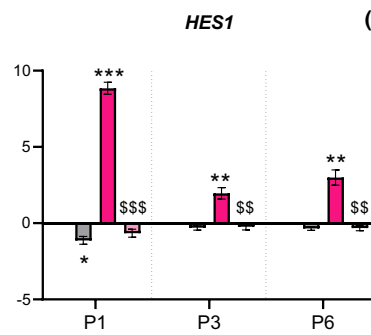
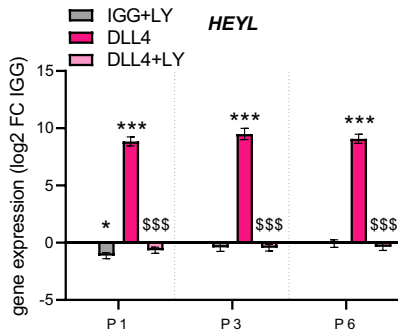
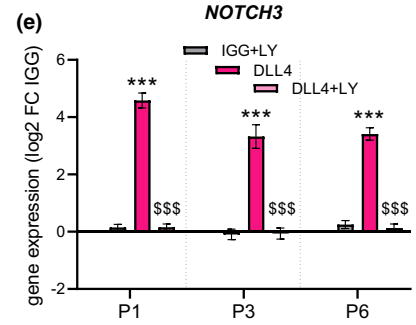
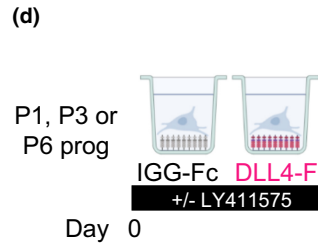
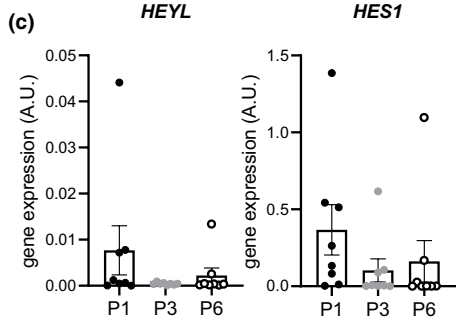
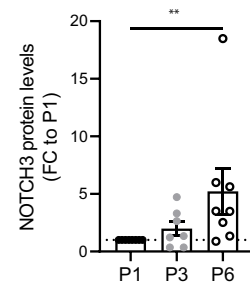
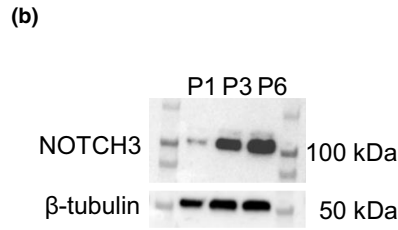
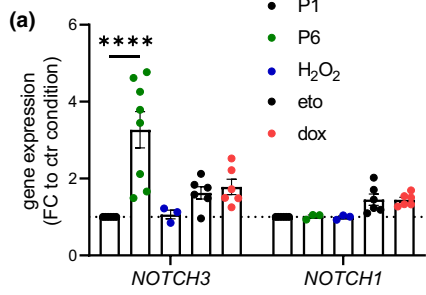




FIGURE 3 Replicative senescence upregulates the expression of Notch3 and does not alter the responses to Notch activation. (a) *NOTCH3* and *NOTCH1* transcript levels in progenitor cells at P1, at P6, after H₂O₂ or etoposide (eto) or doxorubicin (dox) treatments, determined by RTqPCR and RNAseq (H₂O₂ treatment) and normalized to respective P1 control cells (values are means \pm SEM of $n = 3$ –8 donors, two-way ANOVA, Dunnett's post-test, **** $p < 0.0001$). (b) *NOTCH3* protein level in progenitor cells at P1, P3, and P6 determined by western blot and quantification of the ratio between the shorter and the higher cleaved form normalized to the β -tubulin level. Results are expressed as fold change over P1, means \pm SEM of $n = 7$ –8 donors (one-way ANOVA, Dunn's post-test, ** $p < 0.01$). (c) mRNA levels of *HEYL* and *HES1* in progenitor cells at P1, P3, and P6 determined by RTqPCR (values are means \pm SEM of $n = 8$ distinct donors, one-way ANOVA, Dunn's post-test). (d) Immuno-selected ScAT P1, P3, or P6 progenitor cells were seeded on immobilized IGG control or NOTCH ligand DLL4 and cultured in basal medium supplemented or not with gamma-secretase inhibitor LY411575 (LY) for 4 days. mRNA levels of (e) *NOTCH3* and NOTCH target genes *HEYL* and *HES1*, (f) SASP factors *INHBA*, *SFRP4*, *GREM1*, and *LIF* determined at day 4 by RTqPCR. Results are expressed as log₂ fold change over IGG, means \pm SEM of $n = 7$ donors (two-way ANOVA, Tukey's post-test, * $p < 0.05$, ** $p < 0.01$, *** $p < 0.001$ compared with IGG, \$ $p < 0.05$, \$\$ $p < 0.01$, \$\$\$ $p < 0.001$ compared with DLL4). (g) mRNA levels of senescence markers *CDKN1A*, *CDKN2A*, and *CCND1* in P3 and P6 progenitor cells determined at day 4 by RTqPCR. Results are expressed as log₂ fold change over IGG P3, means \pm SEM of $n = 3$ –4 donors (two-way ANOVA, Dunnett's post-test)

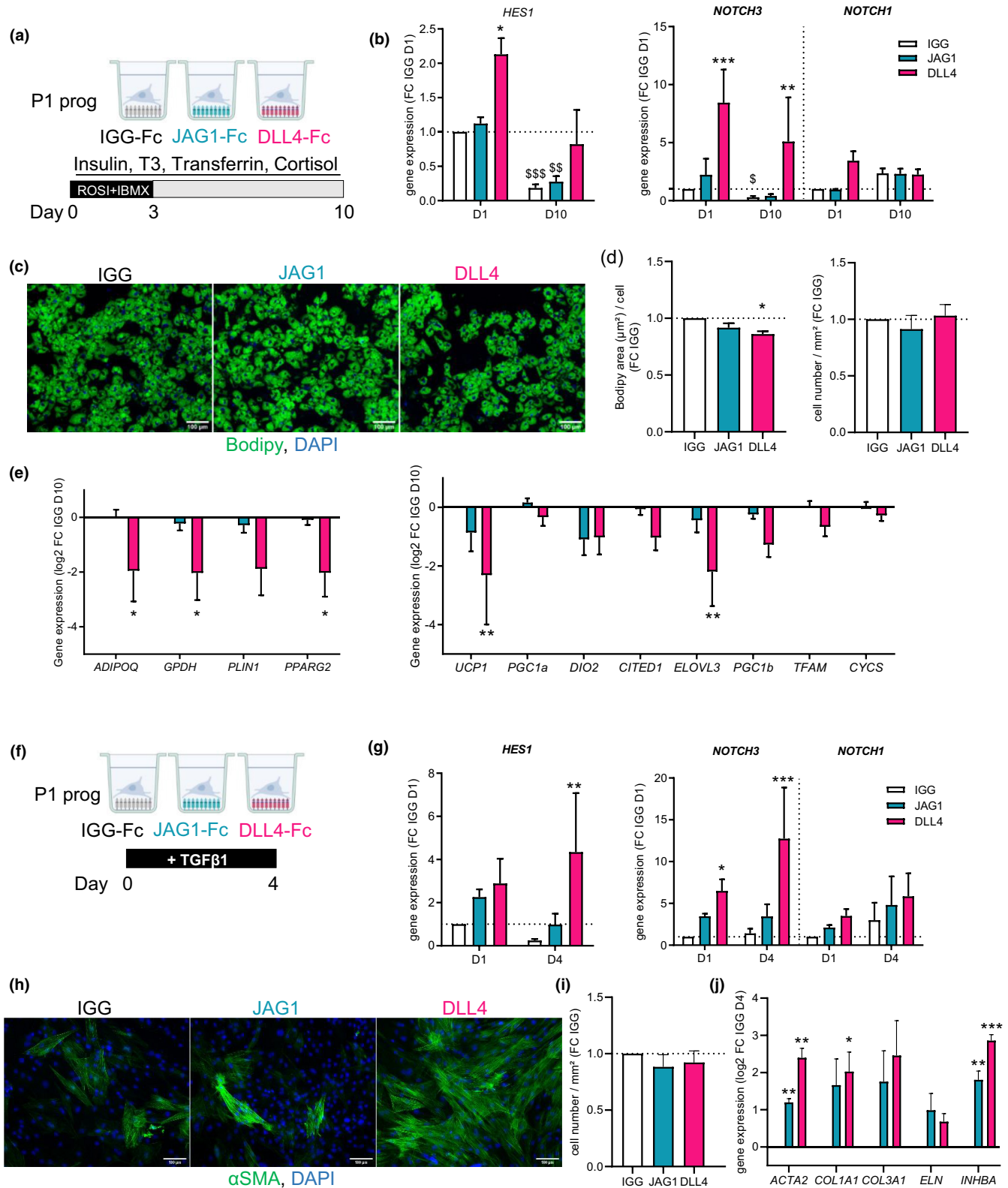
3.5 | NOTCH activation induces myofibrogenesis without exogenous addition of TGF β and remains active in senescent cells

To further characterize the cell-intrinsic impact of Notch activation in myofibrogenesis, immuno-selected progenitor cells (P1) were cultured in the presence or absence of DLL4 and LY411575, without TGF β 1, during 4 days. Since *JAG1* had at best a slight effect on myofibrogenesis, only the DLL4 ligand was used. Notch activation was sufficient to induce myofibroblast differentiation, as demonstrated by an increase in the number of α SMA-positive cells and the induction of myofibroblast genes (*ACTA2*, *COL1A1*, and *COL3A1*) by day 4 (Figure 5a,b). In parallel, the expression of *NGFR*, a marker for the premyofibroblast subset (Esteve et al., 2019), was increased within 4 days (Figure 5c). Notch-induced myofibrogenesis was completely abolished in the presence of the γ -secretase inhibitor LY411575 (Figure 5a–c), indicating a requirement for NOTCH receptor cleavage. Neither DLL4 nor LY411575 affected the cell number (Figure 5b). In addition, wound closure assays clearly demonstrated that the stimulation of Notch signaling by DLL4 increased the migratory capacity of progenitor cells compared with the IGG control, but to a lesser extent than TGF β treatment (Figure 5d). Notch activation increased EMT-inducing transcription factors *SNAI1* and *SNAI2* (Figure 5e) in a LY411575 sensitive manner. Immunostainings revealed a cytoplasmic fiber localization of NOTCH3, which coincided with α SMA labeling, at day 4 only in DLL4-differentiated progenitor cells (Figure 5f). Treatment with TGF β receptor inhibitor SB431542 did not impact the DLL4-induced upregulation of myofibroblast mRNA markers nor the DLL4-mediated cell migration although it partially inhibited, as expected, the one stimulated by TGF β (Figure 5g,h). C3H/HeOJ mice, a strain known to develop AT fibrosis in diet-induced obesity (Vila et al., 2014), were fed a high-fat diet for up to 6 weeks, and the visceral AT was used in RTqPCR for myofibrogenic-related genes *Acta2*, *Col1a1*, *Col3a1*, and *Eln*. While positive correlations were observed between *Notch3* expression and the panel of fibrosis markers, no correlations were found with *Notch1* mRNA levels (Figure S5a,b). In addition, a weak correlation was observed between *Notch3* and *Cdkn2a* levels but not with *Cdkn1a* or *Ccnd1*. Immuno-selected ScAT progenitor cells were

submitted to serial passaging and cultured at P3 and P6 for 4 days on DLL4 under basal conditions or in the presence of LY411575. Notch-induced myofibrogenesis was maintained at P3 and P6, as shown by an increased expression in myofibroblast genes (*COL1A1*, *COL3A1*, and *INHBA*), EMT-inducing transcription factors *SNAI1* and *SNAI2* and premyofibroblast marker *NGFR* (Figure 5i). All effects of DLL4 were abrogated by the γ -secretase inhibitor LY411575. Treatments of P3 and P6 progenitors with senolytics (dasatinib and quercetin) downregulated the expression of both *CDKN2A* and *CCND1*, as expected, with a stronger impact in P3 compared with P6 progenitors in the presence or not of DLL4 (Figure 5j). In parallel, senolytics repressed the basal expression of myofibrogenic-related genes including *COL1A1* and *COL3A1* at P3 and P6 and the ones of *INHBA* and *ACTA2* at P6, as well as the upregulated expression of *COL1A* and *COL3A1* promoted by Notch signaling at P3 (Figure 5k).

3.6 | Native premyofibroblasts accumulate in human VsAT with high levels of senescence and are the target of the NOTCH pathway

Obese patients were grouped in tertiles of low, intermediate, and high VsAT progenitor senescence. The group of patients with the highest percentage of SA- β -gal+ progenitors in VsAT had also a higher percentage of SA- β -gal+ progenitors in ScAT (Figure 6a). Among the clinical and anthropometrical characteristics and in agreement with the multivariate analysis (Figure 1e), the history of obesity reflected by the patient's BMI at the age of 20 was determinant of the degree of senescence in VsAT (Table 2). Age was also statistically significant between low and high senescence groups but with younger AT donors in the high senescence group (Table 2). Considering the two groups of patients with low and high percentage of VsAT senescent progenitors, we analyzed the progenitor subsets: MSCA1⁻/CD271⁻ (–/–) progenitors, MSCA1⁻/CD271⁺ (–/CD271⁺) premyofibroblasts, and MSCA1⁺ preadipocytes by flow cytometry. While the number of progenitor subsets was not different in ScAT between the two groups, there was a marked accumulation of –/CD271⁺ premyofibroblasts in VsAT from the high senescence group (Figure 6b). The adipocyte diameter distribution exhibited no



differences in ScAT regardless of the degree of senescence; however, we found a reduction in the percentage of 20 μ m small adipocytes in VsAT from the high senescence group (Figure S6). Finally, the three progenitor subsets were immuno-selected from ScAT. RTqPCR analyses revealed higher expression levels of both *NOTCH3* and the NOTCH target gene *HEY1* in the $-/\text{CD}271^+$ subset compared with

$-/\text{CD}271^+$ and *MSCA1*⁺ progenitor subsets (Figure 6c). Immuno-selected $-/\text{CD}271^+$ premyfibroblasts and $-/\text{CD}271^+$ progenitors were seeded on DLL4 under basal conditions for 4 days (Figure 6e). NOTCH3 activation induced myfibroblast differentiation of $-/\text{CD}271^+$ premyfibroblasts only, as shown by an increase in α SMA-positive cells and myfibroblast gene expression (*COL1A1*, *ELN*, and *INHBA*), together



FIGURE 4 NOTCH activation inhibits adipogenesis and promotes myofibrogenesis. (a) Immuno-selected ScAT P1 progenitor cells were seeded on immobilized IGG control (white) or NOTCH ligands JAG1 (cyan) or DLL4 (pink) and cultured in adipogenic medium for 10 days. (b) mRNA levels of *HES1*, *NOTCH3*, and *NOTCH1* determined at day 1 and day 10 by RTqPCR. Results are expressed as fold change over day 1 IGG control, means \pm SEM of $n = 6$ donors (two-way ANOVA, Dunnett's, and Sidak's post-test, $$$$p < 0.01$, $$$$$p < 0.001$ compared with respective treatment at day 1). (c) Representative photomicrographs of Bodipy (green) and DAPI (blue) stainings at day 10 (scale bar = 100 μ m). (d) Quantification of Bodipy area per cell (left panel) and cell number (right panel) at day 10, results are expressed as fold change over day 10 IGG control, means \pm SEM of $n = 3$ donors (one-way ANOVA, Dunnett's post-test). (e) mRNA levels of adipocyte markers (*ADIPOQ*, *GPDH*, *PLIN1*, and *PPARG2*) and brite adipocyte markers (*UCP1*, *PGC1A*, *DIO2*, *CITED1*, *ELOVL3*, *PGC1B*, *TFAM*, and *CYCS*) determined at day 10 by RTqPCR. Results are expressed as log₂ fold change over IGG control, means \pm SEM of $n = 6$ donors (two-way ANOVA, Dunnett's post-test). (f) Immuno-selected ScAT P1 progenitor cells were seeded on immobilized IGG control or NOTCH ligands JAG1 or DLL4 (colored as in a) and cultured in the presence of TGF β 1 during 4 days. (g) mRNA levels of *HES1*, *NOTCH3*, and *NOTCH1* determined at day 1 and day 4 by RTqPCR. Results are expressed as fold change over day 1 IGG control, means \pm SEM of $n = 4$ donors (two-way ANOVA, Tukey's post-test). (h) Representative photomicrographs of α SMA (green) and DAPI (blue) staining at day 4 (scale bar = 50 μ m). (i) Quantification of cell number at day 4. Results are expressed as fold change over IGG, means \pm SEM of $n = 5$ independent experiments (one-way ANOVA, Dunnett's post-test). (j) mRNA levels of myofibroblast markers (*ACTA2*, *COL1A1*, *COL3A1*, *ELN*, and *INHBA*) determined at day 4 by RTqPCR. Results are expressed as log₂ fold change over IGG, means \pm sem of $n = 4$ donors (two-way ANOVA, Dunnett's post-test). * $p < 0.05$, ** $p < 0.01$, *** $p < 0.001$ compared with IGG

with increased expression of the EMT-inducing transcription factor *SNAI1* (Figure 6d,e). No effects were observed with the $-/-$ progenitor subset.

4 | DISCUSSION

There has been an increasing amount of evidence, implicating that adipose tissue (AT) senescence plays a role in both obesity- and age-induced processes responsible for metabolic abnormalities. We show that SA- β -Gal-positive cells accumulate in both ScAT and VsAT of obese subjects by colorimetric imaging approaches, as described previously (Conley et al., 2020; Gustafson et al., 2019; Rouault et al., 2021). Differences in whole tissue SA- β -Gal staining have been reported between ScAT and VsAT of obese patients (Rouault et al., 2021). Unsupervised analysis of flow cytometry datasets allows the identification of SA- β -Gal+ cells in the SVC, revealing that macrophages represent the largest proportion, followed by progenitors and endothelial cells. SA- β -Gal+ macrophages have been previously reported in AT, but their senescent phenotype remains debated (Hall et al., 2017). Additional experiments are needed to further characterize the SA- β -Gal+ macrophage population in human AT. They are probably located within the SA- β -Gal+ crown-like structures we observed surrounding human adipocytes in this study, also described in mouse AT (Rabhi et al., 2022). While in ScAT, the majority of SA- β -Gal+ stromal cells are macrophages, progenitors and macrophages are equally represented in VsAT. No difference in the absolute number of SA- β -Gal+ macrophages is found between fat depots. The endothelial cell cluster, which does contain SA- β -Gal+ cells, consists of a limited number of cells; due to the small biopsy size, and was not analyzed further. Endothelial senescence has been shown to be sufficient to induce adipocyte dysfunction and metabolic disorders in a mouse model (Barinda et al., 2020). We previously reported higher endothelial senescence in VsAT from obese individuals compared with ScAT and with age in ScAT (Briot et al., 2018; Villaret et al., 2010). Finally, SA- β -Gal+ progenitors are both modulated by AT location in terms of their proportion and

number, with higher amounts found in VsAT. Progenitors are key cellular components for fat depot repair, physiological turnover, and expansion under energy excess. Although adipocyte turnover is considered to be a slow process in adults (Spalding et al., 2008), chronic renewal pressure exerted on progenitor cells is higher in obese versus lean individuals due to the greater number of adipocytes. In the present study, multivariable unbiased analysis highlighted the association between senescence parameters and obesity, more marked in VsAT compared with ScAT. Moreover, the group of patients with the highest proportion of senescent progenitors in VsAT is characterized by an early obesity trajectory reflected by an increased BMI at the age of 20 years old. It is therefore tempting to speculate that high VsAT progenitor senescence is a consequence of the chronic replicative pressure exerted by a longer history of obesity. The proliferative rate of AT progenitor cells is distinct according to fat depot location, with less proliferation in visceral compared with subcutaneous AT (Tchkonia et al., 2006). The present data suggest that the depot-specific differences in senescence may be an additional determinant of the progenitor proliferation rate. Combined transcriptomics and proteomics datasets, obtained from both native and in vitro replicative senescent immuno-selected progenitors and comparison with other available SASP datasets, highlight common core SASP factors in both ScAT and VsAT including *INHBA* as well as fat depot- and replicative senescence-specific SASP factors. In particular, *GREM1* and *SFRP4*, endogenous antagonists of the BMP and WNT pathways, respectively, are markers of the VsAT secretome and elevated with replicative senescence. *SFRP4* and *GREM1* are not only emerging adipokines with higher expression in VsAT (Hedjazifar et al., 2020) but also contained within published senescent gene sets (Gustafson et al., 2019) (<https://senequest.net/>). In addition to finding BMP and WNT antagonists in the SASP, our study highlights the importance of the Notch developmental pathway in the senescence-associated intrinsic phenotype. Increased *NOTCH3* expression has already been reported during replicative senescence induced by telomere shortening in human cell lines (Cui et al., 2013). Our present data demonstrate that *NOTCH3* expression also increased with senescence in human AT progenitors. This increase is specific for

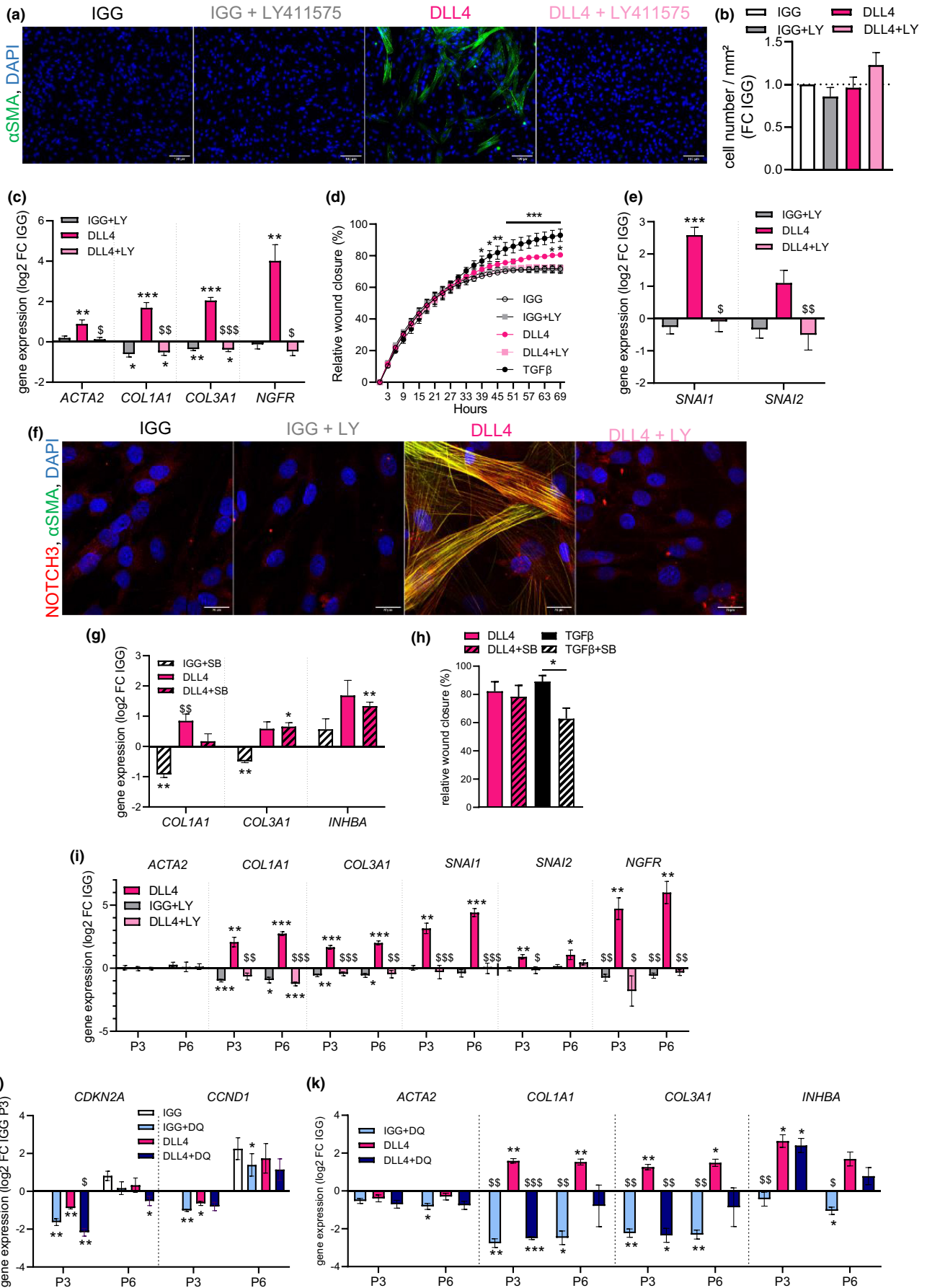
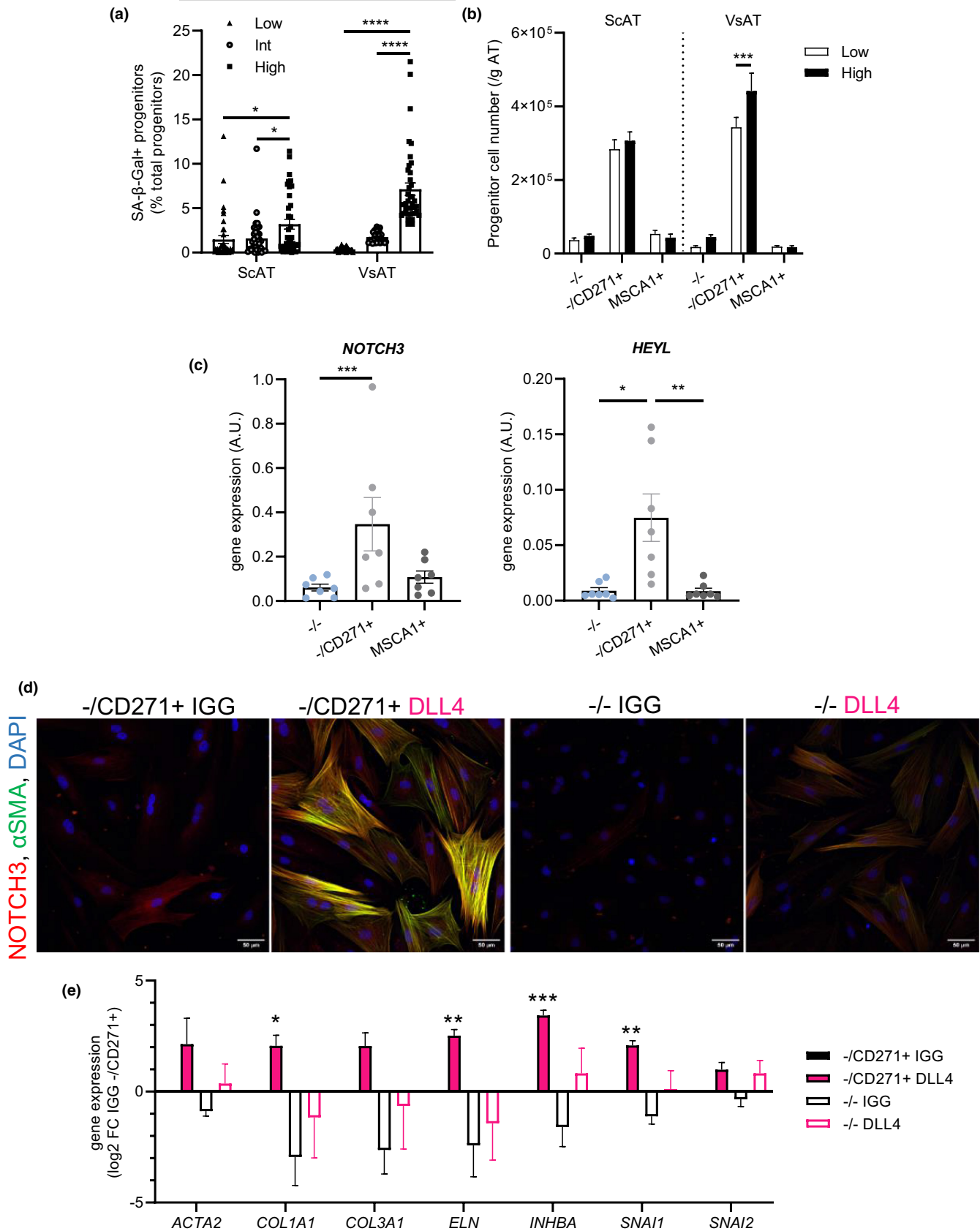




FIGURE 5 NOTCH-mediated promotion of myofibrogenesis is not dependent of the TGF β pathway. (a) Representative photomicrographs of α SMA (green) and DAPI (blue) stainings in immuno-selected ScAT P1 progenitor cells seeded on immobilized IGG control (white) or NOTCH ligand DLL4 (pink) and cultured in basal medium (without TGF β 1) supplemented or not with gamma-secretase inhibitor LY411575 (LY: IGG gray; DLL4 light pink) during 4 days. (scale bar = 100 μ m). (b) Quantification of cell number at day 4. Results are expressed as fold change over IGG, means \pm SEM of $n = 3$ donors (one-way ANOVA, Tukey's post-test). (c) mRNA levels of myofibroblast markers (*ACTA2*, *COL1A1*, and *COL3A1*) determined at day 4 by RTqPCR. (d) Results are expressed as log₂ fold change over IGG, means \pm SEM of $n = 7$ –11 donors two-way ANOVA, Dunnett's post-test, * $p < 0.05$, ** $p < 0.01$, *** $p < 0.001$ compared with IGG, \$ $p < 0.05$, \$\$ $p < 0.01$, \$\$\$ $p < 0.001$ compared with DLL4). (e) Relative wound closure expressed as percentage of area over time of progenitor cells seeded on immobilized IGG control or DLL4, treated or not with gamma-secretase inhibitor LY411575, or in the presence of TGF β 1 (black), and subjected to scratch assay. Images were captured every 3 h during 69 h. The scratch area at time point 0 was set to 0. Values are means \pm SEM of $n = 3$ donors, two-way ANOVA, Dunnett's post-test, * $p < 0.05$, ** $p < 0.01$, *** $p < 0.001$ (from time points 45–69) compared with IGG. (f) mRNA levels of epithelial-mesenchymal transition genes *SNAI1* and *SNAI2* determined at day 4 by RTqPCR. Results are expressed as log₂ fold change over IGG, means \pm SEM of $n = 7$ donors (two-way ANOVA, Dunnett's post-test, *** $p < 0.001$ compared with IGG, \$ $p < 0.05$, \$\$ $p < 0.01$ compared with DLL4). (g) Representative photomicrographs of NOTCH3 (red), DAPI (blue) and α SMA (green) stainings in progenitor cells seeded on IGG or DLL4 ligand with and without LY411575 at day 4 (scale bar = 20 μ m). (h) mRNA levels of myofibroblast markers (*COL1A1*, *COL3A1*, and *INHBA*) in immuno-selected P1 progenitor cells seeded on IGG (white) or NOTCH ligand DLL4 (pink) and cultured in basal medium supplemented or not with TGF β receptor inhibitor SB431542 (IGG+SB hatched white, DLL4+SB hatched pink) during 4 days, determined by RTqPCR. Results are expressed as log₂ fold change over IGG, means \pm SEM of $n = 4$ donors (two-way ANOVA, Tukey's post-test, * $p < 0.05$, ** $p < 0.01$ compared with IGG, \$\$\$ $p < 0.001$ compared with DLL4). (i) Relative wound closure (expressed as percentage of area) 72 h after scratch wound of progenitor cells seeded on DLL4 or treated with TGF β 1 (black) in the presence or not of SB431542 (TGF β + SB hatched black). Values are mean \pm SEM of $n = 4$ donors (one-way ANOVA and Sidak's post-test). (j) mRNA levels of myofibroblast markers (*ACTA2*, *COL1A1*, and *COL3A1*), epithelial-mesenchymal transition (*SNAI1* and *SNAI2*) and premyofibroblast marker (*NGFR*) in immuno-selected ScAT P3 and P6 progenitor cells seeded on IGG control (white) or DLL4 (pink) and cultured in basal medium supplemented or not with gamma-secretase inhibitor LY411575 (LY: IGG gray; DLL4 light pink) during 4 days determined by RTqPCR. Results are expressed as log₂ fold change over IGG, means \pm SEM of $n = 7$ donors (two-way ANOVA, Tukey's post-test, * $p < 0.05$, ** $p < 0.01$, *** $p < 0.001$ compared with IGG, \$ $p < 0.05$, \$\$ $p < 0.01$, \$\$\$ $p < 0.001$ compared with DLL4). (k) mRNA levels of senescence markers (*CDKN2A* and *CCND1*) in immuno-selected ScAT P3 and P6 progenitor cells seeded on IGG control (white) or DLL4 (pink) and cultured in basal medium supplemented or not with dasatinib and quercetin (DQ; IGG+DQ light blue; DLL4+DQ dark blue) during 4 days, determined by RTqPCR. Results are expressed as log₂ fold change over P3 IGG, means \pm SEM of $n = 4$ donors (two-way ANOVA, Tukey's post-test, * $p < 0.05$, ** $p < 0.01$ compared with IGG, \$ $p < 0.05$ compared with DLL4). (l) mRNA levels of myofibroblast markers (*ACTA2*, *COL1A1*, *COL3A1*, and *INHBA*) determined at day 4 by RTqPCR. Results are expressed as log₂ fold change over IGG, means \pm SEM of $n = 4$ donors (two-way ANOVA, Tukey's post-test, * $p < 0.05$, ** $p < 0.01$, *** $p < 0.001$ compared with IGG, \$ $p < 0.05$, \$\$ $p < 0.01$, \$\$\$ $p < 0.001$ compared with DLL4).

NOTCH3 since the mRNA levels of *NOTCH1* are not impacted and specific to replicative senescence compared with oxidative or DNA damage stress. The canonical Notch target genes *HES1* and *HEYL* were not modulated with cell passaging, suggesting that replicative senescence is not associated with a sustained activation of Notch-dependent pathway without precluding a pulsatile activation (Nandagopal et al., 2018) and/or oscillatory changes in the levels of these genes with short mRNA half-lives (Kobayashi & Kageyama, 2014). Developmental pathways modulate progenitor fate during self-renewal and differentiation. While BMP and WNT-dependent pathways are potent pro-adipogenic stimuli in AT, the net impact of NOTCH signaling on adipogenesis, in particular NOTCH1, is controversial (Shan et al., 2017). As an antidevelopmental process, senescence is more often associated with impaired stem cell/progenitor differentiation. Senescent AT stromal cells from aged/obese mice and humans exhibit a decreased adipogenic potential (Le Pelletier et al., 2021; Xu, Palmer, et al., 2015), while a targeted reduction in senescence enhances adipogenesis (Xu, Palmer, et al., 2015). Depending on tissue context and cell type, senescence may also promote the myofibrogenic differentiation, such as in wounded skin (Demaria et al., 2014) or inhibit it through a modulation of Notch/TGF β axis (Lopez-Antona et al., 2022). Our data demonstrate that Notch activation has a major impact in the determination of AT progenitor fate since it impairs white and brite adipogenesis while

promoting myofibrogenesis. Both NOTCH ligands, DLL4 and JAG1, did not trigger similar effects, with weak to no impact of JAG1. Although additional experiments will be needed to clearly define the underlying molecular mechanism, distinct ligands can activate, through the same Notch receptor, different target genes and cell fate by defining distinct Notch receptor activation dynamics, that is, sustained or pulsatile (Nandagopal et al., 2018). Interestingly, the dynamic fluctuation of NOTCH1 activity associated with oncogene-induced senescence has been involved in the balance between distinct SASP promoting a TGF β rich secretome (Hoare et al., 2016). The present study clearly showed that the promotion of myofibrogenesis by Notch activity was observed even in the presence of exogenously added TGF β , strongly suggesting additive distinct mechanisms. In agreement, the pharmacological inhibition of the TGF β pathway did not alter the Notch-dependent activation of progenitor migration and myofibrogenesis. Notch activity in nonsenescent and in replicative senescent progenitors promoted the expression of SASP-related factors including SFRP4 and *INHBA*. In oncogene-induced senescence, the SASP induces a secondary senescence in surrounding cells that is mediated by Notch signaling (Teo et al., 2019). Whether a similar impact is at play in the AT progenitors remains to be studied but is unlikely since Notch activation was associated with an inhibition rather than a stimulation of the senescent markers *CDKN2A* and *CCND1*. NOTCH3 has already been



involved in fibrosis (Ramachandran et al., 2019). Since positive correlations between *NOTCH3* (but not with *NOTCH1*) and myofibrogenic-related gene expression were observed in human and

mouse AT, it is strongly suggested that *NOTCH3* is also the active Notch receptor in AT myofibrogenesis although gene editing approaches will permit to clearly state about the molecular identity of



FIGURE 6 Native $-/CD271^+$ premyofibroblasts accumulate in VsAT with senescence and are the target of the NOTCH3 pathway. (a) Percentage of SA- β -gal $^+$ progenitors in ScAT and VsAT when donors were partitioned into tertiles by low, intermediate (int), or high SA- β -gal $^+$ percentage in VsAT. Values represent means \pm SEM of $n = 38$ donors in low, $n = 39$ in int and $n = 39$ in high VsAT senescence groups (two-way ANOVA and Tukey's post-test). (b) Number of progenitor cell subset per gram of ScAT and VsAT from patients in the low (white) and high (black) VsAT senescent tertiles from Figure 1e. Results are expressed as means \pm SEM of $n = 38$ low and $n = 39$ high donors per group (two-way ANOVA, Tukey's post-test). (c) mRNA levels of *NOTCH3* and *HEYL* in freshly isolated progenitor cell subsets (*MSCA1⁻/CD271⁻* ($-/-$, blue), *MSCA1⁻/CD271⁺* ($-/CD271^+$, *NGFR⁺*, light gray) premyofibroblasts and *MSCA1⁺* (*ALPL⁺*, dark gray) preadipocytes immuno-selected from ScAT. Results are expressed as means \pm SEM of $n = 7$ donors (one-way ANOVA, Dunn's post-test). (d) Representative photomicrographs of NOTCH3 (red), α SMA (green) and DAPI (blue) stainings P1 in $-/CD271^+$ and $-/-$ progenitor subsets immuno-selected from ScAT, seeded on IGG control or NOTCH ligand DLL4, and cultured in basal medium during 4 days (scale bar = 50 μ m). (e) mRNA levels of myofibroblast markers (*ACTA2*, *COL1A1*, *COL3A1*, *ELN*, and *INHBA*) and epithelial-mesenchymal transition markers (*SNAI1* and *SNAI2*) in $-/CD271^+$ and $-/-$ progenitor subsets seeded on IGG control ($-/CD271^+$ black, $-/-$ white) or NOTCH ligand DLL4 ($-/CD271^+$ pink, $-/-$ pink outline) determined at day 4 by RTqPCR. Results are expressed as log₂ fold change over IGG $-/CD271^+$ cells, means \pm SEM of $n = 5$ independent experiments (two-way ANOVA, Dunnett's post-test, * $p < 0.05$, ** $p < 0.01$, *** $p < 0.001$ compared with IGG)

TABLE 2 Clinical and anthropometric parameters according to VsAT progenitor senescence

	VsAT progenitor senescence								
	Low		Int		High		Adj P low versus Int	Adj P low versus High	Adj P Int versus High
Number of patients	38		39		39				
Ratio male/female	0.12		0.08		0.11				
Diabetic (%)	18.5		18.0		15.5				
	Mean	SD	Mean	SD	Mean	SD			
Glucose (mmol/L)	5.8	1.5	5.9	1.5	5.8	1.2	ns	ns	ns
HbA1c (%)	6.0	1.1	6.0	0.8	5.9	0.8	ns	ns	ns
Triglycerides (mmol/L)	1.5	0.9	1.3	0.7	1.3	0.6	ns	ns	ns
Cholesterol (mmol/L)	5.3	0.9	5.1	0.8	5.2	1.0	ns	ns	ns
HDL (mmol/L)	1.2	0.3	1.2	0.3	1.1	0.2	ns	ns	ns
LDL (mmol/L)	3.5	0.8	3.3	0.8	3.4	0.9	ns	ns	ns
SGOT/ASAT (IU/L)	24.1	12.8	24.7	10.8	23.6	10.2	ns	ns	ns
SGPT/ALAT (IU/L)	35.6	22.9	36.3	19.3	38.2	22.5	ns	ns	ns
HOMA-IR	6.1	4.3	4.8	2.8	5.4	3.9	ns	ns	ns
Waist-to-hip ratio	0.98	0.12	0.93	0.13	0.95	0.12	ns	ns	ns
Age (years)	43.39	9.84	41.60	10.26	39.41	9.83	ns	0.0351	ns
BMI (kg/m ²) at 20 years	28.22	6.96	30.02	7.46	32.27	8.40	ns	0.0307	ns
Actual BMI (kg/m ²)	43.23	4.56	44.47	6.06	45.06	7.05	ns	ns	ns

Note: Statistical analyses were performed using two-way ANOVA followed by Tukey's multiple comparisons test (ns nonsignificant).

the Notch receptor. We show that NOTCH3 protein, upon activation, localizes on fibers, a staining pattern that can be found within the Human Protein Atlas. While further investigation is required to conclude that the change in protein subcellular localization from membranes to fibers is responsible for cytoskeletal remodeling of myofibroblasts, it is associated with increased migratory capacity and expression of EMT transcription factors, *SNAI1* and *SNAI2*. Our data show that the NOTCH3-dependent pathway is enriched in the $-/CD271^+$ premyofibroblasts compared with the other cell subsets and sufficient to induce their differentiation. Additionally, the group of patients with the highest progenitor senescence in VsAT is characterized by higher $-/CD271^+$ premyofibroblast accumulation, supporting the hypothesis that NOTCH activity contributes to the

depot-specific enrichment of $-/CD271^+$ subsets that we previously reported (Esteve et al., 2019). Our findings also suggest that it will be worthwhile to investigate the role of NOTCH3 in wound healing, especially in light of a recent study describing that insufficient induction of AT senescence after injury is a pathological mechanism of diabetic wound healing (Kita et al., 2022).

As a consequence of the defect in adipocyte renewal, the accumulation of SA- β -Gal $^+$ cells in mouse and human ScAT has been associated with adipocyte hypertrophy (Gustafson et al., 2019; Xu, Palmer, et al., 2015) and has a negative impact on systemic metabolism. In agreement with a recent study (Ishaq et al., 2022), we did not observe differences in adipocyte hypertrophy nor in systemic metabolic parameters in the patients grouped according to VsAT



progenitor senescence. One cannot exclude that other cell types, including adipocytes, endothelial cells, and/or macrophages may provide a stronger contribution than progenitors alone in the link between SA- β -Gal+ cell accumulation and adipocyte hypertrophy and/or metabolic impairment associated with obesity. Whether such a mechanism is also involved in aging remains to be established, especially since uncontrolled fibrosis is a common hallmark of aged tissues; referred to as “fibroageing” (Selman & Pardo, 2021). We did not observe positive association between the accumulation of senescent progenitors and age but rather the inverse association; however, our cohort was not designed for the study of chronological aging but rather for the study of obesity-accelerated aging. Finally, since in vitro cell expansion is required for mesenchymal stromal cell-based regenerative therapy, NOTCH3 may represent an interesting molecular actor to monitor and target replicative senescence.

AUTHOR CONTRIBUTIONS

N.B., A.Br., J.-C.G., and A.Bo. designed the experiments. N.B., V.J., D.E., A.R., C.B., P.V., J.F., L.M., P.D., E.M., C.C., and J.G. performed experiments and collected the data. A.Z.G. isolated the progenitor subsets with cell sorter for in vitro studies. C.D., M.G., C.P., Y.V., M.D., and J.S.I. were involved in generating and analysis of mass spectrometry and transcriptomic data. S.L. collected AT and patient information from the SENADIP cohort. J.-L.G. collected AT from dermolipectomies. N.B., A.Br., J.G., J.-C.G., and A.Bo. were involved in the guidance and concept developments of the study. N.B. and A.Bo. wrote the paper. All authors carefully read and reviewed the final version of the paper.

ACKNOWLEDGMENTS

We acknowledge the support of E. Riant (Genotoul TRI Cytometry), F. Martins and E. Lhuillier (Genotoul GeT Genomic and Transcriptomic), R. Flores-Flores (Genotoul TRI Imaging), A. Lucas and S. Fried (We-Met) and L. Ligat (technical facility CRCT). This work was supported by AVIESAN (Inserm/Sanofi R&D), Inserm, Sanofi Research & Development. N. Boulet was supported by a Fondation de la Recherche Médicale (FRM) fellowship (ARF20170938868).

CONFLICT OF INTEREST

The authors declare no competing interests.

DATA AVAILABILITY STATEMENT

All RNAseq datasets generated and used in this study will be deposited and available from the NCBI Gene Expression Omnibus (GEO) portal after the acceptance of the manuscript.

ORCID

Nathalie Boulet  <https://orcid.org/0000-0003-1011-3474>

REFERENCES

Autelitano, F., Loyaux, D., Roudieres, S., Deon, C., Guette, F., Fabre, P., Ping, Q., Wang, S., Auvergne, R., Badarinarayana, V., Smith, M., Guillemot, J. C., Goldman, S. A., Natesan, S., Ferrara, P., & August,

- P. (2014). Identification of novel tumor-associated cell surface sialoglycoproteins in human glioblastoma tumors using quantitative proteomics. *PLoS One*, 9(10), e110316. <https://doi.org/10.1371/journal.pone.0110316>
- Barinda, A. J., Ikeda, K., Nugroho, D. B., Wardhana, D. A., Sasaki, N., Honda, S., Urata, R., Matoba, S., Hirata, K. I., & Emoto, N. (2020). Endothelial progeria induces adipose tissue senescence and impairs insulin sensitivity through senescence associated secretory phenotype. *Nature Communications*, 11(1), 481. <https://doi.org/10.1038/s41467-020-14387-w>
- Basisty, N., Kale, A., Jeon, O. H., Kuehnemann, C., Payne, T., Rao, C., Holtz, A., Shah, S., Sharma, V., Ferrucci, L., Campisi, J., & Schilling, B. (2020). A proteomic atlas of senescence-associated secretomes for aging biomarker development. *PLoS Biology*, 18(1), e3000599. <https://doi.org/10.1371/journal.pbio.3000599>
- Briot, A., Decaunes, P., Volat, F., Belles, C., Coupaye, M., Ledoux, S., & Bouloumie, A. (2018). Senescence alters PPARgamma (peroxisome proliferator-activated receptor gamma)-dependent fatty acid handling in human adipose tissue microvascular endothelial cells and favors inflammation. *Arteriosclerosis, Thrombosis, and Vascular Biology*, 38(5), 1134–1146. <https://doi.org/10.1161/ATVBAHA.118.310797>
- Burton, D. G. A., & Faragher, R. G. A. (2018). Obesity and type-2 diabetes as inducers of premature cellular senescence and ageing. *Biogerontology*, 19(6), 447–459. <https://doi.org/10.1007/s10522-018-9763-7>
- Campisi, J. (2013). Aging, cellular senescence, and cancer. *Annual Review of Physiology*, 75, 685–705. <https://doi.org/10.1146/annurev-physiol-030212-183653>
- Conley, S. M., Hickson, L. J., Kellogg, T. A., McKenzie, T., Heimbach, J. K., Taner, T., Tang, H., Jordan, K. L., Saadiq, I. M., Woollard, J. R., Isik, B., Afarideh, M., Tchkonja, T., Kirkland, J. L., & Lerman, L. O. (2020). Human obesity induces dysfunction and early senescence in adipose tissue-derived mesenchymal stromal/stem cells. *Frontiers in Cell and Development Biology*, 8, 197. <https://doi.org/10.3389/fcell.2020.00197>
- Cui, H., Kong, Y., Xu, M., & Zhang, H. (2013). Notch3 functions as a tumor suppressor by controlling cellular senescence. *Cancer Research*, 73(11), 3451–3459. <https://doi.org/10.1158/0008-5472.CAN-12-3902>
- Demaria, M., Ohtani, N., Youssef, S. A., Rodier, F., Toussaint, W., Mitchell, J. R., Laberge, R. M., Vijg, J., Van Steeg, H., Dolle, M. E., Hoeijmakers, J. H., de Bruin, A., Hara, E., & Campisi, J. (2014). An essential role for senescent cells in optimal wound healing through secretion of PDGF-AA. *Developmental Cell*, 31(6), 722–733. <https://doi.org/10.1016/j.devcel.2014.11.012>
- Emont, M. P., Jacobs, C., Essene, A. L., Pant, D., Tenen, D., Colleluori, G., Di Vincenzo, A., Jorgensen, A. M., Dashti, H., Stefek, A., McGonagle, E., Strobel, S., Laber, S., Agrawal, S., Westcott, G. P., Kar, A., Veregge, M. L., Gulko, A., Srinivasan, H., ... Rosen, E. D. (2022). A single-cell atlas of human and mouse white adipose tissue. *Nature*, 603(7903), 926–933. <https://doi.org/10.1038/s41586-022-04518-2>
- Esteve, D., Boulet, N., Belles, C., Zakaroff-Girard, A., Decaunes, P., Briot, A., Veeranagouda, Y., Didier, M., Remaury, A., Guillemot, J. C., Ledoux, S., Dani, C., Bouloumie, A., & Galitzky, J. (2019). Lobular architecture of human adipose tissue defines the niche and fate of progenitor cells. *Nature Communications*, 10(1), 2549. <https://doi.org/10.1038/s41467-019-09992-3>
- Gustafson, B., Nerstedt, A., & Smith, U. (2019). Reduced subcutaneous adipogenesis in human hypertrophic obesity is linked to senescent precursor cells. *Nature Communications*, 10(1), 2757. <https://doi.org/10.1038/s41467-019-10688-x>
- Hall, B. M., Balan, V., Gleiberman, A. S., Strom, E., Krasnov, P., Virtuoso, L. P., Rydkina, E., Vujcic, S., Balan, K., Gitlin, I. I., Leonova, K. I., Consiglio, C. R., Gollnick, S. O., Chernova, O. B., & Gudkov, A. V. (2017). p16(Ink4a) and senescence-associated beta-galactosidase



- can be induced in macrophages as part of a reversible response to physiological stimuli. *Aging (Albany NY)*, 9(8), 1867–1884. <https://doi.org/10.18632/aging.101268>
- Hedjazifar, S., Khatib Shahidi, R., Hammarstedt, A., Bonnet, L., Church, C., Boucher, J., Blüher, M., & Smith, U. (2020). The novel Adipokine gremlin 1 antagonizes insulin action and is increased in type 2 diabetes and NAFLD/NASH. *Diabetes*, 69(3), 331–341. <https://doi.org/10.2337/db19-0701>
- Hoare, M., Ito, Y., Kang, T. W., Weekes, M. P., Matheson, N. J., Patten, D. A., Shetty, S., Parry, A. J., Menon, S., Salama, R., Antrobus, R., Tomimatsu, K., Howat, W., Lehner, P. J., Zender, L., & Narita, M. (2016). NOTCH1 mediates a switch between two distinct secretomes during senescence. *Nature Cell Biology*, 18(9), 979–992. <https://doi.org/10.1038/ncb3397>
- Ishaq, A., Tchkonja, T., Kirkland, J. L., Siervo, M., & Saretzki, G. (2022). Palmitate induces DNA damage and senescence in human adipocytes in vitro that can be alleviated by oleic acid but not inorganic nitrate. *Experimental Gerontology*, 163, 111798. <https://doi.org/10.1016/j.exger.2022.111798>
- Kita, A., Saito, Y., Miura, N., Miyajima, M., Yamamoto, S., Sato, T., Yotsuyanagi, T., Fujimiya, M., & Chikenji, T. S. (2022). Altered regulation of mesenchymal cell senescence in adipose tissue promotes pathological changes associated with diabetic wound healing. *Communications Biology*, 5(1), 310. <https://doi.org/10.1038/s42003-022-03266-3>
- Kobayashi, T., & Kageyama, R. (2014). Expression dynamics and functions of Hes factors in development and diseases. *Current Topics in Developmental Biology*, 110, 263–283. <https://doi.org/10.1016/B978-0-12-405943-6.00007-5>
- Le Pelletier, L., Mantecon, M., Gorwood, J., Auclair, M., Foresti, R., Motterlini, R., Laforge, M., Atlan, M., Feve, B., Capeau, J., Lagathu, C., & Bereziat, V. (2021). Metformin alleviates stress-induced cellular senescence of aging human adipose stromal cells and the ensuing adipocyte dysfunction. *eLife*, 10, e62635. <https://doi.org/10.7554/eLife.62635>
- Lopez-Antona, I., Contreras-Jurado, C., Luque-Martin, L., Carpintero-Leyva, A., Gonzalez-Mendez, P., & Palmero, I. (2022). Dynamic regulation of myofibroblast phenotype in cellular senescence. *Aging Cell*, 21(4), e13580. <https://doi.org/10.1111/acer.13580>
- Minamino, T., Orimo, M., Shimizu, I., Kunieda, T., Yokoyama, M., Ito, T., Nojima, A., Nabetani, A., Oike, Y., Matsubara, H., Ishikawa, F., & Komuro, I. (2009). A crucial role for adipose tissue p53 in the regulation of insulin resistance. *Nature Medicine*, 15(9), 1082–1087.
- Nandagopal, N., Santat, L. A., LeBon, L., Sprinzak, D., Bronner, M. E., & Elowitz, M. B. (2018). Dynamic ligand discrimination in the Notch signaling pathway. *Cell*, 172(4), 869–880 e819. <https://doi.org/10.1016/j.cell.2018.01.002>
- Ogrodnik, M., Miwa, S., Tchkonja, T., Tiniakos, D., Wilson, C. L., Lahat, A., Day, C. P., Burt, A., Palmer, A., Anstee, Q. M., Grellscheid, S. N., Hoeijmakers, J. H. J., Barnhoorn, S., Mann, D. A., Bird, T. G., Vermeij, W. P., Kirkland, J. L., Passos, J. F., von Zglinicki, T., & Jurk, D. (2017). Cellular senescence drives age-dependent hepatic steatosis. *Nature Communications*, 8, 15691. <https://doi.org/10.1038/ncomms15691>
- Palmer, A. K., Gustafson, B., Kirkland, J. L., & Smith, U. (2019). Cellular senescence: at the nexus between ageing and diabetes. *Diabetologia*, 62(10), 1835–1841. <https://doi.org/10.1007/s00125-019-4934-x>
- Palmer, A. K., Xu, M., Zhu, Y., Pirtskhalava, T., Weivoda, M. M., Hachfeld, C. M., Prata, L. G., van Dijk, T. H., Verkade, E., Casaclang-Verzosa, G., Johnson, K. O., Cubro, H., Doornebal, E. J., Ogrodnik, M., Jurk, D., Jensen, M. D., Chini, E. N., Miller, J. D., Matveyenko, A., ... Kirkland, J. L. (2019). Targeting senescent cells alleviates obesity-induced metabolic dysfunction. *Aging Cell*, 18(3), e12950. <https://doi.org/10.1111/acer.12950>
- Pini, M., Czibik, G., Sawaki, D., Mezdari, Z., Braud, L., Delmont, T., Mercedes, R., Martel, C., Buron, N., Marcelin, G., Borgne-Sanchez, A., Foresti, R., Motterlini, R., Henegar, C., & Derumeaux, G. (2021). Adipose tissue senescence is mediated by increased ATP content after a short-term high-fat diet exposure. *Aging Cell*, 20(8), e13421. <https://doi.org/10.1111/acer.13421>
- Rabhi, N., Desevin, K., Belkina, A. C., Tilston-Lunel, A., Varelas, X., Layne, M. D., & Farmer, S. R. (2022). Obesity-induced senescent macrophages activate a fibrotic transcriptional program in adipocyte progenitors. *Life Science Alliance*, 5(5), e202101286. <https://doi.org/10.26508/lsa.202101286>
- Ramachandran, P., Dobie, R., Wilson-Kanamori, J. R., Dora, E. F., Henderson, B. E. P., Luu, N. T., Portman, J. R., Matchett, K. P., Brice, M., Marwick, J. A., Taylor, R. S., Efreмова, M., Vento-Tormo, R., Carragher, N. O., Kendall, T. J., Fallowfield, J. A., Harrison, E. M., Mole, D. J., Wigmore, S. J., ... Henderson, N. C. (2019). Resolving the fibrotic niche of human liver cirrhosis at single-cell level. *Nature*, 575(7783), 512–518. <https://doi.org/10.1038/s41586-019-1631-3>
- Rouault, C., Marcelin, G., Adriouch, S., Rose, C., Genser, L., Ambrosini, M., Bichet, J. C., Zhang, Y., Marquet, F., Aron-Wisniewsky, J., Poitou, C., Andre, S., Derumeaux, G., Guerre-Millo, M., & Clement, K. (2021). Senescence-associated beta-galactosidase in subcutaneous adipose tissue associates with altered glycaemic status and truncal fat in severe obesity. *Diabetologia*, 64(1), 240–254. <https://doi.org/10.1007/s00125-020-05307-0>
- Saul, D., Kosinsky, R. L., Atkinson, E. J., Doolittle, M. L., Zhang, X., LeBrasseur, N. K., Pignolo, R. J., Robbins, P. D., Niedernhofer, L. J., Ikeno, Y., Jurk, D., Passos, J. F., Hickson, L. J., Xue, A., Monroe, D. G., Tchkonja, T., Kirkland, J. L., Farr, J. N., & Khosla, S. (2022). A new gene set identifies senescent cells and predicts senescence-associated pathways across tissues. *Nature Communications*, 13(1), 4827. <https://doi.org/10.1038/s41467-022-32552-1>
- Sawaki, D., Czibik, G., Pini, M., Ternacle, J., Suffee, N., Mercedes, R., Marcelin, G., Surenaud, M., Marcos, E., Gual, P., Clement, K., Hue, S., Adnot, S., Hatem, S. N., Tsuchimochi, I., Yoshimitsu, T., Henegar, C., & Derumeaux, G. (2018). Visceral adipose tissue drives cardiac aging through modulation of fibroblast senescence by Osteopontin production. *Circulation*, 138(8), 809–822. <https://doi.org/10.1161/CIRCULATIONAHA.117.031358>
- Selman, M., & Pardo, A. (2021). Fibroageing: An ageing pathological feature driven by dysregulated extracellular matrix-cell mechanobiology. *Ageing Research Reviews*, 70, 101393. <https://doi.org/10.1016/j.arr.2021.101393>
- Shan, T., Liu, J., Wu, W., Xu, Z., & Wang, Y. (2017). Roles of Notch signaling in adipocyte progenitor cells and mature adipocytes. *Journal of Cellular Physiology*, 232(6), 1258–1261. <https://doi.org/10.1002/jcp.25697>
- Shay, J. W. (2016). Role of telomeres and telomerase in aging and cancer. *Cancer Discovery*, 6(6), 584–593. <https://doi.org/10.1158/2159-8290.CD-16-0062>
- Spalding, K. L., Arner, E., Westermark, P. O., Bernard, S., Buchholz, B. A., Bergmann, O., Blomqvist, L., Hoffstedt, J., Naslund, E., Britton, T., Concha, H., Hassan, M., Ryden, M., Frisen, J., & Arner, P. (2008). Dynamics of fat cell turnover in humans. *Nature*, 453(7196), 783–787.
- Tchkonja, T., Giorgadze, N., Pirtskhalava, T., Thomou, T., DePonte, M., Koo, A., Forse, R. A., Chinnappan, D., Martin-Ruiz, C., von Zglinicki, T., & Kirkland, J. L. (2006). Fat depot-specific characteristics are retained in strains derived from single human preadipocytes. *Diabetes*, 55(9), 2571–2578.
- Teo, Y. V., Rattanavirotkul, N., Olova, N., Salzano, A., Quintanilla, A., Tarrats, N., Kiourtis, C., Muller, M., Green, A. R., Adams, P. D., Acosta, J. C., Bird, T. G., Kirschner, K., Neretti, N., & Chandra, T. (2019). Notch signaling mediates secondary senescence. *Cell Reports*, 27(4), 997–1007 e1005. <https://doi.org/10.1016/j.celrep.2019.03.104Trim>
- Trim, W., Turner, J. E., & Thompson, D. (2018). Parallels in Immunometabolic adipose tissue dysfunction with ageing and



- obesity. *Frontiers in Immunology*, 9, 169. <https://doi.org/10.3389/fimmu.2018.00169>
- van Deursen, J. M. (2014). The role of senescent cells in ageing. *Nature*, 509(7501), 439–446. <https://doi.org/10.1038/nature13193>
- Vila, I. K., Badin, P. M., Marques, M. A., Monbrun, L., Lefort, C., Mir, L., Louche, K., Bourlier, V., Roussel, B., Gui, P., Grober, J., Stich, V., Rossmeislova, L., Zakaroff-Girard, A., Bouloumie, A., Viguerie, N., Moro, C., Tavernier, G., & Langin, D. (2014). Immune cell toll-like receptor 4 mediates the development of obesity- and endotoxemia-associated adipose tissue fibrosis. *Cell Reports*, 7(4), 1116–1129. <https://doi.org/10.1016/j.celrep.2014.03.062>
- Villaret, A., Galitzky, J., Decaunes, P., Esteve, D., Marques, M. A., Senegues, C., Chiotasso, P., Tchkonina, T., Lafontan, M., Kirkland, J. L., & Bouloumie, A. (2010). Adipose tissue endothelial cells from obese human subjects: Differences among depots in angiogenic, metabolic, and inflammatory gene expression and cellular senescence. *Diabetes*, 59(11), 2755–2763. <https://doi.org/10.2337/db10-0398>
- Wang, L., Wang, B., Gasek, N. S., Zhou, Y., Cohn, R. L., Martin, D. E., Zuo, W., Flynn, W. F., Guo, C., Jellison, E. R., Kim, T., Langhi Prata, L. G. P., Palmer, A. K., Li, M., Inman, C. L., Barber, L. S., Al-Naggar, I. M. A., Zhou, Y., Du, W., Kshitiz, Kuchel, G. A., Meves, A., Tchkonina, T., Kirkland, J. L., Robson, P., & Xu, M. (2022). Targeting p21(Cip1) highly expressing cells in adipose tissue alleviates insulin resistance in obesity. *Cell Metabolism*, 34(1), 186. doi:<https://doi.org/10.1016/j.cmet.2021.12.014>
- Xu, M., Palmer, A. K., Ding, H., Weivoda, M. M., Pirtskhalava, T., White, T. A., Sepe, A., Johnson, K. O., Stout, M. B., Giorgadze, N., Jensen, M. D., LeBrasseur, N. K., Tchkonina, T., & Kirkland, J. L. (2015). Targeting senescent cells enhances adipogenesis and metabolic function in old age. *eLife*, 4, e12997. <https://doi.org/10.7554/eLife.12997>
- Xu, M., Tchkonina, T., Ding, H., Ogrodnik, M., Lubbers, E. R., Pirtskhalava, T., White, T. A., Johnson, K. O., Stout, M. B., Mezera, V., Giorgadze, N., Jensen, M. D., LeBrasseur, N. K., & Kirkland, J. L. (2015). JAK inhibition alleviates the cellular senescence-associated secretory phenotype and frailty in old age. *Proceedings of the National Academy of Sciences of the United States of America*, 112(46), E6301–E6310. <https://doi.org/10.1073/pnas.1515386112>
- Zhou, G., Soufan, O., Ewald, J., Hancock, R. E. W., Basu, N., & Xia, J. (2019). NetworkAnalyst 3.0: A visual analytics platform for comprehensive gene expression profiling and meta-analysis. *Nucleic Acids Research*, 47(W1), W234–W241. <https://doi.org/10.1093/nar/gkz240>

SUPPORTING INFORMATION

Additional supporting information can be found online in the Supporting Information section at the end of this article.

How to cite this article: Boulet, N., Briot, A., Jargaud, V., Estève, D., Rémaury, A., Belles, C., Viana, P., Fontaine, J., Murphy, L., Déon, C., Guillemot, M., Pech, C., Veeranagouda, Y., Didier, M., Decaunes, P., Mouisel, E., Carpéné, C., Iacovoni, J. S., Zakaroff-Girard, A. ... Bouloumié, A. (2023). Notch activation shifts the fate decision of senescent progenitors toward myofibroblastogenesis in human adipose tissue. *Aging Cell*, 00, e13776. <https://doi.org/10.1111/accel.13776>