



HAL
open science

Therapeutic Hypothermia Reduces Peritoneal Dialysis Induced Myocardial Blood Flow Heterogeneity and Arrhythmia

S. R. Kharche, S. Lemoine, T. Tamasi, L. Hur, A. So, C. W. McIntyre

► **To cite this version:**

S. R. Kharche, S. Lemoine, T. Tamasi, L. Hur, A. So, et al.. Therapeutic Hypothermia Reduces Peritoneal Dialysis Induced Myocardial Blood Flow Heterogeneity and Arrhythmia. *Frontiers in Medicine*, 2021, 8, pp.700824. 10.3389/fmed.2021.700824 . inserm-03582079

HAL Id: inserm-03582079

<https://inserm.hal.science/inserm-03582079>

Submitted on 21 Feb 2022

HAL is a multi-disciplinary open access archive for the deposit and dissemination of scientific research documents, whether they are published or not. The documents may come from teaching and research institutions in France or abroad, or from public or private research centers.

L'archive ouverte pluridisciplinaire **HAL**, est destinée au dépôt et à la diffusion de documents scientifiques de niveau recherche, publiés ou non, émanant des établissements d'enseignement et de recherche français ou étrangers, des laboratoires publics ou privés.



Therapeutic Hypothermia Reduces Peritoneal Dialysis Induced Myocardial Blood Flow Heterogeneity and Arrhythmia

Sanjay R. Kharche^{1,2*}, Sandrine Lemoine¹, Tanya Tamasi¹, Lisa Hur¹, Aaron So^{2,3} and Christopher W. McIntyre^{1,2*}

¹ Kidney Clinical Research Unit, Lawson's Health Research Institute, Victoria Hospital, London, ON, Canada, ² Department of Medical Biophysics, Schulich School of Medicine and Dentistry, University of Western Ontario, London, ON, Canada, ³ Imaging Program, Lawson Health Research Institute, London, ON, Canada

OPEN ACCESS

Edited by:

Pasqual Barretti,
São Paulo State University, Brazil

Reviewed by:

Mark Dominik Alscher,
Robert Bosch Hospital, Germany
Jong Hyun Jhee,
Yonsei University, South Korea

*Correspondence:

Christopher W. McIntyre
cmcint48@uwo.ca
Sanjay R. Kharche
Sanjay.Kharche@lhsc.on.ca

Specialty section:

This article was submitted to
Nephrology,
a section of the journal
Frontiers in Medicine

Received: 26 April 2021

Accepted: 30 June 2021

Published: 30 July 2021

Citation:

Kharche SR, Lemoine S, Tamasi T, Hur L, So A and McIntyre CW (2021) Therapeutic Hypothermia Reduces Peritoneal Dialysis Induced Myocardial Blood Flow Heterogeneity and Arrhythmia. *Front. Med.* 8:700824. doi: 10.3389/fmed.2021.700824

Background: Moderate therapeutic hypothermia (TH) is a well-recognized cardio-protective strategy. The instillation of fluid into the peritoneum provides an opportunity to deliver moderate hypothermia as primary prevention against cardiovascular events. We aimed to investigate both cardiac perfusion consequences (overall blood flow and detailed assessment of perfusion heterogeneity) and subsequently simulate the associated arrhythmic risk for patients undergoing peritoneal dialysis (PD) induced TH.

Methods: Patients underwent high resolution myocardial perfusion scanning using high resolution 256 slice CT scanning, at rest and with adenosine stress. The first visit using the patient's usual PD regimen, on the second visit the same regime was utilized but with cooled peritoneal dialysate at 32°C. Myocardial blood flow (MBF) was quantified from generated perfusion maps, reconstructed in 3D. MBF heterogeneity was assessed by fractal dimension (FD) measurement on the 3D left ventricular reconstruction. Arrhythmogenicity was quantified from a sophisticated computational simulation using a multi-scale human 3D ventricle wedge electrophysiological computational model.

Results: We studied 7 PD patients, mean age of 60 ± 7 and mean vintage dialysis of 23.6 ± 17.6 months. There were no significant difference in overall segmental MBF between normothermic condition (NT) and TH. MBF heterogeneity was significantly decreased (-14% , $p = 0.03$) at rest and after stress (-14% , $p = 0.03$) when cooling was applied. Computational simulation showed that TH allowed a normalization of action potential, QT duration and T wave.

Conclusion: TH-PD results in moderate hypothermia leading to a reduction in perfusion heterogeneity and simulated risk of non-terminating malignant ventricular arrhythmias.

Keywords: peritoneal dialysis, therapeutic hypothermia, computed tomography imaging, computational cardiology, arrhythmia

INTRODUCTION

Patients receiving peritoneal dialysis (PD) are faced with the equivalent survival challenges as patients treated with hemodialysis (HD), both in terms of the rate and dominance of cardiac sudden death as the main modality of cardiovascular mortality (1, 2). Beyond classic atherosclerotic disease (most common factor in the non-kidney disease population), very high mortality rates in PD patients are a result of the combination of additional factors such as metabolic stress, vascular calcification, myocardial fibrosis and endothelial dysfunction. At present there are no therapies identified able to provide primary prevention of sudden cardiac death events in patients receiving dialysis. Conventional therapies developed within the general population (such as statins and antiplatelet therapies) are ineffective in reducing cardiovascular mortality in either PD or HD patients. Furthermore, the risk/benefit considerations of device-based interventions are rather different in patients receiving both forms of dialysis (3–5) and currently not recommended as primary prevention in patients receiving PD (6).

Alteration of microcirculation plays a fundamental role in development of these cardiovascular outcomes. Microcirculatory function is important in determining the overall blood flow in the myocardium (especially when under demand) but it is increasingly recognized that the pattern of perfusion may be important in determining the underlying electrophysiological properties of cardiac muscle. The microcirculation of the normal myocardium is heterogeneous during rest. This heterogeneity of perfusion is an inherent and functionally significant property of microvascular network. However, when myocardial blood flow increases, oxygen extraction efficacy can be improved by homogenizing capillary flow. An increase of heterogeneity of myocardial perfusion, *per se*, is a marker of coronary endothelial dysfunction and is associated with coronary atherosclerosis, independently from traditional regional myocardial perfusion defects (7). Lu and co-workers demonstrated increased heterogeneity of stress myocardial blood flow (MBF) in hypertrophic cardiomyopathy patients is associated with an increased risk of ventricular arrhythmias (8). Cellular level experiments reveal perfusion heterogeneity disrupts the passage of myocardial depolarization fragmenting the passage of the electrical activity through the heart and resulting in ventricular re-entrant circuits (9). Increasingly heterogenous myocardial perfusion at the microvascular level has been proposed as a mechanism in arrhythmia and therefore of sudden cardiac death.

Therapeutic induction of mild hypothermia in animal studies has been shown to improve myocardial microvascular integrity under conditions of stress (10). Reduction of temperature by using cooled dialysis is a promising cardio-protective intervention in HD patients (11–13) and is currently being tested in a large-scale randomized controlled trial of 14,000 patients (MY TEMP study- NCT02628366) (14). In PD, the peritoneum provides a large surface area for thermal transfer, can be performed at night; providing potential coverage a substantial part of the 24 h period and in particular the circadian vulnerability to sudden cardiac death.

We hypothesized that moderate therapeutic hypothermia (TH) might have the potential to provide primary cardio-protection in PD patients by effecting overall myocardial blood flow, ischemic tolerability and perfusion heterogeneity influencing cardiac arrhythmic potential. The aim of this proof of principal study was to investigate both cardiac perfusion consequences (overall blood flow and detailed assessment of perfusion heterogeneity) and subsequently simulate the associated arrhythmic risk for patients undergoing PD induced TH.

METHODS

Patients

Seven participants were recruited from the Renal Program at London Health Sciences Center. Inclusion criteria were patients receiving daily PD treatment at home, older than 18 years and residual renal function ≤ 750 mL per 24-h period. Exclusion criteria were previous adverse reaction to intravenous contrast, allergy to adenosine, exposure to PD for <90 days prior to recruitment, ongoing spontaneous bacterial peritonitis (SBP), severe heart failure (New York Heart Association grade IV), cardiac transplant recipients and mental incapacity to consent. All patients gave written informed consent. This study was conducted according to the principles of the Declaration of Helsinki, with appropriate ethics committee approval (CRIC: R-16-012; REB approval number: 107280, NCT NCT04394780).

Study Design

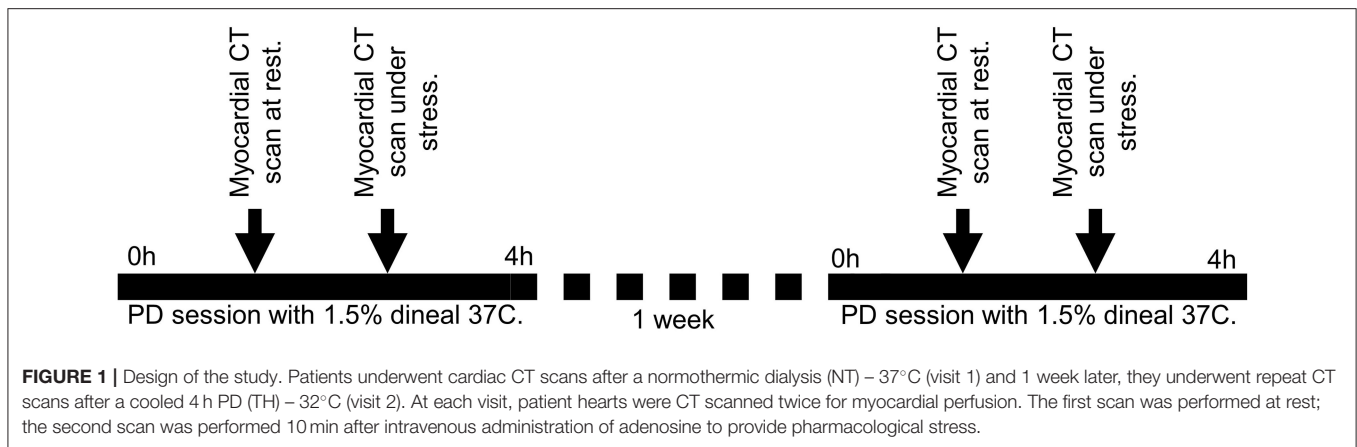
We conducted a single center pilot interventional study (see **Figure 1**). Patients underwent cardiac CT scans after a normothermic dialysis (NT) (visit 1) and 1 week later, they underwent repeat CT scans after a cooled 4 h PD (TH) (visit 2). At each visit, patient hearts were CT scanned twice for myocardial perfusion. The first scan was performed at rest; the second scan was performed 10 min after intravenous administration of adenosine to provide pharmacological stress. Adenosine was intravenously administered at 140 mcg/kg/min with an infusion pump, before stress myocardial perfusion acquisition was taken at 3 min into adenosine infusion.

The NT dialysate was warmed to 37°C and the cooled dialysate temperature at 32°C. Dialysate temperature was achieved using a dialysate warming cabinet (Enthermics, Wisconsin, USA). The patient's oral temperature was monitored continuously during the PD session as an indicator of core temperature.

Systemic blood pressure was recorded during each PD session (**Supplementary Figure 1**). Patients' characteristics, medical history and medication were recorded on visit 1. Between the two visits (no more than 2 weeks), patients continued their clinical PD prescriptions and associated medications. Patient blood samples were obtained before and after each PD session on each visit.

Cardiac CT Imaging Protocol

All studies used a 256-row GE Healthcare Revolution CT scanner with a prospective ECG gating acquisition protocol



in a supine patient position: 22–25 axial scans covering 8 cm of the heart triggered at every 1–2 mid-diastole (75% R-R interval) at 100 kV tube voltage, 100 mA tube current and 280 ms gantry rotation speed with breath-hold. Dynamic contrast-enhanced (DCE) images at 5 mm slice were generated using partial-scan data collected from 180° + fan beam angle with 100% adaptive statistical iterative reconstruction (ASiR-v, GE Healthcare).

Myocardial Perfusion Maps

Myocardial perfusion maps were performed based on a model-based deconvolution approach described previously (15). Each slice of the myocardial perfusion maps was sub-divided into six standard myocardial segments in approximate horizontal long-axis according to the American Heart Association segmentation model (16) to remove non-myocardial tissue signals. The left ventricle (LV) was manually extracted (or segmented) from the myocardial BF maps to reconstruct 3D LV blood flow (BF) spatial distributions. The reconstruction was stored in a structured array of 0.5 (X) × 0.5 (Y) × 5 (Z) mm³ array as previously described (17) to give the appropriate high spatial resolution.

BF heterogeneity

BF heterogeneity was assessed by fractal dimension (FD) measurement on a 3D LV reconstruction as previously described (17, 18). Fractal dimensions (FD) is a strong measure of BF heterogeneity, where $BF = 1.5$ means a complete heterogeneity and $BF = 1$ a homogeneity in perfusion.

Myocardial Perfusion Reserve

Myocardial perfusion reserve (MPR) was calculated as the ratio of the mean stress to rest myocardial blood flow value.

In silico Electrophysiological Computational Model

Cell Model

We adapted for this study the cardiomyocyte cell model developed by Ten Tusscher et al. (19). It allows simulation of electrical excitations in the human ventricle's epicardial, mid-myocardial, and endocardial regions based on key ion

current parameter fine tuning (13). The cell level effects of TH were implemented based on experimental data and are fully described as **Supplementary Material**. This robust human ventricle cardiomyocyte cell was incorporated into novel a 3D transmural human ventricle wedge as described below.

3D Transmural Human Ventricle Wedge

We developed a multi-scale *in silico* human ventricle electrophysiological model to predict electrical modification of heart through a simulated ECG. Based on our experimental CT data, we developed a 3D slab representing a large part of the left human ventricle where a virtual ECG electrode was placed 3 cm outside of the wedge as shown in **Supplementary Figure 1**. The electrode permitted calculation of the pseudo-ECG based on electrical activity in the wedge. The wedge was used to simulate effects of PD on ventricular ECG and activation patterns and to emphasize modifications of ECG provided by hypothermia. The detailed method is provided in **Supplementary Material**.

Statistical Analysis and Sample Size Considerations

Findings from this study were expected to be essentially descriptive and provide essential preliminary data of the existence of biological effect to justify further appropriately powered studies. Given the enormous granularity of data provided by the multiple scans of each patient (with perfusion data available down to a resolution of only a few millimeters), intense complexity of performing these studies and limitations on recruitment brought about by the challenges inherent we selected a convenience sample approach of seven subjects. All descriptive and basic statistical analysis was performed using Prism. Descriptive statistics for continuous variables were tested for normality and summarized using mean ± SD. Discrete variables were summarized as proportions. Median (min-max) BF and heterogeneity were compared between NT and TH using a non-parametric paired test (Wilcoxon test). Statistical significance was defined as $p < 0.05$. Computational methods are described above or in **Supplementary Material**. No data existed to provide any guidance on power calculation.

TABLE 1 | Patients' characteristics: anthropometrics values, medical history and medications.

	Before NT PD	After NT PD	Before TH PD	After TH PD
Sodium (mmol/L)	137 ± 3.9	134 ± 3.4	138 ± 3.5	134 ± 3.6
Potassium (mmol/L)	4.2 ± 0.8	4.3 ± 0.9	4.1 ± 0.7	4.1 ± 0.6
Chloride (mmol/L)	95 ± 4	94 ± 4	95 ± 3	94 ± 3
Bicarbonates (mmol/L)	24.1 ± 2.8	23.7 ± 2.5	25.3 ± 2.9	25.6 ± 2.1
Creatinine (umol/L)	872 ± 268	871 ± 279	821 ± 323	801 ± 315
Albumin (g/L)	34.9 ± 4.2	30.9 ± 3.8	35 ± 3.5	31 ± 12.2
Calcium (mmol/L)	2.2 ± 0.9	2.1 ± 0.2	2.2 ± 0.2	2.1 ± 0.1
Phosphate (mmol/L)	2.0 ± 0.4	1.9 ± 0.3	1.9 ± 0.4	1.76 ± 0.3
Glucose (mmol/L)	5.3 ± 1.3	5.1 ± 1.3	6.4 ± 2.6	5.8 ± 1.9
Troponine-T(ng/L) (High-sensitivity)	74.6 ± 43.5	68.6 ± 38	80.5 ± 57	55 ± 35
CRP (mg/L) (High sensitivity)	4.5 ± 3.2	4.2 ± 2.9	5.4 ± 3.6	4.2 ± 2.9

Values are expressed as mean ± Sd or number (%).

TABLE 2 | Bloodwork collections before and after peritoneal dialysis PD for normothermic (NT) and therapeutic hypothermia (TH) conditions.

Characteristic	
Age (years)	60 ± 7
Female (%)	4 (57)
Weight (Kg)	77 ± 23
Height (cm)	163 ± 11
BMI (kg/m ²)	29.2 ± 6.4
Urinary residual Volume (mL)	400 ± 300
Medical history	
PD vintage (months)	23.6 ± 17.6
Ischemic heart disease (%)	1 (14)
Current or ex-smoker (%)	2 (29)
Peripheral vascular disease (%)	1 (14)
Medication	
Treated hypertension (%)	6 (86)
RAAS antagonist (%)	5 (71)
β-blocker (%)	4 (43)
Statin use (%)	5 (71)
Phosphate binder <i>Calcium containing</i> (%)	5 (71)
Phosphate binder <i>Non calcium</i> (%)	1 (14)
Erythropoiesis-stimulating agent (%)	6 (86)
Vitamin D analog (%)	4 (43)

Results are expressed as mean ± standard deviations. Comparisons between pre PD with NT and HT or post PD with NT and HT were performed with *t* paired test. CRP (C-reactive protein).

RESULTS

Patient Characteristics

Mean age was 60 ± 7 years, 57% female. Mean PD vintage was 23.6 ± 17.6 months. BMI was 29.2 ± 6.4 kg/m², urinary residual volume was 400 ± 300 mL. Only 1 patient had known ischemic heart disease. Documented causes of kidney disease included diabetes and/or hypertension for 2 patients, one for glomerulonephritis, one for interstitial nephritis and 3 patients had hereditary nephropathy. All characteristics are summarized

TABLE 3 | Peritoneal dialysis characteristics.

Patient number	APD/CAPD	Number of exchange	Dialysate
Patient 1	APD	3	Alternation of Dianeal
Patient 2	APD-NIPD	3	Dianeal 2.5%
Patient 3	CAPD	4	Dianeal 1.5% and Extraneal 7.5%
Patient 4	APD	3	Alternation of Dianeal
Patient 5	APD-IPD	3	Alternation of Dianeal and extraneal
Patient 6	APD-IPD	3	Alternation of Dianeal and extraneal
Patient 7	APD	3	Alternation of Dianeal and extraneal

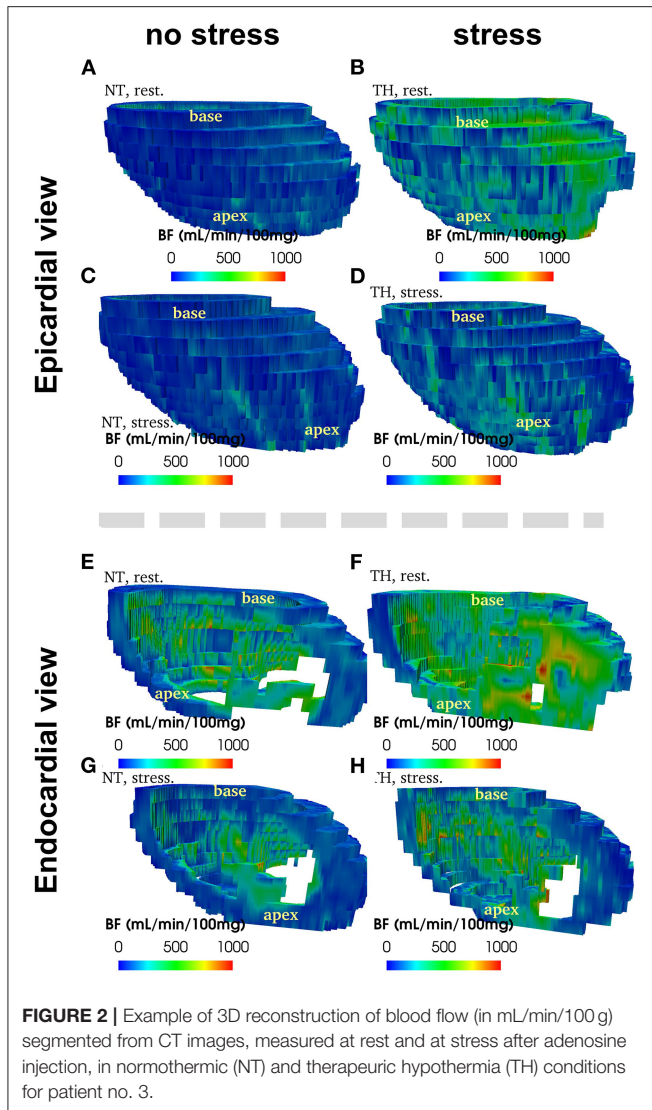
APD, automated peritoneal dialysis; CAPD, continuous ambulatory peritoneal dialysis; IPD, intermittent peritoneal dialysis; NIPD, nocturnal intermittent peritoneal dialysis.

in **Table 1**. We found no difference between bloodwork results in the patients between their 2 visits. Six patients were in automated peritoneal dialysis and 1 in continuous ambulatory peritoneal dialysis. Blood test results in **Table 2**. Peritoneal dialysis characteristics are described in **Table 3**.

Temperature and Hemodynamics Monitoring

Cooled dialysate was tolerated well by all patients. No systemic symptoms of cold or localized drain pain were reported, despite being actively interrogated for. Median core body temperature during the PD session was not different between NT [36.5 (35.7–36.6)] and TH [36.5 vs. 36.5 (36.1–36.8°C, *p* = 0.578)] (**Supplementary Figure 3A**).

Median MAPs were significantly higher in TH group (92 mmHg in NT vs. 110 mmHg in TH, *p* = 0.04) during PD sessions (**Supplementary Figure 3B**). Hemodynamics remained stable during the PD session for the NT and the TH group. Median



heart rate (HR) was not different between NT and TH group [69 vs. 62, $p = 0.84$] respectively (Supplementary Figure 3C).

Gross Myocardial Blood flow and Myocardial Reserve

Figure 2 provide an example of 3D reconstruction of left ventricle from where BF and fractal analysis was measured. We showed no statistical difference in overall or segmental myocardial BF between NT and TH at rest [133 (116–175) vs. 125 (88–149), $p = 0.15$, respectively] or after stress [271 (229–320) vs. 246 (200–236), $p = 0.12$, respectively] (Figures 3A,B). We found no significant difference overall or segmentally for myocardial reserve mobilization between NT and TH (189 vs. 176%, $p = 0.06$) (Figure 3C).

Blood Flow Heterogeneity

Heterogeneity was significantly decreased (-14% , $p = 0.03$) without pharmacological stress in the TH group compared to the NT group. We showed also a further significant decrease of heterogeneity during the stress (-14% , $p = 0.03$) in the TH compared to the NT group (Figures 4A,B). There was significant decrease of heterogeneity between rest and stress only in the TH group (-6% , $p = 0.04$) (Figures 4C,D).

Simulated Electrophysiological Effects of Temperature on ECG and Tachycardia Persistence

Effects of Cooling on Cardiomyocytes

First, we used a simulation model of cardiomyocytes previously described. Simulated cardiac action potential are shown in Figure 5. Compared to comparator simulated from previous publications, simulations from this present study showed PD significantly abbreviated cardiomyocyte action potential durations. We were able to show that TH allowed the prolongation of action potential (AP) duration for both comparator and PD conditions.

Simulated Action of TH on ECG

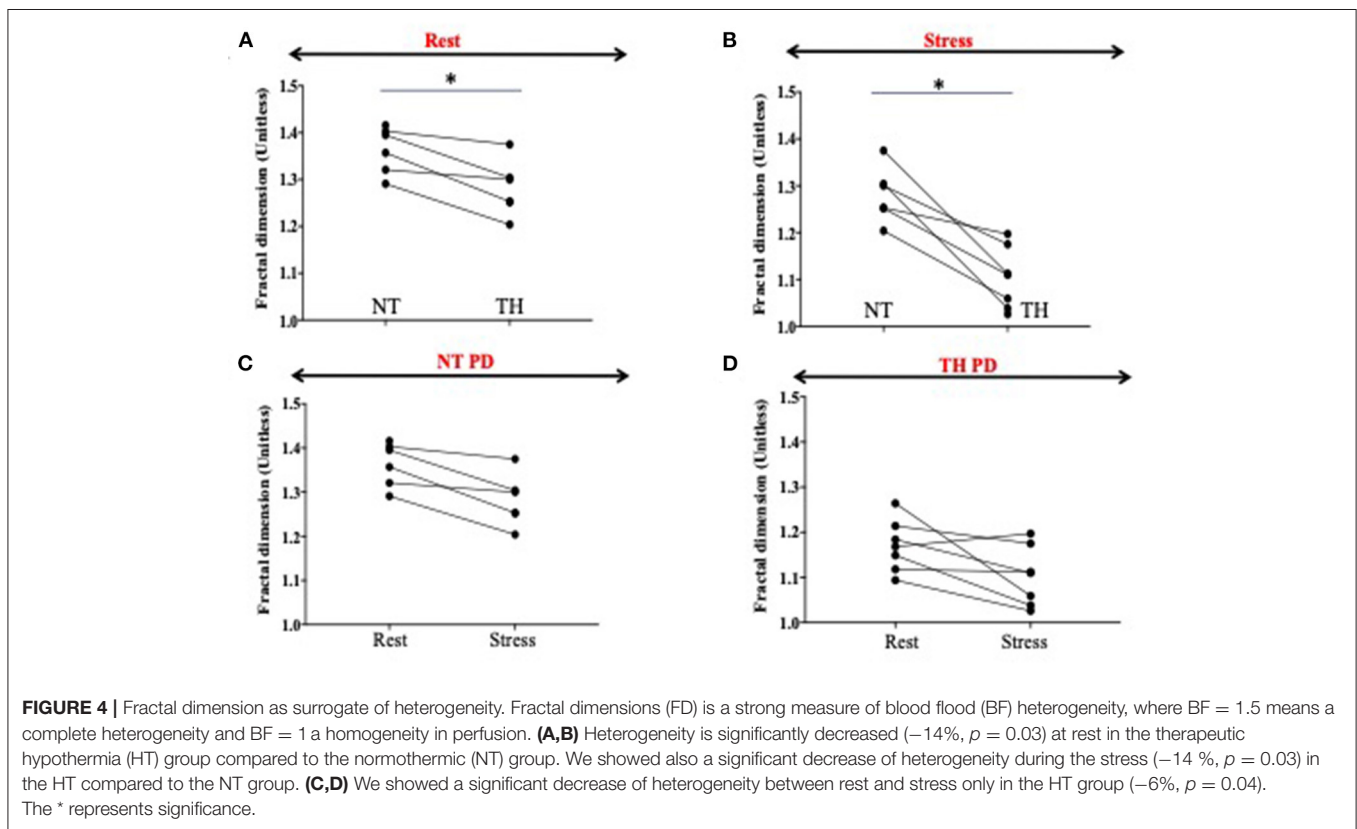
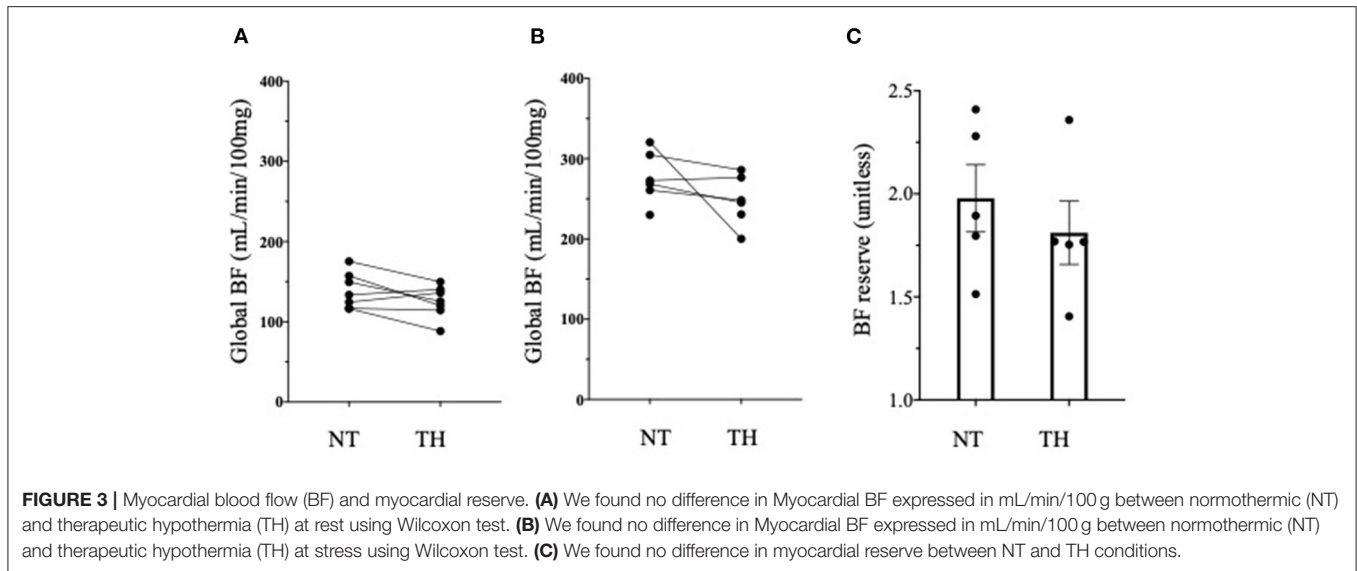
With the simulation of the 3D wedge model, we were able to reproduce a ventricular part of ECG. Supplementary Figure 4 displays a representative frame showing transmural electrical activation in the 3D wedge model. Under NT conditions, the ECG's T wave became inverted as well as abbreviating ST interval. Under TH conditions, ECG simulation showed that T wave inversion became less severe. TH prolonged the ST interval as compared to NT conditions, however moving it toward the control case (Supplementary Figure 4).

DISCUSSION

This study is the first evaluation of the potential cardiovascular effects of moderate hypothermia in PD patients. We report the effects of dialysate cooling on myocardial blood flow, both at rest and under pharmacological stress, as have demonstrated (through advanced computational modeling of arrhythmia formation) that the observed patterns of myocardial perfusion seen with cooling may provide primary protection against cardiac sudden death.

Feasibility

Whereas, cooling has already been performed in HD patient, it is the first time that cooled dialysate has been used in PD to show impact on microcirculation. Until now, PD cooling was used as a means to profoundly cool experimental animals. This pilot study allows to show that modest cooling of PD dialysate is easy to perform and very well-tolerated. The cooling protocol was simple to deliver and could be incorporated into current delivery systems, cost-free. In contrast with HD, where significant thermal transfer occurs due to the large volume of dialysate which runs in contact with blood over a dialysis

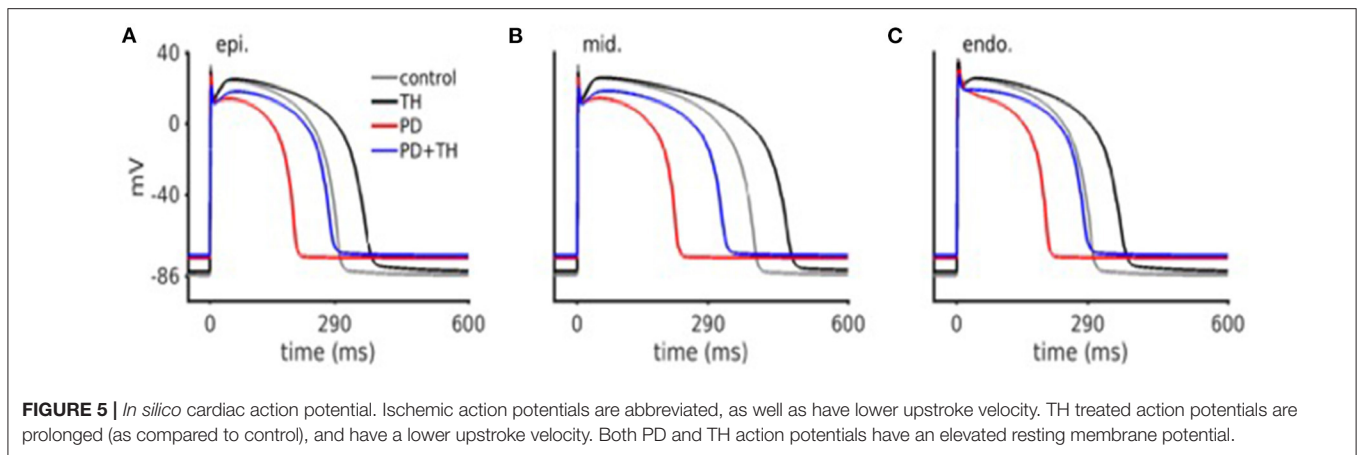


treatment, body core temperature seems to be less impacted by the modest reductions in PD fluid temperature we studied. This was also well-tolerated, with no patients reporting they felt cold.

Myocardial Perfusion and Heterogeneity

Previous studies have demonstrated that HD is characterized by a 30% reduction in regional myocardial blood flow (MBF) (11).

Patients in these studies also exhibited PD-induced reductions in MBF despite not having significant occlusive coronary artery disease, suggesting that these changes occur as a result of the decreased coronary flow reserve and microcirculatory effects. While the cardiac effects of HD are well-established, those of PD have not yet been fully studied. We know that PD does influence homeostatic vascular mechanisms (20). Boon et al. (21) showed increased blood pressure during the



instillation phases of peritoneal dialysis. More recent studies have shown a hypertensive effect as a direct response to the hyperglycemic, hyperinsulinemic state induced by high glucose concentration containing PD solutions (22). Others investigators have found PD volume related increases in carotid diastolic pressures, and varying carotid baroreceptor sensitivities with differentially buffered PD solutions (23). Over hydration may also alter endothelial function, with reports of an independent correlation between indices of volume status and arterial flow mediated dilatation (24). Our study provides further evidence of the microcirculation dysfunction in PD patients. In our study, myocardial perfusion are quite low and comparable to myocardial perfusion measured during a HD session (11). These results are consistent with previous study where authors showed a same increase of CRF by around 189% in their dialysis patients group (25).

Beyond overall and segmental myocardial perfusion, myocardial heterogeneity has never been studied before in PD patients. Autopsy and experimental studies have demonstrate a reduction in myocardial capillary supply in ESRD patients (26). As previously described, myocardial heterogeneity is a surrogate of endothelial dysfunction and bring additional information on the patients' microcirculation status.

Study of the impact of cooling in PD on MBF and its heterogeneity has not been previously attempted. This study has highlighted that heterogeneity decreased after exposure to cooler dialysate and decreased further under conditions of pharmacological stress. Cooling allowed to significantly more homogenized perfusion. Further, there is increasing basic science evidence that spatial BF heterogeneity in the heart is reduced as the total BF entering the asymmetric coronary arterial structure reduces (27). Therefore, cooling dialysate could be an easy way to protect heart from capillaries heterogeneity and potentially provide cardio-protection.

Arrhythmia

It is well-known that temperature affects many characteristics of the action potential (AP) wave, especially amplitude, duration, conduction velocity, dispersion of repolarization (28). Our results are consistent with previous reports (29, 30). Indeed,

our simulated AP model allows to confirm that TH itself induces an AP duration prolongation. In accordance with actual patient observations (31), our computer model predicted the TH induced QT interval prolongation, as well as T wave amplitude augmentation at V6 lead.

First, our powerful model of simulation underscores the impact of PD on AP and ECG. PD shortens AP and QT, providing more information of the "ischemic" nature of PD. Secondly, TH normalization AP and QT on ECG. Significant pre-clinical experimental evidence corroborates our findings that increase of APD and maintained tissue conductivity are two main antiarrhythmic effects of TH (32). We showed in this study that TH provides potential cardio-protection by strongly dissipating arrhythmic electrical re-entry, even in the presence of simulated structural tissue heterogeneity.

The circadian variation of death in dialysis patients (33), with greater than expected frequencies in the early morning hours, makes a nightly delivered therapy such as PD cooling particularly promising.

Strength of the Model

One of the strengths of this study is the use of simulation model of AP with cell's model and ECG with a 3D wedge model. Simulations were performed to demonstrate the potential one to one relationship between cooling and ECG features, which were not apparent in patient recordings due to lack of control ECG. Through this simulation, we were able to catch the effects of simulated TH on the ECG which is prolongation of QRS and of the QT interval.

The use of alternative methods such as computer simulations is of great importance. Direct experimental and clinical possibilities for detailed study cardiac arrhythmias in human ventricular myocardium is limited. Multiple ionic currents that govern repolarization are particularly susceptible to hypothermia. An important feature of our model is that all major ionic currents are fitted to data on human ventricular myocytes and expression experiments of human cardiac channels. We can therefore define a simulated model to implement different experimental condition and show potential impact of PD and impact of cooling on cardiac electrophysiology (34).

Study Limitations

This pilot study of peritoneal dialysate cooling has limitations. The study was not designed to interrogate the driving effect of the cooling intervention given its small sample size. Similarly, although clinical outcomes such as hospitalizations and mortality were tracked in the 9 months period after study completion, it is not adequately powered nor was the intervention delivered for sufficient time to estimate outcomes. We did not measure difference in body core temperature, however we hypothesized infusion of cold peritoneal dialysis leads to cold shock protein synthesis (35). It has been demonstrated that these cold shock protein could protect against ischemia but also regulate electrophysiological properties of the heart, especially cardiac pacemaker activity, and repolarization phase of atrial and ventricular cardiomyocytes (36). Moreover, oral temperature was not precise enough to discriminate difference in body temperature. Although body temperature was monitored all along the cold PD session, we provide only temperature at the start of the normothermic PD session.

CONCLUSION

Manipulation of temperature through the use of cooled peritoneal dialysis fluid has significant effects on myocardial perfusion. The observed high resolution changes in perfusion pattern and direct effects on development and propagation of electrical activity through the heart appear to be capable of significantly modifying arrhythmic potential. This proof of principal study provides the means for further optimization of a cooled interventions (in terms of exposure and magnitude) and justifies additional study and development to provide primary protection against cardiac sudden death for patients receiving PD.

DATA AVAILABILITY STATEMENT

The raw data supporting the conclusions of this article will be made available by the authors, without undue reservation.

REFERENCES

- Jain AK, Blake P, Cordy P, Garg AX. Global trends in rates of peritoneal dialysis. *J Am Soc Nephrol.* (2012) 23:533–44. doi: 10.1681/ASN.2011060607
- Selby NM, Kazmi I. Peritoneal dialysis has optimal intradialytic hemodynamics and preserves residual renal function: why isn't it better than hemodialysis? *Semin Dial.* (2019) 32:3–8. doi: 10.1111/sdi.12752
- Cuculich PS, Sánchez JM, Kerzner R, Greenberg SL, Sengupta J, Chen J, et al. Poor prognosis for patients with chronic kidney disease despite ICD therapy for the primary prevention of sudden death. *Pacing Clin Electrophysiol.* (2007) 30:207–13. doi: 10.1111/j.1540-8159.2007.00651.x
- Amin MS, Fox AD, Kalahasty G, Shepard RK, Wood MA, Ellenbogen KA. Benefit of primary prevention implantable cardioverter-defibrillators in the setting of chronic kidney disease: a decision model analysis. *J Cardiovasc Electrophysiol.* (2008) 19:1275–80. doi: 10.1111/j.1540-8167.2008.01258.x
- Fu L, Zhou Q, Zhu W, Lin H, Ding Y, Shen Y, et al. Do implantable cardioverter defibrillators reduce mortality in patients with chronic kidney disease at all stages? *Int Heart J.* (2017) 58:371–7. doi: 10.1536/ihj.16-357
- Wang AYM, Brimble KS, Brunier G, Holt SG, Jha V, Johnson DW, et al. ISPD cardiovascular and metabolic guidelines in adult peritoneal dialysis patients

ETHICS STATEMENT

The studies involving human participants were reviewed and approved by CRIC: R-16-012; REB approval number: 107280, NCT NCT04394780. The patients/participants provided their written informed consent to participate in this study.

AUTHOR CONTRIBUTIONS

SK conceived and performed the study. SK, AS, and CM was involved in protocol development. LH assisted in obtained ethical approval, and assisted SK to perform image analysis. TT assisted in patient recruitment and dialysis delivery. SK and SL performed data analysis and wrote the first manuscript draft. All authors wrote and approved the final manuscript.

FUNDING

This study received funding from BAXTER. The funder was not involved in the study design, collection, analysis, interpretation of data, the writing of this article or the decision to submit it for publication. This study was supported by Heart and Stroke grant (G-17-0018311, PI: CM).

ACKNOWLEDGMENTS

We acknowledge Dr. Shemer Ratner who helps in the conception of the study. We thank LHSC IT, Compute Canada, SHARCNet for IT and HPC resources.

SUPPLEMENTARY MATERIAL

The Supplementary Material for this article can be found online at: <https://www.frontiersin.org/articles/10.3389/fmed.2021.700824/full#supplementary-material>

- part II - management of various cardiovascular complications. *Perit Dial Int J Int Soc Perit Dial.* (2015) 35:388–96. doi: 10.3747/pdi.2014.00278
- Clinical Evaluation of a New Concept: Resting Myocardial Perfusion Heterogeneity Quantified by Markovian Analysis of PET Identifies Coronary Microv.* Available online at: <https://www.ncbi.nlm.nih.gov/pubmed/?term=Clinical+Evaluation+of+a+New+Concept%3A+Resting+Myocardial+Perfusion+Heterogeneity+Quantified+by+Markovian+Analysis+of+PET+Identifies+Coronary+Microvascular+Dysfunction+and+Early+Atherosclerosis+in+1%2C034+Subjects> (accessed February 24, 2020).
- Lu D-Y, Yalçın H, Yalçın F, Zhao M, Sivalokanathan S, Valenta I, et al. Stress myocardial blood flow heterogeneity is a positron emission tomography biomarker of ventricular arrhythmias in patients with hypertrophic cardiomyopathy. *Am J Cardiol.* (2018) 121:1081–9. doi: 10.1016/j.amjcard.2018.01.022
- Zhou L, Solhjo S, Millare B, Plank G, Abraham MR, Cortassa S, et al. Effects of regional mitochondrial depolarization on electrical propagation: implications for arrhythmogenesis. *Circ Arrhythm Electrophysiol.* (2014) 7:143–51. doi: 10.1161/CIRCEP.113.000600
- Hamamoto H, Leshnower BG, Parish LM, Sakamoto H, Kanemoto S, Hinmon R, et al. Regional heterogeneity of myocardial reperfusion

- injury: effect of mild hypothermia. *Ann Thorac Surg.* (2009) 87:164–71. doi: 10.1016/j.athoracsur.2008.08.016
11. Odudu A, Eldehni MT, McCann GP, McIntyre CW. Randomized controlled trial of individualized dialysate cooling for cardiac protection in hemodialysis patients. *Clin J Am Soc Nephrol.* (2015) 10:1408–17. doi: 10.2215/CJN.00200115
 12. McIntyre C, Crowley L. Dying to feel better: the central role of dialysis-induced tissue hypoxia. *Clin J Am Soc Nephrol.* (2016) 11:549–51. doi: 10.2215/CJN.01380216
 13. Selby NM, Burton JO, Chesterton LJ, McIntyre CW. Dialysis-induced regional left ventricular dysfunction is ameliorated by cooling the dialysate. *Clin J Am Soc Nephrol.* (2006) 1:1216–25. doi: 10.2215/CJN.02010606
 14. Al-Jaishi AA, McIntyre CW, Sontrop JM, Dixon SN, Anderson S, Bagga A, et al. Major outcomes with personalized dialysate TEMPerature (MyTEMP): rationale and design of a pragmatic, registry-based, cluster randomized controlled trial. *Can J Kidney Health Dis.* (2020) 7:2054358119887988. doi: 10.1177/2054358119887988
 15. So A, Wisenberg G, Islam A, Amann J, Romano W, Brown J, et al. Non-invasive assessment of functionally relevant coronary artery stenoses with quantitative CT perfusion: preliminary clinical experiences. *Eur Radiol.* (2012) 22:39–50. doi: 10.1007/s00330-011-2260-x
 16. Cerqueira MD, Weissman NJ, Dilsizian V, Jacobs AK, Kaul S, Laskey WK, et al. Standardized myocardial segmentation and nomenclature for tomographic imaging of the heart. A statement for healthcare professionals from the Cardiac Imaging Committee of the Council on Clinical Cardiology of the American Heart Association. *Circulation.* (2002) 105:539–42. doi: 10.1081/JCMR-120003946
 17. Kharche SR, So A, Salerno F, Lee T-Y, Ellis C, Goldman D, et al. Computational assessment of blood flow heterogeneity in peritoneal dialysis patients' cardiac ventricles. *Front Physiol.* (2018) 9:511. doi: 10.3389/fphys.2018.00511
 18. Bassingthwaite JB, Beard DA, Li Z. The mechanical and metabolic basis of myocardial blood flow heterogeneity. *Basic Res Cardiol.* (2001) 96:582–94. doi: 10.1007/s003950170010
 19. Ten Tusscher KHJ, Bernus O, Hren R, Panfilov AV. Comparison of electrophysiological models for human ventricular cells and tissues. *Prog Biophys Mol Biol.* (2006) 90:326–45. doi: 10.1016/j.pbiomolbio.2005.05.015
 20. Krediet RT, Balafa O. Cardiovascular risk in the peritoneal dialysis patient. *Nat Rev Nephrol.* (2010) 6:451–60. doi: 10.1038/nrneph.2010.68
 21. Boon D, Bos WJW, Van Montfrans GA, Krediet RT. Acute effects of peritoneal dialysis on hemodynamics. *Perit Dial Int.* (2001) 21:166–71. doi: 10.1177/089686080102100210
 22. Selby NM, Fialova J, Burton JO, McIntyre CW. The haemodynamic and metabolic effects of hypertonic-glucose and amino-acid-based peritoneal dialysis fluids. *Nephrol Dial Transplant.* (2007) 22:870–9. doi: 10.1093/ndt/gfl654
 23. John SG, Selby NM, McIntyre CW. Effects of peritoneal dialysis fluid biocompatibility on baroreflex sensitivity. *Kidney Int Suppl.* (2008) 108:S119–24. doi: 10.1038/sj.ki.5002612
 24. Cheng L-T, Gao Y-L, Qin C, Tian J-P, Gu Y, Bi S-H, et al. Volume overhydration is related to endothelial dysfunction in continuous ambulatory peritoneal dialysis patients. *Perit Dial Int J Int Soc Perit Dial.* (2008) 28:397–402. doi: 10.1177/089686080802800415
 25. Charytan DM, Skali H, Shah NR, Veeranna V, Cheezum MK, Taqueti VR, et al. Coronary flow reserve is predictive of the risk of cardiovascular death regardless of chronic kidney disease stage. *Kidney Int.* (2018) 93:501–9. doi: 10.1016/j.kint.2017.07.025
 26. Amann K, Breitbart M, Ritz E, Mall G. Myocyte/capillary mismatch in the heart of uremic patients. *J Am Soc Nephrol.* (1998) 9:1018–22. doi: 10.1681/ASN.V961018
 27. Feng Y, Wang X, Fan T, Li L, Sun X, Zhang W, et al. Bifurcation asymmetry of small coronary arteries in juvenile and adult mice. *Front Physiol.* (2018) 9:519. doi: 10.3389/fphys.2018.00519
 28. Filippi S, Gizzi A, Cherubini C, Luther S, Fenton FH. Mechanistic insights into hypothermic ventricular fibrillation: the role of temperature and tissue size. *Europace.* (2014) 16:424–34. doi: 10.1093/europace/euu031
 29. Kienast R, Handler M, Stöger M, Baumgarten D, Hanser F, Baumgartner C. Modeling hypothermia induced effects for the heterogeneous ventricular tissue from cellular level to the impact on the ECG. *PLoS ONE.* (2017) 12:e0182979. doi: 10.1371/journal.pone.0182979
 30. von Ulmenstein S, Storm C, Breuer TGK, Lask S, Attanasio P, Mügge A, et al. Hypothermia induced alteration of repolarization - impact on acute and long-term outcome: a prospective cohort study. *Scand J Trauma Resusc Emerg Med.* (2017) 25:68. doi: 10.1186/s13049-017-0417-6
 31. Kim S-M, Hwang G-S, Park J-S, Shin J-S, Kim G-W, Yang H-M, et al. The pattern of Tpeak-Tend and QT interval, and J wave during therapeutic hypothermia. *J Electrocardiol.* (2014) 47:84–92. doi: 10.1016/j.jelectrocard.2013.05.139
 32. Fedorov VV, Glukhov AV, Sudharshan S, Egorov Y, Rosenshtraukh LV, Efimov IR. Electrophysiological mechanisms of antiarrhythmic protection during hypothermia in winter hibernating versus nonhibernating mammals. *Heart Rhythm.* (2008) 5:1587–96. doi: 10.1016/j.hrthm.2008.08.030
 33. Tisler A, Logan AG, Akocsi K, Tornoci L, Kiss I. Circadian variation of death in hemodialysis patients. *Am J Kidney Dis.* (2008) 51:53–61. doi: 10.1053/j.ajkd.2007.09.019
 34. Bjornstad H, Tande PM, Refsum H. Cardiac electrophysiology during hypothermia. Implications for medical treatment. *Arctic Med Res.* (1991) 50 (Suppl. 6):71–5.
 35. Zhu X, Bührer C, Wellmann S. Cold-inducible proteins CIRP and RBM3, a unique couple with activities far beyond the cold. *Cell Mol Life Sci.* (2016) 73:3839–59. doi: 10.1007/s00018-016-2253-7
 36. Zhong P, Peng J, Bian Z, Huang H. The role of cold inducible RNA-binding protein in cardiac physiology and diseases. *Front Pharmacol.* (2021) 12:610792. doi: 10.3389/fphar.2021.610792

Conflict of Interest: Research funding from Baxter Pr C. McIntyre: Honoraria from Baxter for lecturing.

The authors declare that the research was conducted in the absence of any commercial or financial relationships that could be construed as a potential conflict of interest.

Publisher's Note: All claims expressed in this article are solely those of the authors and do not necessarily represent those of their affiliated organizations, or those of the publisher, the editors and the reviewers. Any product that may be evaluated in this article, or claim that may be made by its manufacturer, is not guaranteed or endorsed by the publisher.

Copyright © 2021 Kharche, Lemoine, Tamasi, Hur, So and McIntyre. This is an open-access article distributed under the terms of the Creative Commons Attribution License (CC BY). The use, distribution or reproduction in other forums is permitted, provided the original author(s) and the copyright owner(s) are credited and that the original publication in this journal is cited, in accordance with accepted academic practice. No use, distribution or reproduction is permitted which does not comply with these terms.