



HAL
open science

Human MuStem cells repress T-cell proliferation and cytotoxicity through both paracrine and contact-dependent pathways

Marine Charrier, Judith Lorant, Rafael Contreras-Lopez, Gautier T  j  dor, Christophe Blanquart, Blandine Lieubeau, Cindy Schleder, Isabelle Leroux, Sophie Deshayes, Jean-Fran  ois Fonteneau, et al.

► To cite this version:

Marine Charrier, Judith Lorant, Rafael Contreras-Lopez, Gautier T  j  dor, Christophe Blanquart, et al.. Human MuStem cells repress T-cell proliferation and cytotoxicity through both paracrine and contact-dependent pathways. *Current Stem Cell Research & Therapy*, 2022, 13 (1), pp.7. 10.1186/s13287-021-02681-3 . inserm-03561720

HAL Id: inserm-03561720

<https://inserm.hal.science/inserm-03561720>

Submitted on 8 Feb 2022

HAL is a multi-disciplinary open access archive for the deposit and dissemination of scientific research documents, whether they are published or not. The documents may come from teaching and research institutions in France or abroad, or from public or private research centers.

L'archive ouverte pluridisciplinaire **HAL**, est destin  e au d  p  t et    la diffusion de documents scientifiques de niveau recherche, publi  s ou non,   manant des   tablissements d'enseignement et de recherche fran  ais ou   trangers, des laboratoires publics ou priv  s.

RESEARCH

Open Access



Human MuStem cells repress T-cell proliferation and cytotoxicity through both paracrine and contact-dependent pathways

Marine Charrier^{1,2,3†}, Judith Lorant^{1†}, Rafael Contreras-Lopez^{4,5}, Gautier Tjédor⁴, Christophe Blanquart⁶, Blandine Lieubeau⁷, Cindy Schleder¹, Isabelle Leroux¹, Sophie Deshayes⁶, Jean-François Fonteneau⁶, Candice Babarit¹, Antoine Hamel⁸, Armelle Magot⁹, Yann Péréon⁹, Sabrina Viau¹⁰, Bruno Delorme¹⁰, Patricia Luz-Crawford^{5,11}, Guillaume Lamirault², Farida Djouad^{4*†} and Karl Rouger^{1*†}

Abstract

Background: Muscular dystrophies (MDs) are inherited diseases in which a dysregulation of the immune response exacerbates disease severity and are characterized by infiltration of various immune cell types leading to muscle inflammation, fiber necrosis and fibrosis. Immunosuppressive properties have been attributed to mesenchymal stem cells (MSCs) that regulate the phenotype and function of different immune cells. However, such properties were poorly considered until now for adult stem cells with myogenic potential and advanced as possible therapeutic candidates for MDs. In the present study, we investigated the immunoregulatory potential of human MuStem (hMuStem) cells, for which we previously demonstrated that they can survive in injured muscle and robustly counteract adverse tissue remodeling.

Methods: The impact of hMuStem cells or their secretome on the proliferative and phenotypic properties of T-cells was explored by co-culture experiments with either peripheral blood mononucleated cells or CD3-sorted T-cells. A comparative study was produced with the bone marrow (BM)-MSCs. The expression profile of immune cell-related markers on hMuStem cells was determined by flow cytometry while their secretory profile was examined by ELISA assays. Finally, the paracrine and cell contact-dependent effects of hMuStem cells on the T-cell-mediated cytotoxic response were analyzed through IFN- γ expression and lysis activity.

Results: Here, we show that hMuStem cells have an immunosuppressive phenotype and can inhibit the proliferation and the cytotoxic response of T-cells as well as promote the generation of regulatory T-cells through direct contact and via soluble factors. These effects are associated, in part, with the production of mediators including heme-oxygenase-1, leukemia inhibitory factor and intracellular cell adhesion molecule-1, all of which are produced at significantly

*Correspondence: farida.djouad@inserm.fr; karl.rouger@inrae.fr

†Marine Charrier, Judith Lorant, Farida Djouad and Karl Rouger have contributed equally to this work

¹ INRAE, Oniris, PAnTher, UMR 703, Oniris - Site de La Chantrerie, 101, Route de Gachet, CS. 40706, 44307 Nantes, France

⁴ INSERM U1183 IRMB, Hôpital Saint Eloi, CHRU Montpellier, Université de

Montpellier, 80, Rue Augustin Fliche, 34295 Montpellier, France

Full list of author information is available at the end of the article



higher levels by hMuStem cells than BM-MSCs. While the production of prostaglandin E2 is involved in the suppression of T-cell proliferation by both hMuStem cells and BM-MSCs, the participation of inducible nitric oxide synthase activity appears to be specific to hMuStem cell-mediated one.

Conclusions: Together, our findings demonstrate that hMuStem cells are potent immunoregulatory cells. Combined with their myogenic potential, the attribution of these properties reinforces the positioning of hMuStem cells as candidate therapeutic agents for the treatment of MDs.

Keywords: Muscular dystrophy, Cell therapy, Human adult stem cell, MuStem cell, Immunomodulation, T-cell

Background

Muscular dystrophy (MD) is a heterogeneous group of more than 50 genetically distinct neuromuscular diseases characterized by local or generalized fiber degeneration [1]. While clinical presentation and severity can vary considerably, the progressive loss of muscle mass and function, leading to muscle weakness, reduced motility and premature death, is common to all forms [1]. As a consequence of molecular defects mainly affecting cytoskeletal or extracellular matrix proteins, muscle fiber membrane damage is common and results in profound disruption of homeostasis, as well as inflammation and fibrosis [2]. Duchenne muscular dystrophy (DMD) is the most common and devastating form of MD, affecting 1 in 3500–5500 male newborns [3, 4]. DMD is caused by mutations in the gene encoding dystrophin, leading to a lack of a functional protein essential for maintenance of muscle fiber integrity [5].

The presence of muscle inflammation and a significant increase in the proportion of immune cells in dystrophic muscle reveals an essential functional role of the immune system in the pathogenesis of MD [6, 7]. This association was initially supported by studies demonstrating that glucocorticosteroid-mediated immunosuppression limits clinical signs and delays the course of DMD in patients and animal models [8, 9]. The diversity of leukocytes that infiltrate dystrophic muscle, including neutrophils, eosinophils, macrophages, helper CD4⁺ T-lymphocytes and cytotoxic CD8⁺ T-lymphocytes (CTLs), further supports an immunological component [10–12]. In X-chromosome-linked muscular dystrophy (*mdx*) mice, one of the most commonly used animal models of DMD [13], depletion of myeloid cells at an early age markedly decreases the proportion of necrotic fibers [11, 12]. T-cells are among the first cells to infiltrate *mdx* mouse muscle, prior to the onset of necrosis, indicating an important role as effectors in early disease pathogenesis [14]. In young *mdx* mice, selective T-cell inhibition markedly diminishes the extent of inflammatory cell infiltrate and reduces both muscle necrosis and fibrosis, underscoring the importance of the adaptive immune system in DMD. Furthermore, disease severity is reduced in *mdx* mice after pharmacological inhibition or genetic ablation

of the inflammatory cytokines interferon- γ (IFN- γ) and tumor-necrosis factor- α (TNF- α) [15, 16]. Finally, accumulation of regulatory T cells (Tregs) has been demonstrated in infiltrates in muscle tissue from DMD patients [17], *mdx* mice [17, 18] and dysferlin-deficient mice [19]. These findings highlight the therapeutic importance of regulating the infiltration and accumulation of immune cells in dystrophic muscle, both of which contribute to disease progression and severity.

Over the last two decades, muscle repair potential has been attributed to tissue-resident stem cells capable of forming new muscle fibers in response to acute injury. These cells include side population (SP) cells [20, 21], CD133⁺ cells [22, 23], mesoangioblasts (Mabs) [24–26], bone-marrow- and adipose tissue-derived-mesenchymal stem cells (BM-MSCs and AD-MSCs, respectively) [27, 28], PW1⁺/Pax7⁺ interstitial cells (PICs) [29] and muscle-derived stem cells (MDSCs) [30, 31]. The newly discovered potential of these adult stem cells has opened novel therapeutic avenues for MDs in addition to strategies targeting dystrophin restoration including exon skipping with antisense oligonucleotides, vector-mediated gene therapy and CRISPR/Cas9-mediated gene editing [32]. In particular, it constitutes a promising means of overcoming the limited efficacy of myoblast transplantation. Moreover, most if not all MSCs are immunoprivileged. MSCs lack human leukocyte antigen type-II (HLA-II) and co-stimulatory molecules CD80 and CD86, which are required for T-lymphocyte activation, but express HLA-I on their surface [33]. An ability to escape immune recognition has been described for human AD-MSCs in immunocompetent animal models of DMD and allows long-term integration of these cells into muscle tissue [28, 34]. MSCs are also potent immunoregulatory cells and appear to be capable of regulating both innate and adaptive immune responses in vitro and in vivo [35–38]. Moreover, MSCs control the phenotype and immunological responses of T-cell subsets (helper CD4⁺, CTLs, Treg cells) [38–42], B-cells [43], natural killer (NK) cells [44, 45], dendritic cells (DC) [46, 47] and macrophages [48, 49]. In vitro, MSCs suppress T-cell proliferation in response to mitogens, alloantigens and activating antibodies [39, 50] and promote the generation of Tregs

[38, 51]. In vivo, MSCs enhance long-term allograft acceptance and tolerance [40, 52] and exert therapeutic effects in experimental models of inflammatory and autoimmune disorders [53, 54]. These immunomodulatory/immune-dampening properties of MSCs involve direct contact with target cells [55, 56], but are largely mediated by the release or synthesis of numerous factors [57], the best described of which are indoleamine 2,3-dioxygenase (IDO) [58], prostaglandin E2 (PGE2) [59, 60], inducible nitric oxide synthase (iNOS) [61] and heme oxygenase-1 (HO-1) [62].

In the past few years, we have characterized a type of MDSC isolated from tissue samples from healthy dogs and humans. Based on their phenotype and plasticity, we have shown that these cells, referred as MuStem cells, correspond to early myogenic-committed progenitors with a mesenchymal perivascular profile. Importantly, these oligopotent stem cells display an interesting potential for skeletal and cardiac muscle repair [63–66]. After allogeneic transplantation into golden retriever muscular dystrophy (GRMD) dogs, a clinically relevant animal model of DMD, MuStem cells contribute to muscle fiber formation, induce long-term muscle fiber regeneration and limit the progression of muscle damage and fibrosis [63, 67]. Similarly, human MuStem (hMuStem) cells show in vivo a robust capacity for muscle regeneration after delivery into injured skeletal muscle in immunodeficient mice [64] and efficiently counteract adverse tissue remodeling, primarily by limiting fibrosis, in an immunodeficient rat model of myocardial infarction [66]. While these findings have positioned hMuStem cells as an attractive tool for muscle regenerative medicine, their immunoregulatory properties, which are pivotal for tissue remodeling, have not been investigated to date.

In the present study, we investigated whether hMuStem cells can exert immunosuppressive effects by regulating the immune response. We characterized the immunophenotype of these cells and compared it with that of BM-MSCs. Moreover, we studied the effect of hMuStem cells on T-cell proliferation and cytotoxicity in co-culture experiments. These original data provide new insights into the modes of action of hMuStem cells and reinforce their potential as an effective therapeutic agent for the treatment of MDs.

Methods

Human skeletal muscle tissue

Tissue samples were obtained from *Paravertebralis* muscle biopsies collected from patients aged 12–19 years. Patients were free of known muscle disease and had undergone surgery for acute scoliosis at the Department of Pediatric surgery of the Centre Hospitalier Universitaire (CHU) de Nantes (France). Written informed

consent was obtained from all patients. All protocols were approved by the Clinical Research Department of the CHU (Nantes, France), according to the rules of the French Regulatory Health Authorities (Approval Number: MESR/DC-2010-1199). The biological sample bank was created in compliance with national guidelines regarding the use of human tissue for research (Approval Number: CPP/29/10).

Isolation and culture of human MuStem cells

Human MuStem cells were independently isolated from muscle biopsies from 5 patients and cultured, as previously described [64, 66]. For pro-inflammatory stimulation, cells were expanded until they reached approximately 60–70% confluence, and then the medium was changed for growth medium containing 50 ng/mL of both TNF- α and IFN- γ (Miltenyi, Bergisch Gladbach, Germany) and cultured for 24 h.

Isolation and culture of human bone marrow-derived mesenchymal stem cells

Human BM-MSCs were collected from 4 patients aged 5, 11, 19 and 60 years who underwent hip replacement surgery. The patients were informed and provided written informed consent prior to collection of tissue samples as approved by the French Ministry of Higher Education and Research (DC-2010-1185). BM-MSCs were cultured, characterized at the phenotypic level and tested for their tri-lineage differentiation potential as previously described [68, 69]. For pro-inflammatory stimulation, cells were expanded until they reached approximately 60–70% confluence, and then the medium was changed for fresh medium containing 50 ng/mL of both TNF- α and IFN- γ (Miltenyi) and cultured for 24 h.

Immunosuppression assay

Three sets of independent experiments were conducted with hMuStem cells that were successively co-cultured with allogeneic human PBMCs, human CD3⁺ lymphocytes/allogeneic PBMCs and human CD8⁺ T-cell clones. A detailed description of these immunosuppression assays is provided in Additional file 5: Methods.

Cytotoxicity assay

Meso 34 NanoLuc cells were seeded at 5×10^3 cells/well in 96-well plates [70, 71]. After 3 h, 1×10^4 clonally-derived CD8⁺ T-cells previously co-cultured with either hMuStem cells, BM-MSCs or their respective secretome were added. To determine their cytotoxic effects on Meso 34 NanoLuc cells, 45 μ L of medium was collected after 24 h and light emission was measured at 480 nm immediately after addition of 5 μ L of 30 μ M coelenterazine using a Mithras LB 940 microplate analyzer (Berthold

Technologies, Baden Württemberg, Germany), which measures nanoluciferase activity released in the supernatant following cell lysis.

Flow cytometry

Human MuStem cells, BM-MSCs, PBMCs or MUC-1-specific CD8⁺ T-cells were resuspended in cold phosphate buffered saline (PBS)/2% human serum and 1×10^5 cells were incubated (30 min, 4 °C) in darkness with fluorochrome-conjugated Ab at a saturating concentration. The Abs used are listed in Additional file 4: Table S1. Isotype-matched Ab and fluorescence minus one-control samples were used as negative controls for gating and analyses. Where applicable, 7-amino-actinomycin D (7-AAD; BD Biosciences, Franklin Lakes, NJ, USA) was added to evaluate cell viability. For immunophenotyping of hMuStem cells, samples were acquired using a FACS Aria flow cytometer (BD Biosciences), and for analyses of PBMCs and CD8⁺ T-cells a FACS Canto II (BD FACSDiva™ Software) was used. For each experiment and labeling, at least 15×10^3 viable cells were considered. All the collected data were analyzed using FlowJo software (FlowJo, Ashland, OR, USA).

Immunocytochemistry

Human macrophages, obtained from the Clinical Transfer Facility of the CHU de Nantes (CICBT0503, Nantes, France), were seeded at the density of 1.5×10^5 cells/cm² in 12-well plates and cultured in RPMI 1640 (Thermo Fischer Scientific, Illkirch, France) containing 10% human serum (EFS, Nantes, France), 1% glutamin (Sigma-Aldrich, Saint Quentin-Fallavier, France), 1000 IU/mL M-CSF (Miltenyi) and 1% 10,000 IU/mL penicillin, 10 mg/mL streptomycin, 25 µg/mL fungizone (amphotericin B) (PSF; Sigma-Aldrich). After 72 h, they were activated with 100 ng/mL of lipopolysaccharide (LPS) from *Escherichia coli* 0111:B4 (Sigma-Aldrich) for 24 h. RAW 264.7 murine macrophage cell line (ATCC TIB-71, Manassas, VA, USA) was provided by the cell bank of the IECM Lab (Nantes, France). It was seeded at the density of 2.2×10^4 cells/cm² in 12-well plates and cultured in RPMI 1640 (Gibco) containing 10% fetal calf serum (FCS), 1% glutamin (Sigma-Aldrich), 1% PSF (Sigma-Aldrich) during 96 h. Human MuStem cells, BM-MSCs, human macrophages or RAW cells were fixed in cold methanol (15 min, −20 °C) and treated with 0.3% triton X-100 (30 min, 4 °C). After incubation (1 h, RT) in blocking buffer (5% goat serum in PBS), cells were incubated overnight with iNOS Ab (1:100, sc-651 clone, Santa Cruz Biotechnology, Santa Cruz, CA, USA) and counterstained (15 min, 37 °C) with DAPI fluorescent cell-permeable DNA probe (Life Technologies Ltd, Paisley, UK). The number of positive cells was determined using Fiji

image analysis software [72]. For each condition, more than 300 cells were counted.

Reverse transcription and real-time semi-quantitative PCR

Total RNA was extracted using the RNeasy mini or micro kit following the manufacturer's instructions (Qiagen, Santa Clara, CA, USA), quantified using a NanoDrop spectrophotometer (Labtech, Wilmington, DE, USA) after DNase treatment (Ambion, Austin, TX, USA) and converted to cDNA by reverse transcription as described previously [64]. Oligonucleotide primers used for semi-quantitative RT-PCR analysis of gene expression were designed using Oligo Primer Analysis Software v.7 (Molecular Biology Insights Inc., Colorado Springs, CO, USA) and are listed in Additional file 4: Table S2. Data were normalized to mRNA levels of the housekeeping gene RPS18 and were calculated using the 2^{−ΔCt} method.

ELISA assay

Supernatant of CTLs, hMuStem cells, or BM-MSCs (cultured under either basal or TNF-α/IFN-γ-stimulated conditions) was collected, centrifuged to remove any cell fragments and stored at −20 °C. The presence of secreted proteins, specifically granzyme B, hepatocyte growth factor (HGF), VEGF, PGE2, IL-6, IL-8, IL-10, LIF and Gal-1 was measured by ELISA (granzyme B, VEGF, IL-6, IL-8, IL-10, LIF, Gal-1: DuoSet ELISA R&D Systems; PGE2: Enzo Life Sciences; IL35: Wuhan Fine Biological Technology, Tebu bio-SAS, Le Perray En Yvelynes, France), according to the manufacturer's instructions.

Statistical analysis

All data are reported as the mean ± SEM. Lymphocyte proliferation was compared between co-cultures containing different proportions of MuStem cells using a Kruskal–Wallis test followed by Dunn's multiple comparisons between pairs. Expression and secretion of regulatory molecules by hMuStem cells was compared with that of BM-MSCs using the Mann–Whitney U test. Expression and secretion of regulatory molecules by hMuStem cells expanded under stimulated or unstimulated conditions was compared using the Wilcoxon matched-pairs signed rank test. A value of $p < 0.05$ was considered statistically significant.

Results

hMuStem cells display a poorly immunogenic and immunosuppressive phenotype

To determine whether the hMuStem cells display an immunosuppressive phenotype similar to BM-MSCs [33, 73, 74], we assessed the expression of HLA-I and -II, as well as molecules involved in T-cell interaction.

Human MuStem cells from 5 independent donors were expanded *in vitro* and analyzed at passage 5 (P5) using fluorescence-activated cell sorting (FACS). All hMuStem cells shared a typical expression pattern of myogenic progenitors with a signature of perivascular MSCs (Additional file 2: Figure S1), in agreement with our previous findings [64, 66, 75]. Given that stimulation with pro-inflammatory cytokines modifies the phenotype of MSCs [73], hMuStem cells were cultured either in basal media or in presence of TNF- α and IFN- γ . While hMuStem cells constitutively expressed HLA-I molecules (HLA-ABC, 100%) and HLA-DP (29.2% \pm 23.9%; range 9.5–59.0%), they were uniformly negative for HLA-DQ and HLA-DR (Fig. 1A; Table 1). Moreover, they did not express HLA-G1 or HLA-E, which are involved in immune tolerance and NK cell inhibition, respectively. Human MuStem cell stimulation with TNF- α /IFN- γ increased HLA-ABC expression (relative mean fluorescence intensity [rMFI]: 21.2 \pm 10.3 vs. 13.3 \pm 7.3 in basal conditions) and resulted in HLA-DP expression in 88.3% \pm 33.2% of cells. Stimulation with TNF- α /IFN- γ had no effect on expression levels of HLA-DQ, HLA-DR or HLA-G1. Notably, HLA-E expression was induced in all hMuStem cells in response to stimulation with TNF- α /IFN- γ .

We next examined the expression pattern of molecules involved in the regulation of T-lymphocyte activity. All hMuStem cells were homogeneously negative for the co-stimulatory molecules CD80, CD86 and CD40, which are required for efficient T-cell activation, even after stimulation with TNF- α /IFN- γ (Fig. 1B). Human MuStem cells did not express the inhibitory lymphocyte molecule corresponding to programmed death ligand-1 (PDL-1), but homogeneous low-level PDL-2 expression was detected under basal conditions (Fig. 1C). Interestingly, stimulation with TNF- α /IFN- γ induced uniform PDL-1 expression by hMuStem cells and significantly enhanced the intensity of PDL-2 expression (rMFI: 3.7 \pm 1.1 vs. 2.3 \pm 0.3 in basal conditions), as previously described for BM-MSCs [76]. We next investigated the expression of CD112 and CD155, two molecules expressed by antigen-presenting cells and known to mediate inhibition of lymphocytes by their interaction with TIGIT [77]. While CD112 expression was not detected in either basal or stimulated conditions, hMuStem cells showed constitutive CD155 expression, which was unaffected by stimulation with TNF- α /IFN- γ (Fig. 1D). Finally, in basal conditions hMuStem cells expressed two molecules known to induce lymphocyte adhesion: intracellular cell adhesion molecule-1 (ICAM-1) and vascular cell adhesion molecule-1 (VCAM-1) (37.4% \pm 11.2% and 8.3% \pm 4.0%, respectively) (Fig. 1E). Stimulation with TNF- α /IFN- γ significantly increased the expression of both ICAM-1 and VCAM-1 (100% positivity for both

molecules), and the first in a much higher extent as appreciated by a strongly shifted rMFI (Fig. 1E).

Together, these data suggest that hMuStem cells are poorly immunogenic cells considering the expression of HLA, co-stimulatory and inhibitory molecules and that they interact with T-cells such as BM-MSCs.

hMuStem cells inhibit T-lymphocyte proliferation and induce Treg-like cells in peripheral blood mononuclear cells

Based on the phenotypic features of hMuStem cells, we sought to determine whether they could exert immunosuppressive effects on T cells. PHA-stimulated allogeneic peripheral blood mononuclear cells (PBMCs) previously stained with cell trace violet (CTV) were co-cultured for 3 days with hMuStem cells ($n=5$, independent donors) or BM-MSCs, used as reference ($n=4$, independent donors), at a ratio of 1:10 PBMCs. Compared with PBMC-only cultures, hMuStem cells resulted in significant inhibition of both CD4⁺ and CD8⁺ T-cell proliferation, as evidenced by proportions of proliferating cells of 54.5% \pm 28.0% and 48.1% \pm 29.9%, respectively ($p < 0.001$; Fig. 2A). Similar results were obtained for BM-MSCs with 48.9% \pm 13.0% and 46.3% \pm 21.1% of CD4⁺ and CD8⁺ T cells, respectively.

Expression of the T-cell activation marker CD25 decreased when hMuStem cells were co-cultured with PBMCs (66.0% \pm 7.2% and 67.7% \pm 7.6% for CD4⁺ and CD8⁺ T-cells, $p < 0.01$; Fig. 2B). While a similar proportion of CD4⁺/CD25⁺ cells (59.2% \pm 8.2% with respect to PBMC-only culture) was observed in BM-MSC + PBMC co-cultures, those of CD8⁺/CD25⁺ cells was lower (48.2% \pm 8.5%), suggesting a stronger effect of BM-MSCs than hMuStem cells on CD8⁺ T-cell activation ($p < 0.001$).

To further investigate the effects of hMuStem cells on T-cells, we characterized the expression profile of the T-cell subset regulatory factors IL-10 and FoxP3 and the pro-inflammatory factors IFN- γ and IL-17 in CD4⁺ T-cells collected from hMuStem cell + PBMC and BM-MSC + PBMC co-cultures. Remarkably, the proportion of CD4⁺/IL-10⁺ cells and CD4⁺/FoxP3⁺ cells in hMuStem cell + PBMC co-cultures was significantly higher than that observed in PBMC-only cultures ($p < 0.05$; Fig. 2C). However, compared with hMuStem cells, BM-MSCs were more efficient at generating CD4⁺/FoxP3⁺ cells. Moreover, FACS analysis revealed that in hMuStem cell + PBMC and BM-MSC + PBMC co-cultures, the proportions of CD4⁺/IFN- γ ⁺ cells and CD4⁺/IL-17⁺ T-cells were similar to those seen in PBMC-only cultures, indicating that hMuStem cells, like BM-MSCs, did not significantly affect the proportions of pro-inflammatory lymphocytes. Overall, these results demonstrate that hMuStem cells can significantly reduce proliferation and

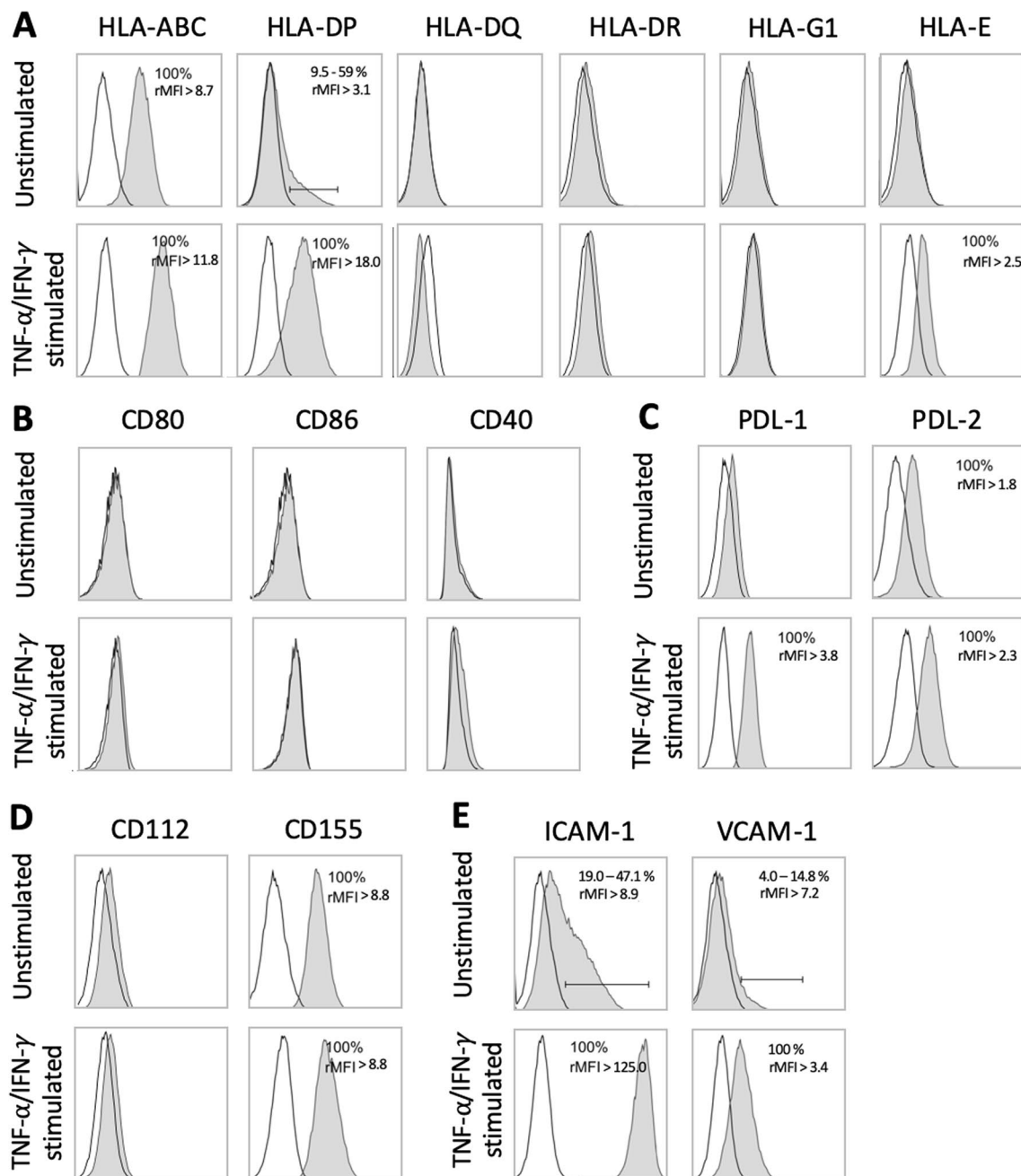


Fig. 1 Phenotypic profile of human MuStem cells focused on immune-cell-related markers. Cell events were first selected upon their size and granularity (forward scatter vs. side scatter density plot), while the FSC-A/FSC-H plot on gated events allowed identification of single cells. Flow cytometry comparison of: **a** HLA class I (HLA-ABC, HLA-G1 and HLA-E) and class II (HLA-DQ, -DR and -DP) molecules; **b** co-stimulatory molecules CD80, CD86 and CD40; **c** programmed death ligand (PDL)-1 and -2; **d** TIGIT receptor CD112 and CD155; and **e** intracellular cell adhesion molecule-1 (ICAM-1) and vascular cell adhesion molecule (VCAM-1) in hMuStem cells cultured in basal condition (unstimulated) or after stimulation with TNF- α /IFN- γ (pro-inflammatory condition). When an expression is detected, mean \pm SEM of positive cells and rMFI are reported on the top right corner. Results of one representative cell batch out of five independent batches are presented

activation of CD4⁺ and CD8⁺ T-cells and exert an immunosuppressive effect by promoting a Treg cell-like

phenotype in CD4⁺ T-lymphocytes without affecting their pro-inflammatory capacity.

Table 1 Expression levels of immune cell-related markers measured in human MuStem cells

Cell surface markers	Unstimulated hMuStem cells		TNF- α /IFN- γ -stimulated hMuStem cells	
	Positive cells (%)	rMFI	Positive cells (%)	rMFI
<i>Human leukocyte antigen</i>				
HLA-ABC	100%	13.3 \pm 7.3	100%	21.2 \pm 10.3
HLA-DP	29.2% \pm 23.9%	9.7 \pm 4.8	88.3% \pm 23.5%	19.6 \pm 10.5
HLA-E	0%	NA	100%	4.0 \pm 1.1
<i>Immune-checkpoint ligands</i>				
<i>Co-inhibitory factors</i>				
PDL-1	0%	NA	100%	4.0 \pm 1.3
PDL-2	100%	2.3 \pm 0.3	100%	3.7 \pm 1.1
<i>Other factors</i>				
CD155	100%	12.0 \pm 2.9	100%	14.0 \pm 3.6
<i>Adhesion molecules involved in T-cell interaction</i>				
ICAM-1	37.4% \pm 11.2%	10.4 \pm 6.0	100%	284.5 \pm 124.8
VCAM-1	8.3% \pm 4.0%	6.0 \pm 3.7	100%	5.6 \pm 3.2

Flow cytometry comparison of human leukocyte antigen (HLA) molecules, immune-checkpoint ligands and adhesion molecules involved in T-cell interaction in hMuStem cells cultured in basal (unstimulated) or pro-inflammatory (TNF- α /IFN- γ -stimulation) conditions. Data are presented as the mean \pm SEM ($n=5$, independent batches) percentage of positive events for each marker and the relative mean fluorescence intensity (rMFI). NA, not applicable

hMuStem cells express classical MSC immunomodulatory mediators

To investigate the mechanisms underlying the suppressive activity of hMuStem cells, we examined the expression of a panel of well-described regulatory mediators including metabolic enzymes, pleiotropic hormones and interleukins using flow cytometry, immunocytochemistry and enzyme-linked immunosorbent assay (ELISA). In 4 out of 5 hMuStem cell batches, more than 95% of cells were positive for the heme oxygenase 1 (HO-1), whereas 26.2% HO-1⁺ cells were detected in the remaining batch (Fig. 3A). Remarkably, in BM-MSC batches the proportion of HO-1⁺ cells ranged from 11.6 to 50.2% (i.e., markedly lower than detected in hMuStem cells). Moreover, stimulation with TNF- α /IFN- γ induced a more than twofold increase in the proportion of HO-1⁺ cells in the hMuStem cell batch exhibiting initially non-homogenous expression for the metabolic enzyme, whereas no clear change was observed in stimulated BM-MSCs. Immunocytochemistry analysis revealed that hMuStem cells and BM-MSCs were both uniformly positive for the expression of iNOS (Fig. 3B). IDO-1 gene expression was detected in both hMuStem cells and BM-MSCs, and increased significantly (by a factor of 141,000 and 36,000 in hMuStem cells and BM-MSCs, respectively) upon stimulation with TNF- α /IFN- γ (Fig. 3C).

Human MuStem cells and BM-MSCs showed similar levels of IL-6 expression (10.4 \pm 2.5 and 13.7 \pm 6.8 ng/10⁶ cells, respectively). Stimulation with TNF- α /IFN- γ resulted in a significant increase of IL-6 secretion in some hMuStem cell batches ($p < 0.05$, Fig. 3D; Table 2).

This increase was greater than that observed in BM-MSCs. IL-8 production was observed in all hMuStem cells (13.2 \pm 14.8 ng/10⁶ cells) and increased significantly in response to stimulation with TNF- α /IFN- γ (640.2 \pm 426.3 ng/10⁶ cells; $p < 0.05$). A similar profile was observed in BM-MSCs, with, however, a less pronounced impact of the stimulation. Neither IL-10 nor IL-35 were detected in hMuStem cell or BM-MSC culture supernatant. Moreover, in hMuStem cell batches secretion of leukemia inhibitory factor (LIF) was 90-fold higher than in BM-MSCs ($p < 0.01$). LIF secretion was unchanged by stimulation with TNF- α /IFN- γ in both hMuStem cells and BM-MSCs (Fig. 3C). Levels of PGE2 secretion were similar in hMuStem cells and BM-MSCs (6.9 \pm 3.3 and 10.1 \pm 8.5 pg/10⁶ cells, respectively), although greater variability was observed in BM-MSC batches. Following stimulation with TNF- α /IFN- γ , increased PGE2 secretion was observed for all batches of both cell types. In MuStem cells, stimulation resulted in a twofold increase ($p < 0.05$). Analysis of vascular endothelial growth factor (VEGF) secretion revealed significantly lower levels in hMuStem cells than BM-MSCs, both in basal conditions and following stimulation with TNF- α /IFN- γ ($p < 0.05$). Interestingly, stimulation induced a twofold decrease in VEGF secretion in hMuStem cells, whereas in BM-MSCs a variable response was observed. Finally, variable levels of Galectin-1 (Gal-1) secretion were detected in the different batches of hMuStem cells and BM-MSCs. In hMuStem cells, stimulation with TNF- α /IFN- γ resulted in a twofold decrease in Gal-1 levels compared with basal conditions ($p < 0.05$). Levels of

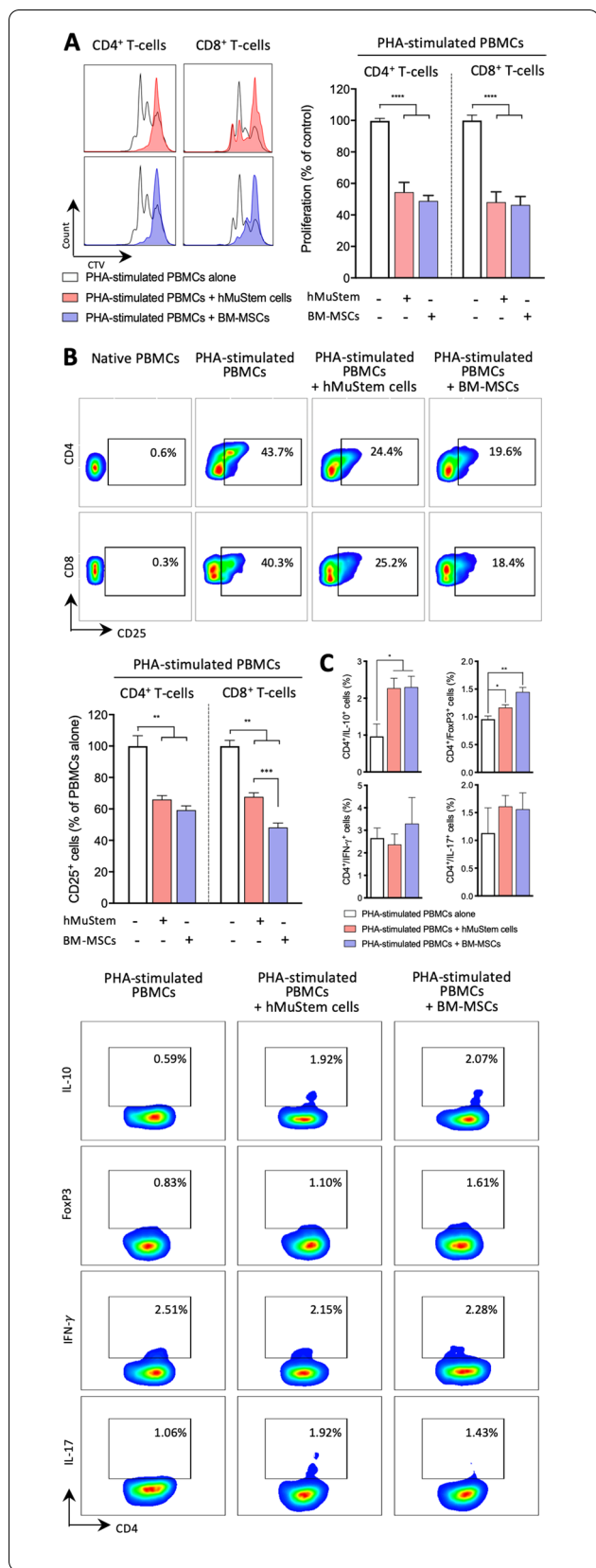


Fig. 2 Effect of human MuStem cells and bone marrow-derived mesenchymal stem cells on proliferation and phenotype of T-cells in peripheral blood mononucleated cells. **a** Representative profile (left panel) and quantification (right panel) of the proliferation of Cell Trace Violet (CTV)-labeled CD4⁺ and CD8⁺ T-cells in peripheral blood mononucleated cells (PBMCs) cultured alone or with unstimulated hMuStem cells ($n = 5$, independent batches) or bone marrow-derived mesenchymal stem cells (BM-MSCs; $n = 4$, independent batches). PBMCs were stimulated with phyto-hemagglutinin (PHA) to induce T-cell proliferation. The suppressive capacity of hMuStem cells or BM-MSCs was determined by tracking cell division of CTV-labeled PBMCs. **b** Representative FACS plots with gating of CD25⁺ cells in CD4⁺ and CD8⁺ T-cell fractions of PBMCs cultured alone or under PHA stimulation and with hMuStem cells or BM-MSCs. Percentages are expressed as the percentage of PBMCs cultured alone. **c** Representative FACS plots with gating of IL-10⁺, FoxP3⁺, IFN-γ⁺ and IL-17⁺ cells in CD4⁺ T-cell fractions of PBMCs cultured under PHA stimulation only and with hMuStem cells or BM-MSCs. Percentages are expressed as the percentage of PBMCs cultured alone. Data are presented as mean ± SEM (* $p < 0.05$, ** $p < 0.01$, *** $p < 0.001$, **** $p < 0.0001$; Mann-Whitney U test)

secreted Gal-1 were lower in stimulated hMuStem cells than stimulated BM-MSCs ($p < 0.05$). Overall, our findings indicate that hMuStem cells, like BM-MSCs, produce inflammation-modulated soluble factors that exert immunomodulatory effects, including PGE2, IL-6, LIF, VEGF and Gal-1. The secretion profile of hMuStem cells was clearly impacted by pro-inflammatory conditions, as evidenced by concomitant increases in the secretion of PGE2, IL-6 and LIF and decreases in levels of VEGF and Gal-1. Human MuStem cells are distinguished from BM-MSCs by higher levels of HO-1 expression and LIF secretion and lower levels of VEGF secretion in basal conditions, and by decreased secretion of VEGF and Gal-1 in pro-inflammatory conditions.

hMuStem cells suppress T-cell proliferation through PGE2 secretion and iNOS activity

To clarify the mechanism underlying the immunosuppressive effects of hMuStem cells on lymphocyte proliferation, we performed a series of inhibitory assays. Indomethacin, a selective inhibitor of cyclooxygenase-2, which mediates PGE2 synthesis, was added to co-cultures of hMuStem cells + PHA-stimulated PBMCs, after first verifying that indomethacin does not interfere with PBMC proliferation in PBMC-only cultures. BM-MSCs were also considered in the experiment. In indomethacin-treated co-cultures of hMuStem cells + stimulated PBMCs, the proportions of proliferative CD4⁺ and CD8⁺ T-lymphocytes were significantly higher than those observed in untreated co-cultures ($42.9\% \pm 8.8\%$ vs. $24.2\% \pm 5.9\%$ and $50.4\% \pm 14.6\%$ vs. $17.0\% \pm 5.6\%$, respectively; $p < 0.001$ in both cases; Fig. 4A), revealing partial but significant restoration of both CD4⁺ and CD8⁺

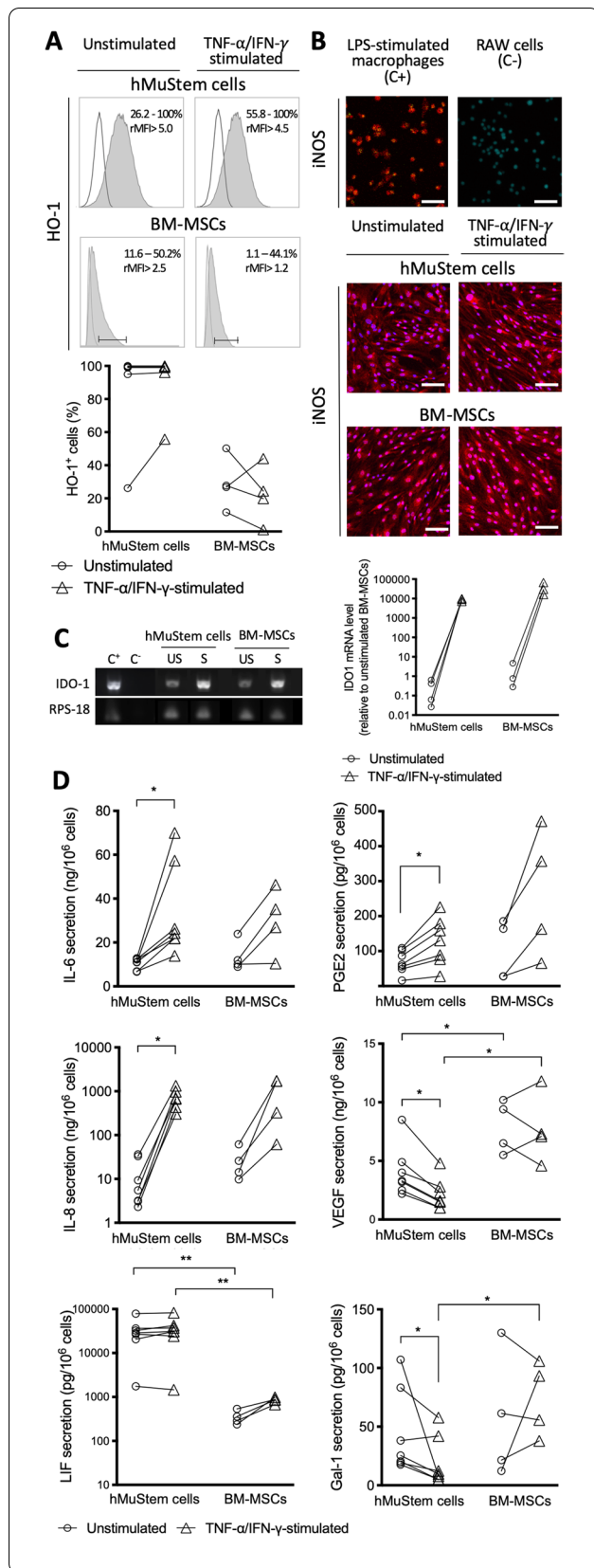


Fig. 3 Expression and secretion of immunoregulatory mediators in cultured human MuStem cells and bone marrow-derived mesenchymal stem cells. **a** Flow cytometry comparison of heme oxygenase-1 (HO-1) expression in hMuStem cells and BM-MSCs. **b** Fluorescent immunolabeling of inducible nitric oxide synthase (iNOS) in hMuStem cells and BM-MSCs. Lipopolysaccharide (LPS)-human monocyte-derived activated macrophages for 24 h and RAW 264.7 cell line were used as positive (C+) and negative (C-) controls, respectively. Nuclei were counterstained with DAPI (blue). Scale bars, 100 μ m. **c** Representative RT-PCR profile of indoleamine 2,3-dioxygenase-1 (IDO-1) gene obtained for hMuStem cells and BM-MSCs. For each sample, the level of IDO-1 expression was quantified using the average mRNA level of IDO-1 obtained in unstimulated BM-MSCs as a reference. LPS-human monocyte-derived activated macrophages for 24 h and water were used as positive (C+) and negative (C-) controls, respectively. **d** Interleukin, growth factor, enzyme and carbohydrate-binding protein secretion profile of hMuStem cells and BM-MSCs. ELISA assays were performed using culture supernatant collected 24 h after medium change. Results are expressed as individual values and normalized as concentration relative to 1 million cultured cells (ng or pg/10⁶ cells). Each experiment was performed on at least 5 and 4 independent batches of hMuStem cells and BM-MSCs, respectively. Stimulation corresponds to a 24-h treatment with 50 ng/mL of TNF- α and IFN- γ . * p < 0.05, ** p < 0.01, *** p < 0.001, **** p < 0.0001; Wilcoxon matched-pairs signed rank test (unstimulated vs. stimulated) or Mann-Whitney U test (hMuStem cells vs. BM-MSCs). US, unstimulated; S, TNF- α /IFN- γ -stimulated

T-cell proliferation. Similar results were obtained in BM-MSC + stimulated PBMC co-cultures. Next, we examined the effect of the addition of L-NMMA, which suppresses NO production, in co-cultures of hMuStem cells + PHA-stimulated PBMCs and of BM-MSCs + PHA-stimulated PBMCs. In L-NMMA-treated co-cultures of hMuStem cells + PBMCs, the proportions of proliferative CD4⁺ and CD8⁺ T-lymphocytes were significantly higher than those observed in untreated co-cultures (73.3% \pm 30.5% vs. 54.4% \pm 27.2% and 72.8% \pm 40.7% vs. 50.4% \pm 38.8%, respectively; p < 0.001 in both cases; Fig. 4B). These results reflect a 21.4% \pm 9.6%, and 24.3% \pm 16.4% restoration of PBMC proliferation, respectively (p < 0.05; Fig. 4B) Importantly, the proportions of proliferating CD4⁺ and CD8⁺ T-lymphocytes were unchanged in the L-NMMA-treated BM-MSC + PBMC co-cultures, despite the fact that iNOS was expressed by BM-MSCs.

Taken together, these findings point to PGE2 as a mediator of the immunosuppressive effects of hMuStem cells on T-lymphocyte proliferation, as already described for BM-MSCs, and also indicate a role of iNOS that appears not to be shared with BM-MSCs.

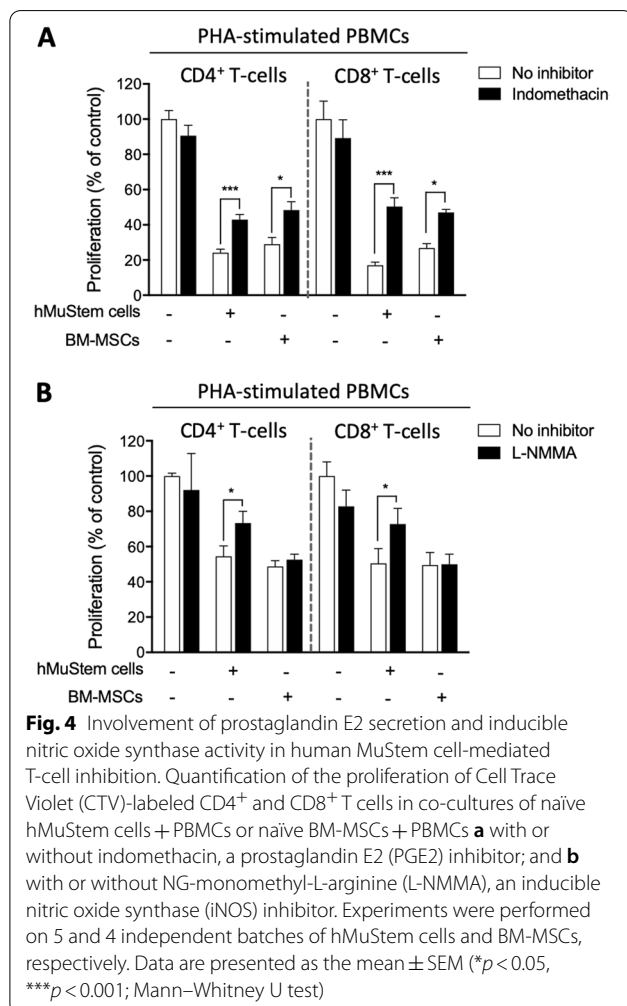
hMuStem cells directly inhibit CD3⁺ T-lymphocyte proliferation in a dose-dependent manner

To further characterize the impact of hMuStem cells on T-lymphocyte regulation, we investigated whether

Table 2 Secretory profile of immunoregulatory mediator by human MuStem cells and bone marrow-derived mesenchymal stem cells cultured in basal or pro-inflammatory conditions

	hMuStem cells		BM-MSCs	
	Unstimulated	TNF- α /IFN- γ -stimulated	Unstimulated	TNF- α /IFN- γ -stimulated
<i>Interleukins</i>				
IL-6 (ng/10 ⁶ cells)	10.4 \pm 2.5	34.2 \pm 22.0	13.7 \pm 6.8	29.7 \pm 15.0
IL-8 (ng/10 ⁶ cells)	13.2 \pm 14.9	640.2 \pm 426.3	27.9 \pm 23.5	1 094.2 \pm 730.1
LIF (pg/10 ⁶ cells)	32 200 \pm 23 300	49 870 \pm 29 500	355.4 \pm 130.0	847.2 \pm 126.7
<i>Growth factors</i>				
PGE2 (ng/10 ⁶ cells)	6.9 \pm 3.3	12.7 \pm 6.7	10.1 \pm 8.5	26.4 \pm 18.3
VEGF (ng/10 ⁶ cells)	4.1 \pm 2.1	2.1 \pm 1.3	7.8 \pm 2.2	7.7 \pm 3.0
<i>Other factors</i>				
Galectin-1 (pg/10 ⁶ cells)	44.4 \pm 36	20.0 \pm 21.1	56.2 \pm 53.6	73.2 \pm 31.8

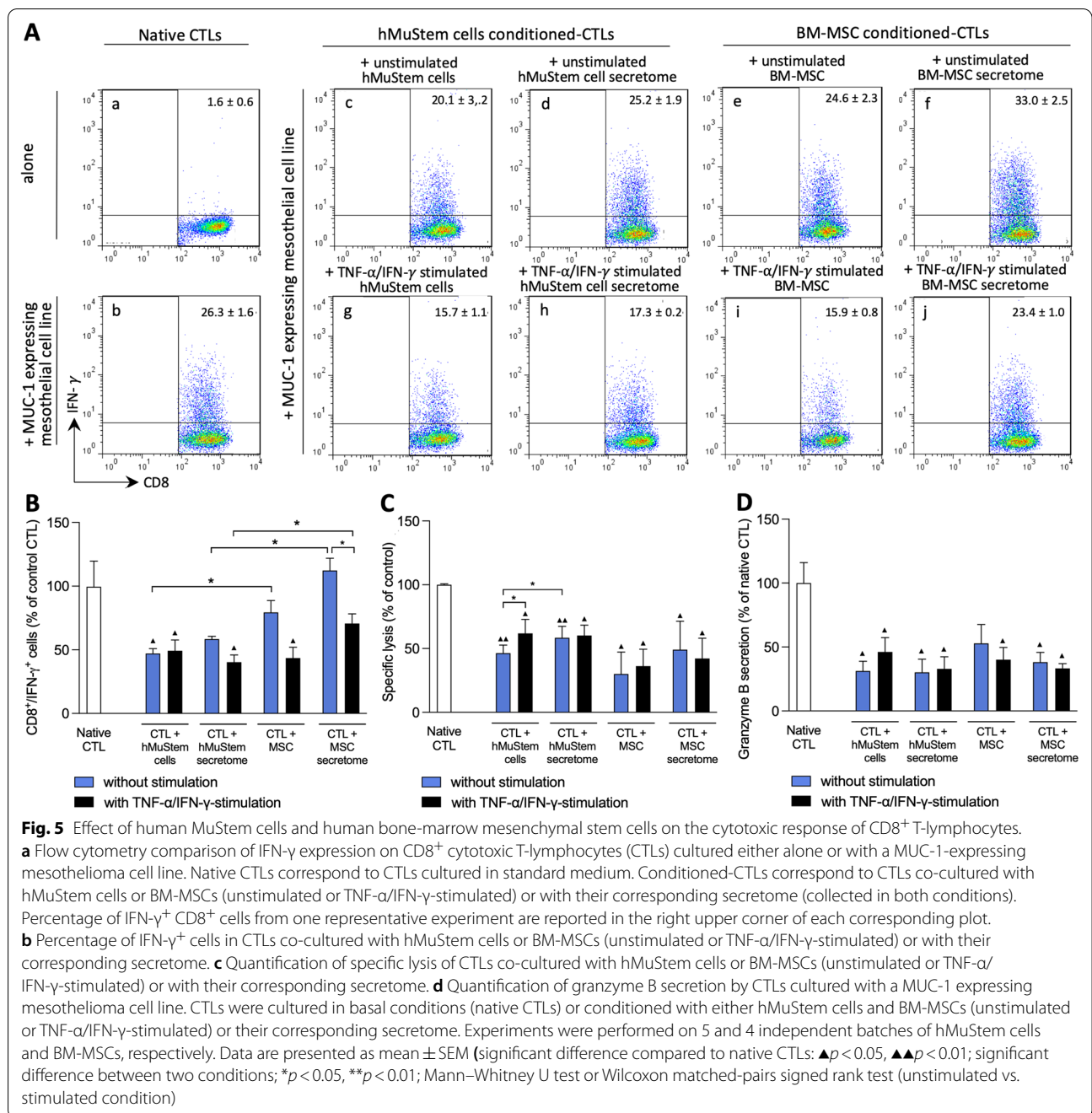
The secretory profile was determined by ELISA of culture supernatant collected 24 h after medium change. Results are expressed as the mean \pm SEM or range of the concentration relative to 10⁵ cultured cells. Each experiment was performed on 5 and 4 independent batches of hMuStem cells and bone marrow-derived mesenchymal stem cells (BM-MSCs), respectively. Stimulation corresponds to a 24-h treatment with 50 ng/mL TNF- α /IFN- γ



hMuStem cell-induced inhibition of T-cell proliferation is mediated directly by hMuStem cells, or also involves the regulation of other cells within PBMCs. CD3-sorted lymphocytes stimulated with allogeneic PBMCs in MLR were co-cultured with hMuStem cells ($n=4$, independent donors) at T-cell:hMuStem cell ratios of 16:1 to 1:2. The addition of hMuStem cells at ratios of 16:1 and 4:1 resulted in no change in the proliferation of MLR-stimulated CD3⁺ lymphocytes relative to that observed in T-cells alone (Additional file 3: Figure S2). By contrast, the addition of hMuStem cells at ratios of 1:1 and 1:2 dramatically inhibited the proliferation of MLR-stimulated CD3⁺ lymphocytes (88.1% \pm 12.6% and 99.0% \pm 1.20%, respectively), demonstrating that hMuStem cells strongly suppress T-cell proliferation in a dose-dependent manner ($p < 0.03$). Importantly, these findings show that hMuStem cells can act directly on T-cells independently of the participation of other immune cell types.

hMuStem cells inhibit the cytotoxic response of CD8⁺ T-lymphocytes through cell-cell contact and paracrine activity

Having established that hMuStem cells can inhibit T-cell proliferation and promote a Treg cell-like phenotype, we next sought to determine their impact on the cytotoxic activity of T-lymphocytes. To this end, we examined IFN- γ expression and the cytotoxic response of a CD8⁺ cytotoxic T-lymphocyte (CTL) clone that specifically recognizes the HLA-A2/MUC1 peptide complex after contact with a luciferase-expressing mesothelioma cell line expressing this complex. First, the CTL clone was co-cultured for 6 h either directly with hMuStem cells or BM-MSCs at ratio of 1:10 (stem cells:CTLs) or with the corresponding secretome. After contact with the specific



mesothelioma cell line, the proportion of IFN- γ ⁺ cells was determined in the different conditions (Fig. 5A). In the co-cultures of CTLs with either hMuStem cells (panel c) or their secretome (panel d), the percentage of cells expressing IFN- γ was 47.2% \pm 8.4% and 58.4% \pm 4.8% of that observed with CTLs cultured alone (native CTLs; panel b), respectively (Fig. 5B). While a trend toward a reduction in the proportion of IFN- γ ⁺ cells was observed in presence of hMuStem cell secretome compared to

native CTLs, a significant decrease was observed only for CTLs co-cultured directly with hMuStem cells ($p < 0.05$), suggesting that suppression of CTL activation by hMuStem cells relies on a direct contact. In comparison, when BM-MSCs (panel e) or their secretome (panel f) were added to CTLs, the proportion of cells expressing IFN- γ corresponded to 79.4% \pm 18.7% and 112.4% \pm 19.1% of that observed in native condition, revealing an absence of any inhibitory action from BM-MSC on CTL activation.

Given that hMuStem cells and BM-MSCs enhance the expression and secretion of regulatory molecules in pro-inflammatory conditions, we next repeated the cytotoxicity assay using TNF- α /IFN- γ -stimulated cells. Compared to CTLs co-cultured with unstimulated hMuStem cells, no changes were observed in CTLs cultured in presence of stimulated hMuStem cells (panel g). However, a significant decrease of IFN- γ ⁺ cells was noted with stimulated hMuStem cell secretome (representing decreases of 2.0-fold and 2.4-fold, respectively; $p < 0.05$; panel h). In presence of stimulated BM-MSCs (panel i), the percentage of IFN- γ ⁺ cells was significantly reduced ($43.6\% \pm 16.9\%$ of that observed in CTLs cultured alone) showing the ability of BM-MSCs to potently suppress the activation of CTL through direct contact ($p < 0.05$). The percentage of IFN- γ ⁺ cells was lower when CTLs were co-cultured with stimulated BM-MSC secretome as compared to the unstimulated BM-MSC secretome ($70.7\% \pm 15.2\%$ vs $112.4\% \pm 19.1\%$ of native CTLs; $p < 0.05$; panel j). Altogether, those results show that, in contrast to hMuStem cells, BM-MSCs require a TNF- α /IFN- γ stimulation to suppress CTL activation through both direct cell contact and the secretion of soluble factors.

Luciferase activity in supernatant of co-cultures revealed specific lysis in CTLs co-cultured with hMuStem cells and those co-cultured with hMuStem cell secretome, corresponding to $46.4\% \pm 16.7\%$ and $58.4\% \pm 23.9\%$ with respect to the native condition (Fig. 5C). These results reveal lower cytotoxic activity in conditioned CTLs than native CTLs ($p < 0.01$ and $p < 0.05$, respectively), although this reduction was significantly more pronounced when CTLs were in direct contact with hMuStem cells ($p < 0.05$). In CTLs co-cultured with BM-MSCs or their secretome, lytic activity corresponded to $30.1\% \pm 34.3\%$ and $49.1\% \pm 44.6\%$ of native condition, respectively, revealing a lower intensity in both conditions ($p < 0.05$). Thus, inhibition of CTL cytotoxic activity induced by hMuStem cells and BM-MSCs appears to be mediated by cell–cell contact-dependent mechanisms as well as secreted factors. Interestingly, no statistical differences in the intensity of inhibition of CTL-mediated lysis were observed either between unstimulated and TNF- α /IFN- γ stimulated conditions or between hMuStem cells and BM-MSCs. In line with this view, secretion of granzyme B by CTLs was markedly reduced when they were co-cultured with either hMuStem cells or their secretome (Fig. 5D). Similar results were observed in co-cultures performed with BM-MSCs and their secretome. Also, TNF- α /IFN- γ stimulation did not alter the degree of inhibition of granzyme B secretion in both cultures done with hMuStem cells and BM-MSCs. Overall, these findings demonstrate that naïve hMuStem cells, unlike BM-MSCs that require a pro-inflammatory stimulation,

reduce the cytotoxic response of CTLs, through mechanisms that involve both cell–cell contact and soluble factors.

Discussion

In this study, we provide original and compelling data demonstrating the capacity of hMuStem cells to control T-cell function, highlighting the potent immunosuppressive properties of these cells. Our data indicate that hMuStem cells exhibit a poorly immunogenic phenotype and also interact with T-cells to regulate their functions. We show that hMuStem cells can (1) induce the generation of Treg cells; (2) inhibit CD4⁺ and CD8⁺ T-lymphocyte proliferation in part by regulating PGE2 secretion and iNOS activity; and (3) repress the CTL response both through direct cell–cell contact and paracrine factors.

The present study provides the first evidence that hMuStem cells and BM-MSCs share a similar immunophenotype. Indeed, in basal conditions, hMuStem cells are positive for HLA-I molecules and are negative for HLA-II (*i.e.*, HLA-DQ, HLA-DR) and for co-stimulatory molecules, including CD80, CD86 and CD40, that are required for complete T-cell activation. We found that 10–60% of hMuStem cells were HLA-DP⁺. Our data suggest that hMuStem cells, like BM-MSCs, have a poorly immunogenic profile. Moreover, we found that stimulation of hMuStem cells with TNF- α /IFN- γ upregulated HLA-I molecules and uniformed HLA-DP expression. These observations distinguish hMuStem cells from BM-MSCs, in which HLA-DR is upregulated in response to pro-inflammatory stimulation [74]. The phenotype described here for hMuStem cells is also consistent with the characterization of Mabs, for which immunomodulatory properties have been described [78]. Mabs constitutively express HLA-ABC and low levels of HLA-DR in the resting state, and express neither the co-stimulatory molecules CD40, CD80 or CD86 nor the inhibitory molecules PDL-1 or cytotoxic T-lymphocyte antigen-4. They also observed increased expression of HLA-DR, but not HLA-ABC after IFN- γ stimulation. BM-MSCs exert their immunosuppressive function through the expression of a wide number of membrane molecules, including PDL-1 and PDL-2, which are ligands of PD-1 expressed by T-lymphocytes [76, 79, 80]. PD-1 signal transduction pathways in T-cells mediate the inhibition of proliferation, hyporesponsiveness and apoptosis [81]. We found that hMuStem cells did not express PDL-1, but were homogeneously positive for PDL-2, which negatively regulates T-cell responses and plays a pivotal role in immune tolerance [82]. Moreover, stimulation with TNF- α /IFN- γ induced the expression of PDL-1 while up-regulating PDL-2, indicating that hMuStem cells have a favorable phenotypic profile for the modulation of T-cell activity.

Human MuStem cells express the main lymphocyte adhesion molecules ICAM-1 and VCAM-1, which are crucial for leukocyte adhesion and for the formation and stabilization of immunological synapses between T-cells and APCs [83]. ICAM-1 and VCAM-1 are also critical for MSC-mediated immunosuppression [84]. ICAM-1 signaling increases the immunosuppressive capacity of MSCs by enhancing PGE2 secretion and IDO expression [85]. Moreover, VCAM-1-positive MSCs exert a greater suppressive effect than VCAM-1-negative MSCs by inhibiting the Th1 response and inducing the generation of Treg cells [86]. We found that in basal conditions hMuStem cells, like BM-MSCs, expressed low levels of ICAM-1 and VCAM-1, both of which increased after exposure to pro-inflammatory cytokines (TNF- α /IFN- γ), as evidenced by detection of 100% of positive cells and a 27-fold increase in ICAM-1 expression. This expression profile could explain the immunoregulatory properties of hMuStem cells, their capacity to physically interact with T-cells and thereby reinforce inhibitory molecule-mediated signaling (i.e., via PDL-1, PDL-2, CD155), and the proximity of T-cells to secreted immunosuppressive mediators.

Human MuStem cells inhibited T-cell proliferation when co-cultured with a mix of PBMCs or isolated activated T cells, revealing a direct inhibitory effect of hMuStem cells (i.e., without the involvement of other immune cell partners). These observations are consistent with the findings of multiple studies showing that human MSCs directly suppress T-cell proliferation in a dose-dependent manner [39, 87]. Human Mabs have also been shown to potently and dose-dependently suppress CD4⁺ and CD8⁺ T-cell proliferation *in vitro*, exerting a significant inhibitory effect at Mabs:PBMC ratios of between 1:1 and 1:4 [88]. Our investigation of the underlying mechanisms revealed the involvement of PGE2, as previously reported for both MSCs [89] and Mabs [78]. We also uncovered a role of iNOS activity in the inhibitory activity of hMuStem cells, but not BM-MSCs, highlighting a major difference between these two cell types. We found that BM-MSCs were uniformly positive for iNOS expression, in contrast to the findings of several studies demonstrating that iNOS is not expressed by human MSCs but is expressed in MSCs derived from other species including mouse, rat, hamster and rabbit [90].

Another key finding of our study is the capacity of hMuStem cells to specifically interact with CTLs and suppress their cytotoxic response. Indeed, after 24 h of contact with hMuStem cells, CTL clones showed a decrease in their ability to express IFN- γ , secrete granzyme B and lyse target cells following recognition of a specific HLA-I/peptide signal. These findings indicate that hMuStem cells inhibit the activation and function of fully differentiated IL-2-activated clonally-derived

CTLs. Importantly, this global inhibitory effect is constitutive for hMuStem cells whereas it is for BM-MSCs. In line with this finding, an inhibitory effect was observed when BM-MSCs were co-cultured with PBMCs, but only when they were added prior to CTL activation or during the early phase of CTL activation and in a dose-dependent manner [91]. This finding could suggest that the lack of effect observed here on IFN- γ expression could be related to a lesser action of BM-MSCs compared to hMuStem cells. In addition, it would be interesting to further explore this ability of hMuStem cells by studying their effect on the activity of NK cells, which are constitutively cytotoxic. This would be all the more interesting as studies of the inhibitory effects of BM-MSCs on NK cells have produced conflicting findings, ranging from no effects [91] to reduced cytotoxic activity of NK cells [44].

The co-culture of PBMCs or CTLs with hMuStem cell secretome instead of hMuStem cells produced similar, albeit milder, effects, suggesting that the inhibitory effect of hMuStem cells involves paracrine activity but also requires direct cell-cell contact. A role of direct contact is supported by the constitutive and high-level expression of CD155 and ICAM-1, respectively, observed in all hMuStem cells. Pro-inflammatory stimulation is known to increase both the secretion of immunomodulatory mediators and the expression of the majority of molecules involved in interactions with lymphocytes. Notably, CTLs previously cultured with stimulated hMuStem cells showed lytic capacities and IFN- γ expression levels similar to those of CTLs cultured with naïve hMuStem cells. This may be explained by the fact that the co-culture environment already provides an inflammatory signal to the hMuStem cells due to the presence of IFN- γ produced by CTLs. An alternative hypothesis is that the membrane molecules that induce CTL inhibition are not modulated by IFN- γ or TNF- α , as described for CD155. For further comparison between hMuStem cells and BM-MSCs, it would be informative to determine why TNF- α /IFN- γ stimulation is instead required for BM-MSCs to reduce IFN- γ expression by CTLs. The secretome of stimulated hMuStem cells did not further decrease granzyme B secretion or the lytic capacity of CTLs relative to naïve hMuStem cells but did result in lower IFN- γ expression in CTLs after activation by the HLA-I/peptide complex. This indicates that prior stimulation of hMuStem cells leads to a greater paracrine effect on IFN- γ expression but not on specific lytic activity of CTLs. Of note, a similar impact with a more marked intensity was observed for the secretome of stimulated BM-MSCs. This result suggests that the hMuStem cells use distinct paracrine mechanisms of action to inhibit IFN- γ expression and to suppress the lytic capacity of CTLs. Consistent with this view, IFN- γ production appears not

to be directly correlated with cytotoxic function [92]. Together, these findings highlight the diversity of modes of action used by hMuStem cells to suppress the cytotoxic response of CTLs, a key characteristic that appears to distinguish hMuStem cells from BM-MSCs.

Here, we found that such as BM-MSCs [51, 60], hMuStem cells induced the generation of Treg-like cells corresponding to Tr-1 and CD4⁺FoxP3⁺ cells. However, in our experimental conditions, the capacity of hMuStem cells to induce Treg cells was significant but modest, resulting in the generation of few Tr1 and CD4⁺FoxP3⁺ cells. Therefore, it will be of interest to further elucidate the immunoregulatory mechanisms of hMuStem cells by studying the regulatory function of Tr1 and CD4⁺FoxP3⁺ cells generated at the end of co-culture experiments. This type of functional study is warranted given that Treg cells play a critical role in the pathogenesis of MDs, as evidenced by the direct relationship between the increase in Treg cell number and the reduction in both inflammation and fiber necrosis in dystrophic mice [17, 18].

Finally, our findings provide evidence that LIF secretion clearly distinguishes hMuStem cells from BM-MSCs. LIF has been proposed to play a key role in the generation of Treg cells [93, 94]. Indeed, specific blockade of the glycoprotein cytokine LIF in co-cultures of human BM-, Wharton's jelly- and adipose tissue-derived MSCs + PBMCs resulted in restoration of CD3⁺ lymphocyte proliferation by up to 91% and a decrease in CD4⁺CD25⁺Foxp3⁺ cells. Given the inhibitory effect of hMuStem cells on T-cell proliferation and their capacity to generate Tregs described here, it would be informative to further examine the role of LIF in the immunosuppressive effect of hMuStem cells.

Conclusion

Our findings show that hMuStem cells exert potent immunosuppressive properties on T-cells, inhibiting their proliferation and cytotoxic response and inducing the generation of Tregs. Human MuStem cells may modulate immune cell activity in addition to directly contribute to muscle fiber formation/regeneration, thereby exerting positive effects on the pathophysiology of MDs through two complementary modes of action. Human MuStem cells could therefore constitute a particularly efficient therapeutic tool for clinical application in the context of MDs.

Abbreviations

7-AAD: 7-Amino-actinomycin D; α -MEM: Alpha-minimum essential medium; Ab: Antibody; APC: Antigen-presenting cell; AD-MSC: Adipose tissue-derived mesenchymal stem cell; bFGF: Basic fibroblast growth factor; BM-MSC: Bone marrow-derived mesenchymal stem cell; CTV: Cell trace violet; DC: Dendritic cell; DMD: Duchenne muscular dystrophy; EGF: Epidermal growth factor; FCS: Fetal calf serum; Gal-1: Galectin-1; GM: Growth medium; GRMD: Golden

retriever muscular dystrophy; HGF: Hepatocyte growth factor; HLA: Human leukocyte antigen; HO-1: Heme oxygenase-1; IDO: Indoleamine 2,3-dioxygenase; IFN: Interferon; IMDM: Iscove's modified Dulbecco's medium; iNOS: Inducible nitrite oxide synthase; IL: Interleukin; LIF: Leukemia inhibitory factor; L-NMMA: NG-monomethyl-L-arginine; Mabs: Mesoangioblasts; MD: Muscular dystrophy; MDSC: Muscle-derived stem cell; *mdx*: X-chromosome-linked muscular dystrophy; MLR: Mixed lymphocyte reaction; mRNA: Messenger ribonucleic acid; MSC: Mesenchymal stem cell; NEAA: Non-essential amino-acid; NK: Natural killer; NO: Nitric oxide; PBMC: Peripheral blood mononuclear cell; PBS: Phosphate buffered saline; PGE2: Prostaglandin E2; PHA: Phyto-hemagglutinin; PICs: PW1 + Pax7+ interstitial cells; PMA: Phorbol myristate acetate; PSF: Penicillin-streptomycin-fungizone; RT-PCR: Reverse transcription-polymerase chain reaction; SCID: Severe combined-immunodeficiency; SP: Side population; TNF: Tumor necrosis factor; Treg: Regulatory T; VEGF: Vascular endothelial growth factor.

Supplementary Information

The online version contains supplementary material available at <https://doi.org/10.1186/s13287-021-02681-3>.

Additional file 1: Methods S1. Immunosuppression assay.

Additional file 2: Table S1. List of antibodies used for flow cytometry analysis.

Additional file 3: Table S2. Primers used for RT-qPCR analysis.

Additional file 4: Figure S1. Expression profile for cell lineage-specific surface markers by human MuStem cell.

Additional file 5: Figure S2. Dose effect of human MuStem cells on the proliferation of CD3⁺ lymphocytes cultured with irradiated peripheral blood mononucleated cells.

Acknowledgements

We thank Anne Fernandez (Institut de Génétique Humaine, CNRS UMR 9002; Université de Montpellier, France) and Cédric Menard (INSERM UMR1236, Rennes, France) for helpful advice and discussions to improve the experimental design.

Authors contributions

MC conceived and designed the experiments, collected and/or assembled the data, participated to data analysis, interpretation and manuscript writing. JL performed the co-culture experiments and immunolabeling, ELISA assays and participated to data analysis and interpretation; RCL and CB performed the co-culture and flow cytometry experiments, and participated to data analysis and interpretation; GT, SD and JFF contributed to the in vitro and flow cytometry experiments, data analysis; BL performed the flow cytometry experiments, data analysis and interpretation; CS isolated and expanded the MuStem cell batches, ELISA assays, data analysis; IL isolated and expanded the MuStem cell batches; CB performed the dosage analysis; AH, AM and YP contributed to the study material; SV, BD performed some of the flow cytometry experiments, data analysis; PLC, GL and FD conceived the experimental design and contributed significantly to the data analysis and interpretation as well as to the writing of the manuscript; KR conceived and designed the study, participated to the data interpretation and wrote the manuscript. KR is the guarantor of this work, has full access to all study data and takes responsibility for the integrity of the data. The authors have agreed both to be personally accountable for the author's own contributions and to ensure that questions related to the accuracy or integrity of any part of the work. All authors read and approved the final manuscript.

Funding

This work was supported by a grant from the "Fonds Européen de Développement Régional" (FEDER; No. 38436 and No. PL0003686). It was performed in the context of the IHU-CESTI project that received French government financial support managed by the ANR (Agence Nationale de la Recherche) through the investment of the future program ANR-10-IBHU-005. The IHU-CESTI project was also supported by grants from the Région Pays de la Loire

and Nantes Métropole. MC was recipient of a *Ph.D* grant from the French Ministry of Higher Education, Research and Innovation.

Availability of data and materials

The datasets used and/or analyzed during the current study to support the conclusions are included in the article and in the corresponding additional files. They can be made available from the corresponding author on reasonable request.

Declarations

Ethics approval and consent to participate

Human skeletal muscle tissue: Human MuStem cells were isolated from *Para-vertebralis* muscle biopsies collected from patients aged 12–19 years. Patients were free of known muscle disease and had undergone surgery for acute scoliosis at the Department of Pediatric surgery of the Centre Hospitalier Universitaire (CHU) de Nantes (France). Written informed consent was obtained from all patients. All protocols were approved by the Clinical Research Department of the CHU (Nantes, France), according to the rules of the French Regulatory Health Authorities (approval number: MESR/DC-2010-1199). The biological sample bank was created in compliance with national guidelines regarding the use of human tissue for research (approval number: CPP/29/10). Isolation and culture of human bone marrow-derived mesenchymal stem cells: Human BM-MSCs were collected from patients undergoing hip replacement surgery. The patients were informed and provided written informed consent prior to collection of tissue samples as approved by the French Ministry of Higher Education and Research (DC-2010–1185).

Consent for publication

Not applicable.

Competing interests

The authors declare that they have no financial and non-financial competing interests.

Author details

¹INRAE, Oniris, PANther, UMR 703, Oniris - Site de La Chantrerie, 101, Route de Gachet, CS. 40706, 44307 Nantes, France. ²L'institut du Thorax, INSERM, CNRS, UNIV Nantes, 44007 Nantes, France. ³Université de Nantes, Nantes, France. ⁴INSERM U1183 IRMB, Hôpital Saint Eloi, CHRU Montpellier, Université de Montpellier, 80, Rue Augustin Fliche, 34295 Montpellier, France. ⁵Laboratorio de Immunología Celular y Molecular, Facultad de Medicina, Universidad de los Andes, Las Condes, Chile. ⁶CNRS, INSERM, CRCINA, Université de Nantes, 44000 Nantes, France. ⁷INRAE, Oniris, IECM, 44307 Nantes, France. ⁸Service de Chirurgie Infantile, Centre Hospitalier Universitaire (CHU) de Nantes, 44093 Nantes, France. ⁹Laboratoire d'Explorations Fonctionnelles, Centre de Référence Maladies Neuromusculaires AOC, CHU Nantes, 44093 Nantes, France. ¹⁰Biotherapy Division, Macopharma, 59420 Mouvoux, France. ¹¹IMPACT, Center of Interventional Medicine for Precision and Advanced Cellular Therapy, Santiago, Chile.

Received: 26 March 2021 Accepted: 9 December 2021

Published online: 10 January 2022

References

- Emery AEH. The muscular dystrophies. *Lancet*. 2002;359:687–95.
- Matsumura K, Campbell KP. Deficiency of dystrophin-associated proteins: a common mechanism leading to muscle cell necrosis in severe childhood muscular dystrophies. *Neuromuscul Disord*. 1993;3:109–18.
- Emery AEH. Population frequencies of inherited neuromuscular diseases—a world survey. *Neuromuscul Disord Neuromuscul Disord*. 1991;1:19–29.
- Moat SJ, Bradley DM, Salmon R, Clarke A, Hartley L. Newborn bloodspot screening for Duchenne Muscular Dystrophy: 21 years experience in Wales (UK). *Eur J Hum Genet*. 2013;21:1049–53.
- Hoffman EP, Brown RH, Kunkel LM. Dystrophin: the protein product of the duchenne muscular dystrophy locus. *Cell*. 1987;51:919–28.
- Arahata K, Engel AG. Monoclonal antibody analysis of mononuclear cells in myopathies. I: quantitation of subsets according to diagnosis and sites of accumulation and demonstration and counts of muscle fibers invaded by T cells. *Ann Neurol*. 1984;16:193–208.
- McDouall RM, Dunn MJ, Dubowitz V. Nature of the mononuclear infiltrate and the mechanism of muscle damage in juvenile dermatomyositis and Duchenne muscular dystrophy. *J Neurol Sci J Neurol Sci*. 1990;99:199–217.
- Wehling-Henricks M, Lee JJ, Tidball JG. Prednisolone decreases cellular adhesion molecules required for inflammatory cell infiltration in dystrophin-deficient skeletal muscle. *Neuromuscul Disord Neuromuscul Disord*. 2004;14:483–90.
- Balaban B, Matthews DJ, Clayton GH, Carry T. Corticosteroid treatment and functional improvement in Duchenne muscular dystrophy long-term effect. *Am J Phys Med Rehabil*. 2005;84:843–50.
- Cai B, Spencer MJ, Nakamura G, Tseng-Ong L, Tidball JG. Eosinophilia of dystrophin-deficient muscle is promoted by perforin-mediated cytotoxicity by T cell effectors. *Am J Pathol*. 2000;156:1789–96.
- Wehling M, Spencer MJ, Tidball JG. A nitric oxide synthase transgene ameliorates muscular dystrophy in mdx mice. *J Cell Biol J Cell Biol*. 2001;155:123–31.
- Hodgetts S, Radley H, Davies M, Grounds MD. Reduced necrosis of dystrophic muscle by depletion of host neutrophils, or blocking TNF α function with Etanercept in mdx mice. *Neuromuscul Disord Neuromuscul Disord*. 2006;16:591–602.
- Bulfield G, Siller WG, Wight PAL, Moore KJ. X chromosome-linked muscular dystrophy (mdx) in the mouse. *Proc Natl Acad Sci USA*. 1984;81:1189–92.
- Lozanoska-Ochser B, Benedetti A, Rizzo G, Marrocco V, Di Maggio R, Fiore P, et al. Targeting early PKC θ -dependent T-cell infiltration of dystrophic muscle reduces disease severity in a mouse model of muscular dystrophy. *J Pathol*. 2018;244:323–33.
- Villalta SA, Deng B, Rinaldi C, Wehling-Henricks M, Tidball JG. IFN- γ promotes muscle damage in the mdx mouse model of duchenne muscular dystrophy by suppressing M2 macrophage activation and inhibiting muscle cell proliferation. *J Immunol*. 2011;187:5419–28.
- Spencer MJ, Marino MW, Winckler WM. Altered pathological progression of diaphragm and quadriceps muscle in TNF-deficient, dystrophin-deficient mice. *Neuromuscul Disord Neuromuscul Disord*. 2000;10:612–9.
- Villalta SA, Rosenthal W, Martinez L, Kaur A, Sparwasser T, Tidball JG, et al. Regulatory T cells suppress muscle inflammation and injury in muscular dystrophy. *Sci Transl Med*. 2014;6:258ra142.
- Eghtesad S, Jhunjhunwala S, Little SR, Clemens PR. Rapamycin ameliorates dystrophic phenotype in mdx mouse skeletal muscle. *Mol Med Mol Med*. 2011;17:917–24.
- Tabebordbar M, Wang ET, Wagers AJ. Skeletal muscle degenerative diseases and strategies for therapeutic muscle repair. *Annu Rev Pathol Mech Dis*. 2013;8:441–75.
- Gussoni E, Soneoka Y, Strickland CD, Buzney EA, Khan MK, Flint AF, et al. Dystrophin expression in the mdx mouse restored by stem cell transplantation. *Nature*. 1999;401:390–4.
- Jackson KA, Mi T, Goodell MA. Hematopoietic potential of stem cells isolated from murine skeletal muscle. *Proc Natl Acad Sci USA*. 1999;96:14482–6.
- Torrente Y, Belicchi M, Sampaolesi M, Pisati F, Meregalli M, D'Antona G, et al. Human circulating AC133+ stem cells restore dystrophin expression and ameliorate function in dystrophic skeletal muscle. *J Clin Invest*. 2004;114:182–95.
- Benchaouir R, Meregalli M, Farini A, D'Antona G, Belicchi M, Goyenvalle A, et al. Restoration of human dystrophin following transplantation of exon-skipping-engineered dmd patient stem cells into dystrophic mice. *Cell Stem Cell Cell Stem Cell*. 2007;1:646–57.
- Minasi MG, Riminucci M, De Angelis L, Borello U, Berarducci B, Innocenzi A, et al. The meso-angioblast: a multipotent, self-renewing cell that originates from the dorsal aorta and differentiates into most mesodermal tissues. *Development*. 2002;129:2773–83.
- Sampaolesi M, Torrente Y, Innocenzi A, Tonlorenzi R, D'Antona G, Pellegrino MA, et al. Cell therapy of α -sarcoglycan null dystrophic mice through intra-arterial delivery of mesoangioblasts. *Science*. 2003;301:487–92.

26. Sampaoli M, Blot S, D'Antona G, Granger N, Tonlorenzi R, Innocenzi A, et al. Mesoangioblast stem cells ameliorate muscle function in dystrophic dogs. *Nature*. 2006;444:574–9.
27. Pittenger MF, Mackay AM, Beck SC, Jaiswal RK, Douglas R, Mosca JD, et al. Multilineage potential of adult human mesenchymal stem cells. *Science*. 1999;284:143–7.
28. Rodríguez AM, Pisani D, Dechesne CA, Turc-Carel C, Kurzenne JY, Wdziekonski B, et al. Transplantation of a multipotent cell population from human adipose tissue induces dystrophin expression in the immunocompetent mdx mouse. *J Exp Med*. 2005;201:1397–405.
29. Mitchell KJ, Pannérec A, Cadot B, Parlakian A, Besson V, Gomes ER, et al. Identification and characterization of a non-satellite cell muscle resident progenitor during postnatal development. *Nat Cell Biol*. 2010;12:257–66.
30. Qu Z, Balkir L, Van Deutekom JCT, Robbins PD, Pruchnic R, Huard J. Development of approaches to improve cell survival in myoblast transfer therapy. *J Cell Biol*. 1998;142:1257–67.
31. Qu-Petersen Z, Deasy B, Jankowski R, Ikezawa M, Cummins J, Pruchnic R, et al. Identification of a novel population of muscle stem cells in mice: Potential for muscle regeneration. *J Cell Biol*. 2002;157:851–64.
32. Sun C, Shen L, Zhang X, Xie X. Therapeutic strategies for duchenne muscular dystrophy: an update. *Genes (Basel)*. 2020;11:1–25.
33. Le Blanc K, Tammik C, Rosendahl K, Zetterberg E, Ringdén O. HLA expression and immunologic properties of differentiated and undifferentiated mesenchymal stem cells. *Exp Hematol*. 2003;31:890–6.
34. Vieira NM, Valadares M, Zucconi E, Secco M, Bueno Junior CR, Brandalise V, et al. Human adipose-derived mesenchymal stromal cells injected systemically into GRMD dogs without immunosuppression are able to reach the host muscle and express human dystrophin. *Cell Transplant Cell Transplant*. 2012;21:1407–17.
35. Le Blanc K, Mougiakakos D. Multipotent mesenchymal stromal cells and the innate immune system. *Nat Rev Immunol*. 2012;12:383–96.
36. Djouad F, Plence P, Bony C, Tropel P, Apparailly F, Sany J, et al. Immunosuppressive effect of mesenchymal stem cells favors tumor growth in allogeneic animals. *Blood*. 2003;102:3837–44.
37. Cao W, Cao K, Cao J, Wang Y, Shi Y. Mesenchymal stem cells and adaptive immune responses. *Immunol Lett*. 2015;168:147–53.
38. Aggarwal S, Pittenger MF. Human mesenchymal stem cells modulate allogeneic immune cell responses. *Blood*. 2005;105:1815–22.
39. Di Nicola M, Carlo-Stella C, Magni M, Milanese M, Longoni PD, Matteucci P, et al. Human bone marrow stromal cells suppress T-lymphocyte proliferation induced by cellular or nonspecific mitogenic stimuli. *Blood*. 2002;99:3838–43.
40. Bartholomew A, Sturgeon C, Siatskas M, Ferrer K, McIntosh K, Patil S, et al. Mesenchymal stem cells suppress lymphocyte proliferation in vitro and prolong skin graft survival in vivo. *Exp Hematol*. 2002;30:42–8.
41. Najjar M, Raicevic G, Fayyad-Kazan H, Bron D, Toungouz M, Lagneaux L. Mesenchymal stromal cells and immunomodulation: a gathering of regulatory immune cells. *Cytotherapy*. 2016;18:160–71.
42. Luz-Crawford P, Kurte M, Bravo-Alegria J, Contreras R, Nova-Lamperti E, Tejedor G, et al. Mesenchymal stem cells generate a CD4+CD25+Foxp3+ regulatory T cell population during the differentiation process of Th1 and Th17 cells. *Stem Cell Res Ther*. 2013;4:65.
43. Corcione A, Benvenuto F, Ferretti E, Giunti D, Cappiello V, Cazzanti F, et al. Human mesenchymal stem cells modulate B-cell functions. *Blood*. 2006;107:367–72.
44. Spaggiari GM, Capobianco A, Becchetti S, Mingari MC, Moretta L. Mesenchymal stem cell-natural killer cell interactions: evidence that activated NK cells are capable of killing MSCs, whereas MSCs can inhibit IL-2-induced NK-cell proliferation. *Blood*. 2006;107:1484–90.
45. Sotiropoulou PA, Perez SA, Gritzapis AD, Baxevasis CN, Papamichail M. Interactions between human mesenchymal stem cells and natural killer cells. *Stem Cells*. 2006;24:74–85.
46. Jiang XX, Zhang Y, Liu B, Zhang SX, Wu Y, Yu XD, et al. Human mesenchymal stem cells inhibit differentiation and function of monocyte-derived dendritic cells. *Blood*. 2005;105:4120–6.
47. Djouad F, Charbonnier L-M, Bouffi C, Louis-Plence P, Bony C, Apparailly F, et al. Mesenchymal stem cells inhibit the differentiation of dendritic cells through an interleukin-6-dependent mechanism. *Stem Cells*. 2007;25:2025–32.
48. Németh K, Leelahavanichkul A, Yuen PST, Mayer B, Parmelee A, Doi K, et al. Bone marrow stromal cells attenuate sepsis via prostaglandin E2-dependent reprogramming of host macrophages to increase their interleukin-10 production. *Nat Med*. 2009;15:42–9.
49. Kim J, Hematti P. Mesenchymal stem cell-educated macrophages: a novel type of alternatively activated macrophages. *Exp Hematol*. 2009;37:1445–53.
50. Rasmuson I, Ringdén O, Sundberg B, Le Blanc K. Mesenchymal stem cells inhibit lymphocyte proliferation by mitogens and alloantigens by different mechanisms. *Exp Cell Res*. 2005;305:33–41.
51. Selmani Z, Naji A, Zidi I, Favier B, Gaiffe E, Obert L, et al. Human leukocyte antigen-g5 secretion by human mesenchymal stem cells is required to suppress T lymphocyte and natural killer function and to induce CD4+CD25 high FOXP3+ regulatory T cells. *Stem Cells*. 2008;26:212–22.
52. Casiraghi F, Perico N, Remuzzi G. Mesenchymal stromal cells for tolerance induction in organ transplantation. *Hum Immunol*. 2018;79:304–13.
53. Djouad F, Bouffi C, Ghannam S, Noël D, Jorgensen C. Mesenchymal stem cells: innovative therapeutic tools for rheumatic diseases. *Nat Rev Rheumatol*. 2009;5:392–9.
54. Luz-Crawford P, Ipseiz N, Espinosa-Carrasco G, Caicedo A, Tejedor G, Toupet K, et al. PPAR β/δ directs the therapeutic potential of mesenchymal stem cells in arthritis. *Ann Rheum Dis*. 2016;75:2166–74.
55. Ren G, Zhang L, Zhao X, Xu G, Zhang Y, Roberts AI, et al. Mesenchymal stem cell-mediated immunosuppression occurs via concerted action of chemokines and nitric oxide. *Cell Stem Cell*. 2008;2:141–50.
56. Quaedackers ME, Baan CC, Weimar W, Hoogduijn MJ. Cell contact interaction between adipose-derived stromal cells and allo-activated T lymphocytes. *Eur J Immunol*. 2009;39:3436–46.
57. Caplan AL, Correa D. The MSC: an injury drugstore. *Cell Stem Cell*. 2011;9:11–5.
58. Meisel R, Zibert A, Laryea M, Göbel U, Däubener W, Dilloo D. Human bone marrow stromal cells inhibit allogeneic T-cell responses by indoleamine 2,3-dioxygenase-mediated tryptophan degradation. *Blood*. 2004;103:4619–21.
59. Spaggiari GM, Abdelrazik H, Becchetti F, Moretta L. MSCs inhibit monocyte-derived DC maturation and function by selectively interfering with the generation of immature DCs: central role of MSC-derived prostaglandin E2. *Blood*. 2009;113:6576–83.
60. English K, Ryan JM, Tobin L, Murphy MJ, Barry FP, Mahon BP. Cell contact, prostaglandin E2 and transforming growth factor beta 1 play non-redundant roles in human mesenchymal stem cell induction of CD4+CD25Highforkhead box P3+ regulatory T cells. *Clin Exp Immunol*. 2009;156:149–60.
61. Sato K, Ozaki K, Oh I, Meguro A, Hatanaka K, Nagai T, et al. Nitric oxide plays a critical role in suppression of T-cell proliferation by mesenchymal stem cells. *Blood*. 2007;109:228–34.
62. Mougiakakos D, Jitschin R, Johansson CC, Okita R, Kiessling R, Le Blanc K. The impact of inflammatory licensing on heme oxygenase-1-mediated induction of regulatory T cells by human mesenchymal stem cells. *Blood*. 2011;117:4826–35.
63. Rouger K, Larcher T, Dubreil L, Deschamps J-Y, Le Guiner C, Jouvion G, et al. Systemic delivery of allogeneic muscle stem cells induces long-term muscle repair and clinical efficacy in duchenne muscular dystrophy dogs. *Am J Pathol*. 2011;179:2501–18.
64. Lorant J, Saury C, Schleder C, Robriquet F, Lieubeau B, Négroni E, et al. Skeletal muscle regenerative potential of human MuStem cells following transplantation into injured mice muscle. *Mol Ther*. 2018;26:618–33.
65. Lorant J, Larcher T, Jaulin N, Hedan B, Lardenois A, Leroux I, et al. Vascular delivery of allogeneic MuStem cells in dystrophic dogs requires only short-term immunosuppression to avoid host immunity and generate clinical/tissue benefits. *Cell Transplant*. 2018;27:1096–110.
66. Rannou A, Toumaniantz G, Larcher T, Leroux I, Ledevin M, Hivonnait A, et al. Human MuStem cell grafting into infarcted rat heart attenuates adverse tissue remodeling and preserves cardiac function. *Mol Ther Methods Clin Dev*. 2020;18:446–63.
67. Robriquet F, Lardenois A, Babarit C, Larcher T, Dubreil L, Leroux I, et al. Differential gene expression profiling of dystrophic dog muscle after MuStem cell transplantation. *PLoS ONE*. 2015;10:1–24.
68. Djouad F, Bony C, Häupl T, Uzé G, Lahlou N, Louis-Plence P, et al. Transcriptional profiles discriminate bone marrow-derived and synovium-derived mesenchymal stem cells. *Arthritis Res Ther BioMed Central*. 2005;7:1304–15.

69. Maria ATJ, Toupet K, Maumus M, Fonteneau G, Le Quellec A, Jorgensen C, et al. Human adipose mesenchymal stem cells as potent anti-fibrosis therapy for systemic sclerosis. *J Autoimmun.* 2016;70:31–9.
70. Roulois D, Vignard V, Gueugnon F, Labarrière N, Grégoire M, Fonteneau JF. Recognition of pleural mesothelioma by mucin-1(950–958)/human leukocyte antigen A*0201-specific CD8+ T-cells. *Eur Respir J.* 2011;38:1117–26.
71. Blondy T, D'Almeida SM, Briolay T, Tabiasco J, Meiller C, Chéné AL, et al. Involvement of the M-CSF/IL-34/CSF-1R pathway in malignant pleural mesothelioma. *J Immunother Cancer.* 2020;8:e000182.
72. Schindelin J, Arganda-Carreras I, Frise E, Kaynig V, Longair M, Pietzsch T, et al. Fiji: an open-source platform for biological-image analysis. *Nat Methods.* 2012;9:676–82.
73. Najar M, Raicevic G, Kazan HF, de Bruyn C, Bron D, Toungouz M, et al. Immune-related antigens, surface molecules and regulatory factors in human-derived mesenchymal stromal cells: the expression and impact of inflammatory priming. *Stem Cell Rev Rep.* 2012;8:1188–98.
74. Majumdar MK, Keane-Moore M, Buyaner D, Hardy WB, Moorman MA, McIntosh KR, et al. Characterization and functionality of cell surface molecules on human mesenchymal stem cells. *J Biomed Sci.* 2003;10:228–41.
75. Saury C, Lardenois A, Schleder C, Leroux I, Lieubeau B, David L, et al. Human serum and platelet lysate are appropriate xeno-free alternatives for clinical-grade production of human MuStem cell batches. *Stem Cell Res Ther.* 2018;9:1–20.
76. Li H, Wang W, Wang G, Hou Y, Xu F, Liu R, et al. Interferon- γ and tumor necrosis factor- α promote the ability of human placenta-derived mesenchymal stromal cells to express programmed death ligand-2 and induce the differentiation of CD4+interleukin-10+ and CD8+interleukin-10+Treg subsets. *Cytotherapy.* 2015;17:1560–71.
77. Anderson AC, Joller N, Kuchroo VK. Functions in immune regulation. *Immunity.* 2017;44:989–1004.
78. English K, Tonlorenzi R, Cossu G, Wood KJ. Mesoangioblasts suppress T cell proliferation through IDO and PGE-2-dependent pathways. *Stem Cells Dev.* 2013;22:512–23.
79. Luz-Crawford P, Noël D, Fernandez X, Khoury M, Figueroa F, Carrión F, et al. Mesenchymal stem cells repress Th17 molecular program through the PD-1 pathway. *PLoS ONE.* 2012;7:e45272.
80. Davies LC, Heldring N, Kadri N, Le Blanc K. Mesenchymal stromal cell secretion of programmed death-1 ligands regulates T cell mediated immunosuppression. *Stem Cells.* 2017;35:766–76.
81. Wang G, Zhang S, Wang F, Li G, Zhang L, Luan X. Expression and biological function of programmed death ligands in human placenta mesenchymal stem cells. *Cell Biol Int.* 2013;37:137–48.
82. Okazaki T, Honjo T. The PD-1-PD-L pathway in immunological tolerance. *Trends Immunol.* 2006;27:195–201.
83. Bromley SK, Burack WR, Johnsonn KG, Somersalo K, Sims TN, Sumen C, et al. The immunological synapse. *Annu Rev Immunol.* 2001;19:375–96.
84. Ren G, Zhao X, Zhang L, Zhang J, L'Huillier A, Ling W, et al. Inflammatory cytokine-induced intercellular adhesion molecule-1 and vascular cell adhesion molecule-1 in mesenchymal stem cells are critical for immunosuppression. *J Immunol.* 2010;184:2321–8.
85. Espagnolle N, Balguerie A, Arnaud E, Sensebé L, Varin A. CD54-mediated interaction with pro-inflammatory macrophages increases the immunosuppressive function of human mesenchymal stromal cells. *Stem Cell Rep.* 2017;8:961–76.
86. Yang ZX, Han ZB, Ji YR, Wang YW, Liang L, Chi Y, et al. CD106 identifies a subpopulation of mesenchymal stem cells with unique immunomodulatory properties. *PLoS ONE.* 2013;8:1–12.
87. Le Blanc K, Tammik L, Sundberg B, Haynesworth SE, Ringden O. Mesenchymal stem cells inhibit and stimulate mixed lymphocyte cultures and mitogenic responses independently of the major histocompatibility complex. *Scand J Immunol.* 2003;57:11–20.
88. English K. Mechanisms of mesenchymal stromal cell immunomodulation. *Immunol Cell Biol.* 2013;91:19–26.
89. Najar M, Raicevic G, Boufker HI, Kazan HF, De BC, Meuleman N, et al. Mesenchymal stromal cells use PGE2 to modulate activation and proliferation of lymphocyte subsets: combined comparison of adipose tissue, Wharton's Jelly and bone marrow sources. *Cell Immunol.* 2010;264:171–9.
90. Ren G, Su J, Zhang L, Zhao X, Ling W, L'Huillier A, et al. Species variation in the mechanisms of mesenchymal stem cell-mediated immunosuppression. *Stem Cells.* 2009;27:1954–62.
91. Rasmusson I, Ringdén O, Sundberg B, Le Blanc K. Mesenchymal stem cells inhibit the formation of cytotoxic T lymphocytes, but not activated cytotoxic T lymphocytes or natural killer cells. *Transplantation.* 2003;76:1208–13.
92. Einarsdottir T, Lockhart E, Flynn JAL. Cytotoxicity and secretion of gamma interferon are carried out by distinct CD8 T cells during Mycobacterium tuberculosis infection. *Infect Immun.* 2009;77:4621–30.
93. Nasef A, Mazurier C, Bouchet S, François S, Chapel A, Thierry D, et al. Leukemia inhibitory factor: role in human mesenchymal stem cells mediated immunosuppression. *Cell Immunol.* 2008;253:16–22.
94. Najar M, Raicevic G, Boufker HI, Fayyad-Kazan H, De Bruyn C, Meuleman N, et al. Adipose-tissue-derived and Wharton's jelly-derived mesenchymal stromal cells suppress lymphocyte responses by secreting leukemia inhibitory factor. *Tissue Eng Part A.* 2010;16:3537–46.
95. Fonteneau JF, Larsson M, Somersan S, Sanders C, Münz C, Kwok WW, et al. Generation of high quantities of viral and tumor-specific human CD4+ and CD8+ T-cell clones using peptide pulsed mature dendritic cells. *J Immunol Methods.* 2001;258:111–26.
96. Gueugnon F, Leclercq S, Blanquart C, Sagan C, Cellerin L, Padiou M, et al. Identification of novel markers for the diagnosis of malignant pleural mesothelioma. *Am J Pathol.* 2011;178:1033–42.

Publisher's Note

Springer Nature remains neutral with regard to jurisdictional claims in published maps and institutional affiliations.

Ready to submit your research? Choose BMC and benefit from:

- fast, convenient online submission
- thorough peer review by experienced researchers in your field
- rapid publication on acceptance
- support for research data, including large and complex data types
- gold Open Access which fosters wider collaboration and increased citations
- maximum visibility for your research: over 100M website views per year

At BMC, research is always in progress.

Learn more biomedcentral.com/submissions

