



HAL
open science

European Stroke Organisation (ESO)–European Society for Minimally Invasive Neurological Therapy (ESMINT) expedited recommendation on indication for intravenous thrombolysis before mechanical thrombectomy in patients with acute ischemic stroke and anterior circulation large vessel occlusion

Guillaume Turc, Georgios Tsivgoulis, Heinrich J Audebert, Hieronymus Boogaarts, Pervinder Bhogal, Gian Marco de Marchis, Ana Catarina Fonseca, Pooja Khatri, Mikaël Mazighi, Natalia Pérez de La Ossa, et al.

► **To cite this version:**

Guillaume Turc, Georgios Tsivgoulis, Heinrich J Audebert, Hieronymus Boogaarts, Pervinder Bhogal, et al.. European Stroke Organisation (ESO)–European Society for Minimally Invasive Neurological Therapy (ESMINT) expedited recommendation on indication for intravenous thrombolysis before mechanical thrombectomy in patients with acute ischemic stroke and anterior circulation large vessel occlusion. *Journal of Neurointerventional Surgery*, 2022, pp.neurintsurg-2021-018589. 10.1136/neurintsurg-2021-018589 . inserm-03559863

HAL Id: inserm-03559863

<https://inserm.hal.science/inserm-03559863v1>

Submitted on 7 Feb 2022

HAL is a multi-disciplinary open access archive for the deposit and dissemination of scientific research documents, whether they are published or not. The documents may come from teaching and research institutions in France or abroad, or from public or private research centers.

L'archive ouverte pluridisciplinaire **HAL**, est destinée au dépôt et à la diffusion de documents scientifiques de niveau recherche, publiés ou non, émanant des établissements d'enseignement et de recherche français ou étrangers, des laboratoires publics ou privés.

European Stroke Organisation (ESO) – European Society for Minimally Invasive Neurological Therapy (ESMINT) expedited recommendation on indication for intravenous thrombolysis before mechanical thrombectomy in patients with acute ischaemic stroke and anterior circulation large vessel occlusion

Guillaume Turc¹, Georgios Tsivgoulis^{2,3}, Heinrich J. Audebert⁴, Hieronymus Boogaarts⁵, Pervinder Bhogal⁶, Gian Marco De Marchis⁷, Ana Catarina Fonseca⁸, Pooja Khatri⁹, Mikael Mazighi^{10,11}, Natalia Pérez de la Ossa¹², Peter D. Schellinger¹³, Daniel Strbian¹⁴, Danilo Toni¹⁵, Philip White¹⁶, William Whiteley¹⁷, Andrea Zini¹⁸, Wim van Zwam¹⁹, and Jens Fiehler²⁰

Affiliations:

¹ Department of Neurology, GHU Paris Psychiatrie et Neurosciences, Université de Paris, INSERM U1266, FHU NeuroVasc, Paris, France. ORCID: 0000-0001-5059-4095

² Second Department of Neurology, Attikon University Hospital, School of Medicine, National and Kapodistrian University of Athens, Athens, Greece. ORCID: 0000-0002-0640-3797

³ Department of Neurology, University of Tennessee Health Science Center, Memphis, Tennessee, USA

⁴ Klinik und Hochschulambulanz für Neurologie, Campus Benjamin Franklin, Charité Universitätsmedizin Berlin & Center for Stroke Research Berlin, Berlin, Germany.

⁵ Department of Neurosurgery, Radboud University Medical Center, Nijmegen, The Netherlands. ORCID: 0000-0001-5855-2447

⁶ Department of Interventional Neuroradiology, Royal London hospital, Barts NHS Trust, London, UK. ORCID: 0000-0002-5514-5237

⁷ Neurology and Stroke Center, University Hospital of Basel, University of Basel, Basel, Switzerland, ORCID: 0000-0002-0342-9780

⁸ Department of Neurosciences and Mental Health (Neurology), Hospital Santa Maria-CHLN, Faculdade de Medicina, Universidade de Lisboa, Lisboa, Portugal. ORCID: 0000-0001-6913-5526

⁹ Department of Neurology, University of Cincinnati, Cincinnati, OH, USA. ORCID: 0000-0002-7344-8266

¹⁰ Department of Interventional Neuroradiology, Rothschild Foundation Hospital, Paris, France

¹¹ Stroke Unit, Lariboisière Hospital, AP-HP-Nord, FHU NeuroVasc, Université de Paris, INSERM U 1148, Paris, France. ORCID: 000-0003-0911-8999.

¹² Stroke Unit, Department of Neurology, Germans Trias i Pujol Hospital, Badalona, Spain

¹³ Departments of Neurology and Neurogeriatrics, Johannes Wesling Medical Center Minden, University hospitals of the Ruhr-University of Bochum, Bochum, Germany

¹⁴ Department of Neurology, Helsinki University Hospital and University of Helsinki, Helsinki, Finland

¹⁵ Hospital Policlinico Umberto I, Department of Human Neurosciences, Sapienza University of Rome, Rome, Italy

¹⁶ Translational and Clinical Research Institute, Newcastle University, UK & Newcastle upon Tyne Hospitals NHS Foundation Trust, United Kingdom. ORCID: 0000-0001-6007-6013

¹⁷ Centre for Clinical Brain Sciences, University of Edinburgh, Edinburgh, United Kingdom. ORCID: 0000-0002-4816-8991

¹⁸ IRCCS Istituto delle Scienze Neurologiche di Bologna, Department of Neurology and Stroke Center, Maggiore Hospital, Bologna, Italy. ORCID: 0000-0003-1486-4507

¹⁹ Department of Radiology and Nuclear Medicine, Maastricht University Medical Center and Cardiovascular Research Institute Maastricht (CARIM), Maastricht, The Netherlands. ORCID: 0000-0003-1631-7056

²⁰ Department of Diagnostic and Interventional Neuroradiology, University Medical Center Hamburg-Eppendorf, Hamburg, Germany. ORCID: 0000-0001-8533-7478

Correspondence:

Prof. Guillaume Turc,

GHU Paris Psychiatrie et Neurosciences Site Sainte-Anne,

1 rue Cabanis 75014 Paris, France

+33 1 45 65 85 65

g.turc@ghu-paris.fr

Key words: ischaemic stroke; thrombolysis; thrombectomy; endovascular therapy;
recommendations

Word count: 11003 (excluding title page, abstract, and references)

Number of tables: 5

Number of figures: 12

Abstract

Six randomized controlled clinical trials have assessed whether mechanical thrombectomy (MT) alone is non-inferior to intravenous thrombolysis (IVT) plus MT within 4.5 hours of symptom onset in patients with anterior circulation large vessel occlusion (LVO) ischaemic stroke and no contraindication to IVT. An expedited recommendation process was initiated by the European Stroke Organisation (ESO) and conducted with the European Society of Minimally Invasive Neurological Therapy (ESMINT) according to ESO standard operating procedure based on the GRADE system. We identified two relevant Population, Intervention, Comparator, Outcome (PICO) questions, performed systematic reviews and meta-analyses of the literature, assessed the quality of the available evidence, and wrote evidence-based recommendations. Expert opinion was provided if insufficient evidence was available to provide recommendations based on the GRADE approach.

For stroke patients with anterior circulation LVO directly admitted to a MT-capable centre (“mothership”) within 4.5 hours of symptom onset and eligible for both treatments, we recommend IVT plus MT over MT alone (moderate evidence, strong recommendation). MT should not prevent the initiation of IVT, nor should IVT delay MT. In stroke patients with anterior circulation LVO admitted to a centre without MT facilities and eligible for IVT ≤ 4.5 hrs and MT, we recommend IVT followed by rapid transfer to a MT capable-centre (“drip-and-ship”) in preference to omitting IVT (low evidence, strong recommendation). Expert consensus statements on ischaemic stroke on awakening from sleep are also provided. Patients with anterior circulation LVO stroke should receive IVT in addition to MT if they have no contraindications to either treatment.

Introduction

Intravenous thrombolysis (IVT) with alteplase was the first acute ischaemic stroke reperfusion therapy proven to be effective; initially within 3 hours¹ and later within 4.5 hours,² and was more recently proven for patients with ischaemic stroke upon awakening.^{3,4} This evidence led to the evolution of an effective infrastructure for acute stroke care in Europe and elsewhere. Upon this established infrastructural backbone, mechanical thrombectomy (MT) showed encouraging results in single arm studies and subsequently was proven to have a major therapeutic effect in several randomized controlled clinical trials (RCTs), demonstrating the superiority of MT combined with IVT (“bridging therapy”) over IVT alone in patients with a large vessel occlusion (LVO). Among patients with acute ischaemic stroke and no contraindications to IVT, bridging therapy is the standard treatment for LVO within the first 4.5 hours after symptom onset.⁵

With accumulating experience and the proven effectiveness of MT even in patients with IVT contraindications, it was highly relevant to assess whether MT as a stand-alone therapy would be sufficient even in patients eligible for IVT. Within the last months, four RCTs have been published comparing MT alone (direct MT) with bridging therapy.⁶⁻⁹ An early meta-analysis suggested that MT alone may be non-inferior to MT plus IVT with alteplase but this conclusion was not based on stringent non-inferiority margins and only included data from the first three RCTs.¹⁰ After the recent presentation of the results of the SWIFT DIRECT and DIRECT-SAFE trials and without further RCTs on this topic to be presented in the near future,^{11,12} the time appeared appropriate for ESO and ESMINT to coordinate and publish an expedited recommendation on the role of IVT before MT.

Methods

This joint expedited recommendation was initiated by ESO and prepared according to the ESO standard operating procedure,^{13,14} which is based on the Grading of Recommendations, Assessment, Development and Evaluations (GRADE) system.¹⁵ The ESO and ESMINT Guideline Boards and Executive Committees reviewed the intellectual and financial disclosures of all module working group (MWG) members (Supplemental Table 1) and approved the composition of the group, which was chaired by Guillaume Turc and Jens Fiehler.

The steps undertaken by the MWG are summarized as follows:

1. The single topic of whether IVT should be administered before MT in patients with LVO acute ischaemic stroke was considered in this expedited recommendation. However, the MWG deemed it to be important to consider separately the role of IVT in those patients directly admitted to a thrombectomy-capable centre ('mothership') versus those admitted to a stroke unit without thrombectomy facilities ('drip-and-ship' paradigm); this is because the average time between start of IVT infusion and arterial puncture differs markedly between these two treatment paradigms.
2. A list of relevant outcomes was produced and rated by each MWG member using secret ballot voting on a scale from 1 (not important) to 9 (extremely important). The mean value for each outcome is reported below. According to GRADE, five outcomes were considered to be of critical importance (mean score of 7-9).
 - Good [clinical] outcome,¹⁶ defined as 90-day modified Rankin Scale [mRS] scores 0-2: 8.8
 - Reduced disability¹⁶ (≥ 1 -point reduction across all mRS-scores at 90 days): 7.7
 - Excellent outcome,¹⁶ defined as 90-day mRS scores 0-1: 7.6

- Symptomatic intracranial haemorrhage (sICH): 7.2
- Mortality at 90 days: 7.0
- Successful reperfusion (modified Treatment In Cerebral Ischaemia [mTICI] score $\geq 2b$) at the end of the endovascular procedure: 6.4
- Time between symptom onset and successful reperfusion: 5.5
- Time between door and successful reperfusion: 5.3
- Distal embolization or embolization in a new territory: 5.3
- First-pass complete reperfusion: 5.1
- Time between arterial puncture and reperfusion: 5.1
- Time between symptom onset and arterial puncture: 4.9
- Time between door and arterial puncture: 4.9
- Infarct volume at 24-36hrs defined by expert neuroradiologists: 4.9
- Any ICH: 4.6
- Number of passes: 3.8

Based on this expert vote, good outcome (mRS 0-2 at 90 days) was defined as the outcome of highest priority and was considered first. Unless specified otherwise, reduced disability¹⁶ corresponded to a reduction of at least one point in the mRS score at 90 days across all mRS grades (“shift analysis”). sICH was defined according to each study’s original criterion. In the case of limited data for the outcomes of highest importance, outcomes of lesser importance were also considered.

3. The MWG formulated a list of Population, Intervention, Comparator, Outcome (PICO) questions, which were reviewed and subsequently approved by external reviewers and members of the ESO and ESMINT Guidelines boards and Executive Committees.

4. The recommendation for the first PICO question was based on a systematic review of RCTs of direct MT versus bridging therapy. To this aim, we have updated the results of a previously published systematic review that was conducted up to January 2021.¹⁰ We have applied the same search strategy for a period from January 2021 to December 2021. We have also included results of RCTs presented at international conferences but that were not published at the time of preparation of this document. For the second PICO question, no RCT was available. We have therefore included non-randomized studies identified in a recent systematic review in our quantitative synthesis.¹⁷
5. The risk of bias in each RCT was assessed using the Cochrane's collaboration Risk of Bias 2 (RoB2) tool.¹⁸
6. Whenever appropriate, random-effects meta-analyses were conducted using Stata software version 16.0 (Statacorp). Results were summarized as odds ratio (ORs), or common Odds Ratios (cOR) with their 95% confidence intervals (CIs). For mRS-related outcomes, risk ratios (RRs) were used as summary measures in sensitivity analyses. Heterogeneity across studies was assessed using the I^2 statistic. Heterogeneity was classified as low ($I^2 < 30\%$), moderate ($I^2 \geq 30\%$), substantial ($I^2 \geq 50\%$), or considerable ($I^2 \geq 75\%$).
7. Before statistical analyses were conducted the MWG decided that the assessment of non-inferiority would be based on the absolute difference ("risk difference" [RD]) in the proportions of patients achieving good outcome between the two treatment groups (MT alone versus bridging therapy, the latter being the reference group). A non-inferiority margin was chosen via secret ballot voting. The minimal and maximal values for a non-inferiority margin advocated by MWG members were 1% and 5%,

respectively. A majority (10/18) of MWG members voted for a margin of 1.3%, which corresponds to the median minimal clinically important difference (MCID) in a survey of U.S. stroke neurologists.¹⁹ Therefore, we prespecified that for the present expedited recommendation, non-inferiority would be met if the lower 95% CI boundary of the random-effects pooled RD was superior or equal to -1.3%. For the main analysis, random-effects pooled RD was calculated using the DerSimonian and Laird method.²⁰ We also conducted two sensitivity analyses to calculate the pooled RD. The first one was based on (i) the random-effects pooled proportion of patients with good outcome in the bridging therapy arm and (ii) the random-effects pooled RR (95% CI) for good outcome. The second sensitivity analysis corresponded to the calculation of a fixed-effect pooled RD (inverse variance method). No p-value for non-inferiority was computed.

8. The results of data analyses were imported into the GRADEpro Guideline Development Tool (McMaster University, 2015; developed by Evidence Prime, Inc.). For each PICO question and each outcome, the risk of bias was assessed and the quality of evidence was rated as high, moderate, low or very low based on the type of available evidence (randomized or observational studies) and considerations on inconsistency of results, indirectness of evidence, imprecision of results, and risk of bias.¹⁵ GRADE evidence profiles/summary of findings tables were generated using GRADEPro.
9. As per ESO standard operating procedure, each PICO question was addressed by writing up to three distinct paragraphs. First, a paragraph named “Analysis of current evidence”, in which the results of the dedicated RCTs were summarized and briefly discussed. Where no RCT was available, this paragraph described results of systematic reviews of non-randomized studies. At the end of the first paragraph, an evidence-based

recommendation was provided, based on the GRADE methodology. The direction, the strength and the formulation of the recommendation were determined according to the GRADE evidence profiles and the ESO standard operating procedure. Second, an “Additional information” paragraph could be added to provide more details on randomized trials mentioned in the first paragraph, to summarize results of observational studies, or to provide information on ongoing or future trials. Third, according to the revised ESO standard operating procedure,¹⁴ an “Expert consensus statement” paragraph was added whenever the PICO group deemed that the available evidence was insufficient to provide evidence-based recommendations for situations in which practical guidance is needed for routine clinical practice. In that particular case, a pragmatic suggestion was provided. Importantly, the suggestions provided in this paragraph should not be mistaken as evidence-based recommendations.

10. The present document was subsequently reviewed several times by all MWG members, and iteratively modified until a consensus was reached. Finally, the document was reviewed and approved by external reviewers and members of the ESO and ESMINT Guideline Boards and Executive Committees.

Results

Patients admitted to a thrombectomy-capable centre

(“Mothership” paradigm)

PICO 1: For large vessel occlusion acute ischaemic stroke (≤ 4.5 hrs of symptom onset) patients directly admitted to a thrombectomy capable centre and eligible for both treatments, does mechanical thrombectomy alone compared with intravenous thrombolysis plus mechanical thrombectomy lead to:

- a) a non-inferior proportion of patients with good outcome (mRS 0-2) at 90 days?**
- b) non-inferior or better results on other efficacy outcomes (whole range of the mRS; mRS 0-1; successful reperfusion)?**
- c) a reduction in the risk of adverse events (mortality at 90 days, sICH, any ICH)?**
- d) a reduction in key time metrics?**

Analysis of current evidence

The literature search identified four published RCTs addressing this PICO question. We also included the results of two unpublished RCTs which were recently presented at international conferences (Tables 1 and 2).

The first published trial was Direct Intraarterial Thrombectomy in Order to Revascularize Acute Ischemic Stroke Patients with Large Vessel Occlusion Efficiently in Chinese Tertiary Hospitals Multicenter Randomized Clinical Trial (DIRECT-MT), which compared direct MT alone versus MT preceded by IVT with alteplase (0.9 mg/kg) administered within 4.5 hours after stroke onset in patients with anterior circulation LVO.⁶ A total of 654 LVO (ICA, M1 & M2 occlusions) patients from 41 academic tertiary care centres in China were analysed. The primary

analysis was based on reduced disability (≥ 1 -point reduction across all mRS-scores at 90 days) and non-inferiority was defined on the basis of a lower boundary of the 95% CI of the corresponding adjusted common odds ratio equal to or larger than 0.80. This predefined criterion was met (adjusted cOR mRS 1.07, 95% CI 0.81-1.40; $p=0.04$ for non-inferiority). However, this non-inferiority margin was very liberal and the wide confidence interval included both important harms and important benefits for either strategy. Furthermore, the comparison was confounded by time to treatments; a long door-to-IVT time (median 59 min) and a very short delay from start of IVT to groin puncture (median approximately 27 min) were documented in the bridging therapy group. In addition, the Chinese healthcare system requires initial self-pay for alteplase, followed by reimbursement from insurance when available to the patient.²¹ This may have resulted in a delay in consenting the patient, thereby delaying the door-to-IVT time (median 59 min). Moreover, in the bridging therapy group, 31 patients did not receive MT and an additional 30 patients did not receive any or the full-dose of alteplase. In addition, multiple protocol violations (e.g., missing baseline CT angiography, lack of proof of occlusion on baseline CT angiography, crossovers between treatment arms) were not addressed in the published per-protocol analysis of the trial.²² The proportion of patients with successful reperfusion after thrombectomy (eTICI $\geq 2b$) was 79.4% vs. 84.5% (OR 0.70, 95% CI 0.47-1.06) in the direct MT and the bridging therapy groups, respectively. sICH occurred in 4.3% and 6.1% of patients in the direct MT and bridging therapy groups, respectively (Risk Ratio 0.70, 95% CI 0.36–1.37).

In the Direct Endovascular Thrombectomy vs Combined IVT and Endovascular Thrombectomy for Patients with Acute Large Vessel Occlusion in the Anterior Circulation (DEVT) trial, patients with LVO (ICA & M1 occlusions) acute ischaemic stroke eligible for

IVT were enrolled in 33 tertiary stroke centres in China and randomized within 4.25 hours of symptom onset to MT alone or bridging therapy with alteplase 0.9 mg/kg. The primary endpoint was the proportion of patients achieving good outcome at 90 days (mRS 0-2). The chosen non-inferiority margin in DEVT was an absolute difference of 10%. The trial was stopped after randomization of 234 of 970 planned patients because non-inferiority was demonstrated. At 90 days 63 (54.3%) patients in the direct MT group and 55 (46.6%) in the bridging therapy group achieved a good outcome (difference, 7.7%, one-sided 97.5% CI, -5.1% to ∞ , P for non-inferiority = 0.003). No significant between-group differences in 90-day mortality (17.2% vs 17.8%; difference, -0.5% ; 95% CI, -10.3% to 9.2%) and sICH (6.1% vs 6.8%; difference, -0.8% ; 95% CI, -7.1% to 5.6%) were observed. The proportion of patients with successful reperfusion after MT (eTICI $\geq 2b$) was 88.5% vs. 87.2% (adjusted OR 1.14, 95% CI 0.50-2.61) in the direct MT and the bridging therapy groups, respectively. DEVT shares similar limitations with DIRECT-MT, including a generous non-inferiority margin and the Chinese reimbursement protocols before receiving alteplase as part of routine or study care. Again, the door-to-IVT time was long (median 61 min), although onset to groin puncture times were similar between groups (200 versus 210 minutes).

In the Direct Mechanical Thrombectomy in Acute LVO Stroke (SKIP) trial, 204 patients with ICA or M1 occlusion acute ischaemic stroke eligible for IVT were enrolled in 23 MT-capable stroke centres in Japan and randomized to MT alone or bridging therapy with alteplase at the dose of 0.6 mg/kg within 4.5 hours of onset.⁷ The primary endpoint was the proportion of patients achieving good outcome at 90 days (mRS 0-2), with a non-inferiority margin OR of 0.74 (lower boundary of the confidence interval), assessed using a 1-sided significance threshold of 0.025 (97.5% CI). SKIP did not demonstrate non-inferiority of direct MT vs.

bridging therapy (59.4% vs. 57.3%, OR 1.09, one-sided 97.5%CI 0.63 to ∞ , one-sided p-value for non-inferiority=0.18). Mortality at 90 days (7.9% vs. 8.7%) and sICH according to the SITS-MOST definition (5.9% vs. 7.7%) did not differ significantly between the two groups. The main limitations of this trial are the very liberal non-inferiority margin, the modest sample size, and the relatively long door-to-needle time probably delayed by patient consent and randomization. As a consequence, the time between IVT and arterial puncture was very short (median randomization-to-IVT and randomization-to-arterial puncture times of 14 and 22 min, respectively). Of particular note, arterial puncture was performed before the start of IVT in 22 (21.4%) patients in the bridging therapy group. The use of low-dose alteplase (0.6 mg/kg), which is not currently recommended in European and US Guidelines,^{23,24} also limits the generalisability of the SKIP results.

Unlike previous RCTs, the primary aim of the Multicenter Randomized CLinical trial of Endovascular treatment for Acute ischemic stroke in the Netherlands- NO IV (MR CLEAN-NO IV) was to assess the superiority of direct MT over bridging therapy with alteplase (0.9 mg/kg) based on the adjusted cOR for reduced disability (i.e. ≥ 1 -point reduction across all mRS-scores at 90 days).⁹ In the case that superiority could not be demonstrated, the lower boundary of the 95% CI of this cOR was prespecified as equal to or larger than 0.80 to claim non-inferiority (i.e., the same pre-specified margin as in the DIRECT-MT trial). A total of 539 patients with LVO (ICA, M1 & M2) acute ischaemic stroke eligible for IVT within 4.5 hrs of symptom onset were enrolled at 20 MT-capable stroke centres in the Netherlands, Belgium and France and included in the main analysis. MR CLEAN-NO IV failed to demonstrate both superiority and non-inferiority of direct MT over bridging therapy regarding functional outcome at 90 days (adjusted cOR 0.84, 95% CI 0.62 to 1.15). Similar results were observed

for secondary endpoints including dichotomizations of the mRS. Mortality (20.5% vs. 15.8%, adjusted OR 1.39, 95% CI: 0.84-2.30) and sICH (5.9% vs. 5.3%, adjusted OR 1.30, 95% CI 0.60-2.81) did not significantly differ between the direct MT and the bridging therapy groups. Finally, the rates of successful reperfusion on last angiographic run did not significantly differ between the two groups (78.7% vs. 83.1%, adjusted OR 0.73, 95% CI: 0.47-1.13).

The results of the Bridging Thrombolysis Versus Direct Mechanical Thrombectomy in Acute Ischemic Stroke (SWIFT-DIRECT) trial were presented during the European Stroke Organisation Conference 2021.¹¹ SWIFT-DIRECT sought to determine whether subjects experiencing an acute ischaemic stroke due to LVO in the anterior circulation (ICA & M1) would have a non-inferior functional outcome at 90 days when treated with direct MT compared to subjects treated with bridging thrombolysis with alteplase at 0.9 mg/kg within 4.5 hours of onset. The primary endpoint was the proportion of patients achieving good outcome (mRS 0-2 at 90 days). The non-inferiority margin was an absolute difference of 12%. The use of a Solitaire device was mandatory, although additional aspiration devices were allowed. A total of 408 LVO patients from 48 stroke centres in Europe and North America were included (201 in the direct MT group and 207 in the bridging therapy group). SWIFT-DIRECT did not demonstrate non-inferiority. At 90 days, 111 (56.7%) patients in the direct MT group and 135 (65.2%) in the bridging therapy group achieved good outcome (adjusted risk difference: -7.3%, lower limit of one-sided 95% CI: -15.1%). The adjusted cOR for reduced disability with direct MT was 0.75 (95% CI: 0.53-1.06). The rates of mortality at 90 days were similar in patients treated with direct MT (11.0%) and bridging therapy (8.5%). Patients with direct MT tended to have lower rates of sICH compared to the bridging therapy group (1.5% vs. 4.9%; p=0.09). Conversely,

the rate of successful post-interventional reperfusion was higher in the bridging therapy group (96 vs. 91%; $p=0.05$).

Finally, the results of DIRECT-SAFE (A Randomized Controlled Trial of DIRECT Endovascular Clot Retrieval Versus Standard Bridging Thrombolysis With Endovascular Clot Retrieval) were presented at the 2021 World Stroke Congress.¹² The aim of DIRECT-SAFE was to demonstrate the non-inferiority of direct MT over bridging therapy in patients with ICA, M1, M2 or basilar artery occlusion (the only one of the six RCTs to include any posterior circulation LVO). The primary trial outcome was good outcome defined as mRS 0-2 at 90 days or returning to pre-morbid mRS score, with a pre-specified absolute non-inferiority margin of -10%. The authors also hypothesized that clinical outcome would differ between patients enrolled in Asian vs. non-Asian regions. The use of a TREVO device was mandatory during the endovascular procedures. The study was terminated prematurely due to the publication of the results of DIRECT-MT, DEVT and SKIP. A total of 293 of 780 planned patients at 25 centres in Oceania and Asia were randomized and included in the intention-to-treat analysis. At 90 days, the primary outcome was achieved in 54.8% and 60.5% of patients in direct MT and bridging therapy groups, respectively. Non-inferiority was not demonstrated (intention-to-treat risk difference -5.1%, 95% CI -16.0 to 5.9, $p=0.19$). Mortality rates at 90 days were similar in patients treated with direct MT and bridging therapy (15.1 vs 16.3%; $p=0.46$). The rates of sICH did not significantly differ between the direct MT and the bridging therapy groups (2.7% vs. 4.8%; $p=0.38$). The rates of successful post-interventional reperfusion were also similar at 89% (direct MT) vs. 89% (bridging therapy); $p=0.66$. In subgroup analyses, compared with bridging therapy, direct MT was associated with lower rates of good outcome in patients randomized in

Asia compared with Oceania (adjusted OR 0.42, 95% CI 0.21 to 0.86 vs. 1.35, 95% CI 0.65 to 2.80, P for interaction = 0.02).

MWG assessment of the risk of bias in each RCT according to the Cochrane RoB-2 tool with regards to mRS score at 90 days is presented in Figure 1. All studies were considered to be at overall low risk of bias except: (i) DIRECT-MT, which had a high risk of bias due to deviations from the intended intervention, as detailed above; (ii) DEVT, due to concerns about a long door-to-IVT time, which are not in line with recommendations;²⁵ and (iii) SKIP, because more than 20% of patients in the bridging therapy group had arterial puncture before the start of IVT.

We conducted a study-level random-effects meta-analysis of the six RCTs of MT alone versus IVT plus MT, comprising 2331 patients. Compared with patients randomized to bridging therapy, the pooled unadjusted OR for good outcome in patients randomized to MT alone was 0.93 (95% CI 0.79 to 1.10, $p=0.38$; $I^2=0\%$; Figure 2). The corresponding pooled RR and risk difference were 0.96 (95% CI 0.89 to 1.04, $p=0.30$; $I^2=0\%$) and -1.9% (95% CI: -5.9% to 2.1%; Figure 3), respectively. Therefore, non-inferiority was not met based on our pre-specified 1.3% margin. Importantly though, non-inferiority was also not met based on the maximum clinically acceptable non-inferiority margin of 5.0% proposed by MWG members. Similar results were obtained when risk difference was estimated with the random-effects pooled proportion of good outcome in the bridging therapy group (52.8%) and the pooled RR for good outcome (risk difference: -2.1%, 95% CI -6.3% to 2.1%). Finally, in a sensitivity analysis based on a fixed effect model, the pooled risk difference was -1.9% (95% CI: -5.9% to 2.1%). The results did not significantly differ between studies conducted in Asia and in Europe/North America (Figure

4, P for heterogeneity=0.13). A more detailed analysis on the role of ethnicity and national health care systems on the effects of IVT would require individual patient-level data.

The common adjusted OR for reduced disability with MT alone was 0.92 (95% CI: 0.80 to 1.07; $p=0.27$; $I^2=0\%$; Figure 5). The pooled unadjusted OR for excellent outcome (mRS 0-1 at 90 days) was 0.99 (95% CI: 0.82 to 1.18; $p=0.88$; $I^2=0\%$). The rates of all-cause mortality at 90 days were similar in patients randomized to MT alone and bridging therapy (unadjusted pooled OR 1.06, 95% CI: 0.84 to 1.35; $p=0.60$; $I^2=0\%$; Figure 6). Successful reperfusion at the end of the endovascular procedure was significantly less frequent in patients randomized to MT alone (unadjusted pooled OR 0.72, 95% CI: 0.57 to 0.92, $p=0.01$, $I^2=0\%$; Figure 7). Symptomatic intracerebral haemorrhage did not significantly differ between treatment arms (unadjusted pooled OR 0.77, 95% CI: 0.52-1.13, $p=0.18$, $I^2=0\%$; Figure 8) but the occurrence of any ICH was less frequent in patients randomized to MT alone (unadjusted pooled OR 0.80, 95% CI: 0.66-0.96, $p=0.02$, $I^2=10\%$; Figure 9). Insufficient data were available to conduct analyses for the other predefined outcomes, including time metrics (Table 2).

Table 3 provides details regarding the assessment of the quality of evidence, which was judged to be moderate due to inconsistency, as two trials met their predefined criteria for non-inferiority,^{6,8} whereas the four remaining trials did not.^{7,9,11,12}

Evidence-base recommendation

For patients directly admitted to a thrombectomy-capable centre for an acute ischaemic stroke (≤ 4.5 hrs of symptom onset) with anterior circulation large vessel occlusion and who are eligible for both treatments, we recommend intravenous thrombolysis plus mechanical thrombectomy over mechanical thrombectomy alone.

Both treatments should be performed as early as possible after hospital arrival. Mechanical thrombectomy should not prevent the initiation of intravenous thrombolysis, and intravenous thrombolysis should not delay mechanical thrombectomy.

Quality of evidence: **Moderate** ⊕⊕⊕

Strength of recommendation: **Strong** ↑↑

Additional information

Two large meta-analyses of observational studies evaluating the safety and efficacy of bridging therapy compared to direct MT have suggested that bridging therapy is associated with higher rates of post-intervention successful recanalization, higher rates of 90-day good outcome, and lower rates of 90-day mortality without increased risk of symptomatic intracranial haemorrhage.^{17,26} Nevertheless, the results of these observational studies should be interpreted with caution because they are prone to selection bias (i.e. the majority of patients treated with direct MT had contraindications to alteplase) and residual confounding. Other meta-analyses including both RCTs and observational studies have also been published.²⁷⁻³⁰

For patients with LVO admitted within 6 hours after symptom onset, a recent RCT found that, compared with conventional workflow, the direct transfer to the angiography suite, and administration of alteplase in the suite if indicated, increased the odds of patients undergoing MT, decreased hospital workflow time, and improved clinical outcome.³¹

Expert consensus statement

The six recently published and presented RCTs studying the effect of IVT with alteplase prior to MT all included patients eligible for both treatments, and required IVT to be administered within 4.5 hrs of stroke onset.^{6-8,32,33} The results of these trials are therefore valid for patients who can be treated within this time window.

However, in 2018 and 2019, after the above mentioned trials were started, two randomized trials showed that a selected group of patients identified by advanced imaging who arrive more than 4.5 hours after symptom onset or last known well (LKW) time may benefit from IVT.^{3,4} WAKE-UP was a placebo-controlled, randomized trial of patients aged 18 to 80 years who were more than 4.5 hours since last known well, had an unknown time of stroke onset, and could be treated within 4.5 hours of symptom recognition (i.e. waking up or first seen with symptoms) of whom the majority (89%) woke up with stroke symptoms.³ Eligible patients had to have DWI-FLAIR mismatch on MRI, a NIHSS score ≤ 25 , and a DWI lesion smaller than one third of the territory of the middle cerebral artery. Approximately 20% of enrolled patients had an LVO. Patients were excluded if MT was planned, although MT at six or more hours from onset was not proven beneficial until after the trial was completed. Compared with placebo, IVT was associated with a higher rate of excellent outcome (mRS 0-1; 53% vs. 42%, adjusted OR: 1.61 [95% CI 1.09 - 2.36]; p=0.02). IVT was also associated with a non-significantly increased risk of sICH (2.0% vs. 0.4%, p=0.15) and a non-significantly higher mortality at 90 days (4.1% vs. 1.2%, p=0.07).

EXTEND was a randomized placebo-controlled trial involving patients with acute ischaemic stroke (NIHSS score 4 to 26), in whom the assigned intervention was initiated between 4.5 and 9.0 hours after the onset of stroke (35% of the 225 included patients) or upon awakening with stroke symptoms (if within 9 hours from the midpoint of sleep).⁴ Eligible patients had to have perfusion core/penumbra mismatch on CT or MRI.⁴ Patients were ineligible if MT was planned and again this trial commenced before MT was proven beneficial in the extended time window. 71% of enrolled patients had an LVO. Compared with placebo, IVT was associated with higher proportion of patients with excellent outcome (mRS 0-1; adjusted RR 1.44, 95% CI 1.01 to 2.06, $p=0.04$), and there was no evidence of treatment effect modification by different time intervals (4.5-6 hours or 6-9 hours), or in patients with wake-up stroke (p for interaction= 0.41). A secondary pre-specified ordinal analysis did not show a significant difference in functional outcome (common OR for better functional outcome, 1.55, 95% CI 0.96-2.49). IVT was associated with non-significantly higher rates of 90-day mortality (adjusted RR 1.17 95% CI, 0.57 to 2.40) and sICH (adjusted RR 7.22 95% CI 0.97–53.54).

In a subsequent individual patient data meta-analysis including data from the perfusion imaging-based ECASS-4 and EPITHET trials ($n=414$; wake-up strokes: 51%; LVO: 61%),^{34,35} IVT was associated with higher rates of excellent outcome (OR 1.86, 95% CI 1.15–2.99, $p=0.01$), higher rates of sICH (5% vs. <1%; OR 9.7, 95% CI 1.23-76.55, $p=0.03$) and no significant difference in mortality (OR 1.55, 95% CI 0.81-2.96, $p=0.19$).³⁶ There was no evidence of a modification of the effect of IVT across three predefined time strata (4.5-6h, 6-9h, wake-up stroke; P for interaction= 0.87) or in patients with or without LVO (P for interaction= 0.66).

Another individual patient data meta-analysis included 843 patients with unknown stroke onset (upon awakening in 89% of cases) enrolled in RCTs based on DWI-FLAIR mismatch (WAKE-UP³ and THAWS³⁷) or core/penumbra mismatch on perfusion MRI or CT (EXTEND⁴ and ECASS-4³⁴).³⁸ Compared to placebo or standard care, IVT was significantly associated with excellent outcome (adjusted OR 1.49, 95% CI 1.10-2.03, p=0.01) and reduced disability at 90 days (adjusted cOR 1.39, 95% CI 1.05-1.80, p=0.02), at the expense of a higher risk of sICH (3% vs. 0.5%, adjusted OR 5.58, 95% CI 1.22–25.50, p=0.02) and mortality within 3 months (adjusted OR 2.06, 95% CI 1.03-4.09, p=0.04). The effect of IVT was consistent across predefined subgroups, including imaging modality (CT vs. MRI, P for interaction=0.28), wake-up stroke vs. other situations (P for interaction = 0.76), and LVO status (P for interaction=0.28). Of note, MT was not performed in the 25% of included patients with LVO.

Based on the results of the WAKE-UP³, THAWS³⁷, EXTEND⁴, ECASS-4³⁴, EPITHET³⁵ trials and their meta-analyses^{36,38}, the recently published ESO guidelines on intravenous thrombolysis for acute ischaemic stroke included recommendations for IVT beyond 4.5 h after stroke onset or for patients with wake-up stroke or stroke of unknown onset time:²³ IVT is recommended for patients with known stroke duration of 4.5 to 9 hrs and for patients with stroke symptoms on awakening from sleep and their midpoint of sleep no longer than 9 hours before imaging with CT- or MRI- core/perfusion mismatch. IVT is also recommended for wake-up stroke patients who were last seen well more than 4.5 h earlier with DWI-FLAIR mismatch on MRI. These ESO recommendations are for patients for whom MT is either not indicated or not planned.

The MWG members provide below an expert consensus statement for IVT before MT in patients who wake up with stroke symptoms (see below). As the WAKE-UP and THAWS trials included patients < 4.5 hours after symptom recognition or awakening and EXTEND and ECASS 4 included patients < 9 hours after ‘midtime of sleep’ in case of ischaemic stroke at awakening (which in most cases will correspond to < 4.5 hours after awakening), the MWG members limit this expert consensus statement to patients arriving < 4.5 hours after awakening. The results of the votes for this statement are provided in Supplemental Table 2. This expert consensus statement supersedes the one provided in the 2021 ESO guideline on intravenous thrombolysis for patients with wake-up stroke who are eligible for both IVT and MT.²³

The ongoing Tenecteplase in Wake-up Ischaemic Stroke Trial (TWIST; NCT03181360) includes patients who present with a wake-up stroke within 4.5 h after awakening, without any advanced imaging selection.³⁹ The randomized Tenecteplase in Stroke Patients Between 4.5 and 24 Hours (TIMELESS; NCT03785678) will provide data on the comparison of tenecteplase and placebo in patients with LVO and penumbral tissue. Results from these two trials may shed new light on the effect of IVT with tenecteplase prior to MT.

Expert consensus statement

For patients directly admitted to a thrombectomy-capable centre within 4.5 hours of symptom recognition after wake-up ischaemic stroke caused by anterior circulation large vessel occlusion, we suggest intravenous thrombolysis plus mechanical thrombectomy over mechanical thrombectomy alone in selected patients.

The selection criteria for IVT and MT for patients with wake-up stroke are detailed in the corresponding European Guidelines.^{5,23} Notably, eligibility imaging criteria for IVT include DWI-FLAIR mismatch or perfusion core/penumbra mismatch*.

*Perfusion core/penumbra mismatch:

- Infarct core** volume < 70 ml
- and Critically hypoperfused† volume / Infarct core** volume > 1.2
- and Mismatch volume > 10 ml

** rCBF <30% (CT perfusion) or ADC < 620 $\mu\text{m}^2/\text{s}$ (Diffusion MRI)

† Tmax >6s (perfusion CT or perfusion MRI)

Table 1: Overview of the design of each included RCT

Trial	DIRECT-MT	DEVT	SKIP	MR CLEAN-NO IV	SWIFT-DIRECT	DIRECT-SAFE
Design	Non-inferiority RCT (PROBE)	Non-inferiority RCT (PROBE)	Non-inferiority RCT (PROBE)	Superiority RCT (PROBE)	Non-inferiority RCT (PROBE)	Non-inferiority RCT (PROBE)
Primary endpoint	mRS (cOR)	mRS 0-2	mRS 0-2	mRS (cOR)	mRS 0-2	mRS 0-2
Pre-specified non-inferiority margin, in relation with the primary endpoint	Relative: lower boundary of the CI of the cOR ≥ 0.80	Absolute: 10%	Relative: lower boundary of the CI of the OR ≥ 0.74	Relative: lower boundary of the CI of the cOR ≥ 0.80	Absolute: 12%	Absolute: 10%
Main inclusion criteria	<ul style="list-style-type: none"> • Age ≥ 18 y.o. • Pre-stroke mRS ≤ 2 • ICA, M1 or proximal M2 occlusion • NIHSS ≥ 2 • ASPECTS: no limit • Eligible for IVT within 4.5 hours after symptom onset 	<ul style="list-style-type: none"> • Age ≥ 18 y.o. • Pre-stroke mRS ≤ 1 • ICA or M1 occlusion • NIHSS: no lower limit • ASPECTS: no limit • Eligible for IVT within 4.5 hours after symptom onset (randomization 	<ul style="list-style-type: none"> • Age 18-85 y.o. • Pre-stroke mRS ≤ 2 • ICA or M1 occlusion • NIHSS ≥ 6 • CT-ASPECTS ≥ 6 or DWI-ASPECTS ≥ 5 • Eligible for IVT within 4.5 hours after symptom onset (randomization within 4 h from onset) 	<ul style="list-style-type: none"> • Age ≥ 18 y.o. • Pre-stroke mRS ≤ 2 • ICA-T, M1 or proximal M2 occlusion • NIHSS ≥ 2 • ASPECTS: no limit • Eligible for IVT within 4.5 hours after symptom onset 	<ul style="list-style-type: none"> • Age ≥ 18 y.o. • Pre-stroke mRS ≤ 1 • ICA or M1 occlusion • NIHSS ≥ 5 and < 30 • ASPECTS ≥ 4 (CT or MRI) • Eligible for IVT within 4.5 hours after symptom onset (randomization 	<ul style="list-style-type: none"> • Age ≥ 18 y.o. • Pre-stroke mRS ≤ 3 • ICA, M1, M2 or basilar artery occlusion • No hypodensity $> 1/3$ MCA territory on non-contrast CT • Eligible for IVT within 4.5 hours after symptom onset • Arterial puncture possible within 6hrs of symptom onset

		within 4h15min from onset)			within 4h15min from onset)	
Thrombolytic agent	Alteplase 0.9 mg/kg	Alteplase 0.9 mg/kg	Alteplase 0.6 mg/kg	Alteplase 0.9 mg/kg	Alteplase 0.9 mg/kg	Alteplase 0.9 mg/kg or Tenecteplase 0.25 mg/kg
Centres	41 academic tertiary care centres in China	33 tertiary stroke centres in China	23 MT-capable stroke centres in Japan	20 MT-capable stroke centres in the Netherlands, Belgium and France	48 centres in Switzerland, Germany, UK, France, Austria, Finland, Spain, and Canada	25 centres in China, Australia, Vietnam and New Zealand
Funding	Stroke Prevention Project of the National Health Commission of the People's Republic of China and by the Wu Jieping Medical Foundation.	National Natural Science Foundation of China, Chongqing Major Disease Prevention and Control Technology Research Project, Clinical Medical Research Talent Training Program of Army Medical University, Major Clinical Innovation Technology	Japanese Society for Neuroendovascular Therapy.	Dutch Heart Foundation; the Brain Foundation Netherlands; the Ministry of Economic Affairs; and unrestricted funding by Stryker, Medtronic, and Cerenovus.	Investigator initiated trial, supported by Medtronic, additional intramural funds Berne University Hospital	Investigator initiated trial, supported by an Australian NHMRC program grant and Stryker

		Project of the Second Affiliated Hospital of Army Medical University.				
--	--	--	--	--	--	--

Abbreviations: ASPECTS: Alberta Stroke Program Early Computed Tomography Score; CI: confidence interval; cOR: common odds ratio; CT: computed tomography; dMT: direct mechanical thrombectomy (MT alone); ICA: internal carotid artery; IVT: intravenous thrombolysis with alteplase; MCA: middle cerebral artery; MRI: magnetic resonance imaging; mRS: modified Rankin Scale; M1: first segment of the middle cerebral artery; M2: second segment of the middle cerebral artery; MT: mechanical thrombectomy; NA: not available; NIHSS: National Institutes of Health Stroke Scale; OR: odds ratio; PROBE: prospective randomized open blinded endpoint trial; RCT: randomized clinical controlled trial.

Table 2: Patient characteristics and main results of the included RCTs

	DIRECT-MT	DEVT	SKIP	MR CLEAN-NO IV	SWIFT-DIRECT	DIRECT-SAFE
Number of patients (main analysis)	654	234	204	539	408***	293
Median (IQR) age (years)	69 (61 – 76)	70 (60 – 78)	74 (67 – 80)	71 (61 – 79)	73 (64 – 81, dMT group) vs. 72 (65 – 81)	70 (61 – 78, dMT group) vs. 69 (60 – 79)
Median (IQR) NIHSS score	17 (13–22)	16 (12-20)	18 (12-23)	16 (10 – 20)	17 (13 – 20, dMT group) vs. 17 (12 – 20)	15 (11 – 20, dMT group) vs. 15 (10 – 20)
Median (IQR) ASPECTS	9 (7-10)	8 (7-9)	8 (6-9)	9 (8 – 10)	8 (7 – 9)	10 (9 – 10)
Occlusion site (%)	ICA: 35% M1: 52% M2: 12% Tandem: 10%	ICA: 15% M1: 82% M2: 2% Tandem: NA	ICA: 35% M1: 50% M2: 15% Tandem: 11%	ICA: 22% M1: 61% M2: 16% Tandem: 17%	ICA: 29% M1: 71% M2: 0.2% Tandem: 15%	ICA: 22% M1: 56% M2: 15% Basilar artery: 6% Tandem: 16%
mRS 0-2 at 90 days	36.5% vs. 36.9% Adj OR 0.97 (0.68 - 1.37)	54.3% vs. 46.6% Adj OR 1.48 (0.81 - 2.74)	59.4% vs. 57.3% Unadj OR 1.09 (0.63 - 1.90*)	49.1% vs. 51.1% Adj OR 0.95 (0.65 - 1.39)	56.7% vs. 65.2% Unadj OR 0.70 (0.47-1.04)	54.8% vs. 60.5% Adj OR 0.75 (0.45-1.24)
mRS 0-1 at 90 days	24.5% vs. 22.6% Adj OR 1.09 (0.74 - 1.59)	37.9% vs. 31.4% Adj OR 1.38 (0.75 - 2.56)	40.6% vs. 44.6% Unadj OR 0.85 (0.49 - 1.48)*	16.1% vs. 15.4% Adj OR 1.01 (0.63 - 1.63)	40% vs. 43%	42.5% vs. 48.3% Adj OR 0.76 (0.64-1.24)
Whole range of the mRS	Adj cOR 1.07 (0.81 - 1.40)	Adj cOR 1.13 (0.71 - 1.79)	Unadj cOR 0.97 (0.60-1.57*)	Adj cOR 0.84 (0.62-1.15)	Adj cOR 0.75 (0.53-1.06)	Adj cOR 0.85 (0.56-1.28)
Death at 90 days	17.8% vs. 18.9% Unadj OR 0.93 (0.62-1.38)*	17.2% vs. 17.8% Unadj OR 0.96 (0.49-1.89)*	7.9% vs. 8.7% Unadj OR 0.90 (0.33-2.43)	20.5% vs. 15.8% Adj OR 1.39 (0.84-2.30)	10.9% vs. 8.2% Unadj OR 1.37 (0.71-2.67)	15.1% vs. 16.3% Adj OR 0.92 (0.46-1.84)

sICH (definition)	4.3% vs. 6.1% (Heidelberg) Unadj OR 0.69 (0.34 - 1.39)*	6.1% vs. 6.8% (Heidelberg) Unadj OR 0.88 (0.31 - 2.52)*	5.9% vs. 7.8% (SITS-MOST) Unadj OR 0.75 (0.25 - 2.24)	5.9% vs. 5.3% (Heidelberg) Adj OR 1.30 (0.60 - 2.81)	1.5% vs. 4.9% (Modified SITS-MOST definition**) Unadj OR 0.30 (0.08-1.10)	2.7% vs. 4.8% (Definition not provided) Adj OR 0.57 (0.16-1.99)
Any ICH	37.6% vs. 42.3%	21.7% vs. 32.5%	33.7% vs. 50.5% Unadj OR 0.50 (0.28 - 0.88)	35.9% vs. 35.6% Adj OR 0.97 (0.68 – 1.38)	29.3% vs. 33.7%	NA
mTICI \geq2b at the end of the procedure	79.4% vs. 84.5% OR 0.70 (0.47 - 1.06)	88.5% vs. 87.2% OR 1.14 (0.50 - 2.61)	90.1% vs. 93.2% Unadj OR 0.66 (0.24 - 1.82)	78.7% vs. 83.1% Adj OR 0.73 (0.47 - 1.13)	90.5% vs. 96.6%	88.8% vs. 89.0% Adj OR 0.84 (0.39-1.82)
First-pass complete reperfusion	NA	44.0% vs. 43.2%	NA	NA	NA	NA
Number of passes (median)	NA	Stent retriever passes: 1 (1-2) vs. 1 (0-2) Aspiration device passes: 0 (0-1) vs. 0 (0-1)	NA	NA	NA	NA
Distal embolisation / Embolisation in new territory	10.7% vs. 9.4%	Clot migration: 17.7% vs 23.9%	NA	5.2% vs. 3.3% Adj OR 1.31 (0.68–2.53)	NA	NA
Infarct volume at 24-36hrs	At a median follow-up time of 6 days: 36.3 vs. 36.7 ml (NCCT)	NA	NA	24 vs. 17 ml	NA	NA
Onset-to-IVT time (median)	177 (randomisation) + 7	176	100 (door)+ 36 (randomisation) +14 (IVT)	98	144	NA
Onset-to-arterial puncture time (median)	167 (randomisation) + 31 vs. 177 (randomisation) + 36	200 vs. 210	92 (door) +37 (randomisation) +20 (puncture) vs.	130 vs. 135	NA	NA

			100 (door) + 36 (randomisation) + 22 (puncture)			
Onset-to-reperfusion time (median)	167 (randomisation) + 102 vs. 177 (randomisation) + 96	289 vs. 285	NA	188 vs. 178	NA	231 vs. 248
Door-to-IVT time (median)	59	61	36 (door to randomization) + 14 (randomization-to-IVT time)	31	NA	NA
Door-to-arterial puncture time (median)	84 vs. 85.5	101 vs. 105	NA	63 vs. 64	75 vs. 80	NA
Door-to-reperfusion time (median)	NA	NA	NA	NA	111 vs. 117	NA

*Post-hoc calculation based on published data

**Symptomatic intracranial hemorrhage at 24±6 h post-randomization was defined as any parenchymal hematoma type 1 or 2, remote intracranial hemorrhage, subarachnoid hemorrhage, or intraventricular hemorrhage (IVH) associated with a ≥4-point worsening on the NIHSS within 24 h.

***30-day mRS was available for 407 patients

Abbreviations: ASPECTS: Alberta Stroke Program Early Computed Tomography Score; CI: confidence interval; cOR: common odds ratio; CT: computed tomography; dMT: direct mechanical thrombectomy (MT alone); ICA: internal carotid artery; ICH: intracranial haemorrhage; IQR: interquartile range; IVT: intravenous thrombolysis with alteplase; MCA: middle cerebral artery; MRI: magnetic resonance imaging; mRS: modified Rankin Scale; M1: first segment of the middle cerebral artery; M2: second segment of the middle cerebral artery; MT: mechanical thrombectomy; mTICI: modified Treatment In Cerebral Ischaemia scale; NA: not available; NCCT: Non-contrast computed tomography; NIHSS: National Institutes of Health Stroke Scale; OR: odds ratio; PROBE: prospective randomized open blinded endpoint trial; RCT: randomized controlled clinical trial; sICH: symptomatic intracranial haemorrhage.

Figure 1: Risk of bias in each randomized controlled trial of MT alone vs. IVT plus MT for anterior circulation large vessel occlusion ischaemic stroke within 4.5 hrs of symptom onset, with regards to mRS score at 90 days

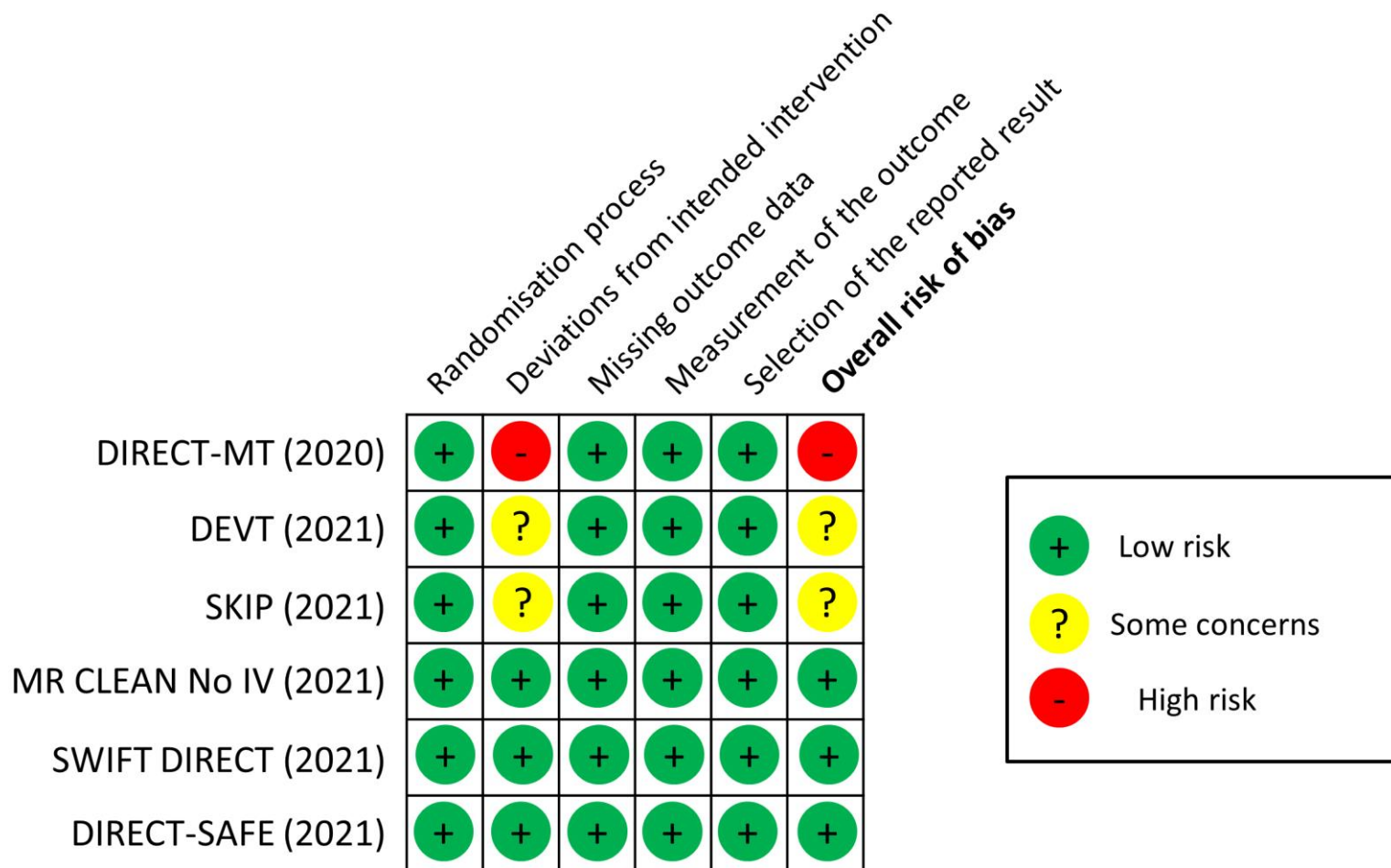
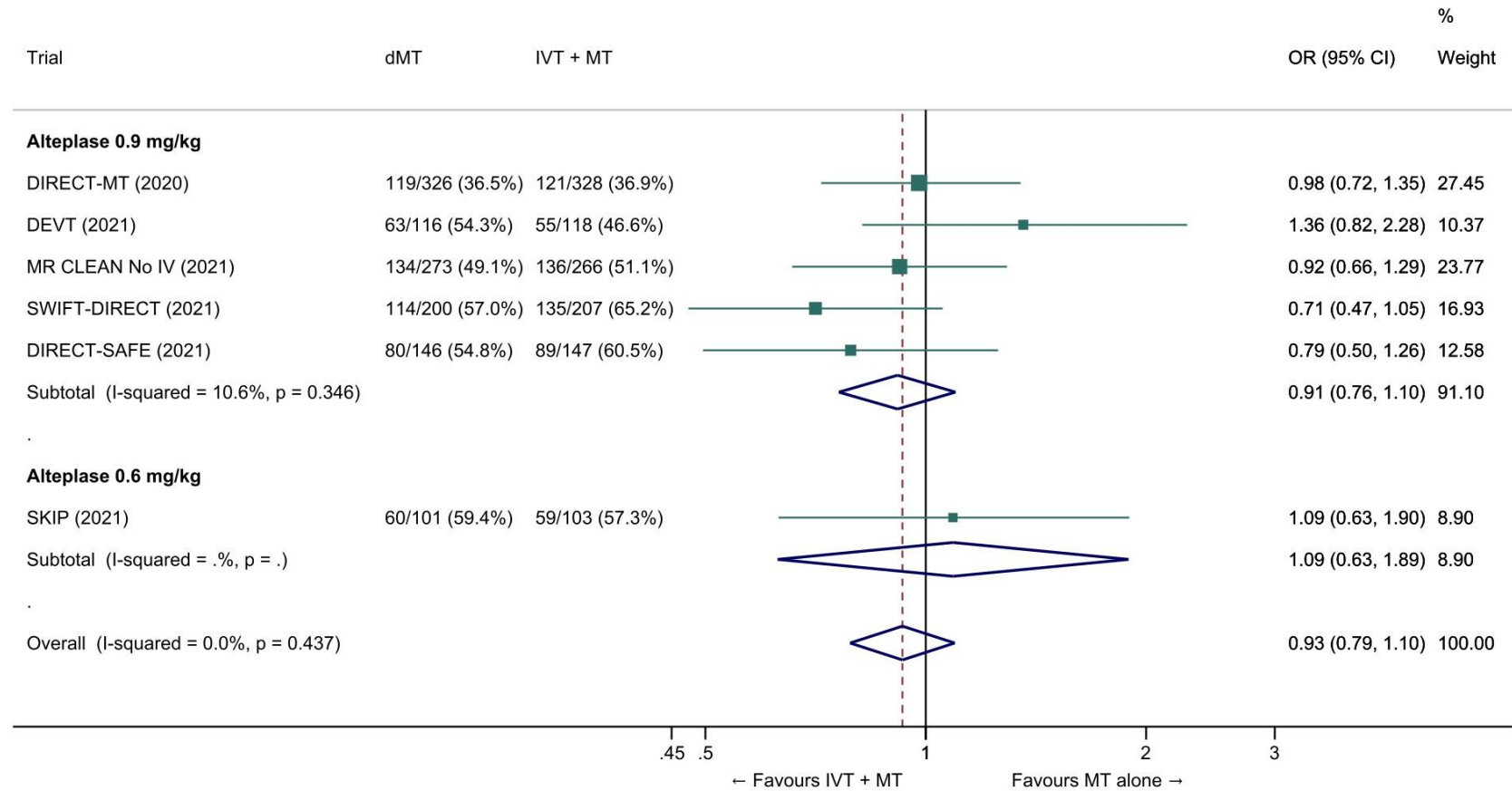
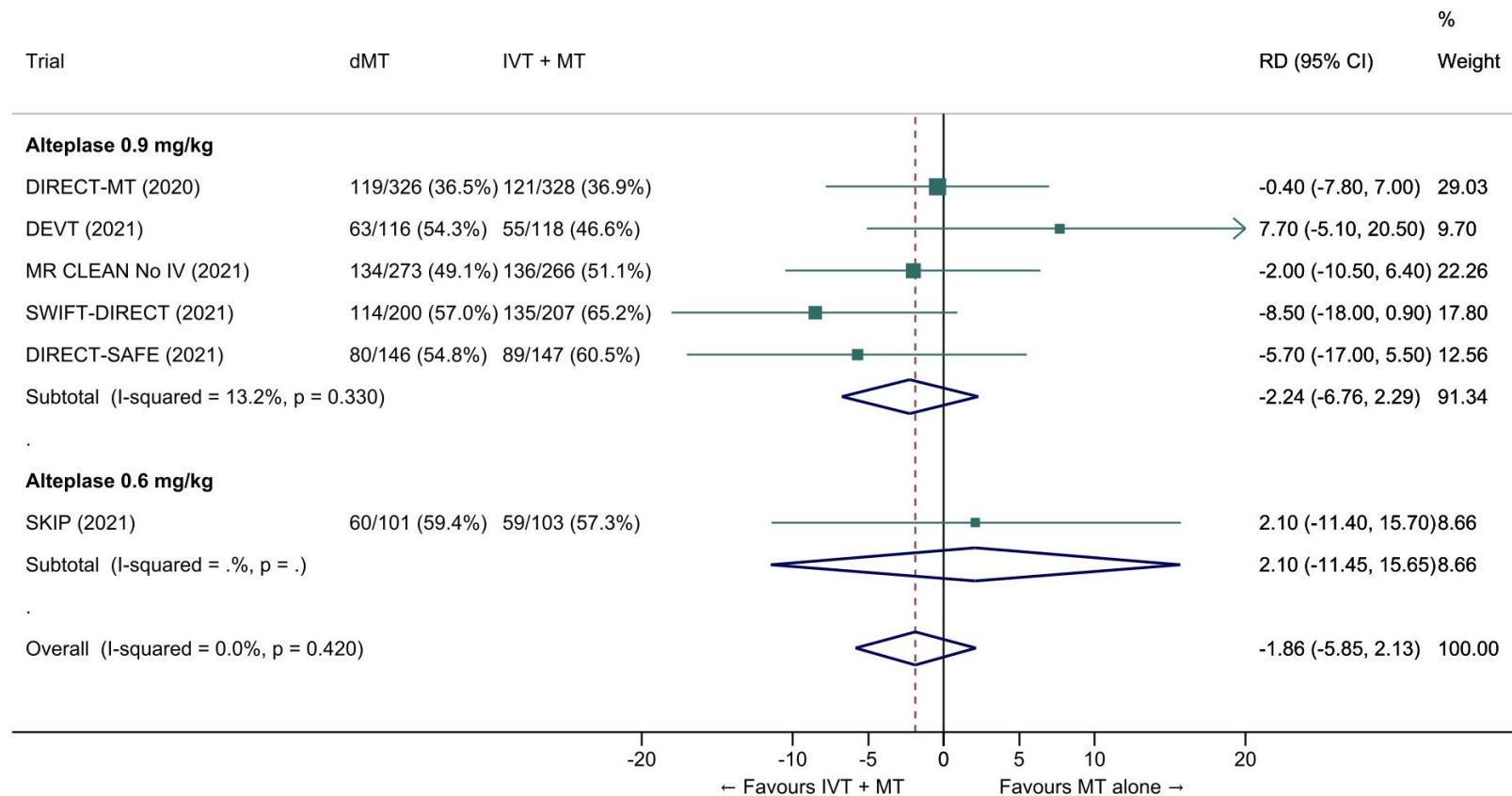


Figure 2: Good outcome (mRS 0-2 at 90 days) in ‘mothership’ anterior circulation large vessel occlusion stroke patients treated with MT alone vs. IVT plus MT within 4.5 hrs of symptom onset (unadjusted pooled OR, random-effects meta-analysis).



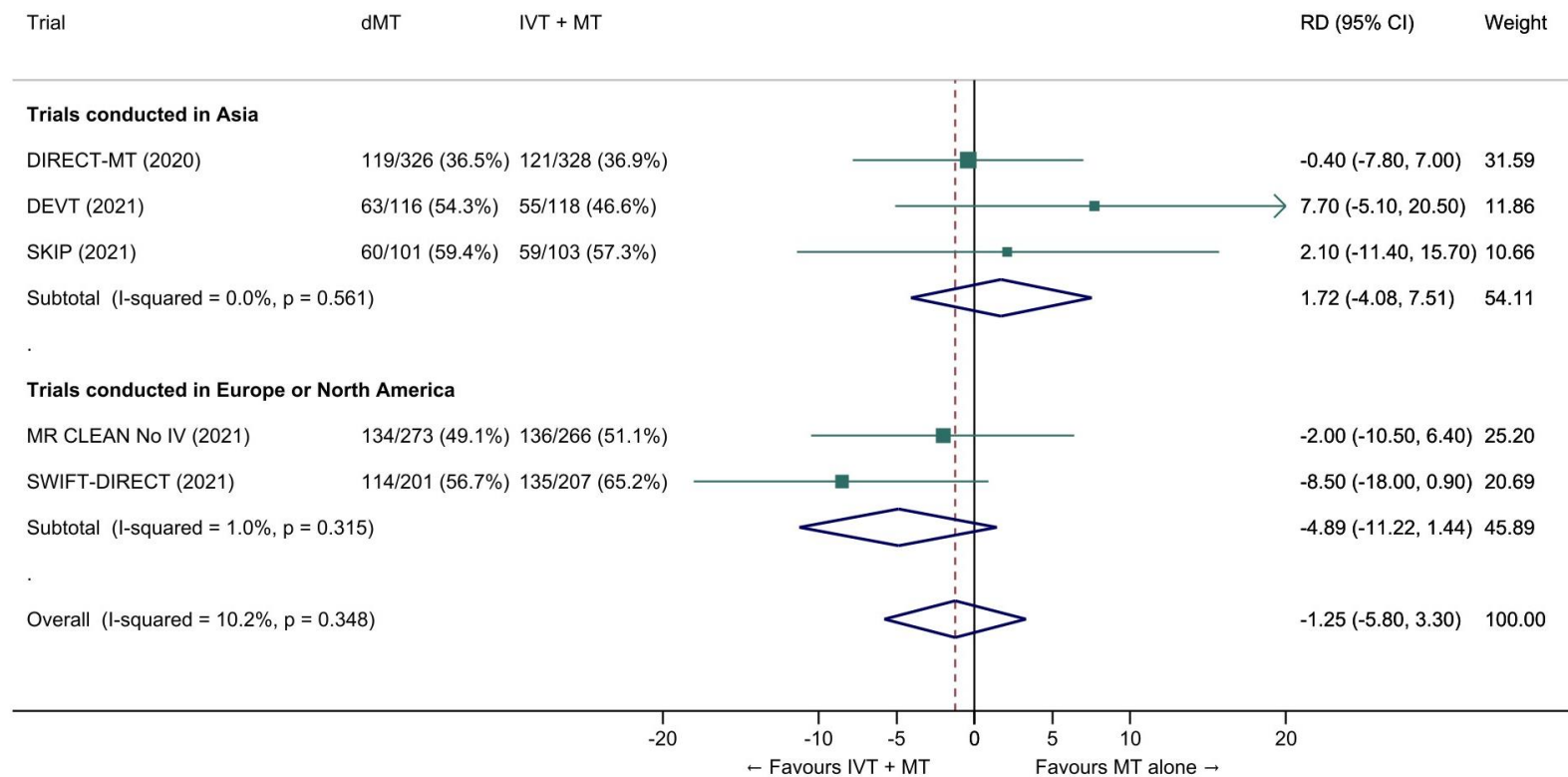
Abbreviations: dMT: direct mechanical thrombectomy (MT alone); IVT: intravenous thrombolysis with alteplase; MT: mechanical thrombectomy; OR: odds ratio.

Figure 3: Pooled risk difference (in percent) for good outcome (mRS 0-2 at 90 days) in ‘mothership’ anterior circulation large vessel occlusion stroke patients treated with MT alone vs. IVT plus MT within 4.5 hrs of symptom onset (unadjusted pooled RD, random-effects meta-analysis).



Abbreviations: dMT: direct mechanical thrombectomy (MT alone); IVT: intravenous thrombolysis with alteplase; MT: mechanical thrombectomy; RD: risk difference.

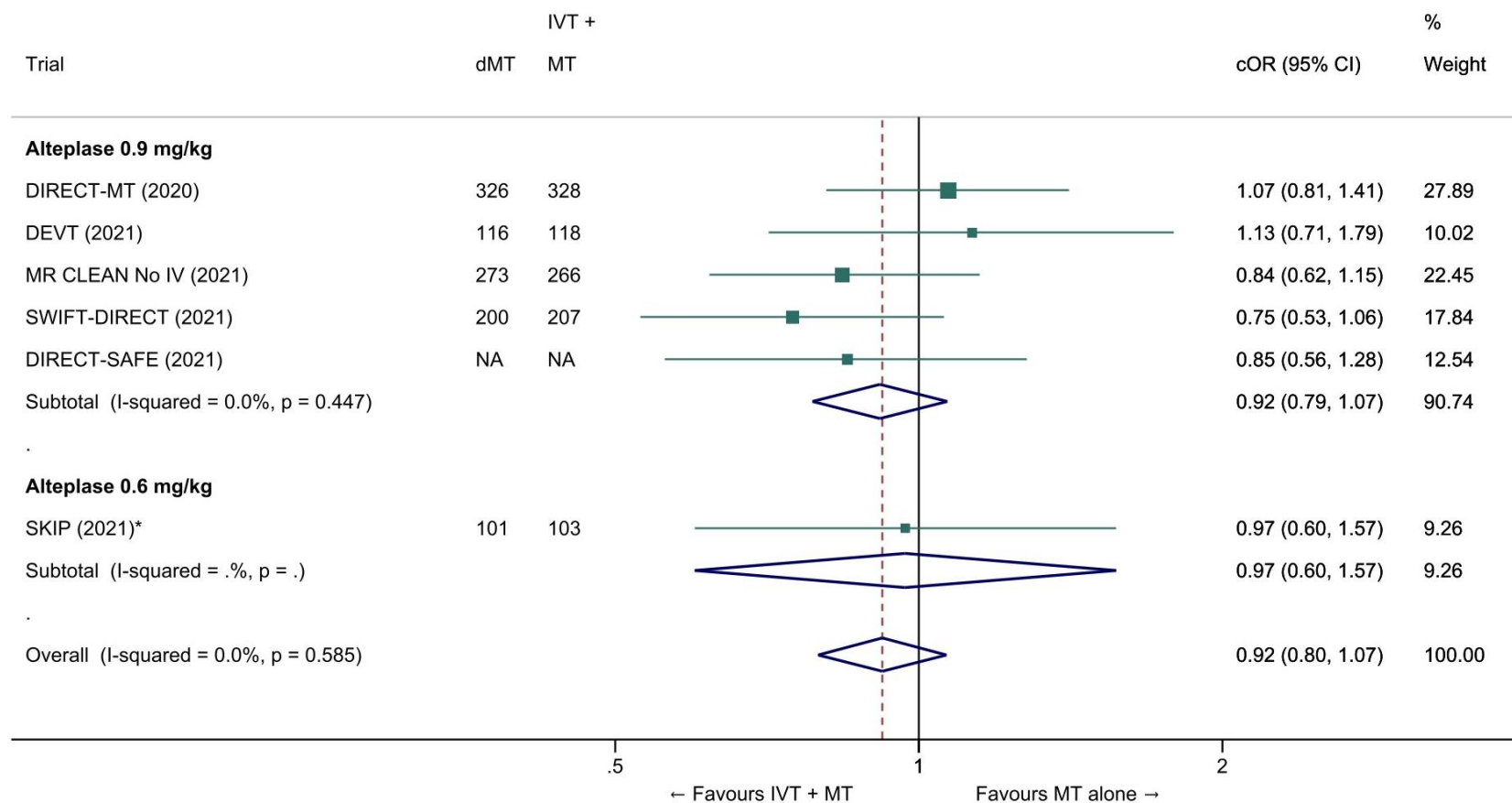
Figure 4: Pooled risk difference (in percent) for good outcome (mRS 0-2 at 90 days) in ‘mothership’ anterior circulation large vessel occlusion stroke patients treated with MT alone vs. IVT plus MT within 4.5 hrs of symptom onset, stratified by geographic region (P for heterogeneity between subgroups=0.13; unadjusted pooled RD, random-effects meta-analysis).



DIRECT-SAFE¹² was not included because it was conducted in Oceania (157 patients) and Asia (136 patients) and data allowing estimation of risk difference on functional outcome across geographical subgroups was not available at the time of the preparation of this guideline.

Abbreviations: dMT: direct mechanical thrombectomy (MT alone); IVT: intravenous thrombolysis with alteplase; MT: mechanical thrombectomy; RD: risk difference.

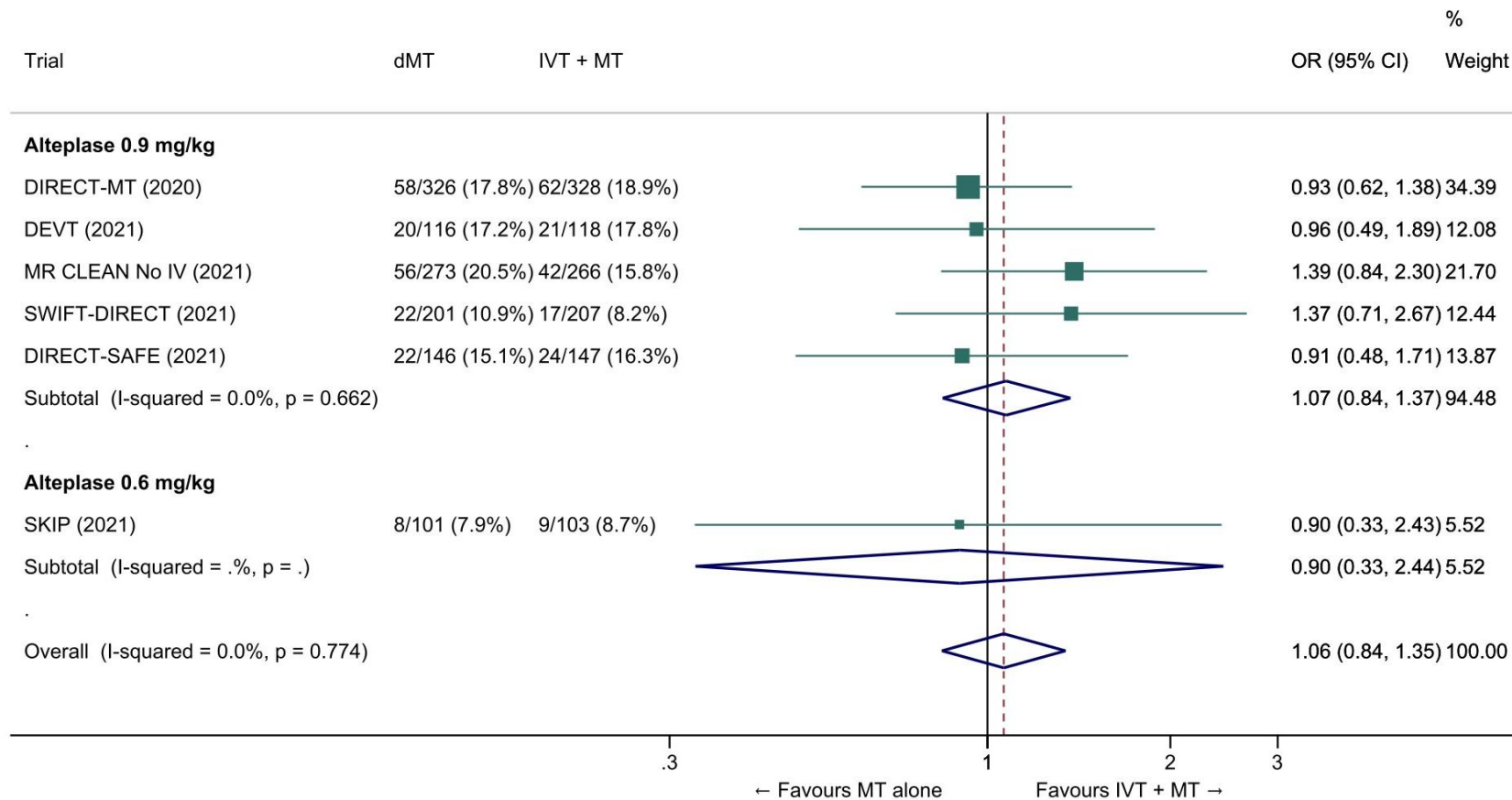
Figure 5: Pooled common odds ratio for reduced disability (improvement of a least 1 point on the mRS at 90 days) in ‘mothership’ anterior circulation large vessel occlusion stroke patients treated with MT alone vs. IVT plus MT within 4.5 hrs of symptom onset (adjusted pooled cOR, random-effects meta-analysis).



*All cORs are adjusted except in the SKIP trial. Adjustment variables varied across studies.

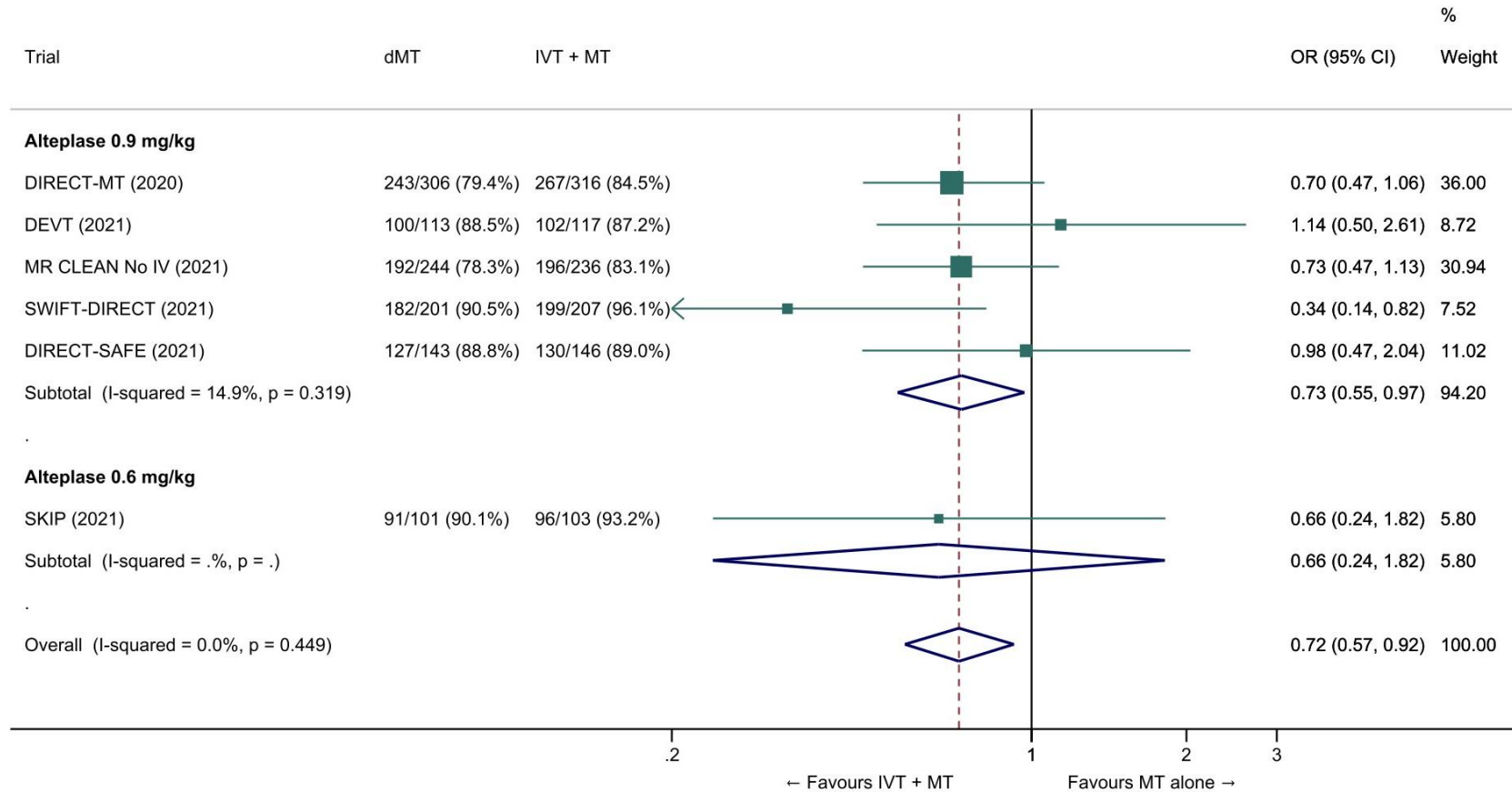
Abbreviations: cOR: common odds ratio.

Figure 6: All-cause mortality at 90 days in ‘mothership’ anterior circulation large vessel occlusion stroke patients treated with MT alone vs. IVT plus MT within 4.5 hrs of symptom onset (unadjusted pooled OR, random-effects meta-analysis).



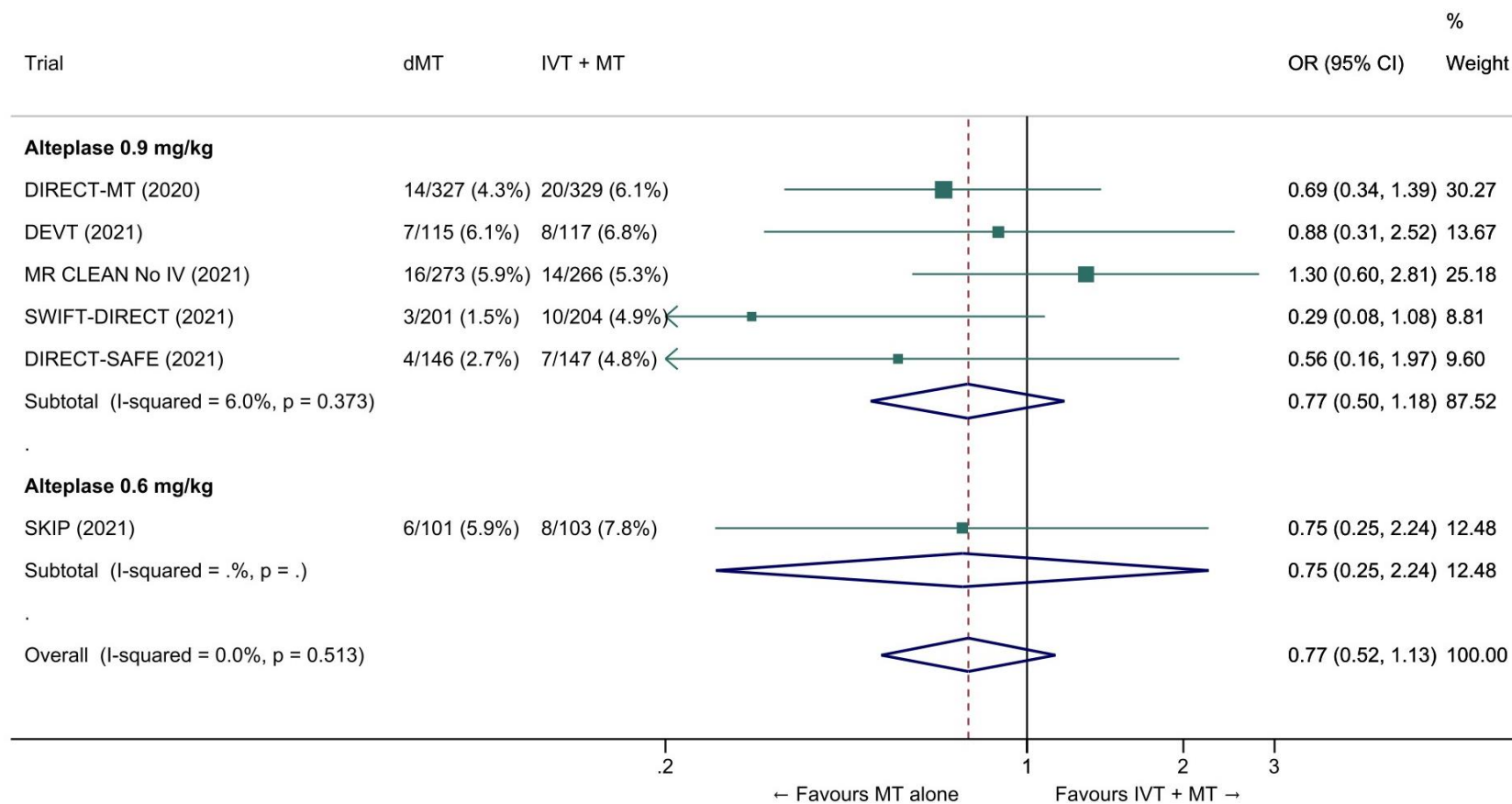
Abbreviations: dMT: direct mechanical thrombectomy (MT alone); IVT: intravenous thrombolysis with alteplase; MT: mechanical thrombectomy.

Figure 7: Pooled odds ratio for successful reperfusion (mTICI $\geq 2b$) at the end the endovascular procedure in ‘mothership’ anterior circulation large vessel occlusion stroke patients treated with MT alone vs. IVT plus MT within 4.5 hrs of symptom onset (unadjusted pooled OR, random-effects meta-analysis).



Abbreviations: dMT: direct mechanical thrombectomy (MT alone); IVT: intravenous thrombolysis with alteplase; MT: mechanical thrombectomy.

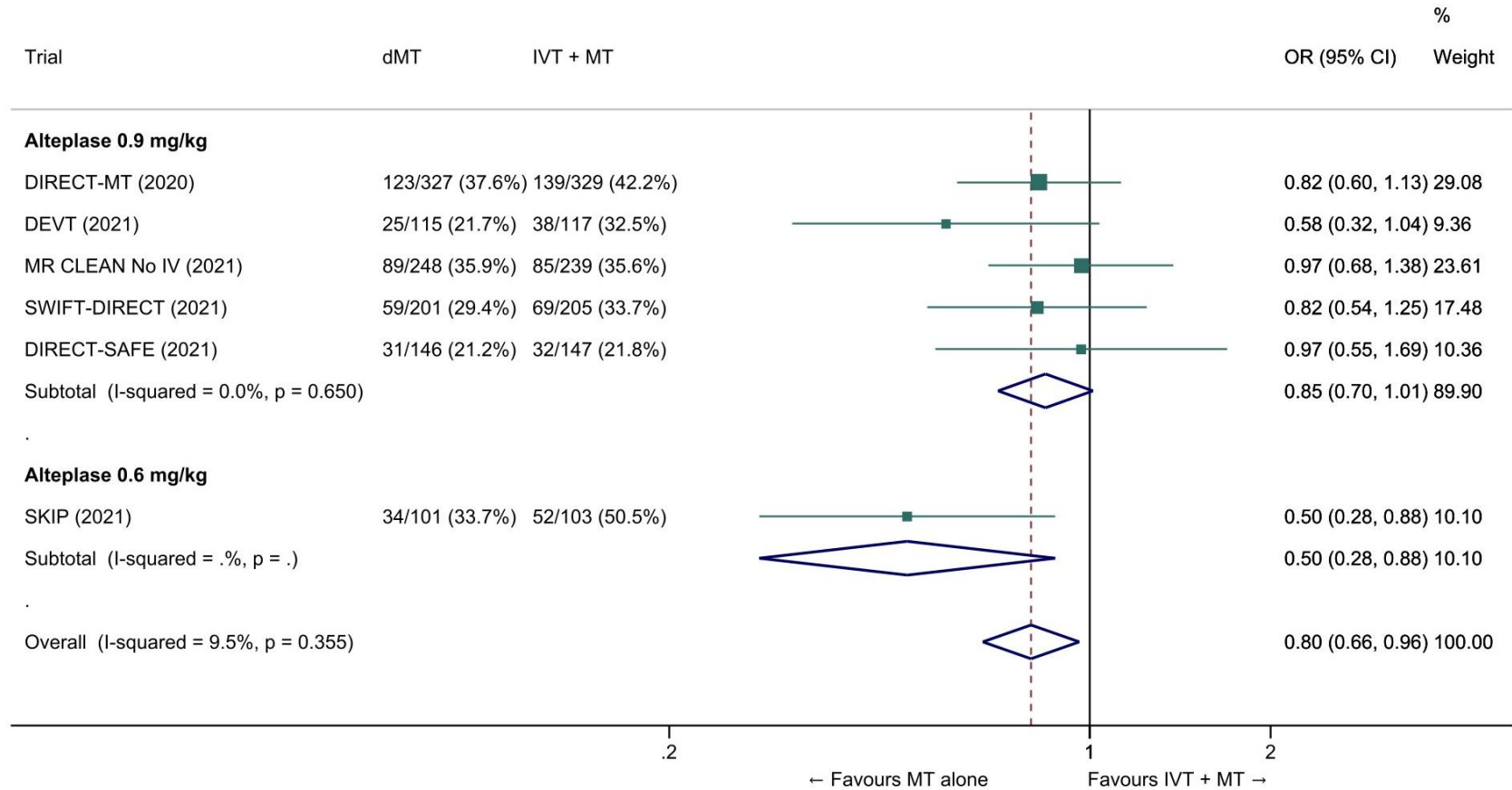
Figure 8: Pooled odds ratio for symptomatic intracerebral hemorrhage (sICH) in ‘mothership’ anterior circulation large vessel occlusion stroke patients treated with MT alone vs. IVT plus MT within 4.5 hrs of symptom onset (unadjusted pooled OR, random-effects meta-analysis).



The definition of sICH varied across studies (see Table 2 for details).

Abbreviations: dMT: direct mechanical thrombectomy (MT alone); IVT: intravenous thrombolysis with alteplase; MT: mechanical thrombectomy.

Figure 9: Pooled odds ratio for any intracranial hemorrhage in ‘mothership’ anterior circulation large vessel occlusion stroke patients treated with MT alone vs. IVT plus MT within 4.5 hrs of symptom onset (unadjusted pooled OR, random-effects meta-analysis).





Abbreviations: dMT: direct mechanical thrombectomy (MT alone); IVT: intravenous thrombolysis with alteplase; MT: mechanical thrombectomy.

Table 3: GRADE evidence profile for PICO 1

Certainty assessment							№ of patients		Effect		Certainty	Importance
№ of studies	Study design	Risk of bias	Inconsistency	Indirectness	Imprecision	Other considerations	MT alone	IVT + MT	Relative (95% CI)	Absolute (95% CI)		
Good outcome (mRS 0-2 at 90 days) - OR, unadjusted analysis												
6	randomised trials ^{6,9,11,12}	not serious	serious ^a	not serious	not serious	none	570/1162 (49.1%)	595/1169 (50.9%)	OR 0.93 (0.79 to 1.10)	18 fewer per 1 000 (from 59 fewer to 24 more)	⊕⊕⊕○ Moderate	CRITICAL
Good outcome (mRS 0-2 at 90 days) - RR, unadjusted analysis												
6	randomised trials	not serious	serious ^a	not serious	not serious	none	570/1162 (49.1%)	595/1169 (50.9%)	RR 0.96 (0.89 to 1.04)	20 fewer per 1 000 (from 56 fewer to 20 more)	⊕⊕⊕○ Moderate	CRITICAL
Reduced disability (≥1-point reduction across all mRS-scores at 90 days) - common OR, adjusted analysis												
6	randomised trials	not serious	serious ^a	not serious	not serious	none			cOR 0.92 (0.80 to 1.07)	1 fewer per 1 000 (from 1 fewer to 1 fewer)	⊕⊕⊕○ Moderate	CRITICAL
Excellent outcome (mRS 0-1 at 90 days) - OR, unadjusted analysis												
6	randomised trials	not serious	serious ^a	not serious	not serious	none		358/1169 (30.6%)	OR 0.99 (0.82 to 1.18)	2 fewer per 1 000 (from 40 fewer to 36 more)	⊕⊕⊕○ Moderate	CRITICAL
All-cause mortality at 90 days - OR, unadjusted analysis												
6	randomised trials	not serious	not serious	not serious	not serious	none	186/1163 (16.0%)	175/1169 (15.0%)	OR 1.06 (0.84 to 1.35)	8 more per 1 000 (from 21 fewer to 42 more)	⊕⊕⊕⊕ High	CRITICAL
Successful reperfusion (mTICI ≥2b) at the end of the endovascular procedure												
6	randomised trials	not serious	not serious	not serious	not serious	none	935/1108 (84.4%)	990/1125 (88.0%)	OR 0.72 (0.57 to 0.92)	39 fewer per 1 000 (from 73 fewer to 9 fewer)	⊕⊕⊕⊕ High	IMPORTANT

Symptomatic intracranial haemorrhage

Certainty assessment							№ of patients		Effect		Certainty	Importance
№ of studies	Study design	Risk of bias	Inconsistency	Indirectness	Imprecision	Other considerations	MT alone	IVT + MT	Relative (95% CI)	Absolute (95% CI)		
6	randomised trials	not serious	serious ^b	not serious	not serious	none	50/1163 (4.3%)	67/1166 (5.7%)	OR 0.77 (0.52 to 1.13)	13 fewer per 1 000 (from 27 fewer to 7 more)	 Moderate	CRITICAL
Any intracranial haemorrhage												
6	randomised trials	not serious	not serious	not serious	not serious	none	361/1138 (31.7%)	415/1140 (36.4%)	OR 0.80 (0.66 to 0.96)	50 fewer per 1 000 (from 90 fewer to 9 fewer)	 High	IMPORTANT

CI: confidence interval; OR: odds ratio; RR: risk ratio

Explanations

- a. According to each trial's criteria, non-inferiority was met in DIRECT-MT and DEVT, whereas this was not the case for all other trials.
b. Definitions of symptomatic intracranial haemorrhage varied across studies.

Patients admitted to a centre without thrombectomy facilities

(“Drip and ship” paradigm)

PICO 2: For large vessel occlusion acute ischaemic stroke (≤ 4.5 hrs of symptom onset) patients admitted to a non-thrombectomy capable centre and eligible for both treatments, does mechanical thrombectomy alone compared with intravenous thrombolysis plus mechanical thrombectomy lead to:

- a) a non-inferior proportion of patients with good outcome (mRS 0-2) at 90 days?**
- b) non-inferior or better results on other efficacy outcomes (whole range of the mRS; mRS 0-1; successful reperfusion)?**
- c) a reduction in the risk of adverse events (mortality at 90 days, sICH, any ICH)?**
- d) a reduction in key time metrics?**

Analysis of current evidence

The literature search did not identify any RCT comparing the efficacy and safety of MT alone and bridging therapy in patients admitted to stroke centres with the capability to administer IVT but not MT. There are important theoretical arguments in favour of IVT pre-treatment in the “drip and ship” model. Swift IVT delivery is associated with faster and more frequent IVT-induced recanalization and consequently better functional outcomes in acute ischaemic stroke patients with LVO, as shown in the prospective CLOTBUST-PRO study.⁴⁰ Moreover, a meta-regression analysis in a meta-analysis comparing the efficacy of “drip and ship” vs. “mothership” models revealed a significant inverse association between onset-to-needle and 90-day good outcome, with longer onset-to-needle time being detrimental for functional recovery.⁴¹ In addition, direct access to MT is limited to a minority of LVO patients^{42,43} and

withholding IVT in patients presenting to the primary stroke centres may result in “denial” of any reperfusion therapy in some patients who will reach the comprehensive stroke centres outside the time window for endovascular therapies and in those with unsuccessful MT.^{44,45} Finally, the proportion of LVO “drip and ship” patients who may successfully recanalize during transfer to comprehensive centres without receiving MT is approximately nine-fold higher in bridging therapy compared to direct MT (11.7% vs. 1.3%) according to the findings of a single-centre German study.⁴⁶ In the French multicentre PREDICT-RECANAL study of 686 IVT-treated patients referred for MT, early recanalization (mTICI $\geq 2b$) after IVT was independently associated with the drip-and-ship paradigm (adjusted OR 3.3, 95% CI: 1.8–6.0), with respective recanalization rates of 24.2% and 11.1% in drip-and-ship and mothership patients after centralized reading of arterial images.⁴⁷ Similarly, a Swiss study reported higher complete recanalization rates before MT in IVT-treated patients according to the drip-and-ship model compared to the mothership model (13.6% vs. 6.2%).⁴⁸

According to a recent systematic review, few observational studies provide a comparison of direct MT and bridging therapy in ‘drip-and-ship’ patients.¹⁷ A subgroup analysis of the SELECT (Optimizing Patient Selection for Endovascular Treatment in Acute Ischemic Stroke) study evaluated LVO patients who were “dripped” in primary stroke centres and “shipped” to MT-capable centres. This analysis found that the rates of excellent functional outcome (mRS-scores of 0-1) were significantly higher in patients receiving bridging therapy (36%) compared to direct MT (10%).⁴⁹ The investigators documented an overall shift toward better functional outcomes with bridging therapy compared to direct MT (adjusted common OR 4.51; 95% CI: 1.44-14.15). The rates of 90-day good functional outcome were numerically but non-significantly higher in the bridging therapy group (47% vs. 29%, $p=0.14$); similarly, the rates

of 90-day mortality were numerically but non-significantly lower in the bridging therapy group (13% vs 29%, $p=0.10$), while the two groups had similar sICH rates.⁴⁹ These findings were reproduced by a single-centre German study that reported higher rates of excellent functional outcome (mRS scores 0-1 or return to prestroke mRS-score) in “drip and ship” patients receiving bridging therapy (23% vs. 14% for direct MT).⁴⁶ There were no differences in the two groups with regard to safety outcomes including mortality and sICH. Finally, an analysis of the French Endovascular Treatment in Ischemic Stroke (ETIS) registry⁵⁰ reported that among 1,507 patients with anterior circulation LVO stroke treated with MT at three comprehensive stroke centres, 975 (64.7%) received prior IVT. In the ‘drip-and-ship’ subgroup (70% of the whole cohort), good outcome was observed in 50.3% and 39.7% of patients treated with bridging therapy and direct MT respectively (unadjusted OR 1.54, 95% CI: 1.14-2.07, $p=0.005$). However, this association was no longer significant after propensity score matching (OR 1.25, 95% CI: 0.86-1.82, $p=0.25$).

We conducted a meta-analysis of observational studies comparing direct MT with bridging therapy in drip-and-ship patients (Table 4).^{46,49,50} The pooled ORs for the association between direct MT and good and excellent functional outcomes were 0.63 (95% CI: 0.48-0.83, $p=0.001$, Figure 10) and 0.42 (95% CI: 0.16-1.09, $p=0.07$, $I^2=45\%$, $p=0.07$, Figure 11), respectively. The probability of reduced disability was lower in the direct MT group compared with the bridging therapy group (adjusted cOR 0.22 [95% CI 0.07-0.69], $p=0.01$), but this result was based on a single study.⁴⁹ Direct MT was not significantly associated with all-cause mortality at 90 days (OR 1.42, 95% CI: 0.59-3.44, $p=0.43$, $I^2=56\%$). In a sensitivity analysis in which propensity score matching results from the study by Di Maria et al were used instead of unadjusted results,⁵⁰ the pooled OR for mRS 0-2 was 0.75 (95% CI: 0.53-1.07,

p=0.11, I²=0%). Table 4 provides details regarding the assessment of the quality of evidence, which was judged to be low. Insufficient data were available to conduct analyses for most of our predefined outcomes.

In view of the above literature considerations and in light of the neutral results of a first RCT investigating prehospital triage for patients with suspected LVO - reporting similar outcomes in “drip and ship” and “mothership” models,⁵¹ we recommend that all IVT-eligible anterior circulation LVO patients presenting to stroke centres without endovascular facilities should receive IVT prior to their transfer to MT-capable centres according to current international recommendations.^{23,24} Shorter door-in to door-out times in the primary stroke centres are also recommended to shorten onset-to-groin-puncture time, another important determinant of functional outcome.⁵²

Evidence-based recommendation

For patients admitted to a non-thrombectomy-capable centre for an acute ischaemic stroke (≤ 4.5 hrs of symptom onset) with anterior circulation large vessel occlusion and who are eligible for both treatments, we recommend intravenous thrombolysis followed by rapid transfer to a centre with thrombectomy facilities over omitting intravenous thrombolysis and transfer to a centre with thrombectomy facilities.

Intravenous thrombolysis should not delay the transfer to a centre with thrombectomy facilities.

Quality of evidence: Low $\oplus\oplus$

Strength of recommendation: Strong $\uparrow\uparrow$

Additional information

Prior IVT guidelines have deemed the quality of evidence to be high for alteplase compared to placebo within 4.5 hours of acute ischaemic stroke, and with no evidence of effect modification by stroke aetiology.²³ Furthermore, the quality of evidence is also high for the time dependence of benefit of IVT with alteplase in acute ischaemic stroke patients with and without the presence of LVO, supporting initiation as quickly as possible.^{24,32} The quality of evidence is reported as low in this recommendation specifically for the distinct question as to whether IVT should be withheld in MT-eligible patients arriving to a centre without thrombectomy facilities. There are no RCTs to address this specific question and furthermore, they are unlikely to be performed at this time given the absence of support for this concept from the trials of patients directly admitted to thrombectomy-capable centres.

Expert consensus statement

For patients with unknown stroke onset, the administration of IVT in a non-thrombectomy capable centre also guarantees faster initiation of reperfusion therapy, but the risk of delayed MT after IVT in the drip-and-ship setting is more uncertain given an absence of data.

However, following the same rationale as for the “mothership” patients, the MWG members provide the following expert consensus statement for patients with wake-up stroke admitted to a centre without MT facilities. The results of the votes for this statement are provided in Supplemental Table 2. This expert consensus statement supersedes the one provided in the

2021 ESO guideline on intravenous thrombolysis for patients with wake-up stroke who are eligible for both IVT and MT.²³

Expert consensus statement

For patients admitted to a non-thrombectomy capable centre within 4.5 hours of symptom recognition after wake-up ischaemic stroke caused by anterior circulation large vessel occlusion, we suggest intravenous thrombolysis plus mechanical thrombectomy over mechanical thrombectomy alone in selected patients.

The selection criteria for IVT and MT for patients with wake-up stroke are detailed in the corresponding European guidelines.^{5,23} Notably, eligibility imaging criteria for IVT include DWI-FLAIR mismatch or perfusion core/penumbra mismatch*.

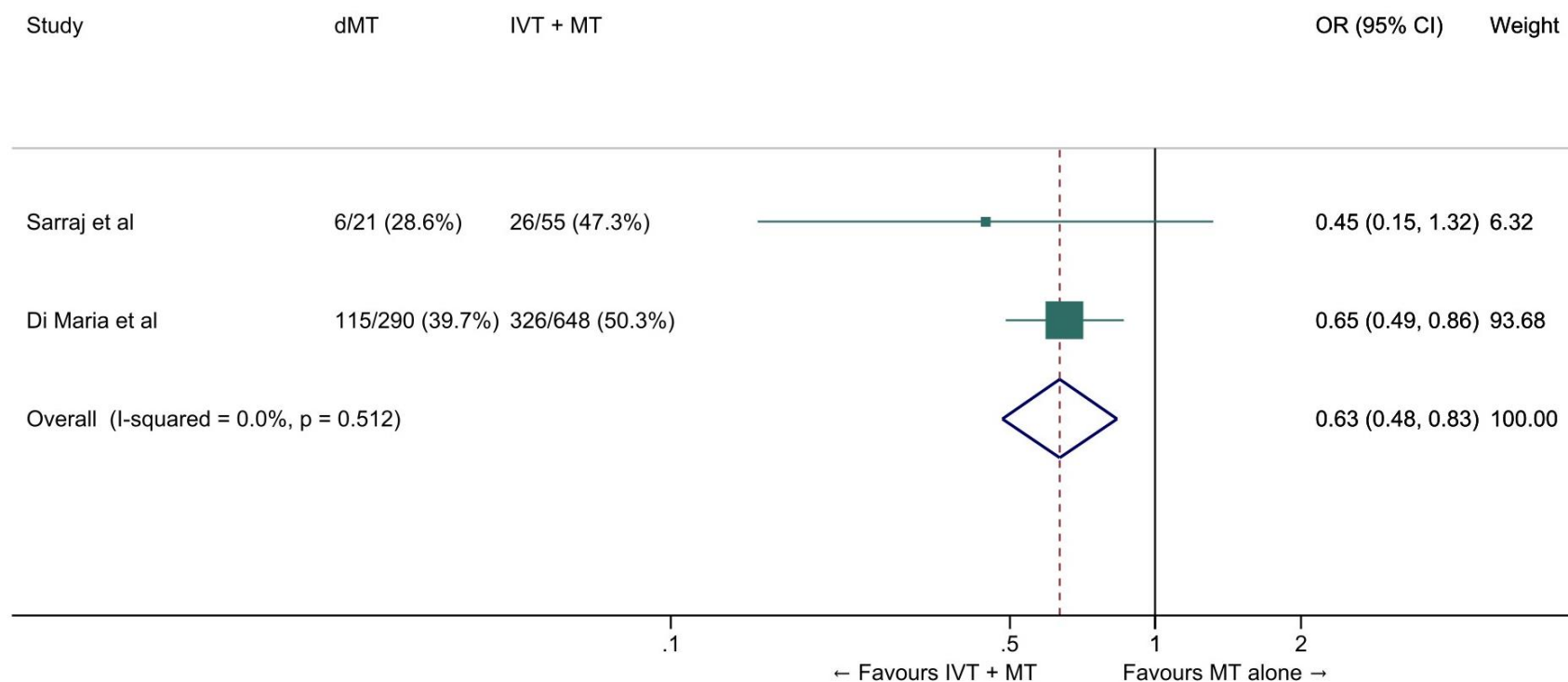
*Perfusion core/penumbra mismatch:

- Infarct core** volume < 70 ml
- and Critically hypoperfused† volume / Infarct core** volume > 1.2
- and Mismatch volume > 10 ml

** rCBF <30% (CT perfusion) or ADC < 620 $\mu\text{m}^2/\text{s}$ (Diffusion MRI)

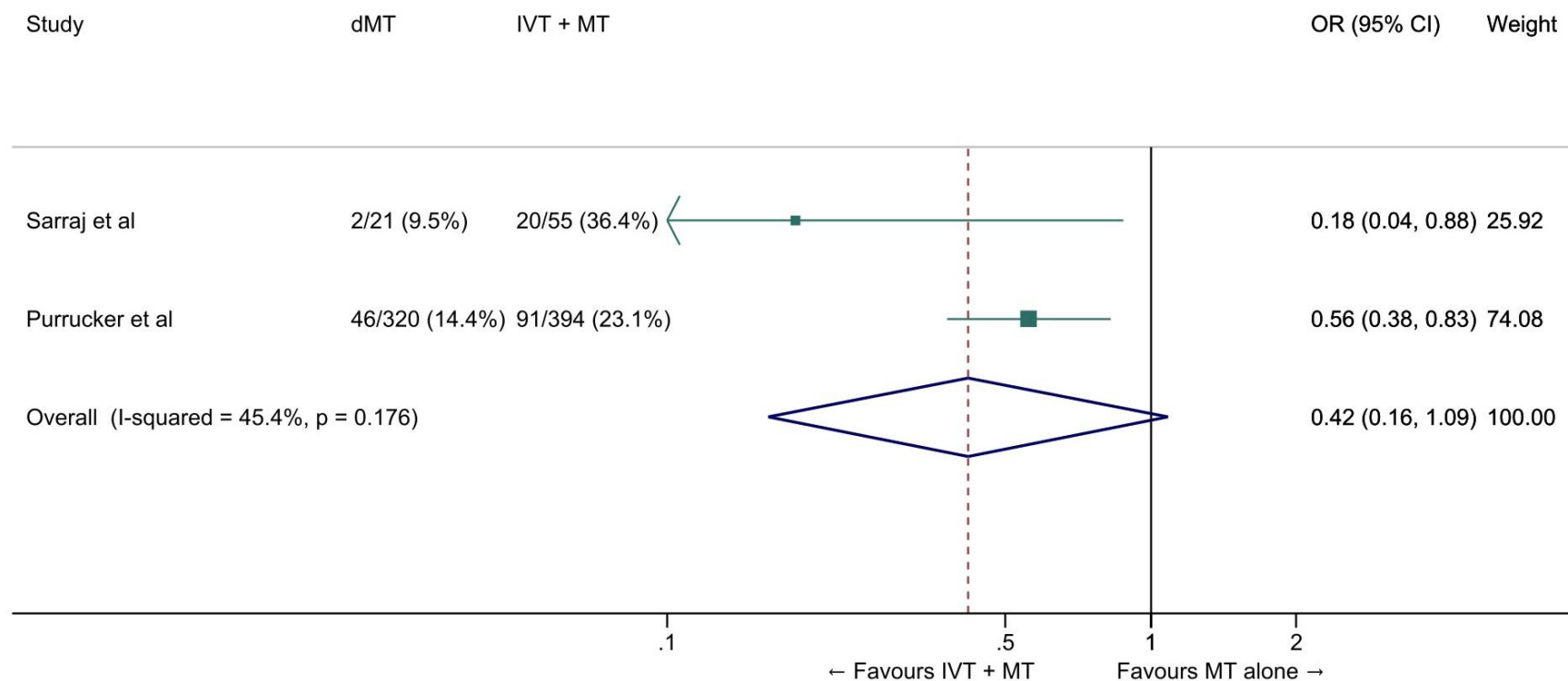
† Tmax >6s (perfusion CT or perfusion MRI)

Figure 10: Good outcome (mRS 0-2 at 90 days) in ‘drip-and-ship’ large vessel occlusion stroke patients treated with MT alone vs. IVT plus MT within 4.5 hrs of symptom onset (unadjusted pooled OR, random-effects meta-analysis).



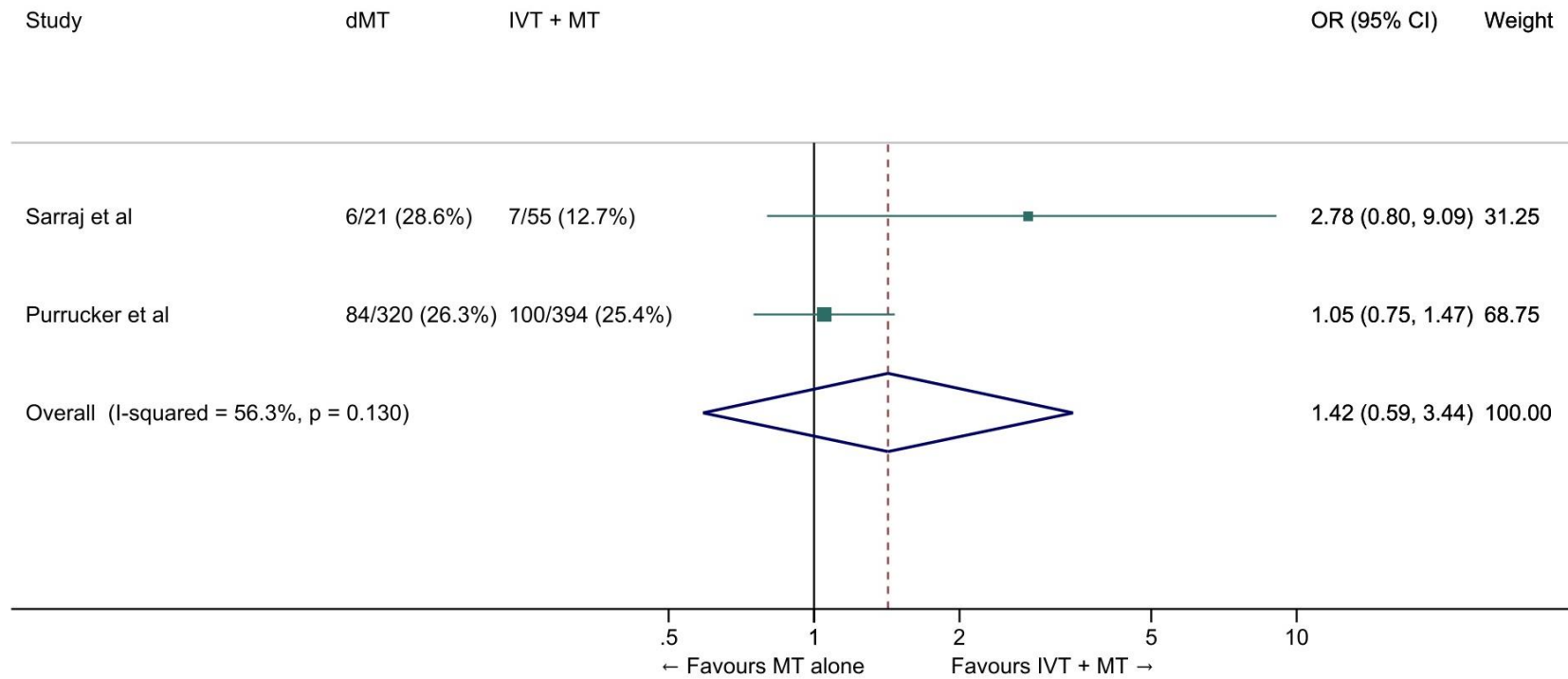
Abbreviations: dMT: direct mechanical thrombectomy (MT alone); IVT: intravenous thrombolysis with alteplase; MT: mechanical thrombectomy.

Figure 11: Excellent outcome (mRS 0-1 at 90 days) in ‘drip-and-ship’ large vessel occlusion stroke patients treated with MT alone vs. IVT plus MT within 4.5 hrs of symptom onset (unadjusted pooled OR, random-effects meta-analysis).



Abbreviations: dMT: direct mechanical thrombectomy (MT alone); IVT: intravenous thrombolysis with alteplase; MT: mechanical thrombectomy.

Figure 12: All-cause mortality at 90 days in ‘drip-and-ship’ large vessel occlusion stroke patients treated with MT alone vs. IVT plus MT within 4.5 hrs of symptom onset (unadjusted pooled OR, random-effects meta-analysis).



Abbreviations: dMT: direct mechanical thrombectomy (MT alone); IVT: intravenous thrombolysis with alteplase; MT: mechanical thrombectomy.

Table 4: GRADE evidence profile for PICO 2

Certainty assessment							№ of patients		Effect		Certainty	Importance
№ of studies	Study design	Risk of bias	Inconsistency	Indirectness	Imprecision	Other considerations	MT alone	IVT + MT	Relative (95% CI)	Absolute (95% CI)		
Good outcome (mRS 0-2 at 90 days)												
2	observational studies ^{49,50}	not serious	not serious	not serious	not serious ^a	none	121/311 (38.9%)	352/703 (50.1%)	OR 0.63 (0.48 to 0.83)	114 fewer per 1 000 (from 176 fewer to 46 fewer)	⊕⊕○○ Low	CRITICAL
Excellent outcome (mRS 0-1 at 90 days)												
2	observational studies ^{46,49}	not serious	not serious	not serious	not serious ^a	none	48/341 (14.1%)	111/449 (24.7%)	OR 0.42 (0.16 to 1.09)	126 fewer per 1 000 (from 197 fewer to 16 more)	⊕⊕○○ Low	CRITICAL
Reduced disability (≥1-point reduction across all mRS-scores at 90 days) - common OR, adjusted analysis												
1	observational study ⁴⁹	not serious	not serious	not serious	serious ^a	strong association			cOR 0.22 (0.07 to 0.69)	-- per 1 000 (from -- to --)	⊕⊕○○ Low	CRITICAL
All-cause mortality at 90 days												
2	observational studies ^{46,49}	not serious	not serious	not serious	not serious ^a	none	90/341 (26.4%)	107/449 (23.8%)	OR 1.42 (0.59 to 3.44)	69 more per 1 000 (from 82 fewer to 280 more)	⊕⊕○○ Low	CRITICAL
Symptomatic intracranial haemorrhage												
1	observational study ⁴⁹	not serious	not serious	not serious	very serious ^a	none	1/21 (4.8%)	5/55 (9.1%)	OR 0.50 (0.06 to 4.55)	43 fewer per 1 000 (from 85 fewer to 222 more)	⊕○○○ Very low	CRITICAL

a. Extremely small number of events

CI: confidence interval; OR: odds ratio

Discussion

Based on newly available data from six recent RCTs, we strongly recommend that patients with anterior circulation LVO ischaemic stroke receive IVT in addition to MT if they are eligible for both treatments. This general recommendation does not exclude individual decision making under specific conditions, such as for patients at particularly high risk of complications from either treatment. A summary of PICO questions, evidence-based recommendations, and expert consensus statements is provided in Table 5.

The main theoretical benefits from withholding IVT for LVO patients eligible for MT are efficacy (potentially low efficacy of IVT in LVO patients⁵³), safety (e.g. reduction in intracranial haemorrhage rate), logistical (time-saving) and economic savings (cost of alteplase).^{54,55} The theoretical advantages of adding IVT include the higher rate of early reperfusion before MT,^{47,56} the potentially higher rate of post-interventional reperfusion with fewer recanalization attempts,⁵⁷ potential benefits in patients with failed MT reperfusion attempts,⁵⁸ and consequent economic gains (reduced disability).

The optimal population to assess non-inferiority of MT alone over bridging therapy seemed to be those patients arriving directly in the MT-capable centre without having received IVT elsewhere (“mothership” paradigm). The study specific pre-specified non-inferiority boundaries were crossed in 4 of the 6 RCTs.^{7,9,11,12} Furthermore, pooled results showed a risk difference of -1.9% (95% CI -5.9% to 2.1%) between MT alone versus bridging therapy for good functional outcome (mRS 0–2) at 90 days. Therefore, data from over 2300 enrolled patients did not lead to the demonstration that MT alone is non-inferior to bridging therapy according to our pre-specified non-inferiority margin (1.3%). This margin was based on results

of a previous survey aiming to determine the minimal clinically relevant increase in proportion of patients achieving good functional outcome when considering a novel and safe neuroprotective agent as clinically worthwhile.¹⁹ Applying this specific minimal clinically important difference as lower non-inferiority margin for withholding IVT may be considered fairly conservative by some.⁵⁹ However, it should be emphasized that non-inferiority of direct MT would not have been demonstrated even using the maximum clinically important non-inferiority margin (5.0%) proposed by our MWG. Only accepting more generous margins, namely 5.9% (i.e. 59 fewer independent outcomes at 90 days among 1000 patients treated with direct MT) would lead to the conclusion of non-inferiority. Whilst a few clinicians might personally consider a 6% margin as acceptable, one must also keep in mind the effect size of previous positive acute stroke trials. Thus, in the guideline-changing ECASS 3 trial of alteplase vs. placebo in the 3-4.5 hour time window, active treatment was associated with a 5% higher rate of good functional outcomes (i.e. 50 more patients with mRS 0-2 per 1000 patients treated).⁶⁰ Furthermore, when considering the socioeconomic dimension, a safe neuroprotective would be cost-effective and clinically worthwhile if it improved the outcome of 2% to 3% of treated patients.^{61 59}

The aims of the present document were to conduct a methodologically rigorous appraisal and synthesis of the available evidence and to provide a practical interpretation of the data in the form of pragmatic recommendations, which may help ensure equity in access to care in different locations and organisational settings. However, some important points need to be considered for the practical application of our recommendations. First, the results of the available RCTs are strictly applicable to “mothership” patients only and must not be extrapolated to patients who receive IVT in other centres (“drip-and-ship”) or are treated by interventionalists from

other centres (“drip-and-drive” or “drip-and-fly”) based mainly on the different times of IVT exposure and interval between start of IVT and MT and thus potentially different effectiveness. The data based on currently available RCTs have no bearing on these “non-mothership” patients and should not be used to guide their management and related logistics. Based on systematic reviews and meta-analyses of the available observational data, we strongly recommend IVT in drip-and-ship patients. Furthermore, short door-to-IVT and door-to-groin times remain critical in optimising the chain of care of patients with acute LVO. Second, the results of the RCTs are only valid for patients who can be treated with IVT within 4.5 hours after symptom onset. Consequently, we could only address the question of whether IVT should be administered in selected patients with unknown time of onset by means of expert consensus. It is noteworthy that in the setting of late time window anterior circulation LVO stroke strong evidence exists on the efficacy of MT,^{62,63} whereas the available evidence for IVT is limited to patients who did not undergo MT.^{36,38} Third, it is important to consider that the RCTs only addressed the question of direct MT vs. bridging therapy in anterior circulation occlusion strokes. However, because the level of evidence for MT in basilar artery occlusion is lower than for anterior circulation occlusion⁶⁴⁻⁶⁶ with no evidence of heterogeneity for the strong treatment effect of IVT,⁶⁷ the MWG members deemed this subgroup as lying outside of the scope of this expedited recommendation document. Fourth, not only the inclusion criteria but also the population actually enrolled in the RCTs should be considered (Table 2). In this regard, even though patients with a very low NIHSS score or a large infarct volume could be enrolled in three of the trials,^{6,8,9} few of such patients were actually randomized and the generalizability of the available results to these populations is therefore uncertain. Fifth, the trials included in this present analysis provide information regarding IVT with alteplase only; reliable evidence for other fibrinolytic agents, such as tenecteplase, or for a combination of antithrombotics, is lacking.

Sixth, at this time none of the subgroup analyses published so far has disclosed a significant modification of the treatment effect in specific situations. Likewise, the rate of sICH ranged from 4.8% to 6.8% in patients randomized to bridging therapy in the five RCTs where the full dose of alteplase was delivered with no evidence of heterogeneity across predefined subgroups. Future individual patient-level meta-analyses of all RCTs might disclose subgroups in whom direct MT is superior to IVT + MT, which could lead to more personalized treatment strategies. Finally, all the trials were conducted using currently available MT devices; as new and more effective devices may lead to faster and more complete reperfusion, updating of the present recommendations may be required in the future.

Table 5: Summary of PICO questions, evidence-based recommendations, and expert consensus statements

Topic / PICO Question	Evidence-based recommendation	Expert consensus statement
<p>Mothership</p> <p>PICO 1: For large vessel occlusion acute ischaemic stroke (≤ 4.5 hrs of symptom onset) patients directly admitted to a thrombectomy capable centre and eligible for both treatments, does mechanical thrombectomy alone compared with intravenous thrombolysis plus mechanical thrombectomy lead to:</p> <ul style="list-style-type: none"> - a non-inferior proportion of patients with good outcome (mRS 0-2) at 90 days? - non-inferior or better results on other efficacy outcomes (whole range of the mRS; mRS 0-1; successful reperfusion)? - a reduction in the risk of adverse events (mortality at 90 days, sICH, any ICH)? - a reduction in key time metrics? 	<p>For patients directly admitted to a thrombectomy-capable centre for an acute ischaemic stroke (≤ 4.5 hrs of symptom onset) with anterior circulation large vessel occlusion and who are eligible for both treatments, we recommend intravenous thrombolysis plus mechanical thrombectomy over mechanical thrombectomy alone.</p> <p>Both treatments should be performed as early as possible after hospital arrival. Mechanical thrombectomy should not prevent the initiation of intravenous thrombolysis and intravenous thrombolysis should not delay mechanical thrombectomy.</p> <p><u>Quality of evidence: Moderate ⊕⊕⊕</u> <u>Strength of recommendation: Strong ↑↑</u></p>	<p>For patients directly admitted to a thrombectomy-capable centre within 4.5 hours of symptom recognition after wake-up ischaemic stroke caused by anterior circulation large vessel occlusion, we suggest intravenous thrombolysis plus mechanical thrombectomy over mechanical thrombectomy alone in selected patients.</p> <p>The selection criteria for IVT and MT for patients with wake-up stroke are detailed in the corresponding European guidelines.^{5,23} Notably, eligibility imaging criteria for IVT include DWI-FLAIR mismatch or perfusion core/penumbra mismatch*.</p> <p>*Perfusion core/penumbra mismatch: - Infarct core** volume < 70 ml - and Critically hypoperfused[†] volume / Infarct core** volume > 1.2 - and Mismatch volume > 10 ml</p> <p>** rCBF <30% (CT perfusion) or ADC < 620 $\mu\text{m}^2/\text{s}$ (Diffusion MRI) [†] Tmax >6s (perfusion CT or perfusion MRI)</p>
<p>Drip-and-ship</p> <p>PICO 2: For large vessel occlusion acute ischaemic stroke (≤ 4.5 hrs of symptom onset) patients admitted to a non-thrombectomy capable centre and eligible for both treatments, does mechanical thrombectomy alone compared with intravenous thrombolysis plus mechanical thrombectomy lead to:</p> <ul style="list-style-type: none"> - a non-inferior proportion of patients with good outcome (mRS 0-2) at 90 days? - non-inferior or better results on other efficacy outcomes (whole range of the mRS; mRS 0-1; successful reperfusion)? - a reduction in the risk of adverse events (mortality at 90 days, sICH, any ICH)? - a reduction in key time metrics? 	<p>For patients admitted to a non-thrombectomy-capable centre for an acute ischaemic stroke (≤ 4.5 hrs of symptom onset) with anterior circulation large vessel occlusion and who are eligible for both treatments, we recommend intravenous thrombolysis followed by rapid transfer to a centre with thrombectomy facilities over omitting intravenous thrombolysis and transfer to a centre with thrombectomy facilities.</p> <p>Intravenous thrombolysis should not delay the transfer to a centre with thrombectomy facilities.</p> <p><u>Quality of evidence: Low ⊕⊕</u> <u>Strength of recommendation: Strong ↑↑</u></p>	<p>For patients admitted to a non-thrombectomy capable centre within 4.5 hours of symptom recognition after wake-up ischaemic stroke caused by anterior circulation large vessel occlusion, we suggest intravenous thrombolysis plus mechanical thrombectomy over mechanical thrombectomy alone in selected patients.</p> <p>The selected criteria for IVT and MT for patients with wake-up stroke are detailed in the corresponding European guidelines.^{5,23} Notably, eligibility imaging criteria for IVT include DWI-FLAIR mismatch or perfusion core/penumbra mismatch*.</p> <p>*Perfusion core/penumbra mismatch: - Infarct core** volume < 70 ml - and Critically hypoperfused[†] volume / Infarct core** volume > 1.2 - and Mismatch volume > 10 ml</p> <p>** rCBF <30% (CT perfusion) or ADC < 620 $\mu\text{m}^2/\text{s}$ (Diffusion MRI) [†] Tmax >6s (perfusion CT or perfusion MRI)</p>

Disclosures

Intellectual and financial disclosures of the module working group members are presented in Supplemental Table 1.

Funding

None.

Informed consent

Not applicable.

Ethical approval

Not applicable.

Guarantors

Guillaume Turc and Jens Fiehler.

Contributorship

Guillaume Turc, Jens Fiehler and Georgios Tsivgoulis wrote the first draft of the manuscript. Guillaume Turc conducted the statistical analysis. All authors reviewed and edited the manuscript and approved the final version of the manuscript.

Acknowledgements

We thank Ale Algra, Eric Vicaut, and Jean-Claude Baron for useful discussions.

References

1. NINDS rtPA Stroke Study Group. Tissue plasminogen activator for acute ischemic stroke. *N Engl J Med.* 1995;333:1581-1587
2. Hacke W, Kaste M, Fieschi C, von Kummer R, Davalos A, Meier D, et al. Randomised double-blind placebo-controlled trial of thrombolytic therapy with intravenous alteplase in acute ischaemic stroke (ECASS II). Second European-Australasian Acute Stroke Study Investigators. *Lancet.* 1998;352:1245-1251
3. Thomalla G, Simonsen CZ, Boutitie F, Andersen G, Berthezene Y, Cheng B, et al. MRI-Guided Thrombolysis for Stroke with Unknown Time of Onset. *N Engl J Med.* 2018;379:611-622
4. Ma H, Campbell BCV, Parsons MW, Churilov L, Levi CR, Hsu C, et al. Thrombolysis Guided by Perfusion Imaging up to 9 Hours after Onset of Stroke. *N Engl J Med.* 2019;380:1795-1803
5. Turc G, Bhogal P, Fischer U, Khatri P, Lobotesis K, Mazighi M, et al. European Stroke Organisation (ESO) - European Society for Minimally Invasive Neurological Therapy (ESMINT) Guidelines on Mechanical Thrombectomy in Acute Ischaemic Stroke Endorsed by Stroke Alliance for Europe (SAFE). *Eur Stroke J.* 2019;4:6-12
6. Yang P, Zhang Y, Zhang L, Zhang Y, Treurniet KM, Chen W, et al. Endovascular Thrombectomy with or without Intravenous Alteplase in Acute Stroke. *N Engl J Med.* 2020;382:1981-1993
7. Suzuki K, Matsumaru Y, Takeuchi M, Morimoto M, Kanazawa R, Takayama Y, et al. Effect of Mechanical Thrombectomy Without vs With Intravenous Thrombolysis on Functional Outcome Among Patients With Acute Ischemic Stroke: The SKIP Randomized Clinical Trial. *JAMA.* 2021;325:244-253
8. Zi W, Qiu Z, Li F, Sang H, Wu D, Luo W, et al. Effect of Endovascular Treatment Alone vs Intravenous Alteplase Plus Endovascular Treatment on Functional Independence in Patients With Acute Ischemic Stroke: The DEVT Randomized Clinical Trial. *JAMA.* 2021;325:234-243
9. LeCouffe NE, Kappelhof M, Treurniet KM, Rinkel LA, Bruggeman AE, Berkhemer OA, et al. A Randomized Trial of Intravenous Alteplase before Endovascular Treatment for Stroke. *N Engl J Med.* 2021;385:1833-1844
10. Katsanos AH, Turc G, Psychogios M, Kaesmacher J, Palaiodimou L, Stefanou MI, et al. Utility of Intravenous Alteplase Prior to Endovascular Stroke Treatment: A Systematic Review and Meta-analysis of RCTs. *Neurology.* 2021;97:e777-e784
11. Fischer U, Gralla J, Investigators. SD. Solitaire with the intention for thrombectomy plus intravenous t-PA versus direct Solitaire stent retriever thrombectomy in acute anterior circulation stroke (SWIFT DIRECT). *Eur Stroke J.* 2021;6:5
12. Mitchell PJ, Yan B, investigators. D-S. A randomized controlled trial of direct endovascular clot retrieval versus standard bridging thrombolysis with endovascular clot retrieval within 4.5 hours of stroke onset. *International journal of stroke.* 2021;16:171-197
13. Ntaios G, Bornstein NM, Caso V, Christensen H, De Keyser J, Diener HC, et al. The European Stroke Organisation Guidelines: a standard operating procedure. *Int J Stroke.* 2015;10 Suppl A100:128-135
14. Steiner T, Dichgans M, Norrving B, Aamodt AH, Berge E, Christensen A, et al. European Stroke Organisation (ESO) standard operating procedure for the preparation and publishing of guidelines. *Eur Stroke J.* 2021;6:CXXII-CXXXIV
15. Guyatt GH, Oxman AD, Schunemann HJ, Tugwell P, Knottnerus A. GRADE guidelines: a new series of articles in the Journal of Clinical Epidemiology. *J Clin Epidemiol.* 2011;64:380-382
16. Saver JL, Chaisinanunkul N, Campbell BCV, Grotta JC, Hill MD, Khatri P, et al. Standardized Nomenclature for Modified Rankin Scale Global Disability Outcomes: Consensus Recommendations From Stroke Therapy Academic Industry Roundtable XI. *Stroke.* 2021;52:3054-3062
17. Wang Y, Wu X, Zhu C, Mossa-Basha M, Malhotra A. Bridging Thrombolysis Achieved Better Outcomes Than Direct Thrombectomy After Large Vessel Occlusion: An Updated Meta-Analysis. *Stroke.* 2021;52:356-365
18. Sterne JAC, Savovic J, Page MJ, Elbers RG, Blencowe NS, Boutron I, et al. RoB 2: a revised tool for assessing risk of bias in randomised trials. *BMJ.* 2019;366:l4898

19. Cranston JS, Kaplan BD, Saver JL. Minimal Clinically Important Difference for Safe and Simple Novel Acute Ischemic Stroke Therapies. *Stroke*. 2017;48:2946-2951
20. DerSimonian R, Laird N. Meta-analysis in clinical trials. *Control Clin Trials*. 1986;7:177-188
21. Pan Y, Chen Q, Zhao X, Liao X, Wang C, Du W, et al. Cost-effectiveness of thrombolysis within 4.5 hours of acute ischemic stroke in China. *PLoS One*. 2014;9:e110525
22. Nogueira RG, Tsivgoulis G. Large Vessel Occlusion Strokes After the DIRECT-MT and SKIP Trials: Is the Alteplase Syringe Half Empty or Half Full? *Stroke*. 2020;51:3182-3186
23. Berge E, Whiteley W, Audebert H, De Marchis GM, Fonseca AC, Padiglioni C, et al. European Stroke Organisation (ESO) guidelines on intravenous thrombolysis for acute ischaemic stroke. *Eur Stroke J*. 2021;6:I-LXII
24. Powers WJ, Rabinstein AA, Ackerson T, Adeoye OM, Bambakidis NC, Becker K, et al. Guidelines for the Early Management of Patients With Acute Ischemic Stroke: 2019 Update to the 2018 Guidelines for the Early Management of Acute Ischemic Stroke: A Guideline for Healthcare Professionals From the American Heart Association/American Stroke Association. *Stroke*. 2019;50:e344-e418
25. Jauch EC, Saver JL, Adams HP, Jr., Bruno A, Connors JJ, Demaerschalk BM, et al. Guidelines for the early management of patients with acute ischemic stroke: a guideline for healthcare professionals from the American Heart Association/American Stroke Association. *Stroke*. 2013;44:870-947
26. Katsanos AH, Malhotra K, Goyal N, Arthur A, Schellinger PD, Kohrmann M, et al. Intravenous thrombolysis prior to mechanical thrombectomy in large vessel occlusions. *Ann Neurol*. 2019;86:395-406
27. Du H, Lei H, Ambler G, Fang S, He R, Yuan Q, et al. Intravenous Thrombolysis Before Mechanical Thrombectomy for Acute Ischemic Stroke: A Meta-Analysis. *J Am Heart Assoc*. 2021;10:e022303
28. Jang KM, Choi HH, Jang MJ, Cho YD. Direct Endovascular Thrombectomy Alone vs. Bridging Thrombolysis for Patients with Acute Ischemic Stroke : A Meta-analysis. *Clin Neuroradiol*. 2021
29. Zhang J, Chen S, Shi S, Zhang Y, Kong D, Xie Y, et al. Direct endovascular treatment versus bridging therapy in patients with acute ischemic stroke eligible for intravenous thrombolysis: systematic review and meta-analysis. *J Neurointerv Surg*. 2021
30. Li H, Yang S, Zhong Y, Wang J, Li X, Gao H, et al. Mechanical Thrombectomy with or without Intravenous Thrombolysis in Acute Ischemic Stroke: A Meta-Analysis for Randomized Controlled Trials. *Eur Neurol*. 2021:1-10
31. Requena M, Olive-Gadea M, Muchada M, Hernandez D, Rubiera M, Boned S, et al. Direct to Angiography Suite Without Stopping for Computed Tomography Imaging for Patients With Acute Stroke: A Randomized Clinical Trial. *JAMA Neurol*. 2021;78:1099-1107
32. Fischer U, Kaesmacher J, P SP, Butikofer L, Mordasini P, Deppeler S, et al. SWIFT DIRECT: Solitaire With the Intention For Thrombectomy Plus Intravenous t-PA Versus DIRECT Solitaire Stent-retriever Thrombectomy in Acute Anterior Circulation Stroke: Methodology of a randomized, controlled, multicentre study. *Int J Stroke*. 2021:17474930211048768
33. Treurniet KM, LeCouffe NE, Kappelhof M, Emmer BJ, van Es A, Boiten J, et al. MR CLEAN-NO IV: intravenous treatment followed by endovascular treatment versus direct endovascular treatment for acute ischemic stroke caused by a proximal intracranial occlusion-study protocol for a randomized clinical trial. *Trials*. 2021;22:141
34. Ringleb P, Bendszus M, Bluhmki E, Donnan G, Eschenfelder C, Fatar M, et al. Extending the time window for intravenous thrombolysis in acute ischemic stroke using magnetic resonance imaging-based patient selection. *Int J Stroke*. 2019;14:483-490
35. Davis SM, Donnan GA, Parsons MW, Levi C, Butcher KS, Peeters A, et al. Effects of alteplase beyond 3 h after stroke in the Echoplanar Imaging Thrombolytic Evaluation Trial (EPITHET): a placebo-controlled randomised trial. *Lancet Neurol*. 2008;7:299-309
36. Campbell BCV, Ma H, Ringleb PA, Parsons MW, Churilov L, Bendszus M, et al. Extending thrombolysis to 4.5-9 h and wake-up stroke using perfusion imaging: a systematic review and meta-analysis of individual patient data. *Lancet*. 2019;394:139-147
37. Koga M, Yamamoto H, Inoue M, Asakura K, Aoki J, Hamasaki T, et al. Thrombolysis With Alteplase at 0.6 mg/kg for Stroke With Unknown Time of Onset: A Randomized Controlled Trial. *Stroke*. 2020;51:1530-1538
38. Thomalla G, Boutitie F, Ma H, Koga M, Ringleb P, Schwamm LH, et al. Intravenous alteplase for stroke with unknown time of onset guided by advanced imaging: systematic review and meta-analysis of individual patient data. *Lancet*. 2020;396:1574-1584

39. Roaldsen MB, Lindekleiv H, Eltoft A, Jusufovic M, Soyland MH, Petersson J, et al. Tenecteplase in wake-up ischemic stroke trial: Protocol for a randomized-controlled trial. *Int J Stroke*. 2021;1747493020984073
40. Tsvigoulis G, Saqqur M, Sharma VK, Brunser A, Eggers J, Mikulik R, et al. Timing of Recanalization and Functional Recovery in Acute Ischemic Stroke. *J Stroke*. 2020;22:130-140
41. Romoli M, Paciaroni M, Tsvigoulis G, Agostoni EC, Vidale S. Mothership versus Drip-and-Ship Model for Mechanical Thrombectomy in Acute Stroke: A Systematic Review and Meta-Analysis for Clinical and Radiological Outcomes. *J Stroke*. 2020;22:317-323
42. Sarraj A, Savitz S, Pujara D, Kamal H, Carroll K, Shaker F, et al. Endovascular Thrombectomy for Acute Ischemic Strokes: Current US Access Paradigms and Optimization Methodology. *Stroke*. 2020;51:1207-1217
43. Aguiar de Sousa D, von Martial R, Abilleira S, Gattringer T, Kobayashi A, Gallofre M, et al. Access to and delivery of acute ischaemic stroke treatments: A survey of national scientific societies and stroke experts in 44 European countries. *Eur Stroke J*. 2019;4:13-28
44. Southerland AM, Johnston KC, Molina CA, Selim MH, Kamal N, Goyal M. Suspected Large Vessel Occlusion: Should Emergency Medical Services Transport to the Nearest Primary Stroke Center or Bypass to a Comprehensive Stroke Center With Endovascular Capabilities? *Stroke*. 2016;47:1965-1967
45. Milne MS, Holodinsky JK, Hill MD, Nygren A, Qiu C, Goyal M, et al. Drip 'n Ship Versus Mothership for Endovascular Treatment: Modeling the Best Transportation Options for Optimal Outcomes. *Stroke*. 2017;48:791-794
46. Purrucker JC, Heyse M, Nagel S, Gumbinger C, Seker F, Mohlenbruch M, et al. Efficacy and safety of bridging thrombolysis initiated before transfer in a drip-and-ship stroke service. *Stroke Vasc Neurol*. 2021
47. Seners P, Turc G, Naggara O, Henon H, Piotin M, Arquizan C, et al. Post-Thrombolysis Recanalization in Stroke Referrals for Thrombectomy: Incidence, Predictors, and Prediction Scores. *Stroke*. 2018;49:2975-2982
48. Mueller L, Pult F, Meisterernst J, Heldner MR, Mono ML, Kurmann R, et al. Impact of intravenous thrombolysis on recanalization rates in patients with stroke treated with bridging therapy. *Eur J Neurol*. 2017;24:1016-1021
49. Sarraj A, Grotta J, Albers GW, Hassan AE, Blackburn S, Day A, et al. Clinical and Neuroimaging Outcomes of Direct Thrombectomy vs Bridging Therapy in Large Vessel Occlusion: Analysis of the SELECT Cohort Study. *Neurology*. 2021;96:e2839-e2853
50. Di Maria F, Mazighi M, Kyheng M, Labreuche J, Rodesch G, Consoli A, et al. Intravenous Thrombolysis Prior to Mechanical Thrombectomy in Acute Ischemic Stroke: Silver Bullet or Useless Bystander? *J Stroke*. 2018;20:385-393
51. Pérez de la Ossa N, Abilleira S, Jiménez X. Transfer to the Local Stroke Center versus Direct Transfer to Endovascular Center of Acute Stroke Patients with Suspected Large Vessel Occlusion in the Catalan Territory (RACECAT). *European Stroke Organisation Conference*. 2020
52. McTaggart RA, Moldovan K, Oliver LA, Dibiasio EL, Baird GL, Hemendinger ML, et al. Door-in-Door-Out Time at Primary Stroke Centers May Predict Outcome for Emergent Large Vessel Occlusion Patients. *Stroke*. 2018;49:2969-2974
53. Seners P, Turc G, Maier B, Mas JL, Oppenheim C, Baron JC. Incidence and Predictors of Early Recanalization After Intravenous Thrombolysis: A Systematic Review and Meta-Analysis. *Stroke*. 2016;47:2409-2412
54. Fischer U, Kaesmacher J, Mendes Pereira V, Chapot R, Siddiqui AH, Froehler MT, et al. Direct Mechanical Thrombectomy Versus Combined Intravenous and Mechanical Thrombectomy in Large-Artery Anterior Circulation Stroke: A Topical Review. *Stroke*. 2017;48:2912-2918
55. Ospel JM, McDonough R, Kunz WG, Goyal M. Is concurrent intravenous alteplase in patients undergoing endovascular treatment for large vessel occlusion stroke cost-effective even if the cost of alteplase is only US\$1? *J Neurointerv Surg*. 2021
56. Tsvigoulis G, Katsanos AH, Schellinger PD, Kohrmann M, Varelas P, Magoufis G, et al. Successful Reperfusion With Intravenous Thrombolysis Preceding Mechanical Thrombectomy in Large-Vessel Occlusions. *Stroke*. 2018;49:232-235
57. Fischer U, Kaesmacher J, Molina CA, Selim MH, Alexandrov AV, Tsvigoulis G. Primary Thrombectomy in tPA (Tissue-Type Plasminogen Activator) Eligible Stroke Patients With Proximal Intracranial Occlusions. *Stroke*. 2018;49:265-269

58. Rozes C, Maier B, Gory B, Bourcier R, Kyheng M, Labreuche J, et al. Influence of prior intravenous thrombolysis on outcome after failed mechanical thrombectomy: ETIS registry analysis. *J Neurointerv Surg.* 2021
59. Lin CH, Saver JL, Ovbiagele B, Huang WY, Lee M. Endovascular thrombectomy without versus with intravenous thrombolysis in acute ischemic stroke: a non-inferiority meta-analysis of randomized clinical trials. *J Neurointerv Surg.* 2021
60. Hacke W, Kaste M, Bluhmki E, Brozman M, Davalos A, Guidetti D, et al. Thrombolysis with alteplase 3 to 4.5 hours after acute ischemic stroke. *N Engl J Med.* 2008;359:1317-1329
61. Samsa GP, Matchar DB. Have randomized controlled trials of neuroprotective drugs been underpowered? An illustration of three statistical principles. *Stroke.* 2001;32:669-674
62. Albers GW, Marks MP, Kemp S, Christensen S, Tsai JP, Ortega-Gutierrez S, et al. Thrombectomy for Stroke at 6 to 16 Hours with Selection by Perfusion Imaging. *N Engl J Med.* 2018;378:708-718
63. Nogueira RG, Jadhav AP, Haussen DC, Bonafe A, Budzik RF, Bhuva P, et al. Thrombectomy 6 to 24 Hours after Stroke with a Mismatch between Deficit and Infarct. *N Engl J Med.* 2018;378:11-21
64. Langezaal LCM, van der Hoeven E, Mont'Alverne FJA, de Carvalho JJF, Lima FO, Dippel DWJ, et al. Endovascular Therapy for Stroke Due to Basilar-Artery Occlusion. *N Engl J Med.* 2021;384:1910-1920
65. Liu X, Dai Q, Ye R, Zi W, Liu Y, Wang H, et al. Endovascular treatment versus standard medical treatment for vertebrobasilar artery occlusion (BEST): an open-label, randomised controlled trial. *Lancet Neurol.* 2020;19:115-122
66. Schonewille WJ, Wijman CA, Michel P, Rueckert CM, Weimar C, Mattle HP, et al. Treatment and outcomes of acute basilar artery occlusion in the Basilar Artery International Cooperation Study (BASICS): a prospective registry study. *Lancet Neurol.* 2009;8:724-730
67. Dornak T, Kral M, Hazlinger M, Herzig R, Veverka T, Burval S, et al. Posterior vs. anterior circulation infarction: demography, outcomes, and frequency of hemorrhage after thrombolysis. *Int J Stroke.* 2015;10:1224-1228