



FDG-PET/CT in Lymphoma: Where Do We Go Now?

Yassine Al Tabaa, Clement Bailly, Salim Kanoun

► To cite this version:

Yassine Al Tabaa, Clement Bailly, Salim Kanoun. FDG-PET/CT in Lymphoma: Where Do We Go Now?. *Cancers*, 2021, 13 (20), pp.5222. 10.3390/cancers13205222 . inserm-03540811

HAL Id: inserm-03540811

<https://inserm.hal.science/inserm-03540811>

Submitted on 24 Jan 2022

HAL is a multi-disciplinary open access archive for the deposit and dissemination of scientific research documents, whether they are published or not. The documents may come from teaching and research institutions in France or abroad, or from public or private research centers.

L'archive ouverte pluridisciplinaire **HAL**, est destinée au dépôt et à la diffusion de documents scientifiques de niveau recherche, publiés ou non, émanant des établissements d'enseignement et de recherche français ou étrangers, des laboratoires publics ou privés.

Perspective

FDG-PET/CT in Lymphoma: Where Do We Go Now?

Yassine Al Tabaa ^{1,*} , Clement Bailly ^{2,3}  and Salim Kanoun ^{4,5} 

¹ Scintidoc Nuclear Medicine Center, 25 rue de Clémentville, 34070 Montpellier, France

² CRCINA, INSERM, CNRS, Université d'Angers, Université de Nantes, 44093 Nantes, France; clement.bailly@chu-nantes.fr

³ Nuclear Medicine Department, University Hospital, 44093 Nantes, France

⁴ Nuclear Medicine Department, Institut Claudius Regaud, 31100 Toulouse, France; kanoun.salim@iuct-oncopole.fr

⁵ Cancer Research Center of Toulouse (CRCT), Team 9, INSERM UMR 1037, 31400 Toulouse, France

* Correspondence: yassine.altabaa@scintidoc.fr

Simple Summary: We focus on the role and current applications of 18F-fluorodeoxyglucose positron emission tomography combined with computed tomography in the management of lymphoma patients through improved staging or treatment response assessment or through early PET-driven therapeutic strategies, leading the way to a novel area of personalized medicine, optimizing disease control and toxicity. We discuss the potential future directions of innovative metabolic metrics that are being developed, notably to assess response to new immunotherapy regimens and to provide an improved prognostic factor for predicting patients' survival. Finally, we present new radiopharmaceuticals developed following the identification of pathways or specific receptors in lymphomas, providing great opportunities for molecular imaging in treatment evaluation and management.

Abstract: 18F-fluorodeoxyglucose positron emission tomography combined with computed tomography (FDG-PET/CT) is an essential part of the management of patients with lymphoma at staging and response evaluation. Efforts to standardize PET acquisition and reporting, including the 5-point Deauville scale, have enabled PET to become a surrogate for treatment success or failure in common lymphoma subtypes. This review summarizes the key clinical-trial evidence that supports PET-directed personalized approaches in lymphoma but also points out the potential place of innovative PET/CT metrics or new radiopharmaceuticals in the future.

Keywords: FDG-PET; lymphomas; Deauville 5PS



Citation: Al Tabaa, Y.; Bailly, C.; Kanoun, S. FDG-PET/CT in Lymphoma: Where Do We Go Now? *Cancers* **2021**, *13*, 5222. <https://doi.org/10.3390/cancers13205222>

Academic Editors: Fabrizio Pane, Francesco Bertolini and Silvana Del Vecchio

Received: 13 September 2021

Accepted: 15 October 2021

Published: 18 October 2021

Publisher's Note: MDPI stays neutral with regard to jurisdictional claims in published maps and institutional affiliations.



Copyright: © 2021 by the authors. Licensee MDPI, Basel, Switzerland. This article is an open access article distributed under the terms and conditions of the Creative Commons Attribution (CC BY) license (<https://creativecommons.org/licenses/by/4.0/>).

1. Introduction

Over the past several decades, positron emission tomography coupled with computed tomography using 18F-fluorodeoxyglucose (FDG-PET/CT), a tracer of glucose metabolism, has been considered as state-of-the-art imaging and provided the most significant improvement compared to conventional imaging in staging lymphoma [1,2]. At baseline, FDG-PET/CT evaluation offers a better staging than conventional CT especially for extra nodal involvement. For tumor response evaluation, the ability to differentiate necrotic residual mass usually seen with CT from FDG-avid tumor persistence was one of the first clinical successes of this functional imaging modality. Currently, FDG-PET/CT appears as an effective surrogate of lymphoma cell viability and is used to assess tumor response, not only at the end of treatment to decide on salvage therapy, but also during treatment with therapeutic impact to either maximize response with a more intensive regimen for slowly responding patients or reduce toxicity for early good responders and thus personalize the treatment to each patient risk. In the near future, new PET driven metrics may be implemented in treatment decisions as new prognostic factors calculated on PET/CT images provide an interesting additional value to known prognostic parameters in several lymphoma subtypes.

In this article, we focus on the current applications and future directions of FDG-PET/CT in managing patients with lymphoma through the development of new metabolic metrics as well as new radiopharmaceuticals.

2. Baseline Evaluation

FDG-PET/CT have shown better diagnostic performance than CT, especially for extra nodal involvement, as this functional imaging is able to identify tumor lesions with high glucose metabolism when no significant abnormalities are detected by CT. This led to treatment modification in several cases in which FDG-PET/CT evaluation caused upstaging of lymphoma patients.

Interestingly, FDG-PET/CT provides a better evaluation of bone marrow involvement compared to bone marrow biopsy that evaluates a very limited sample of bone marrow, whereas an FDG scan can identify focal involvement in the whole body. Invasive bone marrow biopsy is no longer indicated for the routine staging of Hodgkin lymphomas (HL) and most diffuse large B-cell lymphomas (DLBCL), and FDG-PET/CT has become the gold standard for the assessment of bone marrow invasion [3–5].

The baseline acquisition is also needed as reference to evaluate treatment response and is also used to calculate innovative PET driven metrics that will be described later in this review.

3. Interpretation Criteria Standardization and Response Evaluation Endpoints

Several interpretation criteria have been proposed to assess tumor response in lymphoma. The first FDG-PET/CT trials focused on the characterization of residual masses after end of treatment, as it was known that residual masses in CT were not strongly related to a treatment failure and thus patient's evaluations were often classified as "Unconfirmed Complete Response" [6,7].

In 2009, in an international workshop held in Deauville (France), a standardization of these residual masses' characterization was proposed in order to compare results across trials. This visual 5-point scale (5PS), named the Deauville score, is currently a widely used interpretation criteria in lymphoma and has even been derived to evaluate other solid cancers. The Deauville score has been reshaped in the recent Lugano classification, which introduces tumor response additionally to residual masses' characterization but still mainly relies on Deauville score definitions. As a result, FDG-PET/CT was formally incorporated into standard staging and response assessment of FDG-avid lymphoma.

In the Lugano classification, Deauville scores 1 to 3 (residual uptake lower or equivalent to liver background) are considered as complete metabolic response (CMR), whereas 5PS scores 4 and 5 (residual uptake higher than liver background) are considered either no-metabolic-response (NMR, no change from baseline), partial metabolic response (PMR, reduced uptake compared to baseline), or progressive metabolic disease (PMD, increased uptake or new lesion). This Lugano classification has demonstrated good prognostic value and excellent inter-observer reproducibility and should now be considered as the method of choice for standardization of FDG-PET/CT reports.

Systematic surveillance exams in patients with a negative FDG-PET/CT at the end of treatment, in particular in patients with HL or DLBCL, are no longer recommended since it was found to be associated with false positives and increased radiation exposure with no evidence of benefit in patient outcome [8,9].

The recent introduction of immunomodulatory agents may complicate response assessment due to the development of a flare reaction or pseudo-progression in response to these agents. Provisional criteria have been proposed (Lymphoma Response to Immunomodulatory Therapy Criteria, LYRIC) with the introduction of the term "Indeterminate Response" to address such lesions. Renewed imaging after 12 weeks to distinguish pseudo-progression from real progressive disease is recommended [10]. A recent study from the Lymphoma Study Association (LYSA) showed that the LYRIC classification could be useful, but only for early evaluation [11]. This work found some pseudo-progression af-

ter four cycles of atezolizumab, venetoclax, and obinutuzumab (GATA trial) in relapsed or refractory (R/R) DLBCL and follicular lymphoma (FL). However, no pseudo-progression was seen at cycle 8.

All these recommendations have improved risk stratification in patients with lymphoma and result in a clearer identification of non-responders with a significant prognostic benefit. This strong clinical impact has been reported in large cohorts of patients with the most frequent lymphoma subtypes (HL, DLBCL and FL; detailed below) and is also supported by cost-effectiveness analyses [12,13].

FDG-PET/CT exams allow prediction of outcome after completion of treatment, and they also provide insights for a risk-adapted strategy to distinguish poorly responding patients requiring additional therapy, from good responders who may be exempt from part of the standard therapy, thereby limiting toxicity. The concept of interim PET (iPET) emerged in the last ten years and allows for analyzing a continuous metabolic process during treatment [14,15]. When performed after one or two cycles, iPET allows for evaluating the response of cells with the highest level of proliferation and identifying early responding chemosensitive patients without the requirement of a negative iPET at this stage. Moreover, when performed after three or four cycles, it identifies late responding patients as well as tumor regrowth (patients with iPET negative after two cycles but iPET positive after four cycles). The aim of iPET is to adapt the treatment to the intermediate response: on the one hand to de-escalate the treatment of chemosensitive patients (negative iPET) in order to limit long-term toxicity with satisfactory tumor control, and on the other hand to escalate the treatment of slow responder patients (positive iPET) and reverse their poor prognosis. Current FDG-PET/CT interpretation criteria are presented in Figure 1.

	DLBCL	HL	FL
Baseline	SUVmax Nodal sites above/under the diaphragm Extranodal sites Bone marrow involvement	Bulky mass Nodal sites above/under the diaphragm Extranodal sites Bone marrow involvement	SUVmax and SUVmax-gradient Nodal sites above/under the diaphragm Extranodal sites Bone marrow involvement If suspicion of aggressive transformation : identify the optimal site to biopsy for confirmation
C2	>60y, aalPI= 0-1, Limited stage Lugano criteria 18-60y, aalPI= 1-3, Advanced stage $\Delta\text{SUV}_{\text{max}} > 66\%$ *	Limited stage Lugano criteria Advanced stage Lugano criteria (D4 : >140% Foie)	None
C4	>60y, aalPI= 0-1, Limited stage Lugano criteria 18-60y, aalPI= 1-3, Advanced stage $\Delta\text{SUV}_{\text{max}} > 70\%$ *	Limited stage Lugano criteria Advanced stage Lugano criteria (D4 : >140% Foie)	none
End of treatment	Lugano criteria	Lugano criteria	Lugano criteria

$\Delta\text{SUV}_{\text{max}}$ Applications : C2 and/or C4 for Advanced DLBCL Formula : $\Delta\text{SUV}_{\text{max}} = \frac{\text{baseline PETSUV}_{\text{max}} - \text{iPETSUV}_{\text{max}}}{\text{baseline PETSUV}_{\text{max}}}$ Limits (as proposed by the GAINED protocol) : * If $\text{SUV}_{\text{max}} < 10$ at baseline or if $\text{SUV}_{\text{max}} > 5$ at C2 or C4 , use Lugano criteria	Visual-5 Point Scale Deauville criteria : D1 : no uptake or no residual uptake D2 : uptake \leq blood pool (mediastinum) D3 : uptake \leq liver D4 : uptake slightly to moderately > liver except for advanced HL at C2/C4 evaluation (D4 > 140% liver) D5 : markedly increased uptake or any new lesion Lugano criteria CMR : D1-3 PMR : D4/5 uptake \searrow SD : D4/5 uptake \approx MPD : D4/5 uptake \nearrow or new lesion
---	--

Figure 1. FDG-PET/CT criteria for staging and response assessment in lymphoma (aalPI: age-adjusted International Prognostic Index; C2: after 2 cycles of chemotherapy; C4: after 4 cycles of chemotherapy; DLBCL: diffuse large B-cell lymphoma; FL: follicular lymphoma; HL: Hodgkin lymphoma; SUVmax: maximum standard uptake value).

3.1. Advance in Hodgkin Lymphoma

The prognosis of HL has been improved with the new therapy regimens established over the last decades, including ABVD (doxorubicin, bleomycin, vinblastine, and dacarbazine) and BEACOPP (bleomycin, etoposide, doxorubicin, cyclophosphamide, vincristine,

procarbazine, and prednisone) [16,17]. In parallel, significant developments occurred in the field of medical imaging at baseline and for monitoring response to therapy. FDG-PET/CT now holds a primary role in treatment planning because it evaluates the functional activity of tumor cells and appears to be much more relevant than CT, which measures the tumor size.

Two response assessment timings are now approved, including iPET during the first line of chemotherapy, and end-of-treatment FDG-PET/CT after the first line of chemotherapy (\pm radiotherapy).

Early treatment evaluation performed after two cycles of chemotherapy by iPET has shown a high prognostic value in several studies [15,18,19] with a high negative predictive value of 80–90% and a lower positive predictive value of 50–55%. iPET showing a residual tumor uptake after two cycles of chemotherapy (iPET2+) was associated with lower progression free and overall survival (PFS and OS, respectively) for patients treated with an ABVD or BEACOPP regimen [18,20,21], and outperformed the International Prognostic Index in patient's prognosis identification. In this context, functional imaging with iPET has been evaluated in early and advanced stage HL in several large randomized trials including a PET-driven strategy to optimize disease control or to reduce long-term toxicity.

The intergroup randomized study H10 [22], conducted by the European Organization for Research and Treatment of Cancer (EORTC), LYSA, and Italian Lymphoma Foundation (FIL) included 1950 early stage HL patients with favorable or unfavorable risk factors according to EORTC/LYSA criteria. iPET2 negative patients received two additional cycles (in the favorable group) or four additional cycles of ABVD (in the unfavorable group) without radiotherapy. The study was interrupted because of a greater number of relapses in the without-radiotherapy strategy (6.2% vs. 2.3% in the standard arm). The final evaluation (median follow-up of 45 months) showed a significant difference in 5-year-PFS between patients exposed (99%) and not exposed to radiotherapy (87%) in the favorable group, whereas no difference was found in the unfavorable group (92% vs. 89%, respectively).

In the H10 trial [23], iPET2+ patients were randomized between two cycles of escalated BEACOPP (BEAesc) followed by involved node radiation therapy (INRT) (30 Gy) or continuing ABVD followed by INRT (30 Gy) to evaluate the benefits of a treatment escalation in iPET2+ patients. A significantly better 5y-PFS was observed in patients in the BEAesc arm compared to those pursuing ABVD cycles (91% vs. 77%). These results suggested that the treatment of patients with localized HL should be monitored by PET in routine practice to allow for treatment intensification of iPET2+ patients' with BEAesc to enhance disease control in this subgroup of patients. This H10 trial was based on the older International Harmonization Project (IHP) PET criteria [24], originally intended for end-of-treatment assessment. The Deauville score seems to be applicable in daily practice for the intermediate evaluation of early stage HL patients as it displayed high inter-reader reproducibility and good predictive value [25,26].

The RAPID trial [27,28] included 602 HL patients with favorable disease (stages I–IIA) and no mediastinal bulk receiving three cycles of ABVD, and 571 of them were evaluated by FDG-PET/CT (iPET3). iPET3 positive patients (5PS 3–5) received one additional cycle of ABVD and 30 Gy involved field radiotherapy (IFRT). Nearly three quarters of patients (74.6%) had negative iPET3 (5PS 1 or 2) and were randomly assigned to receive 30 Gy IFRT or no further treatment. Among iPET3 negative patients, the 3y-PFS was 94.6% in the IFRT arm vs. 90.8% in the arm without radiotherapy. It should be noted that, in order to select patients presenting the most suitable profile for therapy de-escalation, the definition of PET negativity in the RAPID trial excluded Deauville score 3, which might seem to contradict the current Lugano classification. However, the final analysis of the RAPID trial did not endorse this de-escalation strategy, and PET negativity defined by Deauville score (DS1–3 vs. DS4–5) reshaped in the Lugano classification seems to be the optimal standard for therapy response evaluation in HL.

In advanced stage disease (stages IIB-IV), BEAesc in the HD18 trial [29] has demonstrated superiority in terms of PFS compared to ABVD-based therapy but without evidence of OS benefits, as non-responder patients to ABVD that had a salvage therapy showed OS similar to that of good responder patients [30]. Furthermore, this regimen showed a greater prevalence of short-term and long-term toxicities, including infertility [17], secondary leukemia, and myelodysplasia [16].

Two interesting approaches were investigated to limit BEAesc exposure. The first strategy proposed treatment escalation for poor responders after two cycles of ABVD by introducing the BEAesc. In the RATHL Study [31], after two cycles of ABVD and evaluation by FDG-PET/CT, patients with no pathological residual uptake on iPET2 (iPET2−) were randomized between 4 ABVD vs 4 AVD, and iPET2+ patients were escalated with 4 BEACOPP-14 or 3 BEACOPPesc. In the iPET2− group, no significant difference was found in the 3y-PFS between patients treated with ABVD vs. AVD (85.7% vs. 84.4%, respectively) suggesting it was unnecessary to add bleomycin for these patients. Moreover, 16% of patients presented iPET2+ and were treated by BEACOPP or BEAesc with a 3y-PFS rate of 67.5%. Similar results were observed in the Italian phase II trial showing a 62% 2y-PFS in the iPET2+ subset of patients after two cycles of ABVD receiving four cycles of BEAesc plus four cycles of baseline BEACOPP [32,33].

The second approach was a reverse strategy evaluating treatment de-escalation for good metabolic PET2− responders after two cycles of BEAesc because the negative predictive value of PET2 is significantly superior to its positive predictive value.

The AHL2011 trial [34,35] included 820 advanced stage HL patients and compared a standard arm in which patients received 6 BEAesc to an experimental arm in which patients received 2 BEAesc followed by ABVD for iPET2− patients, or four additional BEAesc cycles for iPET2+ patients. Results showed that de-escalation strategy was possible since 5y-PFS was similar in both arms (86.2% in the standard arm vs. 85.7% in the experimental arm, $p = 0.65$) with 87% of iPET2− patients in the experimental arm (vs. 88% in the standard arm) (median follow-up of 50.4 months). This demonstrated the possibility of underexposing treated patients and limiting the risks of immediate and late toxicity, confirmed by the rate of serious adverse events significantly lower in the experimental arm (72% vs. 41%, $p < 0.00001$). Furthermore, in both arms, a new time point for FDG-PET/CT decisional evaluation was investigated after four cycles (iPET4), its positivity being considered as a treatment failure and iPET4+ patients being eligible for salvage therapy. Thus, three prognostic groups were identified according to the full PET-driven strategy (iPET2/4) with a 5y-PFS of 90.9% (iPET2−, iPET4−), 75.4% (iPET2+, iPET4−), and 46.5% (iPET4+). This strategy offers an interesting stratification of the patients that is more relevant than the classical biological parameters as prognostic analysis of factors affecting PFS revealed that in multivariate analysis only the results of the complete strategy including iPET2/iPET4 remained significant.

The HD18 trial [29] included 434 advanced stage HL patients treated with 2 BEAesc. iPET2− patients were randomized between the standard arm with six additional cycles of BEAesc or the experimental arm with two additional BEAesc. iPET2− definition only comprised Deauville scores 1 and 2 whereas Deauville score 3 was regarded as positive. iPET2− was observed in 52% patients as opposed to 87% patients in the AHL2011 trial. This difference probably came from PET positivity criteria. The AHL2011 trial used a more specific definition for positivity excluding Deauville score 3 and including Deauville 4 with a maximum residual Standardized Uptake Value (SUVmax) >140% of liver background to enhance reproducibility between readers. The Deauville score threshold used in the HD18 trial (DS1–2 vs. DS3–5) likely lacked specificity and was not pertinent for stratification of patients, as iPET2− and iPET2+ patients, with a median follow-up of 33 months, presented comparable PFS (90.8% vs. 89.7%).

3.2. Advance in DLBCL

During the past several years, significant prolonged survival in DLBCL has been observed in all age groups, particularly with the addition of a chimeric anti-CD20 monoclonal antibody, rituximab, to intensive cytotoxic chemotherapeutic regimens: cyclophosphamide, doxorubicin, vincristine, and prednisone (R-CHOP) [36]. Interim PET has been assessed as a potential biomarker of the early success or failure of R-CHOP in multiple studies in being able to predict those patients that are unlikely to respond to first line treatment rather than waiting for treatment to fail. As in Hodgkin's lymphoma, it is possible to differentiate the prognosis of patients according to the response after two cycles (PET2) using the Deauville score (5PS1-3 vs. 5PS4-5). A study has also shown the benefit of evaluating the early response in 114 DLBCL patients based on the reduction in SUVmax by comparing the most hypermetabolic lesion at baseline versus the most hypermetabolic lesion on PET2 [37]. The interest of the deltaSUVmax (Δ SUVmax) (fixed at 66% after two cycles) compared to the visual analysis lies in a better inter-observer reproducibility ($K = 0.83$ vs. 0.66 , respectively) as well as a better prognostic stratification in terms of 3y-PFS (80% vs. 40% according to the (Δ SUVmax); 81% vs. 59% according to Deauville Score).

The randomized phase II DLBCL LNH 2007-3B [38] including young patients (18–60 years) with unfavorable risk factors (aaIPI 2-3) investigated RCAVBP14 vs. RCHOP14 with an interim metabolic evaluation after two and four cycles. Patients who were double iPET negative (iPET2−/iPET4−) received immunochemotherapy according to their randomization arm. Slow responding patients (iPET2+/iPET4−) received intensification with ASCT. iPET4+ patients were eligible for a salvage therapy. Importantly, this PET-guided strategy reduced the number of patients undergoing intensified therapy in this population by approximately 25% compared to historical series, without adversely affecting the overall survival rate. Yet, in this study, the criteria used at this time were the IHP criteria with the same accuracy problems described in HL. The combination of iPET2 and Δ SUVmax seemed preferable than simple visual interpretation based on IHP criteria alone. Indeed, semiquantitative analysis with Δ SUVmax at iPET2 and iPET4 better predicted PFS and OS than visual analysis. The latter showed an excessive number of iPET2+ and iPET4+ results, resulting in a low predictive value for PFS and OS. Using SUVmax reduction data, 78% of iPET2+ and 80% of iPET4+ patients had a favorable 2y-PFS (77% and 83%, respectively). These good results had to be validated prospectively since the patients were not stratified on these criteria for consolidation.

The phase III prospective study GAINED [39] randomized two arms with a combination of standard chemotherapy (RACVBP14 or RCHOP14) associated with Rituximab in one arm and GA101 in the other. The same PET strategy was adopted, and consolidation was decided based on PET response. Early responders (iPET2−/iPET4−) continued with randomized chemotherapy, slow responder patients (iPET2+/iPET4−) were autografted, and non-responders after cycle 4 received salvage therapy. In this study patients were stratified on SUVmax reduction criteria. A cut-off of 66% reduction was used for iPET2 scans and a cut-off of 70% was used for iPET4 [38]. Sixty-nine percent of patients were double negative with a 2y-PFS of 90%. Slow responder patients represented 15% of all patients and did not show any difference with the first population (PFS 84.9%) after benefiting from ASCT. The third subset representing 16% of patients showed a significant lower 2y-PFS evaluated at 61.2%. Similar results were obtained in OS with no difference in the two first subsets (iPET2−/iPET4− and iPET2+/iPET4−, 2y-OS = 94.1% and 91.4%, respectively), and the third subset with a significantly lower but acceptable OS (83.1%). Conversely, another randomized controlled trial comparing different treatment approaches in aggressive B lymphoma [40,41] has used Δ SUVmax to stratify patients without success. In the PETAL study, iPET2 poor responders after a treatment with RCHOP14 were randomized between continuation of RCHOP vs. a Burkitt-like protocol (B-ALL protocol). The results showed that patients' outcome was not modified according to the randomized treatment. In particular, the Burkitt-like intensification did not make it possible to reverse the pejorative prognostic value of iPET2+.

Recently an individual patient data meta-analysis was built to determine the optimal timing and optimal PET positivity criteria for interim PET to predict response in 1977 DLBCL patients from the PETRA database [42]. All patients had an interim PET following one to four cycles of therapy. A cut-off of 66% reduction was used for PET scans after one, two, or three cycles and a cut-off of 70% was used for iPET after four cycles. Only iPET2 and iPET4 were able to significantly discriminate responders from non-responders with higher hazard ratios (HR) for iPET4 (HR = 2.36 and 3.67 for iPET2 and iPET4, respectively). Regarding iPET negative patients, there was no significant difference in PFS using any of the response criteria at the four assessed time points. iPET2, thus appeared as the optimal timing to identify responders, as there was no significant increase in survival at later times, regardless of PET criteria, whereas iPET4 might be the optimal timing to identify non-responders. These data confirmed the potential role of iPET in the design of response-adapted trials. Nevertheless, efforts should be made to improve the strategy with the use of adapted and reproducible positivity and interpretation criteria in order to optimize the efficacy/tolerance ratio of the treatment.

Despite the fact that FDG-PET/CT is accepted as the current gold standard for response assessment, 15–20% of DLBCL patients with metabolic CR will experience disease recurrence. The exploration of additional response assessment approaches is justified. Growing evidence is emerging on the value of next-generation sequencing techniques to identify minimal residual disease and circulating tumor cell DNA to assess response [43]. FDG PET/CT imaging has transformed the way lymphoma patients are managed. It is now regarded as key to accurate staging and has been adopted as the basis for broadly accepted response criteria. The inclusion of molecular genetic and biomarker studies could enhance the sensitivity and specificity of FDG-PET/CT, increase its negative and positive predictive values, and strengthen the role of this major imaging technique in the care of lymphoma patients.

3.3. Advance in FL

FL represents the most common indolent lymphoma and can have a variety of clinical presentations [44]. About 95% of all FL present with FDG avidity. Thereby, FDG-PET/CT showed better diagnostic performance than CT since it upstaged approximately 10–60% of patients with early stages to advanced stages [45,46], contributing to improvement in PFS. Furthermore, it could be useful to more precisely identify patients eligible for curative treatment and guide biopsy for diagnostic confirmation or suspicion of transformation. However, bone marrow biopsy is still recommended as the gold standard for diagnosis of bone marrow invasion.

Regarding response assessment, the Deauville Score analysis of post-induction FDG-PET/CT seemed to represent, in this histologic subtype also, a helpful prognostic tool. It better identifies patients with no active metabolic disease (complete metabolic responses) compared to the CT-based or IHP response evaluation criteria [47] with improved PFS and OS.

3.4. Advance in Mantle Cell Lymphoma

Mantle Cell Lymphoma (MCL) is an aggressive subtype of NHL that represents about 5% of all NHLs [48]. The value of FDG-PET/CT evaluation in MCL has not been extensively studied up to now. Nevertheless, its value at baseline showed a good sensitivity for initial staging [49]. Moreover, several works studied the possible benefit of early and end-of-treatment metabolic assessment in MCL, although these findings must be confirmed and validated through prospective studies. In this context, metabolic information could be considered in the MCL treatment strategy in order to identify good and poor patients that may benefit from more aggressive treatment.

The LyMa-PET study [50,51] issued from the LyMa trial evaluating the predictive value of FDG-PET/CT at diagnosis in untreated MCL patients, highlighted a SUVmax cut off (>10.3) associated with poorer PFS ($p = 0.0003$) and OS ($p = 0.0003$). SUVmax appears to

have an even greater prognostic value when combined with clinical and biological biomarkers [52]. Indeed, IPI score combined to SUVmax allowed classifying patients with MCL into distinct risk categories with different PFS length: low (29%; no relapse/progression), intermediate (42%; median PFS: 37 months) and high risk (29%, median PFS: 22 months). These observations were also found in the LyMa-PET study [51]. The identification of patients at very high risk of early progression after first line therapy should allow FDG-PET/CT to be definitely integrated into the treatment strategy in order to improve the management of the disease.

4. Metabolic Evaluation in the Immunomodulatory Therapy Era

FDG-PET also plays an essential part in the management of patients resistant to chemotherapy that may benefit from therapies with different mechanisms of action. Immunotherapy, relying on enhancing the immune response to the tumor, is a highly attractive approach for the management of many tumor types. As described above, advances in immunomodulatory treatments that impact on the interpretation of imaging have led to the need to revise criteria for staging and response. The LYRIC criteria, proposed by Cheson et al., introduced a new response category, Indeterminate Response. This approach integrates possible pseudoprogression [53] described with checkpoint inhibitors and also immune modulators in general, in order to avoid stopping a therapy that is actually effective, and mandates additional biopsies or reimaging after 12 weeks.

In addition, studies with immune checkpoint inhibitors and bi-specific T-cell engagers have shown the promise of T-cells in the treatment of cancer. To be effective, T-cells must have the right specificity for a tumor, be available in adequate amounts, and overwhelm any local immunosuppressive environment. Chimeric antigen receptor (CAR) engineered T-cells may address these issues and have generated considerable expectations. Axicabtagene ciloleucel (axi-cel) and tisagenlecleucel (tisa-cel) are engineered autologous T-cells for which a subject's individual T-cells are harvested and genetically modified to target CD19 expressed on the surface of B-cell lymphomas. In August 2018, axi-cel and tisa-cel were given approval in Europe for R/R DLBCL and transformed FL (trFL) after two or more lines of systemic therapy. These approvals were supported by two large trials [54–56]. In the JULIET trial, Tisa-cel resulted in increased overall response rate (ORR) of 52%, with a 40% CR rate and median OS of 12 months. In the ZUMA-1 trial, Axi-cel led to an 83% ORR, a 58% CR rate, and a median OS of 25.6 months. In these studies, Lugano criteria were used and after CAR T-cell therapy, CR of FDG-avid lesions can be as long as 9–12 months.

5. New Metrics

5.1. Total Metabolic Tumor Volume

In the last few years, TMTV has been proposed as a new prognostic parameter in various lymphoma subtypes.

TMTV is a quantification of the whole-body tumor burden using FDG-PET/CT images. This quantification relies on a segmentation of each tumor uptake in the full body acquisitions [57,58].

Initially explored in retrospective series, this new quantification has been validated in ancillary studies of clinical trials and may be implemented in prospective trials to tailor risk adapted treatment strategy.

5.1.1. HL

Tumor burden quantification in HL has been done for decades and such quantification has been historically based on clinical evaluation and planar radiography in the 1990s and on computed tomography starting in 2000 [59,60].

As functional imaging provides better sensitivity in tumor staging, it provides a better tumor burden quantification, especially regarding the extra nodal involvement compared to conventional imaging.

Thus, several papers have now assessed the clinical prognostic value of TMTV in HL.

For early stage HL, a TMTV over 147 mL has been shown to be prognostic of PFS and OS and, interestingly, this prognostic value is additional to the interim response evaluation at two cycles identifying a subgroup of patient having initial high tumor burden and partial response at two cycles with a very low outcome (5y-PFS 25%) [61].

This prognostic value in early stage has also been shown in another retrospective series of 267 patients and has been proposed as a parameter to reclassify early GHSG unfavorable group as the TMTV split this population in subgroups having a survival similar to that of favorable early stage group for TMTV < 268 mL and to advanced HL for TMTV > 268 mL [62].

In advanced HL, data are still insufficient. In an ancillary study of the HD18 trial, TMTV was predictive of PET2 positivity but was not statistically significant for survival prediction. However, this study suffers from the very limited number of events (16 events) in this series [63].

The TMTV analysis of the AHL2011 showed promising results for the interim survival analysis but it is still awaiting validation in the final follow up analysis [64].

Finally, prognostic interest has also been shown in relapsed HL and provides an additional prognostic value complementary to PET response evaluation before autologous stem cell transplantation [65]. Thus, TMTV calculation at relapse could also be used to tailor salvage therapy strategies in relapsed HL.

5.1.2. DLBCL

In DLBCL, baseline TMTV has been proposed as a prognostic factor in various studies [66] and recently confirmed by the analysis of the PETAL trial, showing that baseline TMTV over 328 mL was predictive of a poorer outcome and this prognostic value is additional to the response evaluation using Δ SUVmax criteria. The combination of both baseline TMTV and Δ SUVmax, similarly to Hodgkin Lymphoma, identifies three prognostic subgroups of patients with PFS ranging from 91% (low TMTV, complete response) to 30% (high TMTV, no complete response) [67].

The combination of TMTV and tumor gene expression has also shown interesting prognostic value by allowing patient risk stratification additionally to the GCB/ABC phenotype [68,69].

TMTV has been reported to influence rituximab exposure during first line therapy in a pharmacological study and thus could be used to adjust the therapeutic index by using a personalized dose of rituximab [70].

Interestingly, TMTV seems to represent a promising prognostic tool, as a high tumor volume may correlate with a more severe cytokine release syndrome [71,72]. However, further explorations are needed to confirm these findings.

5.1.3. FL

TMTV showed a prognostic value when assessed before first line therapy of FL since patients with a TMTV > 510 mL have a lower PFS. In FL, TMTV was reported to be moderately correlated ($r = 0.6$) with circulating tumor and cell free DNA, showing different prognostic values. This suggests that these two tumor burden quantifications may be used in combination as a new prognostic tool [73].

5.1.4. Issues to Solve

To implement TMTV in therapeutic decisions several issues are still to be solved.

Despite a large number of clinical studies with concordant conclusion in TMTV prognostic value, the TMTV cut off value to distinguish patients has significant variability.

This is probably due to different criteria in patient selection and different methodologies to segment PET/CT images as several segmentation thresholds have been proposed with a clear impact on TMTV values [57,74–76]. A consensual segmentation methodology is still pending.

The second issue to solve is the automatization of TMTV calculation. This automatization has been dramatically improved thanks to new deep learning algorithms that are now showing very good accuracy in reproducing user manual segmentation [77,78]. These algorithms still need a comparative approach to select the best method to be implemented in a medical viewer to provide a valuable automatic segmentation that will reduce the variability of the manual delineation of TMTV and thus improve reproducibility and acceptability of this whole-body segmentation for nuclear medicine physicians.

Lastly, the clinical value of TMTV derived parameters is still to be evaluated, notably TLG (Total Lesion Glycolysis), which is the product of TMTV and SUV_{mean}, as reported in some studies. This index is highly correlated with TMTV and its prognostic strength may be more specific to some lymphoma subgroups.

5.2. Radiomics

“Radiomics” is a generic word for medical image measurement used as image descriptor and prognostic tool. By that definition, TMTV or simple SUV_{max} measurement could be considered as “Radiomics”. However this term often refers to more sophisticated image calculation such as shape or textural analysis [79].

Radiomic analysis results in thousands of possible quantifications parameters (a significant part of them are correlated to each other) [57,80,81].

5.2.1. Textural Approaches

A common quantification in the radiomics field is textural analysis. This approach quantifies tumor distribution of uptake values, either at a local level (pixel by pixel or voxel by voxel) or regional (groups of pixels/voxels of near intensity). Hundreds of parameters could be calculated from these approaches and thus results are not easy to interpret or to reproduce.

However, this textural approach has shown capabilities to identify patients prognosis in DLBCL [82,83] or mantle lymphoma [84,85] or to constitute a diagnostic parameter for the detection of bone marrow involvement [86].

5.2.2. Whole Body Tumor Geometry Approaches

Another radiomics approach is to quantify tumor distribution spatially in the body with quantification indexes such as spread distance and fragmentation.

The tumor spread calculation could be calculated easily by computing the maximal distance between tumoral uptakes. This parameter called D_{max} has been shown to be additionally prognostic to TMTV in quantifying the ability of the tumor to spread independently from its mass [87]. This parameter in combination with TMTV allows identifying new prognostic subgroups.

Another approach proposed is to calculate tumor fragmentation. This could be done by calculating the surface to volume ratio. If the tumor burden is fragmented in multiple small uptakes it will expose a higher surface compared to the total metabolic tumor volume and this constitutes a quantification of the tumor/host interface that could influence therapeutic response in many ways and has shown interesting prognostic value [88].

5.2.3. Remaining Issues for Radiomics Parameters

As with TMTV, these radiomics approaches are still lacking standardization.

First of all, radiomics quantifications rely on initial tumor segmentation, and thus are affected by the same issues presented earlier in TMTV quantifications (lack of consensual segmentation methodology, inter-reader reproducibility, time consumption).

Additionally, described parameters had historically non-consensual implementation, which has now significantly improved thanks to Image Biomarker Standardisation Initiative (ISBI) editing references for radiomics terms and calculations that are now available in several software packages, providing reproducible radiomics quantifications [89].

Finally, due to the high amount of available quantifications, results are difficult to interpret and sometimes difficult to link to a physiopathological process. However future clinical data should make it possible to select some robust and valuable parameters that could be included to tailor risk personalized strategies.

6. PET Tracers in Lymphoma beyond FDG

As described above, FDG remains today the leading PET tracer for routine molecular imaging in haematology and oncology, and its benefits and limits are extensively reported. Yet, while FDG-PET/CT has quickly found its place in the diagnostic, prognostic, and therapeutic evaluation of patients with lymphoma, it is among patients with solid tumors that other tracers are most successful today. Indeed, molecular imaging of lymphomas, beyond the context of radioimmunotherapy, has not been fully exploited while there is undoubtedly a demand for more precise probes targeting other metabolic pathways or specific receptors in lymphomas. Main targets are presented in Figure 2. Among others, the tendency towards complex engineered therapies for haematological malignancies relying on phenotypic or genetic tumor characteristics provides great opportunities for molecular imaging in therapeutic management.

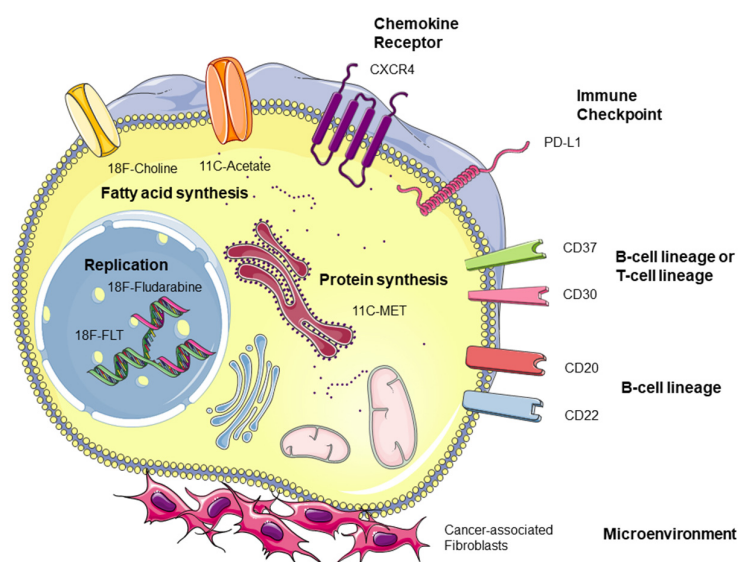


Figure 2. Receptors and metabolic pathways for molecular imaging applications in lymphoma.

6.1. Explorations of Other Metabolic Pathways

The use of 18F-Fluorothymidine (FLT) and 11C-Methionine (MET), amino-acid tracers whose uptake indirectly reflects cellular proliferation, was reported. Preliminary results with MET in children and young adults with HL demonstrated limited results [90], as opposed to studies with FLT showing a good correlation with lymphoma lesions and a sensitivity at baseline similar to FDG [91]. A higher specificity of FLT uptake especially in regards to post therapeutic inflammation suggested improved assessment of treatment response and prediction of outcome [92–97]. Larger studies on the usefulness of FLT-PET/CT in the evaluation of lymphoma patients with FDG-avid residual masses at the end of treatment may be worth considering.

Based on fludarabine, a drug already used in low grade lymphomas, 18F-Fludarabine (2-[18F] fluoro-9-β-D-arabinofuranosyl-adenine) also appears as a good candidate to enhance diagnostic accuracy and therapeutic evaluation especially in low or heterogeneous FDG-avid lymphoma, showing high selectivity for lymphoid cells, regardless of the cell cycle [98–101]. Pre-clinical studies and first-in-humans reports [101], in DLBCL and chronic lymphoid leukaemia patients, demonstrated lower uptake in inflammatory cells compared to FDG and a better correlation with histology than the latter. Good sensitivity of 18F-Fludarabine for detection of indolent lymphomas lesions was reported [101] without

uptake on inflammatory lesions, thus avoiding false-positive results. Further explorations are warranted and an exploratory, multicenter prospective clinical trial for initial staging and therapeutic evaluation in DLBCL, HL, and FL is ongoing.

In addition to their widespread use in solid cancers, the performance of lipid tracers also looks promising in lymphoma, although the literature is currently more limited. Tsuchiya et al. have compared the value of ¹¹C-acetate and FDG-PET/CT in a small series of patients [102] with apparent greater sensitivity of ¹¹C-acetate in the detection of indolent lymphomas. The performance of ¹⁸F-Choline is only reported through accidental findings [103–105]. These results need to be verified in larger homogeneous populations.

6.2. Phenotypic Imaging

The spread of phenotypic PET imaging using monoclonal antibodies (mAbs) or peptides provides a set of non-invasive options to investigate *in vivo* targets' expression and distribution and to acquire robust diagnostic, prognostic, and theranostic information. So far, in lymphoma, the vast majority of studies focusing on phenotypic imaging have evaluated in the context of radioimmunotherapy for mAbs distribution, pharmacokinetics, and absorbed radiation doses [106,107] targeting, among others, CD20, CD22, CD30, or CD37. Moreover, beyond the numerous preclinical studies, most of them investigated SPECT/CT imaging that provides lower spatial resolution and specificity. Therefore, despite the potential of molecular imaging for the acquisition of target-specific information in the context of immunomodulatory therapy and personalized medicine [108–110], it has not played an important role in lymphoma to date. However, a few studies, albeit in small and heterogeneous populations, have reported interesting results, especially with CD20, the most frequently studied target, including the importance of preloading on the biodistribution of tracers [111], the exploration of CD20 expression in patients having relapsed after rituximab treatment [111,112], or even the confirmation of the absence of benefit of this therapy in primary central nervous system lymphoma patients [113].

A novel and promising target is CXC chemokine receptor 4 (CXCR4). This transmembrane receptor is involved in the cell migration process and in the homing of hematopoietic stem cells to the bone marrow compartment. Several studies reported the use of ⁶⁸Ga-Pentixafor that showed a high contrast in CXCR4-expressing lymphomas [114–117]. Furthermore, for a theranostic approach, its therapeutic properties are currently under investigation, radiolabeled with β - or α -emitters [118]. Preliminary results are encouraging with good tolerance of the treatment and promising initial response rates in NHL patients.

Fibroblast activation protein inhibitor (FAPi) also emerges as a new and highly promising probe for diagnostic and possibly theranostic application in various neoplasms including lymphoma. FAP is overexpressed by cancer-associated fibroblasts (CAFs) present in tumor microenvironment, which provides a high tumor uptake and a very low accumulation in normal tissues, resulting in excellent signal-to-noise ratios [119,120].

Finally, another area for future development of PET imaging in lymphoma is the rise of immunomodulatory therapy options, such as immune checkpoint inhibitors and CAR T-cells therapy. Indeed, despite the lack of literature in haematological neoplasia, these applications generate many expectations in view of the importance of these two therapeutic options in NHL. In this way, a recent study reported the feasibility of PET imaging with radiolabeled programmed cell death-ligand 1 (PD-L1) mAbs for the assessment of therapy in solid malignancies [121]. Huge challenges remain in monitoring response to CAR-T cells therapy. A potential solution might be the tracking of CAR-T cells [122,123]. Molecular imaging, through visualization of the biodistribution of CAR-T cells, may offer unique information on the targeting of lymphoma lesions. In addition, CD19 imaging could be employed to identify patients presenting loss of expression of CD19, a key mechanism of resistance for patients receiving this therapy.

7. Conclusions

FDG-PET/CT stands as the main imaging modality in lymphoma. Compared to computed tomography, FDG-PET/CT improves staging and end of treatment evaluation, including improved residual mass evaluation by discriminating between fibrosis and remaining disease.

Early assessment of response to therapy demonstrated strong prognostic value, and a series of recent prospective randomized phase III studies confirmed the early PET-driven therapeutic strategy, leading the way to a novel area of personalized medicine, optimizing disease control and toxicity.

New FDG-PET/CT parameters are being developed to assess response to new immunotherapy regimens and provide an improved prognostic factor for predicting patients' survival. Radiomics in particular is a very challenging area of research. In contrast to histological biopsy-based invasive biomarkers that examine a limited area of tumor, radiomics non-invasively investigates the entire lesion or disease. Because visualizing tumor heterogeneity is crucial for assessing the aggressiveness and prognosis of lymphoma, radiomics might offer tremendous possibilities in the management of these patients.

Finally, the identification of pathways or specific receptors in lymphomas has enabled the development of new radiopharmaceuticals providing great opportunities for molecular imaging in treatment evaluation and management. It is unclear whether these radionuclide probes besides FDG will have a part to play in clinical routine diagnostics. However, the tendency for very advanced treatments, which depend on the genetic and phenotypic composition of lymphoma cells, provides exciting opportunities for nuclear medicine in the context of immunotherapy and personalized medicine. Ultimately, molecular imaging could lead to greater cost-effectiveness by allowing candidate selection for expensive targeted therapies, among which CXCR4 is a serious candidate. Other new tracers, such as FAPI, could be used in addition to ¹⁸F-FDG-PET/CT imaging, specifically in indolent lymphoma patients.

Author Contributions: Y.A.T., C.B. and S.K. have directly participated in the review process and in the writing of this paper and have read and approved the final version submitted. All authors have read and agreed to the published version of the manuscript.

Funding: This research received no external funding.

Conflicts of Interest: The authors declare no conflict of interest.

References

- Cheson, B.D. Role of Functional Imaging in the Management of Lymphoma. *J. Clin. Oncol.* **2011**, *29*, 1844–1854. [\[CrossRef\]](#)
- Barrington, S.F.; Mikhaeel, N.G.; Kostakoglu, L.; Meignan, M.; Hutchings, M.; Müller, S.P.; Schwartz, L.H.; Zucca, E.; Fisher, R.I.; Trotman, J.; et al. Role of Imaging in the Staging and Response Assessment of Lymphoma: Consensus of the International Conference on Malignant Lymphomas Imaging Working Group. *J. Clin. Oncol.* **2014**, *32*, 3048–3058. [\[CrossRef\]](#) [\[PubMed\]](#)
- Cheson, B.D.; Fisher, R.I.; Barrington, S.F.; Cavalli, F.; Schwartz, L.H.; Zucca, E.; Lister, T.A.; Alliance, Australasian Leukaemia and Lymphoma Group; Eastern Cooperative Oncology Group; European Mantle Cell Lymphoma Consortium; et al. Recommendations for Initial Evaluation, Staging, and Response Assessment of Hodgkin and Non-Hodgkin Lymphoma: The Lugano Classification. *J. Clin. Oncol.* **2014**, *32*, 3059–3068. [\[CrossRef\]](#) [\[PubMed\]](#)
- El-Galaly, T.C.; d'Amore, F.; Mylam, K.J.; de Nully Brown, P.; Bøgsted, M.; Bukh, A.; Specht, L.; Loft, A.; Iyer, V.; Hjorthaug, K.; et al. Routine Bone Marrow Biopsy Has Little or No Therapeutic Consequence for Positron Emission Tomography/Computed Tomography-Staged Treatment-Naïve Patients with Hodgkin Lymphoma. *J. Clin. Oncol.* **2012**, *30*, 4508–4514. [\[CrossRef\]](#) [\[PubMed\]](#)
- Khan, A.B.; Barrington, S.F.; Mikhaeel, N.G.; Hunt, A.A.; Cameron, L.; Morris, T.; Carr, R. PET-CT Staging of DLBCL Accurately Identifies and Provides New Insight into the Clinical Significance of Bone Marrow Involvement. *Blood* **2013**, *122*, 61–67. [\[CrossRef\]](#)
- MacManus, M.P.; Seymour, J.F.; Hicks, R.J. Overview of Early Response Assessment in Lymphoma with FDG-PET. *Cancer Imaging* **2007**, *7*, 10–18. [\[CrossRef\]](#) [\[PubMed\]](#)
- Juweid, M.E.; Stroobants, S.; Hoekstra, O.S.; Mottaghy, F.M.; Dietlein, M.; Guermazi, A.; Wiseman, G.A.; Kostakoglu, L.; Scheidhauer, K.; Buck, A.; et al. Use of Positron Emission Tomography for Response Assessment of Lymphoma: Consensus of the Imaging Subcommittee of International Harmonization Project in Lymphoma. *J. Clin. Oncol.* **2007**, *25*, 571–578. [\[CrossRef\]](#) [\[PubMed\]](#)

8. Liedtke, M.; Hamlin, P.A.; Moskowitz, C.H.; Zelenetz, A.D. Surveillance Imaging during Remission Identifies a Group of Patients with More Favorable Aggressive NHL at Time of Relapse: A Retrospective Analysis of a Uniformly-Treated Patient Population. *Ann. Oncol.* **2006**, *17*, 909–913. [\[CrossRef\]](#)
9. Zinzani, P.L.; Stefoni, V.; Tani, M.; Fanti, S.; Musuraca, G.; Castellucci, P.; Marchi, E.; Fina, M.; Ambrosini, V.; Pellegrini, C.; et al. Role of [18F]Fluorodeoxyglucose Positron Emission Tomography Scan in the Follow-up of Lymphoma. *J. Clin. Oncol.* **2009**, *27*, 1781–1787. [\[CrossRef\]](#)
10. Cheson, B.D.; Ansell, S.; Schwartz, L.; Gordon, L.I.; Advani, R.; Jacene, H.A.; Hoos, A.; Barrington, S.F.; Armand, P. Refinement of the Lugano Classification Lymphoma Response Criteria in the Era of Immunomodulatory Therapy. *Blood* **2016**, *128*, 2489–2496. [\[CrossRef\]](#)
11. Al Tabaa, Y.; Casasnovas, O.; Baillet, C.; Bachy, E.; Virelizier, E.N.; de Colella, J.M.S.; Bailly, C.; Kanoun, S.; Guidez, S.; Gyan, E.; et al. Prospective Evaluation of Lymphoma Response to Immunomodulatory Therapy Criteria (Lyric) in Gata Trial from the Lysa Group. *Hematol. Oncol.* **2021**, *39*, 335–336. [\[CrossRef\]](#)
12. Mamot, C.; Klingbiel, D.; Hitz, F.; Renner, C.; Pabst, T.; Driessen, C.; Mey, U.; Pless, M.; Bargetzi, M.; Krasniqi, F.; et al. Final Results of a Prospective Evaluation of the Predictive Value of Interim Positron Emission Tomography in Patients With Diffuse Large B-Cell Lymphoma Treated With R-CHOP-14 (SAKK 38/07). *J. Clin. Oncol.* **2015**, *33*, 2523–2529. [\[CrossRef\]](#)
13. Trotman, J.; Luminari, S.; Boussetta, S.; Versari, A.; Dupuis, J.; Tychyj, C.; Marcheselli, L.; Berriolo-Riedinger, A.; Franceschetto, A.; Julian, A.; et al. Prognostic Value of PET-CT after First-Line Therapy in Patients with Follicular Lymphoma: A Pooled Analysis of Central Scan Review in Three Multicentre Studies. *Lancet Haematol.* **2014**, *1*, e17–e27. [\[CrossRef\]](#)
14. Pregno, P.; Chiappella, A.; Bellò, M.; Botto, B.; Ferrero, S.; Franceschetti, S.; Giunta, F.; Ladetto, M.; Limerutti, G.; Menga, M.; et al. Interim 18-FDG-PET/CT Failed to Predict the Outcome in Diffuse Large B-Cell Lymphoma Patients Treated at the Diagnosis with Rituximab-CHOP. *Blood* **2012**, *119*, 2066–2073. [\[CrossRef\]](#)
15. Biggi, A.; Gallamini, A.; Chauvie, S.; Hutchings, M.; Kostakoglu, L.; Gregianin, M.; Meignan, M.; Malkowski, B.; Hofman, M.S.; Barrington, S.F. International Validation Study for Interim PET in ABVD-Treated, Advanced-Stage Hodgkin Lymphoma: Interpretation Criteria and Concordance Rate among Reviewers. *J. Nucl. Med.* **2013**, *54*, 683–690. [\[CrossRef\]](#) [\[PubMed\]](#)
16. Engert, A.; Diehl, V.; Franklin, J.; Lohri, A.; Dörken, B.; Ludwig, W.-D.; Koch, P.; Hänel, M.; Pfreundschuh, M.; Wilhelm, M.; et al. Escalated-Dose BEACOPP in the Treatment of Patients with Advanced-Stage Hodgkin's Lymphoma: 10 Years of Follow-up of the GHSG HD9 Study. *J. Clin. Oncol.* **2009**, *27*, 4548–4554. [\[CrossRef\]](#)
17. Behringer, K.; Mueller, H.; Goergen, H.; Thielen, I.; Eibl, A.D.; Stumpf, V.; Wessels, C.; Wiehlputz, M.; Rosenbrock, J.; Halbsguth, T.; et al. Gonadal Function and Fertility in Survivors after Hodgkin Lymphoma Treatment within the German Hodgkin Study Group HD13 to HD15 Trials. *J. Clin. Oncol.* **2013**, *31*, 231–239. [\[CrossRef\]](#) [\[PubMed\]](#)
18. Gallamini, A.; Hutchings, M.; Rigacci, L.; Specht, L.; Merli, F.; Hansen, M.; Patti, C.; Loft, A.; Di Raimondo, F.; D'Amore, F.; et al. Early Interim 2-[18F]Fluoro-2-Deoxy-D-Glucose Positron Emission Tomography Is Prognostically Superior to International Prognostic Score in Advanced-Stage Hodgkin's Lymphoma: A Report from a Joint Italian-Danish Study. *J. Clin. Oncol.* **2007**, *25*, 3746–3752. [\[CrossRef\]](#) [\[PubMed\]](#)
19. Rossi, C.; Kanoun, S.; Berriolo-Riedinger, A.; Dygai-Cochet, I.; Humbert, O.; Legouge, C.; Chrétien, M.L.; Bastie, J.-N.; Brunotte, F.; Casasnovas, R.-O. Interim 18F-FDG PET SUVmax Reduction Is Superior to Visual Analysis in Predicting Outcome Early in Hodgkin Lymphoma Patients. *J. Nucl. Med.* **2014**, *55*, 569–573. [\[CrossRef\]](#)
20. Zinzani, P.L.; Rigacci, L.; Stefoni, V.; Broccoli, A.; Puccini, B.; Castagnoli, A.; Vaggelli, L.; Zanoni, L.; Argnani, L.; Baccarani, M.; et al. Early Interim 18F-FDG PET in Hodgkin's Lymphoma: Evaluation on 304 Patients. *Eur. J. Nucl. Med. Mol. Imaging* **2012**, *39*, 4–12. [\[CrossRef\]](#)
21. Hutchings, M.; Loft, A.; Hansen, M.; Pedersen, L.M.; Buhl, T.; Jurlander, J.; Buus, S.; Keiding, S.; D'Amore, F.; Boesen, A.-M.; et al. FDG-PET after Two Cycles of Chemotherapy Predicts Treatment Failure and Progression-Free Survival in Hodgkin Lymphoma. *Blood* **2006**, *107*, 52–59. [\[CrossRef\]](#)
22. Raemaekers, J.M.M.; André, M.P.E.; Federico, M.; Girinsky, T.; Oumedaly, R.; Brusamolino, E.; Brice, P.; Fermé, C.; van der Maazen, R.; Gotti, M.; et al. Omitting Radiotherapy in Early Positron Emission Tomography-Negative Stage I/II Hodgkin Lymphoma Is Associated with an Increased Risk of Early Relapse: Clinical Results of the Preplanned Interim Analysis of the Randomized EORTC/LYSA/FIL H10 Trial. *J. Clin. Oncol.* **2014**, *32*, 1188–1194. [\[CrossRef\]](#)
23. André, M.P.E.; Girinsky, T.; Federico, M.; Reman, O.; Fortpied, C.; Gotti, M.; Casasnovas, O.; Brice, P.; van der Maazen, R.; Re, A.; et al. Early Positron Emission Tomography Response-Adapted Treatment in Stage I and II Hodgkin Lymphoma: Final Results of the Randomized EORTC/LYSA/FIL H10 Trial. *J. Clin. Oncol.* **2017**, *35*, 1786–1794. [\[CrossRef\]](#)
24. Cheson, B.D. The International Harmonization Project for response criteria in lymphoma clinical trials. *Hematol. Oncol. Clin. North Am.* **2007**, *5*, 841–854. [\[CrossRef\]](#)
25. Meignan, M.; Gallamini, A.; Meignan, M.; Gallamini, A.; Haioun, C. Report on the First International Workshop on Interim-PET-Scan in Lymphoma. *Leuk. Lymphoma* **2009**, *50*, 1257–1260. [\[CrossRef\]](#)
26. Gallamini, A.; Barrington, S.F.; Biggi, A.; Chauvie, S.; Kostakoglu, L.; Gregianin, M.; Meignan, M.; Mikhaeel, G.N.; Loft, A.; Zaucha, J.M.; et al. The Predictive Role of Interim Positron Emission Tomography for Hodgkin Lymphoma Treatment Outcome Is Confirmed Using the Interpretation Criteria of the Deauville Five-Point Scale. *Haematologica* **2014**, *99*, 1107–1113. [\[CrossRef\]](#)

27. Barrington, S.F.; Phillips, E.H.; Counsell, N.; Hancock, B.; Pettengell, R.; Johnson, P.; Townsend, W.; Culligan, D.; Popova, B.; Clifton-Hadley, L.; et al. Positron Emission Tomography Score Has Greater Prognostic Significance Than Pretreatment Risk Stratification in Early-Stage Hodgkin Lymphoma in the UK RAPID Study. *J. Clin. Oncol.* **2019**, *37*, 1732–1741. [[CrossRef](#)] [[PubMed](#)]
28. Radford, J.; Illidge, T.; Counsell, N.; Hancock, B.; Pettengell, R.; Johnson, P.; Wimperis, J.; Culligan, D.; Popova, B.; Smith, P.; et al. Results of a Trial of PET-Directed Therapy for Early-Stage Hodgkin's Lymphoma. *N. Engl. J. Med.* **2015**, *372*, 1598–1607. [[CrossRef](#)] [[PubMed](#)]
29. Borchmann, P.; Haverkamp, H.; Lohri, A.; Mey, U.; Kreissl, S.; Greil, R.; Markova, J.; Feuring-Buske, M.; Meissner, J.; Dührsen, U.; et al. Progression-Free Survival of Early Interim PET-Positive Patients with Advanced Stage Hodgkin's Lymphoma Treated with BEACOPPescalated Alone or in Combination with Rituximab (HD18): An Open-Label, International, Randomised Phase 3 Study by the German Hodgkin Study Group. *Lancet Oncol.* **2017**, *18*, 454–463. [[CrossRef](#)] [[PubMed](#)]
30. Viviani, S.; Zinzani, P.L.; Rambaldi, A.; Brusamolino, E.; Levis, A.; Bonfante, V.; Vitolo, U.; Pulsoni, A.; Liberati, A.M.; Specchia, G.; et al. ABVD versus BEACOPP for Hodgkin's Lymphoma When High-Dose Salvage Is Planned. *N. Engl. J. Med.* **2011**, *365*, 203–212. [[CrossRef](#)] [[PubMed](#)]
31. Johnson, P.; Federico, M.; Kirkwood, A.; Fosså, A.; Berkahn, L.; Carella, A.; d'Amore, F.; Enblad, G.; Franceschetto, A.; Fulham, M.; et al. Adapted Treatment Guided by Interim PET-CT Scan in Advanced Hodgkin's Lymphoma. *N. Engl. J. Med.* **2016**, *374*, 2419–2429. [[CrossRef](#)]
32. Gallamini, A.; Tarella, C.; Viviani, S.; Rossi, A.; Patti, C.; Mulé, A.; Picardi, M.; Romano, A.; Cantonetti, M.; La Nasa, G.; et al. Early Chemotherapy Intensification With Escalated BEACOPP in Patients With Advanced-Stage Hodgkin Lymphoma With a Positive Interim Positron Emission Tomography/Computed Tomography Scan After Two ABVD Cycles: Long-Term Results of the GITIL/FIL HD 0607 Trial. *J. Clin. Oncol.* **2018**, *36*, 454–462. [[CrossRef](#)]
33. Gallamini, A.; Patti, C.; Viviani, S.; Rossi, A.; Fiore, F.; Di Raimondo, F.; Cantonetti, M.; Stelitano, C.; Feldman, T.; Gavarotti, P.; et al. Early Chemotherapy Intensification with BEACOPP in Advanced-Stage Hodgkin Lymphoma Patients with a Interim-PET Positive after Two ABVD Courses. *Br. J. Haematol.* **2011**, *152*, 551–560. [[CrossRef](#)]
34. Casasnovas, R.-O.; Bouabdallah, R.; Brice, P.; Lazarovici, J.; Ghesquieres, H.; Stamatoullas, A.; Dupuis, J.; Gac, A.-C.; Gastinne, T.; Joly, B.; et al. PET-Adapted Treatment for Newly Diagnosed Advanced Hodgkin Lymphoma (AHL2011): A Randomised, Multicentre, Non-Inferiority, Phase 3 Study. *Lancet Oncol.* **2019**, *20*, 202–215. [[CrossRef](#)]
35. Casasnovas, O.; Brice, P.; Bouabdallah, R. Randomized Phase III Study Comparing an Early PET Driven Treatment De-Escalation to a Not PET-Monitored Strategy in Patients with Advanced Stages Hodgkin Lymphoma: Interim Analysis of the AHL2011 Lysa Study. *Blood* **2015**, *126*, 577. [[CrossRef](#)]
36. Sehn, L.H. Paramount Prognostic Factors That Guide Therapeutic Strategies in Diffuse Large B-Cell Lymphoma. *Hematology Am. Soc. Hematol. Educ. Program* **2012**, *2012*, 402–409. [[CrossRef](#)]
37. Itti, E.; Meignan, M.; Berriolo-Riedinger, A.; Biggi, A.; Cashen, A.F.; Véra, P.; Tilly, H.; Siegel, B.A.; Gallamini, A.; Casasnovas, R.-O.; et al. An International Confirmatory Study of the Prognostic Value of Early PET/CT in Diffuse Large B-Cell Lymphoma: Comparison between Deauville Criteria and Δ SUVmax. *Eur. J. Nucl. Med. Mol. Imaging* **2013**, *40*, 1312–1320. [[CrossRef](#)]
38. Casasnovas, R.-O.; Meignan, M.; Berriolo-Riedinger, A.; Bardet, S.; Julian, A.; Thieblemont, C.; Vera, P.; Bologna, S.; Brière, J.; Jais, J.-P.; et al. SUVmax Reduction Improves Early Prognosis Value of Interim Positron Emission Tomography Scans in Diffuse Large B-Cell Lymphoma. *Blood* **2011**, *118*, 37–43. [[CrossRef](#)] [[PubMed](#)]
39. Le Gouill, S.; Ghesquière, H.; Oberic, L.; Morschhauser, F.; Tilly, H.; Ribrag, V.; Lamy, T.; Thieblemont, C.; Maisonneuve, H.; Gressin, R.; et al. Obinutuzumab vs Rituximab for Advanced DLBCL: A PET-Guided and Randomized Phase 3 Study by LYSA. *Blood* **2021**, *137*, 2307–2320. [[CrossRef](#)] [[PubMed](#)]
40. Dührsen, U.; Müller, S.P.; Rekowski, J.; Hertenstein, B.; Franzius, C.; Mesters, R.; Weckesser, M.; Kroschinsky, F.; Kotzerke, J.; Franzke, A.; et al. Positron Emission Tomography (PET) Guided Therapy of Aggressive Lymphomas—Interim PET-Based Outcome Prediction and Treatment Changes in Patients with B Cell Lymphomas Participating in the PETAL Trial. *Blood* **2016**, *128*, 1857. [[CrossRef](#)]
41. Richter, J.; Hüttmann, A.; Rekowski, J.; Schmitz, C.; Gärtner, S.; Rosenwald, A.; Hansmann, M.-L.; Hartmann, S.; Möller, P.; Wacker, H.-H.; et al. Molecular Characteristics of Diffuse Large B-Cell Lymphoma in the Positron Emission Tomography-Guided Therapy of Aggressive Non-Hodgkin Lymphomas (PETAL) Trial: Correlation with Interim PET and Outcome. *Blood Cancer J.* **2019**, *9*, 67. [[CrossRef](#)]
42. Eertink, J.J.; Burggraaff, C.N.; Heymans, M.W.; Barrington, S.F.; Mikhaeel, G.; Dührsen, U.; Hüttmann, A.; Ceriani, L.; Zucca, E.; Carr, R.; et al. The Optimal Timing of Interim 18F-FDG PET in Diffuse Large B-Cell Lymphoma: An Individual Patient Data Meta-Analysis By the Petra Consortium. *Blood* **2019**, *134*, 487. [[CrossRef](#)]
43. Roschewski, M.; Dunleavy, K.; Pittaluga, S.; Moorhead, M.; Pepin, F.; Kong, K.; Shovlin, M.; Jaffe, E.S.; Staudt, L.M.; Lai, C.; et al. Circulating Tumour DNA and CT Monitoring in Patients with Untreated Diffuse Large B-Cell Lymphoma: A Correlative Biomarker Study. *Lancet Oncol.* **2015**, *16*, 541–549. [[CrossRef](#)]
44. Dada, R. Diagnosis and Management of Follicular Lymphoma: A Comprehensive Review. *Eur. J. Haematol.* **2019**, *103*, 152–163. [[CrossRef](#)] [[PubMed](#)]

45. Wirth, A.; Foo, M.; Seymour, J.F.; Macmanus, M.P.; Hicks, R.J. Impact of [18f] Fluorodeoxyglucose Positron Emission Tomography on Staging and Management of Early-Stage Follicular Non-Hodgkin Lymphoma. *Int. J. Radiat. Oncol. Biol. Phys.* **2008**, *71*, 213–219. [\[CrossRef\]](#)
46. Andorsky, D.; Coleman, M.; Yacoub, A.; Melear, J.M.; Brooks, H.D.; Fanning, S.R.; Kolibaba, K.S.; Lansigan, F.; Reynolds, C.; Li, J.; et al. Response Rate to Lenalidomide plus Rituximab (R2) as Independent of Number of Prior Lines of Therapy: Interim Analysis of Initial Phase of MAGNIFY Phase IIIb Study of R2 Followed by Maintenance in Relapsed/Refractory Indolent NHL. *J. Clin. Oncol.* **2018**, *36*, 7516. [\[CrossRef\]](#)
47. Trotman, J.; Barrington, S.F.; Belada, D.; Meignan, M.; MacEwan, R.; Owen, C.; Ptáčník, V.; Rosta, A.; Fingerle-Rowson, G.R.; Zhu, J.; et al. Prognostic Value of End-of-Induction PET Response after First-Line Immunochemotherapy for Follicular Lymphoma (GALLIUM): Secondary Analysis of a Randomised, Phase 3 Trial. *Lancet Oncol.* **2018**, *19*, 1530–1542. [\[CrossRef\]](#)
48. Swerdlow, S.H.; Campo, E.; Pileri, S.A.; Harris, N.L.; Stein, H.; Siebert, R.; Advani, R.; Ghielmini, M.; Salles, G.A.; Zelenetz, A.D.; et al. The 2016 Revision of the World Health Organization Classification of Lymphoid Neoplasms. *Blood* **2016**, *127*, 2375–2390. [\[CrossRef\]](#)
49. Bailly, C.; Carlier, T.; Touzeau, C.; Arlicot, N.; Kraeber-Bodéré, F.; Le Gouill, S.; Bodet-Milin, C. Interest of FDG-PET in the Management of Mantle Cell Lymphoma. *Front. Med.* **2019**, *6*, 70. [\[CrossRef\]](#)
50. Bodet-Milin, C.; Bailly, C.; Meignan, M.; Beriollo-Riedinger, A.; Casasnovas, R.-O.; Devillers, A.; Lamy, T.; Santiago-Ribeiro, M.; Gyan, E.; Gallazzini-Crépin, C.; et al. Predictive Power of FDG-PET Parameters at Diagnosis and after Induction in Patients with Mantle Cell Lymphoma, Interim Results from the LyMa-PET Project, Conducted on Behalf of the Lysa Group. *Blood* **2015**, *126*, 335. [\[CrossRef\]](#)
51. Bailly, C.; Carlier, T.; Beriollo-Riedinger, A.; Casasnovas, O.; Gyan, E.; Meignan, M.; Moreau, A.; Burrone, B.; Djaileb, L.; Gressin, R.; et al. Prognostic Value of FDG-PET in Patients with Mantle Cell Lymphoma: Results from the LyMa-PET Project. *Haematologica* **2020**, *105*, e33–e36. [\[CrossRef\]](#)
52. Bodet-Milin, C.; Touzeau, C.; Leux, C.; Sahin, M.; Moreau, A.; Maisonneuve, H.; Morineau, N.; Jardel, H.; Moreau, P.; Gallazini-Crépin, C.; et al. Prognostic Impact of 18F-Fluoro-Deoxyglucose Positron Emission Tomography in Untreated Mantle Cell Lymphoma: A Retrospective Study from the GOELAMS Group. *Eur. J. Nucl. Med. Mol. Imaging* **2010**, *37*, 1633–1642. [\[CrossRef\]](#)
53. Ma, Y.; Wang, Q.; Dong, Q.; Zhan, L.; Zhang, J. How to Differentiate Pseudoprogression from True Progression in Cancer Patients Treated with Immunotherapy. *Am. J. Cancer Res.* **2019**, *9*, 1546–1553. [\[PubMed\]](#)
54. Schuster, S.J.; Bishop, M.R.; Tam, C.S.; Waller, E.K.; Borchmann, P.; McGuirk, J.P.; Jäger, U.; Jaglowski, S.; Andreadis, C.; Westin, J.R.; et al. Tisagenlecleucel in Adult Relapsed or Refractory Diffuse Large B-Cell Lymphoma. *N. Engl. J. Med.* **2019**, *380*, 45–56. [\[CrossRef\]](#) [\[PubMed\]](#)
55. Neelapu, S.S.; Locke, F.L.; Bartlett, N.L.; Lekakis, L.J.; Miklos, D.B.; Jacobson, C.A.; Braunschweig, I.; Oluwole, O.O.; Siddiqi, T.; Lin, Y.; et al. Axicabtagene Ciloleucel CAR T-Cell Therapy in Refractory Large B-Cell Lymphoma. *N. Engl. J. Med.* **2017**, *377*, 2531–2544. [\[CrossRef\]](#) [\[PubMed\]](#)
56. Locke, F.L.; Ghobadi, A.; Jacobson, C.A.; Miklos, D.B.; Lekakis, L.J.; Oluwole, O.O.; Lin, Y.; Braunschweig, I.; Hill, B.T.; Timmerman, J.M.; et al. Long-Term Safety and Activity of Axicabtagene Ciloleucel in Refractory Large B-Cell Lymphoma (ZUMA-1): A Single-Arm, Multicentre, Phase 1-2 Trial. *Lancet Oncol.* **2019**, *20*, 31–42. [\[CrossRef\]](#)
57. Carlier, T.; Bailly, C. State-Of-The-Art and Recent Advances in Quantification for Therapeutic Follow-Up in Oncology Using PET. *Front. Med.* **2015**, *2*, 18. [\[CrossRef\]](#) [\[PubMed\]](#)
58. Basu, S.; Zaidi, H.; Salavati, A.; Hess, S.; Carlsen, P.F.H.; Alavi, A. FDG PET/CT Methodology for Evaluation of Treatment Response in Lymphoma: From “Graded Visual Analysis” and “Semiquantitative SUVmax” to Global Disease Burden Assessment. *Eur. J. Nucl. Med. Mol. Imaging* **2014**, *41*, 2158–2160. [\[CrossRef\]](#)
59. Specht, L. Tumour Burden as the Main Indicator of Prognosis in Hodgkin’s Disease. *Eur. J. Cancer* **1992**, *28A*, 1982–1985. [\[CrossRef\]](#)
60. Gobbi, P.G.; Ghirardelli, M.L.; Solcia, M.; Di Giulio, G.; Merli, F.; Tavecchia, L.; Bertè, R.; Davini, O.; Levis, A.; Brogna, C.; et al. Image-Aided Estimate of Tumor Burden in Hodgkin’s Disease: Evidence of Its Primary Prognostic Importance. *J. Clin. Oncol.* **2001**, *19*, 1388–1394. [\[CrossRef\]](#) [\[PubMed\]](#)
61. Cottreau, A.-S.; Versari, A.; Loft, A.; Casasnovas, O.; Bellei, M.; Ricci, R.; Bardet, S.; Castagnoli, A.; Brice, P.; Raemaekers, J.; et al. Prognostic Value of Baseline Metabolic Tumor Volume in Early-Stage Hodgkin Lymphoma in the Standard Arm of the H10 Trial. *Blood* **2018**, *131*, 1456–1463. [\[CrossRef\]](#)
62. Akhtari, M.; Milgrom, S.A.; Pinnix, C.C.; Reddy, J.P.; Dong, W.; Smith, G.L.; Mawlawi, O.; Abou Yehia, Z.; Gunther, J.; Osborne, E.M.; et al. Reclassifying Patients with Early-Stage Hodgkin Lymphoma Based on Functional Radiographic Markers at Presentation. *Blood* **2018**, *131*, 84–94. [\[CrossRef\]](#) [\[PubMed\]](#)
63. Mettler, J.; Müller, H.; Voltin, C.-A.; Baues, C.; Klaeser, B.; Moccia, A.; Borchmann, P.; Engert, A.; Kuhnert, G.; Drzezga, A.E.; et al. Metabolic Tumour Volume for Response Prediction in Advanced-Stage Hodgkin Lymphoma. *J. Nucl. Med.* **2019**, *60*, 207–211. [\[CrossRef\]](#)
64. Casasnovas, R.-O.; Kanoun, S.; Tal, I.; Cottreau, A.-S.; Edeline, V.; Brice, P.; Bouabdallah, R.; Salles, G.A.; Stamatoullas, A.; Dupuis, J.; et al. Baseline Total Metabolic Volume (TMTV) to Predict the Outcome of Patients with Advanced Hodgkin Lymphoma (HL) Enrolled in the AHL2011 LYSA Trial. *J. Clin. Oncol.* **2016**, *34*, 7509. [\[CrossRef\]](#)

65. Moskowitz, A.J.; Schöder, H.; Gavane, S.; Thoren, K.L.; Fleisher, M.; Yahalom, J.; McCall, S.J.; Cadzin, B.R.; Fox, S.Y.; Gerecitano, J.; et al. Prognostic Significance of Baseline Metabolic Tumor Volume in Relapsed and Refractory Hodgkin Lymphoma. *Blood* **2017**, *130*, 2196–2203. [\[CrossRef\]](#)
66. Sasanelli, M.; Meignan, M.; Haioun, C.; Berriolo-Riedinger, A.; Casasnovas, R.-O.; Biggi, A.; Gallamini, A.; Siegel, B.A.; Cashen, A.F.; Véra, P.; et al. Pretherapy Metabolic Tumour Volume Is an Independent Predictor of Outcome in Patients with Diffuse Large B-Cell Lymphoma. *Eur. J. Nucl. Med. Mol. Imaging* **2014**, *41*, 2017–2022. [\[CrossRef\]](#) [\[PubMed\]](#)
67. Schmitz, C.; Hüttmann, A.; Müller, S.P.; Hanoun, M.; Boellaard, R.; Brinkmann, M.; Jöckel, K.-H.; Dührsen, U.; Rekowski, J. Dynamic Risk Assessment Based on Positron Emission Tomography Scanning in Diffuse Large B-Cell Lymphoma: Post-Hoc Analysis from the PETAL Trial. *Eur. J. Cancer* **2020**, *124*, 25–36. [\[CrossRef\]](#)
68. Toledano, M.N.; Desbordes, P.; Banjar, A.; Gardin, I.; Vera, P.; Ruminy, P.; Jardin, F.; Tilly, H.; Becker, S. Combination of Baseline FDG PET/CT Total Metabolic Tumour Volume and Gene Expression Profile Have a Robust Predictive Value in Patients with Diffuse Large B-Cell Lymphoma. *Eur. J. Nucl. Med. Mol. Imaging* **2018**, *45*, 680–688. [\[CrossRef\]](#)
69. Cottreau, A.-S.; Lanic, H.; Mareschal, S.; Meignan, M.; Vera, P.; Tilly, H.; Jardin, F.; Becker, S. Molecular Profile and FDG-PET/CT Total Metabolic Tumor Volume Improve Risk Classification at Diagnosis for Patients with Diffuse Large B-Cell Lymphoma. *Clin. Cancer Res.* **2016**, *22*, 3801–3809. [\[CrossRef\]](#)
70. Tout, M.; Casasnovas, O.; Meignan, M.; Lamy, T.; Morschhauser, F.; Salles, G.; Gyan, E.; Haioun, C.; Mercier, M.; Feugier, P.; et al. Rituximab Exposure Is Influenced by Baseline Metabolic Tumor Volume and Predicts Outcome of DLBCL Patients: A Lymphoma Study Association Report. *Blood* **2017**, *129*, 2616–2623. [\[CrossRef\]](#) [\[PubMed\]](#)
71. Vercellino, L.; de Jong, D.; di Blasi, R.; Kanoun, S.; Reshef, R.; Schwartz, L.H.; Dercle, L. Current and Future Role of Medical Imaging in Guiding the Management of Patients With Relapsed and Refractory Non-Hodgkin Lymphoma Treated with CAR T-Cell Therapy. *Front. Oncol.* **2021**, *11*, 1918. [\[CrossRef\]](#)
72. Vercellino, L.; Di Blasi, R.; Kanoun, S.; Tessoulin, B.; Rossi, C.; D’Aveni-Piney, M.; Obéric, L.; Bodet-Milin, C.; Bories, P.; Olivier, P.; et al. Predictive Factors of Early Progression after CAR T-Cell Therapy in Relapsed/Refractory Diffuse Large B-Cell Lymphoma. *Blood Adv.* **2020**, *4*, 5607–5615. [\[CrossRef\]](#)
73. Delfau-Larue, M.-H.; van der Gucht, A.; Dupuis, J.; Jais, J.-P.; Nel, I.; Beldi-Ferchiou, A.; Hamdane, S.; Benmaad, I.; Laboure, G.; Verret, B.; et al. Total Metabolic Tumor Volume, Circulating Tumor Cells, Cell-Free DNA: Distinct Prognostic Value in Follicular Lymphoma. *Blood Adv.* **2018**, *2*, 807–816. [\[CrossRef\]](#) [\[PubMed\]](#)
74. Kanoun, S.; Tal, I.; Berriolo-Riedinger, A.; Rossi, C.; Riedinger, J.-M.; Vrigneaud, J.-M.; Legrand, L.; Humbert, O.; Casasnovas, O.; Brunotte, F.; et al. Influence of Software Tool and Methodological Aspects of Total Metabolic Tumor Volume Calculation on Baseline [18F]FDG PET to Predict Survival in Hodgkin Lymphoma. *PLoS ONE* **2015**, *10*, e0140830. [\[CrossRef\]](#)
75. Cottreau, A.-S.; Hapdey, S.; Chartier, L.; Modzelewski, R.; Casasnovas, O.; Itti, E.; Tilly, H.; Vera, P.; Meignan, M.A.; Becker, S. Baseline Total Metabolic Tumor Volume Measured with Fixed or Different Adaptive Thresholding Methods Equally Predicts Outcome in Peripheral T Cell Lymphoma. *J. Nucl. Med.* **2017**, *58*, 276–281. [\[CrossRef\]](#) [\[PubMed\]](#)
76. Ilyas, H.; Mikhaeel, N.G.; Dunn, J.T.; Rahman, F.; Möller, H.; Smith, D.; Barrington, S.F. Defining the Optimal Method for Measuring Baseline Metabolic Tumour Volume in Diffuse Large B Cell Lymphoma. *Eur. J. Nucl. Med. Mol. Imaging* **2018**, *45*, 1142–1154. [\[CrossRef\]](#)
77. Blanc-Durand, P.; Jégou, S.; Kanoun, S.; Berriolo-Riedinger, A.; Bodet-Milin, C.; Kraeber-Bodéré, F.; Carlier, T.; Le Gouill, S.; Casasnovas, R.-O.; Meignan, M.; et al. Fully Automatic Segmentation of Diffuse Large B Cell Lymphoma Lesions on 3D FDG-PET/CT for Total Metabolic Tumour Volume Prediction Using a Convolutional Neural Network. *Eur. J. Nucl. Med. Mol. Imaging* **2021**, *48*, 1362–1370. [\[CrossRef\]](#) [\[PubMed\]](#)
78. Jemaa, S.; Fredrickson, J.; Carano, R.A.D.; Nielsen, T.; de Crespigny, A.; Bengtsson, T. Tumor Segmentation and Feature Extraction from Whole-Body FDG-PET/CT Using Cascaded 2D and 3D Convolutional Neural Networks. *J. Digit. Imaging* **2020**, *33*, 888–894. [\[CrossRef\]](#)
79. Gillies, R.J.; Kinahan, P.E.; Hricak, H. Radiomics: Images Are More than Pictures, They Are Data. *Radiology* **2016**, *278*, 563–577. [\[CrossRef\]](#)
80. Cook, G.J.R.; Siddique, M.; Taylor, B.P.; Yip, C.; Chicklore, S.; Goh, V. Radiomics in PET: Principles and Applications. *Clin. Transl. Imaging* **2014**, *2*, 269–276. [\[CrossRef\]](#)
81. Ben Bouallègue, F.; Tabaa, Y.A.; Kafrouni, M.; Cartron, G.; Vauchot, F.; Mariano-Goulart, D. Association between Textural and Morphological Tumor Indices on Baseline PET-CT and Early Metabolic Response on Interim PET-CT in Bulky Malignant Lymphomas. *Med. Phys.* **2017**, *44*, 4608–4619. [\[CrossRef\]](#) [\[PubMed\]](#)
82. Lue, K.-H.; Wu, Y.-F.; Lin, H.-H.; Hsieh, T.-C.; Liu, S.-H.; Chan, S.-C.; Chen, Y.-H. Prognostic Value of Baseline Radiomic Features of 18F-FDG PET in Patients with Diffuse Large B-Cell Lymphoma. *Diagnostics* **2020**, *11*, 36. [\[CrossRef\]](#) [\[PubMed\]](#)
83. Aide, N.; Fruchart, C.; Nganoa, C.; Gac, A.-C.; Lasnon, C. Baseline 18F-FDG PET Radiomic Features as Predictors of 2-Year Event-Free Survival in Diffuse Large B Cell Lymphomas Treated with Immunochemotherapy. *Eur. Radiol.* **2020**, *30*, 4623–4632. [\[CrossRef\]](#) [\[PubMed\]](#)
84. Carlier, T.; Bailly, C.; Hatt, M.; Kraeber-Bodéré, F.; Visvikis, D.; Gouill, S.L.; Bodet-Milin, C. Quantification of Intratumor Heterogeneity Derived from Baseline FDG PET/CT in Untreated Mantle Cell Lymphoma Patients Enrolled in a Prospective Phase III Trial of the LYSA Group: Preliminary Results. *J. Nucl. Med.* **2015**, *56*, 429.

85. Mayerhoefer, M.E.; Riedl, C.C.; Kumar, A.; Gibbs, P.; Weber, M.; Tal, I.; Schilksy, J.; Schöder, H. Radiomic Features of Glucose Metabolism Enable Prediction of Outcome in Mantle Cell Lymphoma. *Eur. J. Nucl. Med. Mol. Imaging* **2019**, *46*, 2760–2769. [\[CrossRef\]](#)
86. Mayerhoefer, M.E.; Riedl, C.C.; Kumar, A.; Dogan, A.; Gibbs, P.; Weber, M.; Staber, P.B.; Huicochea Castellanos, S.; Schöder, H. [18F]FDG-PET/CT Radiomics for Prediction of Bone Marrow Involvement in Mantle Cell Lymphoma: A Retrospective Study in 97 Patients. *Cancers* **2020**, *12*, 1138. [\[CrossRef\]](#) [\[PubMed\]](#)
87. Cottreau, A.-S.; Nioche, C.; Dirand, A.-S.; Clerc, J.; Morschhauser, F.; Casasnovas, O.; Meignan, M.; Buvat, I. 18F-FDG PET Dissemination Features in Diffuse Large B-Cell Lymphoma Are Predictive of Outcome. *J. Nucl. Med.* **2020**, *61*, 40–45. [\[CrossRef\]](#)
88. Decazes, P.; Becker, S.; Toledano, M.N.; Vera, P.; Desbordes, P.; Jardin, F.; Tilly, H.; Gardin, I. Tumor Fragmentation Estimated by Volume Surface Ratio of Tumors Measured on 18F-FDG PET/CT Is an Independent Prognostic Factor of Diffuse Large B-Cell Lymphoma. *Eur. J. Nucl. Med. Mol. Imaging* **2018**, *45*, 1672–1679. [\[CrossRef\]](#)
89. Zwanenburg, A.; Vallières, M.; Abdalah, M.A.; Aerts, H.J.W.L.; Andrearczyk, V.; Apte, A.; Ashrafinia, S.; Bakas, S.; Beukinga, R.J.; Boellaard, R.; et al. The Image Biomarker Standardization Initiative: Standardized Quantitative Radiomics for High-Throughput Image-Based Phenotyping. *Radiology* **2020**, *295*, 328–338. [\[CrossRef\]](#)
90. Kaste, S.C.; Snyder, S.E.; Metzger, M.L.; Sandlund, J.T.; Howard, S.C.; Krasin, M.; Shulkin, B.L. Comparison of 11C-Methionine and 18F-FDG PET/CT for Staging and Follow-up of Pediatric Lymphoma. *J. Nucl. Med.* **2017**, *58*, 419–424. [\[CrossRef\]](#)
91. Herrmann, K.; Buck, A.K.; Schuster, T.; Junger, A.A.; Wieder, H.; Graf, N.; Ringshausen, I.; Rudelius, M.; Wester, H.-J.; Schwaiger, M.; et al. Predictive Value of Initial 18F-FLT Uptake in Patients with Aggressive Non-Hodgkin Lymphoma Receiving R-CHOP Treatment. *J. Nucl. Med.* **2011**, *52*, 690–696. [\[CrossRef\]](#)
92. Buck, A.K.; Kratochwil, C.; Glatting, G.; Juweid, M.; Bommer, M.; Tepsic, D.; Vogg, A.T.J.; Mattfeldt, T.; Neumaier, B.; Möller, P.; et al. Early Assessment of Therapy Response in Malignant Lymphoma with the Thymidine Analogue [18F]FLT. *Eur. J. Nucl. Med. Mol. Imaging* **2007**, *34*, 1775–1782. [\[CrossRef\]](#)
93. Graf, N.; Herrmann, K.; Numberger, B.; Zwisler, D.; Aichler, M.; Feuchtinger, A.; Schuster, T.; Wester, H.-J.; Senekowitsch-Schmidtke, R.; Peschel, C.; et al. [18F]FLT Is Superior to [18F]FDG for Predicting Early Response to Antiproliferative Treatment in High-Grade Lymphoma in a Dose-Dependent Manner. *Eur. J. Nucl. Med. Mol. Imaging* **2013**, *40*, 34–43. [\[CrossRef\]](#)
94. Minamimoto, R.; Fayad, L.; Advani, R.; Vose, J.; Macapinlac, H.; Meza, J.; Hankins, J.; Mottaghy, F.; Juweid, M.; Quon, A. Diffuse Large B-Cell Lymphoma: Prospective Multicenter Comparison of Early Interim FLT PET/CT versus FDG PET/CT with IHP, EORTC, Deauville, and PERCIST Criteria for Early Therapeutic Monitoring. *Radiology* **2016**, *280*, 220–229. [\[CrossRef\]](#)
95. Lee, H.; Kim, S.; Kim, Y.; Kim, T.S.; Kang, S.H.; Park, W.S.; Yun, T.; Eom, H.-S. Early Determination of Prognosis by Interim 3'-Deoxy-3'-18F-Fluorothymidine PET in Patients with Non-Hodgkin Lymphoma. *J. Nucl. Med.* **2014**, *55*, 216–222. [\[CrossRef\]](#)
96. Mena, E.; Lindenberg, M.L.; Turkbey, B.I.; Shih, J.; Logan, J.; Adler, S.; Wong, K.; Wilson, W.; Choyke, P.L.; Kurdziel, K.A. A Pilot Study of the Value of 18F-Fluoro-Deoxy-Thymidine PET/CT in Predicting Viable Lymphoma in Residual 18F-FDG Avid Masses After Completion of Therapy. *Clin. Nucl. Med.* **2014**, *39*, 874–881. [\[CrossRef\]](#) [\[PubMed\]](#)
97. Minamimoto, R.; Fayad, L.; Vose, J.; Meza, J.; Advani, R.; Hankins, J.; Mottaghy, F.; Macapinlac, H.; Heinzl, A.; Juweid, M.E.; et al. 18F-Fluorothymidine PET Is an Early and Superior Predictor of Progression-Free Survival Following Chemoimmunotherapy of Diffuse Large B Cell Lymphoma: A Multicenter Study. *Eur. J. Nucl. Med. Mol. Imaging* **2021**, *48*, 2883–2893. [\[CrossRef\]](#) [\[PubMed\]](#)
98. Barré, L.; Hovhannisyann, N.; Bodet-Milin, C.; Kraeber-Bodéré, F.; Damaj, G. [18F]-Fludarabine for Hematological Malignancies. *Front. Med.* **2019**, *6*, 77. [\[CrossRef\]](#)
99. Hovhannisyann, N.; Dhilly, M.; Guillouet, S.; Leporrier, M.; Barré, L. Comparative Analysis between [(18)F]Fludarabine-PET and [(18)F]FDG-PET in a Murine Model of Inflammation. *Mol. Pharm.* **2016**, *13*, 2136–2139. [\[CrossRef\]](#)
100. Hovhannisyann, N.; Guillouet, S.; Fillesoye, F.; Dhilly, M.; Patin, D.; Galateau, F.; Leporrier, M.; Barré, L. Evaluation of the Specificity of [(18)F]Fludarabine PET/CT in a Xenograft Model of Follicular Lymphoma: Comparison with [(18)F]FDG and Impact of Rituximab Therapy. *EJNMMI Res.* **2015**, *5*, 23. [\[CrossRef\]](#) [\[PubMed\]](#)
101. Chantepie, S.; Hovhannisyann, N.; Guillouet, S.; Pelage, J.-P.; Ibazizene, M.; Bodet-Milin, C.; Carlier, T.; Gac, A.-C.; Réboursière, E.; Vilque, J.-P.; et al. 18F-Fludarabine PET for Lymphoma Imaging: First-in-Humans Study on DLBCL and CLL Patients. *J. Nucl. Med.* **2018**, *59*, 1380–1385. [\[CrossRef\]](#)
102. Tsuchiya, J.; Yamamoto, M.; Bae, H.; Oshima, T.; Yoneyama, T.; Miura, O.; Tateishi, U. Tumor Identification of Less Aggressive or Indolent Lymphoma With Whole-Body 11C-Acetate PET/CT. *Clin. Nucl. Med.* **2019**, *44*, 276–281. [\[CrossRef\]](#)
103. Goineau, A.; Colombié, M.; Rousseau, C.; Sadot-Lebouvier, S.; Supiot, S. Incidental Detection of a Hodgkin Lymphoma on 18F-Choline PET/CT and Comparison With 18F-FDG in a Patient With Prostate Cancer. *Clin. Nucl. Med.* **2015**, *40*, 670–671. [\[CrossRef\]](#) [\[PubMed\]](#)
104. Garzon, J.G.; Bassa, P.; Moragas, M.; Soler, M.; Riera, E. Incidental Diagnosis of Diffuse Large B-Cell Lymphoma by 11C-Choline PET/CT in a Patient with Biochemical Recurrence of Prostate Cancer. *Clin. Nucl. Med.* **2014**, *39*, 742–743. [\[CrossRef\]](#)
105. De Leiris, N.; Riou, L.; Leenhardt, J.; Vuillez, J.-P.; Djaileb, L. 18F-Choline and 18F-FDG PET/CT in a Patient With Diffuse Large B-Cell Lymphoma and Recurrent Prostate Cancer. *Clin. Nucl. Med.* **2018**, *43*, e471. [\[CrossRef\]](#) [\[PubMed\]](#)
106. Bailly, C.; Bodet-Milin, C.; Guerard, F.; Chouin, N.; Gaschet, J.; Cherel, M.; Davodeau, F.; Faivre-Chauvet, A.; Kraeber-Bodéré, F.; Bourgeois, M. Radioimmunotherapy of Lymphomas. In *Nuclear Medicine Therapy: Side Effects and Complications*; Giovannella, L., Ed.; Springer International Publishing: Cham, Switzerland, 2019; pp. 113–121, ISBN 978-3-030-17494-1.

107. Kahle, X.U.; Montes de Jesus, F.M.; Glaudemans, A.W.J.M.; Lub-de Hooge, M.N.; Jorritsma-Smit, A.; Platteel, W.J.; van Meerten, T.; Diepstra, A.; van den Berg, A.; Kwee, T.C.; et al. Molecular Imaging in Lymphoma beyond 18F-FDG-PET: Understanding the Biology and Its Implications for Diagnostics and Therapy. *Lancet Haematol.* **2020**, *7*, e479–e489. [[CrossRef](#)]
108. Wei, W.; Rosenkrans, Z.T.; Liu, J.; Huang, G.; Luo, Q.-Y.; Cai, W. ImmunoPET: Concept, Design, and Applications. *Chem. Rev.* **2020**, *120*, 3787–3851. [[CrossRef](#)] [[PubMed](#)]
109. Kraeber-Bodere, F.; Bailly, C.; Chérel, M.; Chatal, J.-F. ImmunoPET to Help Stratify Patients for Targeted Therapies and to Improve Drug Development. *Eur. J. Nucl. Med. Mol. Imaging* **2016**, *43*, 2166–2168. [[CrossRef](#)] [[PubMed](#)]
110. Bailly, C.; Chalopin, B.; Gouard, S.; Carlier, T.; Saëc, P.R.-L.; Marionneau-Lambot, S.; Moreau, P.; Touzeau, C.; Kraeber-Bodere, F.; Bodet-Milin, C.; et al. ImmunoPET in Multiple Myeloma-What? So What? Now What? *Cancers* **2020**, *12*, 1467. [[CrossRef](#)]
111. Jauw, Y.W.S.; Zijlstra, J.M.; de Jong, D.; Vugts, D.J.; Zweegman, S.; Hoekstra, O.S.; van Dongen, G.A.M.S.; Huisman, M.C. Performance of 89Zr-Labeled-Rituximab-PET as an Imaging Biomarker to Assess CD20 Targeting: A Pilot Study in Patients with Relapsed/Refractory Diffuse Large B Cell Lymphoma. *PLoS ONE* **2017**, *12*, e0169828. [[CrossRef](#)] [[PubMed](#)]
112. Muylle, K.; Flamen, P.; Vugts, D.J.; Guiot, T.; Ghanem, G.; Meuleman, N.; Bourgeois, P.; Vanderlinden, B.; van Dongen, G.A.M.S.; Everaert, H.; et al. Tumour Targeting and Radiation Dose of Radioimmunotherapy with (90)Y-Rituximab in CD20+ B-Cell Lymphoma as Predicted by (89)Zr-Rituximab Immuno-PET: Impact of Preloading with Unlabelled Rituximab. *Eur. J. Nucl. Med. Mol. Imaging* **2015**, *42*, 1304–1314. [[CrossRef](#)]
113. Iwamoto, F.M.; Schwartz, J.; Pandit-Taskar, N.; Peak, S.; Divgi, C.R.; Zelenetz, A.D.; Humm, J.; Abrey, L.E. Study of Radiolabeled Indium-111 and Yttrium-90 Ibritumomab Tiuxetan in Primary Central Nervous System Lymphoma. *Cancer* **2007**, *110*, 2528–2534. [[CrossRef](#)]
114. Mayerhoefer, M.E.; Raderer, M.; Lamm, W.; Pichler, V.; Pfaff, S.; Weber, M.; Kiesewetter, B.; Hacker, M.; Kazianka, L.; Staber, P.B.; et al. CXCR4 PET Imaging of Mantle Cell Lymphoma Using [68Ga]Pentixafor: Comparison with [18F]FDG-PET. *Theranostics* **2021**, *11*, 567–578. [[CrossRef](#)] [[PubMed](#)]
115. Duell, J.; Krummenast, F.; Schirbel, A.; Klassen, P.; Samnick, S.; Rauert-Wunderlich, H.; Rasche, L.; Buck, A.K.; Wester, H.-J.; Rosenwald, A.; et al. Improved Primary Staging of Marginal Zone Lymphoma by Addition of CXCR4-Directed PET/CT. *J. Nucl. Med.* **2021**, *62*, 1415–1421. [[CrossRef](#)] [[PubMed](#)]
116. Pan, Q.; Luo, Y.; Zhang, Y.; Chang, L.; Li, J.; Cao, X.; Li, J.; Li, F. Preliminary Evidence of Imaging of Chemokine Receptor-4-Targeted PET/CT with [68Ga]Pentixafor in Non-Hodgkin Lymphoma: Comparison to [18F]FDG. *EJNMMI Res.* **2020**, *10*, 89. [[CrossRef](#)] [[PubMed](#)]
117. Luo, Y.; Cao, X.; Pan, Q.; Li, J.; Feng, J.; Li, F. 68Ga-Pentixafor PET/CT for Imaging of Chemokine Receptor 4 Expression in Waldenström Macroglobulinemia/Lymphoplasmacytic Lymphoma: Comparison to 18F-FDG PET/CT. *J. Nucl. Med.* **2019**, *60*, 1724–1729. [[CrossRef](#)] [[PubMed](#)]
118. Maurer, S.; Herhaus, P.; Lippenmeyer, R.; Hänscheid, H.; Kircher, M.; Schirbel, A.; Maurer, H.C.; Buck, A.K.; Wester, H.-J.; Einsele, H.; et al. Side Effects of CXC-Chemokine Receptor 4-Directed Endoradiotherapy with Pentixather Before Hematopoietic Stem Cell Transplantation. *J. Nucl. Med.* **2019**, *60*, 1399–1405. [[CrossRef](#)]
119. Sollini, M.; Kirienko, M.; Gelardi, F.; Fiz, F.; Gozzi, N.; Chiti, A. State-of-the-Art of FAPI-PET Imaging: A Systematic Review and Meta-Analysis. *Eur. J. Nucl. Med. Mol. Imaging* **2021**. [[CrossRef](#)]
120. Jin, X.; Wei, M.; Wang, S.; Wang, G.; Lai, Y.; Shi, Y.; Zhang, Y.; Yang, Z.; Wang, X. Detecting Fibroblast Activation Proteins in Lymphoma Using 68Ga-FAPI PET/CT. *J. Nucl. Med.* **2021**, *62*. [[CrossRef](#)]
121. Bensch, F.; van der Veen, E.L.; Lub-de Hooge, M.N.; Jorritsma-Smit, A.; Boellaard, R.; Kok, I.C.; Oosting, S.F.; Schröder, C.P.; Hiltermann, T.J.N.; van der Wekken, A.J.; et al. 89 Zr-Atezolizumab Imaging as a Non-Invasive Approach to Assess Clinical Response to PD-L1 Blockade in Cancer. *Nat. Med.* **2018**, *24*, 1852–1858. [[CrossRef](#)]
122. Shao, F.; Long, Y.; Ji, H.; Jiang, D.; Lei, P.; Lan, X. Radionuclide-Based Molecular Imaging Allows CAR-T Cellular Visualization and Therapeutic Monitoring. *Theranostics* **2021**, *11*, 6800–6817. [[CrossRef](#)] [[PubMed](#)]
123. Simonetta, F.; Alam, I.S.; Lohmeyer, J.K.; Sahaf, B.; Good, Z.; Chen, W.; Xiao, Z.; Hirai, T.; Scheller, L.; Engels, P.; et al. Molecular Imaging of Chimeric Antigen Receptor T Cells by ICOS-ImmunoPET. *Clin. Cancer Res.* **2021**, *27*, 1058–1068. [[CrossRef](#)]