



**HAL**  
open science

## Glucose Metabolism Quantified by SUVmax on Baseline FDG-PET/CT Predicts Survival in Newly Diagnosed Multiple Myeloma Patients: Combined Harmonized Analysis of Two Prospective Phase III Trials

Anne-Victoire Michaud-Robert, Elena Zamagni, Thomas Carlier, Clément Bailly, Bastien Jamet, Cyrille Touzeau, Philippe Moreau, Françoise Kraeber-Bodere, Cristina Nanni, Caroline Bodet-Milin

### ► To cite this version:

Anne-Victoire Michaud-Robert, Elena Zamagni, Thomas Carlier, Clément Bailly, Bastien Jamet, et al.. Glucose Metabolism Quantified by SUVmax on Baseline FDG-PET/CT Predicts Survival in Newly Diagnosed Multiple Myeloma Patients: Combined Harmonized Analysis of Two Prospective Phase III Trials. *Cancers*, 2020, 12 (9), pp.2532. 10.3390/cancers12092532 . inserm-03497417

**HAL Id: inserm-03497417**

**<https://inserm.hal.science/inserm-03497417>**





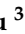
Submitted on 20 Dec 2021

**HAL** is a multi-disciplinary open access archive for the deposit and dissemination of scientific research documents, whether they are published or not. The documents may come from teaching and research institutions in France or abroad, or from public or private research centers.

L'archive ouverte pluridisciplinaire **HAL**, est destinée au dépôt et à la diffusion de documents scientifiques de niveau recherche, publiés ou non, émanant des établissements d'enseignement et de recherche français ou étrangers, des laboratoires publics ou privés.

Communication

# Glucose Metabolism Quantified by SUVmax on Baseline FDG-PET/CT Predicts Survival in Newly Diagnosed Multiple Myeloma Patients: Combined Harmonized Analysis of Two Prospective Phase III Trials

Anne-Victoire Michaud-Robert <sup>1</sup>, Elena Zamagni <sup>2</sup>, Thomas Carlier <sup>1</sup>, Clément Bailly <sup>1</sup>, Bastien Jamet <sup>1</sup>, Cyrille Touzeau <sup>3</sup>, Philippe Moreau <sup>3</sup>, Françoise Kraeber-Bodere <sup>1,4</sup>, Cristina Nanni <sup>5</sup> and Caroline Bodet-Milin <sup>1,\*</sup>

<sup>1</sup> Nuclear Medicine Department, Nantes University Hospital, CRCINA INSERM, CNRS, Angers University, Nantes University, 44093 Nantes, France; annevictoire.michaud@chu-nantes.fr (A.-V.M.-R.); thomas.carlier@chu-nantes.fr (T.C.); clement.bailly@chu-nantes.fr (C.B.); bastien.jamet@chu-nantes.fr (B.J.); francoise.bodere@chu-nantes.fr (F.K.-B.)

<sup>2</sup> Seragnoli Institute of Hematology, Bologna University School of Medicine, 40138 Bologna, Italy; e.zamagni@unibo.it

<sup>3</sup> Department of Hematology, Nantes University Hospital, CRCINA INSERM, CNRS, Angers University, Nantes University, 44093 Nantes, France; cyrille.touzeau@chu-nantes.fr (C.T.); philippe.moreau@chu-nantes.fr (P.M.)

<sup>4</sup> Nuclear Medicine Department, ICO René Gauducheau, 44805 Saint-Herblain, France

<sup>5</sup> Nuclear Medicine, AOU Policlinico S.Orsola-Malpighi, 40138 Bologna, Italy; cristina.nanni@aosp.bo.it

\* Correspondence: caroline.milin@chu-nantes.fr; Tel.: +33-240084136

Received: 29 July 2020; Accepted: 4 September 2020; Published: 6 September 2020



**Simple Summary:** Multiple myeloma (MM) is associated with high morbidity and mortality and variable survival that requires early identification of high-risk patients in order to quickly adapt treatment. FDG-PET/CT is a promising technique for initial staging of symptomatic MM. The aim of our retrospective study was to assess the prognostic value of this technique at baseline in symptomatic MM patients included in two large European prospective studies. After harmonization of data by an ad-hoc approach called M-Combat, we confirmed the prognostic value of FDG-PET/CT in a population of 227 MM patients, by integrating a new prognostic biomarker named “bone SUVmax” (including the maximum intensity of fixation of focal lesions and bone marrow) which is strongly correlated with a poorer prognosis of MM patients. Prognostic patient stratification is currently based on laboratory tests and genomic abnormalities, but FDG-PET/CT is likely to be an important method of defining high-risk patients, and thus, to potentially better adapt future therapeutic management.

**Abstract:** *Background:* Multiple myeloma is a hematological neoplasm characterized by a clonal proliferation of malignant plasma cells in the bone marrow, and is associated with high morbidity and mortality and variable survival. Positron emission tomography combined with computed tomography using 18F-deoxyfluoroglucose (FDG-PET/CT) is a promising technique for initial staging of symptomatic multiple myeloma patients. The objective of this study was to assess the prognostic value of this technique at baseline in symptomatic multiple myeloma patients included in two large European prospective studies (French and Italian). *Methods:* We retrospectively performed a combined harmonized analysis of 227 newly diagnosed transplant eligible multiple myeloma patients from two separate phase III trials. All images were centrally reviewed and analyzed using visual criteria and maximal standardized uptake value. An ad-hoc approach (called modified Combat) was applied to harmonize the data and then remove the “country effect” in order to strengthen the

reliability of the final conclusions. *Results:* Using a multivariate analysis including treatment arm, R-ISS score, presence of extra-medullary disease and bone SUVmax, only bone SUVmax ( $p = 0.016$ ) was an independent prognosis factor with an OS threshold of 7.1. For PFS, treatment arm and presence of extra-medullary disease were both independent prognosis biomarkers ( $p = 0.022$  and  $0.006$  respectively). *Conclusions:* Our results show that bone SUVmax is a simple and reliable biomarker to analyze FDG-PET/CT at baseline that strongly correlates with a poorer prognosis for MM patients.

**Keywords:** multiple myeloma; FDG-PET/CT; prognostic value; SUVmax

---

## 1. Introduction

Positron emission tomography using 18F-deoxyfluoroglucose (FDG-PET/CT) has been included in the 2019 International Myeloma Working Group (IMWG) recommendations as a feasible imaging strategy for the initial workup of newly diagnosed multiple myeloma (MM) patients [1]. FDG-PET/CT detects myeloma related lesions with excellent sensitivity and specificity [2] with the advantage of carrying out both bone and extra-bone exploration in a single examination. MM is associated with variable survival [3], and is due to intra- and inter-tumour heterogeneity. This demonstrates the potential benefits of identifying high-risk patients with poorer prognosis in order to adapt the treatment. Recognition of these high-risk patients is based on the identification of prognostic biomarkers including clinical variables, genomics and imaging results. Currently, four large prospective studies have shown prognostic value for FDG-PET/CT at baseline [2,4–6], but the results of these trials, although consistent, did not report the exact same prognostic biomarkers. Therefore, we sought to identify FDG-PET/CT prognostic biomarkers at diagnosis for a combined harmonized analysis of newly diagnosed transplant eligible (NTDE) MM patients enrolled in imaging sub-studies [2,5] of 2 independent European randomized phase III trials (IFM/DFCI2009 and EMN02/HO95) [7,8], in order to identify high risk patients.

## 2. Results

All 227 patients enrolled in these two studies were considered for this analysis. Fifty-four percent of patients were included in the autograft arm and 41% of patients in the medical treatment arm. Median follow-up was four years [range = 2 months to 6 years] with 121 events in progression free survival (PFS) and 48 in overall survival (OS). At diagnosis, 165 patients (73%) presented focal lesions (FLs) on FDG-PET/CT, and extra-medullary disease (EMD) was observed in 17 patients (7.5%), with no significant difference between the two studies.

### 2.1. Before Harmonization

Before harmonization by M-Combat, bone marrow SUVmax (BM SUVmax) and bone SUVmax were significantly different between the two studies ( $p < 0.001$  and  $p = 0.01$  respectively). The patient characteristics are summarized in Table 1 and the characteristics of FDG-PET/CT parameters at baseline are summarized in Table 2.

### 2.2. After M-Combat Harmonization

After harmonization by M-Combat, univariate analysis revealed age and male gender negatively affect PFS ( $p = 0.035$  and  $p = 0.40$  respectively). Patients without EMD had a longer PFS compared to patients with EMD (median PFS: 48 months vs 20 months;  $p = 0.033$ ) (Figure 1) but no significant difference was observed on OS.

The autograft treatment arm also had improved PFS compared to the medical arm (median PFS: 57 months vs 43 months;  $p = 0.038$ ). Baseline FLs SUVmax and bone SUVmax significantly affected PFS and OS: PFS was shorter for patients with baseline FLs SUVmax higher than 2.9 and bone SUVmax

higher than 3.4 (respectively, median PFS: 44 months vs 61 months,  $p = 0.019$ ; 45 months vs not reached,  $p = 0.012$ ) (Figure 2A,B). For OS, FLs SUVmax and bone SUVmax higher than 6.3 and 7.1 respectively were pejorative ( $p = 0.017$  and  $p = 0.007$  respectively) (Figure 2C,D).

**Table 1.** Patient characteristics at baseline.

| Characteristic ( <i>n</i> Patients)                                |                              | Overall (227)            | France (134)             | Italy (93)               | <i>p</i> -Value |
|--|------------------------------|--------------------------|--------------------------|--------------------------|-----------------|
| Median Age (IQR)   |                              | 59 (53, 62)              | 59 (53, 62)              | 58 (52, 62)              | 0.573           |
| Random Assignment (%)  | - Bortezomib Intensification | 94 (41.4)                | 72 (53.7)                | 22 (23.7)                | < 0.001         |
|  | - Autograft                  | 124 (54.6)               | 61 (45.5)                | 63 (67.7)                |                 |
|  | - Missing Data               | 10 (4.0)                 | 1 (0.8)                  | 8 (8.6)                  |                 |
| ISS <i>n</i> (%)   | - Stage I                    | 102 (45.2)               | 57 (42.5)                | 45 (48.9)                | 0.424           |
|  | - Stage II                   | 89 (39.0)                | 57 (42.5)                | 32 (34.0)                |                 |
|  | - Stage III                  | 36 (15.8)                | 20 (14.9)                | 16 (17.0)                |                 |
| R-ISS <i>n</i> (%)   | - Stage I                    | 54 (23.7)                | 27 (20.2)                | 27 (29.1)                | 0.135           |
|  | - Stage II                   | 124 (54.7)               | 74 (55.2)                | 50 (53.7)                |                 |
|  | - Stage III                  | 24 (10.6)                | 14 (10.4)                | 10 (10.7)                |                 |
|  | - Missing Data               | 25 (11.0)                | 19 (14.2)                | 6 (6.5)                  |                 |
| LDH (U/L) (median (IQR))   |                              | 31.00<br>(166, 337)      | 211.80<br>(159, 327)     | 263.50<br>(179, 365)     | 0.093           |
| High Risk Cytogenetics FISH<br>N (%) (del(17p), t(4;14), t(14;16)) |                              | 6 (14.0)                 | 11 (10.7)                | 15 (18.1)                | 0.202           |
| $\beta_2m$ mg/L (median (IQR))                                     |                              | 3.20<br>(2.40, 4.45)     | 3.25<br>(2.61, 4.48)     | 3.10<br>(2.21, 4.38)     | 0.405           |
| Albumin g/dL (median (IQR))  |                              | 3.86<br>(3.45, 4.26)     | 3.77<br>(3.39, 4.23)     | 3.95<br>(3.50, 4.40)     | 0.034           |
| Platelets (median (IQR))   |                              | 232.00<br>(189.5, 282.5) | 233.00<br>(194.0, 279.0) | 225.50<br>(176.3, 282.8) | 0.400           |

ISS: International Staging System; R-ISS: revised International Staging System, LDH: Lactate dehydrogenase;  $\beta_2m$ :  $\beta_2$ microglobulin.

**Table 2.** Characteristics of FDG-PET/CT parameters at baseline (before harmonization).

| Baseline ( <i>n</i> Patients)      | Overall (227)     | France (134)      | Italy (93)        | <i>p</i> -Value |
|------------------------------------|-------------------|-------------------|-------------------|-----------------|
| Presence of FLs <i>n</i> (%)       | 165 (72.7)        | 99 (73.9)         | 66 (70.9)         | 0.652           |
| Presence of EMD <i>n</i> (%)       | 17 (7.5)          | 13 (9.7)          | 4 (4.3)           | 0.199           |
| BM SUVmax (Median [IQR])           | 3.40 [2.63, 4.50] | 3.70 [2.90, 4.97] | 2.82 [2.29, 3.82] | < 0.001         |
| FL SUVmax (Median [IQR])           | 5.60 [4.0, 8.5]   | 5.70 [4.45, 8.45] | 5.34 [3.59, 8.56] | 0.306           |
| Liver SUVmax (Median [IQR])        | 3.27 [2.79, 3.87] | 3.28 [2.80, 3.90] | 3.26 [2.52, 3.86] | 0.248           |
| Mediastinal SUVmean (Median [IQR]) | 1.56 [1.33, 1.80] | 1.54 [1.34, 1.72] | 1.58 [1.27, 1.86] | 0.768           |
| Bone SUVmax (Median [IQR])         | 5.00 [3.45, 7.89] | 5.20 [3.8, 8.00]  | 4.30 [1.06, 7.44] | 0.01            |

FLs: focal lesions; BM: bone marrow; EMD: extra-medullary disease; SUV: standard uptake value.

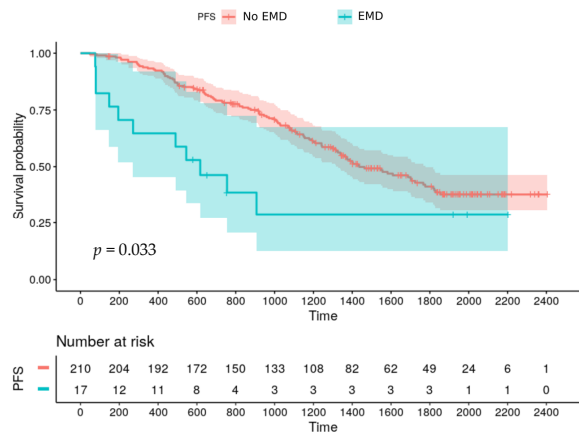


Figure 1. Progression free survival according to EMD at baseline.

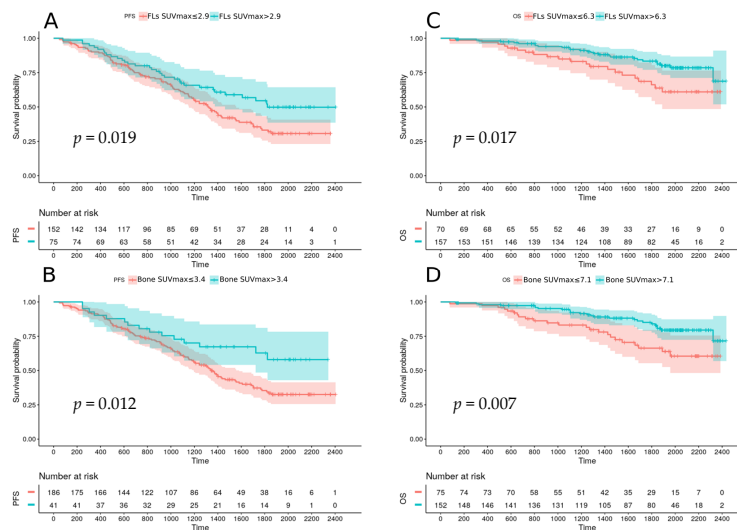


Figure 2. Progression free survival according to FL SUVmax (A) and Bone SUVmax (B) at baseline; Overall survival according to FL SUVmax (C) and bone SUVmax (D) at baseline.

A baseline BM SUVmax higher than 5.9 also negatively affects OS ( $p = 0.013$ ) (Figure 3).

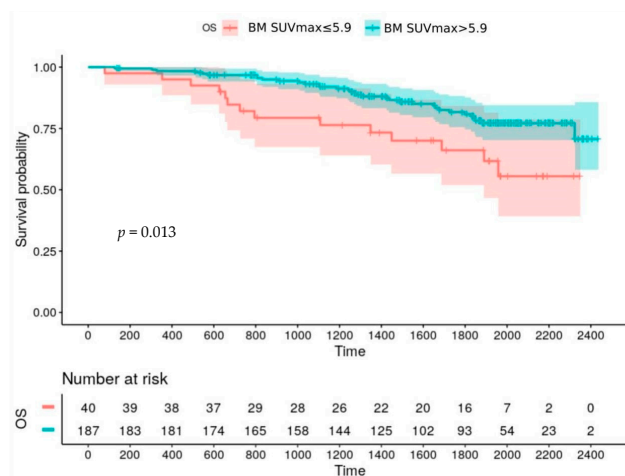


Figure 3. Overall survival according to BM SUVmax at baseline.

Number of FLs and Deauville Score (DS) did not significantly affect survival. In a multivariate analysis including the treatment arm, R-ISS score, presence of EMD and bone SUVmax, absence of EMD and the autograft treatment arm were significantly and independently associated with a longer PFS, whereas bone SUVmax higher than 7.1 was the only prognostic parameter negatively affecting OS (Table 3).

**Table 3.** Univariate and multivariate analysis of baseline variables on PFS and OS.

| Variable                     | HR    | 95% CI      | <i>p</i>     |
|------------------------------|-------|-------------|--------------|
| <b>PFS</b>                   |       |             |              |
| <b>Univariate Analysis</b>   |       |             |              |
| Age                          | 1.562 | 1.031–2.365 | <b>0.035</b> |
| Sex                          | 1.478 | 1.017–2.148 | <b>0.040</b> |
| R-ISS 1 vs 2-3               | 1.217 | 0.813–1.847 | 0.354        |
| R-ISS 1-2 vs 3               | 1.504 | 0.873–2.589 | 0.141        |
| Autograft Arm                | 0.683 | 0.475–0.982 | <b>0.039</b> |
| FL DS 1-2-3 vs 4-5           | 1.098 | 0.756–1.594 | 0.622        |
| BM DS 1-2-3 vs 4-5           | 1.180 | 0.816–1.706 | 0.380        |
| FLs Number < 1*              | 0.868 | 0.503–1.172 | 0.221        |
| Presence of EMD              | 2.324 | 1.246–4.335 | 0.008        |
| FLs SUVmax ≤ 2.9*            | 0.634 | 0.424–0.946 | 0.026        |
| Bone SUVmax ≤ 3.4*           | 0.528 | 0.307–0.907 | 0.021        |
| BM SUVmax ≤ 3.3*             | 0.720 | 0.499–1.041 | 0.081        |
| <b>Multivariate Analysis</b> |       |             |              |
| Presence of EMD              | 2.510 | 1.297–4.869 | <b>0.006</b> |
| Autograft Arm                | 0.640 | 0.442–0.938 | <b>0.022</b> |
| <b>OS</b>                    |       |             |              |
| <b>Univariate Analysis</b>   |       |             |              |
| Age                          | 0.591 | 0.322–1.089 | 0.091        |
| Sex                          | 1.108 | 0.621–1.978 | 0.728        |
| R-ISS 1 vs 2-3               | 1.313 | 0.669–2.575 | 0.428        |
| R-ISS 1-2 vs 3               | 1.836 | 0.857–3.930 | 0.118        |
| Autograft Arm                | 1.051 | 0.727–1.518 | 0.792        |
| FL DS 1-2-3 vs 4-5           | 1.139 | 0.630–2.058 | 0.666        |
| BM DS 1-2-3 vs 4-5           | 1.457 | 0.823–2.577 | 0.196        |
| FLs Number < 1*              | 0.521 | 0.244–1.115 | 0.093        |
| Presence of EMD              | 2.107 | 0.894–4.965 | 0.088        |
| FLs SUVmax ≤ 6.3*            | 0.501 | 0.283–0.887 | 0.018        |
| Bone SUVmax ≤ 7.1*           | 0.462 | 0.262–0.814 | 0.007        |
| BM SUVmax ≤ 5.9*             | 0.450 | 0.241–0.840 | 0.012        |
| <b>Multivariate Analysis</b> |       |             |              |
| Bone SUVmax > 7.1*           | 2.020 | 1.140–3.592 | <b>0.016</b> |

R-ISS: revised International Staging System; EMD: extra-medullary disease; FLs: focal lesions; BM: bone marrow; SUV: standard uptake value; DS: Deauville score; \*optimum threshold defined by Maximally selected Rank Statistics method.

### 3. Discussion

The present combined analysis demonstrated that reliable prognostic biomarkers can be extracted from baseline FDG-PET/CT data from a cohort of two populations after harmonization. To our

knowledge this is the first time this has been performed in the context of multiple myeloma. The presence of EMD and intensity of tumour metabolism represented by bone SUVmax were strong predictors of unfavourable clinical outcomes. Both these factors, along with the treatment arm retained independent prognostic relevance in a multivariate analysis, on PFS for EMD and treatment arm and on OS for bone SUVmax.

While the prognostic impact of EMD has already been demonstrated in large prospective studies [2,5,6] reflecting the dedifferentiation of the disease, FDG absorption had only been demonstrated in 2011 by the Italian group with a FL SUVmax FDG threshold of 4.2 [5]. Our study confirms the prognostic potential of SUVmax by integrating the concept of bone SUVmax with a threshold of 7.1. This threshold value is higher than that presented by Zamagni et al., and is likely due to more modern and effective treatments. This biomarker is an easily measured parameter in standard clinical practice. Its value includes FLs SUVmax, reflecting tumor metabolism and possibly interactions between plasma cells and environmental bone cells, and BM SUVmax also reflecting tumor activity as well as contributions from a reactive environment (anaemia, inflammation). It is thus the combined analysis of all of these biological parameters, which through bone SUVmax seems to have the most robust prognostic value. We did not observe any impact of the DS on patient survival at baseline, contrary to therapy assessment as demonstrated by another combined study [9].

Our study completes and proves once again the essential role of this examination in the diagnosis of MM [10] which is also recommended for therapeutic evaluation [1]. In addition, MM is a pathology with very varied risk profiles and very expensive therapeutic approaches. It will be important in the near future to rapidly define the patient's risk group in order to better orient the therapeutic strategy in this context, PET imaging, unlike biological and genomic tests, allows a sensitive analysis of the disease at the whole body level, with results that can be obtained quickly and at a limited cost. Moreover, FDG-PET/CT is the only modality that can provide a whole body representation of the heterogeneity of the disease [11]. Imaging data from glucose metabolism analyses are probably correlated with certain biological data (e.g., hexokinase and FDG-PET/CT negativity [12]) but it is also thought that they may be complementary, as FDG uptake may reflect tumor activity but also the interactions of the tumor and its environment. We believe that in view of the prognostic impact of the biomarkers identified in our study, which are consistent with the prospective multicenter studies already published, we could consider integrating the PET-FDG biomarkers (bone SUVmax and EMD) into a prognostic score such as the R-ISS score integrating biological, and high-risk cytogenetic abnormalities recognized as negatively affecting patient prognosis [13]. Radiomics data may also, in the coming months, increase this prognostic score [14] and correlation between FDG-PET/CT and genomics is ongoing in the Cassiopet study [6].

The major finding of our study is to participate in the harmonization of the interpretation of baseline FDG-PET/CT data by confirming the values of the EDM lesions and also the LF and BM SUV to determine the SUVmax bone. Nevertheless, this is a retrospective analysis whose results, particularly the definition and threshold of the bone SUVmax, needs to be studied and validated by prospective studies.

## 4. Materials and Methods

### 4.1. Patients

In the present analysis, we included 227 NDTE MM patients enrolled in the imaging sub-studies of trials IFM/DFCI2009 (134 patients) and EMN02/HO95 (93 patients). The French multicentric prospective study IFM/DFCI2009 evaluated the combination of 8 cycles of Lenalidomide, Bortezomib and Dexamethasone (RVD) versus RVD plus autologous stem cell transplantation (ASCT) followed for all patients by Lenalidomide maintenance [8,15]. The imaging sub-study called IMAJEM (IMAgérie JEune Myélome) compared axial MRI and whole body FDG-PET/CT at diagnosis, after 3 cycles of induction therapy and before maintenance. The primary endpoint was the comparison of bone lesion



detection rate at diagnosis by MRI and FDG-PET/CT, and the secondary endpoint was the prognostic impact of both imaging at diagnosis, after 3 cycles of induction therapy and before maintenance therapy [2] (for further details, please refer to [ClinicalTrials.gov](https://clinicaltrials.gov/ct2/show/study/NCT01309334), NCT01309334).

The Italian multicentric prospective study EMN02/HO95 compared ASCT versus proteasome inhibitor based intensification, and consolidation therapy versus no consolidation, followed for all patients by Lenalidomide maintenance [8]. The imaging sub-study evaluated whole-body FDG-PET/CT at diagnosis, after induction therapy and before maintenance, with the aim of determining the prognostic significance of FDG-PET/CT at diagnosis after therapy, and secondly to standardize FDG-PET/CT evaluation and to then define interpretation criteria [5] (for further details, please refer to [ClinicalTrials.gov](https://clinicaltrials.gov/ct2/show/study/NCT01134484), NCT01134484).

All patients gave informed consent. Both studies were approved by local ethics committees (CPP Ouest II-Angers and CPP reference 2010-32, Eudra CT NCT01309334, n°IDRCB: 2010-A01382-37, ANSM autorisation: 18 January 2011) and registered at [ClinicalTrials.gov](https://clinicaltrials.gov/ct2/show/study/NCT01309334) (NCT01309334 and NCT01134484, respectively).

#### 4.2. FDG-PET/CT Evaluation

FDG-PET/CT images were acquired in each center according to the local protocol. All centers involved in the trials used the same generation scanners and followed the rules of good practice defined for PET imaging in oncology [16].

More specifically, all French-center patients fasted for at least 4 hours before FDG injection. Blood glucose levels measured before administering FDG preferably had to be  $<$  or  $=150$  mg/dL, but  $<$  or  $=200$  mg/dL was allowed. No insulin was administered before the FDG injection. Water was given orally during the FDG uptake phase. Whole-body imaging (top of the head to the feet, arms alongside the body) was performed 60 to 80 minutes after the intravenous injection of 3 to 7 MBq/kg FDG. For Italian-center patients, all patients fasted for at least 6 hours before FDG injection. Blood glucose levels measured before administering FDG preferably had to be  $<$  or  $=200$  mg/dL. No insulin was administered before the FDG injection. Extended Total-body imaging (top of the head to femurs, arms alongside the body) was performed  $60 \pm 10$  minutes after the intravenous injection of 3 to 5 MBq/kg FDG. For each French or Italian examination, the low-dose CT was immediately followed by PET acquisition.

The French and Italian FDG-PET/CT baseline images were reread on a dedicated workstation (Imagys, Keosys, France) by nuclear physicians of the Nantes University Hospital (AVMR, CBM, FKB). The following interpretation criteria were reported:

- Number, location and SUVmax of FLs, defined as the presence of areas of focally increased tracer uptake on bone, with or without any underlying lytic lesion on CT, and present on at least two consecutive slices (excluding uptake in relation to osteoarticular benign pathologies).
- Number, location and SUVmax of EMD defined as tracer uptake on tissue not contiguous to bone.
- SUVmax of BM, measured at the lumbar vertebrae (L3-L5) excluding focal lesions with a 3D rectangular ROI

FDG uptake degree of the hottest FL (or BM in cases without FL) was visually quantified with the 5-point DS [17]. Semi-quantitative measures were obtained in physiological areas corresponding to reference organs, liver (SUVmax) and mediastinal blood pool (SUVmax). Furthermore, we reported the highest SUVmax on bone analysis, including FLs and BM uptake, called bone SUVmax.

#### 4.3. Laboratory Investigations

Blood cell count, serum levels of lactate dehydrogenase (LDH), albumin and  $\beta$ 2microglobulin were evaluated before treatment. BM aspirate was evaluated at baseline and FISH analysis of del(17p), t(4;14), t(14;16) was performed.



#### 4.4. Statistical Analysis

All clinico-biological characteristics and FDG-PET/CT parameters of the two populations were merged and compared. Next, harmonization of FDG-PET/CT semi-quantitative parameters based on SUV was performed using the modified Combat method (M-Combat) with the aim of removing the “country effect” [18]. Briefly, the M-Combat approach aims to address the problem of feature variability due to inherent heterogeneity of acquisition set-up directly related to the final value of the feature considered. This problem could be solved within an empirical Bayes framework by finding a transformation to express all features in a common space so as to avoid the “country effect”. The M-Combat method shifts the values to a centered reference rather than an arbitrary space typically related to the mean and variance of the features. This approach recently proved its usefulness in the context of locally advanced cervical cancer and locally advanced laryngeal cancer using biomarkers extracted from FDG-PET [19]. A maximally selected Rank Statistics method was adopted to find the prognostic threshold of FDG-PET/CT characteristics. Progression-free survival (PFS) was defined as the time from randomization to the first documentation of progressive disease or to death from any cause. Survival rates for the groups of patients were calculated using the Kaplan-Meier method and curves were compared using the exact log-rank test. Univariate prognostic analyses for PFS and OS were compared with the Cox proportional-hazards model including the following variables: age, sex, revised International Staging System (R-ISS), treatment arm, presence of EMD, number of FLs, FLs SUVmax, BM SUVmax, FLs DS, BM DS and bone SUVmax, and then, a multivariate analysis was performed.  $p$  values  $< 0.05$  were considered significant.

#### 5. Conclusions

In conclusion, our study showed that bone SUVmax is a simple and reliable way of interpreting baseline FDG-PET/CT and strongly correlated with a poorer prognosis of MM patients. Whilst prognostic patient stratification is currently based on laboratory tests and genomic abnormalities, FDG-PET/CT functional imaging is likely to be an important method of defining high-risk patients, and thus, to potentially better adapt future therapeutic management.

**Author Contributions:** Conceptualization, E.Z., T.C., C.T., P.M., F.K.-B., C.N. and C.B.-M.; Formal analysis, F.K.-B. and C.B.-M.; Funding acquisition, F.K.-B. and C.B.-M.; Investigation, A.-V.M.-R., B.J. and C.T.; Methodology, E.Z., T.C., C.B., P.M., F.K.-B. and C.B.-M.; Resources, C.B. and C.N.; Software, T.C., and C.B.; Writing – original draft, A.-V.M.-R., E.Z., T.C., C.B., B.J., C.T., P.M., F.K.-B., C.N. and C.B.-M. All authors directly participated in the review process and in the writing of this paper and have read and approved the final version submitted. All authors have read and agreed to the published version of the manuscript.

**Funding:** This work has been supported in part by grants from the French National Agency for Research called “Investissements d’Avenir” IRON Labex no ANR-11-LABX-0018-01, and ArronaxPlus Equipex no ANR-11-EQPX-0004, and by grant from INCa-DGOS-Inserm\_12558 (SIRIC ILIAD).

**Conflicts of Interest:** The authors declare no conflict of interest.

#### References

- Hillengass, J.; Usmani, S.; Rajkumar, S.V.; Durie, B.G.M.; Mateos, M.-V.; Lonial, S.; Joao, C.; Anderson, K.C.; García-Sanz, R.; Riva, E.; et al. International myeloma working group consensus recommendations on imaging in monoclonal plasma cell disorders. *Lancet Oncol.* **2019**, *20*, e302–e312. [[CrossRef](#)]
- Moreau, P.; Attal, M.; Caillot, D.; Macro, M.; Karlin, L.; Garderet, L.; Facon, T.; Benboubker, L.; Escoffre-Barbe, M.; Stoppa, A.-M.; et al. Prospective Evaluation of Magnetic Resonance Imaging and [<sup>18</sup>F]Fluorodeoxyglucose Positron Emission Tomography-Computed Tomography at Diagnosis and Before Maintenance Therapy in Symptomatic Patients With Multiple Myeloma Included in the IFM/DFCI 2009 Trial: Results of the IMAJEM Study. *J. Clin. Oncol.* **2017**, *35*, 2911–2918. [[CrossRef](#)] [[PubMed](#)]
- Kumar, S.K.; Rajkumar, V.; Kyle, R.A.; van Duin, M.; Sonneveld, P.; Mateos, M.-V.; Gay, F.; Anderson, K.C. Multiple myeloma. *Nat. Rev. Dis. Primers* **2017**, *3*, 17046. [[CrossRef](#)] [[PubMed](#)]

4. Bartel, T.B.; Haessler, J.; Brown, T.L.Y.; Shaughnessy, J.D.; van Rhee, F.; Anaissie, E.; Alpe, T.; Angtuaco, E.; Walker, R.; Epstein, J.; et al. F18-fluorodeoxyglucose positron emission tomography in the context of other imaging techniques and prognostic factors in multiple myeloma. *Blood* **2009**, *114*, 2068–2076. [[CrossRef](#)] [[PubMed](#)]
5. Zamagni, E.; Patriarca, F.; Nanni, C.; Zannetti, B.; Englaro, E.; Pezzi, A.; Tacchetti, P.; Buttignol, S.; Perrone, G.; Brioli, A.; et al. Prognostic relevance of 18-F FDG PET/CT in newly diagnosed multiple myeloma patients treated with up-front autologous transplantation. *Blood* **2011**, *118*, 5989–5995. [[CrossRef](#)] [[PubMed](#)]
6. Moreau, P.; Zweegman, S.; Perrot, A.; Hulin, C.; Caillot, D.; Facon, T.; Leleu, X.; Belhadj, K.; Karlin, L.; Benboubker, L.; et al. Evaluation of the Prognostic Value of Positron Emission Tomography-Computed Tomography (PET-CT) at Diagnosis and Follow-up in Transplant-Eligible Newly Diagnosed Multiple Myeloma (TE NDMM) Patients Treated in the Phase 3 Cassiopeia Study: Results of the Cassiopet Companion Study. *Blood* **2019**, *134*, 692. [[CrossRef](#)]
7. Attal, M.; Lauwers-Cances, V.; Hulin, C.; Leleu, X.; Caillot, D.; Escoffre, M.; Arnulf, B.; Macro, M.; Belhadj, K.; Garderet, L.; et al. Lenalidomide, Bortezomib, and Dexamethasone with Transplantation for Myeloma. *N. Engl. J. Med.* **2017**, *376*, 1311–1320. [[CrossRef](#)] [[PubMed](#)]
8. Cavo, M.; Hájek, R.; Pantani, L.; Beksac, M.; Oliva, S.; Dozza, L.; Johnsen, H.E.; Petrucci, M.T.; Mellqvist, U.I.; Conticello, C.; et al. Autologous Stem Cell Transplantation Versus Bortezomib-Melphalan-Prednisone for Newly Diagnosed Multiple Myeloma: Second Interim Analysis of the Phase 3 EMN02/HO95 Study. *Blood* **2017**, *130* (Suppl. 1), 397.
9. Zamagni, E.; Nanni, C.; Dozza, L.; Carlier, T.; Tacchetti, P.; Versari, A.; Chauvie, S.; Gallamini, A.; Attal, M.; Gamberi, B.; et al. Standardization of 18F-FDG PET/CT according to Deauville criteria for MRD evaluation in newly diagnosed transplant eligible multiple myeloma patients: Joined analysis of two prospective randomized phase III trials. *Blood* **2018**, *132*, 257. [[CrossRef](#)]
10. Cavo, M.; Terpos, E.; Nanni, C.; Moreau, P.; Lentzsch, S.; Zweegman, S.; Hillengass, J.; Engelhardt, M.; Usmani, S.Z.; Vesole, D.H.; et al. Role of 18 F-FDG PET/CT in the diagnosis and management of multiple myeloma and other plasma cell disorders: A consensus statement by the International Myeloma Working Group. *Lancet Oncol.* **2017**, *18*, e206–e217. [[CrossRef](#)]
11. Rasche, L.; Kortüm, K.M.; Raab, M.S.; Weinhold, N. The Impact of Tumor Heterogeneity on Diagnostics and Novel Therapeutic Strategies in Multiple Myeloma. *Int. J. Mol. Sci.* **2019**, *20*, 1248. [[CrossRef](#)] [[PubMed](#)]
12. Rasche, L.; Angtuaco, E.; McDonald, J.E.; Buros, A.; Stein, C.; Pawlyn, C.; Thanendrarajan, S.; Schinke, C.; Samant, R.; Yaccoby, S.; et al. Low expression of hexokinase-2 is associated with false-negative FDG-positron emission tomography in multiple myeloma. *Blood* **2017**, *130*, 30–34. [[CrossRef](#)] [[PubMed](#)]
13. Scott, E.C.; Hari, P.; Kumar, S.; Fraser, R.; Davila, O.; Shah, N.; Gale, R.P.; Diaz, M.A.; Agrawal, V.; Cornell, R.F.; et al. Staging Systems for Newly Diagnosed Myeloma Patients Undergoing Autologous Hematopoietic Cell Transplantation: The Revised International Staging System Shows the Most Differentiation between Groups. *Biol. Blood Marrow Transplant.* **2018**, *24*, 2443–2449. [[CrossRef](#)] [[PubMed](#)]
14. Morvan, L.; Carlier, T.; Jamet, B.; Bailly, C.; Bodet-Milin, C.; Moreau, P.; Kraeber-Bodéré, F.; Mateus, D. Leveraging RSF and PET images for prognosis of multiple myeloma at diagnosis. *Int. J. CARS* **2020**, *15*, 129–139. [[CrossRef](#)] [[PubMed](#)]
15. Cavo, M.; Gay, F.; Beksac, M.; Pantani, L.; Petrucci, M.T.; Dimopoulos, M.A.; Dozza, L.; van der Holt, B.; Zweegman, S.; Oliva, S.; et al. Autologous haematopoietic stem-cell transplantation versus bortezomib-melphalan-prednisone, with or without bortezomib-lenalidomide-dexamethasone consolidation therapy, and lenalidomide maintenance for newly diagnosed multiple myeloma (EMN02/HO95): A multicentre, randomised, open-label, phase 3 study. *Lancet Haematol.* **2020**, S2352302620300995. [[CrossRef](#)]
16. Boellaard, R. Standards for PET Image Acquisition and Quantitative Data Analysis. *J. Nucl. Med.* **2009**, *50*, 11S–20S. [[CrossRef](#)] [[PubMed](#)]
17. Nanni, C.; Cottreau, A.S.; Lopci, E.; Bodet-Milin, C.; Coronado, M.; Pro, B.; Kim, W.S.; Trotman, J.; Barrington, S.; Duhrsen, U.; et al. Report of the 6th International Workshop on PET in lymphoma. *Leuk. Lymphoma* **2017**, *58*, 2298–2303. [[CrossRef](#)] [[PubMed](#)]
18. Stein, C.K.; Qu, P.; Epstein, J.; Buros, A.; Rosenthal, A.; Crowley, J.; Morgan, G.; Barlogie, B. Removing batch effects from purified plasma cell gene expression microarrays with modified ComBat. *BMC Bioinform.* **2015**, *16*, 63. [[CrossRef](#)] [[PubMed](#)]

19. Da-ano, R.; Masson, I.; Lucia, F.; Doré, M.; Robin, P.; Alfieri, J.; Rousseau, C.; Mervoyer, A.; Reinhold, C.; Castelli, J.; et al. Performance comparison of modified ComBat for harmonization of radiomic features for multicenter studies. *Sci. Rep.* **2020**, *10*, 10248. [[CrossRef](#)] [[PubMed](#)]



© 2020 by the authors. Licensee MDPI, Basel, Switzerland. This article is an open access article distributed under the terms and conditions of the Creative Commons Attribution (CC BY) license (<http://creativecommons.org/licenses/by/4.0/>).