



## Increased risk of brain metastases among patients with melanoma and PROM2 expression in metastatic lymph nodes

Thuy Thi Nguyen, Guillaume Gapihan, Pauline Tetu, Frédéric Pamoukdjian, Morad El Bouchtaoui, Christophe Lebœuf, Jean-paul Feugeas, Justine Paris, Barouyr Baroudjian, Julie Delyon, et al.

### ► To cite this version:

Thuy Thi Nguyen, Guillaume Gapihan, Pauline Tetu, Frédéric Pamoukdjian, Morad El Bouchtaoui, et al.. Increased risk of brain metastases among patients with melanoma and PROM2 expression in metastatic lymph nodes. *Clinical and Translational Medicine*, 2020, 10 (8), pp.e198. 10.1002/ctm2.198 . inserm-03344181

**HAL Id: inserm-03344181**

**<https://inserm.hal.science/inserm-03344181>**

Submitted on 14 Sep 2021

**HAL** is a multi-disciplinary open access archive for the deposit and dissemination of scientific research documents, whether they are published or not. The documents may come from teaching and research institutions in France or abroad, or from public or private research centers.

L'archive ouverte pluridisciplinaire **HAL**, est destinée au dépôt et à la diffusion de documents scientifiques de niveau recherche, publiés ou non, émanant des établissements d'enseignement et de recherche français ou étrangers, des laboratoires publics ou privés.

## LETTER TO EDITOR

# Increased risk of brain metastases among patients with melanoma and PROM2 expression in metastatic lymph nodes

Dear Editor,

Brain metastases occur in the progression of metastatic melanoma in up to 44% of cases.<sup>1</sup> Despite evidence of clinical benefit of combined immunotherapies on melanoma brain metastases,<sup>2</sup> more than 50% of patients will have brain progression, challenging daily practice in oncology. Molecular markers predictive of the risk of melanoma brain metastases remain largely to be identified.<sup>3</sup>

In our study, we performed transcriptomic analyses on laser-microdissected tumor cells from metastatic lymph nodes of patients with melanoma, to identify biomarkers associated with the occurrence of brain metastases over a median follow-up of 48 months. We followed REMARK recommendations for tumor marker prognostic studies.<sup>4</sup> All methods are fully detailed in Material and Method in the Supporting Information.

Among the 51 patients selected for the development cohort (Figure S1), after a median follow-up of 48 months from the time of regional lymph node disease, 19 (37%) developed brain metastases (Group 3), whereas 32 (63%) did not (Group 1 including patients with only regional lymph node metastases and who did not relapse, and Group 2 including patients without brain metastases but with other metastatic localizations) (Table S1 for patients' characteristics and Figure 1A). The median overall survival calculated from first diagnosis of regional lymph node metastasis was significantly shorter among patients with brain metastases than among patients without (39 vs 76 months,  $P < .01$ ) (Figure S2). The median survival from the time of brain metastases was 13.3 months (range: 2-72 months).

Each metastatic lymph node was laser microdissected to select a minimum number of 1500 tumor cells. After RNA extraction, all samples had a RNA integrity number over 7, enabling transcriptomic analyses. On transcriptomic data, multivariate analysis was carried out to compare patients with and without brain metastases. We focused on the

*PROM2* gene, also called prominin-2, with some of the highest *d*-scores at 4.6 and fold change of 3.3 (Table S2), and because *PROM2*, a membrane glycoprotein and a second member of the prominin family, induces membrane protrusions<sup>5</sup> and could thus be implicated in invasive processes. Using reverse transcription-polymerase chain reaction (RT-qPCR), the median expression of *PROM2* mRNA was significantly higher in metastatic lymph nodes from patients who subsequently developed brain metastases ( $\Delta$  cycle threshold [Ct] = 4.9, interquartile range [IQR] = 6.3 vs  $\Delta$ Ct = 2.1, IQR = 3.9;  $P = .005$ ; Figure 1A).

We then analyzed transcriptomic data downloaded from three public databanks (the Cancer Genome Atlas SKCM and GSE22155 and GSE65904 cohorts<sup>6-8</sup>), and found that a high *PROM2* expression in melanoma metastatic lymph nodes was associated with poor survival (Figure S3).

Using immunohistochemistry (IHC) on the 51 metastatic lymph nodes of the development cohort, *PROM2* was only expressed by cancer cells and the mean "PROM2 IHC score" was significantly higher among patients with brain metastases compared to patients without (8.8 vs 4;  $P < .01$ ) (Figure 1B). Overall survival was significantly longer among patients who had a "PROM2 IHC score"  $< 5$  than among patients who reached the cutoff of 5 ( $P < .01$ ; Figure 1C).

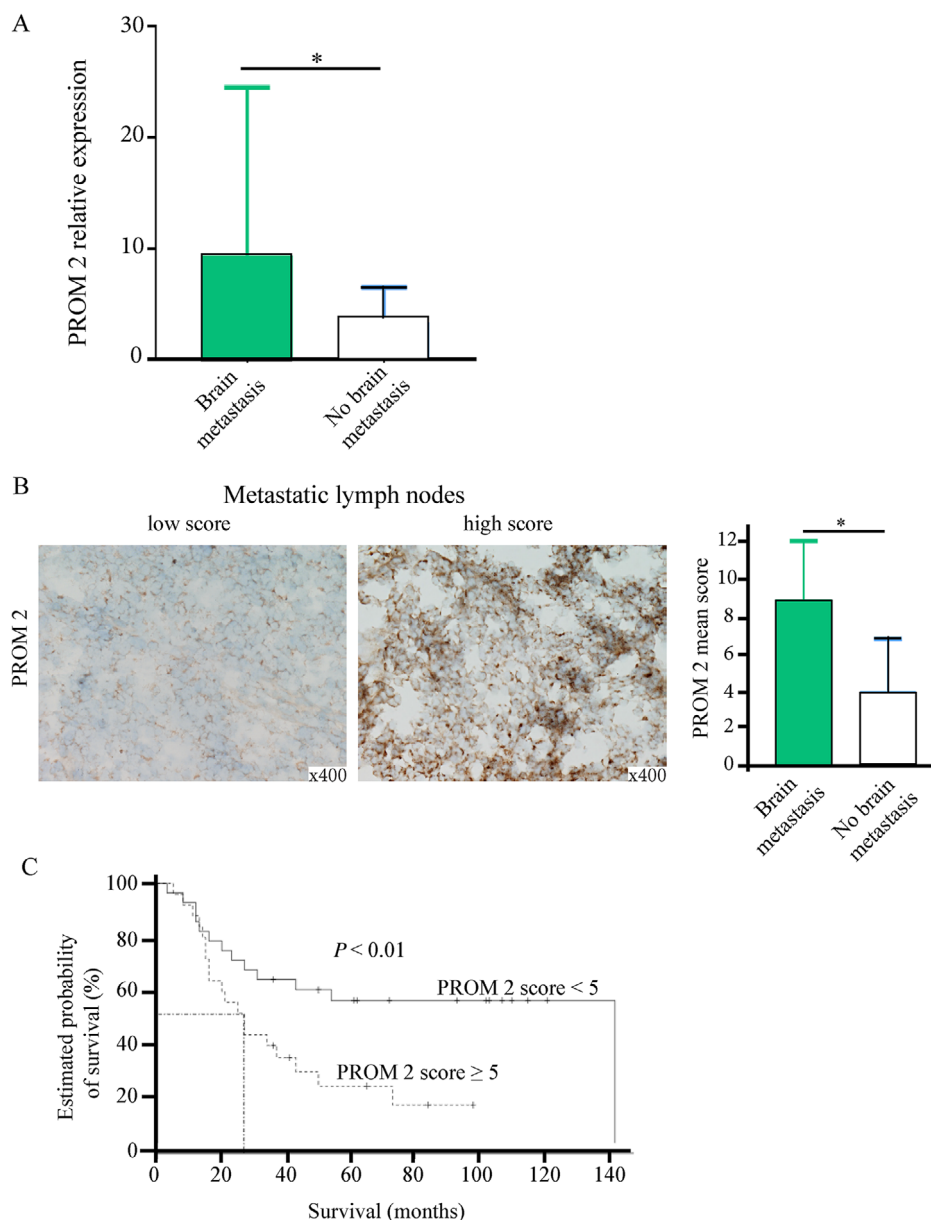
Across the three groups of patients, we observed a gradual, significant increase in *PROM2* mRNA and protein expression from Group 1 to Group 3 (Figure 2B). After a median follow-up of 80 months, overall survival was also much longer for Group 1 with only metastatic regional lymph nodes (Figure 2C).

Using multivariate regression, a "PROM2 IHC score"  $\geq 5$  (odds ratio at 28.2) and the presence of bone metastases were the two variables significantly associated with the risk of brain metastases (Table S3).

Between 2013 and 2014, 50 additional patients with stage III melanoma at diagnosis and a frozen biopsy sample from lymph node metastases were included in

This is an open access article under the terms of the [Creative Commons Attribution](https://creativecommons.org/licenses/by/4.0/) License, which permits use, distribution and reproduction in any medium, provided the original work is properly cited.

© 2020 The Authors. *Clinical and Translational Medicine* published by John Wiley & Sons Australia, Ltd on behalf of Shanghai Institute of Clinical Bioinformatics



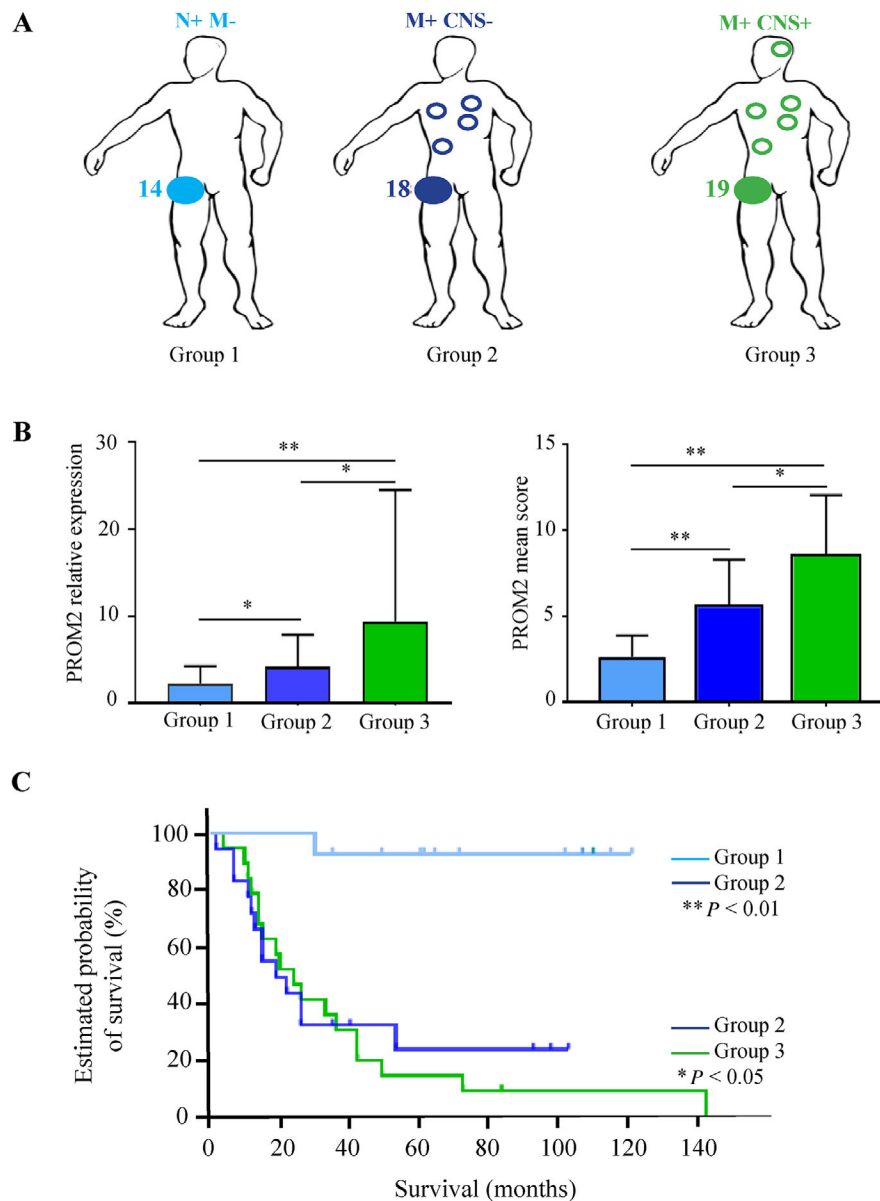
**FIGURE 1** *PROM2* mRNA expression, “*PROM2* IHC score” in metastatic lymph nodes, and survival data in the development cohort. (A), *PROM2* mRNA expression is significantly higher in metastatic lymph nodes from patients with brain metastases than in those from patients without brain metastases ( $P < .05$ ). (B), Using immunostaining on metastatic lymph nodes, the mean “*PROM2* IHC score” is significantly higher among patients with brain metastases than among those without ( $P < .05$ ). (C), Survival according to the “*PROM2* IHC score” level in the development cohort of 51 patients. A “*PROM2* IHC score”  $\geq 5$  is significantly associated with a shorter survival

the validation cohort. After a median follow-up of 48 months from the time of the regional lymph node disease, 19 patients (38%) developed brain metastases, whereas 31 (62%) did not. There was no significant difference between the development and the validation cohorts (Table S4).

In this validation cohort, when *PROM2* mRNA expression was assessed on melanoma cancer cells laser microdissected from metastatic lymph nodes, it was significantly higher among patients who developed brain metastases (median  $\Delta Ct = 5.1$ , IQR = 2.3 vs  $\Delta Ct = 2$ , IQR = 4.6)

( $P < .01$ ). The “*PROM2* IHC score” was also significantly higher in case of brain metastases (7.4 vs 2.1;  $P < .01$ ). Using a cutoff of  $\geq 5$  for the “*PROM2* IHC score” in multivariate regression, the “*PROM2* IHC score” was the only factor associated with the risk of brain metastases.

In the two cohorts, in univariate analysis, a high “*PROM2* IHC score”  $\geq 5$  in metastatic lymph nodes was not associated with the risk of other metastatic sites (lung, liver, and bone), except for lung metastases in the validation cohort (Table S2). In both the development



**FIGURE 2** PROM2 expression and survival data according to subgroups in the development cohort. (A), Group 1 includes patients with only regional lymph node metastases; Group 2 includes patients without brain metastases but with other distant metastatic localizations; Group 3 includes patients with brain metastases. (B), *PROM2* mRNA expression and *PROM2* mean score in the three different groups. *PROM2* mRNA expression and *PROM2* mean score are gradually and significantly different in the three groups. (C), Survival curves according to the three different groups. \* $P < .05$ ; \*\* $P < 0.01$

and validation cohorts, the presence of brain metastases and a “*PROM2* IHC score” of  $\geq 5$  were the only two factors significantly associated with mortality (Table 1; Figure S4).

In this study, among patients with resectable regional lymph node metastases from cutaneous melanoma, we identified *PROM2* as a biomarker significantly associated with the risk of distant metastases, particularly brain metastases, and a decreased survival. This association is strength of our study, with potential translational applications among patients with stage III melanoma. Indeed,

adjuvant treatment using immunotherapy or targeted anti-BRAF and anti-MEK (anti-Mitogen-activated protein kinase) therapies is recommended for patients with stage III disease. No other marker than regional lymph node involvement is currently included in the therapeutic decision. After validation in a larger cohort, the “*PROM2* IHC score” could be used to identify high- and low-risk patients with stage III melanoma more efficiently, and could thus be included in adjuvant clinical trials.

In the management of metastatic melanomas, 20% to 40% of patients remain insensitive to targeted

**TABLE 1** Univariate and multivariate analyses of factors associated with mortality in the development and validation cohorts

Variables	Development cohort (n = 51)				Validation cohort (n = 50)			
	Univariate analysis HR [95% CI]	P-value	Multivariate analysis aHR [95% CI]	P-value	Univariate analysis HR [95% CI]	P-value	Multivariate analysis aHR [95% CI]	P-value
Age (years), mean $\pm$ SD	1.01 [0.98-1.03]	.37			0.98 [0.96-1.01]	.26		
Gender (women)	0.94 [0.46-1.93]	.88			0.82 [0.39-1.75]	.62		
Initial TNM classification		.01		–		.94		
IIIB	1 (reference)		–		1 (reference)			
IIIC	1.22 [0.57-2.60]		–		1.12 [0.53-2.34]			
IIID	7.26 [1.85-28.4]		–		0.86 [0.11-6.58]			
Primary site of melanoma		.49				.20		
Head and neck	1 (reference)				1 (reference)			
Trunk	0.91 [0.26-3.15]				0.42 [0.10-1.64]			
Upper limb	0.48 [0.13-1.75]				0.80 [0.19-3.26]			
Lower limb	0.46 [0.15-1.44]				1.08 [0.30-3.86]			
Unknown	0.49 [0.05-4.45]				–			
Metastatic site								
Brain	2.61 [1.28-5.34]	.008	–	–	5.20 [2.39-11.3]	<.0001	8.08 [2.49-26.2]	.0005
Lung	3.82 [1.78-8.18]	.0005	10.7 [2.86-39.9]	.0004	2.36 [1.13-4.96]	.02	–	–
Bone	2.00 [0.91-4.36]	.08	–	–	2.50 [1.17-5.37]	.01	–	–
Liver	1.85 [0.90-3.79]	.09	–	–	2.07 [0.99-4.31]	.05	–	–
Breslow index (mm), per 1 IQR of more	1.19 [1.04-1.36]	.01	–	–	0.93 [0.82-1.06]	.28		
Ulceration (yes)	2.75 [1.26-6.00]	.01	–	–	1.19 [0.53-2.65]	.67		
BRAF status:								
BRAF V600E (yes)	1.49 [0.73-3.04]	.26			1.49 [0.65-3.42]	.34		
PROM2 mRNA expression, per 1 IQR of more	1.02 [0.99-1.05]	.11	–	–	1.16 [1.03-1.31]	.01	–	–
PROM2 IHC score								
High ( $\geq 5$ )	2.41 [1.16-5.03]	.01	6.48 [1.65-25.5]	.007	3.60 [1.69-7.70]	.0001	3.95 [1.14-13.7]	.02
Interaction terms								
Lung metastases $\times$ PROM2 IHC score $\geq 5$			0.12 [0.02-0.64]	.01				
Brain metastases $\times$ PROM2 IHC score $\geq 5$							0.21 [0.04-1.10]	.06

*Note.* Univariate and multivariate Cox proportional hazard regression models were run with the sample of deceased patients. The assumptions of the model were verified. Hazard ratios (HRs) for continuous variables were expressed per 1 SD or 1 interquartile range (IQR) as appropriate. Variables yielding *P*-values under .2 in the univariate analysis were considered for inclusion in the multivariate analysis. A stepwise selection process of the lowest *P*-values was used for the multivariate analysis, also using interaction terms. aHR: adjusted hazard ratio.

treatments.<sup>9,10</sup> Our study opens new perspectives for the use of PROM2 as a potential therapeutic target for the treatment of metastatic melanoma.

The role of PROM2 in the metastatic process has not been investigated, and further studies are required to elu-

citate this role and to see whether PROM2, like PROM1, provides stemness properties.

Our findings open new perspectives for further studies to validate PROM2 as a useful biomarker in adjuvant clinical trials, and as a potential biotarget

for the treatment of metastatic melanoma in resort situations.

## ACKNOWLEDGMENTS

We would like to thank Ms S. Leyshon and Ms A. Swaine for revising the English language. The study was supported by INSERM, University of Paris, and University Paris 13.

## ETHICS APPROVAL AND CONSENT TO PARTICIPATE

All patients had been informed that a part of their remaining samples could be used for research after diagnosis had been established, and none opposed it. Written informed consent was obtained from each patient. The Clinical Research Board Ethics Committee approved this study (CPP-Ile-de-France#13218).

## DATA AVAILABILITY STATEMENT

All data generated or analyzed during this study are included in this published article and its Supporting Information.

## CONFLICT OF INTEREST

The authors declare no conflict of interest.

## AUTHOR CONTRIBUTIONS

GB, AJ, and MB conceived and designed the study. PT, BB, JD, CL, and SM provided patient clinical data. MB provided patient tumor samples. TTN and MEB carried out the laser microdissections. GG and JPF analyzed the transcriptomic data. TTN and ChL performed the immunostaining. FP did statistical analyses. AJ, GB, and MB provided financial support. AJ and GB provided administrative support. TTN, GB, and MB drafted the manuscript. All authors read and approved the final version of the manuscript.

Thuy Thi Nguyen<sup>1,2,3</sup>

Guillaume Gapihan<sup>1,4</sup>

Pauline Tetu<sup>5</sup>

Frédéric Pamoukdjian<sup>1,6,7</sup>

Morad El Bouchtaoui<sup>1</sup>

Christophe Lebœuf<sup>1</sup>

Jean-Paul Feugeas<sup>8,9</sup>

Justine Paris<sup>1</sup>

Barouyr Baroudjian<sup>5</sup>

Julie Delyon<sup>5,10</sup>

Samia Mourah<sup>4,10,11</sup>

Céleste Lebbé<sup>4,5,10</sup>

Anne Janin<sup>1,4</sup>

Guilhem Bousquet<sup>1,2,7</sup> 

Maxime Battistella<sup>4,10,12</sup>

<sup>1</sup> INSERM U942, Universités de Paris et Sorbonne Paris Nord, Bobigny, France

<sup>2</sup> AP-HP Hôpital Avicenne, Oncologie Médicale, Bobigny, France

<sup>3</sup> Medical Oncology Department A, National Cancer Hospital, Hanoi, Vietnam

<sup>4</sup> Hôpital Saint-Louis, Université de Paris, Paris, France

<sup>5</sup> Dermatologie, AP-HP Hôpital Saint Louis, Paris, France

<sup>6</sup> Médecine Gériatrique, AP-HP Hôpital Avicenne, Bobigny, France

<sup>7</sup> Université Sorbonne Paris Nord, Cardiovascular Markers in Stressed Conditions, MASCOT, Bobigny, France

<sup>8</sup> INSERM U722, Paris, France

<sup>9</sup> Université de Franche-Comté, Besançon, France

<sup>10</sup> INSERM U976, Paris, France

<sup>11</sup> Solid Tumor Genomic Department, AP-HP, Hôpital Saint Louis, Paris, France

<sup>12</sup> Laboratoire de Pathologie, AP-HP Hôpital Saint-Louis, Paris, France

## Correspondence

Maxime Battistella, Hôpital Saint-Louis, Université de Paris, 1 avenue Claude Vellefaux, Paris, F-75010, France.

Email: [maxime.battistella@aphp.fr](mailto:maxime.battistella@aphp.fr)

Guilhem Bousquet, INSERM U942, Universités de Paris et Sorbonne Paris Nord, SMBH, Rue de Chablis, Bobigny, F-93000, France.

Email: [guilhem.bousquet@aphp.fr](mailto:guilhem.bousquet@aphp.fr)

Guillaume Gapihan, Pauline Tetu, and Frédéric Pamoukdjian contributed equally to this work.

Guilhem Bousquet and Maxime Battistella are co-senior authors.

## ORCID

Guilhem Bousquet  <https://orcid.org/0000-0001-5594-6694>

## REFERENCES

1. Cagney DN, Martin AM, Catalano PJ, et al. Incidence and prognosis of patients with brain metastases at diagnosis of systemic malignancy: a population-based study. *Neuro Oncol.* 2017;19(11):1511-1521.
2. Tawbi HA, Forsyth PA, Algazi A, et al. Combined nivolumab and ipilimumab in melanoma metastatic to the brain. *N Engl J Med.* 2018;379(8):722-730.
3. Jilaveanu LB, Parisi F, Barr ML, et al. PLEKHA5 as a biomarker and potential mediator of melanoma brain metastasis. *Clin Cancer Res.* 2015;21(9):2138-2147.
4. McShane LM, Altman DG, Sauerbrei W, et al. REporting recommendations for tumour MARKer prognostic studies (REMARK). *British journal of cancer.* 2005;93(4):387-391.



5. Singh RD, Schroeder AS, Scheffer L, et al. Prominin-2 expression increases protrusions, decreases caveolae and inhibits Cdc42 dependent fluid phase endocytosis. *Biochem Biophys Res Commun*. 2013;434(3):466-472.
6. Cirenajwis H, Ekedahl H, Lauss M, et al. Molecular stratification of metastatic melanoma using gene expression profiling: prediction of survival outcome and benefit from molecular targeted therapy. *Oncotarget*. 2015;6(14):12297-12309.
7. Guan J, Gupta R, Filipp FV. Cancer systems biology of TCGA SKCM: efficient detection of genomic drivers in melanoma. *Sci Rep*. 2015;5:7857.
8. Jonsson G, Busch C, Knappskog S, et al. Gene expression profiling-based identification of molecular subtypes in stage IV melanomas with different clinical outcome. *Clin Cancer Res*. 2010;16(13):3356-3367.
9. Manzano JL, Layos L, Buges C, et al. Resistant mechanisms to BRAF inhibitors in melanoma. *Ann Transl Med*. 2016;4(12):237.
10. Gide TN, Wilmott JS, Scolyer RA, Long GV. Primary and acquired resistance to immune checkpoint inhibitors in metastatic melanoma. *Clin Cancer Res*. 2018;24(6):1260-1270.

## SUPPORTING INFORMATION

Additional supporting information may be found online in the Supporting Information section at the end of the article.