



HAL
open science

Intestine-Liver Cross-talk in Type 2 Diabetes and Non-Alcoholic Fatty Liver Disease

Margaux Nawrot, Simon Peschard, Sophie Lestavel, Bart Staels

► **To cite this version:**

Margaux Nawrot, Simon Peschard, Sophie Lestavel, Bart Staels. Intestine-Liver Cross-talk in Type 2 Diabetes and Non-Alcoholic Fatty Liver Disease. *Metabolism*, 2021, pp.154844. 10.1016/j.metabol.2021.154844 . inserm-03316034

HAL Id: inserm-03316034

<https://inserm.hal.science/inserm-03316034>

Submitted on 6 Aug 2021

HAL is a multi-disciplinary open access archive for the deposit and dissemination of scientific research documents, whether they are published or not. The documents may come from teaching and research institutions in France or abroad, or from public or private research centers.

L'archive ouverte pluridisciplinaire **HAL**, est destinée au dépôt et à la diffusion de documents scientifiques de niveau recherche, publiés ou non, émanant des établissements d'enseignement et de recherche français ou étrangers, des laboratoires publics ou privés.

1

2

3

4

Intestine-Liver Cross-talk in Type 2 Diabetes and Non-Alcoholic

5

Fatty Liver Disease

6

Margaux NAWROT*, Simon PESCHARD*, Sophie LESTAVEL, Bart STAELS

7

8

Univ. Lille, Inserm, CHU Lille, Institut Pasteur de Lille, U1011- EGID, F-59000 Lille, France

9

10

* Co-first authors

11

12

13

14 **Abstract:**

15 Type 2 diabetes (T2D) and Non-Alcoholic Fatty Liver Disease (NAFLD) are pathologies whose
16 prevalence continues to increase worldwide. Both diseases are precipitated by an excessive caloric
17 intake, which promotes insulin resistance and fatty liver. The role of the intestine and its crosstalk with
18 the liver in the development of these metabolic diseases is receiving increasing attention. Alterations in
19 diet-intestinal microbiota interactions lead to the dysregulation of intestinal functions, resulting in
20 altered metabolite and energy substrate production and increased intestinal permeability. Connected
21 through the portal circulation, these changes in intestinal functions impact the liver and other metabolic
22 organs, such as visceral adipose tissue, hence participating in the development of insulin resistance, and
23 worsening T2D and NAFLD. Thus, targeting the intestine may be an efficient therapeutic approach to
24 cure T2D and NAFLD.

25 In this review, we will first introduce the signaling pathways linking T2D and NAFLD. Next, we will
26 address the role of the gut-liver crosstalk in the development of T2D and NAFLD, with a particular focus
27 on the gut microbiota and the molecular pathways behind the increased intestinal permeability and
28 inflammation. Finally, we will summarize the therapeutic strategies which target the gut and its functions
29 and are currently used or under development to treat T2D and NAFLD.

- 30 **Abbreviations:**
- 31 ALT: alanine aminotransferase
- 32 BA: bile acids
- 33 CYP7A1: cholesterol 7 alpha-hydroxylase
- 34 DDP-4: dipeptidyl peptidase-4
- 35 FGF: fibroblast growth factor
- 36 FMT: fecal microbiota transplantation
- 37 FXR: farnesoid X receptor
- 38 GLP-1: glucagon-like peptide-1
- 39 GLP-1R: glucagon-like peptide-1 receptor
- 40 HFD: high fat diet
- 41 HOMA-IR: homeostatic model assessment of insulin resistance
- 42 IgA: immunoglobulin A
- 43 IR: insulin resistance
- 44 JAM-A: junctional adhesion molecule A
- 45 LPS: lipopolysaccharide
- 46 MRI: magnetic resonance imaging
- 47 NAFL /NAFLD: non-alcoholic fatty liver/disease
- 48 NAS: non-alcoholic fatty liver disease activity score
- 49 NASH: non-alcoholic steatohepatitis
- 50 OCA: obeticholic acid
- 51 SCFA: short chain fatty acid
- 52 T2D: type 2 diabetes
- 53 TG: triglycerides
- 54 TGR5: takeda g-protein-coupled receptor 5
- 55 **1. T2D and NAFLD, two closely linked multi-organ pathologies**

56 Diabetes is the most common metabolic disease worldwide. With the western lifestyle pandemic,
57 this multifactorial disease has a worldwide prevalence estimated at 500 million patients [1]. The majority

58 of diabetic patients suffer from Type 2 Diabetes (T2D), which can be classified in different etiological
59 subgroups [2]. T2D is closely related to other metabolic diseases linked to excessive caloric intake and
60 sedentary life style, such as obesity [1]. The liver plays a central role in lipid and glucose metabolism, and
61 hepatic insulin resistance (IR) is a hallmark of both T2D and NAFLD [3,4]. Since >70% of T2D patients have
62 NAFLD [5–7], it has been recently proposed to rename NAFLD to “Metabolic Associated Fatty Liver
63 Disease” to highlight this association [6].

64 NAFLD is a progressive disease initiated by an increase of hepatic lipid content, termed steatosis,
65 the “Non-Alcoholic Fatty Liver” (NAFL) stage. When steatosis becomes chronic, a more complicated
66 histological pattern appears characterized by an increased number of inflammatory *foci* associated with
67 hepatocyte ballooning, the “Non-Alcoholic SteatoHepatitis” (NASH) stage. NAFL and NASH are
68 reversible but, without life-style or medical intervention, liver fibrosis progressively appears developing
69 over decades to cirrhosis and hepatocarcinoma [8,9].

70 The development of diagnostic tools to detect the presence of NASH and its progression to
71 fibrosis is crucial given its increasing prevalence. Today, the gold standard of NASH diagnosis is based on
72 scoring of the histological features of NASH on hepatic biopsies [9]. However, needle biopsies are not
73 without risk and reader variability exists, precluding its application to large numbers of patients. Thus,
74 non-invasive techniques based on biomarkers are being developed to facilitate diagnosis and stage
75 identification [10]. In addition, Magnetic Resonance Imaging (MRI) is used to estimate the hepatic fat
76 content and liver ultrasound elastography to determine the degree of fibrosis [11]. As NAFLD is linked to
77 other metabolic diseases, these new diagnostic tools can be more easily applied to patients suffering
78 from common NAFLD co-morbidities, such as T2D and cardiovascular disease [8].

79 It is still unclear whether T2D and NAFLD develop independently or not, but several studies
80 indicate that the hepatic IR observed in T2D promotes NAFLD progression. Both metabolic diseases imply
81 a suspended dialogue between the different metabolic organs (Figure 1). In the initial phase of glucose
82 intolerance, the chronic hyperinsulinemia leads to decreased hepatic insulin receptor signaling due to
83 reduced receptor synthesis and signal transduction defects, hence resulting in hepatic IR [12]. Moreover,
84 the dialogue between adipose tissue and liver is impaired in obesity and NAFLD, with decreased
85 adiponectin secretion and increased release of free fatty acids by adipose tissue, which worsen hepatic
86 steatosis and fibrosis [13,14]. As a consequence to the loss of insulin sensitivity, hepatic steatosis
87 increases, associated with a dysregulation of liver glycogenesis, gluconeogenesis and lipid synthesis [3].
88 The sustained increase of bioactive lipids, such as ceramides and diacylglycerols, increase IR by altering
89 hepatic insulin receptor signaling. Indeed, diacylglycerols activate protein kinase C isoforms which
90 phosphorylate insulin receptor substrates [15,16]. Moreover, ceramides produced in hepatocytes or
91 released by the intestine [17,18] enhance protein kinase C ζ and phosphatase A2 which inhibit Akt2 [19],
92 hence aggravating hepatic IR. Ceramides and diacylglycerols drive hepatocyte endoplasmic reticulum
93 stress, induce liver inflammation, via pathways including the Nucleotide-binding oligomerization
94 domain-Like Receptor Pyrin domain-containing-3 (NLRP3) inflammasome, and apoptosis [20–22]. These
95 mechanisms promote the hepatic recruitment of immune cells, including macrophages, dendritic cells
96 and CD8⁺ T lymphocytes [23–25], maintaining inflammation and activating hepatic stellate cells resulting
97 in fibrosis [26,27]. Muscle IR is linked to a decrease of muscular glycogen synthesis and an increase of
98 hepatic *de novo* lipogenesis after carbohydrate ingestion [28]. In NAFLD patients, low skeletal muscle
99 mass is associated with liver fibrosis development [29] and an increase of muscle fat content is
100 associated with NASH [30]. Furthermore, sarcopenia independently associates with NAFLD in T2D,

101 suggesting that it may contribute to hepatic impairment in these patients [31]. Moreover, the hepatic
102 damages in diabetic patients with advanced NAFLD may further promote organ dysfunctions, such as
103 chronic kidney disease, cardiovascular complications or neurodegenerative diseases [32–36]. Thus, the
104 dysregulation of cross-talk between liver and other metabolic organs plays a crucial role in the
105 development of these metabolic diseases

106 In this review, we will discuss the role of the disrupted gut-liver crosstalk in T2D and NAFLD,
107 focusing on changes in gut microbiota, gut permeability, the entero-hepatic cycle, the endocrine
108 intestine and the immune system. Finally, we will discuss the intestine and its functions as potential
109 therapeutic targets for the treatment of T2D and NAFLD.

110

111 **2. The role of gut-liver cross-talk disruption in T2D and NAFLD**

112 The intestine is a complex tissue with many functions: it is not only a physical barrier controlling
113 the absorption of nutrients, but also a site of hormone production and an immunological checkpoint.
114 The gut *lumen* also hosts the microbiota, which are essential in the maintenance of a proper energy
115 whole body balance. Through its direct anatomical connection with the liver via the portal vein, the
116 intestine also directly regulates hepatic metabolism. Disruption of the dialogue between the intestine
117 and the liver is likely a major contributor to the development of metabolic diseases such as T2D and
118 NAFLD (Figure 2).

119

120

121 **2.1 Dysregulation of intestinal lipid metabolism promotes dyslipidemia and hepatic steatosis**

122 The main function of the intestine is the absorption of nutrients. For instance, dietary lipids like
123 triglycerides (TG) are hydrolyzed by pancreatic lipase. Released fatty acids are then transported in
124 enterocytes by specific intestinal fatty acid carriers. In the enterocyte, re-assembled TG are packaged
125 into triglyceride-rich lipoproteins called chylomicrons, which are excreted at the basolateral side of
126 enterocytes. Furthermore, the gut also plays a buffering role by storing lipids after high fat meals in
127 enterocytes, which are then secreted at later stages depending on the metabolic conditions [37].

128 T2D patients display a postprandial dyslipidemia due to a combination of elevated chylomicron
129 secretion and decreased intra-vascular clearance. Obese and T2D individuals exhibiting systemic IR
130 display also lower insulin-responses in the intestine. The resulting decreased Akt phosphorylation in
131 enterocytes results in an increased chylomicron production [38,39]. Moreover, obesity and IR lead to
132 intestinal inflammation and oxidative stress, as demonstrated by higher intestinal levels of tumor
133 necrosis factor- α (TNF- α) and cyclooxygenase-2 (COX-2) as well as increased basal and
134 lipopolysaccharide (LPS)-induced interleukin 6 (IL-6) secretion [38].

135 NAFLD patients display also often a dyslipoproteinemia characterized by increased
136 apolipoprotein (Apo) B-containing lipoproteins [40]. An elevated TG absorption, associated with high
137 plasma free fatty acid levels, contributes to an increase of *de novo* hepatic ceramide synthesis, hepatic
138 steatosis and IR in NAFLD patients [41,42].

139 **2.2 Disruption of the intestinal barrier increases low grade inflammation and liver injury**

140 The intestine is highly selective for the absorption of dietary nutrients and metabolites, while
141 acting as a barrier to protect the organism against harmful molecules and bacterial translocation. The
142 luminal mucus layer, which is mainly produced by mucin-producing goblet cells, prevents bacterial
143 adhesion. The intestinal epithelial cells, which transport the luminal metabolites, also react to noxious

144 stimuli by secreting antimicrobial peptides [43]. The epithelial cell monolayer is glued together by inter-
145 cell junctions, notably the tight junctions, which are composed of several proteins, such as zonula
146 occludens 1 (ZO-1), junctional adhesion molecule A (JAM-A) and occludin. These cell junctions establish
147 intestinal integrity and allow specific permeability to control the passage from the *lumen* to the systemic
148 or lymphatic circulation. In the *lamina propria*, the intestinal immune system (see next section for
149 details) produces chemokines, cytokines and immunoglobulins (Ig) in response to danger stimuli [44,45].
150 Finally, beyond the *lamina propria*, the junctions between endothelial cells around the portal vein are
151 increasingly considered as the last layer of the intestinal barrier, called the gut vascular barrier [46].

152 In healthy conditions, most dietary nutrients cross the intestinal barrier through enterocytes,
153 while fluids are mainly passively absorbed in a para-cellular manner [47]. In inflammatory states and
154 metabolic diseases, tight junctions are disrupted leading to the uncontrolled passage of several
155 microbiota-derived molecules, such as LPS, leading to low grade systemic inflammation and
156 endotoxemia. Although there are only limited studies addressing whether intestinal permeability is
157 dysregulated in T2D patients, a leaky gut has been shown to play a role in type 1 diabetes and NAFLD
158 onset [48,49].

159 Miele *et al.* found an association between increased gut permeability and liver steatosis in biopsy-
160 proven NAFLD patients [50]. The urinary excretion of orally administrated Chromium-51 Ethylene
161 Diamine Tetra-acetate, as an estimate of gut permeability, was higher in NAFLD patients and correlated
162 positively with liver steatosis. Immunohistochemically assessed ZO-1 protein was also decreased in
163 duodenal biopsies of the NAFLD patients [50]. JAM-A mRNA and protein expression levels are lower in
164 colon biopsies from ultrasonography diagnosed NAFLD subjects [51]. In obese children with NAFLD,
165 diagnosed using MRI and liver biopsy, the intestinal permeability increase positively correlated with liver

166 steatosis, but not with liver inflammation, ballooning nor NASH [52]. A large meta-analysis of adult and
167 pediatric NAFLD cohorts did not observe a link between increased intestinal permeability and liver
168 inflammation and fibrosis in NAFLD patients [49]. Thus, whereas steatosis and intestinal permeability
169 appear connected, the role of intestinal permeability in inflammation and fibrosis is still under debate.

170 Feeding mice a high fat diet (HFD) increases hepatic steatosis and IR. These mice show body and
171 liver weight increases, fasting hyperglycemia glucose intolerance and hyperinsulinemia [53]. Intestinal
172 JAM-A deficient mice developed severe liver damage, illustrated by elevated plasma transaminase levels,
173 when fed a NAFLD-inducing high fructose-high sucrose-high cholesterol diet. These mice also showed a
174 rise of systemic LPS exposure, associated with exacerbated hepatic stellate cell activation, fibrosis and
175 inflammation due to hepatic immune cell recruitment [51]. Moreover, HFD-feeding rapidly induced gut
176 vascular barrier damage related to decreased Wnt/ β -catenin signaling in endothelial cells [46].

177 Gut barrier integrity thus likely plays an important role in the development of metabolic diseases such
178 as T2D and NAFLD. Although the chronology of events is still unclear, gut microbiota-derived
179 endotoxemia may contribute to the altered gut liver cross-talk.

180

181 **2.3 Gut microbiota dysbiosis increases gut permeability and liver damage**

182 The healthy human intestinal microbiota is composed of a large diversity of microorganisms,
183 mainly anaerobic bacteria [54]. In a healthy state, the microbiota have symbiotic interactions with its
184 host. It participates in nutrient absorption, assists in intestinal barrier function protection to prevent
185 pathogen invasion, improves the function of the intestinal immune system and modulates metabolism
186 [54]. The ability of the gut microbiota to process non-digestible components of the diet results in the
187 production of key metabolites for the host such as short-chain fatty acids (SCFA; butyrate, propionate

188 and acetate) from dietary fibers. These SCFA induce intestinal L-cell release of Glucagon-Like Peptide-1
189 (GLP-1) [55] and butyrate improves the maintenance of the intestinal barrier and the intestinal immune
190 system [56]. Gut bacteria also enzymatically modify host products, such as bile acids (BA), hence
191 impacting on host metabolism [57,58]. Simultaneously, certain gut microbiota can produce harmful
192 components, such as LPS by Gram-negative bacteria, or ethanol and acetaldehyde. In the healthy state,
193 low production of these compounds may contribute to the prevention of intestinal toxicity [59].
194 Quantitative or qualitative changes in the composition of the microbiota, called dysbiosis, may alter this
195 fine-tuned balance. Changes in the host's diet, administration of antibiotics, an opportunistic pathogen
196 or a pathology can disrupt this equilibrium [59].

197 Demonstration of the involvement of dysbiosis in the development of metabolic diseases has
198 prompted studies aimed at understanding these variations and to develop new strategies to treat T2D
199 and/or NAFLD through modulation of the gut microbiota. However, a "healthy or normal" microbiota is
200 under the influence of the environment, genetics and geographical location of its host [60,61]. The gut
201 microbiota of patients is therefore very heterogeneous, both at the phyla and family levels, which
202 explains the complexity of studying the signature of a specific microbiome [62–64].

203 In humans, lower microbial diversity associates positively with dyslipidemia, IR, chronic
204 inflammation, diabetes and obesity [60,61,65]. Furthermore, transplantation of fecal microbiota (FMT)
205 from NAFLD patients into germ-free mice induces hepatic steatosis and inflammation, which are
206 exacerbated by HFD-feeding [66]. The richness of only a few bacteria may vary specifically in metabolic
207 diseases. For instance, *Akkermansia muciniphila* are decreased in obese and T2D patients [67,68] and
208 high levels of *E. coli* correlate positively with hepatic fibrosis [69]. The accompanying increase in systemic
209 LPS correlates with increased hepatic nuclear factor-kappa B (NF-kB) and Toll-Like Receptor 4 (TLR4)

210 positive macrophages in biopsy-proven NASH patients. Circulating bacterial 16S rDNA levels correlate
211 positively with liver damage in obese patients and measurement of its plasma concentrations has been
212 suggested as a marker of liver fibrosis [70]. Although there is a strong assumption that these bacterial
213 components originate from the gut, there is no clear physiological evidence that microbiota exist in blood
214 and 16s rDNA levels may only reflect the increased intestinal permeability. Moreover, their exclusive
215 intestinal origin is not unequivocally proven [70].

216 In rodents with metabolic disorders, a strong link between dysbiosis and increased intestinal
217 permeability has been established. HFD-feeding of mice induces dysbiosis with gut vascular barrier
218 damage and bacterial translocation to the liver. FMT from healthy mice to HFD mice restored intestinal
219 permeability, as evidenced by the FITC-dextran assay, and metabolic disorders improved [46]. The same
220 protection of the gut barrier is observed upon antibiotic treatment of HFD-fed mice [71]. Treatment with
221 the TLR4 inhibitor improves the liver of mice on a NAFLD-inducing diet [72].

222 Other products of Gram-negative bacteria, such as endogenous ethanol, from carbohydrate
223 fermentation, and acetaldehyde, an ethanol metabolite, stimulate the release of pro-inflammatory
224 cytokines from enterocytes and disrupt gut tight junctions [73,74]. In rodent models of NAFLD,
225 endogenous gut-produced ethanol increases hepatic TNF- α expression and inhibits the tricarboxylic acid
226 cycle, resulting in TG accumulation in the liver. Ethanol may increase the activity of cytochrome P450
227 2E1 which produces free radicals through the its oxidation in the liver [59,75,76]. This observation
228 challenged the name “NAFLD”, as alcohol may contribute to the disease without exogenous intake [77].

229 In T2D and NAFLD, other metabolites, such as SCFA, are produced and/or modified by the
230 microbiota and have an impact on disease progression. An overall decrease in butyrate-producing
231 bacteria is found in NAFLD and T2D [78]. In humans, low levels of butyrate are associated with decreased

232 mucus production and a leaky gut [65]. In the colonic *lamina propria* of mice, butyrate has been shown
233 to induce the expression of Foxp3 in CD4⁺ lymphocytes, inducing a T-regulatory profile [79]. *In vitro*
234 butyrate treatment of dendritic cells reduced the expression of pro-inflammatory cytokines in response
235 to LPS [80]. Treatment of HFD-fed mice with butyrate improved villi morphology and gut tight junction
236 protein expression [81], which may be due to the regulation of IgA production by B cells, hence
237 protecting the mucus layer [82]. Butyrate-treated HFD-fed mice have lower levels of hepatic TG and
238 cholesterol associated with decreased expression of fibrosis genes (TGF- β , SMAD2, SMAD7, and α -SMA)
239 and pro-inflammatory (MCP-1, TNF- α , IL-1, IL-2, IL-6, IFN- γ). Thus, decreased systemic butyrate appears
240 to exacerbate NAFLD progression [81]. On the other hand, propionate and acetate increase liver TG
241 storage and hepatic gluconeogenesis in a NAFLD mouse model [59].

242 Another microbial product with effects on cardio-metabolic diseases is the choline-derivative
243 trimethylamine, which increases liver glucose intolerance in mice [83]. In the liver, TMA is oxidized to
244 Trimethylamine N-oxide (TMAO), which has been associated to increased atherosclerosis and
245 cardiovascular risks [83]. Moreover, diabetic patients display increased blood levels of imidazole
246 propionate, a microbiota-derived metabolite of histidine, which induces liver IR [84]. Imidazole
247 propionate alters insulin signaling in the liver through activation of p62 and the mechanistic target of
248 rapamycin complex 1 (mTORC1) resulting in insulin receptor degradation, thus exacerbating IR in T2D
249 patients [85].

250 Overall, the gut microbiota, through modulation of the gut barrier and through the beneficial
251 effects of its products, plays a key role in liver health and dysbiosis may promote the progression of T2D
252 and NAFLD.

253

254 **2.4 Alterations of the entero-hepatic cycle of bile acids in NAFLD**

255 Bile acids (BA) are amphipathic molecules acting as detergents to facilitate lipid absorption in the
256 intestine. BA are produced in the liver from cholesterol, secreted in bile and stored in the gallbladder to
257 be released in the intestine after meal ingestion to participate to lipid absorption. In the intestine, the
258 microbiota generates the secondary BA after deconjugation by bacterial bile salt hydrolase,
259 dehydroxylation and epimerization. The majority of BA (95%) are re-absorbed in the distal intestine and
260 recycled to the liver via the portal vein, the remainder being lost in feces [86].

261 Several studies reported changes in BA composition under different metabolic situations, with
262 results often differing between studies possibly due to differences between the cohorts [87]. In T2D
263 patients, both increased [88] or unchanged [89] plasma BA concentrations have been reported. Higher
264 total plasma BA concentrations have been found in diabetic and non-diabetic NASH patients [87], but
265 the NASH-related increases in plasma BA levels depend on the severity of insulin resistance [90].
266 Differences between conjugated and unconjugated BA found in NAFLD patients may be due, at least in
267 part, to the decreased colonization of bile salt hydrolase expressing bacteria in the intestine [78].
268 Interestingly, plasma BA concentrations also increase with progression of hepatic fibrosis [91].

269 Besides their role in lipid absorption, BA signal via several receptors, amongst which the nuclear
270 receptor Farnesoid X Receptor (FXR) and the Takeda G-protein-coupled Receptor 5 (TGR5) which are
271 expressed in gut and liver. Both FXR and TGR5 regulate, in an opposite manner, GLP-1 secretion by
272 enteroendocrine L cells. TGR5 activation hence improves glucose homeostasis through the release of
273 pancreatic β -cell insulin [86]. Treatment of western diet-fed obese mice with the TGR5 agonist RDX8940
274 improved IR and hepatic steatosis [92]. TGR5 activation in rodents also improved hepatic inflammation
275 by mechanisms involving reduced NF- κ B signaling [93]. Furthermore, TGR5 is expressed in various

276 immune cells, including dendritic cells, Kupffer cells and macrophages, and its activation decreases
277 cytokine production and reduces the low grade inflammation observed in metabolic diseases [86].

278 Under physiological conditions, FXR in enterocytes induces the expression of Fibroblast Growth
279 Factor 19 (FGF19) (and its rodent ortholog FGF15). The peptide secreted in the portal circulation targets
280 FGFR4/ β Klotho receptor on hepatocytes to repress cholesterol 7 α -hydroxylase (CYP7A1) expression
281 and subsequently BA synthesis. Inhibition of BA synthesis reduces hepatic BA toxicity and protects
282 against inflammation [94]. In rodents, FGF15-deficiency increases hepatic steatosis and ER stress, which
283 is reversed by adeno-associated virus-mediated expression of FGF19 in the liver [94]. Moreover, FGF19
284 overexpression reduces plasma alanine aminotransferase (ALT) concentrations and improves NASH and
285 fibrosis in a diet-induced NASH model [95]. These mice also lose weight and display improved glucose
286 tolerance [95]. Direct FXR activation in the liver also decreases BA synthesis due to the induction of the
287 Cyp7a1 inhibitor Small Heterodimer Partner (SHP) [86]. Finally, with the FGF19 analogue aldafermin
288 improves liver histology in NASH patients (see the next chapter).

289 Thus, increasing hepatic and intestinal FXR activation, which represses BA synthesis and hepatic
290 fibrosis, is a promising therapeutic strategy to treat NAFLD, which explains the development of
291 numerous FXR agonists. In addition to its approved use in the treatment of primary biliary cholangitis
292 [96], the FXR agonist obeticholic acid (OCA) is the most advanced compound for fibrosis treatment in
293 NASH [97], whereas tropifexor and nidufexor are other FXR agonists under development [98,99].
294 Although FXR activation may be a promising strategy to treat fibrosis, the role of FXR in T2D or NAFLD
295 progression remains unclear. Prawitt and colleagues have shown that whole-body FXR knock-out mice
296 are protected against HFD-induced obesity [100]. The improved glycemic control observed in these mice
297 is due, at least in part, to a de-repression of GLP-1 secretion by gut L-cells [101]. To decipher the specific

298 role of FXR in the gut, several studies used intestine-specific FXR-deficient mice. Similarly to what is
299 observed in whole-body FXR knock-out mice, intestinal FXR knock-out mice are protected against HFD-
300 induced obesity [102]. These mice show lower HFD-induced hepatic SREBP1C-dependent steatosis due
301 to a decrease in intestinal ceramide synthesis [18,103]. However, whether these mice are also protected
302 from NASH and fibrosis is unknown at present. All these data highlight the complex role of intestinal FXR
303 in NAFLD progression, also illustrated by the fact that whole-body FXR knock-out mice present gut barrier
304 defects when fed a normal chow diet [104] and hepatic steatosis when fed a cholesterol-supplemented
305 diet [105].

306

307 **2.5 Gut immune system disruption increases liver inflammation**

308 The intestinal immune system, which is an integral part of the gut barrier, contributes to shape
309 gut microbiota tolerance and to maintain gut integrity. Found in intestinal crypts, Paneth cells are
310 specialized cells that secrete antimicrobial peptides which modulate the gut microbiome and the local
311 inflammatory response and contribute to the protection of the organism [106]. Moreover, secondary
312 lymphoid organs, the Peyer's patches, are structures localized in the small intestine that contribute to
313 immune system education and tolerance towards food-derived antigens. Specialized M epithelial cells
314 allow antigen transcytosis from the intestinal lumen to the subepithelial dome of Peyer's patches , where
315 they induce, via dendritic cell-mediated antigen presentation, the production of immunoglobulin IgA and
316 IgM by plasmocytes [107,108]. IgAs are dimeric immunoglobulins secreted in the mucus layer to protect
317 the mucosa against pathogens [109]. Lymphoid cells are also found outside of Peyer's patches in the
318 intestinal tissue. Indeed, intra-epithelial lymphocytes localized between the enterocytes are resident
319 cells contributing to the intestinal barrier [110], and regulatory lymphocytes promoting immune

320 tolerance [111] as well as resident self-maintaining macrophages which control gut homeostasis [112]
321 are also found in the *lamina propria*. Finally, other immune cells such as innate lymphoid cells and
322 mucosal-associated invariant T cells are found in the intestine and participate in the mucosal defense
323 against pathogens and in the regulation of tissue inflammation [113,114].

324 The intestinal immune system equilibrium, however, is challenged in obesity and T2D leading to
325 an increased low grade chronic inflammation, dysbiosis and gut permeability [115]. In rodents, HFD
326 feeding modifies the gut immune system through changes in intestinal Pattern Recognition Receptor
327 (PRR) expression, cytokine production and immune cell populations [116]. Moreover, intestinal IgA⁺ B
328 cells are important for the maintenance of glucose tolerance: loss of IgA production results in an
329 increased intestinal pro-inflammatory T cell response in HFD-fed mice [109]. HFD feeding also enhances
330 the pool of F4/80⁺CD11b⁺CD11c⁺ pro-inflammatory macrophages in the colonic *lamina propria* [117].
331 Experiments in macrophage CCR2⁻ and epithelial CCL2-deficient mice showed that colonic macrophage
332 infiltration increases IR independently of body weight gain [117].

333 Obese patients display an increased infiltration of CD68⁺ macrophages in the jejunal epithelium,
334 which correlates with decreased enterocyte insulin signaling [118]. Obese patients also show jejunal
335 mucosa alterations in CD8⁺ T cell subtypes, with a decrease of CD8αα⁺ and an increase of CD8αβ⁺ T cells,
336 resulting in enhanced pro-inflammatory cytokine secretion [118]. In NAFLD patients, diagnosed using
337 ultrasonography and elevated transaminases, an increased immune cell infiltration in the colonic
338 mucosa has been observed [51]. The epithelial density of CD8⁺ T cells also correlated positively with the
339 NAS score, although NAS scores were low excluding the presence of overt NASH [118]. Furthermore,
340 bariatric surgery-induced weight loss and improved metabolism are accompanied by increased fecal IgA
341 levels [109].

342 Whether intestinal immune system dysregulation is a cause or a consequence of gut barrier
343 disruption remains unclear [116]. As gut immune population homeostasis impacts on IR, targeting
344 immune cell populations in the intestinal tissue may be a promising strategy for both T2D and NAFLD.

345

346 **3 Targeting the intestine to treat T2D and NAFLD**

347 As first-line treatment of T2D, weight-reducing strategies, essentially by lifestyle interventions,
348 also efficiently cure NAFLD. A reduction of calorie intake together with increased physical activity
349 improves NAFL, as assessed by MRI liver fat and plasma ALT level analysis [119], as well as later stage
350 biopsy-confirmed NASH and fibrosis [120].

351 Here, we discuss therapeutic approaches targeting the intestine and the gut-liver axis, already
352 used in the clinic or in a late stage clinical development (Table 1). It should be noted that these studies
353 are difficult to compare due to the heterogeneity of patients and diagnostic methods used for NASH
354 patient stratification.

355

356 **3.1 Bariatric surgery**

357 Bariatric surgery is a therapeutic option for obese patients with BMI>40, or >35 when co-
358 morbidities are present, such as T2D or NASH. These surgical interventions, beyond their effect on
359 weight, cure not only T2D [121], but also improve NASH [122]. Indeed, bariatric surgery induces
360 histological reversion of NASH in 85% of patients one year after the intervention [123], an effect which
361 is sustained 5 years after surgery [124]. Similar results were obtained in patients with non-invasively
362 diagnosed for NASH, combining elastography and MRI [11]. In addition, results from a retrospective
363 study revealed that patients are less likely to progress to cirrhosis after bariatric surgery [125].

364 Nevertheless, the type of surgical procedure seems to have an impact, since sleeve gastrectomy is less
365 efficient than Roux-en-Y gastric bypass in reducing the Fatty Liver Index and BARD non-invasive scores
366 of NAFL and fibrosis [126].

367

368 **3.2 FGF19 analogs**

369 As discussed above, several preclinical studies identified beneficial effects of the intestinal FGF19
370 pathway on liver health [94,95]. Therefore, aldafermin (NGM282), a recombinant non-tumorigenic
371 modified FGF19 peptide, was developed. Twelve weeks of treatment with aldafermin reduced liver fat
372 and ALT levels in biopsy-proven NASH patients, without improving IR [127]. Aldafermin treatment
373 reduced the NAS score, and plasma markers of collagen in a dose-escalating phase 2 study, suggesting
374 an improvement of hepatic fibrosis [127,128]. In addition to the reduction of liver fat, 24 week treatment
375 with aldafermin (1 mg) resulted in histological improvement of NASH, i.e. lower steatosis, inflammation,
376 ballooning and fibrosis scores without weight loss or effects on IR [129]. Unfortunately, the ALPINE 2/3
377 study did not meet its primary endpoint, liver fibrosis improvement, and, even though the secondary
378 endpoint, *ie* NASH resolution without fibrosis worsening, was achieved, the clinical development of
379 aldafermin for NASH treatment was stopped [130].

380

381

382 **3.3 FXR agonists**

383 Rather than injecting exogenous recombinant FGF19, endogenous enterocyte FGF19 production
384 is induced by FXR agonists, such as OCA, hence increasing peripheral blood FGF19 levels in T2D and
385 NAFLD patients [131]. This synthetic BA is presently the most clinically advanced FXR-targeting therapy.

386 In NASH patients, long-term OCA treatment improves hepatic histological markers of NASH [97,132].
387 However, glucose control and IR may deteriorate after OCA treatment and plasma LDL-cholesterol levels
388 increased requiring statin treatment [97].

389

390 Other therapies targeting FXR with (semi-)synthetic compounds show interesting results in
391 preclinical models and, at present, in a few clinical studies. INT-767, a modified BA dual FXR/TGR5 agonist
392 with intestinal tropism, reduces histological features of NASH and lowers fibrosis [133], while promoting
393 brown adipogenesis in rodents [134]. Other synthetic FXR agonists are tropifexor, which reduces plasma
394 TG and induces intestinal FGF15 production in rats [99], and nidufexor, which improves hepatic steatosis
395 and NASH in murine models of T2D and NASH murine model. These compounds are now under
396 evaluation in phase 2 clinical trials for NASH treatment [98,135].

397 Finally, the intestine-restricted FXR agonist fexaramine[136] improves insulin sensitivity in mice
398 through a microbiota-dependent increase of plasma GLP-1 concentrations [137], but its potential effect
399 on NASH has not yet been reported.

400

401 **3.4 Targeting the incretin pathway**

402 Complementary to physical exercise and dietary intervention, activation of the GLP-1R either by
403 subcutaneous injection of semi-synthetic recombinant GLP-1R agonists or *per os* treatment with a
404 gliptin, which inhibits the GLP-1-degrading dipeptidyl peptidase-4 (DPP-4) hence increasing endogenous
405 active GLP-1 concentrations, are largely used therapeutic options for the treatment of obesity and T2D.
406 As these metabolic disorders are linked to NAFLD, they are also being tested for this indication in more
407 recent clinical trials.

408 DPP-4 inhibitor monotherapy with sitagliptin did not improve hepatic steatosis in a two-year
409 clinical trial [138]. In combination with metformin, sitagliptin was shown to decrease the hepatic fat
410 fraction as assessed by MRI, without improving fibrosis in T2D NAFLD patients [139]. Therefore, the
411 efficacy of DPP-4 inhibitors, if any, appears limited to steatosis, without effects on more advanced stages
412 of NASH and fibrosis.

413 GLP-1R agonist treatment reduces body weight and improves glucose homeostasis. Therefore,
414 they are interesting candidates for the management of NAFLD. The LEAN trial was the first study to show
415 efficacy of liraglutide to lower NASH in biopsy-proven NASH patients [140]. More recent studies only
416 show results in patients with less advanced hepatic disease [139,141–143]. In monotherapy, liraglutide
417 was found as efficient as lifestyle interventions to improve NAFL, fasting glycemia and IR assessed by the
418 homeostatic model assessment of insulin resistance (HOMA-IR) [141]. In T2D and NAFLD patients, daily
419 liraglutide and weekly dulaglutide treatment also improved liver steatosis [139,142–144]. Moreover,
420 weekly injections of semaglutide for 72 weeks reversed NASH and reduced ALT levels in NASH patients
421 [145]. Although it is unclear at present whether fibrosis improves upon GLP-1R agonist treatment, this
422 compound is of high interest given the fact that it can also be administered orally.

423 Finally, cotadutide, a dual GLP-1R/glucagon receptor agonist, which mimics the effects of
424 oxyntomodulin, an intestinal peptide dual glucagon receptor and GLP-1R activator, reduced body weight
425 and improved liver histology in mice [146].

426 **3.5 Targeting microbiota**

427 As discussed above, the gut microbiota plays an important role in health and metabolic diseases,
428 as demonstrated by the fecal microbiota transplantation (FMT) in germ free mice [66]. Lean donor FMT
429 to patients with metabolic syndrome improved peripheral insulin sensitivity [147]. However, FMT with

430 a healthy donor graft did not improve the hepatic fat fraction nor IR in NAFLD patients [148].
431 Nevertheless, improved intestinal barrier function was observed, as assessed by the lactulose/mannitol
432 urinary test [148]. Except for the treatment of intestinal *C. difficile* infection, application of FMT is limited
433 due to problems of patient acceptance and lack of definition of a healthy graft [149].

434 Since germ-free mice were protected against diet-induced weight gain and hyperglycemia, the
435 use of antibiotics to modulate the microbiota may also be considered. However, antibiotic treatment
436 increased TG levels [150] and penicillin treatment worsened IR and NAFLD in rodent models of HFD-
437 induced obesity [151]. Such approach has only been tested in a limited manner in humans. Rifaximin, a
438 broad spectrum antibiotic, lowered ALT levels, endotoxemia and HOMA-IR in histologically-diagnosed
439 obese NASH patients [152]. Treatment combining metronidazole, an antiprotozoal antibiotic, and the
440 prebiotic inulin decreased transaminase levels in prediabetic patients, an effect not observed with inulin
441 alone [153]. The lack of bacterial species-selective antibiotics and the apparition of antibiotic resistance
442 strongly limit the use of antibiotics for metabolic disorders, which should be restricted to infections.

443 Rather than replacing or destroying the commensal bacterial ecosystem, gut microbiota can be
444 more subtly modulated in different ways. Prebiotics are substrates selectively used by host micro-
445 organisms which confer a health benefit by modulating bacterial metabolite production, eg from non-
446 digestible carbohydrates that are transformed into SCFA [154]. Inulin treatment for 14 weeks decreased
447 HFD-induced hepatic injury in mice, as illustrated by decreased ALT levels, lower numbers of hepatic
448 macrophages, improved hepatic steatosis and improved glucose tolerance in HFD-fed mice [155].
449 Prebiotic treatment of non-diabetic patients lowered transaminases serum levels, serum TG and fasting
450 glycemia [156]. As microbial selection by prebiotics is difficult to control and depends on dietary habits
451 or geographic origin, exogenous intake of non-pathogenic bacteria can be an option. Probiotics are live

452 microorganisms which, when administered in proper doses, confer a health benefit to the host [157]. In
453 HFD-fed mice, *Lactobacillus acidophilus* NS1 supplementation improved hepatic steatosis and reduced
454 fatty acid synthesis [158]. Administration of *Akkermansia muciniphila* modestly improved hepatic
455 histology and reduced hepatic IL-6 expression [68]. Rather than using a single bacteria species, some
456 studies evaluated the efficiency of probiotic mixtures on NAFLD. A mixture of 6 probiotic agents lowered
457 hepatic fat content in 12 weeks-treated NAFL patients, without any effect on IR [159]. VSL#3, another
458 probiotic mixture, reduced hepatic steatosis and increased GLP-1 levels, without reducing ALT levels nor
459 IR in obese NAFLD children [160].

460 Finally, pre- and probiotics can be combined into symbiotics. Similar as in HFD-fed rodents [161],
461 an 8 week treatment with a symbiotic containing 7 probiotics and fructo-oligosaccharides improved
462 hepatic steatosis without decreasing ALT in NAFLD patients [162]. Twenty-eight weeks of treatment with
463 the same symbiotic improved insulin sensitivity, reduced ALT levels and improved fibrosis in Fibroscan
464 diagnosed NAFL patients [163]. However, a recent study reported that combination of *Bifidobacterium*
465 *animalis subspecies lactis* BB-12 and fructooligosaccharides for 10-14 months failed to reduce hepatic
466 fat content in NAFLD patients, whereas the degree of weight loss was the only variable correlated to
467 steatosis [164].

468 Overall, the benefits of microbiota-based approaches on NAFLD and T2D appear modest. The use
469 of these medications seems limited to the reduction of hepatic steatosis and cytolysis, with sometimes
470 benefits on IR. They thus appear indicated in the prevention and treatment of early, less severe forms of
471 NAFLD.

472

473 **4 Conclusion**

474 The metabolic consequences of an altered liver-intestine dialogue reveal its central role in
475 maintenance of energy homeostasis. As T2D and NAFLD impact both organs, targeting the intestine and
476 its functions seems to be a promising therapeutic strategy in the management of obesity, T2D and
477 NAFLD. Further research on the intestine-liver connection is therefore warranted.

478

479 **Disclosure of Interest**

480 The authors report no conflict of interest

481

482 **Financial support**

483 This work was supported by University of Lille (PhD fellowship to Margaux Nawrot), Centre Hospitalier
484 Universitaire de Lille (CHU Lille) (PhD fellowship to Simon Peschard), the European Foundation for the
485 Study of Diabetes (EFSD) under the Boehringer Ingelheim European Research Programme on “Multi-
486 System Challenges in Diabetes” 2020 grant to Sophie Lestavel, the “European Genomic Institute for
487 Diabetes” (E.G.I.D., ANR-10-LABX-0046) grant. Bart Staels holds a “European Research Council advanced
488 Grant” (694717). This work also benefits from State grant managed by the National Research Agency
489 under the program ‘Investissement d’Avenir’ (ANR-16-RHUS-0006_PreciNASH).

490

491

492

493

494 **Author contributions**

495 Margaux Nawrot and Simon Peschard wrote the manuscript and made figures. Sophie Lestavel and Bart
496 Staels revised the article critically for intellectual content and gave final approval of the submitted
497 version.

498 **5 Bibliography**

- 499 1. Evans M, Morgan AR, Patel D, Dhatariya K, Greenwood S, Newland-Jones P, et al. Risk Prediction of the
500 Diabetes Missing Million: Identifying Individuals at High Risk of Diabetes and Related Complications.
501 *Diabetes Ther.* 2021 Jan;12(1):87–105.
- 502 2. Ahlqvist E, Storm P, Käräjämäki A, Martinell M, Dorkhan M, Carlsson A, et al. Novel subgroups of adult-
503 onset diabetes and their association with outcomes: a data-driven cluster analysis of six variables. *Lancet*
504 *Diabetes Endocrinol.* 2018 May;6(5):361–9.
- 505 3. Santolero D, Titchenell PM. Resolving the Paradox of Hepatic Insulin Resistance. *Cell Mol Gastroenterol*
506 *Hepatol.* 2019;7(2):447–56.
- 507 4. Haas JT, Francque S, Staels B. Pathophysiology and Mechanisms of Nonalcoholic Fatty Liver Disease. *Annu*
508 *Rev Physiol.* 2016;78:181–205.
- 509 5. Younossi ZM, Golabi P, de Avila L, Paik JM, Srishord M, Fukui N, et al. The global epidemiology of NAFLD
510 and NASH in patients with type 2 diabetes: A systematic review and meta-analysis. *Journal of Hepatology.*
511 2019 Oct 1;71(4):793–801.
- 512 6. Eslam M, Newsome PN, Sarin SK, Anstee QM, Targher G, Romero-Gomez M, et al. A new definition for
513 metabolic dysfunction-associated fatty liver disease: An international expert consensus statement. *J*
514 *Hepatol.* 2020 Jul;73(1):202–9.
- 515 7. Mantovani A, Petracca G, Beatrice G, Tilg H, Byrne CD, Targher G. Non-alcoholic fatty liver disease and
516 risk of incident diabetes mellitus: an updated meta-analysis of 501 022 adult individuals. *Gut.* 2021 May
517 1;70(5):962–9.
- 518 8. Lonardo A, Nascimbeni F, Mantovani A, Targher G. Hypertension, diabetes, atherosclerosis and NASH:
519 Cause or consequence? *J Hepatol.* 2018 Feb;68(2):335–52.
- 520 9. Sheka AC, Adeyi O, Thompson J, Hameed B, Crawford PA, Ikramuddin S. Nonalcoholic Steatohepatitis: A
521 Review. *JAMA.* 2020 24;323(12):1175–83.
- 522 10. Harrison SA, Ratziu V, Boursier J, Francque S, Bedossa P, Majd Z, et al. A blood-based biomarker panel
523 (NIS4) for non-invasive diagnosis of non-alcoholic steatohepatitis and liver fibrosis: a prospective
524 derivation and global validation study. *The Lancet Gastroenterology & Hepatology.* 2020 Nov
525 1;5(11):970–85.
- 526 11. Allen AM, Shah VH, Therneau TM, Venkatesh SK, Mounajjed T, Larson JJ, et al. Multiparametric Magnetic
527 Resonance Elastography Improves the Detection of NASH Regression Following Bariatric Surgery. *Hepatol*
528 *Commun.* 2020 Feb;4(2):185–92.
- 529 12. Petersen MC, Shulman GI. Mechanisms of Insulin Action and Insulin Resistance. *Physiol Rev.* 2018 Oct
530 1;98(4):2133–223.
- 531 13. Khan RS, Bril F, Cusi K, Newsome PN. Modulation of Insulin Resistance in Nonalcoholic Fatty Liver Disease.
532 *Hepatology.* 2019;70(2):711–24.

- 533 14. Donnelly KL, Smith CI, Schwarzenberg SJ, Jessurun J, Boldt MD, Parks EJ. Sources of fatty acids stored in
534 liver and secreted via lipoproteins in patients with nonalcoholic fatty liver disease. *J Clin Invest.* 2005 May
535 2;115(5):1343–51.
- 536 15. Bezy O, Tran TT, Pihlajamäki J, Suzuki R, Emanuelli B, Winnay J, et al. PKC δ regulates hepatic insulin
537 sensitivity and hepatosteatosis in mice and humans. *J Clin Invest.* 2011 Jun;121(6):2504–17.
- 538 16. Perry RJ, Samuel VT, Petersen KF, Shulman GI. The role of hepatic lipids in hepatic insulin resistance and
539 type 2 diabetes. *Nature.* 2014 Jun 5;510(7503):84–91.
- 540 17. Holland WL, Bikman BT, Wang L-P, Yuguang G, Sargent KM, Bulchand S, et al. Lipid-induced insulin
541 resistance mediated by the proinflammatory receptor TLR4 requires saturated fatty acid-induced
542 ceramide biosynthesis in mice. *J Clin Invest.* 2011 May;121(5):1858–70.
- 543 18. Jiang C, Xie C, Li F, Zhang L, Nichols RG, Krausz KW, et al. Intestinal farnesoid X receptor signaling
544 promotes nonalcoholic fatty liver disease. *J Clin Invest.* 2015 Jan 2;125(1):386–402.
- 545 19. Bikman BT, Summers SA. Ceramides as modulators of cellular and whole-body metabolism. *J Clin Invest.*
546 2011 Nov;121(11):4222–30.
- 547 20. Pihlajamäki J, Kuulasmaa T, Kaminska D, Simonen M, Kärjä V, Grönlund S, et al. Serum interleukin 1
548 receptor antagonist as an independent marker of non-alcoholic steatohepatitis in humans. *J Hepatol.*
549 2012 Mar;56(3):663–70.
- 550 21. Schwabe RF, Luedde T. Apoptosis and necroptosis in the liver: a matter of life and death. *Nat Rev*
551 *Gastroenterol Hepatol.* 2018 Dec;15(12):738–52.
- 552 22. Shulman GI. Ectopic fat in insulin resistance, dyslipidemia, and cardiometabolic disease. *N Engl J Med.*
553 2014 Sep 18;371(12):1131–41.
- 554 23. Haas JT, Vonghia L, Mogilenko DA, Verrijken A, Molendi-Coste O, Fleury S, et al. Transcriptional Network
555 Analysis Implicates Altered Hepatic Immune Function in NASH development and resolution. *Nat Metab.*
556 2019 Jun;1(6):604–14.
- 557 24. Breuer DA, Pacheco MC, Washington MK, Montgomery SA, Hasty AH, Kennedy AJ. CD8+ T cells regulate
558 liver injury in obesity-related nonalcoholic fatty liver disease. *Am J Physiol Gastrointest Liver Physiol.* 2020
559 Feb 1;318(2):G211–24.
- 560 25. Dudek M, Pfister D, Donakonda S, Filpe P, Schneider A, Laschinger M, et al. Auto-aggressive CXCR6+ CD8 T
561 cells cause liver immune pathology in NASH. *Nature.* 2021 Mar 24;
- 562 26. Bhattacharjee J, Kirby M, Softic S, Miles L, Salazar-Gonzalez R-M, Shivakumar P, et al. Hepatic Natural
563 Killer T-cell and CD8+ T-cell Signatures in Mice with Nonalcoholic Steatohepatitis. *Hepatol Commun.* 2017
564 Jun;1(4):299–310.
- 565 27. Arriazu E, Ge X, Leung T-M, Magdaleno F, Lopategi A, Lu Y, et al. Signalling via the osteopontin and high
566 mobility group box-1 axis drives the fibrogenic response to liver injury. *Gut.* 2017 Jun;66(6):1123–37.

- 567 28. Petersen KF, Dufour S, Savage DB, Bilz S, Solomon G, Yonemitsu S, et al. The role of skeletal muscle insulin
568 resistance in the pathogenesis of the metabolic syndrome. *PNAS*. 2007 Jul 31;104(31):12587–94.
- 569 29. Hsieh Y-C, Joo SK, Koo BK, Lin H-C, Kim W. Muscle alterations are independently associated with
570 significant fibrosis in patients with nonalcoholic fatty liver disease. *Liver Int*. 2021 Mar;41(3):494–504.
- 571 30. Nachit M, Kwanten WJ, Thissen J-P, Beeck BOD, Gaal LV, Vonghia L, et al. Muscle fat content is strongly
572 associated with NASH: a longitudinal study in patients with morbid obesity. *Journal of Hepatology*
573 [Internet]. 2021 Apr 14 [cited 2021 Apr 16];0(0). Available from: [https://www.journal-of-](https://www.journal-of-hepatology.eu/article/S0168-8278(21)00234-8/abstract)
574 [hepatology.eu/article/S0168-8278\(21\)00234-8/abstract](https://www.journal-of-hepatology.eu/article/S0168-8278(21)00234-8/abstract)
- 575 31. Seo DH, Lee Y-H, Park SW, Choi YJ, Huh BW, Lee E, et al. Sarcopenia is associated with non-alcoholic fatty
576 liver disease in men with type 2 diabetes. *Diabetes Metab*. 2020 Oct;46(5):362–9.
- 577 32. Targher G, Day CP, Bonora E. Risk of cardiovascular disease in patients with nonalcoholic fatty liver
578 disease. *N Engl J Med*. 2010 Sep 30;363(14):1341–50.
- 579 33. Targher G, Lonardo A, Byrne CD. Nonalcoholic fatty liver disease and chronic vascular complications of
580 diabetes mellitus. *Nat Rev Endocrinol*. 2018 Feb;14(2):99–114.
- 581 34. Mantovani A, Turino T, Lando MG, Gjini K, Byrne CD, Zusi C, et al. Screening for non-alcoholic fatty liver
582 disease using liver stiffness measurement and its association with chronic kidney disease and
583 cardiovascular complications in patients with type 2 diabetes. *Diabetes Metab*. 2020 Sep;46(4):296–303.
- 584 35. Weinstein G, Zelber-Sagi S, Preis SR, Beiser AS, DeCarli C, Speliotes EK, et al. Association of Nonalcoholic
585 Fatty Liver Disease With Lower Brain Volume in Healthy Middle-aged Adults in the Framingham Study.
586 *JAMA Neurol*. 2018 Jan;75(1):97–104.
- 587 36. Weinstein G, Davis-Plourde K, Himali JJ, Zelber-Sagi S, Beiser AS, Seshadri S. Non-alcoholic fatty liver
588 disease, liver fibrosis score and cognitive function in middle-aged adults: The Framingham Study. *Liver*
589 *Int*. 2019 Sep;39(9):1713–21.
- 590 37. Stahel P, Xiao C, Nahmias A, Lewis GF. Role of the Gut in Diabetic Dyslipidemia. *Front Endocrinol*
591 (Lausanne). 2020;11:116.
- 592 38. Veilleux A, Grenier E, Marceau P, Carpentier AC, Richard D, Levy E. Intestinal lipid handling: evidence and
593 implication of insulin signaling abnormalities in human obese subjects. *Arterioscler Thromb Vasc Biol*.
594 2014 Mar;34(3):644–53.
- 595 39. Nogueira J-P, Maraninchi M, Béliard S, Padilla N, Duvillard L, Mancini J, et al. Absence of acute inhibitory
596 effect of insulin on chylomicron production in type 2 diabetes. *Arterioscler Thromb Vasc Biol*. 2012
597 Apr;32(4):1039–44.
- 598 40. Nass KJ, van den Berg EH, Faber KN, Schreuder TCMA, Blokzijl H, Dullaart RPF. High prevalence of
599 apolipoprotein B dyslipoproteinemias in non-alcoholic fatty liver disease: The lifelines cohort study.
600 *Metabolism*. 2017 Jul;72:37–46.
- 601 41. Tilg H, Moschen AR, Roden M. NAFLD and diabetes mellitus. *Nat Rev Gastroenterol Hepatol*. 2017
602 Jan;14(1):32–42.

- 603 42. Luukkonen PK, Zhou Y, Sädevirta S, Leivonen M, Arola J, Orešič M, et al. Hepatic ceramides dissociate
604 steatosis and insulin resistance in patients with non-alcoholic fatty liver disease. *J Hepatol.* 2016
605 May;64(5):1167–75.
- 606 43. Pelaseyed T, Bergström JH, Gustafsson JK, Ermund A, Birchenough GMH, Schütte A, et al. The mucus and
607 mucins of the goblet cells and enterocytes provide the first defense line of the gastrointestinal tract and
608 interact with the immune system. *Immunological Reviews.* 2014;260(1):8–20.
- 609 44. Turner JR. Intestinal mucosal barrier function in health and disease. *Nat Rev Immunol.* 2009
610 Nov;9(11):799–809.
- 611 45. Camilleri M. Leaky gut: mechanisms, measurement and clinical implications in humans. *Gut.* 2019
612 Aug;68(8):1516–26.
- 613 46. Mouries J, Brescia P, Silvestri A, Spadoni I, Sorribas M, Wiest R, et al. Microbiota-driven gut vascular
614 barrier disruption is a prerequisite for non-alcoholic steatohepatitis development. *J Hepatol.*
615 2019;71(6):1216–28.
- 616 47. Schoultz I, Keita ÅV. The Intestinal Barrier and Current Techniques for the Assessment of Gut
617 Permeability. *Cells.* 2020 Aug 17;9(8).
- 618 48. Bosi E, Molteni L, Radaelli MG, Folini L, Fermo I, Bazzigaluppi E, et al. Increased intestinal permeability
619 precedes clinical onset of type 1 diabetes. *Diabetologia.* 2006 Dec;49(12):2824–7.
- 620 49. De Munck TJI, Xu P, Verwijs HJA, Masclee AAM, Jonkers D, Verbeek J, et al. Intestinal permeability in
621 human nonalcoholic fatty liver disease: A systematic review and meta-analysis. *Liver Int.* 2020
622 Dec;40(12):2906–16.
- 623 50. Miele L, Valenza V, La Torre G, Montalto M, Cammarota G, Ricci R, et al. Increased intestinal permeability
624 and tight junction alterations in nonalcoholic fatty liver disease. *Hepatology.* 2009 Jun;49(6):1877–87.
- 625 51. Rahman K, Desai C, Iyer SS, Thorn NE, Kumar P, Liu Y, et al. Loss of Junctional Adhesion Molecule A
626 Promotes Severe Steatohepatitis in Mice on a Diet High in Saturated Fat, Fructose, and Cholesterol.
627 *Gastroenterology.* 2016;151(4):733-746.e12.
- 628 52. Pacifico L, Bonci E, Marandola L, Romaggioli S, Bascetta S, Chiesa C. Increased circulating zonulin in
629 children with biopsy-proven nonalcoholic fatty liver disease. *World Journal of Gastroenterology.* 2014
630 Dec 7;20(45):17107–14.
- 631 53. Cani PD, Amar J, Iglesias MA, Poggi M, Knauf C, Bastelica D, et al. Metabolic endotoxemia initiates obesity
632 and insulin resistance. *Diabetes.* 2007 Jul;56(7):1761–72.
- 633 54. Sonnenburg JL, Bäckhed F. Diet-microbiota interactions as moderators of human metabolism. *Nature.*
634 2016 Jul 7;535(7610):56–64.
- 635 55. Ducastel S, Touche V, Trabelsi M-S, Boulinguez A, Butruille L, Nawrot M, et al. The nuclear receptor FXR
636 inhibits Glucagon-Like Peptide-1 secretion in response to microbiota-derived Short-Chain Fatty Acids. *Sci*
637 *Rep.* 2020 13;10(1):174.

- 638 56. Mathewson ND, Jenq R, Mathew AV, Koenigsnecht M, Hanash A, Toubai T, et al. Gut microbiome-
639 derived metabolites modulate intestinal epithelial cell damage and mitigate graft-versus-host disease.
640 Nat Immunol. 2016 May;17(5):505–13.
- 641 57. Bäckhed F, Ding H, Wang T, Hooper LV, Koh GY, Nagy A, et al. The gut microbiota as an environmental
642 factor that regulates fat storage. PNAS. 2004 Nov 2;101(44):15718–23.
- 643 58. Wahlström A, Sayin SI, Marschall H-U, Bäckhed F. Intestinal Crosstalk between Bile Acids and Microbiota
644 and Its Impact on Host Metabolism. Cell Metab. 2016 Jul 12;24(1):41–50.
- 645 59. Chu H, Duan Y, Yang L, Schnabl B. Small metabolites, possible big changes: a microbiota-centered view of
646 non-alcoholic fatty liver disease. Gut. 2019 Feb;68(2):359–70.
- 647 60. Qin J, Li Y, Cai Z, Li S, Zhu J, Zhang F, et al. A metagenome-wide association study of gut microbiota in type
648 2 diabetes. Nature. 2012 Oct 4;490(7418):55–60.
- 649 61. Karlsson FH, Tremaroli V, Nookaew I, Bergström G, Behre CJ, Fagerberg B, et al. Gut metagenome in
650 European women with normal, impaired and diabetic glucose control. Nature. 2013 Jun;498(7452):99–
651 103.
- 652 62. Human Microbiome Project Consortium. Structure, function and diversity of the healthy human
653 microbiome. Nature. 2012 Jun 13;486(7402):207–14.
- 654 63. Aron-Wisnewsky J, Vigliotti C, Witjes J, Le P, Holleboom AG, Verheij J, et al. Gut microbiota and human
655 NAFLD: disentangling microbial signatures from metabolic disorders. Nat Rev Gastroenterol Hepatol.
656 2020 May;17(5):279–97.
- 657 64. Fan Y, Pedersen O. Gut microbiota in human metabolic health and disease. Nat Rev Microbiol. 2021
658 Jan;19(1):55–71.
- 659 65. Le Chatelier E, Nielsen T, Qin J, Prifti E, Hildebrand F, Falony G, et al. Richness of human gut microbiome
660 correlates with metabolic markers. Nature. 2013 Aug 29;500(7464):541–6.
- 661 66. Chiu C-C, Ching Y-H, Li Y-P, Liu J-Y, Huang Y-T, Huang Y-W, et al. Nonalcoholic Fatty Liver Disease Is
662 Exacerbated in High-Fat Diet-Fed Gnotobiotic Mice by Colonization with the Gut Microbiota from Patients
663 with Nonalcoholic Steatohepatitis. Nutrients. 2017 Nov 6;9(11).
- 664 67. Cani PD, de Vos WM. Next-Generation Beneficial Microbes: The Case of Akkermansia muciniphila. Front
665 Microbiol. 2017;8:1765.
- 666 68. Kim S, Lee Y, Kim Y, Seo Y, Lee H, Ha J, et al. Akkermansia muciniphila Prevents Fatty Liver Disease,
667 Decreases Serum Triglycerides, and Maintains Gut Homeostasis. Appl Environ Microbiol [Internet]. 2020
668 Mar 18 [cited 2021 Feb 22];86(7). Available from: <https://aem.asm.org/content/86/7/e03004-19>
- 669 69. Loomba R, Seguritan V, Li W, Long T, Klitgord N, Bhatt A, et al. Gut Microbiome-Based Metagenomic
670 Signature for Non-invasive Detection of Advanced Fibrosis in Human Nonalcoholic Fatty Liver Disease.
671 Cell Metab. 2017 May 2;25(5):1054-1062.e5.

- 672 70. Lelouvier B, Servant F, Païssé S, Brunet A-C, Benyahya S, Serino M, et al. Changes in blood microbiota
673 profiles associated with liver fibrosis in obese patients: A pilot analysis. *Hepatology*. 2016
674 Dec;64(6):2015–27.
- 675 71. Cani PD, Bibiloni R, Knauf C, Waget A, Neyrinck AM, Delzenne NM, et al. Changes in Gut Microbiota
676 Control Metabolic Endotoxemia-Induced Inflammation in High-Fat Diet–Induced Obesity and Diabetes in
677 Mice. *Diabetes*. 2008 Jun 1;57(6):1470–81.
- 678 72. Carpino G, Del Ben M, Pastori D, Carnevale R, Baratta F, Overi D, et al. Increased Liver Localization of
679 Lipopolysaccharides in Human and Experimental NAFLD. *Hepatology*. 2020 Aug;72(2):470–85.
- 680 73. Llorente C, Schnabl B. The Gut Microbiota and Liver Disease. *Cellular and Molecular Gastroenterology and
681 Hepatology*. 2015 May;1(3):275–84.
- 682 74. Chaudhry KK, Shukla PK, Mir H, Manda B, Gangwar R, Yadav N, et al. Glutamine supplementation
683 attenuates ethanol-induced disruption of apical junctional complexes in colonic epithelium and
684 ameliorates gut barrier dysfunction and fatty liver in mice. *The Journal of Nutritional Biochemistry*. 2016
685 Jan 1;27:16–26.
- 686 75. Zhu L, Baker SS, Gill C, Liu W, Alkhoury R, Baker RD, et al. Characterization of gut microbiomes in
687 nonalcoholic steatohepatitis (NASH) patients: a connection between endogenous alcohol and NASH.
688 *Hepatology*. 2013 Feb;57(2):601–9.
- 689 76. Raucy JL, Lasker J, Ozaki K, Zoleta V. Regulation of CYP2E1 by Ethanol and Palmitic Acid and CYP4A11 by
690 Clofibrate in Primary Cultures of Human Hepatocytes. *Toxicological Sciences*. 2004 Jun 1;79(2):233–41.
- 691 77. Eslam M, Sanyal AJ, George J, International Consensus Panel. MAFLD: A Consensus-Driven Proposed
692 Nomenclature for Metabolic Associated Fatty Liver Disease. *Gastroenterology*. 2020 May;158(7):1999-
693 2014.e1.
- 694 78. Yang G, Wei J, Liu P, Zhang Q, Tian Y, Hou G, et al. Role of the gut microbiota in type 2 diabetes and
695 related diseases. *Metabolism*. 2021 Apr;117:154712.
- 696 79. Furusawa Y, Obata Y, Fukuda S, Endo TA, Nakato G, Takahashi D, et al. Commensal microbe-derived
697 butyrate induces the differentiation of colonic regulatory T cells. *Nature*. 2013 Dec 19;504(7480):446–50.
- 698 80. Arpaia N, Campbell C, Fan X, Dikiy S, van der Veecken J, deRoos P, et al. Metabolites produced by
699 commensal bacteria promote peripheral regulatory T-cell generation. *Nature*. 2013 Dec
700 19;504(7480):451–5.
- 701 81. Zhou D, Pan Q, Xin F-Z, Zhang R-N, He C-X, Chen G-Y, et al. Sodium butyrate attenuates high-fat diet-
702 induced steatohepatitis in mice by improving gut microbiota and gastrointestinal barrier. *World J
703 Gastroenterol*. 2017 Jan 7;23(1):60–75.
- 704 82. Isobe J, Maeda S, Obata Y, Iizuka K, Nakamura Y, Fujimura Y, et al. Commensal-bacteria-derived butyrate
705 promotes the T-cell-independent IgA response in the colon. *Int Immunol*. 2020 Apr 12;32(4):243–58.
- 706 83. Wang Z, Klipfell E, Bennett BJ, Koeth R, Levison BS, Dugar B, et al. Gut flora metabolism of
707 phosphatidylcholine promotes cardiovascular disease. *Nature*. 2011 Apr 7;472(7341):57–63.

- 708 84. Koh A, De Vadder F, Kovatcheva-Datchary P, Bäckhed F. From Dietary Fiber to Host Physiology: Short-
709 Chain Fatty Acids as Key Bacterial Metabolites. *Cell*. 2016 Jun 2;165(6):1332–45.
- 710 85. Koh A, Molinaro A, Ståhlman M, Khan MT, Schmidt C, Mannerås-Holm L, et al. Microbially Produced
711 Imidazole Propionate Impairs Insulin Signaling through mTORC1. *Cell*. 2018 Nov 1;175(4):947-961.e17.
- 712 86. Chávez-Talavera O, Tailleux A, Lefebvre P, Staels B. Bile Acid Control of Metabolism and Inflammation in
713 Obesity, Type 2 Diabetes, Dyslipidemia, and Nonalcoholic Fatty Liver Disease. *Gastroenterology*. 2017
714 May;152(7):1679-1694.e3.
- 715 87. Chávez-Talavera O, Haas J, Grzych G, Tailleux A, Staels B. Bile acid alterations in nonalcoholic fatty liver
716 disease, obesity, insulin resistance and type 2 diabetes: what do the human studies tell? *Curr Opin
717 Lipidol*. 2019 Jun;30(3):244–54.
- 718 88. Sonne DP, van Nierop FS, Kulik W, Soeters MR, Vilsbøll T, Knop FK. Postprandial Plasma Concentrations of
719 Individual Bile Acids and FGF-19 in Patients With Type 2 Diabetes. *J Clin Endocrinol Metab*. 2016
720 Aug;101(8):3002–9.
- 721 89. Brufau G, Stellaard F, Prado K, Bloks VW, Jonkers E, Boverhof R, et al. Improved glycemic control with
722 colessevelam treatment in patients with type 2 diabetes is not directly associated with changes in bile acid
723 metabolism. *Hepatology*. 2010 Oct;52(4):1455–64.
- 724 90. Grzych G, Chávez-Talavera O, Descat A, Thuillier D, Verrijken A, Kouach M, et al. NASH-related increases
725 in plasma bile acid levels depend on insulin resistance. *JHEP Rep*. 2021 Apr;3(2):100222.
- 726 91. Caussy C, Hsu C, Singh S, Bassirian S, Kolar J, Faulkner C, et al. Serum bile acid patterns are associated
727 with the presence of NAFLD in twins, and dose-dependent changes with increase in fibrosis stage in
728 patients with biopsy-proven NAFLD. *Aliment Pharmacol Ther*. 2019 Jan;49(2):183–93.
- 729 92. Finn PD, Rodriguez D, Kohler J, Jiang Z, Wan S, Blanco E, et al. Intestinal TGR5 agonism improves hepatic
730 steatosis and insulin sensitivity in Western diet-fed mice. *Am J Physiol Gastrointest Liver Physiol*. 2019
731 Mar 1;316(3):G412–24.
- 732 93. Wang Y-D, Chen W-D, Yu D, Forman BM, Huang W. The G-protein-coupled bile acid receptor, Gpbar1
733 (TGR5), negatively regulates hepatic inflammatory response through antagonizing nuclear factor κ light-
734 chain enhancer of activated B cells (NF- κ B) in mice. *Hepatology*. 2011 Oct;54(4):1421–32.
- 735 94. Alvarez-Sola G, Uriarte I, Latasa MU, Fernandez-Barrena MG, Urtasun R, Elizalde M, et al. Fibroblast
736 growth factor 15/19 (FGF15/19) protects from diet-induced hepatic steatosis: development of an FGF19-
737 based chimeric molecule to promote fatty liver regeneration. *Gut*. 2017 Oct 1;66(10):1818–28.
- 738 95. Zhou M, Learned RM, Rossi SJ, DePaoli AM, Tian H, Ling L. Engineered FGF19 eliminates bile acid toxicity
739 and lipotoxicity leading to resolution of steatohepatitis and fibrosis in mice. *Hepatol Commun*. 2017
740 Dec;1(10):1024–42.
- 741 96. Markham A, Keam SJ. Obeticholic Acid: First Global Approval. *Drugs*. 2016 Aug;76(12):1221–6.

- 742 97. Neuschwander-Tetri BA, Loomba R, Sanyal AJ, Lavine JE, Van Natta ML, Abdelmalek MF, et al. Farnesoid X
743 nuclear receptor ligand obeticholic acid for non-cirrhotic, non-alcoholic steatohepatitis (FLINT): a
744 multicentre, randomised, placebo-controlled trial. *Lancet*. 2015 Mar 14;385(9972):956–65.
- 745 98. Chianelli D, Rucker PV, Roland J, Tully DC, Nelson J, Liu X, et al. Nidufexor (LMB763), a Novel FXR
746 Modulator for the Treatment of Nonalcoholic Steatohepatitis. *J Med Chem*. 2020 Apr 23;63(8):3868–80.
- 747 99. Tully DC, Rucker PV, Chianelli D, Williams J, Vidal A, Alper PB, et al. Discovery of Tropifexor (LJN452), a
748 Highly Potent Non-bile Acid FXR Agonist for the Treatment of Cholestatic Liver Diseases and Nonalcoholic
749 Steatohepatitis (NASH). *J Med Chem*. 2017 Dec 28;60(24):9960–73.
- 750 100. Prawitt J, Abdelkarim M, Stroeve JHM, Popescu I, Duez H, Velagapudi VR, et al. Farnesoid X Receptor
751 Deficiency Improves Glucose Homeostasis in Mouse Models of Obesity. *Diabetes*. 2011 Jul 1;60(7):1861–
752 71.
- 753 101. Trabelsi M-S, Daoudi M, Prawitt J, Ducastel S, Touche V, Sayin SI, et al. Farnesoid X receptor inhibits
754 glucagon-like peptide-1 production by enteroendocrine L cells. *Nat Commun*. 2015 Jul 2;6(1):1–13.
- 755 102. Li F, Jiang C, Krausz KW, Li Y, Albert I, Hao H, et al. Microbiome remodelling leads to inhibition of
756 intestinal farnesoid X receptor signalling and decreased obesity. *Nat Commun*. 2013 Sep 24;4(1):2384.
- 757 103. Jiang C, Xie C, Lv Y, Li J, Krausz KW, Shi J, et al. Intestine-selective farnesoid X receptor inhibition improves
758 obesity-related metabolic dysfunction. *Nat Commun*. 2015 Dec 15;6(1):1–18.
- 759 104. Inagaki T, Moschetta A, Lee Y-K, Peng L, Zhao G, Downes M, et al. Regulation of antibacterial defense in
760 the small intestine by the nuclear bile acid receptor. *Proc Natl Acad Sci U S A*. 2006 Mar 7;103(10):3920–
761 5.
- 762 105. Sinal CJ, Tohkin M, Miyata M, Ward JM, Lambert G, Gonzalez FJ. Targeted Disruption of the Nuclear
763 Receptor FXR/BAR Impairs Bile Acid and Lipid Homeostasis. *Cell*. 2000 Sep 15;102(6):731–44.
- 764 106. Lueschow SR, McElroy SJ. The Paneth Cell: The Curator and Defender of the Immature Small Intestine.
765 *Front Immunol*. 2020;11:587.
- 766 107. Reboldi A, Cyster JG. Peyer's patches: organizing B-cell responses at the intestinal frontier. *Immunol Rev*.
767 2016 May;271(1):230–45.
- 768 108. Magri G, Comerma L, Pybus M, Sintes J, Lligé D, Segura-Garzón D, et al. Human Secretory IgM Emerges
769 from Plasma Cells Clonally Related to Gut Memory B Cells and Targets Highly Diverse Commensals.
770 *Immunity*. 2017 Jul 18;47(1):118-134.e8.
- 771 109. Luck H, Khan S, Kim JH, Copeland JK, Revelo XS, Tsai S, et al. Gut-associated IgA+ immune cells regulate
772 obesity-related insulin resistance. *Nat Commun*. 2019 Aug 13;10(1):3650.
- 773 110. Olivares-Villagómez D, Van Kaer L. Intestinal Intraepithelial Lymphocytes: Sentinels of the Mucosal
774 Barrier. *Trends Immunol*. 2018 Apr;39(4):264–75.

- 775 111. Hadis U, Wahl B, Schulz O, Hardtke-Wolenski M, Schippers A, Wagner N, et al. Intestinal tolerance
776 requires gut homing and expansion of FoxP3+ regulatory T cells in the lamina propria. *Immunity*. 2011
777 Feb 25;34(2):237–46.
- 778 112. De Schepper S, Verheijden S, Aguilera-Lizarraga J, Viola MF, Boesmans W, Stakenborg N, et al. Self-
779 Maintaining Gut Macrophages Are Essential for Intestinal Homeostasis. *Cell*. 2018 Oct 4;175(2):400-
780 415.e13.
- 781 113. Vivier E, Artis D, Colonna M, Diefenbach A, Di Santo JP, Eberl G, et al. Innate Lymphoid Cells: 10 Years On.
782 *Cell*. 2018 Aug 23;174(5):1054–66.
- 783 114. Exley MA. What Makes MAITs Wait? *Immunity*. 2016 Jan 19;44(1):7–9.
- 784 115. Scheithauer TPM, Rampanelli E, Nieuwdorp M, Vallance BA, Verchere CB, van Raalte DH, et al. Gut
785 Microbiota as a Trigger for Metabolic Inflammation in Obesity and Type 2 Diabetes. *Front Immunol*.
786 2020;11:571731.
- 787 116. Winer DA, Winer S, Dranse HJ, Lam TKT. Immunologic impact of the intestine in metabolic disease. *J Clin*
788 *Invest*. 2017 03;127(1):33–42.
- 789 117. Kawano Y, Nakae J, Watanabe N, Kikuchi T, Tateya S, Tamori Y, et al. Colonic Pro-inflammatory
790 Macrophages Cause Insulin Resistance in an Intestinal Ccl2/Ccr2-Dependent Manner. *Cell Metab*. 2016
791 09;24(2):295–310.
- 792 118. Monteiro-Sepulveda M, Touch S, Mendes-Sá C, André S, Poitou C, Allatif O, et al. Jejunal T Cell
793 Inflammation in Human Obesity Correlates with Decreased Enterocyte Insulin Signaling. *Cell Metab*. 2015
794 Jul 7;22(1):113–24.
- 795 119. Wong VW-S, Chan RS-M, Wong GL-H, Cheung BH-K, Chu WC-W, Yeung DK-W, et al. Community-based
796 lifestyle modification programme for non-alcoholic fatty liver disease: a randomized controlled trial. *J*
797 *Hepatol*. 2013 Sep;59(3):536–42.
- 798 120. Romero-Gómez M, Zelber-Sagi S, Trenell M. Treatment of NAFLD with diet, physical activity and exercise.
799 *Journal of Hepatology*. 2017 Oct 1;67(4):829–46.
- 800 121. Buchwald H, Buchwald JN. Metabolic (Bariatric and Nonbariatric) Surgery for Type 2 Diabetes: A Personal
801 Perspective Review. *Diabetes Care*. 2019 Feb;42(2):331–40.
- 802 122. Souto KP, Meinhardt NG, Ramos MJ, Ulbrich-Kulkzynski JM, Stein AT, Damin DC. Nonalcoholic fatty liver
803 disease in patients with different baseline glucose status undergoing bariatric surgery: analysis of
804 intraoperative liver biopsies and literature review. *Surg Obes Relat Dis*. 2018 Jan;14(1):66–73.
- 805 123. Lassailly G, Caiazzo R, Buob D, Pigeyre M, Verkindt H, Labreuche J, et al. Bariatric Surgery Reduces
806 Features of Nonalcoholic Steatohepatitis in Morbidly Obese Patients. *Gastroenterology*. 2015
807 Aug;149(2):379–88; quiz e15-16.
- 808 124. Lassailly G, Caiazzo R, Ntandja-Wandji L-C, Gnemmi V, Baud G, Verkindt H, et al. Bariatric Surgery Provides
809 Long-term Resolution of Nonalcoholic Steatohepatitis and Regression of Fibrosis. *Gastroenterology*. 2020
810 Oct;159(4):1290-1301.e5.

- 811 125. Wirth K, Sheka A, Kizy S, Irey R, Benner A, Sieger G, et al. Bariatric Surgery is Associated With Decreased
812 Progression of Nonalcoholic Fatty Liver Disease to Cirrhosis: A Retrospective Cohort Analysis. *Annals of*
813 *Surgery*. 2020 Jul;272(1):32–9.
- 814 126. Borges-Canha M, Neves JS, Mendonça F, Silva MM, Costa C, Cabral PM, et al. The Impact of Bariatric
815 Surgery on Hepatic Function and Predictors of Liver Steatosis and Fibrosis. *Obes Surg*. 2020
816 Aug;30(8):2935–41.
- 817 127. Harrison SA, Rinella ME, Abdelmalek MF, Trotter JF, Paredes AH, Arnold HL, et al. NGM282 for treatment
818 of non-alcoholic steatohepatitis: a multicentre, randomised, double-blind, placebo-controlled, phase 2
819 trial. *Lancet*. 2018 24;391(10126):1174–85.
- 820 128. Harrison SA, Rossi SJ, Paredes AH, Trotter JF, Bashir MR, Guy CD, et al. NGM282 Improves Liver Fibrosis
821 and Histology in 12 Weeks in Patients With Nonalcoholic Steatohepatitis. *Hepatology*. 2020
822 Apr;71(4):1198–212.
- 823 129. Harrison SA, Neff G, Guy CD, Bashir MR, Paredes AH, Frias JP, et al. Efficacy and Safety of Aldafermin, an
824 Engineered FGF19 Analog, in a Randomized, Double-Blind, Placebo-Controlled Trial of Patients With
825 Nonalcoholic Steatohepatitis. *Gastroenterology*. 2021 Jan;160(1):219-231.e1.
- 826 130. NGM Bio Reports Topline Results from 24-Week Phase 2b ALPINE 2/3 Study of Aldafermin in NASH |
827 NGM Biopharmaceuticals, Inc. [Internet]. [cited 2021 Jun 23]. Available from:
828 [https://ir.ngmbio.com/news-releases/news-release-details/ngm-bio-reports-topline-results-24-week-](https://ir.ngmbio.com/news-releases/news-release-details/ngm-bio-reports-topline-results-24-week-phase-2b-alpine-23-study/)
829 [phase-2b-alpine-23-study/](https://ir.ngmbio.com/news-releases/news-release-details/ngm-bio-reports-topline-results-24-week-phase-2b-alpine-23-study/)
- 830 131. Mudaliar S, Henry RR, Sanyal AJ, Morrow L, Marschall H-U, Kipnes M, et al. Efficacy and safety of the
831 farnesoid X receptor agonist obeticholic acid in patients with type 2 diabetes and nonalcoholic fatty liver
832 disease. *Gastroenterology*. 2013 Sep;145(3):574-582.e1.
- 833 132. Younossi ZM, Ratziu V, Loomba R, Rinella M, Anstee QM, Goodman Z, et al. Obeticholic acid for the
834 treatment of non-alcoholic steatohepatitis: interim analysis from a multicentre, randomised, placebo-
835 controlled phase 3 trial. *The Lancet*. 2019 Dec 14;394(10215):2184–96.
- 836 133. Roth JD, Feigh M, Veidal SS, Fensholdt LK, Rigbolt KT, Hansen HH, et al. INT-767 improves
837 histopathological features in a diet-induced ob/ob mouse model of biopsy-confirmed non-alcoholic
838 steatohepatitis. *World J Gastroenterol*. 2018 Jan 14;24(2):195–210.
- 839 134. Comeglio P, Cellai I, Mello T, Filippi S, Maneschi E, Corcetto F, et al. INT-767 prevents NASH and promotes
840 visceral fat brown adipogenesis and mitochondrial function. *J Endocrinol*. 2018 Aug;238(2):107–27.
- 841 135. Hernandez ED, Zheng L, Kim Y, Fang B, Liu B, Valdez RA, et al. Tropifexor-Mediated Abrogation of
842 Steatohepatitis and Fibrosis Is Associated With the Antioxidative Gene Expression Profile in Rodents.
843 *Hepatology Communications*. 2019;3(8):1085–97.
- 844 136. Downes M, Verdecia MA, Roecker AJ, Hughes R, Hogenesch JB, Kast-Woelbern HR, et al. A chemical,
845 genetic, and structural analysis of the nuclear bile acid receptor FXR. *Mol Cell*. 2003 Apr;11(4):1079–92.

- 846 137. Pathak P, Xie C, Nichols RG, Ferrell JM, Boehme S, Krausz KW, et al. Intestine farnesoid X receptor agonist
847 and the gut microbiota activate G-protein bile acid receptor-1 signaling to improve metabolism.
848 Hepatology. 2018;68(4):1574–88.
- 849 138. Cui J, Philo L, Nguyen P, Hofflich H, Hernandez C, Bettencourt R, et al. Sitagliptin vs. placebo for non-
850 alcoholic fatty liver disease: A randomized controlled trial. J Hepatol. 2016 Aug;65(2):369–76.
- 851 139. Yan J, Yao B, Kuang H, Yang X, Huang Q, Hong T, et al. Liraglutide, Sitagliptin, and Insulin Glargine Added
852 to Metformin: The Effect on Body Weight and Intrahepatic Lipid in Patients With Type 2 Diabetes Mellitus
853 and Nonalcoholic Fatty Liver Disease. Hepatology. 2019 Jun;69(6):2414–26.
- 854 140. Armstrong MJ, Gaunt P, Aithal GP, Barton D, Hull D, Parker R, et al. Liraglutide safety and efficacy in
855 patients with non-alcoholic steatohepatitis (LEAN): a multicentre, double-blind, randomised, placebo-
856 controlled phase 2 study. The Lancet. 2016 Feb 13;387(10019):679–90.
- 857 141. Khoo J, Hsiang JC, Taneja R, Koo S-H, Soon G-H, Kam CJ, et al. Randomized trial comparing effects of
858 weight loss by liraglutide with lifestyle modification in non-alcoholic fatty liver disease. Liver Int.
859 2019;39(5):941–9.
- 860 142. Guo W, Tian W, Lin L, Xu X. Liraglutide or insulin glargine treatments improves hepatic fat in obese
861 patients with type 2 diabetes and nonalcoholic fatty liver disease in twenty-six weeks: A randomized
862 placebo-controlled trial. Diabetes Res Clin Pract. 2020 Dec;170:108487.
- 863 143. Feng W, Gao C, Bi Y, Wu M, Li P, Shen S, et al. Randomized trial comparing the effects of gliclazide,
864 liraglutide, and metformin on diabetes with non-alcoholic fatty liver disease. Journal of Diabetes.
865 2017;9(8):800–9.
- 866 144. Kuchay MS, Krishan S, Mishra SK, Choudhary NS, Singh MK, Wasir JS, et al. Effect of dulaglutide on liver
867 fat in patients with type 2 diabetes and NAFLD: randomised controlled trial (D-LIFT trial). Diabetologia.
868 2020 Nov;63(11):2434–45.
- 869 145. Newsome PN, Buchholtz K, Cusi K, Linder M, Okanoue T, Ratziu V, et al. A Placebo-Controlled Trial of
870 Subcutaneous Semaglutide in Nonalcoholic Steatohepatitis. N Engl J Med. 2020 Nov 13;
- 871 146. Boland ML, Laker RC, Mather K, Nawrocki A, Oldham S, Boland BB, et al. Resolution of NASH and hepatic
872 fibrosis by the GLP-1R and GCGR dual-agonist cotadutide via modulating mitochondrial function and
873 lipogenesis. Nature Metabolism. 2020 May;2(5):413–31.
- 874 147. Vrieze A, Van Nood E, Holleman F, Salojärvi J, Kootte RS, Bartelsman JFWM, et al. Transfer of intestinal
875 microbiota from lean donors increases insulin sensitivity in individuals with metabolic syndrome.
876 Gastroenterology. 2012 Oct;143(4):913-916.e7.
- 877 148. Craven L, Rahman A, Nair Parvathy S, Beaton M, Silverman J, Qumosani K, et al. Allogenic Fecal
878 Microbiota Transplantation in Patients With Nonalcoholic Fatty Liver Disease Improves Abnormal Small
879 Intestinal Permeability: A Randomized Control Trial. Am J Gastroenterol. 2020 Jul;115(7):1055–65.
- 880 149. van Nood E, Vrieze A, Nieuwdorp M, Fuentes S, Zoetendal EG, de Vos WM, et al. Duodenal infusion of
881 donor feces for recurrent Clostridium difficile. N Engl J Med. 2013 Jan 31;368(5):407–15.

- 882 150. Bäckhed F, Manchester JK, Semenkovich CF, Gordon JI. Mechanisms underlying the resistance to diet-
883 induced obesity in germ-free mice. *PNAS*. 2007 Jan 16;104(3):979–84.
- 884 151. Mahana D, Trent CM, Kurtz ZD, Bokulich NA, Battaglia T, Chung J, et al. Antibiotic perturbation of the
885 murine gut microbiome enhances the adiposity, insulin resistance, and liver disease associated with high-
886 fat diet. *Genome Med*. 2016 Apr 27;8(1):48.
- 887 152. Abdel-Razik A, Mousa N, Shabana W, Refaey M, Elzehery R, Elhelaly R, et al. Rifaximin in nonalcoholic
888 fatty liver disease: hit multiple targets with a single shot. *Eur J Gastroenterol Hepatol*. 2018
889 Oct;30(10):1237–46.
- 890 153. Chong CYL, Orr D, Plank LD, Vatanen T, O’Sullivan JM, Murphy R. Randomised Double-Blind Placebo-
891 Controlled Trial of Inulin with Metronidazole in Non-Alcoholic Fatty Liver Disease (NAFLD). *Nutrients*.
892 2020 Mar 27;12(4).
- 893 154. Gibson GR, Hutkins R, Sanders ME, Prescott SL, Reimer RA, Salminen SJ, et al. Expert consensus
894 document: The International Scientific Association for Probiotics and Prebiotics (ISAPP) consensus
895 statement on the definition and scope of prebiotics. *Nat Rev Gastroenterol Hepatol*. 2017 Aug;14(8):491–
896 502.
- 897 155. Bao T, He F, Zhang X, Zhu L, Wang Z, Lu H, et al. Inulin Exerts Beneficial Effects on Non-Alcoholic Fatty
898 Liver Disease via Modulating gut Microbiome and Suppressing the Lipopolysaccharide-Toll-Like Receptor
899 4-M ψ -Nuclear Factor- κ B-Nod-Like Receptor Protein 3 Pathway via gut-Liver Axis in Mice. *Front*
900 *Pharmacol*. 2020;11:558525.
- 901 156. Behrouz V, Aryaeian N, Zahedi MJ, Jazayeri S. Effects of probiotic and prebiotic supplementation on
902 metabolic parameters, liver aminotransferases, and systemic inflammation in nonalcoholic fatty liver
903 disease: A randomized clinical trial. *J Food Sci*. 2020 Oct;85(10):3611–7.
- 904 157. Hill C, Guarner F, Reid G, Gibson GR, Merenstein DJ, Pot B, et al. Expert consensus document. The
905 International Scientific Association for Probiotics and Prebiotics consensus statement on the scope and
906 appropriate use of the term probiotic. *Nat Rev Gastroenterol Hepatol*. 2014 Aug;11(8):506–14.
- 907 158. Park S-S, Lee Y-J, Song S, Kim B, Kang H, Oh S, et al. *Lactobacillus acidophilus* NS1 attenuates diet-induced
908 obesity and fatty liver. *J Endocrinol*. 2018 May;237(2):87–100.
- 909 159. Ahn SB, Jun DW, Kang B-K, Lim JH, Lim S, Chung M-J. Randomized, Double-blind, Placebo-controlled Study
910 of a Multispecies Probiotic Mixture in Nonalcoholic Fatty Liver Disease. *Sci Rep*. 2019 Apr 5;9(1):5688.
- 911 160. Alisi A, Bedogni G, Baviera G, Giorgio V, Porro E, Paris C, et al. Randomised clinical trial: The beneficial
912 effects of VSL#3 in obese children with non-alcoholic steatohepatitis. *Aliment Pharmacol Ther*. 2014
913 Jun;39(11):1276–85.
- 914 161. Lensu S, Pariyani R, Mäkinen E, Yang B, Saleem W, Munukka E, et al. Prebiotic Xylo-Oligosaccharides
915 Ameliorate High-Fat-Diet-Induced Hepatic Steatosis in Rats. *Nutrients*. 2020 Oct 22;12(11).
- 916 162. Asgharian A, Askari G, Esmailzade A, Feizi A, Mohammadi V. The Effect of Symbiotic Supplementation on
917 Liver Enzymes, C-reactive Protein and Ultrasound Findings in Patients with Non-alcoholic Fatty Liver

- 918 Disease: A Clinical Trial. *Int J Prev Med* [Internet]. 2016 Mar 10 [cited 2021 Feb 22];7. Available from:
919 <https://www.ncbi.nlm.nih.gov/pmc/articles/PMC4809112/>
- 920 163. Eslamparast T, Poustchi H, Zamani F, Sharafkhah M, Malekzadeh R, Hekmatdoost A. Synbiotic
921 supplementation in nonalcoholic fatty liver disease: a randomized, double-blind, placebo-controlled pilot
922 study. *Am J Clin Nutr*. 2014 Mar;99(3):535–42.
- 923 164. Scorletti E, Afolabi PR, Miles EA, Smith DE, Almealmadi A, Alshathry A, et al. Synbiotics Alter Fecal
924 Microbiomes, But Not Liver Fat or Fibrosis, in a Randomized Trial of Patients With Nonalcoholic Fatty
925 Liver Disease. *Gastroenterology*. 2020 May;158(6):1597-1610.e7.
- 926 165. Neuschwander-Tetri BA, Loomba R, Sanyal AJ, Lavine JE, Van Natta ML, Abdelmalek MF, et al. Farnesoid X
927 nuclear receptor ligand obeticholic acid for non-cirrhotic, non-alcoholic steatohepatitis (FLINT): a
928 multicentre, randomised, placebo-controlled trial. *Lancet*. 2015 Mar 14;385(9972):956–65.
- 929

930 **Figure 1: The cross-talk between liver and metabolic organs is altered in T2D and NAFLD.** Common
931 dysregulations observed in T2D and NAFLD highlighting the central role of the liver and its dialogue with
932 metabolic organs.

933 (Abbreviation: FFA: Free Fatty Acid)

934

935 **Figure 2: Gut dysfunctions alter liver health in T2D and/or NAFLD.** Left panel shows the multiple
936 pathways of intestine-liver cross-talk in the healthy state. Enterocytes mediate the post-prandial
937 absorption of nutrients, such as fats, regulating TG storage and chylomicron synthesis. The mucus layer
938 and TJ complexes protect against bacterial translocation and endotoxemia. SCFA produced by the
939 intestinal microbiota improve the gut barrier through mucin and IgA production, by goblet cells and LB
940 respectively. Conjugated and deconjugated BA via binding to TGR5 receptor enhance GLP-1 release to
941 maintain glucose homeostasis, and to FXR increase FGF15/19 synthesis.

942 Right panel shows the dysregulations of these pathways in T2D and/or NAFLD in relation to excess calorie
943 intake and their impact on the liver. Increased FA absorption promotes gut and liver inflammation, and
944 liver steatosis. The gut barrier disruption is illustrated by a thinner mucus layer and a decrease of TJ,
945 which is exacerbated by microbiota alterations. Dysbiosis, associated with increased LPS and ethanol
946 levels, exacerbates gut inflammation, bacteria translocation in the portal circulation and endotoxemia
947 increasing liver steatosis, inflammation and fibrosis. Moreover, the change of SCFA producing bacteria
948 worsens gut permeability by decreasing mucin and IgA levels, promoting liver steatosis and IR.
949 Simultaneously, alterations in intestinal BA metabolism, such as decreased BA deconjugation, in these
950 pathological contexts may lead to reduced levels of GLP-1 and FGF15/19, hence impacting on liver
951 injuries such as steatosis and fibrosis.

952 (Abbreviations: FA: Fatty Acid; LPS: lipopolysaccharide; EtOH: Ethanol; LT: T lymphocyte; LB: B
953 Lymphocyte; DC: dendritic cell; BA: Bile Acids; SCFA: short chain fatty acid; TGR5: takeda g-protein-
954 coupled receptor 5; FXR: farnesoid X receptor; GLP-1: Glucagon-like peptide-1; FGF15/19: Fibroblast
955 growth factor 15 or 19; TG: triglycerides; TJ: Tight Junctions; IgA: Immunoglobulin A; ZO-1: Zonula
956 Occludens 1; JAM-A: junctional adhesion molecule A; BSH: Bile Salt Hydrolase; ER stress: Endoplasmic
957 Reticulum Stress; IR: Insulin resistance; T2D: Type 2 Diabetes; NAFLD: Non-Alcoholic Fatty Liver diseases)

958

959 **Table 1: Clinical trials on NAFLD treatments targeting gut functions.**

960 Abbreviations: ALT : alanine aminotransferase; AST : aspartate aminotransferase; BMI : body mass index,
961 GGT : gamma-glutamyl transferase; MRI : magnetic resonance imaging; NAFLD : non-alcoholic fatty liver
962 disease; NAS : NAFLD activity score; NASH : non-alcoholic steatohepatitis; OCA : obeticholic acid; OGTT :
963 oral glucose tolerance test; T2D : type 2 diabetes; TG : triglyceride

964

965

966

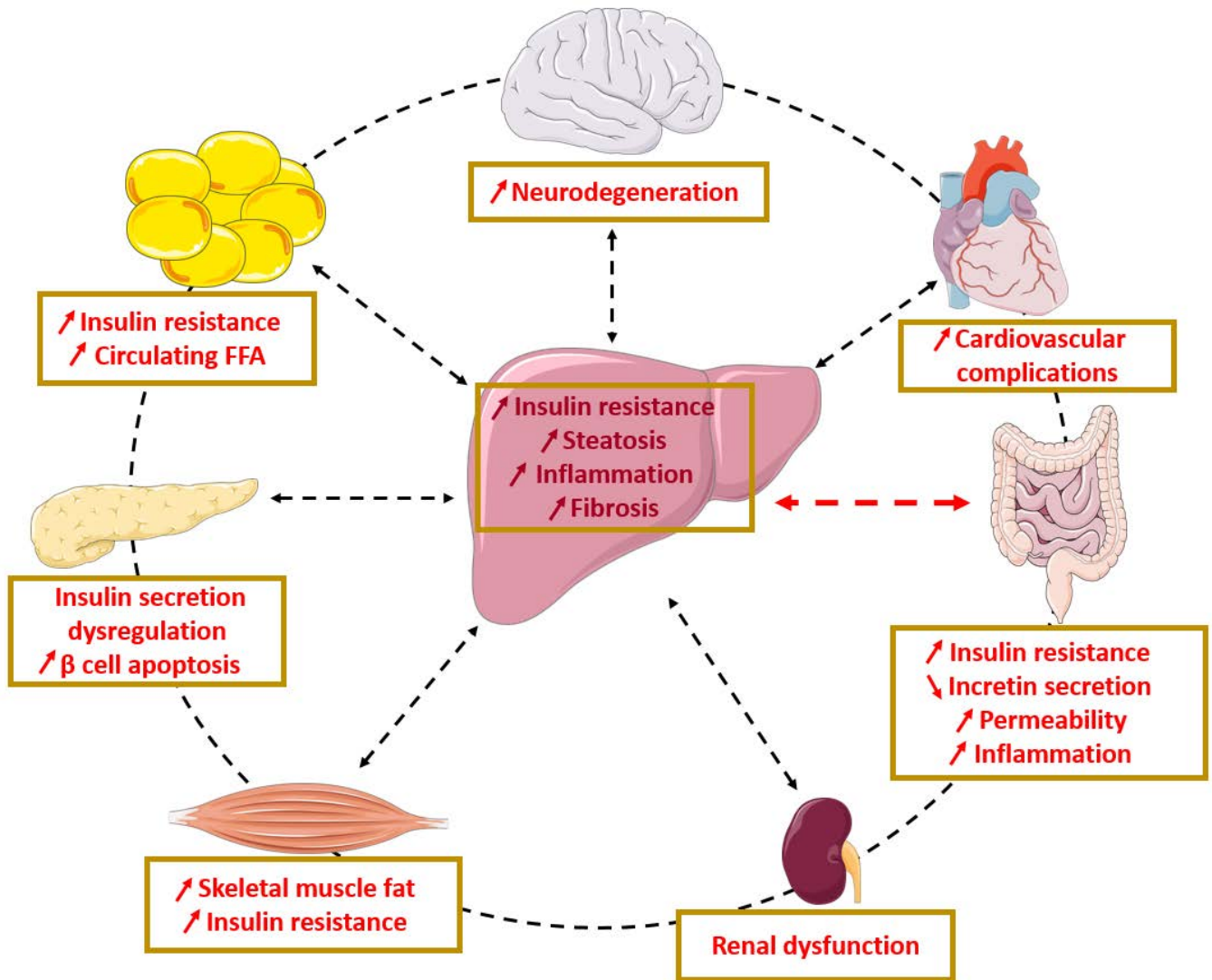
967

968

969

970

971



972

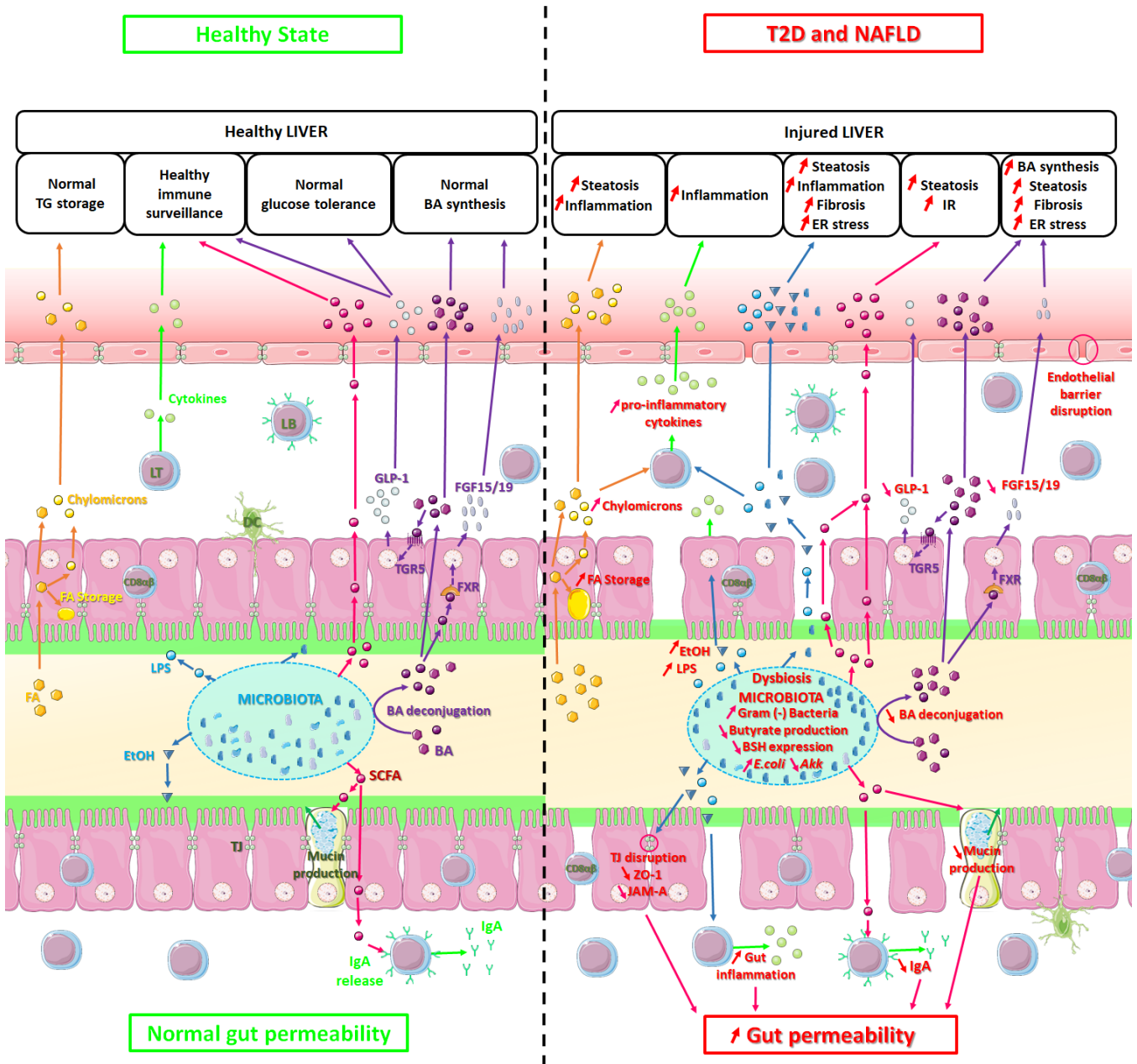
973

974

975

976

Figure 1



977

978

979

Figure 2

Treatment	n NAFLD patients	NAFLD type	Diagnostic	n T2D patients	Treatment effects on NAFLD	Treatment effects on T2D/IR	Study
Bariatric surgery							
	109	NASH	Liver biopsy	69	NASH reversion at 1 year post-surgery in 85% of patients	Reduction of fasting glycemia and insulin resistance from baseline	[123]
	64	NASH	Liver biopsy	?	NASH reversion at 5 year post surgery in 85% of patients	Reduction of fasting glycemia, HbA1c, Insulin resistance index from baseline	[124]
	2942	NAFL	?	987	Reduced risk to develop hepatic cirrhosis if patients underwent bariatric surgery		[125]
	1955	NAFL	FLI score : TG, BMI, GGT and waist circumference BARD score : BMI, AST/ALT, diabetes	522	Reduction of both FLI and BRAD score 1 year after surgery		[126]
FGF19 analogs							
Aldafermin (NGM282)							
	27 (3 mg) 28 (6 mg)	NASH	Liver biopsy MRI ALT	15 (3 mg) 17 (6 mg)	Decrease of hepatic fat content > 30% in 85% of patients, independently of dose Decrease of circulating fibrosis markers	No impact on fasting glycemia or insulin resistance	[127]
	24 (1 mg) 19 (3 mg)	NASH	Liver biopsy MRI ALT	9 (1 mg) 7 (3 mg)	Dose dependent improvement of NASH and fibrosis		[128]
	53 (1 mg)	NASH	Liver biopsy MRI ALT	32	Reduction of hepatic fat content, NAS score, fibrosis and ALT	No impact on fasting glycemia, HbA1c or HOMA-IR	[129]
FXR agonists							
Obeticholic Acid (OCA)							
	20 (25 mg) 21 (50 mg)	NAFL	Ultrasonography (17 + 18) ALT (3 + 5) Liver biopsy (0 + 2)	20 (25 mg) 21 (50 mg)	Increase plasma FGF19 Reduction of circulating fibrosis markers	Improve insulin sensitivity	[131]
	141	NASH	Liver biopsy	75	Liver histology improvement Decrease of weight loss, ALT, GGT	Increase of insulin resistance and fasting insulimemia	[165]
	312 (10 mg) 308 (25 mg)	NASH	Liver biopsy	171 (10 mg) 171 (25 mg)	Dose dependent fibrosis reduction Reduction of NAS score for the 25 mg dose	In T2D patients, early increase of glycemia and HbA1c, which return to placebo level by month 6	[132]

Targeting Incretin pathway							
Sitagliptin							
	25	NAFL	MRI + ALT	12	Not better than placebo to improve liver fat content	No effect on glycemia, insulinemia, HbA1c, IR	[138]
+ Metformin	27	NAFL	MRI	27	Reduction of hepatic fat fraction	Reduction of HbA1c	[139]
Liraglutide							
	23	NASH	Liver biopsy	9	NASH resolution Reduction of NAS score components	Reduction of HbA1c and fasting glycemia	[140]
	14	NAFL	MRI + ALT	?	Reduction of liver fat fraction from baseline Decrease of AST and ALT	Reduction of Insulin resistance, glycemia and insulinemia from baseline	[141]
	31	NAFL	Steatosis on liver biopsy or imaging technique	31	Reduction of intrahepatic content of lipids Decrease of AST and ALT from baseline	Reduction of insulin resistance	[142]
	29	NAFL	Ultrasonography	29	Reduction of hepatic fat Decrease of AST and ALT	Improvement in fasting glycemia, HbA1c and glucose tolerance after OGTT	[143]
+ Metformin	24	NAFL	MRI	27	Reduction of hepatic fat fraction	Reduction of HbA1c, fasting glycemia and post prandial plasma glucose	[139]
Semaglutide							
	80 (0.1 mg) 78 (0.2 mg) 82 (0.4 mg)	NASH	Liver biopsy	49 (0.1 mg) 51 (0.2 mg) 49 (0.4 mg)	NASH Resolution Reduction of ALT and AST		[145]
Targeting microbiota							
Allogenic FMT							
	15	NAFL	Liver biopsy + FibroScan + ultrasonography	?	No effect	No effect	[148]
Antibiotics							
Rifaximin	25	NASH	Liver biopsy + elevated ALT level	11	Reduction at 3 and 6 months of ALT, NAFLD-liver fat score, endotoxemia, IL6 Decrease at 6 months of AST Increase at 3 and 6 month of IL10	Reduction at 3 and 6 months of insulin resistance Reduction at 6 month of glycemia and insulinemia	[152]
Metrodinazole + inulin	20	?	Liver biopsy or BMI>27 + T2D or metabolic	7	Reduction of ALT	No effect	[153]

			syndrome with elevated ALT				
Prebiotics							
Inulin	29	NAFL	Ultrasonography + ALT	0	Reduction of ALT, AST and TG	Reduction of fasting glycemia	[156]
Probiotics							
<i>Lactobacillus acidophilus</i> , <i>Lactobacillus rhamnosus</i> , <i>Lactobacillus paracasei</i> , <i>Pediococcus pentosaceus</i> , <i>Bifidobacterium lactis</i> & <i>Bifidobacterium breve</i>	30	NAFL	MRI	?	Reduction of intrahepatic fat Reduction of TG	No changes in fasting glycemia, HOMA-IR or insulinemia	[159]
VSL#3	22 children	NASH	Liver biopsy + ALT	?	No effect on ALT Improvement of fatty liver	No effect on insulin resistance or fasting glycemia Increase of GLP-1	[160]
Symbiotics							
<i>Lactobacillus acidophilus</i> , <i>Lactobacillus rhamnosus</i> , <i>Lactobacillus casei</i> , <i>Lactobacillus bulgaricus</i> , <i>Bifidobacterium longum</i> , <i>Bifidobacterium breve</i> & <i>Streptococcus thermophilus</i> + fructooligosaccharides	38	NAFL	Ultrasonography	?	No effect on ALT Improvement of steatosis		[162]
	26	NAFL	Ultrasonography + elevated ALT	?	Decrease of ALT Improvement of fibrosis score	Reduction of insulin resistance, fasting glycemia and insulinemia	[163]
<i>Bifidobacterium animalis sub lactis BB12</i> + fructooligosaccharides	45	NAFL	MRI	17	No improvement in fatty liver Reduction of NAFLD fibrosis score vs baseline, but not vs placebo		[164]

980 ALT : alanine aminotransferase, AST : aspartate aminotransferase, BMI : body mass index, GGT : gamma-glutamyl transferase, MRI : magnetic
981 resonance imaging, NAFLD : non-alcoholic fatty liver disease, NAS : NAFLD activity score, NASH : non-alcoholic steatohepatitis, OCA : obeticholic
982 acid, OGTT : oral glucose tolerance test, T2D : type 2 diabetes, TG : triglycerides

983

984

Table 1

985