



**HAL**  
open science

## Relationship between influenza and dengue outbreaks, and subsequent bacterial sepsis in French Guiana: A time series analysis

Claire Cropet, Philippe Abboud, Emilie Mosnier, Loïc Epelboin, Félix Djossou, Ward Schrooten, Milko Sobesky, Mathieu Nacher

### ► To cite this version:

Claire Cropet, Philippe Abboud, Emilie Mosnier, Loïc Epelboin, Félix Djossou, et al.. Relationship between influenza and dengue outbreaks, and subsequent bacterial sepsis in French Guiana: A time series analysis. *Journal of Public Health Research*, 2021, 10 (1), pp.1768. 10.4081/jphr.2021.1768 . inserm-03315292

**HAL Id: inserm-03315292**

**<https://inserm.hal.science/inserm-03315292>**

Submitted on 5 Aug 2021

**HAL** is a multi-disciplinary open access archive for the deposit and dissemination of scientific research documents, whether they are published or not. The documents may come from teaching and research institutions in France or abroad, or from public or private research centers.

L'archive ouverte pluridisciplinaire **HAL**, est destinée au dépôt et à la diffusion de documents scientifiques de niveau recherche, publiés ou non, émanant des établissements d'enseignement et de recherche français ou étrangers, des laboratoires publics ou privés.

## Article

# Relationship between influenza and dengue outbreaks, and subsequent bacterial sepsis in French Guiana: A time series analysis

Claire Cropet,<sup>1</sup> Philippe Abboud,<sup>2</sup> Emilie Mosnier,<sup>2</sup> Loïc Epelboin,<sup>2</sup> Félix Djossou,<sup>2</sup> Ward Schrooten,<sup>3</sup> Milko Sobesky,<sup>3</sup> Mathieu Nacher<sup>1</sup>

<sup>1</sup>Centre d'Investigation Clinique Antilles Guyane, CIC INSERM 1424; <sup>2</sup>Unité des Maladies Infectieuses et Tropicales; <sup>3</sup>Département d'Information Médicale, Centre Hospitalier Andrée Rosemon, Cayenne, French Guiana

## Abstract

**Background:** Influenza has been shown to increase the risk for severe bacterial infection, in the tropics the seasonality of influenza epidemics is less marked, and this may not be the case. Dengue is often followed by prolonged asthenia and some physicians hypothesized increased susceptibility to infections based on anecdotal observations.

**Design and Methods:** Time series of influenza and dengue surveillance were confronted bacterial sepsis admissions to test the hypotheses. Monthly surveillance data on influenza and dengue and aggregated sepsis data in Cayenne hospital were matched between 24/10/2007 and 27/09/2016. An ARIMA (1,0,1) model was used.

**Results:** The series of the number of monthly cases of sepsis was positively associated with the monthly number of cases of influenza at time  $t$  ( $\beta=0.001$ ,  $p=0.0359$ ). Forecasts were imperfectly correlated with sepsis since influenza is not the only risk factor for sepsis. None of the ARIMA models showed a significant link between the dengue series and the sepsis series.

**Conclusions:** There was thus no link between dengue epidemics and sepsis, but it was estimated that for every 1,000 cases of flu there was one additional case of sepsis. In this tropical setting, influenza was highly seasonal, and improved vaccination coverage could have benefits on sepsis.

## Introduction

Coinfections by different pathogens lead to agonistic or antagonistic consequences depending on the agents involved. Epidemiological and experimental evidence show that prior respiratory viruses pave the way for invasive bacterial infections. Prior viral infections may enhance adherence, colonization and invasion by bacterial pathogens in many different ways: Physical damage to the respiratory epithelium and function, ciliary clearance of bacteria, and bacterial adherence to injured tissues.<sup>1</sup>

Immunopathology also facilitates bacterial disease: Measles, for example, reduces the ability to mount an effective immune response against bacterial pathogens; *in vitro*, this translates in alterations of lymphoproliferative responses, cytokine profiles, and antigen-presentation; *in vivo* this translates in lymphopenia, suppressed Mantoux responses, and impaired vaccine efficacy.<sup>2</sup> Influenza leads to neutrophil dysfunction, IL10-mediated immunosuppression, a pulmonary NK cell response, an IFN gamma-mediated macrophage function depression and macrophage desensitization to bacterial ligand-triggered Toll-like receptors (TLR) signaling. These examples illustrate the complexity of the mechanisms underpinning the adverse outcomes of successive or simultaneous infections. The temporal sequence of the respective infections may also modulate the nature and intensity of the immune response, and promote severe immunopathology leading to sepsis.

Dengue fever is an arthropod borne viral disease which leads to large epidemics that often overwhelm health services. In a small fraction of cases, life-threatening severe forms of dengue occur with bleeding manifestations or capillary leakage.<sup>3</sup> Although acute symptoms often recede within a week, a large number of persons however complain of post dengue exhaustion which may persist for weeks after the acute episode. The pathophysiology of dengue is still incompletely understood but it leads to complex immune phenomena.<sup>4</sup>

In the present study, we hypothesized that dengue may lead to transient immunosuppression which could increase the risk of subsequent bacterial infections. Several studies have shown that influenza increases the risk for severe bacterial infection.<sup>5</sup> These studies mostly took place in temperate zones. In the tropics the seasonality of influenza epidemics is less marked, the air temperature and virus aerosolization may not be followed by the same consequences, notably in terms of severe bacterial pneumonia.<sup>5-7</sup>

Therefore, we confronted time series of influenza surveillance, Dengue surveillance and admissions in Cayenne hospital for bacterial sepsis to look for any statistical relationship between these viral epidemics and subsequent bacterial sepsis.

### Significance for public health

*Simultaneous infections may have complex consequences ranging from synergistic, neutral or antagonistic. Dengue fever and influenza cause repeated epidemics and may have consequences on the host's immune response. Hypothesizing that an infection by dengue or influenza could increase the risk of bacterial infection we showed that there was no relation between dengue and sepsis, but that there was a relation between influenza and sepsis. Despite the tropical setting of French Guiana, the highly seasonal pattern of influenza suggests the vaccine reimbursement window should be extended.*

## Design and Methods

The study was retrospective and used data sets collected between 24/10/2007 and 27/09/2016.

### Influenza dengue data

The surveillance data was obtained from the CIRE Antilles Guyane (Interregional cell for epidemiology) which is responsible for the monitoring of epidemic diseases and records suspected and confirmed cases on a weekly basis from reference laboratories and a sentinel network of clinicians. The CIRE Antilles Guyane is part of the Institut National de Santé Publique France and covers all the territory of French Guiana. Surveillance data included laboratory confirmed data and also a sentinel network of physicians who report clinical cases in an epidemic context (ARAVEG, Centres Délocalisés de Prévention et de Soins). The epidemic is defined by confirmed cases, but during an epidemic the sentinel clinical data has very good predictive value. This surveillance data is used for the health authorities' response and allows them to declare a state of epidemic and unfold appropriate measures. Aggregated sepsis data in Cayenne hospital were collected from the hospital medical information system (PMSI, CORA software). The database was queried using the sepsis ICD codes A390, A392, A400, A401, A402, A403, A408, A409, A410, A411, A412, A413, A414, A415, A418, A419 (Meningococcal meningitis, Acute meningococemia, Streptococcal sepsis, other sepsis (sepsis due to *Staphylococcus aureus*, sepsis due to other specified staphylococcus, sepsis due to unspecified staphylococcus, sepsis due to *Hemophilus influenzae*, sepsis due to anaerobes, sepsis due to other Gram-negative organisms, Gram-negative sepsis, unspecified)).

### Sepsis data

These codes were pooled in a single "sepsis" variable, which was present or absent, and was a single value event if some patients could in theory have 2 distinct ICD codes. Cayenne hospital is the French Guyana's reference hospital, the only one with an Intensive Care Unit.

### Data analysis

The collection of influenza, dengue, and sepsis data at monthly intervals is by definition a time series. Time series were first plotted to look for macroscopic trends. Since there can be seasonal variations, and increasing and decreasing trends that can lead to erroneous interpretations of correlations, the analysis first removes such variations, hence obtaining stationary data from which it can try to accurately model the explanatory variables and forecast future values. Then Auto Regressive Integrated Moving Average (ARIMA) models [Box and Jenkins, 1976] were used to look for a temporal relation between influenza and dengue epidemics, and the number of cases of sepsis. ARIMA models allow modeling time series taking into account potential residual autocorrelations under the hypothesis that each measure may be correlated to the previous ones. Thus ARIMA models allow combining three types of temporal processes, the contribution of each being specified in the notation  $ARIMA(p,d,q)$ , where  $p$  is the order of the autoregressive process  $AR(p)$ ,  $d$  the integrated part corresponding to the degree of differencing  $I(d)$ , and  $q$  the order of the moving average model  $MA(q)$ . Multiplicative seasonal ARIMA is applied to series of a similar phenomenon that is repeated through time. In addition to the initial parameters, seasonal parameters for a specified lag must thus be estimated. As for simple ARIMA they are: seasonal autoregressive ( $ps$ ), seasonal differencing ( $ds$ ), and seasonal mov-

ing average ( $qs$ ) parameters. Thus an ARIMA model including a seasonal trend is specified as  $ARIMA(p,d,q)(ps,ds,qs)$ .

### Model fitting

*Identification stage* for the sepsis series - Based on a descriptive analysis (plots) of the monthly number of sepsis cases and of the series' autocorrelation (ACF) and partial autocorrelation functions (PACF), different ARIMA models  $(p,d,q)(ps,ds,qs)$  were tested for the sepsis series.

*Estimation and diagnostic checking stage* for the sepsis series - Models with significant parameters at the 10% were selected for the final stage. The Ljung Box Q test was used to check the non-autocorrelation of residuals of the selected models. Normality was examined graphically based on the histogram of residuals and on the normality plot.

*Final stage* - Lags of 0 and 1 month of the series of monthly values of influenza was subsequently incorporated in the previous selected models in order to identify an eventual impact of influenza on the number of sepsis cases. Potential final models included significant parameters at the 10% level. The Ljung-Box Q test, the residuals histogram and the normality plot were used to confirm that the residual series of the models were Gaussian white noise. Akaike's Information Criterion (AIC), the principle of parsimony, the control of the model variance and the quality of previsions were the performance criteria used to ultimately decide for the final model. A similar reasoning was used for dengue.

## Results

### Description of the different series

The monthly number of suspected influenza cases and sepsis over the study period are shown in Figure 1, which shows apparent, but nonsystematic simultaneous peaks of influenza and sepsis. Overall, 24/10/2007 and 27/09/2016, there were 163,767 cases of influenza and 68,901 cases of dengue reported by the sentinel network, and 1,808 cases of sepsis. Data show that except for year 2008, influenza outbreak occurred every year. The magnitude of the epidemics was highly variable across years: a major peak was observed in year 2009 with up to 7000 cases in September. Years 2012 and 2014 also recorded important epidemics. The outbreaks appeared more moderate for other years. The period of influenza activity was also variable across years; thus, though in most cases an intense activity is observed during the first months of the years. Time series of sepsis showed a mean number of 14 admissions in hospital for sepsis per month, varying from 2 to 37 monthly cases.

The monthly number of suspected dengue cases and sepsis over the study period are shown in Figure 2, highlighting the 3 dengue epidemics of 2009, 2010 and 2013, with up to 2,600, 1,500 and 2,800 monthly cases identified, respectively. The series description does not reveal any trend for a correlation between dengue outbreaks and a subsequent increase in the number of sepsis cases.

### ARIMA modeling of sepsis

The identification stage allowed testing different models among which two were retained following the estimation and diagnostic stage:  $ARIMA(2,0,0)$  and  $ARIMA(1,0,1)$ . The fit of the two selected models was correct with parameters that were all significant below 5%, uncorrelated normally distributed residuals. These two models were thus used to test influenza and dengue as explanatory variables of sepsis.

### Sepsis and influenza

Figure 3 shows the cross-correlations between sepsis and influenza series with significant correlations at lags 0 and 1 month, which was judged to be clinically pertinent given the local mucous membrane alterations caused by influenza.<sup>8</sup> From each of the two previously detailed models of the sepsis series, two new models were declined: one including influenza at time  $t$  as input series and

one including influenza at time  $t-1$ . In all four models influenza was significantly associated with sepsis at the 5% significance level, confirming a correlation between the influenza time series and the sepsis time series. The final model selected was an  $ARIMA(1,0,1)+ influenza(t)$ . Estimates of the model are shown in Table 1. The series of the number of monthly cases of sepsis was positively associated with the monthly number of cases of influen-

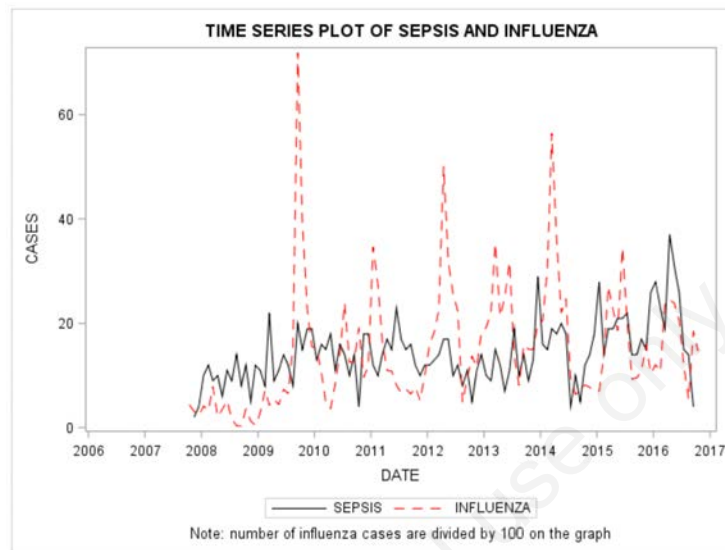


Figure 1. Time series plot of influenza and sepsis showing apparent, but nonsystematic simultaneous peaks of influenza and sepsis.

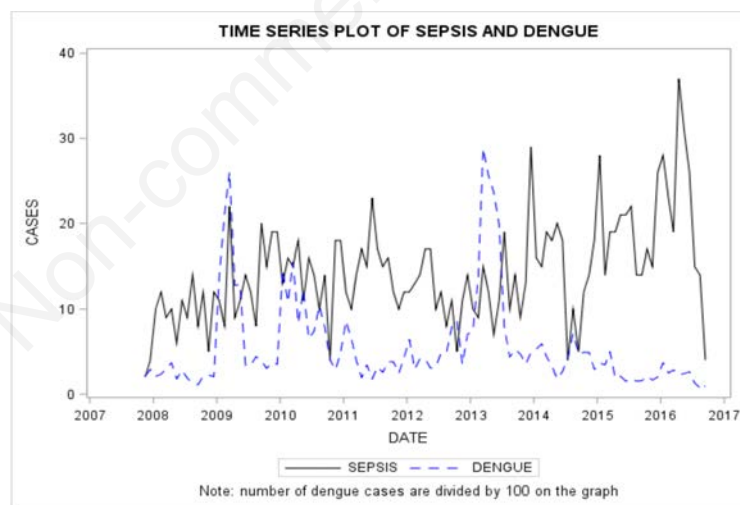


Figure 2. Monthly number of suspected dengue cases and sepsis.

Table 1. Estimates of the  $ARIMA(1,0,1)$  model +  $influenza(t)$ .

Parameter	Estimate	Conditional Least Squares Estimation			Lag	Variable	Shift
		SE	t value	Approx Pr >  t			
MU	12.11536	1.44390	8.39	<0.0001	0	nb_cas_sepsis	0
MA1,1	0.42668	0.18353	2.32	0.0220	1	nb_cas_sepsis	0
AR1,1	0.77300	0.12604	6.13	<0.0001	1	nb_cas_sepsis	0
NUM1	0.0010853	0.0005105	2.13	0.0359	0	nb_cas_grippe	0

za at time  $t$  ( $\beta=0.001, p=0.0359$ ). The  $\beta$  coefficient of the influenza series thus translated in an additional case of sepsis out of every 1000 cases of influenza.

Figure 4 shows the observed number of sepsis cases in regard to the predicted number of sepsis cases according to the ARIMA model with influenza. Forecasts were imperfectly correlated with sepsis.

### Sepsis and dengue

We integrated the dengue series to the four initial sepsis mod-

els testing lags 0, 1 and 3. None of the models showed a significant link between the dengue series and the sepsis series.

Figure 5 shows the cross-correlations between the dengue and the sepsis time series. The only significant correlations appeared for very long lags that did not seem biologically plausible in terms of incubation of diseases and their temporal overlap. Thus, both the descriptive, cross-correlation and modeling approaches led to coherent results which did not show a correlation between the two series.

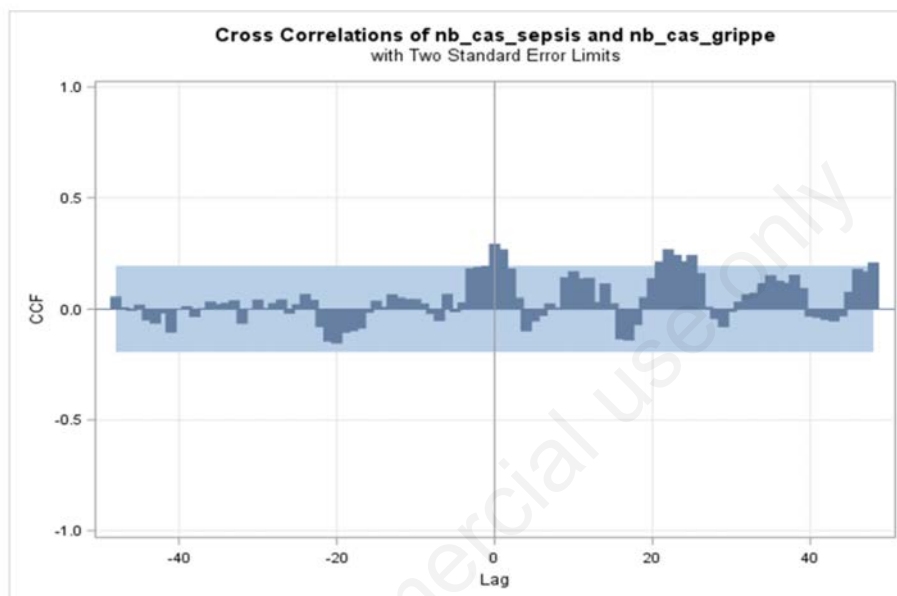


Figure 3. Cross-correlations between sepsis and influenza series with significant correlations at lags 0 and 1 month.

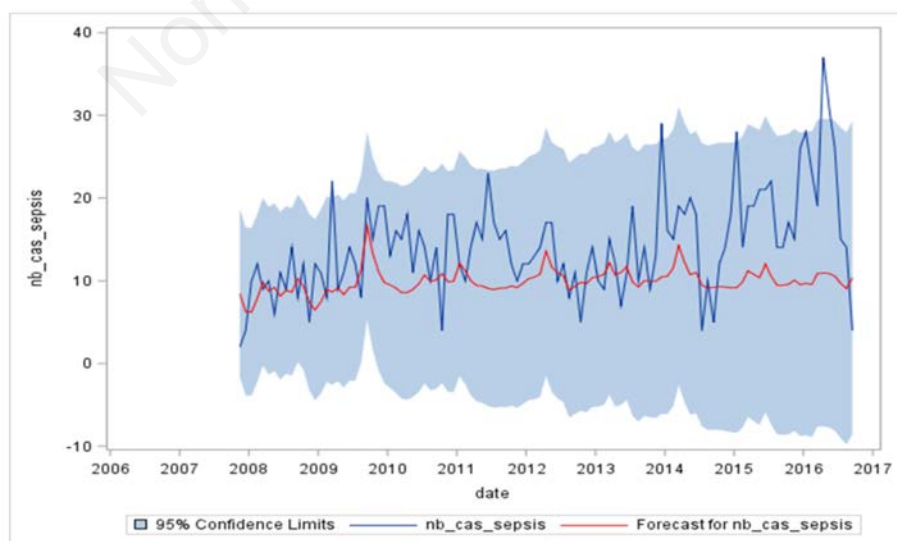


Figure 4. Number of sepsis cases in regards to the predicted number of sepsis cases according to the ARIMA model with influenza.

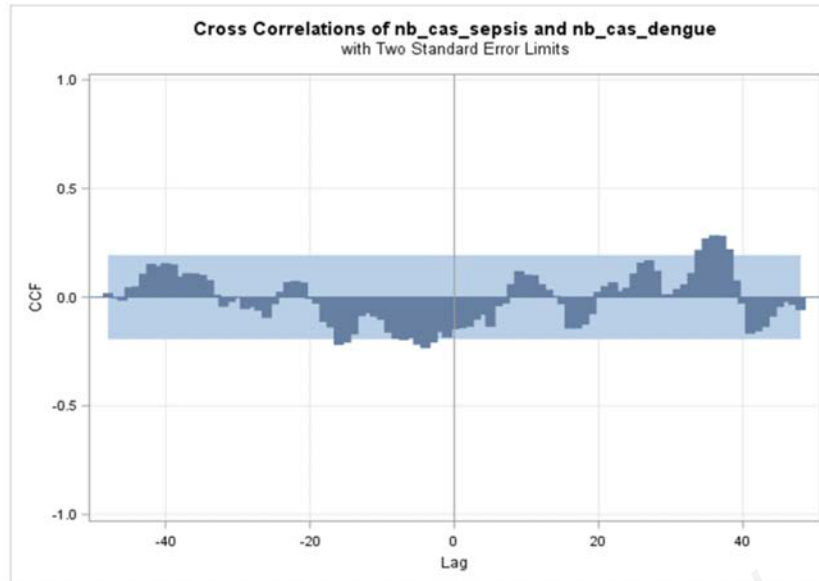


Figure 5. Cross-correlations between the dengue and the sepsis time series.

## Discussion

In interpandemic periods, there are an estimated 1 billion cases of flu, 3-5 million cases of severe illness, and 300,000-500,000 deaths, each year, worldwide.<sup>9</sup> A number of studies have shown that a large proportion of *influenza* pneumonia in fact results from a synergy between the influenza virus and *S. pneumoniae*.<sup>8,10</sup> The influenza virus increases colonization of the respiratory tract by *Streptococcus pneumoniae* which then facilitates its invasion and the development of pneumonia. This may also occur for other bacteria such as *H. influenzae* or *Staphylococcus aureus*.<sup>1,11-14</sup> Influenza A infections can also have a significant influence on the risk of subsequent meningococcal meningitis<sup>15-19</sup> with variable strength for different influenza subtypes.

Here we observed significant temporal relationships between influenza epidemics and the number of cases of sepsis hospitalized in the reference hospital of French Guiana. Despite being close to the equator, influenza seasonality was marked, presumably because of the close link with mainland France where influenza epidemics often affect air travelers to French Guiana who then propagate the epidemic locally.<sup>20</sup> Although the population of French Guiana is small, the output ARIMA model estimates approximately one additional case of sepsis out of every 1,000 cases of influenza which during an epidemic is not negligible. Therefore, vaccination against seasonal influenza could have non negligible benefits in reducing the number of cases of sepsis. The vaccine for the northern hemisphere is effective in French Guiana, however the timing and the shape of the epidemic are different from what is observed in mainland France.<sup>20</sup> On average influenza epidemics in French Guiana last 22 weeks whereas in mainland France they last 9 weeks.<sup>20</sup> The onset of the epidemic usually

occurs 4 weeks after the beginning of the epidemic in mainland France. However, vaccine reimbursement policy only extends until December 31 of a given year. This is likely to limit the number of persons vaccinated and given the 1 sepsis per 1000 influenza cases observed here, extending reimbursement of the vaccine after December may allow benefits on sepsis.<sup>14</sup> For dengue, after observing a case of histoplasmosis after an episode of dengue fever, the initial hypothesis put forward from the bedside was that some patients developed other infections after dengue. This hypothesis was not supported by the available data. Therefore, post dengue “immunosuppression” does not seem to have any consequences on subsequent sepsis. The limitations of the present study were possibly the insufficient time span and low patient numbers given the small population of French Guiana which could have masked less obvious interactions. In addition, the sepsis definition was broad, notably because of the small patient numbers when looking at specific diagnoses. The influenza and dengue cases were clinical suspicions which may not have been always accurate. However, they originated from a sentinel network working in close relation to the Health authorities and French Guiana’s Pasteur Institutes National Reference Laboratory for arboviruses and influenza. The predicted positive value of the criteria for defining suspected cases by the sentinel network in a proven epidemic context is high, therefore we are confident that the time series reflected the evolution of the studied epidemics.<sup>21</sup>

In conclusion, contrarily to our hypothesis there was no link between dengue epidemics and sepsis. As observed elsewhere there was a significant link between flu epidemics and sepsis. The flu epidemics were highly seasonal, and it was estimated that for every 1,000 cases of flu there was one additional case of sepsis. In this tropical setting, influenza was highly seasonal, and improved vaccination coverage could have benefits on sepsis.

**Correspondence:** Mathieu Nacher, CIC INSERM 1424, Centre Hospitalier Andrée Rosemon, 97300 Cayenne, French Guiana. E-mail mathieu.nacher66@gmail.com

**Key words:** Influenza; dengue; time series; sepsis; French Guiana.

**Contributions:** Research question: MN, PA; design: MN; data curation: WS, MS, CC; analysis CC; writing: MN; editing: CC, PA, EM, LE, FD, WS, MS. All the authors have read and approved the final version of the manuscript and agreed to be accountable for all aspects of the work.

**Conflict of interest:** The authors declare that they have no competing interests, and all authors confirm accuracy.

**Acknowledgements:** Antoine Enfissi from Pasteur institute and Vanessa Ardillon from the CIRE Antilles Guyane for surveillance data.

**Ethics approval:** The study used anonymous aggregated data which does not require Ethical approval.

**Availability of data and materials:** The data can be made available upon reasonable request after approval from the Commission Nationale Informatique et Libertés.

Received for publication: 3 April 2020.

Accepted for publication: 26 August 2020.

©Copyright: the Author(s), 2021

Licensee PAGEPress, Italy

Journal of Public Health Research 2021;10:1768

doi:10.4081/jphr.2021.1768

This work is licensed under a Creative Commons Attribution NonCommercial 4.0 License (CC BY-NC 4.0).

## References

- Hament J-M, Kimpen JL, Fleer A, Wolfs TF. Respiratory viral infection predisposing for bacterial disease: a concise review. *FEMS Immunol Med Microbiol* 1999;26:189-95.
- de Vries RD, Mesman AW, Geijtenbeek TB, et al. The pathogenesis of measles. *Curr Opin Virol* 2012;2:248-55.
- Halstead SB. Dengue. *Lancet* 2007;370:1644-52.
- Pagliari C, Quaresma JAS, Fernandes ER, et al. Immunopathogenesis of dengue hemorrhagic fever: contribution to the study of human liver lesions. *J Med Virol* 2014;86:1193-97.
- Hirve S, Lambach P, Paget J, et al. Seasonal influenza vaccine policy, use and effectiveness in the tropics and subtropics—a systematic literature review. *Influenza Other Respir Viruses* 2016;10:254-67.
- Lowen AC, Mubareka S, Steel J, Palese P. Influenza virus transmission is dependent on relative humidity and temperature. *PLoS Pathog* 2007;3:1470-6.
- Lowen AC, Steel J. Roles of humidity and temperature in shaping influenza seasonality. *J Virol* 2014;88:7692-5.
- Siegel SJ, Roche AM, Weiser JN. Influenza promotes pneumococcal growth during coinfection by providing host sialylated substrates as a nutrient source. *Cell Host Microbe* 2014;16:55-67.
- WHO. Influenza. World Health Organization. Available from: <http://www.who.int/immunization/diseases/influenza/en/>
- Grijalva CG, Griffin MR, Edwards KM, et al. The role of influenza and parainfluenza infections in nasopharyngeal pneumococcal acquisition among young children. *Clin Infect Dis* 2014;58:1369-76.
- Finelli L, Fiore A, Dhara R, et al. Influenza-associated pediatric mortality in the United States: increase of *Staphylococcus aureus* coinfection. *Pediatrics* 2008;122:805-11.
- Lee LN, Dias P, Han D, et al. A mouse model of lethal synergism between influenza virus and *Haemophilus influenzae*. *Am J Pathol* 2010;176:800-11.
- Mulder JR. *Haemophilus influenzae* and influenza virus in relation to bronchitis. *J Pathol Bacteriol* 1940;50:317-22.
- Robinson KM, Lee B, Scheller EV, et al. The role of IL-27 in susceptibility to post-influenza *Staphylococcus aureus* pneumonia. *Respir Res* 2015;16:1-12.
- Rameix-Welti M-A, Zarantonelli ML, Giorgini D, et al. Influenza A virus neuraminidase enhances meningococcal adhesion to epithelial cells through interaction with sialic acid-containing meningococcal capsules. *Infect Immun* 2009;77:3588-95.
- Jensen ES, Lundbye-Christensen S, Samuelsson S, et al. A 20-year ecological study of the temporal association between influenza and meningococcal disease. *Eur J Epidemiol* 2004;19:181-7.
- Jacobs JH, Viboud C, Tchetgen ET, et al. The association of meningococcal disease with influenza in the United States, 1989–2009. *PLoS One* 2014;9:e107486.
- Cartwright KAV, Jones DM, Kaczmarek E, et al. Influenza A and meningococcal disease. *Lancet* 1991;338:554-7.
- Hubert B, Watier L, Garnerin P, Richardson S. Meningococcal disease and influenza-like syndrome: a new approach to an old question. *J Infect Dis* 1992;166:542-5.
- Agence Regionale de la Santé de Guyane. Epidemiological and virological description of influenza epidemics in French Guiana: reflecting on the vaccination calendar. Agence Regionale de la Santé de Guyane.
- Boivin G, Hardy I, Tellier G, Maziade J. Predicting influenza infections during epidemics with use of a clinical case definition. *Clin Infect Dis* 2000;31:1166–9.