



HAL
open science

Association between FIASMAs and Reduced Risk of Intubation or Death in Individuals Hospitalized for Severe COVID-19: an observational multicenter study.

Nicolas Hoertel, Marina Sánchez-Rico, Erich Gulbins, Johannes Kornhuber, Alexander Carpinteiro, Eric J Lenze, Angela M Reiersen, Miriam Abellán, Pedro de La Muela, Raphaël Vernet, et al.

► To cite this version:

Nicolas Hoertel, Marina Sánchez-Rico, Erich Gulbins, Johannes Kornhuber, Alexander Carpinteiro, et al.. Association between FIASMAs and Reduced Risk of Intubation or Death in Individuals Hospitalized for Severe COVID-19: an observational multicenter study.. *Clinical Pharmacology and Therapeutics*, 2021, Online ahead of print. 10.1002/CPT.2317 . inserm-03248408

HAL Id: inserm-03248408

<https://inserm.hal.science/inserm-03248408v1>

Submitted on 3 Jun 2021

HAL is a multi-disciplinary open access archive for the deposit and dissemination of scientific research documents, whether they are published or not. The documents may come from teaching and research institutions in France or abroad, or from public or private research centers.

L'archive ouverte pluridisciplinaire **HAL**, est destinée au dépôt et à la diffusion de documents scientifiques de niveau recherche, publiés ou non, émanant des établissements d'enseignement et de recherche français ou étrangers, des laboratoires publics ou privés.

Word count (text): 3887

Word count (abstract): 249

Word count (study highlights): 120

Figures: 3

Tables: 3

References: 50

**Association between FIASMAs and Reduced Risk of Intubation or Death in Individuals
Hospitalized for Severe COVID-19: an observational multicenter study**

Running title: FIASMAs and reduced risk of Intubation or Death in severe COVID-19

Nicolas HOERTEL, M.D., M.P.H., Ph.D.,¹

Marina SÁNCHEZ-RICO, M.P.H.,^{1,2}

Erich GULBINS, M.D., Ph.D.,³

Johannes KORNHUBER, M.D.,⁴

Alexander CARPINTEIRO, M.D.,^{3,5}

Eric J. LENZE, M.D.,⁶

Angela M. REIERSEN, M.D., M.P.E.,⁶

Miriam ABELLÁN, M.P.H.,¹

Pedro de la MUELA, M.P.H.,^{1,2}

Raphaël VERNET, M.D.,⁷

Carlos BLANCO, M.D., Ph.D.,⁸

Céline COUGOULE, Ph.D.,⁹

Nathanaël BEEKER, Ph.D.,¹⁰

Antoine NEURAZ, Ph.D.,^{11,12}

Philip GORWOOD, M.D., Ph.D.,¹³

Jesús M. ALVARADO, Ph.D.,²

Pierre MENETON, M.D., Ph.D.,¹⁴

Frédéric LIMOSIN, M.D., Ph.D.,¹

On behalf of

**AP-HP / Université de Paris / INSERM COVID-19 research collaboration, AP-
HP COVID CDR Initiative, and “Entrepôt de Données de Santé” AP-HP Consortium**

1. Université de Paris, Assistance Publique-Hopitaux de Paris, Hôpital Corentin-Celton, DMU Psychiatrie et Addictologie, Département de Psychiatrie, INSERM, Institut de Psychiatrie et Neurosciences de Paris (IPNP), UMR_S1266, Issy-les-Moulineaux, France.
2. Universidad Complutense de Madrid, Department of Psychobiology & Behavioural Sciences Methods, Faculty of Psychology, Campus de Somosaguas, Pozuelo de Alarcón, Madrid, Spain.
3. Institute for Molecular Biology, University Medicine Essen, University of Duisburg-Essen, Essen, Germany.
4. Department of Psychiatry and Psychotherapy, University Hospital, Friedrich-Alexander-University of Erlangen-Nuremberg, Erlangen, Germany.
5. Department of Hematology and Stem Cell Transplantation, University Hospital Essen, University of Duisburg-Essen, Essen, Germany.
6. Department of Psychiatry, Washington University in St. Louis School of Medicine, St. Louis, Missouri, USA.
7. Assistance Publique-Hopitaux de Paris. Centre-Université de Paris, Hôpital Européen Georges Pompidou, Medical Informatics, Biostatistics and Public Health Department, Paris, France.
8. Division of Epidemiology, Services and Prevention Research, National Institute on Drug Abuse, North Bethesda, USA.
9. Institut de Pharmacologie et de Biologie Structurale, IPBS, Université de Toulouse, Toulouse, France.
10. Assistance Publique-Hopitaux de Paris, Unité de Recherche clinique, Hopital Cochin, Paris, France.
11. INSERM, UMR_S 1138, Cordeliers Research Center, Université de Paris, Paris, France.
12. Assistance Publique-Hopitaux de Paris. Centre-Université de Paris, Department of Medical Informatics, Necker-Enfants Malades Hospital, Paris, France.
13. Université de Paris, INSERM, U1266 (Institute of Psychiatry and Neuroscience of Paris), F-75006, Paris, France.
14. INSERM U1142 LIMICS, UMRS 1142, Sorbonne Universities, UPMC University of Paris 06, University of Paris 13, Paris, France.

Corresponding author

Nicolas Hoertel, M.D., M.P.H., Ph.D.,

Corentin Celton Hospital, AP-HP.Centre, Paris University,

4 parvis Corentin Celton; 92130 Issy-les-Moulineaux, France

Phone: 0033 (0) 1 58 00 44 21

Fax: 0033 (0) 1 58 00 44 53

Email: nico.hoertel@yahoo.fr / nicolas.hoertel@aphp.fr

Conflict of Interest statement: N.H., M.S.R., M.A., P.d.l.M., E.G., J.K., A.C., and F.L. are inventors on a patent application related to methods of treating COVID-19, filled by Assistance Publique – Hopitaux de Paris in France. N.H. has received personal fees and non-financial support from Lundbeck, outside the submitted work. F.L. has received speaker and consulting fees from Janssen-Cilag, Euthérapie-Servier, and Lundbeck, outside the submitted work. E.L. has received grant support (non-federal) from COVID Early Treatment Fund, Mercatus Center Emergent Ventures, the Skoll Foundation, the Taylor Family Institute for Innovative Psychiatric Research, the Center for Brain Research in Mood Disorders, the Patient-Centered Outcomes Research Institute, Janssen, and the Barnes Jewish Foundation, and has received consulting fees from Janssen and Jazz Pharmaceuticals. A.R. has received grant or research support from the McDonnell Center for Systems Neuroscience, the McDonnell Center for Cellular and Molecular Neurobiology, and the Taylor Family Institute for Innovative Psychiatric Research. A.R. and E.L. are inventors on a patent application related to methods of treating COVID-19, which was filed by Washington University in St. Louis. Other authors declare no conflict of interest related to this work.

Funding source: This work did not receive any external funding.

Key words: COVID-19; SARS-CoV-2; FIASMA; medications; treatment; acid sphingomyelinase; ceramide; intubation; mortality.

STUDY HIGHLIGHTS

- What is the current knowledge on the topic?

Several medications commonly used for a number of medical conditions share a property of functional inhibition of acid sphingomyelinase (ASM), or FIASMA. Preclinical and clinical evidence suggest that the ASM/ceramide system may be central to SARS-CoV-2 infection.

- What question did this study address?

Is there an association between FIASMA medication use and the composite outcome of intubation or death in patients hospitalized for severe COVID-19?

- What does this study add to our knowledge?

Taking a FIASMA medication was associated with reduced likelihood of intubation or death in analyses adjusted for sociodemographic characteristics and medical comorbidities.

- How might this change clinical pharmacology or translational science?

These results show the potential importance of the ASM/ceramide system as a treatment target in COVID-19 and support the continuation of FIASMA medications in patients with COVID-19. Double-blind controlled randomized clinical trials of these medications for COVID-19 are needed.

ABSTRACT

Several medications commonly used for a number of medical conditions share a property of functional inhibition of acid sphingomyelinase (ASM), or FIASMA. Preclinical and clinical evidence suggest that the (ASM)/ceramide system may be central to SARS-CoV-2 infection. We examined the potential usefulness of FIASMA use among patients hospitalized for severe COVID-19 in an observational multicenter study conducted at Greater Paris University hospitals. Of 2,846 adult patients hospitalized for severe COVID-19, 277 (9.7%) were taking a FIASMA medication at the time of their hospital admission. The primary endpoint was a composite of intubation and/or death. We compared this endpoint between patients taking vs. not taking a FIASMA medication in time-to-event analyses adjusted for sociodemographic characteristics and medical comorbidities. The primary analysis was a Cox regression model with inverse probability weighting (IPW). Over a mean follow-up of 9.2 days (SD=12.5), the primary endpoint occurred in 104 patients (37.5%) receiving a FIASMA medication, and 1,060 patients (41.4%) who did not. Despite being significantly and substantially associated with older age and greater medical severity, FIASMA medication use was significantly associated with reduced likelihood of intubation or death in both crude (HR=0.71; 95%CI=0.58-0.87; $p<0.001$) and primary IPW (HR=0.58; 95%CI=0.46-0.72; $p<0.001$) analyses. This association remained significant in multiple sensitivity analyses and was not specific to one particular FIASMA class or medication. These results show the potential importance of the ASM/ceramide system in COVID-19 and support the continuation of FIASMA medications in these patients. Double-blind controlled randomized clinical trials of these medications for COVID-19 are needed.

INTRODUCTION

Global spread of the novel coronavirus SARS-CoV-2 and its variants, the causative agents of coronavirus disease 2019 (COVID-19), has created an unprecedented infectious disease crisis worldwide.¹⁻⁴ Although the availability of vaccines has raised hope for a decline of the pandemic, the search for an effective treatment for patients with COVID-19 among all available medications is still urgently needed.

Several medications commonly used for a number of medical conditions, such as depression or high blood pressure, are functional inhibitors of acid sphingomyelinase (ASM)⁵⁻¹⁰ or FIASMA. FIASMA medications, as detailed in **Table 1**, include for example certain antidepressants (e.g., fluoxetine, fluvoxamine, escitalopram), antihistamine medications (e.g., hydroxyzine, promethazine), antipsychotics (e.g., aripiprazole, chlorpromazine), calcium channel blockers (e.g., amlodipine, bepridil), and mucolytics (e.g., ambroxol).⁵⁻¹⁰

Preclinical evidence indicates that SARS-CoV-2 activates the acid sphingomyelinase (ASM)/ceramide system, resulting in the formation of ceramide-enriched membrane domains that facilitate viral entry and infection by clustering ACE2, the cellular receptor of SARS-CoV-2.⁵ An *in vitro* study⁵ showed that several FIASMA⁶ medications, including fluoxetine and amitriptyline, inhibited ASM and the formation of ceramide-enriched membrane domains, and prevented Vero cells from being infected with SARS-CoV-2. Reconstitution of ceramide in cells treated with antidepressant medications having FIASMA properties restored infection with SARS-CoV-2. In healthy volunteers, oral administration of amitriptyline blocked infection of freshly isolated nasal epithelial cells with SARS-CoV-2.⁵ These preclinical data were confirmed by another study that demonstrated an inhibition of the infection of cultured epithelial cells with SARS-CoV-2 by fluoxetine.¹¹ A scheme of the biological mechanisms proposed by Carpinteiro *et al.*^{5,10} underlying the potential inhibition by FIASMAs of cell infection with SARS-CoV-2 is summarized in **Figure 1**.

Findings from clinical and observational studies are consistent with these preclinical data. First, a randomized double-blind controlled study¹² showed significant protective effects of the FIASMA antidepressant fluvoxamine (N=80) versus placebo (N=72) on COVID-19 disease progression in outpatients (0 of 80 patients in the fluvoxamine group versus 6 of 72 patients in the placebo group; absolute difference, 8.7% [95% CI, 1.8%-16.4%] from survival analysis; log-rank P =0.009). These results were confirmed in an open-label prospective cohort,¹³ in which the incidence of hospitalization was 0% (0 of 65) in patients with COVID-19 who opted to receive fluvoxamine and 12.5% (6 of 48) in those who declined. Second, an observational multicenter retrospective study using data from Greater Paris University Hospitals showed that use of antidepressants, mostly FIASMA antidepressants, and of the FIASMA hydroxyzine, were significantly associated with reduced mortality in patients hospitalized for COVID-19.^{14,15} Third, retrospective clinical investigations among hospitalized COVID-19 patients either elderly (N=77)¹⁶ or with hypertension as the only comorbidity¹⁷ (N=96) showed that the use of amlodipine (a calcium channel blocker¹⁸ and a FIASMA) may be associated with decreased mortality. Taken together, these results suggest that the ASM/ceramide system may provide a useful framework for better understanding SARS-CoV-2 infection and favouring the possible repurposing of FIASMA medications against COVID-19.

To our knowledge, no clinical study to date has examined the potential usefulness of FIASMA medications as a class in patients hospitalized for severe COVID-19. Observational studies of patients with COVID-19 taking medications for other disorders can help to decide which treatment should be prioritized for randomized clinical trials and to minimize the risk for patients of being exposed to potentially ineffective or harmful treatments.

We used data from Greater Paris University Hospitals to examine the association between FIASMA medication use and the composite outcome of intubation or death among patients hospitalized for laboratory-confirmed severe COVID-19. Our primary hypothesis was

that FIASMA medication use would be associated with reduced risk of intubation or death among patients hospitalized for severe COVID-19 in time-to-event analyses adjusting for sociodemographic characteristics and medical comorbidities. Additional exploratory analyses examined whether this association was specific to certain FIASMA classes (e.g., FIASMA antidepressants) or certain individual medications (e.g., fluoxetine or amlodipine).

METHODS

Setting and Cohort Assembly

A multicenter cohort study was conducted at 36 AP-HP hospitals from the beginning of the epidemic in France, i.e. January 24th, until May 1st, 2020.^{14,15,19-21} We included all adults aged 18 years or over who have been hospitalized in these medical centers for severe COVID-19. COVID-19 was ascertained by a positive reverse-transcriptase–polymerase-chain-reaction (RT-PCR) test on nasopharyngeal or oropharyngeal swab specimens. Severe COVID-19 was defined as having at least one of the following criteria at hospital admission : respiratory rate > 24 breaths/min or < 12 breaths/min, resting peripheral capillary oxygen saturation in ambient air < 90% , temperature > 40°C, systolic blood pressure < 100 mm Hg, or high lactate levels>2mmol/L.²²

This observational study using routinely collected data received approval from the Institutional Review Board of the AP-HP clinical data warehouse (decision CSE-20-20_COVID19, IRB00011591, April 8th, 2020). AP-HP clinical Data Warehouse initiatives ensure patient information and informed consent regarding the different approved studies through a transparency portal in accordance with European Regulation on data protection and authorization n°1980120 from National Commission for Information Technology and Civil Liberties (CNIL).

Data sources

AP-HP Health Data Warehouse ('Entrepôt de Données de Santé (EDS)') contains all available clinical data on all inpatient visits for COVID-19 to 36 Greater Paris university hospitals. The data included patient demographic characteristics, vital signs, laboratory test and RT-PCR test results, medication administration data during the hospitalization for COVID-19, current diagnoses, discharge disposition, ventilator use data, and death certificates.

Variables assessed

We obtained the following data for each patient at the time of the hospitalization: sex; age, which was categorized into 4 classes based on the OpenSAFELY study results²⁴ (i.e. 18-50, 51-70, 71-80, 81+); hospital, which was categorized into 4 classes following the administrative clustering of AP-HP hospitals in Paris and its suburbs based on their geographical location (i.e., AP-HP Centre – Paris University, Henri Mondor University Hospitals and at home hospitalization; AP-HP Nord and Hôpitaux Universitaires Paris Seine-Saint-Denis; AP-HP Paris Saclay University; and AP-HP Sorbonne University); obesity, which was defined as having a body mass index higher than 30 kg/m² or an International Statistical Classification of Diseases and Related Health Problems (ICD-10) diagnosis code for obesity (E66.0, E66.1, E66.2, E66.8, E66.9); self-reported current smoking status; and any medication prescribed according to compassionate use or as part of a clinical trial (e.g. hydroxychloroquine, azithromycin, remdesivir, tocilizumab, sarilumab, or dexamethasone). To take into account possible confounding by indication bias for FIASMA medications, we recorded whether patients had any current diagnosis, based on ICD-10 diagnosis codes recorded during the visit, of neoplasms and diseases of the blood (C00-D89); mental disorders (F01-F99); diseases of the nervous system (G00-G99); cardiovascular disorders (I00-I99); respiratory disorders (J00-J99); digestive disorders (K00-K95); dermatological disorders (L00-L99); diseases of the

musculoskeletal system (M00-M99); diseases of the genitourinary system (N00-N99); endocrine disorders (E00-E89); and eye-ear-nose-throat disorders (H00-H95).

All medical notes and prescriptions are computerized in Greater Paris University hospitals. Medications including their dose, frequency, date, and mode of administration were identified from medication administration data or scanned hand-written medical prescriptions, through two deep learning models based on BERT contextual embeddings²⁵, one for the medications and another for their mode of administration. The model was trained on the APmed corpus, a previously annotated dataset for this task. Extracted medications names were then normalized to the Anatomical Therapeutic Chemical (ATC) terminology using approximate string matching.

Medications with functional inhibition effect on acid sphingomyelinase (ASM)

FIASMA medications were defined as having a substantial *in vitro* functional inhibition effect on ASM (i.e., a residual ASM activity lower than 50%), as detailed elsewhere,⁵⁻⁹ and were divided into the following classes according to their Anatomical Therapeutic Chemical (ATC) code:²⁶ FIASMA alimentary tract and metabolism medications (e.g., loperamide); cardiovascular system medications, subdivided into calcium channel blockers (e.g., amlodipine) and other cardiovascular medications (e.g., carvedilol); nervous system medications, subdivided according to ATC codes into psychoanaleptic (e.g., amitriptyline) and psycholeptic medications (e.g., chlorpromazine); and respiratory system medications (e.g., desloratadine).

FIASMA medication use was defined as receiving at least one FIASMA medication within the first 24 hours of hospital admission. To minimize potential confounding effects of late prescription of FIASMA medications, patients who initiated a FIASMA medication more than 24 hours after hospital admission were excluded from the analyses. Patients who received at

study baseline an antipsychotic or a benzodiazepine while being hospitalized in an intensive care unit (ICU), possibly as an aid to oral intubation, were also excluded.

Primary endpoint

Study baseline was defined as the date of hospital admission for COVID-19. The primary endpoint was the occurrence of intubation and/or death. For patients who died after intubation, the timing of the primary endpoint was defined as the time of intubation. Patients without an end-point event had their data censored on May 1st, 2020.

Statistical analysis

We calculated frequencies of all baseline characteristics described above in patients receiving or not receiving a FIASMA medication and compared them using standardized mean differences (SMD). SMD are useful to evaluate between-group differences in baseline characteristic variables independently of their unit of measurement (i.e. for both continuous and categorical variables²⁷⁻²⁹). We considered SMD greater than 0.1 as reflecting significant differences, a threshold recommended for declaring imbalance.²⁸

To examine the association between FIASMA medication use at baseline and the endpoint of intubation or death, we performed Cox proportional-hazards regression models.³⁰ To help account for the nonrandomized prescription of medications and reduce the effects of confounders, the primary analysis used propensity score analysis with inverse probability weighting (IPW).³¹ The individual propensities for receiving a FIASMA medication at baseline were estimated using a multivariable logistic regression model that included sex, age, hospital, obesity, current smoking status, and medical conditions. In the inverse-probability-weighted analyses, the predicted probabilities from the propensity-score models were used to calculate the stabilized inverse-probability-weighting weights. The association between FIASMA

medication use and the endpoint was then estimated using an IPW Cox regression model. In case of non-balanced covariates, an IPW multivariable Cox regression model adjusting for the non-balanced covariates was also performed. Kaplan-Meier curves were performed using the inverse-probability-weighting weights and their pointwise 95% confidence intervals were estimated using the nonparametric bootstrap method.³²

We conducted two sensitivity analyses. First, we performed a multivariable Cox regression model including as covariates the same variables used in the IPW analysis. Second, we used a univariate Cox regression model in a matched analytic sample using a 1:1 ratio, based on the same variables used for the IPW analysis and the multivariable Cox regression analysis. To reduce the effects of confounding, optimal matching was used in order to obtain the smallest average absolute distance across all clinical characteristics between exposed patients and non-exposed matched controls.

We performed four additional exploratory analyses. First, we examined the relationships between each FIASMA class and each individual FIASMA medication with the composite endpoint of intubation or death. Second, we reproduced these analyses while comparing patients receiving any FIASMA medication at baseline to those receiving paracetamol at baseline, to mimic an active comparator, as previously done in several ongoing clinical trials.³³ This analysis sought to address a potential immortal bias, by including in the control group patients who had the same likelihood as those in the FIASMA group to survive at baseline until being prescribed a treatment. Third, because of discrepancies in the potential FIASMA *in vitro* effect of venlafaxine, mirtazapine, and citalopram,^{5,6} we reproduced the main analyses while considering these molecules as FIASMAs, contrary to the main analyses. Finally, we reproduced the main analyses among all patients hospitalized for COVID-19, with and without clinical severity criteria at baseline.

For all associations, we performed residual analyses to assess the fit of the data, check assumptions, including proportional hazards assumption using proportional hazards tests and diagnostics based on weighted residuals,³⁰ and examined the potential influence of outliers. To improve the quality of result reporting, we followed the recommendations of The Strengthening the Reporting of Observational Studies in Epidemiology (STROBE) Initiative. Because our main hypothesis focused on the association between FIASMA medication use at baseline and the composite endpoint of intubation or death, statistical significance was fixed *a priori* at two-sided p-value <0.05. Only if a significant association was found, we planned to perform additional exploratory analyses as described above. All analyses were conducted in R software version 3.6.3 (R Project for Statistical Computing).

RESULTS

Characteristics of the cohort

Of the 17,131 patients hospitalized for COVID-19, ascertained with a positive COVID-19 RT-PCR test, 1,963 patients (11.5%) were excluded because of missing data or young age (i.e. less than 18 years old of age). Of these 15,168 patients, 3,224 (21.3%) met criteria for severe COVID-19 at hospital admission. Of these 3,224 patients, 378 (11.7%) were excluded because they started a FIASMA medication more than 24 hours after hospital admission (N=343) or because they initiated an antipsychotic or a benzodiazepine in an ICU, possibly as an aid for intubation (N=35). Of the remaining 2,846 adult patients, 277 (9.7%) received a FIASMA medication within the first 24 hours of hospitalization, with a mean delay between hospital admission and first FIASMA medication prescription of 0.11 days (SD=0.38; interquartile range (IQR)=0.00-0.19)) (**Figure 2**).

RT-PCR test results were obtained after a median delay of 0.9 days (SD=9.4; IQR=0.5-1.7) from hospital admission date. This median delay was similar (i.e., 0.9 days) in the exposed

(SD=11.4; IQR=0.5-1.4) and non-exposed (SD=9.3; IQR=0.5-1.7) groups. Over a mean follow-up of 9.2 days (SD=12.5; median=6 days; IQR=2-11), 1,168 patients (41.0%) had an end-point event at the time of data cutoff on May 1st, 2020. Among patients who received a FIASMA medication at baseline, the mean follow-up was 12.0 days (SD=12.9, median=8 days; IQR=4-14), while it was of 8.9 days (SD=12.4, median=5 days; IQR=1-11) in those who did not.

All patient characteristics, except for current smoking status, diseases of the musculoskeletal system, and Eye-Ear-Nose-Throat disorders were significantly associated with the endpoint of intubation or death. A multivariable Cox regression model showed that sex, hospital in which the patient was treated, obesity, medications according to compassionate use or as part of a clinical trial, cardiovascular disorders, respiratory disorders, neoplasms and diseases of the blood, other infectious diseases, and diseases of the genitourinary system were significantly and independently associated with the composite risk of intubation or death (**Table S1**).

The distributions of patient characteristics according to FIASMA medication use are shown in **Table 2**. In the full sample, FIASMA medication use at baseline substantially differed according to all patient characteristics, except for medications according to compassionate use or as part of a clinical trial, and the direction of the associations indicated an older age and greater medical severity of patients receiving FIASMA medication at baseline.

In the matched analytic sample and in the full sample after applying the propensity score weights, there were no substantial differences in any characteristic (**Table 2; Figure S1**).

Study endpoint

The endpoint of intubation or death occurred in 104 patients (37.5%) who received a FIASMA medication at baseline and in 1,060 patients (41.4%) who did not. Both the crude unadjusted analysis (HR=0.71; 95%CI=0.58-0.87; p<0.01) and the primary analysis with inverse probability weighting (IPW) (HR=0.58; 95% CI=0.46-0.72; p<0.01) showed a

significant association between FIASMA medication use at baseline and reduced risk of intubation or death (**Figure 3; Table 3**). A post-hoc analysis indicated that we had 80% power in the crude analysis to detect a hazard ratio of at least 0.82 / 1.21.

In sensitivity analyses, the multivariable Cox regression model also showed a significant association (HR=0.66; 95% CI=0.53-0.83; $p<0.01$), as did the univariate Cox regression model in the matched analytic sample using a 1:1 ratio (HR=0.55; 95% CI=0.43-0.73; $p<0.01$) (**Table 3**).

Additional exploratory analyses showed that the use of FIASMA nervous system medications, and specifically FIASMA psychoanaleptic medications, was significantly associated with decreased risk of intubation or death across all analyses (**Table 4 and Table S2**). Using FIASMA cardiovascular system medication, and specifically FIASMA calcium channel blocker medications, was also significantly associated with reduced risk of intubation or death in the primary IPW analysis, multivariable analysis, and the IPW analysis adjusted for unbalanced covariates. Hazard ratios were lower than 1 for most individual FIASMA molecules, but none of them reached statistical significance across all main and sensitivity analyses, except for hydroxyzine and escitalopram (**Table S2**), possibly due to restricted statistical power. Patients receiving any FIASMA medication at baseline, and specifically a FIASMA calcium channel blocker medication, a FIASMA nervous system medication, and specifically a FIASMA psychoanaleptic medication had a significantly reduced risk of intubation or death compared with patients who received paracetamol at baseline (**Table S3**). Reproducing the main analyses while considering venlafaxine, mirtazapine and citalopram as FIASMA antidepressants did not alter the significance of our results (**Table S4**). Finally, including in the main analyses all patients with and without clinical severity criteria at baseline did not alter the significance of our results (**Table S5**).

DISCUSSION

In this multicenter retrospective observational study involving 2,846 adult patients hospitalized for severe COVID-19, we found that FIASMA medication use at hospital admission was significantly and substantially associated with reduced risk of intubation or death, independently of sociodemographic characteristics and medical comorbidities. This association remained significant in multiple sensitivity analyses. Additional exploratory analyses suggest that this association was not explained by one specific FIASMA class or one specific FIASMA medication.

We found that FIASMA medication use among patients hospitalized for severe COVID-19 was significantly and substantially associated with reduced risk of intubation or death, with a 42% risk reduction in the main analysis. This association was not specific to one FIASMA psychotropic class or medication. These findings are in line with prior preclinical^{5,11} and clinical¹⁴⁻¹⁷ evidence that FIASMA antidepressant medications may substantially prevent cells from being infected with SARS-CoV-2 *in vitro*,^{5,11} and that several FIASMA medications, such as fluoxetine, hydroxyzine and amlodipine at their usual respective antidepressant, antihistaminic, and antihypertensive doses, may reduce mortality among patients hospitalized for COVID-19.¹⁴⁻¹⁷

Several other mechanisms could be proposed to explain this association besides the involvement of the ASM/ceramide system.³⁴ First, antiviral effects, i.e. inhibition of viral replication, of FIASMA medications might underlie this relationship, as suggested by *in vitro* studies for fluoxetine,⁵ chlorpromazine,³⁵ and amlodipine.¹⁷ However, inhibition of viral replication was not observed with several other FIASMA medications, including paroxetine and escitalopram.³⁶

Second, several FIASMA medications, such as escitalopram or hydroxyzine, have high affinity for Sigma-1 receptors (S1R),^{37,38} which have been suggested to have potential value in

regulating inflammation by inhibiting cytokine production in COVID-19.³⁹ The S1R has been shown to restrict the endonuclease activity of an Endoplasmic Reticulum (ER) stress sensor called Inositol-Requiring Enzyme1 (IRE1) and to reduce cytokine expression, without inhibiting classical inflammatory pathways.^{12,39} Because several FIASMA medications are S1R agonists in our sample, this mechanism might have overlapped their inhibition effect on ASM. However, when examining the association between the endpoint and several FIASMA medications with low or no affinity for S1R (e.g., amlodipine, paroxetine, duloxetine, and aripiprazole)^{37,40–43}, the main results remained statistically significant (**Table S6**), suggesting that inhibition of ASM could underlie this association independently of S1R.

Finally, this association may be partly mediated by the anti-inflammatory effects of FIASMA medications, which could be explained by inhibition of ASM in endothelial cells and the immune system, and might be independent of Sigma-1 receptors. First, a recent meta-analysis⁴⁴ of studies conducted in individuals with major depressive disorder following antidepressant treatment, mostly including selective serotonin reuptake inhibitors (SSRIs), supports that, overall, antidepressants may be associated with decreased plasma levels of 4 of 16 tested inflammatory mediators, including IL-10, TNF- α , CCL-2, which are associated with COVID-19 severity,⁴⁵ as well as IL-6, which is highly correlated with disease mortality.^{45,46} Second, prior *in vitro* and *in vivo* studies^{47–49} suggest that some antipsychotics may have anti-inflammatory effects via glia activation, but that this activity may not be shared by all antipsychotics. However, this anti-inflammatory effect was observed for both FIASMA antipsychotics (e.g. chlorpromazine) and non-FIASMA ones (e.g., haloperidol and risperidone). If the association between FIASMA psychotropic medication use and reduced risk of intubation or death is confirmed, future studies aiming at disentangling these potentially interrelated mechanisms would be needed.

Our study has several limitations. First, there are two possible major inherent biases in observational studies: unmeasured confounding and confounding by indication. However, in the case of FIASMA medications, including several antidepressants and cardiovascular system medications, confounding by indication may typically result in increased adverse medical outcomes associated with these medications,⁵⁰ not better outcomes as suggested by our findings. We tried to minimize the effects of confounding in several different ways. First, we used an analysis with inverse probability weighting to minimize the effects of confounding by indication,³¹ resulting in non-substantial between-group differences in clinical characteristics (all SMD<0.1) in both the IPW primary analysis and the Cox regression analysis in the matched analytic sample. Second, we performed multiple sensitivity analyses, which showed similar results. Finally, although some amount of unmeasured confounding may remain, our analyses adjusted for numerous potential confounders. Other limitations include missing data for some baseline characteristic variables (i.e., 11.5%), which might be explained by the overwhelming of all hospital units during the COVID-19 peak incidence, and different results might have been observed during a lower COVID-19 incidence period. However, imputation of missing data did not alter the significance of our results (data available on request). Second, inflation of type I error might have occurred in exploratory analyses due to multiple testing. Third, data on several FIASMA medications were not available because no patients hospitalized for severe COVID-19 in AP-HP hospitals received them at study baseline during the first epidemic wave. Fourth, this study cannot establish a causal relationship between FIASMA medication use and reduced risk of intubation or death. Fifth, data to approximate the time to onset or duration of the potential effect of FIASMA medications and data on medications taken by patients prior to their hospital admission were not available. Although this may constitute a bias (i.e. considering patients taking a FIASMA medication just before hospital admission as not taking it instead of excluding them from the analyses), the direction of this bias is likely to be towards the null

hypothesis, as it may have led to underestimate the association between FIASMAs and reduced risk of intubation or mortality by including individuals taking FIASMAs just before hospital admission in the control group. Sixth, data cutoff is nearly a year ago and represents only the first few months of the COVID-19 pandemic. Furthermore, the relatively limited sample size reduced our ability to examine with adequate statistical power each individual FIASMA medication. Future studies would benefit in replicating our analyses while including a greater number of patients hospitalized for severe COVID-19 at a more recent time of the pandemic when care has substantially progressed as compared with its beginning. Finally, despite the multicenter design, our results may not be generalizable to outpatients or other regions.

In conclusion, in this multicenter observational retrospective study, FIASMA medication use was significantly and substantially associated with reduced risk of intubation or death among adult patients hospitalized for severe COVID-19. These findings show the potential importance of the ASM/ceramide system framework in COVID-19 treatment. They also support the continuation of FIASMA medications in patients with COVID-19. Double-blind controlled randomized clinical trials (RCTs) of these medications in patients with COVID-19 are needed, starting with FIASMA molecules such as fluoxetine, fluvoxamine, escitalopram, or hydroxyzine, which have high *in vitro* inhibition effect on ASM and are ease of use, including high safety margin, good tolerability, widespread availability, and low cost such that primary care physicians and other providers could prescribe them as soon as onset of symptoms, if their usefulness against COVID-19 was confirmed in RCTs.

ACKNOWLEDGMENT SECTION

Author Contributions: N.H., M.S.R., and F.L. designed the study; M.S.R., M.A., P.d.l.M and N.H. analyzed the data; R.V. contributed to statistical analyses; N.H. wrote the first draft of the manuscript; M.S.R., E.G., J.K., A.C., E.J.L, A.M.R., M.A., P.d.l.M, R.V., C.B., C.C., N.B., A.N., P.G., J.M.A., and P.M. critically revised the manuscript for scientific content and contributed to the writing of the manuscript.

Data Availability Statement: Data can be available upon request from AP-HP Health Data Warehouse (Entrepôt de Données de Santé (EDS)) at <https://eds.aphp.fr//>.

Disclaimer: The information contained in this study is provided for research purpose and should not be used as a substitute or replacement for diagnosis or treatment recommendations or other clinical decisions or judgment. The views presented in this manuscript are those of the authors and should not be construed to represent the views of any of the sponsoring organizations, agencies, or the National Institute on Drug Abuse or any U.S. Government Agency.

Acknowledgments: The authors warmly thank the EDS APHP Covid consortium integrating the APHP Health Data Warehouse team as well as all the APHP staff and volunteers who contributed to the implementation of the EDS-Covid database and operating solutions for this database. Collaborators of the EDS APHP Covid consortium are: Pierre-Yves ANCEL, Alain BAUCHET, Nathanaël BEEKER, Vincent BENOIT, Mélodie BERNAUX, Ali BELLAMINE, Romain BEY, Aurélie BOURMAUD, Stéphane BREANT, Anita BURGUN, Fabrice CARRAT, Charlotte CAUCHETEUX, Julien CHAMP, Sylvie CORMONT, Christel DANIEL, Julien DUBIEL, Catherine DUCLOAS, Loic ESTEVE, Marie FRANK, Nicolas GARCELON, Alexandre GRAMFORT, Nicolas GRIFFON, Olivier GRISEL, Martin GUILBAUD, Claire HASSEN-KHODJA, François HEMERY, Martin HILKA, Anne Sophie JANNOT, Jerome LAMBERT, Richard LAYESE, Judith LEBLANC, Léo LEBOUTER, Guillaume LEMAITRE, Damien LEPROVOST, Ivan LERNER, Kankoe LEVI SALLAH, Aurélien MAIRE, Marie-France MAMZER, Patricia MARTEL, Arthur MENSCH, Thomas MOREAU, Antoine NEURAZ, Nina ORLOVA, Nicolas PARIS, Bastien RANCE, Hélène RAVERA, Antoine ROZES, Elisa SALAMANCA, Arnaud SANDRIN, Patricia SERRE, Xavier TANNIER, Jean-Marc TRELUYER, Damien VAN GYSEL, Gaël VAROQUAUX, Jill Jen VIE, Maxime WACK, Perceval WAJSBURT, Demian WASSERMANN, Eric ZAPLETAL.

REFERENCES

1. Hoertel, N. *et al.* A stochastic agent-based model of the SARS-CoV-2 epidemic in France. *Nat. Med.* **26**, 1417–1421 (2020).
2. Hoertel, N. *et al.* Facing the COVID-19 epidemic in NYC: a stochastic agent-based model of various intervention strategies. *medRxiv* (2020).doi:10.1101/2020.04.23.20076885
3. Chevance, A. *et al.* Ensuring mental health care during the SARS-CoV-2 epidemic in France: A narrative review. *L'Encephale* **46**, 193–201 (2020).
4. Hoertel, N., Blachier, M., Sánchez-Rico, M., Limosin, F. & Leleu, H. Impact of the timing and adherence to face mask use on the course of the COVID-19 epidemic in France. *J. Travel Med.* **taab016**, (2021).
5. Carpinteiro, A. *et al.* Pharmacological inhibition of acid sphingomyelinase prevents uptake of SARS-CoV-2 by epithelial cells. *Cell Rep. Med.* 100142 (2020).
6. Kornhuber, J. *et al.* Functional Inhibitors of Acid Sphingomyelinase (FIASMA)s: a novel pharmacological group of drugs with broad clinical applications. *Cell. Physiol. Biochem.* **26**, 9–20 (2010).
7. Gulbins, E. *et al.* Acid sphingomyelinase–ceramide system mediates effects of antidepressant drugs. *Nat. Med.* **19**, 934–938 (2013).
8. Kornhuber, J. *et al.* Identification of novel functional inhibitors of acid sphingomyelinase. *PloS One* **6**, e23852 (2011).
9. Kornhuber, J. *et al.* Identification of new functional inhibitors of acid sphingomyelinase using a structure- property- activity relation model. *J. Med. Chem.* **51**, 219–237 (2008).
10. Carpinteiro, A. *et al.* Inhibition of acid sphingomyelinase by ambroxol prevents SARS-CoV-2 entry into epithelial cells. *J. Biol. Chem.* 100701 (2021).doi:10.1016/j.jbc.2021.100701

11. Schloer, S. *et al.* Targeting the endolysosomal host-SARS-CoV-2 interface by clinically licensed functional inhibitors of acid sphingomyelinase (FIASMA) including the antidepressant fluoxetine. *Emerg. Microbes Infect.* **9**, 2245–2255 (2020).
12. Lenze, E. J. *et al.* Fluvoxamine vs Placebo and Clinical Deterioration in Outpatients With Symptomatic COVID-19: A Randomized Clinical Trial. *JAMA* **324**, 2292–2300 (2020).
13. Seftel, D. & Boulware, D. R. Prospective Cohort of Fluvoxamine for Early Treatment of Coronavirus Disease 19. *Open Forum Infect. Dis.* **8**, ofab050 (2021).
14. Hoertel, N. *et al.* Association between antidepressant use and reduced risk of intubation or death in hospitalized patients with COVID-19: results from an observational study. *Mol. Psychiatry* (2021).doi:10.1038/s41380-021-01021-4
15. Hoertel, N. *et al.* Association between Hydroxyzine Use and Reduced Mortality in Patients Hospitalized for Coronavirus Disease 2019: Results from a multicenter observational study. *medRxiv* (2020).doi:10.1101/2020.10.23.20154302
16. Solaimanzadeh, I. Nifedipine and amlodipine are associated with improved mortality and decreased risk for intubation and mechanical ventilation in elderly patients hospitalized for COVID-19. *Cureus* **12**, (2020).
17. Zhang, L.-K. *et al.* Calcium channel blocker amlodipine besylate therapy is associated with reduced case fatality rate of COVID-19 patients with hypertension. *Cell Discov.* **6**, 1–12 (2020).
18. Chouchana, L. *et al.* Association of Antihypertensive Agents with the Risk of In-Hospital Death in Patients with Covid-19. *Cardiovasc. Drugs Ther.* (2021).doi:10.1007/s10557-021-07155-5
19. Hoertel, N. *et al.* Observational study of haloperidol in hospitalized patients with COVID-19. *PLOS ONE* **16**, e0247122 (2021).

20. Hoertel, N. *et al.* Observational Study of Chlorpromazine in Hospitalized Patients with COVID-19. *Clin. Drug Investig.* 1–13 (2021).doi:10.1007/s40261-021-01001-0
21. Hoertel, N. *et al.* Dexamethasone use and Mortality in Hospitalized Patients with Coronavirus Disease 2019: a Multicenter Retrospective Observational Study. *Br. J. Clin. Pharmacol.* bcp.14784 (2021).doi:10.1111/bcp.14784
22. Haut Conseil de la Santé Publique. Statement on the management at home or in a care facility of suspected or confirmed Covid-19 patients. (2020).at <<https://www.hcsp.fr>>
23. Lagunas-Rangel, F. A. Neutrophil-to-lymphocyte ratio and lymphocyte-to-C-reactive protein ratio in patients with severe coronavirus disease 2019 (COVID-19): A meta-analysis. *J. Med. Virol.* (2020).
24. Williamson, E. J. *et al.* Factors associated with COVID-19-related death using OpenSAFELY. *Nature* **584**, 430–436 (2020).
25. Neuraz, A. *et al.* Natural language processing for rapid response to emergent diseases: Case study of calcium channel blockers and hypertension in the COVID-19 pandemic. *J. Med. Internet Res.* **22**, e20773 (2020).
26. WHO Collaborating Centre for Drug Statistics Methodology ATC/DDD Index 2021. (2020).at <https://www.whocc.no/atc_ddd_index/>
27. Zhang, Z., Kim, H. J., Lonjon, G., Zhu, Y., & written on behalf of AME Big-Data Clinical Trial Collaborative Group Balance diagnostics after propensity score matching. *Ann. Transl. Med.* **7**, 16–16 (2019).
28. Austin, P. C. Using the standardized difference to compare the prevalence of a binary variable between two groups in observational research. *Commun. Stat.-Simul. Comput.* **38**, 1228–1234 (2009).

29. Stuart, E. A., Lee, B. K. & Leacy, F. P. Prognostic score–based balance measures can be a useful diagnostic for propensity score methods in comparative effectiveness research. *J. Clin. Epidemiol.* **66**, S84-S90.e1 (2013).
30. Terry M. Therneau & Patricia M. Grambsch *Modeling Survival Data: Extending the Cox Model.* (Springer, New York, 2000).
31. Robins, J. M., Hernán, M. Á. & Brumback, B. Marginal Structural Models and Causal Inference in Epidemiology. *Epidemiology* **11**, 550–560 (2000).
32. Efron, B. Nonparametric standard errors and confidence intervals. *Can. J. Stat.* **9**, 139–158 (1981).
33. U.S. National Library of Medicine ClinicalTrials.gov. (2021).at
<<https://clinicaltrials.gov/ct2/results?cond=Covid19&term=paracetamol&cntry=&state=&city=&dist=>>
34. Sukhatme, V. P., Reiersen, A. M., Vayttaden, S. J. & Sukhatme, V. V. Fluvoxamine: A Review of Its Mechanism of Action and Its Role in COVID-19. *Front. Pharmacol.* **12**, 652688 (2021).
35. Plaze, M. *et al.* Inhibition of the replication of SARS-CoV-2 in human cells by the FDA-approved drug chlorpromazine. *Int. J. Antimicrob. Agents* 106274 (2020).
36. Zimniak, M. *et al.* The serotonin reuptake inhibitor Fluoxetine inhibits SARS-CoV-2 in human lung tissue. *Sci. Rep.* **11**, 5890 (2021).
37. Ishima, T., Fujita, Y. & Hashimoto, K. Interaction of new antidepressants with sigma-1 receptor chaperones and their potentiation of neurite outgrowth in PC12 cells. *Eur. J. Pharmacol.* **727**, 167–173 (2014).
38. Ishikawa, M. *et al.* High occupancy of sigma-1 receptors in the human brain after single oral administration of fluvoxamine: a positron emission tomography study using [¹¹C] SA4503. *Biol. Psychiatry* **62**, 878–883 (2007).

39. Zhou, Y. *et al.* Network-based drug repurposing for novel coronavirus 2019-nCoV/SARS-CoV-2. *Cell Discov.* **6**, 1–18 (2020).
40. Hashimoto, K. Activation of sigma-1 receptor chaperone in the treatment of neuropsychiatric diseases and its clinical implication. *J. Pharmacol. Sci.* **127**, 6–9 (2015).
41. Krutetskaya, Z., Melnitskaya, A., Antonov, V. & Nozdrachev, A. Sigma-1 receptor antagonists haloperidol and chlorpromazine modulate the effect of glutoxim on NA⁺ transport in frog skin. In *Dokl. Biochem. Biophys.* **484**, 63–65 (Springer, 2019).
42. Vela, J. M. Repurposing sigma-1 receptor ligands for Covid-19 therapy? *Front. Pharmacol.* **11**, 1716 (2020).
43. Gordon, D. E. *et al.* Comparative host-coronavirus protein interaction networks reveal pan-viral disease mechanisms. *Science* **370**, (2020).
44. Köhler, C. A. *et al.* Peripheral alterations in cytokine and chemokine levels after antidepressant drug treatment for major depressive disorder: systematic review and meta-analysis. *Mol. Neurobiol.* **55**, 4195–4206 (2018).
45. Hojyo, S. *et al.* How COVID-19 induces cytokine storm with high mortality. *Inflamm. Regen.* **40**, 1–7 (2020).
46. Ye, Q., Wang, B. & Mao, J. The pathogenesis and treatment of the Cytokine Storm in COVID-19. *J. Infect.* **80**, 607–613 (2020).
47. Obuchowicz, E., Bielecka-Wajdman, A. M., Paul-Samojedny, M. & Nowacka, M. Different influence of antipsychotics on the balance between pro-and anti-inflammatory cytokines depends on glia activation: an in vitro study. *Cytokine* **94**, 37–44 (2017).
48. Sugino, H., Futamura, T., Mitsumoto, Y., Maeda, K. & Marunaka, Y. Atypical antipsychotics suppress production of proinflammatory cytokines and up-regulate interleukin-10 in lipopolysaccharide-treated mice. *Prog. Neuropsychopharmacol. Biol. Psychiatry* **33**, 303–307 (2009).

49. Mengozzi, M. *et al.* Chlorpromazine specifically inhibits peripheral and brain TNF production, and up-regulates IL-10 production, in mice. *Immunology* **82**, 207 (1994).
50. Dragioti, E. *et al.* Association of antidepressant use with adverse health outcomes: a systematic umbrella review. *JAMA Psychiatry* **76**, 1241–1255 (2019).

TABLE LEGENDS

Table 1. List of medications that have shown to *in vitro* inhibit acid sphingomyelinase. ^{5–10}

Table 2. Characteristics of patients hospitalized for severe COVID-19 receiving or not receiving a FIASMA medication at baseline (N=2,846).

Table 3. Association between FIASMA medication use at baseline and risk of intubation or death among patients hospitalized for severe COVID-19 (N=2,846).

Table 4. Association of each FIASMA class prescribed at baseline with the composite endpoint of intubation or death among patients hospitalized for severe COVID-19 (N=2,846).

FIGURE LEGENDS

Figure 1. Biological mechanisms proposed by Carpinteiro *et al.*^{5,10} underlying the potential inhibition by Functional Inhibitors of Acid Sphingomyelinase (FIASMA) of cell infection with SARS-CoV-2. Initial binding of SARS-CoV-2 spike protein to its ACE2 receptor may result in activation of the acid sphingomyelinase (ASM), formation of surface ceramide molecules that spontaneously form ceramide-enriched membrane platforms. These platforms alter membrane properties and thereby may serve to trap and cluster activated ACE2 receptors, and facilitate viral entry; inhibition of the ASM by FIASMA may result in reduced concentration of ceramides and decreased viral entry.

Figure 2. Study cohort. *A participant may receive two or more FIASMA medications at baseline.

Figure 3. Kaplan-Meier curves for the composite endpoint of intubation or death in the full sample crude analysis (N=2846) (a), in the full sample analysis with IPW (N=2846) (b), and in the matched analytic sample using a 1:1 ratio (N=554) (c) among patients hospitalized for severe COVID-19, according to FIASMA medication use at baseline. The shaded areas represent pointwise 95% confidence intervals. Abbreviations: IPW, inverse probability weighting; FIASMA, Functional Inhibitors of Acid Sphingomyelinase Activity.

SUPPLEMENTARY MATERIAL

Figure S1. Propensity score (PS) distribution in patients taking *versus* not taking a FIASMA medication at baseline.

Table S1. Associations of baseline clinical characteristics with the composite endpoint of intubation or death in the cohort of adult patients who had been admitted to AP-HP hospitals for severe COVID-19 (N=2,846).

Table S2. Association of each FIASMA class and molecule prescribed at baseline with the composite endpoint of intubation or death among patients hospitalized for severe COVID-19 (N=2,846).

Table S3. Association between FIASMA medication use at baseline and the endpoint of intubation or death as compared with paracetamol use at baseline among patients hospitalized for severe COVID-19.

Table S4. Association between FIASMA medication use at baseline and the composite endpoint of intubation or death among patients hospitalized for severe COVID-19, while considering venlafaxine, citalopram, and mirtazapine as FIASMAs (N=2,846).

Table S5. Association between FIASMA medication use at baseline and the composite endpoint of intubation or death among all patients hospitalized for COVID-19 whatever their baseline clinical severity (N=14,429).

Table S6. Association between FIASMA medications with low or no affinity for Sigma-1-receptors (i.e., amlodipine, paroxetine, duloxetine, aripiprazole) and the composite endpoint of intubation or death among adult patients hospitalized for severe COVID-19.

TABLES

Table 1. List of medications that have shown to *in vitro* inhibit acid sphingomyelinase. ⁵⁻
10

Antiarrhythmics	Amiodarone	Aprindine
Anticholinergic antiparkinson medications	Benztropine Biperidene	Profenamine
Antidepressants	Amitriptyline Citalopram Clomipramine Desipramine Doxepin Duloxetine Escitalopram Fluoxetine Fluvoxamine Imipramine	Lofepramine Maprotiline Mirtazapine Nortriptyline Paroxetine Protriptyline Sertraline Trimipramine Venlafaxine
Antidiarrheal medication	Loperamide	
Antihistamine medications	Astemizole Clemastine Cyproheptadine Desloratadine Hydroxyzine	Loratadine Mebhydrolin Pimethixene Promethazine Terfenadine
Antimycobacterial	Clofazimine	
Antiprotozoal medications	Emetine	Quinacrine
Antipsychotics	Aripiprazole Chlorpromazine Chlorprothixene Fluphenazine Flupenthixol Penfluridol Perphenazine	Pimozide Promazine Sertindole Thioridazin Trifluoperazine Triflupromazine
Antivertigo medications	Cinnarizine	Flunarizine
Beta blocking agents	Carvedilol	
Calcium channel blockers	Amlodipine Bepridil Fendiline	Mibefradil Perhexiline
Cough suppressant	Cloperastine	
Endocrine therapy medication	Tamoxifen	
Medications for functional gastrointestinal disorders	Alverine Camylofin	Dicycloverine Mebeverine
Medications of the nervous system	Cinnarizine	Flunarizine
Mucolytic	Ambroxol	
Muscle relaxant	Cyclobenzaprine	
Natural products	Conessine Solasodine	Tomatidine
Vasodilators	Dilazep	Suloctidil

Table 2. Characteristics of patients hospitalized for severe COVID-19 receiving or not receiving a FIASMA medication at baseline (N=2,846).

	Exposed to any FIASMA medication (N=277)	Not exposed to FIASMA medication (N=2,569)	Non-exposed matched group (N=277)	Exposed to any FIASMA medication vs. Not exposed	Exposed to any FIASMA medication vs. Not exposed	Exposed to any FIASMA medication vs. Non-exposed matched group
				Crude analysis	Analysis weighted by inverse-probability-weighting weights	Matched analytic sample analysis using a 1:1 ratio
	N (%)	N (%)	N (%)	SMD	SMD	SMD
Age				0.369	0.097	0.095
18 to 50 years	29 (10.5%)	493 (19.2%)	29 (10.5%)			
51 to 70 years	88 (31.8%)	1027 (40.0%)	99 (35.7%)			
71 to 80 years	63 (22.7%)	457 (17.8%)	55 (19.9%)			
More than 80 years	97 (35.0%)	592 (23.0%)	94 (33.9%)			
Sex				0.224	0.034	0.094
Women	131 (47.3%)	933 (36.3%)	118 (42.6%)			
Men	146 (52.7%)	1636 (63.7%)	159 (57.4%)			
Hospital				0.171	0.087	0.097
AP-HP Centre - Paris University, Henri Mondor University Hospitals and at home hospitalization	62 (22.4%)	660 (25.7%)	70 (25.3%)			
AP-HP Nord and Hôpitaux Universitaires Paris Seine-Saint-Denis	76 (27.4%)	813 (31.6%)	68 (24.5%)			
AP-HP Paris Saclay University	63 (22.7%)	561 (21.8%)	68 (24.5%)			
AP-HP Sorbonne University	76 (27.4%)	535 (20.8%)	71 (25.6%)			
Obesity ^a				0.100	0.008	0.034
Yes	67 (24.2%)	515 (20.0%)	63 (22.7%)			

<i>No</i>	210 (75.8%)	2054 (80.0%)	214 (77.3%)			
Smoking ^b				0.130	0.025	0.060
<i>Yes</i>	46 (16.6%)	310 (12.1%)	40 (14.4%)			
<i>No</i>	231 (83.4%)	2259 (87.9%)	237 (85.6%)			
Medication according to compassionate use or as part of a clinical trial ^c				0.040	0.020	0.024
<i>Yes</i>	83 (30.0%)	723 (28.1%)	80 (28.9%)			
<i>No</i>	194 (70.0%)	1846 (71.9%)	197 (71.1%)			
Other infectious diseases ^d				0.225	0.040	0.046
<i>Yes</i>	55 (19.9%)	301 (11.7%)	50 (18.1%)			
<i>No</i>	222 (80.1%)	2268 (88.3%)	227 (81.9%)			
Neoplasms and diseases of the blood ^e				0.150	0.055	0.050
<i>Yes</i>	46 (16.6%)	293 (11.4%)	41 (14.8%)			
<i>No</i>	231 (83.4%)	2276 (88.6%)	236 (85.2%)			
Mental disorders ^f				0.392	0.061	0.085
<i>Yes</i>	70 (25.3%)	270 (10.5%)	60 (21.7%)			
<i>No</i>	207 (74.7%)	2299 (89.5%)	217 (78.3%)			
Diseases of the nervous system ^g				0.242	0.047	0.078
<i>Yes</i>	49 (17.7%)	243 (9.5%)	41 (14.8%)			
<i>No</i>	228 (82.3%)	2326 (90.5%)	236 (85.2%)			
Cardiovascular disorders ^h				0.392	0.099	0.022
<i>Yes</i>	147 (53.1%)	873 (34.0%)	144 (52.0%)			
<i>No</i>	130 (46.9%)	1696 (66.0%)	133 (48.0%)			
Respiratory disorders ⁱ				0.246	0.030	0.064
<i>Yes</i>	195 (70.4%)	1509 (58.7%)	203 (73.3%)			
<i>No</i>	82 (29.6%)	1060 (41.3%)	74 (26.7%)			
Digestive disorders ^j				0.244	0.015	0.073
<i>Yes</i>	42 (15.2%)	192 (7.5%)	35 (12.6%)			
<i>No</i>	235 (84.8%)	2377 (92.5%)	242 (87.4%)			
Dermatological disorders ^k				0.152	0.010	<0.001
<i>Yes</i>	14 (5.1%)	57 (2.2%)	14 (5.1%)			

<i>No</i>	263 (94.9%)	2512 (97.8%)	263 (94.9%)			
Diseases of the musculoskeletal system ^l				0.133	0.027	<0.001
<i>Yes</i>	22 (7.9%)	121 (4.7%)	22 (7.94%)			
<i>No</i>	255 (92.1%)	2448 (95.3%)	255 (92.1%)			
Diseases of the genitourinary system ^m				0.344	0.055	0.049
<i>Yes</i>	76 (27.4%)	353 (13.7%)	70 (25.3%)			
<i>No</i>	201 (72.6%)	2216 (86.3%)	207 (74.7%)			
Endocrine disorders ⁿ				0.266	0.037	0.007
<i>Yes</i>	134 (48.4%)	908 (35.3%)	135 (48.7%)			
<i>No</i>	143 (51.6%)	1661 (64.7%)	142 (51.3%)			
Eye-Ear-Nose-Throat disorders ^o				0.145	0.008	<0.001
<i>Yes</i>	12 (4.3%)	47 (1.8%)	12 (4.33%)			
<i>No</i>	265 (95.7%)	2522 (98.2%)	265 (95.7%)			

^a Defined as having a body-mass index higher than 30 kg/m² or an International Statistical Classification of Diseases and Related Health Problems (ICD-10) diagnosis code for obesity (E66.0, E66.1, E66.2, E66.8, E66.9).

^b Current smoking status was self-reported.

^c Any medication prescribed as part of a clinical trial or according to compassionate use (e.g., hydroxychloroquine, azithromycin, remdesivir, tocilizumab, sarilumab or dexamethasone).

^d Assessed using ICD-10 diagnosis codes for certain infectious and parasitic diseases (A00-B99).

^e Assessed using ICD-10 diagnosis codes for neoplasms (C00-D49) and diseases of the blood and blood-forming organs and certain disorders involving the immune mechanism (D50-D89).

^f Assessed using ICD-10 diagnosis codes for mental, behavioural and neurodevelopmental disorders (F01-F99).

^g Assessed using ICD-10 diagnosis codes for diseases of the nervous system (G00-G99).

^h Assessed using ICD-10 diagnosis codes for diseases of the circulatory system (I00-I99).

ⁱ Assessed using ICD-10 diagnosis codes for diseases of the respiratory system (J00-J99).

^j Assessed using ICD-10 diagnosis codes for diseases of the digestive system (K00-K95).

^k Assessed using ICD-10 diagnosis codes for diseases of the skin and subcutaneous tissue (L00-L99).

^l Assessed using ICD-10 diagnosis codes for diseases of the musculoskeletal system and connective tissue (M00-M99).

^m Assessed using ICD-10 diagnosis codes for diseases of the genitourinary system (N00-N99).

ⁿ Assessed using ICD-10 diagnosis codes for endocrine, nutritional and metabolic diseases (E00-E89).

^o Assessed using ICD-10 diagnosis codes for diseases of the eye and adnexa (H00-H59) and diseases of the ear and mastoid process (H60-H95).

SMD>0.1 (in bold) indicate significant differences.

Abbreviation: SMD, standardized mean difference.

Table 3. Association between FIASMA medication use at baseline and risk of intubation or death among patients hospitalized for severe COVID-19 (N=2,846).

	Number of events / Number of patients	Crude Cox regression analysis	Multivariable Cox regression analysis	Analysis weighted by inverse- probability- weighting weights	Number of events / Number of patients in the matched groups	Univariate Cox regression in a 1:1 ratio matched analytic sample
	N / N (%)	HR (95% CI; p- value)	HR (95% CI; p- value)	HR (95% CI; p- value)	N / N (%)	HR (95% CI; p- value)
No FIASMA medication	1064 / 2569 (41.4%)	Ref	Ref	Ref	137 / 277 (49.5%)	Ref
Any FIASMA medication	104 / 277 (37.5%)	0.71 (0.58 - 0.87; 0.001*)	0.66 (0.53 - 0.83; <0.001*)	0.58 (0.46 - 0.72; <0.001*)	104 / 277 (37.5%)	0.55 (0.43 - 0.73; <0.001*)

* Two-sided p-value is significant (p<0.05).

Abbreviations: FIASMA, Functional Inhibitor of Acid Sphingomyelinase; HR, hazard ratio; CI, confidence interval.

Table 4. Association of each FIASMA class prescribed at baseline with the composite endpoint of intubation or death among patients hospitalized for severe COVID-19 (N=2,846).

	Number of events / Number of patients	Crude Cox regression analysis	Multivariable Cox regression analysis	Analysis weighted by inverse-probability-weighting weights	Analysis weighted by inverse-probability-weighting weights adjusted for unbalanced covariates	Number of events / Number of patients in the matched control groups	Univariate Cox regression in 1:2 ratio matched analytic samples	Cox regression in 1:2 ratio matched analytic samples adjusted for unbalanced covariates
	N / N (%)	HR (95% CI; p-value)	HR (95% CI; p-value)	HR (95% CI; p-value)	HR (95% CI; p-value)	N / N (%)	HR (95% CI; p-value)	HR (95% CI; p-value)
No FIASMA medication	1064 / 2569 (41.4)	Ref.	Ref.	Ref.	Ref.	Ref.	Ref.	Ref.
FIASMA alimentary tract and metabolism medication	2 / 9 (22.2)	0.39 (0.10 - 1.56; 0.182)	0.25 (0.05 - 1.33; 0.104)	0.15 (0.02 - 1.21; 0.075)	NA	11 / 18 (61.1)	0.24 (0.05 - 1.12; 0.070)	NA
FIASMA cardiovascular system medications	54 / 125 (43.2)	1.07 (0.81 - 1.41; 0.650)	0.82 (0.64 - 1.06; 0.135)	0.61 (0.45 - 0.81; <0.001*)	0.61 (0.46 - 0.83; 0.001*) ^a	129 / 250 (51.6)	0.80 (0.58 - 1.10; 0.169)	0.83 (0.62 - 1.13; 0.238) ^b
<i>FIASMA calcium channel blockers</i>	38 / 97 (39.2)	0.88 (0.61 - 1.27; 0.510)	0.70 (0.49 - 0.98; 0.037*)	0.56 (0.39 - 0.79; <0.001*)	0.68 (0.49 - 0.94; 0.020*) ^c	97 / 194 (50.0)	0.74 (0.48 - 1.16; 0.190)	0.75 (0.51 - 1.11; 0.149) ^d
<i>Other FIASMA cardiovascular system medications</i>	19 / 34 (55.9)	1.66 (1.21 - 2.28; 0.002*)	1.27 (0.96 - 1.69; 0.100)	NA	NA	37 / 68 (54.4)	0.91 (0.52 - 1.59; 0.748)	0.80 (0.44 - 1.46; 0.469) ^e
FIASMA nervous system medications	61 / 175 (34.9)	0.62 (0.48 - 0.80; <0.001*)	0.65 (0.49 - 0.88; <0.001*)	0.51 (0.38 - 0.69; <0.001*)	0.49 (0.37 - 0.64; <0.001*) ^f	173 / 350 (49.4)	0.60 (0.44 - 0.82; 0.002*)	0.61 (0.45 - 0.83; 0.002*) ^g
<i>FIASMA psychoanaleptic medications</i>	59 / 169 (34.9)	0.62 (0.47 - 0.80; <0.001*)	0.65 (0.48 - 0.87; <0.001*)	0.51 (0.37 - 0.70; <0.001*)	0.48 (0.36 - 0.63; <0.001*) ^h	169 / 338 (50.0)	0.58 (0.42 - 0.80; <0.001*)	0.60 (0.44 - 0.82; 0.001*) ⁱ
<i>FIASMA psycholeptic medications</i>	4 / 13 (30.8)	0.68 (0.28 - 1.64; 0.387)	0.59 (0.26 - 1.35; 0.210)	NA	NA	8 / 26 (30.8)	0.82 (0.25 - 2.73; 0.746)	0.80 (0.21 - 2.98; 0.735) ^j
FIASMA respiratory system medications	3 / 7 (42.9)	1.02 (0.33 - 3.18; 0.970)	0.68 (0.25 - 1.81; 0.439)	NA	NA	7 / 14 (50.0)	0.84 (0.22 - 3.26; 0.798)	NA

^a Adjusted for age, cardiovascular disorders, and diseases of the genitourinary system.

^b Adjusted for hospital, current smoking status, medication prescribed as part of a clinical trial or according to compassionate use, cardiovascular disorders, respiratory disorders, and diseases of the genitourinary system.

^c Adjusted for cardiovascular disorders, diseases of the genitourinary system, and endocrine disorders.

^d Adjusted for hospital, current smoking status, diseases of the nervous system, respiratory disorders, and diseases of the genitourinary system.

^e Adjusted for hospital, obesity, current smoking status, medication prescribed as part of a clinical trial or according to compassionate use, respiratory disorders, and diseases of the genitourinary system.

^f Adjusted for hospital.

^g Adjusted for age, sex, current smoking status, and mental disorders.

^h Adjusted for hospital.

ⁱ Adjusted for age, sex, current smoking status, and mental disorders.

^j Adjusted for age, sex, hospital, obesity, current smoking status, medication prescribed as part of a clinical trial or according to compassionate use, mental disorders, and endocrine disorders.

* Two-sided p-value is significant ($p < 0.05$).

Abbreviations: HR, hazard ratio; CI, confidence interval; NA, not applicable

FIGURES

Figure 1. Biological mechanisms proposed by Carpinteiro et al.^{5,10} underlying the potential inhibition by Functional Inhibitors of Acid Sphingomyelinase (FIASMAS) of cell infection with SARS-CoV-2. Initial binding of SARS-CoV-2 spike protein to its ACE2 receptor may result in activation of the acid sphingomyelinase (ASM), formation of surface ceramide molecules that spontaneously form ceramide-enriched membrane platforms. These platforms alter membrane properties and thereby may serve to trap and cluster activated ACE2 receptors, and facilitate viral entry; inhibition of the ASM by FIASMAS may result in reduced concentration of ceramides and decreased viral entry.

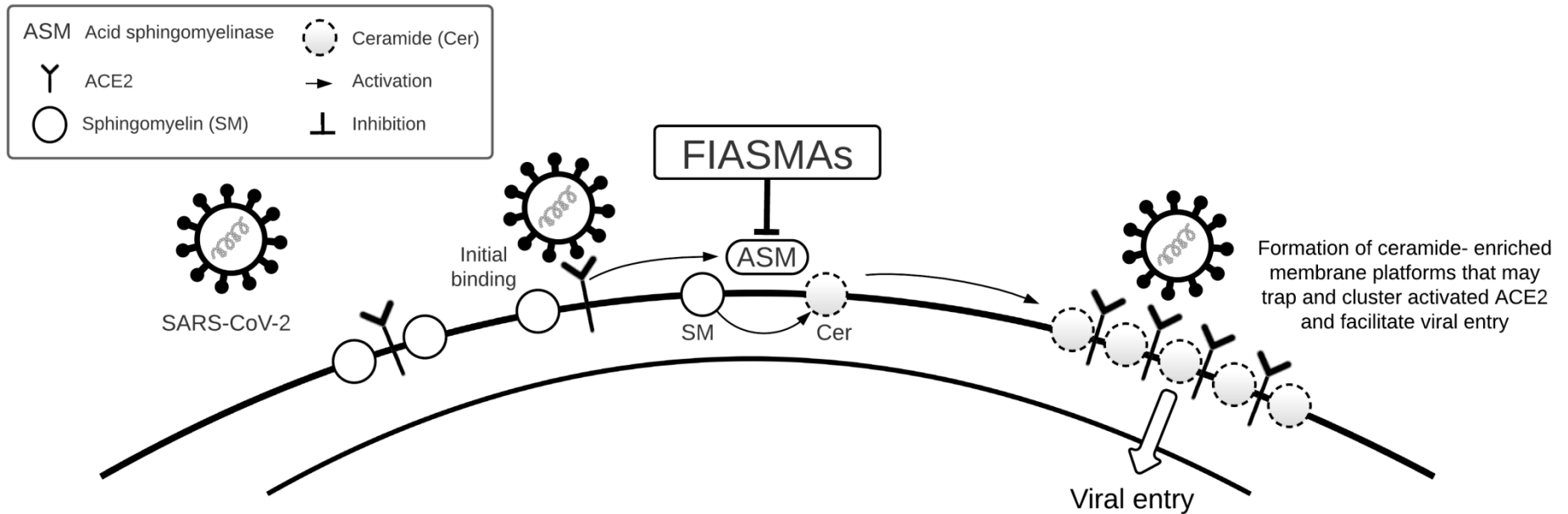


Figure 2. Study cohort. *A participant may receive two or more FIASMA medications at baseline.

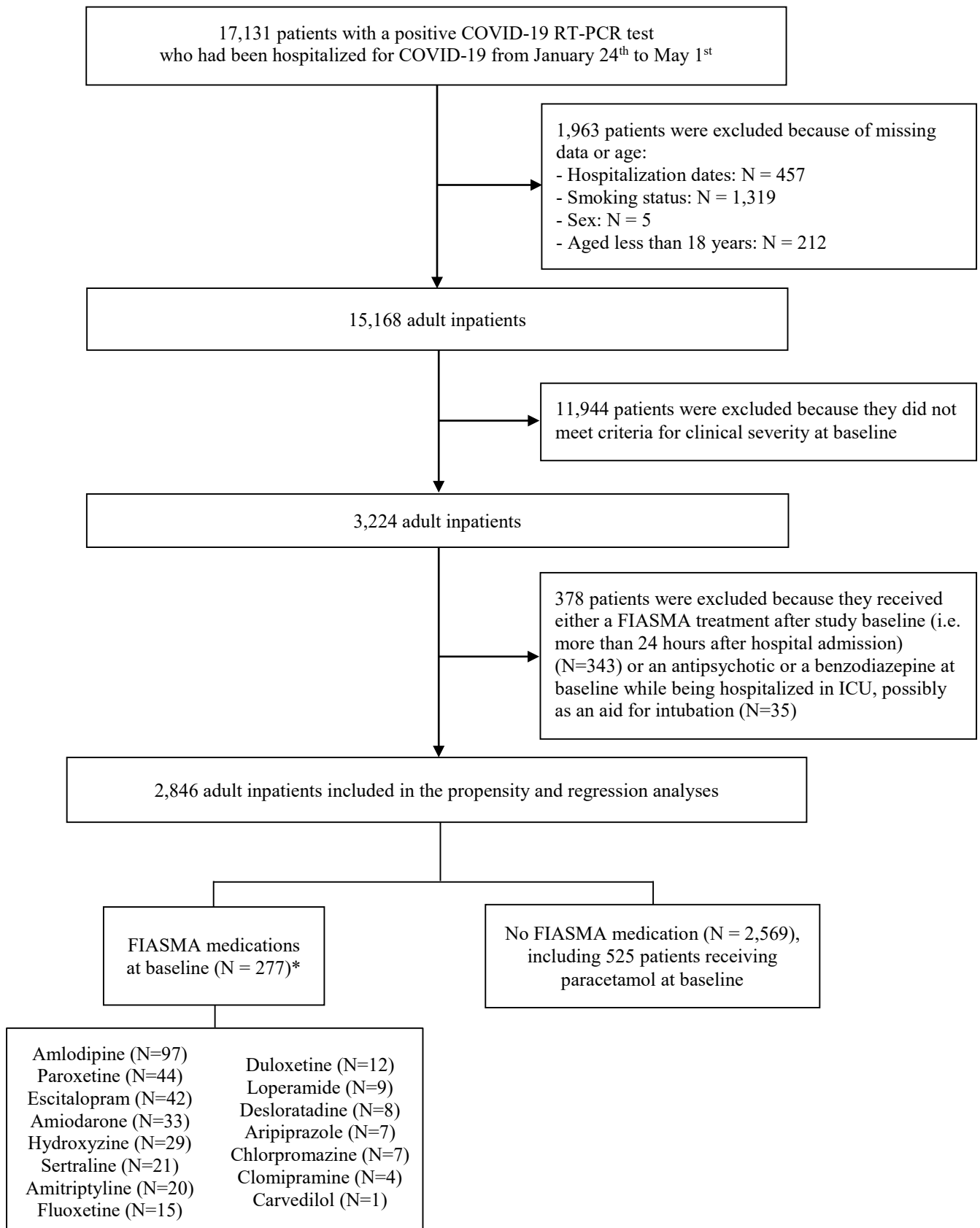
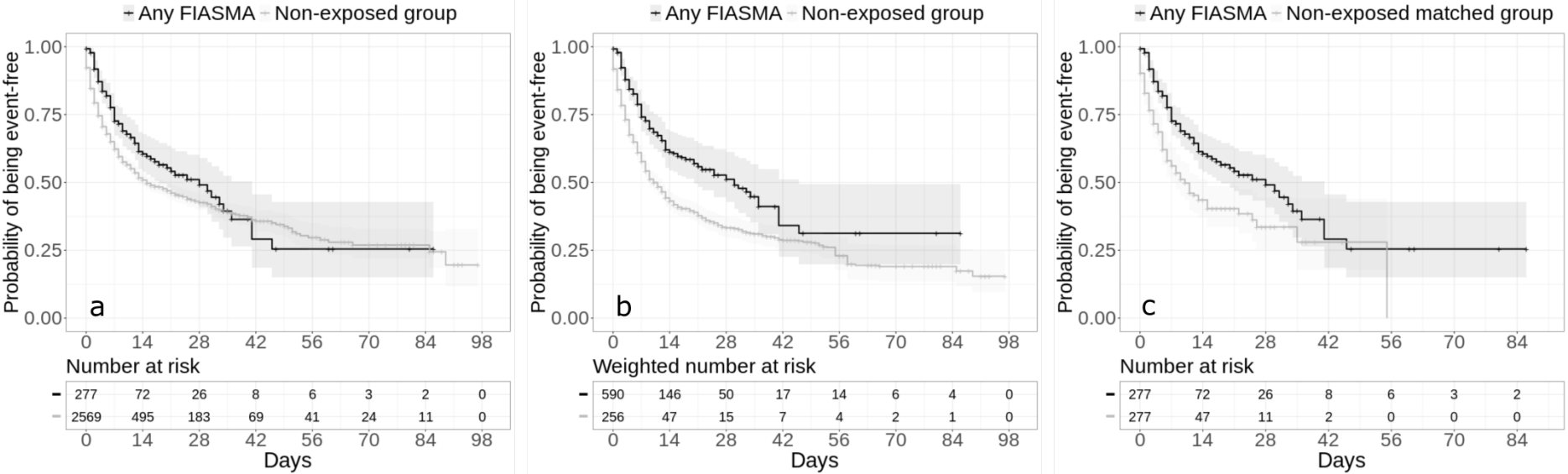


Figure 3. Kaplan-Meier curves for the composite endpoint of intubation or death in the full sample crude analysis (N=2846) (a), in the full sample analysis with IPW (N=2846) (b), and in the matched analytic sample using a 1:1 ratio (N=554) (c) among patients hospitalized for severe COVID-19, according to FIASMA medication use at baseline. The shaded areas represent pointwise 95% confidence intervals. Abbreviations: IPW, inverse probability weighting; FIASMA, Functional Inhibitors of Acid Sphingomyelinase Activity.



SUPPLEMENTARY MATERIAL

Figure S1. Propensity score (PS) distribution in patients taking *versus* not taking a FIASMA medication at baseline.

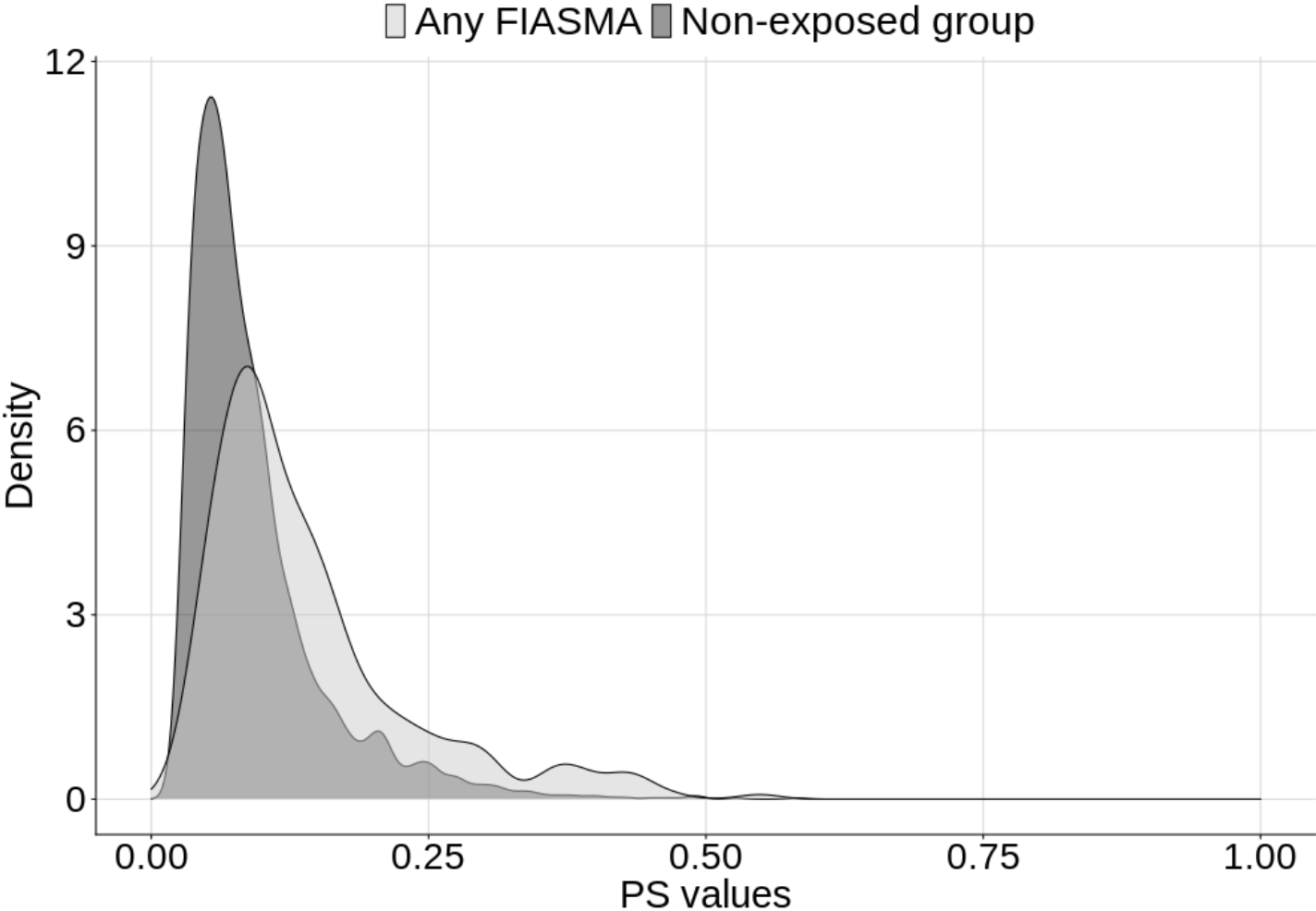


Table S1. Associations of baseline clinical characteristics with the composite endpoint of intubation or death in the cohort of adult patients who had been admitted to AP-HP hospitals for severe COVID-19 (N=2,846).

	Full sample (N=2,846)	With the endpoint (N=1,168)	Without the endpoint (N=1,678)	Crude analysis	Multivariable analysis	
	N (%)	N (%)	N (%)	HR (95% CI; p-value)	HR (95% CI; p- value)	Collinearity diagnostic (variance inflation factor)
Age						1.04
18 to 50 years	522 (18.3)	137 (26.2)	385 (73.8)	Ref.	Ref.	
51 to 70 years	1115 (39.2)	438 (39.3)	677 (60.7)	1.27 (1.05 - 1.54; 0.013*)	1.07 (0.86 - 1.33; 0.567)	
71 to 80 years	520 (18.3)	242 (46.5)	278 (53.5)	1.41 (1.14 - 1.74; 0.001*)	1.08 (0.84 - 1.38; 0.565)	
More than 80 years	689 (24.2)	351 (50.9)	338 (49.1)	1.37 (1.13 - 1.67; 0.002*)	1.16 (0.90 - 1.50; 0.250)	
Sex						1.05
Women	1064 (37.4)	375 (35.2)	689 (64.8)	Ref.	Ref.	
Men	1782 (62.6)	793 (44.5)	989 (55.5)	1.28 (1.13 - 1.45; <0.001*)	1.50 (1.26 - 1.79; <0.001*)	
Hospital						1.02
AP-HP Centre - Paris University, Henri Mondor University Hospitals and at home hospitalization	722 (25.4)	349 (48.3)	373 (51.7)	Ref.	Ref.	

<i>AP-HP Nord and Hôpitaux Universitaires Paris Seine-Saint-Denis</i>	889 (31.2)	313 (35.2)	576 (64.8)	0.87 (0.74 - 1.01; 0.067)	1.05 (0.87 - 1.27; 0.590)	
<i>AP-HP Paris Saclay University</i>	624 (21.9)	245 (39.3)	379 (60.7)	0.77 (0.65 - 0.91; 0.002*)	0.77 (0.63 - 0.93; 0.009*)	
<i>AP-HP Sorbonne University</i>	611 (21.5)	261 (42.7)	350 (57.3)	0.94 (0.80 - 1.10; 0.452)	1.00 (0.83 - 1.22; 0.963)	
Obesity ^a						1.08
<i>Yes</i>	582 (20.4)	293 (50.3)	289 (49.7)	1.34 (1.17 - 1.53; <0.001*)	1.31 (1.08 - 1.59; 0.005*)	
<i>No</i>	2264 (79.6)	875 (38.6)	1389 (61.4)	Ref.	Ref.	
Smoking ^b						1.02
<i>Yes</i>	356 (12.5)	161 (45.2)	195 (54.8)	0.94 (0.80 - 1.11; 0.463)	0.90 (0.71 - 1.14; 0.389)	
<i>No</i>	2490 (87.5)	1007 (40.4)	1483 (59.6)	Ref.	Ref.	
Medication according to compassionate use or as part of a clinical trial ^c						1.06
<i>Yes</i>	806 (28.3)	343 (42.6)	463 (57.4)	0.95 (0.84 - 1.08; 0.450)	0.80 (0.69 - 0.93; 0.003*)	
<i>No</i>	2040 (71.7)	825 (40.4)	1215 (59.6)	Ref.	Ref.	
Other infectious diseases ^d						1.08
<i>Yes</i>	356 (12.5)	221 (62.1)	135 (37.9)	1.71 (1.48 - 1.98; <0.001*)	1.30 (1.08 - 1.56; 0.006*)	
<i>No</i>	2490 (87.5)	947 (38.0)	1543 (62.0)	Ref.	Ref.	
Neoplasms and diseases of the blood ^e						1.07
<i>Yes</i>	339 (11.9)	177 (52.2)	162 (47.8)	1.22 (1.04 - 1.43; 0.017*)	0.79 (0.64 - 0.98; 0.035*)	
<i>No</i>	2507 (88.1)	991 (39.5)	1516 (60.5)	Ref.	Ref.	
Mental disorders ^f						1.09
<i>Yes</i>	340 (11.9)	198 (58.2)	142 (41.8)	1.37 (1.17 - 1.59; <0.001*)	1.10 (0.92 - 1.32; 0.291)	
<i>No</i>	2506 (88.1)	970 (38.7)	1536 (61.3)	Ref.	Ref.	

Diseases of the nervous system ^g						1.08
<i>Yes</i>	292 (10.3)	174 (59.6)	118 (40.4)	1.54 (1.31 - 1.81; <0.001*)	1.05 (0.86 - 1.27; 0.639)	
<i>No</i>	2554 (89.7)	994 (38.9)	1560 (61.1)	Ref.	Ref.	
Cardiovascular disorders ^h						1.24
<i>Yes</i>	1020 (35.8)	557 (54.6)	463 (45.4)	1.78 (1.59 - 2.00; <0.001*)	1.29 (1.09 - 1.53; 0.003*)	
<i>No</i>	1826 (64.2)	611 (33.5)	1215 (66.5)	Ref.	Ref.	
Respiratory disorders ⁱ						1.25
<i>Yes</i>	1704 (59.9)	828 (48.6)	876 (51.4)	1.90 (1.67 - 2.16; <0.001*)	1.38 (1.10 - 1.72; 0.005*)	
<i>No</i>	1142 (40.1)	340 (29.8)	802 (70.2)	Ref.	Ref.	
Digestive disorders ^j						1.05
<i>Yes</i>	234 (8.2)	121 (51.7)	113 (48.3)	1.22 (1.01 - 1.47; 0.038*)	1.03 (0.84 - 1.26; 0.769)	
<i>No</i>	2612 (91.8)	1047 (40.1)	1565 (59.9)	Ref.	Ref.	
Dermatological disorders ^k						1.02
<i>Yes</i>	71 (2.5)	44 (62.0)	27 (38.0)	1.38 (1.02 - 1.86; 0.036*)	1.07 (0.75 - 1.52; 0.721)	
<i>No</i>	2775 (97.5)	1124 (40.5)	1651 (59.5)	Ref.	Ref.	
Diseases of the musculoskeletal system ^l						1.04
<i>Yes</i>	143 (5.0)	67 (46.9)	76 (53.1)	1.02 (0.80 - 1.30; 0.890)	0.94 (0.73 - 1.22; 0.655)	
<i>No</i>	2703 (95.0)	1101 (40.7)	1602 (59.3)	Ref.	Ref.	
Diseases of the genitourinary system ^m						1.10
<i>Yes</i>	429 (15.1)	288 (67.1)	141 (32.9)	1.93 (1.69 - 2.20; <0.001*)	1.25 (1.01 - 1.56; 0.043*)	
<i>No</i>	2417 (84.9)	880 (36.4)	1537 (63.6)	Ref.	Ref.	
Endocrine disorders ⁿ						1.27
<i>Yes</i>	1042 (36.6)	542 (52.0)	500 (48.0)	1.56 (1.39 - 1.75; <0.001*)	1.12 (0.95 - 1.33; 0.173)	

<i>No</i>	1804 (63.4)	626 (34.7)	1178 (65.3)	Ref.	Ref.	
Eye-Ear-Nose-Throat disorders ^o						1.03
<i>Yes</i>	59 (2.1)	31 (52.5)	28 (47.5)	1.18 (0.82 - 1.68; 0.370)	0.97 (0.69 - 1.35; 0.840)	
<i>No</i>	2787 (97.9)	1137 (40.8)	1650 (59.2)	Ref.	Ref.	

^a Defined as having a body-mass index higher than 30 kg/m² or an International Statistical Classification of Diseases and Related Health Problems (ICD-10) diagnosis code for obesity (E66.0, E66.1, E66.2, E66.8, E66.9).

^b Current Smoking status was self-reported.

^c Any medication prescribed as part of a clinical trial or according to compassionate use (e.g., hydroxychloroquine, azithromycin, remdesivir, tocilizumab, sarilumab or dexamethasone).

^d Assessed using ICD-10 diagnosis codes for certain infectious and parasitic diseases (A00-B99).

^e Assessed using ICD-10 diagnosis codes for neoplasms (C00-D49) and diseases of the blood and blood-forming organs, and certain disorders involving the immune mechanism (D50-D89).

^f Assessed using ICD-10 diagnosis codes for mental, behavioural, and neurodevelopmental disorders (F01-F99).

^g Assessed using ICD-10 diagnosis codes for diseases of the nervous system (G00-G99).

^h Assessed using ICD-10 diagnosis codes for diseases of the circulatory system (I00-I99).

ⁱ Assessed using ICD-10 diagnosis codes for diseases of the respiratory system (J00-J99).

^j Assessed using ICD-10 diagnosis codes for diseases of the digestive system (K00-K95).

^k Assessed using ICD-10 diagnosis codes for diseases of the skin and subcutaneous tissue (L00-L99).

^l Assessed using ICD-10 diagnosis codes for diseases of the musculoskeletal system, and connective tissue (M00-M99).

^m Assessed using ICD-10 diagnosis codes for diseases of the genitourinary system (N00-N99).

ⁿ Assessed using ICD-10 diagnosis codes for endocrine, nutritional and metabolic diseases (E00-E89).

^o Assessed using ICD-10 diagnosis codes for diseases of the eye and adnexa (H00-H59), and diseases of the ear and mastoid process (H60-H95).

* Two-sided p-value is significant (p<0.05).

Abbreviations: HR, hazard ratio; CI, confidence interval.

Table S2. Association of each FIASMA class and molecule prescribed at baseline with the composite endpoint of intubation or death among patients hospitalized for severe COVID-19 (N=2,846).

	Number of events / Number of patients	Crude Cox regression analysis	Multivariable Cox regression analysis	Analysis weighted by inverse-probability-weighting weights	Analysis weighted by inverse-probability-weighting weights adjusted for unbalanced covariates	Number of events / Number of patients in the matched control groups	Univariate Cox regression in 1:2 ratio matched analytic samples	Cox regression in 1:2 ratio matched analytic samples adjusted for unbalanced covariates
	N / N (%)	HR (95% CI; p-value)	HR (95% CI; p-value)	HR (95% CI; p-value)	HR (95% CI; p-value)	N / N (%)	HR (95% CI; p-value)	HR (95% CI; p-value)
No FIASMA medication	1064 / 2569 (41.4)	Ref.	Ref.	Ref.	Ref.	Ref.	Ref.	Ref.
FIASMA alimentary tract and metabolism medication	2 / 9 (22.2)	0.39 (0.10 - 1.56; 0.182)	0.25 (0.05 - 1.33; 0.104)	0.15 (0.02 - 1.21; 0.075)	NA	11 / 18 (61.1)	0.24 (0.05 - 1.12; 0.070)	NA
<i>Loperamide</i>	2 / 9 (22.2)	0.39 (0.10 - 1.56; 0.182)	0.25 (0.05 - 1.33; 0.104)	0.15 (0.02 - 1.21; 0.075)	NA	11 / 18 (61.1)	0.24 (0.05 - 1.12; 0.070)	NA
FIASMA cardiovascular system medications	54 / 125 (43.2)	1.07 (0.81 - 1.41; 0.650)	0.82 (0.64 - 1.06; 0.135)	0.61 (0.45 - 0.81; <0.001*)	0.61 (0.46 - 0.83; 0.001*) ^a	129 / 250 (51.6)	0.80 (0.58 - 1.10; 0.169)	0.83 (0.62 - 1.13; 0.238) ^b
FIASMA calcium channel blockers	38 / 97 (39.2)	0.88 (0.61 - 1.27; 0.510)	0.70 (0.49 - 0.98; 0.037*)	0.56 (0.39 - 0.79; <0.001*)	0.68 (0.49 - 0.94; 0.020*) ^c	97 / 194 (50.0)	0.74 (0.48 - 1.16; 0.190)	0.75 (0.51 - 1.11; 0.149) ^d
<i>Amlodipine</i>	38 / 97 (39.2)	0.88 (0.61 - 1.27; 0.510)	0.70 (0.49 - 0.98; 0.037*)	0.56 (0.39 - 0.79; <0.001*)	0.68 (0.49 - 0.94; 0.020*) ^e	97 / 194 (50.0)	0.74 (0.48 - 1.16; 0.190)	0.75 (0.51 - 1.11; 0.149) ^f
Other FIASMA cardiovascular system medications	19 / 34 (55.9)	1.66 (1.21 - 2.28; 0.002*)	1.27 (0.96 - 1.69; 0.100)	NA	NA	37 / 68 (54.4)	0.91 (0.52 - 1.59; 0.748)	0.80 (0.44 - 1.46; 0.469) ^g
<i>Amiodarone</i>	18 / 33 (54.5)	1.61 (1.14 - 2.27; 0.007*)	1.26 (0.93 - 1.70; 0.140)	NA	NA	37 / 66 (56.1)	0.90 (0.51 - 1.58; 0.712)	0.80 (0.44 - 1.48; 0.479) ^h
<i>Carvedilol</i>	1 / 1 (100)	NA	NA	NA	NA	NA	NA	NA
FIASMA nervous system medications	61 / 175 (34.9)	0.62 (0.48 - 0.80; <0.001*)	0.65 (0.49 - 0.88; <0.001*)	0.51 (0.38 - 0.69; <0.001*)	0.49 (0.37 - 0.64; <0.001*) ⁱ	173 / 350 (49.4)	0.60 (0.44 - 0.82; 0.002*)	0.61 (0.45 - 0.83; 0.002*) ^j

FIASMA psychoanaleptic medications	59 / 169 (34.9)	0.62 (0.47 - 0.80; <0.001*)	0.65 (0.48 - 0.87; <0.001*)	0.51 (0.37 - 0.70; <0.001*)	0.48 (0.36 - 0.63; <0.001*) ^k	169 / 338 (50.0)	0.58 (0.42 - 0.80; <0.001*)	0.60 (0.44 - 0.82; 0.001*) ^l
<i>Amitriptyline</i>	8 / 20 (40.0)	0.65 (0.33 - 1.31; 0.229)	0.54 (0.25 - 1.17; 0.120)	0.61 (0.29 - 1.28; 0.188)	NA	21 / 40 (52.5)	0.54 (0.24 - 1.21; 0.134)	0.61 (0.27 - 1.36; 0.227) ^m
<i>Clomipramine</i>	1 / 4 (25.0)	0.58 (0.08 - 4.14; 0.589)	NA	NA	NA	NA	NA	NA
<i>Duloxetine</i>	5 / 12 (41.7)	0.69 (0.29 - 1.67; 0.413)	0.65 (0.25 - 1.64; 0.358)	0.50 (0.20 - 1.29; 0.151)	NA	14 / 24 (58.3)	0.44 (0.16 - 1.23; 0.115)	0.19 (0.04 - 0.84; 0.029*) ⁿ
<i>Escitalopram</i>	12 / 42 (28.6)	0.51 (0.29 - 0.90; 0.021*)	0.44 (0.25 - 0.78; 0.005*)	0.46 (0.27 - 0.80; 0.006*)	0.30 (0.28 - 1.00; 0.050) ^o	40 / 84 (47.6)	0.42 (0.22 - 0.80; 0.008*)	0.27 (0.13 - 0.56; <0.001*) ^p
<i>Fluoxetine</i>	4 / 14 (28.6)	0.45 (0.17 - 1.19; 0.108)	0.30 (0.08 - 1.17; 0.082)	0.34 (0.11 - 1.05; 0.062)	NA	16 / 28 (57.1)	0.24 (0.08 - 0.73; 0.013*)	0.18 (0.05 - 0.70; 0.013*)
<i>Paroxetine</i>	16 / 41 (39.0)	0.69 (0.36 - 1.33; 0.262)	0.66 (0.38 - 1.13; 0.130)	0.57 (0.33 - 0.98; 0.041*)	0.62 (0.40 - 0.97; 0.036*) ^q	42 / 82 (51.2)	0.54 (0.31 - 0.94; 0.030*)	0.48 (0.26 - 0.89; 0.028*) ^r
<i>Sertraline</i>	7 / 21 (33.3)	0.58 (0.27 - 1.21; 0.147)	0.57 (0.29 - 1.12; 0.110)	0.63 (0.23 - 1.69; 0.357)	0.82 (0.34 - 1.98; 0.663) ^s	24 / 42 (57.1)	0.42 (0.18 - 0.98; 0.043*)	0.42 (0.19 - 0.91; 0.028*) ^t
<i>Hydroxyzine</i>	11 / 31 (35.5)	0.60 (0.33 - 1.08; 0.090)	0.43 (0.19 - 0.96; 0.040*)	0.46 (0.26 - 0.84; 0.012*)	NA	29 / 62 (46.8)	0.49 (0.24 - 0.99; 0.047*)	0.46 (0.22 - 0.99; 0.046*) ^u
FIASMA psycholeptic medications	4 / 13 (30.8)	0.68 (0.28 - 1.64; 0.387)	0.59 (0.26 - 1.35; 0.210)	NA	NA	8 / 26 (30.8)	0.82 (0.25 - 2.73; 0.746)	0.80 (0.21 - 2.98; 0.735) ^v
<i>Aripiprazole</i>	1 / 6 (16.7)	0.27 (0.04 - 1.95; 0.197)	NA	NA	NA	NA	NA	NA
<i>Chlorpromazine</i>	3 / 7 (42.9)	1.09 (0.48 - 2.52; 0.829)	NA	NA	NA	NA	NA	NA
FIASMA respiratory system medications	3 / 7 (42.9)	1.02 (0.33 - 3.18; 0.970)	0.68 (0.25 - 1.81; 0.439)	NA	NA	7 / 14 (50.0)	0.84 (0.22 - 3.26; 0.798)	NA
<i>Desloratadine</i>	3 / 7 (42.9)	1.02 (0.33 - 3.18; 0.970)	0.68 (0.25 - 1.81; 0.439)	NA	NA	7 / 14 (50.0)	0.84 (0.22 - 3.26; 0.798)	NA

^a Adjusted for age, cardiovascular disorders and diseases of the genitourinary system.

^b Adjusted for hospital, smoking, medication prescribed as part of a clinical trial or according to compassionate use, cardiovascular disorders, respiratory disorders, and diseases of the genitourinary system.

^c Adjusted for cardiovascular disorders and diseases of the genitourinary system, and endocrine disorders.

^d Adjusted for hospital, smoking, for diseases of the nervous system, respiratory disorders, and diseases of the genitourinary system.

^e Adjusted for cardiovascular disorders and diseases of the genitourinary system, and endocrine disorders.

- ^f Adjusted for hospital, smoking, for diseases of the nervous system, respiratory disorders, and diseases of the genitourinary system.
- ^g Adjusted for hospital, obesity, smoking, medication prescribed as part of a clinical trial or according to compassionate use, respiratory disorders, and diseases of the genitourinary system.
- ^h Adjusted for hospital, obesity, smoking, medication prescribed as part of a clinical trial or according to compassionate use, respiratory disorders, and diseases of the genitourinary system.
- ⁱ Adjusted for hospital.
- ^j Adjusted for age, sex, smoking, and mental disorders.
- ^k Adjusted for hospital.
- ^l Adjusted for age, sex, smoking, and mental disorders.
- ^m Adjusted for age, sex, hospital, smoking, medication prescribed as part of a clinical trial or according to compassionate use, neoplasms and diseases of the blood, diseases of the nervous system, digestive disorders, and endocrine disorders.
- ⁿ Adjusted for age, sex, hospital, other infectious diseases, cardiovascular disorders, respiratory disorders, and endocrine disorders.
- ^o Adjusted for age, sex, hospital, obesity, smoking, medication prescribed as part of a clinical trial or according to compassionate use, other infectious diseases, neoplasms and diseases of the blood, cardiovascular disorders, respiratory disorders, digestive disorders, diseases of the genitourinary system, endocrine disorders, and eye-ear-nose-throat disorders.
- ^p Adjusted for age, sex, hospital, obesity, smoking, medication prescribed as part of a clinical trial or according to compassionate use, neoplasms and diseases of the blood, digestive disorders, and diseases of the genitourinary system.
- ^q Adjusted for age, hospital, obesity, other infectious diseases, mental disorders, diseases of the nervous system, digestive disorders, diseases of the musculoskeletal system, genitourinary system, and endocrine disorders.
- ^r Adjusted for age, hospital, obesity, other infectious diseases, cardiovascular disorders, digestive disorders, and endocrine disorders.
- ^s Adjusted for age, sex, hospital, obesity, smoking, medication prescribed as part of a clinical trial or according to compassionate use, other infectious diseases, neoplasms and diseases of the blood, mental disorders, diseases of the nervous system, digestive disorders, diseases of the musculoskeletal system, diseases of the genitourinary system, endocrine disorders, and eye-ear-nose-throat disorders.
- ^t Adjusted for age, sex, hospital, smoking, medication prescribed as part of a clinical trial or according to compassionate use, other infectious diseases, mental disorders, diseases of the nervous system, respiratory disorders, and diseases of the genitourinary system.
- ^u Adjusted for age, hospital, smoking, other infectious diseases, neoplasms and diseases of the blood, diseases of the nervous system, cardiovascular disorders, respiratory disorders, and endocrine disorders.
- ^v Adjusted for age, sex, hospital, obesity, smoking, medication prescribed as part of a clinical trial or according to compassionate use, mental disorders, and endocrine disorders.
- * Two-sided p-value is significant (p<0.05).
Abbreviations: NA, not applicable; HR, hazard ratio; CI, confidence interval.

Table S3. Association between FIASMA medication use at baseline and the endpoint of intubation or death as compared with paracetamol use at baseline among patients hospitalized for severe COVID-19.

	Number of events / Number of patients	Crude Cox regression analysis	Multivariable Cox regression analysis	Analysis weighted by inverse-probability-weighting weights	Analysis weighted by inverse-probability-weighting weights adjusted for unbalanced covariates	Number of events / Number of patients in the matched groups	Univariate Cox regression in 1:1 or 1:2 ratio matched analytic samples	Cox regression in matched analytic samples adjusted for unbalanced covariates
	N / N (%)	HR (95% CI; p-value)	HR (95% CI; p-value)	HR (95% CI; p-value)	HR (95% CI; p-value)	N / N (%)	HR (95% CI; p-value)	HR (95% CI; p-value)
Any FIASMA medication	104 / 277 (37.5)	0.85 (0.65 – 1.12; 0.242)	0.69 (0.52 – 0.92; 0.010*)	0.63 (0.47 – 0.86; 0.003*)	0.65 (0.48 – 0.88; 0.005*) ^o	104 / 277 (37.5)	0.72 (0.55 – 0.94 ; 0.018*)	0.70 (0.52 – 0.94; 0.016*) ^p
Paracetamol	192 / 525 (36.6)	Ref.	Ref.	Ref.	Ref.	110 / 277 (39.7)	Ref.	Ref.
FIASMA Alimentary tract and metabolism medications	2 / 9 (22.2)	0.41 (0.10 - 1.69; 0.218)	0.12 (0.01 - 1.40; 0.091)	0.35 (0.08 - 1.49; 0.157)	0.26 (0.13 - 0.56; <0.001*) ^a	2 / 9 (22.2)	0.37 (0.08 - 1.76; 0.213)	NA
Paracetamol	192 / 525 (36.6)	Ref.	Ref.	Ref.	Ref.	8 / 18 (44.4)	Ref.	Ref.
FIASMA cardiovascular system medications	54 / 125 (43.2)	1.22 (0.83 - 1.79; 0.319)	0.76 (0.52 - 1.10; 0.141)	0.74 (0.40 - 1.36; 0.331)	0.71 (0.39 - 1.28; 0.253) ^b	54 / 125 (43.2)	0.86 (0.62 - 1.21; 0.397)	0.73 (0.51 - 1.03; 0.074) ^c
Paracetamol	192 / 525 (36.6)	Ref.	Ref.	Ref.	Ref.	71 / 250 (46.8)	Ref.	Ref.
FIASMA calcium channel blockers	38 / 97 (39.2)	0.86 (0.61 - 1.22; 0.392)	0.73 (0.50 - 1.06; 0.098)	0.60 (0.39 - 0.93; 0.021*)	0.64 (0.42 - 0.97; 0.037*) ^d	38 / 97 (39.2)	0.67 (0.46 - 0.98; 0.039*)	0.67 (0.45 - 1.00; 0.048*) ^e

Paracetamol	192 / 525 (36.6)	Ref.	Ref.	Ref.	Ref.	91 / 194 (46.9)	Ref.	Ref.
Other FIASMA cardiovascular system medications	19 / 34 (55.9)	1.88 (1.33 - 2.67; <0.001*)	1.02 (0.66 - 1.60; 0.918)	0.92 (0.53 - 1.59; 0.754)	1.19 (0.66 - 2.13; 0.563) ^f	19 / 34 (55.9)	0.74 (0.41 - 1.34; 0.322)	0.78 (0.38 - 1.59; 0.486) ^g
Paracetamol	192 / 525 (36.6)	Ref.	Ref.	Ref.	Ref.	33 / 68 (48.5)	Ref.	Ref.
FIASMA nervous system medications	61 / 175 (34.9)	0.77 (0.55 - 1.07; 0.116)	0.65 (0.46 - 0.91; 0.013*)	0.55 (0.36 - 0.83; 0.004*)	0.53 (0.36 - 0.78; 0.001*) ^h	61 / 175 (34.9)	0.72 (0.52 - 1.00; 0.047*)	0.63 (0.45 - 0.89; 0.008*) ⁱ
Paracetamol	192 / 525 (36.6)	Ref.	Ref.	Ref.	Ref.	136 / 350 (38.9)	Ref.	Ref.
FIASMA psychoanaleptic medications	59 / 169 (34.9)	0.77 (0.55 - 1.07; 0.120)	0.64 (0.45 - 0.91; 0.013*)	0.55 (0.38 - 0.80; 0.002*)	0.63 (0.45 - 0.87; 0.005*) ^j	59 / 169 (34.9)	0.70 (0.51 - 0.97; 0.031*)	0.53 (0.37 - 0.74; <0.001*) ^k
Paracetamol	192 / 525 (36.6)	Ref.	Ref.	Ref.	Ref.	134 / 338 (39.6)	Ref.	Ref.
FIASMA psycholeptic medications	4 / 13 (30.8)	0.59 (0.22 - 1.58; 0.290)	0.41 (0.13 - 1.27; 0.122)	0.35 (0.07 - 1.72; 0.194)	0.33 (0.12 - 0.87; 0.026*) ^l	4 / 13 (30.8)	0.54 (0.18 - 1.67; 0.288)	0.16 (0.00 - 10.45; 0.389) ^m
Paracetamol	192 / 525 (36.6)	Ref.	Ref.	Ref.	Ref.	13 / 26 (50.0)	Ref.	Ref.
FIASMA respiratory system medications	3 / 7 (42.9)	1.13 (0.36 - 3.53; 0.835)	0.97 (0.33 - 2.89; 0.962)	0.87 (0.25 - 3.06; 0.830)	0.19 (0.04 - 0.95; 0.043*) ⁿ	3 / 7 (42.9)	2.23 (0.45 - 11.14; 0.328)	NA
Paracetamol	192 / 525 (36.6)	Ref.	Ref.	Ref.	Ref.	3 / 14 (21.4)	Ref.	Ref.

^a Adjusted for age, sex, obesity, smoking, medication according to compassionate use or as part of a clinical trial, other infectious diseases, mental disorders, respiratory disorders, digestive disorders, diseases of the musculoskeletal system, diseases of the genitourinary system, and endocrine disorders.

^b Adjusted for hospital, medication according to compassionate use or as part of a clinical trial, and other infectious diseases.

^c Adjusted for age, hospital, obesity, smoking, other infectious diseases, mental disorders, cardiovascular disorders, respiratory disorders, digestive disorders, diseases of the genitourinary system, and endocrine disorders.

^d Adjusted for hospital, smoking, other infectious diseases, diseases of the musculoskeletal system, and endocrine disorders.

^e Adjusted for hospital, obesity, smoking, other infectious diseases, mental disorders, cardiovascular disorders, respiratory disorders, digestive disorders, diseases of the genitourinary system, and endocrine disorders.

^f Adjusted for age, hospital, mental disorders, cardiovascular disorders, digestive disorders, and diseases of the genitourinary system.

^g Adjusted for age, sex, hospital, obesity, smoking, medication according to compassionate use or as part of a clinical trial, neoplasms and diseases of the blood, mental disorders, cardiovascular disorders, respiratory disorders, digestive disorders, diseases of the musculoskeletal system, diseases of the genitourinary system, and endocrine disorders.

^h Adjusted for age, hospital, and dermatological disorders.

ⁱ Adjusted for age, sex, hospital, obesity, smoking, medication according to compassionate use or as part of a clinical trial, other infectious diseases, neoplasms, and diseases of the blood, mental disorders, diseases of the nervous system, cardiovascular disorders, digestive disorders, dermatological disorders, diseases of the genitourinary system, and endocrine disorders and eye-ear-nose-throat disorders.

^j Adjusted for age, sex, medication according to compassionate use or as part of a clinical trial, mental disorders, diseases of the nervous system, and dermatological disorders.

^k Adjusted for age, sex, obesity, smoking, medication according to compassionate use or as part of a clinical trial, other infectious diseases, neoplasms and diseases of the blood, mental disorders, diseases of the nervous system, cardiovascular disorders, digestive disorders, dermatological disorders, diseases of the genitourinary system, and endocrine disorders.

^l Adjusted for age, sex, hospital, obesity, other infectious diseases, mental disorders, diseases of the nervous system, respiratory disorders, digestive disorders, diseases of the genitourinary system, endocrine disorders, and eye-ear-nose-throat disorders.

^m Adjusted for age, sex, hospital, obesity, other infectious diseases, neoplasms and diseases of the blood, mental disorders, diseases of the nervous system, cardiovascular disorders, respiratory disorders, and digestive disorders.

ⁿ Adjusted for age, sex, hospital, obesity, medication according to compassionate use or as part of a clinical trial, other infectious diseases, diseases of the nervous system, diseases of the genitourinary system, and endocrine disorders.

^o Adjusted by age, any medication according to compassionate use or as part of a clinical trial, other infectious diseases, diseases of the nervous system, cardiovascular disorders, and diseases of the genitourinary system

^p Adjusted for age, sex, hospital, smoking, medication according to compassionate use or as part of a clinical trial, other infectious diseases, mental disorders, digestive disorders, diseases of the genitourinary system, and endocrine disorders.

* Two-sided p-value is significant ($p < 0.05$).

Abbreviations: NA, not applicable; HR, hazard ratio; CI, confidence interval.

Table S4. Association between FIASMA medication use at baseline and the composite endpoint of intubation or death among patients hospitalized for severe COVID-19, while considering venlafaxine, citalopram, and mirtazapine as FIASMAs (N=2,846).

	Number of events / Number of patients	Crude Cox regression analysis	Multivariable Cox regression analysis	Analysis weighted by inverse-probability-weighting weights	Analysis weighted by inverse-probability-weighting weights adjusted for unbalanced covariates ^a	Number of events / Number of patients in the matched group	Univariate Cox regression in a 1:1 ratio matched analytic sample	Cox regression in a 1:1 ratio matched analytic sample adjusted for unbalanced covariates ^b
	N / N (%)	HR (95% CI; p-value)	HR (95% CI; p-value)	HR (95% CI; p-value)	HR (95% CI; p-value)	N / N (%)	HR (95% CI; p-value)	HR (95% CI; p-value)
No FIASMA medication	1,059 / 2,559 (41.4)	Ref.	Ref.	Ref.	Ref.	141 / 287 (49.1)	Ref.	Ref.
Any FIASMA medication	109 / 287 (38.0)	0.73 (0.60 – 0.89; 0.002*)	0.67 (0.54 – 0.84; <0.001*)	0.55 (0.45 – 0.68; <0.001*)	0.55 (0.45 – 0.68; <0.001*)	109 / 287 (38.0)	0.59 (0.45 – 0.78; <0.001*)	0.60 (0.45 – 0.79; <0.001*)

^a All covariates were balanced.

^b Adjusted for hospital.

* Two-sided p-value is significant (p<0.05).

Abbreviations: HR, hazard ratio; CI, confidence interval.

Table S5. Association between FIASMA medication use at baseline and the composite endpoint of intubation or death among all patients hospitalized for COVID-19 whatever their baseline clinical severity (N=14,429).

	Number of events / Number of patients	Crude Cox regression analysis	Multivariable Cox regression analysis	Analysis weighted by inverse-probability-weighting weights	Analysis weighted by inverse-probability-weighting weights adjusted for unbalanced covariates	Number of events / Number of patients in the matched groups	Univariate Cox regression in a 1:1 ratio matched analytic sample	Cox regression in a matched analytic sample adjusted for unbalanced covariates
	N / N (%)	HR (95% CI; p-value)	HR (95% CI; p-value)	HR (95% CI; p-value)	HR (95% CI; p-value)	N / N (%)	HR (95% CI; p-value)	HR (95% CI; p-value)
No FIASMA medication	1597 / 13065 (11.7)	Ref.	Ref.	Ref.	Ref.	247 / 824 (30.0)	Ref.	Ref.
Any FIASMA medication	192 / 824 (23.3)	1.66 (1.27 - 2.17; <0.001*)	0.75 (0.57 - 0.99; 0.041*)	0.67 (0.57 - 0.78; <0.001*)	0.82 (0.71 - 0.96; 0.013*) ^a	192 / 824 (23.3)	0.67 (0.52 - 0.87; 0.003*)	0.67 (0.52 - 0.87; 0.003*)

^a Adjusted for age, medication prescribed as part of a clinical trial or according to compassionate use, mental disorders, cardiovascular disorders, respiratory disorders, diseases of the genitourinary system, and endocrine disorders.

* Two-sided p-value is significant (p<0.05).

Abbreviations: NA, not applicable; HR, hazard ratio; CI, confidence interval.

Table S6. Association between FIASMA medications with low or no affinity for Sigma-1-receptors (i.e., amlodipine, paroxetine, duloxetine, aripiprazole) and the composite endpoint of intubation or death among adult patients hospitalized for severe COVID-19.

	Number of events / Number of patients	Crude Cox regression analysis	Multivariable Cox regression analysis	Analysis weighted by inverse- probability- weighting weights	Analysis weighted by inverse- probability- weighting weights adjusted for unbalanced covariates ^a	Number of events / Number of patients in the matched groups	Univariate Cox regression in a 1:1 ratio matched analytic sample	Cox regression in a 1:1 ratio matched analytic sample adjusted for unbalanced covariates ^b
	N / N (%)	HR (95% CI; p- value)	HR (95% CI; p- value)	HR (95% CI; p- value)	HR (95% CI; p- value)	N / N (%)	HR (95% CI; p- value)	HR (95% CI; p- value)
No FIASMA medication	1064 / 2569 (41.4)	Ref.	Ref.	Ref.	Ref.	77 / 145 (53.1)	Ref.	Ref.
FIASMA medications with low or no affinity for Sigma- 1-receptors	55 / 145 (37.9)	0.76 (0.555 – 1.06; 0.108)	0.65 (0.49 – 0.87; 0.004*)	0.56 (0.42 – 0.74; <0.001*)	0.65 (0.49 – 0.85; 0.002*)	55 / 145 (37.9)	0.47 (0.31 – 0.69; <0.001*)	0.46 (0.32 – 0.68; <0.001*)

* Two-sided p-value is significant (p<0.05).

^a Adjusted for cardiovascular disorders, diseases of the genitourinary system, endocrine disorders, and eye-ear-nose-throat disorders.

^b Adjusted for hospital, mental disorders, and respiratory disorders.

Abbreviations: HR, hazard ratio; CI, confidence interval.

