



**HAL**  
open science

## Gene expression and response prediction to amisulpride in the OPTiMiSE first episode psychoses

Réjane Troudet, Wafa Bel Haj Ali, Delphine Bacq-Daian, Inge Winter Van Rossum, Anne Boland-Auge, Christophe Battail, Caroline Barau, Dan Rujescu, Philip Mcguire, René Kahn, et al.

► **To cite this version:**

Réjane Troudet, Wafa Bel Haj Ali, Delphine Bacq-Daian, Inge Winter Van Rossum, Anne Boland-Auge, et al.. Gene expression and response prediction to amisulpride in the OPTiMiSE first episode psychoses. *Neuropsychopharmacology*, 2020, 45 (10), pp.1637-1644. 10.1038/s41386-020-0703-2 . inserm-03130159

**HAL Id: inserm-03130159**

**<https://inserm.hal.science/inserm-03130159v1>**

Submitted on 3 Feb 2021

**HAL** is a multi-disciplinary open access archive for the deposit and dissemination of scientific research documents, whether they are published or not. The documents may come from teaching and research institutions in France or abroad, or from public or private research centers.

L'archive ouverte pluridisciplinaire **HAL**, est destinée au dépôt et à la diffusion de documents scientifiques de niveau recherche, publiés ou non, émanant des établissements d'enseignement et de recherche français ou étrangers, des laboratoires publics ou privés.

## **Gene expression and response prediction to amisulpride in the OPTiMiSE first episode psychoses**

Réjane Troudet, Pharm.D., Ph.D.<sup>1,2,3</sup>, Wafa Bel Haj Ali, Ph.D.<sup>1,2,3</sup>, Delphine Bacq-Daian, Ph.D.<sup>4</sup>, Inge Winter van Rossum, Ph.D.<sup>5</sup>, Anne Boland-Auge, Ph.D.<sup>4</sup>, Christophe Battail, Ph.D.<sup>4</sup>, Caroline Barau, M.D., Ph.D.<sup>6</sup>, the OPTiMiSE study group, Dan Rujescu, M.D., Ph.D.<sup>7</sup>, Philip McGuire, M.D., Ph.D.<sup>8</sup>, René S Kahn, M.D., Ph.D.<sup>5,9</sup>, Jean-François Deleuze, Ph.D.<sup>4</sup>, Marion Leboyer, M.D., Ph.D.<sup>1,2,3,10</sup>, and Stéphane Jamain, Ph.D.<sup>1,2,3,\*</sup>

<sup>1</sup>Inserm U955, Psychiatrie Translationnelle, Créteil, France;

<sup>2</sup>Université Paris Est, Faculté de Médecine, Créteil, France;

<sup>3</sup>Fondation FondaMental, Créteil, France;

<sup>4</sup>Centre National de Recherche en Génomique Humaine (CNRGH), Institut de Biologie François Jacob, CEA, Université Paris-Saclay, Evry, France;

<sup>5</sup>Department of Psychiatry, Brain Center Rudolf Magnus, Utrecht, Netherlands;

<sup>6</sup>AP-HP, Hôpital H. Mondor – A. Chenevier, Plateforme de Ressources Biologiques, Créteil, France;

<sup>7</sup>Department of Psychiatry, University Hospital Halle, Halle, Germany;

<sup>8</sup>Department of Psychosis Studies, Institute of Psychiatry, Psychology and Neuroscience, King's College London, London, UK;

<sup>9</sup>Department of Psychiatry, Icahn School of Medicine at Mount Sinai, New York, NY, USA;

<sup>10</sup>AP-HP, DHU Pe-PSY, Pôle de psychiatrie et d'addictologie des Hôpitaux Universitaires Henri Mondor, Créteil, France.

\*Corresponding author:

Dr Stéphane Jamain

Inserm U955, Psychiatrie Translationnelle

Faculté de Médecine, 8 rue du Général Sarrail, Créteil, 94000, France.

Phone: +33 1 49 81 37 75

Fax: +33 1 49 81 35 88

E-mail: [stephane.jamain@inserm.fr](mailto:stephane.jamain@inserm.fr)

## **Abstract**

A fundamental shortcoming in the current treatment of schizophrenia is the lack of valid criteria to predict who will respond to antipsychotic treatment. The identification of blood-based biological markers of the therapeutic response would enable clinicians to identify the subgroup of patients in whom conventional antipsychotic treatment is ineffective and offer alternative treatments. As part of the Optimization of Treatment and Management of Schizophrenia in Europe (OPTiMiSE) programme, we conducted an RNA-Seq analysis on 188 subjects with first episode psychosis, all of whom were subsequently treated with amisulpride for 4 weeks. We compared gene expression on total RNA from patients' blood before and after treatment and identified 32 genes for which the expression changed after treatment in good responders only. These findings were replicated in an independent sample of 24 patients with first episode psychosis. Six genes showed a significant difference in expression level between good and poor responders before starting treatment, allowing to predict treatment outcome with a predictive value of 93.8% when combined with clinical features. Collectively, these findings identified new mechanisms to explain symptom improvement after amisulpride medication and highlight the potential of combining gene-expression profiling with clinical data to predict treatment response in first episode psychoses.

## **Introduction**

Since their introduction in the 1950s, antipsychotic drugs are the medication of choice in the treatment of psychoses. However, despite the subsequent introduction of many new antipsychotics, about one third of patients are relatively unresponsive to treatment [1-3]. Inter-individual differences in clinical outcome following antipsychotic medication depends on many factors [4]. However, the basis of the heterogeneous response to treatment remains unclear. The lack of treatment algorithms or biomarker-based guidelines results in a trial-and-error process to identify the adequate treatment at the optimal dose with a minimum of side-effects for each patient. As a result, determining whether a patient will respond to antipsychotics involves the careful evaluation of at least 2 courses of different treatments, which substantially delays the provision of alternative treatments such as clozapine [5].

Over the last decades, considerable research efforts have focused on whether genetic information could be helpful to predict patient's response as well as adverse effects to a given antipsychotic. Pharmacogenetic studies have mainly focused on specific candidate genes involved in the pharmacodynamics and in the pharmacokinetics of antipsychotic drugs or on the primary targets of antipsychotics [6]. Although many genetic variants have been reported as associated with response to treatment, none of these studies have led to the identification of a biomarker robust enough to be applicable in clinical practice [7-13]. More recently, genome-wide association studies (GWAS) of antipsychotic treatment response have used clinical scales or neurocognitive tests as outcome measurements, but without consistent findings and no functional validation of associated variants [14-22]. Transcriptome analysis provides an alternative method of identifying biomarkers of treatment response, but to date, studies that used this approach had a limited statistical power [23-25].

We sought to address these issues by conducting an RNA-seq analysis on 188 patients with first episode psychosis from the OPTiMiSE cohort [26,27]. We examined gene expression at baseline and after 4 weeks of treatment with a single antipsychotic medication, i.e. amisulpride, using peripheral blood mononuclear cells (PBMCs). Genes that were differentially expressed in good responders only were validated in an independent sub-sample of the OPTiMiSE population and we used basal expression of these genes in combination with clinical data to predict treatment response.

## **Methods and Materials**

- **Subjects**

The cohort analysed in this study was obtained from the OPTiMiSE clinical trial (<http://www.optimisetrial.eu>) [27]. This trial is registered with ClinicalTrials.gov under the name “Optimization of Treatment and Management of Schizophrenia in Europe (OPTIMISE)”, number NCT01248195. After providing written informed consent, 491 patients with a first episode psychosis were included and 453 started medication. All inclusion sites obtained ethical approval and this research was approved by an Institutional Review Board. One-hundred-and-eighty-eight individuals from this cohort were included in our study (Supplementary Figure S1). All patients were diagnosed with schizophrenia, schizophreniform disorder or schizoaffective disorder according to the Diagnostic and Statistical Manual of Mental Disorders, Fourth Edition (DSM-IV) and confirmed on the basis of the Mini International Neuropsychiatric Interview Plus (M.I.N.I. Plus) [28] (Supplementary Table 1). At baseline, patients were medication-naïve or minimally-treated (any antipsychotic medication used for more than 2 weeks in the previous year or for a total of 6 weeks in their lifetime) and were ill for no longer than 2 years. Only subjects involved in the single-treatment arm (phase 1) of the trial

were considered for this study [27]. All patients were treated for 4 weeks with amisulpride (200–800 mg/day orally). At the end of the 4-week treatment, the blood concentration of antipsychotic used has been determined. This measurement provided a reliable indication of the treatment compliance of individual patients.

- DNA extraction and genotyping

Blood sample for DNA extraction was available for 162 subjects out of the 188 who were included in the RNA-Seq analysis. Genomic DNA was extracted from whole blood in EDTA tubes or buffy coat samples using the Maxwell® 16 Blood DNA Purification Kit (Promega Corp., Madison, USA) according to the manufacturer's standard protocols. DNA quality control was performed by checking the absence of PCR inhibitors and evaluating the DNA integrity by electrophoresis migration (4200 TapeStation, Agilent Technologies Inc., Santa Clara, CA, U.S.A.). Genotyping of 954,212 single nucleotide polymorphisms (SNPs) was performed using the OmniExpressExome-8v1-4\_A1 beadchips (Illumina Inc.), according to the manufacturer's protocol. In order to determine the genetic ancestry of subjects, the genotypic data of 90,468 relevant SNPs have been merged with those from 395 individuals of the HapMap populations as described elsewhere [29]. We performed a principal component analysis and fixed a threshold on the two first components to distinguish between individuals with European or other ancestry in our cohort.

- RNA extraction

Total RNA was extracted from blood samples, collected in PAXgene Blood RNA tubes, with the PAXgene Blood miRNA Kit (QIAGEN GmbH, Hilden, Germany) using a standard protocol on QIAcube robot (QIAGEN). A DNase digestion procedure was

added after extraction. Total RNA was purified using the RNA Clean & Concentrator™-5 kit following the manufacturer's instructions (Zymo Research Corp., Irvine, USA). RNA quantification was performed on a NanoDrop™ 8000 spectrophotometer, in duplicate. The quality and integrity of the RNA samples were assessed using an Agilent Bioanalyzer 2100 and the RNA6000 Nano Labchip kit (Agilent Technologies). Only samples with an RNA integrity number (RIN) higher than 7 were selected. Three hundred and seventy-six RNA samples fulfilled quality control criteria for RNA-seq analyses, corresponding to two RNA samples (one at inclusion and one after 4 weeks of treatment) for 188 subjects. Forty-eight additional RNAs were available for replication studies, in 24 independent subjects (Supplementary Figure S1).

- RNA sequencing

#### Library preparation and sequencing

All libraries were prepared using the Illumina TruSeq Stranded Total RNA with Ribo-Zero Globin kit (Illumina Inc., San Diego, CA, U.S.A.), which removes ribosomal RNA and globin mRNA. Libraries were prepared using one microgram of total RNA as initial input and following the standard protocols. After library quality control, 2x100 bp paired-end (PE) sequencing was performed on a HiSeq4000 system (Illumina), pooling a maximum of 6 samples on each lane, in order to reach 40 to 50 millions of PE-reads for each sample. The Illumina pipeline was used to generate raw RNA sequencing data (fastq files) for each sample.

#### Quality control and reads mapping

Sequence quality controls were performed, using FastQC and in-house bioinformatic pipelines, from a sampling of 2x10 million reads in order to assess the levels of read



duplicates, adapters, remaining rRNA and the GC content. Reads were trimmed for adapters and low-quality bases (Phred quality score <30) using Trimmomatic software (v.0.32). Reads were then mapped to the Genome Reference Consortium human genome assembly 37 (GRCh37) reference genome (hg19) using Tophat software (v.2.0.13). Read mapping quality was assessed using RNA-SeQC software. Then, gene-level quantification in read counts was performed by HTSeq software (v.0.6.1), using gene annotation from Ensembl v.86. All downstream analyses were conducted using the statistical software R (v.3.2.4) and Bioconductor R packages.

### Filtering and Normalization

Genes with counts-per million (cpm) below 1 in more than two third of the samples were considered unexpressed and removed from the analysis using edgeR package (v.3.12.1). Raw gene counts matrix has been normalized to account for differences in sequencing depth and RNA composition using the “median ratio” method implemented in the DESeq2 package (v.1.16.1). To avoid batch effects as confounding factors, all subjects had their 2 time-points in a same batch. Considering the whole normalized set of expressed genes, principal component analysis (PCA) has been performed using the FactoMineR package (v.1.39) to evaluate the efficacy of DESeq2 normalization and for identifying outliers.

- Validation of expression data by quantitative reverse transcription polymerase chain reaction (qRT-PCR)

Five hundred nanograms of total RNA was reverse-transcribed using the High-Capacity cDNA Reverse Transcription kit following standard protocol (Thermo Fisher Scientific, Waltham, MA, U.S.A.). Mixtures of the cDNAs and the TaqMan Universal

PCR Master Mix were further loaded in the 384-well low density TaqMan array microfluidic cards (Thermo Fisher Scientific), containing probes and primers for each selected gene (Supplementary Table 2). Real-time PCR reactions were then carried out in an ABI Prism 7900HT sequence detection system (Thermo Fisher Scientific) using manufacturer's instructions. Each assay was carried out in duplicate and threshold cycle ( $C_t$ ) values were automatically calculated by the SDS 2.2 software (Thermo Fisher Scientific), after having manually set the analysis threshold. Two reference genes (*18S* and *GUSB*) with various expression levels were included in the analyses to perform a relative RNA quantification, using the most suitable reference gene.

- Statistical analyses

All variables normally distributed were expressed as mean  $\pm$  standard deviation (SD) and comparisons between conditions were examined by t-tests and one-way analyses of variance (ANOVAs). Not normally distributed variables were expressed as median and interquartile range (IQR) and between-group comparisons were analysed by Mann-Whitney and Kruskal-Wallis tests.

Differential expression before and after treatment was performed by a paired-analysis with the DESeq function and the Wald test using two explanatory factors in the experimental design, participants and time (two time-points per subject). For gene expression levels before treatment, we corrected putative bias from library preparation batches as well as from the inclusion site. We then compared good and poor responders using the same function and a statistical model adjusted for age, sex, ancestry, DUP, positive PANSS score at inclusion and centre in which individuals had been recruited, these features either having been shown to be significantly different

between future good and poor responders (Supplementary Table 1) or being putative confounding factors. Significantly DEGs between the two-time points were defined as having a Benjamini-Hochberg (BH) corrected p-value lower than 0.1.

For the qRT-PCR analysis,  $\Delta C_t$  values of each gene of interest were calculated before and after treatment and then normalized by subtracting the  $\Delta C_t$  values of the reference gene to generate  $\Delta\Delta C_t$  values. To select genes with significant expression changes after treatment, the medians of fold changes ( $2^{-\Delta\Delta C_t}$ ) were subsequently compared to a reference (Me=1) using Wilcoxon Rank Sum Test, and an adjusted p-value below 0.1 was considered to be significant.

Receiver operating characteristic (ROC) curves were drawn using the pROC package (v.1.14.0) to assess the performance of the treatment response prediction.

The statistical power was estimated using the PROPER package (v.1.14.1) [30] with 1000 simulations based on lymphoblastoid cell lines expression data from CEU individuals of the HapMap project.

## Results

*Genes are differentially expressed after amisulpride treatment in good responders only*

There is no consensus in defining treatment response in schizophrenia, limiting research and clinical translation [31]. In the OPTiMiSE cohort, we observed that the distribution of the total PANSS score change over 4 weeks of treatment revealed an admixture of two subpopulations with a Gaussian distribution (Figure 1a). In this model, 56% were good responders, with a mean reduction of total PANSS score of 36.3% (SD=12.1), and 44% were poor responders, with a mean PANSS total reduction of 13.0% (SD=18.5). The intersection of the two subpopulations was around 20% reduction in total PANSS score. We thus used this threshold to distinguish between

good (N=113) and poor (N=75) responders in our study. Note that good responders were slightly older than poor responders with a lower duration of untreated psychosis and more positive symptoms (Supplementary Table 1).

In order to identify molecular mechanisms associated with treatment outcome, we compared gene expression levels at baseline and after 4 weeks of treatment with amisulpride. We thus conducted an RNA-seq analysis before and after treatment on total RNA from PBMCs of 188 subjects. We generated an average of 47 million 100bp paired-end reads per sample. After normalization and quality control, 16,204 genes were expressed in PBMCs before and after treatment. Visual inspection of the first two dimensions of the PCA plot performed on the whole set of genes revealed a homogeneous cluster (Supplementary Figure S2), showing that the expression level of the majority of genes does not vary overtime. However, comparison of gene expression levels before and after treatment revealed that good responders only showed 32 DEGs that survived to BH-correction for multiple testing when using an FDR threshold of 0.1. Nine of these genes were up-regulated and 23 were down-regulated (Figure 1b, Table 1). Note, 17 out of these 32 genes had already been reported to be differentially expressed in brain or blood from patients with schizophrenia or after antipsychotic medication (Figure 1c). Although the population of poor responders was smaller than the one of good responders, we estimated that we had a statistical power of 92% to detect a fold change of 1.06, which was the minimum difference that we observed in the 32 genes differentially expressed after treatment in good responders. This suggests that the difference observed between good and poor responders resulted from the response status.

To validate these DEGs, we used qRT-PCR in 24 independent subjects from the OPTiMiSE cohort, who were not included in the RNA-seq analyses and who had more than 20% improvement in total PANSS score after treatment (Supplementary Figure S1). We selected only brain-expressed protein-coding genes that were differentially expressed after treatment in good responders only. In addition, we restricted our selection to genes for which the expression change was correlated with symptom improvement (Table 1). Although they did not show an FDR lower than 0.1 in poor responders, three genes (*FAT1*, *FBXL13* and *P2RY12*) were excluded because they had a fold change close to those of good responders and a nominal p-value lower than 0.05. In addition, two genes (*P4HA2* and *TRPC6*) were removed from replication studies because they were not detectable by qRT-PCR. Eleven genes (*ACSL5*, *ALPL*, *CA4*, *DGAT2*, *DHRS13*, *GALNT14*, *HOMER3*, *KAZN*, *KIAA0319*, *SLC4A4* and *WLS*) were thus tested in the replication sample. Despite a small sample size limiting our statistical power (80% of probability of detecting a fold change higher than 1.13 or lower than 0.88), 6 genes (*ALPL*, *CA4*, *DHRS13*, *GALNT14*, *KAZN* and *HOMER3*) showed a significant difference in expression levels after treatment (Table 1).

#### *Gene expression level at baseline predicts treatment response*

To test whether the genes that were differentially expressed in the replication sample could be used as biomarkers to predict treatment response, we compared their expression levels before treatment between patients who will respond to treatment (n=113) and those who will not (n=75). In addition to the 6 genes (*ALPL*, *CA4*, *DHRS13*, *GALNT14*, *HOMER3* and *KAZN*) that were differentially expressed in the replication sample, we included 4 genes (*ACSL5*, *DGAT2*, *KIAA0319* and *WLS*) for which the expression fold-changes were similar between the RNA-Seq and the qRT-

PCR analyses (Table 1). Six out of the 10 genes (*ALPL*, *CA4*, *DHRS13*, *DGAT2*, *HOMER3* and *WLS*) were significantly overexpressed in responders (Table 2). We then estimated the expression level-based predictive performance for these 6 genes. Area under the curve (AUC) varied between 0.589 and 0.634 according to the gene (Table 3). Ten-thousand label permutations among the 188 individuals showed this prediction was significantly higher than random prediction for the 6 genes. As we observed clinical differences between future good and poor responders, we adjusted our model in a multivariate analysis including the age at inclusion, the sex, the duration of untreated psychosis (months) and the positive PANSS score at inclusion. Addition of clinical criteria improved our models for the 6 genes (Table 3). Note, the predictive values combining gene expression and clinical data for each gene was higher than those calculated for gene expression alone or clinical data alone. Finally, we computed a multivariate model considering the expression level of the 6 genes with clinical data and estimated that our model was able to discriminate between good and poor responders with 93.8% chance. As observed on Figure 2, the combination of both gene expression level at inclusion and clinical features at inclusion considerably improve the overall performance of models based only on gene expression ( $Z=4.82$ ,  $p=7 \times 10^{-7}$ ) or on clinical data alone ( $Z=6.14$ ,  $p=4 \times 10^{-10}$ ), showing the importance of combining clinical and biological data to predict treatment response in first episode psychoses.

## **Discussion**

Our first hypothesis was to test whether amisulpride would change gene expression differently between good and poor responders to treatment. Consistently with previous studies, we have been able to distinguish good from poor responders using a threshold of 20% change in the total PANSS score after 4 weeks of treatment [32-35]. We then

found that only good responders showed treatment-associated DEGs, suggesting that antipsychotic medication, when efficient, can affect gene expression in peripheral mononuclear cells. Although similar results have previously been reported [23-25,36,37], we are the first to conduct a study on a large homogeneous cohort of patients, all treated with the same antipsychotic medication, and to have replicated our results on an independent sample.

Our second hypothesis was to determine whether genes for which the expression level changes after treatment in good responders might be used to predict treatment outcome. Six out of the 10 DEGs that we tested showed an overexpression at inclusion in patients whose symptomatology improved after 4-week treatment. This is consistent with data from previous studies using other antipsychotic medications, reporting that genes overexpressed in subjects with schizophrenia when compared with controls, were downregulated after antipsychotic medication [23,24]. As expected, the six genes that we identified in our cohort were downregulated after treatment, suggesting that antipsychotic medication may normalize the altered expression of genes implicated in schizophrenia.

The 4 genes for which we confirmed the differential expression by replication on an independent sample had previously been reported as being differentially expressed in brain of patients with schizophrenia (Figure 1c) [24,38-46]. In particular, *ALPL* has been previously reported to be overexpressed in amygdala [38] of individuals with schizophrenia as well as in blood of drug-naïve patients [46]. Consistently with what we observed in our cohort, its expression has been shown to decrease after treatment with different atypical antipsychotics [23], suggesting its expression level might be used for treatment response prediction irrespective of the drugs taken by affected individuals. Moreover, we observed similar predictive values for the four replicated genes (*ALPL*,

*DHRS13*, *HOMER3* and *CA4*) as well as for 2 additional genes (*DGAT2* and *WLS*) that were differentially expressed at inclusion between the future good and poor responders. For all of them, we were able to increase the accuracy of our models combining clinical data and gene expression at inclusion. Although the proteins encoded by these genes were not known to interact together or to be involved in a single functional pathway, the best model was observed when combining the expression level of the six genes and was improved again when we added clinical features. These results are consistent with the polygenic hypothesis of schizophrenia and demonstrate the importance of combining biological and clinical markers to develop precision medicine in psychiatry.

Few information was available on the function of *DHRS13* and *CA4*, except the first belongs to the short chain deshydrogenase/reductase enzyme family [47] and the latter encodes a carbonic anhydrase expressed at apical surface of several cell types, including brain capillaries [48]. Nevertheless, we noticed that *CA4* may contribute to the extracellular buffering after synaptic transmission in hippocampal slices [49]. Similarly, there is few information on *WLS* and *DGAT2*. Note that the protein encoded by *DGAT2* catalyses the final reaction in the synthesis of triglycerides [50]. An overexpression of this gene may thus partly explain the metabolic syndrome frequently observed in individuals with psychosis [51] even in drug-naïve patients with first-episode schizophrenia [52]. In contrast, there is a body of literature supporting the role of *HOMER3* and *ALPL*, in schizophrenia treatment. Homer proteins are enriched at the postsynaptic density of the glutamatergic neurons and directly bind the metabotropic glutamate (mGlu) receptors that are more and more investigated as novel drug targets for this disease [53]. *HOMER1* and *HOMER3* proteins form a tetrameric structure that interact with *SHANK* proteins and the mGlu receptors, serving as a structural



framework for the postsynaptic density, essential to maintain the dendritic spine structure and synaptic function [54]. Interestingly, overexpression of *Homer1a* in basal and lateral nucleus of the amygdala impaired auditory feared conditioning and reduce social interaction in rats [55], two core phenotypes for animal models of schizophrenia. By decreasing the expression of *HOMER3*, amisulpride may thus act on the different groups of mGlu receptors and improve psychotic and cognitive symptoms in individuals with first episode psychosis.

*ALPL* is the only gene that has been previously reported with a decreased expression after antipsychotic treatment in medication-naïve patients with schizophrenia [23]. *ALPL*, encodes a member of the tissue-nonspecific alkaline phosphatase family and is ubiquitously expressed. In human, it is expressed at synapse to regulate the dopamine, serotonin, norepinephrine, and  $\gamma$ -amino butyric acid (GABA) syntheses in cerebral cortex, by dephosphorylating the active form of vitamin B6, the pyridoxal phosphate (PLP), into pyridoxal (PL) [56]. *ALPL* alteration is also associated with purinergic signalling dysregulation [57], which may be involved in psychiatric disorders [58]. A down-regulation of *ALPL* after treatment may thus affect neuron proliferation or decrease the biosynthesis of specific neurotransmitters, whose dysregulation is known to be a core component of schizophrenia symptoms. Its implication in the synthesis of various neurotransmitters may explain the improvement of both negative and positive symptoms observed in good responders treated with amisulpride.

Although there is still a debate on how much the peripheral changes might reflect brain processes [59-61], we can speculate that the peripheral down-regulation of *ALPL*, *CA4*, *DGAT2*, *DHRS13*, *HOMER3* and *WLS* observed in the blood of antipsychotic-treated patients may reflect their differential expression in the brain. Their blood expression level might thus be used as a biomarker to distinguish individuals for whom

amisulpride will have the best efficiency from those who may benefit from other antipsychotics. We have recently shown that change from amisulpride to olanzapine did not improve outcome for most of the patients [26]. These biomarkers may thus help in selecting patients to treat earlier with clozapine. Further replications on independent cohorts are now needed to confirm our results and determine if our biomarker-based treatment response prediction might be relevant for other antipsychotic medications.

Altogether, our results identified new mechanisms to explain symptom improvement after amisulpride medication and propose new blood biomarkers that, in combination with selected clinical symptoms, may help in predicting treatment outcome in first episode psychoses.

## **Funding and disclosure**

This work was supported by the European Commission Seventh Framework Program (HEALTH-F2-2010-242114) and the Investissements d'Avenir program managed by the Agence Nationale pour la Recherche (ANR) under reference ANR-11-IDEX-0004-02 (Labex BioPsy). This work also received financial support from the Institut National pour la Santé et la Recherche Médicale (Inserm); the Fondation FondaMental; the Commissariat à l'énergie atomique et aux énergies alternatives (CEA) and the Fondation pour la Recherche Médicale (FRM Espoirs de la Recherche 2015, FDM20151234954 to RT). The Jamain's team is affiliated with the Paris School of Neuroscience (ENP) and the Bio-Psy Laboratory of Excellence.

The Authors, including the contributing members of the OPTiMiSE Study Group, have declared that they have no competing financial interests in relation to the work described in this study.

## **Acknowledgments**

We are very grateful to patients for their participation.

We thank Bertrand Fin, Aurélie Krol, Claire Mulot, Magali Nacfer, Aurore Hattabi, Stefanie Wojciech, the Centre universitaire des Saints-Pères (Prof. P. Beaune), and the Biological Resources Platform (Prof. B. Ghaleh) of Mondor Hospital for technical assistance. We thank Eric Bonnet (CNRGH, CEA) for his help in RNA-seq analyses.

## **Author contributions**

S.J. and M.L. designed the study with the help of J.F.D. for RNA-Seq study. R.T., C.Bar., C.Bat., D.B.D. and A.B.A. generated RNA-Seq data. R.T., W.B.H.A. and S.J. conducted RNA-Seq analyses and performed statistical analyses. I.W.v.R., D.R., P.M.,

R.S.K., M.L. and the OPTiMiSE study group designed, collected and analysed clinical data, with the help of S.J., R.T. and C.Bar. for biological samples collection. S.J., R.T., A.B.A., C.Bat., D.B.D., P.M., J.F.D., I.W.v.R. and M.L. wrote the article.

*Composition of the OPTiMiSE study group:*

René S Kahn, Iris E Sommer, Inge Winter-van Rossum, Metten Somers, Paula C Ywema, Shitisj Kapur, Philip McGuire, Marion Leboyer, Andreas Meyer-Lindenberg, Shon W Lewis, Stefan Leucht, Celso Arango, Wolfgang W Fleischhacker, Anne Lotte Meijering, Jocelyn Petter, Resy Van de Brug, Joost Schotsman, Jildou Zwerver, Jos Peuskens, Marc De Hert, Erik Thys, Lucho G Hranov, Valentin Hranov, Jan Libiger, Richard Köhler, Pavel Mohr, Birte Glenthoj, Brian Broberg, Signe Düring, Lone Baandrup, Stéphane Jamain, Stephan Heres, Dan Rujescu, Ina Giegling, Mark Weiser, Mor Bar Heim, Michael Davidson, Silvana Galderisi, Paola Bucci, Armida Mucci, Janusz Rybakowski, Agnieszka Remlinger-Molenda, Ilan Gonen, Paull Radu, Marina Díaz-Marsá, Alberto Rodriguez, Tomas Palomo, Roberto Rodriguez-Jimenez, Paz García-Portilla, Miquel Bernardo, Julio Bobes, Christina Vilares Oliveira, Gregor Berger, Claudia Wildt, Paola Dazzan, Roccio Perez-Iglesias, Richard Drake, Sarah Gregory, Danielle Wilson, Covadonga M Díaz-Caneja, Lieuwe de Haan, Arjen Sutterland.

## References

- 1 Kahn RS, Fleischhacker WW, Boter H, Davidson M, Vergouwe Y, Keet IPM, et al. Effectiveness of antipsychotic drugs in first-episode schizophrenia and schizophreniform disorder: an open randomised clinical trial. *Lancet*. 2008;371(9618):1085-97.
- 2 Leucht S, Cipriani A, Spineli L, Mavridis D, Örey D, Richter F, et al. Comparative efficacy and tolerability of 15 antipsychotic drugs in schizophrenia: a multiple-treatments meta-analysis. *The Lancet*. 2013;382(9896):951-62.
- 3 Lieberman JA, Stroup TS, McEvoy JP, Swartz MS, Rosenheck RA, Perkins DO, et al. Effectiveness of antipsychotic drugs in patients with chronic schizophrenia. *N Engl J Med*. 2005;353(12):1209-23.
- 4 Case M, Stauffer VL, Ascher-Svanum H, Conley R, Kapur S, Kane JM, et al. The heterogeneity of antipsychotic response in the treatment of schizophrenia. *Psychol Med*. 2011;41(6):1291-300.
- 5 Howes OD, Vergunst F, Gee S, McGuire P, Kapur S, Taylor D. Adherence to treatment guidelines in clinical practice: study of antipsychotic treatment prior to clozapine initiation. *Br J Psychiatry*. 2012;201(6):481-5.
- 6 Arranz MJ, de Leon J. Pharmacogenetics and pharmacogenomics of schizophrenia: a review of last decade of research. *Molecular Psychiatry*. 2007;12(8):707-47.
- 7 Arranz M, Collier D, Sodhi M, Ball D, Roberts G, Price J, et al. Association between clozapine response and allelic variation in 5-HT<sub>2A</sub> receptor gene. *Lancet*. 1995;346(8970):281-82.
- 8 Brandl EJ, Kennedy JL, Müller DJ. Pharmacogenetics of antipsychotics. *Can J Psychiatry*. 2014;59(2):76-88.

- 9 Need AC, Keefe RSE, Ge D, Grossman I, Dickson S, McEvoy JP, et al. Pharmacogenetics of antipsychotic response in the CATIE trial: a candidate gene analysis. *Eur J Hum Genet.* 2009;17(7):946-57.
- 10 Schäfer M, Rujescu D, Giegling I, Guntermann A, Erfurth A, Bondy B, et al. Association of Short-Term Response to Haloperidol Treatment With a Polymorphism in the Dopamine D2 Receptor Gene. *AJP.* 2001;158(5):802-04.
- 11 Vehof J, Burger H, Wilffert B, Al Hadithy A, Alizadeh BZ, Snieder H, et al. Clinical response to antipsychotic drug treatment: association study of polymorphisms in six candidate genes. *Eur Neuropsychopharmacol.* 2012;22(9):625-31.
- 12 Zhang J-P, Lencz T, Malhotra AK. Dopamine D2 receptor genetic variation and clinical response to antipsychotic drug treatment: A meta-analysis. *Am J Psychiatry.* 2010;167(7):763-72.
- 13 Le Clerc S, Taing L, Fond G, Meary A, Llorca PM, Blanc O, et al. A double amino-acid change in the HLA-A peptide-binding groove is associated with response to psychotropic treatment in patients with schizophrenia. *Transl Psychiatry.* 2015;5:e608.
- 14 Clark SL, Souza RP, Adkins DE, Aberg K, Bukszár J, McClay JL, et al. Genome-wide association study of patient-rated and clinician-rated global impression of severity during antipsychotic treatment. *Pharmacogenet Genomics.* 2013;23(2):69-77.
- 15 Lavedan C, Licamele L, Volpi S, Hamilton J, Heaton C, Mack K, et al. Association of the NPAS3 gene and five other loci with response to the antipsychotic iloperidone identified in a whole genome association study. *Molecular Psychiatry.* 2008;14(8):804-19.

- 16 Li J, Yoshikawa A, Brennan MD, Ramsey TL, Meltzer HY. Genetic predictors of antipsychotic response to lurasidone identified in a genome wide association study and by schizophrenia risk genes. *Schizophrenia Research*. 2017.
- 17 Li Q, Wineinger NE, Fu D-J, Libiger O, Alphas L, Savitz A, et al. Genome-wide association study of paliperidone efficacy. *Pharmacogenet Genomics*. 2017;27(1):7-18.
- 18 McClay JL, Adkins DE, Aberg K, Bukszár J, Khachane AN, Keefe RSE, et al. Genome-wide pharmacogenomic study of neurocognition as an indicator of antipsychotic treatment response in schizophrenia. *Neuropsychopharmacology*. 2011;36(3):616-26.
- 19 McClay JL, Adkins DE, Aberg K, Stroup S, Perkins DO, Vladimirov VI, et al. Genome-wide pharmacogenomic analysis of response to treatment with antipsychotics. *Molecular Psychiatry*. 2011;16(1):76-85.
- 20 Sacchetti E, Magri C, Minelli A, Valsecchi P, Traversa M, Calza S, et al. The GRM7 gene, early response to risperidone, and schizophrenia: a genome-wide association study and a confirmatory pharmacogenetic analysis. *Pharmacogenomics J*. 2017;17(2):146-54.
- 21 Stevenson JM, Reilly JL, Harris MSH, Patel SR, Weiden PJ, Prasad KM, et al. Antipsychotic pharmacogenomics in first episode psychosis: a role for glutamate genes. *Translational Psychiatry*. 2016;6(2):e739.
- 22 Yu H, Yan H, Wang L, Li J, Tan L, Deng W, et al. Five novel loci associated with antipsychotic treatment response in patients with schizophrenia: a genome-wide association study. *Lancet Psychiatry*. 2018;5(4):327-38.

- 23 Crespo-Facorro B, Prieto C, Sainz J. Schizophrenia gene expression profile reverted to normal levels by antipsychotics. *Int J Neuropsychopharmacol.* 2014;18(4).
- 24 Kumarasinghe N, Beveridge NJ, Gardiner E, Scott RJ, Yasawardene S, Perera A, et al. Gene expression profiling in treatment-naive schizophrenia patients identifies abnormalities in biological pathways involving AKT1 that are corrected by antipsychotic medication. *Int J Neuropsychopharmacol.* 2013;16(7):1483-503.
- 25 Sainz J, Prieto C, Ruso-Julve F, Crespo-Facorro B. Blood Gene Expression Profile Predicts Response to Antipsychotics. *Front Mol Neurosci.* 2018;11.
- 26 Kahn RS, Winter van Rossum I, Leucht S, McGuire P, Lewis SW, Leboyer M, et al. Amisulpride and olanzapine followed by open-label treatment with clozapine in first-episode schizophrenia and schizophreniform disorder (OPTiMiSE): a three-phase switching study. *Lancet Psychiatry.* 2018.
- 27 Leucht S, Winter-van Rossum I, Heres S, Arango C, Fleischhacker WW, Glenthøj B, et al. The optimization of treatment and management of schizophrenia in Europe (OPTiMiSE) trial: rationale for its methodology and a review of the effectiveness of switching antipsychotics. *Schizophr Bull.* 2015;41(3):549-58.
- 28 Sheehan DV, Lecrubier Y, Sheehan KH, Amorim P, Janavs J, Weiller E, et al. The Mini-International Neuropsychiatric Interview (M.I.N.I.): the development and validation of a structured diagnostic psychiatric interview for DSM-IV and ICD-10. *J Clin Psychiatry.* 1998;59 Suppl 20:22-33;quiz 34-57.
- 29 Anderson CA, Pettersson FH, Clarke GM, Cardon LR, Morris AP, Zondervan KT. Data quality control in genetic case-control association studies. *Nat Protoc.* 2010;5(9):1564-73.



- 30 Wu H, Wang C, Wu Z. PROPER: comprehensive power evaluation for differential expression using RNA-seq. *Bioinformatics*. 2015;31(2):233-41.
- 31 Howes OD, McCutcheon R, Agid O, de Bartolomeis A, van Beveren NJ, Birnbaum ML, et al. Treatment-Resistant Schizophrenia: Treatment Response and Resistance in Psychosis (TRRIP) Working Group Consensus Guidelines on Diagnosis and Terminology. *Am J Psychiatry*. 2017;174(3):216-29.
- 32 Ascher-Svanum H, Nyhuis AW, Faries DE, Kinon BJ, Baker RW, Shekhar A. Clinical, functional, and economic ramifications of early nonresponse to antipsychotics in the naturalistic treatment of schizophrenia. *Schizophr Bull*. 2008;34(6):1163-71.
- 33 Emsley R, Rabinowitz J, Medori R. Time course for antipsychotic treatment response in first-episode schizophrenia. *Am J Psychiatry*. 2006;163(4):743-45.
- 34 Kinon BJ, Chen L, Ascher-Svanum H, Stauffer VL, Kollack-Walker S, Sniadecki JL, et al. Predicting response to atypical antipsychotics based on early response in the treatment of schizophrenia. *Schizophrenia Research*. 2008;102(1-3):230-40.
- 35 Lin CH, Lin HS, Lin SC, Kuo CC, Wang FC, Huang YH. Early improvement in PANSS-30, PANSS-8, and PANSS-6 scores predicts ultimate response and remission during acute treatment of schizophrenia. *Acta Psychiatr Scand*. 2018;137(2):98-108.
- 36 Harrison RNS, Murray RM, Lee SH, Paya Cano J, Dempster D, Curtis CJ, et al. Gene-expression analysis of clozapine treatment in whole blood of patients with psychosis. *Psychiatric Genetics*. 2016;26(5):211-17.
- 37 Ota VK, Noto C, Gadelha A, Santoro ML, Silva PN, Melaragno MI, et al. Neurotransmitter receptor and regulatory gene expression in peripheral blood of

- Brazilian drug-naïve first-episode psychosis patients before and after antipsychotic treatment. *Psychiatry Res.* 2013;210(3):1290-92.
- 38 Chang X, Liu Y, Hahn CG, Gur RE, Sleiman PMA, Hakonarson H. RNA-seq analysis of amygdala tissue reveals characteristic expression profiles in schizophrenia. *Translational Psychiatry.* 2017;7(8):e1203.
- 39 Chen C, Cheng L, Grennan K, Pibiri F, Zhang C, Badner JA, et al. Two gene co-expression modules differentiate psychotics and controls. *Molecular Psychiatry.* 2013;18(12):1308-14.
- 40 Fillman SG, Cloonan N, Catts VS, Miller LC, Wong J, McCrossin T, et al. Increased inflammatory markers identified in the dorsolateral prefrontal cortex of individuals with schizophrenia. *Molecular Psychiatry.* 2013;18(2):206-14.
- 41 Gandal MJ, Haney JR, Parikshak NN, Leppa V, Ramaswami G, Hartl C, et al. Shared molecular neuropathology across major psychiatric disorders parallels polygenic overlap. 2018:6.
- 42 Huang K-C, Yang K-C, Lin H, Tsao TT-H, Lee S-A. Transcriptome alterations of mitochondrial and coagulation function in schizophrenia by cortical sequencing analysis. *BMC Genomics.* 2014;15(Suppl 9):S6.
- 43 Maycox PR, Kelly F, Taylor A, Bates S, Reid J, Logendra R, et al. Analysis of gene expression in two large schizophrenia cohorts identifies multiple changes associated with nerve terminal function. *Molecular Psychiatry.* 2009;14(12):1083.
- 44 Pérez-Santiago J, Diez-Alarcia R, Callado LF, Zhang JX, Chana G, White CH, et al. A combined analysis of microarray gene expression studies of the human prefrontal cortex identifies genes implicated in schizophrenia. *J Psychiatr Res.* 2012;46(11):1464-74.

- 45 Zhao Z, Xu J, Chen J, Kim S, Reimers M, Bacanu S-A, et al. Transcriptome sequencing and genome-wide association analyses reveal lysosomal function and actin cytoskeleton remodeling in schizophrenia and bipolar disorder. *Molecular Psychiatry*. 2015;20(5):563-72.
- 46 Sainz J, Mata I, Barrera J, Perez-Iglesias R, Varela I, Arranz MJ, et al. Inflammatory and immune response genes have significantly altered expression in schizophrenia. *Molecular Psychiatry*. 2013;18(10):1056-57.
- 47 Persson B, Kallberg Y, Bray JE, Bruford E, Dellaporta SL, Favia AD, et al. The SDR (short-chain dehydrogenase/reductase and related enzymes) nomenclature initiative. *Chem Biol Interact*. 2009;178(1-3):94-8.
- 48 Ghandour MS, Langley OK, Zhu XL, Waheed A, Sly WS. Carbonic anhydrase IV on brain capillary endothelial cells: a marker associated with the blood-brain barrier. *Proc Natl Acad Sci U S A*. 1992;89(15):6823-7.
- 49 Shah GN, Ulmasov B, Waheed A, Becker T, Makani S, Svichar N, et al. Carbonic anhydrase IV and XIV knockout mice: roles of the respective carbonic anhydrases in buffering the extracellular space in brain. *Proc Natl Acad Sci U S A*. 2005;102(46):16771-6.
- 50 Cases S, Stone SJ, Zhou P, Yen E, Tow B, Lardizabal KD, et al. Cloning of DGAT2, a second mammalian diacylglycerol acyltransferase, and related family members. *J Biol Chem*. 2001;276(42):38870-6.
- 51 Godin O, Leboyer M, Gaman A, Aouizerate B, Berna F, Brunel L, et al. Metabolic syndrome, abdominal obesity and hyperuricemia in schizophrenia: Results from the FACE-SZ cohort. *Schizophr Res*. 2015;168(1-2):388-94.
- 52 Thakore JH. Metabolic disturbance in first-episode schizophrenia. *Br J Psychiatry Suppl*. 2004;47:S76-9.

- 53 Stansley BJ, Conn PJ. The therapeutic potential of metabotropic glutamate receptor modulation for schizophrenia. *Curr Opin Pharmacol*. 2018;38:31-36.
- 54 Hayashi MK, Tang C, Verpelli C, Narayanan R, Stearns MH, Xu RM, et al. The postsynaptic density proteins Homer and Shank form a polymeric network structure. *Cell*. 2009;137(1):159-71.
- 55 Banerjee A, Luong JA, Ho A, Saib AO, Ploski JE. Overexpression of Homer1a in the basal and lateral amygdala impairs fear conditioning and induces an autism-like social impairment. *Mol Autism*. 2016;7:16.
- 56 Negyessy L, Xiao J, Kantor O, Kovacs GG, Palkovits M, Doczi TP, et al. Layer-specific activity of tissue non-specific alkaline phosphatase in the human neocortex. *Neuroscience*. 2011;172:406-18.
- 57 Sebastián-Serrano Á, Engel T, Diego-García Ld, Olivos-Oré LA, Arribas-Blázquez M, Martínez-Frailes C, et al. Neurodevelopmental alterations and seizures developed by mouse model of infantile hypophosphatasia are associated with purinergic signalling deregulation. *Human Molecular Genetics*. 2016;25(19):4143.
- 58 Cheffer A, Castillo ARG, Corrêa-Velloso J, Gonçalves MCB, Naaldijk Y, Nascimento IC, et al. Purinergic system in psychiatric diseases. *Molecular Psychiatry*. 2018;23(1):94-106.
- 59 Glatt SJ, Everall IP, Kremen WS, Corbeil J, Sásik R, Khanlou N, et al. Comparative gene expression analysis of blood and brain provides concurrent validation of SELENBP1 up-regulation in schizophrenia. *Proc Natl Acad Sci USA*. 2005;102(43):15533-38.
- 60 Sullivan PF, Fan C, Perou CM. Evaluating the comparability of gene expression in blood and brain. *Am J Med Genet B Neuropsychiatr Genet*. 2006;141B(3):261-68.

61 Tylee DS, Kawaguchi DM, Glatt SJ. On the outside, looking in: a review and evaluation of the comparability of blood and brain "-omes". *Am J Med Genet B Neuropsychiatr Genet.* 2013;162B(7):595-603.

## Figure legends

**Figure 1. Differentially expressed genes (DEGs) in patients with first episode psychosis after 4-week treatment with amisulpride. a)** Bimodal distribution of total PANSS changes after 4-week amisulpride treatment in first episode psychosis patients (n=188). Theoretical distribution for the whole sample is represented in black. Gaussian probability density functions were obtained by the estimated PANSS changes mixture function and showed two subgroups with poor (red) and good (blue) symptoms improvement. **b)** Volcano plots of DEGs in good (n=113) and poor (n=75) responders before and after 4-week amisulpride treatment. Genes over- and under-expressed after Benjamini-Hochberg correction (FDR<0.1) are shown in red and green, respectively. **c)** Venn diagram representing the overlap between the 32 DEGs identified in good responders of the current study and genes that have been previously reported to be differentially expressed in brain or blood from patients with schizophrenia (SZ) when compared with controls, or after antipsychotic (AP) medication. Either the number of genes or their name is reported in each part of the diagram. Genes for which differential expression has been validated in our replication cohort are shown in bold. \*indicates genes that were differentially expressed between good and poor responders before amisulpride treatment. FC, Fold change.

**Figure 2. Receiver operator characteristic curves from logistic regression models predicting good or poor response to amisulpride treatment.** The red curve represents the model combining the gene expression level of *ALPL*, *CA4*, *DGAT2*, *DHRS13*, *HOMER3* and *WLS*. The green curve represents the model combining the age, the sex, the positive PANSS score (PPANSS) and the duration of untreated psychosis (DUP). The blue curve represents the model combining the *ALPL*, *CA4*, *DGAT2*, *DHRS13*, *HOMER3* and *WLS* gene expression level as well as the age, the sex, the PPANSS and the DUP at inclusion. Area under the curve (AUC) are indicated for each model.

**Table 1: Genes differentially expressed after 4-week treatment with amisulpride.**

	Gene name	Good responders (n=113)			Poor responders (n=75)			Spearman correlation between gene expression changes and symptom changes			Protein coding genes	Brain expression <sup>a</sup>	Replication sample (n=24)		
		FC	p	FDR	FC	p	FDR	rho	p	FDR			FC	p	FDR
Down-regulated genes	<b>CA4</b>	0.76	5.67E-09	<b>0.0001</b>	1.07	0.23	0.72	-0.28	0.0001	<b>0.0008</b>	yes	yes	0.71	0.01	<b>0.06</b>
	<i>AC073172.1</i>	0.72	6.58E-07	<b>0.005</b>	0.97	0.68	0.92	-0.18	0.01	<b>0.03</b>	no	-	-	-	-
	<i>NFE4</i>	0.83	1.94E-06	<b>0.01</b>	0.95	0.25	0.73	-0.21	0.005	<b>0.02</b>	yes	no	-	-	-
	<b>GALNT14</b>	0.78	1.28E-05	<b>0.05</b>	1.04	0.48	0.85	-0.22	0.002	<b>0.01</b>	yes	yes	0.76	0.02	<b>0.05</b>
	<i>AP000640.1</i>	0.84	1.53E-05	<b>0.05</b>	1.00	0.96	0.99	-0.19	0.008	<b>0.02</b>	no	yes	-	-	-
	<b>KAZN</b>	0.83	2.39E-05	<b>0.05</b>	0.94	0.22	0.71	-0.15	0.05	<b>0.06</b>	yes	yes	0.67	0.01	<b>0.05</b>
	<i>KIAA0319</i>	0.83	2.81E-05	<b>0.05</b>	0.94	0.17	0.67	-0.17	0.02	<b>0.03</b>	yes	yes	0.77	0.08	0.12
	<i>NLRP12</i>	0.87	5.46E-05	<b>0.07</b>	1.08	0.06	0.55	-0.24	0.001	<b>0.008</b>	yes	no	-	-	-
	<i>FBXL13</i>	0.85	5.93E-05	<b>0.07</b>	0.92	0.05	0.52	-0.14	0.06	<b>0.08</b>	yes	no	-	-	-
	<b>ALPL</b>	0.79	7.52E-05	<b>0.07</b>	1.09	0.22	0.71	-0.23	0.002	<b>0.01</b>	yes	yes	0.77	0.009	<b>0.09</b>
	<i>AL391832.3</i>	0.88	8.76E-05	<b>0.07</b>	1.00	0.96	0.99	-0.21	0.004	<b>0.02</b>	no	-	-	-	-
	<i>P4HA2</i>	0.89	9.46E-05	<b>0.07</b>	1.04	0.38	0.80	-0.20	0.007	<b>0.02</b>	yes	yes	-	-	-
	<i>DGAT2</i>	0.87	9.65E-05	<b>0.07</b>	1.08	0.07	0.56	-0.28	0.0001	<b>0.002</b>	yes	yes	0.73	0.08	0.11
	<i>AC092171.4</i>	0.85	1.01E-04	<b>0.07</b>	1.06	0.31	0.77	-0.20	0.007	<b>0.02</b>	no	yes	-	-	-
	<i>AC132872.1</i>	0.81	1.01E-04	<b>0.07</b>	1.05	0.48	0.85	-0.22	0.003	<b>0.01</b>	no	yes	-	-	-
	<i>LINC00963</i>	0.91	1.04E-04	<b>0.07</b>	1.08	0.01	0.51	-0.28	0.0001	<b>0.001</b>	no	yes	-	-	-
	<i>WLS</i>	0.87	1.10E-04	<b>0.07</b>	0.98	0.58	0.89	-0.17	0.02	<b>0.03</b>	yes	yes	0.85	0.15	0.19
	<i>AL133351.4</i>	0.88	1.12E-04	<b>0.07</b>	1.04	0.28	0.75	-0.17	0.02	<b>0.03</b>	no	-	-	-	-
	<i>NLRP6</i>	0.81	1.12E-04	<b>0.07</b>	1.09	0.19	0.68	-0.14	0.05	<b>0.07</b>	yes	no	-	-	-
	<i>PLB1</i>	0.85	1.12E-04	<b>0.07</b>	0.99	0.73	0.93	-0.11	0.14	0.14	yes	yes	-	-	-
<i>ALG1L13P</i>	0.89	1.33E-04	<b>0.07</b>	1.02	0.74	0.94	-0.17	0.02	<b>0.03</b>	no	yes	-	-	-	
<b>HOMER3</b>	0.84	1.48E-04	<b>0.08</b>	1.09	0.16	0.65	-0.14	0.06	<b>0.07</b>	yes	yes	0.84	0.04	<b>0.07</b>	
<b>DHRS13</b>	0.87	1.75E-04	<b>0.09</b>	1.04	0.30	0.76	-0.18	0.01	<b>0.03</b>	yes	yes	0.82	0.02	<b>0.04</b>	
Up-regulated genes	<i>C15orf54</i>	1.18	1.68E-05	<b>0.05</b>	1.07	0.15	0.64	0.10	0.19	0.21	no	no	-	-	-
	<i>TRPC6</i>	1.26	3.00E-05	<b>0.05</b>	0.97	0.63	0.91	0.18	0.01	<b>0.03</b>	yes	yes	-	-	-
	<b>SLC4A4</b>	1.15	4.85E-05	<b>0.07</b>	0.93	0.13	0.62	0.18	0.02	<b>0.03</b>	yes	yes	0.84	0.31	0.34
	<i>P2RY12</i>	1.14	5.79E-05	<b>0.07</b>	1.10	0.03	0.51	0.04	0.62	0.64	yes	yes	-	-	-
	<i>CYSLTR2</i>	1.13	1.07E-04	<b>0.07</b>	1.01	0.88	0.98	0.11	0.13	0.14	yes	yes	-	-	-
	<i>CXCR6</i>	1.14	1.08E-04	<b>0.07</b>	1.03	0.46	0.84	0.11	0.12	<b>0.15</b>	yes	no	-	-	-
	<i>FAT1</i>	1.27	1.19E-04	<b>0.07</b>	1.20	0.01	0.51	0.06	0.38	0.41	yes	yes	-	-	-
	<i>ACSL5</i>	1.06	1.33E-04	<b>0.08</b>	0.99	0.52	0.86	0.18	0.01	<b>0.03</b>	yes	yes	1.06	0.67	0.67
	<i>GUCY1B3</i>	1.14	1.44E-04	<b>0.08</b>	1.05	0.25	0.73	0.12	0.09	0.10	yes	yes	-	-	-

<sup>a</sup>Brain expression was defined when more than 1 transcript per million was found in brain tissues of GTEx portal (<https://www.gtexportal.org/>).

Significant p-values resisting to a Benjamini-Hochberg false discovery rate (FDR) of 0.1 are shown in bold. FC, fold-change at week 4 relative to the expression level at inclusion.



**Table 2. Gene differential expression at inclusion between future good and poor responders to amisulpride treatment.**

Gene name	Difference between future good and poor responders at inclusion		
	FC	p-value	FDR
<i><b>ALPL</b></i>	1.32	0.003	<b>0.02</b>
<i><b>DHRS13</b></i>	1.18	0.003	<b>0.02</b>
<i><b>HOMER3</b></i>	1.18	0.01	<b>0.04</b>
<i><b>DGAT2</b></i>	1.15	0.02	<b>0.04</b>
<i><b>WLS</b></i>	1.16	0.05	<b>0.08</b>
<i><b>CA4</b></i>	1.16	0.05	<b>0.08</b>
<i>GALNT14</i>	1.16	0.13	0.19
<i>ACSL5</i>	0.99	0.62	0.78
<i>KIAA0319</i>	1.02	0.75	0.84
<i>KAZN</i>	1.00	0.97	0.97

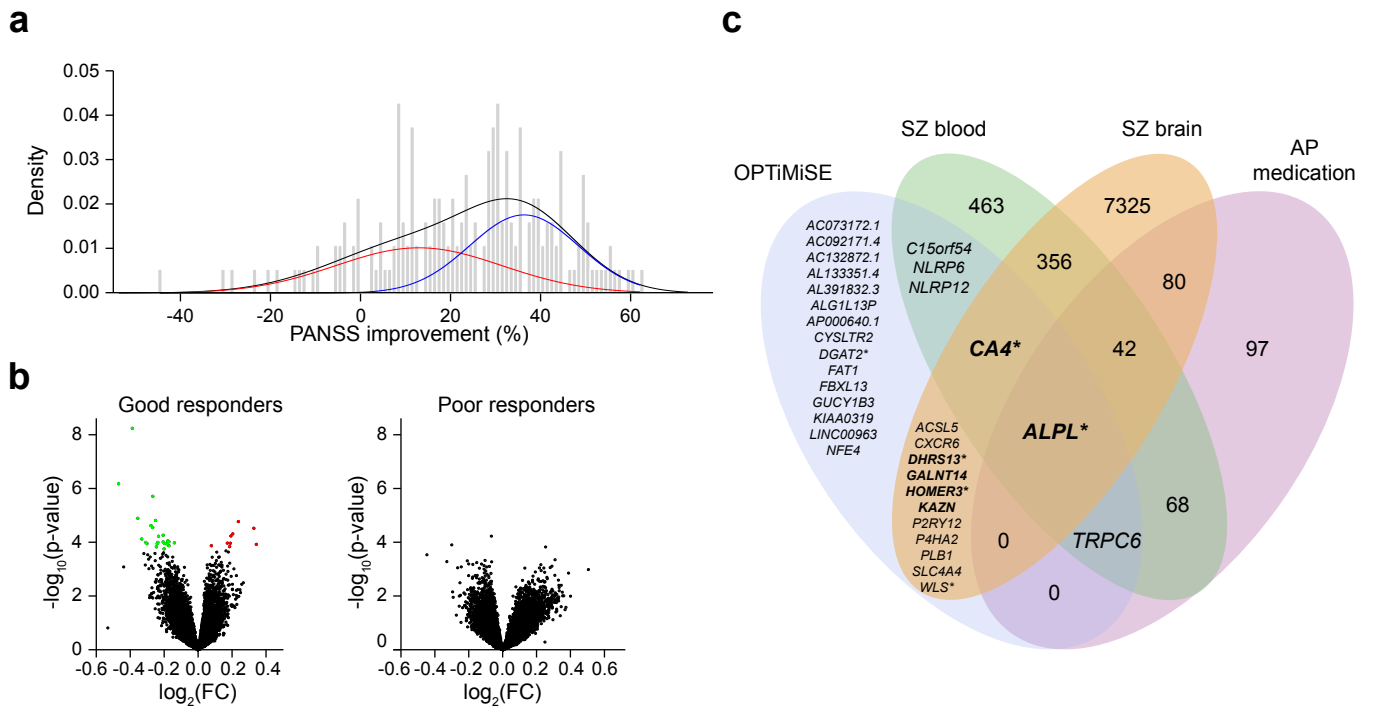
Significant p-values resisting to a Benjamini-Hochberg false discovery rate (FDR) of 0.1 are shown in bold. FC, expression fold-change.

**Table 3. Predictive value of models based on gene expression and clinical data at inclusion.**

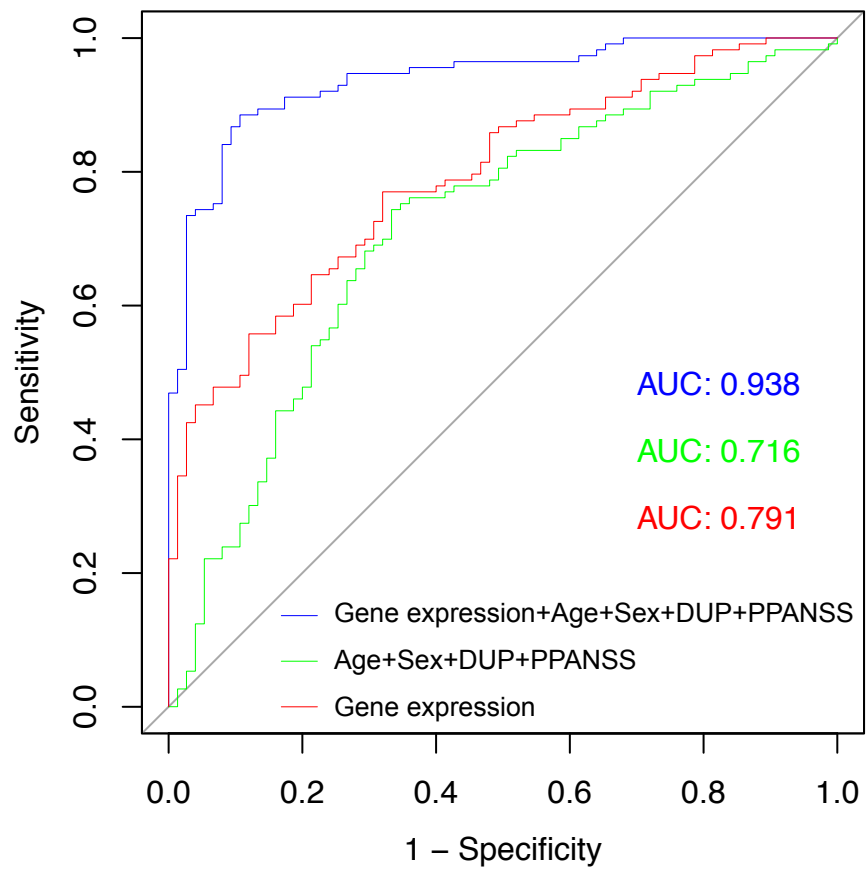
response~	AUC [95%CI]	p <sup>a</sup>	Sensitivity	Specificity	PPV	NPV	Accuracy
<i>ALPL</i>	0.589 [0.505;0.673]	0.04	0.68	0.56	0.70	0.54	0.63
<i>DHRS13</i>	0.613 [0.533;0.693]	0.008	0.46	0.75	0.73	0.48	0.57
<i>HOMER3</i>	0.604 [0.524;0.685]	0.01	0.65	0.56	0.69	0.51	0.61
<i>DGAT2</i>	0.634 [0.555;0.713]	0.002	0.37	0.85	0.79	0.47	0.56
<i>WLS</i>	0.608 [0.527;0.688]	0.01	0.56	0.67	0.72	0.50	0.60
<i>CA4</i>	0.622 [0.543;0.702]	0.005	0.50	0.72	0.73	0.49	0.59
<i>ALPL*DHRS13*HOMER3</i> <i>*DGAT2*WLS*CA4</i>	0.791 [0.728;0.853]	0.77	0.77	0.68	0.78	0.66	0.73
Age+Sex+DUP+PPANSS	0.716 [0.640;0.791]	0.0001	0.74	0.67	0.77	0.63	0.71
<i>ALPL</i> +Age+Sex+DUP+PPANSS	0.751 [0.678;0.824]	<10 <sup>-4</sup>	0.73	0.73	0.80	0.64	0.73
<i>DHRS13</i> +Age+Sex+DUP+PPANSS	0.740 [0.666;0.813]	<10 <sup>-4</sup>	0.88	0.51	0.73	0.75	0.73
<i>HOMER3</i> +Age+Sex+DUP+PPANSS	0.722 [0.647;0.797]	<10 <sup>-4</sup>	0.71	0.73	0.80	0.62	0.72
<i>DGAT2</i> +Age+Sex+DUP+PPANSS	0.743 [0.670;0.816]	<10 <sup>-4</sup>	0.65	0.77	0.81	0.60	0.70
<i>WLS</i> +Age+Sex+DUP+PPANSS	0.738 [0.664;0.812]	<10 <sup>-4</sup>	0.82	0.63	0.77	0.70	0.74
<i>CA4</i> +Age+Sex+DUP+PPANSS	0.741 [0.669;0.812]	<10 <sup>-4</sup>	0.59	0.81	0.83	0.57	0.68
<i>ALPL*DHRS13*HOMER3</i> <i>*DGAT2*WLS*CA4</i> +Age+Sex+DUP+PPANSS	0.938 [0.905;0.971]	0.02	0.88	0.89	0.92	0.84	0.89

<sup>a</sup>p-values have been estimated after 10,000 permutations of the response status in 188 individuals.

AUC, area under the curve; CI, confidence interval; DUP, duration of untreated psychosis; NPV, negative predictive value; PPANSS, positive PANSS score; PPV, positive predictive value.

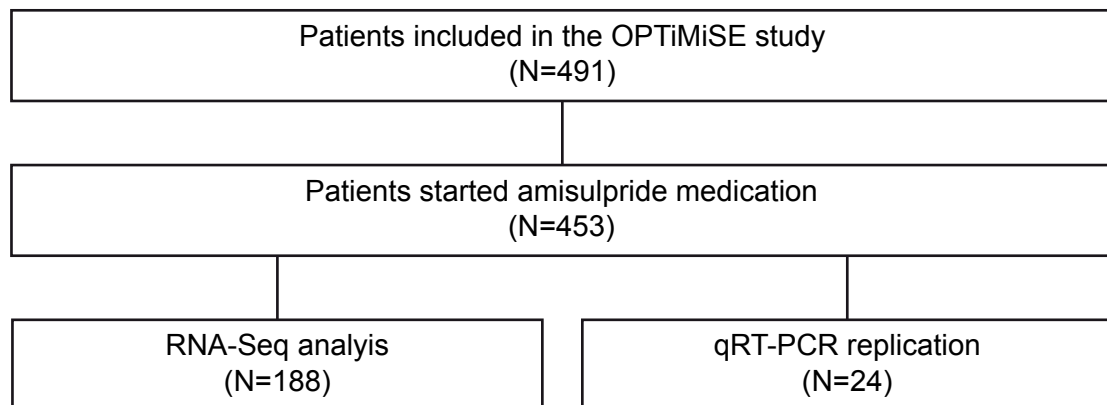


**Fig. 1.**

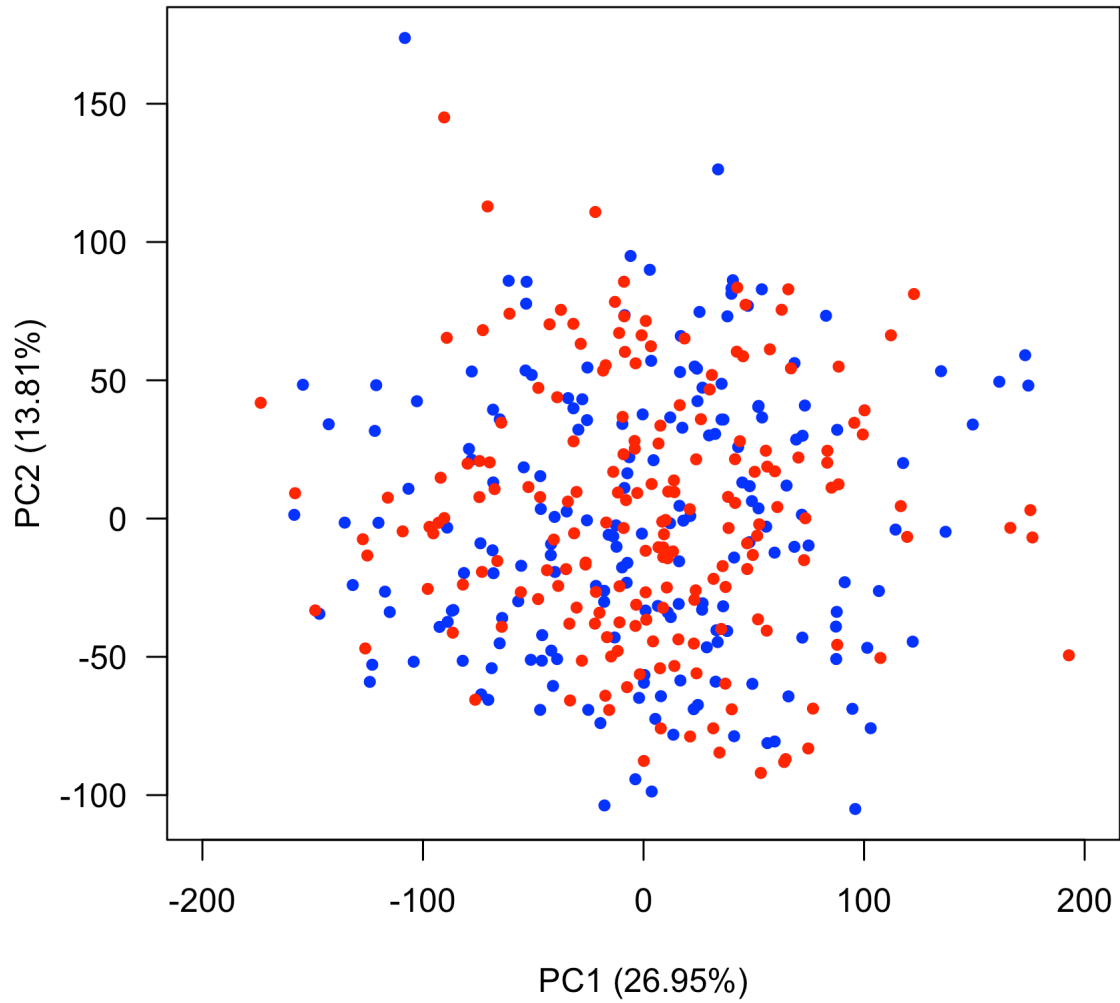


**Fig. 2.**

## Supplementary information



**Supplementary Figure S1. Flow chart of the study.** Through the OPTiMiSE study, 491 patients were included with a first episode of psychosis and 453 started amisulpride medication. The RNA-Seq analysis has been conducted on a subsample of 188 subjects. An independent sample of 24 subjects from the OPTiMiSE cohort has been used for the replication study. N, number of subjects; qRT-PCR, quantitative reverse transcription polymerase chain reaction.



**Supplementary Figure S2. Principal component analysis (PCA) of the whole set of genes in the 376 samples.** The plot shows the centered and scaled data projected on the first two principal components of the PCA with the proportion of variance explained. Samples before and after treatment are represented by blue and red dots, respectively.

### Supplementary Table 1. Characteristics of patients

At inclusion	Good responders (n=113)	Poor responders (n=75)	Statistics	p-value
Age (years)	<b>25.2 (9.7)</b>	<b>23.1 (7.4)</b>	<b>U=5134.5</b>	<b>0.01</b>
Female (%)	36.3	28	$\chi^2=1.40$ , df=1	0.24
Current smokers (%)	48.7	42.7	$\chi^2=0.65$ , df=1	0.42
Recreational drugs (%)	45.1	45.3	$\chi^2=0.00$ , df=1	0.98
Diagnosis: SZ/SD/SA (%)	42.5/50.4/7.1	58.7/34.7/6.7	$\chi^2=4.97$ , df=2	0.08
DUP (months)	<b>3 (4)</b>	<b>6 (10)</b>	<b>U=3132.5</b>	<b>0.03</b>
PANSS-Total	80.7 (17.9)	75.7 (20)	t=1.75, df=186	0.07
PANSS-Positive	<b>21.1 (5.4)</b>	<b>18.6 (5.9)</b>	<b>t=3.00, df=186</b>	<b>0.003</b>
PANSS-Negative	19.8 (6.4)	19.9 (7.6)	t=-0.07, df=186	0.95
PANSS-General	39.8 (9.1)	37.2 (9.8)	t=1.83, df=186	0.07

Quantitative variables are expressed either with mean (standard deviation) or with median (inter quartile range). SZ, schizophrenia; SD, schizophreniform disorder; SA, schizoaffective disorder; DUP, duration of untreated psychosis

### Supplementary Table 2. Taqman® Probes for genes tested on replication sample

Gene	Probe
<i>18S</i>	Hs99999901_s1
<i>ACSL5</i>	Hs01061748_m1
<i>ALPL</i>	Hs01029140_g1
<i>CA4</i>	Hs00426343_m1
<i>DGAT2</i>	Hs01045909_g1
<i>DHRS13</i>	Hs00376268_m1
<i>GALNT14</i>	Hs00226180_m1
<i>GUSB</i>	Hs99999908_m1
<i>HOMER3</i>	Hs00925062_g1
<i>KAZN</i>	Hs00323754_m1
<i>KIAA0319</i>	Hs00993373_m1
<i>P4HA2</i>	Hs00989998_m1
<i>SLC4A4</i>	Hs001098484_m1
<i>TRPC6</i>	Hs00988479_m1
<i>WLS</i>	Hs01553066_m1

### **Composition of the OPTiMiSE study group:**

René S Kahn\*, Iris E Sommer, Inge Winter-van Rossum\*, Metten Somers, Paula C Ywema, Shitisj Kapur, Philip McGuire\*, Marion Leboyer\*, Andreas Meyer-Lindenberg, Shon W Lewis, Stefan Leucht, Celso Arango, Wolfgang W Fleischhacker, Anne Lotte Meijering, Jocelyn Petter, Resy Van de Brug, Joost Schotsman, Jildou Zwerver, Jos Peuskens, Marc De Hert, Erik Thys, Lucho G Hranov, Valentin Hranov, Jan Libiger, Richard Köhler, Pavel Mohr, Birte Glenthøj, Brian Broberg, Signe Düring, Lone Baandrup, Stéphane Jamain\*, Stephan Heres, Dan Rujescu\*, Ina Giegling, Mark Weiser, Mor Bar Heim, Michael Davidson, Silvana Galderisi, Paola Bucci, Armida Mucci, Janusz Rybakowski, Agnieszka Remlinger-Molenda, Ilan Gonen, Paull Radu, Marina Díaz-Marsá, Alberto Rodriguez, Tomas Palomo, Roberto Rodriguez-Jimenez, Paz García-Portilla, Miquel Bernardo, Julio Bobes, Christina Vilares Oliveira, Gregor Berger, Claudia Wildt, Paola Dazzan, Roccio Perez-Iglesias, Richard Drake, Sarah Gregory, Danielle Wilson, Covadonga M Díaz-Caneja, Lieuwe de Haan, Arjen Sutterland.

\*Inge Winter van Rossum, Ph.D.5, Dan Rujescu, M.D., Ph.D.7 , Philip McGuire, M.D., Ph.D.8, René S Kahn, M.D., Ph.D.5,9, Marion Leboyer, M.D., Ph.D.1,2,3,10, and Stéphane Jamain, Ph.D.1,2,3

<sup>1</sup>Inserm U955, Psychiatrie Translationnelle, Créteil, France;

<sup>2</sup>Université Paris Est, Faculté de Médecine, Créteil, France;

<sup>3</sup>Fondation FondaMental, Créteil, France;

<sup>4</sup>Centre National de Recherche en Génomique Humaine (CNRGH), Institut de Biologie François Jacob, CEA, Université Paris-Saclay, Evry, France;

<sup>5</sup>Department of Psychiatry, Brain Center Rudolf Magnus, Utrecht, Netherlands;



<sup>6</sup>AP-HP, Hôpital H. Mondor – A. Chenevier, Plateforme de Ressources Biologiques, Créteil, France;

<sup>7</sup>Department of Psychiatry, University Hospital Halle, Halle, Germany;

<sup>8</sup>Department of Psychosis Studies, Institute of Psychiatry, Psychology and Neuroscience, King's College London, London, UK;

<sup>9</sup>Department of Psychiatry, Icahn School of Medicine at Mount Sinai, New York, NY, USA;

<sup>10</sup>AP-HP, DHU Pe-PSY, Pôle de psychiatrie et d'addictologie des Hôpitaux Universitaires Henri Mondor, Créteil, France.