



HAL
open science

Interleukin-15 and cancer: some solved and many unsolved questions

Piera Filomena Fiore, Sabina Di Matteo, Nicola Tumino, Francesca Romana Mariotti, Gabriella Pietra, Selene Ottonello, Simone Negrini, Barbara Bottazzi, Lorenzo Moretta, Erwan Mortier, et al.

► To cite this version:

Piera Filomena Fiore, Sabina Di Matteo, Nicola Tumino, Francesca Romana Mariotti, Gabriella Pietra, et al. Interleukin-15 and cancer: some solved and many unsolved questions. *Journal for Immunotherapy of Cancer*, 2020. inserm-03013809

HAL Id: inserm-03013809


<https://inserm.hal.science/inserm-03013809>

Submitted on 19 Nov 2020

HAL is a multi-disciplinary open access archive for the deposit and dissemination of scientific research documents, whether they are published or not. The documents may come from teaching and research institutions in France or abroad, or from public or private research centers.

L'archive ouverte pluridisciplinaire **HAL**, est destinée au dépôt et à la diffusion de documents scientifiques de niveau recherche, publiés ou non, émanant des établissements d'enseignement et de recherche français ou étrangers, des laboratoires publics ou privés.

Interleukin-15 and cancer: some solved and many unsolved questions

Piera Filomena Fiore,¹ Sabina Di Matteo ,¹ Nicola Tumino,¹ Francesca Romana Mariotti,¹ Gabriella Pietra,^{2,3} Selene Ottonello,^{3,4} Simone Negrini,⁵ Barbara Bottazzi,⁶ Lorenzo Moretta,¹ Erwan Mortier,^{7,8} Bruno Azzarone ¹

To cite: Fiore PF, Di Matteo S, Tumino N, *et al.* Interleukin-15 and cancer: some solved and many unsolved questions. *Journal for ImmunoTherapy of Cancer* 2020;**8**:e001428. doi:10.1136/jitc-2020-001428

► Additional material is published online only. To view, please visit the journal online (<http://dx.doi.org/10.1136/jitc-2020-001428>).

PFF and SDM are joint first authors.

Accepted 22 October 2020



© Author(s) (or their employer(s)) 2020. Re-use permitted under CC BY-NC. No commercial re-use. See rights and permissions. Published by BMJ.

For numbered affiliations see end of article.

Correspondence to

Professor Bruno Azzarone; bgiuseppe.azzarone@opbg.net

Dr Erwan Mortier; erwan.mortier@univ-nantes.fr

ABSTRACT

Soluble interleukin (IL)-15 exists under two forms: as monomer (sIL-15) or as heterodimeric complex in association with sIL-15R α (sIL-15/IL-15R α). Both forms have been successfully tested in experimental tumor murine models and are currently undergoing investigation in phase I/II clinical trials. Despite more than 20 years research on IL-15, some controversial issues remain to be addressed. A first point concerns the detection of the sIL-15/IL-15R α in plasma of healthy donors or patients with cancer and its biological significance. The second and third unsolved question regards the protumorigenic role of the IL-15/IL-15R α complex in human cancer and the detrimental immunological consequences associated to prolonged exposure of natural killer (NK) cells to both forms of soluble IL-15, respectively. Data suggest that in vivo prolonged or repeated exposure to monomeric sIL-15 or the soluble complex may lead to NK hypo-responsiveness through the expansion of the CD8⁺/CD44⁺ T cell subset that would suppress NK cell functions. In vitro experiments indicate that soluble complex and monomeric IL-15 may cause NK hypo-responsiveness through a direct effect caused by their prolonged stimulation, suggesting that this mechanism could also be effective in vivo. Therefore, a better knowledge of IL-15 and a more appropriate use of both its soluble forms, in terms of concentrations and time of exposure, are essential in order to improve their therapeutic use. In cancer, the overproduction of sIL-15/IL-15R α could represent a novel mechanism of immune escape. The soluble complex may act as a decoy cytokine unable to efficiently foster NK cells, or could induce NK hypo-responsiveness through an excessive and prolonged stimulation depending on the type of IL-15R α isoforms associated. All these unsolved questions are not merely limited to the knowledge of IL-15 pathophysiology, but are crucial also for the therapeutic use of this cytokine. Therefore, in this review, we will discuss key unanswered issues on the heterogeneity and biological significance of IL-15 isoforms, analyzing both their cancer-related biological functions and their therapeutic implications.

INTRODUCTION

Soluble monomeric Interleukin-15 (sIL-15) and its super agonist isoform sIL-15/IL-15R α ,

owing to their target cell specificity, seem much more suitable than other cytokines to enhance antitumor and antiviral activity of effector cells and are currently under investigation in phase I/II clinical trials. Nevertheless, in our opinion, some question marks still have to be debated and deserve an accurate analysis in order to reach a safe and efficient therapeutic use.

In this review, we will analyze: (1) the complex biological properties of the IL-15/IL-15R α system, (2) the type of circulating IL-15 detected in healthy donors (HD) and patients with cancer and its biological significance, (3) the detection in leukemic and solid tumor patients of IL-15 and IL-15R α and their impact in cancer progression, (4) the employment of IL-15 or sIL-15/IL-15R α soluble complex as cancer treatment both in pre-clinical and clinical trials, (5) the impact of the prolonged stimulation with IL-15 and the sIL-15/IL-15R α on NK cells and the possible emergence of a novel immune escape mechanism by cancer cells.

The IL-15/IL-15 receptor system

Interleukin-15 (IL-15) is a pleiotropic cytokine, initially characterized as a T-cell growth factor^{1,2} that links in vivo innate and adaptive immune responses.³ IL-15 belongs to the four α -helix bundle cytokine family and is produced constitutively by different cell types such as monocytes, macrophages, dendritic cells, stromal cells, epithelial cells (for review see ref. 4 and muscle cells).⁵ Rather complex biological features characterize IL-15. Regarding IL-15, it exists under several functional forms: (1) a soluble monomeric form (sIL-15), (2) the soluble complex sIL-15/IL-15R α , (3) the transpresented form (tp-IL-15) and (4) the transmembrane form (tm-IL-15) (figure 1A).

IL-15 functions on binding to the IL-2R β / γ _c heterodimer, shared with IL-2, formed by IL-2R β and γ _c chains. IL-2R β /

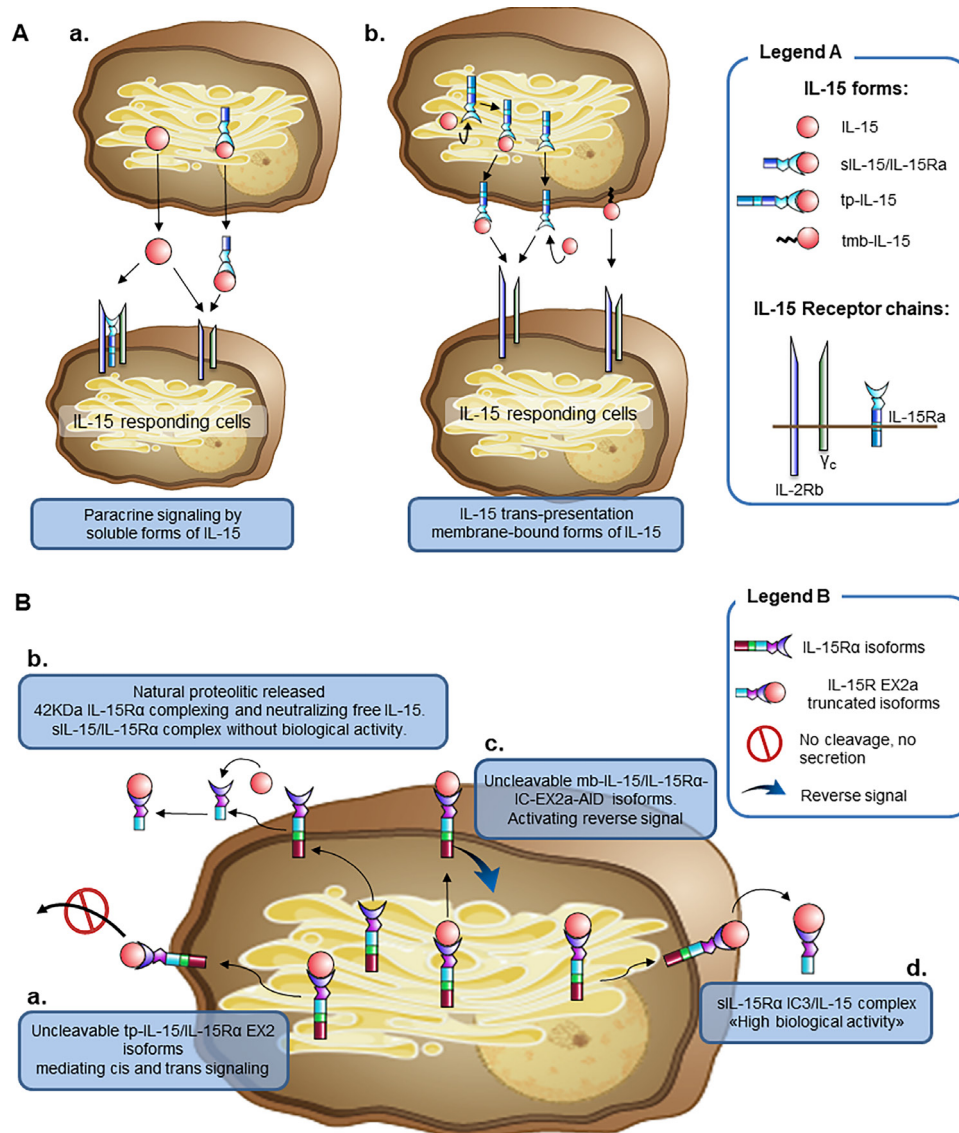


Figure 1 Different membrane-bound IL-15 and sIL-15/IL-15R α complexes defined by the IL-15R α isoform present in the complex. (A) IL-15 exists under several functional forms: a soluble monomeric form (sIL-15), the soluble complex sIL-15/IL-15R α (a), the tp-IL-15 and the tmb-IL-15 (b). sIL-15 binds either the intermediate affinity dimeric IL-2R β / γ_c receptor or the high affinity trimeric IL-15R α /IL-2R β / γ_c receptor, whereas the sIL-15/IL-15R α complex binds only the IL-2R β / γ_c receptor (a). The tp-IL-15 is bound to membrane IL-15R α chains and the tmb-IL-15, is anchored to the cell membrane via an IL-15R α -independent mechanism: both signals in *trans* to surrounding cells expressing the dimeric IL-2R β / γ_c receptor (transpresentation). tp-IL-15 is either assembled within the cells before emerging to the cell surface, or sIL-15 may bind cytokine-free membrane-bound IL-15R α to promote consequently IL-15 trans-presentation to IL-2R β / γ_c receptor expressing cells (b). (B) Uncleavable tp-IL-15/IL-15R α complex bearing the IL-15R α EX2 isoforms, competent for signaling in *cis* and *trans* (a). sIL-15/IL-15R α complex bearing the NPR-IL-15R α without biological activity (b). Uncleavable IL-15/IL-15R α complex bearing IL-15R α -IC-EX2a-AID isoforms, competent for reverse signaling (c). sIL-15/IL-15R α complex bearing the IL-15R α -IC3 isoform provided of high biological activity (d). IL-15, interleukin-15; NPR, natural proteolytic release.

γ_c dimeric receptor binds IL-15 with an intermediate affinity ($K_d=0.27$ to 2.5 nM)⁶ and transduce the signal within the cells by activating the Jak/Stat pathway (Jak 1 and 3, Stat3 and 5). The IL-15R α chain confers specificity to IL-15 and binds the cytokine with a high affinity ($K_d=10$ – 80 pM). IL-15R α forms a high affinity trimeric receptor with IL-2R β and γ_c chains, allowing the cells to respond to low concentrations of IL-15. IL-15R α is also competent for signal transduction by itself^{7,8} (figure 1A).

The IL-15 modes of action

Soluble free IL-15, secreted at very low concentrations, is capable of activating cells expressing the high affinity IL-15R α /IL-2R β / γ_c receptor.⁹ In this respect, some cell types present in the peripheral blood (PB) could act in vivo as ‘cellular sinks’ thus rendering free sIL-15 almost undetectable.^{10–13} The soluble complex sIL-15/IL-15R α , first described by our laboratories,^{14,15} displays more extended half-life and greater bioavailability in comparison with monomeric sIL-15 and interacts primarily

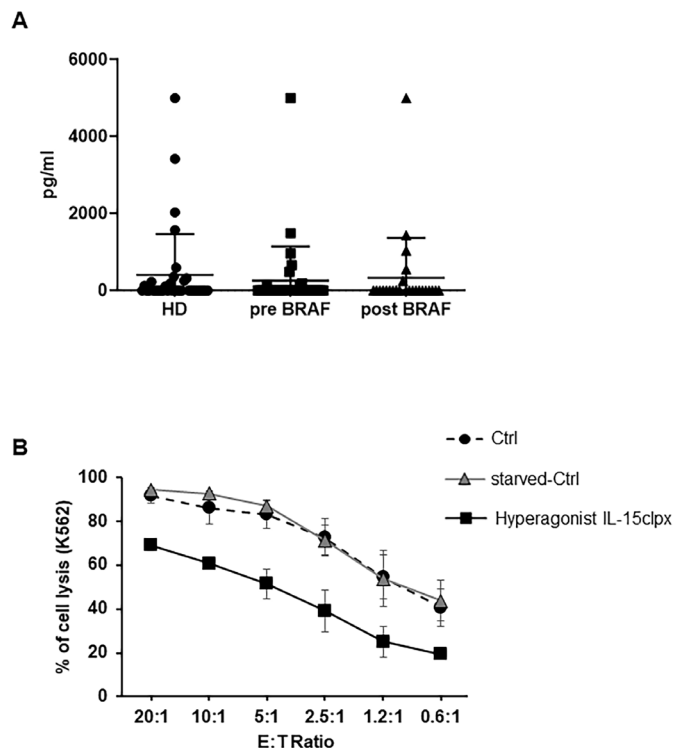


Figure 2 Detection of sIL-15/IL-15R α complex in human plasmas and effect of long-lasting stimulation of NK cells with the hyperagonist RLI. (A) Detection of sIL-15/IL-15R α complex in the plasma of HD and metastatic melanoma patients. Dot-Plot analysis of the levels of sIL-15/IL-15R α complex in the plasma from 35 HD and from 35 metastatic melanoma patients before and after anti-BRAF treatment. Quantification was performed by ELISA assay (for additional information see online supplemental material). (B) Analysis of the long-term stimulation on the cytotoxic potential of activated NK (aNK) cells with the Hyperagonist RLI. Percentage of K-562 cell lysis resulted by ANK cell cytotoxicity assays. Allogeneic ANK cells were used as effector cells against cell Tracker green labeled K-562 cells used as targets at different E:T ratios. Freshly NK cells were amplified over 12 days with rhIL-2 at 600 UI/mL. Thereafter, NK cells were either continuously fed with rhIL-2 (Ctrl) or starved for 36 hours and then restimulated over additional 8 days with rhIL-2 at 600 UI/mL (starved-Ctrl) or with Hyperagonist IL-15clpx at 1 ng/mL. Data were expressed as mean \pm SD (n=3). HD, healthy donors; NK, natural killer; rhIL-2, human recombinant interleukin; sIL, soluble IL.

with cells expressing the intermediate affinity IL-2R β / γ_c receptor.^{16–18} In addition to the soluble forms, IL-15 could be associated to the cell membrane acting via cell-cell contacts. Two membrane-bound forms of IL-15 have been reported: the transpresented form of IL-15 bound to membrane IL-15R α chains (tp-IL-15)^{14 16 19} and the IL-15 anchored to the cell membrane via an IL-15R α -independent mechanism (tmb-IL-15).^{20–22} IL-15 bound to IL-15R α is competent for signaling in *cis*,²³ but mainly it delivers signals in *trans* to surrounding cells expressing the dimeric IL-2R β / γ_c receptor. This novel mode of action, called IL-15 transpresentation,¹⁹ has been demonstrated to be the dominant mechanism by which IL-15 delivers

its signal in vivo to support the development and the functions of NK and CD8 T cells.^{24 25} IL-15 transpresentation requires that IL-15 binds to IL-15R α within the cells before emerging to the cell surface^{14 26} (figure 1A). This signaling mechanism requires the cleavage of the tp-IL-15 complex from presenting cells and its internalization by responding cells that store and use cleaved tp-IL-15 for their own proliferation and survival.¹⁶ However, we cannot exclude that sIL-15 could bind cytokine-free membrane-bound IL-15R α to promote consequently IL-15 trans-presentation to IL-2R β / γ_c receptor expressing cells. On the other hand, tmb-IL-15 is not only competent for signaling in *trans* to neighboring cells, but it can also deliver a reverse signal to the tmb-IL-15 positive cell on stimulation with recombinant sIL-15R α (sIL-15R α) chain or anti-IL-15 antibodies.^{20 21 27} Despite different kinetics of activation, all IL-15 forms transduce a similar signal to cells, activating the same pathways.²⁸ However, we have demonstrated in some conditions, that the tmb-IL-15, but not the soluble form, selectively activates Stat-6 in hematopoietic progenitors.¹⁴

Circulating forms of IL-15

Difficulties have been encountered to measure the amount of sIL-15, inherent to the presence of several forms. More commonly, researchers used ELISA methods to detect IL-15 proteins in cell cultures, serum or biological fluids. These methods are highly depend on the antibodies used as some of them target the interface of IL-15 facing IL-15R α rendering IL-15 undetectable. By contrast, other combination of antibodies are able to detect IL-15 bound or not to IL-15R α preventing to conclude on the involvement of one form from the other. Moreover, the existence of several isoforms of IL-15 and IL-15R α could also impact in the detection of the protein impairing the binding of the antibody. There is no commercially available detection kit to measure every forms of IL-15 at once, rendering the analysis of the presence of IL-15 in biological fluids and their relevance difficult. For instance, in order to measure exclusively the sIL-15/IL-15R α heterodimers in human sera: Bouchaud *et al*²⁹ developed a sandwich radioimmunoassay, while Bergamaschi *et al*³⁰ developed a chemiluminescent immunoassay. Both used for capture and detection different commercially available reagents chosen for assuring specific quantification. In figure 2, we employed the hIL-15/IL-15R α complex DuoSet ELISA from R&D Systems.

Finally, IL-15 has been demonstrated to mainly deliver its signal by transpresentation, thus biologically active IL-15 in its membrane-bound form would be undetectable by ELISA methods, underestimating the role of IL-15 in physiology as well as in pathology. However, measuring circulating IL-15 could give insights for abnormal production and aberrant target cell activations.

In mice

A first point to clarify is to identify which form of circulating IL-15 is present in the serum of HD. Indeed, it



has been postulated that all circulating IL-15 found in the serum of human and mice exists as heterodimeric complex associated with the sIL-15R α , thus excluding the presence of circulating cytokine in its monomeric form.³⁰ This assertion, in our opinion, is only partially plausible in mice in which sera there is a constant detection of sIL-15R α that binding to circulating IL-15 may generate, at least in part, a fraction of the sIL-15/IL-15R α complex.^{20 30 31} In addition, a recent paper shows that, in murine sera, the free monomeric sIL-15 form is more abundant than the sIL-15/IL-15R α complex, this latter representing only 14% of the circulating cytokine.⁵ By contrast, in mice stimulated with lipopolysaccharide or polyinosinic-polycytidylic acid (pI:C), sIL-15 was mostly associated to IL-15R α , as a sIL-15/IL-15R α complex.²⁶ These data strongly suggest that in 'resting mice' only a minor fraction of IL-15 is represented by the soluble complex, which may be necessary to feed some lymphoid subsets. On the contrary, in inflammatory and infectious settings most of circulating IL-15 is converted to the soluble complex isoform thus acting as a rapid alert response to pathological situations.

In humans

In human HD sera, the monomeric IL-15 serum concentration ranges between 1 and 6 pg/mL^{32–35} and its role is to foster specific lymphoid subsets.^{10–13} Indeed, in pathological conditions, such as lymphodepleted patients, serum level of monomeric sIL-15 rapidly raises to supraphysiological concentrations due to the absence of the natural cellular sinks. The cut-off point, defining elevated supraphysiological concentrations, is 20 pg/mL.³⁵ These values can be detected in several inflammatory diseases^{29 32–35} and in arthritis patients, where they are associated to more severe disease.³²

Concerning the detection of sIL-15/IL-15R α in human sera, the few papers that have investigated this point showed that sIL-15/IL-15R α has been detected at concentrations ranging between 43 and 231 pg/mL in the plasma of eight out of eight metastatic melanoma patients undergoing lymphodepletion³⁰ which, per se, could amplify the phenomenon. By contrast, Bouchaud *et al* have studied 37 HD showing that their serum levels of the sIL-15/IL-15R α were barely detectable.²⁹

In **figure 2A**, we have investigated both the presence and the level of the sIL-15/IL-15R α complex in plasmas of 35 HD: about one in three of the plasmas resulted positive with values ranging from 0.3 ng/mL up to 5 ng/mL. Plasmatic absence of the soluble complex may simply reflect a constant consumption by PB natural cellular sinks for this cytokine. Alternatively, the complex is not secreted in order to avoid the excessive stimulation of immune cells in comparison with that induced by monomeric sIL-15.^{14–18} On the other hand, plasmatic detection in one third of the 'HD' could be due to benign unapparent inflammatory conditions at the time of the blood withdrawal. Indeed, in animal models, the transient secretion of the sIL-15/IL-15R α complex is elicited

by inflammatory stimuli and viral infections thus acting as response to specific situations requiring rapid and powerful activation of cytolytic subsets.³⁶ Interestingly, two of the enrolled HD, subsequently resulted to be affected by chronic renal diseases.

Different forms of human IL-15/IL-15R α complexes

These data point out two major questions about the origin of the soluble complex in humans and about its physiological and pathological significance. Differently from what happens in rodents,^{20 31} in healthy humans spontaneous secretion of sIL-15R α cannot be detected.^{36–39} Therefore, the soluble complex seems not to derive by the coupling of free monomeric IL-15 with sIL-15R α . This mechanism may be at play in a limited number of neoplastic or inflammatory diseases characterized by the presence of detectable amounts of sIL-15R α in patients.^{29 37 40} In humans, the likely origin of the soluble complex is the intracellular assembly, in specialized cells, of IL-15 with specific isoforms of IL-15R α , generated by alternative splicing, that could result in different types of soluble complex displaying specific properties.

In this context, eight isoforms of IL-15R α have been initially described and resulted from alternative splicing of exon 3 and/or alternate usage of exon 7 or 7⁷ and the alternative splicing of exon 2.³⁸ All these isoforms were characterized by their high binding affinity to IL-15^{7 38} and for their capacity to migrate to cell membrane or to the nuclear membrane.³⁸ Interestingly, the isoforms lacking exon 2, unable to bind IL-15, were detected at the plasma membrane at high density and were supposed to display regulatory functions competing for recruitment of the IL-2R β and γ_c transducing subunits.³⁸ Subsequently, we discovered the natural proteolytic release (NPR) of human sIL-15R α acting as a specific high affinity IL-15 antagonist acting through the IL-15R α /IL-2R β / γ_c trimeric receptor, thus showing for the first time the existence of an IL-15R α isoform with a specific function.³⁹ More recently, Müller *et al* detected eight new N-terminal and C-terminal splice variants of human IL-15R α influencing whether IL-15 would be secreted or expressed on cell membrane.⁴¹ The isoforms containing the Ex2A domain, such as the wild type (WT) IL-15R α , prevent the release of the IL-15/IL-15R α heterodimers from cell membranes thereby facilitating its transpresentation function. In addition, some C-terminal Ex2A⁺ isoforms, expressing alternative intracellular domains (AID), would form mbIL-15/IL-15R α -IC-AID competent for triggering a reverse signaling within the IL-15/IL-15R α -producing cells. Finally, the IC3 isoform that does not contain the Ex2A domain functions as a soluble secreted cytokine that is more efficient in stimulating CD8⁺ T-cells and NK cells proliferation, than the IL-15/IL-15R α WT heterodimer.⁴¹ Thus, it appears increasingly likely that each IL-15R α isoform displays specific distinct functions.

Based on these results, **figure 1B** illustrates 4 forms of the IL-15/IL-15R α complex related to the isoform of the IL-15R α chain involved in the complex: (1) membrane

bound uncleavable forms bearing the IL-15R α EX2 isoforms competent for signaling in *cis* and *trans* (2) a soluble complex bearing the NPR-IL-15R α without biological activity (3) membrane bound uncleavable forms bearing IL-15R α -IC-AID isoforms competent for reverse signaling (4) a soluble complex consisting of the IL-15R α -IC3 isoform with high biological activity. The existence of the form without biological activity well documented in Crohn Disease (CD), a disorder characterized by elevated levels of inflammatory cytokines such as TNF α , IL-6, IL-1 β and IL-15. CD patients, who responded to treatment with Infliximab, show an increase in serum level of sIL-15R α and the IL-15/sIL-15R α complex in concomitance with a decrease of IL-15. Infliximab induced the proteolytic release of IL-15R α from epithelial cells, thus neutralizing IL-15 through its soluble receptor.²⁹ Accordingly, in each pathological context, it will be necessary to identify the cells responsible for the production of sIL-15/sIL-15R α . In a physiological setting, expression of IL-15 displays hierarchical expression among myeloid cells, while in a neoplastic setting, sIL-15/sIL-15R α is produced by particular subsets of myeloid cells present in the TME and, in some instances, by tumor cells themselves. Subsequently, it will be necessary to identify within the producer cells the predominant IL-15R α isoforms. This will allow to deduce which type of soluble complex is present in the plasma and to determine its biological activity, analyzing, for instance, the signal transduction activated in resting NK by the soluble complex purified from the sera.

IL-15 and IL-15R α in cancer

Even if IL-15 is a promising therapeutic tool, it must be stated that the expression of IL-15 and/or IL-15 receptors can be detected in several leukemia-derived and solid tumor-derived cell lines, where they display protumorigenic properties.

Hematological Malignancies

In humans, differently from mice,^{29 30} sIL-15R α is not detectable or it is present at very low levels in the sera of HD but it is present in patients affected by different diseases.^{37 40} For instance, T-cell large granular lymphocyte leukemia (LGL) is characterized by increased serum levels of sIL-15R α , composed by the natural shed form of sIL-15R α as well as the alternatively spliced form of sIL-15R α suggesting different cellular sources. In addition, IL-15R α expression is upregulated in patients' PB mononuclear cells as well. Upregulation of IL-15R α could protect IL-15 from proteolysis, decrease the IL-15 response threshold of the cells, and sIL-15R α complexed with monomeric circulating IL-15 (sIL-15) may generate the soluble complex. Both events may participate to progression of the disease.³⁷ Moreover, LGL cells express tp-IL-15,⁴² that via signaling in *cis* and in *trans*^{14 18 22}, could facilitate leukemic cells expansion.⁴²

IL-15 can act as growth and viability factor for malignant T cells in lymphoma patients. Skin lesions and PB

T-cells of cutaneous T-cell lymphoma patients show overexpression of both IL-15 mRNA and protein.^{43 44} In these patients, survival of malignant CD4⁺ T-cells is dependent, in the early stages, on IL-15 supplied from the microenvironment, but during disease progression, malignant cells, through autocrine IL-15 production, may autonomously support their growth and survival.⁴³ In human T-cell lymphocytic virus leukemia, viral Tax protein induces the production of both IL-15 and IL-15R α and this IL-15 autocrine loops leads to leukemia progression.^{44 45} In multiple myeloma, malignant plasma cells display functional IL-15 receptor with increased expression of the IL-15R α chain and autocrine production of IL-15, these phenomena favor survival and proliferation of malignant cells independently from their microenvironment.⁴⁶ All these data are summarized in (online supplemental table 1).

Solid cancer

Increased levels of sIL-15R α in the serum of patients with head and neck cancer and high intratumoral IL-15 concentration, are highly correlated with poor clinical outcome.^{40 47} Clinical studies report a correlation between high intratumoral IL-15 concentrations and poor clinical outcome also in patients with lung cancer.⁴⁸

Concerning human melanomas, we had previously shown that IL-15 produced by primary melanoma cell cultures, was involved in tumor escape mechanisms and in the activation of pro-inflammatory signals.^{8 49} In analogy, injection of small concentrations of human recombinant IL-15 (rhIL-15) in nude mice caused the development of much more aggressive tumors on subcutaneous implantations of human melanoma cells.⁵⁰ The above-mentioned data,^{8 40 47-50} together with the detection of high levels of sIL-15/IL-15R α in the serum of metastatic melanoma patients,³⁰ strongly suggests that the generation of intratumoral and/or circulating sIL-15/IL-15R α complexes may contribute to the development of a tumor microenvironment favorable to tumor progression and immune escape.

However, there are exceptions to the above described behavior since, in some solid tumors, the IL-15/IL-15R α complex may also play an antineoplastic role. For instance, in mice implanted with various tumor cell lines, the sIL-15/IL-15R α complexes are abundant in the interstitial fluid of freshly implanted tumors and their expression anticipates the infiltration of tumor infiltrating lymphocytes that play a major role in tumor regression. By contrast, the relative levels of sIL-15/IL-15R α complexes are low in mice with advanced tumors and are associated with tumor progression. However, in advanced tumors the sIL-15/IL-15R α complexes can be rescued by intratumoral activation of stimulator of interferon genes leading to tumor regression.⁵¹ These are intriguing results, even if they have been obtained in mice implanting a limited number of cell lines. It could be interesting to evaluate these parameters studying the development of chemically or virus induced tumors, looking for the density of stromal cells producing the sIL-15/IL-15R α complexes, together

with the quali-quantitative characteristics of infiltrating immunocompetent cells. Concerning human tumors, triple negative breast cancer cells overexpress IL-15R α , and the concomitant expression of IL-15 in IL-15R α -expressing cells, stimulates an autocrine signaling cascade in the absence of IL-2R β - and IL-2R γ_c chains, promoting cell proliferation, migration and blocking apoptosis. Nevertheless, in this subset of high-grade breast tumors, coexpression of IL-15 and IL-15R α is associated with better survival outcomes. This is likely, due to the fact that IL-15 and IL-15R α coexpressed on cancer cells could paracrinely activate infiltrating mononuclear cells potentially leading to an anti-tumor immune response.⁵²

Intrarenal IL-15, produced by tubular and cortical cells, plays a major role in the preservation of epithelial homeostasis (for review see⁵³). By contrast, renal clear carcinoma cells (RCCs) do not secrete IL-15,²⁷ but express tmb-IL-15^{54 55} and do not express neither in vitro nor in vivo the γ_c chain and JAK3, its signaling partner.⁵⁶ Thus, in RCCs, both recombinant IL-15 (rhIL-15) and tmb-IL-15 transduce an unbalanced signal promoting the epithelial mesenchymal transition, thus behaving as protumorigenic factors.^{54 56} By contrast, renal cancer stem cells express the IL-15R α /IL-2R β / γ_c heterotrimeric receptor. This receptor, when stimulated by rhIL-15, promotes the generation of polarized, non-tumorigenic and IL-15 secreting epithelial cells that behave as 'normal cells' being capable of autocrine IL-15 production.^{53 57} Thus, IL-15 may display at the same time pro-tumor and anti-tumor effects depending on the subset of renal cancer cell involved. It is tempting to speculate that the induction of γ_c chain obtained in vitro in RCC cells using ERK1/2 inhibitors,⁵³ in vivo could induce a modified microenvironment more suitable for IL-15 therapeutic use.

In prostate cancer (PC), IL-15 overexpression is associated with recurrence-free survival suggesting that IL-15 could represent a potential prognostic biomarker.⁵⁸ Subsequently, it has been shown that IL-15 decreases PC cells migration and invasion in vitro and in vivo. In addition, the presence of IL-15 in the tumor microenvironment decreases proliferation and blood vessel formation, suggesting that IL-15 may display antitumor effects inducing inflammation and shaping the stroma.⁵⁹ Immunostaining of 70 colon cancer biopsies and implantation of human colon cancer cells in nude mice show that IL-15 is produced by metastatic colon carcinoma cells and can induce hyperplasia in the mucosa adjacent to colon cancer, thus contributing to angiogenesis and tumor progression.⁶⁰ In addition, IL-15 promotes in vitro the proliferation, motility, and invasiveness of human colon cancer cells as well as increase their resistance to apoptosis.⁶¹ By contrast, in human patients, it has been recently shown that loss of IL-15 expression in about 30% of metastatic patients correlates with lower T-cell density, decreased T-cell proliferation, high risk of relapse and decreased survival.⁶²

The above-mentioned results (summarized in online supplemental table 2), show how the role of intratumoral

IL-15 is complex, ambivalent and dependent on several, not fully elucidated, factors such as the type of IL-15 produced, the IL-15-R α chain isoforms involved in sIL-15/IL-15R α complexes, the presence of functional IL-15 receptor on tumor cells as well as their response to stromal and endogenous IL-15. Thus, it is difficult to foresee if circulating and intratumoral IL-15 will behave as friend or foe, at present we suspect that on the long term the role of foe will emerge.

IL-15, sIL-15/IL-15R α complex and cancer treatment

Preclinical models

Given the target cell specificity, IL-15 looks more promising than other cytokines in enhancing the efficacy of effector cells against tumors and viral infections.^{63–65} Indeed, rhIL-15 or the sIL-15/IL-15R α used either alone or in combination with other treatments, have shown efficacy in several experimental tumor models^{66–69} (data summarized in table 1). However, these results should be revisited taking into account which species has been employed as source of IL-15 in the experiments. An underestimated point concerns the type of soluble complex employed in the different mouse models. Indeed, human IL-15/IL-15R α heterodimers are highly effective without causing side effects^{16 17 70–75} By contrast, mouse sIL-15/IL-15R α or human sIL-15/IL-15R α in humanized mice are associated with important detrimental effects or generation of inefficient NK cells, highlighting the existence of negative feedbacks counteracting excessive NK stimulation.^{76–78} The above-mentioned discrepancies indicate that mouse cells are more sensitive to murine IL-15 than to human IL-15 and suggest the existence of species-related differences in the activity of IL-15 in mouse models. This must be taken into account when comparing the effects of IL-15 across species.⁷⁹

Another point to consider is the target specificity of the different IL-15 isoforms. In this context, using a new series of transgenic mice delivering IL-15 as sIL-15 or complexed to IL-15R α , distinct effects have been identified on NK or CD8⁺ T-cells.⁸⁰ Thus, mature NK cells are rescued exclusively by monomeric IL-15 (sIL-15) that also mediates a powerful antimetastatic response in a model of mouse melanoma.⁸⁰ These data underline the specific role of NK cells in the control of metastatic spread.^{80–82} In this model, even if the levels of IL-15⁸⁰ are clearly supra physiological, it seems that, at least in mice, each IL-15 form could have specific targets.

Finally, we should also consider the IL-15-dosing regimens.

A first study employing transgenic mouse engineered to constitutively overexpress sIL-15 (mean \pm SEM, 186.7 \pm 41.8 pg/mL) exhibited early expansions of NK and CD8⁺ T-cells. Later, these mice developed fatal lymphocytic leukemia with a T-NK phenotype.⁸³ These data suggest that in vivo prolonged exposure to supra physiological concentrations of IL-15 may be highly detrimental. More recently, two other studies investigated the impact of transient and prolonged in vivo stimulation by the

Table 1 IL-15, sIL15/IL15R α complex and cancer treatment: preclinical models

Tumor type	IL-15 isotype employed	Outcome	Reference
B-16 melanoma	rhIL-15+adoptive cell transfer	Tumor regression	65
Metastatic colon carcinoma	Murine recombinant IL-15 (mrIL-15)+blockade of checkpoints inhibition	Longer survival of tumor-bearing animals	66
Colon carcinoma	mrIL-15+anti-CD40 Abs	Longer survival of tumor-bearing mice	67
Lung cancer	DC transduced with viral vectors based on simian virus 40 expressing IL-15 (rSVIL-15)	Complete tumor remission in 73% of mice	68
MC38 colon carcinoma and TC-1 epithelial carcinoma	Superagonist het IL-15	delayed primary tumor growth+Increased NK and CD8+T cell tumor infiltration	74
Colon carcinoma	Hyperagonist RLI+PD1 blockade	Complete tumor remission in 100% mice	73
B-16 melanoma	Superagonist het IL-15+adoptive T cell transfer	Decreased of tumor size	69
B-16 melanoma	Hyperagonist RLI	Reduced no	70
B-16 melanoma	CD11c-driven IL-15	Total lung metastasis inhibition	80
4T1 mouse mammary carcinoma	Hyperagonist RLI	Lung metastasis inhibition	72

Hyperagonist RLI, IL15R α -linker-IL15. Is a fusion protein linking the NH2-terminal domains of IL15R α to IL15 through a 20-amino acid linker

DC, dendritic cell; IL-15, interleukin 15; mrIL-15, murine recombinant IL-15; NK, natural killer; rhIL-15, human recombinant IL-15 ; rSVIL-15, simian virus 40 expressing IL-15.

sIL-15/IL-15R α complex on NK and CD8⁺ T cells. Elpek and coll. have shown that 2 weeks stimulation of CD8⁺ T cells with sIL-15/IL-15R α induced an activated phenotype, robust T-cell receptor stimulation and effector function. By contrast, this regimen caused an accumulation of mature NK cells with considerably impaired activation, cytotoxicity and proliferative activity.⁷⁸ More recently, Frutoso *et al*, have shown in vivo that NK cells respond to a single stimulation cycle with sIL-15 or the sIL-15/IL-15R α complex, while they become hyporesponsive and fail to expand after a second cycle of stimulation. This could be due to the contemporary expansion of CD44⁺CD8⁺ T cells. These data highlights as an excessive stimulation of NK cells by sIL-15 and sIL-15/IL-15R α complexes may induce NK hyporesponsiveness.⁸⁴ Indeed, prolonged NK cell activation using ionomycin as well as repeated exposure to Toll-like receptors (TLRs) agonists and⁸⁵ repeated injections of interferon (IFN)- α ⁸⁶ induced decreased cytolytic function and cytokine production.⁸⁷ Both TLRs and IFN- α stimulation increase production of IL-15, IL-15R α and/or of the soluble complex^{36 85 86 88 89} that are potentially responsible of NK cells exhaustion. These data would suggest that regimens based on prolonged stimulation with IL-15 and IL-15 superagonist should be avoided.

Clinical trials

rhIL-15 is currently under investigation in several Phase I clinical trials (NCT02395822, NCT01385423, NCT03388632, NCT01572493, NCT01021059, NCT01369888, NCT01875601) in which the cytokine is administered employing different dosing regimens, including intravenous bolus and subcutaneous and

continuous infusion of monomeric sIL-15 both in adult and pediatric solid tumors.⁹⁰⁻⁹⁴ There is also a number of clinical trials (NCT01727076, NCT01885897, NCT02523469), based on the utilization of an IL-15N72D/IL-15R α -Fc super-agonist complex, termed N-803 (formerly Alt-803, from NantKwest, Culver City, California, USA) supposed to maximize expansion and priming of immune cells (NK and CD8⁺ T-cells).^{95 96} However, in the latter setting a drawback rises from the rapid consumption of the injected IL-15 agonists due to the rapid and huge expansion of the target immune cells.⁹⁷ The above-mentioned clinical trials are summarized in [table 2](#).

In addition, the repeated stimulation with rhIL-15 in patients with cancer may result detrimental. Indeed, a recent study has shown that one rhIL-15 infusion led to an increase in NK cell expansion and proliferation in the PB of patients, whereas a second infusion of rhIL-15 resulted in a decrease in NK cell responses.⁹⁸ Moreover, two recent studies also show that repeated cycles of N-803 injection may lead to reduced biological responsiveness in NK cells of SIV⁺ macaque⁹⁹ and, in a phase 1b trial, in patients with metastatic non-small cell lung cancer.¹⁰⁰

These data open up two questions: NK hyporesponsiveness observed in cancer patients receiving repeated cycles of IL-15 or soluble complex is induced by the contemporary expansion of an inhibitory T cell subset as reported in mice⁸⁴ or may be directly induced by IL-15 and/or the super-agonist complex? If the second hypothesis holds true, ex vivo protocols for the expansion of NK cells intended to be reinjected in patients with cancer as a complementary immunologic treatment should be

**Table 2** IL-15-based clinical trial

Clinical trial	Dosing regimen	Tumor type	Phase	Efficiency	Side effects	Reference
NCT02359822	Subcutaneous rhIL-15	Acute myeloid leukemia	Phase 1/2	40% remission	CRS 56% Neurotoxicity 33%	90
NCT01385423	Intravenous rhIL-15	Acute myeloid leukemia	Phase 1/2	32% complete remission	No	90
NTC03388632	Intravenous Bolus rhIL-15	Metastatic malignancies	Phase 1	Stable Disease	3 µg/kg thrombocytopenia +hypotension 0.3 µg/kg no side effects	91
NCT01572493	Continuous intravenous infusion rhIL-15	Metastatic malignancies	Phase 1	Significant expansion of CD8+ and NK cell	30% serious adverse events	92
NCT01021059	Bolus infusion rhIL-15	Metastatic melanoma and RCC	Phase 1	Dramatic expansion of NK and γδ T cells	3 µg/kg thrombocytopenia +hypotension 0.3 µg/mL no side effects	93
NCT01727076	Subcutaneous rhIL-15	Metastatic malignancies	Phase 1	Stable disease dramatic NK expansion and discrete CD8+T cells expansion	Grade 2: Pancreatitis Grade 3: cardiac chest pain	98
NCT01369888	CY+Fludarabine+TILs+rhIL-15	Melanoma	Phase 1		autoimmune toxicity	101
NCT01875601	Intravenous autologous NK cell infusion+rhIL-15	Solid tumors, brain tumors, sarcoma, pediatric cancers, neuroblastoma	Phase 1	Safety		94
NCT01727076	Subcutaneous N-803	Metastatic malignancies	Phase 1	NK expansion	Injection skin rash	95
NTC01727076	Intravenous N-803	Metastatic malignancies	Phase 1	NK expansion	Nausea, fatigue	95
NTC01885897	Intravenous N-803	Hematologic malignancies relapsing after allo-hematopoietic cell transplantation (HCT)	Phase 1	Clearance of lung metastasis in two patients. Modest expansion of NK and CD8+T cells	Fever chills and rigors	96
NCT01885897	Subcutaneous H-803	Hematologic malignancies relapsing after allo-HCT	Phase 1	Sustained expansion of NK and CD8+T cells	Injection skin rash	96
NCT02523469	Subcutaneous H-803+PD1 Blockade	Non-small-cell lung carcinoma	Phase 1b	Reinduction of response to PD-1 blockade	Injection skin rash	100

HCT, allo-hematopoietic cell transplantation; NK, natural killer; RCC, renal clear carcinoma cell; rhIL-15, human recombinant interleukin-15.

revisited. Felices and coll. have investigated this point and their data indicate that continuous treatment of NK cells, over a 9-day period, with rhIL-15 at 20 ng/mL resulted in decreased viability, cell cycle arrest gene expression pattern, decreased function both in vitro and in vivo, and reduced tumor control.¹⁰¹ These data are truly alarming, since the IL-15 concentration employed (20 ng/mL) thought being supra-physiologic, is in the range of those employed by dozens of laboratories working on NK cells. These data are difficult to explain, but it is possible that this behavior occurs commonly at different degrees and

may be underestimated in the routinely practice. An alternative explanation could reside in the proneness of recombinant IL-15, suspended in classical buffers, to rapidly undergo self-aggregation with loss of biological activity.¹⁰² Thus IL-15 suspended in classical buffers maintained for even few days at 4°C, may lose biological activity in an unpredictable way generating incertitude concerning the real concentration employed that could result partially inefficient in stimulating NK cells. In this respect, the use of an anti-cytokine aggregation buffer

solves the above mentioned problems (unpublished results).

The presence of high level of the sIL-15/IL-15R α complex in lymphodepleted melanoma metastatic patients could be essentially due to the lymphodepletion that would cause the loss of natural sinks leading to temporary increase of the plasmatic sIL-15/IL-15R α complex. In order to solve this question, we analyzed the plasma from 35 non-lymphodepleted metastatic melanoma patients. We observed that one third of them resulted highly positive before anti-BRAF treatment and maintained this positivity after therapy showing long-lasting supra-physiological plasmatic levels of sIL-15/IL-15R α only in a subset of patients (figure 2A). Since NK cells are major players in the control of the metastatic evolution,⁸² we wondered whether the high levels of the sIL-15/IL-15R α complex, detected in the plasma of metastatic melanoma patients undergoing³⁰ or not lymphodepletion, would display or not biological activity on NK cells. In the latter instance, high level of a soluble complex lacking biological activity^{29,39} could act as a decoy cytokine unable to provide homeostatic signals to their cellular sinks present in the PB.¹⁰⁻¹³ By contrast, constant high plasmatic levels of a soluble complex at high biological activity could induce suboptimal NK activation of: (1) PB-NK cells for instance in metastatic patients, or (2) NK cells pre-expanded ex vivo and destined to NK cell-based anti-tumor therapies.^{96,97} The latter issue could be tentatively solved by the in vivo silencing of the IL-15R α -IC3 isoform responsible for the assembly of the soluble complex at high biological activity.⁴¹ In order to investigate the latter point we developed an in vitro protocol for mimicking this situation. For this purpose, NK cells were expanded during 12 days with IL-2, shortly starved and then refed for 8 days either with the hyperagonist IL-15clpx¹⁵ or with IL-2 (starved-Ctrl). At the same time, NK cells were continuously maintained in IL-2 without starvation and served as control (Ctrl). NK cells fed with Hyperagonist IL-15clpx exhibited a statistically significant reduction of cytotoxic effects on K-562 target cells as compared with Ctrl and starved-Ctrl NK cells (figure 2B), suggesting that Hyperagonist IL-15clpx could really cause direct functional NK impairment.

Upcoming IL-15-based combined immunotherapies

Finding a single agent-based therapy effective in causing complete tumor regression and long-lasting anti-tumor responses represents a real challenge owing to the multiple immunological barriers/escape mechanisms present in tumors. While having some efficacy in inducing tumor regression as a monotherapy, IL-15 isoforms show a greater potential when used in combination with other immunotherapies. Indeed, very efficient anti-tumor effect was detected in the preclinical pulmonary metastasis model using CT26 colon carcinoma cells, when N-803 was combined with the checkpoint inhibitors anti-CTLA-4 and anti-PD-L1. This treatment markedly expanded subsets of NK and memory CD8⁺ T cells.

The improved NK cells function played a fundamental role in reducing tumor metastases and mice survival.¹⁰³ A marked antitumor effect was obtained in combination therapies using sIL-15 or IL-15/IL-15R α with checkpoint blocking antibodies targeting either PD-L1 or CTLA-4. In addition, combination of IL-15 superagonists (hyperagonist RLI and N-803) and blocking antibodies against PD-L1 and CTLA-4 resulted in remarkable improvement in antitumor responses leading to increased survival and reduced tumor growth in several preclinical models (for review see ref. 94). Moreover, in MHC class I-deficient melanoma, refractory to CD8⁺ T cell-mediated immunity, combination of IL-15 with TIGIT blockade could rescue antitumor NK cell-mediated cytotoxic activity and inhibit tumor metastasis in two mouse melanoma models.¹⁰⁴ Recently, the group of Huntington identified the cytokine-inducible SH2-containing protein (CIS) as a critical negative regulator of IL-15 signaling in NK cells. Targeting CIS improved NK cell ex vivo proliferation and anti-tumor functions without any apparent secondary or off-target effects. Thus, the inhibition of CIS constitutes a novel method of unleashing the NK cell antitumor response with important perspectives in clinical immunotherapy.¹⁰⁵ Finally, an important synergistic antitumor activity was shown after administration of agonistic anti-CD40 Abs in combination with IL-15 in preclinical models of colon, prostatic and pancreatic cancers.^{67,106,107} These novel preclinical data support the scientific basis for clinical trials employing this combination immunotherapy strategy for the treatment of patients with cancer. The promising results of pre-clinical models led to the development of human protocols. For instance, the combination of ex vivo IL-15-activated NK cells with anti-NKG2A blocking mAbs revealed an effective strategy for the treatment of multiple myeloma patients.¹⁰⁸

Overall, these data strongly support the notion that IL-15-based harnessing of NK cells, in combination with checkpoint inhibitors, may effectively unleash NK cells thus representing an effective therapeutic strategy, particularly in HLA-class I tumors that are 'invisible' to CD8⁺ T lymphocytes. This concept has relevance not only in adult malignancies, but also in the setting of several refractory or recurrent high-risk pediatric tumors.⁹⁴

CONCLUDING REMARKS

Plasmatic IL-15 in humans is present either as monomeric form or as soluble complex (sIL-15/IL-15R α), whose function likely depends on the IL-15R α isoform involved. Thus, a better knowledge of IL-15 and a correct use of both sIL-15 forms, in terms of concentrations, time of exposure and rapid consumption by target cellular sinks, is necessary in order to improve their therapeutic use, adopting for instance combinational protocols. Finally, the generation of high concentrations of circulating sIL-15/IL-15R α in some patients with cancer could represent a novel mechanism of immune escape.

Author affiliations

- ¹Immunology Area, Bambino Gesù Children's Hospital, IRCCS, Rome, Italy
²Immunology Unit, IRCCS Ospedale Policlinico San Martino, Genoa, Italy
³Department of Experimental Medicine (DIMES), University of Genoa, Genoa, Italy
⁴Center of Excellence for Biomedical Research (CEBR), University of Genoa, Genoa, Italy
⁵Clinical Immunology Unit, Department of Internal Medicine, University of Genoa and Ospedale Policlinico San Martino, Genoa, Italy
⁶Department of Immunology and Inflammation, Humanitas Clinical and Research Institute, Milan, Italy
⁷University of Nantes, CNRS, Inserm, CRCINA, University of Nantes, Nantes, France
⁸Immunotherapy, Graft, Oncology, LabEx IGO, Nantes, France

Contributors Conception and design: BA, SDM, EM, LM and PFF. Development of methodology: EM, NT, FRM and SDM. Analysis and interpretation of data: SDM, PFF, NT, FRM, BB, EM and BA. Writing and revision of the manuscript: BA, SDM, EM, SN, BB, GP, PFF and LM. Administrative, technical or material support: BB, SDM, GP, SO, SN, EM and NT. Study supervision: BA, EM and LM.

Funding This work was supported by grants from Associazione Italiana per la Ricerca sul Cancro (AIRC)-Special Program Metastatic disease: the key unmet need in oncology 5 per mille 2018 Id. 21 147. Italian Ministry of Health Id: RF-2016-02362288 (to GP); 5×1000 Italian Ministry of Health 2015 and 2016; RC-2019 IRCCS Ospedale Policlinico San Martino (to GP). Region Pays de la Loire PIRAMID 2015-08206, Fondation pour la Recherche Médicale DEQ201708 39118, Ligue Contre le Cancer R20034NN (to EM). FRM is recipient of a Fondazione Umberto Veronesi fellowship. SDM and NT were supported by AIRC fellowships for Italy.

Competing interests None declared.

Patient consent for publication Not required.

Ethics approval The use of human overflow plasmas and the research protocol were approved by Internal Ethics Boards of Humanitas, Rozzano, Italy (STEPS18) Clinical and Research Center and of the National Cancer Institute (IST, Genoa, Italy (OMA12.007). Buffy coats were collected from volunteer blood donors admitted to the blood transfusion service of OPBG after obtaining informed consent. The Ethical Committee of OPBG approved the study (825/2014) and it was conducted in accordance with the ethical principles stated in the Declaration of Helsinki.

Provenance and peer review Not commissioned; externally peer reviewed.

Supplemental material This content has been supplied by the author(s). It has not been vetted by BMJ Publishing Group Limited (BMJ) and may not have been peer-reviewed. Any opinions or recommendations discussed are solely those of the author(s) and are not endorsed by BMJ. BMJ disclaims all liability and responsibility arising from any reliance placed on the content. Where the content includes any translated material, BMJ does not warrant the accuracy and reliability of the translations (including but not limited to local regulations, clinical guidelines, terminology, drug names and drug dosages), and is not responsible for any error and/or omissions arising from translation and adaptation or otherwise.

Open access This is an open access article distributed in accordance with the Creative Commons Attribution Non Commercial (CC BY-NC 4.0) license, which permits others to distribute, remix, adapt, build upon this work non-commercially, and license their derivative works on different terms, provided the original work is properly cited, appropriate credit is given, any changes made indicated, and the use is non-commercial. See <http://creativecommons.org/licenses/by-nc/4.0/>.

ORCID iDs

Sabina Di Matteo <http://orcid.org/0000-0002-2586-7159>
 Bruno Azzarone <http://orcid.org/0000-0002-5962-3849>

REFERENCES

- Burton JD, Bamford RN, Peters C, *et al*. A lymphokine, provisionally designated interleukin T and produced by a human adult T-cell leukemia line, stimulates T-cell proliferation and the induction of lymphokine-activated killer cells. *Proc Natl Acad Sci U S A* 1994;91:4935-9.
- Grabstein KH, Eisenman J, Shanebeck K, *et al*. Cloning of a T cell growth factor that interacts with the beta chain of the interleukin-2 receptor. *Science* 1994;264:965-8.
- Waldmann TA. Interleukin-15 in the treatment of cancer. *Expert Rev Clin Immunol* 2014;10:1689-701.
- Fehniger TA, Caligiuri MA. Interleukin 15: biology and relevance to human disease. *Blood* 2001;97:14-32.
- Anderson BG, Quinn LS. Free IL-15 is more abundant than IL-15 complexed with soluble IL-15 receptor- α in murine serum: implications for the mechanism of IL-15 secretion. *Endocrinology* 2016;157:1315-20.
- Carson WE, Giri JG, Lindemann MJ, *et al*. Interleukin (IL) 15 is a novel cytokine that activates human natural killer cells via components of the IL-2 receptor. *J Exp Med* 1994;180:1395-403.
- Anderson DM, Kumaki S, Ahdieh M, *et al*. Functional characterization of the human interleukin-15 receptor alpha chain and close linkage of IL15RA and IL2RA genes. *J Biol Chem* 1995;270:29862-9.
- Pereno R, Giron-Michel J, Gaggero A, *et al*. IL-15/IL-15R α intracellular trafficking in human melanoma cells and signal transduction through the IL-15R α . *Oncogene* 2000;19:5153-62.
- Waldmann TA. The biology of interleukin-2 and interleukin-15: implications for cancer therapy and vaccine design. *Nat Rev Immunol* 2006;6:595-601.
- Dudley ME, Yang JC, Sherry R, *et al*. Adoptive cell therapy for patients with metastatic melanoma: evaluation of intensive myeloablative chemoradiation preparative regimens. *J Clin Oncol* 2008;26:5233-9.
- Boyiadzis M, Memon S, Carson J, *et al*. Up-Regulation of NK cell activating receptors following allogeneic hematopoietic stem cell transplantation under a lymphodepleting reduced intensity regimen is associated with elevated IL-15 levels. *Biol Blood Marrow Transplant* 2008;14:290-300.
- Gattinoni L, Finkelstein SE, Klebanoff CA, *et al*. Removal of homeostatic cytokine sinks by lymphodepletion enhances the efficacy of adoptively transferred tumor-specific CD8+ T cells. *J Exp Med* 2005;202:907-12.
- Anthony SM, Rivas SC, Colpitts SL, *et al*. Inflammatory signals regulate IL-15 in response to Lymphodepletion. *J Immunol* 2016;196:4544-52.
- Giron-Michel J, Giuliani M, Fogli M, *et al*. Membrane-Bound and soluble IL-15/IL-15R α complexes display differential signaling and functions on human hematopoietic progenitors. *Blood* 2005;106:2302-10.
- Mortier E, Quémener A, Vusio P, *et al*. Soluble interleukin-15 receptor alpha (IL-15R α)-sushi as a selective and potent agonist of IL-15 action through IL-15R β /gamma. Hyperagonist IL-15 x IL-15R α fusion proteins. *J Biol Chem* 2006;281:1612-9.
- Tamzalit F, Barbieux I, Plet A, *et al*. IL-15/IL-15R α complex shedding following trans-presentation is essential for the survival of IL-15 responding NK and T cells. *Proc Natl Acad Sci U S A* 2014;111:8565-70.
- Rubinstein MP, Kovar M, Purton JF, *et al*. Converting IL-15 to a superagonist by binding to soluble IL-15R α . *Proc Natl Acad Sci U S A* 2006;103:9166-71.
- Stoklasek TA, Schluns KS, Lefrançois L. Combined IL-15/IL-15R α immunotherapy maximizes IL-15 activity in vivo. *J Immunol* 2006;177:6072-80.
- Dubois S, Mariner J, Waldmann TA, *et al*. IL-15R α recycles and presents IL-15 in trans to neighboring cells. *Immunity* 2002;17:537-47.
- Bulfone-Paus S, Bulanova E, Budagian V, *et al*. The interleukin-15/interleukin-15 receptor system as a model for juxtacrine and reverse signaling. *Bioessays* 2006;28:362-77.
- Neely GG, Epelman S, Ma LL, *et al*. Monocyte surface-bound IL-15 can function as an activating receptor and participate in reverse signaling. *J Immunol* 2004;172:4225-34.
- Bo H, Wei X-Q, Dong H, *et al*. Elevated expression of transmembrane IL-15 in immune cells correlates with the development of murine lupus: a potential target for immunotherapy against SLE. *Scand J Immunol* 2009;69:119-29.
- Olsen SK, Ota N, Kishishita S, *et al*. Crystal structure of the interleukin-15/interleukin-15 receptor alpha complex: insights into trans and cis presentation. *J Biol Chem* 2007;282:37191-204.
- Burkett PR, Koka R, Chien M, *et al*. Coordinate expression and trans presentation of interleukin (IL)-15R α and IL-15 supports natural killer cell and memory CD8+ T cell homeostasis. *J Exp Med* 2004;200:825-34.
- Mortier E, Advincola R, Kim L, *et al*. Macrophage- and dendritic-cell-derived interleukin-15 receptor alpha supports homeostasis of distinct CD8+ T cell subsets. *Immunity* 2009;31:811-22.
- Mortier E, Woo T, Advincola R, *et al*. IL-15R α chaperones IL-15 to stable dendritic cell membrane complexes that activate NK cells via trans presentation. *J Exp Med* 2008;205:1213-25.
- Khawam K, Giron-Michel J, Gu Y, *et al*. Human renal cancer cells express a novel membrane-bound interleukin-15 that induces,

- in response to the soluble interleukin-15 receptor alpha chain, epithelial-to-mesenchymal transition. *Cancer Res* 2009;69:1561–9.
- 28 Perdreau H, Mortier E, Bouchaud G, et al. Different dynamics of IL-15R activation following IL-15 cis- or trans-presentation. *Eur Cytokine Netw* 2010;21:29–307.
 - 29 Bouchaud G, Mortier E, Flamant M, et al. Interleukin-15 and its soluble receptor mediate the response to infliximab in patients with Crohn's disease. *Gastroenterology* 2010;138:2378–87.
 - 30 Bergamaschi C, Bear J, Rosati M, et al. Circulating IL-15 exists as heterodimeric complex with soluble IL-15R α in human and mouse serum. *Blood* 2012;120:e1–8.
 - 31 Quinn LS, Anderson BG, Strait-Bodey L, et al. Serum and muscle interleukin-15 levels decrease in aging mice: correlation with declines in soluble interleukin-15 receptor alpha expression. *Exp Gerontol* 2010;45:106–12.
 - 32 Lamana A, Ortiz AM, Alvaro-Gracia JM, et al. Characterization of serum interleukin-15 in healthy volunteers and patients with early arthritis to assess its potential use as a biomarker. *Eur Cytokine Netw* 2010;21:186–94.
 - 33 Suzuki J, Morimoto S, Amano H, et al. Serum levels of interleukin 15 in patients with rheumatic diseases. *J Rheumatol* 2001;28:2389–91.
 - 34 Kakumu S, Okumura A, Ishikawa T, et al. Serum levels of IL-10, IL-15 and soluble tumour necrosis factor-alpha (TNF-alpha) receptors in type C chronic liver disease. *Clin Exp Immunol* 1997;109:458–63.
 - 35 Gangemi S, Basile G, Monti D, et al. Age-related modifications in circulating IL-15 levels in humans. *Mediators Inflamm* 2005;2005:245–7.
 - 36 Anthony SM, Howard ME, Hailemichael Y, et al. Soluble interleukin-15 complexes are generated in vivo by type I interferon dependent and independent pathways. *PLoS One* 2015;10:e0120274.
 - 37 Chen J, Petrus M, Bamford R, et al. Increased serum soluble IL-15R α levels in T-cell large granular lymphocyte leukemia. *Blood* 2012;119:137–43.
 - 38 Dubois S, Magrangeas F, Lehours P, et al. Natural splicing of exon 2 of human interleukin-15 receptor alpha-chain mRNA results in a shortened form with a distinct pattern of expression. *J Biol Chem* 1999;274:26978–84.
 - 39 Mortier E, Bernard J, Plet A, et al. Natural, proteolytic release of a soluble form of human IL-15 receptor alpha-chain that behaves as a specific, high affinity IL-15 antagonist. *J Immunol* 2004;173:1681–8.
 - 40 Badoual C, Bouchaud G, Agueznay NEH, et al. The soluble alpha chain of interleukin-15 receptor: a proinflammatory molecule associated with tumor progression in head and neck cancer. *Cancer Res* 2008;68:3907–14.
 - 41 Müller JR, Waldmann TA, Kruhlak MJ, et al. Paracrine and transpresentation functions of IL-15 are mediated by diverse splice versions of IL-15R α in human monocytes and dendritic cells. *J Biol Chem* 2012;287:40328–38.
 - 42 Zambello R, Facco M, Trentin L, et al. Interleukin-15 triggers the proliferation and cytotoxicity of granular lymphocytes in patients with lymphoproliferative disease of granular lymphocytes. *Blood* 1997;89:201–11.
 - 43 Döbbeling U, Dummer R, Laine E, et al. Interleukin-15 is an autocrine/paracrine viability factor for cutaneous T-cell lymphoma cells. *Blood* 1998;92:252–8.
 - 44 Azimi N, Brown K, Bamford RN, et al. Human T cell lymphotropic virus type I Tax protein trans-activates interleukin 15 gene transcription through an NF-kappa B site. *Proc Natl Acad Sci U S A* 1998;95:2452–7.
 - 45 Mariner JM, Lantz V, Waldmann TA, et al. Human T cell lymphotropic virus type I Tax activates IL-15R alpha gene expression through an NF-kappa B site. *J Immunol* 2001;166:2602–9.
 - 46 Tinhofer I, Marschitz I, Henn T, et al. Expression of functional interleukin-15 receptor and autocrine production of interleukin-15 as mechanisms of tumor propagation in multiple myeloma. *Blood* 2000;95:610–8.
 - 47 Nguyen ST, Hasegawa S, Tsuda H, et al. Identification of a predictive gene expression signature of cervical lymph node metastasis in oral squamous cell carcinoma. *Cancer Sci* 2007;98:740–6.
 - 48 Seike M, Yanaiharu N, Bowman ED, et al. Use of a cytokine gene expression signature in lung adenocarcinoma and the surrounding tissue as a prognostic classifier. *J Natl Cancer Inst* 2007;99:1257–69.
 - 49 Barzegar C, Meazza R, Pereno R, et al. IL-15 is produced by a subset of human melanomas, and is involved in the regulation of markers of melanoma progression through juxtacrine loops. *Oncogene* 1998;16:2503–12.
 - 50 Doucet C, Meazza R, Pottin-Clemenceau C, et al. Role of interleukin (IL)-2 and IL-15 in the tumour progression of a melanoma cell line MELP, derived from an IL-2 progressor patient. *Melanoma Res* 1997;7:S19–17.
 - 51 Santana Carrero RM, Beceren-Braun F, Rivas SC, et al. IL-15 is a component of the inflammatory milieu in the tumor microenvironment promoting antitumor responses. *Proc Natl Acad Sci U S A* 2019;116:599–608.
 - 52 Marra P, Mathew S, Grigoriadis A, et al. IL15RA drives antagonistic mechanisms of cancer development and immune control in lymphocyte-enriched triple-negative breast cancers. *Cancer Res* 2014;74:4908–21.
 - 53 Giron-Michel J, Azzi S, Ferrini S, et al. Interleukin-15 is a major regulator of the cell-microenvironment interactions in human renal homeostasis. *Cytokine Growth Factor Rev* 2013;24:13–22.
 - 54 Azzi S, Gallerne C, Romei C, et al. Human renal normal, tumoral, and cancer stem cells express membrane-bound interleukin-15 isoforms displaying different functions. *Neoplasia* 2015;17:509–17.
 - 55 Yuan H, Meng X, Guo W, et al. Transmembrane-Bound IL-15-Promoted epithelial-mesenchymal transition in renal cancer cells requires the Src-dependent Akt/GSK-3 β / β -catenin pathway. *Neoplasia* 2015;17:410–20.
 - 56 Giron-Michel J, Azzi S, Khawam K, et al. Interleukin-15 plays a central role in human kidney physiology and cancer through the γ C signaling pathway. *PLoS One* 2012;7:e31624.
 - 57 Azzi S, Bruno S, Giron-Michel J, et al. Differentiation therapy: targeting human renal cancer stem cells with interleukin 15. *J Natl Cancer Inst* 2011;103:1884–98.
 - 58 Blum DL, Koyama T, M'Koma AE, et al. Chemokine markers predict biochemical recurrence of prostate cancer following prostatectomy. *Clin Cancer Res* 2008;14:7790–7.
 - 59 Rohena-Rivera K, Sánchez-Vázquez MM, Aponte-Colón DA, et al. IL-15 regulates migration, invasion, angiogenesis and genes associated with lipid metabolism and inflammation in prostate cancer. *PLoS One* 2017;12:e0172786.
 - 60 Kuniyasu H, Ohmori H, Sasaki T, et al. Production of interleukin 15 by human colon cancer cells is associated with induction of mucosal hyperplasia, angiogenesis, and metastasis. *Clin Cancer Res* 2003;9:4802–10.
 - 61 Kuniyasu H, Oue N, Nakae D, et al. Interleukin-15 expression is associated with malignant potential in colon cancer cells. *Pathobiology* 2001;69:86–95.
 - 62 Mlecnik B, Bindea G, Angell HK, et al. Functional network pipeline reveals genetic determinants associated with in situ lymphocyte proliferation and survival of cancer patients. *Sci Transl Med* 2014;6:228ra37.
 - 63 Ahmad A, Ahmad R, Iannello A, et al. IL-15 and HIV infection: lessons for immunotherapy and vaccination. *Curr HIV Res* 2005;3:261–70.
 - 64 Diab A, Cohen AD, Alpdogan O, et al. IL-15: targeting CD8+ T cells for immunotherapy. *Cytotherapy* 2005;7:23–35.
 - 65 Klebanoff CA, Gattinoni L, Palmer DC, et al. Determinants of successful CD8+ T-cell adoptive immunotherapy for large established tumors in mice. *Clin Cancer Res* 2011;17:5343–52.
 - 66 Yu P, Steel JC, Zhang M, et al. Simultaneous blockade of multiple immune system inhibitory checkpoints enhances antitumor activity mediated by interleukin-15 in a murine metastatic colon carcinoma model. *Clin Cancer Res* 2010;16:6019–28.
 - 67 Zhang M, Yao Z, Dubois S, et al. Interleukin-15 combined with an anti-CD40 antibody provides enhanced therapeutic efficacy for murine models of colon cancer. *Proc Natl Acad Sci U S A* 2009;106:7513–8.
 - 68 Vera M, Razquin N, Prieto J, et al. Intratumoral injection of dendritic cells transduced by an SV40-based vector expressing interleukin-15 induces curative immunity mediated by CD8+ T lymphocytes and NK cells. *Mol Ther* 2005;12:950–9.
 - 69 Bergamaschi C, Pandit H, Nagy BA, et al. Heterodimeric IL-15 delays tumor growth and promotes intratumoral CTL and dendritic cell accumulation by a cytokine network involving XCL1, IFN- γ , CXCL9 and CXCL10. *J Immunother Cancer* 2020;8:e000599.
 - 70 Bessard A, Solé V, Bouchaud G, et al. High antitumor activity of RLI, an interleukin-15 (IL-15)-IL-15 receptor alpha fusion protein, in metastatic melanoma and colorectal cancer. *Mol Cancer Ther* 2009;8:2736–45.
 - 71 Guo Y, Luan L, Rabacal W, et al. IL-15 superagonist-mediated immunotoxicity: role of NK cells and IFN- γ . *J Immunol* 2015;195:2353–64.
 - 72 Desbois M, Béal C, Charrier M, et al. IL-15 superagonist RLI has potent immunostimulatory properties on NK cells: implications for antimetastatic treatment. *J Immunother Cancer* 2020;8:e000632.

- 73 Desbois M, Le Vu P, Coutzac C, *et al.* IL-15 trans-signaling with the superagonist RLI promotes Effector/Memory CD8⁺ T cell responses and enhances antitumor activity of PD-1 antagonists. *J Immunol* 2016;197:168–78.
- 74 Chertova E, Bergamaschi C, Chertov O, *et al.* Characterization and favorable in vivo properties of heterodimeric soluble IL-15-IL-15R α cytokine compared to IL-15 monomer. *J Biol Chem* 2013;288:18093–103.
- 75 Ng SSM, Nagy BA, Jensen SM, *et al.* Heterodimeric IL15 treatment enhances tumor infiltration, persistence, and effector functions of adoptively transferred tumor-specific T cells in the absence of Lymphodepletion. *Clin Cancer Res* 2017;23:2817–30.
- 76 Patil NK, Luan L, Bohannon JK, *et al.* IL-15 superagonist expands mCD8⁺ T, NK and NKT cells after burn injury but fails to improve outcome during burn wound infection. *PLoS One* 2016;11:e0148452.
- 77 Wege AK, Weber F, Kroemer A, *et al.* IL-15 enhances the anti-tumor activity of trastuzumab against breast cancer cells but causes fatal side effects in humanized tumor mice (hTM). *Oncotarget* 2017;8:2731–44.
- 78 Elpek KG, Rubinstein MP, Bellemare-Pelletier A, *et al.* Mature natural killer cells with phenotypic and functional alterations accumulate upon sustained stimulation with IL-15/IL-15R α complexes. *Proc Natl Acad Sci U S A* 2010;107:21647–52.
- 79 Eisenman J, Ahdieh M, Beers C, *et al.* Interleukin-15 interactions with interleukin-15 receptor complexes: characterization and species specificity. *Cytokine* 2002;20:121–9.
- 80 Polansky JK, Bahri R, Divivier M, *et al.* High dose CD11c-driven IL15 is sufficient to drive NK cell maturation and anti-tumor activity in a trans-presentation independent manner. *Sci Rep* 2016;6:19699.
- 81 Tallerico R, Conti L, Lanzardo S, *et al.* NK cells control breast cancer and related cancer stem cell hematological spread. *Oncoimmunology* 2017;6:e1284718.
- 82 López-Soto A, Gonzalez S, Smyth MJ, *et al.* Control of metastasis by NK cells. *Cancer Cell* 2017;32:135–54.
- 83 Fehniger TA, Suzuki K, VanDeusen JB, *et al.* Fatal leukemia in interleukin-15 transgenic mice. *Blood Cells Mol Dis* 2001;27:223–30.
- 84 Frutoso M, Morisseau S, Tamzalit F, *et al.* Emergence of NK cell hyporesponsiveness after two IL-15 stimulation cycles. *J Immunol* 2018;201:493–506.
- 85 Maluish AE, Ortaldo JR, Conlon JC, *et al.* Depression of natural killer cytotoxicity after in vivo administration of recombinant leukocyte interferon. *J Immunol* 1983;131:503–7.
- 86 Mattei F, Schiavoni G, Belardelli F, *et al.* IL-15 is expressed by dendritic cells in response to type I IFN, double-stranded RNA, or lipopolysaccharide and promotes dendritic cell activation. *J Immunol* 2001;167:1179–87.
- 87 Romera-Cárdenas G, Thomas LM, Lopez-Cobo S, *et al.* Ionomycin treatment renders NK cells hyporesponsive. *PLoS One* 2016;11:e0150998.
- 88 Colpitts SL, Stoklasek TA, Plumlee CR, *et al.* Cutting edge: the role of IFN- α receptor and MyD88 signaling in induction of IL-15 expression in vivo. *J.i.* 2012;188:2483–7.
- 89 Zhu Q, Egelston C, Gagnon S, *et al.* Using 3 TLR ligands as a combination adjuvant induces qualitative changes in T cell responses needed for antiviral protection in mice. *J Clin Invest* 2010;120:607–16.
- 90 Cooley S, He F, Bachanova V, *et al.* First-in-human trial of rhIL-15 and haploidentical natural killer cell therapy for advanced acute myeloid leukemia. *Blood Adv* 2019;3:1970–80.
- 91 Waldmann TA, Dubois S, Miljkovic MD, *et al.* IL-15 in the combination immunotherapy of cancer. *Front Immunol* 2020;11:868.
- 92 Conlon KC, Potter EL, Pittaluga S, *et al.* IL15 by continuous intravenous infusion to adult patients with solid tumors in a phase I trial induced dramatic NK-cell subset expansion. *Clin Cancer Res* 2019;25:4945–54.
- 93 Conlon KC, Lugli E, Welles HC, *et al.* Redistribution, hyperproliferation, activation of natural killer cells and CD8 T cells, and cytokine production during first-in-human clinical trial of recombinant human interleukin-15 in patients with cancer. *J Clin Oncol* 2015;33:74–82.
- 94 Robinson TO, Schluns KS. The potential and promise of IL-15 in immuno-oncogenic therapies. *Immunol Lett* 2017;190:159–68.
- 95 Margolin K, Morishima C, Velcheti V, *et al.* Phase I trial of ALT-803, a novel recombinant IL15 complex, in patients with advanced solid tumors. *Clin Cancer Res* 2018;24:5552–61.
- 96 Romee R, Cooley S, Berrien-Elliott MM, *et al.* First-In-Human phase 1 clinical study of the IL-15 superagonist complex ALT-803 to treat relapse after transplantation. *Blood* 2018;131:2515–27.
- 97 Hangasky JA, Waldmann TA, Santi DV. Interleukin 15 pharmacokinetics and consumption by a dynamic cytokine sink. *Front Immunol* 2020;11:1813.
- 98 Miller JS, Morishima C, McNeel DG, *et al.* A first-in-human phase I study of subcutaneous outpatient recombinant human IL15 (rhIL15) in adults with advanced solid tumors. *Clin Cancer Res* 2018;24:1525–35.
- 99 Ellis-Connell AL, Balgeman AJ, Zarbock KR, *et al.* ALT-803 transiently reduces simian immunodeficiency virus replication in the absence of antiretroviral treatment. *J Virol* 2018;92. doi:10.1128/JVI.01748-17. [Epub ahead of print: 01 Feb 2018].
- 100 Wrangle JM, Velcheti V, Patel MR, *et al.* ALT-803, an IL-15 superagonist, in combination with nivolumab in patients with metastatic non-small cell lung cancer: a non-randomised, open-label, phase 1B trial. *Lancet Oncol* 2018;19:694–704.
- 101 Felices M, Lenvik AJ, McElmurry R, *et al.* Continuous treatment with IL-15 exhausts human NK cells via a metabolic defect. *JCI Insight* 2018;3. doi:10.1172/jci.insight.96219. [Epub ahead of print: 08 Feb 2018].
- 102 Hanick NA, Rickert M, Varani L, *et al.* Elucidation of the interleukin-15 binding site on its alpha receptor by NMR. *Biochemistry* 2007;46:9453–61.
- 103 Kim PS, Kwilas AR, Xu W, *et al.* IL-15 superagonist/IL-15R α Sushi-Fc fusion complex (IL-15SA/IL-15R α Su-Fc; ALT-803) markedly enhances specific subpopulations of NK and memory CD8⁺ T cells, and mediates potent anti-tumor activity against murine breast and colon carcinomas. *Oncotarget* 2016;7:16130–45.
- 104 Chauvin J-M, Ka M, Pagliano O, *et al.* IL15 stimulation with TIGIT blockade reverses CD155-mediated NK-cell dysfunction in melanoma. *Clin Cancer Res* 2020;26:5520–33.
- 105 Delconte RB, Kolesnik TB, Dagley LF, *et al.* Cis is a potent checkpoint in NK cell-mediated tumor immunity. *Nat Immunol* 2016;17:816–24.
- 106 Zhang M, Ju W, Yao Z, *et al.* Augmented IL-15R α expression by CD40 activation is critical in synergistic CD8 T cell-mediated antitumor activity of anti-CD40 antibody with IL-15 in TRAMP-C2 tumors in mice. *J.i.* 2012;188:6156–64.
- 107 Van Audenaerde JR, Marcq E, von Scheidt B, *et al.* Novel combination immunotherapy for pancreatic cancer: potent anti-tumor effects with CD40 agonist and interleukin-15 treatment. *Clin Transl Immunology* 2020;9:e1165.
- 108 Tognarelli S, Wirsching S, von Metzler I, *et al.* Enhancing the activation and releasing the brakes: a double hit strategy to improve NK cell cytotoxicity against multiple myeloma. *Front Immunol* 2018;9:2743.

Supplementary Table 1. IL-15 ad IL15R α in human haematological malignancies

Tumor type	IL-15 / IL-15Rα alteration	Outcome	Reference
T cell Large Granular Lymphocyte Leukemia (LGL)	Increased Serum levels of IL15R α . Increased IL-15R α expression on PBNK- mb-IL-15 expression on LGL cells.	Leukemic cell expansion induce disease progression.	[34, 39]
Cutaneous T cell Lymphoma	Cutaneous and PB malignant CD4+ T-cells over express mRNA and protein of IL-15R α and IL-15 (autocrine loops).	Survival and growth of malignant CD4+ T-cells.	[40, 41]
HTLV-I Leukemia	Up-regulation of IL-15 and IL-15R α (autocrine loops).	Leukemia progression.	[41, 42]
Multiple Myeloma	Increased expression of IL-15R α and IL-15 production by malignant plasma cells.	Survival and growth of malignant plasma cells.	[43]

Supplementary Table 2. IL-15 and IL-15R α in human solid cancers

Tumor type	IL-15 / IL15R α alteration	Outcome	Beneficial effects	Reference
Head and Neck cancer	Increased serum levels of sIL-15. High intratumoral IL-15 concentrations.	Poor clinical outcome.		[37, 44]
Lung Cancer	High intratumoral IL-15 concentrations.	Poor clinical outcome.		[45]
Triple negative breast cancer	Cancer cells over express IL-15R α and IL-15 production. No IL-15R β/γ complex (autocrine loops).	Increased cell proliferation, migration and protection from apoptosis.	Better survival outcome associated to paracrine activation of infiltrating mononuclear cells.	[49]
Prostate cancer	Intratumoral IL-15 overexpression.		Decreased cell proliferation and vessel formation. Recurrence free survival.	[55, 56]
Colon Cancer	IHC on human biopsies and tumoral implantation in nude mice reveals IL-15 production by metastatic cells. Genomic profile reveals intratumoral IL-15 loss in 30% of metastatic patients.	CRC implantation in nude mice reveals hyperplasia in adjacent mucosa neo angiogenesis and tumor progression.	Loss of IL-15 in 30% of metastatic patients correlates with low T-cells density and proliferation high risk of relapse and decreased survival.	[57, 58, 59]
Renal clear cell carcinoma (RCC)	In vitro and in vivo loss of IL-15R γ Chain and JACK3. tmb-IL-15 expression on RCC cells. Renal cancer stem cell expression IL-15R $\alpha/\beta/\gamma$ receptor.	rhIL-15 and tmb-IL-15 induce EMT and matrigel cell invasion.	In vitro rhIL-15 induces stable CSC differentiation into non-tumorigenic polarized epithelial cells.	[51, 52, 53, 54]
Melanoma	IL-15 production by primary cell cultures.	Juxtacrine IL-15 loops induce tumor escape mechanisms and inflammatory signals.		[7, 37, 44, 46, 47]

Supplemental Material

Material and methods

ELISA assay

Quantification of sIL-15/IL-15R α complex in the plasma of HD and metastatic melanoma patients was performed by ELISA assay Human IL-15/IL-15R alpha Complex DuoSet ELISA DY6924 (R&D Systems) according to manufacturer's instructions.

Purification of NK cells

Freshly isolated NK cells were purified from peripheral blood mononuclear cells (PBMC) obtained from buffy coats using RosetteSep Human NK cell Enrichment Cocktail (Stemcell Technologies, Vancouver, Canada) according to manufacturer's instructions.

Purified NK cells were grown in RPMI-1640 medium (Euroclone) supplemented with 10% foetal bovine serum (FBS; Thermo-Fisher Scientific, Waltham, U.S.A.) and 600U/mL recombinant human IL-2 (rhIL-2 Proleukin; Novartis-Farma, Origgio, Italy).

Cytotoxicity assays

NK cytotoxicity activity was evaluated using as target cells K-562 (Human erythroleukemia cell line, ATCC, Manassas, VA, USA). K-562 cells were stained with 5 μ M Cell Tracker Green (CMFDA; Thermo-Fisher Scientific) and incubated with NK cells at 37°C at different Effector:Target (E:T) ratio. After 4 hours, propidium iodide (PI, Sigma-Aldrich) was added in a 1:200 ratio and cell viability was assessed by flow-cytometry (Cytoflex S Beckman-Coulter).

Dead target cells were identified as CMTDA+ PI+ and the percentage (%) of cell lysis was calculated as reported before ^[97].

Interleukin-15 and cancer. Some solved and many unsolved questions.

Fiore P.^{1§}, Di Matteo S.^{1§}, Tumino N.¹, Mariotti F.¹, Pietra G.^{2,3}, Ottonello S.^{4,5}, Negrini S.⁶, Bottazzi B.⁷, Moretta L.¹, Mortier E.^{8,9*} and Azzarone B.^{1*}

Supplemental References to Table 1.

Vincent M, Teppaz G, Lajoie L, Solé V, Bessard A, Maillason M, Loisel S, Béchard D, Clémenceau B, Thibault G, Garrigue-Antar L, Jacques Y, Quéméner A. Highly potent anti-CD20-RLI immunocytokine targeting established human B lymphoma in SCID mouse. *MAbs*. 2014 Jul-Aug;6(4):1026-37.

Vincent M, Bessard A, Cochonneau D, Teppaz G, Solé V, Maillason M, Birklé S, Garrigue-Antar L, Quéméner A, Jacques Y. Tumor targeting of the IL-15 superagonist RLI by an anti-GD2 antibody strongly enhances its antitumor potency. *Int J Cancer*. 2013 Aug 1;133(3):757-65.

Rhode PR, Egan JO, Xu W, Hong H, Webb GM, Chen X, Liu B, Zhu X, Wen J, You L, Kong L, Edwards AC, Han K, Shi S, Alter S, Sacha JB, Jeng EK, Cai W, Wong HC. Comparison of the Superagonist Complex, ALT-803, to IL15 as Cancer Immunotherapeutics in Animal Models. *Cancer Immunol Res*. 2016 Jan;4(1):49-60.

Rosario M, Liu B, Kong L, Collins LI, Schneider SE, Chen X, Han K, Jeng EK, Rhode PR, Leong JW, Schappe T, Jewell BA, Keppel CR, Shah K, Hess B, Romee R, Piwnica-Worms DR, Cashen AF, Bartlett NL, Wong HC, Fehniger TA. The IL-15-Based ALT-803 Complex Enhances FcγRIIIa-Triggered NK Cell Responses and In Vivo Clearance of B Cell Lymphomas. *Clin Cancer Res*. 2016 Feb 1;22(3):596-608.

Jochems C, Tritsch SR, Knudson KM, Gameiro SR, Rumfield CS, Pellom ST, Morillon YM, Newman R, Marcus W, Szeto C, Rabizadeh S, Wong HC, Soon-Shiong P, Schlom J. The multi-functionality of N-809, a novel fusion protein encompassing anti-PD-L1 and the IL-15 superagonist fusion complex. *Oncoimmunology*. 2018 Nov 27;8(2):e1532764.

Furuya H, Chan OTM, Pagano I, Zhu C, Kim N, Peres R, Hokutan K, Alter S, Rhode P, Rosser CJ. Effectiveness of two different dose administration regimens of an IL-15 superagonist complex (ALT-803) in an orthotopic bladder cancer mouse model. *J Transl Med*. 2019 Jan 17;17(1):29.

Liu B, Jones M, Kong L, Noel T, Jeng EK, Shi S, England CG, Alter S, Miller JS, Cai W, Rhode PR, Wong HC. Evaluation of the biological activities of the IL-15 superagonist complex, ALT-803, following intravenous versus subcutaneous administration in murine models. *Cytokine*. 2018 Jul;107:105-112.

Kim PS, Kwilas AR, Xu W, Alter S, Jeng EK, Wong HC, Schlom J, Hodge JW. IL-15 superagonist/IL-15RαSushi-Fc fusion complex (IL-15SA/IL-15RαSu-Fc; ALT-803) markedly enhances specific subpopulations of NK and memory CD8+ T cells, and mediates potent anti-tumor activity against murine breast and colon carcinomas. *Oncotarget*. 2016 Mar 29;7(13):16130-45.

Mathios D, Park CK, Marcus WD, Alter S, Rhode PR, Jeng EK, Wong HC, Pardoll DM, Lim M. Therapeutic administration of IL-15 superagonist complex ALT-803 leads to long-term survival and durable antitumor immune response in a murine glioblastoma model. *Int J Cancer*. 2016 Jan 1;138(1):187-94.

Xu W, Jones M, Liu B, Zhu X, Johnson CB, Edwards AC, Kong L, Jeng EK, Han K, Marcus WD, Rubinstein MP, Rhode PR, Wong HC. Efficacy and mechanism-of-action of a novel superagonist interleukin-15: interleukin-15 receptor αSu/Fc fusion complex in syngeneic murine models of multiple myeloma. *Cancer Res*. 2013 May 15;73(10):3075-86.

Rosario M, Liu B, Kong L, Collins LI, Schneider SE, Chen X, Han K, Jeng EK, Rhode PR, Leong JW, Schappe T, Jewell BA, Keppel CR, Shah K, Hess B, Romee R, Piwnica-Worms DR, Cashen AF, Bartlett NL, Wong HC, Fehniger TA. The IL-15-Based ALT-803 Complex Enhances FcγRIIIa-Triggered NK Cell Responses and In Vivo Clearance of B Cell Lymphomas. *Clin Cancer Res*. 2016 Feb 1;22(3):596-608.

Moga E, Cantó E, Vidal S, Juarez C, Sierra J, Briones J. Interleukin-15 enhances rituximab-dependent cytotoxicity against chronic lymphocytic leukemia cells and overcomes transforming growth factor beta-mediated immunosuppression. *Exp Hematol*. 2011 Nov;39(11):1064-71.

Liu B, Kong L, Han K, Hong H, Marcus WD, Chen X, Jeng EK, Alter S, Zhu X, Rubinstein MP, Shi S, Rhode PR, Cai W, Wong HC. A Novel Fusion of ALT-803 (Interleukin (IL)-15 Superagonist) with an Antibody Demonstrates Antigen-specific Antitumor Responses. *J Biol Chem*. 2016 Nov 11;291(46):23869-23881.

Zhang M, Wen B, Anton OM, Yao Z, Dubois S, Ju W, Sato N, DiLillo DJ, Bamford RN, Ravetch JV, Waldmann TA. IL-15 enhanced antibody-dependent cellular cytotoxicity mediated by NK cells and macrophages. *Proc Natl Acad Sci U S A*. 2018 Nov 13;115(46):E10915-E10924.

Dubois S, Patel HJ, Zhang M, Waldmann TA, Müller JR. Preassociation of IL-15 with IL-15R alpha-IgG1-Fc enhances its activity on proliferation of NK and CD8+/CD44high T cells and its antitumor action. *J Immunol*. 2008 Feb 15;180(4):2099-106.

Zhang M, Ju W, Yao Z, Yu P, Wei BR, Simpson RM, Waitz R, Fassò M, Allison JP, Waldmann TA. Augmented IL-15Rα expression by CD40 activation is critical in synergistic CD8 T cell-mediated antitumor activity of anti-CD40 antibody with IL-15 in TRAMP-C2 tumors in mice. *J Immunol*. 2012 Jun 15;188(12):6156-64.

Yu P, Steel JC, Zhang M, Morris JC, Waitz R, Fassò M, Allison JP, Waldmann TA. Simultaneous inhibition of two regulatory T-cell subsets enhanced Interleukin-15 efficacy in a prostate tumor model. *Proc Natl Acad Sci U S A*. 2012 Apr 17;109(16):6187-92.

Zhao M, Luo M, Xie Y, Jiang H, Cagliero C, Li N, Ye H, Wu M, Hao S, Sun T, Yang H, Zhang M, Lin T, Lu H, Zhu J. Development of a recombinant human IL-15-sIL-15Rα/Fc superagonist with improved half-life and its antitumor activity alone or in combination with PD-1 blockade in mouse model. *Biomed Pharmacother*. 2019 Apr;112:108677.

Knudson KM, Hicks KC, Alter S, Schlom J, Gameiro SR. Mechanisms involved in IL-15 superagonist enhancement of anti-PD-L1 therapy. *J Immunother Cancer*. 2019 Mar 21;7(1):82.

Knudson KM, Hicks KC, Ozawa Y, Schlom J, Gameiro SR. Functional and mechanistic advantage of the use of a bifunctional anti-PD-L1/IL-15 superagonist. *J Immunother Cancer*. 2020 Apr;8(1):e000493.