



HAL
open science

Polyploidy in liver development, homeostasis and disease

Romain Donne, Maëva Saroul-Aïnama, Pierre Cordier, Séverine
Celton-Morizur, Chantal Desdouets

► To cite this version:

Romain Donne, Maëva Saroul-Aïnama, Pierre Cordier, Séverine Celton-Morizur, Chantal Desdouets. Polyploidy in liver development, homeostasis and disease. *Nature reviews. Gastroenterology & hepatology*, 2020, 17 (7), pp.391-405. 10.1038/s41575-020-0284-x . inserm-02992166

HAL Id: inserm-02992166

<https://inserm.hal.science/inserm-02992166>

Submitted on 6 Nov 2020

HAL is a multi-disciplinary open access archive for the deposit and dissemination of scientific research documents, whether they are published or not. The documents may come from teaching and research institutions in France or abroad, or from public or private research centers.

L'archive ouverte pluridisciplinaire **HAL**, est destinée au dépôt et à la diffusion de documents scientifiques de niveau recherche, publiés ou non, émanant des établissements d'enseignement et de recherche français ou étrangers, des laboratoires publics ou privés.

1
2
3
4
5
6
7
8
9
10
11
12
13
14
15
16
17
18
19
20
21
22

Polyploidy in liver development, homeostasis and disease

Romain Donne^{1*}, Maëva Saroul-Aïnama^{1*}, Pierre Cordier^{1*}, Séverine Celton-Morizur¹ and Chantal Desdouets^{**1}

1- Team Proliferation, Stress and Liver Physiopathology, Centre de Recherche des Cordeliers, INSERM, Sorbonne Université, USPC, Université de Paris, Paris, France.

* Equal contribution

**e-mail: chantal.desdouets@inserm.fr, ORCID number : 0000-0002-1955-8915

1 **Abstract** | Polyploidy (or whole-genome duplication) is the condition of having more than
2 two basic sets of chromosomes. Polyploidization is well tolerated in many species and can
3 lead to specific biological functions. In mammals, programmed polyploidization takes place
4 during development in certain tissues such as the heart and placenta and is considered to be a
5 feature of differentiation. However, unscheduled polyploidization can cause genomic
6 instability and has been observed in pathological conditions, such as cancer. Polyploidy of the
7 liver parenchyma was first described more than 100 years ago. It's one of the few mammalian
8 organs that display changes in polyploidy during homeostasis, regeneration and in response to
9 damage. In the human liver, around 30% of hepatocytes are polyploid. The polyploidy of
10 hepatocytes results from both nuclear polyploidy (an increase in the amount of DNA per
11 nucleus) and cellular polyploidy (an increase in the number of nuclei per cell). In this Review,
12 we discuss the regulation of polyploidy in liver development and pathophysiology. We also
13 provide an overview of current knowledge about the mechanisms of hepatocyte
14 polyploidization, its biological importance and the fate of polyploid hepatocytes during liver
15 tumorigenesis.

16

17 **Author contributions**

18 R.D., M.S.-A. and P.C. wrote the article and researched data for the article. S.C.-M. wrote the article and made a substantial contribution to the discussion of content. C.D. wrote the
19 article, researched data for the article, made a substantial contribution to the discussion of content, and reviewed/edited the manuscript before submission.

20 **Competing interests**

21 The authors declare no competing interests.

22 **Publisher's note**

23 Springer Nature remains neutral with regard to jurisdictional claims in published maps and institutional affiliations.

24 **Peer review information**

25 *Nature Reviews XXX* thanks [Referee#1 name], [Referee#2 name] and the other, anonymous, reviewer(s) for their contribution to the peer review of this work. [Au: inserted this as a
26 placeholder for now]

27

Key points

- 1
- 2
- 3 • Polyploidy, a condition in which cells contain more than two sets of homologous
- 4 chromosomes, is a well-known feature of mammalian hepatocytes.
- 5 • Polyploidy is defined on the basis of the DNA content of each nucleus (nuclear ploidy;
- 6 for example, $2n$, $4n$ or $8n$) and the number of nuclei per cell (cellular ploidy).
- 7 • The adult liver contains a heterogeneous mixture of diploid and polyploid hepatocytes.
- 8 • The liver is one of the few mammalian organs that display changes in ploidy during
- 9 normal homeostasis, regeneration and in response to damage.
- 10 • Polyploid state could provide protection from tumorigenesis by providing extra copies
- 11 of tumour suppressor copies.
- 12 • Amplification of nuclear ploidy within liver tumours is associated with a poor
- 13 prognosis.
- 14

1 •

2 **Introduction**

3

4 The chromosome houses the genetic information specific to all living beings. Each species
5 has a specific number, n , of chromosomes in its haploid genome. Thus, *Homo sapiens*
6 cells have $n=23$ chromosomes and *Mus musculus* cells have $n=20$ chromosomes in their
7 haploid genome ¹. Eukaryotic organisms typically have two complete sets of homologous
8 chromosomes. However, the number of a set of chromosomes can differ between cells or
9 species. Cells with only one copy of each chromosome (n) are described as haploid, those
10 with two copies are diploid ($2n$), three copies are triploid ($3n$), four copies are tetraploid ($4n$),
11 and so on (FIG. 1A). The presence of more than two complete sets of chromosomes is known
12 as polyploidy or whole-genome duplication ². The polyploid state should not be confused with
13 aneuploidy, in which the copy number of whole chromosomes or chromosome segments is
14 modified, either by a gain or a loss ³. In polyploid species, the additional chromosome sets
15 can have different origins. Allopolyploidy arises through the fusion of two or more cells with
16 distantly related genomes (that is, from different species). Autopolyploidy arises through the
17 duplication of a single genome or the fusion of closely related genomes (that is, from the
18 same species). Finally, the number of chromosome sets can be amplified within a single
19 nucleus (mononucleate polyploid populations), defining the nuclear ploidy, or, as in some
20 polyploid cells, the genetic material can be distributed between two or more nuclei, defining
21 the cellular ploidy (FIG. 1B).

22 Polyploidy is not rare in eukaryotes, and is now considered a common mode of speciation,
23 with consequences for evolution and biodiversity ⁴⁻⁷. Indeed, polyploidy is a feature of plant
24 genomes, contributing to variations in both genome size and gene content ⁸⁻¹⁰. Polyploidy has
25 been observed in most plant groups, but it is most frequent in angiosperms ¹¹⁻¹³. It has also
26 been reported in some insects, fishes, amphibians and reptiles ^{7, 14}. In mammals, whole-

1 organism polyploidization is rare, as it typically leads to embryonic resorption or spontaneous
2 abortion ¹⁵⁻¹⁷. However, the red viscacha rat (*Tympanoctomys barrerae*) and its close
3 relatives, which are fully tetraploid, are the exception to the rule ¹⁸. The emergence of
4 polyploid cells in mammals can be associated with the development and differentiation of
5 certain tissues. For instance, polyploid cells are present in the heart (cardiomyocytes: $4n$),
6 placenta (trophoblast giant cells: $8n$ to $64n$), bone marrow (megakaryocytes: $16n$ to $128n$),
7 pancreas (acinar cells: $4n$) ^{19,20} and liver (hepatocytes: $4n$ to $8n$) ²¹⁻²³. Over the past decade,
8 several breakthroughs have occurred in determining the role of polyploidy in regulating organ
9 size, tissue regeneration and repair ^{24, 25}. In *Drosophila melanogaster* and some vertebrate
10 tissues, polyploidy provides an alternative means of compensating for cell loss, particularly in
11 post-mitotic tissues that lack stem cells ²⁵. For example, polyploidy has a crucial role in heart
12 and kidney regeneration and repair processes in mammals ²⁵⁻²⁸. One major concern is the
13 association of an accumulation of polyploid contingents with many age-related diseases,
14 including arterial hypertension, hyperthyroidism, metabolic disorders and cancer ²⁹⁻³³.
15 Proliferating polyploid cells have been shown to be genetically unstable, thereby potentially
16 facilitating tumour development ^{21,34}. In addition, there is growing evidence to suggest that
17 polyploid intermediates play a key part in shaping the composition of cancer genomes: most
18 solid tumours have polyploid or near-polyploid karyotypes ^{35,36}.
19 Thus, several key questions arise. Does polyploidy confer selective benefits and a protective
20 role in evolution, or does it generate a key contingent of cells that underlie tumorigenesis?
21 This Review focuses on the duality of the polyploid state, and on the mechanisms leading to
22 it. In this Review, we will first introduce the different mechanisms leading to polyploidy.
23 Next, we will examine how polyploid hepatocytes are generated during physiological and
24 pathological situations. Finally, we will discuss the effects of polyploidy on liver function.

25

[H1] Mechanisms leading to polyploidy

How does a diploid cell become polyploid? In a physiological or pathological context, various mechanisms can promote the genesis of polyploid cells: endoreplication, cytokinesis failure and cell fusion, which is not dependent on the cell cycle and division (FIG. 2).

[H2] Cell fusion

Fusion can occur between cells of the same type (homotypic) or cells of different origins (heterotypic) (FIG. 2A). Cells that fuse without nuclear fusion are described as syncytia. The major cell fusion event that modifies ploidy is fertilization (an example of heterotypic cell fusion)³⁷. Cell fusion is also a key process in tissue development and homeostasis. For example, myoblasts fuse to form myotubes in muscle, macrophages fuse to form osteoclasts in bone, and cytotrophoblasts fuse to form placental syncytiotrophoblasts³⁸⁻⁴⁰. Cell fusion mechanisms have been analysed in detail in several experimental models, in particular in myoblast differentiation⁴¹. Cell fusion requires cell–cell adhesion via the repulsive charges of the two cells' membranes, followed by destabilization of the opposing lipid bilayers, leading to fusion, pore formation and expansion. Myoblasts use actin-propelled membrane protrusions to promote fusogenic protein engagement and fusion pore formation⁴². Cell fusion also has a key role in wound healing and tissue regeneration. In injured tissues, bone marrow-derived cells can fuse to differentiated cells to form hybrids with regenerative potential⁴³. Such heterotypic cell fusion has been observed in various human and mice organs, including the muscle, brain, retina, intestine and liver, and it has been shown to participate in the re-establishment of tissue function⁴⁴⁻⁴⁸.

Viral infections can also have an important role in the formation of polyploid cells⁴⁹. The best-documented example is that of human papillomavirus (HPV), the major aetiological agent of cervical cancer⁵⁰. The expression of the viral HPV-16 E5 oncoprotein at the surface of infected cervical epithelial cells is sufficient for the formation of tetraploid binucleate cells

1 ^{51,52}. Tetraploid cervical cells are observed in premalignant lesions of human cervical cancer
2 and it has been established as a prognostic factor that allows estimating the relative
3 progression risk into more advanced lesion ⁵³. Interestingly, women diagnosed as low-grade
4 squamous intraepithelial lesion/HPV-positive exhibit elevated levels of tetraploid cervical
5 cells compared with normal/HPV-negative women, indicating that formation of tetraploid
6 cells is obviously associated with HPV infection ⁵⁴.

7 **[H2] Endoreplication**

8 The canonical cell cycle of mammals has four successive phases: G1, S, G2 and M (FIG. 2B).
9 This process is governed by the cyclin-dependent kinases (CDKs), a family of serine–
10 threonine protein kinases. CDK activity is dependent on association with non-catalytic
11 regulatory subunits called cyclins. CDK–cyclin complexes phosphorylate specific substrates
12 to induce DNA replication (which is driven by the CDK responsible for S phase entry, S-
13 CDK) and mitosis (which is driven by the CDK responsible for M phase entry, M-CDK), the
14 two major events of the cell division cycle ⁵⁵. In mammals, the S and M phases are controlled
15 by CDK2 associated with cyclins E and A, and by CDK1 associated with cyclins B and A,
16 respectively. These two steps are coupled, such that mitosis phase cannot begin until S phase
17 has been completed. Endoreplication is an alternative cell cycle in which cells successively
18 replicate their genomes in the absence of cell division ⁵⁶⁻⁵⁹. This process leads to the genesis
19 of mononucleate polyploid progenies. There are two variants of the endoreplication process:
20 endocycles and endomitosis (FIG. 2C). During endocycles, cells alternate between G and S
21 phases, whereas, during endomitosis, cells abort mitosis by skipping metaphase, anaphase or
22 cytokinesis ⁶⁰. Several elegant reviews have highlighted the mechanisms that regulate
23 endocycles in different species and cell types ^{25, 57, 61}. The key event that triggers endocycles
24 is the inhibition of entry into mitosis. This inhibition might be mediated by the proteolysis of
25 mitotic cyclins under the control of an E3 ubiquitin ligase, the APC/C (anaphase-promoting

1 complex; also known as the cyclosome). M-CDK can also be inhibited by interactions with
2 cyclin kinase inhibitors (CKIs). A second crucial event is the oscillation of S-CDK activity
3 between low and high levels in the G and S phases, respectively, which is essential for
4 genome reduplication in the absence of cell division. One of the best-characterized examples
5 of an endocycle in mammals is observed in the trophoblast giant cells. Trophoblast giant cell
6 polyploidization is crucial for implantation and for the modulation of post-implantation
7 placentation ⁶². In particular, the accumulation of the CKIs p57 and p21 is essential for
8 endocycle induction, as it enhances cyclin B degradation and inhibits CDK1 activity ^{63, 64}.
9 Also, E2F transcription factors are required for the regulation of trophoblast giant cell
10 polyploidization ^{65, 66}. This point is discussed in more detail later.

11 The observation in different experimental models of a connection between genome instability
12 and endoreplication cycles is a major source of concern ^{57, 67}. For instance, double-strand
13 break induction is common in the leaves of *Arabidopsis thaliana* plants subjected to UV
14 irradiation. Induction of the DNA damage response results in G2–M arrest. If the DNA
15 damage response persists, endoreplication is triggered ^{68, 69}. In this context, it has been
16 suggested that endoreplication is a strategy used by the plant to sustain growth under
17 genotoxic stress. In human and mouse cell lines, that have high amounts of dysfunctional
18 telomeres, endoreplication is induced by p53/pRb ^{70, 71}. This endoreplication requires
19 persistent serine-protein kinase ATM and/or ATR (ATM and RAD3-related)-dependent
20 signalling, which is induced by irreparably damaged telomeres. Prolonged cell cycle arrest in
21 G2 leads to mitosis being bypassed, which results in the genesis of mononucleate tetraploid
22 progenies ^{70, 71}.

23 Endomitosis has been linked to problems in metaphase–anaphase transition. Thus, cancer
24 cells treated with antimetabolic drugs that target microtubule dynamics (for example, taxanes,
25 vinca alkaloids and epothilones) are blocked in metaphase owing to spindle assembly

1 checkpoint (SAC) activation ⁷². The SAC prevents passage through anaphase until all
2 chromosomes are properly attached to kinetochores ⁷³. Sustained SAC activation results in
3 either cell death through a phenomenon called mitotic catastrophe (leading to cancer
4 remission), or mitosis exit in metaphase, also known as mitotic slippage, driving cancer
5 progression ⁷⁴⁻⁷⁶. The outcome is dictated by the balance between the opposing activities of
6 the apoptotic machinery and two mitotic ubiquitin ligases. Slippage is thought to involve the
7 gradual proteolysis of cyclin B1 by the APC/C and CRL2^{ZYG11A/B} ubiquitin ligases ⁷⁷⁻⁷⁹. How
8 cancer cells treated with spindle poisons (e.g. taxol) avoid apoptosis during mitosis remains
9 unclear. It has been suggested that polyploidy might confer a survival advantage on tumour
10 cells, contributing to the evolution of treatment resistance ⁸⁰. Mitotic slippage events have
11 also been described during colorectal cancer cell divisions in tumours with *adenomatous*
12 *polyposis coli* (*APC*) gene mutations ⁸¹. *APC* mutations are the most frequent type of mutation
13 in human colorectal tumours ⁸². *APC* is involved in the WNT signalling pathway, but it also
14 binds to mitotic spindle microtubules, and its absence impairs kinetochore–microtubule
15 interactions, leading to chromosomal instability (CIN) in *APC*-driven murine colon
16 carcinomas ⁸³. Dikovskaya and co-workers have demonstrated that conditional knockout of
17 *APC in vitro* and *in vivo* induces mitotic slippage that is linked to the genesis of a
18 mononucleate tetraploid cell contingent ⁸¹. However, the link between tetraploid cells with
19 *APC* mutations and the increase in CIN in colon carcinogenesis remains unclear.

20 **[H2] Cytokinesis failure**

21 Cytokinesis is the final step in cell division and is initiated during anaphase ⁸⁴. It involves a
22 finely regulated series of events to ensure that genomic and cytoplasmic materials are evenly
23 distributed between the two nascent daughter cells. Four events must occur for the correct
24 induction of cytokinesis: establishment of the division plane, contraction of the actomyosin
25 ring, ingression of the cleavage furrow and, finally, formation of the intracellular bridge, the

1 degradation of which leads to cell abscission. Interference with the progression of these steps
2 can lead to cytokinesis failure and to the genesis of binucleate polyploid cells (FIG. 2C)^{85, 86}.
3 Cytokinesis failure has been known for several decades to be a physiological process involved
4 in the development of certain human tissues and organs, such as the heart⁸⁷, bone marrow⁸⁸
5 and liver⁸⁹. For example, ventricular cardiomyocytes respond to the increase in blood flow
6 after birth with an adaptive increase in volume (known as hypertrophy)⁹⁰. This transition from
7 hyperplasia to hypertrophy is clearly associated with polyploidization as it leads to the genesis
8 of binucleate tetraploid cardiomyocytes⁹¹. The degree of polyploidization in ventricular
9 cardiomyocytes differs between species and varies with age, but it might reach 85% in
10 rodents and 30% in humans^{91, 92, 93, 94}. Cyclin G1 has been identified as an important player
11 in the molecular machinery that controls cardiomyocyte binucleation. The expression of
12 cyclin G1 in neonatal cardiomyocytes promotes G1–S cell cycle transition but inhibits
13 cytokinesis⁹⁵. Cytokinesis failure in cardiomyocytes might also be caused by the abnormal
14 localization of proteins that regulate the organization of the contractile ring (for example, Ras
15 homolog gene family member A (RhoA), ROCK-I, ROCK-II and anillin)^{87, 96, 97}.
16 Cytokinesis failure has also been reported in a number of diseases, often in association with
17 high rates of mutation or genomic instability⁹⁸⁻¹⁰⁰. In their elegant review, Lacroix and
18 Maddox describe several examples of cytokinesis failure events in different diseases:
19 Wiskott–Aldrich syndrome, X-linked neutropenia, Fanconi anaemia, Lowe syndrome, type II
20 neurofibromatosis and age-related macular degeneration¹⁰¹. Interestingly, bulk chromatin, or
21 even a single lagging chromosome trapped in the cleavage furrow, can induce cytokinesis
22 failure and tetraploidization in human cells^{102, 103}. Cytokinesis defects have also been
23 reported in many different types of cancer cells (e.g. breast, colon and ovarian), as a result for
24 example of dysfunctions of various proteins that control the cytokinesis process (aurora A,
25 mitotic arrest-deficient 2 (MAD2) and large tumour suppressor 1 (LATS1))²¹.

1
2
3
4
5
6
7
8
9
10
11
12
13
14
15
16
17
18
19
20
21
22
23
24
25
26
27

[H1] Polyploidy in the liver

The liver is a vital organ with an extraordinary range of physiological functions, including the metabolism of carbohydrates, lipids and amino acids, detoxification of xenobiotic compounds, synthesis of serum proteins, and bile production and secretion. These functions are performed primarily by hepatocytes, which account for 70% of the cells of the human liver¹⁰⁴. Interestingly, the metabolic functions of hepatocytes are specific to their position along the portocentral axis, making it possible to distinguish between ‘periportal’ hepatocytes (which are involved in gluconeogenesis, ureagenesis, β -oxidation of fatty acids, amino acid breakdown and cholesterol biosynthesis) and ‘pericentral’ hepatocytes (which are involved in glycolysis, *de novo* lipogenesis and alcohol detoxification)¹⁰⁵⁻¹⁰⁹. Another source of hepatocyte heterogeneity is differences in ploidy. At birth, all hepatocytes are diploid, with a single nucleus containing two copies of each chromosome^{110, 111}. During postnatal growth, the liver parenchyma undergoes cellular changes characterized by gradual polyploidization, leading to the emergence of hepatocytes of several different ploidy classes (FIG. 3)^{110, 111}. Hepatocyte ploidy depends on the DNA content of each nucleus (nuclear ploidy: diploid, tetraploid, octoploid, and so on) and on the number of nuclei per hepatocyte (cellular ploidy: mononucleate, binucleate)^{110, 111}. For example, polyploid hepatocytes can be tetraploid (either binucleate with two diploid ($2n$) nuclei or mononucleate with a single tetraploid ($4n$) nucleus) or octoploid (either binucleate with two tetraploid ($4n$) nuclei or mononucleate with a single octoploid ($8n$) nucleus). The liver has long been known to display polyploidy, and various studies have determined the proportions of polyploid hepatocytes in the liver parenchyma of different species¹¹²⁻¹¹⁶. For example, up to 90% of adult hepatocytes are polyploid in rodents^{89, 117-119}, versus approximately 30% in humans¹²⁰⁻¹²⁴. An increase in cell size is the most obvious and consistent consequence of an increase in ploidy. Several studies have shown that a doubling of chromosome number approximately doubles the size of hepatocytes in humans

1 and mice parenchyma¹²⁵⁻¹²⁸. There is no substantial difference in the volume of a given state
2 of ploidy, for example, between a tetraploid contingent of diploid binucleate cells ($2 \times 2n$) and
3 a tetraploid contingent of tetraploid mononucleate cells with a single tetraploid ($4n$) nucleus
4^{127, 129}. Intriguingly, when the volume of the cell increases twofold during polyploidization,
5 the surface area of cellular structures increases only 1.4-fold (e.g. yeast and mammalian cells)
6⁹⁹. In addition, as has already been demonstrated in *Arabidopsis thaliana*¹³⁰, changes in the
7 proportions of cellular elements upon polyploidization, as chromosome movement, might
8 influence nuclear structure.

9

10 **[H1] Polyploidy in liver development**

11

12 Polyploidization during development has been analysed almost exclusively in rodent models.

13 All hepatocytes in the newborn rodent liver are diploid and have high rates of proliferation¹³¹.

14 However, cell division gradually declines in rodents, such that, by six weeks of age, DNA

15 synthesis is detected in only a few hepatocytes, at rates similar to those reported for normal

16 adult liver^{89, 132}. Various *in vivo* studies have shown that polyploidization begins in the first

17 few weeks after birth with the genesis of binucleate tetraploid hepatocytes ($2 \times 2n$)^{89, 119, 133-135}.

18 During this period, diploid hepatocytes ($2n$) follow either a normal cell cycle or an adapted

19 cell cycle with karyokinesis but no cytokinesis (cytokinesis failure; FIG. 3). Proliferating

20 binucleate tetraploid hepatocytes can then repeat DNA replication, leading either to

21 cytokinesis, which generates two mononucleate tetraploid hepatocytes ($4n$), or to another

22 failure of cytokinesis, which generates a binucleate octoploid hepatocyte ($2 \times 4n$) (FIG. 3)⁸⁹.

23 This situation results in the establishment of physiological polyploidy. Margall-Ducos et al.

24 showed that the canonical cytokinesis programme is disrupted owing to the absence of

25 actinomyosin ring formation¹³⁴. Indeed, the organization of the actin cytoskeleton during the

26 anaphase–telophase transition is impaired in these conditions. The microtubules fail to contact

1 the cortex, and the molecular signals essential for cleavage plane specification (for example,
2 aurora B and polo-like kinase 1 (PLK1)) are therefore not correctly delivered. Consequently,
3 active RhoA, the principal orchestrator of cytokinesis, does not concentrate at the division
4 site, and the contractile ring is not formed¹³⁴. During postnatal growth, cytokinesis failure
5 events occur around the time of weaning¹³⁴ a period associated with profound changes in
6 feeding behaviour, hormone concentrations and metabolic pathways¹³⁶. Indeed, insulin has
7 been identified as a key factor in the genesis of binucleate tetraploid hepatocytes^{137, 138}. In
8 rodent, impairment of insulin signalling greatly decreases the formation of binucleate
9 progenies, whereas repeated insulin injections promote the generation of polyploid liver cells.
10 The phosphoinositide 3-kinase (PI3K)–AKT pathway appears to be the principal downstream
11 pathway that mediates the cellular effects of insulin in these conditions. Various studies have
12 revealed that PI3K–AKT regulates actin cytoskeleton polarization and reorganization during
13 processes such as cell migration and invasion¹³⁹. The inhibition of AKT activity in dividing
14 hepatocytes induces the correct reorganization of actin during mitosis and the correct
15 localization of RhoA to the site of division, which is essential for successful cytokinesis^{137,}
16¹³⁸. Other factors have also been shown to control binucleation during liver development. E2F
17 transcription factors, which are master regulators of cell cycle progression¹⁴⁰, are also
18 essential. This family includes activators (E2F1, E2F2 and E2F3), repressors (E2F4, E2F5
19 and E2F6) and two atypical repressors (E2F7 and E2F8). In the mouse liver, E2F1–E2F6
20 levels are low throughout life, whereas E2F7 and E2F8 levels are high during the first seven
21 weeks after birth, a period that coincides with liver polyploidization¹¹⁹. *E2f7 and E2f8-*
22 *knockout mouse livers were highly enriched with diploid hepatocytes (60-70% of hepatocytes*
23 *in KO versus 3-4% in control livers)*^{65, 119, 141}. A substantial portion of the deregulated
24 transcripts identified in *E2f7 and E2f8-knockout mouse livers were involved in cytokinesis*
25 *(Ect2, Mklp1, Racgap1)*. Interestingly, during hepatocyte binucleation, Ect2, Mklp1 and

1 Racgap are impaired in relaying information from the spindle to the cortex, thereby
2 preventing the formation of a functional contractile actomyosin ring and thus cytokinesis¹³⁴.
3 E2F transcription factors have already been identified as key factors in the polyploidization
4 process in *A. thaliana* and *D. melanogaster*¹⁴²⁻¹⁴⁴. A similar phenomenon has been described
5 for trophoblast giant cells⁶⁵ and endometrial stromal cells¹⁴⁵ in mice. Interestingly,
6 microRNAs (miRNAs) are also drivers of physiological binucleation¹³³. Mouse liver
7 miRNAs are expressed in an age-dependent manner, and a subset of these molecules, miR-
8 122 in particular, is differentially expressed during postnatal development. *Mir122* knockout
9 livers displayed 60%-70% reduction in the number of polyploid hepatocytes, this defect being
10 rescued by miR-122 overexpression¹³³. During liver development, miR-122 directly
11 antagonizes pro-cytokinesis targets, thereby regulating hepatocyte binucleation¹³³. Finally,
12 the silencing of cell cycle regulator genes, such as *Cdk1*¹⁴⁶, *Trp53*^{147, 148}, *Cdkn1a*^{148, 149},
13 *cMyc*¹⁵⁰, *Ccne*¹⁵¹, *Birc5* (which encodes survivin)¹⁵², *Ssu72*¹⁵³, *Stk3* (also known as *Mst1/2*)
14¹⁵⁴, *Tgfb1*¹⁵⁵ and *Rbl*^{148, 156}, has been shown to modify cellular or nuclear liver
15 polyploidization in various mouse models. However, the roles of these diverse genes in
16 controlling the cell cycle and division during liver development in relation to binucleation are
17 unknown. Together, these studies highlight the essential contribution of cytokinesis failure to
18 physiological liver polyploidization. Future studies should investigate how the combined
19 activities of AKT, mTORC2, E2F7, E2F8 and miR-122 lead to inhibition of the cytokinesis
20 machinery and the expansion of binucleate hepatocytes during liver development.

21

22 **[H1] Polyploidy during regeneration after tissues injuries**

23

24 The liver is continually exposed to tissue injuries and stresses throughout life. In the adult
25 human liver parenchyma, hepatocytes are slowly replaced, with each cell having a mean
26 lifespan of approximately 200–300 days¹⁵⁷, but they retain the ability to proliferate rapidly in

1 response to aggression. The induction of liver regeneration by partial hepatectomy is a model
2 of compensatory hypertrophy, and several studies have revealed changes in ploidy profile
3 during this process. All hepatocytes enter the cell cycle after partial hepatectomy. By the end
4 of the regenerative process, cellular ploidy (binucleate polyploid hepatocytes) decreases, and
5 nuclear ploidy (mononucleate polyploid populations) increases (FIG. 4)¹⁵⁸⁻¹⁶². Interestingly,
6 Wilkinson et al. demonstrated that the global ploidy spectrum remained unchanged after
7 complete liver regeneration in the partial hepatectomy mouse model¹⁴¹, which suggests that
8 the decrease in cellular ploidy is compensated for by the increase in nuclear ploidy. Miyaoka
9 et al. have used cell lineage approaches and a high-throughput imaging system to investigate
10 the mechanisms controlling polyploidization during mouse liver regeneration²⁸. They found
11 that, although all hepatocytes entered into the cell cycle after partial hepatectomy, progressed
12 into S phase, only about half continue through mitosis suggesting that some hepatocytes
13 undergo endoreplication (amplification of nuclear ploidy). Importantly, hepatocytes that will
14 go into mitosis undergo cell division (genesis of mononucleate progenies). Thus, by contrast
15 to liver development, during liver regeneration, there is a shift from cellular polyploidy
16 (polyploid hepatocytes, predominantly binucleate) to nuclear polyploidy (polyploid
17 hepatocytes, predominantly mononucleate) (FIG. 4). Pathological conditions, such as hepatic
18 metabolic overload (of iron or copper)¹⁶³⁻¹⁶⁵, telomere attrition¹⁶⁶ and chronic viral infection
19 (hepatitis B and C virus)^{123, 124, 167}, also promote liver polyploidization, by as yet
20 uncharacterized mechanisms (FIG. 4). Polyploidy spectrum has been also characterized in
21 nonalcoholic fatty liver disease (NAFLD) (FIG. 4)^{31, 168}. In mice models of NAFLD, there
22 was an enrichment of highly polyploid mononucleate hepatocytes in the fatty liver
23 parenchyma. The same phenotype was observed in patients with nonalcoholic steatohepatitis.
24 The key question is, how are these cells generated? The cell cycles of normal hepatocytes
25 were compared with fatty hepatocytes in mouse primary cultures. Fatty hepatocytes

1 progressed through G1 phase and entered S phase, but their progression through the S and G2
2 phases was delayed relative to control cells. This delay was associated with the activation of a
3 G2–M ‘DNA damage signal’ (ATR-p53-p21 pathway) that precludes the activation of the
4 mitotic kinase (CDK1–cyclin B) and leads to endoreplication^{31, 168}. This work led to the
5 identification of oxidative stress as a key driver of pathological polyploidization in the livers
6 of patients with NAFLD. These findings provided the first demonstration of the generation,
7 by endoreplication, of pathological polyploid hepatocytes in a damaged liver, through
8 activation of a DNA damage-signalling axis. It is tempting to speculate that endoreplication is
9 a favoured mode of liver tissue repair, but further studies are needed to determine how various
10 genotoxic stresses and cell cycle regulators act together to promote endoreplication, and also
11 the fate of the polyploid hepatocytes generated in such conditions. Emerging data from
12 multiple experimental models have suggested a conserved role for endoreplication as an
13 alternative means of proliferation in a context of genome instability^{57, 67}.

14

15 **[H1] Effects of polyploidy on liver function**

16

17 Is hepatocyte polyploidization merely a manifestation of the physiological growth or
18 aggression of liver tissue, or do polyploid cells have functions that are physiologically
19 relevant? The biological importance of liver polyploidization remains unclear, but various
20 hypotheses have been proposed, some of which have already been partially validated.

21 ***[H2] Polyploidization stage and terminal differentiation***

22 Pioneering studies in rodent and human have shown liver polyploidy to be related to terminal
23 differentiation and senescence^{122, 131, 160, 161, 169-171}. As a result, many studies have tried to
24 determine whether a polyploid hepatocyte can still divide in response to different proliferation
25 stimuli. Surprisingly, several groups argued that polyploid hepatocytes seem not to be
26 engaged in senescence but by contrast maintained a high rate of proliferation. For instance,

1 polyploid hepatocytes have been shown to divide as much as the diploid contingent after
2 partial hepatectomy^{28, 172}. The livers of *E2f8*^{-/-} mice, which consist predominantly of diploid
3 hepatocytes, have a regenerative capacity similar to that of wild-type livers, which have a
4 large proportion of polyploid cells¹¹⁹. Similarly, in mouse models of chronic liver injury
5 followed by competitive repopulation of hepatocytes, diploid and octoploid hepatocytes have
6 been shown to have equivalent repopulation potentials^{117, 173}. By contrast, other studies have
7 supported the idea that the polyploid state acts to suppress growth and restrict proliferation.
8 Ganem et al. reported that cytokinesis failure during postnatal murine liver development
9 triggers the Hippo–LATS2–p53 pathway, which restricts the growth of tetraploid hepatocytes
10¹⁷⁴. In addition, tetraploid murine hepatocyte growth has been shown to increase in a *Trp53*^{-/-}
11^{147, 174}. In 2018, Wilkinson et al. investigated whether diploid hepatocytes from wild-type
12 mouse livers had a proliferative advantage compared with polyploidy contingent¹⁴¹. They
13 observed, both *in vitro* (primary mouse hepatocyte cultures) and *in vivo* (mouse liver
14 regeneration assays), similar responses of diploid and polyploid hepatocytes to hepatic
15 mitogens, indicating that proliferation kinetics are unrelated to differential responses to
16 growth stimuli. However, they also showed that diploid hepatocytes entered and completed
17 the cell cycle more rapidly than their polyploid counterparts. Differences were also observed
18 among polyploid hepatocytes, with tetraploid cells entering the cell cycle more rapidly than
19 octoploids. The authors suggested that cell cycle regulation might subtly differ between
20 diploid and polyploid contingents (for example, early replication licensing and mitosis
21 progression). The restrictive proliferation of the polyploid contingent might be related solely
22 to ageing. Diploid, tetraploid and octoploid hepatocytes from two-month-old mice have
23 identical capacities to repopulate the liver and do not express specific senescence markers,
24 such as p16, p21 and p53^{175, 176}. However, as mice age, the expression of these senescence
25 markers becomes substantially stronger in octoploid than in diploid and tetraploid

1 hepatocytes, and the repopulation potential of the octoploid contingent also decreases^{175, 176}.
2 Collectively, these data suggest that polyploid hepatocytes retain the ability to respond to
3 mitogen stimuli and to proliferate. However, during ageing, and possibly in some liver
4 diseases, polyploidy might induce senescence-type changes. Studies are therefore required to
5 improve our understanding of ploidy-specific proliferation in different liver injuries such as
6 chronic liver disease.

7 ***[H2] Polyploidization as an enhancer of liver functions***

8 Polyploidy is a common strategy for organogenesis in various systems and organs including
9 the liver and, over the past 10 years, many studies in different experimental models have
10 highlighted specific functions for polyploid cells^{7, 24, 25, 177}. An innovative study by Rios and
11 co-workers revealed a role for specific mammalian polyploid cells¹⁷⁸. They observed
12 binucleate polyploid cells in the lactating mammary glands of several different species (e.g.
13 humans, cows and mice)¹⁷⁸. In mice, aurora kinase A (AURKA) and PLK1 control the
14 generation of these binucleate cells by cytokinesis failure at the time of the switch to lactation
15 in response to various signals, including prolactin and epidermal growth factor. The
16 binucleate alveolar cells were shown to be essential for lactation. Deletion of *Aurka* inhibited
17 the formation of binucleate cells and decreases milk synthesis¹⁷⁸.

18 The liver participates in diverse functions, and it is tempting to speculate that physiologically
19 polyploid hepatocytes have their own features and roles. The gene expression profile in the
20 liver changes throughout the lobule (along the portocentral axis), resulting in a spatial
21 zonation of tasks¹⁰⁵⁻¹⁰⁹. Several groups have investigated whether polyploid hepatocytes
22 display a specific distribution within mouse hepatic lobules that might account for specific
23 functions, but the findings of these studies are conflicting. Some studies suggested that the
24 periportal region contains fewer polyploid hepatocytes than the perivenous region^{118, 171},
25 whereas others suggested that the proportions of polyploid cells were similar in both regions

1 ^{119, 134}. Two studies used tissue-imaging systems to reconstruct spatial zonation in the murine
2 liver and to quantify hepatocyte polyploidy ^{129, 179}. They showed that the periportal and
3 perivenous regions were enriched in tetraploid hepatocytes but had a low density of octoploid
4 hepatocytes, whereas the mid-lobule region (equidistant between the periportal and
5 perivenous regions) displayed the opposite pattern: it was enriched in octoploid hepatocytes
6 but had a low density of tetraploid hepatocytes. They concluded that liver polyploidy
7 proceeds in spatial waves, advancing more rapidly in the mid-lobule region than in the
8 periportal and perivenous zones. One study investigated whether this zonation of polyploidy
9 was conserved in normal human hepatic lobules. Bou-Nader et al. observed that neither
10 mononucleate ($4n$ or $\geq 8n$) nor binucleate ($2 \times 2n$ or $\geq 2 \times 4n$) polyploid hepatocytes had a
11 specific zonal distribution ¹²⁰. Much less is known about metabolic zonation in the human
12 liver than in the mouse liver ¹⁰⁸. Single-cell *in situ* experiments will be required to analyse the
13 combined effects of metabolic zonation and polyploidy on hepatocyte fate.

14 A simple model used to explain the effects of polyploidy on cellular functions increases
15 transcription/translation on a per cell basis (e.g. twice as many genes would produce twice as
16 many proteins) ^{177, 180, 181}. However, the situation is not quite that simple, as it has been
17 shown, in a number of species (e.g. plants, *Drosophila*, mammalian cells) that polyploidy
18 promotes nonuniform genome, transcriptome, epigenome and metabolome modifications ¹⁷⁷.

19 A few years ago, Lu et al. used a microarray approach to analyse the gene expression profile
20 of fluorescence-activated cell sorting (FACS)-isolated diploid, tetraploid and octoploid
21 hepatocytes from wild-type mice ¹⁸². Surprisingly, only a few differences in gene expression
22 profile between the different populations were found. Kreutz and co-workers suggested that
23 gene expression profiles differ between diploid and mononucleate polyploid hepatocytes, but
24 not between diploid and binucleate polyploid hepatocytes ¹⁸³. This finding would suggest that
25 increases in nuclear ploidy in the liver parenchyma affect hepatocyte fate, a hypothesis that

1 was tested in mice that lack the mitotic kinase CDK1. Following partial hepatectomy, *Cdk1*-
2 knockout livers regenerate fully, but hepatocytes endoreplicate, resulting in a large proportion
3 of mononucleate polyploid hepatocytes in the liver ¹⁴⁶. Using this model, Miettinen et al.
4 showed that higher ploidy levels were associated with lower levels of expression of
5 mitochondrial and *de novo* lipid biosynthesis genes and with higher levels of expression of
6 glycolysis genes ¹⁸¹. The inhibition of mitochondrial functions and lipid synthesis increases
7 cell size in human epithelial cells, suggesting a possible causal link cellular metabolism and
8 polyploidy ¹⁸¹. These results are consistent with the results of a comparative genome-scale
9 analysis of mouse and human liver tissues with different levels of polyploidy, in which highly
10 polyploid livers displayed anaerobic energy production, with ATP obtained from
11 carbohydrates rather than from fatty acids ^{184, 185}. Collectively, these results suggest a
12 probable link between polyploidy and energy demands. Cells that display endoreplication or
13 cytokinesis failure can channel the energy that would have otherwise gone into cell division
14 (in particular, ATP and lipid membrane consumption) for other purposes ⁹⁹. Thus,
15 polyploidization might facilitate rapid adaptation to stresses and new-environmental cues.
16 Finally, Itzkovitz and collaborators demonstrated that liver polyploidy dampens the intrinsic
17 variability associated with transcriptional bursts ¹⁸⁶. In prokaryotes and eukaryotes, many
18 genes are transcribed in bursts, with stochastic production of mRNA from the transcription
19 sites, and with transcription switching between ‘on’ and ‘off’ states ¹⁸⁷. Using single molecule
20 fluorescence *in situ* hybridization (FISH), the authors demonstrated that gene expression in
21 the intact mouse liver consists of transcriptional bursts ¹⁸⁶. They observed that transcriptional
22 noise tends to be lower in tetraploid hepatocytes than in diploid hepatocytes. The authors
23 suggest that liver polyploidization might therefore counteract the noise increase caused by
24 genes becoming ‘burstier’ with age, leading to a more controlled gene expression.

25

1 ***[H2] Polyploidization creates genetic diversity***

2 Proliferating polyploid hepatocytes can increase their DNA content, but they can also reduce
3 it, through a process known as ploidy reversal^{117, 121, 188}. Polyploid hepatocytes have larger
4 numbers of chromosomes than their diploid counterparts, but they also have supernumerary
5 centrosomes. For example, tetraploid hepatocytes (mononucleate or binucleate) have two
6 centrosomes in G1–S phases and four centrosomes in G2–M phases⁸⁹. In most cases,
7 proliferating polyploid hepatocytes form a bipolar mitotic spindle through a specific
8 centrosome cluster (two centrosomes at each spindle pole), leading to the generation of
9 polyploid progenies (FIG. 4)^{89, 117}. Polyploid hepatocytes can also form multipolar mitotic
10 spindles and, in this case, cell division can lead to the generation of three or more daughter
11 cells with lower ploidy states than maternal cells (a phenomenon known as ploidy reversal)
12 (FIG. 4)¹¹⁷. The formation of a multipolar mitotic spindle is also linked to chromosome
13 segregation errors that arise from merotelic chromosome attachments (the attachment of one
14 kinetochore to both mitotic spindle poles). In this case, the division of polyploid hepatocytes
15 leads to random whole-chromosome gains and/or losses, resulting in aneuploid contingents
16^{117, 121}. The connection between polyploidy, ploidy reversal and aneuploidy has been called
17 the ‘ploidy conveyor’¹¹⁰. Interestingly, aneuploidy is observed in many different healthy
18 human tissues, including those of the skin, brain and placenta^{117, 121, 188-191}. However, the
19 degree of aneuploidy in the healthy liver remains a matter of debate. Studies of proliferating
20 polyploid hepatocytes in primary mouse culture have revealed high rates of chromosome
21 segregation errors and aneuploidy (approximately 60%)^{117, 192}. By contrast, single-cell
22 sequencing of hepatocytes in mouse and human liver tissues has revealed only a low level of
23 aneuploidy (about 5%)¹⁸⁸. An elegant study by Knouse and collaborators examine the
24 importance of the tissue environment for chromosome segregation fidelity in the polyploid
25 liver¹⁷². By comparing images of mitotic polyploid hepatocytes in mouse regenerating liver

1 or in primary cultures, they demonstrated that tissue architecture is particularly important for
2 the correction of merotelic attachments and, therefore, for chromosome segregation fidelity in
3 the polyploid liver ¹⁷². Recently, Marcus Grompe's group has developed a sophisticated
4 multicolor reporter allele system to genetically label and trace *in situ* mouse polyploid
5 hepatocytes *in situ* ¹⁹³. They observed that polyploid hepatocytes regenerate injured livers and
6 frequently reduce their ploidy. Ploidy-reduced progenies proliferate and keep the property to
7 increase their ploidy content. Importantly, they observed that during ploidy reduction
8 chromosome segregation is not random but faithful. All these data reinforce our view that the
9 ploidy conveyor model is intriguing, not least because it could generate genetic diversity in
10 the healthy liver. Duncan and co-workers have analysed the role of hepatic aneuploidy in
11 chronic liver injury, using *Fah*^{-/-} mice, a well-known model of hereditary tyrosinaemia type 1
12 ¹⁹⁴. In response to massive liver failure, hepatocytes with a partial loss of chromosome 16
13 expanded, repopulated the liver and restored liver function ¹⁹². The partial loss of
14 chromosome 16, which carries the gene that encodes homogentisate 1, 2-dioxygenase, confers
15 resistance to the disease in this model of liver injury. Interestingly, a loss of polyploidy in the
16 liver (*E2f7/E2f8* double knockout mouse model) resulted in decreased aneuploidy rates and
17 decreased the ability of the liver to adapt to tyrosinaemia-induced liver failure ¹⁹⁵. Further
18 studies are now required to determine whether ploidy reversal and specific aneuploid
19 hepatocytes can facilitate adaptation in chronic human liver diseases.

20 ***[H2] Benefits of polyploidization for tissue repair***

21 Polyploidy can be benefic after acute organ failure in different organs, as shown in
22 *Drosophila* in particular. Losick and co-workers have shown that polyploidization contributes
23 to wound healing in adult *D. melanogaster* epithelia ¹⁹⁶. Indeed, the epithelial cells that
24 surround the injury site re-enter S phase, but, rather than dividing, these cells undergo
25 endocycling and become polyploid. In this case, epidermal repair is inhibited when

1 polyploidy is blocked. In mammals, polyploidy can also be beneficial for tissue repair (e.g.
2 mouse, human)^{24, 25, 197}. In an elegant study, Cao and co-workers devised genetic tools and
3 live imaging methods for visualizing cell-cycle dynamics during the regeneration of the
4 zebrafish epicardium²⁶. Their results demonstrate that cells in the leading edge (called ‘leader
5 cells’) of the regenerating epicardium undergo endoreplication or cytokinesis failure and
6 generate polyploid cells. Farther from the lesion, ‘follower cells’ complete the cell cycle. An
7 increase in mechanical tension at the leading edge was found to be a key factor driving
8 polyploidy. Interestingly, most polyploid leader cells undergo apoptosis when regeneration is
9 complete. These results suggest that mechanical tension within a tissue can favour polyploidy
10 to support tissue regeneration²⁶.

11 As the liver is the most robust regenerative organ in the human body and one of the best
12 examples of polyploid tissues, it was tempting to speculate that the polyploid contingent has a
13 major role in tissue repair. As described above, polyploid hepatocytes proliferate during
14 mouse liver regeneration after partial hepatectomy. Surprisingly, these cells being as effective
15 as diploid hepatocytes at restoring injured tissues²⁸. This phenomenon has been analysed in
16 the liver of *E2f7/E2f8* double knockout (LDKO) mice presenting reduced polyploidy.
17 Resected polyploid livers (wild-type) support regeneration as effectively as resected
18 predominantly diploid livers (LDKO)^{119, 198}. Furthermore, no difference in regeneration was
19 observed when wild-type and LDKO livers were treated acutely with hepatotoxins, such as
20 carbon tetrachloride or 3,5-diethoxycarbonyl-1,4-dihydrocollidine^{65, 119}. These results suggest
21 that the restoration of liver size by polyploid cell growth during liver regeneration after partial
22 hepatectomy or after acute injury is not beneficial. Future studies will determine whether
23 polyploidization is beneficial for tissue repair following chronic liver injury.

24

25 **[H1] Polyploidy in liver tumorigenesis**

26

1 Polyploid cells have been observed in multiple cancer types such as pancreatic¹⁹⁹, cervical⁵³,
2 lung²⁰⁰, colon²⁰¹ and prostate²⁰². Genomic studies have revealed that approximately 30% of
3 solid tumours have polyploid or near-polyploid karyotypes^{36, 203}. Clinically, polyploidy has
4 been associated with aggressive, difficult-to-treat different solid tumours (e.g. colorectal and
5 pancreatic cancers)^{80, 203, 204}. Numerous studies have observed that polyploid cells are present
6 from the transition from premalignant to malignant disease suggesting that a genome-
7 multiplying event can be a driver of tumorigenesis^{53, 205, 206}. It is therefore not surprising that
8 mechanisms have evolved to limit the proliferation of these cells. It is well illustrated that the
9 p53 pathway limits the proliferation of polyploid cells to protect genomic integrity^{30, 207, 208}.
10 Polyploid cancer cells (e.g. colorectal, fibrosarcoma) can be also recognized by the immune
11 system in such a way that their growth is suppressed or delayed^{74, 209}. It has been
12 demonstrated that CD4⁺ and CD8⁺ T lymphocytes, the interferon system²¹⁰ and NK cells²¹¹
13 are involved in the control of polyploid cells. One of the mechanism through which polyploid
14 cells can be recognized by the immune system implies an endoplasmic reticulum (ER) stress
15 response resulting in the exposure of the ‘eat-me’ signal calreticulin (CALR) at the cell
16 surface^{210, 212}. Senovilla and collaborators also demonstrated that polyploid mouse colon
17 cancer readily proliferated in immunodeficient mice and conserved their increased DNA
18 content²¹⁰. Interestingly, the same cells injected into immunocompetent mice generated
19 tumours only after a delay, and such tumours exhibited reduced DNA content, endoplasmic
20 reticulum stress and calreticulin exposure²¹⁰.
21 The accepted model is that tetraploidy drives carcinogenesis by acting as a stochastic
22 generator of genomic instability. As described earlier, polyploid cells have supernumerary
23 centrosomes, and this feature is linked to high rates of chromosome missegregation in mitosis
24^{207, 213, 214}. Also, one study neatly showed in colorectal cancer cell lines that tetraploidy
25 induces replication stress through a massive deregulation of genes that are involved in the

1 correct functioning of the DNA replication machinery²¹⁵. Replication stress has emerged as a
2 source of CIN²¹⁶. Several laboratories working on different experimental models have shown
3 that polyploidy is a gateway state that participate to tumorigenesis^{34, 70, 204, 217}. The pioneering
4 experiments were performed by David Pellman and colleagues who showed that *TP53*^{-/-}
5 tetraploid mammary epithelial cells gave rise to malignant tumours in nude mice, whereas
6 *TP53*^{-/-} diploid mammary epithelial cells did not^{34, 217}. This finding led to the suggestion that
7 tetraploidy causes tumorigenesis. The temporal relationship between *TP53* mutations and
8 polyploidy has been analysed in tumours from prospectively characterized patients with
9 advanced cancers (e.g. colorectal, pancreatic, lung, uterine)²⁰³. As expected, polyploidy was
10 statistically associated with *TP53*-mutated tumours. Interestingly, telomerase reverse
11 transcriptase (TERT) promoter mutations are associated with an E2F-mediated G1 arrest
12 defect, but not with polyploidization²⁰³. Overall, these data suggest that polyploidization is a
13 key step in tumour formation and progression.

14 The link between polyploidy and the origin of cancer has primarily been demonstrated in
15 tissues that are physiologically diploid. The role of polyploidy during liver tumorigenesis is
16 quite puzzling, owing to the physiologically polyploid state of normal adult liver. Whether
17 polyploidy is a risk factor for or protective against malignant transformation was until
18 recently unknown. The most widely-accepted hypothesis is that liver polyploidy acts as a
19 gatekeeper of tumorigenesis²¹⁸. In theory, physiological polyploidization could protect cells
20 against genotoxic damage by increasing gene copy numbers per cell, which could at least
21 buffer gene-inactivating mutations^{22, 177}. We can easily imagine that in a diploid cell the loss
22 of heterozygosity of a tumour suppressor gene could have dramatic consequences, such as
23 uncontrolled proliferation. Acquiring multiple sets of chromosomes could provide backup
24 tumour suppressor gene copies. In a series of elegant experiments, Zhang et al. demonstrated
25 that polyploid mouse livers were protected from tumour-suppressor loss of heterozygosity¹⁹⁸.

1 To modify the liver ploidy spectrum, two genes were silenced: *Anln*, an actin-binding protein
2 required for cytokinesis, and *E2f8*, which is required for liver polyploidization. Ploidy was
3 substantially increased after *Anln* knockdown (livers with the majority of hepatocytes are
4 polyploid) and decreased after *E2f8* knockdown (livers with the majority of hepatocytes are
5 diploid). The authors observed that higher levels of polyploidy reduced tumour incidence in
6 diverse mouse liver cancer models, suggesting that polyploidy helps to prevent tumour
7 development. Notably, in this study, ploidy content has been modified in non-tumoural liver
8 tissue with wild-type *Trp53*. As demonstrated in others contexts, it is likely that polyploidy in
9 the absence of *Trp53* could be a driver of liver tumorigenesis. The presence of polyploid cells
10 within liver tumours could also act as a driver of tumour progression. In 2019, an *in situ*
11 imaging approach was developed to determine whether cellular and nuclear ploidy content is
12 altered during human liver tumorigenesis ¹²⁰. The ploidy spectra of surgically resected tissues
13 from patients with hepatocellular carcinoma (HCC) as well as from healthy controls were
14 determined. These data show that the binucleate polyploid fraction, or cellular ploidy, is
15 drastically reduced during human liver tumorigenesis ($\approx 15\%$ in normal tissue versus 5% in
16 tumoral tissue). Conversely, the mononucleate polyploid fraction, or nuclear ploidy, is
17 amplified in HCCs ($\approx 12\%$ in normal tissue versus 33% in tumoral tissue). Next, Bou-Nader et
18 al. compared nuclear ploidy spectra on the basis of histological and molecular features of
19 HCC tumours. Nuclear ploidy was sufficient to distinguish between premalignant and
20 malignant liver parenchyma. Mononucleate polyploid hepatocytes were enriched in HCCs
21 that harboured a low grade of differentiation, a high proliferation rate and a poor prognosis.
22 Furthermore, it was observed that *TP53* mutations account for a higher percentage of
23 mononucleate polyploid hepatocytes than both *TERT* promoter-mutated and *CTNNB1*-
24 mutated HCCs.

1 Taken together, these results indicate that polyploid hepatocytes act as a kind of ‘Jekyll and
2 Hyde’ during liver tumorigenesis (FIG. 5). A polyploid state could provide protection from
3 tumorigenesis by providing extra copies of tumour suppressor genes and by restricting
4 hepatocyte proliferation in pre-malignant tissue with wild-type *TP53*. Conversely,
5 amplification of mononucleate polyploid hepatocytes within HCCs is associated with *TP53*
6 mutations, a high proliferative rate and a poor prognosis.

7

8 **[H1] Conclusions**

9

10 Polyploidization is a fascinating mechanism that is essential for tissue homeostasis but also
11 has a role in tumorigenesis. Studies have revealed that the liver is one of the few mammalian
12 organs to display changes in ploidy in various circumstances. In physiological conditions,
13 progressive polyploidization occurs during liver development and in ageing, indicating
14 terminal differentiation. We have learned much about the generation of polyploid hepatocytes
15 through cytokinesis failure, but we still have much to learn about the function of these cells in
16 liver homeostasis.

17 There are still important questions that need to be addressed. Is there a difference in cellular
18 states between diploid and polyploid hepatocytes (that is, in epigenetics, transcriptomes,
19 proteomes, and so on)? Is there a limit to hepatocyte ploidy? How do polyploid hepatocytes
20 cope with genome copy number variation and centrosome amplification? And finally, what
21 are the molecular cues of the ploidy conveyor, and does liver aneuploidy affect human health?

22 The liver parenchyma displays changes in ploidy following tissue injury or stress, particularly
23 in the context of NAFLD. Future studies should aim to understand whether pathological
24 polyploidization takes place in other pathologies, and to determine how these polyploid
25 contingents behave in damaged livers. Do they have specific lobule zonation? Do they
26 influence disease progression? It will be particularly interesting to determine whether

1 hepatocyte polyploidization affects the process of liver infection (for example, of HCV and
2 HBV). Interestingly, *Plasmodium* parasites have been shown to preferentially infect and
3 develop in polyploid hepatocytes²¹⁹.

4 Finally, a major challenge in this field will be to determine whether polyploid HCCs derive
5 from polyploid or diploid hepatocytes. If they are derived from polyploid hepatocytes, then
6 the use of polyploidization to protect the liver would be dangerous. Conversely, if polyploid
7 tumours arise from diploid hepatocytes, then the polyploid state might provide protection in
8 pathological settings by providing extra copies of tumour suppressor genes and restricting
9 hepatocyte proliferation.

10

11

References

1. O'Brien, S.J., Menninger, J.C. & Nash, W.G. in *Acta Physiol (Oxf)* (2006).
2. Otto, S.P. The evolutionary consequences of polyploidy. *Cell* **131**, 452-62 (2007).
3. Weaver, B.A. & Cleveland, D.W. Does aneuploidy cause cancer? *Curr Opin Cell Biol* **18**, 658-67 (2006).
4. Gallagher, J.P., Grover, C.E., Hu, G. & Wendel, J.F. Insights into the Ecology and Evolution of Polyploid Plants through Network Analysis. *Mol Ecol* **25**, 2644-60 (2016).
5. Dehal, P. & Boore, J.L. Two rounds of whole genome duplication in the ancestral vertebrate. *PLoS Biol* **3**, e314 (2005).
6. Soltis, D.E., Visger, C.J. & Soltis, P.S. The polyploidy revolution then...and now: Stebbins revisited. *Am J Bot* **101**, 1057-1078 (2014).
7. Van de Peer, Y., Mizrachi, E. & Marchal, K. The evolutionary significance of polyploidy. *Nat Rev Genet* **18**, 411-424 (2017).
8. Leitch, A.R. & Leitch, I.J. Genomic plasticity and the diversity of polyploid plants. *Science* **320**, 481-3 (2008).
9. Otto, S.P. & Whitton, J. Polyploid incidence and evolution. *Annu Rev Genet* **34**, 401-437 (2000).
10. Ramsey, J. & Schemske, D.W. Pathways, mechanisms and rates of polyploid formation in flowering plants. *Annu. Rev. Ecol. Syst.* **29**, 467-501 (1998).
11. Jiao, Y. et al. Ancestral polyploidy in seed plants and angiosperms. *Nature* **473**, 97-100 (2011).
12. Soltis, D.E., Bell, C.D., Kim, S. & Soltis, P.S. Origin and early evolution of angiosperms. *Ann N Y Acad Sci* **1133**, 3-25 (2008).
13. Soltis, P.S. & Soltis, D.E. Ancient WGD events as drivers of key innovations in angiosperms. *Curr Opin Plant Biol* **30**, 159-65 (2016).
14. Mable, B., Alexandrou, M.A. & Taylor, M.I. Genome duplication in amphibians and fish: an extended synthesis. *Journal of Zoology* **284**, 151-182 (2011).
15. Guc-Scekic, M., Milasin, J., Stevanovic, M., Stojanov, L.J. & Djordjevic, M. Tetraploidy in a 26-month-old girl (cytogenetic and molecular studies). *Clin Genet* **61**, 62-5 (2002).
16. Jacobs, P.A., Szulman, A.E., Funkhouser, J., Matsuura, J.S. & Wilson, C.C. Human triploidy: relationship between parental origin of the additional haploid complement and development of partial hydatidiform mole. *Ann Hum Genet* **46**, 223-31 (1982).
17. Wertheim, B., Beukeboom, L.W. & van de Zande, L. Polyploidy in animals: effects of gene expression on sex determination, evolution and ecology. *Cytogenet Genome Res* **140**, 256-69 (2013).
18. Gallardo, M.H., Bickham, J.W., Honeycutt, R.L., Ojeda, R.A. & Kohler, N. Discovery of tetraploidy in a mammal. *Nature* **401**, 341 (1999).
19. Anzi, S. et al. Postnatal Exocrine Pancreas Growth by Cellular Hypertrophy Correlates with a Shorter Lifespan in Mammals. *Dev Cell* **45**, 726-737 e3 (2018).
20. Oates, P.S. & Morgan, R.G. Changes in pancreatic acinar cell nuclear number and DNA content during aging in the rat. *Am J Anat* **177**, 547-54 (1986).
21. Davoli, T. & de Lange, T. The causes and consequences of polyploidy in normal development and cancer. *Annu Rev Cell Dev Biol* **27**, 585-610 (2011).

- 1 22. Pandit, S.K., Westendorp, B. & de Bruin, A. Physiological significance of
2 polyploidization in mammalian cells. *Trends Cell Biol* **23**, 556-66 (2013).
- 3 23. Ravid, K., Lu, J., Zimmet, J.M. & Jones, M.R. Roads to polyploidy: the
4 megakaryocyte example. *J Cell Physiol* **190**, 7-20. (2002).
- 5 24. Gjelsvik, K.J., Besen-McNally, R. & Losick, V.P. Solving the Polyploid Mystery in
6 Health and Disease. *Trends Genet* **35**, 6-14 (2019).
- 7 25. Ovrebo, J.I. & Edgar, B.A. Polyploidy in tissue homeostasis and regeneration.
8 *Development* **145** (2018).
- 9 26. Cao, J. et al. Tension Creates an Endoreplication Wavefront that Leads
10 Regeneration of Epicardial Tissue. *Dev Cell* **42**, 600-615 e4 (2017).
- 11 27. Lazzeri, E. et al. Endocycle-related tubular cell hypertrophy and progenitor
12 proliferation recover renal function after acute kidney injury. *Nat Commun* **9**,
13 1344 (2018).
- 14 28. Miyaoka, Y. et al. Hypertrophy and unconventional cell division of hepatocytes
15 underlie liver regeneration. *Curr Biol* **22**, 1166-75 (2012).
- 16 29. Auer, G.U., Backdahl, M., Forsslund, G.M. & Askensten, U.G. Ploidy levels in
17 nonneoplastic and neoplastic thyroid cells. *Anal Quant Cytol Histol* **7**, 97-106
18 (1985).
- 19 30. Ganem, N.J., Storchova, Z. & Pellman, D. Tetraploidy, aneuploidy and cancer. *Curr*
20 *Opin Genet Dev* **17**, 157-62 (2007).
- 21 31. Gentric, G. et al. Oxidative stress promotes pathologic polyploidization in
22 nonalcoholic fatty liver disease. *J Clin Invest* **125**, 981-92 (2015).
- 23 32. Hixon, M.L. & Gualberto, A. Vascular smooth muscle polyploidization--from
24 mitotic checkpoints to hypertension. *Cell Cycle* **2**, 105-10 (2003).
- 25 33. Vliegen, H.W., Eulerink, F., Bruschke, A.V., van der Laarse, A. & Cornelisse, C.J.
26 Polyploidy of myocyte nuclei in pressure overloaded human hearts: a flow
27 cytometric study in left and right ventricular myocardium. *Am J Cardiovasc Pathol*
28 **5**, 27-31 (1995).
- 29 34. Fujiwara, T. et al. Cytokinesis failure generating tetraploids promotes
30 tumorigenesis in p53-null cells. *Nature* **437**, 1043-7 (2005).
- 31 35. Jamal-Hanjani, M. et al. Tracking the Evolution of Non-Small-Cell Lung Cancer. *N*
32 *Engl J Med* **376**, 2109-2121 (2017).
- 33 36. Zack, T.I. et al. Pan-cancer patterns of somatic copy number alteration. *Nat Genet*
34 **45**, 1134-1140 (2013).
- 35 37. Yanagimachi, R. & Noda, Y.D. Physiological changes in the postnuclear cap region
36 of mammalian spermatozoa: a necessary preliminary to the membrane fusion
37 between sperm and egg cells. *J Ultrastruct Res* **31**, 486-93 (1970).
- 38 38. Huppertz, B., Frank, H.G., Kingdom, J.C., Reister, F. & Kaufmann, P. Villous
39 cytotrophoblast regulation of the syncytial apoptotic cascade in the human
40 placenta. *Histochem Cell Biol* **110**, 495-508 (1998).
- 41 39. Loutit, J.F. & Nisbet, N.W. The origin of osteoclasts. *Immunobiology* **161**, 193-203
42 (1982).
- 43 40. Taylor, M.V. Muscle differentiation: how two cells become one. *Curr Biol* **12**,
44 R224-8 (2002).
- 45 41. Abmayr, S.M. & Pavlath, G.K. Myoblast fusion: lessons from flies and mice.
46 *Development* **139**, 641-56 (2012).
- 47 42. Kim, J.H., Jin, P., Duan, R. & Chen, E.H. Mechanisms of myoblast fusion during
48 muscle development. *Curr Opin Genet Dev* **32**, 162-70 (2015).

- 1 43. Lluís, F. & Cosma, M.P. Cell-fusion-mediated somatic-cell reprogramming: a
2 mechanism for tissue regeneration. *J Cell Physiol* **223**, 6-13 (2010).
- 3 44. Alvarez-Dolado, M. et al. Fusion of bone-marrow-derived cells with Purkinje
4 neurons, cardiomyocytes and hepatocytes. *Nature* **425**, 968-73 (2003).
- 5 45. Rizvi, A.Z. et al. Bone marrow-derived cells fuse with normal and transformed
6 intestinal stem cells. *Proc Natl Acad Sci U S A* **103**, 6321-5 (2006).
- 7 46. Sanges, D. et al. Wnt/beta-catenin signaling triggers neuron reprogramming and
8 regeneration in the mouse retina. *Cell Rep* **4**, 271-86 (2013).
- 9 47. Wang, X. et al. Cell fusion is the principal source of bone-marrow-derived
10 hepatocytes. *Nature* **422**, 897-901 (2003).
- 11 48. Weimann, J.M., Johansson, C.B., Trejo, A. & Blau, H.M. Stable reprogrammed
12 heterokaryons form spontaneously in Purkinje neurons after bone marrow
13 transplant. *Nat Cell Biol* **5**, 959-66 (2003).
- 14 49. Duelli, D. & Lazebnik, Y. Cell-to-cell fusion as a link between viruses and cancer.
15 *Nat Rev Cancer* **7**, 968-76 (2007).
- 16 50. Moody, C.A. & Laimins, L.A. Human papillomavirus oncoproteins: pathways to
17 transformation. *Nat Rev Cancer* **10**, 550-60 (2010).
- 18 51. Gao, P. & Zheng, J. High-risk HPV E5-induced cell fusion: a critical initiating event
19 in the early stage of HPV-associated cervical cancer. *Virology* **7**, 238 (2010).
- 20 52. Hu, L. et al. Human papillomavirus 16 E5 induces bi-nucleated cell formation by
21 cell-cell fusion. *Virology* **384**, 125-34 (2009).
- 22 53. Olaharski, A.J. et al. Tetraploidy and chromosomal instability are early events
23 during cervical carcinogenesis. *Carcinogenesis* **27**, 337-43 (2006).
- 24 54. Olaharski, A.J. & Eastmond, D.A. Elevated levels of tetraploid cervical cells in
25 human papillomavirus-positive Papanicolaou smears diagnosed as atypical
26 squamous cells of undetermined significance. *Cancer* **102**, 192-9 (2004).
- 27 55. Hartwell, L.H. & Weinert, T.A. Checkpoints: controls that ensure the order of cell
28 cycle events. *Science* **246**, 629-34 (1989).
- 29 56. Edgar, B.A. & Orr-Weaver, T.L. Endoreplication cell cycles: more for less. *Cell* **105**,
30 297-306 (2001).
- 31 57. Fox, D.T. & Duronio, R.J. Endoreplication and polyploidy: insights into
32 development and disease. *Development* **140**, 3-12 (2013).
- 33 58. Lee, H.O., Davidson, J.M. & Duronio, R.J. Endoreplication: polyploidy with purpose.
34 *Genes Dev* **23**, 2461-77 (2009).
- 35 59. Orr-Weaver, T.L. When bigger is better: the role of polyploidy in organogenesis.
36 *Trends Genet* **31**, 307-15 (2015).
- 37 60. Edgar, B.A. & Orr-Weaver, T.L. Endoreplication cell cycles: more for less. *Cell* **105**,
38 297-306. (2001).
- 39 61. Edgar, B.A., Zielke, N. & Gutierrez, C. Endocycles: a recurrent evolutionary
40 innovation for post-mitotic cell growth. *Nat Rev Mol Cell Biol* **15**, 197-210 (2014).
- 41 62. Hu, D. & Cross, J.C. Development and function of trophoblast giant cells in the
42 rodent placenta. *Int J Dev Biol* **54**, 341-54 (2010).
- 43 63. Ogawa, H. et al. Cell proliferation potency is independent of FGF4 signaling in
44 trophoblast stem cells derived from androgenetic embryos. *J Reprod Dev* **62**, 51-8
45 (2016).
- 46 64. Ullah, Z., Kohn, M.J., Yagi, R., Vassilev, L.T. & DePamphilis, M.L. Differentiation of
47 trophoblast stem cells into giant cells is triggered by p57/Kip2 inhibition of CDK1
48 activity. *Genes Dev* **22**, 3024-36 (2008).

- 1 65. Chen, H.Z. et al. Canonical and atypical E2Fs regulate the mammalian endocycle.
2 *Nat Cell Biol* **14**, 1192-202 (2012).
- 3 66. Ouseph, M.M. et al. Atypical E2F repressors and activators coordinate placental
4 development. *Dev Cell* **22**, 849-62 (2012).
- 5 67. Shu, Z., Row, S. & Deng, W.M. Endoreplication: The Good, the Bad, and the Ugly.
6 *Trends Cell Biol* **28**, 465-474 (2018).
- 7 68. Adachi, M. & Brenner, D.A. High molecular weight adiponectin inhibits
8 proliferation of hepatic stellate cells via activation of adenosine monophosphate-
9 activated protein kinase. *Hepatology* **47**, 677-85 (2008).
- 10 69. Radziejwoski, A. et al. Atypical E2F activity coordinates PHR1 photolyase gene
11 transcription with endoreduplication onset. *EMBO J* **30**, 355-63 (2011).
- 12 70. Davoli, T. & de Lange, T. Telomere-driven tetraploidization occurs in human cells
13 undergoing crisis and promotes transformation of mouse cells. *Cancer Cell* **21**,
14 765-76 (2012).
- 15 71. Davoli, T., Denchi, E.L. & de Lange, T. Persistent telomere damage induces bypass
16 of mitosis and tetraploidy. *Cell* **141**, 81-93 (2010).
- 17 72. Balachandran, R.S. & Kipreos, E.T. Addressing a weakness of anticancer therapy
18 with mitosis inhibitors: Mitotic slippage. *Mol Cell Oncol* **4**, e1277293 (2017).
- 19 73. Mishima, M., Pavicic, V., Gruneberg, U., Nigg, E.A. & Glotzer, M. Cell cycle
20 regulation of central spindle assembly. *Nature* **430**, 908-13 (2004).
- 21 74. Vitale, I., Galluzzi, L., Castedo, M. & Kroemer, G. Mitotic catastrophe: a mechanism
22 for avoiding genomic instability. *Nat Rev Mol Cell Biol* **12**, 385-92 (2011).
- 23 75. Rieder, C.L. & Maiato, H. Stuck in division or passing through: what happens when
24 cells cannot satisfy the spindle assembly checkpoint. *Dev Cell* **7**, 637-51 (2004).
- 25 76. Sinha, D., Duijf, P.H.G. & Khanna, K.K. Mitotic slippage: an old tale with a new
26 twist. *Cell Cycle* **18**, 7-15 (2019).
- 27 77. Brito, D.A. & Rieder, C.L. Mitotic checkpoint slippage in humans occurs via cyclin
28 B destruction in the presence of an active checkpoint. *Curr Biol* **16**, 1194-200
29 (2006).
- 30 78. Lee, J., Kim, J.A., Margolis, R.L. & Fotedar, R. Substrate degradation by the
31 anaphase promoting complex occurs during mitotic slippage. *Cell Cycle* **9**, 1792-
32 801 (2010).
- 33 79. Balachandran, R.S. et al. The ubiquitin ligase CRL2ZYG11 targets cyclin B1 for
34 degradation in a conserved pathway that facilitates mitotic slippage. *J Cell Biol*
35 **215**, 151-166 (2016).
- 36 80. Coward, J. & Harding, A. Size Does Matter: Why Polyploid Tumor Cells are Critical
37 Drug Targets in the War on Cancer. *Front Oncol* **4**, 123 (2014).
- 38 81. Dikovskaya, D. et al. Loss of APC induces polyploidy as a result of a combination
39 of defects in mitosis and apoptosis. *J Cell Biol* **176**, 183-95 (2007).
- 40 82. Kinzler, K.W. & Vogelstein, B. Lessons from hereditary colorectal cancer. *Cell* **87**,
41 159-70 (1996).
- 42 83. Caldwell, C.M. & Kaplan, K.B. The role of APC in mitosis and in chromosome
43 instability. *Adv Exp Med Biol* **656**, 51-64 (2009).
- 44 84. D'Avino, P.P., Giansanti, M.G. & Petronczki, M. Cytokinesis in animal cells. *Cold*
45 *Spring Harb Perspect Biol* **7**, a015834 (2015).
- 46 85. Celton-Morizur, S. & Desdouets, C. Polyploidization of liver cells. *Adv Exp Med Biol*
47 **676**, 123-135 (2010).

- 1 86. Fortier, M., Celton-Morizur, S. & Desdouets, C. Incomplete
2 cytokinesis/binucleation in mammals: The powerful system of hepatocytes.
3 *Methods Cell Biol* **137**, 119-142 (2017).
- 4 87. Li, F., Wang, X., Bunger, P.C. & Gerdes, A.M. Formation of binucleated cardiac
5 myocytes in rat heart: I. Role of actin-myosin contractile ring. *J Mol Cell Cardiol*
6 **29**, 1541-51 (1997).
- 7 88. Zimmet, J. & Ravid, K. Polyploidy: occurrence in nature, mechanisms, and
8 significance for the megakaryocyte-platelet system. *Exp Hematol* **28**, 3-16 (2000).
- 9 89. Guidotti, J.E. et al. Liver cell polyploidization: a pivotal role for binuclear
10 hepatocytes. *J Biol Chem* **278**, 19095-101 (2003).
- 11 90. Li, F., Wang, X., Capasso, J.M. & Gerdes, A.M. Rapid transition of cardiac myocytes
12 from hyperplasia to hypertrophy during postnatal development. *J Mol Cell Cardiol*
13 **28**, 1737-46 (1996).
- 14 91. Soonpaa, M.H., Kim, K.K., Pajak, L., Franklin, M. & Field, L.J. Cardiomyocyte DNA
15 synthesis and binucleation during murine development. *Am J Physiol* **271**,
16 H2183-9 (1996).
- 17 92. Bergmann, O. et al. Dynamics of Cell Generation and Turnover in the Human
18 Heart. *Cell* **161**, 1566-75 (2015).
- 19 93. Yuan, X. & Braun, T. Multimodal Regulation of Cardiac Myocyte Proliferation. *Circ*
20 *Res* **121**, 293-309 (2017).
- 21 94. Mollova, M. et al. Cardiomyocyte proliferation contributes to heart growth in
22 young humans. *Proc Natl Acad Sci U S A* **110**, 1446-51 (2013).
- 23 95. Liu, Z., Yue, S., Chen, X., Kubin, T. & Braun, T. Regulation of cardiomyocyte
24 polyploidy and multinucleation by CyclinG1. *Circ Res* **106**, 1498-506 (2010).
- 25 96. Engel, F.B., Schebesta, M. & Keating, M.T. Anillin localization defect in
26 cardiomyocyte binucleation. *J Mol Cell Cardiol* **41**, 601-12 (2006).
- 27 97. Ahuja, P., Sdek, P. & MacLellan, W.R. Cardiac myocyte cell cycle control in
28 development, disease, and regeneration. *Physiol Rev* **87**, 521-44 (2007).
- 29 98. Storchova, Z. & Kuffer, C. The consequences of tetraploidy and aneuploidy. *J Cell*
30 *Sci* **121**, 3859-66 (2008).
- 31 99. Storchova, Z. & Pellman, D. From polyploidy to aneuploidy, genome instability
32 and cancer. *Nat Rev Mol Cell Biol* **5**, 45-54 (2004).
- 33 100. Tormos, A.M., Talens-Visconti, R. & Sastre, J. Regulation of cytokinesis and its
34 clinical significance. *Crit Rev Clin Lab Sci* **52**, 159-67 (2015).
- 35 101. Lacroix, B. & Maddox, A.S. Cytokinesis, ploidy and aneuploidy. *J Pathol* **226**, 338-
36 51 (2012).
- 37 102. Mullins, J.M. & Biesele, J.J. Terminal phase of cytokinesis in D-98s cells. *J Cell Biol*
38 **73**, 672-84 (1977).
- 39 103. Shi, Q. & King, R.W. Chromosome nondisjunction yields tetraploid rather than
40 aneuploid cells in human cell lines. *Nature* **437**, 1038-42 (2005).
- 41 104. Si-Tayeb, K., Lemaigre, F.P. & Duncan, S.A. Organogenesis and development of the
42 liver. *Dev Cell* **18**, 175-89 (2010).
- 43 105. Benhamouche, S. et al. Apc tumor suppressor gene is the "zonation-keeper" of
44 mouse liver. *Dev Cell* **10**, 759-70 (2006).
- 45 106. Gebhardt, R. Metabolic zonation of the liver: regulation and implications for liver
46 function. *Pharmacol Ther* **53**, 275-354 (1992).
- 47 107. Jungermann, K. & Kietzmann, T. Zonation of parenchymal and nonparenchymal
48 metabolism in liver. *Annu Rev Nutr* **16**, 179-203 (1996).

- 1 108. Ben-Moshe, S. & Itzkovitz, S. Spatial heterogeneity in the mammalian liver. *Nat*
2 *Rev Gastroenterol Hepatol* (2019).
- 3 109. Halpern, K.B. et al. Single-cell spatial reconstruction reveals global division of
4 labour in the mammalian liver. *Nature* **542**, 352-356 (2017).
- 5 110. Duncan, A.W. Aneuploidy, polyploidy and ploidy reversal in the liver. *Semin Cell*
6 *Dev Biol* (2013).
- 7 111. Gentric, G. & Desdouets, C. Polyploidization in liver tissue. *Am J Pathol* **184**, 322-
8 31 (2014).
- 9 112. Brodsky, W.Y. & Uryvaeva, I.V. Cell polyploidy: its relation to tissue growth and
10 function. *Int Rev Cytol* **50**, 275-332 (1977).
- 11 113. Carriere, R. Polyploid cell reproduction in normal adult rat liver. *Exp. Cell. Res.* **46**,
12 533-540 (1967).
- 13 114. Nadal, C. & Zajdela, F. [Polyploidy in the rat liver. II. The role of the hypophysis
14 and protein deficiency]. *Exp Cell Res* **42**, 117-29 (1966).
- 15 115. Nadal, C. & Zajdela, F. [Hepatic polyploidy in the rat. IV. Experimental changes in
16 the nucleolar volume of liver cells and their mechanisms of regulation]. *Exp Cell*
17 *Res* **48**, 518-28. (1967).
- 18 116. Anatskaya, O.V., Vinogradov, A.E. & Kudryavtsev, B.N. Hepatocyte polyploidy and
19 metabolism/life-history traits: hypotheses testing. *J Theor Biol* **168**, 191-9
20 (1994).
- 21 117. Duncan, A.W. et al. The ploidy conveyor of mature hepatocytes as a source of
22 genetic variation. *Nature* **467**, 707-10 (2010).
- 23 118. Gandillet, A. et al. Hepatocyte ploidy in normal young rat. *Comp Biochem Physiol A*
24 *Mol Integr Physiol* **134**, 665-73 (2003).
- 25 119. Pandit, S.K. et al. E2F8 is essential for polyploidization in mammalian cells. *Nat*
26 *Cell Biol* **14**, 1181-91 (2012).
- 27 120. Bou-Nader, M. et al. Polyploidy spectrum: a new marker in HCC classification. *Gut*
28 (2019).
- 29 121. Duncan, A.W. et al. Frequent aneuploidy among normal human hepatocytes.
30 *Gastroenterology* **142**, 25-8 (2012).
- 31 122. Kudryavtsev, B.N., Kudryavtseva, M.V., Sakuta, G.A. & Stein, G.I. Human
32 hepatocyte polyploidization kinetics in the course of life cycle. *Virchows Arch B*
33 *Cell Pathol Incl Mol Pathol* **64**, 387-93 (1993).
- 34 123. Toyoda, H. et al. Changes to hepatocyte ploidy and binuclearity profiles during
35 human chronic viral hepatitis. *Gut* **54**, 297-302 (2005).
- 36 124. Toyoda, H., Kumada, T., Bregerie, O., Brechot, C. & Desdouets, C. Conserved
37 balance of hepatocyte nuclear DNA content in mononuclear and binuclear
38 hepatocyte populations during the course of chronic viral hepatitis. *World J*
39 *Gastroenterol* **12**, 4546-8 (2006).
- 40 125. Deschenes, J., Valet, J.P. & Marceau, N. The relationship between cell volume,
41 ploidy. and functional activity in differentiating hepatocytes. *Cell Biophys* **3**, 321-
42 34 (1981).
- 43 126. Epstein, C.J. Cell size, nuclear content and the development of polyploidy in the
44 mammalian liver. *Proc Natl Acad Sci U S A* **57**, 327-334 (1967).
- 45 127. Martin, N.C. et al. Functional analysis of mouse hepatocytes differing in DNA
46 content: volume, receptor expression, and effect of IFNgamma. *J Cell Physiol* **191**,
47 138-44 (2002).

- 1 128. Watanabe, T. & Tanaka, Y. Age-related alterations in the size of human
2 hepatocytes. A study of mononuclear and binucleate cells. *Virchows Arch B Cell*
3 *Pathol Incl Mol Pathol* **39**, 9-20 (1982).
- 4 129. Morales-Navarrete, H. et al. A versatile pipeline for the multi-scale digital
5 reconstruction and quantitative analysis of 3D tissue architecture. *Elife* **4** (2015).
- 6 130. Kato, N. & Lam, E. Chromatin of endoreduplicated pavement cells has greater
7 range of movement than that of diploid guard cells in *Arabidopsis thaliana*. *J Cell*
8 *Sci* **116**, 2195-201 (2003).
- 9 131. Gupta, S. Hepatic polyploidy and liver growth control. *Semin Cancer Biol* **10**, 161-
10 71 (2000).
- 11 132. Viola-Magni, M.P. Synthesis and turnover of DNA in hepatocytes of neonatal rats. *J*
12 *Microsc* **96**, 191-203 (1972).
- 13 133. Hsu, S.H. et al. MicroRNA-122 Regulates Polyploidization in the Murine Liver.
14 *Hepatology* (2016).
- 15 134. Margall-Ducos, G., Morizur-Celton, S., Couton, D., Bregerie, O. & Desdouets, C.
16 Liver Tetraploidization is Controlled by a New Process of Incomplete Cytokinesis.
17 *Journal of Cell Science* **120**, 3633-3639 (2007).
- 18 135. Wheatley, D.N. Binucleation in mammalian liver. Studies on the control of
19 cytokinesis in vivo. *Exp Cell Res* **74**, 455-65. (1972).
- 20 136. Girard, J., Ferre, P., Pegorier, J.P. & Duee, P.H. Adaptations of glucose and fatty acid
21 metabolism during perinatal period and suckling-weaning transition. *Physiol Rev*
22 **72**, 507-62 (1992).
- 23 137. Celton-Morizur, S., Merlen, G., Couton, D. & Desdouets, C. Polyploidy and liver
24 proliferation: central role of insulin signaling. *Cell Cycle* **9**, 460-6 (2010).
- 25 138. Celton-Morizur, S., Merlen, G., Couton, D., Margall-Ducos, G. & Desdouets, C. The
26 insulin/Akt pathway controls a specific cell division program that leads to
27 generation of binucleated tetraploid liver cells in rodents. *J Clin Invest* **119**, 1880-
28 7 (2009).
- 29 139. Wullschleger, S., Loewith, R. & Hall, M.N. TOR signaling in growth and
30 metabolism. *Cell* **124**, 471-84 (2006).
- 31 140. Wong, J.V., Dong, P., Nevins, J.R., Mathey-Prevot, B. & You, L. Network calisthenics:
32 control of E2F dynamics in cell cycle entry. *Cell Cycle* **10**, 3086-94 (2011).
- 33 141. Wilkinson, P.D. et al. The polyploid state restricts hepatocyte proliferation and
34 liver regeneration. *Hepatology* (2018).
- 35 142. del Pozo, J.C., Diaz-Trivino, S., Cisneros, N. & Gutierrez, C. The balance between
36 cell division and endoreplication depends on E2FC-DPB, transcription factors
37 regulated by the ubiquitin-SCF/SKP2A pathway in *Arabidopsis*. *Plant Cell* **18**,
38 2224-35 (2006).
- 39 143. Shibutani, S.T. et al. Intrinsic negative cell cycle regulation provided by PIP box-
40 and Cul4Cdt2-mediated destruction of E2f1 during S phase. *Dev Cell* **15**, 890-900
41 (2008).
- 42 144. Zielke, N. et al. Control of *Drosophila* endocycles by E2F and CRL4(CDT2). *Nature*
43 **480**, 123-7 (2011).
- 44 145. Qi, Q.R. et al. Involvement of atypical transcription factor E2F8 in the
45 polyploidization during mouse and human decidualization. *Cell Cycle* **14**, 1842-58
46 (2015).
- 47 146. Diril, M.K. et al. Cyclin-dependent kinase 1 (Cdk1) is essential for cell division and
48 suppression of DNA re-replication but not for liver regeneration. *Proc Natl Acad*
49 *Sci U S A* **109**, 3826-31 (2012).

- 1 147. Kurinna, S. et al. p53 regulates a mitotic transcription program and determines
2 ploidy in normal mouse liver. *Hepatology* **57**, 2004-13 (2013).
- 3 148. Sheahan, S., Bellamy, C.O., Treanor, L., Harrison, D.J. & Prost, S. Additive effect of
4 p53, p21 and Rb deletion in triple knockout primary hepatocytes. *Oncogene* **23**,
5 1489-97 (2004).
- 6 149. Wu, H. et al. Targeted in vivo expression of the cyclin dependent kinase inhibitor
7 p21 halts hepatocyte cell cycle progression, postnatal liver development and
8 regeneration. *Genes and Dev.* **10**, 245-260 (1996).
- 9 150. Baena, E. et al. c-Myc regulates cell size and ploidy but is not essential for
10 postnatal proliferation in liver. *Proc Natl Acad Sci U S A* **102**, 7286-91 (2005).
- 11 151. Nevzorova, Y.A. et al. Aberrant cell cycle progression and endoreplication in
12 regenerating livers of mice that lack a single E-type cyclin. *Gastroenterology* **137**,
13 691-703, 703 e1-6 (2009).
- 14 152. Li, D. et al. Hepatic loss of survivin impairs postnatal liver development and
15 promotes expansion of hepatic progenitor cells in mice. *Hepatology* **58**, 2109-21
16 (2013).
- 17 153. Kim, S.H. et al. Hepatocyte homeostasis for chromosome ploidization and liver
18 function is regulated by Ssu72 protein phosphatase. *Hepatology* **63**, 247-59
19 (2016).
- 20 154. Zhang, S. et al. Hippo Signaling Suppresses Cell Ploidy and Tumorigenesis
21 through Skp2. *Cancer Cell* **31**, 669-684 e7 (2017).
- 22 155. De Santis Puzzon, M. et al. TGFbeta Induces Binucleation/Polyploidization in
23 Hepatocytes through a Src-Dependent Cytokinesis Failure. *PLoS One* **11**,
24 e0167158 (2016).
- 25 156. Mayhew, C.N. et al. Liver-specific pRB loss results in ectopic cell cycle entry and
26 aberrant ploidy. *Cancer Res* **65**, 4568-77 (2005).
- 27 157. Magami, Y. et al. Cell proliferation and renewal of normal hepatocytes and bile
28 duct cells in adult mouse liver. *Liver* **22**, 419-25 (2002).
- 29 158. Geschwind, H., Alfert, M. & Schooley, C. Liver regeneration and hepatic polyploidy
30 in the hypophysectomized rat. *Exp Cell Res* **15**, 232-5 (1958).
- 31 159. Faktor, V.M. & Uryvaeva, I.V. [Progressive polyploidy in mouse liver following
32 repeated hepatectomy]. *Tsitologiya* **17**, 909-16 (1975).
- 33 160. Gerlyng, P. et al. Binucleation and polyploidization patterns in developmental and
34 regenerative rat liver growth. *Cell Prolif* **26**, 557-65 (1993).
- 35 161. Sigal, S.H. et al. Partial hepatectomy-induced polyploidy attenuates hepatocyte
36 replication and activates cell aging events. *Am J Physiol* **276**, G1260-72 (1999).
- 37 162. Maillet, V. et al. LKB1 as a Gatekeeper of Hepatocyte Proliferation and Genomic
38 Integrity during Liver Regeneration. *Cell Rep* **22**, 1994-2005 (2018).
- 39 163. Madra, S., Styles, J. & Smith, A.G. Perturbation of hepatocyte nuclear populations
40 induced by iron and polychlorinated biphenyls in C57BL/10ScSn mice during
41 carcinogenesis. *Carcinogenesis* **16**, 719-27 (1995).
- 42 164. Muramatsu, Y. et al. Increased polyploid incidence is associated with abnormal
43 copper accumulation in the liver of LEC mutant rat. *Res Commun Mol Pathol*
44 *Pharmacol* **107**, 129-36 (2000).
- 45 165. Yamada, T. et al. Increased polyploidy, delayed mitosis and reduced protein
46 phosphatase-1 activity associated with excess copper in the Long Evans
47 Cinnamon rat. *Res Commun Mol Pathol Pharmacol* **99**, 283-304 (1998).

- 1 166. Lazzerini Denchi, E., Celli, G. & de Lange, T. Hepatocytes with extensive telomere
2 deprotection and fusion remain viable and regenerate liver mass through
3 endoreduplication. *Genes Dev* **20**, 2648-53 (2006).
- 4 167. Ahodantin, J. et al. Hepatitis B virus X protein promotes DNA damage propagation
5 through disruption of liver polyploidization and enhances hepatocellular
6 carcinoma initiation. *Oncogene* **38**, 2645-2657 (2019).
- 7 168. Gentric, G. & Desdouets, C. Liver polyploidy: Dr Jekyll or Mr Hide? *Oncotarget* **6**,
8 8430-1 (2015).
- 9 169. Schmucker, D.L. Do hepatocytes age? *Exp Gerontol* **25**, 403-12 (1990).
- 10 170. Schmucker, D.L. Hepatocyte fine structure during maturation and senescence. *J*
11 *Electron Microsc Tech* **14**, 106-25 (1990).
- 12 171. Asahina, K. et al. Multiplicative mononuclear small hepatocytes in adult rat liver:
13 their isolation as a homogeneous population and localization to periportal zone.
14 *Biochem Biophys Res Commun* **342**, 1160-7 (2006).
- 15 172. Knouse, K.A., Lopez, K.E., Bachofner, M. & Amon, A. Chromosome Segregation
16 Fidelity in Epithelia Requires Tissue Architecture. *Cell* **175**, 200-211 e13 (2018).
- 17 173. Overturf, K., Al-Dhalimy, M., Finegold, M. & Grompe, M. The repopulation
18 potential of hepatocyte populations differing in size and prior mitotic expansion.
19 *Am J Pathol* **155**, 2135-43 (1999).
- 20 174. Ganem, N.J. et al. Cytokinesis failure triggers hippo tumor suppressor pathway
21 activation. *Cell* **158**, 833-48 (2014).
- 22 175. Wang, M.J., Chen, F., Lau, J.T.Y. & Hu, Y.P. Hepatocyte polyploidization and its
23 association with pathophysiological processes. *Cell Death Dis* **8**, e2805 (2017).
- 24 176. Wang, M.J. et al. Reversal of hepatocyte senescence after continuous in vivo cell
25 proliferation. *Hepatology* **60**, 349-61 (2014).
- 26 177. Schoenfelder, K.P. & Fox, D.T. The expanding implications of polyploidy. *J Cell Biol*
27 **209**, 485-91 (2015).
- 28 178. Rios, A.C. et al. Essential role for a novel population of binucleated mammary
29 epithelial cells in lactation. *Nat Commun* **7**, 11400 (2016).
- 30 179. Tanami, S. et al. Dynamic zonation of liver polyploidy. *Cell Tissue Res* **368**, 405-
31 410 (2017).
- 32 180. Coate, J.E. & Doyle, J.J. Quantifying whole transcriptome size, a prerequisite for
33 understanding transcriptome evolution across species: an example from a plant
34 allopolyploid. *Genome Biol Evol* **2**, 534-46 (2010).
- 35 181. Miettinen, T.P. et al. Identification of transcriptional and metabolic programs
36 related to mammalian cell size. *Curr Biol* **24**, 598-608 (2014).
- 37 182. Lu, P. et al. Microarray analysis of gene expression of mouse hepatocytes of
38 different ploidy. *Mamm Genome* **18**, 617-26 (2007).
- 39 183. Kreutz, C. et al. Hepatocyte Ploidy Is a Diversity Factor for Liver Homeostasis.
40 *Front Physiol* **8**, 862 (2017).
- 41 184. Anatskaya, O.V. & Vinogradov, A.E. Genome multiplication as adaptation to tissue
42 survival: evidence from gene expression in mammalian heart and liver. *Genomics*
43 **89**, 70-80 (2007).
- 44 185. Anatskaya, O.V. & Vinogradov, A.E. Somatic polyploidy promotes cell function
45 under stress and energy depletion: evidence from tissue-specific mammal
46 transcriptome. *Funct Integr Genomics* **10**, 433-46 (2010).
- 47 186. Bahar Halpern, K. et al. Bursty gene expression in the intact mammalian liver. *Mol*
48 *Cell* **58**, 147-56 (2015).

- 1 187. Eldar, A. & Elowitz, M.B. Functional roles for noise in genetic circuits. *Nature* **467**,
2 167-73 (2010).
- 3 188. Knouse, K.A., Wu, J., Whittaker, C.A. & Amon, A. Single cell sequencing reveals low
4 levels of aneuploidy across mammalian tissues. *Proc Natl Acad Sci U S A* **111**,
5 13409-14 (2014).
- 6 189. McConnell, M.J. et al. Mosaic copy number variation in human neurons. *Science*
7 **342**, 632-7 (2013).
- 8 190. Weier, J.F. et al. Human cytotrophoblasts acquire aneuploidies as they
9 differentiate to an invasive phenotype. *Dev Biol* **279**, 420-32 (2005).
- 10 191. Westra, J.W. et al. Aneuploid mosaicism in the developing and adult cerebellar
11 cortex. *J Comp Neurol* **507**, 1944-51 (2008).
- 12 192. Duncan, A.W. et al. Aneuploidy as a mechanism for stress-induced liver
13 adaptation. *J Clin Invest* **122**, 3307-15 (2012).
- 14 193. Matsumoto, T., Wakefield, L., Tarlow, B.D. & Grompe, M. In Vivo Lineage Tracing
15 of Polyploid Hepatocytes Reveals Extensive Proliferation during Liver
16 Regeneration. *Cell Stem Cell* (2019).
- 17 194. Grompe, M. & al-Dhalimy, M. Rapid nonradioactive assay for the detection of the
18 common French Canadian tyrosinemia type I mutation. *Hum Mutat* **5**, 105 (1995).
- 19 195. Wilkinson, P.D. et al. Polyploid Hepatocytes Facilitate Adaptation and
20 Regeneration to Chronic Liver Injury. *Am J Pathol* **189**, 1241-1255 (2019).
- 21 196. Losick, V.P., Fox, D.T. & Spradling, A.C. Polyploidization and cell fusion contribute
22 to wound healing in the adult *Drosophila* epithelium. *Curr Biol* **23**, 2224-2232
23 (2013).
- 24 197. Losick, V.P. Wound-Induced Polyploidy Is Required for Tissue Repair. *Adv Wound*
25 *Care (New Rochelle)* **5**, 271-278 (2016).
- 26 198. Zhang, S. et al. The Polyploid State Plays a Tumor-Suppressive Role in the Liver.
27 *Dev Cell* **47**, 390 (2018).
- 28 199. Sato, N. et al. Centrosome abnormalities in pancreatic ductal carcinoma. *Clin*
29 *Cancer Res* **5**, 963-70 (1999).
- 30 200. Lothschutz, D. et al. Polyploidization and centrosome hyperamplification in
31 inflammatory bronchi. *Inflamm Res* **51**, 416-22 (2002).
- 32 201. Hamada, S., Itoh, R. & Fujita, S. DNA distribution pattern of the so-called severe
33 dysplasias and small carcinomas of the colon and rectum and its possible
34 significance in the tumor progression. *Cancer* **61**, 1555-62 (1988).
- 35 202. Montgomery, B.T. et al. Stage B prostate adenocarcinoma. Flow cytometric
36 nuclear DNA ploidy analysis. *Arch Surg* **125**, 327-31 (1990).
- 37 203. Bielski, C.M. et al. Genome doubling shapes the evolution and prognosis of
38 advanced cancers. *Nat Genet* **50**, 1189-1195 (2018).
- 39 204. Dewhurst, S.M. et al. Tolerance of whole-genome doubling propagates
40 chromosomal instability and accelerates cancer genome evolution. *Cancer Discov*
41 **4**, 175-185 (2014).
- 42 205. Galipeau, P.C. et al. 17p (p53) allelic losses, 4N (G2/tetraploid) populations, and
43 progression to aneuploidy in Barrett's esophagus. *Proc Natl Acad Sci U S A* **93**,
44 7081-4 (1996).
- 45 206. Maley, C.C. et al. Genetic clonal diversity predicts progression to esophageal
46 adenocarcinoma. *Nat Genet* **38**, 468-73 (2006).
- 47 207. Kneissig, M., Bernhard, S. & Storchova, Z. Modelling chromosome structural and
48 copy number changes to understand cancer genomes. *Curr Opin Genet Dev* **54**,
49 25-32 (2019).

- 1 208. Tanaka, K. et al. Tetraploidy in cancer and its possible link to aging. *Cancer Sci*
2 **109**, 2632-2640 (2018).
- 3 209. Bloy, N. et al. Immunogenic stress and death of cancer cells: Contribution of
4 antigenicity vs adjuvanticity to immunosurveillance. *Immunol Rev* **280**, 165-174
5 (2017).
- 6 210. Senovilla, L. et al. An immunosurveillance mechanism controls cancer cell ploidy.
7 *Science* **337**, 1678-84 (2012).
- 8 211. Acebes-Huerta, A. et al. Drug-induced hyperploidy stimulates an antitumor NK
9 cell response mediated by NKG2D and DNAM-1 receptors. *Oncoimmunology* **5**,
10 e1074378 (2016).
- 11 212. Aranda, F. et al. Immune effectors responsible for the elimination of hyperploid
12 cancer cells. *Oncoimmunology* **7**, e1463947 (2018).
- 13 213. Cosenza, M.R. & Kramer, A. Centrosome amplification, chromosomal instability
14 and cancer: mechanistic, clinical and therapeutic issues. *Chromosome Res* **24**,
15 105-26 (2016).
- 16 214. Ganem, N.J., Godinho, S.A. & Pellman, D. A mechanism linking extra centrosomes
17 to chromosomal instability. *Nature* **460**, 278-82 (2009).
- 18 215. Wangsa, D. et al. Near-tetraploid cancer cells show chromosome instability
19 triggered by replication stress and exhibit enhanced invasiveness. *FASEB J* **32**,
20 3502-3517 (2018).
- 21 216. Burrell, R.A., McGranahan, N., Bartek, J. & Swanton, C. The causes and
22 consequences of genetic heterogeneity in cancer evolution. *Nature* **501**, 338-45
23 (2013).
- 24 217. Lv, L. et al. Tetraploid cells from cytokinesis failure induce aneuploidy and
25 spontaneous transformation of mouse ovarian surface epithelial cells. *Cell Cycle*
26 **11**, 2864-75 (2012).
- 27 218. Zhang, S., Lin, Y.H., Tarlow, B. & Zhu, H. The origins and functions of hepatic
28 polyploidy. *Cell Cycle* **18**, 1302-1315 (2019).
- 29 219. Austin, L.S., Kaushansky, A. & Kappe, S.H. Susceptibility to Plasmodium liver stage
30 infection is altered by hepatocyte polyploidy. *Cell Microbiol* **16**, 784-95 (2014).
- 31

1 **Acknowledgements**

2 The authors are supported by French grants from the Institut National de la Santé et de la
3 Recherche Médicale (INSERM), la Fondation pour la Recherche Médicale (Equipe FRM:
4 EQU201903007824), the Institut National du Cancer (PRTK-2017, PLBIO18-107), the
5 Agence Nationale de Recherche ANR (ANR-16-CE14), Fondation ARC (Association de
6 Recherche sur le Cancer), Ligue Contre le Cancer (comité de Paris), the Cancéropôle Ile-de-
7 France (Emergence 2015), The Association Française pour l'Etude du Foie (AFEV-SUBV
8 2017), EVA-Plan Cancer INSERM HTE and the SIRIC CARPEM. R.D. is a recipient of
9 Fondation pour la Recherche Médicale (PhD grant). P.C. is a recipient of Plan Cancer
10 INSERM (program « Soutien pour la formation à la recherche fondamentale et
11 translationnelle en cancérologie »).

12

13

1 **Fig. 1 | Characteristics of polyploidy.** a| Ploidy is the number of complete sets of
2 chromosomes in a cell. Somatic individual organisms, tissues and cells can be described
3 according to the number of sets of chromosomes present: haploid (1 set), diploid (2 sets),
4 tetraploid (4 sets). b | Polyploidy is defined on the basis of the DNA content of each nucleus,
5 which is called nuclear ploidy (for example, a cell can be tetraploid mononucleate ($4n$) or
6 octoploid mononucleate ($8n$)), and on the number of nuclei per cell, which is called cellular
7 ploidy (for example, a cell can be tetraploid binucleate ($2 \times 2n$) or hexaploid trinucleate
8 ($3 \times 2n$)). n , chromosome number.

9

10 **Fig. 2 | Molecular mechanisms that lead to the polyploid state.** Polyploid cells can be
11 generated through various mechanisms that are classified according to their dependence on
12 the cell cycle. a | The only cell cycle-independent process that leads to polyploid cells is cell
13 fusion, which can occur during virus-mediated infections or through receptor–ligand
14 interactions, giving rise to binucleate or multinucleated cells. b | The other mechanism relies
15 on modifications of the canonical eukaryotic cell cycle that arise either during interphase (G1,
16 S and G2) or mitosis (prophase, metaphase, anaphase and telophase). c | Endoreplication
17 encompasses both endocycling and endomitosis. (1) Endocycling is comprised of alternating
18 G and S phases, which eventually results in a rise in nuclear ploidy. This aberrant cell cycle is
19 achieved by the combination of S-phase cyclin-dependent kinase (S-CDK) oscillation and
20 mitotic entry impediment, either through cyclin B proteolysis or M-phase cyclin-dependent
21 kinase (M-CDK) inhibition. (2) Endomitosis stems from issues that arise during mitosis. For
22 instance, prolonged spindle assembly checkpoint (SAC) activation in metaphase resulting
23 from a non-amphitelic chromosome attachment can be accompanied by progressive cyclin B1
24 degradation. This process, known as mitotic slippage, allows the cell to escape mitosis and
25 reach G1. (3) Finally, cytokinesis failure can result in the genesis of binucleate cells by

1 preventing the physical separation of the cytoplasm (through cytokinesis) in telophase.
2 Cytokinesis failure can be induced as a result of any interferences emerging during the highly
3 regulated process of cytokinesis. Lightning bolts indicate the location of cell-cycle anomalies,
4 such as lagging chromosomes or cytoskeleton disorganization.

5 **Fig. 3 | Polyploidization during post-natal liver growth.**

6 **a** | Polyploidization of hepatic tissue is a progressive developmental process that takes place
7 around the time of weaning and is regulated by insulin, PI3K–mTORC2, E2F and miR-122
8 signalling. At birth, hepatocytes are exclusively diploid mononucleate ($2n$). During post-natal
9 liver development after weaning, diploid hepatocytes can either enter the normal cell cycle
10 (indicated by the blue arrow), giving rise to two diploid hepatocytes, or follow an aberrant
11 cell cycle that is characterized by incomplete cytokinesis (indicated by the orange arrow),
12 giving rise to one binucleate tetraploid ($2 \times 2n$) hepatocyte. Progressive polyploidization takes
13 place via this process in the liver parenchyma, and tetraploid and octoploid cells with one or
14 two nuclei are formed. Up to 90% of adult hepatocytes in rodents and approximately 30% in
15 humans are polyploid. **b** | During the complete cytokinesis process (left panel), the cytokinetic
16 machinery (MgcRacGAP; red; left upper panel) localized during anaphase both on the central
17 spindle and on astral equatorial microtubules and during telophase at the midbody.
18 Consequently, RhoA (green; left lower panel), the major cytokinesis orchestrator,
19 accumulates at the equatorial cortex in early telophase, leading to the formation of the
20 cytokinetic ring and the genesis of two diploid progenies. During incomplete cytokinesis
21 (right panel), microtubules are disorganized (green; right upper panel). Consequently,
22 MgcRacGAP (red; right upper panel) is observed on the remaining interdigitating
23 microtubules in anaphase and telophase but is never localized on unattached astral equatorial
24 microtubules, indicating that molecular signals delivered by microtubules to the equatorial
25 cortex are impaired. Furthermore, RhoA (green; right lower panel) does not correctly localize

1 at the equatorial cortex and is instead observed near the cell centre, close to central spindle
2 microtubules. Consequently, activation of RhoA GTPase in the central cortex is impaired,
3 leading to the genesis of binucleate progeny. *Adapted from Figure 6*¹³⁴.

4

5 **Fig. 4 | The genesis of mononucleate polyploid hepatocytes in physiopathological**
6 **contexts.** In human and mouse models of nonalcoholic fatty liver disease, the oxidative stress
7 caused by an increase in levels of reactive oxygen species (ROS) induces the activation of the
8 DNA damage response (ATR–p53–p21). This activation leads to multiple endoreplication
9 cycles, generating polyploid mononucleate hepatocytes (for example, a tetraploid
10 mononucleate cell ($4n$) or an octoploid mononucleate cell ($8n$)). During liver regeneration,
11 there is also a shift from cellular ploidy to nuclear ploidy (for example, a diploid binucleate
12 cell can form two tetraploid mononucleate cells, and a tetraploid binucleate cell can form two
13 octoploid mononucleate cells or a $16n$ mononucleate cell). The hepatic parenchyma is also
14 enriched in polyploid mononucleate hepatocytes (for example, $4n$ and $8n$ cells) following an
15 iron or copper overload. n , chromosome number.

16

17 **Fig. 5 | The polyploid state: gatekeeper or driver of liver tumorigenesis?** Depending on
18 the context and especially on the *TP53* status (that is, mutated or wild-type), the polyploid
19 state can be regarded as a gatekeeper or a driver of hepatocarcinogenesis. Indeed, polyploid
20 hepatocytes (for example, $4n$ and $8n$) are more resistant to oncogenic events than diploid
21 hepatocytes because they possess extra copies of tumour suppressor genes, which confers
22 protection against loss of heterozygosity by buffering the effects of inactivating mutations.
23 Furthermore, the polyploid state can hinder hepatocyte proliferation by means of the p53-
24 dependent ‘tetraploid checkpoint’, which restricts proliferation and favours commitment to

1 cell death. It is therefore thought that liver tumours stem from diploid hepatocytes. *TP53*
2 mutation represents a crucial event in the development of polyploid tumors, which are
3 associated with enhanced aggressiveness and poor prognosis. Indeed, interfering with the p53
4 pathway allows polyploid cells to resume the cell cycle despite exhibiting deleterious
5 chromosomal instability, which ultimately leads to aneuploidy. Hence, the polyploid state acts
6 as a tumour-promoting mechanism by amplifying genomic aberrations and exacerbating
7 tumour aggressiveness. However, it remains unknown whether polyploid tumours arise from
8 a proliferating polyploid clone or from an initiating diploid tumour that has subsequently
9 undergone polyploidization.

10

11

12

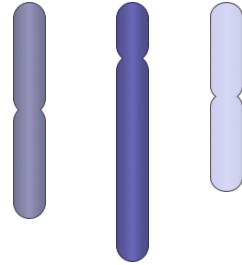
13

14

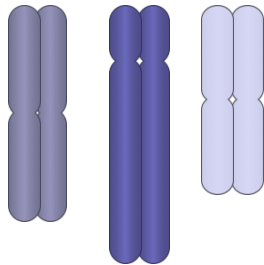
Figure 1:

A

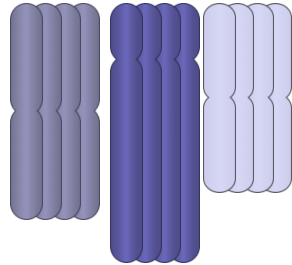
HAPLOID STATE



DIPLOID STATE



TETRAPLOID STATE



B

Nuclear ploidy



Tetraploid mononucleate cell



Octoploid mononucleate cell

Cellular ploidy



Tetraploid binucleate cell



Hexaploid trinucleate cell

Figure 2:

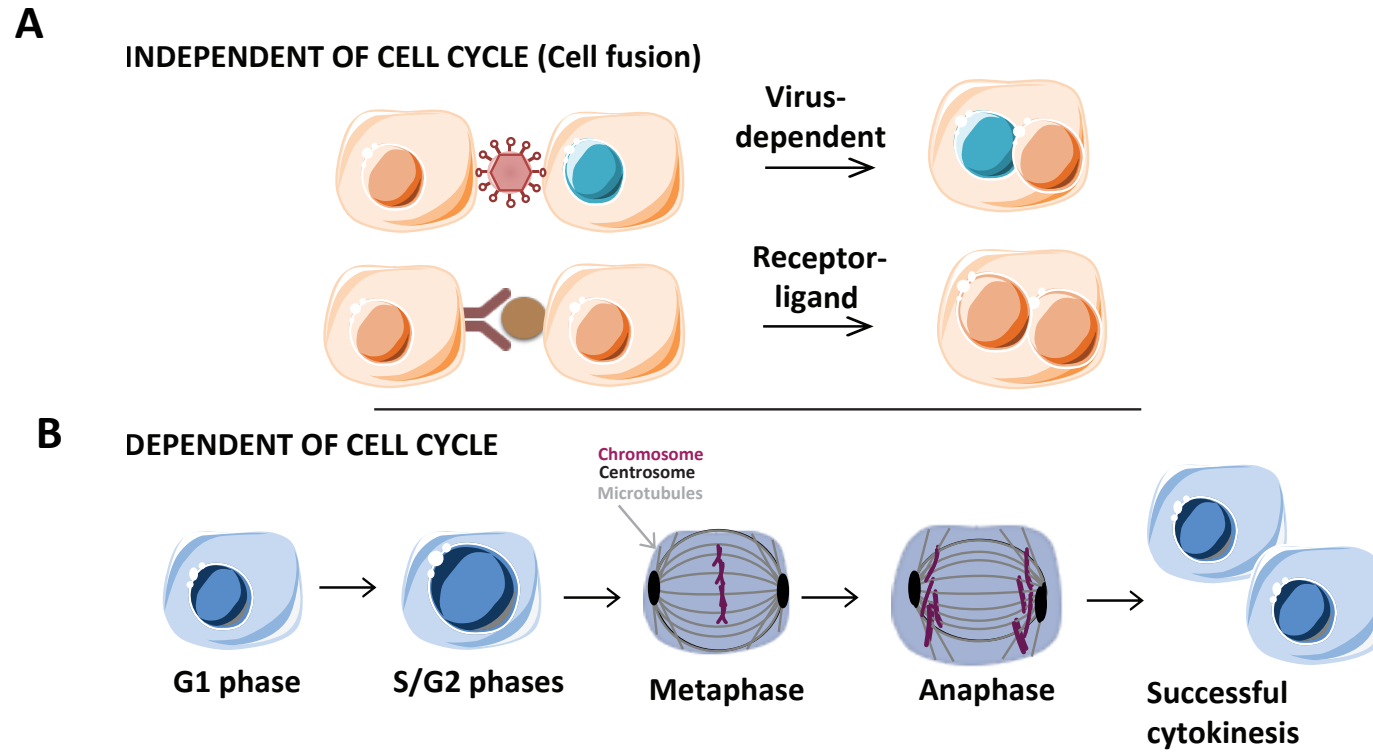
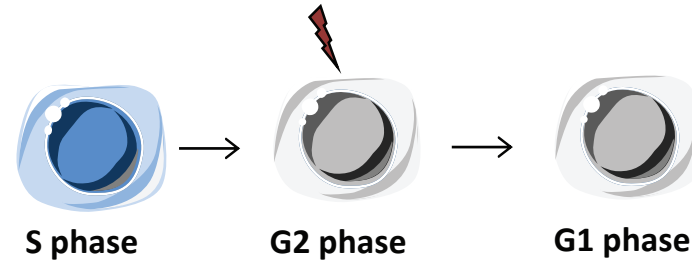


Figure 2:

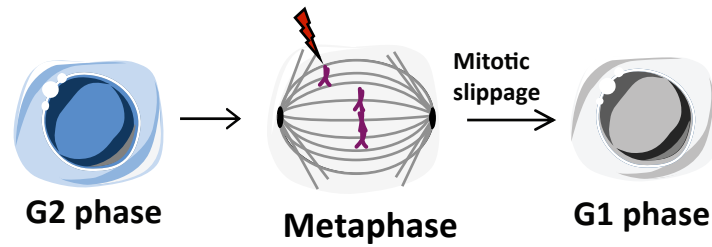
C

1 Endoreplication / Endocycling



- S-CDK oscillation
- M-CDK inhibition

2 Endoreplication / Endomitosis



- SAC activation
- + Cyclin B1 degradation
- = Survival

3 Cytokinesis failure

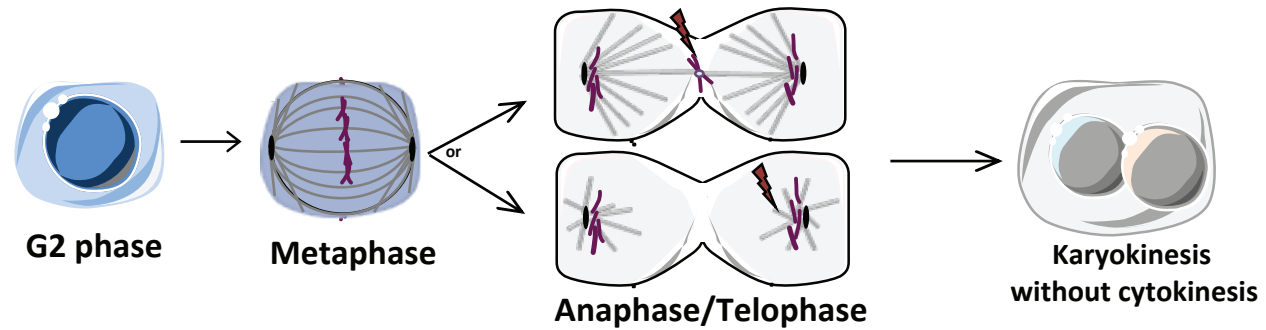


Figure 3:

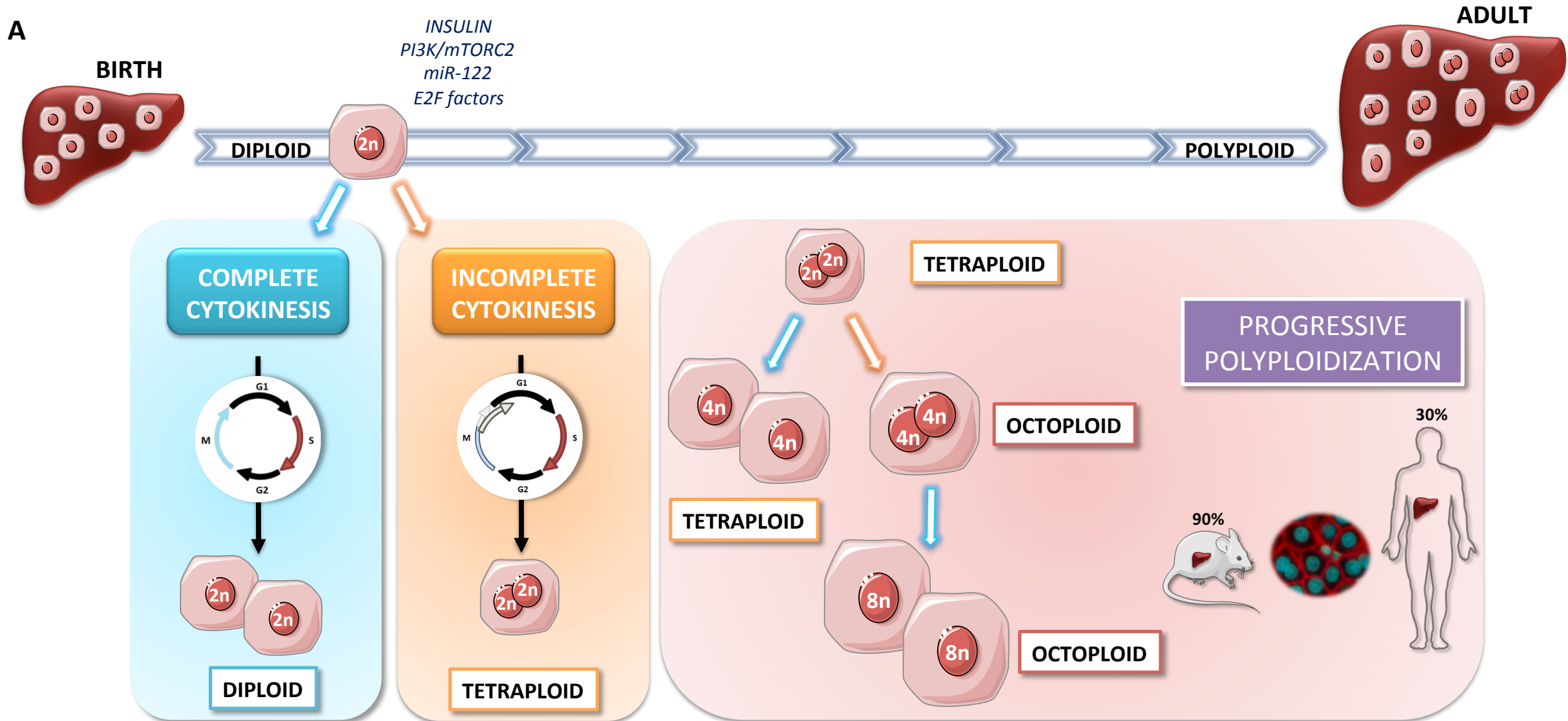
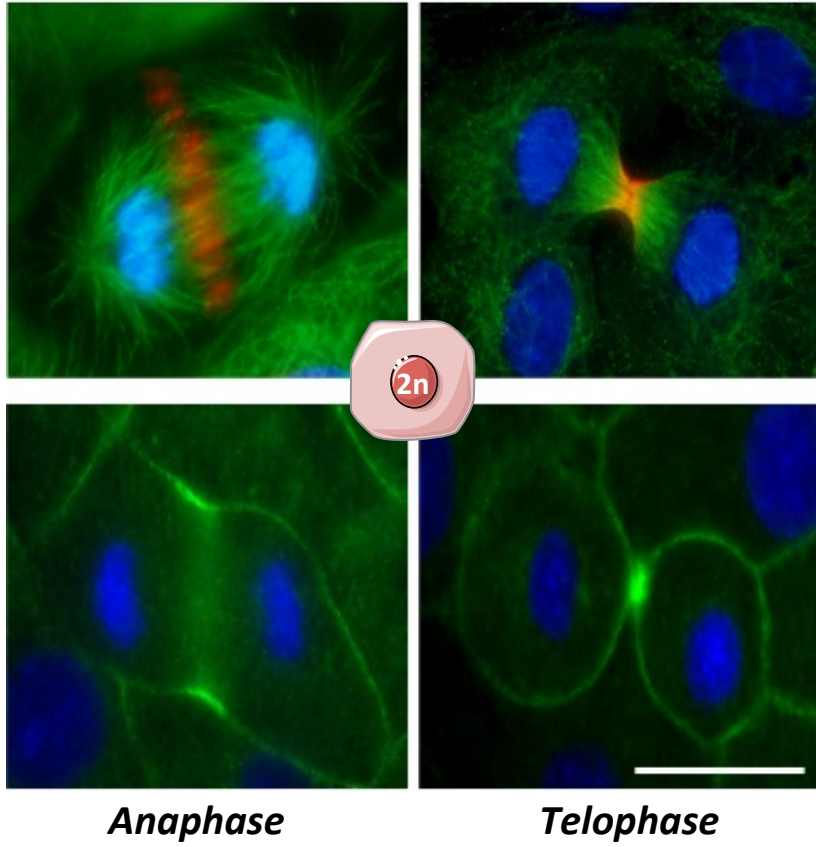


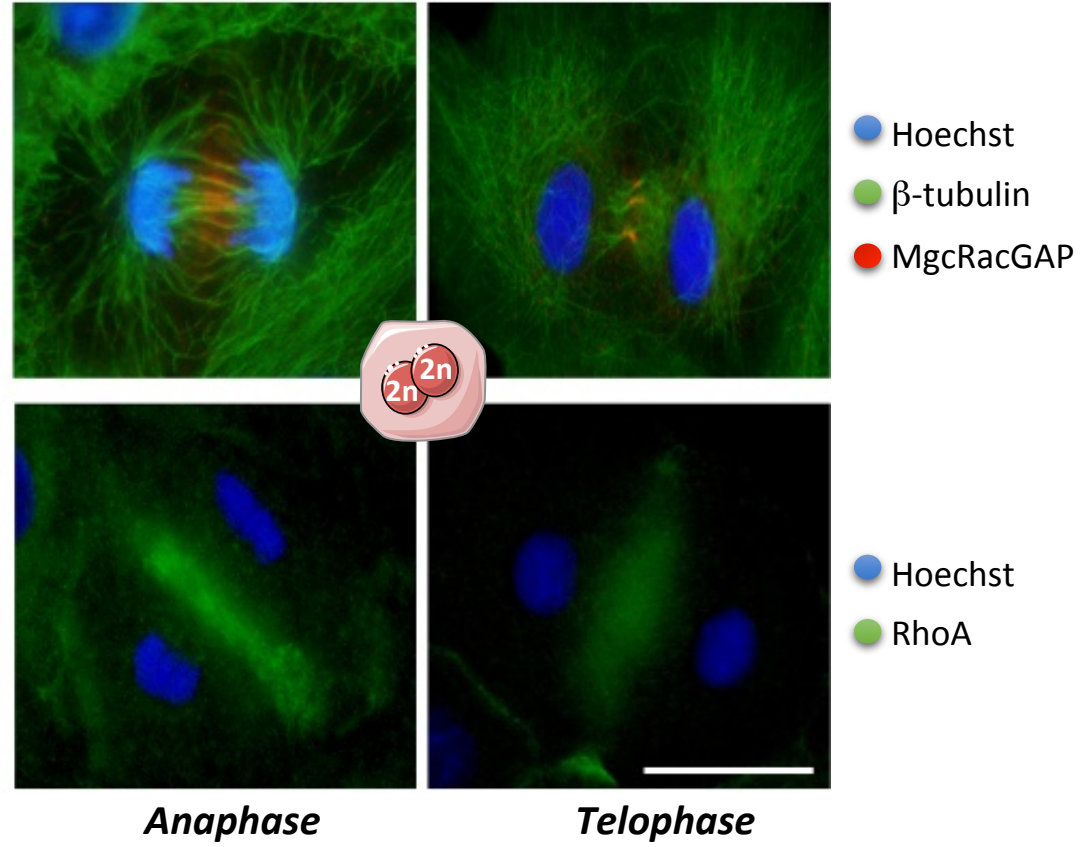
Figure 3:

B

COMPLETE CYTOKINESIS



INCOMPLETE CYTOKINESIS



- Hoechst
- β -tubulin
- MgcRacGAP

- Hoechst
- RhoA

Figure 4:

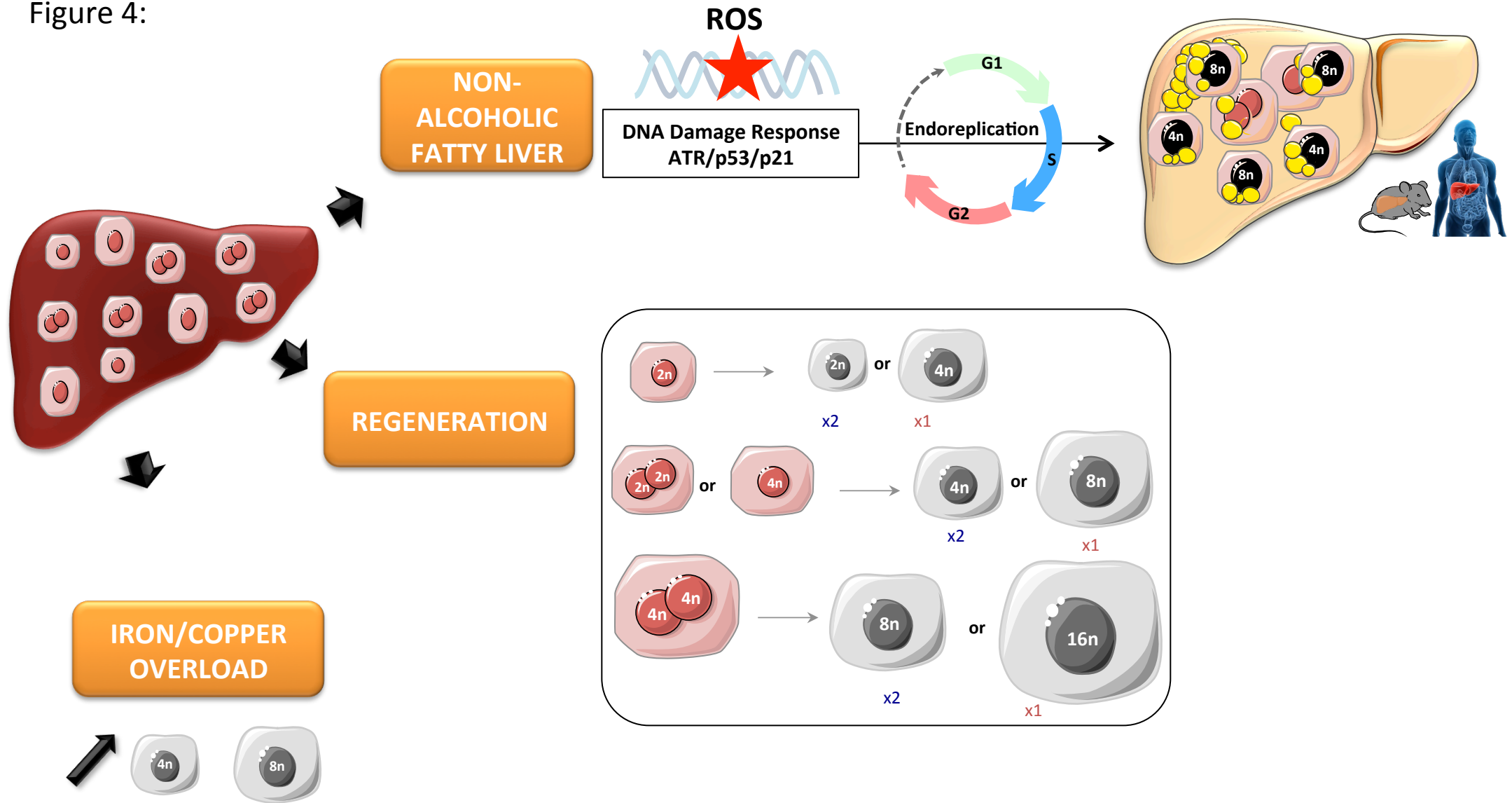


Figure 5:

