



## Type I Interferon in Children with Viral or Bacterial Infections

Sophie Trouillet-Assant, Sébastien Viel, Antoine Ouziel, Lucille Boisselier, Philippe Rebaud, Romain Basmaci, Nina Droz, Alexandre Belot, Sylvie Pons, Karen Brengel-Pesce, et al.

### ► To cite this version:

Sophie Trouillet-Assant, Sébastien Viel, Antoine Ouziel, Lucille Boisselier, Philippe Rebaud, et al.. Type I Interferon in Children with Viral or Bacterial Infections. *Clinical Chemistry*, 2020, 66 (6), pp.802-808. 10.1093/clinchem/hvaa089 . inserm-02935745

**HAL Id: inserm-02935745**

**<https://inserm.hal.science/inserm-02935745>**

Submitted on 10 Sep 2020

**HAL** is a multi-disciplinary open access archive for the deposit and dissemination of scientific research documents, whether they are published or not. The documents may come from teaching and research institutions in France or abroad, or from public or private research centers.

L'archive ouverte pluridisciplinaire **HAL**, est destinée au dépôt et à la diffusion de documents scientifiques de niveau recherche, publiés ou non, émanant des établissements d'enseignement et de recherche français ou étrangers, des laboratoires publics ou privés.

# Clinical Chemistry

**Manuscript Title:** Type I interferon in children with viral or bacterial infections

**Manuscript No:** CLINCHEM/2020/317636 [R1]

**Manuscript Type:** Article

**Date Submitted by the Author:**

**Complete List of Authors:** Sophie Trouillet-Assant, Sébastien Viel, Antoine Ouziel, Lucille Boisselier, Philippe Rebaud, Romain Basmaci, Nina Droz, Alexandre Belot, Sylvie Pons, Karen Brengel-pesce, Yves Gillet, and Etienne Javouhey

**Keywords:** Interferon-alpha; bacterial infection; emergency; febrile children; viral infection

Dear Reviewer,

Thank you for reviewing this manuscript, please remember the following:

1. The attached manuscript is confidential and should not be circulated or shared with anyone.
2. Authors of this manuscript should never be contacted until after its publication.
3. If you have a conflict of interest regarding this work, contact the editorial office immediately.
4. Be sure to review the authors' potential conflicts of interest by following the "Author Disclosures" link in your reviewer area. Contact the editorial office if you need assistance.

# Type I interferon in children with viral or bacterial infections

Sophie Trouillet-Assant<sup>1,2</sup>, Sébastien Viel<sup>3,4, 5</sup>, Antoine Ouziel<sup>6</sup>, Lucille Boisselier<sup>1</sup>, Philippe Rebaud<sup>7</sup>, Romain Basmaci<sup>8,9</sup>, Nina Droz<sup>8</sup>, Alexandre Belot<sup>4,5,10</sup>, Sylvie Pons<sup>1</sup>, Karen Brengel-Pesce<sup>1</sup>, Yves Gillet<sup>6</sup>, Etienne Javouhey<sup>6,11</sup> and Antoine study group

<sup>1</sup> Joint Research Unit Hospices Civils de Lyon-bioMérieux, Hospices Civils de Lyon, Lyon Sud Hospital, Pierre-Bénite, France.

<sup>2</sup> Virologie et Pathologie Humaine - Virpath Team, Centre International de Recherche en Infectiologie (CIRI), INSERM U1111, CNRS UMR5308, ENS Lyon, Claude Bernard Lyon ; University, Lyon, France.

<sup>3</sup> Immunology laboratory, Hospices Civils de Lyon, Lyon Sud Hospital, Pierre-Bénite, France

<sup>4</sup> Immunité innée dans les maladies infectieuses et autoimmunes team, Centre International de Recherche en Infectiologie (CIRI), INSERM U1111, CNRS UMR5308, ENS Lyon, Claude Bernard Lyon ; University, Lyon, France.

<sup>5</sup> National Referee Centre for Rheumatic and AutoImmune and Systemic diseases in childrEn (RAISE), France

<sup>6</sup> Pediatric emergency unit, Hôpital Femme Mère Enfants, Hospices Civils of Lyon

<sup>7</sup> Pediatric emergency unit, Hôpital Nord-Ouest, CH de Villefranche-sur-Saône, Gleizé, France.

<sup>8</sup> Pediatric emergency unit, AP-HP, Louis-Mourier Hospital, Colombes, France;

<sup>9</sup> Paris university, INSERM, Infection, Antimicrobiens, Modélisation, Evolution (IAME), Paris, France

<sup>10</sup> Pediatric Nephrology, Rheumatology, Dermatology Unit, Hospices Civils de Lyon, France

<sup>11</sup> EA7426 : Pathophysiology of injury-induced immunosuppression, University of Lyon

**Keywords:** Interferon- $\alpha$ ; febrile children; viral infection; bacterial infection; emergency department.

**Running title:** Type I interferon in febrile children

**Corresponding author:** Sophie Trouillet-Assant, PhD  
Joint Research Unit Hospices Civils de Lyon-bioMérieux  
Centre Hospitalier Lyon Sud, Pierre-Bénite  
69495 Lyon, France.  
Phone: + 33 (0) 472 00 37 70. [sophie.assant@chu-lyon.fr](mailto:sophie.assant@chu-lyon.fr)

**Congress presentation :** This work has been accepted for an oral communication at ECCMID congress (18 – 21 April 2020)

**Antoine study group:** Marine Mommert, Audrey Guichard, François Bartolo, Laurence Generenaz, Alexandre Pachot, Claire Capella, Laure Hees, Ellia Mezgueldi, Chadia Toumi, Coralie Bouchiat-Sarabi, Jean-sebastien Casalegno, Aurelie Portefaix, Romain Deshayes de Cambonne, Magali Perret

## Abstract

**Background:** Fever is one of the leading cause of consultation in pediatric emergency department (PED) under the age of 3 years old. Distinguishing between bacterial and viral infections etiologies in febrile patients remains challenging. We hypothesized that specific host biomarkers for viral infections, like type I-interferon (IFN), could help clinicians decisions and limit antibiotic overuse.

**Methods:** Paxgene tubes and serum were collected from febrile children (n=101) aged from 7 days to 36 months, attending PED in France with proven viral or bacterial infections. We have assessed the performance of IFN signature which is based on quantification of expression of IFN-stimulated genes using Nanostring® technology and plasma IFN- $\alpha$  quantified by digital ELISA technology (Quanterix®).

**Results:** Serum levels of IFN- $\alpha$  were below the quantification threshold (30fg/mL) for 2% (1/46) of children with proven viral infections and for 71% (39/55) of children with bacterial infections ( $p<0.001$ ). IFN- $\alpha$  levels and IFN score were significantly higher in viral compared to bacterial infection ( $p<0.001$ ). We noticed a strong correlation between serum IFN- $\alpha$  concentrations and IFN score ( $p\text{-pearson}=0.83$ ). Both serum level IFN- $\alpha$  and IFN score robustly discriminated (Area Under the Curve  $>0.91$  for both) between viral and bacterial infection in febrile children, compared to C-reactive protein (0.83).

**Conclusions:** This study revealed for the first time, that IFN- $\alpha$  is increased in blood of febrile infants with viral infections. The discriminative performance of IFN- $\alpha$  femtomolar concentrations as well as blood transcriptional signatures could show a diagnostic benefit and potentially limit antibiotic overuse.

**Clinical Trials Registration** [clinicaltrials.gov \(NCT03163628\)](https://clinicaltrials.gov/ct2/show/study/NCT03163628).

## 66 INTRODUCTION

67 Type I interferons (IFNs) are a group of cytokines that are involved in the innate antiviral  
68 response. A chronic exposure to these cytokines is also linked to the pathophysiology of a  
69 group of autoimmune diseases called type I interferonopathies (1,2). As it is secreted at very  
70 low levels (femtomolar) during disease course, detection of type I IFN in patients remains  
71 challenging and led several groups to propose an alternative strategy for the monitoring of this  
72 group of cytokines. Based on the quantification of expression of IFN-stimulated genes (ISGs),  
73 blood transcriptional signatures (IFN signature) provide an indirect estimate of the exposure  
74 of cells to type I IFN and are currently proposed for the screening of autoimmune diseases (3).  
75 In addition, the recent development of digital ELISA (Single molecular array, Simoa) allows a  
76 very sensitive measurement of type I IFN molecules in the sera of patients.

77 In children, diagnosis of viral versus invasive bacterial infection is challenging since the main  
78 symptoms at onset are often similar and restricted to fever. Misdiagnosis is responsible for  
79 inappropriate antibiotic prescription contributing to the emergence of multi-drug resistant  
80 bacteria. Thus, we hypothesized that type I IFN, the key cytokine of antiviral response, may  
81 represent a new early biomarker of viral infection which could eventually help clinicians limit  
82 antibiotic overuse. The aim of this proof-of-concept study was to assess the performance of  
83 plasma IFN- $\alpha$  and IFN score in distinguishing documented viral and bacterial infections in a  
84 prospective cohort of children attending pediatric emergency departments (PED) for fever.

## 85 METHODS

86 Participants

This is an ancillary study of the prospective multicenter protocol ANTOINE (NCT03163628 - detailed in supplementary material and Fig-S1). The ANTOINE study was registered to the French National Data Protection Agency under the number 17-168 and has been approved by an ethics committee for biomedical research in May 2017 (Comité de Protection des Personnes Sud Méditerranée II) under the number 217-R18. For each participant, written informed consent was obtained from parents or legal guardians for the participation of the febrile children in the ANTOINE study. An additional specific written consent was required for their inclusion in this present ancillary study. Febrile children aged from 7 days to 36 months attending PED for a suspicion of infection were recruited prospectively in three different hospitals based in Lyon, Villefranche sur Saone and Colombes in France. Inclusion criteria were fever for more than 6 hours (temperature  $\geq 38^{\circ}\text{C}$  between 7 days and 3 months old and  $\geq 38.5^{\circ}\text{C}$  between 3 months and 36 months old) for which the physician prescribed venipuncture for suspected severe bacterial infection before any antibiotic treatment. For this study, Paxgene® tubes and serum were collected together with clinical blood tests.

Concomitantly, blood samples from healthy volunteers (HV, n=10) were obtained from the national blood service (Etablissement Français du Sang, Lyon, France, details in supplementary material). In addition, a pediatric disease control population (n=9) with no infection nor characterized type I Interferonopathies was also selected among patients attending consultations at the National Referee Centre for Rheumatic and AutoImmune and Systemic diseases in childrEn (details in supplementary material and patients characteristics detailed available in supplementary Table1).

## Diagnostic process

The ANTOINE study was designed to evaluate the performance of several biomarkers in « real-life » condition. No other blood tests nor clinical investigation has been performed in addition to those requested by the emergency physician caring for febrile children. All patients underwent routine investigations as part of clinical care including blood count and differential, C-reactive protein, blood chemistry, blood, stools and urine cultures, and cerebrospinal fluid analysis where indicated. Chest radiographs were undertaken as clinically indicated. Bacteria culture and viral diagnostics using multiplex PCR were performed by routine microbiological laboratories of each hospital. For patients with suspicion of Respiratory Tract Infections (RTIs), specific PCRs targeting influenza virus or respiratory syncytial virus were performed systematically during seasonal peak.

According to the routine microbiology results and the clinical parameters recorded in a numerical clinical record folder (e-CRF), we retained patients with proven viral (n=46) or bacterial (n=55) infections for this study. The infections were proven on the basis of a definite identification of pathogens using routine microbiology testing. Assignment of patients to clinical groups was validated by consensus of an independent adjudication committee (cohort description in Table1).

#### IFN- $\alpha$ and IFN- $\gamma$ assay

Serum IFN- $\alpha$  concentrations (in fg/ml) were determined by single molecule array (Simoa) using a commercial kit for IFN- $\alpha$  quantification (Quanterix™, Lexington, MA, USA). The assay is based on a 3- step protocol using an HD- 1 Analyzer (Quanterix; (4) see Supplementary Methods, available at <http://onlinelibrary.wiley.com/doi/10.1002/art.40792/abstract>). IFN- $\gamma$  concentrations were measured using the simple plex kit IFN- $\gamma$  assay with the Ella platform (Protein simple©, CA, USA), according to manufacturers' instructions.

## IFN score assessment

RNA was extracted from whole blood contained in Paxgene® tubes (Kit PreAnalytix, Qiagen®, SW) and quantified by spectrophotometry assay (Nanodrop 2000, Thermo Scientific™, MA, USA). RNA integrity was then evaluated by Agilent RNA microarray (Agilent Technologies®, Santa Clara, CA, USA). The mRNA quantification of 6 ISGs (IFI27, IFI44L, IFIT1, ISG15, RSAD2, SIGLEC1) and 3 housekeeping genes (ACTB, HPRT1, POLR2A), was performed using nanostring technology (Nanostring Technologies®, WA, USA). Data standardization was obtained using the geometric average of internal control and housekeeping genes count number. Interferon score was calculated as previously described (5)

## Statistical analysis

Non-parametric Mann-Whitney tests and Spearman's correlation were calculated for all parameters using R software V3.6.1. A p-value <0.05 was considered statistically significant.

# RESULTS

Serum levels of IFN- $\alpha$  were below the quantification threshold (30fg/mL) for 2% (1/46) of children with proven viral infections and for 71% (39/55) of children with bacterial infections ( $p<0.001$ ). Median [IQR] IFN- $\alpha$  levels were significantly higher in viral (7856 [3096-62305] fg/mL) compared to bacterial infections (406 [68-3708] fg/mL,  $p<0.001$ ; Fig1-A). Similarly, the IFN score was increased 30-fold in viral infections compared to bacterial ones ( $p<0.001$ ; Fig1-B). Interestingly, no significant difference was observed between febrile children with bacterial infections and healthy volunteers or control pediatric population (Fig1-AB). There was a very strong positive correlation between serum IFN- $\alpha$  concentrations and the IFN score ( $r$ -spearman [95%CI] 0.85 [0.76;0.91] Fig1-C).



Analysis of the Area Under the Curve [AUC - 95%CI] indicated that both IFN- $\alpha$  serum level (0.930 [0.877;0.983]) and IFN score (0.908 [0.845;0.971]) robustly discriminated viral infections from bacterial ones in febrile children (Fig1-D). To evaluate if IFN- $\alpha$  could improve the diagnosis of febrile children attending PED, we assessed the performance of this biomarker in combination with a clinically validated test that is the C-reactive protein (CRP) quantification. The AUC shown in Figure 1D revealed that the ratio of the concentrations of CRP and IFN- $\alpha$  strongly improves the classification of these patients compared to CRP alone (0.936 [0.888; 0.985] versus 0.829 [0.747;0.910] respectively, Fig1-D).

In addition, knowing that ISG expression may also be driven by Type II interferon, we then evaluated whether serum IFN- $\gamma$  concentrations could be correlated with the IFN score. No relation was observed between ISG expression and Type II interferon circulating levels (r-spearman 0.18 [-0.054;0.407]; Fig1-F). Of note, no significant difference was observed between IFN- $\gamma$  serum levels of children with viral infections compared to those with bacterial ones (Fig1-E).

## DISCUSSION

Biomarkers have become key tools during the clinical decision-making process for clinicians dealing with febrile children. In PED, CRP, procalcitonin (PCT), and white blood cell count are probably the most used markers despite their poor performance in guiding antibiotic prescription in such clinical settings (6). In combination with a marker specific for bacterial infections, a specific biomarker for viral infections could improve the management of febrile children. Recent clinical studies have shown that the combination of CRP or PCT with Myxovirus resistance protein 1 (MxA) coded by the ISG *mx1*, strongly improved both clinical sensitivity and specificity for differentiating infectious etiology (7,8). Nevertheless, MxA is

an intracellular protein which prevents its dosage in serum or plasma, the method currently used for dosage of CRP or PCT in routine labs (9). Here, we have assessed by digital ELISA the performance provided by the measurement of protein IFN- $\alpha$  itself, which is secreted by immune cells after recognition of viruses and detectable in serum or plasma. This preliminary study showed for the first time that IFN- $\alpha$ , at the protein level, is increased in blood of febrile infants with viral infections. The performance of this promising biomarker needs to be confirmed in a larger cohort of febrile children with suspected and proven infections.

Moreover, the biomarkers performance reported in this study have been evaluated in the ANTOINE clinical trial performed in «real-life» condition. In our cohort, only 15% of patients have a definite infection based on the routine microbiology results and the clinical parameters. This is in line with previous reports showing that laboratory tests failed to identify a causative pathogen in over half of children with severe illness or fever leaving an important place for biomarkers to improve the management of febrile children (10,11). In our study, the microbiological investigation was not exhaustive for each patient, explaining probably the low prevalence of rhinoviruses in our cohort. Consequently, viral co-infection was not investigated/reported in our cohort. This could explain the high level of interferon alpha observed for some patients with a documented bacterial infection.

The alternative to IFN- $\alpha$  protein quantification, represented by an IFN score measurement, was also evaluated in this study. Results suggest that this ISG-based signature has the same diagnostic performance than IFN- $\alpha$  protein quantification. Fast track RNA analyses using Nanostring® or FilmArray® platforms could thus be helpful to implement this marker in routine use. Of note, the circulating IFN- $\alpha$  concentrations as well as the IFN scores reported herein in case of viral infections were in the same order of magnitude than those observed in cases of autoimmune disease such as systemic lupus erythematosus (SLE) (12). Moreover,

several recent studies suggest that IFN- $\alpha$  could be a useful marker to monitor interferonopathy disease activity, to identify patients with high risk of relapse, and to select the best candidates for anti-IFN $\alpha$  treatment (13–15). Our results suggest that viral infections could interfere and possibly be responsible of false positive diagnoses when the IFN score or IFN- $\alpha$  protein is used for the screening and the monitoring of autoimmune diseases.

Of note, recent published data demonstrated that in specific clinical diseases, such as *Mycobacterium tuberculosis* infections, ISG expression was not mediated through plasma type I IFN (16). However, in febrile infants, the results herein showed that the expression of ISG was driven by IFN- $\alpha$  and not by IFN- $\gamma$ .

According to the 68<sup>th</sup> World Health Assembly declaration, it is urgent to find effective diagnostic tools to guide optimal antibiotic use (17). Our study showed that measurement of IFN- $\alpha$  femtomolar concentrations as well as the use of an IFN score could offer new perspectives for improving diagnosis and limiting antibiotic overuse in febrile infants.

## Acknowledgements

We thank Dr. Jonathan Lopez, Pauline Desormeaux and Isabelle Mosnier (*Plateforme de Recherche de transfert en Oncologie des Hospices Civils de Lyon*) for his technical assistance on nanostring molecular biology. We thank Véréna Landel for language editing and critical reading of the manuscript.

- 229 1. Psarras A, Emery P, Vital EM. Type I interferon-mediated autoimmune diseases:  
230 pathogenesis, diagnosis and targeted therapy. *Rheumatology (Oxford)*. 2017;56:1662–  
231 75.
- 232 2. McNab F, Mayer-Barber K, Sher A, Wack A, O'Garra A. Type I interferons in  
233 infectious disease. *Nat Rev Immunol*. 2015;15:87–103.
- 234 3. Rice GI, Melki I, Frémond M-L, Briggs TA, Rodero MP, Kitabayashi N, et al.  
235 Assessment of Type I Interferon Signaling in Pediatric Inflammatory Disease. *J Clin*  
236 *Immunol*. 2017;37:123–32.
- 237 4. Rissin DM, Kan CW, Campbell TG, Howes SC, Fournier DR, Song L, et al. Single-  
238 molecule enzyme-linked immunosorbent assay detects serum proteins at subfemtomolar  
239 concentrations. *Nat Biotechnol*. 2010;28:595–9.
- 240 5. Pescarmona R, Belot A, Villard M, Besson L, Lopez J, Mosnier I, et al. Comparison of  
241 RT-qPCR and Nanostring in the measurement of blood interferon response for the  
242 diagnosis of type I interferonopathies. *Cytokine*. 2019;113:446–52.
- 243 6. van der Does Y, Limper M, Jie KE, Schuit SCE, Jansen H, Pernot N, et al.  
244 Procalcitonin-guided antibiotic therapy in patients with fever in a general emergency  
245 department population: a multicentre non-inferiority randomized clinical trial (HiTEMP  
246 study). *Clin Microbiol Infect*. 2018;24:1282–9.
- 247 7. Self WH, Rosen J, Sharp SC, Filbin MR, Hou PC, Parekh AD, et al. Diagnostic  
248 Accuracy of FebriDx: A Rapid Test to Detect Immune Responses to Viral and Bacterial  
249 Upper Respiratory Infections. *J Clin Med*. 2017;6.
- 250 8. Shirley M. FebriDx®: A Rapid Diagnostic Test for Differentiating Bacterial and Viral  
251 Aetiologies in Acute Respiratory Infections. *Mol Diagn Ther*. 2019;23:803–9.
- 252 9. Zav'yalov VP, Hämäläinen-Laanaya H, Korpela TK, Wahlroos T. Interferon-Inducible  
253 Myxovirus Resistance Proteins: Potential Biomarkers for Differentiating Viral from  
254 Bacterial Infections. *Clin Chem*. 2019;65:739–50.
- 255 10. Bleeker-Rovers CP, Vos FJ, de Kleijn EMHA, Mudde AH, Dofferhoff TSM, Richter C,  
256 et al. A prospective multicenter study on fever of unknown origin: the yield of a  
257 structured diagnostic protocol. *Medicine (Baltimore)*. 2007;86:26–38.
- 258 11. Martínón-Torres F, Salas A, Rivero-Calle I, Cebey-López M, Pardo-Seco J, Herberg JA,  
259 et al. Life-threatening infections in children in Europe (the EUCLIDS Project): a  
260 prospective cohort study. *Lancet Child Adolesc Health*. 2018;2:404–14.
- 261 12. Oke V, Gunnarsson I, Dorschner J, Eketjäll S, Zickert A, Niewold TB, et al. High levels  
262 of circulating interferons type I, type II and type III associate with distinct clinical  
263 features of active systemic lupus erythematosus. *Arthritis Res Ther*. 2019;21:107.
- 264 13. Mathian A, Mouries-Martin S, Dorgham K, Devilliers H, Yssel H, Garrido Castillo L, et  
265 al. Ultrasensitive serum interferon- $\alpha$  quantification during SLE remission identifies  
266 patients at risk for relapse. *Ann Rheum Dis*. 2019;78:1669–76.

- 267 14. Mathian A, Mouries-Martin S, Dorgham K, Devilliers H, Barnabei L, Ben Salah E, et al.  
268 Monitoring Disease Activity in Systemic Lupus Erythematosus With Single-Molecule  
269 Array Digital Enzyme-Linked Immunosorbent Assay Quantification of Serum  
270 Interferon- $\alpha$ . *Arthritis & Rheumatology* (Hoboken, NJ). 2019;71:756–65.
- 271 15. Melki I, Devilliers H, Gitiaux C, Bondet V, Duffy D, Charuel J-L, et al. Anti-MDA5  
272 juvenile idiopathic inflammatory myopathy: a specific subgroup defined by differentially  
273 enhanced interferon- $\alpha$  signalling. *Rheumatology* (Oxford). 2019;
- 274 16. Llibre A, Bilek N, Bondet V, Darboe F, Mbandi SK, Penn-Nicholson A, et al. Plasma  
275 Type I IFN Protein Concentrations in Human Tuberculosis. *Front Cell Infect Microbiol*.  
276 2019;9:296.
- 277 17. WHO. Antimicrobial resistance: global report on surveillance.,. WHO Library  
278 Cataloguing-in-Publication Data. 2014;
- 279

Infection type	Bacterial	Viral
Population. n (%)	55 (54.5%)	46 (45.5%)
Male. n (%)	20 (36.4%) <sup>#</sup>	27 (58.7%) <sup>#</sup>
Age (days). median [range]	396 [10-1094]*	121 [10-903]*
Duration of fever (hours). n (%) <sup>#</sup>		
<12	4 (7.2%)	11 (23.9%)
[12-24]	12 (21.8%)	15 (32.6%)
>24	39 (70.9%)	20 (43.5%)
CRP (µg/mL). median [range]	99.0 [0.24-571.2]*	14.6 [0.6-198.0]*
Pathogens, n (%)	<i>Escherichia coli</i> 35 (63,6%) <i>Streptococcus sp.</i> 6 (10,1%) <i>S. pneumoniae</i> 5 (9,1%) <i>S. pyogenes</i> 1 (1,8%) <i>Staphylococcus aureus</i> 5 (9,1%) <i>Salmonella sp.</i> 4 (7,3%) <i>S. enteridis</i> 2 (3,6%) <i>S. typhimurium</i> 2 (3,6%) <i>Mycoplasma sp.</i> 2 (3,6%) <i>M. pneumoniae</i> 1 (1,8%) <i>Fusobacterium necrophorum</i> 1 (1,8%) <i>Haemophilus influenzae</i> 1 (1,8%) <i>Proteus mirabilis</i> 1 (1,8%)	Respiratory syncytial virus 13 (28,9%) Influenza virus 9 <sup>\$</sup> (19,6%) <sup>\$</sup> 1 co-infection influenza virus / norovirus Rotavirus 7 (15,6%) Picornavirus 10 (21.7%) 7 Enterovirus (15.6%) 3 not specified (6.7%) Epstein-Barr virus 3 (6,7%) Adenovirus 2 (4,4%) Herpes Simplex virus 1 (2,2%) Measles morbillivirus 1 (2,2%)

Table 1 – Description of febrile patients

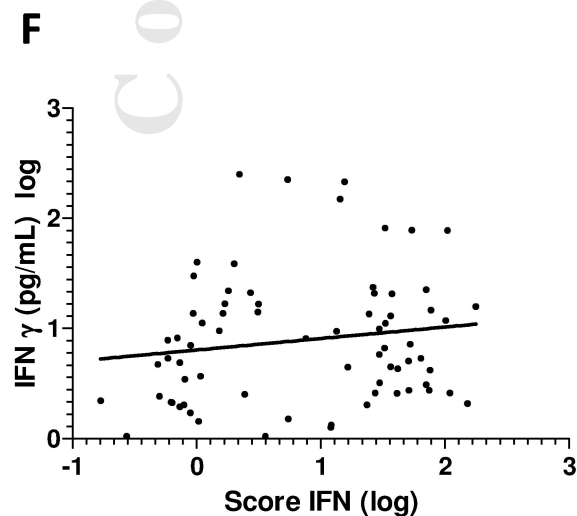
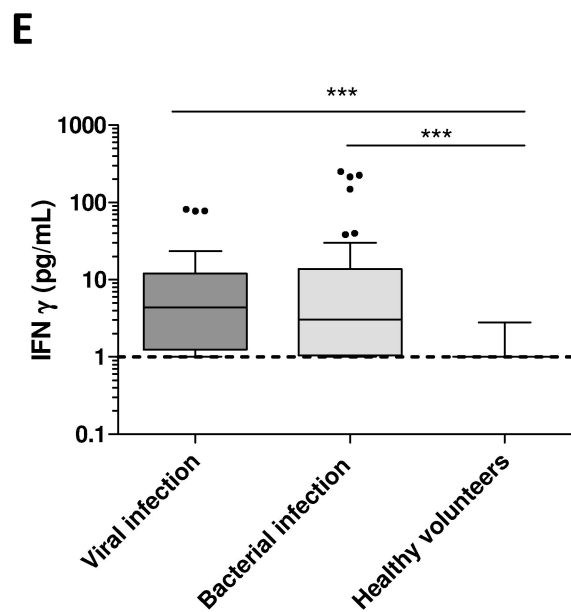
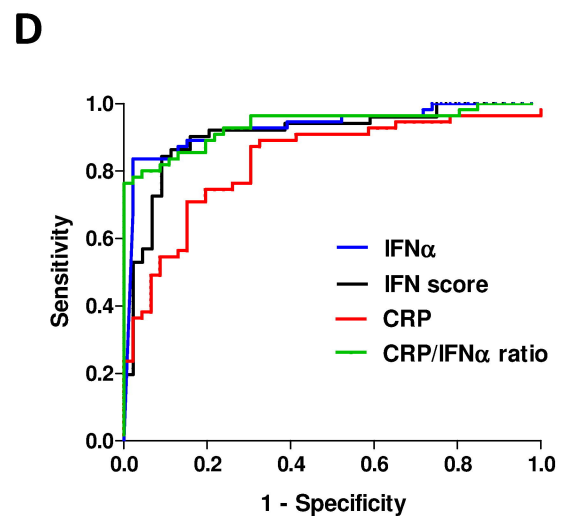
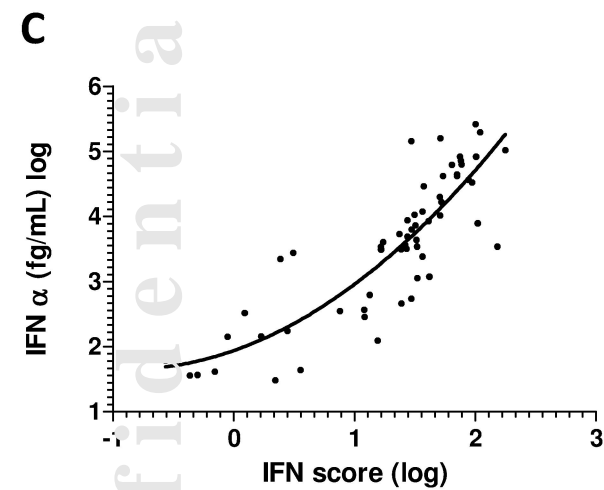
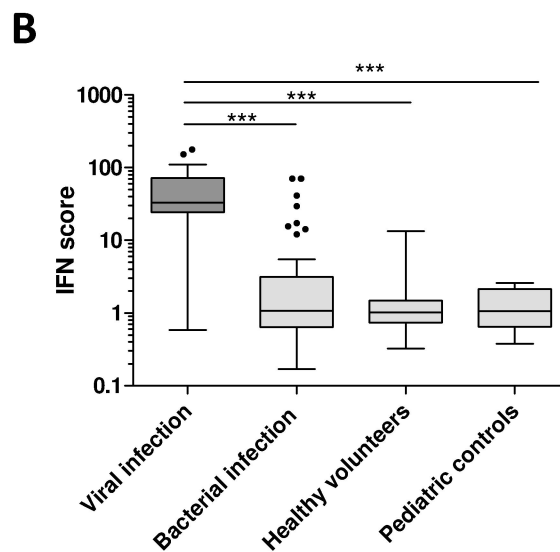
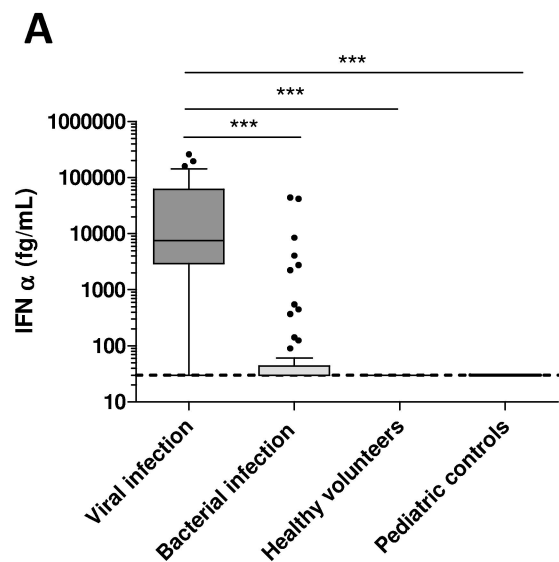
\* t-test revealed a statistically significant difference between the two groups p<0.01. # Chi<sup>2</sup> test revealed a statistically significant difference between the two groups p<0.01

32

33

34

Confidential





**Figure 1 legend – Type I and II IFN quantification in febrile children with proven viral or bacterial infection**

**A.** IFN- $\alpha$  (fg/mL) measured by digital ELISA (SIMOA®) **B.** IFN score as defined by a 6 Interferon Stimulated Genes transcriptional signature quantified using nanostring technology and obtained from Paxgene tubes of febrile infants with proven viral (n=46) or bacterial (n=55) infections attending pediatric emergency departments or from healthy controls (n=10) or from pediatric controls (n=9). Limit of quantification is indicated by the dotted lines. The IFN- $\alpha$  kit (Quanterix™, Lexington, MA, USA) used for this study detect IFN- $\alpha$  type 2. **C.** Spearman correlation between IFN score and serum IFN- $\alpha$  concentrations. **D.** Receiver operating characteristic curve of CRP, IFN score, serum IFN- $\alpha$  and CRP/ IFN- $\alpha$  ratio concentrations to discriminate between viral and bacterial infections. **E.** IFN- $\gamma$  (pg/mL) measured in serum, one patient with bacterial infection had not sufficient blood volume and IFN- $\gamma$  measurement have not been performed. **F.** Spearman correlation between IFN score and serum IFN- $\gamma$  concentrations. **A-B-E.** Box-and-whiskers plots represent the median and inter-quartile range, whiskers are calculated by the Tukey's method. Mann-Whitney U test \*\*\*P<0,001 – IFN (interferon); CRP (C-reactive protein)