



**HAL**  
open science

## Sera of elderly obstructive sleep apnea patients alter blood–brain barrier integrity in vitro: a pilot study

Anne-Cloé Voirin, Sébastien Celle, Nathalie Perek, Frédéric Roche

### ► To cite this version:

Anne-Cloé Voirin, Sébastien Celle, Nathalie Perek, Frédéric Roche. Sera of elderly obstructive sleep apnea patients alter blood–brain barrier integrity in vitro: a pilot study. *Scientific Reports*, 2020, 10 (1), pp.11309. 10.1038/s41598-020-68374-8 . inserm-02918977

**HAL Id: inserm-02918977**

**<https://inserm.hal.science/inserm-02918977v1>**

Submitted on 21 Aug 2020

**HAL** is a multi-disciplinary open access archive for the deposit and dissemination of scientific research documents, whether they are published or not. The documents may come from teaching and research institutions in France or abroad, or from public or private research centers.

L'archive ouverte pluridisciplinaire **HAL**, est destinée au dépôt et à la diffusion de documents scientifiques de niveau recherche, publiés ou non, émanant des établissements d'enseignement et de recherche français ou étrangers, des laboratoires publics ou privés.



OPEN

# Sera of elderly obstructive sleep apnea patients alter blood–brain barrier integrity in vitro: a pilot study

Anne-Cloé Voirin<sup>2,3</sup>, Sébastien Celle<sup>1,3</sup>, Nathalie Perek<sup>2,4</sup> & Frédéric Roche<sup>1,3,4</sup>✉

Obstructive sleep apnea syndrome (OSAS) is characterized by repeated episodes of hypoxia during the night. The severity of the disorder can be evaluated using an apnea–hypopnea index (AHI). The physiological consequences are mainly cardiovascular and neuronal dysfunctions. One hypothesis to explain such associated neurological disorders is disruption of the blood–brain barrier (BBB), which protects the brain from endovascular cytotoxic compounds. We selected two subgroups of volunteers from the PROOF cohort study (France), a group of patients suffering newly diagnosed severe OSAS (AHI > 30/h) and a group showing no sleep apnea (AHI < 5/h). We exposed a human in vitro BBB model of endothelial cells (HBEC-5i) with sera of patients with and without OSAS. After exposure, we measured the apparent BBB permeability as well as tight junction and ABC transporter expression using whole cell ELISA. We showed that after incubation with sera from OSAS patients, there was a loss of integrity in the human in vitro BBB model; this was reflected by an increase in permeability (43%;  $p < 0.001$ ) and correlated with a 50% and 40% decrease in tight junction protein expression of ZO-1 and claudin-5, respectively. At the same time, we observed an upregulation in Pgp protein expression (52%) and functionality, and a downregulation in BCRP expression (52%). Our results demonstrated that severe BBB disorder after exposure to sera from OSAS patients was reflected by an opening of the BBB.

Obstructive sleep apnea syndrome (OSAS) is a growing public healthcare issue in the world. It is a sleep disorder affecting 17–22% of the population aged 30–60 year<sup>1</sup>, with a high prevalence among the elderly and overweight subjects<sup>2</sup>. Upper airway collapse occurs repeatedly during sleep in such patients. This collapse involves many mechanisms such as intermittent hypoxia, activation of systemic inflammatory processes, and activation of the sympathetic nervous system. All these mechanisms lead to an increased risk of cerebrovascular and cardiovascular morbidity<sup>3,4</sup>. Recently, it has been shown that neurological consequences of obstructive sleep apnea (OSA) are similar to those found in Alzheimer's disease. Thus OSA would be one of the possible causes of Alzheimer's disease, with similar biomarkers for both diseases<sup>5–7</sup>. One hypothesis is that chronic intermittent hypoxia and sleep fragmentation might release several compounds inducing a neurotoxicity, which help to contribute to the progression of neurodegeneration. Nowadays, patients with OSAS are treated with a continuous positive pressure mask, and despite its effectiveness it remains sometimes poorly tolerated by patients<sup>8,9</sup>. This is why it is necessary to evaluate alternative or complementary therapies to limit these associated risks. A large number of studies focused their aim on the mechanisms linking sleep apnea to the deleterious effects of the cardiovascular system. Yet, cerebrovascular consequences of OSAS are less described and less understood. However, one hypothesis proposed to explain the mechanisms involved in sleep apnea is a disruption in one of the protective structures of the brain, i.e., the blood–brain barrier (BBB)<sup>10</sup>.

The BBB is a physical and metabolic barrier that separates blood flow from the central nervous system (CNS) compartment which regulates the passage of compounds and nutrients. This barrier would be disrupted under

<sup>1</sup>Clinical Physiology, University Hospital (CHU), Saint-Étienne, France. <sup>2</sup>INSERM, SAINBIOSE U1059, UJM-Saint-Etienne, Université de Lyon, Saint-Étienne, France. <sup>3</sup>EA4607 SNA EPIS, Faculté de médecine Jacques Lisfranc, Université de Lyon, Campus Santé Innovation, 10 rue de la Marandière, 42270 Saint-Priest-en-Jarez, France. <sup>4</sup>These authors contributed equally: Nathalie Perek and Frédéric Roche. ✉email: frederic.roche@univ-st-etienne.fr

OSAS, leading to a cognitive deficit in patients associated with grey matter alteration. This barrier is composed of endothelial cells, astrocytes, pericytes, and neurons; with the whole representing the neurovascular unit<sup>11,12</sup>. Endothelial cells are the main cells that restrict and control the paracellular passage of compounds to the inside and outside of the brain. These properties are enabled by the presence of tight junctions (TJs) and transendothelial transporters such as ATP binding cassette (ABC) transporters<sup>13</sup>. The main transporters involved in transendothelial transport are energy-dependent and act as efflux transporters. They belong to the ABC transporter family, such as P-glycoprotein protein (Pgp) or breast cancer resistance protein (BCRP). In vitro BBB models are suitable to study BBB alteration under pathophysiological conditions. The ABC efflux proteins are essential for the barrier and particularly in the brain's delivery of therapeutic drugs. Under a physiological state, the BBB is generally regarded like a mechanism which protects the brain. Nonetheless, in a number of pathologies, BBB disruption and change in ABC transporter expression have been suggested as a forecast factor in the progression of these diseases<sup>14</sup>. Loss of BBB integrity involves the brain being exposed to potentially cytotoxic concentrations of molecules due to the dysfunction of ABC transporters. This leakage into the circulation may disrupt brain homeostasis and adversely affect neuronal signaling.

We have developed in our laboratory a relevant human BBB model composed of an endothelial cell line (HBEC-5i)<sup>15</sup>, which is grown with a conditioned astrocyte culture medium without adjuvant. It has been shown that astrocytic cells have the ability to induce and maintain close junctions between endothelial cells<sup>16,17</sup>. This model can be used routinely in a laboratory. Our model presents many advantages such as stability during five days, which may allow are view of long term effects of therapeutic agents or physiopathological conditions. Our model could be used as a suitable tool in preclinical screening studies for assessing the permeability of human endothelial cells from the BBB.

In our clinical sleep research laboratory, we have set up a patient cohort composed of healthy elderly subjects (men or women;  $\geq 65$  years old), who had given their consent to participate in a clinical research program (Prognostic indicator of cardiovascular and cerebrovascular events (PROOF) cohort study). The whole population had been longitudinally evaluated using nocturnal polygraphy, allowing calculation of apnea plus hypopnea index (AHI), and a biological sample was collected to better evaluate blood biomarkers of sleep-related breathing disorders. From this cohort, we selected two groups of volunteers: a group of patients with severe OSAS, i.e., with an AHI  $> 30$ /h and a group without sleep apnea with an AHI  $< 5$ /h. These patients did not show other neurologic, cardiovascular or metabolic disorders other than OSAS for the severe OSAS group.

The aim of our present study was to evaluate the effect of sera from severe OSAS patients sera on an in vitro endothelial cell HBEC-5i model. The integrity of endothelial cells was assessed by apparent permeability measurements with sodium-fluorescein (Na-Fl)<sup>18,19</sup> and expression of three TJ proteins (zonula occludens-1 (ZO-1), claudin-5 and occludin), that were well represented in the literature on BBB disruption in neurological disease<sup>20</sup>. Then, evaluation of transendothelial transport was also investigated for expression and activities of two efflux transporters (Pgp and BCRP). These two efflux pumps are particularly well represented in our model and were associated with cognitive deficit such as in Alzheimer's disorders linked to BBB disruption<sup>14,21</sup>. Thus improved understanding of the molecular and cellular mechanisms that promote potential BBB disruption in OSAS, and a posteriori lead to CNS dysfunction (i.e., cognitive dysfunction, accelerated neurodegeneration), is required in order to develop therapeutic strategies.

## Results

**Subjects.** We selected elderly patients with severe OSAS (AHI  $> 30$ ) or no evidence of OSAS (normal: AHI  $< 5$ ). The data collected for these subjects did not allow us to observe any difference, except for their AHI and gender which will be further discussed, their hypoxemic load, and their repeated autonomic activation during sleep (Table 1).

**Impact of sera on HBEC-5i model.** Optimal time and concentration of sera exposure have been previously validated to avoid cytotoxicity (data not shown). Our results showed that a 48-h incubation time and 10% sera concentration represented optimal culture conditions. These conditions were chosen for all of our subsequent experiments.

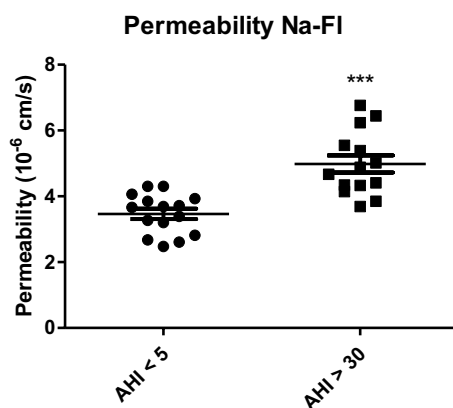
**Apparent permeability measurement.** After 48 h of incubation with the sera, the apparent permeability measurement performed with Na-Fl showed a significant increase in Na-Fl permeability for severe OSAS patients (AHI  $> 30$ ) compared to patients without OSAS (AHI  $< 5$ ). We observed an increase in permeability coefficient from  $3.46 (\pm 0.15) \times 10^{-6} \text{ cm s}^{-1}$  to  $4.98 (\pm 0.26) \times 10^{-6} \text{ cm s}^{-1}$  (Fig. 1).

**TJ protein expression by whole cell ELISA.** Expression of TJ proteins (ZO-1, occludin, and claudin-5) were assessed after 48 h of exposure to sera from AHI  $< 5$  versus serum from AHI  $> 30$  (Fig. 2). Expression of ZO-1 and claudin-5 significantly decreased in OSAS patients with an AHI  $> 30$  compared to patient with an AHI  $< 5$  (all  $p = 0.001$ ). Expressions decreased by 53% for ZO-1 and by 40% for claudin-5. There was no significant difference in the expression of occludin, which was  $3.07 \pm 0.4 \mu\text{g mL}^{-1}$  for AHI  $> 30$  and  $2.34 \pm 0.31 \mu\text{g mL}^{-1}$  for AHI  $< 5$ .

**Impact of sera on transendothelial transport.** ABC efflux transporters proteins (Pgp, BCRP) expression by whole cell ELISA. Expression of ABC transporter proteins (BCRP and Pgp) in our in vitro HBEC-5i model were evaluated after 48 h of exposure to sera from AHI  $< 5$  versus sera from AHI  $> 30$ . Pgp expression significantly increased by 52% with AHI  $> 30$  compared to patients with AHI  $< 5$  in contrast to BCRP expression, which significantly decreased by 52% for a serum-treated model of patients with AHI  $> 30$  versus with AHI  $< 5$  (Fig. 3).

Variables	Whole population	OSAS	No OSAS	<i>p</i>
Age (y)	75.9±0.2	75.9±0.4	75.9±0.2	0.87
Sex (M/F)	15/14	11/3	4/11	<0.001
AHI (h <sup>-1</sup> )	19.1±3.2	38.9±1.7	3.5±0.4	<0.001
ODI (h <sup>-1</sup> )	13.0±2.4	24.4±2.6	2.4±0.5	<0.001
SaO <sub>2</sub> min (%)	88.4±0.9	85.3±1.4	91.3±0.6	<0.001
SaO <sub>2</sub> moy (%)	94.2±0.3	93.6±0.5	94.8±0.3	0.04
%time SaO <sub>2</sub> <90%	4.4±1.5	8.0±2.5	1.1±1.1	0.01
Total cholesterol (g L <sup>-1</sup> )	2.2±0.1	2.2±0.1	2.2±0.1	0.9
HDL cholesterol (g L <sup>-1</sup> )	0.6±0.0	0.6±0.0	0.6±0.0	0.8
LDL cholesterol (g L <sup>-1</sup> )	1.3±0.1	1.3±0.1	1.3±0.1	0.9
Triglycerides (g L <sup>-1</sup> )	1.3±0.1	1.3±0.1	1.3±0.2	0.9
Fasting blood glucose (g L <sup>-1</sup> )	1.0±0.4	1.0±0.5	1.0±0.3	0.3
Hypertension medication (Y/N)	15/9	6/5	9/4	0.5
24-h mean SBP (mmHg)	117.6±2.4	117.7±3.4	117.5±3.5	1.0
24-h mean DBP (mmHg)	72.2±1.5	71.2±1.8	73.2±2.4	0.5

**Table 1.** Descriptive characteristics of the population selected for this study and from the PROOF cohort study. AHI: apnea plus hypopnea index; ODI: oxyhemoglobin desaturation index; SaO<sub>2</sub>: oxyhemoglobin saturation; HDL: high density lipoprotein; LDL: low density lipoprotein; SBP: systolic blood pressure; DBP: diastolic blood pressure.

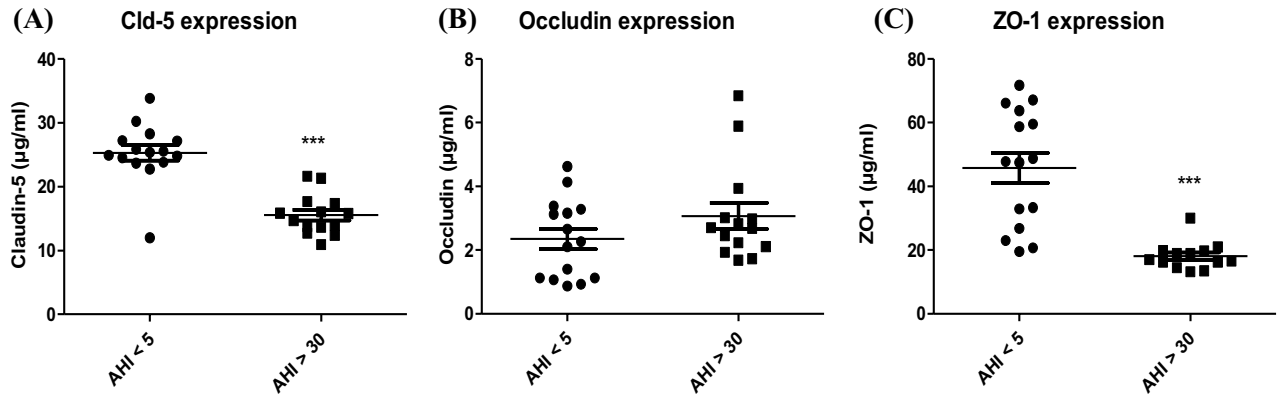


**Figure 1.** Membrane permeability measurement of HBEC-5i after 48 h of 10% sera from obstructive sleep apnea syndrome (OSAS) patients. OSAS patient AHI > 30 versus control sera AHI < 5. Results are represented as mean value ± s.e.m (n = 15). \*\*\**p* < 0.001, AHI < 5 vs. AHI > 30. Na-Fl: sodium fluorescein; AHI: apnea-hypopnea index.

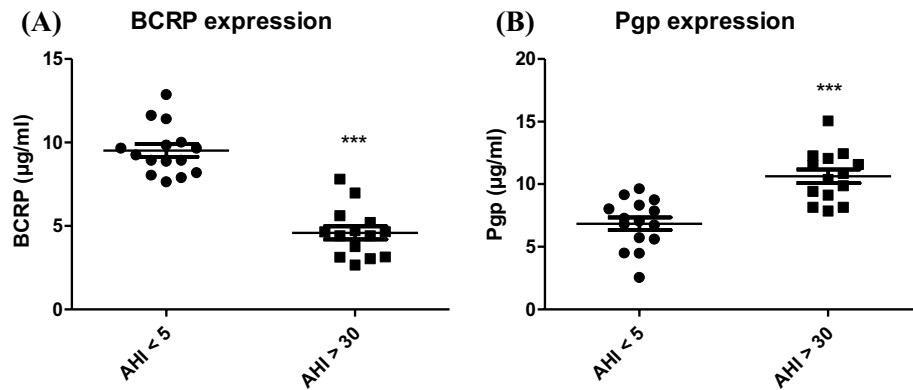
**ABC transporter functionality tests.** Functionality of ABC transporters were evaluated by studying a fluorescent substrate (rhodamine-123) transport of the ABC efflux transporters (Pgp and BCRP). We studied the accumulation rate (i.e., a percentage of accumulation) of this substrate within cells with or without Pgp or BCRP specific competitive inhibitors, i.e., verapamil and KO143, respectively. First we observed a tendency for patients with sleep apnea (AHI > 30) to have a decrease of 23% in rhodamine-123 accumulation (*p* = 0.0571), suggesting that ABC efflux was more functional in severe OSA patients. In order to see which efflux pump, Pgp or BCRP, was most involved, we used specific competitive inhibitors. In the presence of verapamil, the competitive Pgp inhibitor, we observed an increase of 55% and 40% in rhodamine-123 accumulation for patients with AHI < 5 and AHI > 30, respectively, indicating an important activity of the Pgp efflux pump. In contrast, the use of KO143, a BCRP-specific inhibitor, showed a decrease of 43% in accumulation of rhodamine-123 that was related to the under expression of this protein in AHI patients > 30 (Fig. 4). All these results therefore showed a positive regulation of Pgp, with a more important activity in endothelial cells incubated with sera from severe OSAS patients.

## Discussion

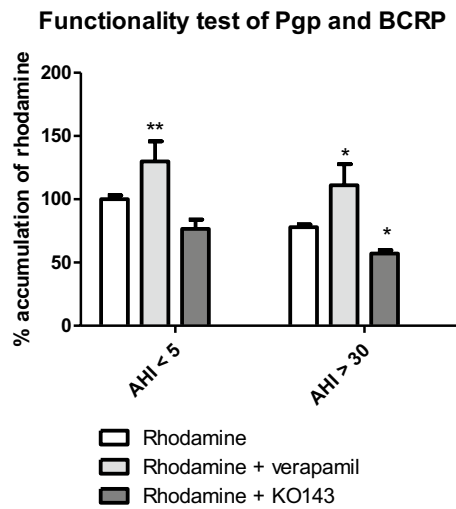
OSA is often associated with neurological deleterious consequences in the elderly population. One of the hypotheses put forward by Lim and Pack consists of a BBB disruption provoked by several neurotoxic compounds released and circulated in blood as a consequence of intermittent hypoxia, sleep fragmentation, and also by



**Figure 2.** Expressions of Claudin-5 (A), occludin (B) and ZO-1 (C) after exposure of cells to 10% serum for 48 h. Results are represented as mean value  $\pm$  s.e.m (n = 15). \*\*\* $p < 0.001$ , AHI < 5 vs. AHI > 30. Differences in occludin expression between the two groups was not significant. AHI: apnea-hypopnea index.



**Figure 3.** Expressions of BCRP (A) and Pgp5 (B) after exposure of cells to 10% serum for 48 h. Results are represented as mean value  $\pm$  s.e.m (n = 15). \*\*\* $p < 0.001$ , AHI < 5 vs AHI > 30. AHI: apnea-hypopnea index.



**Figure 4.** Functionality of rhodamine-123 transport by accumulation test with or without specific inhibitors of Pgp (verapamil) and BCRP (KO143) after exposure of cells to 10% serum for 48 h. Results are represented as mean value  $\pm$  s.e.m (n = 15). \*\* $p < 0.01$  between rhodamine and rhodamine + verapamil, \* $p < 0.05$  rhodamine versus rhodamine + verapamil or KO143. AHI: apnea-hypopnea index.

associated inflammation<sup>22</sup> or an associated metabolic disorder. However, today there is evidence of this hypothesis regarding the alteration of the BBB following an OSA. Indeed, the imaging data showed that brain regions near the hippocampus had a volume that could either be increased or decreased. The explanation for an increased volume would be inflammation and activation of glial cells, while a decrease would suggest cell loss leading to neurodegenerative damage<sup>23</sup>. In addition, other studies described a decrease in OSA patients in entropy measurement that indicates an acute change in cerebral tissue and links it to the rupture of the BBB<sup>24,25</sup>.

However, the BBB is an essential structure for the protection of the CNS, limiting exchanges between the blood circulation and the brain through transporters and TJ proteins<sup>26,27</sup>. TJ proteins act as a physical barrier that regulates paracellular transport; this specialized phenotype is fundamental for the protection of the brain. Moreover, efflux ABC family pumps are a protective mechanism that actively efflux compounds outside the endothelial cell and hence inside the bloodstream. These proteins act like a transendothelial barrier that reduces the exposure of the CNS to xenobiotics. Since the structural and functional integrity of transporters and TJ proteins are necessary for an intact BBB, alteration of these components is a key event in the BBB's impairment. Moreover, in several pathologies it has been shown that a dysregulation of ABC transporters such as Pgp and BCRP contribute to a pharmaco-resistant phenotype as in Alzheimer's disease and epilepsy<sup>28,29</sup>.

Nowadays, patients with severe OSAS are mainly treated with a continuous positive pressure airway pressure that remains sometimes poorly tolerated by patients<sup>9</sup>. It is crucial to find therapies to limit neurological associated risks. However, there are no predictive tests to evaluate deleterious effect of sleep apnea on the integrity of the BBB and more precisely on endothelial cells that are a key element to form the protective barrier. In our laboratory, we have developed a human BBB model, composed of HBEC-5i endothelial cells, in cooperation with conditioned media from human astrocytes. In this study, we have screened the effect of sera from patients on TJ proteins and ABC transporters.

We have evaluated the effect of sera on TJ proteins and ABC transporters. Sera from patients were selected with and without OSAS from the PROOF cohort, a cohort with an extensive phenotype evaluation of sleep disorders. This is the first time that a screening of sleep apnea sera from patient effects has been realized on such an endothelial model of human BBB. This work shows that the HBEC-5i model may be used as a predictive model of cerebrovascular consequences related to the release of cytotoxic compounds in many diseases. Our results showed a significant increase in the apparent permeability following exposure with sera (Fig. 2), which showed that the BBB lost some of its physical properties and that small molecules such as Na-Fl can cross the cell barrier. This loss of permeability was evaluated by the expression of TJ proteins, since they are responsible for the physical characteristics of the BBB. Sera from patients with AHI > 30 significantly decreased the expression of ZO-1 and claudin-5 proteins, while occludin expression remained unchanged (Fig. 3). ZO-1 and claudin-5 being the main actors in the development and maintenance of the BBB<sup>30</sup>, and a change in their expression or location led to a dysfunction of the BBB. Nevertheless, in accordance with other studies, our work showed that occludin does not play a major role in maintaining the barrier but is linked to the regulation of calcium through the BBB<sup>31</sup>. Prior studies have demonstrated a loss of expression of ZO-1 in *in vitro* human and mouse models examining the effects of amyloid beta protein on the BBB, suggesting that this process may occur in Alzheimer's disease<sup>32,33</sup>. Therefore, our results showing modification of the expression of the TJs are similar to those prior findings which implied loss of permeability in neurodegenerative disease<sup>32,34</sup>. The role of claudin-5 in such BBB dysfunction has been less recognized, but alteration of such TJ protein expression could be also interpreted as a complementary frailty of the physical properties of the barrier<sup>35</sup>.

In a second part, we evaluated the effect of sera on efflux pumps (ABC transporters), which efflux potentially cytotoxic compounds. These transporters are dysregulated in case of neurodegenerative disease. We showed an increase in Pgp and a decrease in BCRP expression (Fig. 4), which are data found in the literature, especially during an inflammatory stress process<sup>36</sup> or after intermittent hypoxia stress. The activity of efflux pumps, evaluated from the accumulation of a fluorescent substrate, showed that sleep apnea patient serum provoked an increase in ABC efflux pump activity. The results obtained after competitive inhibition is in line with a Pgp overexpression and functionality rather than BCRP protein. BCRP is under expressed<sup>36–39</sup>.

Few studies until now have worked on the possibility to evaluate the effect of sera from patients on endothelial cell openings and the functionality of their ABC transporters. Our results are important as it has demonstrated that sera from OSAS patients affect endothelial cells and many mechanisms seem to be involved to induce a BBB breakdown. One working hypothesis is the systemic inflammation in a chronic hypoxic setting. Indeed, a link has been shown between systemic inflammation and OSA, with an increase in pro-inflammatory cytokines during sleep apnea<sup>40–42</sup>. Nadeem et al. and others showed a higher pro-inflammatory cytokine concentration for patients with sleep apnea syndrome<sup>41,43</sup>. This inflammation is known to have a deleterious effect on the integrity of the BBB, and it plays a role in ABC transporter regulation<sup>36,44,45</sup>. However, such pro-inflammatory interleukin activation is not constant in OSAS patients and more particularly in adults and in the elderly. Furthermore, microparticles described in OSAS sera patients could lead by themselves to endothelial dysfunction at the brain vascular scale and could alter BBB permeability, like as found in an exosome<sup>46,47</sup>. Indeed, serum factors are not yet identified, and inflammation remains a hypothesis. Other pathways such as excessive vessel shear stress could also be involved in disruption of the BBB<sup>48</sup>. The discovery of the opening of the BBB after sera exposure suggests that this opening may be partly responsible for cognitive deficits; but another track of exploration is that fluid movements generated by the opening of this barrier could be involved in some cases of increased intracranial pressure. In this sense, it would be interesting to study the entry and flow processes of cephalo rachidien liquid, including alterations in aquaporins<sup>49</sup>. Thus, the different pathways involved in OSAS leads to the release of many molecules such as interleukins, VEGF, elements of the oxidative stress pathway, or exosome vesicles that could be found in sera; and it would be interesting to see if these hypotheses are true in our sera of elderly patients.

Our study has some limitations. First of all, the "human" *in vivo* BBB function in OSAS is not well (and not easily) evaluated. Our observations on a BBB *in vitro* model could not be directly extrapolated. However, several



authors using brain MRI methods proposed an alteration of the BBB function in OSAS with an increased in permeability of the barrier in hypoxic conditions<sup>50</sup>. The impact of OSAS on brain volumes in several critical brain areas is highly probable according to VBM methodology, and astrocyte pre-activation has to also be demonstrated in a mouse model of chronic intermittent hypoxic exposure, suggesting a deleterious cellular message coming from the intravascular compartment in OSAS. Secondly, the concentration of sera in the cell culture nutritive fluid could not represent the real concentration of cytotoxic components in patients suffering OSAS. In this study, only 10% was mixed with medium (without fetal bovine serum<sup>51</sup>), but in physiological condition we would find 100% of the sera's components. Moreover, exposure to repeated hypoxemic stress could lead to a chronic adaptation of the "physiological" endothelial cells which limit the permeability. We could underline here that we tested a short exposure to sera components. The model used has a permeability plateau during which experiments are possible and which limits the possible duration of exposure. However, our results demonstrated a deleterious impact of sera of severe OSAS on endothelial function. Thirdly, there are biases in the selection of patients in our preliminary study. We used only an elderly patient population, which are susceptible to more comorbidity factors. Despite the use of an elderly population, which has a higher prevalence for this syndrome, the study of a younger population would also bring its share of knowledge.

In addition, the male:female ratio in our study is a bias. Indeed there are more males than females with OSAS. This can lead to an interpretation bias and is explained by the fact that diagnoses in females are often under evaluated<sup>52</sup> and that the prevalence of OSAS is higher in males<sup>53</sup>. Nevertheless, studies have shown a gender influence, such as on hippocampal volume in OSAS<sup>23</sup> or greater cortical lesions in women with OSAS<sup>54</sup>. Consequently, sex ratio is a point that will have to be taken into account later on.

## Conclusion

In conclusion, we demonstrated for the first time that blood compounds from severe OSAS patients induced an endothelial stress, which led to a BBB's disorder, reflected by an opening of the paracellular pathway, with a possibility for cytotoxic compounds crossing the barrier. In response to the paracellular dysfunction, endothelial cells increased efflux transport to fight against the entry of possible cytotoxic compounds into the brain and/or to accelerate the return or the efflux of intracellular cytotoxic/neurotoxic components into the vascular flow. This study was conducted on an *in vitro* model of culture of cerebral endothelial cells in conditioned media. This model could be improved with astrocytes and pericytes; nevertheless, it has been shown earlier that it is a good pharmacological model<sup>15</sup>. Our work showed that our model may screen patient serum and may be an interesting tool to evaluate risk and may be, one day, the reversal effects in sleep apnea patients. It is important to identify OSAS patients when assessing patients with depression or cognitive impairment. Therapeutic treatment of OSAS might change the deteriorating trajectory of elderly patients with already diagnosed vascular depression and cognitive impairment/dementia. Moreover, our model may be used to predict BBB permeability in other sleep-related disorders.

## Materials and methods

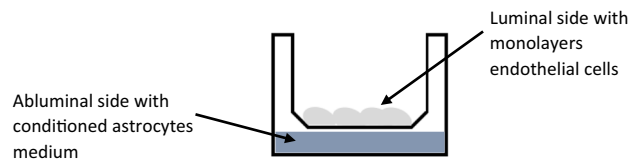
**Subjects.** Sera from patients had been obtained from the PROOF cohort study. The PROOF recruitment consisted of 1,011 volunteers aged  $\geq 65$  years and living in Saint-Etienne (France). The methods of evaluation and follow-up of the PROOF study have been described in laboratory studies<sup>55</sup>. In this cohort, sera from 29 subjects were selected: 14 subjects with severe untreated (newly diagnosed) OSAS (AHI  $> 30$ ) and 15 patients without OSAS (AHI  $< 5$ ).

The local Ethics Committee and the University Hospital (CCPRB Rhone-Alpes Loire: IRBN532016 and IRB2002/22/CHUSTE) approved the PROOF Study. The CNIL (national committee for information and liberty) gave agreement at this time for data collection. We confirm that all research was performed in accordance with guidelines and regulation.

**Consent statements.** All subjects gave their written consent to participate in the PROOF study. Blood was collected the morning after polygraphic recording and frozen samples had been anonymous, in accordance with good practice. Sera samples were frozen at  $-80^{\circ}\text{C}$  and conserved in such conditions in our sera collection. All subjects gave their informed consent to participate in this study. Clinical trial numbers of PROOF and SYNAPSE studies are NCT00759304 and NCT00766584.

**Chemicals and reagents.** Astrocyte cells (human astrocytes) were from ScienCell Research Laboratory (Carlsbad, CA, USA) and endothelial cells (HBEC-5i, human brain endothelial cells) were obtained from ATCC (Manassas, VA, USA). Specific inserts for 24-well (transparent PET membrane,  $0.45\text{-}\mu\text{m}$  pore diameter size) were from D. Dutscher (Alsace, France). EVOM voltohmmeter system was purchased from World Precision Instruments (Hertfordshire, UK). Occludin antibody was from Life Technologies (Saint Aubin, France), and ZO-1 was from GeneTex (San Antonio, TX, USA). Pgp, claudin-5, BCRP and MRP-1 antibodies came from Santa Cruz Biotechnology (Dallas, TX, USA). All compounds for Ringer HEPES buffer were from Sigma-Aldrich (St Quentin Fallavier, France) as well as BCECF-AM, verapamil, KO143, probenecid, Na-Fl, DMEM-F12 (Dulbecco's Modified Eagle's Medium) and methyl-thiazolyl-tetrazolium (MTT). Rhodamine-123 was from Thermo Fisher Scientific (Waltham, MA, USA).

**In vitro blood-brain barrier model used.** The BBB model was composed of HBEC-5i endothelial cells and was cultivated with human astrocyte conditioned medium on insert as previously described<sup>15</sup>. All cells were cultured in DMEM-F12 HAM and used before passage number 20, which is the time where these cells may begin to lose their BBB properties. HBEC-5i cells were seeded onto the luminal side of the insert at a density



**Figure 5.** Schema of the human in vitro model.

of  $4 \times 10^5$  cells  $\text{cm}^{-2}$  and cocultured with conditioned medium for 14 d, the time necessary to reach optimal permeability (Papp), and it was maintained and stable for 5 d in this model as shown in Fig. 5.

**Sodium-fluorescein permeability measurements.** The paracellular barrier function of the endothelial cells was evaluated by measuring apparent permeability of cells to sodium-fluorescein (Na-FI), which is a hydrophilic fluorescent molecule (MW: 376 Da). Firstly, the cells were washed with Ringer HEPES buffer, then Na-FI was diluted to  $10 \mu\text{g mL}^{-1}$  with Ringer HEPES buffer. It was placed onto the luminal side of the insert and left at  $37^\circ\text{C}$  for 1 h. After 1 h, samples were removed from the abluminal side and replaced with Ringer HEPES buffer. The Na-FI concentration was obtained using a fluorescence spectrophotometer (FluoroskanAscent™, Thermo Fisher Scientific, France), with excitation (485-nm) and emission (530-nm) wavelengths. Papp is measured in  $\text{cm s}^{-1}$  and is calculated using the following formula:

$$P_{app} = \frac{V_r}{C_0} \times \frac{1}{S} \times \frac{C_1}{t}$$

where  $P_{app}$  is the apparent permeability,  $V_r$  is the volume of medium in the abluminal side,  $C_0$  and  $C_1$  are the concentration of fluorescent compound in the luminal chamber at  $t_0$  and in the abluminal side after  $t$  time, i.e., 1 h of incubation, and  $S$  is the monolayer's area<sup>56</sup>.

**Whole cell ELISA assay.** Inserts with HBEC-5i monoculture were fixed for 20 min with 4% para formaldehyde at room temperature, before cells were washed with 1% BSA diluted in PBS at pH 7.4. After fixation, a blockade of the endogenous peroxidase site was performed for 20 min with 3%  $\text{H}_2\text{O}_2$  diluted in methanol. This was followed by a blocking of unspecific staining with 20% normal goat serum. Cells were incubated with monoclonal mouse anti-Pgp ( $2 \mu\text{g mL}^{-1}$ ), rabbit anti-ZO-1 ( $4 \mu\text{g mL}^{-1}$ ), rabbit anti-occludin ( $1 \mu\text{g mL}^{-1}$ ), rabbit anti-BCRP ( $2 \mu\text{g mL}^{-1}$ ) or rabbit anti-claudin-5 ( $2 \mu\text{g mL}^{-1}$ ) antibodies, respectively. Then cells were washed and incubated with secondary antibody peroxidase conjugated anti-mouse or rabbit IgG for 2 h at room temperature (diluted at 1/750). After cells were washed, TMB substrate was added for 10 min at room temperature and in the dark. After HCl neutralization, the reaction product color reagent was measured at 490-nm with a spectrophotometer.

**Drug transporter activity assays.** Transendothelial transport activity was measured in assessing the transport of specific substrates, i.e., rhodamine-123 for BCRP and Pgp, in the presence and absence of competitive inhibitors such as verapamil for Pgp and KO143 for BCRP. Cells were cultured in specific DMEM and washed, then cells were pre-incubated with or without inhibitors for 15 min at  $37^\circ\text{C}$ . Inhibitors ( $100 \mu\text{M}$ ) were added in the luminal side to study the transport from the luminal to abluminal side and conversely. The luminal compartment was incubated with rhodamine-123 ( $1 \text{ mM}$ ) for 1 h at  $37^\circ\text{C}$ . Finally, cells were lysed with 1% SDS, and fluorescence was obtained through a fluorescence spectrophotometer at 493-nm (excitation) and 515-nm (emission) wavelengths.

**Statistical analysis.** Statistical analysis was realized using Mann–Whitney test. GraphPad software was used for statistical analysis. The differences between means were considered to be significant when  $p$  values were  $< 0.05$ , and the value was expressed as the mean  $\pm$  s.e.m. Except for Table 1, statistical analysis was done with Stata 11 software and a t-test.

Received: 5 November 2019; Accepted: 8 June 2020

Published online: 09 July 2020

## References

- Franklin, K. A., Sahlin, C., Stenlund, H. & Lindberg, E. Sleep apnoea is a common occurrence in females. *Eur. Respir. J.* **41**, 610–615 (2013).
- Sands, S. A. *et al.* Enhanced upper-airway muscle responsiveness is a distinct feature of overweight/obese individuals without sleep apnea. *Am. J. Respir. Crit. Care Med.* **190**, 930–937 (2014).
- Beaudin, A. E., Waltz, X., Hanly, P. J. & Poulin, M. J. Impact of obstructive sleep apnoea and intermittent hypoxia on cardiovascular and cerebrovascular regulation. *Exp. Physiol.* **102**, 743–763 (2017).
- Sforza, E. & Roche, F. Chronic intermittent hypoxia and obstructive sleep apnea: an experimental and clinical approach. *Hypoxia Auckl. NZ* **4**, 99–108 (2016).
- Nelson, A. R., Sweeney, M. D., Sagare, A. P. & Zlokovic, B. V. Neurovascular dysfunction and neurodegeneration in dementia and Alzheimer's disease. *Biochim. Biophys. Acta BBA Mol. Basis Dis.* **1862**, 887–900 (2016).



6. Baril, A.-A. *et al.* Biomarkers of dementia in obstructive sleep apnea. *Sleep Med. Rev.* **42**, 139–148 (2018).
7. Pan, W. & Kastin, A. J. Can sleep apnea cause Alzheimer's disease?. *Neurosci. Biobehav. Rev.* **47**, 656–669 (2014).
8. Engleman, H. M. & Wild, M. R. Improving CPAP use by patients with the sleep apnoea/hypopnoea syndrome (SAHS). *Sleep Med. Rev.* **7**, 81–99 (2003).
9. Olsen, S., Smith, S. & Oei, T. P. S. Adherence to continuous positive airway pressure therapy in obstructive sleep apnoea sufferers: a theoretical approach to treatment adherence and intervention. *Clin. Psychol. Rev.* **28**, 1355–1371 (2008).
10. Lim, D. C. & Pack, A. I. Obstructive sleep apnea and cognitive impairment: Addressing the blood–brain barrier. *Sleep Med. Rev.* **18**, 35–48 (2014).
11. Hawkins, B. T. & Davis, T. P. The blood–brain barrier/neurovascular unit in health and disease. *Pharmacol. Rev.* **57**, 173–185 (2005).
12. Muoio, V., Persson, P. B. & Sendeski, M. M. The neurovascular unit—concept review. *Acta Physiol. Oxf. Engl.* **210**, 790–798 (2014).
13. Abbott, N. J. Blood–brain barrier structure and function and the challenges for CNS drug delivery. *J. Inherit. Metab. Dis.* **36**, 437–449 (2013).
14. Wanek, T., Mairinger, S. & Langer, O. Radioligands targeting P-glycoprotein and other drug efflux proteins at the blood–brain barrier. *J. Label. Compd. Radiopharm.* **56**, 68–77 (2013).
15. Puech, C. *et al.* Assessment of HBEC-5i endothelial cell line cultivated in astrocyte conditioned medium as a human blood–brain barrier model for ABC drug transport studies. *Int. J. Pharm.* **551**, 281–289 (2018).
16. Abbott, N. J., Rönnebeck, L. & Hansson, E. Astrocyte–endothelial interactions at the blood–brain barrier. *Nat. Rev. Neurosci.* **7**, 41–53 (2006).
17. Janzer, R. C. & Raff, M. C. Astrocytes induce blood–brain barrier properties in endothelial cells. *Nature* **325**, 253–257 (1987).
18. Eigenmann, D. E. *et al.* Comparative study of four immortalized human brain capillary endothelial cell lines, hCMEC/D3, hBMEC, TY10, and BB19, and optimization of culture conditions, for an in vitro blood–brain barrier model for drug permeability studies. *Fluids Barriers CNS* **10**, 33 (2013).
19. Hayashi, K. *et al.* Effects of hypoxia on endothelial/pericytic co-culture model of the blood–brain barrier. *Regul. Pept.* **123**, 77–83 (2004).
20. Ballabh, P., Braun, A. & Nedergaard, M. The blood–brain barrier: an overview: structure, regulation, and clinical implications. *Neurobiol. Dis.* **16**, 1–13 (2004).
21. Sweeney, M. D., Sagare, A. P. & Zlokovic, B. V. Blood–brain barrier breakdown in Alzheimer disease and other neurodegenerative disorders. *Nat. Rev. Neurol.* **14**, 133–150 (2018).
22. Tan, H.-L., Kheirandish-Gozal, L. & Gozal, D. Sleep, sleep disorders, and immune function. In *Allergy and sleep: basic principles and clinical practice* (eds Fishbein, A. & Sheldon, S. H.) 3–15 (Springer, Berlin, 2019). [https://doi.org/10.1007/978-3-030-14738-9\\_1](https://doi.org/10.1007/978-3-030-14738-9_1).
23. Macey, P. M. *et al.* Sex-specific hippocampus volume changes in obstructive sleep apnea. *NeuroImage Clin.* **20**, 305–317 (2018).
24. Palomares, J. A. *et al.* Water exchange across the blood–brain barrier in obstructive sleep apnea: an MRI diffusion-weighted pseudo-continuous arterial spin labeling study: altered BBB function in OSA. *J. Neuroimaging* **25**, 900–905 (2015).
25. Kheirandish-Gozal, L. *et al.* Regional brain tissue integrity in pediatric obstructive sleep apnea. *Neurosci. Lett.* **682**, 118–123 (2018).
26. Al Ahmad, A., Taboada, C. B., Gassmann, M. & Ogunshola, O. O. Astrocytes and pericytes differentially modulate blood–brain barrier characteristics during development and hypoxic insult. *J. Cereb. Blood Flow Metab. Off. J. Int. Soc. Cereb. Blood Flow Metab.* **31**, 693–705 (2011).
27. Berezowski, V., Landry, C., Dehouck, M.-P., Cecchelli, R. & Fenart, L. Contribution of glial cells and pericytes to the mRNA profiles of P-glycoprotein and multidrug resistance-associated proteins in an in vitro model of the blood–brain barrier. *Brain Res.* **1018**, 1–9 (2004).
28. Hermann, D. M. *et al.* Role of drug efflux carriers in the healthy and diseased brain. *Ann. Neurol.* **60**, 489–498 (2006).
29. Jablonski, M., Miller, D. S., Pasinelli, P. & Trotti, D. ABC transporter-driven pharmacoresistance in Amyotrophic Lateral Sclerosis. *Brain Res.* **1607**, 1–14 (2015).
30. Katsuno, T. *et al.* Deficiency of zonula occludens-1 causes embryonic lethal phenotype associated with defected yolk sac angiogenesis and apoptosis of embryonic cells. *Mol. Biol. Cell* **19**, 2465–2475 (2008).
31. Saitou, M. *et al.* Complex phenotype of mice lacking occludin, a component of tight junction strands. *Mol. Biol. Cell* **11**, 4131–4142 (2000).
32. Kook, S.-Y., Hong, H. S., Moon, M. & Mook-Jung, I. Disruption of blood–brain barrier in Alzheimer disease pathogenesis. *Tissue Barriers* **1**, e23993 (2013).
33. Donahue, J. E. & Johanson, C. E. Apolipoprotein E, amyloid- $\beta$ , and blood–brain barrier permeability in Alzheimer disease. *J. Neuropathol. Exp. Neurol.* **67**, 261–270 (2008).
34. Cuevas, E. *et al.* Amyloid Beta 25–35 induces blood–brain barrier disruption in vitro. *Metab. Brain Dis.* <https://doi.org/10.1007/s11011-019-00447-8> (2019).
35. Jiao, H., Wang, Z., Liu, Y., Wang, P. & Xue, Y. Specific role of tight junction proteins claudin-5, occludin, and ZO-1 of the blood–brain barrier in a focal cerebral ischemic insult. *J. Mol. Neurosci.* **44**, 130–139 (2011).
36. Poller, B., Drewe, J., Krähenbühl, S., Huwyler, J. & Gutmann, H. Regulation of BCRP (ABCG2) and P-glycoprotein (ABCB1) by cytokines in a model of the human blood–brain barrier. *Cell. Mol. Neurobiol.* **30**, 63–70 (2010).
37. Hartz, A. M. S., Bauer, B., Fricker, G. & Miller, D. S. Rapid modulation of P-glycoprotein-mediated transport at the blood–brain barrier by tumor necrosis factor- $\alpha$  and lipopolysaccharide. *Mol. Pharmacol.* **69**, 462–470 (2006).
38. Miller, D. S. ABC transporter regulation by signaling at the blood–brain barrier: relevance to pharmacology. *Adv. Pharmacol. San Diego Calif* **71**, 1–24 (2014).
39. Miller, D. S. Regulation of ABC transporters blood–brain barrier: the good, the bad, and the ugly. *Adv. Cancer Res.* **125**, 43–70 (2015).
40. Alberti, A. *et al.* Plasma cytokine levels in patients with obstructive sleep apnea syndrome: a preliminary study. *J. Sleep Res.* **12**, 305–311 (2003).
41. Nadeem, R. *et al.* Serum inflammatory markers in obstructive sleep apnea: a meta-analysis. *J. Clin. Sleep Med. JCSM Off. Publ. Am. Acad. Sleep Med.* **9**, 1003–1012 (2013).
42. Unnikrishnan, D., Jun, J. & Polotsky, V. Inflammation in sleep apnea: an update. *Rev. Endocr. Metab. Disord.* **16**, 25–34 (2015).
43. Kheirandish-Gozal, L., Tan, H.-L. & Gozal, D. Sleep-related breathing disorders and inflammation: TNF- $\alpha$  and IL-6 as prototypic examples. In *Allergy and sleep: basic principles and clinical practice* (eds Fishbein, A. & Sheldon, S. H.) 227–245 (Springer International Publishing, Berlin, 2019). [https://doi.org/10.1007/978-3-030-14738-9\\_18](https://doi.org/10.1007/978-3-030-14738-9_18).
44. de Vries, H. E. *et al.* The influence of cytokines on the integrity of the blood–brain barrier in vitro. *J. Neuroimmunol.* **64**, 37–43 (1996).
45. Voirin, A.-C., Perek, N. & Roche, F. Inflammatory stress induced by a combination of cytokines (IL-6, IL-17, TNF- $\alpha$ ) leads to a loss of integrity on bEnd. 3 endothelial cells in vitro BBB model. *Brain Res.* **1730**, 146647 (2020).
46. Khalyfa, A., Gozal, D. & Kheirandish-Gozal, L. Plasma extracellular vesicles in children with OSA disrupt blood–brain barrier integrity and endothelial cell wound healing in vitro. *Int. J. Mol. Sci.* **20**, 6233 (2019).
47. Khalyfa, A., Gozal, D. & Kheirandish-Gozal, L. Plasma exosomes disrupt the blood–brain barrier in children with obstructive sleep apnea and neurocognitive deficits. *Am. J. Respir. Crit. Care Med.* **197**, 1073–1076 (2018).

48. Jullian-Desayes, I. *et al.* Impact of obstructive sleep apnea treatment by continuous positive airway pressure on cardiometabolic biomarkers: a systematic review from sham CPAP randomized controlled trials. *Sleep Med. Rev.* **21**, 23–38 (2015).
49. Baronio, D. *et al.* Altered aquaporins in the brains of mice submitted to intermittent hypoxia model of sleep apnea. *Respir. Physiol. Neurobiol.* **185**, 217–221 (2013).
50. Heye, A. K., Culling, R. D., Valdés Hernández, M. D. C., Thrippleton, M. J. & Wardlaw, J. M. Assessment of blood–brain barrier disruption using dynamic contrast-enhanced MRI: a systematic review. *NeuroImage Clin.* **6**, 262–274 (2014).
51. pubmeddev & al, I. L., *et.* A pro-inflammatory role for nuclear factor kappa B in childhood obstructive sleep apnea syndrome. PubMed - NCBI. <https://www.ncbi.nlm.nih.gov/pubmed/24293770>.
52. Quintana-Gallego, E. *et al.* Gender differences in obstructive sleep apnea syndrome: a clinical study of 1166 patients. *Respir. Med.* **98**, 984–989 (2004).
53. Kapsimalis, F. & Kryger, M. H. Gender and obstructive sleep apnea syndrome, part 1: clinical features. *Sleep* **25**, 409–416 (2002).
54. Macey, P. M. *et al.* Obstructive sleep apnea and cortical thickness in females and males. *PLoS ONE* **13**, e0193854 (2018).
55. Sforza, E. *et al.* Cognitive function and sleep related breathing disorders in a healthy elderly population: the synapse study. *Sleep* **13**(3), e0193854 (2010).
56. Puech, C., Delavenne, X. & Perek, N. The expected characteristics of an in vitro human blood brain barrier model derived from cell lines, for studying how ABC transporters influence drug permeability. *J. Drug Deliv. Sci. Technol.* **45**, 159–167 (2018).

## Acknowledgments

This work was supported by grants from Jean Monnet University of Saint Etienne (France) and grants from DRCI of Saint Etienne University Hospital (PHRC National and PHRC Regional), France. The authors thank Delphine Maudoux, Maryse Victoire, Arnaud Garcin (CHU Saint Etienne), Prof JC Barthelemy, the Association Synapse, Saint-Etienne, France (Michel Segura: past President and Charles Travaglini: current President), and all of the participants in the study.

## Author contributions

A.C.V. designed the study, wrote the main manuscript text and prepared and analyzed the Figures. F.R. and N.P. designed the study and read and corrected the article. F. ROCHE analyzed the records. S.C. prepared and analyzed the Table.

## Competing interests

The authors declare no conflict of interest (financial or not financial).

## Additional information

**Correspondence** and requests for materials should be addressed to F.R.

**Reprints and permissions information** is available at [www.nature.com/reprints](http://www.nature.com/reprints).

**Publisher's note** Springer Nature remains neutral with regard to jurisdictional claims in published maps and institutional affiliations.



**Open Access** This article is licensed under a Creative Commons Attribution 4.0 International License, which permits use, sharing, adaptation, distribution and reproduction in any medium or format, as long as you give appropriate credit to the original author(s) and the source, provide a link to the Creative Commons license, and indicate if changes were made. The images or other third party material in this article are included in the article's Creative Commons license, unless indicated otherwise in a credit line to the material. If material is not included in the article's Creative Commons license and your intended use is not permitted by statutory regulation or exceeds the permitted use, you will need to obtain permission directly from the copyright holder. To view a copy of this license, visit <http://creativecommons.org/licenses/by/4.0/>.

© The Author(s) 2020