



**HAL**  
open science

## **Radiation-induced PGE 2 sustains human glioma cell growth and survival through EGF signaling**

Emeline Brocard, Kristell Oizel, Lisenn Lalier, Claire Pecqueur, François Paris, François M. Vallette, Lisa Oliver

► **To cite this version:**

Emeline Brocard, Kristell Oizel, Lisenn Lalier, Claire Pecqueur, François Paris, et al.. Radiation-induced PGE 2 sustains human glioma cell growth and survival through EGF signaling. *Oncotarget*, 2015, 6 (9), pp.6840-6849. 10.18632/oncotarget.3160 . inserm-02914000

**HAL Id: inserm-02914000**

**<https://inserm.hal.science/inserm-02914000>**

Submitted on 11 Aug 2020

**HAL** is a multi-disciplinary open access archive for the deposit and dissemination of scientific research documents, whether they are published or not. The documents may come from teaching and research institutions in France or abroad, or from public or private research centers.

L'archive ouverte pluridisciplinaire **HAL**, est destinée au dépôt et à la diffusion de documents scientifiques de niveau recherche, publiés ou non, émanant des établissements d'enseignement et de recherche français ou étrangers, des laboratoires publics ou privés.

# Radiation-induced PGE<sub>2</sub> sustains human glioma cell growth and survival through EGF signaling

Emeline Brocard<sup>1,2,\*</sup>, Kristell Oizel<sup>1,2,\*</sup>, Lisenn Lalier<sup>1,2,3</sup>, Claire Pecqueur<sup>1,2</sup>, François Paris<sup>1,2,3</sup>, François M. Vallette<sup>1,2,3</sup>, Lisa Oliver<sup>1,2,4</sup>

<sup>1</sup>Centre de Recherche en Cancérologie Nantes Angers UMR INSERM 892, CNRS 6299, Université de Nantes, 44007 Nantes, France

<sup>2</sup>Université de Nantes, Faculté de Médecine, 44007 Nantes, France

<sup>3</sup>LaBCT, Institut de Cancérologie de l'Ouest, 44805 St Herblain cedex, France

<sup>4</sup>CHU de Nantes, 1 Place Alexis Ricordeau, 44093 Nantes, France

\*These authors have contributed equally to this work

## Correspondence to:

Lisa Oliver, e-mail: lisa.oliver@univ-nantes.fr

François M. Vallette, e-mail: francois.vallette@inserm.fr

**Keywords:** Radiation, caspase, prostaglandin, glioblastoma, EGFR

**Received:** December 08, 2014

**Accepted:** January 16, 2015

**Published:** February 25, 2015

## ABSTRACT

***Glioblastoma Multiforme (GBM) is the most common brain cancer in adults. Radiotherapy (RT) is the most effective post-operative treatment for the patients even though GBM is one of the most radio-resistant tumors. Dead or dying cells within the tumor are thought to promote resistance to treatment through mechanisms that are very poorly understood. We have evaluated the role of Prostaglandin E2 (PGE<sub>2</sub>), a versatile bioactive lipid, in GBM radio-resistance. We used an *in vitro* approach using 3D primary cultures derived from representative GBM patients. We show that irradiated glioma cells produced and released PGE<sub>2</sub> in important quantities independently of the induction of cell death. We demonstrate that the addition of PGE<sub>2</sub> enhances cell survival and proliferation through its ability to trans-activate the Epithelial Growth Factor receptor (EGFR) and to activate β-catenin. Indeed, PGE<sub>2</sub> can substitute for EGF to promote primary cultures survival and growth *in vitro* and the effect is likely to occur through the Prostaglandin E2 receptor EP2.***

## INTRODUCTION

Glioblastoma Multiforme (GBM) is the most common form of brain cancer in the adult and its prognosis remains poor. Standard therapy includes surgery followed by external beam radiotherapy (RT) and/or chemotherapy, principally temozolomide (TMZ), a DNA alkylating/methylating agent [1]. However, the effect of TMZ is beneficiary only to a subset of patients that do not express O-6-methylguanine-DNA methyltransferase (MGMT), a DNA repair enzyme [2]. GBM appear to be intrinsically extremely radio-resistant and this has been linked to the presence of cancer stem cells (CSC), which are efficient in repairing DNA damage [3]. Radiation resistance has also been linked to glioma heterogeneity [4], the lack of apoptosis [5] or activation of Wnt/β-catenin, Notch, EGF receptors and kinase signaling pathways [6–9].

Recent results have shown that RT induced a mitogenic signal that could originate from dying tumor and stromal cells [10]. Huang *et al.* [11] further demonstrated that after caspase activation dying cells released the bioactive lipid prostaglandin E2 (PGE<sub>2</sub>), which in turn was capable of triggering tumor repopulation. The ability of PGE<sub>2</sub> to stimulate the proliferation of numerous types of cells has been shown both *in vivo* and *in vitro* and enzymes implicated in the synthesis of this prostanoid, such as cyclooxygenase 2 (Cox2), have been considered as a major target for anti-cancer therapies [10]. PGE<sub>2</sub> is implicated in numerous mechanisms including the induction of cell migration to inflammation that can affect in cancer progression in various different ways. PGE<sub>2</sub> has been shown to induce the synthesis of Bcl-2, a major anti-apoptotic protein in colon cancer and as such could directly control apoptosis [12]. On the other hand, we have shown

that intracellular PGE<sub>2</sub> triggers Bax, a pro-apoptotic protein, activation and as such would participate in the induction of apoptosis in both glioma and colon cancer [13–15]. These results suggest that PGE<sub>2</sub> may play multiple and somewhat contradictory roles during cancer progression.

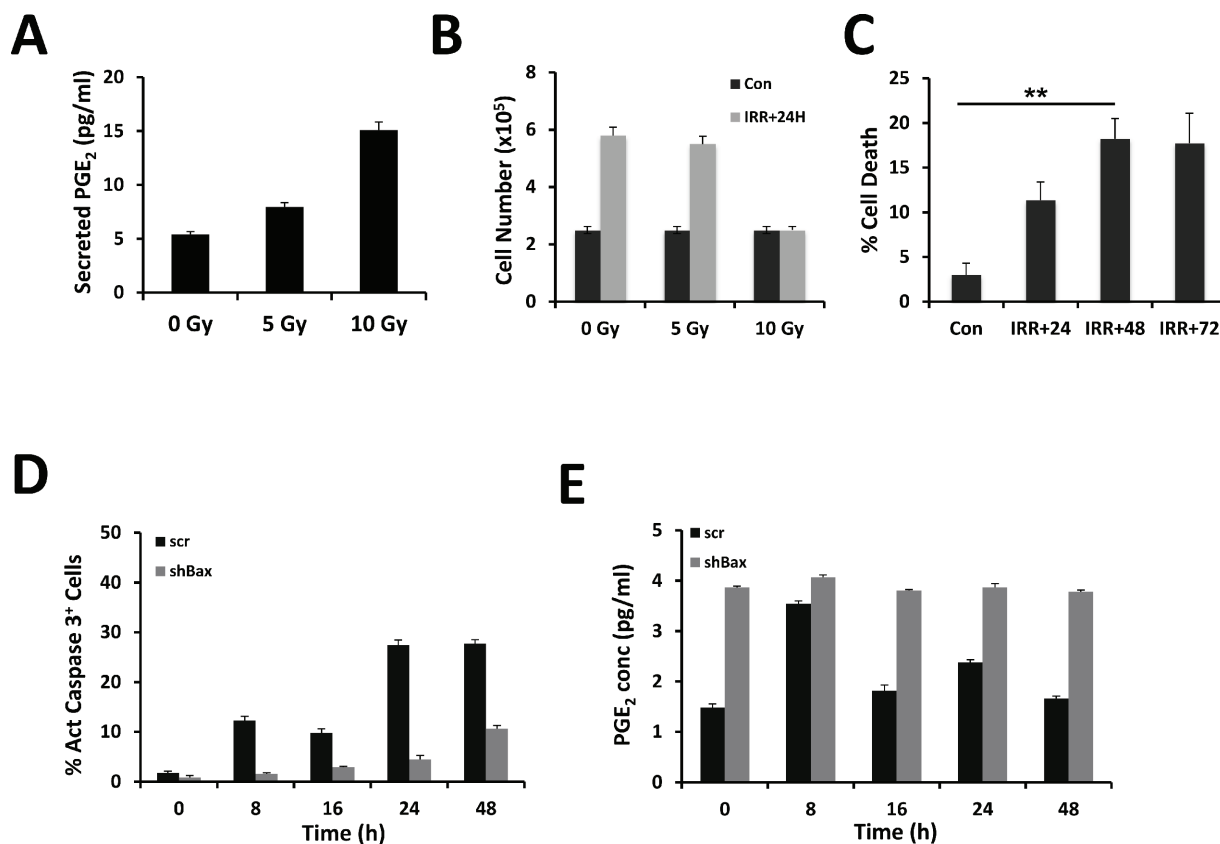
In the present study, we addressed the question of the role PGE<sub>2</sub> on tumor progression and survival, using primary cultures derived from human GBM grown in 3D-cultures.

## RESULTS

### Irradiation of the human glioma cell line U251 induces the production of PGE<sub>2</sub> without activation of caspase 3 or apoptosis

The accumulation of PGE<sub>2</sub> was measured 24 h after  $\gamma$ -irradiation of the human glioma cell line U251 at different intensities (i.e. 0, 5 and 10 Gy). As shown in Figure 1A, the amount of PGE<sub>2</sub> found in the culture supernatant was proportional to the dose of radiation. Recent results have

associated the induction of caspase activity in cancer cells to the production of PGE<sub>2</sub> upon irradiation of cancer cells [11, 13–15]. We then assessed the viability of the cells under our conditions and found that only the high dose of irradiation (10 Gy) provoked a cell growth arrest and subsequent cell death after 48 h (Figure 1B, 1C). To determine whether the cell death was caspase 3 dependent, the number of active caspase 3 cells was quantified. As seen in Figure 1D, there was a close correlation between the percent of cell death and the percent of active caspase 3 cells. To evaluate the implication of caspase in the production of PGE<sub>2</sub>, we knocked down the expression of Bax, a central pro-apoptotic member of the BCL-2 family, in U251 cells. As illustrated in Figure 1D, we observed a significant decrease in the induction of caspase 3 activity in the absence of Bax after  $\gamma$ -irradiation at 10 Gy. However, quite surprisingly, the knock down of Bax appeared to promote the production of PGE<sub>2</sub> in untreated U251 cells and the amount of PGE<sub>2</sub> is maintained upon irradiation (Figure 1E), as previously observed in primary cultures of GBM [14]. Of note, the



**Figure 1: Release of PGE<sub>2</sub> from  $\gamma$ -irradiated cells.** U251 cells were irradiated in serum-free medium at the indicated dose. PGE<sub>2</sub> secretion was measured in supernatants after 24 h. The concentration of PGE<sub>2</sub> (pg/ml) released from irradiated U251 cells was determined using an ELISA (see materials and methods) (A). Cell viability was determined by trypan blue exclusion using the Countess automatic cell counter (Life Technologies), 24 h after irradiation of U251 cells (B). Cell death was estimated as above at 24 h, 48 h and 72 h post-irradiation (C). U251 cells were transduced with shRNA encoding viral particles [either encoding for a non-relevant shRNA (scr) or shRNA directed against Bax mRNA]. Cells were irradiated in serum-free medium at 10 Gy; harvested at the indicated time points, fixed and labeled with active caspase 3 antibody coupled to a fluorescent secondary antibody. The percentage of labeled cells was assessed by flow cytometry (D). The corresponding PGE<sub>2</sub> secretion was measured in supernatants during 48 h after irradiation at 5 Gy (E). Please note that in the latter experiments, the secretion of PGE<sub>2</sub> was decreased in scr-treated U251 compared to untreated cells (compare A and E).

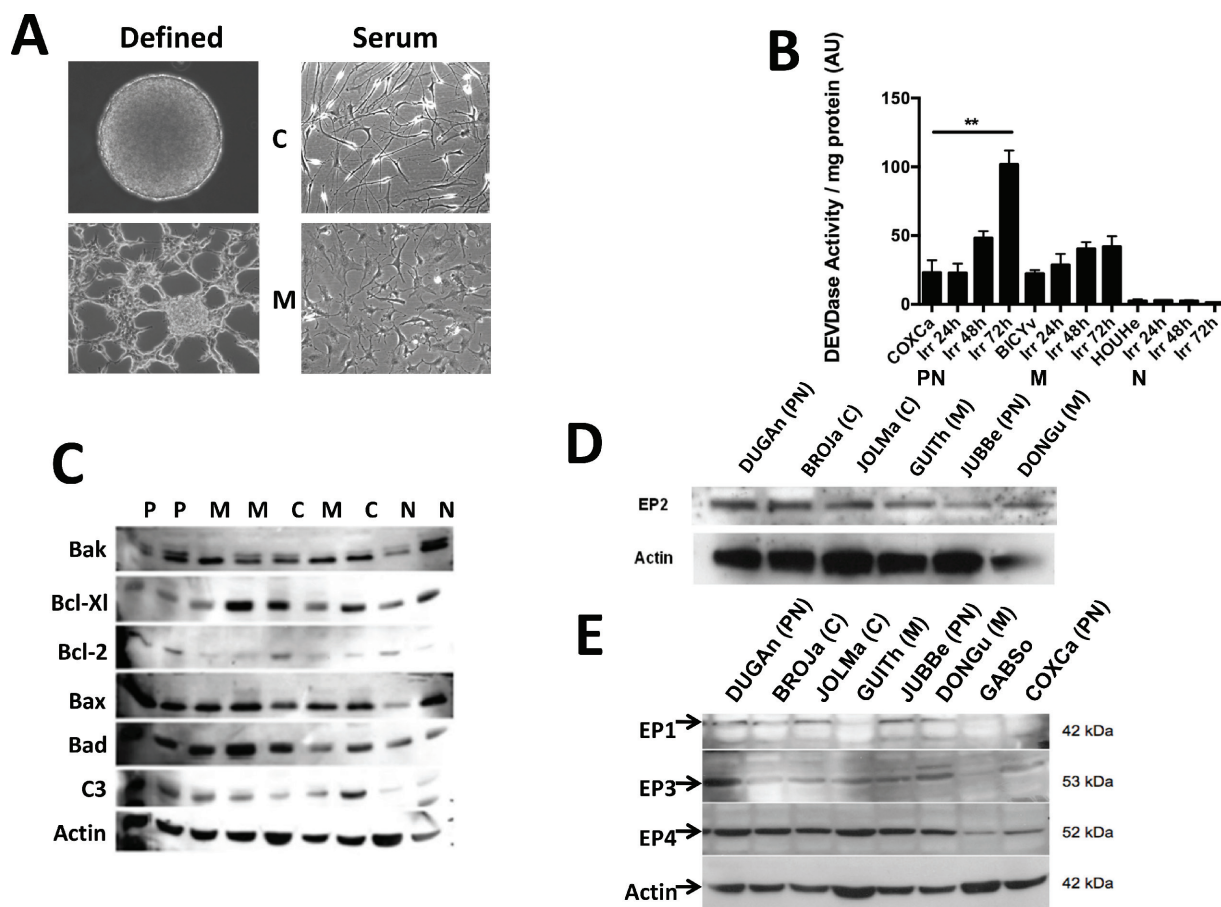
induction of PGE<sub>2</sub> in control cells reached a peak 8 h after a 10 Gy irradiation to returned to normal at 16 h (Figure 1E).

We conclude from these results that PGE<sub>2</sub> could be produced upon irradiation even in the absence of caspase activation.

### Irradiation, apoptosis and the expression of key members of the BCL-2 family in GBM primary cultures

To examine the biological consequence of the release of PGE<sub>2</sub> by GBM, we used primary cultures derived from resected tumors. Cells dissociated from these tumors were capable of growing as neurospheres and/or as adherent cells in almost 80% of the cases. We were able to derive primary cultures, which correspond to proneural (young adults with a better prognosis but unresponsive to treatment), classical, neural and mesenchymal (older adults with a worse prognosis) classification of GBM corresponding to the molecular subtypes defined by Verhaak *et al.* [16]

(Supplementary Figure S1 and Oliver *et al.* in preparation). Primary cultures in defined medium grow as spheres or as spheres and adherent cells whereas in serum complemented medium all primary cultures were adherent (Figure 2A). In all except one (15/16) primary culture we did not observed activation of caspase upon irradiation as similar low caspase 3 activities were observed in irradiated and untreated primary cultures. In Figure 2B, 3 primary cultures are given as an example (1/16 with high caspase activity, 3/16 with medium activity and 12/16 with low or no activity). Of note, the GBM cultures were able to undergo caspase dependent apoptosis as shown by their response to etoposide (Supplementary Figure S2). However, since a similar production of PGE<sub>2</sub> was observed in all cells (data not shown), we conclude that it was independent of caspase activity and of the classes of GBM. Next we examined the expression of members of the BCL-2 family commonly found in GBM [17], in the different primary cultures. We observed an almost complete absence in the expression of Bcl-2 in 4/5 mesenchymal primary cultures while the other primary cultures expressed



**Figure 2: Characteristics of primary cultures derived from GBM patients.** Pictograph of primary cultures grown in defined (left) and serum-supplemented (right) media. Depending on the type of GBMs and/or culture conditions, cells can grow as spheres and/or as adherent cells (C = classical and M = mesenchymal subtypes) (A). Caspase induction was measured in primary cultures after irradiation (10 Gy). The induction of caspase was observed in a single tumor. The cut-off for caspase 3 activation resulting in cell death was defined at 50 AU/mg protein (B). The expression of key proteins of apoptosis was examined in primary cultures and illustrated in representative of the different subtype (PN = proneural, N = neural, C = classical and M = mesenchymal) (C). The expression of the receptors of PGE<sub>2</sub> (EP 1–4) was determined by western blots in the different representative primary cultures (D, E).

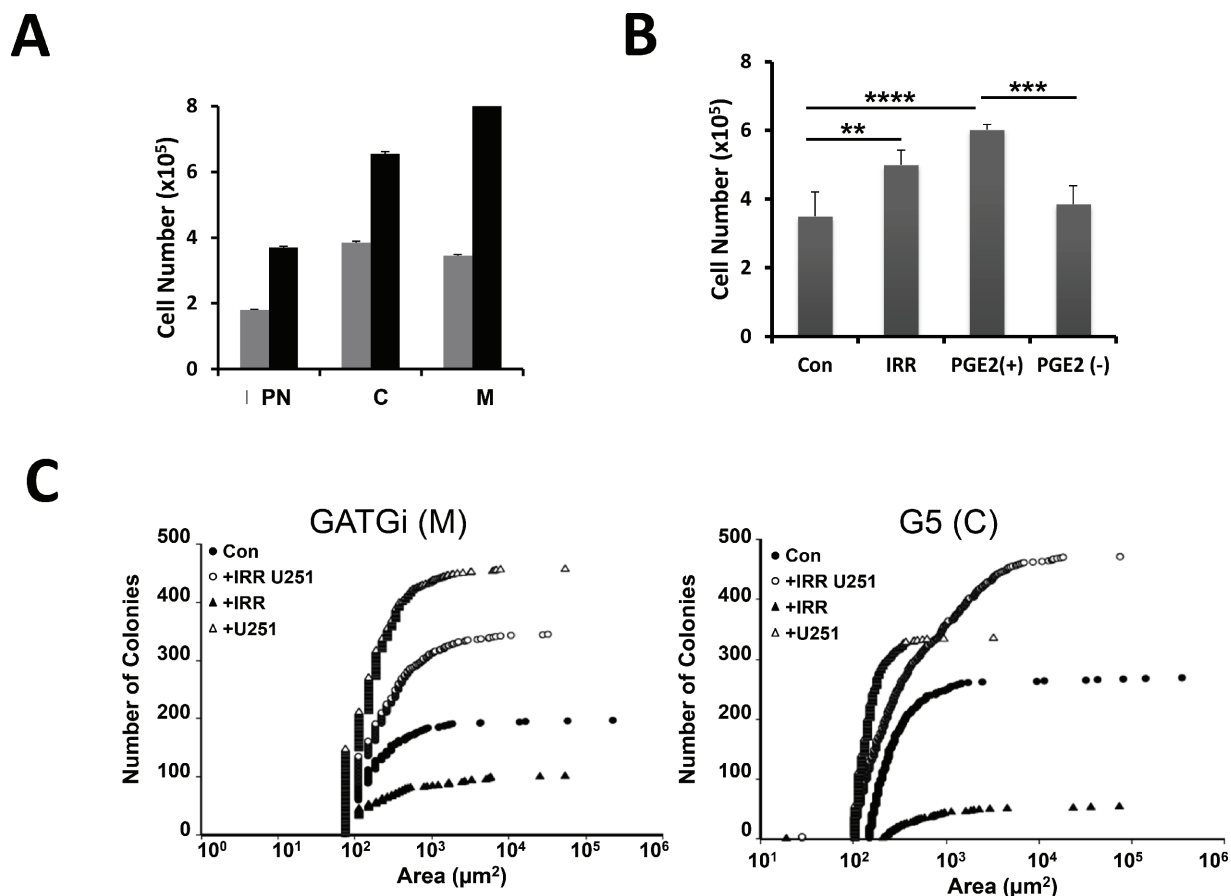
Bcl-2 in varying concentrations. The other proteins of the BCL-2 family such as Bcl-Xl, Bax, Bak or Bad were present in all the primary cultures at different levels (Figure 2C).

The expression of these proteins has been linked to PGE<sub>2</sub> signaling pathways [12]. As shown in Figure 2D, EP2 was expressed in the four different types of GBM *in vitro* at similar level. Next, we examined the expression of the other PGE<sub>2</sub> receptors *in vitro* (Figure 2E), we found that EP1, EP3 and EP4 receptors, which are also expressed in the brain [18], had a variable expression in primary cultures.

### Response of GBM primary cultures to PGE<sub>2</sub>

Similar to U251,  $\gamma$ -irradiated primary cultures produced PGE<sub>2</sub> although this production was heterogeneous and most of PGE<sub>2</sub> remained associated to the spheres rather than released into the culture medium (data not shown). Primary GBM were cultivated in the presence of supernatant

of irradiated cell culture media (ICCM). As shown in Figure 3A, cell proliferation was significantly increased upon incubation of primary cultures with ICCM. This effect was abolished after the immuno-depletion of PGE<sub>2</sub>. Note that the addition of PGE<sub>2</sub> in immuno-depleted ICCM was sufficient to restore the effect on cell proliferation (Figure 3B). Next we used the 3D co-culture in soft agar system to determine the effects of the released PGE<sub>2</sub> on the growth and survival of primary cultures. Under these experimental conditions U251 cells were irradiated with 5 Gy and 24 h later primary cultures were overlaid in soft agar and cultured for a further 3 weeks, as described in the methods section. Our first observation was the complete absence of large colonies in primary cultures overlaid over irradiated U251 cells as compared to control dishes (Figure 3C). However, the number of colonies in the co-cultures (primary cultures + irradiated U251 cells) was significantly increased. Next, we examined the expression of the different PGE<sub>2</sub>



**Figure 3: Effect of irradiation on GBM morphology and numbers *in vitro*; expression of PGE<sub>2</sub> receptors in the primary cultures.** Primary cultures were either grown in defined medium (grey bars) or in 24 h-conditioned medium from U251 cells irradiated at 5 Gy (black bars) for 24 h, then cell number was determined using the Countess automatic cell counter. The data from representative cultures performed in triplicate are shown (A). Primary culture was grown in the absence (con) or in the presence of supernatants from irradiated cells (IRR), supernatants immune-depleted in PGE<sub>2</sub> (PGE2-) or in immune-depleted medium containing 10 μM PGE<sub>2</sub> (PGE2+). Cell number was determined 24 h later as above (B). (\*\**p* = 0,005; \*\*\**p* = 0.0005; \*\*\*\**p* < 0.0001). 3D co-culture in soft agar of primary cultures grown in the absence (con) or in the presence of irradiated U251 cells (+IRR). The +IRR cultures show smaller but much more colonies that the control cultures. GATGi and G5 are illustrating of mesenchymal (M) and classical (C) GBM sub-types (C). Data are representative of 3 experiments done in duplicate.

receptors in the primary cultures: first the expression of EP2 as it is the most widely expressed prostaglandin receptor in the brain and it is functionally coupled to anti-apoptotic and protective functions in neurons and in secondary neurotoxicity during inflammation [18, 19].

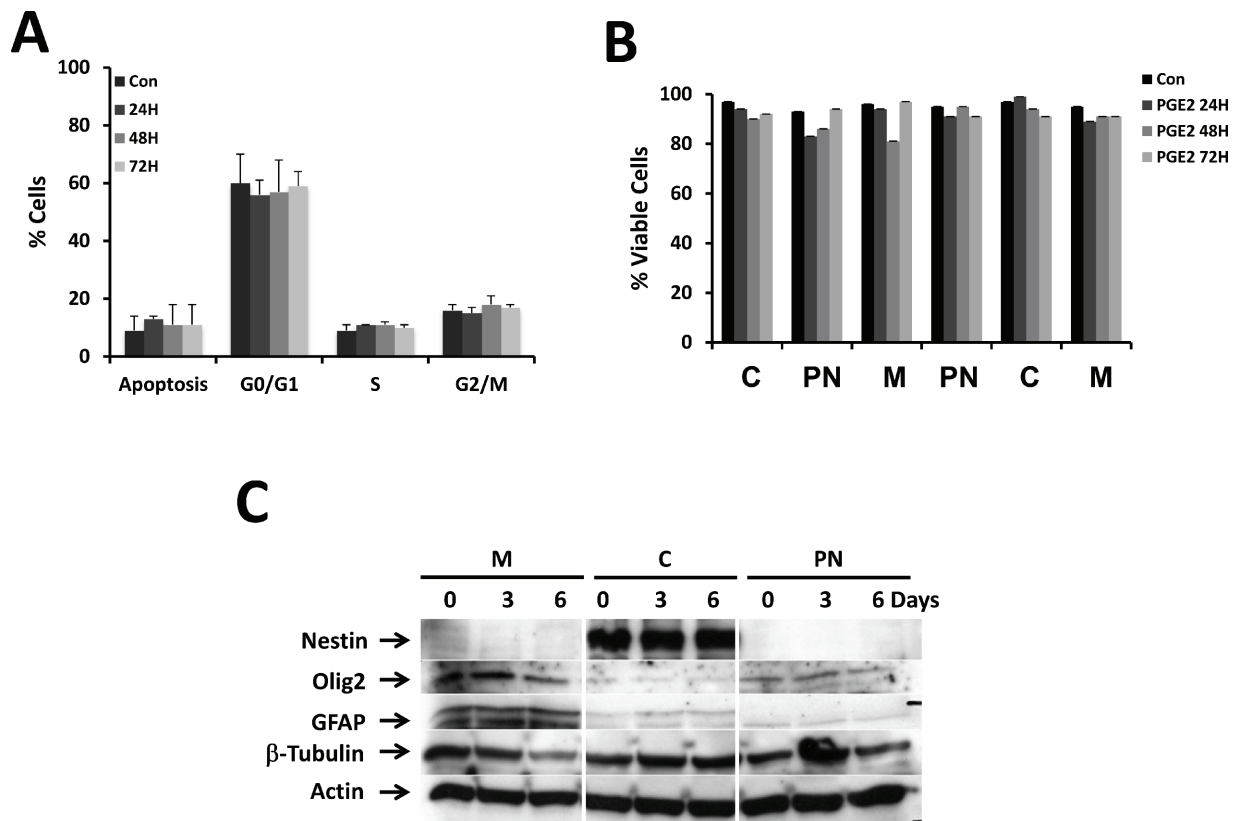
We did not observe any significant differences either on the cell cycle and apoptosis upon incubation with 10  $\mu$ M PGE<sub>2</sub> for 72 h between the different GBM cultures (Figure 4A) or on cell viability (Figure 4B).

It has been suggested that PGE<sub>2</sub> liberated from dead or dying cells could regulate stem cells homeostasis and differentiation [20]. As our culture conditions support the survival and the proliferation of CSC [3], we examined if PGE<sub>2</sub> could induce a change in the proportion of CSCs by analyzing the expression of stemness markers upon long-term exposure to the bioactive lipid. As shown in Figure 4C, the expression of stemness markers were markedly different in the different types of GBM primary cultures: some expressed markers for all types of neural cells (i.e. Olig2, GFAP and  $\beta$ -tubulin), and others expressing limited amount of neural markers (i.e. the neuronal  $\beta$ -tubulin) while others expressed high level of nestin and  $\beta$ -tubulin and low level of Olig2 and GFAP. In all cases incubation with PGE<sub>2</sub> did not affect the nature and/or the level of these markers.

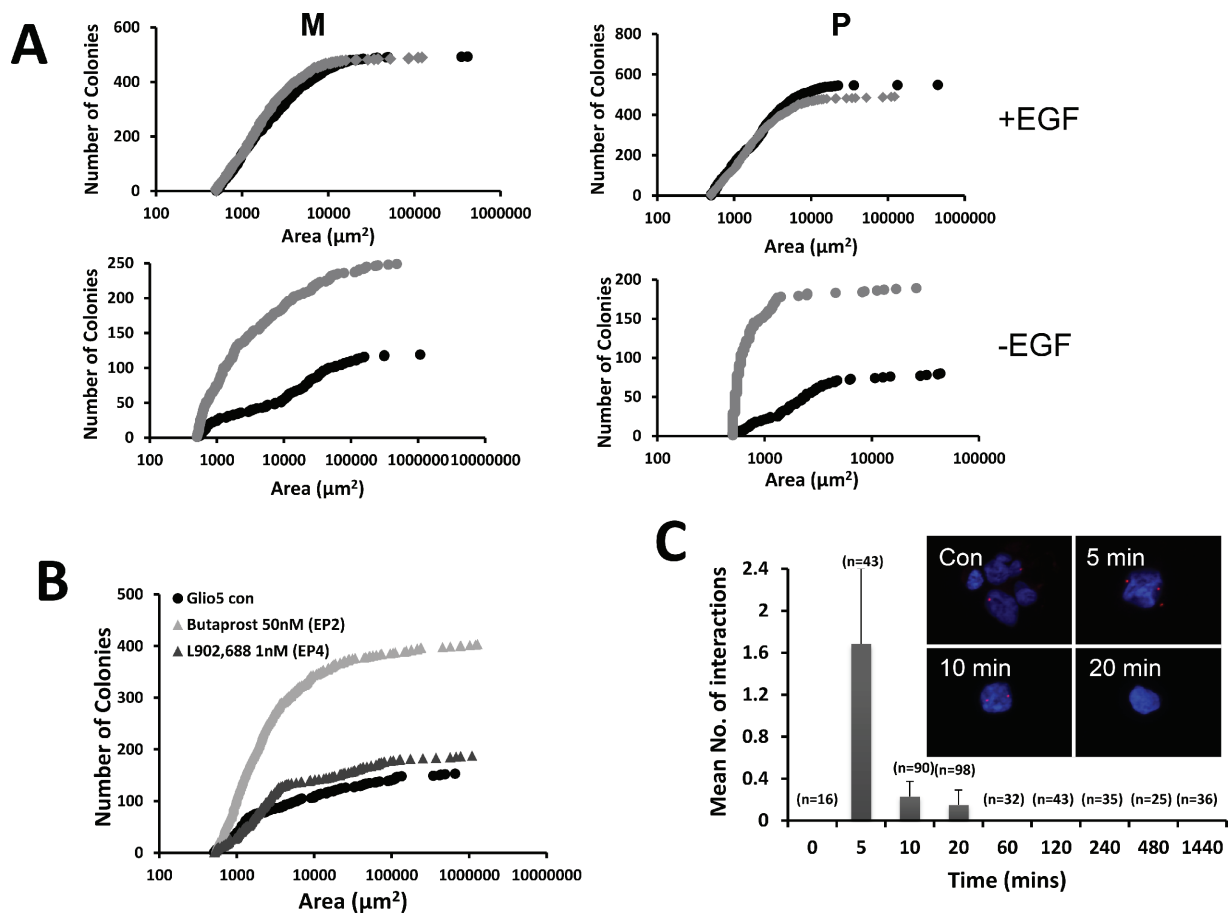
### Effect of PGE<sub>2</sub> on the number and size of neurospheres in the presence or in the absence of EGF

PGE<sub>2</sub> has been shown to trans-activate EGFR through its rapid phosphorylation [21, 22]. Since, GBM primary cultures are cultivated in the presence of EGF, we examined the effect of PGE<sub>2</sub> in the absence or in the presence of this growth factor. We found that GBM primary cultures grew similarly in the presence or in the absence of PGE<sub>2</sub> when EGF was present (Figure 5A). However, in absence of EGF, the addition of PGE<sub>2</sub> increased both the size and the number of spheres, which reached in size, but not in numbers, a level similar to that observed in the presence of EGF (Figure 5A). Note that the addition of PGE<sub>2</sub> alone did not have the same effect as PGE<sub>2</sub> released from irradiated U251 cells. This could be due to the fact that the biolipid is very labile and has a very short half-life or to the presence of other factors. Possibly the continual release of PGE<sub>2</sub> by dying cells has a more dramatic effect or the effect observed could be due to a combination of factors released.

Next we used agonists against EP2 and EP4 to determine the PGE<sub>2</sub> receptor implicated in this effect. Results obtained in 3D cultures showed that Butaprost, an



**Figure 4: Effect of PGE<sub>2</sub> on cell cycle, survival and expression of stemness markers.** The effect of PGE<sub>2</sub> (10  $\mu$ M) on cell cycle was analyzed together with the induction of apoptosis. As illustrated no effect on the addition of PGE<sub>2</sub> on the different phases of the cycle (A) and cell viability (B) was observed over a period of 72 h. We also analyzed the effect of PGE<sub>2</sub> on the expression of stemness markers under similar conditions and as illustrated in (C), the expression of these markers was not affected by the treatment.



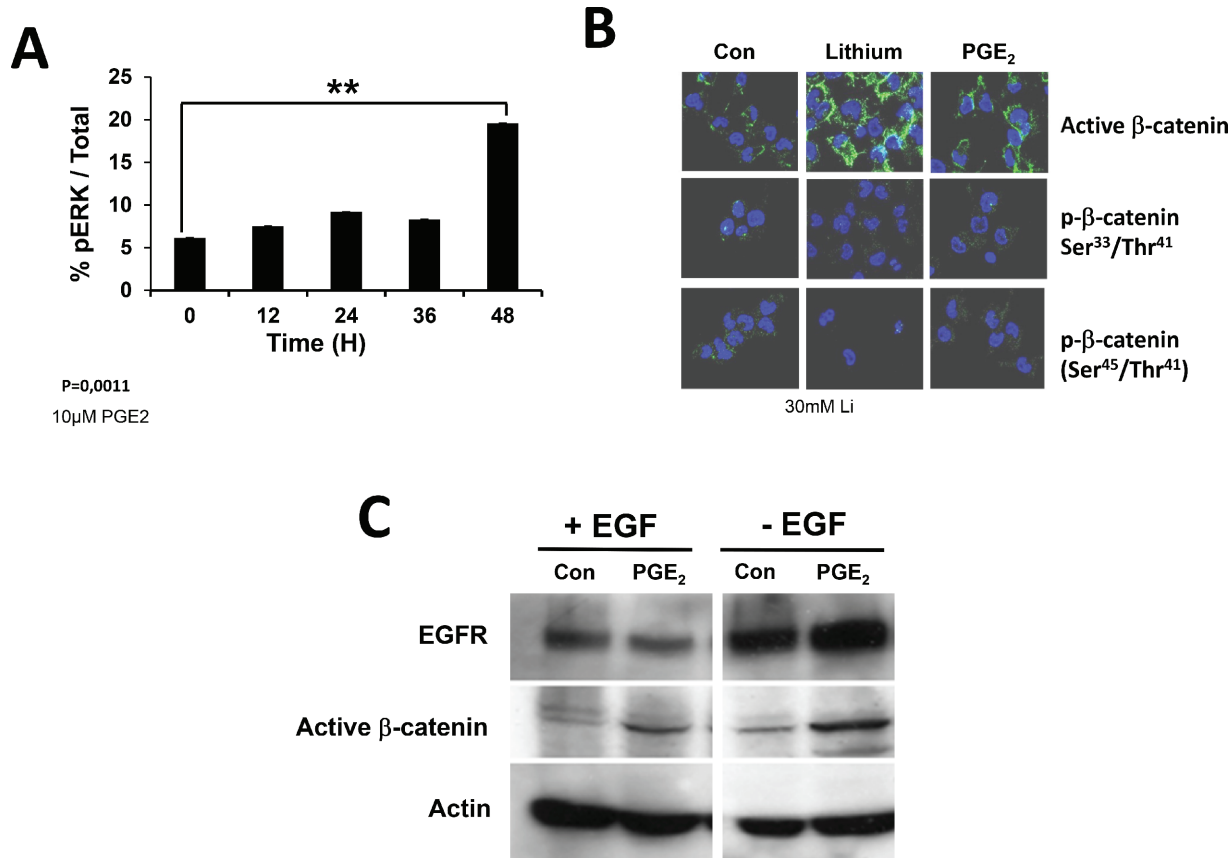
**Figure 5: PGE<sub>2</sub> and the EGF signaling pathway.** We examined the effect of PGE<sub>2</sub> on both the amount of the sizes of spheres in the presence (top) or in the absence (bottom) of EGF. Primary cultures were grown in 3D cultures in the absence (black lines) or in the presence of 10 µM PGE<sub>2</sub> for 3 weeks and the colonies formed were quantified using MetaMorph soft-ware (A) The data presented are representative of 3 independent experiments. Primary cultures were grown in soft agar in the absence or presence of agonist against EP2 (50 nM Butaprost) and EP4 (1 nM L902,688). After 3 weeks the number and size of neurospheres were determined (B). PGE<sub>2</sub> (10 µM) induces transactivation of EGFR. Proximity ligation *in situ* assay (P-LISA) adapted from the O-link protocol was used to monitor the phosphorylation of EGFR after addition of 10 mM PGE<sub>2</sub> in the cells. Each red dot indicates a close proximity between EGFR (rabbit monoclonal) and pEGFR (mouse monoclonal). Graph represents the statistical analysis of the number of interactions versus time. The data presented are the mean of 2 experiments done in triplicate (C).

agonist of EP2 and not L902,688, an EP4 ligand, trigger a PGE<sub>2</sub> like effect in the absence of EGF (Figure 5B). These results suggest that EGFR signaling could be implicated in the effect of PGE<sub>2</sub> in primary cultures. EGFR was expressed in almost all primary cultures and basal phosphorylation monitored by immunoblot indicated that the receptor was phosphorylated under our conditions (Supplementary Figure S3). Incubation of primary cultures with PGE<sub>2</sub> for 72 h did not show any significant activation of EGFR through increased phosphorylation (Supplementary Figure S3). Next we look at a short-term activation of EGFR by PGE<sub>2</sub> using the OLINK technique [23]. As illustrated in Figure 5C, PGE<sub>2</sub> induced a strong but transient phosphorylation of the receptor after 5 min incubation.

EGFR triggered the extracellular signal-regulated kinase (ERK)-mitogenic activated protein kinase (ERK/MAPK) signaling in many cells lines, an important

component of radiation-induced hormesis [24] and glioma radio-resistance [25]. Primary cultures were treated with PGE<sub>2</sub> and then the phosphorylation of ERK was quantified using a total phosphoERK1/2 ELISA. As shown in Figure 6A, the addition of PGE<sub>2</sub> triggered a phosphorylation of ERK in primary cultures after 48 hours.

In colon cancer, PGE<sub>2</sub> has been implicated in the induction of the Wnt/β-catenin pathway and as such to potentially play a critical role in carcinogenesis [26]. We analyze the activation of this pathway under our conditions by incubating primary cultures with 10 mM PGE<sub>2</sub> for 48 h. Cells were than analyzed for β-catenin activation by immunohistochemistry (Figure 6B). The activation of β-catenin by PGE<sub>2</sub> was compared to that induced by lithium and as shown in Figure 6B, both treatments led to the activation of β-catenin while on the other hand no effect on its phosphorylation was observed. We observed



**Figure 6: Activation of EGFR receptor monitored by ERK and  $\beta$ -catenin activation.** EGFR signaling pathway leads to the phosphorylation of ERK (pERK) and regulates  $\beta$ -catenin localization and stability (active  $\beta$ -catenin). We thus determine the percentage of pERK after incubation of primary cultures with PGE<sub>2</sub> (A) and the intracellular localization of active  $\beta$ -catenin, using Lithium as a positive control (B). We also analyzed the effect of PGE<sub>2</sub> on EGFR and active  $\beta$ -catenin in the presence or in the absence of EGF (C).

an increase in the induction of this activation and in the presence and in the absence of EGF, although the induction was more important in the latter case (Figure 6C).

## DISCUSSION

Glioma are resistant to chemo-therapy induced apoptosis [27]. Radio-therapy is the most effective therapy in GBM although these tumors remain largely refractory to the treatment. Mechanisms implicated in GBM radio-resistance are not well-known and unraveling them could provide new indications for better treatment strategies. Fractional/partial killing by radiation has been associated with a more rapid proliferation of the surviving cells and repopulation has been viewed over the longtime, as a major therapeutic challenge [28, 29]. This effect has been linked to the radiation-induced release of mitogenic factors by normal and/or cancer cells (30), the stimulation of radio-resistant tumor initiating cells [3, 31]. Recently, one potential mechanism, called “Phoenix Rising”, has been proposed to explain this effect [11, 20]. Huang et al. elegantly demonstrated that the

proliferation signal could be generated by PGE<sub>2</sub> produced upon activation of caspase 3, an enzyme essential for the completion of apoptosis, by radiotherapy [11]. We have shown that apoptosis is accompanied by an increase in the production of intracellular PGE<sub>2</sub> in glioma and colon cancer but that this increase was upstream of the activation of caspase 3 [13–15]. We have observed that some GBM express high amounts of m-PGES1, the enzyme responsible for the synthesis of PGE<sub>2</sub> from PGH, the product of COX2 [13]. Interestingly, the expression of m-PGES was associated with apoptosis and *in vitro* analyses indicated that this apoptosis was strictly Bax dependent [13–15]. We found that the production of PGE<sub>2</sub> was triggered by most apoptotic inducers and that cells resistant to apoptosis accumulated and released abundant level of the lipid through MRP4, a PGE<sub>2</sub> transporter both in glioma and colon cancer cells [13–15]. In the present work, we show that radiation can trigger PGE<sub>2</sub> synthesis in glioma without inducing caspase activity. This PGE<sub>2</sub> liberated participated in the survival and proliferation of surviving cancer cells by activating several pathways, including EGFR and  $\beta$ -catenin. Indeed, our results suggest that PGE<sub>2</sub> can substitute for EGF to promote survival of



irradiated cells. This observation is in agreement with numerous studies showing that accelerated repopulation during radiotherapy could be linked to the activation of EGFR and the subsequent activation of ERK/MAP kinase mitogenic pathways [28]. However, our results show also that PGE<sub>2</sub> under our conditions is a pro-survival factor and that irradiated cells released pro-proliferative factors that remain to be identified.

PGE<sub>2</sub> has also been shown to specifically reactivate the repopulation of normal cells by stimulating normal stem cells [32]. However, in our hands, we did not observe any change in the expression of stemness markers upon PGE<sub>2</sub> treatment in glioma primary cultures regardless of the molecular sub-class of GBM and independently of the proportion of CD133<sup>+</sup> cells.

The roles of PGE<sub>2</sub> in non targeted and targeted effects of ionizing radiations, especially in the inflammatory context [33], or on stem cells homeostasis [32] are not fully understood. Recently, COX2 and PGE<sub>2</sub> have been implicated in cancer progression but mixed results were obtained with COX2 inhibitors and radio-sensitization [34, 35]. Our results provide a molecular mechanism, by which PGE<sub>2</sub> can sustain tumor growth and proliferation after tumor irradiation and support new alternative targets, such as EP2, to potentiate the effect of radiotherapy.

## MATERIALS AND METHODS

Unless stated otherwise, all cell culture material was obtained from Life Technologies (Cergy Pontoise, France) and chemicals were from Sigma-Aldrich (St. Louis, MO, USA).

### Cell culture

Human primary cultures were grown in defined medium (DMEM/HAM-F12, 2 mM L-glutamine, N2 and B27 supplement, 2 µg/ml heparin, 20 ng/ml EGF and 25 ng/ml bFGF, 100 U/ml penicillin and 100 µg/ml streptomycin and the U251-MG cell line was cultured in DMEM (4.5 g/L glucose), 10% fetal calf serum, 2 mM L-glutamine, 100 U/ml penicillin and 100 µg/ml streptomycin in an atmosphere of 5% CO<sub>2</sub> and 95% humidity.

### 3D-culture

Primary GBM cells ( $2.5 \times 10^3$ ) resuspended in 0.35% soft agar containing different compounds were layered on 0.5% agar. The soft agar layer was covered with media containing the compound to be tested. After 3 weeks, the cultures were scanned using a Leica DMI6000B and the Metamorph program.  $\gamma$ -irradiation was carried out in a Faxitron CP160 irradiator (Faxitron X-ray Corporation) at a dose rate of 1.48 Gy/min.

## ELISA

Quantity of phosphorylated and total protein was measured using the InstantOne ELISA kit (eBioscience) according to the manufacturer's instruction. Briefly, cells were lysed with 50 µL lysis buffer and incubated 1 h at room temperature with 50 µL antibody cocktail containing antibodies against total or phosphorylated forms and the peroxidase-labeled secondary antibodies. Colorimetric detection reagent (100 µl) was added and the reaction read at 450 nm.

### Protein lysates, immunoblotting and caspase activity

Total proteins were extracted in (25 mM Tris-HCl, pH 7.6, 150 mM NaCl, 1% NP40, 1% Na-deoxycholate, 0.1% SDS) supplemented with protease inhibitors. Protein concentration was determined using BCA protein assay (Sigma). Proteins were separated by SDS-PAGE, transferred onto PVDF membrane (Millipore, St Quentin-Yvelines, France) and revealed with ECL (Millipore). Antibodies that recognize actin (Millipore), Bax (BD Pharmingen, San Jose, CA, USA), Bcl-2 (BD Pharmingen), EGFR and pEGFR (Cell Signaling Technology, Denvers, MA, USA), Bad (Cell Signaling), EP1-4 (Cayman, Ann Arbor, MI, USA), caspase 3 (Santa Cruz Biotech, Santa Cruz CA, USA), GFAP (Calbiochem, Darmstadt, Germany), nestin (Millipore, Temecula, CA, USA), olig2 (Abcam, Cambridge, UK) and  $\beta$ -tubulin (Sigma-Aldrich) were used. HRP-conjugated secondary antibodies were from BioRad. The ImageJ64 software was used to quantify Western blot bands. Caspase 3 activity was determined using the fluorogenic substrate Ac-DEVD-AMC, as described in [14]. Note, for all the assays the cut-off limit of caspase 3 activation that induces cell death was determined at > 50 AU/mg protein.

### PGE<sub>2</sub> assay and immunodepletion

U251 cells ( $\times 10^5$ ) were seeded in 6 well plates. Complete medium was replaced by serum-free medium 24 h later and cells were  $\gamma$ -irradiated at the indicated intensity. Conditioned medium was recovered at indicated time points for PGE<sub>2</sub> measurement. PGE<sub>2</sub> assay was done according to the manufacturer's instructions (Amersham, GE Healthcare Europe, Velizy-Villacoublay, Fr). Cells were harvested and either assayed for cell viability or fixed and probed for active caspase 3 by flow cytometry (BD Pharmingen; 0.25 µg/10<sup>6</sup> cells). When indicated, conditioned medium was depleted of PGE<sub>2</sub> by filtration through PGE<sub>2</sub> affinity column according to the manufacturer (Cayman).

### Olink

Cells were fixed with 4% paraformaldehyde in PBS for 15 min at room temperature then permeabilized

with 0.1% SDS in PBS for 10 min at room temperature. Labeling was done according to the manufacturer's instructions (Duolink® *In Situ*, Sigma–Aldrich). Fluorescence was visualized using the Axiovert 200 M microscope (Zeiss, Le Perq, France) with the apotome module (×63 objective and numerical aperture 1.4). Quantification was done using ImageJ.

The patients data have been kept confidential according to the recommendations of the National French Committee for Ethics and names of primary cultures correspond to codes.

## ACKNOWLEDGMENTS

This work was supported by grants from LABEX IGO, INSERM and CNRS. We thank Philippe Hulin from the MicroPixel platform for expert assistance.

## Abbreviations

CSC: cancer stem cells; Cyclooxygenase 2: Cox2; PGE<sub>2</sub>: Prostaglandin E2; EP2: Prostaglandin E receptor 2; EP4: prostaglandin E receptor 4; TMZ: temozolomide; RT: radiotherapy.

## CONFLICT OF INTEREST

The authors declare that they have no conflict of interest.

## Editorial note

This paper has been accepted based in part on peer-review conducted by another journal and the authors' response and revisions as well as expedited peer-review in *Oncotarget*.

## REFERENCES

1. Stupp R, Mason WP, van den Bent MJ, Weller M, Fisher B, Taphoorn MJ, Belanger K, Brandes AA, Marosi C, Bogdahn U, Curschmann J, Janzer RC, Ludwin SK, et al. Radiotherapy plus concomitant and adjuvant temozolomide for glioblastoma. *N Engl J Med*. 2005; 352:987–996.
2. Hegi ME, Diserens AC, Gorlia T, Hamou MF, de Tribolet N, Weller M, Kros JM, Hainfellner JA, Mason W, Mariani L, Bromberg JE, Hau P, Mirimanoff RO, et al. MGMT gene silencing and benefit from temozolomide in glioblastoma. *N Engl J Med*. 2005; 352:997–1003.
3. Bao S, Wu Q, McLendon RE, Hao Y, Shi Q, Hjelmeland AB, Dewhirst MW, Bigner DD, Rich JN. Glioma stem cells promote radioresistance by preferential activation of the DNA damage response. *Nature*. 2006; 444:756–760.
4. Ke C, Tran K, Chen Y, Di Donato AT, Yu L, Hu Y, Linskey M, Wang P, Limoli C, Zhou Y. Linking differential radiation responses to glioma heterogeneity. *Oncotarget*. 2014; 5:1657–1665.
5. Shu HK, Kim MM, Chen P, Furman F, Julin CM, Israel MA. The intrinsic radioresistance of glioblastoma-derived cell lines is associated with a failure of p53 to induce p21(BAX) expression. *Proc Natl Acad Sci U S A*. 1998; 95:14453–14458.
6. Kim Y, Kim KH, Lee J, Kim M, Lee SJ, Park K, Yang H, Jin J, Joo KM, Lee J, Nam DH. Wnt activation is implicated in glioblastoma radioresistance. *Lab Invest*. 2012; 92:466–473.
7. Wang J, Wakeman TP, Lathia JD, Hjelmeland AB, Wang XF, White RR, Rich JN, Sullenberger BA. Notch promotes radioresistance of glioma stem cells. *Stem Cells*. 2010; 28:17–28.
8. Chakravarti A, Dicker A, Mehta M. The contribution of epidermal growth factor receptor (EGFR) signaling pathway to radioresistance in human gliomas: a review of preclinical and correlative clinical data. *Int J Radiat Oncol Biol Phys*. 2004; 58:927–931.
9. Anderson JC, Duarte CW, Welaya K, Rohrbach TD, Bredal M, Yang ES, Choradia NV, Thottassery JV, Yancey Gillespie G, Bonner JA, Willey CD. Kinomic exploration of temozolomide and radiation resistance in Glioblastoma multiforme xenolines. *Radiother Oncol*. 2014; 111:468–474.
10. Galluzzi L, Kepp O, Kroemer G. Caspase-3 and prostaglandins signal for tumor regrowth in cancer therapy. *Oncogene*. 2012; 31:2805–2808.
11. Huang Q, Li F, Liu X, Li W, Shi W, Liu FF, O'Sullivan B, He Z, Peng Y, Tan AC, Zhou L, Shen J, Han G, et al. Caspase 3-mediated stimulation of tumor cell repopulation during cancer radiotherapy. *Nat Med*. 2011; 17:860–866.
12. Sheng H, Shao J, Morrow JD, Beauchamp RD, DuBois RN. Modulation of apoptosis and Bcl-2 expression by prostaglandin E2 in human colon cancer cells. *Cancer Res*. 1998; 58:362–366.
13. Laliere L, Cartron PF, Pedelaborde F, Olivier C, Loussouarn D, Martin SA, Meflah K, Menanteau J, Vallette FM. Increase in PGE2 biosynthesis induces a Bax dependent apoptosis correlated to patients' survival in glioblastoma multiforme. *Oncogene*. 2007; 26:4999–5009.
14. Laliere L, Cartron PF, Olivier C, Logé C, Bougras G, Robert JM, Oliver L, Vallette FM. Prostaglandins antagonistically control Bax activation during apoptosis. *Cell Death Differ*. 2011; 18:528–537.
15. Laliere L, Pedelaborde F, Braud C, Menanteau J, Vallette FM, Olivier C. Increase in intracellular PGE2 induces apoptosis in Bax-expressing colon cancer cells. *BMC Cancer*. 2011; 11:153.
16. Verhaak RG, Hoadley KA, Purdom E, Wang V, Qi Y, Wilkerson MD, Miller CR, Ding L, Golub T, Mesirov JP, Alexe G, Lawrence M, O'Kelly M, et al. Integrated genomic analysis identifies clinically relevant subtypes of glioblastoma characterized by abnormalities in PDGFRA, IDH1, EGFR, and NF1. *Cancer Cell*. 2010; 17:98–110.

17. Cartron PF, Loussouarn D, Campone M, Martin SA, Vallette FM. Prognostic impact of the expression/phosphorylation of the BH3-only proteins of the BCL-2 family in glioblastoma multiforme. *Cell Death Dis.* 2012; 3:e421.
18. Andreasson K. Emerging roles of PGE2 receptors in models of neurological disease. *Prostaglandins Other Lipid Mediat.* 2010; 91:104–112.
19. Jiang J, Dingleline R. Prostaglandin receptor EP2 in the crosshairs of anti-inflammation, anti-cancer, and neuroprotection. *Trends Pharmacol Sci.* 2013; 34:413–423.
20. Li F, Huang Q, Chen J, Peng Y, Roop DR, Bedford JS, Li CY. Apoptotic cells activate the “phoenix rising” pathway to promote wound healing and tissue regeneration. *Sci Signal.* 2010; 3:ra13.
21. Pai R, Soreghan B, Szabo IL, Pavelka M, Baatar D, Tarnawski AS. Prostaglandin E2 transactivates EGF receptor: a novel mechanism for promoting colon cancer growth and gastrointestinal hypertrophy. *Nat Med.* 2002; 8:289–293.
22. Shao J, Evers BM, Sheng H. Prostaglandin E2 synergistically enhances receptor tyrosine kinase-dependent signaling system in colon cancer cells. *J Biol Chem.* 2004; 279:14287–14293.
23. Söderberg O, Leuchowius KJ, Gullberg M, Jarvius M, Weibrecht I, Larsson LG, Landegren U. Characterizing proteins and their interactions in cells and tissues using the *in situ* proximity ligation assay. *Methods.* 2008; 45:227–232.
24. Liang X, So YH, Cui J, Ma K, Xu X, Zhao Y, Cai L, Li W. The low-dose ionizing radiation stimulates cell proliferation via activation of the MAPK/ERK pathway in rat cultured mesenchymal stem cells. *J Radiat Res.* 2011; 53:380–386.
25. Li B, Yuan M, Kim IA, Chang CM, Bernhard EJ, Shu HK. Mutant epidermal growth factor receptor displays increased signaling through the phosphatidylinositol-3 kinase/AKT pathway and promotes radioresistance in cells of astrocytic origin. *Oncogene.* 2004; 23:4594–4602.
26. Castellone MD, Teramoto H, Williams BO, Druey KM, Gutkind JS. Prostaglandin E2 promotes colon cancer cell growth through a Gs-axin-beta-catenin signaling axis. *Science.* 2005; 310:1504–1510.
27. Gratas C, Séry Q, Rabé M, Oliver L, Vallette FM. Bak and Mcl-1 are essential for temozolomide induced cell death in human glioma. *Oncotarget.* 2014; 5:2428–2435.
28. Kim JJ, Tannock IF. Repopulation of cancer cells during therapy: an important cause of treatment failure. *Nat Rev Cancer.* 2005; 5:516–525.
29. Fowler JF. Rapid repopulation in radiotherapy: a debate on mechanism. The phantom of tumor treatment—continually rapid proliferation unmasked. *Radiother Oncol.* 1991; 22:156–158.
30. Witte L, Fuks Z, Haimovitz-Friedman A, Vlodaysky I, Goodman DS, Eldor A. Effects of irradiation on the release of growth factors from cultured bovine, porcine, and human endothelial cells. *Cancer Res.* 1989; 49:5066–5072.
31. Higgins DM, Wang R, Milligan B, Schroeder M, Carlson B, Pokorny J, Cheshier S, Meyer F, Weissman I, Sarkaria J, Henley J. Brain tumor stem cell multipotency correlates with nanog expression and extent of passaging in human glioblastoma xenografts. *Oncotarget.* 2013; 4:792–801.
32. Durand EM, Zon LI. Newly emerging roles for prostaglandin E2 regulation of hematopoiesis and hematopoietic stem cell engraftment. *Curr Opin Hematol.* 2010; 17:308–12.
33. Mukherjee D, Coates PJ, Lorimore SA, Wright EG. Responses to ionizing radiations mediated by inflammatory mechanisms. *J. Pathol.* 2014; 232:289–299.
34. Ohneseit PA, Krebichl G, Dittmann K, Kehlbach R, Rodemann HP. Inhibition of cyclooxygenase-2 activity by celecoxib does not lead to radiosensitization of human prostate cancer cells *in vitro*. *Radiother Oncol.* 2007; 82:229–238.
35. Xu K, Wang L, Shu H. COX-2 overexpression increases malignant potential of human glioma cells through Id1. *Oncotarget.* 2013; 5:1241–1252.