



**HAL**  
open science

## **PPAR $\delta$ -mediated mitochondrial rewiring of osteoblasts determines bone mass**

Dorothea I H Müller, Cornelia Stoll, Katrin Palumbo-Zerr, Christina Böhm, Brenda Krishnacoumar, Natacha Ipseiz, Jule Taubmann, Max Zimmermann, Martin Böttcher, Dimitrios Mougiakakos, et al.

► **To cite this version:**

Dorothea I H Müller, Cornelia Stoll, Katrin Palumbo-Zerr, Christina Böhm, Brenda Krishnacoumar, et al.. PPAR $\delta$ -mediated mitochondrial rewiring of osteoblasts determines bone mass. *Scientific Reports*, 2020, 10 (1), pp.8428. 10.1038/s41598-020-65305-5 . inserm-02869506

**HAL Id: inserm-02869506**

**<https://inserm.hal.science/inserm-02869506v1>**

Submitted on 16 Jun 2020

**HAL** is a multi-disciplinary open access archive for the deposit and dissemination of scientific research documents, whether they are published or not. The documents may come from teaching and research institutions in France or abroad, or from public or private research centers.

L'archive ouverte pluridisciplinaire **HAL**, est destinée au dépôt et à la diffusion de documents scientifiques de niveau recherche, publiés ou non, émanant des établissements d'enseignement et de recherche français ou étrangers, des laboratoires publics ou privés.



OPEN

# PPAR $\delta$ -mediated mitochondrial rewiring of osteoblasts determines bone mass

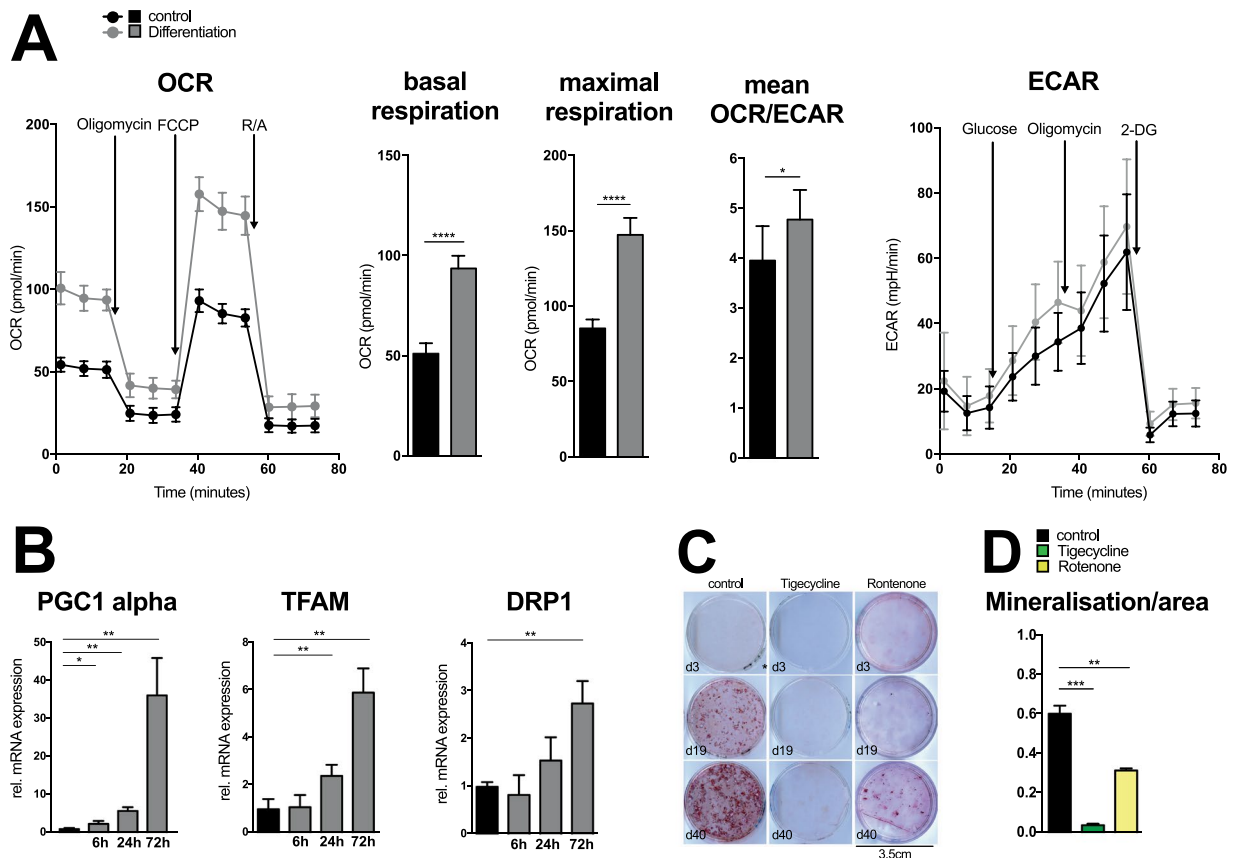
Dorothea I. H. Müller<sup>1,2</sup>, Cornelia Stoll<sup>1,2</sup>, Katrin Palumbo-Zerr<sup>1,2</sup>, Christina Böhm<sup>1,2</sup>, Brenda Krishnacoumar<sup>1,2</sup>, Natacha Ipseiz<sup>3</sup>, Jule Taubmann<sup>1,2</sup>, Max Zimmermann<sup>1,2</sup>, Martin Böttcher<sup>4</sup>, Dimitrios Mougkakos<sup>4</sup>, Jan Tuckermann<sup>5</sup>, Farida Djouad<sup>6</sup>, Georg Schett<sup>1</sup>, Carina Scholtyssek<sup>1,2,7</sup> & Gerhard Krönke<sup>1,2,7</sup>✉

Bone turnover, which is determined by osteoclast-mediated bone resorption and osteoblast-mediated bone formation, represents a highly energy consuming process. The metabolic requirements of osteoblast differentiation and mineralization, both essential for regular bone formation, however, remain incompletely understood. Here we identify the nuclear receptor peroxisome proliferator-activated receptor (PPAR)  $\delta$  as key regulator of osteoblast metabolism. Induction of PPAR $\delta$  was essential for the metabolic adaption and increased rate in mitochondrial respiration necessary for the differentiation and mineralization of osteoblasts. Osteoblast-specific deletion of PPAR $\delta$  in mice, in turn, resulted in an altered energy homeostasis of osteoblasts, impaired mineralization and reduced bone mass. These data show that PPAR $\delta$  acts as key regulator of osteoblast metabolism and highlight the relevance of cellular metabolic rewiring during osteoblast-mediated bone formation and bone-turnover.

Bone formation and bone remodeling represent highly energy demanding processes<sup>1</sup>. Especially the unique vascular architecture of long bones as well as large gradients in oxygen tension and nutrient supply impose metabolic challenges for bone resident cells<sup>2,3</sup>. Insights into the mechanisms that allow osteoblasts and osteoclasts the metabolic adaption to their specific microenvironment are therefore essential to understand both physiological and pathological bone turnover. Osteoblasts in long bones can sense low oxygen tension leading to a stabilization of hypoxia-induced factor (HIF) proteins, a process that controls both VEGF-dependent vascularization of bones and erythropoiesis within the bone marrow<sup>4,5</sup>. On a cellular level, HIF-1 $\alpha$ -driven glycolysis in osteoblasts also directly contributes to bone formation<sup>6</sup> and bone anabolic factors such as agonists of the Wnt signaling pathway can stimulate aerobic glycolysis in osteoblasts<sup>7</sup>. However, osteoblasts were also shown to consume and utilize large amounts of fatty acids<sup>8,9</sup>. In accordance, osteogenic differentiation of mesenchymal stem cells (MSCs) was reported to be paralleled by an increased mitochondrial respiration, where levels of ATP derived from oxidative phosphorylation peak in association with the accumulation of mitochondria that can directly support differentiation of osteoblasts<sup>10,11</sup>.

These findings show that especially differentiating and mineralizing osteoblasts utilize both aerobic glycolysis and oxidative phosphorylation, indicating that these cells need to adjust their bioenergetic machinery in order to adapt to transient metabolic challenges such as low and high oxygen and varying nutrient supply. The exact reason for the usage of divergent energy pathways as well as the *in vivo* relevance of the observed increase in oxidative phosphorylation in differentiating osteoblasts remains unclear. Notably, glucose transporter 1 (Glut1)-mediated glucose uptake has been recognized as an important signal that initiates early osteoblast commitment by regulating the stability of Runx-related transcription factor 2 (Runx2)<sup>12</sup>. The signals that control the induction of

<sup>1</sup>Department of Internal Medicine 3, Rheumatology and Immunology, Friedrich Alexander University Erlangen-Nürnberg and Universitätsklinikum Erlangen, Erlangen, Germany. <sup>2</sup>Nikolaus Fiebiger Center of Molecular Medicine, University of Erlangen-Nuremberg, Erlangen, Germany. <sup>3</sup>Systems Immunity Research Institute, Heath Park, Cardiff University, Cardiff, United Kingdom. <sup>4</sup>Department of Internal Medicine 5, Hematology and Oncology, Friedrich Alexander University Erlangen-Nürnberg and Universitätsklinikum Erlangen, Erlangen, Germany. <sup>5</sup>Institute of Comparative Molecular Endocrinology, University of Ulm, Ulm, Germany. <sup>6</sup>IRMB, University Montpellier, INSERM, Montpellier, France. <sup>7</sup>These authors contributed equally: Carina Scholtyssek and Gerhard Krönke. ✉e-mail: [gerhard.kronke@uk-erlangen.de](mailto:gerhard.kronke@uk-erlangen.de)



**Figure 1.** Osteoblast differentiation is dependent on an increase in oxidative phosphorylation. **(A)** Oxygen consumption rate (OCR) and the extracellular acidification rate (ECAR) including basal and maximal respiration rate measured with extracellular flux (XF) analyzer in freshly isolated calvarial osteoblasts cultured in regular growth medium (black) and differentiation medium (grey) for 24 hours ( $n = 9$  each). **(B)** Real-time PCR analysis of mRNA expressions normalized to  $\beta$ -actin in calvarial osteoblasts cultured in regular growth media (black) and differentiation media (grey) for 6, 24 and 72 hours ( $n = 3$ ). **(C)** Alizarine Red staining of calvarial osteoblasts cultured in osteoblastic differentiation media supplemented with 10 ng/ml Wnt3a and conditionally supplemented with vehicle (control), 30  $\mu$ M tigecycline or 20 nM Rotenone at day 3, 19 and 40 of culture (representative for  $n = 3$ ). **(D)** Quantitative analysis of mineralized areas of alizarine red staining of calvarial osteoblasts supplemented with 10 ng/ml Wnt3a and conditionally supplemented with 30  $\mu$ M Tigecycline (green) or 20 nM Rotenone (yellow) cultured in osteoblastic differentiation media for 40 days ( $n = 3$ ). \* $P \leq 0.05$ , \*\* $P \leq 0.01$ , \*\*\* $P \leq 0.005$  using two-tailed Student's t-test.

mitochondrial respiration dominating during later stages of osteoblast differentiation and mineralization, in turn, have remained elusive.

## Results

**Osteoblast differentiation is dependent on an increase in oxidative phosphorylation.** To determine the metabolic requirements for regular osteoblast differentiation, we initially performed an extracellular flux analysis of in vitro cultured primary osteoblasts and their precursors. We compared the metabolic profiles of osteoblast precursors during steady state and upon initiation of osteoblast differentiation. These experiments confirmed a significantly increased oxygen consumption and oxidative phosphorylation of differentiating osteoblasts (Fig. 1A). Although the glycolytic activity slightly increased as well, this metabolic adaption resulted in an increase in the ratio between oxygen consumption rate (OCR, an indicator for mitochondrial respiration) and the extracellular acidification rate (ECAR, an indicator for glycolysis), suggestive of a robust metabolic rewiring of differentiating osteoblasts. In accordance, we observed a time-dependent increase in the expression of multiple genes involved in the control of mitochondrial respiration, mitochondrial biogenesis and oxygen-dependent energy provision such as Peroxisome proliferator-activated receptor gamma coactivator 1 (PGC1) $\alpha$ , mitochondrial transcription factor A (TFAM) or dynamin-1-like protein (DRP)1 in differentiating osteoblasts (Fig. 1B). Pharmacologic inhibition of mitochondrial biogenesis by tigecycline<sup>13</sup> or of oxidative phosphorylation by rotenone, in turn, did not interfere with osteoblast viability, but dramatically diminished their differentiation and mineralization potential (Fig. 1C,D and Suppl. Fig. 1). These data indicated a global shift in the transcriptional program that controlled the cellular metabolic adaption during osteoblast differentiation and mineralization.

**The nuclear receptor PPAR $\delta$  mediates metabolic rewiring of osteoblasts.** PGC1 $\alpha$  is considered a master regulator of mitochondrial biogenesis and was among the most highly induced genes in differentiating osteoblasts. As PGC1 $\alpha$  serves as co-activator and interacts with various other transcription factors, we next assessed expression levels of genes encoding for proteins that represent known PGC1 $\alpha$  interaction partners involved in cellular metabolism and oxidative phosphorylation. This analysis identified peroxisome proliferator-activated receptor (PPAR) $\delta$  as one of the prominently expressed transcription factors in differentiating osteoblasts (Fig. 2A–C). PPAR $\delta$  belongs to the superfamily of nuclear receptors and acts as a ligand-dependent transcription factor that senses fatty acids and subsequently controls fatty acid oxidation, a process that primarily fuels mitochondrial respiration. We have previously identified PPAR $\delta$  as important regulator of Wnt signaling and osteoblast/osteoclast crosstalk<sup>14,15</sup>. Our current analysis showed that expression of PPAR $\delta$  gradually increased during early osteogenic differentiation, whereas expression levels of its family members PPAR $\alpha$  and PPAR $\gamma$  remained low (Fig. 2A–C). We additionally confirmed expression of PPAR $\delta$  on a protein level, which was induced during osteogenic differentiating of wild-type, but not in PPAR $\delta$ -deficient MSCs (Fig. 2B). In accordance, induction of PPAR $\delta$  was paralleled by induction of several known PPAR $\delta$  target genes such as carnitine palmitoyltransferase (CPT)-1 or pyruvate dehydrogenase kinase (PDK)4, with expression levels likewise increasing during osteoblast differentiation (Fig. 2D). As expected, chromatin immunoprecipitation experiments confirmed direct binding of PPAR $\delta$  to these known target genes also in osteoblasts (Fig. 2E). Next, we sought to determine whether induction of PPAR $\delta$  indeed controlled the metabolic rewiring and increase in oxidative phosphorylation we had observed during osteogenic differentiation. We consequently analyzed the metabolic phenotype of PPAR $\delta$ -deficient osteoblasts. Absence of PPAR $\delta$  resulted in suppression of the expression of metabolic key genes such as PGC1 $\alpha$  (Fig. 2F). This finding indicated that PPAR $\delta$  controlled a transcriptional program that regulated mitochondrial metabolism and oxidative phosphorylation during osteoblast differentiation. The expression levels of metabolic genes such as glucose transporter (Glut)1 or Glut3, which are involved in glycolysis, in turn, were not suppressed, but even increased in PPAR $\delta$ -deficient osteoblasts (Fig. 2G). The PPAR $\delta$ -mediated regulation of genes involved in oxidative phosphorylation accordingly resulted in a reduced oxygen consumption and impaired oxidative phosphorylation in PPAR $\delta$ -deficient osteoblasts, whereas glycolysis was increased (Fig. 2H).

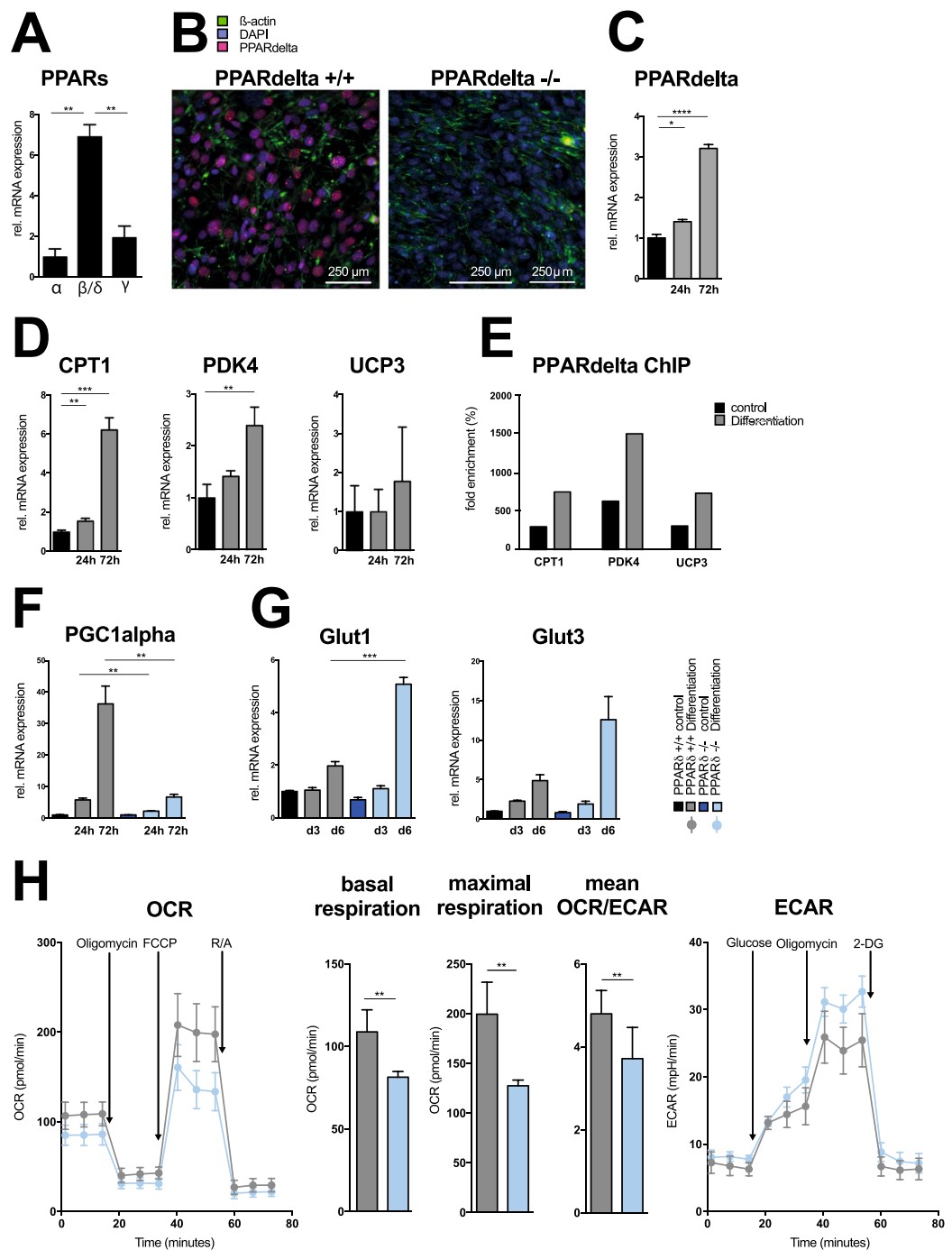
**Absence of PPAR $\delta$  in osteoblasts alters their differentiation and mineralization.** To understand whether osteoblast differentiation and/or mineralization were dependent on this PPAR $\delta$ -mediated metabolic rewiring, we studied osteoblast differentiation in the absence of PPAR $\delta$ . In comparison to wild-type osteoblast, PPAR $\delta$ -deficient cells showed a defective upregulation of osteoblast differentiation markers such as Runx2, osteocalcin (OCN), osterix (Osx), and alkaline phosphatase (ALP) (Fig. 3A). PPAR $\delta$ -deficient MSCs accordingly displayed a defective mineralization upon induction of osteogenic differentiation, demonstrating an important intrinsic role of the PPAR $\delta$ -controlled metabolic adaptation during osteoblast differentiation and function (Fig. 3B,C). To determine the *in vivo* relevance of the observed phenotype, we generated mice carrying an osteoblast-specific deletion of PPAR $\delta$ . Analysis of these *Runx2<sup>cre</sup>PPAR $\delta$ <sup>fl/fl</sup>* mice showed that these animals displayed a reduced bone mass in comparison to their wild type littermates with a significantly decreased bone volume/total volume, lower trabecular number and decreased bone mineral density in both tibia and spine (Fig. 3D–F). This low bone mass phenotype was associated with a reduced number of osteoblasts and a tendency towards a reduced mineral apposition and bone formation rate (Fig. 3G).

## Discussion

Nuclear receptors including the members of the PPAR family control pleiotropic processes throughout the body, including control of fatty acid and glucose metabolism in liver, adipose tissue and muscle<sup>16</sup>. Previous data have identified PPAR $\delta$  as important regulator of bone turnover and musculoskeletal homeostasis<sup>14,17</sup>. Although these studies determined a contribution of this nuclear receptor during muscle and bone biology as well as during osteoblast/osteoclast crosstalk, its exact molecular role during bone formation remained unclear. Our current data expand these insights on the involvement of this nuclear receptor in osteoblast biology and reveal an osteoblast-intrinsic role of this nuclear receptor during bone homeostasis *in vivo*. We show that PPAR $\delta$  regulates the metabolic adaptation and increased mitochondrial respiration, events that are required for efficient osteoblast differentiation and mineralization.

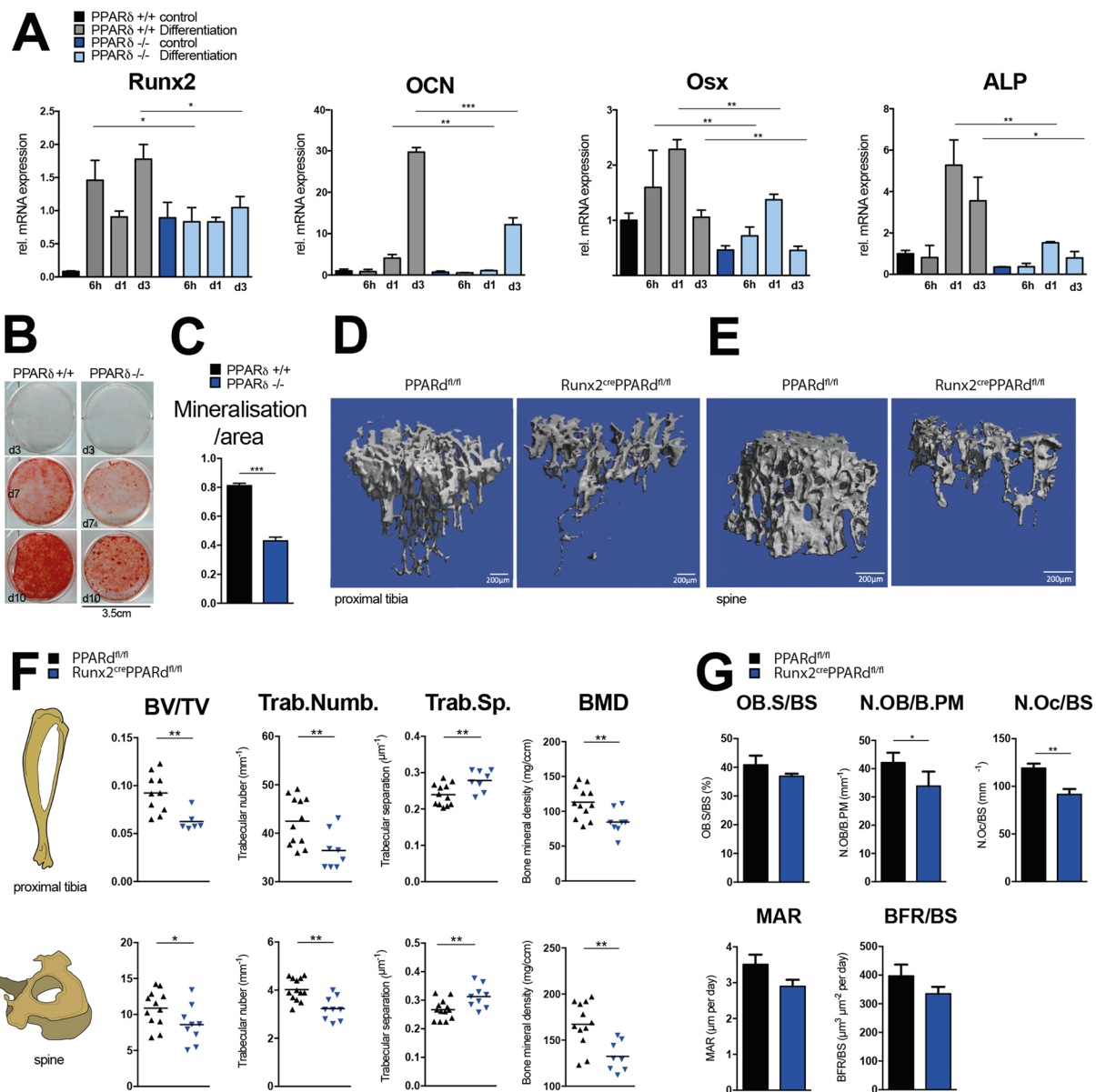
It remains to be determined to which extent the PPAR $\delta$ -mediated control of energy homeostasis accounts for the reduced mineralization and bone mass observed in *Runx2<sup>cre</sup>PPAR $\delta$ <sup>fl/fl</sup>* mice and whether additional effects exerted by this transcription factor contribute to this phenotype. Control of osteoblast-intrinsic mitochondrial respiration, however, seems to critically influence differentiation and mineralization of this cell type. Although mice that carry a Sox2-mediated complete depletion of PPAR $\delta$  also showed an altered OPG/RANKL ratio and an increased osteoclast differentiation<sup>14</sup>, the current Runx-2-mediated osteoblast-specific deletion of this nuclear receptor primarily resulted in osteoblast-intrinsic effects and reduced mineralization without increasing osteoclast differentiation, suggesting predominant effects of PPAR $\delta$  on osteoblast metabolism, differentiation and mineralization. The exact reason for this discrepancy is unclear, but might be due an additional PPAR $\delta$ -mediated control of the OPG/RANKL system in cells others than osteoblasts.

PPAR $\delta$  belongs to the nuclear receptor superfamily of transcription factors. Its close family member PPAR $\gamma$  acts as key factor during adipocyte differentiation. Although both PPAR $\gamma$  and PPAR $\delta$  sense a repertoire of lipophilic compounds and subsequently act as ligand-activated transcription factors, they dictate partially opposing cellular pathways such as fatty acid synthesis and fatty acid oxidation. Moreover, PPAR $\gamma$  and PPAR $\delta$  are differentially expressed in distinct cell types such as adipocytes and osteoblasts. Ligand-induced activation of these different PPAR family members accordingly exerts contrasting effects on both systemic energy and bone metabolism<sup>15</sup>. These findings highlight the importance of such metabolic sensors during cellular fate decision processes and



**Figure 2.** PPAR $\delta$ -mediated metabolic rewiring of osteoblasts. **(A)** Quantitative real-time PCR analysis of PPAR isoforms ( $\alpha$ ,  $\delta$  and  $\gamma$ ) normalized to  $\beta$ -actin in calvarial osteoblasts cultured in differentiation media for 24 hours ( $n = 3$ ). **(B)** Immunofluorescence microscopy of PPAR $\delta$  wildtype and PPAR $\delta$ -deficient MSCs cultured in differentiation medium for 7 days ( $\beta$ -actin, green; DAPI, blue; PPAR $\delta$ , red; representative for 3 independent experiments). **(C)** Quantitative real-time PCR analysis of PPAR $\delta$  mRNA expression normalized to  $\beta$ -actin of osteoblasts cultured in regular growth medium (black) and differentiation media (grey) for 24 and 72 hours ( $n = 3$ ). **(D)** Real-time PCR analysis of mRNA expressions of CPT, PDK4 and UCP3 normalized to  $\beta$ -actin in calvarial osteoblasts cultured in regular growth media (black) and differentiation media (grey) for 24 and 72 hours ( $n = 3$ ). **(E)** Chromatin immunoprecipitation (ChIP) assays determining binding of PPAR $\delta$  to the promoters of indicated genes in calvarial osteoblasts cultured in regular growth media (black) and differentiation media (grey) for 72 hours. **(F,G)** Real-time PCR analysis of mRNA expressions of **(F)** PGC1alpha and **(G)** Glut1 and Glut3 normalized to  $\beta$ -actin in PPAR $\delta$  wildtype (black and grey) and PPAR $\delta$ -deficient (dark and light blue) calvarial osteoblasts cultured in either regular growth media or differentiation media ( $n = 3$ ). **(H)** OCR, ECAR, basal and maximal respiration rate measured in freshly isolated PPAR $\delta$  wildtype (grey) and PPAR $\delta$ -deficient (light blue) calvarial osteoblasts cultured in differentiation medium for 24 hours ( $n = 3$ ). \* $P \leq 0.05$ , \*\* $P \leq 0.01$ , \*\*\* $P \leq 0.005$ , \*\*\*\* $P \leq 0.001$  using two-tailed Student's t-test.





**Figure 3.** Absence of PPAR $\delta$  in osteoblasts alters their differentiation and mineralization. **(A)** Real-time PCR analysis of mRNA expressions of Runx2, OCN, Osx and ALP normalized to  $\beta$ -actin in PPAR $\delta$  wildtype (black and grey) and PPAR $\delta$ -deficient (dark and light blue) calvarial osteoblasts cultured in either regular growth medium or differentiation media for 6, 24 and 72 hours ( $n = 3$ ). **(B)** Alizarine Red staining of PPAR $\delta$  wildtype and PPAR $\delta$ -deficient MSCs cultured in osteoblastic differentiation media supplemented with 10 ng/ml Wnt3a at day 3, 7 and 10 of culture ( $n = 3$ ). **(C)** Quantitative analysis of mineralized areas of alizarine red staining of PPAR $\delta$  wildtype (black) and PPAR $\delta$ -deficient (blue) MSCs cultured in osteoblastic differentiation medium for 10 days ( $n = 3$ ). **(D,E)**  $\mu$ CT images of **(D)** tibial and **(E)** vertebral bone of female wild type mice (PPAR $\delta^{fl/fl}$ ) or their female littermates carrying an osteoblast-specific deletion of PPAR $\delta$  (Runx2<sup>cre</sup>PPAR $\delta^{fl/fl}$ ) at 12 weeks of age. **(F)**  $\mu$ CT-based analysis of structural bone parameters including bone volume per total volume (BV/TV), trabecular number (Trab.Numb.), trabecular separation (Trab.Sp.) and bone mineral density (BMD) of tibial (upper panel) and vertebral (lower panel) bone of female wild type mice (black) or their female littermates carrying an osteoblast-specific deletion of PPAR $\delta$  (blue) at 12 weeks of age ( $n = 6-9$ ).  $\mu$ CT analysis was performed using the operating system “Open VMS” by SCANCO Medical (Version 6.1). **(G)** Histomorphometric analysis of percentage of surfaces covered by osteoblast (OB.S/BS), osteoblast number (N.OB/B.PM), osteoclast number (N.Oc/B.B.S), mineral apposition rate (MAR) and ratio of bone formation to bone surface (BFR/BS) counted in the proximal tibia of wild type mice (black) or their female littermates carrying an osteoblast-specific deletion of PPAR $\delta$  (blue) at 12 weeks of age ( $n = 3$ ). \* $P < 0.05$ , \*\* $P < 0.01$ , \*\*\* $P < 0.005$  using two-tailed Student’s t-test.

additionally provide an example where cellular metabolism and cellular differentiation of osteoblasts and other mesenchymal cell types are mutually interlinked.

## Methods

The authors confirm that all methods were carried out in accordance with relevant guidelines and regulations.

**Animals.** All animal experiments were approved and carried out in accordance with relevant guidelines and regulations by the government of Unterfranken, Peterplatz 1, 97070 Würzburg, Germany. Mice were maintained at the specific pathogen-free animal care facility (FPZ) of the University of Erlangen-Nuremberg and housed in a room at  $23 \pm 2$  °C, with  $50 \pm 10\%$  humidity and a 12-hour light/dark cycle (lights on from 08:00 a.m. to 08:00 p.m.). All mice were allowed free access to water and regular rodent chow. Mice with floxed PPAR $\delta$  allele exon (PPAR $\delta^{fl/fl}$ ) were kindly supplied from Béatrice Desvergne, Center of Integrative Genomics, Faculty of Biology and Medicine, University of Lausanne, Switzerland<sup>14</sup>. Runx2-Cre $^{tg/+}$  mice were a gift from Jan Tuckermann, Institute of Comparative Molecular Endocrinology, University of Ulm, Germany.

**Bone analysis.** We measured the structure of tibial and vertebral bones with a SCANCO Medical  $\mu$ CT 40 scanner to produce the images. Results were analyzed with SCANCO evaluation software for segmentation, three-dimensional morphometric analysis, density and distance parameters (SCANCO Medical AG). We performed histomorphometric analysis with the OsteoMeasure Analysis System (Osteo-Metrics) to determine osteoclast and osteoblast parameters as previously described<sup>18</sup>.

**Cell culture.** Isolation of calvarial osteoblasts was previously described<sup>18</sup>. For osteoblast monocultures, we differentiated freshly isolated calvarial osteoblast precursors in the presence of 5 mM  $\beta$ -glycerolphosphate (CALBIOCHEM #35675) and 100 mg/ml ascorbic acid (Sigma-Aldrich #A0278). MSCs were isolated and fully characterized from PPAR $\delta$  wildtype and PPAR $\delta$ -deficient mice bone-marrow as described previously<sup>19</sup> confirming the mesenchymal stem cell minimal criteria<sup>20</sup>. We plated both MSC and osteoblast cell suspensions ( $0.5 \times 10^6$  cells  $\text{cm}^{-2}$ ) in  $\alpha$ -MEM (GIBCO<sup>®</sup> by life technologies #32571-028) supplemented with 10% FBS (Biowest #S1580), 100 U/ml penicillin and 10 mg/ml streptomycin (PAN Biotech GmbH #P06-07100), at 37 °C in humidified atmosphere containing 5% CO<sub>2</sub> in air. Culture media were changed every 2 days. At subconfluence, we plated cells at a density of 5 000 cells  $\text{cm}^{-2}$ . MSC were used between passages 7 and 12.

**Immunohistochemistry.** PPAR $\delta$  immunohistochemical expression was evaluated MSC at day 7 after induction of osteoblast differentiation. We used polyclonal anti-PPAR $\beta$  from rabbit (Santa Cruz Biotechnology, #sc-7197) in a dilution of 1:100 in 2% BSA/PBS as previously described<sup>21</sup>. Slides were viewed under the fluorescence microscope ECLIPSE Ni-Series microscope, Nikon, USA.

**Mineralization assay.** To boost mineralization osteoblasts were cultured in a medium containing 10 ng/ml recombinant mouse Wnt3a protein (R&D #NP\_149122),  $\beta$ -glycerolphosphate (CALBIOCHEM #35675) and ascorbic acid (Sigma-Aldrich #A0278).

Cells were stimulated with Tigecycline 30  $\mu$ M. At indicated time points, cells were briefly washed with PBS and then fixed with 95% Ethanol for 30 minutes at room temperature. After briefly washing mineralized spots were dyed with 2% Alizarin Red S (Merck #A5533) in H<sub>2</sub>O (pH adjusted between 4 and 4.3) for 3 to 5 minutes. Then wells were washed with H<sub>2</sub>O for 5 to 8 times. Stained plates were dried and pictures were taken using the HP Scanjet G4050 and HP Scansoftware. Calcification areas were quantified with help of adobe photoshop CS6 software.

**Real-time PCR analysis.** We isolated total RNA from cells by using TRIZOL reagent (Invitrogen). Concentrations were measured via NanoDrop analysis. 1  $\mu$ g of isolated RNA was used for the first-strand complementary DNA synthesis (Amersham Biosciences), which was then used for SYBR Green-based quantitative RT-PCR as described previously<sup>22</sup>. Experiments were performed in triplicate. Normalized gene expression values for each sample were calculated as the ratio of expression of messenger RNA (mRNA) for the gene of interest to the expression of mRNA for  $\beta$ -actin using QuantStudio<sup>™</sup> 6 and 7 Flex Real-Time PCR System Software Base v1.x. The following real-time PCR primer sequences were used: *ALP*, 5'-CACGCGATGCAACACCACTCAGG-3' (sense) and 5'-GCATGTCCCCGGGCTCAAAGA-3' (antisense); *CPT1*, 5'-CCAGGCTACAGTGGGACATT-3' (sense) and 5'-GAACTTGCCCATGTCCTTGT-3' (antisense); *DRP1*, 5'-CTG ACG CTT GTG GAT TTA CC-3' (sense) and 5'-CCC TTC CCA TCA ATA CAT CC-3' (antisense); *Glut1*, 5'-TCAACACGGCCTTCACTG-3' (sense) and 5'-CACGATGCTCAGATAGGACATC-3' (antisense); *Glut3*, 5'-TTCTGGTCCGAATGCTCTTC-3' (sense) and 5'-AATGTCCTCGAAAGTCCTGC-3' (antisense); *OCN*, 5'-ACCCTGGCTGCGCTCTGTCTCT-3' (sense) and 5'-GATGCGTTTGTAGGCGGTCTTCA-3' (antisense); *Osx*, 5'-GGAGGCACAAAGAAGCCATACGC-3' (sense) and 5'-TGCAGGAGAGAGAGTCCATTG-3' (antisense); *PDK4*, 5'-CCT TCA CAC CTT CAC CAC AT-3' (sense) and 5'-AAA GAG GCG GTC AGT AAT CC-3' (antisense); *PGC1alpha*, 5'-TATGGAGTGACATAGAGTGTGCT-3' (sense) and 5'-CCACTCAATCCACCCAGAAAG-3' (antisense); *Ppara*, 5'-GGACCTTCGGCAGCTGGT-3' (sense) and 5'-TCGACTCGGTCTTCTTGATG-3' (antisense); *Ppard*, 5'-CTGAAGGGAAGGGGTAGAG-3' (sense) and 5'-CAGTCTGGATGCTGCTACA-3' (antisense); *Pparg*, 5'-CATCTGGCCCACTTC-3' (sense) and 5'-TCAAAGGAATGCGAGTGGTCTT-3' (antisense); *Runx2*, 5'-GACGAGGCAAGAGTTTACC-3' (sense) and 5'-GGACCGTCCACTGTCACTTT-3' (antisense); *TFAM*, 5'-GATGGCGCTGTTCCGG-3' (sense) and 5'-TGGATAGCTACCCATGCTGGA-3' (antisense) and *UCP3*, 5'-CCTACGACATCATCAAGGAGAAGTT-3' (sense) and 5'-TCCAAAGGCAGAGACAAAGTGA-3' (antisense).

(antisense). Normalized gene expression values for each sample were calculated as the ratio of expression of mRNA of the gene of interest to the expression of mRNA for  $\beta$ -actin.

**Metabolic analysis.** The cells' bioenergetics were assessed using an XFe96 Extracellular Flux Analyzer (Seahorse Bioscience, North Billerica, MA) as well as corresponding kits (Agilent, Santa Clara, California, USA). Cells were seeded in an optimized concentration of 15 000 cells per well. One hour before performance of sea-horse experiment, cells were incubated at 37 °C in a CO<sub>2</sub>-free atmosphere. XF Mitochondrial Stress Test Kits (Agilent, #103015) and XF Glycolysis Stress Test Kits (Agilent, #103020) were utilized according to the user guide (Seahorse Bioscience) and as described before<sup>23</sup>. For the Mitochondrial Stress Test, basal oxygen consumption rate (OCR) (an indicator for mitochondrial respiration) and extracellular acidification rate (ECAR) (an indicator for lactic acid production or glycolysis) were analyzed. Next, OCR and ECAR responses toward the application of oligomycin (1  $\mu$ M), FCCP (2.5  $\mu$ M), and the combination of antimycin (3  $\mu$ M) and rotenone (3  $\mu$ M) were evaluated. For Glycolysis Stress Test, OCR and ECAR were detected. Then, OCR and ECAR responses toward the application of Glucose (100 mM), Oligomycin (100  $\mu$ M) and 2-DG (500 mM) were evaluated.

**Chromatin immunoprecipitation (ChIP) assays.** To verify the binding of PPAR $\delta$  on selected promoters, ChIP assays were performed according to manufacturer instructions using the ChIP-IT<sup>®</sup> Express Chromatin Immunoprecipitation Kit (#53008, Active Motif, CA, USA). 25  $\mu$ g of sonicated chromatin extract were incubated with 3.4  $\mu$ g specific antibodies against PPAR $\delta$  (#ab178866, Abcam, Cambridge, MA, USA) or normal rabbit IgG antibodies (#sc-2027, Santa Cruz Biotechnology, CA, USA). After purification of DNA using Chromatin IP DNA Purification Kit (Active Motif, #58002) qPCR reactions were carried out on specific genomic regions using SYBR Green (Bio-Rad, USA). The resulting signals were normalized for primer efficiency by carrying out qPCR for each primer pair using the genomic input DNA. For positive control ChIP H3K36me3 antibody was used.

The following primers were used in these ChIP assays: PPRE on UCP3 promoter 5'-TGTGTTGCAGACAGAAGATGG-3' (sense) and 5'-ACCCCTCGTTTTACCAAAAAGCAG-3' (antisense); PPRE on CTP1 promoter 5'-TGCTAGAGATCAGTCGGTGAG-3' (sense) and 5'-CTTGAACCTCAGAAATCCGCCTG-3' (antisense) and PPRE on PDK4 promoter 5'-GTCCACTAAACAGCAGAGCAC-3' (sense) and 5'-GAAAGTCATAGATGACGGTGG-3' (antisense).

**Statistical analyses.** All data are presented as mean  $\pm$  SEM. Tests for statistical significance were performed with Student's *t* test using GraphPad Prism Version 5 (GraphPad Prism Software Inc. La Jolla, California, USA). *P* < 0.05 was considered as significant.

Received: 3 December 2019; Accepted: 27 April 2020;

Published online: 21 May 2020

## References

- Karner, C. M. & Long, F. Wnt signaling and cellular metabolism in osteoblasts. *Cell Mol. Life Sci.* **74**(9), 1649–1657 (2017).
- Wan, C. *et al.* Role of HIF-1 $\alpha$  in skeletal development. *Ann. N. Y. Acad. Sci.* **1192**, 322–6 (2010).
- Grüneboom, A. *et al.* A network of trans-cortical capillaries as mainstay for blood circulation in long bones. *Nat. Metab.* **1**(2), 236–250 (2019).
- Wang, Y. *et al.* The hypoxia-inducible factor  $\alpha$  pathway couples angiogenesis to osteogenesis during skeletal development. *J. Clin. Invest.* **117**(6), 1616–26 (2007).
- Wan, C. *et al.* Activation of the hypoxia-inducible factor-1 $\alpha$  pathway accelerates bone regeneration. *Proc. Natl Acad. Sci. USA* **105**(2), 686–91 (2008).
- Regan, J. N. *et al.* Up-regulation of glycolytic metabolism is required for HIF1 $\alpha$ -driven bone formation. *Proc. Natl Acad. Sci. USA* **111**(23), 8673–8 (2014).
- Esen, E. *et al.* WNT-LRP5 signaling induces Warburg effect through mTORC2 activation during osteoblast differentiation. *Cell Metab.* **17**(5), 745–55 (2013).
- Adamek, G. *et al.* Fatty acid oxidation in bone tissue and bone cells in culture. *Charact. hormonal influences. Biochem. J.* **248**(1), 129–37 (1987).
- Niemeier, A. *et al.* Uptake of postprandial lipoproteins into bone *in vivo*: impact on osteoblast function. *Bone* **43**(2), 230–7 (2008).
- Chen, C. T. *et al.* Coordinated changes of mitochondrial biogenesis and antioxidant enzymes during osteogenic differentiation of human mesenchymal stem cells. *Stem Cell* **26**(4), 960–8 (2008).
- Komarova, S. V., Ataullakhanov, F. I. & Globus, R. K. Bioenergetics and mitochondrial transmembrane potential during differentiation of cultured osteoblasts. *Am. J. Physiol. Cell Physiol* **279**(4), C1220–9 (2000).
- Wei, J. *et al.* Glucose Uptake and Runx2 Synergize to Orchestrate Osteoblast Differentiation and Bone Formation. *Cell* **161**(7), 1576–1591 (2015).
- Skrtic, M. *et al.* Inhibition of mitochondrial translation as a therapeutic strategy for human acute myeloid leukemia. *Cancer Cell* **20**(5), 674–88 (2011).
- Scholysek, C. *et al.* PPAR $\beta$ / $\delta$  governs Wnt signaling and bone turnover. *Nat. Med.* **19**(5), 608–13 (2013).
- Ipeiz, N. *et al.* Adopted orphans as regulators of inflammation, immunity and skeletal homeostasis. *Swiss Med. Wkly.* **144**, w14055 (2014).
- Barish, G. D., Narkar, V. A. & Evans, R. M. PPAR $\delta$ : a dagger in the heart of the metabolic syndrome. *J. Clin. Invest.* **116**(3), 590–7 (2006).
- Fu, H. *et al.* Impaired musculoskeletal response to age and exercise in PPAR $\beta$ ( $-/-$ ) diabetic mice. *Endocrinology* **155**(12), 4686–96 (2014).
- Kleyer, A. *et al.* Liver X receptors orchestrate osteoblast/osteoclast crosstalk and counteract pathologic bone loss. *J. Bone Min. Res.* **27**(12), 2442–51 (2012).
- Bouffi, C. *et al.* IL-6-dependent PGE<sub>2</sub> secretion by mesenchymal stem cells inhibits local inflammation in experimental arthritis. *PLoS One* **5**(12), e14247 (2010).
- Dominici, M. *et al.* Minimal criteria for defining multipotent mesenchymal stromal cells. The International Society for Cellular Therapy position statement. *Cytotherapy* **8**(4), 315–7 (2006).
- Kronke, G. *et al.* R-spondin 1 protects against inflammatory bone damage during murine arthritis by modulating the Wnt pathway. *Arthritis Rheum.* **62**(8), 2303–12 (2010).



22. Kronke, G. *et al.* Oxidized phospholipids induce expression of human heme oxygenase-1 involving activation of cAMP-responsive element-binding protein. *J. Biol. Chem.* **278**(51), 51006–14 (2003).
23. Jitschin, R. *et al.* Mitochondrial metabolism contributes to oxidative stress and reveals therapeutic targets in chronic lymphocytic leukemia. *Blood* **123**(17), 2663–72 (2014).

### Acknowledgements

We thank A. Klej for excellent technical assistance. This work was supported by the Deutsche Forschungsgemeinschaft (DFG – FG 2886 “PANDORA” – TP05/03 to G.K., D.M. and G.S., the CRC1181-A03/A01 to G.K. and G.S.), CRC 1149 to J.T. (Tu220/14-1), the Emerging Field Initiative (EFI) of the Friedrich-Alexander University Erlangen-Nürnberg (FAU) and the STAEDTLER Stiftung (EFI\_Verbund\_Med\_05\_MIRACLE to G.K.), the Bundesministerium für Bildung und Forschung (BMBF) (METARTHROS to G.K. and G.S.) and the European Union (Horizon 2020 ERC-2014-StG 640087 - SOS to G.K and Horizon 2020 ERC-2018-SyG nanoSCOPE and RTCure to G.S.).

### Author contributions

D.M. designed the study, performed and interpreted experiments and wrote the manuscript. C.S., C.B., J.T., B.K. and M.Z. performed experiments, collected, and interpreted data. N.I. and F.D. provided important expertise and established the MSC culture. D.M. and M.B. established and performed the metabolic characterization of osteoblasts. J.T., G.S., C.S. and G.K. designed the study and experiments and wrote the manuscript. All authors read and commented on the manuscript.

### Competing interests

The authors declare no competing interests.

### Additional information

**Supplementary information** is available for this paper at <https://doi.org/10.1038/s41598-020-65305-5>.

**Correspondence** and requests for materials should be addressed to G.K.

**Reprints and permissions information** is available at [www.nature.com/reprints](http://www.nature.com/reprints).

**Publisher’s note** Springer Nature remains neutral with regard to jurisdictional claims in published maps and institutional affiliations.



**Open Access** This article is licensed under a Creative Commons Attribution 4.0 International License, which permits use, sharing, adaptation, distribution and reproduction in any medium or format, as long as you give appropriate credit to the original author(s) and the source, provide a link to the Creative Commons license, and indicate if changes were made. The images or other third party material in this article are included in the article’s Creative Commons license, unless indicated otherwise in a credit line to the material. If material is not included in the article’s Creative Commons license and your intended use is not permitted by statutory regulation or exceeds the permitted use, you will need to obtain permission directly from the copyright holder. To view a copy of this license, visit <http://creativecommons.org/licenses/by/4.0/>.

© The Author(s) 2020