



Amyloid- β , Tau, and Cognition in Cognitively Normal Older Individuals: Examining the Necessity to Adjust for Biomarker Status in Normative Data

Isabelle Bos, Stephanie J B Vos, Willemijn J Jansen, Rik Vandenberghe, Silvy Gabel, Ainara Estanga, Mirian Ecay-Torres, Jori Tomassen, Anouk den Braber, Alberto Lleó, et al.

► To cite this version:

Isabelle Bos, Stephanie J B Vos, Willemijn J Jansen, Rik Vandenberghe, Silvy Gabel, et al.. Amyloid- β , Tau, and Cognition in Cognitively Normal Older Individuals: Examining the Necessity to Adjust for Biomarker Status in Normative Data. *Frontiers in Aging Neuroscience*, 2018, 10, pp.193. 10.3389/fnagi.2018.00193 . inserm-02747767

HAL Id: inserm-02747767

<https://inserm.hal.science/inserm-02747767>

Submitted on 3 Jun 2020

HAL is a multi-disciplinary open access archive for the deposit and dissemination of scientific research documents, whether they are published or not. The documents may come from teaching and research institutions in France or abroad, or from public or private research centers.

L'archive ouverte pluridisciplinaire **HAL**, est destinée au dépôt et à la diffusion de documents scientifiques de niveau recherche, publiés ou non, émanant des établissements d'enseignement et de recherche français ou étrangers, des laboratoires publics ou privés.



Amyloid- β , Tau, and Cognition in Cognitively Normal Older Individuals: Examining the Necessity to Adjust for Biomarker Status in Normative Data

Isabelle Bos^{1*}, Stephanie J. B. Vos¹, Willemijn J. Jansen¹, Rik Vandenbergh^{2,3}, Silvy Gabel^{3,4}, Ainara Estanga⁵, Mirian Ecay-Torres⁵, Jori Tomassen⁶, Anouk den Braber^{6,7}, Alberto Lleó⁸, Isabel Sala⁸, Anders Wallin⁹, Petronella Kettunen^{9,10}, José L. Molinuevo^{11,12}, Lorena Rami¹¹, Gaël Chetelat¹³, Vincent de la Sayette^{14,15}, Magda Tsolaki¹⁶, Yvonne Freund-Levi^{17,18,19}, Peter Johannsen²⁰, The Alzheimer's Disease Neuroimaging Initiative[†], Gerald P. Novak²¹, Inez Ramakers¹, Frans R. Verhey¹ and Pieter Jelle Visser^{1,6}

OPEN ACCESS

Edited by:

Merce Pallas,
University of Barcelona, Spain

Reviewed by:

Guido Gainotti,
Università Cattolica del Sacro Cuore,
Italy
Patrizia Giannoni,
University of Nîmes, France

*Correspondence:

Isabelle Bos
isabelle.bos@maastrichtuniversity.nl

[†] Data used in preparation of this article were partially obtained from The Alzheimer's Disease Neuroimaging Initiative (ADNI) database (adni.loni.usc.edu). As such, the investigators within the ADNI contributed to the design and implementation of ADNI and/or provided data but did not participate in analysis or writing of this report.

Received: 12 April 2018

Accepted: 07 June 2018

Published: 25 June 2018

Citation:

Bos I, Vos SJB, Jansen WJ, Vandenbergh R, Gabel S, Estanga A, Ecay-Torres M, Tomassen J, den Braber A, Lleó A, Sala I, Wallin A, Kettunen P, Molinuevo JL, Rami L, Chetelat G, de la Sayette V, Tsolaki M, Freund-Levi Y, Johannsen P, the Alzheimer's Disease Neuroimaging Initiative, Novak GP, Ramakers I, Verhey FR and Visser PJ (2018) Amyloid- β , Tau, and Cognition in Cognitively Normal Older Individuals: Examining the Necessity to Adjust for Biomarker Status in Normative Data. *Front. Aging Neurosci.* 10:193. doi: 10.3389/fnagi.2018.00193

¹ Department of Psychiatry and Neuropsychology, Alzheimer Center Limburg, School for Mental Health and Neuroscience, Maastricht University, Maastricht, Netherlands, ² University Hospital Leuven, Leuven, Belgium, ³ Laboratory for Cognitive Neurology, Department of Neurosciences, KU Leuven, Leuven, Belgium, ⁴ Alzheimer Research Centre, KU Leuven, Leuven, Belgium, ⁵ Center for Research and Advanced Therapies, CITA-Alzheimer Foundation, San Sebastián, Spain, ⁶ Alzheimer Center and Department of Neurology, Neuroscience Campus Amsterdam, VU University Medical Center, VU University Amsterdam, Amsterdam, Netherlands, ⁷ Department of Biological Psychology, VU University Amsterdam, Amsterdam, Netherlands, ⁸ Department of Neurology, Hospital de la Santa Creu i Sant Pau, Barcelona, Spain, ⁹ Section for Psychiatry and Neurochemistry, Institute of Neuroscience and Physiology, University of Gothenburg, Sahlgrenska Academy, Gothenburg, Sweden, ¹⁰ Nuffield Department of Clinical Neurosciences, University of Oxford, Oxford, United Kingdom, ¹¹ Alzheimer's Disease & Other Cognitive Disorders Unit, Hospital Clinic, Consorci Institut D'Investigacions Biomediques August Pi I Sunyer (IDIBAPS), Barcelona, Spain, ¹² Barcelona Beta Brain Research Center, Universitat Pompeu Fabra, Barcelona, Spain, ¹³ Institut National de la Santé et de la Recherche Médicale UMR-S U1237, Université de Caen-Normandie, GIP Cyceron, Caen, France, ¹⁴ Institut National de la Santé et de la Recherche Médicale U1077, Université de Caen Normandie, Ecole Pratique des Hautes Etudes, Caen, France, ¹⁵ CHU de Caen, Service de Neurologie, Caen, France, ¹⁶ 1st Department of Neurology, University General Hospital of Thessaloniki AHEPA, Thessaloniki, Greece, ¹⁷ Division of Clinical Geriatrics, Department of Neurobiology, Caring Sciences and Society (NVS), Karolinska Institutet, Stockholm, Sweden, ¹⁸ Department of Geriatric Medicine, Karolinska University Hospital Huddinge, Karolinska Institutet, Stockholm, Sweden, ¹⁹ Department of Psychiatry, Norrtälje Hospital Tiohundra, Norrtälje, Sweden, ²⁰ Danish Dementia Research Centre, Rigshospitalet, Copenhagen University Hospital, University of Copenhagen, Copenhagen, Denmark, ²¹ Janssen Pharmaceutical Research and Development, Titusville, NJ, United States

We investigated whether amyloid- β (A β) and tau affected cognition in cognitively normal (CN) individuals, and whether norms for neuropsychological tests based on biomarker-negative individuals would improve early detection of dementia. We included 907 CN individuals from 8 European cohorts and from the Alzheimer's disease Neuroimaging Initiative. All individuals were aged above 40, had A β status and neuropsychological data available. Linear mixed models were used to assess the associations of A β and tau with five neuropsychological tests assessing memory (immediate and delayed recall of Auditory Verbal Learning Test, AVLT), verbal fluency (Verbal Fluency Test, VFT), attention and executive functioning (Trail Making Test, TMT, part A and B). All test except the VFT were associated with A β status and this influence was augmented by age. We found no influence of tau on any of the cognitive tests. For the AVLT Immediate and Delayed recall and the TMT part A and B, we calculated norms in individuals without A β pathology (A β - norms), which we validated in an independent memory-clinic cohort by comparing their predictive accuracy to published norms. For memory tests, the A β - norms rightfully

identified an additional group of individuals at risk of dementia. For non-memory test we found no difference. We confirmed the relationship between A β and cognition in cognitively normal individuals. The A β - norms for memory tests in combination with published norms improve prognostic accuracy of dementia.

Keywords: Alzheimer's disease, amyloid-beta, tau, cognition, neuropsychological examination, normative data

INTRODUCTION

Neuropsychological examination is an essential element when diagnosing Alzheimer's disease (AD). Normative data for neuropsychological tests enable interpretation of test performance and are typically based on cognitively normal individuals categorized by age, gender and years of education. However, pathological changes related neurodegenerative diseases such as AD, could already be present in aged cognitively normal individuals (Dubois et al., 2016), and could lead to subtle changes in cognition (Vos et al., 2013; Mormino et al., 2014; Jansen et al., 2017). Still, norms for neuropsychological tests do not take AD biomarker status into account, which may lead to underdiagnosis of early stage AD. The aim of the present study was to test whether norms based on individuals without AD pathology, would improve the sensitivity of cognitive neuropsychological tests to identify early AD.

The predominant hypothesis is that beta-amyloid (A β) is the first biomarker to become abnormal in AD, followed by neuronal injury markers such as tau (Bateman et al., 2012; Jack et al., 2013). To our knowledge, only one study has investigated the effect of these AD biomarkers on cognitive norms (Hassenstab et al., 2016). In that study, it was found that individuals with normal levels of both A β and tau in cerebrospinal fluid (CSF) performed better on cognitive tests, but excluding these individuals with preclinical AD from normative datasets did not increase predictive accuracy of clinical decline in cognitively normal individuals (Hassenstab et al., 2016). However, A β and tau may independently impact cognitive performance in the preclinical stage in a test-specific manner. Also, it remains unknown whether biomarker negative norms would increase predictive accuracy of dementia in a memory clinic setting.

Hence in the present study, we first examined the independent effects of A β and tau on five frequently used neuropsychological tests in a large sample of cognitively normal individuals. A β was measured in CSF or on positron emission tomography (PET) and tau was measured in CSF. Subsequently, we calculated novel norms based on biomarker negative individuals for tests that were associated with AD biomarkers in the initial analyses. Lastly, we examined whether the use of these new norms could improve the identification of individuals at risk of progression to dementia among non-demented individuals from a memory clinic cohort.

METHODS

Test Dataset

Subjects

For the test dataset, 907 cognitively normal individuals were selected from eight cohorts of the European Medical

Information Framework for Alzheimer's disease (EMIF-AD) project: Barcelona St. Pau (Alcolea et al., 2014; Sala et al., 2017), EDAR (Reijs et al., 2017), Gipuzkoa Alzheimer Project (GAP) (Estanga et al., 2017), Gothenburg MCI study (Wallin et al., 2016), IDIBAPS (Fortea et al., 2010), IMAP+ (La Joie et al., 2014), Leuven (Adamczuk et al., 2015, 2016a,b), EMIF preclinical-AD study (Demuru et al., 2017), and from the American Alzheimer's Disease Neuroimaging Initiative (ADNI) study (Mueller et al., 2005) (Supplemental Table 1). Supplemental Table 2 shows an overview of the participating centers and the included number of subjects.

Inclusion Criteria

Inclusion criteria were: (1) age above 40 years; (2) no cognitive impairment at baseline (Supplemental Table 2 provides an overview of definitions of CN by cohort); (3) availability of an A β measurement in CSF or on amyloid positron emission tomography (PET); and (4) a baseline neuropsychological examination. From the EMIF preclinical-AD study we randomly selected one individual per monozygotic twin pair, to avoid duplication bias.

Neuropsychological Examination

Neuropsychological examination was performed according to the routine protocol at each site, including the Mini-Mental State Examination (MMSE; Folstein et al., 1975). For the current study we selected the Auditory Verbal Learning Test (AVLT) immediate and delayed recall (Rey, 1958) as a measure of immediate and delayed memory. The AVLT immediate recall score is the sum of 5 learning trials of a 15 word list, scores range from 0 to 75. In the AVLT delayed recall, the 15 word list has to be recalled after 20 min, so scores range from 0 to 15. The Verbal Fluency Test (VFT) (Lezak et al., 2004) was used as a measure of verbal fluency, in which a person has to name as many animals as possible within 1 min. The Trail Making Test (TMT) part A was used as measure of attention, in which a person has to connect numbers (1–25) in ascending order, as quickly as possible (Reitan, 1979). TMT part B was used as a measure of executive functioning in which a person should alternate between connecting numbers and letters in ascending order, as quickly as possible. For TMT part A and B time in seconds was used as an outcome.

Biomarker Analyses

CSF biomarker assessments of A β 1-42, total tau (t-tau) and phosphorylated tau (p-tau) were performed according to the routine protocol in $n = 569$ individuals. For the four cohorts that used a PET scan to measure amyloid ($n = 338$), [^{18}F]flutemetamol or [^{18}F]AV45 PET scans were visually rated locally or the standardized uptake value (SUV) was calculated.

We used center-specific cut-offs to define abnormal biomarker values (Supplemental Table 2). Amyloid positivity ($A\beta+$) was defined as an abnormal amyloid profile in CSF or on amyloid PET. Since the concordance between t-tau and p-tau was not similar across cohorts, tau positivity (T+) was defined as both abnormal t-tau and abnormal p-tau in CSF (Supplemental Table 2).

Validation Dataset

To test whether the new norms improved prediction of dementia in a clinical setting, we used an independent dataset from the Maastricht Alzheimer Centre Limburg (ACL) cohort ($n = 1,070$), including individuals from the ongoing, longitudinal study of patients referred to the Maastricht Memory Clinic (Visser et al., 2006). For the current study, we selected 1,070 individuals based on the following inclusion criteria were: (1) age above 40 years; (2) no dementia diagnosis at baseline; (3) baseline data on at least one the following measures: AVLT immediate recall, AVLT delayed recall, VFT, TMT-A, or TMT-B; and (4) minimally one clinical follow-up, at least 6 months after the baseline diagnosis.

In the validation dataset no biomarker information was used, only cognitive test performance and progression to dementia at follow-up. As the Maastricht ACL cohort is a memory clinic cohort it contains individuals with subjective or objective cognitive impairment.

Cognitive Data

Cognitive data was available for the following neuropsychological tests: AVLT immediate and delayed recall, VFT, TMT-A, and TMT-B. Standardized scores (z-scores) based on published norms were already available as they are used in standard current clinical practice. These published norms were adjusted for age, gender, and years of education as described in previous publications: AVLT Immediate and Delayed recall (Van der Elst et al., 2005), VFT (Van der Elst et al., 2006), TMT part A and B (Schmand et al., 2003). In addition, we calculated novel z-scores based on biomarker negative norms derived from the test dataset.

Clinical Diagnosis

For the current study we used a clinical diagnosis at follow-up that was made as part of standard clinical practice. Standard clinical practice includes: clinical interview, neuropsychological examination (raw scores and z-scores based on published norms) and magnetic resonance imaging (MRI). As CSF collection is not part of routine clinical practice this was usually not used when clinical diagnoses were made. Data on CSF biomarkers was available in a small subgroup ($n = 104$, 10%). Z-scores based on biomarker negative normative data were not available at the time of clinical diagnosis. Diagnosis of dementia at follow-up was made according to Diagnostic and Statistical Manual of Mental Disorders, Fourth Edition (APA, 1994). Clinical etiological diagnoses for subtypes of dementia were made according to standardized clinical criteria for AD-type dementia (McKhann et al., 1984), vascular dementia (Roman et al., 1993), frontotemporal dementia (Neary et al., 1998), and Lewy body

dementia (McKeith et al., 1996). As etiological diagnoses were made without CSF biomarkers, we used a generic dementia diagnosis as main outcome measure.

Statistical Analyses

Analyses in Test Dataset

As tau was only available in a subgroup of the test dataset, demographics were compared between $A\beta-$ and $A\beta+$ groups, using *t*-tests for continuous and Chi-square for categorical variables. General linear mixed models, with random intercept at study level, were used to assess the influence of biomarkers on neuropsychological test performance using the following method: for each cognitive outcome measure (AVLT Immediate, AVLT Delayed, VFT, TMT-A, and TMT-B), we started with a standard model examining the influence of age, gender, and years of education on test performance (model 1). Next, we added $A\beta$ status (model 2 = model 1 + $A\beta$) and tau status (model 3 = model 2 + tau). In model 4, we entered all variables from model 3 and tested all two-way interactions between variables using a forward selection method. All non-significant interactions were removed from the model, significant interactions are shown in Table 2. Based on the significant predictors for each neuropsychological test, we calculated adjusted standardized scores (z-scores) using a regression-based approach based on only the biomarker negative individuals (Table 3). Age and year of education were entered as continuous variables, sex as a dichotomous variable (female = 0, male = 1). For the TMT-A and TMT-B the regression formulas were multiplied by -1 , such that a higher raw score indicated worse performance. We also performed sensitivity analyses regarding the method of defining $A\beta$ status (PET vs. CSF) by adding a dichotomous variable (0 = CSF, 1 = PET) to the statistical models.

Analyses in Validation Dataset

We classified the subjects in the validation dataset into three groups as illustrated in Figure 1: (1) individuals with a z-score ≥ -1.5 based on both published and $A\beta-$ norms: "Normal performance by both norms"; (2) individuals with a z-score ≥ -1.5 based on the published norms, but a z-score < -1.5 based on the $A\beta-$ norms: "Abnormal performance only by biomarker negative norms"; (3) individuals with a z-score < -1.5 based on both published and $A\beta-$ norms: "Abnormal by both norms." Cox proportional hazard models were used to calculate the relative risk of progression to dementia for the three groups, adjusted for age, gender, and years of education. Since no biomarkers were required for the diagnosis of AD-type dementia in the validation cohort, we used a dementia diagnosis with unspecified etiology as the main outcome measure. Lastly, we used a 2×2 contingency table to calculate odds ratios, sensitivity, specificity, positive predictive value (PPV), and negative predictive value (NPV) of progression to dementia, given an abnormal performance according to the biomarker negative norms and the published norms. When determining the short-term predictive accuracy measures of progression to dementia, we used dementia within two years (dichotomous variable) as an outcome. Statistical analyses were conducted using R Statistical Software (version

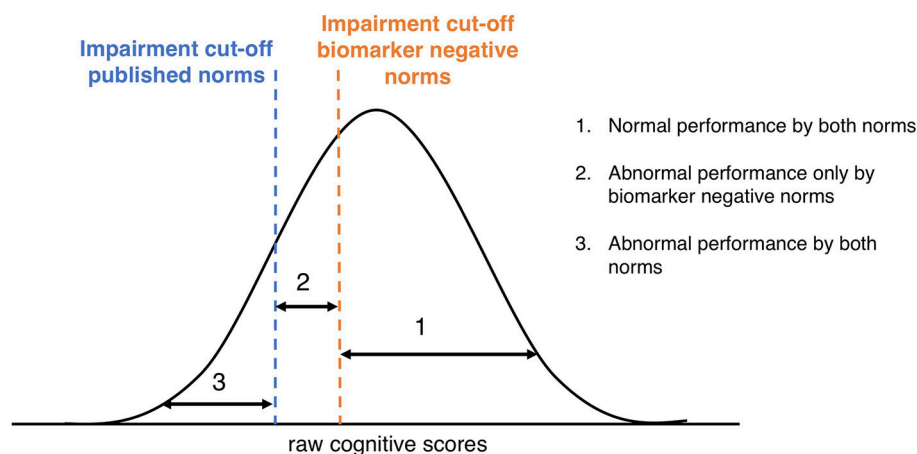


FIGURE 1 | Classification according to published norms and A β - norms. Graphical representation of distribution of raw cognitive scores and the different cut-points using published norms or A β - norms.

3.3.3) and SPSS version 24.0 (Chicago, IL, USA) with significance set at $p < 0.05$.

RESULTS

Test Dataset

The test dataset consisted of 907 individuals with a mean age of 68.0 (SD 9.1) years and an average of 14.7 (SD 3.7) years of education. Four hundred and eighty-one (53%) of these were female. In 334 (37%) individuals, A β was measured using PET. In the remaining 568 (63%) individuals A β status was measured using CSF and these individuals also had data available on CSF tau status. Two hundred and twenty-nine (25%) were A β +. Of the $n = 569$ that had data on tau status available, $n = 73$ (8%) were T+.

Table 1 shows the demographic and cognitive variables for A β - and A β + individuals. The A β + group was significantly older ($p < 0.001$), more likely to carry an APOE $\epsilon 4$ allele ($p < 0.001$) and had more often abnormal t-tau and p-tau levels ($p < 0.001$), compared to the A β - group. The groups did not differ in gender distribution ($p = 0.490$), years of education ($p = 0.907$) or baseline MMSE score ($p = 0.801$). Regarding cognition, the A β - group outperformed the A β + group on the AVLT Immediate ($p = 0.020$), AVLT delayed ($p < 0.001$), TMT-A ($p = 0.011$), and TMT-B ($p < 0.001$). There was no difference in performance on the VFT ($p = 0.178$; **Table 1**).

Influence of A β and Tau on Cognition

Table 2 shows the outcomes of the linear mixed models which tested the influence of demographics and biomarkers on neuropsychological test performance. Age and education were associated with performance on all tests, and female gender was associated with a better performance on memory tests only (**Table 2**). A β status was a significant predictor for the TMT part A and part B (all $p < 0.01$). When tau was added to the models (model 3), the associations between tau

TABLE 1 | Demographic and cognitive variables by A β status in test dataset.

	No. A β -/A β +	A β -	A β +	p -value
DEMOGRAPHICS				
Age, years	677/230	66.7 (14.7)	71.8 (8.6)	< 0.001
Female, n	677/230	358 (53%)	128 (56%)	0.466
Education, years	677/230	14.7 (3.7)	14.7 (3.6)	0.907
APOE- $\epsilon 4$ carrier, n	629/218	174 (28%)	105 (48%)	< 0.001
MMSE, score	677/230	29.0 (1.1)	28.9 (1.1)	0.637
Abnormal CSF t-tau, n	398/175	42 (11%)	45 (26%)	< 0.001
Abnormal CSF p-tau, n	395/174	100 (25%)	85 (49%)	< 0.001
COGNITIVE RAW SCORES				
AVLT Immediate, words recalled	440/183	45.5 (10.1)	43.5 (9.4)	0.020
AVLT Delayed, words recalled	439/182	8.8 (3.4)	7.7 (3.6)	< 0.001
VFT, words named	526/190	21.6 (5.7)	20.9 (5.5)	0.178
TMT-A, seconds	674/230	36.7 (14.6)	39.8 (17.7)	0.011
TMT-B, seconds	670/228	85.5 (38.3)	99.6 (62.1)	< 0.001

Results are mean (SD) or frequency (%): A β , amyloid-beta; APOE, Apolipoprotein E; AVLT, Auditory Verbal Learning Test; CSF, cerebrospinal fluid; MMSE, mini mental state examination; No, number; p-tau, phosphorylated tau; TMT, trail making test; t-tau, total tau; VFT, verbal fluency test.

status and test performance did not reach significance for any of the neuropsychological tests. In model 4, with 2-way interactions, we found that for the AVLT Immediate, AVLT Delayed and TMT-B the effect of A β depended on age, such that A β status predicted performance only at higher ages (model 4; interaction A β *age: AVLT Immediate $p = 0.048$; AVLT Delayed $p = 0.025$; TMT-B $p = 0.030$). The other 2-way interactions were all found insignificant. Additionally, we tested the influence of tau pathology on cognition without adding A β (model 3 without A β), and found no significant influence of tau on any of the cognitive tests (data not shown). The sensitivity analyses showed that the method of defining

A β status (CSF vs. PET) did not have an influence on the results.

A β - Norms

Next, we calculated standardized normative scores (z-scores) for the AVLT Immediate and Delayed recall and the TMT part A and B based on A β - individuals only. **Table 3** shows the equations to calculate the z-scores for the four cognitive measures, based on regression analyses.

Validation Dataset

To test the prognostic utility of the norms based on A β - individuals, we used a validation cohort of 1,070 memory clinic visitors with subjective or objective cognitive deficits. **Table 4** shows the characteristics of the validation cohort. The average age was 63.2 (*SD* 10.7) years and 41% were female (**Table 4**). Five hundred forty-seven (51%) were cognitively impaired in at least one cognitive domain, according to published norms. The average follow-up was 5.2 (*SD* 3.8) years and at the last follow-up visit, 255 (24%) had progressed to dementia (**Table 4**).

Prognostic Utility of A β - Norms

Table 5 shows the classifications (normal/abnormal) according to the A β - norms and the published norms for the AVLT Immediate, AVLT Delayed, TMT-A, and TMT-B. Depending on the assessed test, 38–64% of the individuals had a normal performance according to both norms, 16–38% had an abnormal performance only according to the A β - norms and 17–31% had an abnormal performance according to both norms. Individuals who performed abnormal according to both norms on the AVLT Immediate, AVLT Delayed, TMT-A, and TMT-B showed a faster progression rate to dementia, compared to individuals who performed normal according to the A β - norms ($p < 0.001$), and those performing abnormal according to both norms ($p < 0.001$; **Table 5**; **Figure 2**). In addition, individuals who performed abnormal only according to the A β - norms on the AVLT Immediate and AVLT delayed, progressed at a faster rate to dementia relative to individuals who performed normal according to both norms (AVLT Immediate $p < 0.001$; AVLT Delayed $p = 0.009$; **Table 5**; **Figure 2**). We also calculated hazard ratios for an abnormal performance, relative to a normal

TABLE 2 | Stepwise testing of linear mixed models including CSF biomarkers to predict cognitive test performance.

Outcome	Model	<i>n</i>	Age	Gender	Education	A β	Tau	A β * age
AVLT Immediate	Model 1	623	−0.44 ± 0.06***	−5.63 ± 0.73***	0.41 ± 0.11***			
	Model 2	623	−0.43 ± 0.06***	−5.64 ± 0.73***	0.40 ± 0.11***	−0.99 ± 0.82		
	Model 3	318	−0.38 ± 0.08**	−5.62 ± 1.09***	0.92 ± 0.19***	−0.26 ± 1.08	−0.74 ± 1.43	
	Model 4	318	−0.54 ± 0.11***	−5.67 ± 1.08***	0.91 ± 0.19***	20.51 ± 10.53*	−0.33 ± 1.44	−0.29 ± 0.14*
AVLT delayed	Model 1	621	−0.12 ± 0.02***	−1.49 ± 0.26***	0.07 ± 0.04			
	Model 2	621	−0.12 ± 0.02***	−1.49 ± 0.26***	0.07 ± 0.04	−0.41 ± 0.30		
	Model 3	317	−0.14 ± 0.03**	−1.09 ± 0.42*	0.17 ± 0.08*	−0.27 ± 0.41	−0.61 ± 0.55	
	Model 4	317	−0.20 ± 0.04***	−1.10 ± 0.41**	0.16 ± 0.07*	8.87 ± 4.08*	−0.43 ± 0.55	−0.13 ± 0.06*
VFT	Model 1	716	−0.16 ± 0.03***	−0.20 ± 0.41	0.36 ± 0.06***			
	Model 2	716	−0.16 ± 0.03***	−0.18 ± 0.41	0.35 ± 0.06***	0.41 ± 0.48		
	Model 3	414	−0.20 ± 0.04***	−0.07 ± 0.53	0.39 ± 0.08***	0.60 ± 0.56	−0.50 ± 0.75	
TMT-A	Model 1	904	0.69 ± 0.06***	0.81 ± 0.85	−0.71 ± 0.12***			
	Model 2	904	0.67 ± 0.06***	0.89 ± 0.85	−0.70 ± 0.12***	2.25 ± 1.01**		
	Model 3	567	0.61 ± 0.08***	−0.50 ± 1.08	−0.75 ± 0.17***	3.53 ± 1.21**	−0.73 ± 1.63	
TMT-B	Model 1	898	1.70 ± 0.16***	2.27 ± 2.22	−2.20 ± 0.32***			
	Model 2	898	1.63 ± 0.16***	2.52 ± 2.21	−2.17 ± 0.32***	7.47 ± 2.61**		
	Model 3	563	1.48 ± 0.20***	−0.66 ± 2.77	−2.16 ± 0.43***	10.24 ± 3.11**	−2.38 ± 3.11	
	Model 4	563	1.97 ± 0.30***	−0.71 ± 2.77	−2.16 ± 0.43***	−38.73 ± 22.74	−3.39 ± 4.17	0.70 ± 0.32*

Numbers are mixed model coefficients ± standard error. * $p < 0.05$, ** $p < 0.01$, *** $p < 0.001$. Model 4 was only added when any of the two-way interactions were significant. A β , amyloid-beta; AVLT, Auditory Verbal Learning Test; TMT-A, Trail Making Test part A; TMT-B, Trail Making Test part B; VFT, verbal fluency test.

TABLE 3 | Z-scores equations based on A β - individuals.

Neuropsychological test	Raw score range	<i>n</i>	Z-score equations
AVLT Immediate	0–75	440	Z-score = Raw score − (68.396 + −0.363 * AGE + −5.913 * SEX + 0.358 * EDUCATION)/3.048
AVLT delayed	0–15	439	Z-score = Raw score − (17.508 + −0.117 * AGE + −1.586 * SEX + 0.019 * EDUCATION)/1.796
TMT-A	15–100	674	Z-score = −1*(Raw score − (20.020 + 0.433 * AGE + −0.839 * EDUCATION)/3.587)
TMT-B	20–200	670	Z-score = −1*(Raw score − (37.609 + 1.251 * AGE + −2.486 * EDUCATION)/5.627)

AVLT Immediate, Auditory Verbal Learning Test sum of 5 learning trials; AVLT Delayed, Auditory Verbal Learning Test delayed recall; TMT-A, Trail Making Test part A; TMT-B, Trail Making Test part B. Variables are coded as follows: Age (continuous variable); Sex: Female = 0, Male = 1; Education: years of education (continuous variable).

performance, for published norms and A β - norms (Supplemental Table 3).

Short Term Predictive Accuracy of A β - and Published Norms

During two years of follow-up, 144 (14%) of the individuals in the validation dataset progressed to dementia. **Table 6** shows the short-term predictive accuracy measures of progression to dementia within two years since baseline visit, given an abnormal performance using the A β - norms or the published norms. When predicting risk of progression to dementia, odds were higher for A β - norms for AVLT Immediate, TMT-A and TMT-B compared to published norms. For the AVLT Delayed, the

odds of progression to dementia were higher for published norms compared to A β - norms. The A β - norms had a higher sensitivity, but a lower specificity compared to the published norms for all cognitive tests (**Table 6**). We also calculated the predictive accuracy of being A β + in the test dataset, results were comparable to the results with progression to dementia as an outcome (Supplemental Table 4).

Post-hoc Analyses

When repeating the survival analyses with progression to clinical diagnosis of AD-type dementia as an outcome, associations were similar (data not shown). Results were also comparable after exclusion of individuals for whom CSF biomarker data was available when the clinical diagnosis was made ($n = 104$). As we found in the analyses in the test cohort that age was related to the influence of A β on cognition, we also repeated the validation analyses in younger (≤ 70) and older (> 70) individuals separately. Associations also remained similar when stratifying by age (data not shown).

DISCUSSION

In a large cohort of cognitively normal individuals we tested the influence of A β and tau biomarkers on cognitive test performance. We found that A β influenced performance on all assessed cognitive tests, except for the VFT. The additional presence of tau did not further influence performance in any cognitive domain. For memory tests, we found that normative data based on only A β - individuals was more sensitive in identifying individuals at risk of a faster progression to dementia. For non-memory tests, we found no difference between the A β - norms and published norms.

A β , Tau, and Cognition

Our study provides additional evidence that in cognitively normal individuals an abnormal A β biomarker negatively influences cognitive performance in the domains of memory, attention and executive functioning (Mielke et al., 2016; Petersen et al., 2016; Baker et al., 2017). However, effects were small to moderate in particular in individuals below 70 years of age, which could explain why previous studies with smaller

TABLE 4 | Characteristics of validation dataset.

Characteristics	Total sample
n	1,070
Age, years	63.2 (10.7)
Female, n	437 (41%)
Education, years	10.5 (3.1)
Follow-up length, years	5.2 (3.8)
Progression to dementia, n	251 (24%)
- AD-type dementia, n	170 (16%)
- Vascular dementia, n	21 (2%)
- Frontotemporal dementia, n	5 (1%)
- Lewy Body or Parkinson dementia, n	5 (1%)
- Other dementia or unknown etiology, n	50 (5%)
Impairment in only one cognitive domain*, n	328 (31%)
Impairment in multiple cognitive domains*, n	219 (20%)
MMSE, score	27.9 (2.2)
AVLT Immediate, words recalled	37.9 (11.4)
AVLT Delayed, words recalled	6.9 (3.8)
VFT, words named	19.9 (6.3)
TMT-A, seconds	50.0 (19.0)
TMT-B, seconds	91.1 (44.8)

Results are mean (SD) or frequency (%). *Based on z-score < -1.5 derived from published normative data. AD, Alzheimer's disease; AVLT, Auditory Verbal Learning Test; MMSE, Mini Mental State Examination; TMT, Trail Making Test; VFT, Verbal Fluency Test.

TABLE 5 | Progression rate to dementia during follow-up for groups classified by published and A β - norms in validation dataset.

Test	(1) Normal performance by both norms		(2) Abnormal performance only by A β - norms				(3) Abnormal performance by both norms			
	n	HR	n	HR	95% CI	p-values group comparisons	n	HR	95% CI	p-values group comparisons
AVLT Immediate	403 (38%)	Ref	387 (36%)	2.58	1.8–3.7	(1) < 0.001 ; (3) < 0.001	280 (26%)	4.76	3.3–6.9	(1) < 0.001
AVLT Delayed	568 (53%)	Ref	167 (16%)	1.77	1.2–2.7	(1) 0.009; (3) < 0.001	335 (31%)	4.30	3.2–5.8	(1) < 0.001
TMT-A	304 (42%)	Ref	278 (38%)	1.20	0.8–1.7	(1) 0.298; (3) 0.001	145 (20%)	2.25	1.5–3.4	(1) < 0.001
TMT-B	419 (64%)	Ref	121 (19%)	1.30	0.9–1.9	(1) 0.197; (3) 0.003	114 (17%)	2.63	1.8–3.9	(1) < 0.001

Hazard Ratios (HR) and 95% Confidence intervals (CI) are calculated with the unimpaired group as a reference, adjusted for age, gender, and years of education: A β , amyloid- beta; AVLT Immediate, Auditory Verbal Learning Test sum of 5 learning trials; AVLT Delayed, Auditory Verbal Learning Test delayed recall; TMT-A, Trail Making Test part A; TMT-B, Trail Making Test part B; Ref, reference group. (1) p-value compared to group 1; (3) p-value compared to group 3.

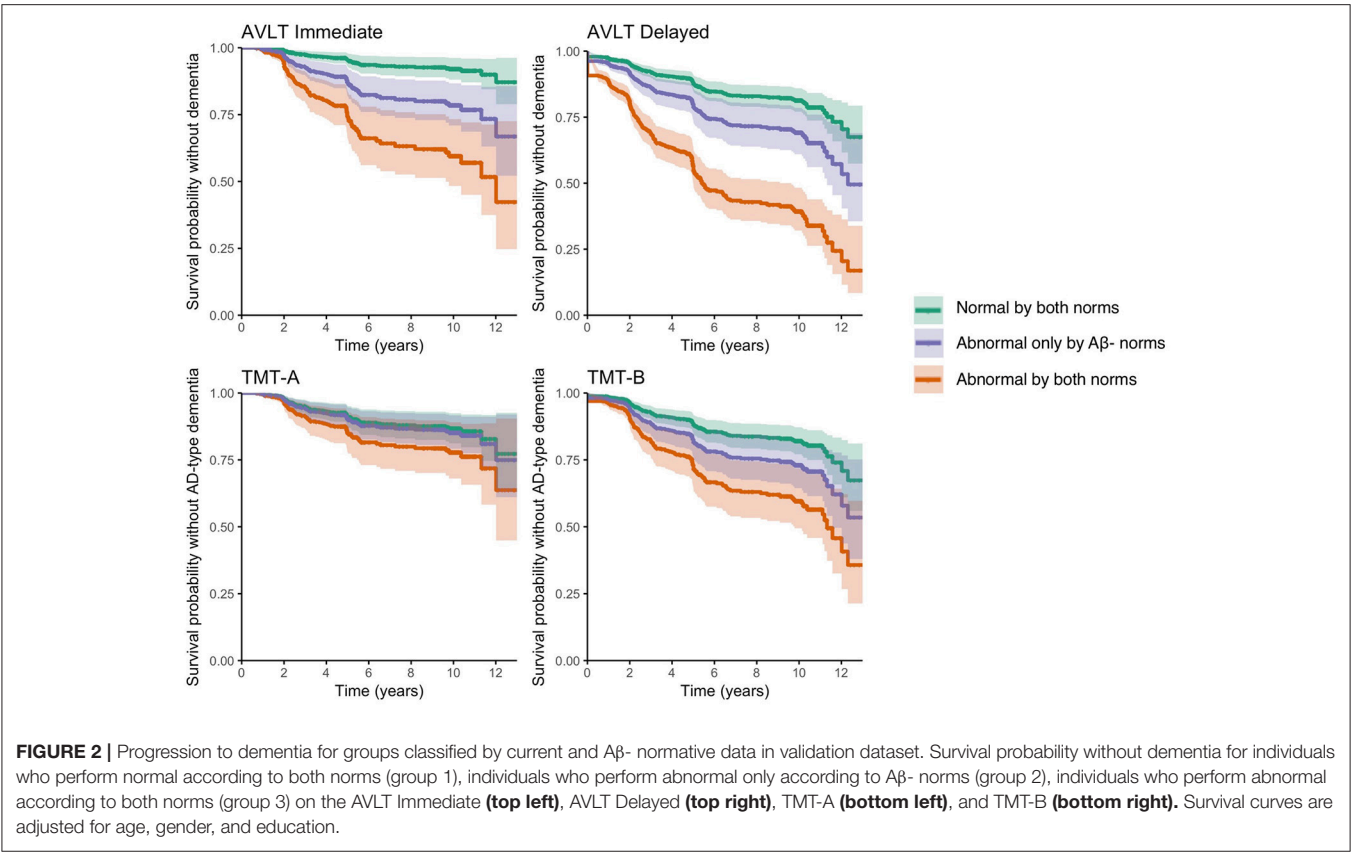


TABLE 6 | Predictive accuracy of progression to dementia within 2 years given an abnormal performance using Aβ- or published norms.

Test	Norms	<i>n</i> Normal/abnormal	OR	Sensitivity	Specificity	PPV	NPV
AVLT Immediate	Aβ- norms	406/664	4.72 (2.9–7.8)	0.87 (0.8–0.9)	0.42 (0.4–0.5)	0.19 (0.2–0.22)	0.95 (0.9–0.97)
	Published norms	790/280	3.45 (2.4–5.0)	0.50 (0.4–0.6)	0.78 (0.7–0.8)	0.26 (0.2–0.3)	0.91 (0.9–0.93)
AVLT Delayed	Aβ- norms	570/500	4.26 (2.8–6.4)	0.76 (0.7–0.8)	0.58 (0.5–0.6)	0.22 (0.2–0.3)	0.94 (0.9–0.96)
	Published norms	735/335	6.43 (4.4–9.4)	0.69 (0.6–0.8)	0.75 (0.7–0.8)	0.30 (0.2–0.3)	0.94 (0.9–0.95)
TMT-A	Aβ- norms	306/427	1.78 (1.1–2.9)	0.70 (0.6–0.8)	0.43 (0.4–0.5)	0.15 (0.1–0.2)	0.91 (0.9–0.94)
	Published norms	582/145	1.38 (0.8–2.3)	0.25 (0.2–0.3)	0.81 (0.8–0.84)	0.16 (0.1–0.2)	0.88 (0.85–0.9)
TMT-B	Aβ- norms	423/237	2.83 (1.8–4.5)	0.58 (0.5–0.7)	0.67 (0.6–0.7)	0.20 (0.1–0.3)	0.92 (0.9–0.95)
	Published norms	539/155	1.84 (1.1–3.0)	0.33 (0.2–0.4)	0.79 (0.76–0.8)	0.19 (0.1–0.2)	0.89 (0.86–0.9)

Numbers are estimates with (95% CI): Aβ, amyloid-beta; AVLT, Auditory Verbal Learning Test; NPV, negative predictive value; OR, odds ratio; PPV, positive predictive value; TMT-A, Trail Making Test part A; TMT-B, Trail Making Test part B.

sample sizes and younger individuals reported no associations between Aβ and cognition (Hedden et al., 2013). We found that tau did not influence cognitive test performance in addition to Aβ, nor in absence of Aβ. Moreover, we found that the influence of Aβ on cognition was not influenced by tau status (i.e., Aβ-tau interaction). These findings are incongruent with previous findings in individuals with MCI as well as in cognitively normal individuals showing that tau and other neurodegenerative features, rather than Aβ, are associated with cognitive impairment and decline in various cognitive domains (Nelson et al., 2012; Mormino et al., 2014; Pettigrew et al., 2015; Brier et al., 2016; Degerman Gunnarsson et al., 2016;

Dumurgier et al., 2017; Cerami et al., 2018). However, there are noteworthy differences between these previously mentioned studies and our study in determining tau status (CSF vs. PET), cognitive outcome measure used (single test, composite score, or computerized test) and design of the study (cross-sectional cognitive performance vs. longitudinal cognitive decline). Taken together, this may imply that the influence of abnormal CSF tau on baseline cognition performance on the tests that we investigated may be detectable only from the prodromal AD stage onwards (i.e., when cognitive impairments are already present). Future studies in different stages of the disease are needed to validate this notion.

Prognostic Utility of A β - Norms

When comparing three groups classified by A β - norms and published norms in their progression rate to dementia, we showed that excluding A β + individuals from normative data for memory tests increased the predictive accuracy for future progression to dementia. This seems to conflict with findings from a previous study (Hassenstab et al., 2016). However, in this previous study they investigated combined A β - and tau-norms, instead of only A β - norms, and validated the norms in a preclinical cohort with progression to CDR \geq 0.5 as an outcome, whereas we validated our norms in a large memory clinic cohort with progression to dementia as an outcome. For non-amnesic cognitive tests (i.e., TMT-A and TMT-B), we found that A β pathology was associated with a worse performance, but the prognostic utility of the A β - norms was comparable to published norms. This implies that although A β pathology influences performance in non-amnesic domains in the preclinical stage, only a severe non-amnesic cognitive impairment (i.e., impairment according to published norms) is predictive of progression to dementia.

Sensitivity vs. Specificity

While we showed that individuals who performed normal by published but abnormal by A β -norms on memory tests (group 2) progressed faster to dementia than individuals who performed normal by A β - norms (group 1) during 12 years of follow-up, application of the A β - norms only slightly improved short-term predictive accuracy (2 years) compared to published norms (AVLT immediate, TMT A & B). This could indicate that two years is too short as a follow-up or that the increase in sensitivity in detecting those at risk of progression to dementia by the A β - norms, is accompanied by a decrease in specificity (i.e., individuals with abnormal scores according to A β - norms who will not progress to dementia). It is however important to note that we only compared different normative data to each other in their predictive accuracy of dementia and did not compare the predictive value of the cognitive tests. Hence, it cannot be deduced from our results which neuropsychological test is the best predictor of AD. Based on the comparisons between the published and A β - norms, we recommend to use the A β -norms in combination with published norms by creating three groups of memory classification instead of two, as illustrated in **Figure 1**, since this will improve prognostic accuracy for individual patients. For example, a 70-year old male with 16 years of education who recalled between 29 and 38 words on the AVLT Immediate would be classified in group 2 (normal by published, abnormal by A β - norms), implying that he is at intermediate risk of progression to dementia. Should he have recalled <29 words he would have been classified in group 3 (abnormal by published norms) with the highest risk of progression, and in case he recalled more than 38 words he would have been classified in group 1 (normal by A β - norms) with the lowest risk of progression.

Age

Age was a consistent predictor of cognitive performance in all cognitive domains even after accounting for present

AD pathology, confirming earlier findings (Oh et al., 2012; Hassenstab et al., 2016). Interestingly, older age augmented the effect of A β on memory and executive functioning, which is in line with previous studies (Lim et al., 2016; Jansen et al., 2017). It is possible that at higher ages amyloid pathology is more extensive and thereby has a larger effect on cognition. Moreover, in older individuals amyloid pathology more often co-exists with other pathologies and together these pathologies may have an additive or synergistic effect on cognition, possibly through processes like inflammation (Franceschi and Campisi, 2014; Vemuri and Knopman, 2016). Inflammation has been associated with many concomitant pathologies, but also with A β itself, and has shown to affect cognition, in particular at higher age (Giunta et al., 2008; Simen et al., 2011).

Strengths and Limitations

Strengths of the current study are the large sample sizes of both the test and validation datasets, assessment of commonly used neuropsychological tests and a long follow-up time in the validation cohort. Nevertheless, the results of the current study must be understood in the context of several limitations. In the test dataset, we included subjects from different centers, which might have led to variability in the data. In addition, it is likely that there was some form of selection bias in the test dataset, making it less comparable to other normative dataset which are usually a reflection of the general population. However, the test data set did not contain individuals with cognitive complaints or individuals from clinical settings. We used only five neuropsychological tests as outcome measure, using additional test might have yielded different results. Our test sample was relatively young, which makes the A β - norms less reliable to assess cognition at higher ages. We used different methods for defining A β pathology (CSF and PET) and we only had data on tau available in a subgroup (e.g., the group with CSF). However, sensitivity analyses showed no influence of the method assessing A β and on the associations between A β + and cognition and these remained similar when testing them in subgroups with CSF (tau) data or PET data available (data not shown). Although the biomarker collection (CSF and PET) was performed according to local routine collection protocols, local cut-off points were used to define A β status which is a frequently used method to pool biomarker data across studies (Jansen et al., 2015; Vos et al., 2015; Bos et al., 2017). Lastly, we only studied tau in CSF as a marker for neurodegeneration. Future studies should determine whether other neurodegenerative markers, like hippocampal atrophy on MRI or tau PET, might provide different results.

CONCLUSION

Using the A β - norms has implications when assessing memory in clinical practice as well as in research settings. A disadvantage of using norms that do not take amyloid status into account (i.e., published norms) is that there is a substantial part of individuals that would be classified as having normal memory, while they may have underlying AD. Consequently it seems best to classify memory performance into three categories by

combining A β - norms with published norms (**Figure 1**), rather than just classifying individuals as normal or abnormal by a single set of norms. The use of three groups for memory performance classification will improve diagnostic and prognostic accuracy for individual patients. Future studies should determine the diagnostic and prognostic values of using A β - norms for other cognitive tests.

ETHICS STATEMENT

Each study was approved by the local ethics committee and all subjects gave written informed consent in accordance with the Declaration of Helsinki.

AUTHOR CONTRIBUTIONS

IB, SV, and PV: study concept and design; All authors: acquisition and/or interpretation of data and critical revision of final draft of manuscript; IB, SV, WJ, and PV: statistical analysis and drafting the manuscript.

FUNDING

The research leading to these results has received support from the Innovative Medicines Initiative Joint Undertaking under EMIF grant agreement n° 115372, resources of which are composed of financial contribution from the European Union's Seventh Framework Programme (FP7/2007-2013) and EFPIA companies' in kind contribution. The EDAR study was funded by the European Commission within the 5th framework program (contract # 37670). The Leuven cohort was funded by the Stichting voor Alzheimer Onderzoek (grant numbers #11020, #13007, and #15005). RV is a senior clinical investigator of the Flemish Research Foundation (FWO). The San Sebastian GAP study is partially funded by the Department of Health of the Basque Government (allocation

17.0.1.08.12.0000.2.454.01.41142.001.H). The Gothenburg MCI study was supported by Sahlgrenska University Hospital, Swedish Medical Research Council. The Alzheimer's Disease Neuroimaging Initiative (ADNI; National Institutes of Health Grant U01 AG024904 and DOD ADNI Department of Defense award number W81XWH-12-2-0012) was funded by the National Institute on Aging, the National Institute of Biomedical Imaging and Bioengineering, and through generous contributions from the following: Alzheimer's Association; Alzheimer's Drug Discovery Foundation; BioClinica, Inc.; Biogen Idec Inc.; Bristol-Myers Squibb Company; Eisai Inc.; Elan Pharmaceuticals, Inc.; Eli Lilly and Company; F. Hoffmann-La Roche Ltd and its affiliated company Genentech, Inc.; GE Healthcare; Innogenetics, N.V.; IXICO Ltd.; Janssen Alzheimer Immunotherapy Research & Development, LLC.; Johnson & Johnson Pharmaceutical Research & Development LLC.; Medpace, Inc.; Merck & Co., Inc.; Meso Scale Diagnostics, LLC.; NeuroRx Research; Novartis Pharmaceuticals Corporation; Pfizer Inc.; Piramal Imaging; Servier; Synarc Inc.; and Takeda Pharmaceutical Company. The Canadian Institutes of Health Research is providing funds to Rev December 5, 2013 support ADNI clinical sites in Canada. Private sector contributions are facilitated by the Foundation for the National Institutes of Health (www.fnih.org). The grantee organization is the Northern California Institute for Research and Education, and the study is coordinated by the Alzheimer's Disease Cooperative Study at the University of California, San Diego. ADNI data are disseminated by the Laboratory for Neuro Imaging at the University of Southern California.

SUPPLEMENTARY MATERIAL

The Supplementary Material for this article can be found online at: <https://www.frontiersin.org/articles/10.3389/fnagi.2018.00193/full#supplementary-material>

REFERENCES

- Adamczuk, K., De Weer, A. S., Nelissen, N., Dupont, P., Sunaert, S., Bettens, K., et al. (2016a). Functional changes in the language network in response to increased amyloid beta deposition in cognitively intact older adults. *Cereb. Cortex* 26, 358–373. doi: 10.1093/cercor/bhu286
- Adamczuk, K., Schaevebeke, J., Nelissen, N., Neyens, V., Vandenbulcke, M., Goffin, K., et al. (2016b). Amyloid imaging in cognitively normal older adults: comparison between (18)F-flutemetamol and (11)C-Pittsburgh compound B. *Eur. J. Nucl. Med. Mol. Imaging* 43, 142–151. doi: 10.1007/s00259-015-3156-9
- Adamczuk, K., Schaevebeke, J., Vanderstichele, H. M., Lilja, J., Nelissen, N., Van Laere, K., et al. (2015). Diagnostic value of cerebrospinal fluid Abeta ratios in preclinical Alzheimer's disease. *Alzheimers Res. Ther.* 7:75. doi: 10.1186/s13195-015-0159-5
- Alcolea, D., Carmona-Iragui, M., Suarez-Calvet, M., Sanchez-Saudinos, M. B., Sala, I., Anton-Aguirre, S., et al. (2014). Relationship between beta-Secretase, inflammation and core cerebrospinal fluid biomarkers for Alzheimer's disease. *J. Alzheimers Dis.* 42, 157–167. doi: 10.3233/JAD-140240
- APA (1994). *Diagnostic and Statistical Manual of Mental Disorders: DSM-IV*. Washington, DC: American Psychiatric Association.
- Baker, J. E., Lim, Y. Y., Pietrzak, R. H., Hassenstab, J., Snyder, P. J., Masters, C. L., et al. (2017). Cognitive impairment and decline in cognitively normal older adults with high amyloid- β : a meta-analysis. *Alzheimers Dement.* 6, 108–121. doi: 10.1016/j.dadm.2016.09.002
- Bateman, R. J., Xiong, C., Benzinger, T. L., Fagan, A. M., Goate, A., Fox, N. C., et al. (2012). Clinical and biomarker changes in dominantly inherited Alzheimer's disease. *N. Engl. J. Med.* 367, 795–804. doi: 10.1056/NEJMoa1202753
- Bos, I., Vos, S. J., Frölich, L., Kornhuber, J., Wiltfang, J., Maier, W., et al. (2017). The frequency and influence of dementia risk factors in prodromal Alzheimer's disease. *Neurobiol. Aging* 56, 33–40. doi: 10.1016/j.neurobiolaging.2017.03.034
- Brier, M. R., Gordon, B., Friedrichsen, K., McCarthy, J., Stern, A., Christensen, J., et al. (2016). Tau and Abeta imaging, CSF measures, and cognition in Alzheimer's disease. *Sci. Transl. Med.* 8:338ra366. doi: 10.1126/scitranslmed.aaf2362
- Cerami, C., Dodich, A., Iannaccone, S., Magnani, G., Santangelo, R., Presotto, L., et al. (2018). A biomarker study in long-lasting amnesic mild cognitive impairment. *Alzheimers Res. Ther.* 10:42. doi: 10.1186/s13195-018-0369-8
- Degerman Gunnarsson, M., Ingelsson, M., Blennow, K., Basun, H., Lannfelt, L., and Kilander, L. (2016). High tau levels in cerebrospinal fluid predict nursing

- home placement and rapid progression in Alzheimer's disease. *Alzheimers Res. Ther.* 8:22. doi: 10.1186/s13195-016-0191-0
- Demuru, M., Gouw, A. A., Hillebrand, A., Stam, C. J., van Dijk, B. W., Scheltens, P., et al. (2017). Functional and effective whole brain connectivity using magnetoencephalography to identify monozygotic twin pairs. *Sci. Rep.* 7:9685. doi: 10.1038/s41598-017-10235-y
- Dubois, B., Hampel, H., Feldman, H. H., Scheltens, P., Aisen, P., Andrieu, S., et al. (2016). Preclinical Alzheimer's disease: definition, natural history, and diagnostic criteria. *Alzheimers Dement.* 12, 292–323. doi: 10.1016/j.jalz.2016.02.002
- Dumurgier, J., Hanseeuw, B. J., Hatling, F. B., Judge, K. A., Schultz, A. P., Chhatwal, J. P., et al. (2017). Alzheimer's disease biomarkers and future decline in cognitive normal older adults. *J. Alzheimers Dis.* 60, 1451–1459. doi: 10.3233/JAD-170511
- Estanga, A., Ecay-Torres, M., Ibanez, A., Izagirre, A., Villanua, J., Garcia-Sebastian, M., et al. (2017). Beneficial effect of bilingualism on Alzheimer's disease CSF biomarkers and cognition. *Neurobiol. Aging* 50, 144–151. doi: 10.1016/j.neurobiolaging.2016.10.013
- Folstein, M. F., Folstein, S. E., and McHugh, P. R. (1975). "Mini-mental state," a practical method for grading the cognitive state of patients for the clinician. *J. Psychiatr. Res.* 12, 189–198.
- Fortea, J., Sala-Llloch, R., Bartres-Faz, D., Bosch, B., Llado, A., Bargallo, N., et al. (2010). Increased cortical thickness and caudate volume precede atrophy in PSEN1 mutation carriers. *J. Alzheimers Dis.* 22, 909–922. doi: 10.3233/jad-2010-100678
- Franceschi, C., and Campisi, J. (2014). Chronic inflammation (inflammaging) and its potential contribution to age-associated diseases. *J. Gerontol. A Biol. Sci. Med. Sci.* 69(Suppl. 1), S4–S9. doi: 10.1093/gerona/glu057
- Giunta, B., Fernandez, F., Nikolic, W. V., Obregon, D., Rapo, E., Town, T., et al. (2008). Inflammaging as a prodrome to Alzheimer's disease. *J. Neuroinflammation* 5:51. doi: 10.1186/1742-2094-5-51
- Hassenstab, J., Chasse, R., Grabow, P., Benzinger, T. L., Fagan, A. M., Xiong, C., et al. (2016). Certified normal: Alzheimer's disease biomarkers and normative estimates of cognitive functioning. *Neurobiol. Aging* 43, 23–33. doi: 10.1016/j.neurobiolaging.2016.03.014
- Hedden, T., Oh, H., Younger, A. P., and Patel, T. A. (2013). Meta-analysis of amyloid-cognition relations in cognitively normal older adults. *Neurology* 80, 1341–1348. doi: 10.1212/WNL.0b013e31828ab35d
- Jack, C. R., Knopman, D. S., Jagust, W. J., Petersen, R. C., Weiner, M. W., Aisen, P. S., et al. (2013). Tracking pathophysiological processes in Alzheimer's disease: an updated hypothetical model of dynamic biomarkers. *Lancet Neurol.* 12, 207–216. doi: 10.1016/s1474-4422(12)70291-0
- Jansen, W. J., Ossenkoppele, R., Knol, D. L., Tijms, B. M., Scheltens, P., Verhey, F. R., et al. (2015). Prevalence of cerebral amyloid pathology in persons without dementia: a meta-analysis. *JAMA* 313, 1924–1938. doi: 10.1001/jama.2015.4668
- Jansen, W. J., Ossenkoppele, R., Tijms, B. M., Fagan, A. M., Hansson, O., Klunk, W. E., et al. (2017). Association of cerebral amyloid-beta aggregation with cognitive functioning in persons without dementia. *JAMA Psychiatry* 75, 84–95. doi: 10.1001/jamapsychiatry.2017.3391
- La Joie, R., Landeau, B., Perrotin, A., Bejanin, A., Egret, S., Pelerin, A., et al. (2014). Intrinsic connectivity identifies the hippocampus as a main crossroad between Alzheimer's and semantic dementia-targeted networks. *Neuron* 81, 1417–1428. doi: 10.1016/j.neuron.2014.01.026
- Lezak, M. D., Howieson, D. B., and Loring, D. W. (2004). *Neuropsychological Assessment*. Oxford, UK: Oxford University Press.
- Lim, Y. Y., Laws, S. M., Villemagne, V. L., Pietrzak, R. H., Porter, T., Ames, D., et al. (2016). Abeta-related memory decline in APOE epsilon4 noncarriers: implications for Alzheimer disease. *Neurology* 86, 1635–1642. doi: 10.1212/WNL.0000000000002604
- McKeith, I. G., Galasko, D., Kosaka, K., Perry, E. K., Dickson, D. W., Hansen, L. A., et al. (1996). Consensus guidelines for the clinical and pathologic diagnosis of dementia with Lewy bodies (DLB): report of the consortium on DLB international workshop. *Neurology* 47, 1113–1124.
- McKhann, G., Drachman, D., Folstein, M., Katzman, R., Price, D., and Stadlan, E. M. (1984). Clinical diagnosis of Alzheimer's disease: report of the NINCDS-ADRDA Work Group under the auspices of department of health and human services task force on Alzheimer's Disease. *Neurology* 34, 939–944.
- Mielke, M. M., Machulda, M. M., Hagen, C. E., Christianson, T. J., Roberts, R. O., Knopman, D. S., et al. (2016). Influence of amyloid and APOE on cognitive performance in a late middle-aged cohort. *Alzheimers Dement.* 12, 281–291. doi: 10.1016/j.jalz.2015.09.010
- Mormino, E. C., Betensky, R. A., Hedden, T., Schultz, A. P., Amariglio, R. E., Rentz, D. M., et al. (2014). Synergistic effect of beta-amyloid and neurodegeneration on cognitive decline in clinically normal individuals. *JAMA Neurol.* 71, 1379–1385. doi: 10.1001/jamaneurol.2014.2031
- Mueller, S. G., Weiner, M. W., Thal, L. J., Petersen, R. C., Jack, C. R., Jagust, W., et al. (2005). Ways toward an early diagnosis in Alzheimer's disease: the Alzheimer's Disease Neuroimaging Initiative (ADNI). *Alzheimers Dement.* 1, 55–66. doi: 10.1016/j.jalz.2005.06.003
- Neary, D., Snowden, J. S., Gustafson, L., Passant, U., Stuss, D., Black, S., et al. (1998). Frontotemporal lobar degeneration: a consensus on clinical diagnostic criteria. *Neurology* 51, 1546–1554.
- Nelson, P. T., Alafuzoff, I., Bigio, E. H., Bouras, C., Braak, H., Cairns, N. J., et al. (2012). Correlation of Alzheimer disease neuropathologic changes with cognitive status: a review of the literature. *J. Neuropathol. Exp. Neurol.* 71, 362–381. doi: 10.1097/NEN.0b013e31825018f7
- Oh, H., Madison, C., Haight, T. J., Markley, C., and Jagust, W. J. (2012). Effects of age and beta-amyloid on cognitive changes in normal elderly people. *Neurobiol. Aging* 33, 2746–2755. doi: 10.1016/j.neurobiolaging.2012.02.008
- Petersen, R. C., Wiste, H. J., Weigand, S. D., Rocca, W. A., Roberts, R. O., Mielke, M. M., et al. (2016). Association of elevated amyloid levels with cognition and biomarkers in cognitively normal people from the community. *JAMA Neurol.* 73, 85–92. doi: 10.1001/jamaneurol.2015.3098
- Pettigrew, C., Soldan, A., Moghekar, A., Wang, M. C., Gross, A. L., O'Brien, R., et al. (2015). Relationship between cerebrospinal fluid biomarkers of Alzheimer's disease and cognition in cognitively normal older adults. *Neuropsychologia* 78, 63–72. doi: 10.1016/j.neuropsychologia.2015.09.024
- Reijs, B. L. R., Ramakers, I., Elias-Sonnenschein, L., Teunissen, C. E., Koel-Simmelink, M., Tsolaki, M., et al. (2017). Relation of odor identification with Alzheimer's disease markers in cerebrospinal fluid and cognition. *J. Alzheimers Dis.* 60, 1025–1034. doi: 10.3233/jad-170564
- Reitan, R. (1979). *Trail-Making Test*. Tucson, AZ: Reitan Neuropsychology Laboratory.
- Rey, A. (1958). *L'examen Clinique en Psychologie [The Psychological Examination]*. Paris: Presses Universitaires de France.
- Roman, G. C., Tatemichi, T. K., Erkinjuntti, T., Cummings, J. L., Masdeu, J. C., Garcia, J. H., et al. (1993). Vascular dementia: diagnostic criteria for research studies. report of the NINDS-AIREN international workshop. *Neurology* 43, 250–260.
- Sala, I., Illan-Gala, I., Alcolea, D., Sanchez-Saudinos, M. B., Salgado, S. A., Morenas-Rodriguez, E., et al. (2017). Diagnostic and prognostic value of the combination of two measures of verbal memory in mild cognitive impairment due to Alzheimer's disease. *J. Alzheimers Dis.* 58, 909–918. doi: 10.3233/jad-170073
- Schmand, B., Houx, P., and de Koning, I. (2003). *Norms for Stroop Color Word Test, Trail Making Test, and Story Recall of Rivermead Behavioural Memory Test*. De sectie Neuropsychologie van het Nederlands Instituut van Psychologen.
- Simen, A. A., Bordner, K. A., Martin, M. P., Moy, L. A., and Barry, L. C. (2011). Cognitive dysfunction with aging and the role of inflammation. *Ther. Adv. Chronic Dis.* 2, 175–195. doi: 10.1177/2040622311399145
- Van der Elst, W., van Boxtel, M. P., van Breukelen, G. J., and Jolles, J. (2005). Rey's verbal learning test: normative data for 1855 healthy participants aged 24–81 years and the influence of age, sex, education, and mode of presentation. *J. Int. Neuropsychol. Soc.* 11, 290–302. doi: 10.1017/s1355617705050344
- Van der Elst, W., Van Boxtel, M. P., Van Breukelen, G. J., and Jolles, J. (2006). Normative data for the animal, profession and letter m naming verbal fluency tests for dutch speaking participants and the effects of age, education, and sex. *J. Int. Neuropsychol. Soc.* 12, 80–89. doi: 10.1017/S1355617706060115
- Vemuri, P., and Knopman, D. S. (2016). The role of cerebrovascular disease when there is concomitant Alzheimer disease. *Biochim. Biophys. Acta* 1862, 952–956. doi: 10.1016/j.bbdis.2015.09.013
- Visser, P. J., Kester, A., Jolles, J., and Verhey, F. (2006). Ten-year risk of dementia in subjects with mild cognitive impairment. *Neurology* 67, 1201–1207. doi: 10.1212/01.wnl.0000238517.59286.c5

- Vos, S. J., Verhey, F., Frolich, L., Kornhuber, J., Wiltfang, J., Maier, W., et al. (2015). Prevalence and prognosis of Alzheimer's disease at the mild cognitive impairment stage. *Brain* 138, 1327–1338. doi: 10.1093/brain/awv029
- Vos, S. J., Xiong, C., Visser, P. J., Jasielec, M. S., Hassenstab, J., Grant, E. A., et al. (2013). Preclinical Alzheimer's disease and its outcome: a longitudinal cohort study. *Lancet Neurol.* 12, 957–965. doi: 10.1016/s1474-4422(13)70194-7
- Wallin, A., Nordlund, A., Jonsson, M., Blennow, K., Zetterberg, H., Ohrfelt, A., et al. (2016). Alzheimer's disease–subcortical vascular disease spectrum in a hospital-based setting: overview of results from the Gothenburg MCI and dementia studies. *J. Cereb. Blood Flow. Metab.* 36, 95–113. doi: 10.1038/jcbfm.2015.148

Conflict of Interest Statement: The authors declare that the research was conducted in the absence of any commercial or financial relationships that could be construed as a potential conflict of interest.

Copyright © 2018 Bos, Vos, Jansen, Vandenberghe, Gabel, Estanga, Ecay-Torres, Tomassen, den Braber, Lleó, Sala, Wallin, Kettunen, Molinuevo, Rami, Chetelat, de la Sayette, Tsolaki, Freund-Levi, Johannsen, the Alzheimer's Disease Neuroimaging Initiative, Novak, Ramakers, Verhey and Visser. This is an open-access article distributed under the terms of the Creative Commons Attribution License (CC BY). The use, distribution or reproduction in other forums is permitted, provided the original author(s) and the copyright owner are credited and that the original publication in this journal is cited, in accordance with accepted academic practice. No use, distribution or reproduction is permitted which does not comply with these terms.