



HAL
open science

Curcumin induces cell death of the main molecular myeloma subtypes, particularly the poor prognosis subgroups

Patricia Gomez-Bougie, Maxime Halliez, Sophie Maïga, Catherine Godon, Charlotte Kervoëlen, Catherine Pellat-Deceunynck, Philippe Moreau, Martine Amiot

► To cite this version:

Patricia Gomez-Bougie, Maxime Halliez, Sophie Maïga, Catherine Godon, Charlotte Kervoëlen, et al.. Curcumin induces cell death of the main molecular myeloma subtypes, particularly the poor prognosis subgroups. *Cancer Biology and Therapy*, 2015, 16 (1), pp.60-5. 10.4161/15384047.2014.986997. inserm-02534388

HAL Id: inserm-02534388

<https://inserm.hal.science/inserm-02534388>

Submitted on 7 Apr 2020

HAL is a multi-disciplinary open access archive for the deposit and dissemination of scientific research documents, whether they are published or not. The documents may come from teaching and research institutions in France or abroad, or from public or private research centers.

L'archive ouverte pluridisciplinaire **HAL**, est destinée au dépôt et à la diffusion de documents scientifiques de niveau recherche, publiés ou non, émanant des établissements d'enseignement et de recherche français ou étrangers, des laboratoires publics ou privés.

This article was downloaded by: [90.59.179.45]

On: 20 February 2015, At: 22:58

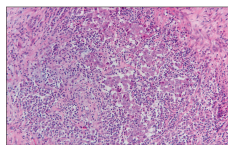
Publisher: Taylor & Francis

Informa Ltd Registered in England and Wales Registered Number: 1072954 Registered office: Mortimer House, 37-41 Mortimer Street, London W1T 3JH, UK

cancer biology & therapy

Editor-in-Chief
Mark S. Dery
mark.dery@tandf.co.uk

Volume 16 - Issue 1 - January 2015



Taylor & Francis



[Click for updates](#)

Cancer Biology & Therapy

Publication details, including instructions for authors and subscription information:

<http://www.tandfonline.com/loi/kcibt20>

Curcumin induces cell death of the main molecular myeloma subtypes, particularly the poor prognosis subgroups

Patricia Gomez-Bougie^{ab}, Maxime Halliez^{ac}, Sophie Maïga^{ab}, Catherine Godon^c, Charlotte Kervoëlen^a, Catherine Pellat-Deceunynck^{ab}, Philippe Moreau^b & Martine Amiot^{ab}

^a INSERM, UMR892 - CNRS; UMR 6299; Université de Nantes; Nantes, France

^b Service d'Hématologie Clinique; Center Hospitalier Universitaire de Nantes; Nantes, France

^c Service d'Hématologie Biologique; Center Hospitalier Universitaire de Nantes; Nantes, France

Accepted author version posted online: 17 Dec 2014.

To cite this article: Patricia Gomez-Bougie, Maxime Halliez, Sophie Maïga, Catherine Godon, Charlotte Kervoëlen, Catherine Pellat-Deceunynck, Philippe Moreau & Martine Amiot (2015) Curcumin induces cell death of the main molecular myeloma subtypes, particularly the poor prognosis subgroups, *Cancer Biology & Therapy*, 16:1, 60-65, DOI: [10.4161/15384047.2014.986997](https://doi.org/10.4161/15384047.2014.986997)

To link to this article: <http://dx.doi.org/10.4161/15384047.2014.986997>

PLEASE SCROLL DOWN FOR ARTICLE

Taylor & Francis makes every effort to ensure the accuracy of all the information (the "Content") contained in the publications on our platform. Taylor & Francis, our agents, and our licensors make no representations or warranties whatsoever as to the accuracy, completeness, or suitability for any purpose of the Content. Versions of published Taylor & Francis and Routledge Open articles and Taylor & Francis and Routledge Open Select articles posted to institutional or subject repositories or any other third-party website are without warranty from Taylor & Francis of any kind, either expressed or implied, including, but not limited to, warranties of merchantability, fitness for a particular purpose, or non-infringement. Any opinions and views expressed in this article are the opinions and views of the authors, and are not the views of or endorsed by Taylor & Francis. The accuracy of the Content should not be relied upon and should be independently verified with primary sources of information. Taylor & Francis shall not be liable for any losses, actions, claims, proceedings, demands, costs, expenses, damages, and other liabilities whatsoever or howsoever caused arising directly or indirectly in connection with, in relation to or arising out of the use of the Content.

This article may be used for research, teaching, and private study purposes. Terms & Conditions of access and use can be found at <http://www.tandfonline.com/page/terms-and-conditions>

It is essential that you check the license status of any given Open and Open Select article to confirm conditions of access and use.

Curcumin induces cell death of the main molecular myeloma subtypes, particularly the poor prognosis subgroups

Patricia Gomez-Bougie^{1,2,*}, Maxime Halliez^{1,3}, Sophie Maïga^{1,2}, Catherine Godon³, Charlotte Kervoëlen¹, Catherine Pellat-Deceunynck^{1,2}, Philippe Moreau², and Martine Amiot^{1,2}

¹INSERM, UMR892 - CNRS; UMR 6299; Université de Nantes; Nantes, France; ²Service d'Hématologie Clinique; Center Hospitalier Universitaire de Nantes; Nantes, France; ³Service d'Hématologie Biologique; Center Hospitalier Universitaire de Nantes; Nantes, France

Keywords: Myeloma, curcumin, Mcl-1, apoptosis, Bcl-2 molecules

Abbreviations: MM, multiple myeloma; HMCLs, human myeloma cell line(s); CCND, Cyclin D.

Multiple myeloma (MM), a plasma cell malignancy, remains incurable despite the development of new therapies. Curcumin anti-tumor effects were previously characterized in multiple myeloma, however only few MM cell lines were included in these studies. Since myeloma is a heterogeneous disease it is important to address the impact of myeloma molecular heterogeneity in curcumin cell death induction. In the present study, a large panel of human myeloma cell lines (HMCLs) (n = 29), representing the main molecular MM subgroups, was screened for curcumin sensitivity. We observed that curcumin cell death induction was heterogeneous, of note 16 HMCLs were highly sensitive to curcumin (LD₅₀ < 20.5 μM), 6 HMCLs exhibited intermediate LD₅₀ values (20.5 μM ≤ LD₅₀ < 32.2 μM) and only 7 HMCLs were weakly sensitive (35 < LD₅₀ < 56 μM). Cell lines harboring the t(11;14) translocation were less sensitive (median LD50 32.9 μM) than non-t(11;14) (median LD50 17.9 μM), which included poor prognosis t(4;14) and t(14;16) cells. Interestingly, curcumin sensitivity was not dependent on TP53 status. For the first time we showed that primary myeloma cells were also sensitive, even those displaying del(17p), another poor prognosis factor. We also unravel the contribution of anti-apoptotic Bcl-2 family molecules in curcumin response. We found that down-regulation of Mcl-1, an essential MM survival factor, was associated with curcumin-induced cell death and its knockdown sensitized myeloma cells to curcumin, highlighting Mcl-1 as an important target for curcumin-induced apoptosis. Altogether, these results support clinical trials including curcumin in association with standard therapy.

Introduction

Curcumin (diferuloylmethane) is a pharmacologically safe polyphenol derived from *Curcuma longa*, its anti-tumor effects have been well described in several types of cancers.^{1,2} Curcumin has been also reported to inhibit multiple myeloma (MM) cell proliferation and to induce MM cell death.³ These effects were associated with the capacity of curcumin to inhibit NF-κB activation, as well as to down-regulate the expression of IL-6, cyclin D1, Bcl-xL and STAT3 phosphorylation.⁴⁻⁶ All of these studies support the fact that curcumin has an anti-myeloma activity. However, only few myeloma cell lines were studied in the former publications; giving the fact that myeloma is a heterogeneous disease,⁷ it is important to address the impact of the molecular heterogeneity of myeloma in curcumin cell death induction. In this context, the molecular

classification of MM patients takes into account the presence of primary IgH translocations and the universal over-expression of CCND (cyclin D) genes. The main translocation subtypes involves the immunoglobulin heavy chain locus on 14q32.33 with recurrent chromosome partners; they include t(11;14), t(4;14) and t(14;16) [(14;16) or (16;22) or (20;22)] with an overexpression of *CCND1*, *MMSET* and *cMAF/MAFB* genes, respectively.⁷ Both, MMSET and MAF myeloma subgroups have been associated with poor prognosis.⁷ Furthermore, del(17p) is universally regarded as a high-risk genetic feature, mainly related to a defect of the TP53 pathway.⁸ In the present work, a large panel of human myeloma cell lines (HMCLs) (n = 29), representing the main molecular MM subgroups, was studied for curcumin sensitivity. For the first time, curcumin effect was also addressed on primary MM cells. We also unravel the contribution of the anti-apoptotic Bcl-2

© Patricia Gomez-Bougie, Maxime Halliez, Sophie Maïga, Catherine Godon, Charlotte Kervoëlen, Catherine Pellat-Deceunynck, Philippe Moreau, and Martine Amiot

*Correspondence to: Patricia Gomez-Bougie; Email: patricia.gomez@inserm.fr

Submitted: 06/12/2014; Revised: 09/09/2014; Accepted: 11/09/2014

<http://dx.doi.org/10.4161/15384047.2014.986997>

This is an Open Access article distributed under the terms of the Creative Commons Attribution-Non-Commercial License (<http://creativecommons.org/licenses/by-nc/3.0/>), which permits unrestricted non-commercial use, distribution, and reproduction in any medium, provided the original work is properly cited. The moral rights of the named author(s) have been asserted.

family molecules, since they are overexpressed in cancer cells and are associated with resistance to chemotherapy.^{9,10}

Results

Analysis of curcumin sensitivity in MM molecular subgroups

Curcumin cell death effect was tested in a large collection of HMCLs (n=29) encompassing the main molecular myeloma subtypes; after 24 h treatment cell death was determined by Apo2.7 staining followed by FACS analysis. We then calculated the LD₅₀ values, defined as the concentration sufficient to kill 50% of cells. We found that cell death induced by curcumin was heterogeneous among the main myeloma subgroups (Fig. 1A and Table 1) with a trend of the t(11,14) HMCLs to be less sensitive (median LD₅₀ 32.9 μM) than the other groups (Fig. 1A), which was confirmed when opposing them to all non t(11;14) HMCLs (median LD₅₀ 17.9 μM) (p = 0.023) (Fig. 1B). Of note, non-t(11;14) HMCLs included t(4;14) and t(14;16), both subgroups known to be of poor prognosis.⁸ Interestingly, taking all HMCLs together (median LD₅₀=20.5 μM), we found that most HMCLs were efficiently killed by curcumin; we observed that 16 HMCLs were highly sensitive (LD₅₀ < 20.5 μM), and 6 HMCLs exhibited intermediate LD₅₀ values (20.5 μM ≤ LD₅₀ < 32.2 μM); only 7 HMCLs exhibited the highest LD₅₀ values (32.2 < LD₅₀ < 56 μM). Moreover, curcumin sensitivity was not dependent on TP53 status, since LD₅₀ were not statistically different between HMCLs exhibiting either wild type (median LD₅₀ 18.4 μM) or abnormal TP53 (mutated, truncated or deleted)¹² (median LD₅₀ 22.15 μM) (p=0.221) (Fig. 1C). All together these results demonstrated that curcumin has an efficient *in vitro* anti-myeloma activity that covers particularly the non t(11;14) subgroups without been affected by TP53 status.

Primary plasma cells were sensitive to Curcumin

We next examined curcumin effect on primary MM cells, to this aim CD138 positive cells obtained from 9 MM or secondary plasma cell leukemia patients were treated with 10 and 20 μM curcumin during 24h, cell death was evaluated by the loss of

CD138 expression.^{12,13} As shown in Figure 2, dot plots illustrated the loss of CD138 staining in primary cells from sample 4 under curcumin treatment. We found that primary cells, from MM or secondary plasma cell leukemia, were efficiently killed by 20 μM curcumin (Table 2). However, 10 μM curcumin allowed distinguishing sensitive (5, 6, 8 and 9), and weakly sensitive (1, 3, 4 and 7) samples (Table 2). Of note, 2 (1 and 4) out of 4 weakly sensitive samples harbored the t(11;14) translocation. Interestingly, primary cells obtained from sample 3 were efficiently killed by 20 μM curcumin (98%) while they were not very sensitive to 20 μM melphalan (13% cell death). It is worth noting that primary cells of 2 (samples 8 and 9) out of 3 patients displaying del(17p) were efficiently killed by 10 μM curcumin.

Early caspase-3 activation and Mcl-1 decrease were associated with cell death induced by curcumin

Although apoptosis induction by curcumin has been studied in different cancer models as well as in myeloma cells,¹⁻⁶ any report included the study of Mcl-1 regulation, the main survival protein for myeloma cells.¹⁴ Thus, to further investigate the molecular mechanism by which curcumin induced cell death, we examined 2 HMCLs, a highly sensitive (L363) and a poorly sensitive one (XG5) (Fig. 3A). We treated both cell lines with 15 μM curcumin for the indicated times, this concentration induced cell death in L363 but not in XG5 cells (Fig. 3A). We demonstrated that curcumin induced apoptosis via the mitochondrial pathway, as evidenced by the activation of caspase-3 as early as 6 hours in the sensitive L363 cells (Fig. 3B). No caspase-3 activation was observed in XG5, according to the absence of cell death. We then studied curcumin effect on the main anti-apoptotic Bcl-2 members expression. The main difference between both cell lines studied was the important early decrease of Mcl-1 in the highly sensitive L363 cells (Fig. 3C, left panel), while it remained unmodified in the absence of cell death in XG5 cells (Fig. 3C, middle panel). Besides, Bcl-xL was down-regulated in both cell lines (Fig. 3C), independently of curcumin cell death induction, suggesting that Bcl-xL is probably not critical for curcumin cell death in MM cells. Finally, Bcl-2 protein level remained unchanged in both cell lines, as well as the pro-apoptotic member Bax. In addition, we performed the same analysis in primary CD138⁺ purified cells (sample 4), similar modifications of the Bcl-2 anti-apoptotic molecules were observed after 24h curcumin treatment, confirming the drastic Mcl-1 decrease in curcumin killed cells (Fig. 3C, right panel). Altogether these results indicated that the early Mcl-1 downregulation is a hallmark of curcumin induced cell death in myeloma cells. Then, to unravel the role of Mcl-1, Bcl-2 and

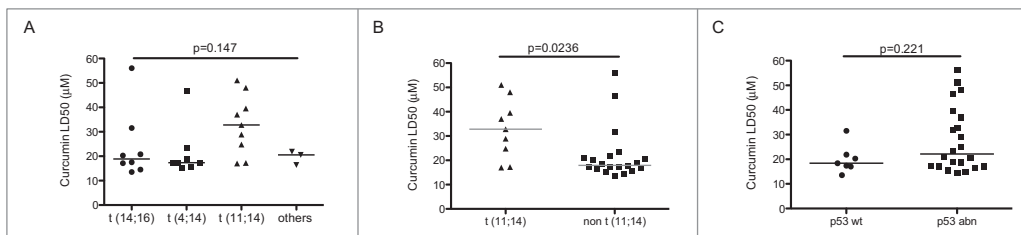


Figure 1. Curcumin induced cell death of myeloma cells belonging to the main molecular myeloma subgroups. (A) HMCL (n = 29) were treated with curcumin for 24 h. Cell death was measured by FACS analysis of Apo2.7 stained cells. LD₅₀ values were calculated from at least 3 independent experiments. HMCLs were classified according to translocation subtypes. Statistical analysis was performed using Kruskal-Wallis test. Curcumin LD₅₀ of HMCLs were analyzed according to (B) the presence or absence of t(11,14) translocation (Table 1) or (C) TP53 status (Table 1). Statistical analysis was performed using Mann-Whitney test.

Table 1. HMCLs' characteristics and sensitivity to curcumin

HMCL	HMCLs characteristics			Curcumin LD ₅₀ (μM)
	Translocation	Target genes	TP53	
BCN	t(14 ;16)	<i>c-Maf</i>	wt	31.5 ± 1.5
XG6	t(16 ;22)	<i>c-Maf</i>	wt	13.5 ± 5
RPMI 8226	t(14 ;16)	<i>c-Maf</i>	mutated	17.2 ± 3
NAN1	t(14 ;16)	<i>c-Maf</i>	negative **	14.5 ± 0.7
L363	t(20 ;22)	<i>MafB</i>	negative**	17.5 ± 2
MM1S	t(14 ;16)	<i>c-Maf</i>	wt	20.3 ± 1.7
JJN3	t(14 ;16)	<i>c-Maf</i>	negative*	20.8 ± 3.2
ANBL6	t(14 ;16)	<i>c-Maf</i>	truncated	56 ± 4
NCIH929	t(4 ;14)	<i>MMSET/FGFR3</i>	wt	18.4 ± 1
XG7	t(4 ;14)	<i>MMSET</i>	wt	17 ± 2
LP1	t(4 ;14)	<i>MMSET/FGFR3</i>	mutated	17.3 ± 2.3
JIM3	t(4 ;14)	<i>MMSET/FGFR3</i>	mutated	46.6 ± 1.8
OPM2	t(4 ;14)	<i>MMSET/FGFR3</i>	mutated	23.5 ± 1.7
NAN3	t(4 ;14)	<i>MMSET</i>	wt + mutated	15 ± 1
NAN8	t(4 ;14)	<i>MMSET/FGFR3</i>	truncated	15.6 ± 2.5
NAN9	t(4 ;14)	<i>MMSET</i>	wt	17.4 ± 1.9
KMS11	t(4 ;14)	<i>MMSET/FRFR3</i>	negative*	19 ± 0.7
NAN7	t(11 ;14)	<i>CCDN1</i>	truncated	17 ± 3
KMS12PE	t(11 ;14)	<i>CCDN1</i>	mutated	39.5 ± 3.6
XG5	t(11 ;14)	<i>CCDN1</i>	mutated	32.8 ± 3.3
KARPAS 620	t(11 ;14)	<i>CCDN1</i>	mutated	28.9 ± 0.11
SKMM2	t(11 ;14)	<i>CCDN1</i>	mutated	37 ± 2.7
XG1	t(11 ;14)	<i>CCDN1</i>	mutated	17.2 ± 1.4
XG11	t(11 ;14)	<i>CCDN1</i>	mutated	27.8 ± 0.8
U266	t(11 ;14)	<i>CCDN1</i>	mutated	51 ± 5
KMS12BM	t(11 ;14)	<i>CCDN1</i>	mutated	48 ± 3
AMO1	t(12 ;14)	unknown	wt	21.9 ± 2.5
XG2	t(12 ;14)	unknown	mutated	16.4 ± 1.8
KMM1	t(6 ;14)	<i>CCDN3</i>	wt + mutated	20.5 ± 2.3

HMCLs characteristics were previously described.^{11,21} LD₅₀ values were determined after 24 h curcumin treatment. Median LD₅₀=20.5 μM

*lack of mRNA expression.

**lack of protein (premature stop codon. lack of intron splicing).

Bcl-xL in curcumin induced cell death we next performed transient knock-down of these anti-apoptotic members. Giving the fact that HMCLs are difficult to transfect, we chose LP1 cells, in which siRNA transfection did not induce cell death.¹⁵ Efficient silencing of targeted molecules was assessed by western blotting analysis (Fig. 3D, left panel). As shown in Figure 3D (right panel), knockdown of Mcl-1 rendered myeloma cells

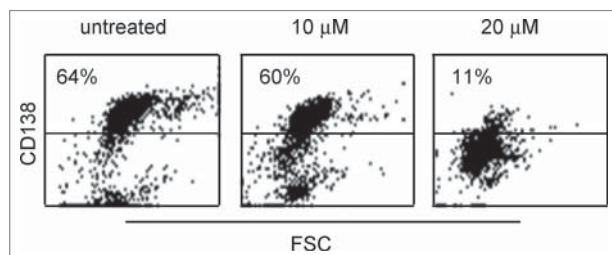


Figure 2. Primary myeloma cells were killed by curcumin. Primary cells (CD 138⁺) obtained from sample 4 were treated 24 h with the indicated doses of curcumin. Cells were then stained with an anti-CD138-PE mAb. The loss of CD138 staining was representative of cell death. Cell death percentage was calculated relative to untreated cells.

Table 2. Sensitivity of primary myeloma cells to curcumin

Sample	Disease	Status	Characteristics			Cell death %	
			t(11;14)	t(4;14)	del(17p)	10 μM	20 μM
1	sPCL	R	+	-	-	21%	98%
2	MM	D	-	+	-	nd	87%
3*	sPCL	R	nd	-	-	23%	98%
4	sPCL	R	+	-	+	7%	83%
5	MM	D	-	-	-	85%	94%
6	MM	D	-	-	-	44%	68%
7	MM	R	-	-	-	0%	35%
8	sPCL	R	-	-	+	64%	96%
9	MM	D	-	-	+	52%	98%

MM, multiple myeloma; sPCL, secondary plasma cell leukemia; R, relapse; D, diagnosis; nd, not done. Cells were treated 24 h with curcumin (10 and 20 μM). Cell death was assessed by the loss of CD138 expression. The presence of t(11;14), t(4;14) and del(17p) was assessed by fluorescence *in situ* hybridization (FISH). *Cells obtained from sample 3 were also treated with melphalan (20 μM), which induced only 13% of cell death.

significantly more sensitive to curcumin, even to lower doses (3.125 μM). On the contrary, knockdown of Bcl-2 had no effect on cell death induced by this agent, in agreement with the absence of Bcl-2 modification under curcumin treatment (Fig. 3C). Besides, Bcl-xL silencing exhibited a minor effect (2.3 cell death fold increase at 3.125 μM) in curcumin death response compared to that of Mcl-1 silencing (6.3 cell death fold increase at 3.125 μM). Thus, these data support an important role of Mcl-1 in curcumin cell death compared to its other anti-apoptotic relatives.

Discussion

The present study demonstrated that curcumin was able to induce cell death of HMCLs belonging to the main MM subtypes. Taking into account myeloma molecular heterogeneity, we found that most sensitive HMCLs were spread out over the t(14;16) and t(4;14) subgroups, which over-express *MAF* and *MMSET* genes, respectively. Strikingly, HMCLs displaying t(11;14) were less sensitive when compared to the non t(11;14) HMCLs (median LD₅₀ 32.9 μM and LD₅₀ 17.9 μM, respectively). This finding could be related to the fact that t(11;14) subgroup is considered as a particular entity regarding its apoptotic machinery. In fact, t(11;14) subgroup that over-express *CCND1* has a low expression of pro-apoptotic Bcl-2 family members, namely: multidomain effectors (Bax/Bak) and BH3-only (Puma, Bik and Bad) proteins.¹⁶ Therefore, it is possible that this feature may influence the less efficient apoptotic response triggered by curcumin. Additionally the higher curcumin sensitivity of t(4;14) and t(14;16) subgroups is a relevant finding, since these translocations are regarded as poor prognosis factors.⁸ Our *in vitro* study also showed that curcumin sensitivity was not affected by *TP53* status, which is not the case for melphalan,¹⁷ a frontline myeloma treatment, efficient to induce long lasting remission, but which does not cure myeloma patients.¹⁸ We also demonstrated for the

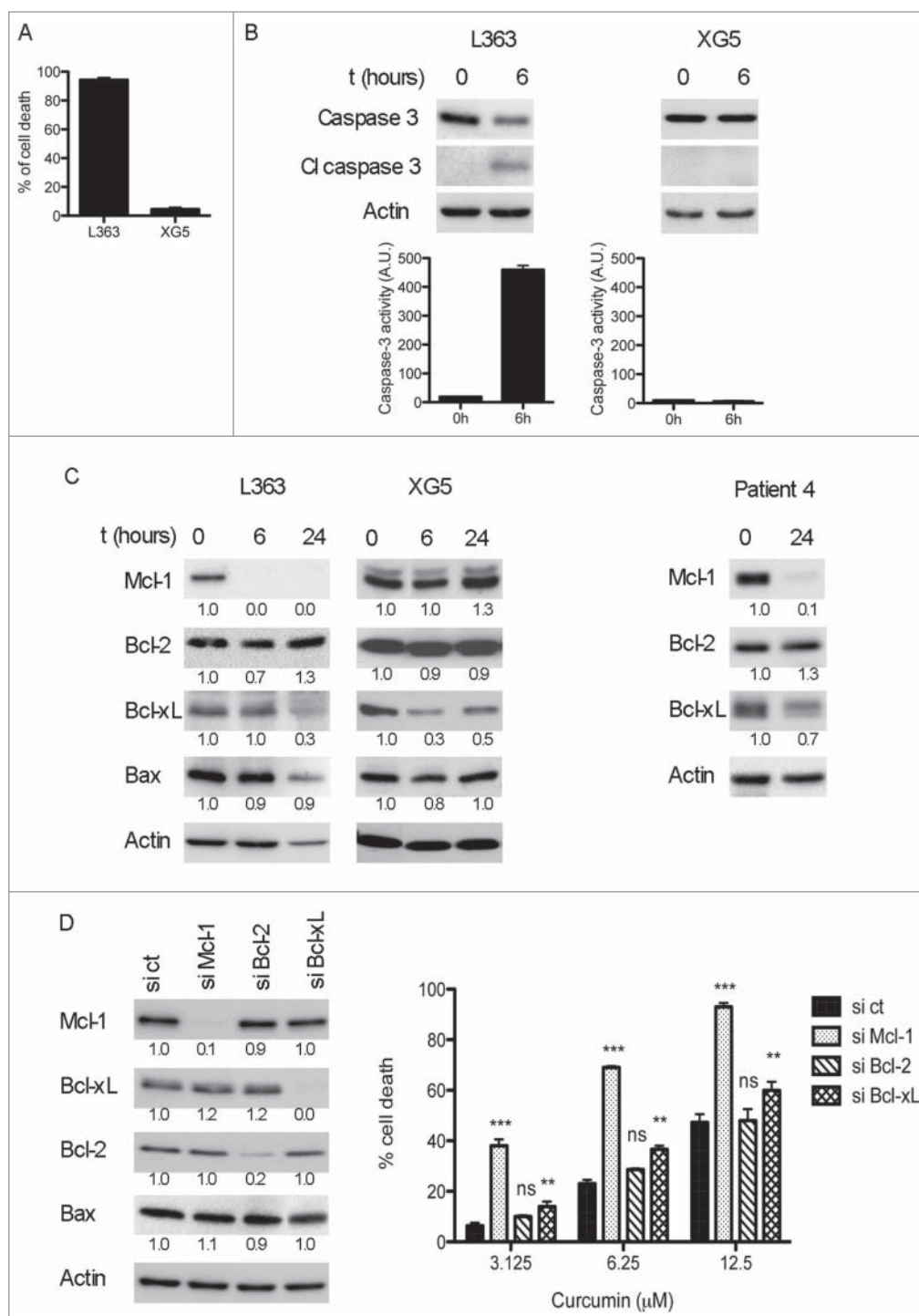


Figure 3. Curcumin cell death was associated with Mcl-1 decrease and Caspase-3 activation. (A) L363 (highly sensitive) and XG5 (poorly sensitive) cells were treated during 24 h with 15 μ M curcumin, cell death was determined by Apo 2.7 staining. Data represent the mean \pm SD of 3 independent experiments. (B) Caspase-3 protein levels and activity were determined on cell lysates. Data represent mean \pm SD of 3 independent experiments. (C) Cells were treated with curcumin for the indicated times and the expression of Bcl-2 family molecules was assessed by protein gel blotting. Primary purified CD138+ cells (p4 sample) were treated 24 h with 15 μ M curcumin, which induced 82% of cell death. (D) Transient knock-down of Mcl-1, Bcl-2 and Bcl-xL was performed on LP1 cells. After 48 h of transfection cells were treated with curcumin for the next 24 h and subjected to Apo 2.7 staining. Efficient silencing of the 3 anti-apoptotic proteins is shown by immunoblotting in the left panel. Data represent mean \pm SD of 3 independent experiments. *** = $P < 0.001$; ** = $P < 0.01$; * = $P < 0.05$ and ns = $P > 0.05$. Statistical analysis was performed using 2-way Anova test.

first time that primary MM cells obtained from patients either at diagnosis or relapse were efficiently killed by curcumin. It is worth noting that primary cells of 2 out of 3 patients displaying del(17p) (samples 4, 8 and 9) were efficiently killed by 10 μ M curcumin. This finding is important because del(17p) is also regarded as a high-risk genetic feature, mainly related to a defect of the TP53 pathway.¹⁹ Moreover, it also reflects the results obtained in HMCLs and is in agreement with the study performed in melanoma cells, in which curcumin induced similar cell death of either wild type or mutated p53 cell lines.²⁰

We showed that curcumin cell death triggered an early caspase-3 activation and pointed out to anti-apoptotic Mcl-1 as an essential target of curcumin. Indeed, an early decrease of Mcl-1 was observed in curcumin sensitive cells, either in cell lines or in primary cells, and Mcl-1 knockdown significantly sensitized myeloma cells to this polyphenol. Sung et al. proposed that Bcl-xL decrease was one of the mechanisms that explained curcumin effect;⁶ however, we observed the decrease of this protein not only during curcumin cell death induction (L363) but also in the absence of cell death (XG5). Thus, we could hypothesize that Bcl-xL decrease had less impact in curcumin cell death than Mcl-1, as supported by our results of transient knockdown experiments. Furthermore, the pharmacological safeness of curcumin has been proved and supported a double-blind study in MGUS and smoldering MM patients; this trial proposed that curcumin might have a potential to slow the disease process in those patients.²¹ Additionally, it has been shown that

curcumin not only potentiated the antitumor effects of bortezomib and thalidomide, but also overcame chemoresistance to conventional myeloma therapy.⁶ Incidentally, we can also report the case of a 42 year-old male who was diagnosed with a symptomatic de novo multiple myeloma in 2002, IgG kappa, M-spike 53 g/L at diagnosis. He was treated with the VAD regimen (vincristin, doxorubicin and dexamethasone) as induction therapy followed by tandem autologous stem cell transplantation prepared by high-dose melphalan. Following high-dose therapy, he was in partial response (M-spike 18 g/L). Progression was documented in July 2006, with an M-component of 30 g/L. He received lenalidomide and dexamethasone from July 2006 until May 2011. This salvage therapy induced a very good partial response, and the M-spike was 2 g/L in May 2011. Lenalidomide and dexamethasone were stopped based on patient's decision. In January 2012, he started oral curcumin, at the dose of 1.5 g/day. He is now receiving daily curcumin for 27 months, and the M-spike is not detectable in the serum electrophoresis, but immunofixation is remaining positive (P. Moreau, unpublished data). All these findings might support clinical trials including curcumin in association with standard therapy, as chemoresistance remains a major challenge in myeloma treatment.

Material and Methods

Human myeloma cell lines and primary myeloma cells

All (HMCLs) were previously characterized.^{12,22} The HMCLs BCN; NAN1, -3, -7, -8 and -9; SBN; and XG1, -2, -5, -6, -7 and -11 were derived in Nantes or Montpellier laboratories in the presence of interleukin-6 (IL-6). KMS11, KMS12-PE and KMM1 HMCLs were kindly provided by Dr. Otsuki (Kurashiki, Japan), JJN3 was kindly provided by Dr. Van Riet (Brussels, Belgium), JIM3 was kindly provided by Dr. MacLennan (Birmingham, UK), Karpas 620 was kindly provided by Dr. Karpas (Cambridge, UK) and MM1S was kindly provided by Dr. Rosen (Chicago, IL). AMO1, LP1, L363, NCI-H929, SKMM2, U266 and OPM2 were purchased from DSMZ (Braunschweig, Germany). All HMCLs were cultured in RPMI1640 supplemented with 5% fetal calf serum (FCS). Cell cultures from BCN, NAN, SBN and XG cells were additionally supplemented with 3 ng/mL IL-6. Blood or bone marrow samples from patients were collected after informed consent at the Department of Hematology, University Hospital of Nantes. Experiments with primary myeloma cells were carried out using unpurified or purified (CD138⁺) myeloma cells, depending on the myeloma infiltration and the total number of cells. Chromosome abnormalities were assessed by fluorescence *in situ* hybridization (FISH).

Reagents and antibodies

Curcumin was purchased from Sigma-Aldrich (C7727) and resuspended in DMSO (50 mM). Anti-APO2.7-phycoerythrin (PE) (IM2088U), anti-CD138-PE (A54190) and control immunoglobulin G1 (IgG1)-PE (555749) monoclonal antibodies (mAbs) were purchased from BD Biosciences.

Cell death measurement

After 24 h of curcumin treatment, cell death of HMCLs was quantified by APO2.7-PE staining followed by flow cytometry analysis, using a FACSCalibur and Cell Quest software (Becton Dickinson). Solvent DMSO did not affect cell viability, since concentrations equivalent to those present in the highest doses of curcumin (dilution 1/600) did not induce cell death. Cell death of primary myeloma cells was determined by the measurement of the loss of CD138 staining, as previously described.^{12,13} Fluorescence was analyzed on FACSCalibur (Cytocell, SFR Bonamy).

Western blotting analysis

Cells were collected and lysed in lysis buffer containing 10 mM Tris, pH 7.6, 150 mM NaCl, 5 mM EDTA and 1% TritonX100, 50 µg/ml pefabloc and 2 µg/ml aprotinin. Cell pellets were disrupted by 10 min sonication and lysates were obtained by centrifugation at 12,000 g for 30 min at 4°C. Equal amount of total proteins were resolved by SDS-PAGE and immunoblotted using antibodies against Mcl-1 (Santa Cruz, sc-819), Bcl-2 (Dako, M0887), Bcl-xL (Transduction Lab, 610209), Caspase-3 (Santa Cruz, sc-7272), Bax (Enzo Life Sciences, ADI-AAM-14-E) and Actin (Millipore, MAB 1501), used as a loading control. Quantification of bands was done using ImageJ software. The basal level of each cell line or patient was considered as 1.

Caspase-3 activity

Caspase-3 activity was detected on cell lysates as previously described.²³ Briefly, caspase-3 activity was measured by following the cleavage of 50 µmol/L Ac-DEVD-AMC peptide in the presence of cell lysates. The fluorescence of the cleaved substrate was determined every 15 min using a spectrophotometer (Fluorolite 1000, Dynatech Laboratories) set at an excitation wavelength of 365 nm and emission wavelength of 465 nm.

siRNA Transfection

LP1 myeloma cells were transfected with 100 pmol siRNA using RNAimaxTM Reagent (Invitrogen, 13778075) according to the manufacturer's instructions; after 48 h cells were treated with curcumin for the following 24 h. siRNAs scramble, Mcl-1 (L-004501), Bcl-2 (L-003307) and Bcl-xL (L-003458) were purchased from Dharmacon.

Statistical analysis

Statistical analysis was performed with Kruskal-Wallis, Mann-Whitney or 2 way Anova test using GraphPad Prism software, where $P < 0.05$ was considered statistically significant.

Disclosure of Potential Conflicts of Interest

No potential conflicts of interest were disclosed.

Funding

This work was supported by Ligue Contre le Cancer Grand Ouest.

References

- Milacic V, Banerjee S, Landis-Piwowar KR, Sarkar FH, Majumdar AP, Dou QP. Curcumin inhibits the proteasome activity in human colon cancer cells *in vitro* and *in vivo*. *Cancer Res* 2008; 18:7283-92; PMID:18794115; <http://dx.doi.org/10.1158/0008-5472.CAN-07-6246>
- Shishodia S, Amin HM, Lai R, Aggarwal BB. Curcumin (diferuloylmethane) inhibits constitutive NF- κ B activation, induces G1/S arrest, suppresses proliferation and induces apoptosis in mantle cell lymphoma. *Biochem Pharmacol* 2005; 5:700-13; PMID:16023083; <http://dx.doi.org/10.1016/j.bcp.2005.04.043>
- Bharti AC, Shishodia S, Reuben J, Weber D, Alexanian R, Raj-Vadhan S, Estrov Z, Talpaz M, Aggarwal BB. Nuclear factor- κ B and STAT3 are constitutively active in CD138⁺ cells derived from multiple myeloma patients, and suppression of these transcription factors leads to apoptosis. *Blood* 2004; 103:3175-84; PMID:15070700; <http://dx.doi.org/10.1182/blood-2003-06-2151>
- Bharti AC, Donato N, Aggarwal BB. Curcumin (diferuloylmethane) inhibits constitutive and IL-6-inducible STAT3 phosphorylation in human myeloma cells. *J Immunol* 2003; 171:3863-71; PMID:14500688; <http://dx.doi.org/10.4049/jimmunol.171.7.3863>
- Park J, Ayyappan V, Bae EK, Lee C, Kim BS, Kim BK, Lee YY, Ahn KS, Yoon SS. Curcumin in combination with bortezomib synergistically induced apoptosis in human multiple myeloma U266 cells. *Mol Oncol* 2008; 2:317-26; PMID:19383353; <http://dx.doi.org/10.1016/j.molonc.2008.09.006>
- Sung B, Kunnumakkara GS, Sethi G, Anand P, Gluha S, Aggarwal BB. Curcumin circumvents chemoresistance *in vitro* and potentiates the effect of thalidomide and bortezomib against human multiple myeloma in nude mice model. *Mol Cancer Ther* 2009; 8:959-70; PMID:19372569; <http://dx.doi.org/10.1158/1535-7163.MCT-08-0905>
- Zhan F, Huang Y, Colla S, Stewart JP, Hanamura I, Gupta S, Epstein J, Yaccoby S, Sawyer J, Burington B, et al. The molecular classification of multiple myeloma. *Blood* 2006; 108:2020-28; PMID:16728703; <http://dx.doi.org/10.1182/blood-2005-11-013458>
- Chesi M, Bergsagel PL. Molecular pathogenesis of multiple myeloma: basic and clinical updates. *Int J Hematol* 2013; 97:313-23; PMID:23456262; <http://dx.doi.org/10.1007/s12185-013-1291-2>
- Johnson SK, Heuck CJ, Albino AP, Qu P, Zhang Q, Shaughnessy JD Jr. The use of molecular-base risk stratification and pharmacogenomics for outcome prediction and personalized therapeutic management of multiple myeloma. *Int J Hematol* 2011; 94:321-33; PMID:22002477; <http://dx.doi.org/10.1007/s12185-011-0948-y>
- Guillème-Toumi S, Robillard N, Gomez P, Moreau P, Le Gouill S, Avet-Loiseau H, Harousseau JL, Amiot M, Bataille R. Mcl1 is overexpressed in multiple myeloma and associated with relapse and shorter survival. *Leukemia* 2005; 9:1248-52; PMID:15902294; <http://dx.doi.org/10.1038/sj.leu.2403784>
- Azmi AS, Wang Z, Philip PA, Mohammad RM, Sarkar FH. Emerging Bcl2 inhibitors for the treatment of cancer. *Expert Opin Emerg Drugs* 2011; 1:59-70; PMID:20812891; <http://dx.doi.org/10.1517/14728214.2010.515210>
- Surget S, Chiron D, Gomez-Bougie P, Descamps G, Ménoret E, Bataille R, Moreau P, Le Gouill S, Amiot M, Pellat-Deceunynck C. Cell Death via DR5, but not DR4, is regulated by p53 in myeloma cells. *Cancer Res* 2012; 72:4562-73; PMID:22738917; <http://dx.doi.org/10.1158/0008-5472.CAN-12-0487>
- Jourdan M, Ferlin M, Legouffe E, Horvathova M, Liautard J, Rossi JF, Wijdenes J, Brochier J, Klein B. The myeloma cell antigen syndecan-1 is lost by apoptotic myeloma cells. *Br J Haematol* 1998; 100:637-46; PMID:9531328; <http://dx.doi.org/10.1046/j.1365-2141.1998.00623.x>
- Derenne S, Monia B, Dean NM, Taylor JK, Rapp MJ, Harousseau JL, Bataille R, Amiot M. Antisense strategy shows that Mcl1 rather than Bcl2 or Bclx(L) is an essential survival protein of human myeloma cells. *Blood* 2002; 100:194-99; PMID:12070027; <http://dx.doi.org/10.1182/blood.V100.1.194>
- Bodet L, Gomez-Bougie P, Touzeau C, Dousset C, Descamps G, Maiga S, Avet-Loiseau H, Bataille R, Moreau P, Le Gouill S, et al. ABT-737 is highly effective against molecular subgroups of multiple myeloma. *Blood* 2011; 118: 3901-10; PMID:21835956; <http://dx.doi.org/10.1182/blood-2010-11-317438>
- Gomez-Bougie P, Amiot M. Apoptotic machinery diversity in multiple myeloma molecular subtypes. *Front Immunol* 2013; 4:1-6; PMID:23355837; <http://dx.doi.org/10.3389/fimmu.2013.00467>
- Surget S, Lemieux-Blanchard E, Maiga S, Descamps G, Le Gouill S, Moreau P, Amiot M, Pellat-Deceunynck C. Bendamustine and melphalan kill myeloma cells similarly through reactive oxygen species production and activation of the p53 pathway and do not overcome resistance to each other. *Leuk Lymphoma* 2014; Epub ahead of print; PMID:24308434
- Moreau P, Avet-Loiseau H, Harousseau JL, Attal M. Current trends in autologous stem-cell transplantation for myeloma in the era of novel therapies. *J Clin Oncol* 2011; 9:1898-06; PMID:21482979; <http://dx.doi.org/10.1200/JCO.2010.32.5878>
- Lodé L, Eveillard M, Trichet V, Soussi T, Guillème S, Richebourg S, Magrangeas F, Ifrah N, Campion L, Traullé C et al. Mutations in TP53 are exclusively associated with del(17p) in multiple myeloma. *Haematologica* 2010; 95:1973-76; PMID:Can't; <http://dx.doi.org/10.3324/haematol.2010.023697>
- Bush JA, Cheung KJ Jr, Li G. Curcumin induces apoptosis in human melanoma cells through a Fas/receptor/caspase-8 pathway independent of p53. *Exp Cell Res* 2001; 2:305-14; PMID:11716543; <http://dx.doi.org/10.1006/excr.2001.5381>
- Golombick T, Diamond TH, Manoharan A, Ramakrishna R. Monoclonal gammopathy of undetermined significance, smoldering multiple myeloma, and curcumin: A randomized, double-blind placebo controlled cross-over 4g study and an open-label 8g extension study. *Am J Hematol* 2012; 5:455-60; PMID:11716543; <http://dx.doi.org/10.1002/ajh.23159>
- Moreaux J, Klein B, Bataille R, Descamps G, Maiga S, Hose D, Goldschmidt H, Jauch A, Rème T, Jourdan M et al. A high-risk signature for patients with multiple myeloma established from the molecular classification of human myeloma cell lines. *Haematologica* 2011; 4:574-82; PMID:21173094; <http://dx.doi.org/10.3324/haematol.2010.033456>
- Gomez-Bougie P, Guillème-Toumi S, Ménoret E, Trichet V, Robillard N, Philippe M, Bataille R, Amiot M. Noxa up-regulation and Mcl1 cleavage are associated to apoptosis induction by bortezomib in multiple myeloma. *Cancer Res* 2007; 67:5418-24; PMID:17545623; <http://dx.doi.org/10.1158/0008-5472.CAN-06-4322>