



**HAL**  
open science

## **Brain tumor with an ATXN1-NUTM1 fusion gene expands the histologic spectrum of NUTM1-rearranged neoplasia**

Aurore Siegfried, Julien Masliah-Planchon, Franck-Emmanuel Roux, Delphine Larrieu-Ciron, Gaëlle Pierron, Yvan Nicaise, Marion Gambart, Isabelle Catalaa, Sarah Pericart, Charlotte Dubucs, et al.

### ► **To cite this version:**

Aurore Siegfried, Julien Masliah-Planchon, Franck-Emmanuel Roux, Delphine Larrieu-Ciron, Gaëlle Pierron, et al. Brain tumor with an ATXN1-NUTM1 fusion gene expands the histologic spectrum of NUTM1-rearranged neoplasia. *Acta Neuropathologica Communications*, 2019, 7 (1), pp.220. 10.1186/s40478-019-0870-8 . inserm-02440672

**HAL Id: inserm-02440672**

**<https://inserm.hal.science/inserm-02440672>**

Submitted on 15 Jan 2020

**HAL** is a multi-disciplinary open access archive for the deposit and dissemination of scientific research documents, whether they are published or not. The documents may come from teaching and research institutions in France or abroad, or from public or private research centers.


L'archive ouverte pluridisciplinaire **HAL**, est destinée au dépôt et à la diffusion de documents scientifiques de niveau recherche, publiés ou non, émanant des établissements d'enseignement et de recherche français ou étrangers, des laboratoires publics ou privés.

LETTER TO THE EDITOR

Open Access



# Brain tumor with an *ATXN1-NUTM1* fusion gene expands the histologic spectrum of *NUTM1*-rearranged neoplasia

Aurore Siegfried<sup>1,2</sup>, Julien Masliah-Planchon<sup>3,4</sup>, Franck-Emmanuel Roux<sup>1</sup>, Delphine Larrieu-Ciron<sup>1</sup>, Gaëlle Pierron<sup>5</sup>, Yvan Nicaise<sup>2</sup>, Marion Gambart<sup>1</sup>, Isabelle Catalaa<sup>1</sup>, Sarah Péricart<sup>1</sup>, Charlotte Dubucs<sup>1</sup>, Badreddine Mohand-Oumoussa<sup>6</sup>, Franck Tirode<sup>7</sup>, Franck Bourdeaut<sup>3,4</sup> and Emmanuelle Uro-Coste<sup>1,2\*</sup> 

**Keywords:** *NUTM1*, *ATXN1*, *NUTM1*-rearranged neoplasia, RNA sequencing, DNA methylation-based classification, Central nervous system, Oncogenic gene fusions, CIC-*ATXN1-ATXN1L* axis

We report a novel *ATXN1-NUTM1* gene fusion in a primitive brain tumor (Fig. 1a). A 21-year-old woman was seen in an emergency department for symptoms of increased intracranial pressure, visual disturbance and right hemiparesis. She reported unusual headaches for the past 3 weeks. MRI showed a frontal tumor with intratumoral hemorrhage (Fig. 1b). The entire tumor was surgically removed. The patient did not receive any additional treatment. 16 months after surgery, the patient was symptom-free and MRI showed no recurrence of the tumor.

Histological features were characterized by a fascicular architectural pattern and chondro-myxoid areas (Fig. 1c, d, e, f). Neuron-like tumor cells were apparent (Fig. 1c). Mitotic activity was overall low but increased in some foci (Fig. 1d). Strong GFAP staining led to an initial diagnosis of an unclassified glioneuronal tumor in spite of olig2 and PS100 negativity (Fig. 1g). Microscopically, the tumor was well circumscribed (Fig. 1h). p53 was accumulated (Fig. 1i). CD56 was strongly expressed. TTF1, chromogranin, synaptophysin, CD34, p63, CK5/6 and smooth muscle actin were negative. ATRX, INI1 and BRG1 expression was maintained. Using the Heidelberg DNA methylation-based CNS tumor classifier, no class prediction was obtained with a greater than  $\geq 0.9$  confidence threshold [1]. The closest entity was the CNS

Ewing Family Tumor *CIC* group with a score of 0.235 (Additional file 1: Table S1) (Case methylation data: <http://www.ncbi.nlm.nih.gov/geo>; GSE138550). This tumor group is associated to the *CIC-NUTM1* gene fusion [6]. We observed strong homogeneous nuclear staining with an anti-NUT antibody, suggesting the presence of a *CIC-NUTM1* fusion (Fig. 1j). RNA sequencing using the Illumina TruSight RNA Fusion panel and Manta for fusion calling revealed a novel *ATXN1-NUTM1* fusion. A *CIC-NUTM1* fusion was not detected. *ETV4* was overexpressed as in *CIC*-fused sarcomas [4, 6]. No pathogenic variants were observed in tumor DNA using a 571-gene targeted sequencing panel (Additional file 2: Table S2).

The fusion gene transcript encompassed almost all of the *ATXN1* coding sequence and the entire exon 6, 7 and 8 regions of *NUTM1*. The most common *NUTM1* breakpoints map between exon 1 and 2, but breakpoints at the distal end of exon 5 have also been described in some *CIC-NUTM1* sarcomas [4].

Initially associated with NUT midline carcinomas, *NUTM1* fusions have now been described in a broad spectrum of tumors ranging from carcinoma to sarcoma and leukemia [2, 3, 7]. The most common fusion partner gene in carcinoma and sarcoma is *BRD4* followed by *BRD3* and *NSD3*. Various new partners have been recently described [2, 3, 5]. The prognosis of these tumors is generally poor, although NUT-associated leukemias appear to be associated with a better prognosis and *YAP1-NUTM1* is associated with benign skin adnexal gland tumors [3, 5].

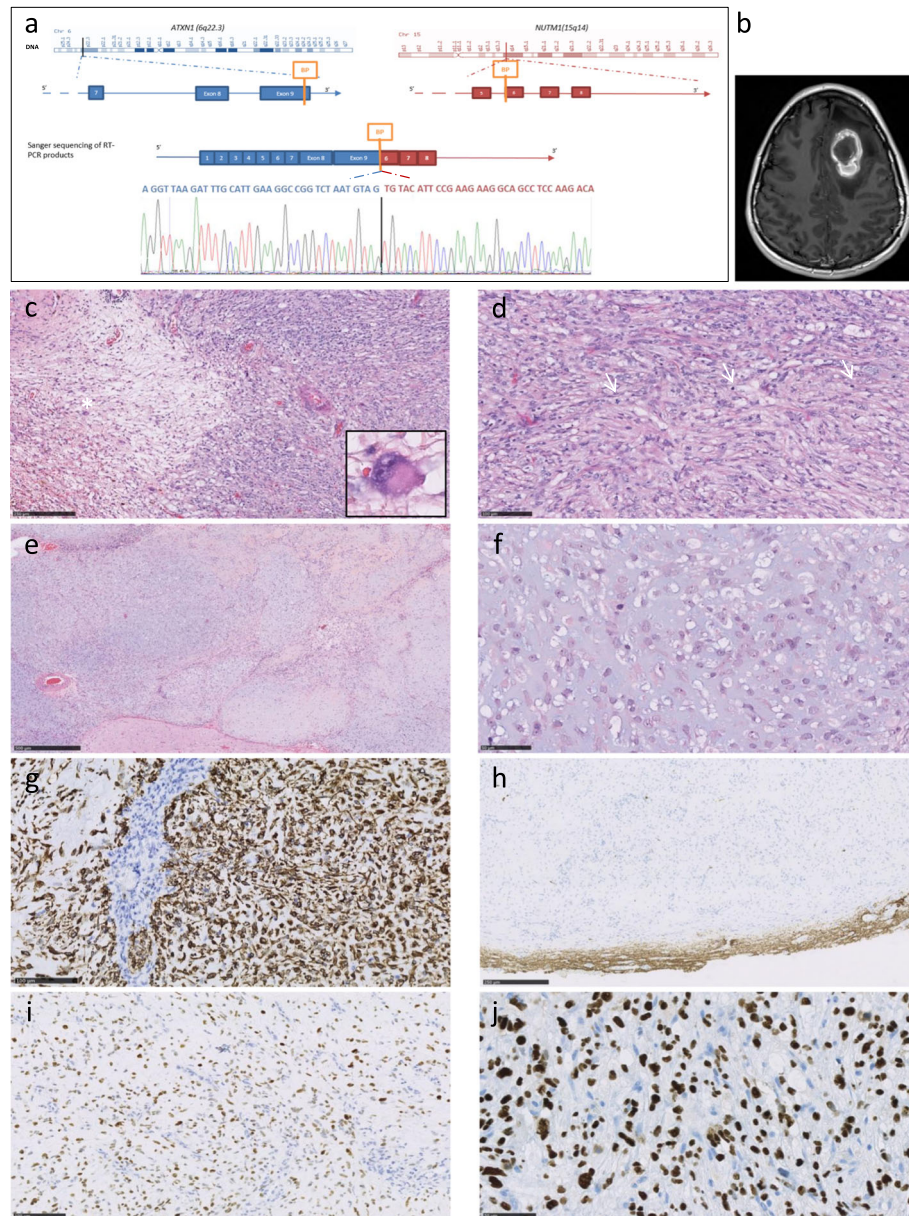
\* Correspondence: [uro-coste.e@chu-toulouse.fr](mailto:uro-coste.e@chu-toulouse.fr)

<sup>1</sup>Departments of Pathology, Neurology, Neurosurgery, Radiology and Pediatric Oncology, Toulouse University Hospital, Toulouse, France

<sup>2</sup>INSERM U1037, Cancer Research Center of Toulouse (CRCT), Toulouse, France

Full list of author information is available at the end of the article





**Fig. 1** *ATXN1-NUTM1* gene fusion, confirmed by RT-PCR and Sanger sequencing (a). MRI identified a frontal mass. Enhancement after contrast injection (T1) (b). Representative histopathology. On the left, loose area with neuron-like tumor cells (\*detail) (c). Fascicular architecture with three mitoses (arrows) (d). Chondroid-like, myxoid and hyalinized areas were observed (e). Undifferentiated cells with large nucleoli in a chondromyxoid background (f). Strong GFAP staining was observed. Tumor showed vascular proliferation (g). Neurofilament staining circumscribed the tumor mass with no significant staining within the tumor (h). p53 accumulated in tumor nuclei (i). Anti-NUT antibody staining showing homogeneous intranuclear expression (j)

*CIC* rearranged sarcomas are often fused to *DUX4* and less frequently to *NUTM1* [4, 7]. All *CIC* re-arranged tumors irrespective of their location or their fusion partner gene share the same transcriptomic profile defining a molecular subgroup distinct from NUT carcinoma [4, 7]. Interestingly, *ATXN1* codes for ataxin1 which forms a transcriptional repressor complex with *CIC*. They are both part of the *CIC-ATXN1-ATXN1L* mitotic cell cycle

regulator axis [8]. Excluding *CIC-NUTM1* fused tumors, only one *NUTM1* rearranged brain tumor has been previously reported, namely a cytokeratin negative *BRD4-NUTM1* PNET-like parietal lobe tumor in a 3-year old boy with GFAP and synaptophysin positivity. On methylation profiling, this neoplasm did not cluster with tumors of the CNS Ewing Family Tumor *CIC* group [2].

Myxoid and chondroid differentiation has been reported in *NUTM1*-rearranged sarcomas but is unusual in primary glioneuronal tumors. Whether the strong GFAP positivity of our specific case is indicative of a glial tumor or of a sarcoma with myoepithelial differentiation cannot be assessed due to the lack of positive staining and specificity for other markers tested. GFAP positivity has been described in 3 out of 4 *NUTM1* rearranged soft tissue or visceral sarcomas, this is in contrast to the CNS Ewing Family Tumor *CIC* group which fails to express any differentiation markers [2, 6]. We recommend performing NUT immunohistochemistry followed by RNA sequencing to identify any potential *NUTM1* fusion partner genes in GFAP+/olig2- unclassified glioma, particularly those with myxoid and/or chondroid features. The *ATXN1-NUTM1* fusion gene may define a novel group of rare primary brain tumors. The prognostic influence of *NUTM1* fusion partners and the brain localization of *NUTM1*-rearranged tumors warrant further investigation.

### Supplementary information

Supplementary information accompanies this paper at <https://doi.org/10.1186/s40478-019-0870-8>.

**Additional file 1: Table S1.** Results of the Heidelberg DNA methylation-based CNS tumor classifier (entities and scores).

**Additional file 2: Table S2.** List of the 517 childhood cancer genes in the dragon targeted gene sequencing panel (Illumina\_Truseq Custom Amplicon).

### Acknowledgments

Samples were obtained from the CHU de Toulouse tumor bank BB-0033-00014. We thank the "Société Française des Cancers de l'Enfant" for their support.

### Authors' contributions

AS, FT, FB, EUC were major contributors in writing the manuscript. JMP, GP, YN, BMO carried out the molecular genetic studies. AS, SP, EUC characterized the histological features. YN, CD carried out the sequence alignment. FER, DLC, MG, IC contributed to the data collection. All authors read and approved the final manuscript.

### Competing interests

The authors declare that they have no competing interests.

### Author details

<sup>1</sup>Departments of Pathology, Neurology, Neurosurgery, Radiology and Pediatric Oncology, Toulouse University Hospital, Toulouse, France. <sup>2</sup>INSERM U1037, Cancer Research Center of Toulouse (CRCT), Toulouse, France. <sup>3</sup>Departments of Genetics and of Oncopediatry and Young Adults, Curie Institute, Paris, France. <sup>4</sup>INSERM U830, Laboratory of Translational Research in Pediatric Oncology, SIREDO pediatric oncology center, Curie Institute, Paris, France. <sup>5</sup>Department of Somatic Genetics, Curie Institute, Paris, France. <sup>6</sup>Plateforme Post-génomique P3S, Faculté de Médecine Pierre et Marie Curie, Paris, France. <sup>7</sup>INSERM 1052, CNRS 5286, Cancer Research Center of Lyon, Centre Léon Bérard, Claude Bernard Lyon 1 University, Lyon, France.

Received: 11 December 2019 Accepted: 11 December 2019

Published online: 30 December 2019

### References

- Capper D, Jones DTW, Sill M et al (2018) DNA methylation-based classification of central nervous system tumours. *Nature* 555:469–474
- Dickson BC, Sung YS, Rosenblum MK, Reuter VE, Harb M, Wunder JS, Swanson D, Antonescu CR (2018) *NUTM1* gene fusions characterize a subset of undifferentiated soft tissue and visceral tumors. *Am J Surg Pathol* 42:636–645
- Hormann FM, Hoogkamer AQ, Beverloo HB et al. (2019) *NUTM1* is a recurrent fusion gene partner in B cell precursor acute lymphoblastic leukemia associated with increased expression of genes on chromosome band 10p12.31–12.2. *Haematologica*. [ahead of print] PubMed PMID: 30872366
- Le Loarer F, Pissaloux D, Watson S et al (2019) Clinicopathologic features of *CIC-NUTM1* sarcomas, a new molecular variant of the family of *CIC*-fused sarcomas. *Am J Surg Pathol* 43:268–276
- Sekine S, Kiyono T, Ryo E et al (2019) Recurrent *YAP1-MAML2* and *YAP1-NUTM1* fusions in poroma and porocarcinoma. *J Clin Invest* 130:3827–3832
- Sturm D, Orr BA, Toprak UH et al (2016) New brain tumor entities emerge from molecular classification of CNS-PNETs. *Cell*. 164:1060–1072
- Watson S, Perrin V, Guillemot D et al (2018) Transcriptomic definition of molecular subgroups of small round cell sarcomas. *J Pathol* 245:29–40
- Wong D, Lounsbury K, Lum A et al (2019) Transcriptomic analysis of *CIC* and *ATXN1L* reveal a functional relationship exploited by cancer. *Oncogene* 38: 273–290

### Publisher's Note

Springer Nature remains neutral with regard to jurisdictional claims in published maps and institutional affiliations.

Ready to submit your research? Choose BMC and benefit from:

- fast, convenient online submission
- thorough peer review by experienced researchers in your field
- rapid publication on acceptance
- support for research data, including large and complex data types
- gold Open Access which fosters wider collaboration and increased citations
- maximum visibility for your research: over 100M website views per year

At BMC, research is always in progress.

Learn more [biomedcentral.com/submissions](https://biomedcentral.com/submissions)

