



**HAL**  
open science

## Essential role of GEXP15, a specific Protein Phosphatase type 1 partner, in Plasmodium berghei in asexual erythrocytic proliferation and transmission

Thomas Hollin, Caroline de Witte, Aline Fréville, Ida Chiara Guerrero, Cerina Chhuon, Jean-Michel Saliou, Fabien Herbert, Christine Pierrot, Jamal Khalife

### ► To cite this version:

Thomas Hollin, Caroline de Witte, Aline Fréville, Ida Chiara Guerrero, Cerina Chhuon, et al.. Essential role of GEXP15, a specific Protein Phosphatase type 1 partner, in Plasmodium berghei in asexual erythrocytic proliferation and transmission. PLoS Pathogens, 2019, 15 (7), pp.e1007973. 10.1371/journal.ppat.1007973 . inserm-02274747

**HAL Id: inserm-02274747**

**<https://inserm.hal.science/inserm-02274747>**

Submitted on 30 Aug 2019

**HAL** is a multi-disciplinary open access archive for the deposit and dissemination of scientific research documents, whether they are published or not. The documents may come from teaching and research institutions in France or abroad, or from public or private research centers.

L'archive ouverte pluridisciplinaire **HAL**, est destinée au dépôt et à la diffusion de documents scientifiques de niveau recherche, publiés ou non, émanant des établissements d'enseignement et de recherche français ou étrangers, des laboratoires publics ou privés.



Distributed under a Creative Commons Attribution 4.0 International License

RESEARCH ARTICLE

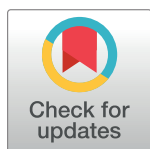
# Essential role of GEXP15, a specific Protein Phosphatase type 1 partner, in *Plasmodium berghei* in asexual erythrocytic proliferation and transmission

Thomas Hollin<sup>1</sup> , Caroline De Witte<sup>1</sup> , Aline Fréville<sup>1</sup> , Ida Chiara Guerrero<sup>2</sup>, Cerina Chhuon<sup>2</sup>, Jean-Michel Saliou<sup>1</sup> , Fabien Herbert<sup>1</sup> , Christine Pierrot<sup>1</sup>, Jamal Khalife<sup>1</sup>\* 

**1** Univ. Lille, CNRS, Inserm, CHU Lille, Institut Pasteur de Lille, U1019 - UMR8204 – CIIL - Center for Infection and Immunity of Lille, Lille, France, **2** Proteomics platform 3P5-Necker, Université Paris Descartes - Structure Fédérative de Recherche Necker, INSERM US24/CNRS UMS3633, Paris, France

 These authors contributed equally to this work.

\* [jamal.khalife@pasteur-lille.fr](mailto:jamal.khalife@pasteur-lille.fr)



 OPEN ACCESS

**Citation:** Hollin T, De Witte C, Fréville A, Guerrero IC, Chhuon C, Saliou J-M, et al. (2019) Essential role of GEXP15, a specific Protein Phosphatase type 1 partner, in *Plasmodium berghei* in asexual erythrocytic proliferation and transmission. PLoS Pathog 15(7): e1007973. <https://doi.org/10.1371/journal.ppat.1007973>

**Editor:** Michael J Blackman, Francis Crick Institute, UNITED KINGDOM

**Received:** May 20, 2019

**Accepted:** July 10, 2019

**Published:** July 26, 2019

**Copyright:** © 2019 Hollin et al. This is an open access article distributed under the terms of the [Creative Commons Attribution License](https://creativecommons.org/licenses/by/4.0/), which permits unrestricted use, distribution, and reproduction in any medium, provided the original author and source are credited.

**Data Availability Statement:** Data are available via ProteomeXchange with identifiers PXD013814 and PXD013874.

**Funding:** This work is funded by the University of Lille, CNRS and Institut Pasteur de Lille. The funders had no role in study design, data collection and analysis, decision to publish, or preparation of the manuscript.

**Competing interests:** The authors have declared that no competing interests exist.

## Abstract

The essential and distinct functions of Protein Phosphatase type 1 (PP1) catalytic subunit in eukaryotes are exclusively achieved through its interaction with a myriad of regulatory partners. In this work, we report the molecular and functional characterization of Gametocyte EXported Protein 15 (GEXP15), a *Plasmodium* specific protein, as a regulator of PP1. *In vitro* interaction studies demonstrated that GEXP15 physically interacts with PP1 through the RVxF binding motif in *P. berghei*. Functional assays showed that GEXP15 was able to increase PP1 activity and the mutation of the RVxF motif completely abolished this regulation. Immunoprecipitation assays of tagged GEXP15 or PP1 in *P. berghei* followed by immunoblot or mass spectrometry analyses confirmed their interaction and showed that they are present both in schizont and gametocyte stages in shared protein complexes involved in the spliceosome and proteasome pathways and known to play essential role in parasite development. Phenotypic analysis of viable GEXP15 deficient *P. berghei* blood parasites showed that they were unable to develop lethal infection in BALB/c mice or to establish experimental cerebral malaria in C57BL/6 mice. Further, although deficient parasites produced gametocytes they did not produce any oocysts/sporozoites indicating a high fitness cost in the mosquito. Global proteomic and phosphoproteomic analyses of GEXP15 deficient schizonts revealed a profound defect with a significant decrease in the abundance and an impact on phosphorylation status of proteins involved in regulation of gene expression or invasion. Moreover, depletion of GEXP15 seemed to impact mainly the abundance of some specific proteins of female gametocytes. Our study provides the first insight into the contribution of a PP1 regulator to *Plasmodium* virulence and suggests that GEXP15 affects both the asexual and sexual life cycle.

## Author summary

In the absence of an effective vaccine and the emerging resistance to artemisinin combination therapy, malaria is still a significant threat to human health. Increasing our understanding of the specific mechanisms of the biology of *Plasmodium* is essential to propose new strategies to control this infection. Here, we demonstrated that GEXP15, a specific protein in *Plasmodium*, was able to interact with the Protein Phosphatase 1 and regulate its activity. We showed that both proteins are implicated in common protein complexes involved in the mRNA splicing and proteasome pathways. We reported that the deletion of GEXP15 leads to a loss of parasite virulence during asexual stages and a total abolishment of the capacity of deficient parasites to develop in the mosquito. We also found that this deletion affects both protein phosphorylation status and significantly decreases the expression of essential proteins in schizont and gametocyte stages. This study characterizes for the first time a novel molecular pathway through the control of PP1 by an essential and specific *Plasmodium* regulator, which may contribute to the discovery of new therapeutic targets to control malaria.

## Introduction

Convergent findings from several studies indicate that protein dephosphorylation by phosphatases governs key fundamental processes in the biology of eukaryotic cells including *Plasmodium falciparum* [1]. Among these phosphatases, the Protein Phosphatase type 1 catalytic subunit (PP1c) seems to play a pivotal role in the development and growth of *Plasmodium* blood stage parasites [2,3]. In addition, it has been reported in eukaryotes that several conserved PP1c interacting proteins (PIPs) endowed with phosphatase regulatory functions are as essential as PP1c itself [4–7]. In mammalian cells, hundreds of PIPs have been identified and classified as regulators and substrates, capable of targeting PP1c to particular cellular organelles [8,9]. The combination of PP1c with an extensive range of PIPs contributes to the constitution of specific PP1 network, playing an effective role as a hub in diverse cellular functions.

Our earlier studies on *P. falciparum* revealed the expression of four conserved putative regulators (PfLRR1, Pf Inhibitor 2, Pf Inhibitor 3 and Pfeif2 $\beta$ ) which have been extensively explored to define their functions [10–15]. In this context, biochemical and structure-activity relationship studies demonstrated that these regulators bind to recombinant PfPP1 and three of them regulate its activity *in vitro*. Several binding sites have also been defined by structure-interaction studies using mutated recombinant proteins and derived peptides, showing the involvement of LRR/LRR cap motifs for PfLRR1 and the consensus RVxF motif for Pfeif2, Pfeif3 and Pfeif2 $\beta$ . In addition, knock-out approaches suggested their essentiality in the life cycle of blood stage parasites. Finally, these interactions seem to be indispensable since disrupting the interaction between PP1c and Pfeif2, Pfeif3 or PfLRR1 by the use of interfering peptides that inhibit complex formation led to parasite growth inhibition *in vitro* [12–14]. This proof of concept offers a robust basis to consider PP1c interactions as valuable therapeutic targets.

Based on the above data and on the atypical life cycle of *Plasmodium* with ~60% of unknown genes in its genome [16], including specific proteins submitted to reversible phosphorylation, our working hypothesis was that *Plasmodium* must express specific partners, regulators and/or transporters which direct PP1 activity. In order to identify PfPP1 interactors, extensive screens for PfPP1 binding proteins were carried out, using the yeast two-hybrid (Y2H) system combined with direct interactions studies using recombinant proteins [17]. A total of 31 proteins in the correct translational reading frame with the Gal4 activating domain

were identified. Upon close inspection of the amino acid sequences of binding regions of these proteins, six clones were identified exhibiting a potential RVxF binding motif with a more restrictive and specific consensus sequence of PP1 interactors [17,18]. Indeed, we have used the PfPP1 interactome to reevaluate the features of flanking residues of the RVxF motif. We observed enrichment for basic amino acids (R and K) at the N-terminal side of this binding motif.

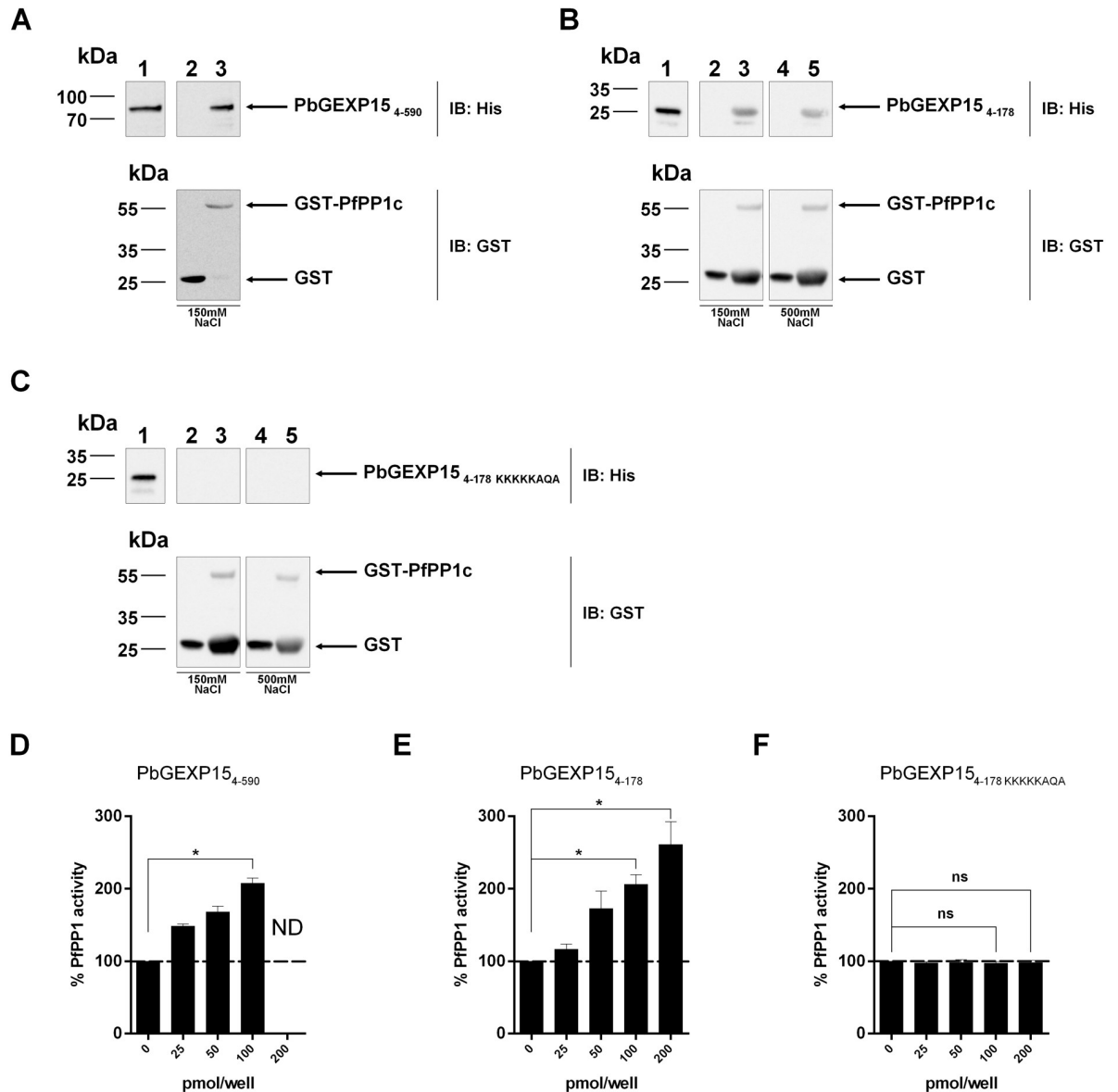
We prioritized candidate genes that were *Plasmodium*-specific with a robust interaction with PfPP1. One of these genes, formerly described as *P. falciparum* Gametocyte Exported Protein 15 (PfGEXP15) (PF3D7\_1031600), was repeatedly detectable under stringent conditions of binding to PfPP1 throughout the Y2H screens. In addition, the presence of a potential restrictive binding motif was identified in the interacting region of PfGEXP15 [17]. PfGEXP15 has been classified in the GEXP cluster, grouping different proteins predicted to be exported and detected only in the proteome of early gametocytes or being overexpressed at this stage [19]. However, interestingly, PfGEXP15 was also detected in the proteomes of asexual stages and sporozoites suggesting its involvement at different steps of the parasite life cycle [20].

In this work, we confirm that GEXP15 interacts with PP1 and showed its capacity to regulate the dephosphorylation activity of PP1 via a major contribution of RVxF binding motif in *P. berghei*. Interatomic analysis revealed that the GEXP15-PP1 are part of two protein complexes involved in mRNA splicing and proteasome pathways, known to play key roles in parasite development. Further, for the first time, we demonstrate that the complete disruption of GEXP15 generates attenuated parasites both for asexual and sexual growth in mice and mosquitoes respectively, suggesting specific and essential functions. Finally, we provide evidence that proteome and phosphoproteome of deficient schizont and gametocyte parasite stages are impacted at different levels arguing for an involvement of GEXP15 in these processes.

## Results

### Interaction of *Plasmodium* GEXP15 with PP1 and binding motifs

In order to extend and to further characterize the GEXP15 that we previously reported as a partner of PP1 in *P. falciparum* [17], its ortholog in *P. berghei* (PBANKA\_0515400) was investigated. The predicted PbGEXP15 protein (656 aa) shares an overall identity of 41% with PfGEXP15 and both contain two putative consensus RVxF binding motifs to PP1 (S1 Fig). The construct of PbGEXP15<sub>4–590</sub>, spanning almost the full-length sequence was tested in the Y2H system in which PfPP1c was used as bait as it exhibits 99% identity with PbPP1. We observed that only the diploids expressing PbGEXP15 and PfPP1c were able to grow on selective and stringent media indicating their ability to specifically interact with each other (S2A Fig). Control constructs (empty vector, vector expressing unrelated gene) did not show any growth. To better define the interacting regions, constructs with PbGEXP15<sub>4–178</sub> containing the first RVxF binding motif to PP1 or PbGEXP15<sub>446–596</sub> comprising the second one were used. PbGEXP15<sub>4–178</sub> revealed the same specific interaction with PfPP1c, confirming the data described above (S2B Fig). In the case of PbGEXP15<sub>446–596</sub> with the second RVxF motif no yeast growth was observed, suggesting that it is a random sequence and a non-canonical binding site (S2B Fig). To validate the involvement of the first RVxF binding motif present in PbGEXP15, site directed mutagenesis was carried out to obtain V34A and F36A (PbGEXP15<sub>4–178</sub> KKKKKAQA). Interaction with PfPP1c was not observed with this mutant, confirming that the native sequence represents a genuine RVxF binding motif (S2B Fig). The main contribution of this RVxF motif was reinforced by the lack of growth on high stringency selection in the presence of PfPP1c mutated at its docking site by replacing F255 and F256 by two alanine residues (S2C Fig) [18,21–23].



**Fig 1. Direct interaction of PbGEXP15 with PP1c and its effect on the phosphatase activity *in vitro*.** A, B and C represent GST-pull down experiments. A, Immunoblot (IB) represents the input positive control (500ng) in lane 1 and the GST-pull down of 6-His PbGEXP15<sub>4-590</sub> with GST alone or PfPP1c-GST in lanes 2 and 3 respectively and revealed with mAb anti-His (upper panel) and anti-GST (lower panel). B, Immunoblot (IB) represents the input positive control (500ng) in lane 1 and the GST-pull down of 6-His PbGEXP15<sub>4-178</sub> with GST alone or PfPP1c-GST in lanes 2 and 3 respectively in the presence of 150 mM NaCl and revealed with mAb anti-His (upper panel) and anti-GST (lower panel). Lanes 4 and 5 represent the GST-pull down as in lanes 2 and 3 in the presence of 500 mM NaCl. C, 6-His PbGEXP15<sub>4-178 KKKKKAQA</sub> was incubated in the same conditions as in B. Figures D, E and F show the impact on phosphatase activity. PfPP1c was pre-incubated for 30 min at 37°C with different concentrations of PbGEXP15<sub>4-590</sub> (D), PbGEXP15<sub>4-178</sub> (E) and PbGEXP15<sub>4-178 KKKKKAQA</sub> (F) before the addition of pNPP. The optical density was measured after 1h at 37°C. Results indicate the mean ± SD of the % of relative increase from two independent experiments performed in duplicate. Mann-Whitney *U* test was performed for 100 and 200 pmol/well of recombinant proteins compared to control, \* *p*<0.05. ND: Not determined. ns: no significant.

<https://doi.org/10.1371/journal.ppat.1007973.g001>

To further support the PbGEXP15-PP1 interaction, GST-PfPP1c pull-down experiments with wild-type and mutated His-PbGEXP15 recombinant proteins were carried out. Western blot analyses showed that PbGEXP15<sub>4-590</sub> (Fig 1A), and PbGEXP15<sub>4-178</sub> (Fig 1B) bound to GST-PfPP1c but not to GST alone, while the mutated PbGEXP15<sub>4-178 KKKKKAQA</sub> revealed no

binding to GST-PfPP1c (Fig 1C). In addition, the interaction of PbGEXP15<sub>4–178</sub> with PfPP1c was tested under stringent conditions (500 mM NaCl) and remained detectable. These data showed that GEXP15 physically and strongly binds to PP1c via the RVxF motif.

### Effect of GEXP15 on the activity of PP1

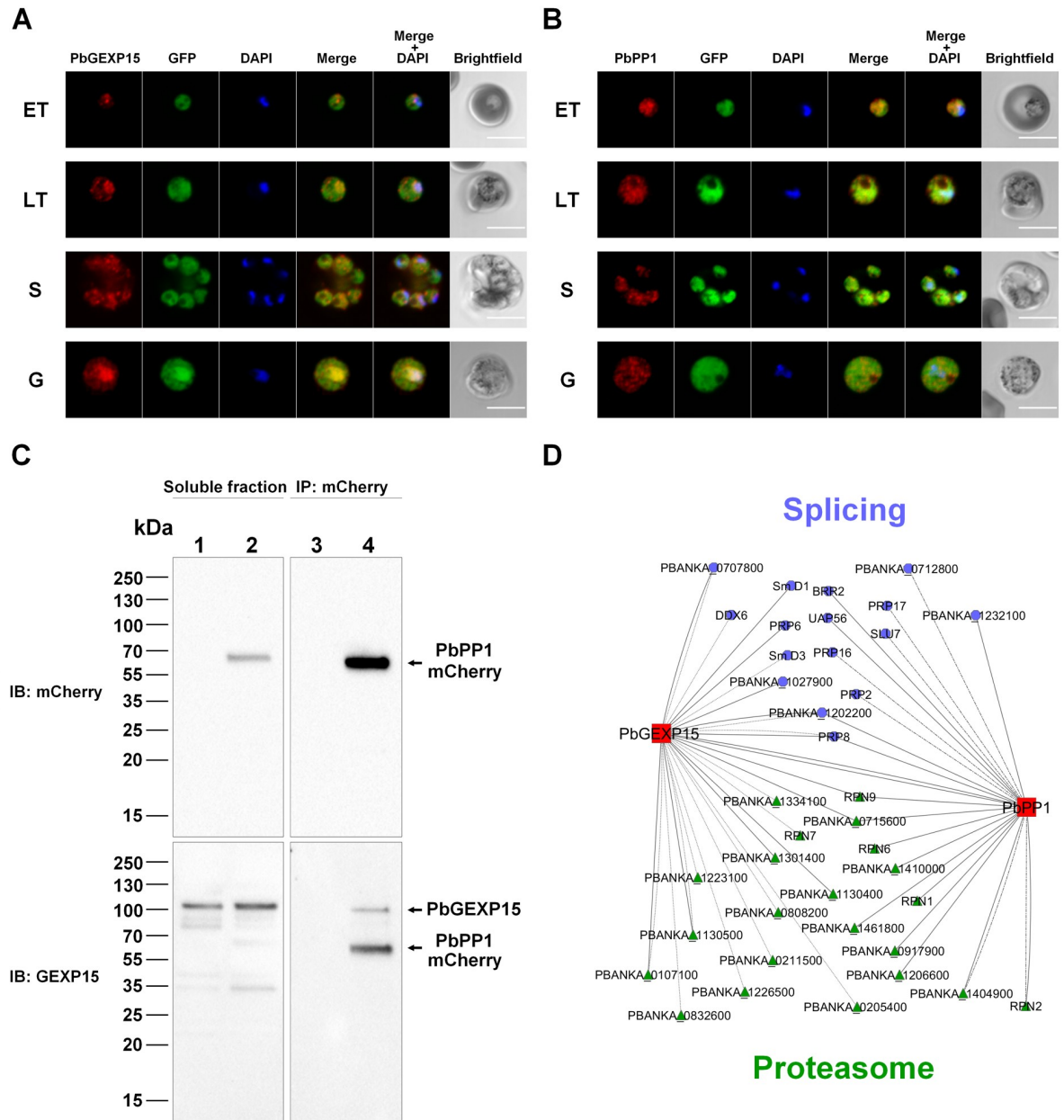
Based on the ability of recombinant GEXP15 to interact directly with PP1c, its effect on the phosphatase activity was assessed. As depicted in Fig 1D and 1E, using a quantity of PfPP1c generating a linear release of phosphate from pNPP substrate, the addition of either PbGEXP15<sub>4–590</sub> or a shorter PbGEXP15<sub>4–178</sub> protein strongly increased the dephosphorylation activity of PfPP1c in a concentration-dependent manner. A two-fold increase was observed at 100 pmol/well with both versions of PbGEXP15 proteins, suggesting that the main activating region of PfPP1c is carried by the N-terminal moiety of GEXP15. The use of the PbGEXP15<sub>4–178</sub> KKKKKAQA mutant abolished the regulatory effect on PP1 activity (Fig 1F). These data exclude any non-specific activation of PfPP1c and support the major role of RVxF in the function of GEXP15.

### Localization of PbGEXP15 and PbPP1 and detection of the complex in *P. berghei*

To follow up the localization of PbGEXP15 in blood stages, we generated in GFP-*P. berghei* lines [24], parasites expressing PbGEXP15-mCherry or PbPP1-mCherry (S3A and S3B Fig). The expression of these tagged proteins was checked by immunoblots using anti-mCherry antibody (S3C and S3D Fig). Examination of PbGEXP15-mCherry by immunofluorescence assays showed a distribution in the cytoplasm of all parasite stages examined along with clear punctate localization, suggesting potential cytoplasmic organelle structures (Fig 2A). Further, the PbGEXP15 signal clearly exhibited a pattern adjacent to and in the nucleus of trophozoite and gametocyte stages. With respect to PbPP1, the signal was observed throughout the cytoplasm with fluorescence partially overlapping DNA (Fig 2B). Earlier works reported similar distributions for GEXP15 and PP1 in *P. falciparum* [10,25], suggesting that the two proteins localize to the same compartments and could interact *in vivo* with each other. To confirm this, an anti-PbGEXP15 antibody raised against the recombinant protein and recognizing the native protein (~100kDa) (S3E Fig) was tested on eluates immunoprecipitated from PbPP1-mCherry parasite extracts with anti-mCherry antibody. As shown in Fig 2C, immunoblot analysis revealed the presence of PbGEXP15. These data, together with the results reported above, strongly support a physical interaction within the parasite.

### Identification of PbGEXP15 interacting proteins and common pathways with PbPP1

In order to provide new information about the functional pathways involving GEXP15, it was important to better define the supramolecular architecture of PbGEXP15 complexes. To this end and to characterize a potential dynamic interactome of GEXP15, we performed global immunoprecipitation of PbGEXP15-mCherry obtained from schizont and gametocyte soluble extracts using anti-mCherry antibody followed by mass spectrometry analysis (IP/MS). With respect to the schizont stages, bait recovery from the IP/MS of 3 biological replicates yielded between 72 and 232 spectral counts with an average of 47% coverage, supporting the selectivity of this approach (S1 Table). Results were validated and filtered if proteins were detected in at least two biological replicates out of three with  $\geq 2$  peptides and with peptides and spectra  $\geq 2$  fold compared with the control parental strain. In total, 18 proteins



**Fig 2. Localization and interactomes of PbGEXP15 and PbPPP1 in *P. berghei*.** Immunofluorescence assay of PbGEXP15-mCherry (A) and PbPPP1-mCherry (B) on early trophozoite (ET), late trophozoite (LT), schizont (S) and gametocyte (G) stages. The PbGEXP15 or PbPPP1 were labeled with anti-mCherry (red) and were detected within the parasite (GFP signal). Parasite nuclei are stained with DAPI (blue). Merged images represents the composite of PbGEXP15-mCherry or PbPPP1-mCherry along with GFP. Scale bar: 5  $\mu$ m. (C) Detection of endogenous PbGEXP15 and PbPPP1-mCherry from parental (lanes 1 and 3) and transfected *P. berghei* parasites (lanes 2 and 4). The different soluble protein extracts (lanes 1 and 2) were used with mCherry-beads to immunoprecipitate (IP) PbPPP1-mCherry (lanes 3 and 4). Immunoblot (IB) was performed using anti-mCherry (upper panel) then stripped and probed with anti-GEXP15 (lower panel). Note that the signal corresponding to PbPPP1-mCherry is still detectable after stripping and reprobing with anti-GEXP15 antisera. (D) Immunoprecipitations followed by mass spectrometry analysis (IP/MS) identified two common pathways between PbGEXP15 and PbPPP1 (in red). The RNA splicing network is represented in blue octagons and the proteasome in green triangles. Interactions from IP/MS in PbGEXP15-mCherry and PbPPP1-HA schizonts are indicated in solid lines and those coming from PbGEXP15-mCherry gametocytes in dotted lines. To complete the network, the *P. berghei* orthologs to the partners of PP1 previously identified in *P. falciparum* are included and represented in dash-dotted lines [17]. The image was generated with Cytoscape 3.

<https://doi.org/10.1371/journal.ppat.1007973.g002>

were identified including PbPP1 (S1 Table). This supports the western blot analysis, confirms the endogenous interaction between the two proteins and demonstrates the reliability of the IP/MS approach. According to their GO annotations, the majority of the partners (12/18) are linked to mRNA splicing (6 proteins) or proteasome core complex (6 proteins) indicating at least two networks around PbGEXP15. In the case of the IP/MS in gametocytes, results from two biological replicates have been filtered as described above and we identified 37 proteins (S2 Table). We noticed an overlap of 6 partners already detected in the schizont stage and being mainly involved in splicing and the proteasome. In addition to these proteins, 8 novel members of the proteasome core were identified as well as DDX6 and Smd3 in the mRNA splicing complex confirming the link of PbGEXP15 with these pathways. Regarding PbPP1, it was clearly detected in one replicate and at the limit of cut-off criteria in the second replicate (S2 Table, sheet 2).

To further identify potential shared pathways in the PP1-GEXP15 complexes, we took advantage of a *P. berghei* strain expressing PbPP1-HA and completed the PP1 interactome in schizont stages obtained by IP/MS [23]. In this initial work, we confirmed that PbPP1-HA binds with the two most conserved regulators LRR1 and inhibitor 2, interactions previously reported in *P. falciparum* [10,12], and a novel regulator designated as RCC-PIP [23]. In this study, further analysis of the PbPP1 interactome was performed. As could be expected given the high number of biological processes implicating PP1, a total of 178 proteins, including PbGEXP15, were identified in this IP/MS based on the cut-off criteria used above (S3 Table). These data revealed that the most important network corresponds to the 60S and 40S ribosomal proteins with the detection of 21 and 18 partners respectively and is consistent with outcomes obtained in different organisms [26–31]. When these data were compared with those obtained with the PfPP1 interactome [17], we observed 18 overlapping proteins. However, other partners can be added since they share similar functions such as HSP/chaperones, 60/40S ribosomal proteins, histones and transcription factors.

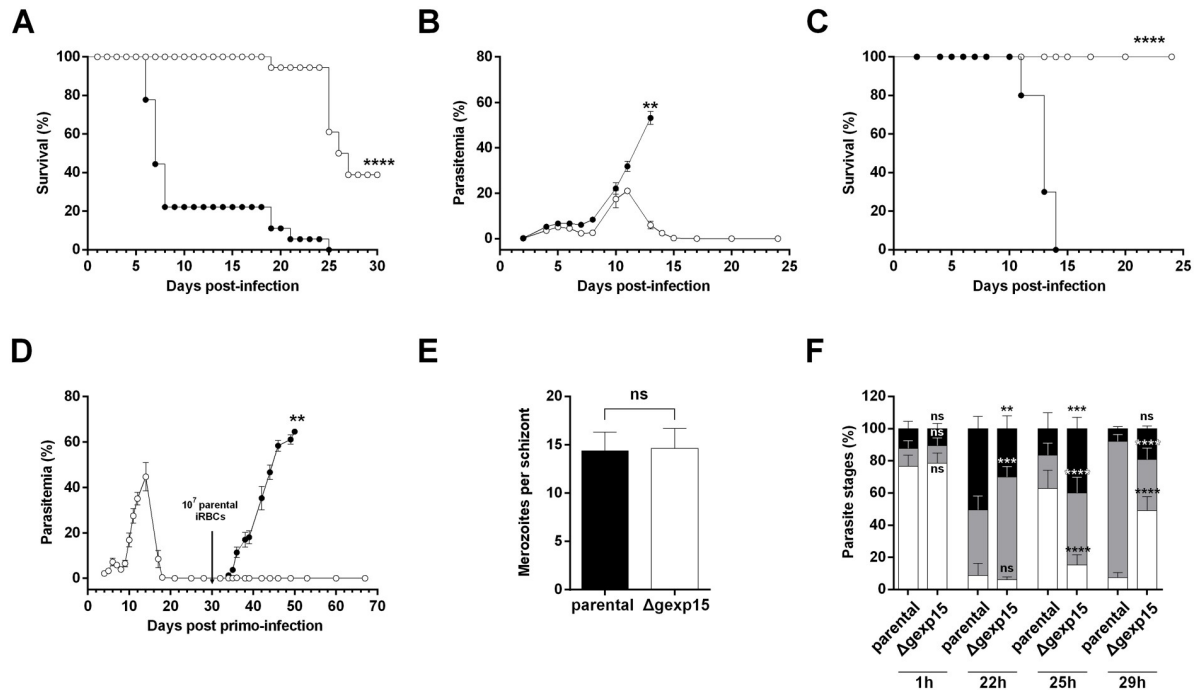
Most interestingly, comparative analysis of GEXP15 and PP1 interacting proteins revealed that both proteins are part of common protein complexes (Fig 2D). Indeed, 5 and 10 proteins identified in the PbPP1 interactome are known to be part of the mRNA splicing and the proteasome complexes respectively, suggesting that the GEXP15/PP1 complex is a component of two different networks. Of note, previous studies have highlighted the importance of PP1 in these processes in various organisms, including *P. falciparum* [17,26,32–35].

## Disruption of the GEXP15 gene

To investigate the function of GEXP15, a complete disruption of *gexp15* in *P. berghei* by double homologous recombination was attempted. A construct comprising 5' and 3' UTRs of *pbgexp15* flanking the pyrimethamine-resistance cassette was used for selection after parasite transfection (S4A Fig). Among the pyrimethamine-resistant blood parasites, two clones were selected ( $\Delta$ *gexp15*cl1 and  $\Delta$ *gexp15*cl2) and the presence of the double crossover was confirmed along with the absence of the wild locus (S4A Fig). We also performed immunoblot experiments using anti-GEXP15 antisera on schizont parasites. PbGEXP15 protein was only detected in parental, but not in the  $\Delta$ *gexp15* parasites, demonstrating a lack of PbGEXP15 protein expression in these clones (S4B Fig).

To explore the phenotype(s) of these parasites in more detail, we used two different mouse malaria models, C57BL/6 for experimental cerebral malaria (ECM) and BALB/c for malaria-linked pathologies (severe anemia, hyperparasitemia). The survival was based on euthanizing mice according to criteria described in the Materials and Methods section. When C57BL/6 mice were infected with the parental strain ( $10^6$  parasites), about 80%





**Fig 3. Effect of PbGEXP15 knock-out on parasite virulence and fitness.** (A) C57BL/6 mice were intraperitoneally inoculated with  $10^6$  of parental (black circles) or  $\Delta$ gexp15 (white circles) infected red blood cells (iRBCs). The cumulative survival rates of three independent experiments ( $n = 6$ /experiment, see Table 1) are indicated (Log-rank test, \*\*\*\*  $p < 0.0001$ ). (B) BALB/c mice were inoculated in the same conditions and the course of infection was observed by blood smears. The results of one representative experiment out of two are shown as the mean parasitemia  $\pm$  SEM ( $n = 5$ /experiment, see Table 1) (Wilcoxon test, \*\*  $p < 0.01$ ). (C) Cumulative survival rates of BALB/c mice were indicated in a second graph (Log-rank test, \*\*\*\*  $p < 0.0001$ ). (D) BALB/c mice were inoculated with  $10^6$  of  $\Delta$ gexp15 iRBCs at day 0 (white circles). After parasite clearance, the mice (white circles) and matched naïve mice of the same age (black circles) were inoculated with  $10^7$  of parental iRBCs at day 30 (black arrow). The results of one out of two representative experiments are shown as the mean parasitemia  $\pm$  SEM ( $n = 11$  in total, see Table 1) (Wilcoxon test, \*\*  $p < 0.01$ ). (E) Number of merozoites per schizont obtained after *in vitro* culture of parental and  $\Delta$ gexp15 parasites. Data represent mean  $\pm$  SD of two independent experiments ( $n = 60$ ). No significant (ns) difference was observed (Mann–Whitney *U* test). (F) Parental and  $\Delta$ gexp15 parasites were synchronized *in vitro* and mice were intravenously infected. After 1, 22, 25 and 29h post-infection, blood smears were performed and the percentages of rings (in white), trophozoites (in grey) and schizonts (in black) were determined. Data shown represent means  $\pm$  SD of two independent experiments in duplicate (Tukey’s multiple comparison test, no significant (ns), \*\*\*  $p < 0.001$ , \*\*\*\*  $p < 0.0001$  compared to parental at the same timing).

<https://doi.org/10.1371/journal.ppat.1007973.g003>

succumbed within 6–8 days post-infection from ECM (Fig 3A, Table 1) due to blood-brain barrier disruption as evidenced by Evans blue staining (S4C Fig). In contrast, none of C57BL/6 mice infected with the  $\Delta$ gexp15 parasites exhibited any ECM symptoms and 61% succumbed exclusively to hyperparasitemia between days 20–25 post-infection. In the case of BALB/c mice, as expected, all mice succumbed from hyperparasitemia before day 15 after infection with  $10^6$  parental parasites (Fig 3B). Importantly, all BALB/c mice infected with  $\Delta$ gexp15 survived infection with a rapid clearance of all blood parasites after a peak of between days 10 to 12 (Fig 3B and 3C). Given these data, we further tested whether  $\Delta$ gexp15cl1 infected BALB/c mice that survived the infection could be protected from a secondary infection with parental parasites. As depicted in Fig 3D and Table 1, mice challenged with  $10^7$  infected red blood cells (iRBC) showed either low parasitemia ( $< 1\%$ ) that was quickly cleared or no detectable infection up to 40 days post reinfection, while mice in the control group succumbed to the infection. A similar result was observed with  $\Delta$ gexp15cl2 (Table 1). These results suggest that the infection of BALB/c with  $\Delta$ gexp15 induces a potent protective response against parental parasites.

**Table 1. Time course of parental and  $\Delta$ gexp15 parasites infection in C57BL/6 and BALB/c mice and protection of BALB/c mice challenged with parental parasites.**

Mouse strain	<i>P. berghei</i> strain		Primo infection dose (No. of iRBCs) <sup>a</sup>	No. of mice surviving from ECM <sup>b</sup>	No. of mice surviving from hyper parasitemia	Challenge dose (No. of iRBCs) <sup>a,c</sup>	No. of protected mice
C57BL/6	parental	Exp1	10 <sup>6</sup>	1/6	0/1		
		Exp2		2/6	0/2		
Exp3	1/6	0/1					
	$\Delta$ gexp15cl1	Exp1	10 <sup>6</sup>	6/6	5/6		
		Exp2		6/6	1/6		
		Exp3		6/6	1/6		
BALB/c	parental	Exp1	10 <sup>6</sup>	5/5	0/5		
		Exp2		5/5	0/5		
	$\Delta$ gexp15cl1	Exp1	10 <sup>6</sup>	5/5	5/5	10 <sup>7</sup>	5/5
		Exp2		5/5	5/5		
$\Delta$ gexp15cl2	Exp2	10 <sup>6</sup>	6/6	6/6	10 <sup>7</sup>	6/6	
	parental	Exp2	Not infected			10 <sup>7</sup>	0/6

<sup>a</sup> Parasites were inoculated by intraperitoneal injection of infected red blood cells (iRBCs).

<sup>b</sup> Survival linked to ECM was assessed by specific clinical symptoms at low parasitemia, between 6–8 days post-infection (p.i) and by brains staining using Evans blue.

<sup>c</sup> Mice were challenged with parental parasites at day 30 post primo-infection.

<https://doi.org/10.1371/journal.ppat.1007973.t001>

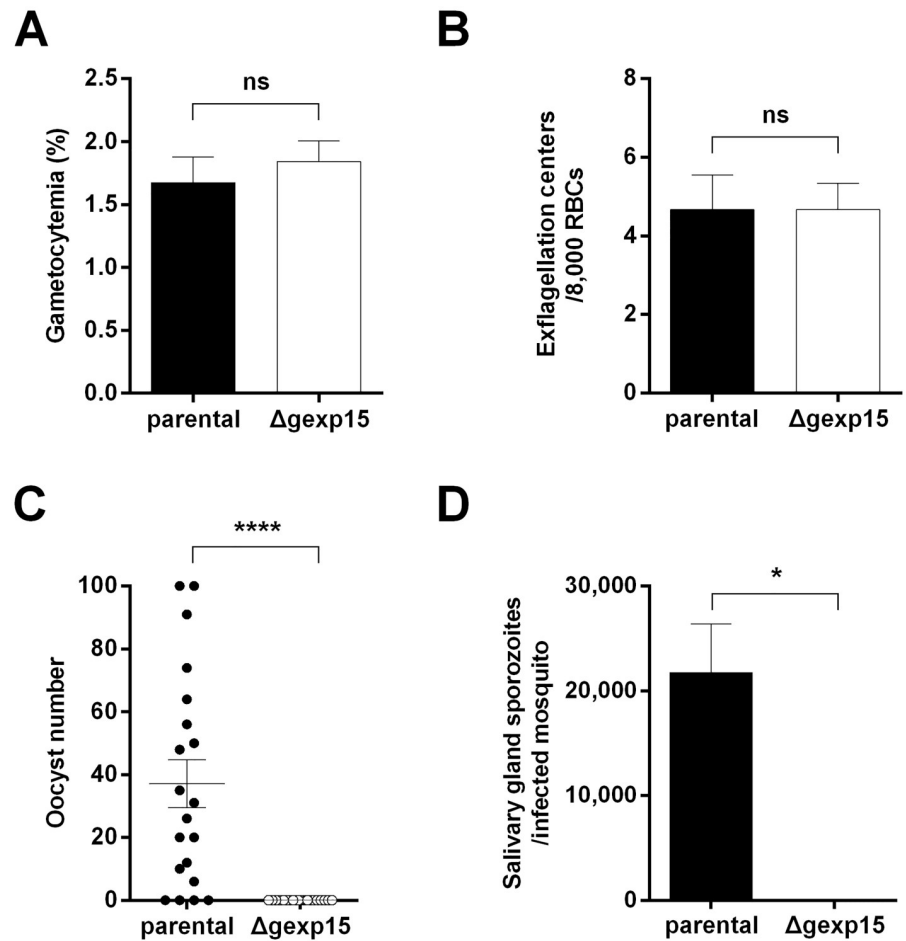
### Intraerythrocytic development of $\Delta$ gexp15 parasites

To assess the effects of deficiency of PbGEXP15 expression on parasite growth, we investigated their intraerythrocytic development. First, the number of merozoites per schizont observed *in vitro* did not significantly differ between parental and  $\Delta$ gexp15 parasites (Fig 3E). Thereafter, the growth rate was followed in mice infected intravenously with purified schizonts obtained from overnight cultures of parental and  $\Delta$ gexp15 parasites. At 1h post-infection, as shown in Fig 3F, both parental and  $\Delta$ gexp15 parasites exhibited ~80% rings suggesting a similar ability to invade. After 22h, a slight delay in the maturation of  $\Delta$ gexp15 parasites was observed with 64% of trophozoites and 30% of schizonts versus 41% and 50% respectively in parental parasites. At 25h, the examination of parental parasites showed 63% rings while the  $\Delta$ gexp15 parasites presented 15% rings ( $p < 0.0001$ ). The follow up at 29 h post-infection underscored the delay in transition (85% trophozoites in parental versus 32% in  $\Delta$ gexp15,  $p < 0.0001$ ). These data clearly indicate that the depletion of PbGEXP15 protein delays the intraerythrocytic growth of *P. berghei*.

### Role of GEXP15 in transmission to the mosquito

Consistent with the first proteomic analysis [19] and this study showing the expression of GEXP15 in gametocytes, we examined whether PbGEXP15 is essential at this stage. Unexpectedly, we noticed that the gametocytemia of  $\Delta$ gexp15 parasites did not differ significantly when compared to parental parasites (Fig 4A) and the deletion seemed to have no effect on the number of exflagellation centers of male gametocytes (Fig 4B). These results indicate that PbGEXP15 did not affect the early male gametocyte development.

In order to examine the role of PbGEXP15 during the mosquito stages and due to the difficulties to obtain reproducible and reliable data from *in vitro* ookinete conversion assays with the pG230 line that showed a very low conversion efficiency to ookinetes [36], we used parental or  $\Delta$ gexp15 infected mice to feed *Anopheles stephensi* mosquitoes. Two independent experiments were performed and the dissection of the mosquito midguts at day 9 confirmed that 80% of blood meals were positive with parental parasites (Fig 4C). Interestingly, in contrast to parental parasites,  $\Delta$ gexp15 parasites failed to initiate the formation of oocysts. This result was



**Fig 4. Essentiality of PbGEXP15 in the parasite development in mosquito.** (A) Comparison of gametocytemia from parental and Δgexp15 parasites. Mean ± SEM of the number of gametocytes is indicated for two independent experiments (n = 8). No significant difference (ns) was observed (Mann–Whitney U test). (B) Comparison of exflagellation from parental and Δgexp15 parasites. Mean ± SEM of the number of exflagellation centers is indicated from two independent experiments (n = 6). No significant difference (ns) was observed (Mann–Whitney U test). (C) Comparison of midgut oocysts from parental and Δgexp15 parasites (n = 20). Mosquito midguts were dissected at day 9 and average oocyst number ± SEM is indicated from two independent experiments (Mann–Whitney U test, \*\*\*\* p<0.0001). (D) Quantification of sporozoites from mosquitoes infected with parental and Δgexp15 parasites. Salivary glands were dissected at day 18 and sporozoites were manually counted. Bars indicate mean ± SEM of the number of sporozoites per infected mosquito from 4 technical replicates of two independent experiments (Mann–Whitney U test, \* p<0.05).

<https://doi.org/10.1371/journal.ppat.1007973.g004>

confirmed by the lack of Δgexp15 sporozoites in the salivary glands observed at day 18 whereas 22,000 sporozoites, on average, were detected with parental parasites (Fig 4D). We conclude that PbGEXP15 is essential for parasite development in the mosquito.

### Quantitative proteomic and phosphoproteomic analyses of Δgexp15 schizonts

Previous studies showed that phosphatase inhibitors, comprising those acting on PP1, are toxic to cells and that the uncontrolled activity of the catalytic phosphatase subunits could cause apoptotic cell death [37]. Given the capacity of PbGEXP15 to interact with and regulate the dephosphorylation activity of PP1, we explored whether PbGEXP15 depletion could

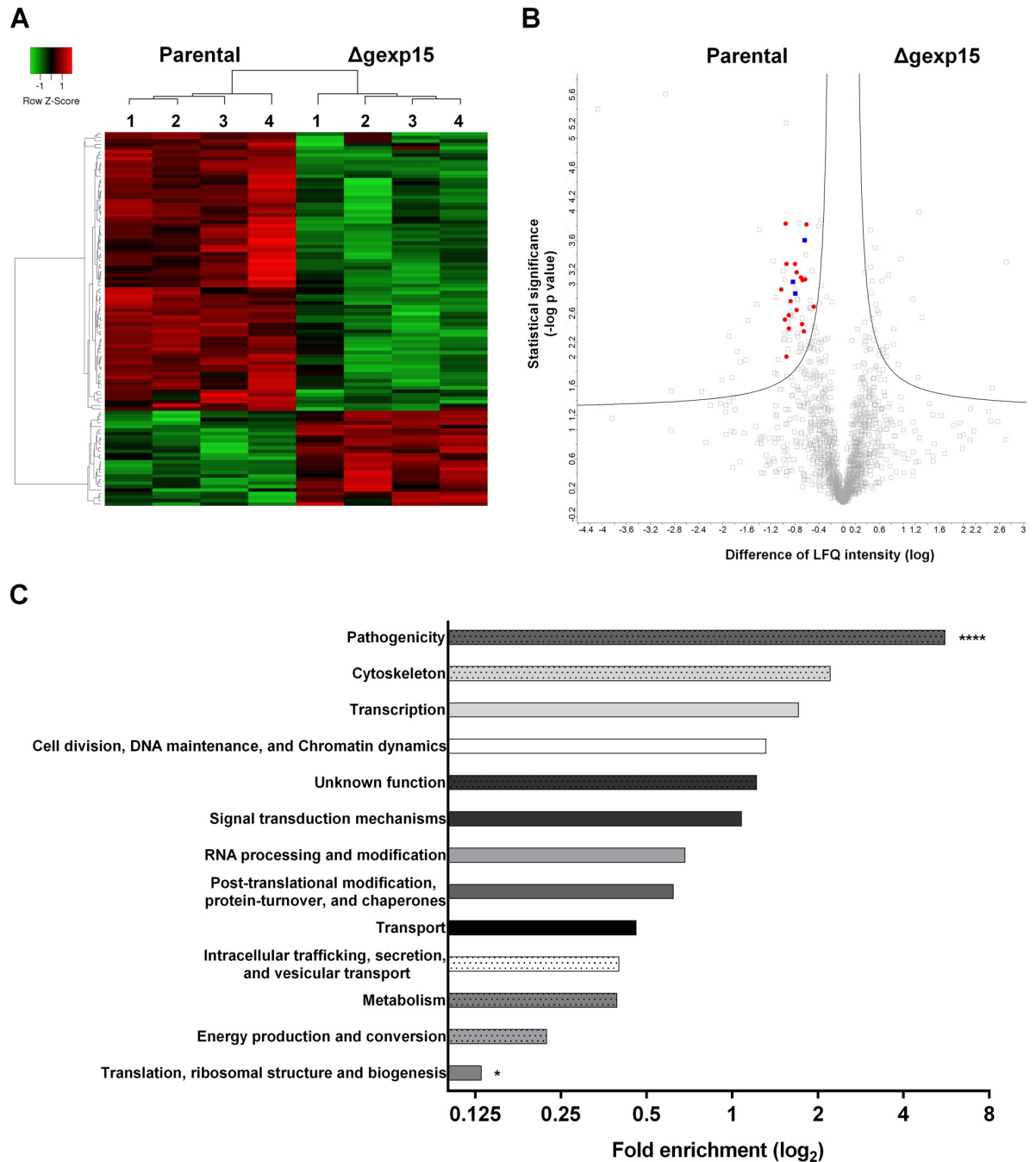
change the global phospho-proteomic patterns of  $\Delta$ gexp15 parasites. To investigate this, parental and  $\Delta$ gexp15c11 schizonts were compared to assess proteomic and phosphoproteomic profiles. The quantitative experiments were performed on four biological replicates and three technical replicates.

First, for the whole proteome analysis, we identified 2188 *Plasmodium* proteins across samples corresponding to 43% of the predicted proteome of *P. berghei*. We retained 1484 *Plasmodium* proteins that were reliably quantified in four biological replicates in at least one group (S4 Table). In this global proteome, PbPP1 was detected and no difference was observed between levels in parental and  $\Delta$ gexp15 parasites. We next focused on proteins with significant changes in parental and  $\Delta$ gexp15 proteomes (FDR<0.05). The results indicate a total of 106 proteins (accounting for ~7% of the total proteins identified) whose abundance is significantly altered, of which 27 and 79 showed a significant increase and decrease respectively in comparison to parental parasites (Fig 5A and 5B and S4 Table). An enrichment analysis of the biological processes was then performed for these proteins versus the global proteome (Fig 5C). Interestingly, 16 proteins playing a role in the pathogenicity, such as RONs and MSPs, were detected with a significant decrease in the  $\Delta$ gexp15 parasites and correspond to the highest significant enrichment (5.6-fold,  $p<0.001$ ) (Fig 5B and 5C). We also noticed an under-representation of proteins involved in translation (0.13-fold,  $p<0.01$ ) while 3 AP2 transcription factors were enriched among the up-regulated proteins (5.25-fold,  $p<0.05$ ) (Fig 5B and 5C and S4 Table). Of note, many proteins involved in these three biological processes have already been described to interact with PP1 (this study and [17,32,38]). In total, 12% (13/106) of the altered proteins, such as AMA1, RON-2, -4 and -5, are detected in the *Plasmodium* interactomes of PP1 (S5A Fig and S4 Table). Collectively, these data indicate that the knock-out of *pbgexp15* impacted the expression of several PP1 partners and would tend to confirm the commonality of signaling pathway(s) between GEXP15 and PP1.

Next, we explored the phosphoproteome of parental and  $\Delta$ gexp15 parasites. In total 2460 different phosphorylation sites of *P. berghei* were identified and quantified belonging to 780 *Plasmodium* proteins (Fig 6A and S5 Table). We observed significant changes for 166 phosphopeptides corresponding to 118 proteins (FDR<0.01) (Fig 6B and S5 Table). Levels of phosphorylation of most of the phosphosites (143 phosphosites) were lower in  $\Delta$ gexp15 when compared to the phosphoproteome of the parental parasites. The analysis showed a significant enrichment in proteins acting on RNA metabolism (1.9-fold,  $p<0.01$ ) with 11 out of 12 phosphosites hypophosphorylated in  $\Delta$ gexp15 parasites (Fig 6C). We also noticed the hypophosphorylation of 8 proteins engaged in transcriptional regulation (including AP2 transcription factors), 5 proteins playing a role in post-translational modifications/chaperones and 4 proteins involved in trafficking (S5 Table). A smaller set of 19 proteins was found to be hyperphosphorylated in the  $\Delta$ gexp15 parasites but most of these proteins have an unknown function. We also observed that overall 18% (21/118) of the phosphoproteins showing significant changes in phosphorylation were previously reported in the *Plasmodium* interactomes of PP1 suggesting that the phenotypes observed above could be due to a deregulation of the PbPP1 activity (S5A Fig).

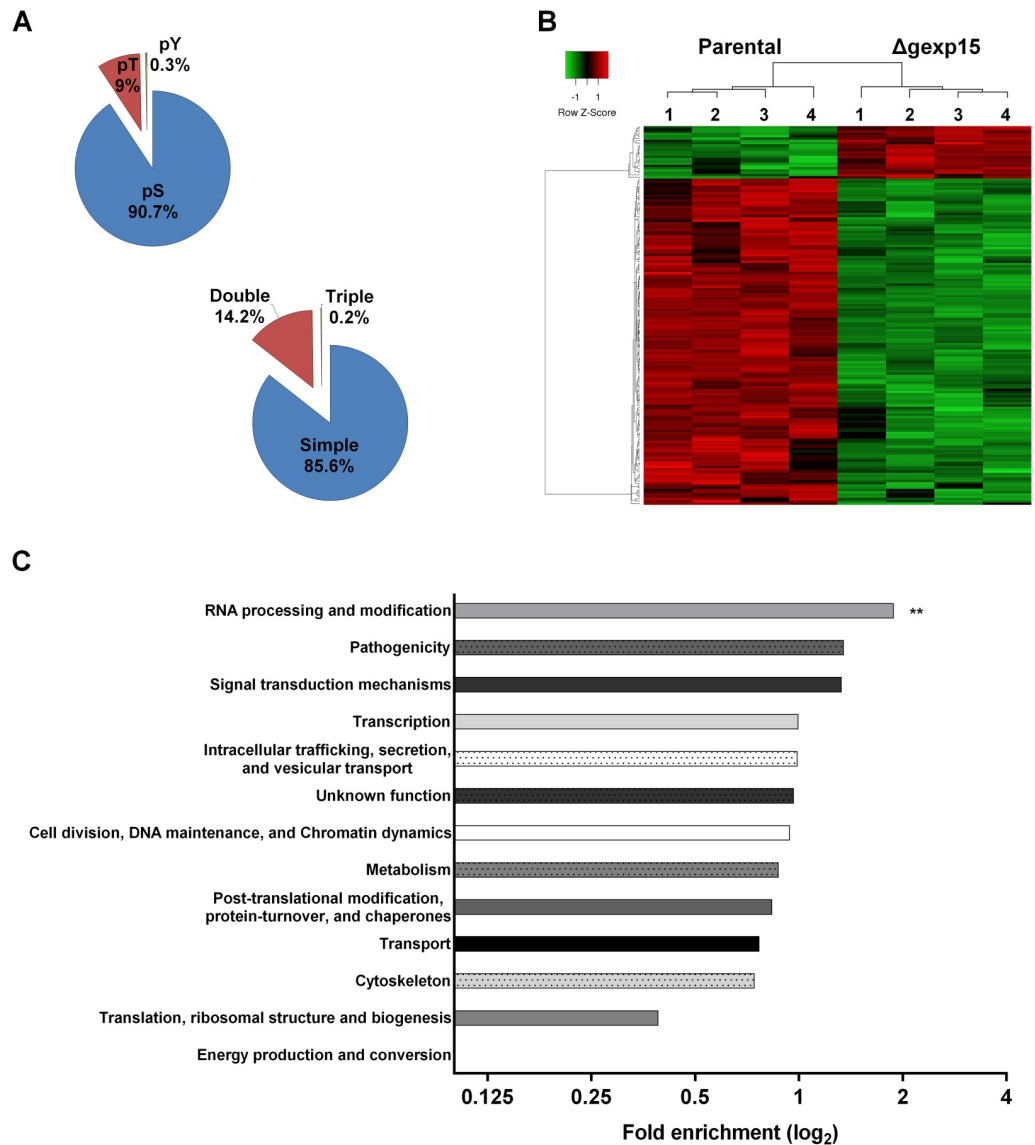
### Quantitative proteomic and phosphoproteomic analyses of $\Delta$ gexp15 gametocytes

To explore more deeply the role and the essentiality of GEXP15 in sexual and mosquito stages, we purified parental and  $\Delta$ gexp15c11 gametocytes for proteomic and phosphoproteomic studies. The quantitative experiments were performed on three biological replicates and three technical replicates.



**Fig 5. Differential proteome of parental and  $\Delta$ gexp15 schizonts in *P. berghei*.** (A) Hierarchical clustering and heatmap of proteins with a significant differential abundance in parental and  $\Delta$ gexp15 schizonts (FDR<0.05,  $S_0 = 0.1$ ). (B) Volcano plot representation of proteins quantified by mass spectrometry in parental and  $\Delta$ gexp15 schizonts (FDR<0.05,  $S_0 = 0.1$ ). AP2 transcription factors are indicated as blue squares and proteins involved in the pathogenicity as red dots. (C) Functional enrichment of parental and  $\Delta$ gexp15 schizonts proteomic profiles. Fold enrichment was performed on the 106 filtered proteins relative to all *P. berghei* proteins detected in the proteome. The x-axis represents the fold enrichment ( $\log_2$ ) for the indicated function (Hypergeometric test, \*\*  $p < 0.01$ , \*\*\*\*  $p < 0.0001$ ).

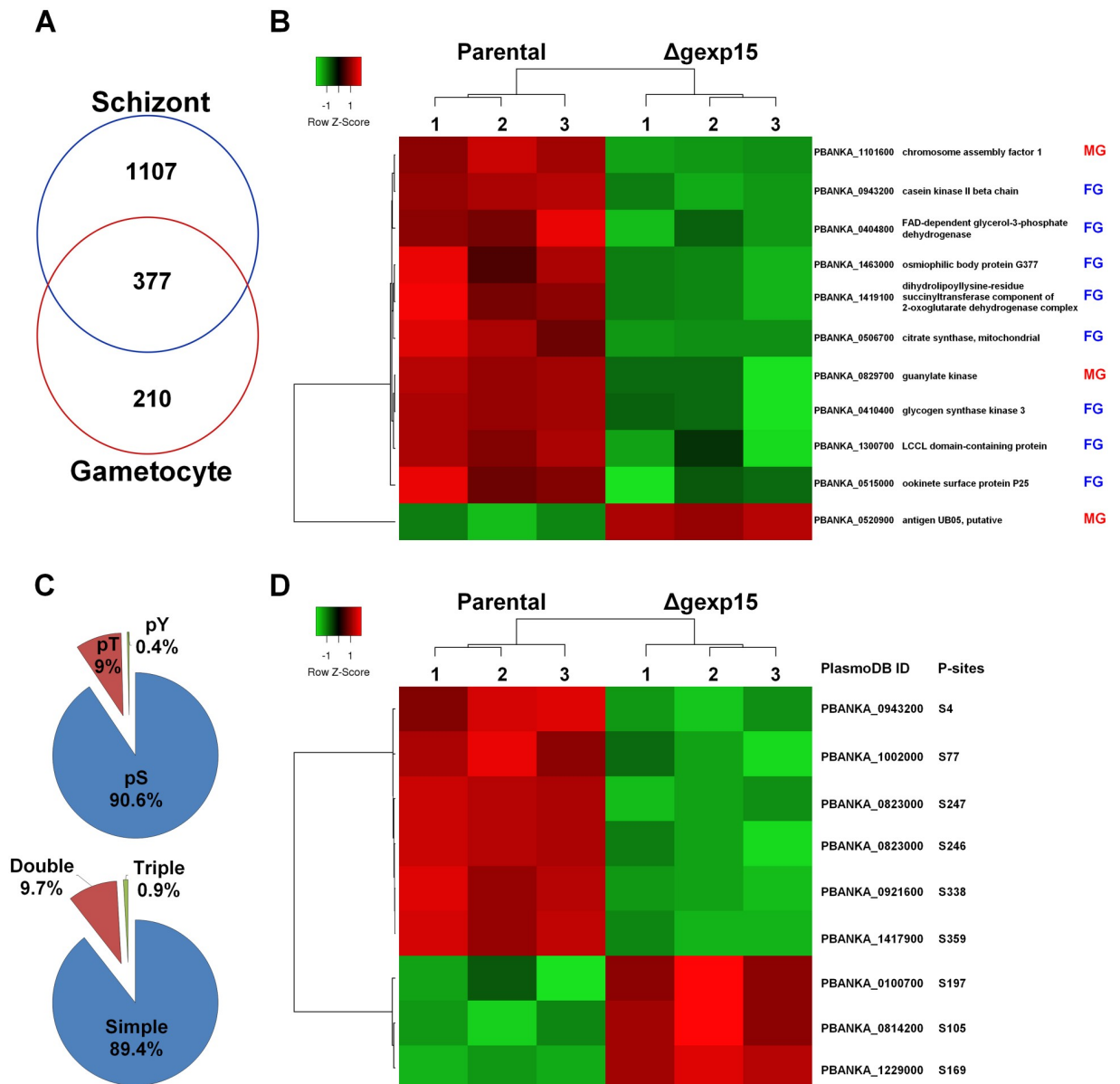
<https://doi.org/10.1371/journal.ppat.1007973.g005>



**Fig 6. Differential phosphoproteome of parental and Δgexp15 schizonts in *P. berghei*.** (A) Distribution of phospho-Ser (pS), phospho-Thr (pT), and phospho-Tyr (pY) residues and multiplicity of phosphosites detected in schizonts (n = 2460). (B) Hierarchical clustering and heatmap of phosphosites with a significant differential in parental and Δgexp15 schizonts (FDR<0.01, S0 = 0.1). (C) Functional enrichment of parental and Δgexp15 schizont phosphoproteomic profiles. Fold enrichment was performed on the 166 filtered phosphosites relative to all *P. berghei* phosphosites detected in the phosphoproteome. The x-axis represents the fold enrichment (log<sub>2</sub>) for the indicated function (Hypergeometric test, \*\* p<0.01).

<https://doi.org/10.1371/journal.ppat.1007973.g006>

Firstly, we determined the gametocyte proteome and identified 587 *Plasmodium* proteins that were reliably quantified in three biological replicates in at least one group (S6 Table). As depicted in Fig 7A, 64% of these proteins are also detected in the schizont proteome, a percentage similar to previous overlaps in *P. berghei* (50%) and *P. falciparum* (59%) [39,40]. Significant changes in parental and Δgexp15 proteomes (FDR<0.05) were observed for 11 proteins, with a significant decrease in abundance for 10 proteins in mutant parasites (Fig 7B and S6 Table). One of these proteins, PbGSK3 (PBANKA\_0410400) that decreased significantly in Δgexp15 gametocytes and for which commercial antisera were available was tested by western



**Fig 7. Differential proteome and phosphoproteome of parental and  $\Delta$ gexp15 gametocytes in *P. berghei*.** (A) Venn diagram of proteins detected in the proteomes of schizonts and gametocytes. (B) Hierarchical clustering and heatmap of proteins with a significant differential abundance in parental and  $\Delta$ gexp15 gametocytes (FDR<0.05,  $S_0 = 0.1$ ). The sex enrichment in gametocyte stage is indicated for each protein. MG: male gametocyte, FG: female gametocyte [40–42]. (C) Distribution of phospho-Ser (pS), phospho-Thr (pT), and phospho-Tyr (pY) residues and multiplicity of phosphosites detected in gametocytes (n = 444). (D) Hierarchical clustering and heatmap of phosphosites with a significant differential in parental and  $\Delta$ gexp15 gametocytes (FDR<0.01,  $S_0 = 0.1$ ). The position and the residue of the phosphosites are indicated.

<https://doi.org/10.1371/journal.ppat.1007973.g007>

blot experiments in two independent biological samples. Results indicated a drastic decrease of this protein in  $\Delta$ gexp15 gametocytes when compared to the parental strain, validating the proteomic analysis (S5B and S5C Fig).

Interestingly, 8 proteins out of the 11 have been described being enriched in female gametocytes and the others 3 in male gametocytes [39–42]. Among these proteins, we detected G377 (PBANKA\_1463000) which is localized in the osmiophilic bodies of female gametocytes and

plays a role in the formation of these organelles and in the induction of gametogenesis with a delay in female gamete egress [43,44]. Furthermore, diverse studies have demonstrated that P25 (PBANKA\_0515000) and Lap2 (PBANKA\_1300700) play important roles in parasite transmission by mosquitoes and more precisely in the ookinete and oocyst stages [45–48]. Altogether, these data confirmed the phenotypic analyses observed and suggested that the deletion of *pbgexp15* impacted key proteins in mosquito transmission. Concerning the phosphoproteome of parental and  $\Delta$ *gexp15* parasites, we identified 444 different phosphorylation sites of *P. berghei* belonging to 278 proteins and we observed significant changes for only 9 phosphopeptides corresponding to 8 proteins (FDR<0.01) (Fig 7C and 7D and S7 Table). Unlike the proteome, these proteins did not seem to exhibit features linked to sexual differentiation similar to those shown above. Only two proteins are clearly described to be enriched in male and one in female gametocytes (S7 Table).

## Discussion

The functional diversity of the PP1 catalytic subunit, an essential phosphatase enzyme, is now clearly attributable to more than 200 regulators that have been described in diverse eukaryotic organisms [8,9]. To date, only four conserved regulators of PP1 have been identified and characterized in *P. falciparum* [10–12,15]. A more recent study, using an Y2H screening to examine the global PP1 interactome in *P. falciparum*, identified GEXP15 as a potent regulatory partner of PP1 [17]. Here we confirmed the direct interaction of PbGEXP15 with PP1 and demonstrated its capacity to control the phosphatase activity. These results extend our previous data showing the capacity of conserved regulators to affect PP1 activity to a specific protein expressed by *Plasmodium*. Structure-activity studies indicate a major contribution of the well-known RVxF consensus binding motif to the function of GEXP15. Moreover, a short N-terminal region of GEXP15 was able to bind PP1 and to increase its phosphatase activity in a similar manner to that observed with the full length protein. The mutation of the RVxF motif, present in this N-terminal region, completely abolished this regulation. These data suggest that this region seems to carry the regulatory function of GEXP15 on PP1 activity.

To further explore the functional role of GEXP15, we examined the impact of its deletion in the rodent malaria parasite *P. berghei*. Phenotypic analyses of these deficient parasites revealed a drastic effect on their development both in mice and mosquitoes. Indeed, while BALB/c mice infected with parental parasites succumbed to infection from hyperparasitemia, they were able to efficiently clear  $\Delta$ *gexp15* parasites. This could be linked at least in part to the retarded multiplication that we observed. Further, surviving mice exhibited a protection against a secondary challenge by parental parasites, suggestive of a role of these deficient parasites in inducing protective responses.

When C57BL/6 mice susceptible to ECM were tested,  $\Delta$ *gexp15* parasites were found to be unable to induce ECM. Investigations on ECM in the mouse model indicated that it is a complex process involving both the parasite and the host molecules including proinflammatory cytokines [49–52]. However, when the outcomes of infections by  $\Delta$ *gexp15* parasites of C57BL/6 and BALB/c mice (prototypical Th1 and Th2-type strains respectively) were compared, we observed a higher rate of mortality in C57BL/6 (ECM model) due to hyperparasitemia than in BALB/c (hyperparasitemia model), suggesting a difference in the immune responses raised by these hosts towards the infection with  $\Delta$ *gexp15* parasites. Earlier studies mainly focused on phenotypic analyses have shown similar data obtained with targeted disruption of *hmgb2* described as a pro-inflammatory protein [53], MSP7 involved in invasion of erythrocytes [54] or plasmepsin-4 contributing to hemoglobin digestion [55]. Although, the parasite derived



molecules triggering host responses are still largely unknown, the use of  $\Delta$ gexp15 parasites might contribute for a better understanding of the protective mechanisms against ECM.

Of note, the essentiality of GEXP15 in the blood stages was further supported by a recent study using a piggyBac transposon inserted randomly in *P. falciparum* genome [56] in which they did not obtain viable parasites with a disrupted *pfgexp15* gene despite the presence of 35 potential insertion sites.

For an in-depth dissection of the biological functions of GEXP15, we performed quantitative proteomic and phosphoproteomic analyses. To the best of our knowledge, our proteomic study is the first in which a PP1 partner has been suppressed in *Plasmodium*.

Of particular interest are low abundance proteins in schizonts that are members of the AP2 transcription factor family, which play a role in the regulation of gene expression, and invasion proteins including RONs and AMA1. The low abundance of three AP2 transcription factors, that have been suggested to be essential [57,58], could explain the general down-regulation observed for the proteins whose expression varies in  $\Delta$ gexp15 parasites. These results highlight the role played by GEXP15 and could explain the attenuated virulence of  $\Delta$ gexp15 parasites in blood stages.

In our global phosphoproteomic analysis in schizonts, the data indicate the hyperphosphorylation of 19 proteins in  $\Delta$ gexp15 when compared to parental parasites. This could be expected as the lack of GEXP15, an activator of PP1 *in vitro*, may lead to a decrease in PP1 activity and consequently an increase of phosphorylation of target proteins. Should this be the case, these hyperphosphorylated proteins could be considered as potential substrates of the complex PP1-GEXP15. Interestingly, the RON2 protein, present in lower abundance in  $\Delta$ gexp15 parasites, was found to be hyperphosphorylated, possibly attenuating its known function in invasion [59–63]. However, synchronized  $\Delta$ gexp15 parasites did not show any delay in the first invasive cycles, suggesting a functional overlap and/or compensation between proteins involved in invasion [64] or that the induced defect did not attain a sufficient threshold to interrupt the invasion at least during the first cycles. On the other hand, the data suggest an unanticipated role of GEXP15 in the phosphorylation process. Indeed, we observed a drop in the phosphorylation levels of 100 proteins when compared to controls. These data could be explained either by free and uncontrolled PP1 capable of non-specifically dephosphorylating many and diverse substrates in the absence of GEXP15 and/or by an inhibitory role of GEXP15 on PP1 activity in *Plasmodium*. This latter possibility cannot be excluded as *in vitro* experiments, which showed a positive effect of GEXP15 on PP1 activity, were performed with the non-natural pNPP substrate. In addition, any post-translational modifications of GEXP15 *in vivo* could affect its function, which may be different from that observed with the recombinant protein. In this context, it has been shown that the phosphorylation status of Inhibitor-1, a well-known regulator of human PP1, differentially alters its function [65–67].

Concerning the proteome in gametocyte stages, we detected 11 proteins whose expression varies in  $\Delta$ gexp15 parasites. Among these proteins, eight, described to be overexpressed in female gametocytes, are present at lower levels in these deficient parasites. These data along with the above observations indicate that the lack of GEXP15 impacts neither the number of gametocytes nor the exflagellation of male gametocytes and strongly suggest that GEXP15 could function downstream in female gamete formation/egress/fertility or zygote-to-ookinete development. Supporting this is the under-abundance of the G377 protein in  $\Delta$ gexp15 that has been reported as a key actor in female egress/emergence (43, 44). Additional proteins could also contribute to the observed phenotype include Lap2, demonstrated as being important in the mosquito transmission [47,48] or AP2-O2 that was hypophosphorylated on 2 serines in  $\Delta$ gexp15 schizonts compared to the parental parasites. This latter transcription factor is described as being crucial in the development of ookinetes and oocysts in *P. berghei* [58] while

in *P. yoelii*, a knock-out of AP2-O2 did not seem to affect the gametocytes and ookinetes but only the number of oocysts and sporozoites [68]. In this study, unfortunately, the pG230 line used to generate  $\Delta$ gexp15 parasites exhibits very low conversion efficiency *in vitro*, hampering these studies. Of note, transfections of two other *P. berghei* strains did not allow the generation of viable knock-out or stable inducible knock-down parasites. Whatever the explanation, it is clear that the depletion of GEXP15 led to a complete abolition of oocyte/sporozoite formation *in vivo*. Taken together, our observations suggest that while the lack of GEXP15 expression could be transiently compensated in intraerythrocytic growth in the blood, this compensation seems to be insufficient with a high fitness cost in the mosquito.

Interestingly, an earlier study suggested that GEXP15 was a potential orthologue of human CD2BP2 (CD2 Cytoplasmic Tail Binding Protein 2) [69]. CD2BP2 has been described to interact with splicing factors and PP1 through a GYF domain [34] and an RVxF motif respectively [35]. The sequence analysis of PbGEXP15 reveals only 14% identity with HsCD2BP2, but it presents a GYF like-domain, even if this does not match perfectly the consensus sequence [70]. However, although the IP/MS of PbGEXP15-mCherry demonstrated that several splicing factors are potential partners of GEXP15, its contribution in the splicing function in *Plasmodium* requires further investigation in the future.

In conclusion, the results shown here indicate that the viability of parasites in the absence of GEXP15 expression is accompanied by major alterations that could contribute to the avirulent phenotype of these parasites and their incapacity to produce oocysts. These alterations could affect spliceosome and proteasome pathways along with extensive changes to the phosphorylation patterns of  $\Delta$ gexp15 parasites that may be linked to an uncontrolled PP1, capable of dephosphorylating inappropriate substrates. Additional studies are required to examine each novel aspect of the phenotypes of these  $\Delta$ gexp15 parasites and the potential alteration of the RNA splicing pathway.

## Materials and methods

### Plasmids

Plasmids pGADT7/pGBKT7, pETDuet-1 and pGEX4T3 were purchased from Clontech, Novagen and GE Healthcare Life Sciences. The plasmids pBS-DHFR and pL1886 were kindly provided by Drs R. Tewari and B. Franke-Fayard respectively. The primers used are described in [S8 Table](#).

### Ethics statement

Mice were housed in an Animal Biosafety Level 2 facility at the Institut Pasteur de Lille and maintained in accordance with the French National Guidelines for Use of Animals for Scientific Purposes which is also in line with EU Directive 2010/63/EU. Experimental protocols performed in this study were reviewed and approved by the Comité d'Ethique C2EA-75 en Expérimentation Animale Nord-Pas de Calais-France (project number: 00527.04).

### Animals

Infections and antiserum production were performed in CD1 male mice (30g) (Charles River). BALB/c (10 weeks) and C57BL/6 (4-5weeks) male mice (Janvier Labs) were sorted randomly into groups of 5–6 animals and used for hyperparasitemia and ECM comparison between parental and  $\Delta$ gexp15 parasites. The duration of experiments was strictly limited and constant monitoring of infected mice was carried out. When parasitemia was about 60% accompanied with weight body loss, mice were euthanized by CO<sub>2</sub> inhalation. Mice susceptible to ECM

were euthanized by CO<sub>2</sub> inhalation if they displayed paralysis, convulsions/fits or coma. For the disruption of blood brain barrier, 100µl of 2% Evans blue dye in PBS were injected intravenously in C57BL/6 infected mice at day 6 p.i. Mice were then euthanized by CO<sub>2</sub> inhalation 1h post-injection and brains were recovered.

### Yeast two-hybrid assays

PbGEXP15<sub>4–590</sub>, PbGEXP15<sub>4–178</sub>, PbGEXP15<sub>446–596</sub> were amplified by PCR on *P. berghei* gDNA with primers p1-p2, p1-p3, p4-p5 respectively (S8 Table) and cloned into the pGADT7 vector (Clontech) using the In-Fusion HD Cloning system (Clontech) according to the manufacturer's instructions. Gal4-DBD-PfPP1c and PfPP1c F255A/F256A were previously cloned [12,23]. PbGEXP15<sub>4–178</sub> KKKKKAQA was obtained by PCR-based site directed mutagenesis with Isis DNA polymerase (MP Biomedicals) and pGADT7-PbGEXP15<sub>4–178</sub> as template and primers p6-p7. pGADT7 and pGBKT7 constructs were transformed into Y2H Gold and Y187 yeast strains (Clontech) respectively, and the yeasts were spread on Synthetic Defined agar medium lacking leucine (SD-L) or lacking tryptophane (SD-W) respectively and grown at 30°C for 3–5 days. Different mating experiments were performed and spread on selective media SD-LW. They were restreaked on more stringent media SD-LWH and SD-LWHA (L: Leucine, W: Tryptophan, H: Histidine, A: Adenine) after dilutions at 1:1, 1:25, 1:50. Diploids were incubated for 4–6 days at 30°C. Empty vectors pGADT7 or pGBKT7 and pGBKT7-Laminin were used as negative controls.

In order to check *Plasmodium* gene expression in yeast, RT-PCRs were performed. Total RNA was isolated from cultured yeasts (OD = 0.5) after flash freezing and using TRIzol Reagent (Thermo Fisher Scientific) with glass beads for 45 min at 65°C with occasional vortexing. RNA (5 µg) was treated with DNase I (Thermo Fisher Scientific) and DNA contamination was checked using an Agilent 2100 Bioanalyzer and by RT-PCR on intronic gene of yeast *tub1*. cDNA was synthesized using SuperScript III First-Strand Synthesis SuperMix (Thermo Fisher Scientific) according to the manufacturer's instructions. Amplification of transcripts was carried out by PCR using the Advantage 2 Polymerase Mix (Clontech) and the following primers (S8 Table): p13-p14 for TUB1, p11-p12 for Gal4-DBD-PfPP1c and Gal4-DBD-PfPP1c F255A F256A, p8-p9 for Gal4-AD-PbGEXP15<sub>4–590</sub>, Gal4-AD-PbGEXP15<sub>4–178</sub> and Gal4-AD-PbGEXP15<sub>4–178</sub> KKKKKAQA, and p8-p10 for Gal4-AD-PbGEXP15<sub>446–596</sub>.

### Recombinant protein expression and antiserum production

The coding regions of PbGEXP15<sub>4–590</sub> and PbGEXP15<sub>4–178</sub> were obtained by PCR with the primers p15-p16 and p15-p17 respectively (S8 Table) and cloned into pETDuet-1 (Novagen) using the In-Fusion HD Cloning system (Clontech). PbGEXP15<sub>4–178</sub> KKKKKAQA was obtained by PCR-based site directed mutagenesis with Isis DNA polymerase (MP Biomedicals), pET-Duet-1-PbGEXP15<sub>4–178</sub> as template and primers p6-p7.

GST, GST-PfPP1c and PfPP1c were produced as previously described [11,15]. All recombinant GEXP15 expressions were carried out in One Shot<sup>®</sup> BL21 Star<sup>™</sup> (DE3) Chemically Competent *E. coli* cells (Life Technologies) in the presence of 0.5 mM IPTG at 16°C overnight. Cells were harvested in non-denaturing buffer (20 mM Tris, 500 mM NaCl, 20 mM imidazole and protease inhibitor cocktail (Roche), pH 7.5) followed by sonication and ultracentrifugation. Pellets were resuspended and centrifuged in denaturing buffer (20 mM Tris, 500 mM NaCl, 6 M guanidine, 20 mM imidazole and protease inhibitor cocktail (Roche), pH 7.5). Ni<sup>2+</sup>-NTA agarose beads (Macherey Nagel) were used to purify the recombinant proteins as previously described [12]. SDS-polyacrylamide gels were blotted onto nitrocellulose and probed with anti-His antibody (1:2000 dilution) (Qiagen) followed by HRP-labeled anti-

mouse IgG (1:50000 dilution). Chemiluminescence detection with SuperSignal™ West Dura Extended Duration Substrate (Life Technologies) was carried out. Recombinant proteins were quantified with Pierce™ BCA Protein Assay Kit (Life Technologies).

The purified PbGEXP15<sub>4–178</sub> was used to produce antisera as previously described [12] in CD1 mice.

### GST pull-down assays

Glutathione-Sepharose beads (Sigma-Aldrich) coupled with GST-PfPP1c were incubated overnight at 4°C with 2 µg of PbGEXP15<sub>4–590</sub>, PbGEXP15<sub>4–178</sub> or PbGEXP15<sub>4–178</sub> KKKKKAQA in 20 mM Tris, 150 or 500 mM NaCl, 0.2 mM EDTA, 20 mM HEPES, 1 mM MnCl<sub>2</sub>, 1 mM DTT, 0.1% Triton X-100, 10% glycerol, protease inhibitor cocktail (Roche) and pH 7.5. After 5 washes of the beads with the same buffer, proteins bound to the beads were analyzed by 4–20% SDS-PAGE followed by immunoblotting with anti-His (1:2000) or anti-GST mAb (1:2000) (Invitrogen) as described above.

### Effect of GEXP15 on PfPP1 activity

The role of GEXP15 on the activity of PfPP1c was investigated using the p-nitrophenyl phosphate (pNPP) assay. Different amounts of PbGEXP15<sub>4–590</sub>, PbGEXP15<sub>4–178</sub> and PbGEXP15<sub>4–178</sub> KKKKKAQA were preincubated with 40 pmol of PfPP1c for 30 min at 37°C. The enzymatic reaction was initiated by the addition of pNPP substrate (Sigma-Aldrich) to the reaction medium and the absorbance was measured at 405 nm (Thermo Scientific Multiskan FC). The lack of phosphatase activity of recombinant GEXP15 alone was checked according to the described procedure in the absence of PP1. Two independent experiments were carried out in duplicate.

### Generation and analysis of *P. berghei* transgenic parasites

In order to tag PbPP1c with mCherry, *pbpp1c* was amplified with primers p18-p19 (1324 bp) (S8 Table). The insert was subcloned into pL1886 plasmid. The construct was linearized by Tth111I before transfection. The same plasmid was used for PbGEXP15-mCherry. The 3' region of *pbgexp15* was amplified with primers p22-p25 and p24-p23 (1332 bp) and a silent mutation was introduced by PCR-based mutagenesis in order to obtain a BsmI site, used to linearize the plasmid.

For the knock-out of *pbgexp15*, PCR amplifications were generated with the 5' and 3' UTR regions with primers p26-p27 (847 bp), p28-p29 (695 bp) and *P. berghei* gDNA as template. The inserts were subcloned into pBS-DHFR plasmid [71] and the construct was linearized by XbaI-ApaI before transfection.

Linearized pL1886 plasmids and pBS-DHFR plasmid were transfected by electroporation as previously described [72] in *P. berghei* ANKA GFP line [24] and pG230 line [36] respectively, kindly provided by Drs O. Silvie and N. Philip. Transfected parasites were inoculated in CD1 mice and positively selected by pyrimethamine in the drinking water, 30h after transfection [72].

Parasitized erythrocytes were lysed with Red blood cell Lysing buffer (Sigma-Aldrich) followed by the use of KAPA Express Extract kit (KAPA BioSystems) to extract DNA (manufacturer's instructions). Primers p20-p21 and p15-p21 were used to genotype *pbpp1c*-mCherry and *pbgexp15*-mCherry respectively (S8 Table). Deletion of *pbgexp15* was verified by diagnostic PCR using primers p30-p31 and p32-p33 and positive *pbgexp15* knock-out parasites were cloned via intraperitoneal injection in CD1 mice.

### Immunofluorescence assays

Blood from mice infected with PbPP1-mCherry or PbGEXP15-mCherry parasites was fixed with 4% paraformaldehyde and 0.0075% glutaraldehyde for 10 min at 4°C. After PBS washing, cells were sedimented on Poly-L-lysine coated coverslips overnight then permeabilized and saturated with PBS, 0.5% Triton X-100 and 1% BSA for 30min. Anti-RFP pAb (MBL, PM005) was diluted 1:500 in PBS BSA 1% and applied for 1h at 37°C. Coverslips were washed with PBS and incubated with Goat anti-Rabbit IgG (H+L) Cross-Adsorbed, Alexa Fluor 594 (Invitrogen, A11012) in PBS BSA 1% at 1:1000 in addition to DAPI (1µg/ml) for 1h at 37°C. The coverslips were mounted in Mowiol and confocal imaging was performed with an LSM880 microscope (Zeiss). Images were treated with ImageJ.

### Purification of schizonts and gametocytes in *P. berghei*

To obtain schizonts, blood from infected mice was incubated 20h at 37°C in RPMI1640 culture medium supplemented with 0.4% AlbuMAX™ II Lipid-Rich BSA (Life technologies), then schizonts were purified on a 55% Nycodenz gradient. Gametocytes purification was performed as previously described [73]. Briefly, CD1 mice were treated with phenylhydrazine by the intraperitoneal route (200µl, 6mg/ml, Sigma-Aldrich) 2 days pre-infection then treated with sulfadiazine (20mg/ml in drinking water, Sigma-Aldrich) 3 days post-infection. At day 5 post-infection, blood was collected by cardiac puncture and gametocytes purified on a 48% Nycodenz column in coelenterazine buffer. Purifications were higher than 95% for schizonts and gametocytes.

### Immunoprecipitation and mass-spectrometry

Purified schizonts or gametocytes of PbPP1-HA, PbPP1-mCherry, PbGEXP15-mCherry and parental wild-type parasites used as control, were suspended in 50 mM Tris, 0.5% Triton X-100 and protease inhibitor cocktail (Roche), pH 8. After 10 freeze-thaw cycles and sonication, soluble fractions were obtained after repeated centrifugations at 13000 rpm at 4°C. Anti-HA agarose beads (Life Technologies) or RFP-Trap<sup>®</sup>\_A beads (Chromotek) were mixed overnight at 4°C with parasite soluble extracts in 20 mM Tris, 150 mM NaCl, 0.5% Triton X-100 and protease inhibitor cocktail (Roche), pH 7.5. Beads were washed and elution was performed in Laemmli buffer. Then after 3 min at 95°C, samples were loaded on a 4–20% SDS-PAGE for western blot or mass spectrometry analyses. Western blots were carried out as described above and probed with anti-RFP pAb (1:1000, MBL) followed by goat anti-rabbit IgG-HRP (1:20000, Sigma-Aldrich). Then, the membrane was stripped and probed with mouse sera anti-GEXP15 (1:100) followed by Mouse TrueBlot<sup>®</sup> Ultra: Anti-Mouse Ig HRP (1:2000, eBioscience). For the Mass-spectrometry analysis, electrophoretic migration, tryptic digestion and nanoLC-MSMS analysis were performed as previously described [74]. Raw data collected during nanoLC-MS/MS analyses were processed and converted into \*.mgf peak list format with Proteome Discoverer 1.4 (Thermo Fisher Scientific). MS/MS data were interpreted using the search engine Mascot (version 2.4.0, Matrix Science, London, UK) installed on a local server. Searches were performed with a tolerance on mass measurement of 0.2 Da for precursor and 0.2 Da for fragment ions, against a composite target decoy database (2\*22,202 total entries) built with *Mus musculus* Uniprot database (10090–17,008 entries), *Plasmodium berghei* PlasmoDB database (Release 41.0–5 December 2018–5,076 entries) fused with the sequences of PbPP1-HA or PbGEXP15-mCherry, recombinant trypsin and a list of classical contaminants (118 entries). Cysteine carbamidomethylation, methionine oxidation, protein N-terminal acetylation, and cysteine propionamidation were searched as variable modifications. Up to one trypsin missed cleavage was allowed. For each sample, peptides were filtered

out according to the cut-off set for proteins hits with one or more peptides longer than nine residues. Ion and identity score were fixed to obtain a 1% false positive rate.

### Asexual and sexual development assays

In order to evaluate the number of merozoites per schizont, purified schizonts from *P. berghei* cultures were fixed in 4% paraformaldehyde and 0.0075% glutaraldehyde for 10 min at 4°C then incubated 30 min with DAPI. The nuclei were counted with Leica Leitz DMRB fluorescence microscope. To measure growth rate, purified mature schizonts were intravenously injected in CD1 mice. Smears were performed at 1h, 22h, 25h and 29h post-infection and rings, trophozoites and schizonts were counted under the microscope after Giemsa staining.

For sexual development, the gametocytemia was determined by microscopy. Exflagellation was assessed after 10–12 min of incubation at 21°C in RPMI 1640 with 25 mM HEPES and 10% fetal calf serum, pH 8 [75]. The exflagellation centers were counted under slide-coverslip by microscopy using a 40x objective.

### Mosquito transmission

*Anopheles stephensi* mosquitoes were maintained at the insectarium of the Institut Pasteur de Lille. They are reared at 19°C and 75–80% humidity under 12/12 hour light/dark cycle. Female mosquitoes (4 to 6 days) were fed on anaesthetized infected CD1 mice once gametocytes had been observed. The presence of oocysts in the midgut was checked at day 9 post blood meal and dissection of salivary glands was assessed at day 18. Fifteen salivary glands were pooled and homogenized per technical replicate. Sporozoite counts were determined with a Kova slide. The experiments were performed twice independently.

### Sample preparation and mass spectrometry

*P. berghei* schizonts or gametocytes were purified as described above and treated with 0.15% saponin to avoid host contamination. Soluble proteins were extracted in RIPA buffer (Thermo Fisher Scientific), Halt™ Protease and Phosphatase Inhibitor Cocktail (Thermo Fisher Scientific) and DNase I (Thermo Fisher Scientific). Proteins were quantified with the Pierce™ BCA Protein Assay Kit (Life Technologies). 82 µg of proteins for the schizonts and 100 µg of proteins for the gametocytes were first reduced with 0.1 M DTT final concentration at 60°C for 1h. MS sample preparation was performed using a FASP method (filter aided sample preparation) according to Lipecka *et al* [76]. We set aside around 10 µg of the digested proteins for the analysis of total proteomes, while the remaining samples were used for phosphopeptide enrichments. The expression of PbGSK3 was examined by western blot on purified gametocyte extracts and probed with anti-PfGSK3 (1:1000 dilution, Covalab, pab0250) and anti-Actin1 (1:2000 dilution) followed by HRP-labeled anti-rabbit (1:20000 dilution) and HRP-labeled anti-mouse (1:20000 dilution) respectively. Relative quantification of PbGSK3 in parental and Δgexp15 gametocytes was normalized using PbActin-1.

### Phosphopeptide enrichment by titanium dioxide (TiO<sub>2</sub>)

Phosphopeptide enrichments were carried out using Titansphere TiO<sub>2</sub> Spin tips (3 mg/200 µL, Titansphere PHOS-TiO, GL Sciences Inc) on the digested proteins for each biological replicate. Briefly, the TiO<sub>2</sub> Spin tips were conditioned with 20 µL of solution A (80% acetonitrile, 0,4% TFA), centrifuged at 3,000 g for 2 min and equilibrated with 20 µL of solution B (75% acetonitrile, 0,3% TFA, 25% lactic acid) followed by centrifugation at 3,000 g for 2 min. Peptides were dissolved in 20 µL of solution A, mixed with 100 µL of solution B and centrifuged at

1,000 g for 10 min. Sample was applied back to the TiO<sub>2</sub> Spin tips twice more in order to increase the adsorption of the phosphopeptides to the TiO<sub>2</sub>. Spin tips were washed sequentially with 20 μL of solution B and twice with 20 μL of solution A. Phosphopeptides were eluted by the sequential addition of 50 μL of 5% NH<sub>4</sub>OH and 50 μL of 5% pyrrolidine. Centrifugation was carried out at 1,000 g for 5 min. Phosphopeptides were purified using GC Spin tips (GL-Tip, Titansphere, GL Sciences Inc). Briefly, the GC Spin tips were conditioned according to manufacturer's instructions, then eluted phosphopeptides from the TiO<sub>2</sub> Spin tips were added to the GC Spin tips and centrifuged at 1,000 g for 5 min. GC Spin tips were washed with 20 μL of 0.1% TFA in HPLC-grade water. Phosphopeptides were eluted with 70 μL of 80% acetonitrile, 0.1% TFA (1,000 g for 5 min) and vacuum dried.

### nanoLC-MS/MS protein identification and quantification

Peptides for the analysis of total proteomes were resuspended in 0.1% TFA in HPLC-grade water, 10% acetonitrile and 500 ng of each sample was injected in a nanoRSLC-Q Exactive PLUS (RSLC Ultimate 3000, Thermo Scientific). Phosphopeptides were resuspended in 42 μL of 0.1% TFA in HPLC-grade water and 5 μL of each sample was injected into the mass spectrometer. Samples were loaded onto a μ-precolumn (Acclaim PepMap 100 C18, cartridge, 300 μm i.d.×5 mm, 5 μm, Thermo Scientific), and were separated on a 50 cm reversed-phase liquid chromatographic column (0.075 mm ID, Acclaim PepMap 100, C18, 2 μm, Thermo Scientific). Chromatography solvents were (A) 0.1% formic acid in water, and (B) 80% acetonitrile, 0.08% formic acid. Samples were eluted from the column with the following gradient: 5% to 40% B (120 min), 40% to 80% (6 min). At 127 min, the gradient returned to 5% to re-equilibrate the column for 20 min before the next injection. One blank was run between biological replicates to prevent sample carryover. Samples eluting from the column were analyzed by data dependent MS/MS, using the top-10 acquisition method. Peptides and phosphopeptides were fragmented using higher-energy collisional dissociation (HCD). Briefly, the instrument settings were as follows: resolution was set to 70,000 for MS scans and 17,500 for the data dependent MS/MS scans in order to increase speed. The MS AGC target was set to 3.10<sup>6</sup> counts with maximum injection time set to 200 ms, while MS/MS AGC target was set to 1.10<sup>5</sup> with maximum injection time set to 120 ms. The MS scan range was from 400 to 2000 m/z. Dynamic exclusion was set to 30 sec duration.

The MS files were processed with the MaxQuant software version 1.5.8.3 and searched with Andromeda search engine against the database of *Mus musculus* from swissprot 07/2017 and *Plasmodium berghei* ANKA from PlasmoDB (v37) [20]. To search parent mass and fragment ions, we set a mass deviation of 4.5 ppm and 20 ppm respectively. Strict specificity for trypsin/P cleavage was required, allowing up to two missed cleavage sites. Carbamidomethylation (Cys) was set as a fixed modification, whereas oxidation (Met) and N-term acetylation were set as variable modifications. For the analysis of MS files issuing from of TiO<sub>2</sub> enrichment, the variable modification of phosphorylation on S, T and Y were also added. The false discovery rates (FDRs) at the protein and peptide level were set to 1%. Scores were calculated in MaxQuant as described previously [77]. Match between runs was allowed. The reverse hits were removed from MaxQuant output. Proteins were quantified according to the MaxQuant label-free algorithm [77,78] using LFQ intensities and phosphopeptides according to intensity. Protein quantification was obtained using at least 2 peptides per protein.

Statistical and bioinformatic analysis, including volcano plots and clustering, were performed with Perseus software (version 1.6.0.7) freely available at Perseus [79]. For statistical comparison we set two groups: *P. berghei* parental and Δgexp15. Each group contained four

and three biological replicates for schizonts and gametocytes respectively and each sample was run in technical triplicates.

For the total proteomes, we analyzed the proteingroups.txt file and the Phospho(STY).txt file for the phosphoproteomes. Protein LFQ and phosphopeptides intensities were transformed in  $\log_2$  and the site table was expanded to analyze all phosphosites separately. Proteins derived from mouse were filtered out from the analysis and the *P. berghei* protein and phosphosite distributions were normalized using width adjustment. We further filtered the data to keep only proteins with at least 4 valid values in the parental and/or the  $\Delta$ gexp15 schizonts and 3 valid values for gametocytes. Data were imputed to fill missing data points by creating a Gaussian distribution of random numbers with a standard deviation of 33% relative to the standard deviation of the measured values and 2.5 standard deviation downshift of the mean to simulate the distribution of low signal values. We performed a t-test,  $FDR < 0.05$  (250 randomizations),  $S_0 = 0.1$  for the proteomes and  $FDR < 0.01$  (250 randomizations),  $S_0 = 0.1$  for the phosphoproteomes. Hierarchical clustering of proteins and phosphosites that survived the tests was performed with Heatmapper [80] on logarithmized LFQ intensities after z-score normalization of the data, using Pearson distances.

The fold enrichments were based on GO annotations and their significance has been calculated by using hypergeometric probability test provided by Graeber lab: <http://systems.crump.ucla.edu/hypergeometric/index.php>

## Statistical analysis

An unpaired two-tailed non-parametric Mann–Whitney *U* test was used for the pNPP tests, comparison of the number of merozoites per schizont, gametocytes, exflagellation centers, oocysts and sporozoites. Parasitemia and survival curves were analyzed using a Wilcoxon and a log-rank (Mantel-Cox) test respectively. For growth rate, a two-way ANOVA followed by Tukey post hoc test was performed. Functional enrichments were analyzed by hypergeometric test. The criterion for a significant difference: \* for  $p < 0.05$ ; \*\* for  $p < 0.01$ , \*\*\* for  $p < 0.001$  and \*\*\*\* for  $p < 0.0001$ . Our statistical analyses were detailed in the figure legends of each experiment. Statistical analyses were performed in GraphPad Prism 6. For the statistical analysis of the proteomes and phosphoproteomes, the details are mentioned above.

## Supporting information

**S1 Fig. Alignment of GEXP15 and schemes of the different regions and motifs studied.** (A) Alignment between the amino acid sequences of PfGEXP15 and PbGEXP15 (BioEdit and ClustalW). (B) Schema of PfGEXP15 and PbGEXP15. The positions of the two putative RVxF motifs are shown on GEXP15 from both species and their positions are conserved. The dark grey region depicted in PfGEXP15 (8–182) corresponds to the fragment identified by the yeast two-hybrid screening of PfPP1c, and the homologous region is delineated in PbGEXP15 (4–178). The second region of PbGEXP15 (446–596, in light grey) was used in yeast two-hybrid system. (TIF)

**S2 Fig. Interaction of GEXP15 with PP1 in yeast.** Yeast diploids were checked on SD-LW plates (panels a) and interactions were identified by growth of undiluted and diluted (1:25 and 1:50) cultures on SD-LWH (panels b) and SD-LWHA (panels c). (A) pGADT7-PbGEXP15<sub>4–590</sub> was mated with pGBKT7-PfPP1c (lane 1), with pGBKT7-Laminin (lane 2) and with pGBKT7 (lane 3). The mating of yeasts transformed with pGADT7 and pGBKT7-PfPP1c was used as a negative control (lane 4). (B) pGADT7-PbGEXP15<sub>4–178</sub> was mated in the same manner as



above (lanes 1, 2 and 3). Lanes 4 and 5 represent the mating of pGBKT7-PfPPP1c with pGADT7-PbGEXP15<sub>446-596</sub> and pGADT7-PbGEXP15<sub>4-178</sub> KKKKKAQA respectively. (C) pGADT7-PbGEXP15<sub>4-590</sub> (lane 1), pGADT7-PbGEXP15<sub>4-178</sub> (lane 2), pGADT7-PbGEXP15<sub>446-596</sub> (lane 3) and pGADT7-PbGEXP15<sub>4-178</sub> KKKKKAQA (lane 4) were mated with pGBKT7-PfPPP1c F255A F256A (annotated PfPPP1c FF). The mating of yeasts transformed with pGADT7 and PGBKT7-PfPPP1c F255A F256A was used as a control (lane 5). (D) Diagnostic RT-PCR of the different exogenous PfPPP1c and PbGEXP15 in yeast. The amplification of the intronic gene *tub1*, on yeast genomic DNA, was used as control (lane 1). cDNAs were obtained after reverse transcription of total RNA from yeasts transfected with pGBKT7-PfPPP1c (lanes 2, 3), PGBKT7-PfPPP1c F255A F256A (lanes 4, 5), pGADT7-PbGEXP15<sub>4-590</sub> (lanes 6, 7), pGADT7-PbGEXP15<sub>4-178</sub> (lanes 8, 9), pGADT7-PbGEXP15<sub>4-178</sub> KKKKKAQA (lanes 10, 11) and pGADT7-PbGEXP15<sub>446-596</sub> (lanes 12, 13). RT-PCRs were performed using primers p13-p14 for TUB1 (lanes 1, 2, 4, 6, 8, 10, 12), p11-p12 for PfPPP1c and PfPPP1c F255A F256A (lanes 3, 5), p8-p9 for PbGEXP15<sub>4-590</sub>, PbGEXP15<sub>4-178</sub> and PbGEXP15<sub>4-178</sub> KKKKKAQA (lanes 7, 9, 11) and p8-p10 for PbGEXP15<sub>446-596</sub> (lane 13). Schematic representations indicate positions of the different primers.

(TIF)

**S3 Fig. Strategy and genotyping of PbPPP1c-mCherry and PbGEXP15-mCherry.** Schematic representations of the mCherry tag integration strategy by single homologous recombination into endogenous *pbpp1c* (A) or *pbgexp15* (B) locus and genotype analyses. The selectable marker (TgDHFR), the mCherry tag, the PCR primers and the positions of the restriction site (white dots) used to linearize the constructs are indicated. PCRs were performed on parental and transfected genomic DNA using the indicated primer combinations. Immunoblot detection of PbPPP1-mCherry (C) and PbGEXP15-mCherry (D) in parental (lanes 1) and transfected *P. berghei* parasites (lanes 2), probed with anti-mCherry. (E) Immunoblot detection of wild PbGEXP15 in *P. berghei* parasites with anti-GEXP15 antisera (lane 1) and pre-immune sera (lane 2). Of note, heavy-chain antibodies were detected in both conditions.

(TIF)

**S4 Fig. Strategy and analyses of the PbGEXP15 knock-out.** (A) Schematic representation of the knock-out strategy by double homologous recombination of the endogenous *pbgexp15* locus and genotyping PCRs. The selectable marker (TgDHFR) and the PCR primers are indicated. The presence of the endogenous locus of PbGEXP15 was demonstrated by PCR using primers p15-p17 on parental,  $\Delta$ *gexp15cl1* and  $\Delta$ *gexp15cl2* genomic DNA (lanes 1, 4, 7 respectively). Integrations at the 5' and 3' ends were verified for parental (lanes 2, 3),  $\Delta$ *gexp15cl1* (lanes 5, 6) and  $\Delta$ *gexp15cl2* (lanes 8, 9) with primers p30-p31 and p32-p33 respectively. (B) Western blot analysis of PbGEXP15 expression in parental (lanes 1 and 4),  $\Delta$ *gexp15cl1* (lanes 2 and 5) and  $\Delta$ *gexp15cl2* parasites (lanes 3 and 6). Immunoblot (IB) was probed with anti-GEXP15 antisera (lanes 1, 2 and 3) or pre-immune sera (lanes 4, 5 and 6). Anti-Actin1 was used as a loading control. (C) Representative photographs of infected C57BL/6 mice brains. Analysis of the breakdown of blood brain barrier of mouse infected by parental or  $\Delta$ *gexp15cl1* parasites was carried out using Evans blue (day 6 p.i).

(TIF)

**S5 Fig. Supplemental analyses of proteomes and phosphoproteomes in parental and  $\Delta$ *gexp15* schizont and gametocyte stages.** (A) Venn diagram showing the overlaps between the IP/MS of PbPPP1, PfPPP1 interactome, and the proteome and phosphoproteome in  $\Delta$ *gexp15* schizonts. (B) Representative western blot analysis of PbGSK3 expression in parental (lanes 1) and  $\Delta$ *gexp15* gametocytes (lanes 2). Immunoblot was probed with anti-GSK3 (left panel) and

anti-Actin1 (right panel). (C) Relative expression of PbGSK3 to PbActin-1 was normalized in parental gametocytes. Data are presented as mean  $\pm$  SD of two independent experiments. (TIF)

**S1 Table. Identified proteins after PbGEXP15-mCherry immunoprecipitation in *P. berghei* schizonts.** The table shows the protein name, accession number and molecular weight of identified proteins and the number of peptides and spectra identified for each experiment are indicated. Three experiments were performed with mCherry antibodies on WT schizonts as negative control and PbGEXP15-mCherry schizonts. Here, we present the protein co-immunoprecipitated with PbGEXP15-mCherry in at least two experiments with peptides  $\geq$  2 and with peptides and spectra  $\geq$  2 fold compared with the control strain. Blank cells represent 0 peptide/spectrum identified. Percentage of sequence coverage, peptide sequence, number of shared peptides and other proteins are indicated in reduced columns. In the second sheet, all proteins immunoprecipitated are shown. (XLSX)

**S2 Table. Identified proteins after PbGEXP15-mCherry immunoprecipitation in *P. berghei* gametocytes.** The table shows the protein name, accession number and molecular weight of identified proteins and the number of peptides and spectra identified for each experiment are indicated. Two experiments were performed with mCherry antibodies on WT gametocytes as negative control and PbGEXP15-mCherry gametocytes. Here, we present the protein co-immunoprecipitated with PbGEXP15-mCherry in two experiments with peptides  $\geq$  2 and with peptides and spectra  $\geq$  2 fold compared with the control strain. Blank cells represent 0 peptide/spectrum identified. Percentage of sequence coverage, peptide sequence, number of shared peptides and other proteins are indicated in reduced columns. In the second sheet, all proteins immunoprecipitated are shown. (XLS)

**S3 Table. Identified proteins after PbPP1-HA immunoprecipitation in *P. berghei* schizonts.** The table shows the protein name, accession number and molecular weight of identified proteins and the number of peptides and spectra identified for each experiment are indicated. Three experiments were performed with HA antibodies on WT schizonts as negative control and PbPP1-HA schizonts. Here, we present the protein co-immunoprecipitated with PbPP1-HA in at least two experiments with peptides  $\geq$  2 and with peptides and spectra  $\geq$  2 fold compared with the control strain. Blank cells represent 0 peptide/spectrum identified. Percentage of sequence coverage, peptide sequence, number of shared peptides and other proteins are indicated in reduced columns. In the second sheet, all proteins immunoprecipitated are shown. (XLSX)

**S4 Table. Table of proteins of *P. berghei* parental and  $\Delta$ gexp15 schizonts.** This table reports the proteins quantified in parental and  $\Delta$ gexp15 schizonts. The values reported under parental 1–4 and  $\Delta$ gexp15 1–4 correspond to logarithmic label-free intensity (LFQ), "MS/MS counts" is the total number of assigned fragmented spectra, "peptides" is the number of peptides associated with each protein group. Student's T-test significant indicates the proteins that survived the test after multiple testing using FDR<0.05. The fold change is indicated and a color gradient from green to red represents the proteins under and over-abundant respectively in  $\Delta$ gexp15 schizonts. We report the p and q value of the T test between parental and  $\Delta$ gexp15, as well as the differences of the intensities. We report biological process associated to each protein when known based on manual and COG annotation. For proteins with a significant differential abundance in parental and  $\Delta$ gexp15 schizonts (FDR<0.05), *P. falciparum* orthologs are

added when known (/ indicates no ortholog). <sup>a</sup> Proteins described to be partners of the PP1 network in *P. falciparum* [17] and in *P. berghei* (this study) are indicated by X. (XLSX)

**S5 Table. Phosphosites identified in the *P. berghei* parental and  $\Delta$ gexp15 schizonts.** This table reports the phosphosites quantified in parental and  $\Delta$ gexp15 schizonts. For each phosphosite we report the normalised log<sub>2</sub> of the intensity values. The T test was performed between the parental and  $\Delta$ gexp15 schizonts. P-value, q value and difference of the average of the intensities are reported. Student's T-test significant indicates the 166 phosphosites that survived the test after multiple testing using FDR<0.01. The fold change is indicated and a color gradient from green to red represents the phosphopeptides hypo- and hyperphosphorylated respectively in  $\Delta$ gexp15 schizonts. Amino Acid indicates if the phosphorylation occurs on S, T or Y, the position indicates the amino acid position in the protein. Multiplicity is the number of phosphorylation identified simultaneously on that peptide. Localization probability is the probability of correct phosphosite attribution (1 indicates 100%). Positions within the proteins indicate all the phosphorylation sites identified on the protein. Sequence window contains the sequence of the 15 amino acid before and after in the phosphosite. We report biological process associated to each protein when known based on manual and COG annotation. For the phosphosites with a significant differential in parental and  $\Delta$ gexp15 schizonts (FDR<0.01), *P. falciparum* orthologs are added when known (/ indicates no ortholog). <sup>a</sup> Proteins previously described to be partners or potential member of the PP1 network in *P. falciparum* [17] and in *P. berghei* (this study) are indicated by X. <sup>b</sup> Phosphoproteins identified in published *P. berghei* phosphoproteome studies [81,82] are reported (X: previously identified; / indicates no ortholog). <sup>c</sup> Phosphoproteins identified in published *P. falciparum* phosphoproteome studies [83–85] are reported (X: previously identified; / indicates no ortholog). (XLSX)

**S6 Table. Table of proteins of *P. berghei* parental and  $\Delta$ gexp15 gametocytes.** This table reports the proteins quantified in parental and  $\Delta$ gexp15 gametocytes. The values reported under parental 1–3 and  $\Delta$ gexp15 1–3 correspond to logarithmic labelfree intensity (LFQ), "MS/MS counts" is the total number of assigned fragmented spectra, "peptides" is the number of peptides associated with each protein group. Student's T-test significant indicates the proteins that survived the test after multiple testing using FDR<0.05. The fold change is indicated and a color gradient from green to red represents the proteins under and over-abundant respectively in  $\Delta$ gexp15 gametocytes. We report the p and q value of the T test between parental and  $\Delta$ gexp15, as well as the differences of the intensities. We report biological process associated to each protein when known based on manual and COG annotation. For proteins with a significant differential abundance in parental and  $\Delta$ gexp15 gametocytes (FDR<0.05), *P. falciparum* orthologs are added when known. <sup>a</sup> Sex is indicated when the proteins are enriched in male and female gametocyte transcriptomes or proteomes in *P. berghei* [41] and *P. falciparum* [40,42] studies. (XLSX)

**S7 Table. Phosphosites identified in the *P. berghei* parental and  $\Delta$ gexp15 gametocytes.** This table reports the phosphosites quantified in parental and  $\Delta$ gexp15 gametocytes. For each phosphosite we report the normalised log<sub>2</sub> of the intensity values. The T test was performed between the parental and  $\Delta$ gexp15 gametocytes. P-value, q value and difference of the average of the intensities are reported. Student's T-test significant indicates the 9 phosphosites that survived the test after multiple testing using FDR<0.01. The fold change is indicated and a color gradient from green to red represents the phosphopeptides hypo- and hyperphosphorylated

respectively in  $\Delta$ gexp15 gametocytes. Amino Acid indicates if the phosphorylation occurs on S, T or Y, the position indicates the amino acid position in the protein. Multiplicity is the number of phosphorylation identified simultaneously on that peptide. Localization probability is the probability of correct phosphosite attribution (1 indicates 100%). Positions within the proteins indicate all the phosphorylation sites identified on the protein. Sequence window contains the sequence of the 15 amino acid before and after in the phosphosite. We report biological process associated to each protein when known based on manual and COG annotation. For the phosphosites with a significant differential in parental and  $\Delta$ gexp15 gametocytes (FDR<0.01), *P. falciparum* orthologs are added when known (/ indicates no ortholog). <sup>a</sup> Phosphoproteins identified in published *P. berghei* phosphoproteome studies [81,82] are reported (X: previously identified; / indicates no ortholog). <sup>b</sup> Phosphoproteins identified in published *P. falciparum* phosphoproteome studies [83–85] are reported (X: previously identified; / indicates no ortholog). <sup>c</sup> Sex is indicated when the proteins are enriched in male and female gametocyte transcriptomes or proteomes in *P. berghei* [41] and *P. falciparum* [40,42] studies. (XLSX)

**S8 Table. List of primers used in this study.**

(XLSX)

## Acknowledgments

The authors thank Sophia Lafitte and Ludovic Huot for their help and technical assistance and Dr Sylviane Pied for the access to the insectarium of Institut Pasteur de Lille. We thank Dr Raymond J Pierce for critical reading of the manuscript.

## Author Contributions

**Conceptualization:** Jamal Khalife.

**Data curation:** Thomas Hollin, Caroline De Witte, Ida Chiara Guerrero, Jean-Michel Saliou, Jamal Khalife.

**Formal analysis:** Thomas Hollin, Caroline De Witte, Ida Chiara Guerrero, Jamal Khalife.

**Funding acquisition:** Jamal Khalife.

**Investigation:** Thomas Hollin, Caroline De Witte, Aline Fréville, Ida Chiara Guerrero, Cerina Chhuon, Jean-Michel Saliou, Fabien Herbert, Christine Pierrot, Jamal Khalife.

**Methodology:** Thomas Hollin, Caroline De Witte, Aline Fréville, Ida Chiara Guerrero, Jean-Michel Saliou, Jamal Khalife.

**Resources:** Jean-Michel Saliou, Fabien Herbert, Jamal Khalife.

**Supervision:** Jamal Khalife.

**Validation:** Thomas Hollin, Caroline De Witte, Aline Fréville, Ida Chiara Guerrero, Cerina Chhuon, Fabien Herbert, Christine Pierrot.

**Visualization:** Thomas Hollin, Caroline De Witte, Ida Chiara Guerrero, Jamal Khalife.

**Writing – original draft:** Thomas Hollin, Ida Chiara Guerrero, Jamal Khalife.

**Writing – review & editing:** Thomas Hollin, Caroline De Witte, Aline Fréville, Ida Chiara Guerrero, Cerina Chhuon, Jean-Michel Saliou, Fabien Herbert, Christine Pierrot, Jamal Khalife.

## References

1. Doerig C, Rayner JC, Scherf A, Tobin AB. Post-translational protein modifications in malaria parasites. *Nat Rev Microbiol*. 2015; 13: 160–172. <https://doi.org/10.1038/nrmicro3402> PMID: 25659318
2. Guttery DS, Poulin B, Ramaprasad A, Wall RJ, Ferguson DJP, Brady D, et al. Genome-wide functional analysis of Plasmodium protein phosphatases reveals key regulators of parasite development and differentiation. *Cell Host Microbe*. 2014; 16: 128–40. <https://doi.org/10.1016/j.chom.2014.05.020> PMID: 25011111
3. Yokoyama D, Saito-Ito A, Asao N, Tanabe K, Yamamoto M, Matsumura T. Modulation of the growth of Plasmodium falciparum in vitro by protein serine/threonine phosphatase inhibitors. *Biochem Biophys Res Commun*. 1998; 247: 18–23. <https://doi.org/10.1006/bbrc.1998.8730> PMID: 9636646
4. Ferreira M, Boens S, Winkler C, Szekér K, Verbinnen I, Van Eynde A, et al. The protein phosphatase 1 regulator NIPP1 is essential for mammalian spermatogenesis. *Sci Rep*. 2017; 7: 13364. <https://doi.org/10.1038/s41598-017-13809-y> PMID: 29042623
5. Wang W, Cronmiller C, Brautigan DL. Maternal Phosphatase Inhibitor-2 Is Required for Proper Chromosome Segregation and Mitotic Synchrony During Drosophila Embryogenesis. *Genetics*. 2008; 179: 1823–1833. <https://doi.org/10.1534/genetics.108.091959> PMID: 18689877
6. Pedelini L, Marquina M, Ariño J, Casamayor A, Sanz L, Bollen M, et al. YP1 and SDS22 proteins regulate the nuclear localization and function of yeast type 1 phosphatase Glc7. *J Biol Chem*. 2007; 282: 3282–92. <https://doi.org/10.1074/jbc.M607171200> PMID: 17142459
7. Fisher LA, Wang L, Wu L, Peng A. Phosphatase 1 nuclear targeting subunit is an essential regulator of M-phase entry, maintenance, and exit. *J Biol Chem*. 2014; 289: 23745–52. <https://doi.org/10.1074/jbc.M114.572149> PMID: 25002584
8. Heroes E, Lesage B, Görnemann J, Beullens M, Van Meervelt L, Bollen M. The PP1 binding code: a molecular-lego strategy that governs specificity. *FEBS J*. 2013; 280: 584–95. <https://doi.org/10.1111/j.1742-4658.2012.08547.x> PMID: 22360570
9. Korrodi-Gregório L, Esteves SLC, Fardilha M. Protein phosphatase 1 catalytic isoforms: specificity toward interacting proteins. *Transl Res*. 2014; 164: 366–91. <https://doi.org/10.1016/j.trsl.2014.07.001> PMID: 25090308
10. Daher W, Browaeys E, Pierrot C, Jouin H, Dive D, Meurice E, et al. Regulation of protein phosphatase type 1 and cell cycle progression by PflRR1, a novel leucine-rich repeat protein of the human malaria parasite Plasmodium falciparum. *Mol Microbiol*. 2006; 60: 578–90. <https://doi.org/10.1111/j.1365-2958.2006.05119.x> PMID: 16629662
11. Fréville A, Landrieu I, García-Gimeno MA, Vicogne J, Montbarbon M, Bertin B, et al. Plasmodium falciparum inhibitor-3 homolog increases protein phosphatase type 1 activity and is essential for parasitic survival. *J Biol Chem*. 2012; 287: 1306–21. <https://doi.org/10.1074/jbc.M111.276865> PMID: 22128182
12. Fréville A, Cailliau-Maggio K, Pierrot C, Tellier G, Kalamou H, Lafitte S, et al. Plasmodium falciparum encodes a conserved active inhibitor-2 for Protein Phosphatase type 1: perspectives for novel anti-plasmodial therapy. *BMC Biol*. 2013; 11: 80. <https://doi.org/10.1186/1741-7007-11-80> PMID: 23837822
13. Fréville A, Tellier G, Vandomme A, Pierrot C, Vicogne J, Cantrelle F-X, et al. Identification of a Plasmodium falciparum inhibitor-2 motif involved in the binding and regulation activity of protein phosphatase type 1. *FEBS J*. 2014; 281: 4519–34. <https://doi.org/10.1111/febs.12960> PMID: 25132288
14. Pierrot C, Zhang X, Zanghi G, Fréville A, Rebollo A, Khalife J. Peptides derived from Plasmodium falciparum leucine-rich repeat 1 bind to serine/threonine phosphatase type 1 and inhibit parasite growth in vitro. *Drug Des Devel Ther*. 2018; 12: 85–88. <https://doi.org/10.2147/DDDT.S153095> PMID: 29386885
15. Tellier G, Lenne A, Cailliau-Maggio K, Cabezas-Cruz A, Valdés JJ, Martoriati A, et al. Identification of Plasmodium falciparum Translation Initiation eIF2 $\beta$  Subunit: Direct Interaction with Protein Phosphatase Type 1. *Front Microbiol*. 2016; 7: 777. <https://doi.org/10.3389/fmicb.2016.00777> PMID: 27303372
16. Florens L, Washburn MP, Raine JD, Anthony RM, Grainger M, Haynes JD, et al. A proteomic view of the Plasmodium falciparum life cycle. *Nature*. 2002; 419: 520–526. <https://doi.org/10.1038/nature01107> PMID: 12368866
17. Hollin T, De Witte C, Lenne A, Pierrot C, Khalife J. Analysis of the interactome of the Ser/Thr Protein Phosphatase type 1 in Plasmodium falciparum. *BMC Genomics*. 2016; 17: 246. <https://doi.org/10.1186/s12864-016-2571-z> PMID: 26988354
18. Meiselbach H, Sticht H, Enz R. Structural analysis of the protein phosphatase 1 docking motif: molecular description of binding specificities identifies interacting proteins. *Chem Biol*. 2006; 13: 49–59. <https://doi.org/10.1016/j.chembiol.2005.10.009> PMID: 16426971
19. Silvestrini F, Lasonder E, Olivieri A, Camarda G, van Schaijk B, Sanchez M, et al. Protein export marks the early phase of gametocytogenesis of the human malaria parasite Plasmodium falciparum. *Mol Cell Proteomics*. 2010; 9: 1437–48. <https://doi.org/10.1074/mcp.M900479-MCP200> PMID: 20332084

20. PlasmoDB: The Plasmodium Genomics Resource [Internet]. [cited 4 Apr 2019]. <https://plasmodb.org/plasmo/>
21. Hurley TD, Yang J, Zhang L, Goodwin KD, Zou Q, Cortese M, et al. Structural basis for regulation of protein phosphatase 1 by inhibitor-2. *J Biol Chem*. 2007; 282: 28874–83. <https://doi.org/10.1074/jbc.M703472200> PMID: 17636256
22. Wu X, Tatchell K. Mutations in Yeast Protein Phosphatase Type 1 that Affect Targeting Subunit Binding †. *Biochemistry*. 2001; 40: 7410–7420. <https://doi.org/10.1021/bi002796k> PMID: 11412094
23. Lenne A, De Witte C, Tellier G, Hollin T, Aliouat EM, Martoriati A, et al. Characterization of a Protein Phosphatase Type-1 and a Kinase Anchoring Protein in Plasmodium falciparum. *Front Microbiol*. 2018; 9: 2617. <https://doi.org/10.3389/fmicb.2018.02617> PMID: 30429842
24. Manzoni G, Briquet S, Risco-Castillo V, Gaultier C, Topçu S, Ivănescu ML, et al. A rapid and robust selection procedure for generating drug-selectable marker-free recombinant malaria parasites. *Sci Rep*. Nature Publishing Group; 2015; 4: 4760. <https://doi.org/10.1038/srep04760> PMID: 24755823
25. Oehring SC, Woodcroft BJ, Moes S, Wetzel J, Dietz O, Pulfer A, et al. Organellar proteomics reveals hundreds of novel nuclear proteins in the malaria parasite Plasmodium falciparum. *Genome Biol*. 2012; 13: R108. <https://doi.org/10.1186/gb-2012-13-11-r108> PMID: 23181666
26. Costanzo M, VanderSluis B, Koch EN, Baryshnikova A, Pons C, Tan G, et al. A global genetic interaction network maps a wiring diagram of cellular function. *Science*. 2016; 353: aaf1420-aaf1420. <https://doi.org/10.1126/science.aaf1420> PMID: 27708008
27. Srivas R, Shen JP, Yang CC, Sun SM, Li J, Gross AM, et al. A Network of Conserved Synthetic Lethal Interactions for Exploration of Precision Cancer Therapy. *Mol Cell*. 2016; 63: 514–525. <https://doi.org/10.1016/j.molcel.2016.06.022> PMID: 27453043
28. Logan MR, Nguyen T, Szapitel N, Knockleby J, Por H, Zadworny M, et al. Genetic interaction network of the *Saccharomyces cerevisiae* type 1 phosphatase Glc7. *BMC Genomics*. 2008; 9: 336. <https://doi.org/10.1186/1471-2164-9-336> PMID: 18627629
29. Walsh EP, Lamont DJ, Beattie KA, Stark MJR. Novel Interactions of *Saccharomyces cerevisiae* Type 1 Protein Phosphatase Identified by Single-Step Affinity Purification and Mass Spectrometry †. *Biochemistry*. 2002; 41: 2409–2420. <https://doi.org/10.1021/bi015815e> PMID: 11841235
30. Hirano K, Ito M, Hartshorne DJ. Interaction of the ribosomal protein, L5, with protein phosphatase type 1. *J Biol Chem*. American Society for Biochemistry and Molecular Biology; 1995; 270: 19786–90. <https://doi.org/10.1074/JBC.270.34.19786> PMID: 7649987
31. Hutchinson JA, Shanware NP, Chang H, Tibbetts RS. Regulation of Ribosomal Protein S6 Phosphorylation by Casein Kinase 1 and Protein Phosphatase 1. *J Biol Chem*. 2011; 286: 8688–8696. <https://doi.org/10.1074/jbc.M110.141754> PMID: 21233202
32. Ceulemans H, Bollen M. Functional Diversity of Protein Phosphatase-1, a Cellular Economizer and Reset Button. *Physiol Rev*. 2004; 84: 1–39. <https://doi.org/10.1152/physrev.00013.2003> PMID: 14715909
33. Fardilha M, Esteves SLC, Korrodi-Gregório L, Vintém AP, Domingues SC, Rebelo S, et al. Identification of the human testis protein phosphatase 1 interactome. *Biochem Pharmacol*. 2011; 82: 1403–1415. <https://doi.org/10.1016/j.bcp.2011.02.018> PMID: 21382349
34. Lagerbauer B, Liu S, Makarov E, Vornlocher H-P, Makarova O, Ingelfinger D, et al. The human U5 snRNP 52K protein (CD2BP2) interacts with U5-102K (hPrp6), a U4/U6.U5 tri-snRNP bridging protein, but dissociates upon tri-snRNP formation. *RNA*. 2005; 11: 598–608. <https://doi.org/10.1261/ma.2300805> PMID: 15840814
35. Albert GI, Schell C, Kirschner KM, Schäfer S, Naumann R, Müller A, et al. The GYF domain protein CD2BP2 is critical for embryogenesis and podocyte function. *J Mol Cell Biol*. 2015; 7: 402–414. <https://doi.org/10.1093/jmcb/mjv039> PMID: 26082520
36. Philip N, Waters AP. Conditional Degradation of Plasmodium Calcineurin Reveals Functions in Parasite Colonization of both Host and Vector. *Cell Host Microbe*. 2015; 18: 122–131. <https://doi.org/10.1016/j.chom.2015.05.018> PMID: 26118994
37. Gallego M, Virshup DM. Protein serine/threonine phosphatases: life, death, and sleeping. *Curr Opin Cell Biol*. 2005; 17: 197–202. <https://doi.org/10.1016/j.ceb.2005.01.002> PMID: 15780597
38. Rebelo S, Santos M, Martins F, da Cruz e Silva EF, da Cruz e Silva OAB. Protein phosphatase 1 is a key player in nuclear events. *Cell Signal*. 2015; 27: 2589–2598. <https://doi.org/10.1016/j.cellsig.2015.08.007> PMID: 26275498
39. Khan SM, Franke-Fayard B, Mair GR, Lasonder E, Janse CJ, Mann M, et al. Proteome Analysis of Separated Male and Female Gametocytes Reveals Novel Sex-Specific Plasmodium Biology. *Cell*. Cell Press; 2005; 121: 675–687. <https://doi.org/10.1016/J.CELL.2005.03.027> PMID: 15935755

40. Miao J, Chen Z, Wang Z, Shrestha S, Li X, Li R, et al. Sex-Specific Biology of the Human Malaria Parasite Revealed from the Proteomes of Mature Male and Female Gametocytes. *Mol Cell Proteomics*. 2017; 16: 537–551. <https://doi.org/10.1074/mcp.M116.061804> PMID: 28126901
41. Tao D, Ubaida-Mohien C, Mathias DK, King JG, Pastrana-Mena R, Tripathi A, et al. Sex-partitioning of the *Plasmodium falciparum* Stage V Gametocyte Proteome Provides Insight into *falciparum*-specific Cell Biology. *Mol Cell Proteomics*. 2014; 13: 2705–2724. <https://doi.org/10.1074/mcp.M114.040956> PMID: 25056935
42. Lasonder E, Rijpma SR, van Schaijk BCL, Hoeijmakers WAM, Kensche PR, Gresnigt MS, et al. Integrated transcriptomic and proteomic analyses of *P. falciparum* gametocytes: molecular insight into sex-specific processes and translational repression. *Nucleic Acids Res. Oxford University Press*; 2016; 44: 6087–101. <https://doi.org/10.1093/nar/gkw536> PMID: 27298255
43. Olivieri A, Bertuccini L, Deligianni E, Franke-Fayard B, Currà C, Siden-Kiamos I, et al. Distinct properties of the egress-related osmiophilic bodies in male and female gametocytes of the rodent malaria parasite *Plasmodium berghei*. *Cell Microbiol. John Wiley & Sons, Ltd (10.1111)*; 2015; 17: 355–368. <https://doi.org/10.1111/cmi.12370> PMID: 25262869
44. De Koning-Ward TF, Olivieri A, Bertuccini L, Hood A, Silvestrini F, Charvalias K, et al. The role of osmiophilic bodies and Pfg377 expression in female gametocyte emergence and mosquito infectivity in the human malaria parasite *Plasmodium falciparum*. *Mol Microbiol*. 2007; 67: 278–290. <https://doi.org/10.1111/j.1365-2958.2007.06039.x> PMID: 18086189
45. Tomas AM, Margos G, Dimopoulos G, van Lin LH, de Koning-Ward TF, Sinha R, et al. P25 and P28 proteins of the malaria ookinete surface have multiple and partially redundant functions. *EMBO J. European Molecular Biology Organization*; 2001; 20: 3975–83. <https://doi.org/10.1093/emboj/20.15.3975> PMID: 11483501
46. Sidén-Kiamos I, Vlachou D, Margos G, Beetsma A, Waters AP, Sinden RE, et al. Distinct roles for pbs21 and pbs25 in the in vitro ookinete to oocyst transformation of *Plasmodium berghei*. *J Cell Sci*. 2000; 113 Pt 19: 3419–26. Available: <http://www.ncbi.nlm.nih.gov/pubmed/10984433>
47. Lavazec C, Moreira CK, Mair GR, Waters AP, Janse CJ, Templeton TJ. Analysis of mutant *Plasmodium berghei* parasites lacking expression of multiple PbCCp genes. *Mol Biochem Parasitol*. 2009; 163: 1–7. <https://doi.org/10.1016/j.molbiopara.2008.09.002> PMID: 18848846
48. Raine JD, Ecker A, Mendoza J, Tewari R, Stanway RR, Sinden RE. Female inheritance of malarial *lap* genes is essential for mosquito transmission. *PLoS Pathog. Public Library of Science*; 2007; 3: e30. <https://doi.org/10.1371/journal.ppat.0030030> PMID: 17335349
49. Clark IA, Rockett KA. The cytokine theory of human cerebral malaria. *Parasitol Today*. 1994; 10: 410–2. Available: <http://www.ncbi.nlm.nih.gov/pubmed/15275552> PMID: 15275552
50. Dunst J, Kamena F, Matuschewski K. Cytokines and Chemokines in Cerebral Malaria Pathogenesis. *Front Cell Infect Microbiol*. 2017; 7: 324. <https://doi.org/10.3389/fcimb.2017.00324> PMID: 28775960
51. Engwerda C, Belnoue E, Grüner AC, Rénia L. Experimental models of cerebral malaria. *Curr Top Microbiol Immunol*. 2005; 297: 103–43. Available: <http://www.ncbi.nlm.nih.gov/pubmed/16265904> PMID: 16265904
52. Prakash D, Fesel C, Jain R, Cazenave P-A, Mishra GC, Pied S. Clusters of cytokines determine malaria severity in *Plasmodium falciparum*-infected patients from endemic areas of Central India. *J Infect Dis*. 2006; 194: 198–207. <https://doi.org/10.1086/504720> PMID: 16779726
53. Briquet S, Lawson-Hogban N, Boisson B, Soares MP, Péronet R, Smith L, et al. Disruption of Parasite *hmgb2* Gene Attenuates *Plasmodium berghei* ANKA Pathogenicity. *Adams JH, editor. Infect Immun*. 2015; 83: 2771–2784. <https://doi.org/10.1128/IAI.03129-14> PMID: 25916985
54. Spaccapelo R, Aime E, Caterbi S, Arcidiacono P, Capuccini B, Di Cristina M, et al. Disruption of plasmeprin-4 and merozoites surface protein-7 genes in *Plasmodium berghei* induces combined virulence-attenuated phenotype. *Sci Rep*. 2011; 1: 39. <https://doi.org/10.1038/srep00039> PMID: 22355558
55. Spaccapelo R, Janse CJ, Caterbi S, Franke-Fayard B, Bonilla JA, Syphard LM, et al. Plasmeprin 4-deficient *Plasmodium berghei* are virulence attenuated and induce protective immunity against experimental malaria. *Am J Pathol*. 2010; 176: 205–17. <https://doi.org/10.2353/ajpath.2010.090504> PMID: 20019192
56. Zhang M, Wang C, Otto TD, Oberstaller J, Liao X, Adapa SR, et al. Uncovering the essential genes of the human malaria parasite *Plasmodium falciparum* by saturation mutagenesis. *Science*. 2018; 360: eaap7847. <https://doi.org/10.1126/science.aap7847> PMID: 29724925
57. Bushell E, Gomes AR, Sanderson T, Anar B, Girling G, Herd C, et al. Functional Profiling of a *Plasmodium* Genome Reveals an Abundance of Essential Genes. *Cell*. 2017; 170: 260–272.e8. <https://doi.org/10.1016/j.cell.2017.06.030> PMID: 28708996
58. Modrzynska K, Pfander C, Chappell L, Yu L, Suarez C, Dundas K, et al. A Knockout Screen of *ApiAP2* Genes Reveals Networks of Interacting Transcriptional Regulators Controlling the *Plasmodium*

- Life Cycle. *Cell Host Microbe*. 2017; 21: 11–22. <https://doi.org/10.1016/j.chom.2016.12.003> PMID: 28081440
59. Srinivasan P, Beatty WL, Diouf A, Herrera R, Ambroggio X, Moch JK, et al. Binding of Plasmodium merozoite proteins RON2 and AMA1 triggers commitment to invasion. *Proc Natl Acad Sci U S A*. 2011; 108: 13275–80. <https://doi.org/10.1073/pnas.1110303108> PMID: 21788485
  60. Srinivasan P, Yasgar A, Luci DK, Beatty WL, Hu X, Andersen J, et al. Disrupting malaria parasite AMA1-RON2 interaction with a small molecule prevents erythrocyte invasion. *Nat Commun*. 2013; 4: 2261. <https://doi.org/10.1038/ncomms3261> PMID: 23907321
  61. Cao J, Kaneko O, Thongkukiatkul A, Tachibana M, Otsuki H, Gao Q, et al. Rhoptry neck protein RON2 forms a complex with microneme protein AMA1 in Plasmodium falciparum merozoites. *Parasitol Int*. 2009; 58: 29–35. <https://doi.org/10.1016/j.parint.2008.09.005> PMID: 18952195
  62. Richard D, MacRaild CA, Riglar DT, Chan J-A, Foley M, Baum J, et al. Interaction between Plasmodium falciparum apical membrane antigen 1 and the rhoptry neck protein complex defines a key step in the erythrocyte invasion process of malaria parasites. *J Biol Chem*. 2010; 285: 14815–22. <https://doi.org/10.1074/jbc.M109.080770> PMID: 20228060
  63. Vulliez-Le Normand B, Tonkin ML, Lamarque MH, Langer S, Hoos S, Roques M, et al. Structural and functional insights into the malaria parasite moving junction complex. Phillips M, editor. *PLoS Pathog*. 2012; 8: e1002755. <https://doi.org/10.1371/journal.ppat.1002755> PMID: 22737069
  64. Cowman AF, Tonkin CJ, Tham W-H, Duraisingh MT. The Molecular Basis of Erythrocyte Invasion by Malaria Parasites. *Cell Host Microbe*. 2017; 22: 232–245. <https://doi.org/10.1016/j.chom.2017.07.003> PMID: 28799908
  65. Braz JC, Gregory K, Pathak A, Zhao W, Sahin B, Klevitsky R, et al. PKC-alpha regulates cardiac contractility and propensity toward heart failure. *Nat Med*. 2004; 10: 248–54. <https://doi.org/10.1038/nm1000> PMID: 14966518
  66. El-Armouche A, Bednorz A, Pamminger T, Ditz D, Didié M, Dobrev D, et al. Role of calcineurin and protein phosphatase-2A in the regulation of phosphatase inhibitor-1 in cardiac myocytes. *Biochem Biophys Res Commun*. 2006; 346: 700–706. <https://doi.org/10.1016/j.bbrc.2006.05.182> PMID: 16774736
  67. Rodriguez P, Mitton B, Nicolaou P, Chen G, Kranias EG. Phosphorylation of human inhibitor-1 at Ser67 and/or Thr75 attenuates stimulatory effects of protein kinase A signaling in cardiac myocytes. *Am J Physiol Circ Physiol*. 2007; 293: H762–H769. <https://doi.org/10.1152/ajpheart.00104.2007> PMID: 17416610
  68. Zhang C, Li Z, Cui H, Jiang Y, Yang Z, Wang X, et al. Systematic CRISPR-Cas9-Mediated Modifications of Plasmodium yoelii ApiAP2 Genes Reveal Functional Insights into Parasite Development. Sibley LD, editor. *MBio*. 2017; 8. <https://doi.org/10.1128/mBio.01986-17> PMID: 29233900
  69. Sorber K, Dimon MT, DeRisi JL. RNA-Seq analysis of splicing in Plasmodium falciparum uncovers new splice junctions, alternative splicing and splicing of antisense transcripts. *Nucleic Acids Res*. 2011; 39: 3820–3835. <https://doi.org/10.1093/nar/gkq1223> PMID: 21245033
  70. Freund C, Dötsch V, Nishizawa K, Reinherz EL, Wagner G. The GYF domain is a novel structural fold that is involved in lymphoid signaling through proline-rich sequences. *Nat Struct Biol*. 1999; 6: 656–60. <https://doi.org/10.1038/10712> PMID: 10404223
  71. Guttery DS, Poulin B, Ferguson DJP, Szöör B, Wickstead B, Carroll PL, et al. A unique protein phosphatase with kelch-like domains (PPKL) in Plasmodium modulates ookinete differentiation, motility and invasion. Haystead TAJ, editor. *PLoS Pathog*. 2012; 8: e1002948. <https://doi.org/10.1371/journal.ppat.1002948> PMID: 23028336
  72. Janse CJ, Ramesar J, Waters AP. High-efficiency transfection and drug selection of genetically transformed blood stages of the rodent malaria parasite Plasmodium berghei. *Nat Protoc*. 2006; 1: 346–56. <https://doi.org/10.1038/nprot.2006.53> PMID: 17406255
  73. Beetsma AL, van de Wiel TJ, Sauerwein RW, Eling WM. Plasmodium berghei ANKA: purification of large numbers of infectious gametocytes. *Exp Parasitol*. 1998; 88: 69–72. <https://doi.org/10.1006/expr.1998.4203> PMID: 9501851
  74. Lesage KM, Huot L, Mouveaux T, Courjol F, Saliou J-M, Gissot M. Cooperative binding of ApiAP2 transcription factors is crucial for the expression of virulence genes in Toxoplasma gondii. *Nucleic Acids Res*. Oxford University Press; 2018; 46: 6057–6068. <https://doi.org/10.1093/nar/gky373> PMID: 29788176
  75. Janse C; Ramesar J; Waters A. Plasmodium berghei: general parasitological methods. 2004.
  76. Lipecka J, Chhuon C, Bourderioux M, Bessard M-A, van Endert P, Edelman A, et al. Sensitivity of mass spectrometry analysis depends on the shape of the filtration unit used for filter aided sample preparation (FASP). *Proteomics*. 2016; 16: 1852–7. <https://doi.org/10.1002/pmic.201600103> PMID: 27219663
  77. Cox J, Mann M. MaxQuant enables high peptide identification rates, individualized p.p.b.-range mass accuracies and proteome-wide protein quantification. *Nat Biotechnol*. 2008; 26: 1367–72. <https://doi.org/10.1038/nbt.1511> PMID: 19029910



78. Lubber CA, Cox J, Lauterbach H, Fancke B, Selbach M, Tschopp J, et al. Quantitative proteomics reveals subset-specific viral recognition in dendritic cells. *Immunity*. 2010; 32: 279–89. <https://doi.org/10.1016/j.immuni.2010.01.013> PMID: 20171123
79. Tyanova S, Temu T, Sinitcyn P, Carlson A, Hein MY, Geiger T, et al. The Perseus computational platform for comprehensive analysis of (prote)omics data. *Nat Methods*. 2016; 13: 731–40. <https://doi.org/10.1038/nmeth.3901> PMID: 27348712
80. Babicki S, Arndt D, Marcu A, Liang Y, Grant JR, Maciejewski A, et al. Heatmapper: web-enabled heat mapping for all. *Nucleic Acids Res*. 2016; 44: W147–W153. <https://doi.org/10.1093/nar/gkw419> PMID: 27190236
81. Brochet M, Collins MO, Smith TK, Thompson E, Sebastian S, Volkmann K, et al. Phosphoinositide metabolism links cGMP-dependent protein kinase G to essential Ca<sup>2+</sup> signals at key decision points in the life cycle of malaria parasites. Schneider DS, editor. *PLoS Biol*. 2014; 12: e1001806. <https://doi.org/10.1371/journal.pbio.1001806> PMID: 24594931
82. Invergo BM, Brochet M, Yu L, Choudhary J, Beltrao P, Billker O. Sub-minute Phosphoregulation of Cell Cycle Systems during Plasmodium Gamete Formation. *Cell Rep*. 2017; 21: 2017–2029. <https://doi.org/10.1016/j.celrep.2017.10.071> PMID: 29141230
83. Lasonder E, Green JL, Camarda G, Talabani H, Holder AA, Langsley G, et al. The Plasmodium falciparum schizont phosphoproteome reveals extensive phosphatidylinositol and cAMP-protein kinase A signaling. *J Proteome Res*. 2012; 11: 5323–37. <https://doi.org/10.1021/pr300557m> PMID: 23025827
84. Solyakov L, Halbert J, Alam MM, Semblat J-P, Dorin-Semblat D, Reininger L, et al. Global kinomic and phospho-proteomic analyses of the human malaria parasite Plasmodium falciparum. *Nat Commun*. 2011; 2: 565. <https://doi.org/10.1038/ncomms1558> PMID: 22127061
85. Treeck M, Sanders JL, Elias JE, Boothroyd JC. The phosphoproteomes of Plasmodium falciparum and Toxoplasma gondii reveal unusual adaptations within and beyond the parasites' boundaries. *Cell Host Microbe*. 2011; 10: 410–9. <https://doi.org/10.1016/j.chom.2011.09.004> PMID: 22018241