



Prognostic value of FDG-PET in patients with mantle cell lymphoma: results from the LyMa-PET Project

Clément Bailly, Thomas Carlier, Alina Berriolo-Riedinger, Olivier Casasnovas, Emmanuel Gyan, Michel Meignan, Anne Moreau, Barbara Burroni, Loïc Djaileb, Rémy Gressin, et al.

► To cite this version:

Clément Bailly, Thomas Carlier, Alina Berriolo-Riedinger, Olivier Casasnovas, Emmanuel Gyan, et al.. Prognostic value of FDG-PET in patients with mantle cell lymphoma: results from the LyMa-PET Project. *Haematologica*, 2020, 104 (1), pp.e33-e36. 10.3324/haematol.2019.223016 . inserm-02266351

HAL Id: inserm-02266351

<https://inserm.hal.science/inserm-02266351>

Submitted on 14 Aug 2019

HAL is a multi-disciplinary open access archive for the deposit and dissemination of scientific research documents, whether they are published or not. The documents may come from teaching and research institutions in France or abroad, or from public or private research centers.

L'archive ouverte pluridisciplinaire **HAL**, est destinée au dépôt et à la diffusion de documents scientifiques de niveau recherche, publiés ou non, émanant des établissements d'enseignement et de recherche français ou étrangers, des laboratoires publics ou privés.



Journal of The Ferrata Storti Foundation

Prognostic value of FDG-PET in patients with mantle cell lymphoma: results from the LyMa-PET Project

by Clément Bailly, Thomas Carlier, Alina Berriolo-Riedinger, Olivier Casasnovas, Emmanuel Gyan, Michel Meignan, Anne Moreau, Barbara Burroni, Loïc Djaileb, Remy Gressin, Anne Devillers, Thierry Lamy, Catherine Thieblemont, Olivier Hermine, Françoise Kraeber-Bodéré, Steven Le Gouill, and Caroline Bodet-Milin

Haematologica 2019 [Epub ahead of print]

Citation: Clément Bailly, Thomas Carlier, Alina Berriolo-Riedinger, Olivier Casasnovas, Emmanuel Gyan, Michel Meignan, Anne Moreau, Barbara Burroni, Loïc Djaileb, Remy Gressin, Anne Devillers, Thierry Lamy, Catherine Thieblemont, Olivier Hermine, Françoise Kraeber-Bodéré, Steven Le Gouill, and Caroline Bodet-Milin. Prognostic value of FDG-PET in patients with mantle cell lymphoma: results from the LyMa-PET Project. Haematologica. 2019; 104:xxx doi:10.3324/haematol.2019.223016

Publisher's Disclaimer.

E-publishing ahead of print is increasingly important for the rapid dissemination of science. Haematologica is, therefore, E-publishing PDF files of an early version of manuscripts that have completed a regular peer review and have been accepted for publication. E-publishing of this PDF file has been approved by the authors. After having E-published Ahead of Print, manuscripts will then undergo technical and English editing, typesetting, proof correction and be presented for the authors' final approval; the final version of the manuscript will then appear in print on a regular issue of the journal. All legal disclaimers that apply to the journal also pertain to this production process.

Prognostic value of FDG-PET in patients with mantle cell lymphoma: results from the LyMa-PET Project.

Clément Bailly^{1,2}, Thomas Carlier^{1,2}, Alina Berriolo-Riedinger³, Olivier Casasnovas⁴, Emmanuel Gyan⁵, Michel Meignan⁶, Anne Moreau⁷, Barbara Burroni⁸, Loïc Djaileb⁹, Remy Gressin¹⁰, Anne Devillers¹¹, Thierry Lamy^{12,13}, Catherine Thieblemont¹⁴, Olivier Hermine¹⁵, Françoise Kraeber-Bodéré^{1,2,16}, Steven Le Gouill^{1, 17} and Caroline Bodet-Milin^{1,2}

[Ⓜ]: Contributed equally to this work

¹ CRCINA, INSERM, CNRS, Université d'Angers, Université de Nantes, Nantes, France.

² Department of Nuclear Medicine, CHU Nantes, 1 place Alexis Ricordeau, 44093 Nantes, France.

³ Department of Nuclear Medicine, CLCC Georges François Leclerc, 1 Rue Pr Marion, 21079 Dijon, France.

⁴ Department of Hematology, CHU Dijon Bourgogne, 2 bd Maréchal de Lattre de Tassigny, 21000 Dijon France.

⁵ Department of Hematology, CHU Tours, 2 Boulevard Tonnelle, 37044 Tours cedex 9, France.

⁶ LYSA Imaging, Creteil, France

⁷ Department of Pathology, CHU Nantes, 1 place Alexis Ricordeau, 44093 Nantes, France.

⁸ Department of Pathology, CHU Paris Hôpital Cochin, 27 Rue Du Faubourg Saint Jacques 75014 Paris, France.

⁹ Department of Nuclear Medicine, CHU Grenoble-Alpes, Boulevard De La Chantourne, 28043 Grenoble cedex 9

¹⁰ Onco Hematology Department, Hospital University Grenoble, La Tronche, Grenoble, France

¹¹ Department of Nuclear Medicine, CLCC Eugene Marquis, Avenue de la Bataille Flandres-Dunkerque, 35000 Rennes, France.

¹² Department of Hematology, CHU Rennes, 2 rue Henri Le Guilloux, 35033 Rennes cedex 9, France.

¹³ Inserm U1236, University of Rennes UR1, France

¹⁴ Onco Hematology Department, CHU Paris-GH St-Louis Lariboisière, 1 avenue Claude Vellefaux, 75010 Paris, France

¹⁵ Department of Hematology, CHU Paris - Hôpital Necker-Enfants Malades, 149 rue de Sèvres, 75743 Paris, France.

¹⁶ Department of Nuclear Medicine, ICO-René Gauducheau, Boulevard Jacques Monod, 44805 Saint-Herblain, France.

¹⁷ Department of Hematology, CHU Nantes, 1 place Alexis Ricordeau, 44093 Nantes, France.

- Corresponding author:

Pr Steven Le Gouill
Department of Hematology
CHU Nantes,
1 place Alexis Ricordeau
44093 Nantes, France.

steven.legouill@chu-nantes.fr

- Count:

- Text word count: 1390
- Table/figure count: 0 Tables / 2 Figures
- Number of references: 15
- Supplementary data: 4 Tables

This study was presented during the 57th ASH Annual Meeting, the SNMMI 2015 Annual Meeting and the 6th International Workshop on PET in Lymphoma, (Menton 2016).

Keywords:

Mantle Cell Lymphoma; FDG-PET; SUV; LyMa trial

Running Title :

Prognostic value of FDG-PET in patients with MCL

Mantle cell lymphoma (MCL) is an incurable aggressive non-Hodgkin lymphoma (NHL), which accounts for approximately 5% of all NHLs. Novel agents and rituximab maintenance therapy (RM) have greatly improved patient outcomes,^{1,2} but most patients still experience recurrent relapses. This highlights the need for risk-adapted therapies¹. The prognostic value of [(18)F]Fluoro-Deoxyglucose Positron-Emission-Tomography (FDG-PET) has already been demonstrated in various lymphoma entities,³ but its utility in MCL remains unclear⁴⁻¹². In the LyMa-PET project, we centrally reviewed PET results from patients enrolled in the LyMa trial, a prospective, multicenter, international, randomized phase III trial (NCT00921414) that investigated RM after autologous stem-cell transplantation (ASCT) in young previously untreated MCL patients². Our aim was to investigate the prognostic value of the image-derived FDG-PET quantitative indices.

In the LyMa trial, FDG-PET was optional at diagnosis, before ASCT (iPET) and after-ASCT (eotPET), and not used in the decision-making strategy. FDG-PET images were acquired in voluntary centers participating in the LyMa trial, according to the local protocol and following the rules of good practice¹³. FDG-PET data were centrally collected and analyzed on a dedicated workstation (PLANET®Onco-Solution, Dosisoft, France) and evaluated by two experienced readers (CBM and CB), who were blinded to clinical information, treatment arm and follow-up.

For the initial staging, a positive FDG-PET signal was defined as an area of increased uptake thought to be lymphoma-related. Different quantitative metrics were extracted from the FDG-PET data set, measured as volume of interest (VOI) covering the entire nodal and extra-nodal lesions as visualized by increased FDG uptake: SUVmax, defined as the Standard-Uptake-Value (SUV) of the maximum intensity voxel within the VOI; Metabolic Tumor Volume (MTV), defined as the functional volume of the area with the highest uptake, using a 40% thresholding for the segmentation-step; Total Lesion Glycolysis (TLG), defined as the product of SUVmean (average measure of SUV within the calculated boundaries of a lesion) and MTV of the area with the highest uptake. A SUVmax gradient was calculated at baseline for each patient as the difference between SUVmax and the pathological focus with minimal activity. For each metric, the baseline value (i.e. for SUVmax: SUVmax), the values before-ASCT (i.e. for SUVmax: SUVmax_{iPET}) and after-ASCT (i.e. for SUVmax: SUVmax_{eotPET}) were considered. The reduction between metrics at iPET, eotPET and PET at baseline were calculated (i.e. for SUVmax: $\Delta\text{SUVmax}_{iPET}$ and $\Delta\text{SUVmax}_{eotPET}$). iPET and eotPET were also interpreted visually using the five-point Deauville scale (DS), as recommended³. Details regarding statistical methods are described in the Supplemental data.

Among the 299 patients enrolled in the LyMa study, FDG-PET data from 104 patients were retrieved from 28 different centers (out of 81 centers). This included 104 examinations performed at diagnosis, 64 prior to ASCT and 44 after ASCT. The LyMa-PET population did not differ statistically from the entire LyMa population regarding baseline characteristics, randomization arm, follow up and outcome (Table S1). The four year-PFS calculated from the time of inclusion for the 104 patients was 71.1 %, 95%CI [61.4%;78.8%]; 4y-OS was 79.6%,

95%CI [70.5%;86.2%] and the estimated median follow-up was 56.5 months, 95%CI [52.6;64.1].

We first analyzed FDG-PET parameters at diagnosis and investigated their prognostic value. As shown in previous reports¹¹, FDG-PET was pathologic in all patients. The sensitivity of FDG-PET for the detection of splenic lesions was 100% (50/50). According to conventional assessment, 80.8% of patients (84/104) had extranodal locations at diagnosis (including bone marrow, digestive tract or ear/nose/throat sites). The sensitivity of FDG-PET was only 42 % for these extranodal lesions (40/104). Quantitative metrics were extracted in all patients but one, due to deviations on quality controls (n=103) (Table S2). FDG avidity was heterogeneous and varied greatly from one patient to another, with SUVmax ranging from 1.8 to 33.8 (median=7.39, Table S2), in line with reported data^{4,5}. A broad intra-individual heterogeneity was also observed with a SUVmax gradient >5 in 53 cases (51%) and >10 in 24 cases (23%). With the oncogenesis of MCL being a multistep process, progressing from a less to a more aggressive form¹⁴, a low SUVmax value might be related to less aggressive MCL cells, while high SUVmax values might reflect a more aggressive tumor with a high proliferative index (as observed in Richter's syndrome). Indeed, an elevated SUVmax (>10.3) was found to be associated with aggressive variants (Fisher-Exact p=0.004 and p=0.003, respectively) and Ki67>30% (n=70; Fisher Exact p<0.001 and p<0.001). In contrast, SUVmax was not associated with the MIPI score (classified as Low/Intermediate/High) (Fisher-Exact p=0.529 and p=0.680). These results support the existence of a close relationship between tumor cell biology and SUV in MCL. In addition, they suggest that SUVmax calculation at diagnosis could be used as a prognostic parameter to assess tumor cell aggressiveness and in particular tumor cell proliferation. Unlike the measurement of Ki67 positivity in a tumor biopsy, FDG-PET has the advantage of being a whole-body non-invasive technique.

In terms of prognostic value, all FDG-PET metrics determined on the area with the highest uptake significantly impacted both OS and PFS in the univariate analyses. Patients with a high SUVmax (>10.3) or SUVmax gradient>10 or a high MTV (>41.47) had a shorter PFS (p=0.0003, p=0.0061 and p=0.0043, respectively) and OS (p=0.0003, p= 0.0275 and p=0.0085, respectively) (Figure 1). In the multivariate analysis, only SUVmax>10.3 (Table S3) was associated with shorter PFS (p<0.001, HR=5.41; 95% CI: 2.49–11.78) and OS (p<0.001, HR=6.32; 95% CI: 2.58–15.45). We then investigated the predictive value of a scoring system that combines MIPI (Low-Int vs High) and SUVmax (<=10.3 vs >10.3), as previously described⁴. Patients could be classified into three distinct survival groups (Figure 2). The difference in survival was consistent after adjusting for treatment arm (PFS: Group 1 HR=2.9, Group 2 HR=7.7; OS: Group 1 HR=3.5, Group 2 HR=18.8). Due to the small number of cases in the 2 risk-factors group, these results should be interpreted with caution. When MIPI and SUV max > 10.3 were combined only for intermediate risk patients, a better segregation of two risk groups with significantly different PFS and OS profiles could be achieved (Figure 2). Therefore, patients presenting with a high MIPI or intermediate MIPI plus an SUV max >10.3 at diagnosis might be candidates for alternative therapy.

In contrast to previous reported findings in other lymphoma entities³, no prognostic value of MTV measured on the whole-body was found for PFS or OS (data not shown). These results were calculated in only 33 patients as part of a preliminary study. A large inter-individual variability was observed, with values ranging from 26.7cm³ to 3931cm³. This large difference and the lack of a predictive value on survival might be explained by the frequent splenic involvement in MCL, which increased the MTV while not generally being associated with a poor prognosis¹⁵. However, the volumetric analyses performed on the lesion with the highest uptake showed a negative prognostic impact on both PFS and OS. This observation reinforces the hypothesis that the prognosis of MCL is linked to the most aggressive contingent within the lesion with the highest uptake.

We then investigated response according to iPET and eotPET. It is interesting to note that the most recent update for the management of malignant lymphomas³ does not mandate FDG-PET-based response assessment in MCL outside the context of a clinical trial due to heterogeneous published data^{5,7,12}. Indeed, the present work is the first to explore the value of FDG-PET in a large group of homogeneously treated patients enrolled in a multicenter prospective study. Results are presented in Tables S4 and S5. We found that visual analysis of iPET and eotPET were not associated with better survival regardless of the chosen positivity cut-off (DS=5, DS≥4 or DS≥3), while SUVmax_{iPET} and ΔSUVmax_{eotPET} were associated with improved OS and PFS, respectively. These analyses should be interpreted with caution. Nevertheless, they suggest that the magnitude of residual metabolic activity at an interim timepoint may hold a predictive value and that the tumor's chemosensitivity at the end of the treatment with an objective of complete normalization as measured by ΔSUVmax_{eotPET} seems to be relevant.

In summary, SUVmax of the lesion with the highest uptake determined at diagnosis, has a strong prognostic value for both PFS and OS. A new scoring system combining MIPI and SUVmax might also help to predict patient outcomes. Further prospective investigations are warranted to explore the potential interest of these metrics for therapeutic evaluation. The prospective multicentric LyMa101 study (NCT02896582) will provide an opportunity to confirm these results.

Additional information:

- Financial support:

-This work was supported by Roche France

-This work has been supported in part by grants from the French National Agency for Research, called “Investissements d’Avenir” IRON Labex n° ANR-11-LABX-0018-01, SIRIC ILIAD and ArronaxPlusEquipex n° ANR-11-EQPX-0004, and by grants from DHU Oncogreffe (Nantes -France).

- Disclosures of conflicts of Interest

- Pr. Le Gouill reports personal fees and non-financial support from Roche, grant support and personal fees from JanssenCilag, personal fees from Celgene, Servier and Gilead outside the submitted work.

- No disclosure for all other authors.

References:

1. Dreyling M, Campo E, Hermine O, et al. Newly diagnosed and relapsed mantle cell lymphoma: ESMO Clinical Practice Guidelines for diagnosis, treatment and follow-up. *Ann Oncol*. 2017;28(suppl_4):iv62–iv71.
2. Le Gouill S, Thieblemont C, Oberic L, et al. Rituximab after Autologous Stem-Cell Transplantation in Mantle-Cell Lymphoma. *N Engl J Med*. 2017;377(13):1250–1260.
3. Barrington SF, Mikhaeel NG, Kostakoglu L, et al. Role of imaging in the staging and response assessment of lymphoma: consensus of the International Conference on Malignant Lymphomas Imaging Working Group. *J Clin Oncol*. 2014;32(27):3048–3058.
4. Bodet-Milin C, Touzeau C, Leux C, et al. Prognostic impact of 18F-fluoro-deoxyglucose positron emission tomography in untreated mantle cell lymphoma: a retrospective study from the GOELAMS group. *Eur J Nucl Med Mol Imaging*. 2010;37(9):1633–1642.
5. Mato AR, Svoboda J, Feldman T, et al. Post-treatment (not interim) positron emission tomography-computed tomography scan status is highly predictive of outcome in mantle cell lymphoma patients treated with R-HyperCVAD. *Cancer*. 2012;118(14):3565–3570.
6. Cohen JB, Hall NC, Ruppert AS, et al. Association of pre-transplantation positron emission tomography/computed tomography and outcome in mantle cell lymphoma. *Bone Marrow Transplant*. 2013;48(9):1212–1217.
7. Kedmi M, Avivi I, Ribakovsky E, et al. Is there a role for therapy response assessment with 2-[fluorine-18] fluoro-2-deoxy-D-glucose-positron emission tomography/computed tomography in mantle cell lymphoma? *Leuk Lymphoma*. 2014;55(11):2484–2489.
8. Kolstad A, Laurell A, Jerkeman M, et al. Nordic MCL3 study: 90Y-ibritumomab-tiuxetan added to BEAM/C in non-CR patients before transplant in mantle cell lymphoma. *Blood*. 2014;123(19):2953–2959.
9. Bachanova V, Burns LJ, Ahn KW, et al. Impact of Pretransplantation (18)F-fluorodeoxy Glucose-Positron Emission Tomography Status on Outcomes after Allogeneic Hematopoietic Cell Transplantation for Non-Hodgkin Lymphoma. *Biol Blood Marrow Transplant*. 2015;21(9):1605–1611.
10. Lamonica D, Graf DA, Munteanu MC, Czuczman MS. 18F-FDG PET for Measurement of Response and Prediction of Outcome to Relapsed or Refractory Mantle Cell Lymphoma Therapy with Bendamustine-Rituximab. *J Nucl Med*. 2017;58(1):62–68.
11. Bailly C, Carlier T, Touzeau C, et al. Interest of FDG-PET in the Management of Mantle Cell Lymphoma. *Front Med (Lausanne)*. 2019;6:70.
12. Albano D, Bosio G, Bianchetti N, et al. Prognostic role of baseline 18F-FDG PET/CT metabolic parameters in mantle cell lymphoma. *Ann Nucl Med*. 2019;33(7):449–458.
13. Boellaard R, Delgado-Bolton R, Oyen WJG, et al. FDG PET/CT: EANM procedure guidelines for tumour imaging: version 2.0. *Eur J Nucl Med Mol Imaging* 2015;42(2):328–354.
14. Vogt N, Dai B, Erdmann T, Berdel WE, Lenz G. The molecular pathogenesis of mantle cell lymphoma. *Leuk Lymphoma*. 2017;58(7):1530–1537.

15. Hsi ED, Martin P. Indolent mantle cell lymphoma. *Leuk Lymphoma*. 2014;55(4):761–767.

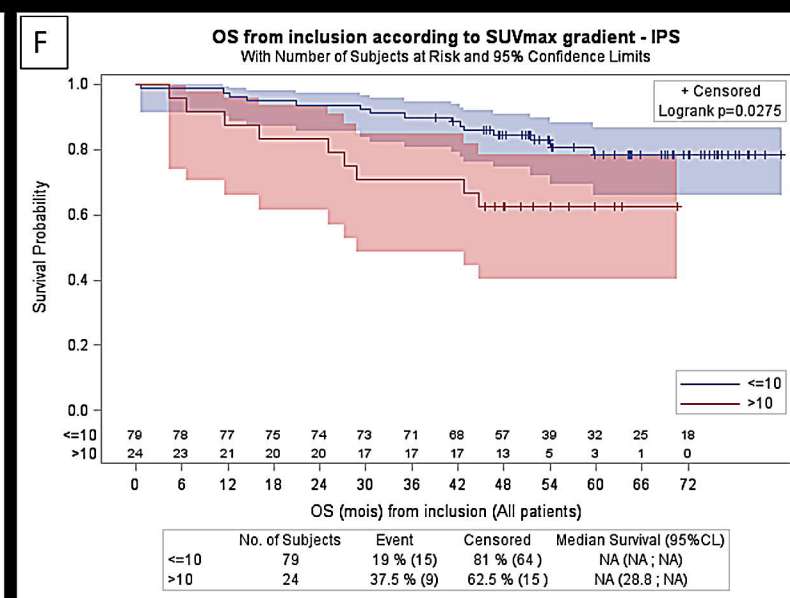
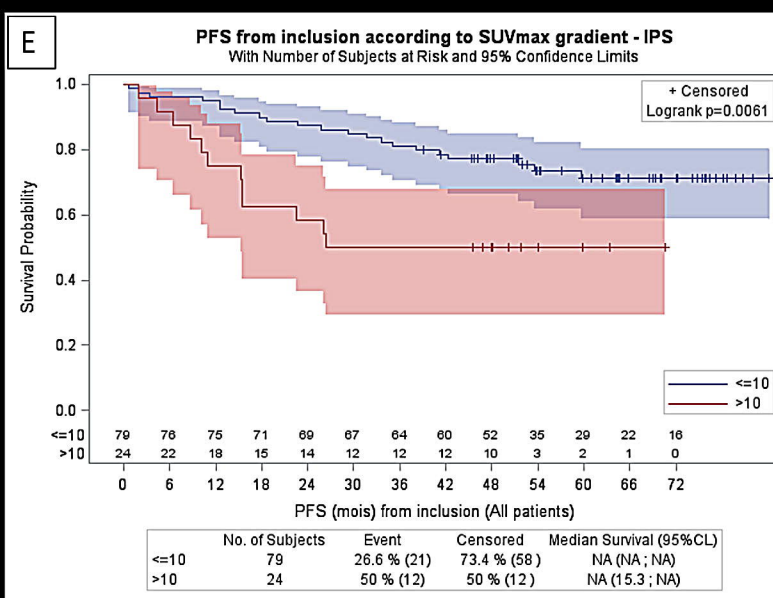
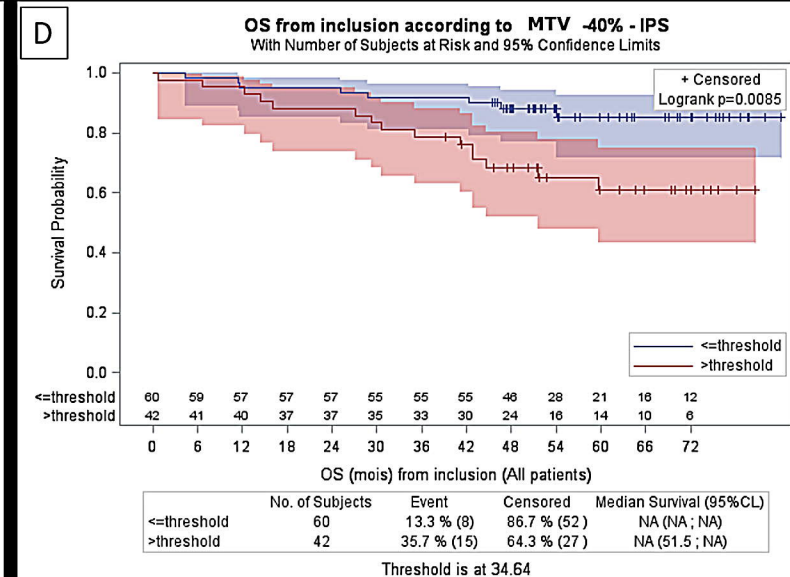
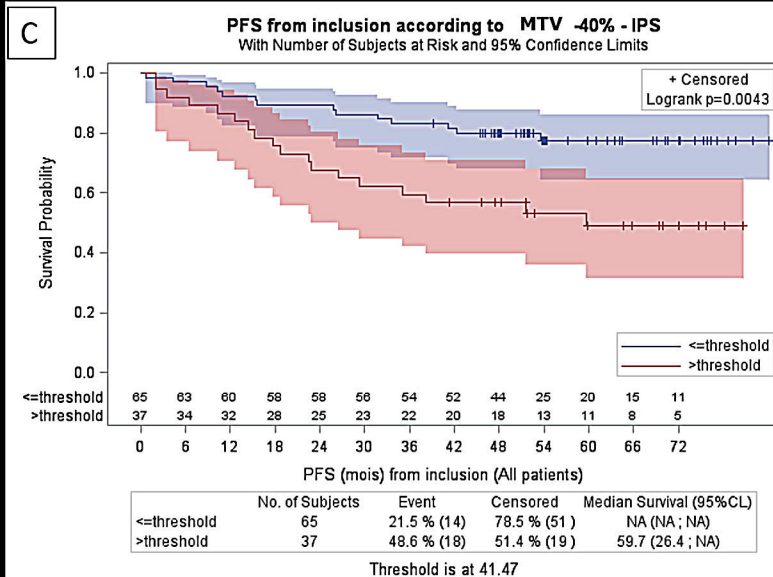
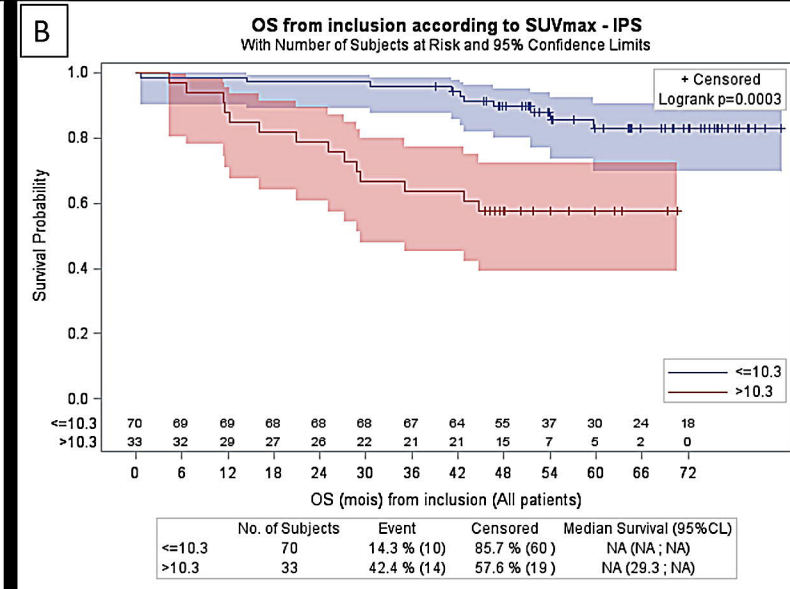
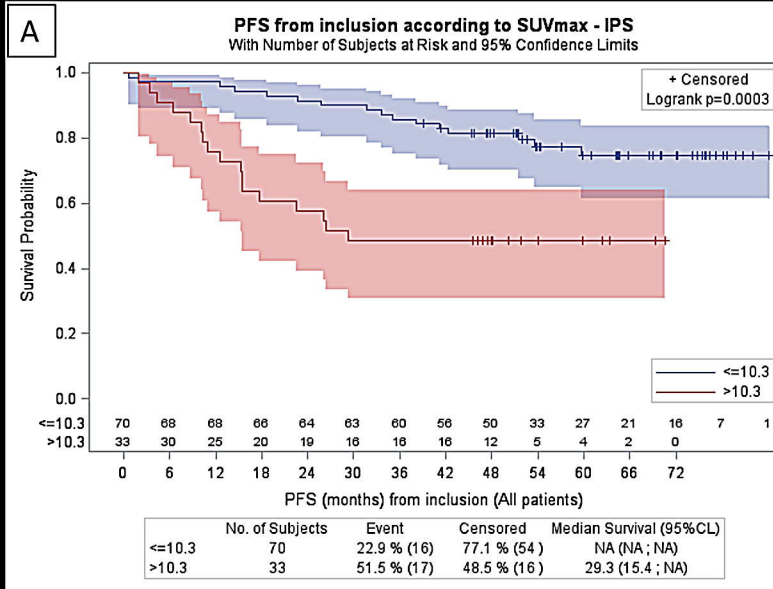
Figure Legends and Footnotes:

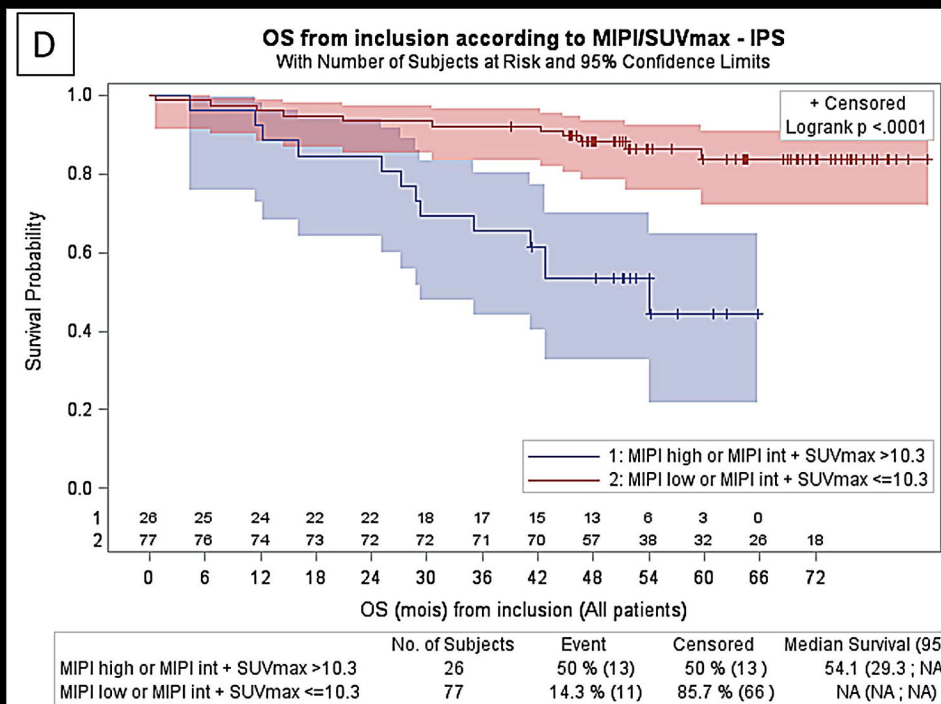
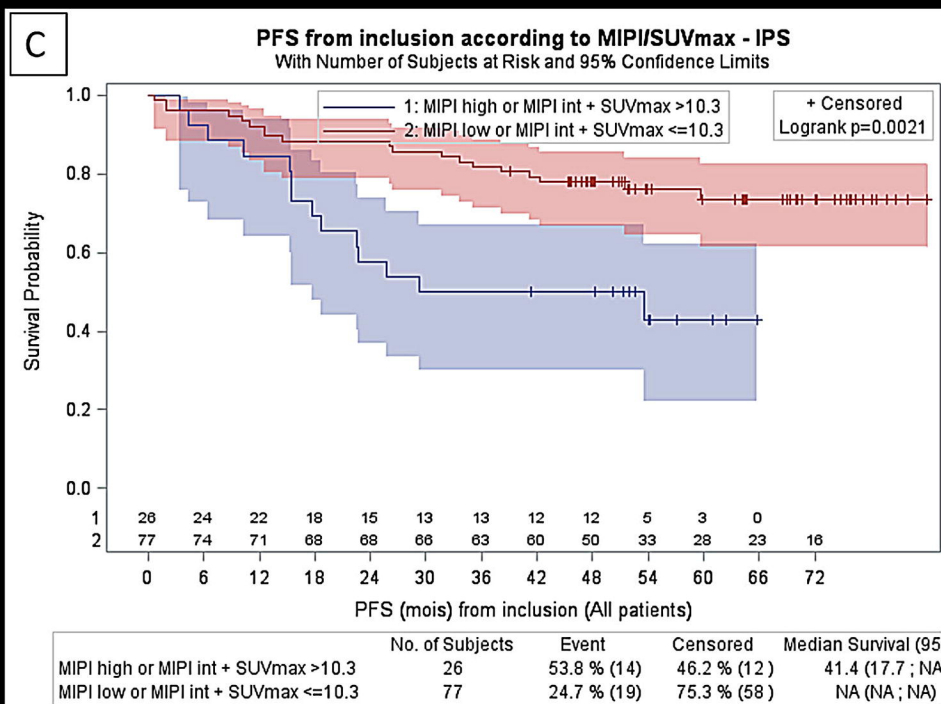
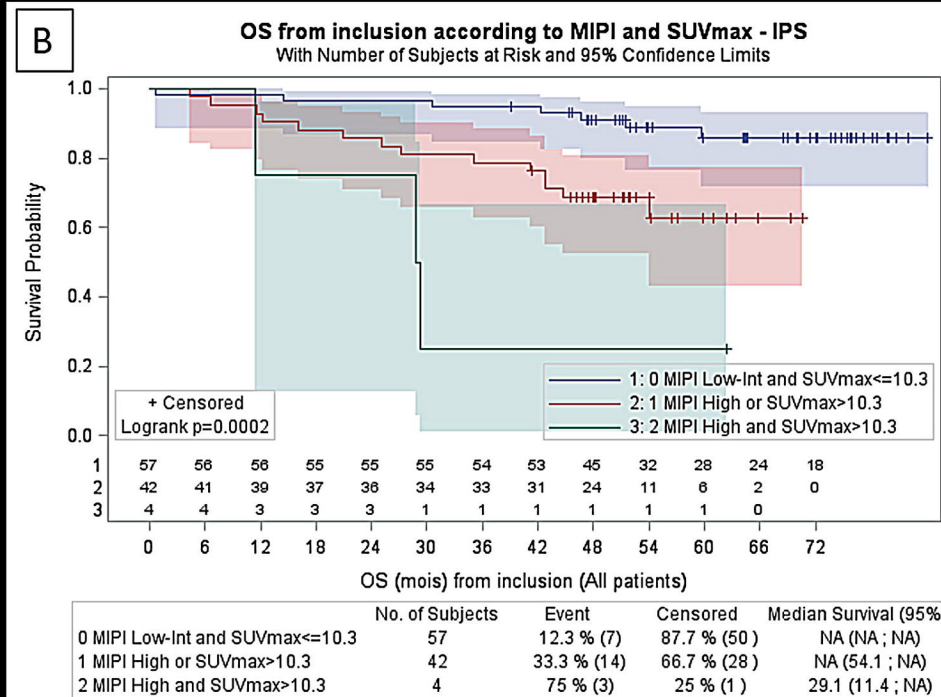
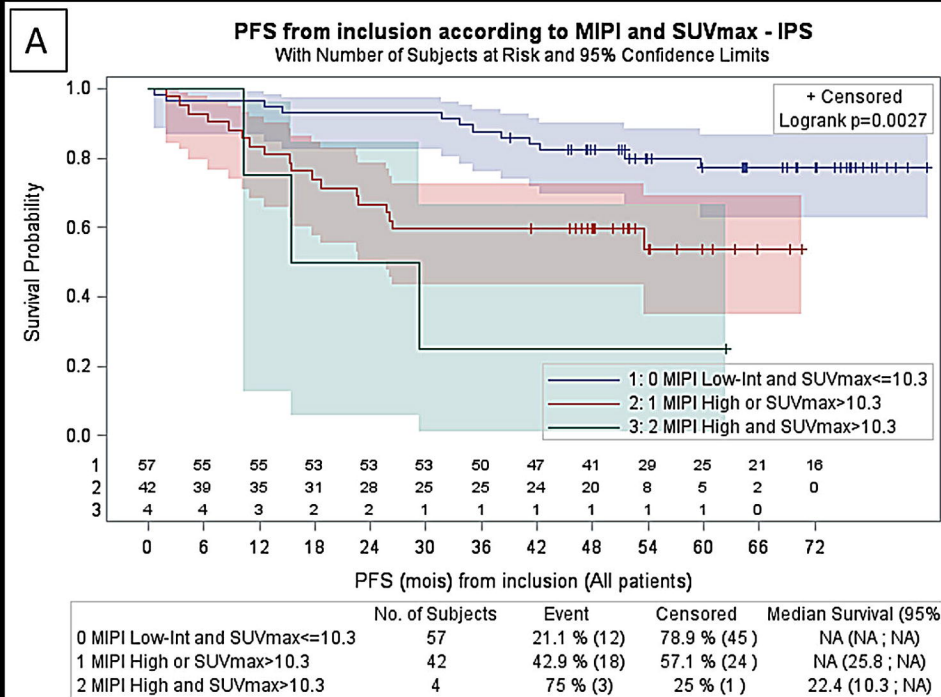
Figure 1-Univariate survival analyses according to metrics threshold

PFS (A) and OS (B) according to SUVmax. PFS (C) and OS (D) according to Metabolic tumor Volume (MTV)-40 %. PFS (E) and OS (F) according to SUVmax gradient.

Figure 2 – Prognostic Index combining MIPI and SUVmax

PFS (A) and OS (B) according to MIP and SUVmax. Combining MIPI and SUV max > 10.3 for intermediate patients defines two risk groups with significantly different PFS (C) and OS (D) survival profiles.





Supplementary Data

Statistics:

At initial staging, FDG-PET results were compared to the status of the disease determined by histology findings (if available), clinical and imaging follow-up. For each of FDG-PET potential metrics, a threshold value was determined using X-tile software (Yale University, New Haven, CT). For visual analysis, three positivity cut-off were studied $DS = 5$, $DS \geq 4$ and $DS \geq 3$. End points studied were PFS and OS, determined by clinical and imaging follow-up. Survival functions were calculated using Kaplan-Meier estimates and comparison between categories was made with the log-rank test. Univariate and multivariable analyses were performed using Cox proportional hazards models. Because survival was significantly prolonged in the RM group in the LyMa population, treatment arm was also considered in this analysis along with other baseline factors (aggressive morphological variants, Ki67>30%, MIPI score). The association between SUVmax at diagnosis and these baseline factors was evaluated using the Fisher's exact test. Only p-values< 0.05 were considered as statistically significant.

Multivariate analysis was conducted by first determining the best baseline model for survival using baseline clinical information (including treatment arm and MIPI score) and FDG-PET measures. Because SUVmax and SUVpeak showed similar prognostic values, we chose to assess FDG-uptake only as measured with SUVmax, this metric being the most widely used. For both PFS and OS, the base model was study arm (Non-randomized vs Obs vs RM), MIPI (Low vs Intermediate vs High) and SUV max (≤ 10.3 vs >10.3). There was no evidence of interaction effects across the three factors. Each metric was added to this model to determine if it provided any additional prognostic value.

Tables:

Table S1-Demographical and baseline characteristics

	LYMA-PET population N=104	LYMA population N=299	Test
Age at inclusion (years)			Wilcoxon
n	104	299	P = 0.523
Missing	0	0	
Median	57.0	57.0	
Min ; Max	41.0 ; 65.0	27.0 ; 65.0	
Sexe			Fisher Exact
Male / Female	78 /26 (75.% / 25%)	236/63 (79%/21%)	P = 0.236
Arm (randomized patients)			Fisher Exact
OBSERVATION	44 (47.8%)	120 (50.0%)	P = 0.691
RITUXIMAB	48 (52.2%)	120 (50.0%)	
LDH			Fisher Exact
N	61 (58.7%)	184 (61.5%)	P = 0.943
> N	40 (38.4%)	108 (36.2%)	
Not done	3 (2.9%)	7 (2.3%)	
Ann Arbor Staging			Fisher Exact
Missing	0	1	P = 0.089
2	4 (3.8%)	18 (6.0%)	
3	16 (15.4%)	31 (10.4%)	
4	84 (80.8%)	249 (83.6%)	
MIPI			Fisher Exact
Low	55 (52.9%)	159 (53.2%)	P = 0.507
Int	32 (30.8%)	82 (27.4%)	
High	17 (16.3%)	58 (19.4%)	

Statistical tests performed between LYMA-PET and Non LYMA-PET populations

Table S2- Description of FDG-PET metrics studied at baseline

N=103	
SUVmax	
Mean (SD)	8.7 (5.0)
Median	7.39
Q1 ; Q3	5.27 ; 11.64
Min ; Max	1.82 ; 33.85
SUVpeak	
Mean (SD)	4.81 (2.59)
Median	4.18
Q1 ; Q3	2.84 ; 6.74
Min ; Max	0 ; 13.96
Metabolic Tumor Volume (cm3)	
Mean (SD)	192.8655 (435.536)
Median	24.39
Q1 ; Q3	9.712 ; 124.890
Min ; Max	0.870 ; 2482.570
Total Lesion Glycolysis (cm3)	
Mean (SD)	820.5 (1667.83)
Median	105.18
Q1 ; Q3	32.93 ; 535.40
Min ; Max	0 ; 9384.41

Table S3- Multivariate survival analyses

Based on the LYMA-PET patient set the best Cox model for PFS includes study arm (Non-randomized vs Observation vs Rituximab), MIPI (Low vs Intermediate vs High) and SUV max (≤ 10.3 vs > 10.3). There was no evidence of interaction effects across the three factors.

Table S3.1 - Cox Model (Arm, SUVmax and MIPI) for PFS

Parameter	Modality tested	Hazard Ratio	95% Hazard Ratio Confidence Limits		Pr>ChiSq
			Lower	Upper	
SUVmax	>10.3	5.415	2.489	11.779	<.0001
MIPI SCORE	High	2.137	0.808	5.652	0.1257
	Int	2.562	1.133	5.796	0.0239
D arm	Non-randomized	17.454	6.539	46.588	<.0001
	RITUXIMAB	0.358	0.134	0.952	0.0395

Model is based on 103 patients (33 with events and 70 censoring).

Table S3.2 - Cox Model (Arm SUVmax and MIPI) for OS

Parameter	Modality tested	Hazard Ratio	95% Hazard Ratio Confidence Limits		Pr>ChiSq
			Lower	Upper	
SUVmax	>10.3	6.318	2.584	15.445	<.0001
MIPI SCORE	High	4.966	1.548	15.934	0.0071
	Int	3.134	1.172	8.375	0.0228
D arm	Non-randomized	10.507	3.784	29.178	<.0001
	RITUXIMAB	0.900	0.304	2.669	0.8499

Model is based on 103 patients (24 with events and 79 censoring).

Table S4- Description of FDG-PET metrics studied after induction therapy and at end of treatment

	Before transplantation N=64	End of Treatment N=44
SUVmax		
Median	1.9	1.9
Range	[0.5-16]	[0.5-24.1]
Δ SUVmax		
Median	- 68%	- 76 %
Range	[-100% - +271%]	[-100% - +17%]
SUVpeak		
Median	1.4	1.4
Range	[0.3-20.3]	[0.4-17.2]
Δ SUVpeak		
Median	69%	-78%
Range	[-95% - +278%]	[-96% - + 13%]
Deauville Score		
1	19 (29.6%)	23 (52.3%)
2	23 (35.9%)	12 (27.3%)
3	8 (12.5%)	6 (16.6%)
4	6 (9.3%)	1 (2.3%)
5	8 (12.5%)	2 (4.5%)

Table S5-Prognostic values (p-value and Hazard Ratios when p-value < 0.05) of metrics derived FDG-PET before transplantation and end of treatment.

		Metrics	Modality	P-value	Hazard Ratio	95% Hazard Ratio Confidence	
						Lower	Upper
Before Transplantation (n=64)	<i>PFS</i>	SUVmax _{IPET}	>6,3	0.0977	3.627	0.789	16.667
	<i>OS</i>	SUVmax _{IPET}	>6,3	0.0199	6.927	1.357	35.351
	<i>PFS</i>	ΔSUVmax _{IPET}	>-29.65%	0.2976	-	-	-
	<i>OS</i>	ΔSUVmax _{IPET}	>-29.65%	0.1089	-	-	-
End of Treatment (n=41)	<i>PFS</i>	SUVmax _{eotPET}	>1,18	0.3879	-	-	-
	<i>OS</i>	SUVmax _{eotPET}	>1,18	0.0708	0.228	0.046	1.134
	<i>PFS</i>	ΔSUVmax _{eotPET}	>-90.88%	0.0209	0.196	0.049	0.781
	<i>OS</i>	ΔSUVmax _{eotPET}	>-90.88%	0.1836	-	-	-