



**HAL**  
open science

# Influenza interaction with cocirculating pathogens and its impact on surveillance, pathogenesis, and epidemic profile: A key role for mathematical modelling

Lulla Opatowski, Marc Baguelin, Rosalind M Eggo

## ► To cite this version:

Lulla Opatowski, Marc Baguelin, Rosalind M Eggo. Influenza interaction with cocirculating pathogens and its impact on surveillance, pathogenesis, and epidemic profile: A key role for mathematical modelling. PLoS Pathogens, 2018, 14 (2), pp.e1006770. 10.1371/journal.ppat.1006770 . inserm-02171126

**HAL Id: inserm-02171126**

**<https://inserm.hal.science/inserm-02171126>**

Submitted on 2 Jul 2019

**HAL** is a multi-disciplinary open access archive for the deposit and dissemination of scientific research documents, whether they are published or not. The documents may come from teaching and research institutions in France or abroad, or from public or private research centers.

L'archive ouverte pluridisciplinaire **HAL**, est destinée au dépôt et à la diffusion de documents scientifiques de niveau recherche, publiés ou non, émanant des établissements d'enseignement et de recherche français ou étrangers, des laboratoires publics ou privés.

REVIEW

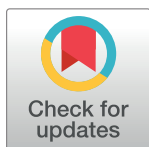
# Influenza interaction with cocirculating pathogens and its impact on surveillance, pathogenesis, and epidemic profile: A key role for mathematical modelling

Lulla Opatowski<sup>1</sup>\*, Marc Baguelin<sup>2,3</sup>, Rosalind M. Eggo<sup>2</sup>

**1** Université de Versailles Saint Quentin, Institut Pasteur, Inserm, Paris, France, **2** London School of Hygiene & Tropical Medicine, London, United Kingdom, **3** Public Health England, London, United Kingdom

\* These authors contributed equally to this work.

\* [lulla.opatowski@pasteur.fr](mailto:lulla.opatowski@pasteur.fr)



**OPEN ACCESS**

**Citation:** Opatowski L, Baguelin M, Eggo RM (2018) Influenza interaction with cocirculating pathogens and its impact on surveillance, pathogenesis, and epidemic profile: A key role for mathematical modelling. *PLoS Pathog* 14(2): e1006770. <https://doi.org/10.1371/journal.ppat.1006770>

**Editor:** Tom C. Hobman, University of Alberta, CANADA

**Published:** February 15, 2018

**Copyright:** © 2018 Opatowski et al. This is an open access article distributed under the terms of the [Creative Commons Attribution License](https://creativecommons.org/licenses/by/4.0/), which permits unrestricted use, distribution, and reproduction in any medium, provided the original author and source are credited.

**Funding:** LO acknowledges funding from the French Government's "Investissement d'Avenir" program, Laboratoire d'Excellence "Integrative Biology of Emerging Infectious Diseases" (grant no. ANR-10-LABX-62-IBEID), and from Région Île-de-France (Domaine d'Intérêt Majeur Maladies Infectieuses). RME and MB acknowledge funding from the National Institute for Health Research through the Health Protection Research Unit in Immunisation at the London School of Hygiene & Tropical Medicine in partnership with Public Health England. The funders had no role in study design, data collection and analysis, decision to publish, or preparation of the manuscript.

## Abstract

Evidence is mounting that influenza virus interacts with other pathogens colonising or infecting the human respiratory tract. Taking into account interactions with other pathogens may be critical to determining the real influenza burden and the full impact of public health policies targeting influenza. This is particularly true for mathematical modelling studies, which have become critical in public health decision-making. Yet models usually focus on influenza virus acquisition and infection alone, thereby making broad oversimplifications of pathogen ecology. Herein, we report evidence of influenza virus interactions with bacteria and viruses and systematically review the modelling studies that have incorporated interactions.

Despite the many studies examining possible associations between influenza and *Streptococcus pneumoniae*, *Staphylococcus aureus*, *Haemophilus influenzae*, *Neisseria meningitidis*, respiratory syncytial virus (RSV), human rhinoviruses, human parainfluenza viruses, etc., very few mathematical models have integrated other pathogens alongside influenza. The notable exception is the pneumococcus–influenza interaction, for which several recent modelling studies demonstrate the power of dynamic modelling as an approach to test biological hypotheses on interaction mechanisms and estimate the strength of those interactions.

We explore how different interference mechanisms may lead to unexpected incidence trends and possible misinterpretation, and we illustrate the impact of interactions on public health surveillance using simple transmission models. We demonstrate that the development of multipathogen models is essential to assessing the true public health burden of influenza and that it is needed to help improve planning and evaluation of control measures. Finally, we identify the public health, surveillance, modelling, and biological challenges and propose avenues of research for the coming years.

**Competing interests:** The authors have declared that no competing interests exist.

## Author summary

Influenza is responsible for major morbidity and mortality burdens worldwide. Mathematical models of influenza virus transmission have been critical to understanding the virus epidemiology and planning public health strategies for infection control. It is increasingly clear that microbes do not act in isolation but potentially interact within the host. Therefore, studying influenza alone may lead to misinterpretation of transmission or severity patterns. Here, we review the literature on bacteria and viruses that interact with influenza, proposed interaction mechanisms, and mathematical modelling studies that include interactions. We report evidence that, beyond the classic secondary bacterial infections, many pathogenic bacteria and viruses probably interact with influenza. Public health relevance of these pathogen interactions is detailed, showing how possible misreading or a narrow outlook could lead to mistaken public health decision-making. We describe the role of mechanistic transmission models in investigating this complex system and obtaining insight into interactions between influenza and other pathogens. Finally, we highlight the benefits and challenges in modelling and speculate on new opportunities made possible by taking a broader view, including basic science, clinically, and for public health.

## Introduction

Influenza virus is a major contributor to the global disease burden, and exploration of its pathogenesis, epidemiology, and evolution has occupied generations of scientists. Its complex seasonality, antigenic drift of surface proteins, wide spectrum of severity, and capacity to cross species and cause epidemics or pandemics are all characteristics that make the virus so difficult to control [1].

The human respiratory tract is an important reservoir of bacteria, fungi, viruses, bacteriophages, archaea, and eukaryotes [2], harboring diverse communities of commensal, opportunistic, and pathogenic microorganisms. It has been suggested that some exist in nonneutral relationships [3], with competition for resources, synergism with the host immune system, or physiological modifications that alter the normal colonization or infection processes. The contribution of species-level interactions to the influenza burden is largely unknown.

In terms of public health, our current understanding of influenza transmission or severity may therefore be incomplete or misguided due to ignorance of the effect of interacting pathogens. On one hand, large-scale influenza vaccination programs may unexpectedly impact other infections due to an indirect rise or fall in the risk of contracting them [4]. For example, if influenza outcompetes another virus and holds it at bay, an influenza vaccination program could result in an upsurge in the competitor. On the other hand, the introduction of measures to control bacterial infections (e.g., pneumococcal vaccines) may decrease the risk of secondary bacterial pneumonia often associated with severe outcomes of influenza.

Seasonal influenza generates a large burden each year during the wintertime in temperate regions and with more complex seasonal patterns in tropical regions [5]. Influenza pandemics frequently occur outside of the usual season and generate an unpredictable and often large burden in morbidity, mortality, and cost [6,7]. This burden has historically been the result of secondary bacterial infections [8,9]. Lung specimens from 1918 to 1919 influenza fatalities were found to be, in more than 90% of cases, positive for at least one bacterium [10]. Bacteriologic and histopathologic results from published autopsy series also suggest that deaths from

the 1918 influenza pandemic mostly resulted from pneumonia with *Streptococcus pneumoniae*, *Haemophilus influenzae*, *Staphylococcus aureus*, and *Streptococcus pyogenes*, multiple infections being common [10]. Deaths during the 1957 and 1968 pandemics were less closely related to bacterial pneumonia [10]. Because emergence and circulation of pandemic influenza take place out of season, and therefore in different climatic and ecological milieus than seasonal strains, pandemic strains may encounter different coinfecting pathogens. It is therefore critically important to pandemic preparedness to understand competitive and synergistic relationships with other species, both at the individual level from a clinical perspective or at a population level from an epidemiological perspective. It is vital to improve our understanding and control of transmission and the risk of developing disease on infection.

Mathematical modelling has been a key tool in infectious diseases for many years, allowing researchers to probe the complex intricacies of transmission and play forward the effects on an individual to see the impact on population-level infection dynamics [11]. Counterfactuals, or ‘what if’ scenarios, can easily be tested and compared, where vaccination rates, contact patterns, health behaviours, or any number of other factors are varied, to assess impact.

Models of influenza virus transmission have proved very useful in expanding knowledge of influenza biology, evolution, and epidemiology. For example, models of evolutionary change and immunity aim to predict the dominant strain of influenza in the coming season [12]. Spatially explicit models have convincingly linked commuting movements to the spread of influenza in the United States [13]. Models have also been crucial to public health, contributing to the optimization of control strategies, including the use of vaccines and antivirals [14–20]. As the modelling field has developed, there has been an effort to improve realism by incorporating heterogeneity in human contact patterns, age-related susceptibility, cross immunity after previous infections [19,21–24], and the potential effect of environmental variables on transmission [13,25]. Notably, the vast majority of modelling work has neglected the microbial environment: most mathematical and computational models of influenza are focused on single or sequential influenza infections and have broadly simplified pathogen ecology. For example, despite secondary bacterial infections being recognized as an important cause of mortality, models have not been exploited to estimate the indirect effect of seasonal influenza vaccination on the incidence of severe bacterial infections in the elderly. Furthermore, modelling used to plan vaccine interventions during the 2009 pandemic in the United Kingdom considered influenza transmission alone [26].

The authors of relatively recent literature reviews gathered biological and epidemiological evidence for interactions between influenza virus and respiratory bacteria or viruses [3,27,28] but did not consider mechanistic transmission models. Mathematical models make it possible to investigate mechanisms of interaction and visualize the pathological and epidemiological patterns that result from them. Comparison of model outputs to data enables estimation of both the probability of such interactions and the strength of the interaction. Estimation can be made across geographic regions (e.g., winter seasonal vs year-round transmission), for different virus subtypes (e.g., seasonal vs pandemic), and in different age groups (e.g., infants vs elderly). Computational and mathematical models to study influenza with other respiratory pathogens are currently underutilized.

In this article, we report evidence of interaction of influenza with other pathogens and systematically review modelling studies on influenza coinfection. Our aim is to build a case for a more expansive use of mathematical models including influenza with other pathogens. For this, we address how different interference mechanisms might lead to unexpected epidemiological patterns and misinterpretations, identify public health needs, identify modelling and biological challenges, and propose avenues of research for the future.

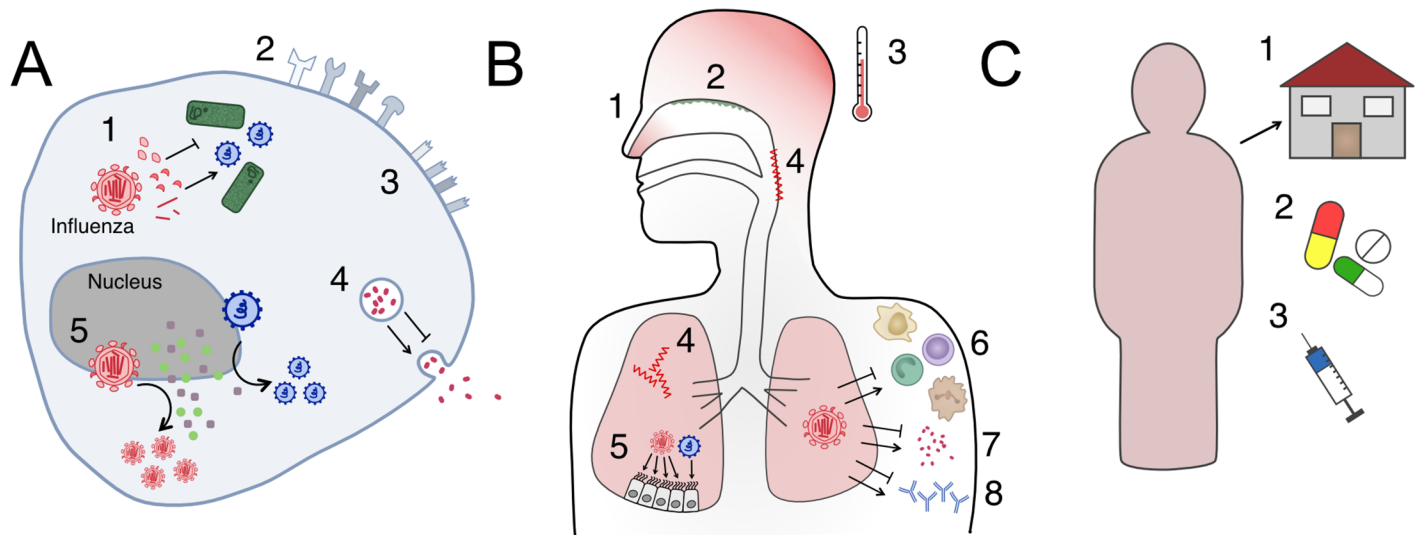
## Mechanisms of interaction

Here, ‘interaction’ refers to any process by which infection caused by one pathogen affects the probability, timing, or natural history of infection by another. This process includes a wide range of mechanisms that can involve direct connections between the two pathogens, e.g., at the cellular level, or indirect interactions through an intermediate factor that influences the other. The indirect consequences of these interactions are described later. For influenza virus, interactions with bacterial or viral species can occur at several scales (Fig 1). Interacting pathogens may have two distinct profiles: natural human commensals—usually bacteria—which cause mainly asymptomatic carriage or mild symptoms often for long durations of weeks to months, or epidemic pathogens causing infection for shorter durations, from a few days to a few weeks. These two distinct epidemic profiles potentially involve different modes of interaction and lead to different levels of consequences. Here, we detail proven and potential interaction mechanisms (Fig 1).

### Within-host interactions

At the cellular level, interactions involve both direct and indirect mechanisms. First, influenza genes or gene products can enhance or inhibit the replication of other viruses or potential infection by bacteria by direct interaction with pathogen proteins or nucleic acids [29]. Furthermore, indirect competition for host resources can occur, when pathogens compete for target cells, receptors, or cellular products required for replication. Influenza-infected cells may also release cell signalling molecules that could increase or decrease the probability of coinfection.

During infection, influenza virus impairs innate and adaptive host defences [30,31]. Mechanisms include altered neutrophil recruitment and function, leading to defective bacterial clearance, diminished production of alveolar macrophages [32], and inhibition of T cell-mediated



**Fig 1. Influenza interactions with other pathogens occur within host or at the population level.** Each interaction could either inhibit or enhance coinfection, depending on the combination of pathogens. (A) Cellular-level interactions: (1) direct interactions between viral products; (2) altered receptor presentation; (3) cell damage, e.g., its surface receptors; (4) modification of release of immune system mediators; (5) competition for host resources among influenza and other pathogens. (B) Host-level interactions: (1) change of transmissibility due to symptoms; (2) individual variation in commensal microbiota; (3) effect of symptomatic responses to infection; (4) tissue damage, e.g., in the nasopharynx or lung; (5) competition for host resources, e.g., target cells for infection; (6) immune cell-mediated interaction; (7) immune signalling-mediated interaction; (8) antibody-mediated interaction. (C) Population-level interaction: (1) behavioural responses to disease; (2) medication use; (3) vaccination behaviour. Bacterial interaction mechanisms include A1–5, B1–4 and 7, C1–3. Viral interaction mechanisms include A1–2 and 4–5, B1–3 and 4–8, C1–3.

<https://doi.org/10.1371/journal.ppat.1006770.g001>

immunity [31]. Infection with a second virus could be modulated similarly, e.g., by the production of cross-reactive antibodies or cell-mediated immunity that prevents or facilitates this infection. Physiological changes induced by the host response to infection have consequences on other pathogens. For instance, lung tissue damage [32] and the induction of type-1 interferon signalling were shown to promote bacterial colonization [31] and broadly inhibit viral replication [33]. Damage to lung cells caused by influenza infection, such as influenza neuraminidase stripping sialic acids from the cell surface, amplifies bacterial adherence and invasion [27] and could potentially change the likelihood of infection by another virus. Symptomatic responses to infection, like fever, have also been shown to act as ‘danger signals’ for bacteria, e.g., meningococci, which react by enhancing bacterial defences against human immune cells [34]. In contrast, fever may diminish viral replication rate, thereby lowering the probability of coinfection. From the other side, the ‘influenza preinfection’ respiratory flora of individuals may also partially account for the variability of severity and outcome [28]. For example, *Staphylococcus aureus* colonization was shown to trigger viral load rebounds and reduce influenza virus clearance in animal studies [35–37].

### Population-level interactions

Human behavioural responses to influenza infection can also indirectly impact transmission of bacteria or other viruses. For example, people with severe influenza symptoms are likely to stay home, modifying their contact patterns and making acquisition of second infections unlikely [38,39]. On the other hand, individuals with milder symptoms may maintain their regular activities, which could increase bacterial transmission to other individuals (as observed for tuberculosis [40]) or increase the chance of acquiring a second infection. Person-to-person variation in care seeking and medication use, such as antivirals, antibiotics, antipyretics, or vaccine(s) uptake, also influences the risk of coinfection. For example, use of the pneumococcal conjugate vaccine has decreased carriage of the pneumococcal vaccine strains in some contexts [41,42], and vaccination against *H. influenzae* type b has decreased carriage of the bacteria [43,44]. These vaccination campaigns may therefore decrease the chance of observing influenza–bacteria coinfections.

### Evidence of interaction

Several literature reviews have described evidence of interactions between influenza and other respiratory bacterial or viral pathogens [3,27]. In this section, we briefly summarize the viral and bacterial species with evidence for interaction with influenza in recent laboratory and epidemiological studies (details on the search strategies are provided in [S1 Appendix](#), section A).

### Influenza–bacteria interactions

Experimental results suggest that most of the pathogenic and commensal bacteria in the nasopharynx may directly or indirectly interfere with influenza infection during host colonization or infection ([Table 1](#)). The best-studied influenza–bacteria interaction is with *Streptococcus pneumoniae* [3]. Influenza is thought to increase bacterial adherence and facilitate the progression from carriage to severe disease [28,45], although evidence from population studies is not so clear-cut [46–49]. Influenza was also shown to impair methicillin-resistant *Staphylococcus aureus* (MRSA) clearance in coinfecting mice, thereby increasing their susceptibility to MRSA infection [50]. Similarly, in mice, increased severity of *H. influenzae* induced by influenza was suggested, based on experiments of sequential infection with sublethal influenza then *H. influenzae* doses [51]. Notably, ecological studies revealed a positive association between influenza and *Neisseria meningitidis* incidence [52] and in vitro studies suggested that direct interaction



**Table 1. Bacteria whose colonization or infection course may be affected by interaction with influenza.**

Bacterial species	Study system	Effect	Illustrative publications
<i>S. pneumoniae</i>	Animal	Synergistic/ Facilitating	Smith 2013 [97]; Wolf 2014 [137]; Siegel 2014 [138]; McCullers 2010 [139]; Ghoneim 2013 [32]; Peltola 2006 [140]; Walters 2016 [141]; Nakamura 2011 [142];
	Human	Synergistic/ Facilitating	Walter 2010 [143]; Nelson 2012 [144]; Opatowski 2013 [102]; Shrestha 2013 [107]; Weinberger 2013 [89]; Jansen 2008 [145]; Kuster 2011 [146]; Nicoli 2013 [88]; Ampofo 2008 [147]; Grabowska 2006 [148]; Murdoch 2008 [149]; Edwards 2011 [150]; Weinberger 2014 [151]; Grijalva 2014 [152];
		Neutral/Unclear	Kim et al. 1996 [47]; Watson 2006 [48]; Toschke 2008 [49]; Zhou 2012 [153]; Damasio 2015 [154]; Hendricks 2017 [91]
<i>S. aureus</i>	In vitro and Animal	Synergistic/ Facilitating	Niemann 2012 [155]; Davison 1982 [156]; Tashiro 1987 [37]; Zhang 1996 [157]; Chertow 2016 [158]; Sun 2014 [50]; Braun 2007 [35]; Iverson 2011 [159]; Robinson 2013 [160]
	Human	Synergistic/ Facilitating	Sherertz 1996 [161]; Hageman 2006 [162]; Finelli 2008 [163]; Reed 2009 [164]
		Neutral	Kobayashi 2013 [165]
<i>H. influenzae</i>	Animal	Synergistic/ Facilitating	Lee 2010 [51]; Michaels 1977 [166]; Bakaletz 1988 [167]; Francis 1945 [168]
	Human	Synergistic/ Facilitating	Morens 2008 [10]
<i>N. meningitidis</i>	In vitro and Animal	Synergistic/ Facilitating	Rameix-Welti 2009 [53]; Loh 2013 [34]
		Neutral	Read 1999 [169]
	Human	Synergistic/ Facilitating	Cartwright 1991 [170]; Hubert 1992 [52]; Jacobs 2014 [171]; Brundage 2006 [172]; Jansen 2008 [145]; Jacobs 2014 [171]; Makras 2001 [173]
<i>M. tuberculosis</i>	Animal	Synergistic/ Facilitating	Florida 2015 [174]; Florida 2013 [55]; Volkert 1947 [175]; Redford 2014 [176]
	Human	Synergistic/ Facilitating	Walaza 2015 [177]; Oei 2012 [178]; Noymer 2011 [179]; Noymer 2009 [180]; Zurcher 2016 [181]
		Neutral	Roth 2013 [182]
<i>S. pyogenes</i>	Animal	Synergistic/ Facilitating	Klonoski 2014 [183]; Okamoto 2003 [184]; Okamoto 2004 [185]; Hafez 2010 [186]
	Human	Synergistic/ Facilitating	Scaber 2011 [187]; Zakikhany 2011 [111]; Tasher 2011 [188]
		Neutral	Tamayo 2016 [189]

<https://doi.org/10.1371/journal.ppat.1006770.t001>

between influenza A neuraminidase and the *N. meningitidis* capsule enhanced bacterial adhesion to cultured epithelial cells [53]. Lastly, in patients with pulmonary tuberculosis, there is evidence of increased risk of severe outcomes on influenza infection [54]. This finding was supported by experiments in mice [55] that demonstrated that *Mycobacterium tuberculosis* and influenza coinfecting mice mounted weaker immune responses specific to *M. bovis* Bacillus Calmette–Guerin (BCG) in the lungs compared with mice infected with BCG alone.

### Virus–virus interactions

Within its family, influenza interacts between types (A and B), subtypes (e.g., H3N2, H1N1), and strains. Competitive exclusion due to homologous immunity is widely accepted [56,57] and has been applied extensively in models of influenza strain coexistence [58,59]. Antigenic change (measured through antigenic distance) occurs constantly in influenza, strongly indicating that the virus escapes from immunity resulting from prior infection by genetic change [60]. Interestingly, there is mounting evidence that the first influenza infection is important and may affect severity of future infections [61–63]. Some evidence also supports the finding that influenza can interact with other influenza viruses and noninfluenza respiratory viruses via nonspecific immunity following infection [64,65].

**Table 2. Viruses that may be affected by interaction with influenza.**

Virus	Study system	Effect	Illustrative publications
RSV	Population incidence	Competitive	Anestad 2007 [190]; Anestad 2009 [191]; Casalegno 2010 [77]; Anestad 1987 [192]; Yang 2012 [79]; Nishimura 2005 [193]; Glezen 1980 [76]; Pascalis 2012 [83]; Yang 2015 [67]; van Asten 2016 [194]; Meningher 2014 [195]; Velasco-Hernandez 2015 [117]
		Neutral	Navarro-Mari 2012 [68]
	Coinfection detection	Competitive	Greer 2009 [84]; Martin 2013 [196]
	Laboratory investigation	Competitive	Shinjoh 2000 [197]
Rhinovirus	Population incidence	Competitive	Casalegno 2010 [66]; Casalegno 2010 [77]; Pascalis 2012 [83]; Linde 2009 [198]; Anestad and Nordbo [199]; Cowling 2012 [65]; Yang 2015 [67]
		Neutral	Yang 2012 [79]; Navarro-Mari 2012 [68]; van Asten 2016 [194]
	Coinfection detection	Competitive	Tanner 2012 [200]; Mackay 2013 [201]; Nisi 2010 [86]; Greer 2009 [84]; Martin 2013 [196]
	Laboratory investigation	Competitive	Pinky and Dobrovolny 2016 [112]
Influenza	Population incidence	Competitive	van Asten 2016 [194]
	Coinfection detection	Competitive	Nisii 2010 [86]; Sonoguchi 1985 [56]
	Laboratory studies	Competitive	Easton 2011 [202]; Laurie 2015 [57]
HPIV	Population incidence	Competitive	Yang 2012 [67]; Anestad 1987 [192]; Yang 2015 [67]
		Neutral	Mak 2012 [78]
	Coinfection detection	Competitive	Pascalis 2012 [83]
		Neutral	Murphy 1975 [85]; Nisii 2010 [86]; Greer 2009 [84]; Martin 2013 [196]
Laboratory investigation	Synergistic/ Facilitating	Goto 2016 [203]	

Abbreviations: HPIV, human parainfluenza virus; RSV, respiratory syncytial virus.

<https://doi.org/10.1371/journal.ppat.1006770.t002>

Many noninfluenza viruses are also suspected of interfering with influenza virus acquisition, based on different types of studies (Table 2). During the 2009 influenza pandemic, Casalegno et al. reported that in France, the second pandemic wave was delayed due to the September rhinovirus epidemic [66], although this shift was not observed in other countries [67,68] and may have been affected by variable reporting rates. Coinfection by the two viruses might also enhance disease severity for individuals [69–71], although evidence is discordant [72–74]. Similarly, competitive interaction with respiratory syncytial virus (RSV) has been posited for many years [75,76], and some evidence was found for delayed RSV epidemics due to the second wave of the 2009 pandemic in France [77] and tropical regions [78,79]. There is discrepancy in the findings of interaction between influenza and RSV; while most studies found increased severity [74,80,81], others found no effect [69] and some found less severity [82]. Competitive interaction with parainfluenza viruses was also inferred, based on less frequent coinfection pairs than expected [83], but that observation is not consistent across studies [84–86]. In terms of severity, parainfluenza and influenza coinfection is usually more severe than influenza alone [69,71,87] but not always [72,73].

The general pattern is that bacteria tend to synergize with influenza, often boosting transmission of either pathogen or increasing invasion of the bacteria following influenza infection. It is not always clear whether this is a true synergy—in which both pathogens benefit—or rather that influenza facilitates bacterial invasion. In contrast, viral pathogens tend to form



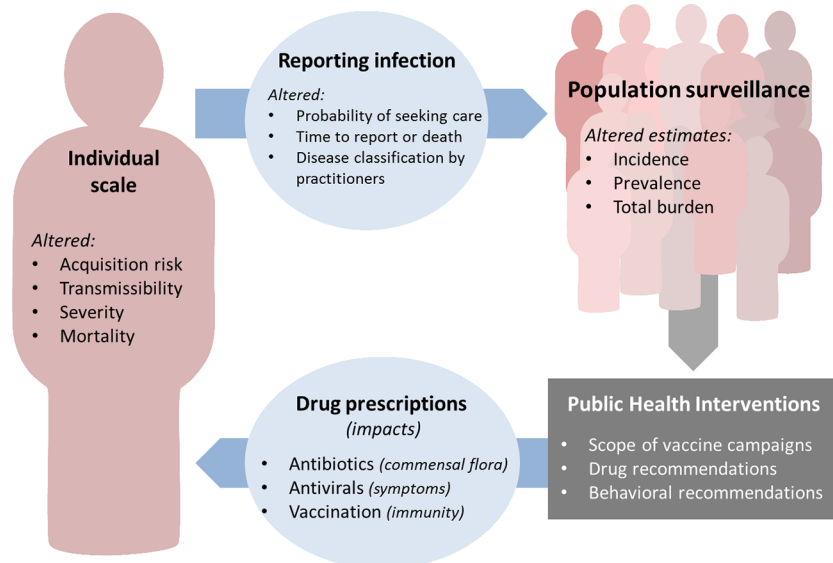
competitive interactions with influenza, although whether these are direct, specific interactions with particular other viruses or the result of an ‘early advantage’ to the first infector remains unclear. This pattern may occur because of the differing natural histories of bacteria and viruses; while the former tends to infect hosts for long time periods, the latter has shorter infections more similar to the natural history of influenza itself. This is a complex system in which each host–pathogen or pathogen–pathogen interaction phenomenon may impact the others. Surprisingly, however, such interactions remain poorly studied and, in particular, very few modelling studies have addressed these questions.

### Impact of interactions at the population level

Although coinfections occur at the host level, their consequences are far-reaching (Fig 2). Coinfection may alter the natural history, severity, or timing of illness in an individual and thereby modify the morbidity, healthcare-seeking behaviour, and treatment of that individual. Heterogeneity in these can affect the probability of, and timing of, reporting disease, thereby transferring the effect from individual hosts to the population level.

Development and implementation of public health policies rely on analyses of population surveillance data on influenza epidemics and burden. Policies then generate changes in medical interventions at the population level, e.g., change in vaccination targets, or at the individual level, e.g., recommendations for antibiotics or antivirals in certain groups. These public health interventions then have their own impacts on the dynamics of pathogens and coinfections. Therefore, because coinfections may alter surveillance data, and policies based on evidence from surveillance data may alter coinfection or interference risk, there is a complex cycle of dependence, which highlights the difficulty—as well as the potential importance—of assessing the impact of coinfections (Fig 2).

To date, most of the published quantitative analyses of interactions rely on statistical association between incident cases of influenza-like illness (ILI) and other infections based on



**Fig 2. Cycle of factors affected by nonneutral interactions at the individual level and their impact on influenza surveillance, treatment, prevention, and control.** Factors that affect coinfection on an individual scale can feed forward to an effect on population surveillance through their effects on the reporting of infection. Decisions on public health interventions are made in response to population-level data. These interventions then take effect at the individual level, to give a feedback loop both generated and impacted by effects of coinfection.

<https://doi.org/10.1371/journal.ppat.1006770.g002>

regression and correlation analyses [88,89]. A major methodological challenge of detecting interactions is that significant correlation between epidemics of two pathogens in surveillance data may result from either a true biological direct or indirect interaction or may be confounding as a result of the two pathogens sharing common ecological conditions (e.g., cold weather). Regression models describe simple functional links between, for example, the incidence time series, onset or peak time, or epidemic magnitude or severity. Despite their apparently simple formulation, they rely on strong statistical assumptions on the shape of the data and the association [90]. Regression models are also used to calculate correlations between reported time series at different time lags. When properly controlled for confounding variables, they have proved very useful tools to detect signals of associations. Other methods have been proposed through the deployment of seasonal autoregressive integrated moving average (SARIMA) models to analyse time series [91], Granger causality [92,93], or seasonality patterns [94]. However, these models do not formalize the transmission process or biological mechanism of interaction, so the interaction mechanism cannot be determined nor the strength of interaction quantified. Furthermore, this lack of mechanistic formulation prevents easily interpretable predictions that are required to support public health decision-making.

Due to the complex phenomena and many feedback loops, mechanistic models are needed to dissect the cause and effect of the different components (Box 1) [95]. The role of modelling

### Box 1. Mathematical modelling definitions

**Mathematical versus statistical models:** A **mathematical model** (or **transmission or mechanistic model**) is a mechanistic description by mathematical equations of how the number of infected entities changes over time. For example, a mathematical model of transmission between people might explicitly track the number of infected people and describe how many contacts they make, how often these contacts lead to transmission, and how this is affected by temperature. Depending on the scale of the model, entities can be cells, individuals, or groups of individuals (e.g., a household, a city). **Statistical models** do not include a mechanistic link between quantities but only rely on an observed association, often in the form of a probability distribution. So, in the case of the statistical model, you might say that you see more cases when the temperature is low, without explicitly explaining why.

**Individual-based model versus compartmental models:** **Individual-based models** (or **agent-based models**) include a description of the properties (e.g., age, immune status, risk factors) of each of the individuals in the studied population. In contrast, **compartmental models** group individuals with similar characteristics together into compartments and look at relationships between these compartments. The most famous compartmental in epidemiology is the SIR model, based on three compartments, Susceptible-Infectious-Recovered, which is the basis of most of the existing models of pathogen transmission. Compartmental models are easier to fit to data (see next section) and interpret. Individual-based models are more flexible when it is important to integrate a wide range of characteristics of the population but are comparatively slow to implement and run, more difficult to interpret, and require good data on each characteristic that is modelled.

**Model fitting:** Models are built around a structure (the mechanisms), which is modulated by parameters governing the rates of change between compartments, disease states, behaviours, etc. Historically, parameters have been estimated using results from studies

published in the literature. In recent years, with the increased availability of epidemiological data, modelers try whenever possible to fit the model to data (also called **parameter inference** or **calibration**). For this, they use algorithms that explore ‘parameter space’, which is the set of all possible values for parameters, and retain sets of parameters that explain the observed data best. Fitting can be computationally intensive if the model includes many parameters. More efficient fitting algorithms allow fitting of more complex models and thus the study of potentially more interaction mechanisms.

is two-fold: first, mathematical modelling provides a common language to integrate heterogeneous mechanisms and test competitive hypotheses. By doing so, models contribute to building basic knowledge about infection processes. Second, modelling enables assessment of potential intervention scenarios by predicting their impact.

For these reasons, public health interventions based on modelling of infectious diseases have become informative and effective. For example, in the UK, a transmission model fitted to a vast range of ILI and influenza surveillance data demonstrated that vaccinating children against influenza will have the same protective effect on people over 65 years old as vaccinating those individuals [96]. This outcome is a consequence of the diminished community transmission that results from reducing infections in children. Such an impact would be impossible to identify without mechanistic models. [Box 2](#) summarises the potential benefits of coinfection transmission models.

## Box 2. Benefits of coinfection transmission models

- Allow causal relationships to be drawn from the data by testing hypotheses regarding interaction mechanisms
  - For example, using models to analyse the cellular dynamics observed in vivo in mouse coinfection experiments, it is possible to design models of hypothesised immunological pathways and determine which most closely fits observed patterns [97].
- Evaluate contributions to influenza burden with more precision
  - For example, year-to-year influenza epidemics have a different estimated reporting fraction. A model could be used to determine whether coinfection or concurrent epidemics of other viruses are the reason for an increased (or decreased) probability of reporting infection.
- Predict or project incidence of coinfections, including during pandemics
  - For example, fitting multipathogen models to respiratory virus surveillance data would allow quantitative assessment of the hypothesis that during the 2009 pandemic, influenza affected the timing of rhinovirus, RSV, and influenza by competition [66,77].
- Optimize prevention and control of influenza infections and their complications

- For example, a model of influenza and pneumococcal pneumonia could determine optimal target groups for pneumococcal vaccination, based on both the bacterial carriage rates in each age group and the expected influenza vaccination rates in those age groups.
- Estimate the costs and benefits of intervention strategies
  - For example, a model-based analysis of in vitro experimental data could allow assessment of the impact of early antiviral or antibiotic treatment on probability of pneumococcal invasion [98,100]. Combined with population, it would be possible to assess the impact on secondary bacterial infections.

## Models of influenza interactions

Despite mounting evidence of influenza–bacteria interactions and the concurrent increasing use of dynamic modelling to study infectious diseases in recent decades, influenza interactions have rarely been modelled. Interestingly, previous literature reviews describing evidence of interactions between influenza virus and other respiratory bacterial or viral pathogens neglected mathematical models that, despite their limited number, provide insight into mechanisms of interaction and their consequences [3,27]. We have systematically reviewed the literature for models incorporating influenza with bacteria or noninfluenza viruses (details on the search strategies are provided in [S1 Appendix](#), section A).

### Influenza–bacteria interaction

The only influenza–bacterium interaction that has been integrated into mathematical modelling studies is the influenza–pneumococcus system, both within host and at the population level.

Several dynamic models of coinfection at the cellular level were proposed relatively recently [97–101]. In a study combining modelling and empirical data from mice coinfecting with two different influenza viruses and two pneumococcus strains, Smith et al. assessed the likelihood of different immunological interaction mechanisms [97]. They found a role of macrophage dysfunction leading to an increase of bacterial titres and increased virus release during coinfections [97], although their results suggest that coinfection-induced increase of bacterial adherence and of infected cell death were not very likely. Shrestha et al. used an immune-mediated model of the virus–bacterium interaction in the lungs to specifically quantify interaction timing and intensity [98]. They assumed that the efficiency of alveolar macrophages, which are a critical component of host immunity against bacterial infections, was reduced by viral infection and tested the impact of inoculum size, time of bacterial invasion after influenza infection, and the potential impact of antiviral administration. The model predicted that enhanced susceptibility to invasion would be observed four to six days after influenza infection, suggesting that early antiviral administration after influenza infection (<4 days) could prevent invasive pneumococcal disease. Smith and Smith modelled a nonlinear initial dose threshold, below which bacteria (pneumococcus) declined and above which bacteria increased. Using data from mice experiments, they showed that this threshold was dependent on the degree of virus-induced depletion of alveolar macrophages. Because macrophage depletion varies through the course of influenza infection, this important finding may explain why risk of bacterial invasion also changes over the course of infection, with particularly low dose requirement in the first few days of infection [99]. In a follow-up study, the same authors analysed published data

from influenza–pneumococcus coinfecting mice treated with antiviral, antibiotic, or immune modulatory agents. They found that antivirals are more efficient at preventing secondary infection when used in the first two days of influenza infection and also found an important benefit of immunotherapy, especially for low bacterial loads [100]. Lastly, in a within-host model, Boianelli and colleagues investigated the efficacy of different oseltamivir treatment regimens in influenza–pneumococcus coinfecting individuals using parameters drawn from human and mouse studies. They found that increasing the dose of oseltamivir, but not duration of treatment, might increase both its antiviral and antibacterial efficacy [101].

At the population level, there have been several models to assess influenza interactions with bacteria and test hypotheses regarding the main mechanisms [102–106]. The comparison of pneumococcal transmission models to analyse time series of pneumococcal meningitis and viral respiratory infections in France highlighted two important processes in colonized individuals: (1) a virus-related increase in pneumococcal pathogenicity and (2) an enhanced between-individual transmissibility of bacteria [102]. Models of transmission of bacterial pneumonia fitted to US data also highlighted significant interactions, mainly due to influenza-associated increase of individual risk of pneumonia [103,107]. Recently, in a simulation study, Arduin et al. used a flexible individual-based model of influenza–bacteria interaction to assess the population consequences and associated burden of a range of pneumococcus–influenza interaction mechanisms [108]. Population dynamic models have also been used to test the public health impact of control measures [104–106]. Different strategies of antibiotic use (as treatment or prophylaxis) and of vaccination were assessed by modelling the dual transmission of pneumococcus and influenza [104]. For a 1918-like pandemic, this model suggested that widespread antibiotic treatment of individuals with pneumonia would significantly lower mortality, whereas antibiotics in prophylaxis would effectively prevent pneumonia cases. A different model evaluated the benefit of vaccinating the UK population against pneumococcus in the context of pandemic influenza using different scenarios: 1918-like, 1957/1968-like, or 2009-like virus [105]. This indicated that pneumococcal vaccination would have a major impact only for a pandemic with high case fatality and secondary pneumococcal infection rates (e.g., the 1918-like), with less influence in other scenarios.

## Viral interaction

Influenza–influenza interactions predominate in models of two viruses, with limited investigation of influenza–RSV interactions and no models of other viruses.

Within host, several models of multistrain influenza infections were proposed [109–111], especially examining the interval before the secondary infection. One model of RSV–influenza interaction at the cellular level explored the hypothesis of the viruses interacting through competition for resources within the cell [112]. This indirect competition was sufficient to explain the observed rate of virus replication. The model also explored how the speed of virus replication confers an advantage to the first infecting pathogen and determined the ‘head start’ on infection that the slower-replicating virus would require to maintain dominance.

Population models have been used extensively to examine the dynamics of influenza and multi-strain influenza systems (for a review see [113]) although many fewer studies examined multispecies systems. Because the influenza virus comprises two types, multiple subtypes, and potentially numerous strains of each, many viruses may be circulating at any given time, providing varying degrees of cross-protection after recovery and sometimes with complex dynamics of within-species strain replacement due to genetic drift or reassortment. There is evidence of competition between strains, with some models requiring short periods of heterologous immunity after infection to create the ladder-like phylodynamic structure of influenza viruses [114], although recent

studies could capture this feature without this mechanism [58]. One comprehensive early model tested four mechanisms of interaction between influenza types using data from Tecumseh, Michigan, but the data were insufficient to distinguish the mechanisms [115]. Influenza–influenza models must also account for the complex immune history of hosts, related to which there is mounting evidence that the timing of an individual’s influenza encounters, and especially the first infection, shapes their future response [61–63]. The methods for modelling influenza–influenza interactions should be extended into interactions with other viruses.

One model for pandemic influenza, in which coinfection with other respiratory pathogens leads to enhanced influenza transmission, was proposed to explain the multiple waves of the 1918 influenza pandemic in the UK [116]. A recent example of influenza and RSV cross-species analysis in a climatically driven model provided some evidence that RSV dominates influenza, but the model was not explicitly fitted to data [117].

### Illustration from a simple model

To demonstrate how both synergistic and competitive interactions can be modelled, we used a simple transmission model and simulated the effect of interactions (Box 3, Figs 3 and 4 and S1

#### Box 3. A simple model of interaction

The simple model in Fig 3 tests two interaction mechanisms: increased (or decreased) infectiousness on coinfection and decreased (or increased) probability of coinfection occurring. These are the two most commonly suggested mechanisms, the first of the ‘bacterial type’ and the second of the ‘viral type’ (Fig 4).

In Fig 3, all individuals start in the Susceptible (S) class and move to the Infectious classes when they are infected by either pathogen 1 ( $I_1$ ) or 2 ( $I_2$ ).

Infected (and infectious) compartments are shown in colour, where red is infectious with pathogen 1, blue marks infectious with pathogen 2, and infected and infectious with both pathogens in purple. Infection rates are given by the four forces of infection ( $\lambda_1, \lambda_2, \lambda_{12}, \lambda_{21}$ ). After being infected by one pathogen, individuals can either be coinfecting by the other pathogen and move to the coinfection compartments in purple ( $I_{12}$  or  $I_{21}$ ), or they can recover at rates  $\gamma$  and move to the Recovered compartments ( $R_1$  and  $R_2$ ). Coinfected individuals ( $I_{12}$  and  $I_{21}$ ) recover and remain in the doubly recovered compartments,  $R_{12}$  and  $R_{21}$ . Individuals in  $R_1$  or  $R_2$  are subject to force of infection  $\lambda_2$  or  $\lambda_1$ , respectively, i.e., of the pathogen they have not yet had. On infection with the other pathogen, they move to the consecutive infection compartment ( $C_{12}$  or  $C_{21}$ ). After recovery, those individuals move to the doubly recovered compartments ( $R_{12}$  and  $R_{21}$ ).

Parameters  $\beta_1$  and  $\beta_2$  are the baseline transmissibility of pathogen 1 and 2, respectively. There are four interaction parameters modulating the pathogen’s transmissibility:  $\sigma_1$  and  $\sigma_2$  are the change in infectiousness of coinfecting classes, where a value less than 1 makes the coinfecting class less infectious, and a value greater than 1 means coinfecting individuals are more infectious. Parameters  $\delta_1$  and  $\delta_2$  alter the probability of acquisition of a second infection following a first infection, where a value less than 1 makes coinfection less likely, and a value above 1 makes it more likely.

Details on the model equations and computer code generating the trajectories are given in S1 Appendix, section B and S1 Code.



Appendix, section B). We show how these interactions occurring at the individual level can impact the epidemics at the population level. The ‘bacterial type’ interaction firstly shows an increase in bacterial prevalence when influenza infection increases bacterial transmission, in a facilitative interaction. In a synergistic interaction, where coinfection increases transmission of both influenza and bacteria, prevalence of bacteria increases, and the epidemic of influenza has a quicker and higher peak. In the ‘viral type’ competitive interaction, progressively decreasing the probability that a second pathogen can infect an already infected host causes the epidemic peaks to separate in time. It also decreases the peak size of the outcompeted pathogen without altering the number of people infected in total (Fig 4).

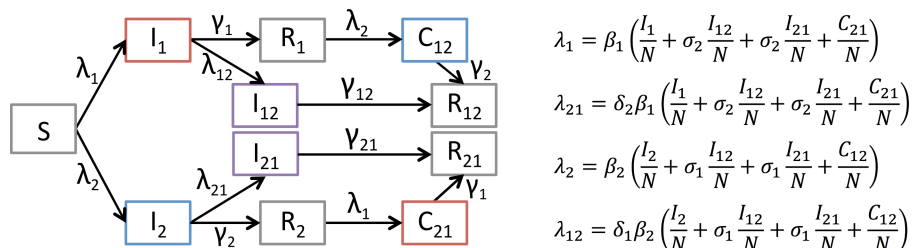
### Limits of the current view

Historically, scientific and medical studies have tended to focus on host–pathogen interactions in an independent manner by studying each pathogen alone. We highlighted here, as others [3,27, 28], that many respiratory viruses and bacteria have been linked to influenza epidemiology, based on in vivo evidence and from individual and epidemiological studies. These nonneutral interactions, mostly facilitative for bacteria and competitive for viruses, probably have individual- and population-level effects on influenza pathogenicity, burden, and potentially its epidemic profile.

Mathematical models are crucial to guide public health decision makers, who, for ethical or cost reasons, cannot conduct large-scale trials. Two examples of interventions based on modeling results and mobilizing important public resources are pandemic preparedness (stockpiling of antivirals, use of vaccine doses) [118] and national immunization programs [20]. Neglecting the cocirculating pathogens—i.e., adopting influenza tunnel vision—and the indirect impact of coinfections may potentially affect the estimation of the risk associated with influenza infection and, consequently, the accuracy of model predictions. Interaction strength may also change from year to year and depend on the circulating influenza strains. For evaluation of interventions, this neglect can lead to overestimation of the impact—if burden was measured without considering the changing landscape of coinfection in the population—or underestimation—if the effect of an intervention does not account for the potentially decreased burden of an interacting pathogen as a result of diminished influenza transmission. For all these reasons, we think that adopting a more holistic approach to modelling of respiratory pathogens will improve their surveillance and the strategy to control them.

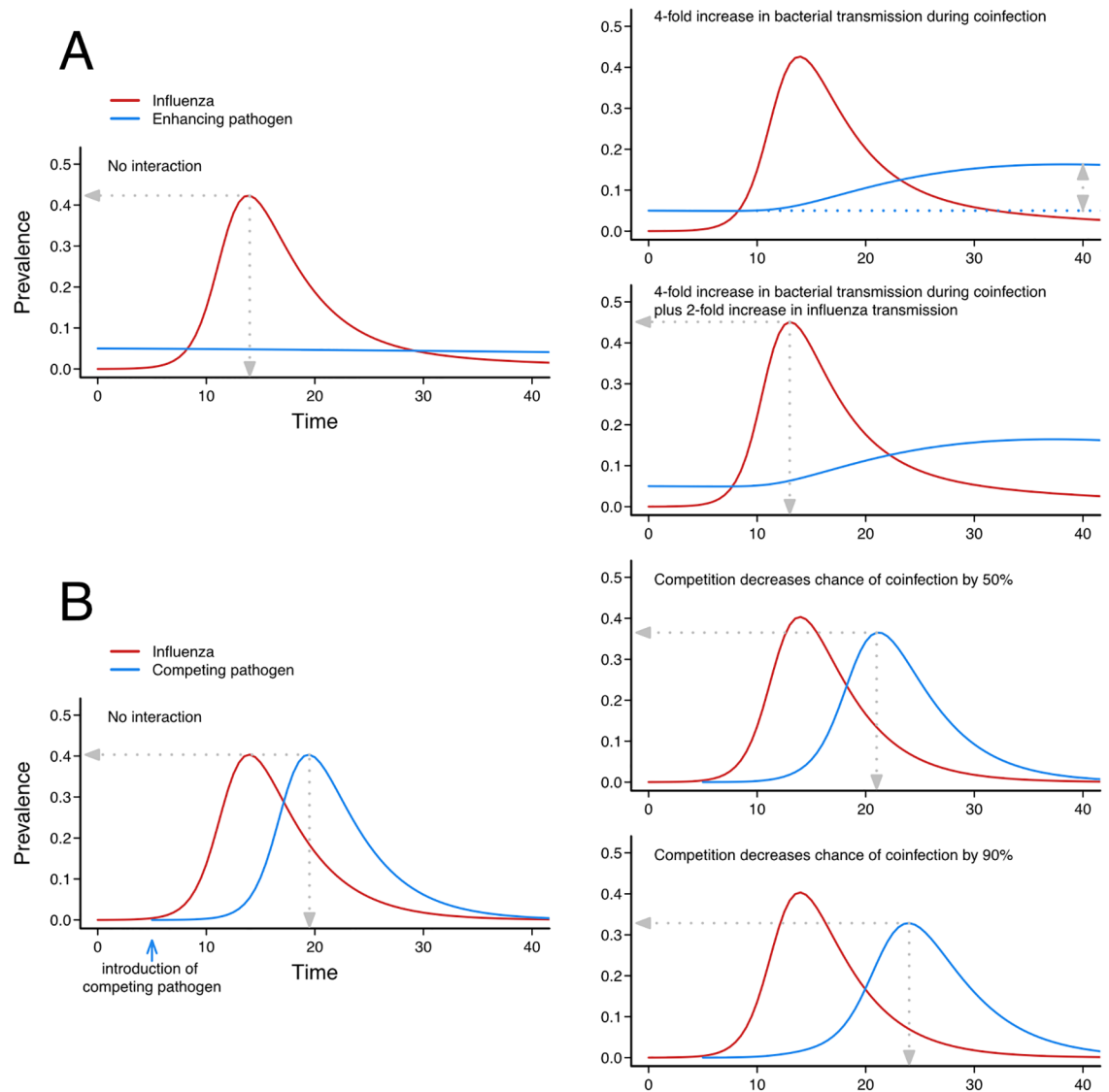
### Opportunities

Considering influenza virus in its ecological context and its interactions as a cause of the associated morbidity and mortality should offer opportunities for prevention and treatment. In



**Fig 3. Illustration of a simple model of two circulating pathogens in interactions.** Schematic of the compartments and rates of transition between compartments, with equations of the forces of infection by pathogen 1 ( $\lambda_1$ ), pathogen 2 ( $\lambda_2$ ) for susceptible hosts, and pathogen 1 ( $\lambda_{21}$ ) and pathogen 2 ( $\lambda_{12}$ ) for hosts already infected by the other pathogen. The full system of ordinary differential equations describing the changes of the compartment’s populations over time is described in S1 Appendix, section B. Details of the model and parameters are provided in Box 3.

<https://doi.org/10.1371/journal.ppat.1006770.g003>



**Fig 4. Example model outputs showing effect of synergistic and competitive interaction.** Box 3 gives details on the model that produces these epidemic trajectories. (A) In the baseline enhancing scenario, an endemic bacterial pathogen (blue) occurs at 5% prevalence. An influenza epidemic occurs with no interaction, and the bacterial prevalence does not change. If the presence of influenza coinfection increases bacterial transmissibility by 4-fold ( $\sigma_1 = 4$ ), then there is a transient rise in bacterial prevalence. If there is also an increase in influenza transmissibility during coinfection ( $\sigma_1 = 4$  and  $\sigma_2 = 2$ ), then there is also a higher and earlier influenza peak as a result of coinfection. (B) In the baseline competition scenario, the second epidemic pathogen is introduced later than influenza. The two pathogens have the same transmission characteristics (same  $\gamma$ , same  $\beta$ ). If there is only a 50% chance of infection with pathogen 2 when individuals are infected with pathogen 1 ( $\delta_1 = 0.5$ ), then the epidemic trajectory of pathogen 2 is lower and later. If competition is even stronger ( $\delta_1 = 0.1$ ) so there is a 90% reduction in chance of coinfection, the profile of pathogen 2 is even further separated from pathogen 1. Computer code generating these trajectories is given in S1 Code.

<https://doi.org/10.1371/journal.ppat.1006770.g004>

addition to influenza vaccines that (partially) protect against infection, antibacterial vaccines are also critical. For example, pneumococcal vaccines have been shown to have good efficacy against influenza-associated nonbacteremic pneumonias [119,120]. The 23-valent pneumococcal polysaccharide vaccine significantly lowered the risk of invasive pneumococcal disease and attributed mortality in the elderly [121]. Better understanding of possible influenza–pneumococcus interactions and integrating those into transmission models could potentially enable us to identify synergies between vaccination programs and optimize the use of both vaccines.

In addition, there may be opportunities for optimization of antibiotic and antiviral prescriptions. First, antibiotics have historically been used to prevent secondary infections [122,123]. Increasing rates of antibiotic resistance worldwide led to policies to decrease antibiotic consumption, focusing particular attention on reducing prescriptions for viral infections. Second, neuraminidase inhibitors were found to prevent some secondary bacterial pneumonias in animal experiments, human epidemiological studies, and mathematical modelling studies, beyond the window in which they directly impact the influenza viral load [98,124,125]. Although antivirals may only modestly attenuate influenza symptoms, a body of evidence suggests they could avoid severe and economically important outcomes of influenza infection [125–128].

Lastly, accurate burden quantification is crucial to designing and implementing public health interventions against influenza. Focusing efforts to better understand these interactions is therefore critical, especially in the context of pandemic influenza but also to plan for seasonal epidemics, by forecasting the onset and peak times and estimating the expected burden. To improve our knowledge, models can be used to analyse available surveillance and experimental data, generate hypotheses regarding interaction mechanisms at play in transmission or infection, and test their likelihoods. Competing assumptions on the biological interaction processes can be assessed, and the strength of interactions can also be estimated. From a public health viewpoint, such models would help better estimate the burden of influenza virus interactions in terms of morbidity and mortality, the cost-effectiveness of interventions, and, critically, more accurately predict the real impact of control measures.

## Challenges

Integrating transmission and infection by multiple pathogens into mathematical models poses several challenges. From a methodological perspective, modelling several pathogens with inter-related natural histories makes classical compartmental approaches more difficult. Individual-based frameworks (Box 1) are better adapted for this task. For example, this approach could be used to investigate the effect of the interval between influenza infection and bacterial acquisition, which reportedly affects the risk of bacterial invasion [31,129]. Individual-based models are often more computationally intensive and can introduce new difficulties in terms of parameter estimation, requiring the design of new methods. Recent developments in statistical inference methods, like particle Markov chain Monte Carlo (pMCMC) or maximum likelihood estimation via iterated filtering (MIF) [130,131], now enable modelers to jointly fit complex population-based models to multiple types of data, thereby allowing more data and more diverse types of data to inform the model parameters.

Epidemiological data represent the second major challenge. To date, modelling studies have been limited by the poor knowledge of respiratory viruses and bacteria circulating in the community, especially because little is known about prevalence, incidence, at-risk populations, and even epidemic profiles in different populations. Deeper understanding of the ecology of the vast number of microorganisms that can contribute is needed. On an individual level, new studies are required to assess the effect of coinfections rather than ecological associations from incidence data. Important features include (i) coinfection-induced alteration of diseases' natural histories, e.g., increased acquisition and severity risk, changes of infection durations and generation times; (ii) specific at-risk periods for secondary infection or invasion of the coinfecting pathogen, or at-risk periods for severe outcomes; and (iii) at-risk populations, as characterized by individuals' age, comorbidities, or behavioural risk factors.

For population-level data, in most countries, surveillance of influenza acquisition is based on networks of general practitioners who notify patients consulting for clinical symptoms of

ILI [132]. Surveillance data streams based on syndromic surveillance [133], inpatient data [134], and pathogen testing [135,136] should be combined, and linked at the patient level, to better identify noninfluenza infections or anomalous epidemics that could signal interaction. Improvement of data quality in patient records and detection of the biases inherent in different types of surveillance data are critical to achieve this goal. The latter could be reached by developing new microbiological tools, including new sampling kits able to rapidly detect multiple pathogens for use during medical consultations.

Public health decision-making for interacting pathogens is a difficult but important challenge. When multiple competing treatment options are available, a coherent framework is needed to determine the best strategy. While the question goes beyond influenza to interactions and coinfections for respiratory viruses in general (e.g., RSV), influenza is one of the most studied viral infections and is therefore the ideal first candidate to develop a more holistic mathematical modelling approach.

## Conclusion

In this study, we examined the epidemiological and biological evidence supporting influenza virus interference and interaction with other pathogens. We highlighted opportunities to improve knowledge and control of the virus, if we can move forward from the tunnel vision of single-pathogen models. It is time to develop a more holistic approach to pathogen dynamics in mathematical modelling, with novel methodological innovations, and further efforts in data collection and surveillance. The motivation to do so lies in the real opportunity to improve public health practices and create better, more cost-effective interventions against influenza.

## Supporting information

**S1 Fig. PRISMA diagram for search for influenza–bacteria interactions.**

(TIF)

**S2 Fig. PRISMA diagram for search for influenza–other virus interactions.**

(TIF)

**S1 Appendix. Microsoft Word document providing details on the search strategy and the mathematical model.**

(DOCX)

**S1 Code. Computer code of the coinfection model.**

(R)

## Acknowledgments

The authors are grateful to Elizabeth Miller and Matthieu Domenech de Celles for helpful comments on an early version of the manuscript. The authors also thank John Edmunds for suggesting writing this review following a talk by LO at Public Health England. Finally, they would like to thank the three anonymous reviewers for very helpful and constructive comments.

## References

1. Webster RG, Monto A. S., Braciale T. J. & Lamb R. A. (2013) Textbook of Influenza.
2. de Steenhuijsen Piters WAA, Sanders EAM, Bogaert D, Grice E, Segre J, et al. (2015) The role of the local microbial ecosystem in respiratory health and disease. *Philosophical transactions of the Royal Society of London Series B, Biological sciences* 370: 244–253.

3. Bosch AATM, Biesbroek G, Trzcinski K, Sanders EAM, Bogaert D (2013) Viral and bacterial interactions in the upper respiratory tract. *PLoS Pathog* 9: e1003057. <https://doi.org/10.1371/journal.ppat.1003057> PMID: 23326226
4. Yamin D, Balicer RD, Galvani AP (2014) Cost-effectiveness of influenza vaccination in prior pneumonia patients in Israel. *Vaccine* 32: 4198–4205. <https://doi.org/10.1016/j.vaccine.2014.05.015> PMID: 24930716
5. Bedford T, Riley S, Barr IG, Broor S, Chadha M, et al. (2015) Global circulation patterns of seasonal influenza viruses vary with antigenic drift. *Nature* 523: 217–220. <https://doi.org/10.1038/nature14460> PMID: 26053121
6. Hayward AC, Fragaszy EB, Bermingham A, Wang L, Copas A, et al. (2014) Comparative community burden and severity of seasonal and pandemic influenza: results of the Flu Watch cohort study. *Lancet Respir Med* 2: 445–454. [https://doi.org/10.1016/S2213-2600\(14\)70034-7](https://doi.org/10.1016/S2213-2600(14)70034-7) PMID: 24717637
7. de Francisco Shapovalova N, Donadel M, Jit M, Hutubessy R (2015) A systematic review of the social and economic burden of influenza in low- and middle-income countries. *Vaccine* 33: 6537–6544. <https://doi.org/10.1016/j.vaccine.2015.10.066> PMID: 26597032
8. Brundage JF, Shanks GD (2008) Deaths from bacterial pneumonia during 1918–19 influenza pandemic. *Emerging Infectious Diseases* 14: 1193–1199. <https://doi.org/10.3201/eid1408.071313> PMID: 18680641
9. Joseph C, Togawa Y, Shindo N (2013) Bacterial and viral infections associated with influenza. *Influenza and Other Respiratory Viruses* 7: 105–113. <https://doi.org/10.1111/irv.12089> PMID: 24034494
10. Morens DM, Taubenberger JK, Fauci AS (2008) Predominant role of bacterial pneumonia as a cause of death in pandemic influenza: implications for pandemic influenza preparedness. *The Journal of infectious diseases* 198: 962–970. <https://doi.org/10.1086/591708> PMID: 18710327
11. Grassly NC, Fraser C (2008) Mathematical models of infectious disease transmission. *Nat Rev Microbiol* 6: 477–487. <https://doi.org/10.1038/nrmicro1845> PMID: 18533288
12. Neher RA, Bedford T (2015) nextflu: real-time tracking of seasonal influenza virus evolution in humans. *Bioinformatics* 31: 3546–3548. <https://doi.org/10.1093/bioinformatics/btv381> PMID: 26115986
13. Viboud C, Bjornstad ON, Smith DL, Simonsen L, Miller MA, et al. (2006) Synchrony, waves, and spatial hierarchies in the spread of influenza. *Science* 312: 447–451. <https://doi.org/10.1126/science.1125237> PMID: 16574822
14. Wu JT, Riley S, Fraser C, Leung GM (2006) Reducing the impact of the next influenza pandemic using household-based public health interventions. *PLoS Med* 3: e361. <https://doi.org/10.1371/journal.pmed.0030361> PMID: 16881729
15. Longini IM Jr., Halloran ME, Nizam A, Yang Y (2004) Containing pandemic influenza with antiviral agents. *Am J Epidemiol* 159: 623–633. PMID: 15033640
16. Gaglani MJ, Piedra PA, Herschler GB, Griffith ME, Kozinetz CA, et al. (2004) Direct and total effectiveness of the intranasal, live-attenuated, trivalent cold-adapted influenza virus vaccine against the 2000–2001 influenza A(H1N1) and B epidemic in healthy children. *Arch Pediatr Adolesc Med* 158: 65–73. <https://doi.org/10.1001/archpedi.158.1.65> PMID: 14706961
17. Matrajt L, Halloran ME, Longini IM Jr. (2013) Optimal vaccine allocation for the early mitigation of pandemic influenza. *PLoS Comput Biol* 9: e1002964. <https://doi.org/10.1371/journal.pcbi.1002964> PMID: 23555207
18. House T, Baguelin M, Van Hoek AJ, White PJ, Sadique Z, et al. (2011) Modelling the impact of local reactive school closures on critical care provision during an influenza pandemic. *Proc Biol Sci* 278: 2753–2760. <https://doi.org/10.1098/rspb.2010.2688> PMID: 21288945
19. Ferguson NM, Cummings DA, Fraser C, Cajka JC, Cooley PC, et al. (2006) Strategies for mitigating an influenza pandemic. *Nature* 442: 448–452. <https://doi.org/10.1038/nature04795> PMID: 16642006
20. Baguelin M, Flasche S, Camacho A, Demiris N, Miller E, et al. (2013) Assessing optimal target populations for influenza vaccination programmes: an evidence synthesis and modelling study. *PLoS Med* 10: e1001527. <https://doi.org/10.1371/journal.pmed.1001527> PMID: 24115913
21. Opatowski L, Fraser C, Griffin J, de Silva E, Van Kerkhove MD, et al. (2011) Transmission characteristics of the 2009 H1N1 influenza pandemic: comparison of 8 Southern hemisphere countries. *PLoS Pathog* 7: e1002225. <https://doi.org/10.1371/journal.ppat.1002225> PMID: 21909272
22. Kucharski AJ, Kwok KO, Wei VW, Cowling BJ, Read JM, et al. (2014) The contribution of social behaviour to the transmission of influenza A in a human population. *PLoS Pathog* 10: e1004206. <https://doi.org/10.1371/journal.ppat.1004206> PMID: 24968312
23. Cauchemez S, Bhattarai A, Marchbanks TL, Fagan RP, Ostroff S, et al. (2011) Role of social networks in shaping disease transmission during a community outbreak of 2009 H1N1 pandemic influenza.

Proc Natl Acad Sci U S A 108: 2825–2830. <https://doi.org/10.1073/pnas.1008895108> PMID: 21282645

24. Apolloni A, Poletto C, Colizza V (2013) Age-specific contacts and travel patterns in the spatial spread of 2009 H1N1 influenza pandemic. *BMC Infect Dis* 13: 176. <https://doi.org/10.1186/1471-2334-13-176> PMID: 23587010
25. Shaman J, Pitzer VE, Viboud C, Grenfell BT, Lipsitch M (2010) Absolute humidity and the seasonal onset of influenza in the continental United States. *PLoS Biol* 8: e1000316. <https://doi.org/10.1371/journal.pbio.1000316> PMID: 20186267
26. Baguelin M, Hoek AJ, Jit M, Flasche S, White PJ, et al. (2010) Vaccination against pandemic influenza A/H1N1v in England: a real-time economic evaluation. *Vaccine* 28: 2370–2384. <https://doi.org/10.1016/j.vaccine.2010.01.002> PMID: 20096762
27. Mina MJ, Klugman KP (2014) The role of influenza in the severity and transmission of respiratory bacterial disease. *The Lancet Respiratory medicine* 2: 750–763. [https://doi.org/10.1016/S2213-2600\(14\)70131-6](https://doi.org/10.1016/S2213-2600(14)70131-6) PMID: 25131494
28. Short K, Habets M (2012) Interactions between *Streptococcus pneumoniae* and influenza virus: a mutually beneficial relationship? *Future Microbiology*: 609–624. <https://doi.org/10.2217/fmb.12.29> PMID: 22568716
29. DaPalma T, Doonan BP, Trager NM, Kasman LM (2010) A systematic approach to virus-virus interactions. *Virus research* 149: 1–9. <https://doi.org/10.1016/j.virusres.2010.01.002> PMID: 20093154
30. Abramson JS, Mills EL, Giebink GS, Quie PG (1982) Depression of monocyte and polymorphonuclear leukocyte oxidative metabolism and bactericidal capacity by influenza A virus. *Infection and immunity* 35: 350–355. PMID: 7054126
31. Rynda-Apple A, Robinson KM, Alcorn JF (2015) Influenza and bacterial superinfection: Illuminating the immunologic mechanisms of disease. *Infection and Immunity* 83: 3764–3770. <https://doi.org/10.1128/IAI.00298-15> PMID: 26216421
32. Ghoneim HE, Thomas PG, McCullers JA (2013) Depletion of alveolar macrophages during influenza infection facilitates bacterial superinfections. *Journal of immunology (Baltimore, Md: 1950)* 191: 1250–1259.
33. Sen GC (2001) Viruses and interferons. *Annu Rev Microbiol* 55: 255–281. <https://doi.org/10.1146/annurev.micro.55.1.255> PMID: 11544356
34. Loh E, Kugelberg E, Tracy A, Zhang Q, Gollan B, et al. (2013) Temperature triggers immune evasion by *Neisseria meningitidis*. *Nature* 502: 237–240. <https://doi.org/10.1038/nature12616> PMID: 24067614
35. Braun LE, Sutter DE, Eichelberger MC, Pletneva L, Kokai-Kun JF, et al. (2007) Co-infection of the cotton rat (*Sigmodon hispidus*) with *Staphylococcus aureus* and influenza A virus results in synergistic disease. *Microbial Pathogenesis* 43: 208–216. <https://doi.org/10.1016/j.micpath.2007.03.005> PMID: 17689046
36. Smith AM, McCullers JA (2014) Secondary bacterial infections in influenza virus infection pathogenesis. *Current topics in microbiology and immunology* 385: 327–356. [https://doi.org/10.1007/82\\_2014\\_394](https://doi.org/10.1007/82_2014_394) PMID: 25027822
37. Tashiro M, Ciborowski P, Reinacher M, Pulverer G, Klenk HD, et al. (1987) Synergistic role of staphylococcal proteases in the induction of influenza virus pathogenicity. *Virology* 157: 421–430. PMID: 3029981
38. Rohani P, Earn DJ, Finkenstädt B, Grenfell BT (1998) Population dynamic interference among childhood diseases. *Proceedings Biological sciences / The Royal Society* 265: 2033–2041.
39. Rohani P, Green CJ, Mantilla-Beniers NB, Grenfell BT (2003) Ecological interference between fatal diseases. *Nature* 422: 885–888. <https://doi.org/10.1038/nature01542> PMID: 12712203
40. Turner RD, Bothamley GH (2015) Cough and the transmission of tuberculosis. *The Journal of infectious diseases* 211: 1367–1372. <https://doi.org/10.1093/infdis/jiu625> PMID: 25387581
41. Cohen R, Varon E, Doit C, Schlemmer C, Romain O, et al. (2015) A 13-year survey of pneumococcal nasopharyngeal carriage in children with acute otitis media following PCV7 and PCV13 implementation. *Vaccine* 33: 5118–5126. <https://doi.org/10.1016/j.vaccine.2015.08.010> PMID: 26271823
42. Yildirim I, Little BA, Finkelstein J, Lee G, Hanage WP, et al. (2017) Surveillance of pneumococcal colonization and invasive pneumococcal disease reveals shift in prevalent carriage serotypes in Massachusetts' children to relatively low invasiveness. *Vaccine* 35: 4002–4009. <https://doi.org/10.1016/j.vaccine.2017.05.077> PMID: 28645717
43. Barbour ML (1996) Conjugate vaccines and the carriage of *Haemophilus influenzae* type b. *Emerg Infect Dis* 2: 176–182. <https://doi.org/10.3201/eid0203.960303> PMID: 8903227



44. Hammitt LL, Crane RJ, Karani A, Mutuku A, Morpeth SC, et al. (2016) Effect of Haemophilus influenzae type b vaccination without a booster dose on invasive H influenzae type b disease, nasopharyngeal carriage, and population immunity in Kilifi, Kenya: a 15-year regional surveillance study. *Lancet Glob Health* 4: e185–194. [https://doi.org/10.1016/S2214-109X\(15\)00316-2](https://doi.org/10.1016/S2214-109X(15)00316-2) PMID: 26853149
45. McCullers JA (2006) Insights into the interaction between influenza virus and pneumococcus. *Clinical microbiology reviews* 19: 571–582. <https://doi.org/10.1128/CMR.00058-05> PMID: 16847087
46. Zhou H, Haber M, Ray S, Farley MM, Panozzo CA, et al. (2012) Invasive pneumococcal pneumonia and respiratory virus co-infections. *Emerg Infect Dis* 18: 294–297. <https://doi.org/10.3201/eid1802.102025> PMID: 22305270
47. Kim PE, Musher DM, Glezen WP, Rodriguez-Barradas MC, Nahm WK, et al. (1996) Association of invasive pneumococcal disease with season, atmospheric conditions, air pollution, and the isolation of respiratory viruses. *Clin Infect Dis* 22: 100–106. PMID: 8824973
48. Watson M, Gilmour R, Menzies R, Ferson M, McIntyre P, et al. (2006) The association of respiratory viruses, temperature, and other climatic parameters with the incidence of invasive pneumococcal disease in Sydney, Australia. *Clin Infect Dis* 42: 211–215. <https://doi.org/10.1086/498897> PMID: 16355331
49. Toschke AM, Arenz S, von Kries R, Puppe W, Weigl JA, et al. (2008) No temporal association between influenza outbreaks and invasive pneumococcal infections. *Arch Dis Child* 93: 218–220. <https://doi.org/10.1136/adc.2006.098996> PMID: 17405858
50. Sun K, Metzger DW (2014) Influenza Infection Suppresses NADPH Oxidase-Dependent Phagocytic Bacterial Clearance and Enhances Susceptibility to Secondary Methicillin-Resistant Staphylococcus aureus Infection. *Journal of immunology (Baltimore, Md: 1950)* 192: 3301–3307.
51. Lee LN, Dias P, Han D, Yoon S, Shea A, et al. (2010) A mouse model of lethal synergism between influenza virus and Haemophilus influenzae. *The American journal of pathology* 176: 800–811. <https://doi.org/10.2353/ajpath.2010.090596> PMID: 20042666
52. Hubert B, Watier L, Garnerin P, Richardson S (1992) Meningococcal disease and influenza-like syndrome: a new approach to an old question. *The Journal of infectious diseases* 166: 542–545. PMID: 1500737
53. Rameix-Welti M-A, Zarantonelli ML, Giorgini D, Ruckly C, Marasescu M, et al. (2009) Influenza A virus neuraminidase enhances meningococcal adhesion to epithelial cells through interaction with sialic acid-containing meningococcal capsules. *Infection and immunity* 77: 3588–3595. <https://doi.org/10.1128/IAI.00155-09> PMID: 19528219
54. Walaza S, Tempia S, Dawood H, Variava E, Moyes J, et al. (2015) Influenza virus infection is associated with increased risk of death amongst patients hospitalized with confirmed pulmonary tuberculosis in South Africa, 2010–2011. *BMC Infectious Diseases* 15: 26. <https://doi.org/10.1186/s12879-015-0746-x> PMID: 25623944
55. Flórido M, Grima Ma, Gillis CM, Xia Y, Turner SJ, et al. (2013) Influenza A virus infection impairs mycobacteria-specific T cell responses and mycobacterial clearance in the lung during pulmonary coinfection. *J Immunol* 191: 302–311. <https://doi.org/10.4049/jimmunol.1202824> PMID: 23698750
56. Sonoguchi T, Naito H, Hara M, Takeuchi Y, Fukumi H (1985) Cross-Subtype Protection in Humans During Sequential, Overlapping, and/or Concurrent Epidemics Caused by H3N2 and H1N1 Influenza Viruses. *Journal of Infectious Diseases* 151: 81–88. PMID: 3965596
57. Laurie KL, Guarnaccia TA, Carolan LA, Yan AWC, Aban M, et al. (2015) Interval Between Infections and Viral Hierarchy Are Determinants of Viral Interference Following Influenza Virus Infection in a Ferret Model. *Journal of Infectious Diseases* 212: 1–10.
58. Bedford T, Rambaut A, Pascual M (2012) Canalization of the evolutionary trajectory of the human influenza virus. *BMC biology* 10: 38. <https://doi.org/10.1186/1741-7007-10-38> PMID: 22546494
59. Boni MF, Gog JR, Andreasen V, Christiansen FB (2004) Influenza drift and epidemic size: the race between generating and escaping immunity. *Theoretical population biology* 65: 179–191. <https://doi.org/10.1016/j.tpb.2003.10.002> PMID: 14766191
60. Smith DJ, Lapedes AS, de Jong JC, Bestebroer TM, Rimmelzwaan GF, et al. (2004) Mapping the antigenic and genetic evolution of influenza virus. *Science* 305: 371–376. <https://doi.org/10.1126/science.1097211> PMID: 15218094
61. Davenport FM, Hennessy AV, Francis T Jr. (1953) Epidemiologic and immunologic significance of age distribution of antibody to antigenic variants of influenza virus. *J Exp Med* 98: 641–656. PMID: 13109114
62. Gostic KM, Ambrose M, Worobey M, Lloyd-Smith JO (2016) Potent protection against H5N1 and H7N9 influenza via childhood hemagglutinin imprinting. *Science* 354: 722–726. <https://doi.org/10.1126/science.aag1322> PMID: 27846599

63. Kucharski AJ, Gog JR (2012) The role of social contacts and original antigenic sin in shaping the age pattern of immunity to seasonal influenza. *PLoS Comput Biol* 8: e1002741. <https://doi.org/10.1371/journal.pcbi.1002741> PMID: 23133346
64. Skowronski DM, De Serres G, Crowcroft NS, Janjua NZ, Boulianne N, et al. (2010) Association between the 2008–09 Seasonal Influenza Vaccine and Pandemic H1N1 Illness during Spring–Summer 2009: Four Observational Studies from Canada. *PLoS Med* 7: e1000258. <https://doi.org/10.1371/journal.pmed.1000258> PMID: 20386731
65. Cowling BJ, Fang VJ, Nishiura H, Chan K-H, Ng S, et al. (2012) Increased risk of noninfluenza respiratory virus infections associated with receipt of inactivated influenza vaccine. *Clinical infectious diseases: an official publication of the Infectious Diseases Society of America* 54: 1778–1783.
66. Casalegno JS, Ottmann M, Duchamp MB, Escuret V, Billaud G, et al. (2010) Rhinoviruses delayed the circulation of the pandemic influenza A (H1N1) 2009 virus in France. *Clinical microbiology and infection: the official publication of the European Society of Clinical Microbiology and Infectious Diseases* 16: 326–329.
67. Yang L, Chan KH, Suen LKP, Chan KP, Wang X, et al. (2015) Impact of the 2009 H1N1 Pandemic on Age-Specific Epidemic Curves of Other Respiratory Viruses: A Comparison of Pre-Pandemic, Pandemic and Post-Pandemic Periods in a Subtropical City. *PLoS ONE* 10: e0125447. <https://doi.org/10.1371/journal.pone.0125447> PMID: 25928217
68. Navarro-Marí JM, Pérez-Ruiz M, Galán Montemayor JC, Marcos Maeso MÁ, Reina J, et al. (2012) Circulation of other respiratory viruses and viral co-infection during the 2009 pandemic influenza. *Enfermedades infecciosas y microbiología clínica* 30 Suppl 4: 25–31.
69. Yoshida L-M, Suzuki M, Nguyen HA, Le MN, Dinh Vu T, et al. (2013) Respiratory syncytial virus: co-infection and paediatric lower respiratory tract infections. *The European respiratory journal* 42: 461–469. <https://doi.org/10.1183/09031936.00101812> PMID: 23645407
70. Richard N, Komurian-Pradel F, Javouhey E, Perret M, Rajoharison A, et al. (2008) The Impact of Dual Viral Infection in Infants Admitted to a Pediatric Intensive Care Unit Associated with Severe Bronchiolitis. *The Pediatric Infectious Disease Journal* 27: 213–217. <https://doi.org/10.1097/INF.0b013e31815b4935> PMID: 18277932
71. Marcos MA, Ramón S, Antón A, Martínez E, Vilella A, et al. (2011) Clinical relevance of mixed respiratory viral infections in adults with influenza A H1N1. *The European respiratory journal* 38: 739–742. <https://doi.org/10.1183/09031936.00168610> PMID: 21885422
72. Schnepf N, Resche-Rigon M, Chaillon A, Scemla A, Gras G, et al. (2011) High burden of non-influenza viruses in influenza-like illness in the early weeks of H1N1v epidemic in France. *PLoS ONE* 6: e23514. <https://doi.org/10.1371/journal.pone.0023514> PMID: 21858150
73. Rhedin S, Hamrin J, Naucler P, Bennet R, Rotzén-Östlund M, et al. (2012) Respiratory Viruses in Hospitalized Children with Influenza-Like Illness during the H1n1 2009 Pandemic in Sweden. *PLoS ONE* 7: e51491. <https://doi.org/10.1371/journal.pone.0051491> PMID: 23272110
74. Esper FP, Spahlinger T, Zhou L (2011) Rate and influence of respiratory virus co-infection on pandemic (H1N1) influenza disease. *The Journal of infection* 63: 260–266. <https://doi.org/10.1016/j.jinf.2011.04.004> PMID: 21546090
75. Anestad G (1982) Interference between outbreaks of respiratory syncytial virus and influenza virus infection. *Lancet (London, England)* 1: 502.
76. Glezen WP, Paredes A, Taber LH (1980) Influenza in children. Relationship to other respiratory agents. *JAMA* 243: 1345–1349. PMID: 6244421
77. Casalegno JS, Ottmann M, Bouscambert-Duchamp M, Valette M, Morfin F, et al. (2010) Impact of the 2009 influenza A(H1N1) pandemic wave on the pattern of hibernal respiratory virus epidemics, France, 2009. *Euro surveillance: bulletin Européen sur les maladies transmissibles = European communicable disease bulletin* 15: 1.
78. Mak GC, Wong AH, Ho WYY, Lim W (2012) The impact of pandemic influenza A (H1N1) 2009 on the circulation of respiratory viruses 2009–2011. *Influenza and other respiratory viruses* 6: e6–10. <https://doi.org/10.1111/j.1750-2659.2011.00323.x> PMID: 22212717
79. Yang Y, Wang Z, Ren L, Wang W, Vernet G, et al. (2012) Influenza A/H1N1 2009 pandemic and respiratory virus infections, Beijing, 2009–2010. *PLoS ONE* 7: e45807. <https://doi.org/10.1371/journal.pone.0045807> PMID: 23029253
80. Aberle JHMA, Stephan W. MD\*; Pracher Elisabeth MD‡; Hutter Hans-Peter MD‡; Kundi Michael MD‡; Popow-Kraupp Therese MD\* (2005) Single Versus Dual Respiratory Virus Infections in Hospital. . . : *The Pediatric Infectious Disease Journal. The pediatric infectious disease journal* 24.
81. Goka E, Valley P, Mutton K, Klapper P (2013) Influenza A viruses dual and multiple infections with other respiratory viruses and risk of hospitalisation and mortality. *Influenza Other Respir Viruses* 7: 1079–1087. <https://doi.org/10.1111/irv.12020> PMID: 23078095

82. Walzl G, Tafuro S, Moss P, Openshaw PJ, Hussell T (2000) Influenza virus lung infection protects from respiratory syncytial virus-induced immunopathology. *The Journal of experimental medicine* 192: 1317–1326. PMID: [11067880](#)
83. Pascalis H, Temmam S, Turpin M, Rollot O, Flahault A, et al. (2012) Intense Co-Circulation of Non-Influenza Respiratory Viruses during the First Wave of Pandemic Influenza pH1N1/2009: A Cohort Study in Reunion Island. *PLoS ONE* 7: e44755. <https://doi.org/10.1371/journal.pone.0044755> PMID: [22984554](#)
84. Greer RM, McErlean P, Arden KE, Faux CE, Nitsche A, et al. (2009) Do rhinoviruses reduce the probability of viral co-detection during acute respiratory tract infections? *Journal of Clinical Virology* 45: 10–15. <https://doi.org/10.1016/j.jcv.2009.03.008> PMID: [19376742](#)
85. Murphy BR, Richman DD, Chalhub EG, Uhlenendorf CP, Baron S, et al. (1975) Failure of attenuated temperature-sensitive influenza A (H3N2) virus to induce heterologous interference in humans to para-influenza type 1 virus. *Infection and immunity* 12: 62–68. PMID: [166929](#)
86. Nisii C, Meschi S, Selleri M, Bordi L, Castilletti C, et al. (2010) Frequency of detection of upper respiratory tract viruses in patients tested for pandemic H1N1/09 viral infection. *Journal of clinical microbiology* 48: 3383–3385. <https://doi.org/10.1128/JCM.01179-10> PMID: [20592147](#)
87. Goka EA, Vallely PJ, Mutton KJ, Klapper PE (2014) Single and multiple respiratory virus infections and severity of respiratory disease: a systematic review. *Paediatric respiratory reviews* 15: 363–370. <https://doi.org/10.1016/j.prrv.2013.11.001> PMID: [24361079](#)
88. Nicoli EJ, Trotter CL, Turner KME, Colijn C, Waight P, et al. (2013) Influenza and RSV make a modest contribution to invasive pneumococcal disease incidence in the UK. *The Journal of infection* 66: 512–520. <https://doi.org/10.1016/j.jinf.2013.02.007> PMID: [23473714](#)
89. Weinberger DM, Harboe ZB, Krause TG, Miller M, Konradsen HB (2013) Serotype-specific effect of influenza on adult invasive pneumococcal pneumonia. *Journal of Infectious Diseases*: 1–22.
90. Gilca R, De Serres G, Skowronski D, Boivin G, Buckeridge DL (2009) The need for validation of statistical methods for estimating respiratory virus-attributable hospitalization. *Am J Epidemiol* 170: 925–936. <https://doi.org/10.1093/aje/kwp195> PMID: [19679751](#)
91. Hendriks W, Boshuizen H, Dekkers A, Knol M, Donker GA, et al. (2017) Temporal cross-correlation between influenza-like illnesses and invasive pneumococcal disease in The Netherlands. *Influenza Other Respir Viruses* 11: 130–137. <https://doi.org/10.1111/irv.12442> PMID: [27943624](#)
92. Upshur RE, Moineddin R, Crighton EJ, Mamdani M (2006) Interactions of viral pathogens on hospital admissions for pneumonia, croup and chronic obstructive pulmonary diseases: results of a multivariate time-series analysis. *Epidemiol Infect* 134: 1174–1178. <https://doi.org/10.1017/S0950268806006236> PMID: [16623988](#)
93. Randuineau B (2015) Interactions between pathogens: what are the impacts on public health: Université Pierre et Marie Curie.
94. Domenech de Celles M, Arduin H, Varon E, Souty C, Boelle PY, et al. (2017) Characterizing and Comparing the Seasonality of Influenza-Like Illnesses and Invasive Pneumococcal Diseases Using Seasonal Waveforms. *Am J Epidemiol*.
95. Boianelli A, Nguyen VK, Ebensen T, Schulze K, Wilk E, et al. (2015) Modelling Influenza Virus Infection: A Roadmap for Influenza Research. *Viruses* 7: 5274–5304. <https://doi.org/10.3390/v7102875> PMID: [26473911](#)
96. Hodgson D, Baguelin M, van Leeuwen E, Panovska-Griffiths J, Ramsay M, et al. (2017) Effect of mass paediatric influenza vaccination on existing influenza vaccination programmes in England and Wales: a modelling and cost-effectiveness analysis. *Lancet Public Health* 2: e74–e81. [https://doi.org/10.1016/S2468-2667\(16\)30044-5](https://doi.org/10.1016/S2468-2667(16)30044-5) PMID: [28299371](#)
97. Smith AM, Adler FR, Ribeiro RM, Gutenkunst RN, McAuley JL, et al. (2013) Kinetics of coinfection with influenza A virus and *Streptococcus pneumoniae*. *PLoS Pathog* 9: e1003238. <https://doi.org/10.1371/journal.ppat.1003238> PMID: [23555251](#)
98. Shrestha S, Foxman B, Dawid S, Aiello AE, Davis BM, et al. (2013) Time and dose-dependent risk of pneumococcal pneumonia following influenza: a model for within-host interaction between influenza and *Streptococcus pneumoniae*. *Journal of the Royal Society, Interface / the Royal Society* 10: 20130233.
99. Smith AM, Smith AP (2016) A Critical, Nonlinear Threshold Dictates Bacterial Invasion and Initial Kinetics During Influenza. *Sci Rep* 6: 38703. <https://doi.org/10.1038/srep38703> PMID: [27974820](#)
100. Smith AM (2017) Quantifying the therapeutic requirements and potential for combination therapy to prevent bacterial coinfection during influenza. *J Pharmacokinet Pharmacodyn* 44: 81–93. <https://doi.org/10.1007/s10928-016-9494-9> PMID: [27679506](#)

101. Boianelli A, Sharma-Chawla N, Bruder D, Hernandez-Vargas EA (2016) Oseltamivir PK/PD Modelling and Simulation to Evaluate Treatment Strategies against Influenza-Pneumococcus Coinfection. *Front Cell Infect Microbiol* 6: 60. <https://doi.org/10.3389/fcimb.2016.00060> PMID: 27379214
102. Opatowski L, Varon E, Dupont C, Temime L, van der Werf S, et al. (2013) Assessing pneumococcal meningitis association with viral respiratory infections and antibiotics: insights from statistical and mathematical models. *Proceedings Biological sciences / The Royal Society* 280: 20130519.
103. Shrestha S, Foxman B, Berus J, van Panhuis WG, Steiner C, et al. (2015) The role of influenza in the epidemiology of pneumonia. *Scientific Reports* 5: 15314. <https://doi.org/10.1038/srep15314> PMID: 26486591
104. Chien YW, Levin BR, Klugman KP (2012) The anticipated severity of a "1918-like" influenza pandemic in contemporary populations: The contribution of antibacterial interventions. *PLoS ONE* 7.
105. Crowe S, Utey M, Walker G, Grove P, Pagel C (2011) A model to evaluate mass vaccination against pneumococcus as a countermeasure against pandemic influenza. *Vaccine* 29: 5065–5077. <https://doi.org/10.1016/j.vaccine.2011.04.034> PMID: 21539879
106. Handel A, Longini IM, Antia R (2009) Intervention strategies for an influenza pandemic taking into account secondary bacterial infections. *Epidemics* 1: 185–195. <https://doi.org/10.1016/j.epidem.2009.09.001> PMID: 20161493
107. Shrestha S, Foxman B, Weinberger DM, Steiner C, Viboud C, et al. (2013) Identifying the Interaction Between Influenza and Pneumococcal Pneumonia Using Incidence Data. *Science Translational Medicine* 5: 191ra184–191ra184.
108. Arduin H, Domenech de Celles M, Guillemot D, Watier L, Opatowski L (2017) An agent-based model simulation of influenza interactions at the host level: insight into the influenza-related burden of pneumococcal infections. *BMC Infect Dis* 17: 382. <https://doi.org/10.1186/s12879-017-2464-z> PMID: 28577533
109. Yan AWC, Cao P, Heffernan JM, McVernon J, Quinn KM, et al. (2017) Modelling cross-reactivity and memory in the cellular adaptive immune response to influenza infection in the host. *Journal of Theoretical Biology* 413: 34–49. <https://doi.org/10.1016/j.jtbi.2016.11.008> PMID: 27856216
110. Cao P, Yan AWC, Heffernan JM, Petrie S, Moss RG, et al. (2015) Innate Immunity and the Inter-exposure Interval Determine the Dynamics of Secondary Influenza Virus Infection and Explain Observed Viral Hierarchies. *PLoS Comput Biol* 11: e1004334. <https://doi.org/10.1371/journal.pcbi.1004334> PMID: 26284917
111. Zakikhany K, Degail MA, Lamagni T, Waight P, Guy R, et al. (2011) Increase in invasive streptococcus pyogenes and streptococcus pneumoniae infections in England, December 2010 to January 2011. *Eurosurveillance* 16: 1–4.
112. Pinky L, Dobrovolny HM (2016) Coinfections of the Respiratory Tract: Viral Competition for Resources. *PLoS ONE* 11: e0155589. <https://doi.org/10.1371/journal.pone.0155589> PMID: 27196110
113. Kucharski AJ, Andreasen V, Gog JR (2016) Capturing the dynamics of pathogens with many strains. *J Math Biol* 72: 1–24. <https://doi.org/10.1007/s00285-015-0873-4> PMID: 25800537
114. Ferguson NM, Galvani AP, Bush RM (2003) Ecological and immunological determinants of influenza evolution. *Nature* 422: 428–433. <https://doi.org/10.1038/nature01509> PMID: 12660783
115. ACKERMAN E, LONGINI IM, SEAHOLM SK, HEDIN ÅS (1990) Simulation of Mechanisms of Viral Interference in Influenza. *International Journal of Epidemiology* 19: 444–454. PMID: 2376460
116. Merler S, Poletti P, Ajelli M, Caprile B, Manfredi P (2008) Coinfection can trigger multiple pandemic waves. *Journal of Theoretical Biology* 254: 499–507. <https://doi.org/10.1016/j.jtbi.2008.06.004> PMID: 18606170
117. Velasco-Hernández JX, Núñez-López M, Comas-García A, Cherpitel DEN, Ocampo MC, et al. (2015) Superinfection between Influenza and RSV Alternating Patterns in San Luis Potosí State, México. *PLoS ONE* 10: e0115674. <https://doi.org/10.1371/journal.pone.0115674> PMID: 25803450
118. Araz OM, Galvani A, Meyers LA (2012) Geographic prioritization of distributing pandemic influenza vaccines. *Health Care Management Science* 15: 175–187. <https://doi.org/10.1007/s10729-012-9199-6> PMID: 22618029
119. Sa Madhi, Klugman KP (2004) A role for Streptococcus pneumoniae in virus-associated pneumonia. *Nature medicine* 10: 811–813. <https://doi.org/10.1038/nm1077> PMID: 15247911
120. Simonsen L, Taylor RJ, Young-Xu Y, Haber M, May L, et al. (2011) Impact of pneumococcal conjugate vaccination of infants on pneumonia and influenza hospitalization and mortality in all age groups in the United States. *MBio* 2: e00309–00310. <https://doi.org/10.1128/mBio.00309-10> PMID: 21264063
121. Tsai Y-H, Hsieh M-J, Chang C-J, Wen Y-W, Hu H-C, et al. (2015) The 23-valent pneumococcal polysaccharide vaccine is effective in elderly adults over 75 years old—Taiwan's PPV vaccination program. *Vaccine* 33: 2897–2902. <https://doi.org/10.1016/j.vaccine.2015.04.068> PMID: 25936662



122. Fleming-Dutra KE, Hersh AL, Shapiro DJ, Bartoces M, Enns EA, et al. (2016) Prevalence of Inappropriate Antibiotic Prescriptions Among US Ambulatory Care Visits, 2010–2011. *JAMA* 315: 1864. <https://doi.org/10.1001/jama.2016.4151> PMID: 27139059
123. Polgreen PM, Yang M, Laxminarayan R, Cavanaugh JE (2011) Respiratory fluoroquinolone use and influenza. *Infection control and hospital epidemiology* 32: 706–709. <https://doi.org/10.1086/660859> PMID: 21666403
124. Mina MJ, Klugman KP, McCullers JA (2013) Live Attenuated Influenza Vaccine, But Not Pneumococcal Conjugate Vaccine, Protects Against Increased Density and Duration of Pneumococcal Carriage After Influenza Infection in Pneumococcal Colonized Mice. *Journal of Infectious Diseases* 208: 1281–1285. <https://doi.org/10.1093/infdis/jit317> PMID: 23852122
125. Muthuri SG, Venkatesan S, Myles PR, Leonardi-Bee J, Al Khuwaitir TSA, et al. (2014) Effectiveness of neuraminidase inhibitors in reducing mortality in patients admitted to hospital with influenza A H1N1pdm09 virus infection: a meta-analysis of individual participant data. *The Lancet Respiratory medicine* 2: 395–404. [https://doi.org/10.1016/S2213-2600\(14\)70041-4](https://doi.org/10.1016/S2213-2600(14)70041-4) PMID: 24815805
126. Fry AM (2014) Effectiveness of neuraminidase inhibitors for severe influenza. *The Lancet Respiratory Medicine*. pp. 346–348. [https://doi.org/10.1016/S2213-2600\(14\)70068-2](https://doi.org/10.1016/S2213-2600(14)70068-2) PMID: 24815800
127. McCullers Ja (2014) The public health policy implications of understanding metabiosis. *Cell host & microbe* 16: 3–4.
128. McCullers JA (2011) Preventing and treating secondary bacterial infections with antiviral agents. *Antivir Ther* 16: 123–135. <https://doi.org/10.3851/IMP1730> PMID: 21447860
129. McCullers Ja, Rehg JE (2002) Lethal synergism between influenza virus and *Streptococcus pneumoniae*: characterization of a mouse model and the role of platelet-activating factor receptor. *The Journal of infectious diseases* 186: 341–350. <https://doi.org/10.1086/341462> PMID: 12134230
130. Andrieu C, Doucet A, Holenstein R (2010) Particle Markov chain Monte Carlo methods. *Journal of the Royal Statistical Society Series B-Statistical Methodology* 72: 269–342.
131. King AA, Nguyen D, Ionides EL (2016) Statistical Inference for Partially Observed Markov Processes via the R Package pomp. *Journal of Statistical Software* 69.
132. Monto AS (2002) Epidemiology of viral respiratory infections. *The American Journal of Medicine* 112: 4–12.
133. Stewart M, Loschen W, Kass-Hout T Enabling ESSENCE to Process and Export Meaningful Use Syndromic Surveillance Data.
134. Warren-Gash C, Bhaskaran K, Hayward A, Leung GM, Lo S-V, et al. (2011) Circulating influenza virus, climatic factors, and acute myocardial infarction: a time series study in England and Wales and Hong Kong. *The Journal of infectious diseases* 203: 1710–1718. <https://doi.org/10.1093/infdis/jir171> PMID: 21606529
135. Mustaquim D (2014) The Evolution of the WHO/NREVSS Influenza Surveillance System: The Challenges and Opportunities that Accompany Electronic Laboratory Data. *Online Journal of Public Health Informatics* 6.
136. Zhao H, Green H, Lackenby A, Donati M, Ellis J, et al. (2014) A new laboratory-based surveillance system (Respiratory DataMart System) for influenza and other respiratory viruses in England: results and experience from 2009 to 2012. *Eurosurveillance* 19: 20680. PMID: 24480060
137. Wolf AI, Strauman MC, Mozdzanowska K, Whittle JRR, Williams KL, et al. (2014) Coinfection with *Streptococcus pneumoniae* Modulates the B Cell Response to Influenza Virus. *Journal of Virology* 88: 11995–12005. <https://doi.org/10.1128/JVI.01833-14> PMID: 25100838
138. Siegel Steven J, Roche Aoife M, Weiser Jeffrey N (2014) Influenza Promotes Pneumococcal Growth during Coinfection by Providing Host Sialylated Substrates as a Nutrient Source. *Cell Host & Microbe* 16: 55–67.
139. McCullers Ja, McAuley JL, Browall S, Iverson AR, Boyd KL, et al. (2010) Influenza enhances susceptibility to natural acquisition of and disease due to *Streptococcus pneumoniae* in ferrets. *The Journal of infectious diseases* 202: 1287–1295. <https://doi.org/10.1086/656333> PMID: 20822454
140. Peltola VT, Boyd KL, McAuley JL, Rehg JE, McCullers JA (2006) Bacterial sinusitis and otitis media following influenza virus infection in ferrets. *Infection and immunity* 74: 2562–2567. <https://doi.org/10.1128/IAI.74.5.2562-2567.2006> PMID: 16622191
141. Walters K-A, D’Agnillo F, Sheng Z-M, Kindrachuk J, Schwartzman LM, et al. (2016) 1918 pandemic influenza virus and *Streptococcus pneumoniae* co-infection results in activation of coagulation and widespread pulmonary thrombosis in mice and humans. *The Journal of Pathology* 238: 85–97. <https://doi.org/10.1002/path.4638> PMID: 26383585
142. Nakamura S, Davis KM, Weiser JN, Bogaert D, Groot RD, et al. (2011) Synergistic stimulation of type I interferons during influenza virus coinfection promotes *Streptococcus pneumoniae* colonization in

- mice. *Journal of Clinical Investigation* 121: 3657–3665. <https://doi.org/10.1172/JCI57762> PMID: 21841308
143. Walter ND, Taylor TH, Shay DK, Thompson WW, Brammer L, et al. (2010) Influenza circulation and the burden of invasive pneumococcal pneumonia during a non-pandemic period in the United States. *Clinical infectious diseases: an official publication of the Infectious Diseases Society of America* 50: 175–183.
  144. Nelson GE, Gershman Ka, Swerdlow DL, Beall BW, Moore MR (2012) Invasive pneumococcal disease and pandemic (H1N1) 2009, Denver, Colorado, USA. *Emerging infectious diseases* 18: 208–216. <https://doi.org/10.3201/eid1802.110714> PMID: 22306234
  145. Jansen AGSC, Sanders EAM, VAN DER Ende A, VAN Loon AM, Hoes AW, et al. (2008) Invasive pneumococcal and meningococcal disease: association with influenza virus and respiratory syncytial virus activity? *Epidemiology and Infection* 136: 1448–1454. <https://doi.org/10.1017/S0950268807000271> PMID: 18211724
  146. Kuster SP, Tuite AR, Kwong JC, McGeer A, Fisman DN (2011) Evaluation of coseasonality of influenza and invasive pneumococcal disease: results from prospective surveillance. *PLoS Med* 8: e1001042. <https://doi.org/10.1371/journal.pmed.1001042> PMID: 21687693
  147. Ampofo K, Bender J, Sheng X, Korgenski K, Daly J, et al. (2008) Seasonal invasive pneumococcal disease in children: role of preceding respiratory viral infection. *Pediatrics* 122: 229–237. <https://doi.org/10.1542/peds.2007-3192> PMID: 18676537
  148. Grabowska K, Hogberg L, Penttinen P, Svensson A, Ekdahl K (2006) Occurrence of invasive pneumococcal disease and number of excess cases due to influenza. *BMC Infect Dis* 6: 58. <https://doi.org/10.1186/1471-2334-6-58> PMID: 16549029
  149. Murdoch DR, Jennings LC (2009) Association of respiratory virus activity and environmental factors with the incidence of invasive pneumococcal disease. *J Infect* 58: 37–46. <https://doi.org/10.1016/j.jinf.2008.10.011> PMID: 19042025
  150. Edwards LJ, Markey PG, Cook HM, Trauer JM, Krause VL (2011) The relationship between influenza and invasive pneumococcal disease in the Northern Territory, 2005–2009. *Med J Aust* 194: 207. PMID: 21401468
  151. Weinberger DM, Harboe ZB, Viboud C, Krause TG, Miller M, et al. (2014) Pneumococcal disease seasonality: incidence, severity and the role of influenza activity. *Eur Respir J* 43: 833–841. <https://doi.org/10.1183/09031936.00056813> PMID: 24036243
  152. Grijalva CG, Griffin MR, Edwards KM, Williams JV, Gil AI, et al. (2014) The role of influenza and parainfluenza infections in nasopharyngeal pneumococcal acquisition among young children. *Clin Infect Dis* 58: 1369–1376. <https://doi.org/10.1093/cid/ciu148> PMID: 24621951
  153. Zhou H, Haber M, Ray S, Farley MM, Panozzo CA, et al. (2012) Invasive pneumococcal pneumonia and respiratory virus co-infections. *Emerging infectious diseases* 18: 294–297. <https://doi.org/10.3201/eid1802.102025> PMID: 22305270
  154. Damasio GAC, Pereira LA, Moreira SDR, Duarte dos Santos CN, Dalla-Costa LM, et al. (2015) Does virus-bacteria coinfection increase the clinical severity of acute respiratory infection? *Journal of Medical Virology* 87: 1456–1461. <https://doi.org/10.1002/jmv.24210> PMID: 25976175
  155. Niemann S, Ehrhardt C, Medina E, Warnking K, Tuchscher L, et al. (2012) Combined action of influenza virus and *Staphylococcus aureus* panton-valentine leukocidin provokes severe lung epithelium damage. *The Journal of infectious diseases* 206: 1138–1148. <https://doi.org/10.1093/infdis/jis468> PMID: 22837490
  156. Davison VE, Sanford BA (1982) Factors influencing adherence of *Staphylococcus aureus* to influenza A virus-infected cell cultures. *Infection and Immunity* 37: 946–955. PMID: 6813268
  157. Zhang WJ, Sarawar S, Nguyen P, Daly K, Rehg JE, et al. (1996) Lethal synergism between influenza infection and staphylococcal enterotoxin B in mice. *J Immunol* 157: 5049–5060. PMID: 8943414
  158. Chertow DS, Kindrachuk J, Sheng Z-M, Pujanauski LM, Cooper K, et al. (2016) Influenza A and Methicillin-resistant *Staphylococcus aureus* Co-infection in Rhesus Macaques -- A Model of Severe Pneumonia. *Antiviral Research*.
  159. Iverson AR, Boyd KL, McAuley JL, Plano LR, Hart ME, et al. (2011) Influenza virus primes mice for pneumonia from *Staphylococcus aureus*. *The Journal of infectious diseases* 203: 880–888. <https://doi.org/10.1093/infdis/jiq113> PMID: 21278211
  160. Robinson KM, Choi SM, McHugh KJ, Mandalapu S, Enelow RI, et al. (2013) Influenza A Exacerbates *Staphylococcus aureus* Pneumonia by Attenuating IL-1 Production in Mice. *The Journal of Immunology* 191: 5153–5159. <https://doi.org/10.4049/jimmunol.1301237> PMID: 24089191
  161. Sherertz RJ, Reagan DR, Hampton KD, Robertson KL, Streed SA, et al. (1996) A cloud adult: the *Staphylococcus aureus*-virus interaction revisited. *Ann Intern Med* 124: 539–547. PMID: 8597316



162. Hageman JC, Uyeki TM, Francis JS, Jernigan DB, Wheeler JG, et al. (2006) Severe community-acquired pneumonia due to *Staphylococcus aureus*, 2003–04 influenza season. *Emerging infectious diseases* 12: 894–899. <https://doi.org/10.3201/eid1206.051141> PMID: 16707043
163. Finelli L, Fiore A, Dhara R, Brammer L, Shay DK, et al. (2008) Influenza-associated pediatric mortality in the United States: increase of *Staphylococcus aureus* coinfection. *Pediatrics* 122: 805–811. <https://doi.org/10.1542/peds.2008-1336> PMID: 18829805
164. Reed C, Kallen AJ, Patton M, Arnold KE, Farley MM, et al. (2009) Infection With Community-Onset *Staphylococcus aureus* and Influenza Virus in Hospitalized Children. *The Pediatric Infectious Disease Journal* 28: 572–576. <https://doi.org/10.1097/INF.0b013e31819d8b71> PMID: 19478685
165. Kobayashi SD, Olsen RJ, LaCasse RA, Safronetz D, Ashraf M, et al. (2013) Seasonal H3N2 influenza A virus fails to enhance *Staphylococcus aureus* co-infection in a non-human primate respiratory tract infection model. *Virulence* 4: 707–715. <https://doi.org/10.4161/viru.26572> PMID: 24104465
166. Michaels RH, Myerowitz RL, Klaw R (1977) Potentiation of experimental meningitis due to *Haemophilus influenzae* by influenza A virus. *The Journal of infectious diseases* 135: 641–645. PMID: 300760
167. Bakaletz LO, Hoepf TM, Demaria TF, Lim DJ (1988) The Effect of Antecedent Influenza A Virus Infection on the Adherence of *Hemophilus Influenzae* to Chinchilla Tracheal Epithelium. *Am ~ Otolaryngol* 9: 127–134.
168. Francis T, De Torregrosa MV (1945) Combined infection of mice with *H. Influenzae* and influenza virus by the intranasal route. *Journal of Infectious Diseases* 76: 70–77.
169. Read RC, Goodwin L, Parsons MA, Silcocks P, Kaczmarek EB, et al. (1999) Coinfection with influenza B virus does not affect association of *Neisseria meningitidis* with human nasopharyngeal mucosa in organ culture. *Infection and immunity* 67: 3082–3086. PMID: 10338524
170. Cartwright KA, Jones DM, Smith AJ, Stuart JM, Kaczmarek EB, et al. (1991) Influenza A and meningococcal disease. *Lancet (London, England)* 338: 554–557.
171. Jacobs JH, Viboud C, Tchetgen ET, Schwartz J, Steiner C, et al. (2014) The Association of Meningococcal Disease with Influenza in the United States, 1989–2009. *PLoS ONE* 9: e107486. <https://doi.org/10.1371/journal.pone.0107486> PMID: 25265409
172. Brundage JF (2006) Interactions between influenza and bacterial respiratory pathogens: implications for pandemic preparedness. *The Lancet Infectious diseases* 6: 303–312. [https://doi.org/10.1016/S1473-3099\(06\)70466-2](https://doi.org/10.1016/S1473-3099(06)70466-2) PMID: 16631551
173. Makras P, Alexiou-Daniel S, Antoniadis A, Hatzigeorgiou D (2001) Outbreak of meningococcal disease after an influenza B epidemic at a Hellenic Air Force recruit training center. *Clinical infectious diseases: an official publication of the Infectious Diseases Society of America* 33: e48–50.
174. Florido M, Pillay R, Gillis CM, Xia Y, Turner SJ, et al. (2015) Epitope-specific CD4+, but not CD8+, T-cell responses induced by recombinant influenza A viruses protect against *Mycobacterium tuberculosis* infection. *European Journal of Immunology* 45: 780–793. <https://doi.org/10.1002/eji.201444954> PMID: 25430701
175. Volkert M, Pierce C, Horsfall FL, Dubos RJ (1947) THE ENHANCING EFFECT OF CONCURRENT INFECTION WITH PNEUMOTROPIC VIRUSES ON PULMONARY TUBERCULOSIS IN MICE. *The Journal of experimental medicine* 86: 203–214. PMID: 19871671
176. Redford PS, Mayer-Barber KD, McNab FW, Stavropoulos E, Wack A, et al. (2014) Influenza A virus impairs control of *Mycobacterium tuberculosis* coinfection through a type I interferon receptor-dependent pathway. *The Journal of infectious diseases* 209: 270–274. <https://doi.org/10.1093/infdis/jit424> PMID: 23935205
177. Walaza S, Cohen C, Nanoo A, Cohen AL, McAnerney J, et al. (2015) Excess mortality associated with influenza among tuberculosis deaths in South Africa, 1999–2009. *PLoS ONE* 10: 1999–2009.
178. Oei W, Nishiura H, Oei W, Nishiura H (2012) The Relationship between Tuberculosis and Influenza Death during the Influenza (H1N1) Pandemic from 1918–19. *Computational and Mathematical Methods in Medicine* 2012: 1–9.
179. Noymer A (2011) The 1918 influenza pandemic hastened the decline of tuberculosis in the United States: An age, period, cohort analysis. *Vaccine* 29: B38–B41. <https://doi.org/10.1016/j.vaccine.2011.02.053> PMID: 21757102
180. Noymer A (2009) Testing the influenza–tuberculosis selective mortality hypothesis with Union Army data. *Social Science & Medicine* 68: 1599–1608.
181. Zürcher K, Zwahlen M, Ballif M, Rieder HL, Egger M, et al. (2016) Influenza Pandemics and Tuberculosis Mortality in 1889 and 1918: Analysis of Historical Data from Switzerland. *PLoS ONE* 11: e0162575. <https://doi.org/10.1371/journal.pone.0162575> PMID: 27706149
182. Roth S, Whitehead S, Thamthitawat S, Chittaganpitch M, Maloney SA, et al. (2013) Concurrent influenza virus infection and tuberculosis in patients hospitalized with respiratory illness in Thailand.

- Influenza and other Respiratory Viruses 7: 244–248. <https://doi.org/10.1111/j.1750-2659.2012.00413.x> PMID: 22817684
183. Klonoski JM, Hurtig HR, Juber BA, Schuneman MJ, Bickett TE, et al. (2014) Vaccination against the M protein of *Streptococcus pyogenes* prevents death after influenza virus:*S. pyogenes* super-infection. *Vaccine* 32: 5241–5249. <https://doi.org/10.1016/j.vaccine.2014.06.093> PMID: 25077423
  184. Okamoto S, Kawabata S, Nakagawa I, Okuno Y, Goto T, et al. (2003) Influenza A Virus-Infected Hosts Boost an Invasive Type of *Streptococcus pyogenes* Infection in Mice. *Journal of Virology* 77: 4104–4112. <https://doi.org/10.1128/JVI.77.7.4104-4112.2003> PMID: 12634369
  185. Okamoto S, Kawabata S, Terao Y, Fujitaka H, Okuno Y, et al. (2004) The *Streptococcus pyogenes* Capsule Is Required for Adhesion of Bacteria to Virus-Infected Alveolar Epithelial Cells and Lethal Bacterial-Viral Superinfection. *Infection and Immunity* 72: 6068–6075. <https://doi.org/10.1128/IAI.72.10.6068-6075.2004> PMID: 15385511
  186. Hafez MM, Abdel-Wahab KSE, El-Fouhil DFI (2010) Augmented adherence and internalization of group A *Streptococcus pyogenes* to influenza A virus infected MDCK cells. *Journal of Basic Microbiology* 50: S46–S57. <https://doi.org/10.1002/jobm.200900427> PMID: 20967785
  187. Scaber J, Saeed S, Ihekweazu C, Efstratiou A, McCarthy N, et al. (2011) Group A streptococcal infections during the seasonal influenza outbreak 2010/11 in South East England. *Euro Surveill* 16.
  188. Tasher D, Stein M, Simões EAF, Shohat T, Bromberg M, et al. (2011) Invasive bacterial infections in relation to influenza outbreaks, 2006–2010. *Clinical infectious diseases: an official publication of the Infectious Diseases Society of America* 53: 1199–1207.
  189. Tamayo E, Montes M, Vicente D, Pérez-Trallero E, Welch C, et al. (2016) *Streptococcus pyogenes* Pneumonia in Adults: Clinical Presentation and Molecular Characterization of Isolates 2006–2015. *PLoS ONE* 11: e0152640. <https://doi.org/10.1371/journal.pone.0152640> PMID: 27027618
  190. Anestad G, Vainio K, Hungnes O (2007) Interference between outbreaks of epidemic viruses. *Scandinavian journal of infectious diseases* 39: 653–654. <https://doi.org/10.1080/00365540701253860> PMID: 17577842
  191. Anestad G (2009) Surveillance of respiratory viral infections by rapid immunofluorescence diagnosis, with emphasis on virus interference. *Epidemiology and Infection* 99: 523.
  192. Anestad G (1987) Surveillance of respiratory viral infections by rapid immunofluorescence diagnosis, with emphasis on virus interference. *Epidemiol Infect* 99: 523–531. PMID: 2824225
  193. Nishimura N, Nishio H, Lee MJ, Uemura K (2005) The clinical features of respiratory syncytial virus: lower respiratory tract infection after upper respiratory tract infection due to influenza virus. *Pediatr Int* 47: 412–416. <https://doi.org/10.1111/j.1442-200x.2005.02099.x> PMID: 16091079
  194. van Asten L, Bijkerk P, Fanoy E, van Ginkele A, Suijkerbuijk A, et al. (2016) Early occurrence of influenza A epidemics coincided with changes in occurrence of other respiratory virus infections. *Influenza and other respiratory viruses* 10: 14–26. <https://doi.org/10.1111/irv.12348> PMID: 26369646
  195. Meningher T, Hindiyyeh M, Regev L, Sherbany H, Mendelson E, et al. (2014) Relationships between A (H1N1)pdm09 influenza infection and infections with other respiratory viruses. *Influenza and other respiratory viruses* 8: 422–430. <https://doi.org/10.1111/irv.12249> PMID: 24698156
  196. Martin ET, Fairchok MP, Stednick ZJ, Kuypers J, Englund JA (2013) Epidemiology of multiple respiratory viruses in childcare attendees. *The Journal of infectious diseases* 207: 982–989. <https://doi.org/10.1093/infdis/jis934> PMID: 23288925
  197. Shinjoh M, Omoe K, Saito N, Matsuo N, Nerome K (2000) In vitro growth profiles of respiratory syncytial virus in the presence of influenza virus. *Acta Virol* 44: 91–97. PMID: 10989700
  198. Linde A, Rotzen-Ostlund M, Zweyberg-Wirgart B, Rubinova S, Brytting M (2009) Does viral interference affect spread of influenza? *Euro Surveill* 14.
  199. Anestad G, Nordbo SA (2011) Virus interference. Did rhinoviruses activity hamper the progress of the 2009 influenza A (H1N1) pandemic in Norway? *Med Hypotheses* 77: 1132–1134. <https://doi.org/10.1016/j.mehy.2011.09.021> PMID: 21975051
  200. Tanner H, Boxall E, Osman H (2012) Respiratory viral infections during the 2009–2010 winter season in Central England, UK: incidence and patterns of multiple virus co-infections. *European journal of clinical microbiology & infectious diseases: official publication of the European Society of Clinical Microbiology* 31: 3001–3006.
  201. Mackay IM, Lambert SB, Faux CE, Arden KE, Nissen MD, et al. (2013) Community-wide, contemporaneous circulation of a broad spectrum of human rhinoviruses in healthy Australian preschool-aged children during a 12-month period. *The Journal of infectious diseases* 207: 1433–1441. <https://doi.org/10.1093/infdis/jis476> PMID: 22829638
  202. Easton AJ, Scott PD, Edworthy NL, Meng B, Marriott AC, et al. (2011) A novel broad-spectrum treatment for respiratory virus infections: influenza-based defective interfering virus provides protection

against pneumovirus infection in vivo. *Vaccine* 29: 2777–2784. <https://doi.org/10.1016/j.vaccine.2011.01.102> PMID: 21320545

- 203.** Goto H, Ihira H, Morishita K, Tsuchiya M, Ohta K, et al. (2016) Enhanced growth of influenza A virus by coinfection with human parainfluenza virus type 2. *Med Microbiol Immunol* 205: 209–218. <https://doi.org/10.1007/s00430-015-0441-y> PMID: 26582554