



**HAL**  
open science

## High circulating CD4+CD25[hi]FOXP3+ T cell subpopulation early after lung transplantation is associated with development of BOS

Maxim Durand, Philippe Lacoste, Richard Danger, Lola Jacquemont, Carole Brosseau, Eugénie Durand, Gaëlle Tilly, Jennifer Loy, Aurore Foureau, Pierre-Joseph Royer, et al.

### ► To cite this version:

Maxim Durand, Philippe Lacoste, Richard Danger, Lola Jacquemont, Carole Brosseau, et al.. High circulating CD4+CD25[hi]FOXP3+ T cell subpopulation early after lung transplantation is associated with development of BOS. ISHLT, Apr 2018, Nice, France. inserm-02161020

**HAL Id: inserm-02161020**

**<https://inserm.hal.science/inserm-02161020>**

Submitted on 20 Jun 2019

**HAL** is a multi-disciplinary open access archive for the deposit and dissemination of scientific research documents, whether they are published or not. The documents may come from teaching and research institutions in France or abroad, or from public or private research centers.

L'archive ouverte pluridisciplinaire **HAL**, est destinée au dépôt et à la diffusion de documents scientifiques de niveau recherche, publiés ou non, émanant des établissements d'enseignement et de recherche français ou étrangers, des laboratoires publics ou privés.



Maxim Durand<sup>1,2,3†</sup>, Philippe Lacoste<sup>4,5†</sup>, Richard Danger<sup>1,2</sup>, Lola Jacquemont<sup>1,2</sup>, Carole Brosseau<sup>1,2</sup>, Eugénie Durand<sup>1,2</sup>, Gaele Tilly<sup>1,2</sup>, Jennifer Loy<sup>4,5</sup>, Aurore Foureau<sup>4,5</sup>, Pierre-Joseph Royer<sup>4,5</sup>, Adrien Tissot<sup>1-5</sup>, Antoine Magnan<sup>4,5,\$</sup>, Sophie Brouard<sup>1,2,6,\$</sup> & COLT and SysCLAD Consortia\*

<sup>1</sup> Centre de Recherche en Transplantation et Immunologie UMR 1064, INSERM, Université de Nantes, Nantes, France.

<sup>2</sup> Institut de Transplantation Urologie Néphrologie (ITUN), CHU Nantes, Nantes, France.

<sup>3</sup> Faculté de Médecine, Université de Nantes, Nantes, France

<sup>4</sup> Institut du thorax, Inserm UMR 1087, CNRS UMR 6291, Université de Nantes, Nantes, France

<sup>5</sup> Institut du thorax, CHU de Nantes, Nantes, France

<sup>6</sup> Centre d'Investigation Clinique (CIC) Biothérapie, CHU Nantes, Nantes, France

\* Contact : [sophie.brouard@univ-nantes.fr](mailto:sophie.brouard@univ-nantes.fr), CRTI, ITUN INSERM 1064, 30 Boulevard Jean Monnet, Nantes, France

[www.itun.nantes.inserm.fr](http://www.itun.nantes.inserm.fr)

## Context

Chronic Bronchiolitis Obliterans Syndrome (BOS) remains a major limitation for long-term survival after lung transplantation. The immune mechanisms involved and predictive biomarkers have still to be identified.

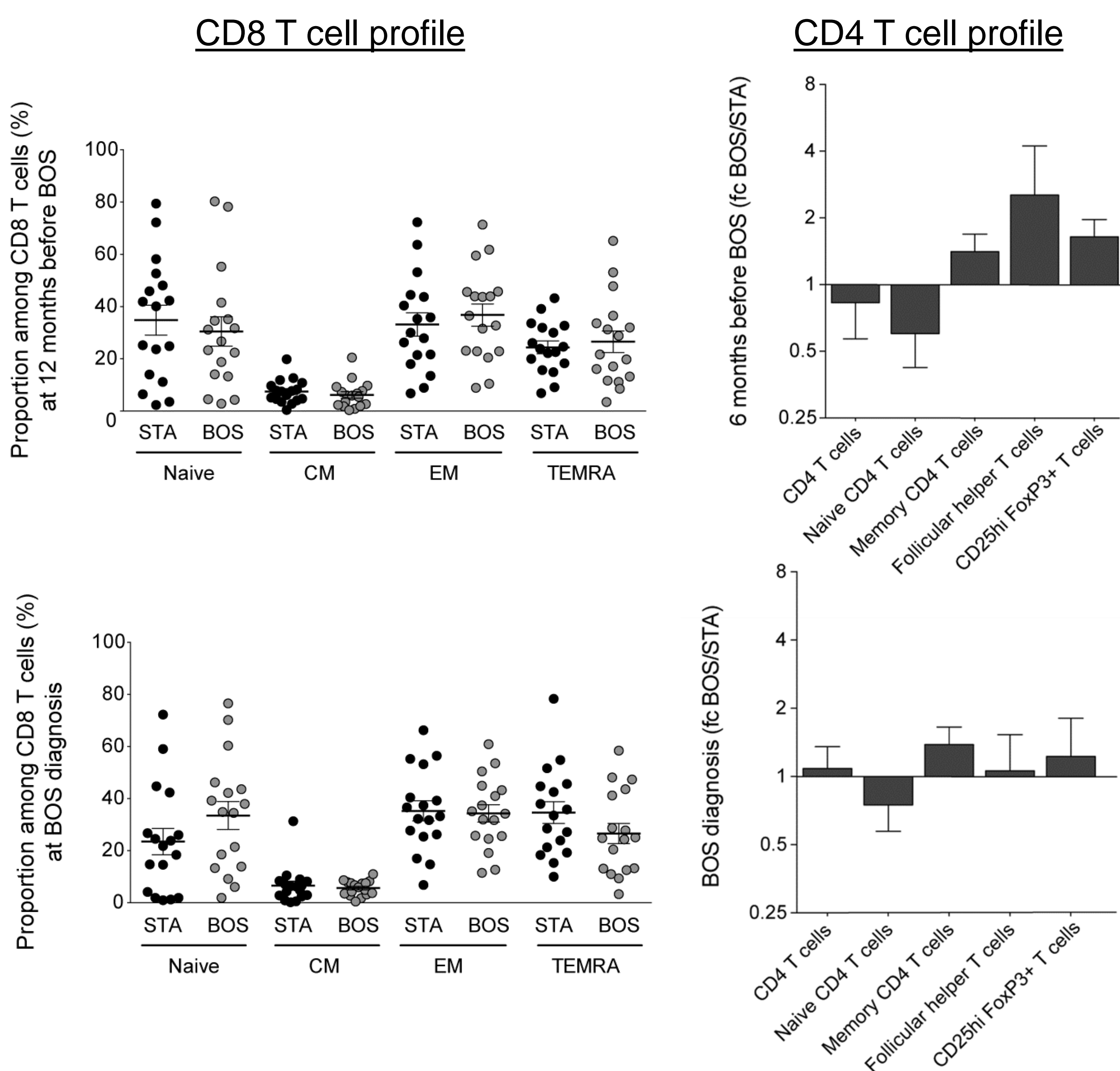
The purpose of this study was to assess whether the peripheral blood T-lymphocyte profile could predict BOS in lung transplant recipients.

## Material

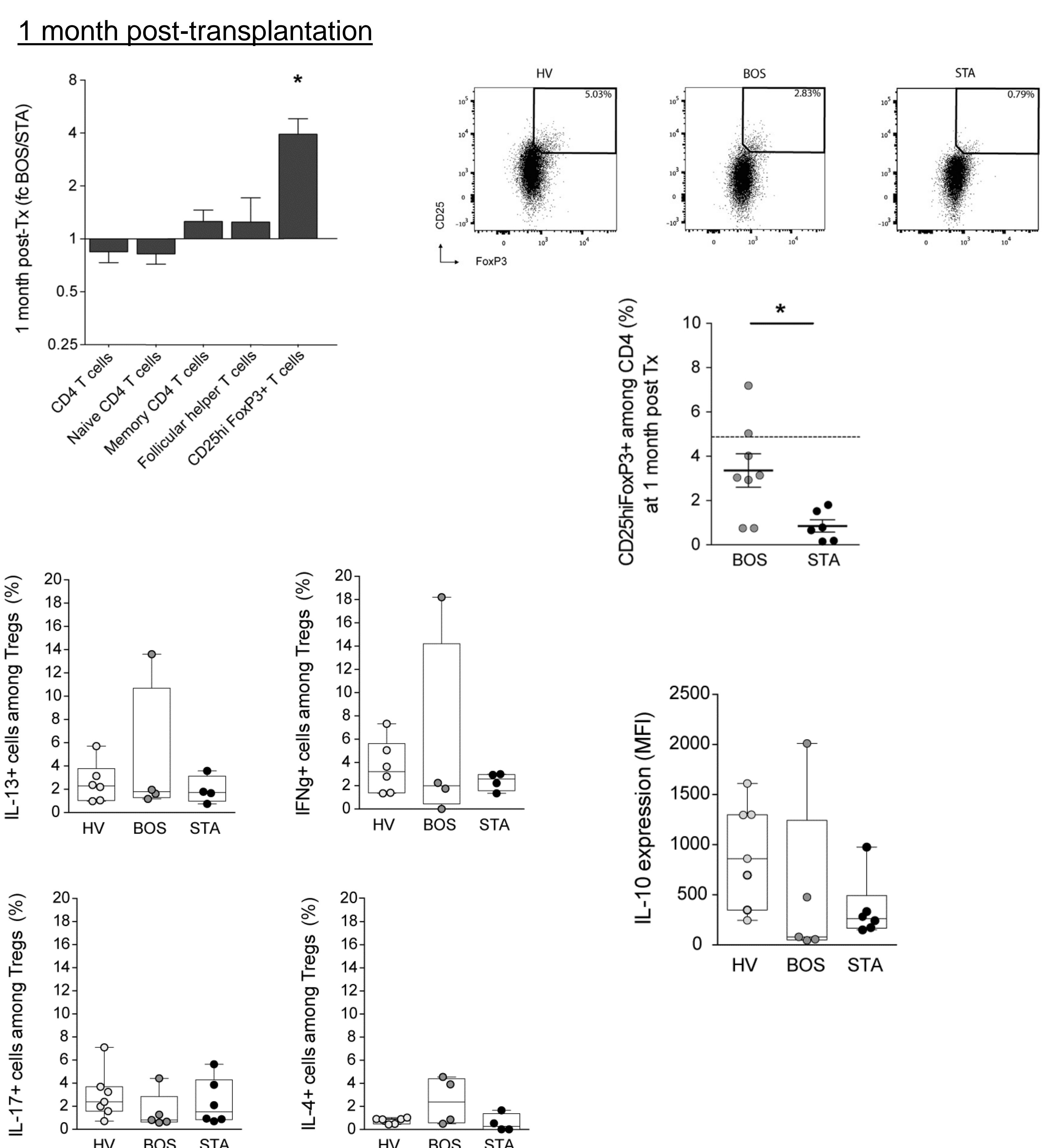
An in-depth profiling of CD4 and CD8 T cells was prospectively performed on blood cells from stable and BOS patients from the COLT cohort with a longitudinal follow-up. Samples were analyzed at 1 and 6 months after transplantation, at the time of BOS diagnosis, and at an intermediate time point at 6 to 12 months before BOS diagnosis.

## Results

No difference in the CD4 and CD8 T cells profile at the BOS diagnosis and months before.

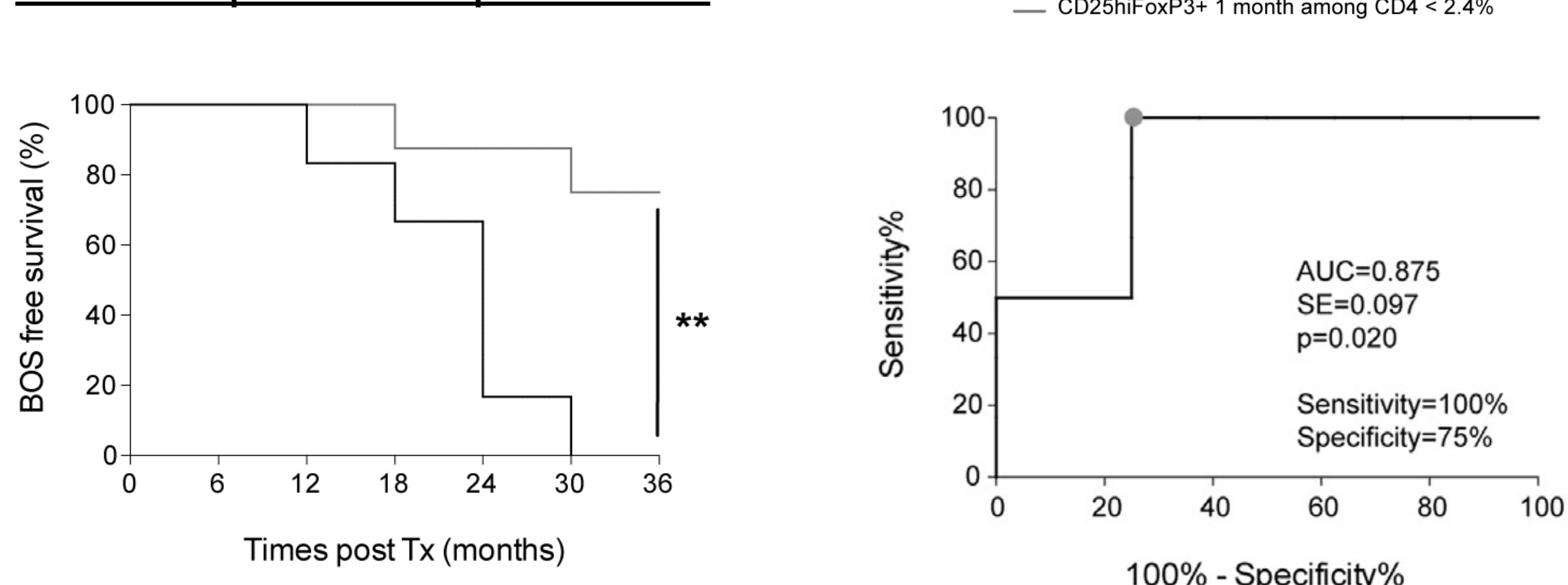


Early modification at 1 month and 6 months post-transplantation of circulating CD4<sup>+</sup>CD25<sup>hi</sup>FoxP3<sup>+</sup> T cells proportion in BOS patients.

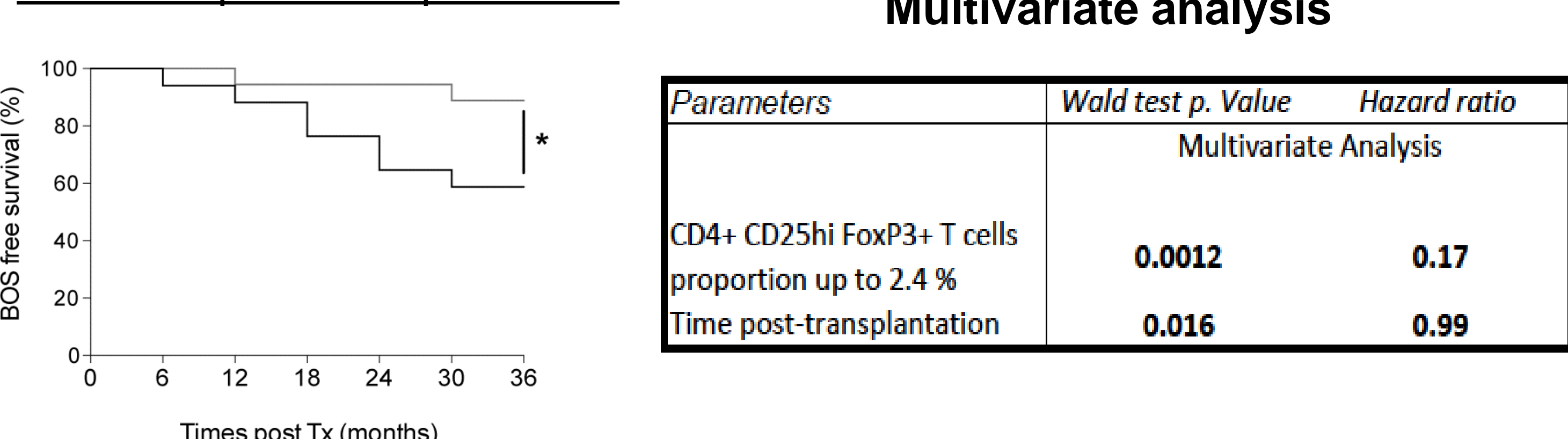


Tregs proportion > 2.4% in the 6 months post-transplantation is an independent risk factor of BOS development

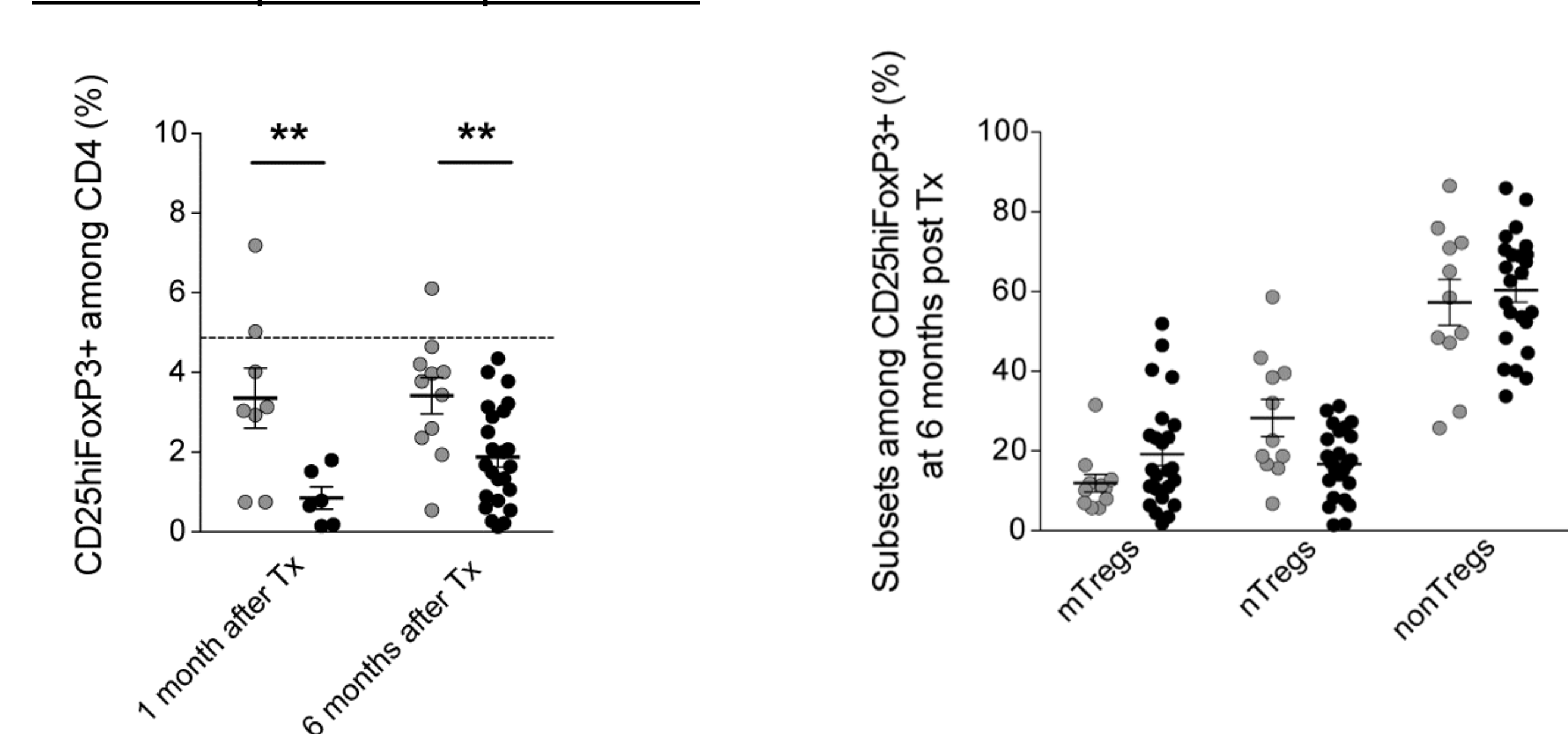
1 month post-transplantation



6 months post-transplantation



6 months post-transplantation



## Conclusion & long-term prospects

Whereas no significant difference was found for T cell compartments at BOS diagnosis or several months before, we report an increase in the CD4<sup>+</sup>CD25<sup>hi</sup>FoxP3<sup>+</sup> T cell subpopulation in BOS patients at 1 and 6 months after transplantation. A CD4<sup>+</sup>CD25<sup>hi</sup>FoxP3<sup>+</sup> T cell threshold of 2.4% discriminated BOS and stable patients at 1 month post-transplantation. This was validated on a second set of patients at 6 months post-transplantation. Patients with a proportion of CD4<sup>+</sup>CD25<sup>hi</sup>FoxP3<sup>+</sup> T cells up to 2.4% in the 6 months following transplantation had a 2-fold higher risk of developing BOS.

This study is the first to report an increased proportion of circulating CD4<sup>+</sup>CD25<sup>hi</sup>FoxP3<sup>+</sup> T cells early post-transplantation in lung recipients who will develop BOS within 3 years, and support for its use as a BOS predictive biomarker.