



MD1003 (high-dose biotin) for the treatment of progressive multiple sclerosis: A randomised, double-blind, placebo-controlled study

Ayman Tourbah, Christine Lebrun Frenay, Gilles Edan, Michel Clanet, Caroline Papeix, Sandra Vukusic, Jerome de Sèze, Marc Debouverie, Olivier Gout, Pierre Clavelou, et al.

► To cite this version:

Ayman Tourbah, Christine Lebrun Frenay, Gilles Edan, Michel Clanet, Caroline Papeix, et al.. MD1003 (high-dose biotin) for the treatment of progressive multiple sclerosis: A randomised, double-blind, placebo-controlled study. Multiple Sclerosis Journal, 2016, 22 (13), pp.1719–1731. 10.1177/1352458516667568Multiple . inserm-02153440

HAL Id: inserm-02153440

<https://inserm.hal.science/inserm-02153440>

Submitted on 12 Jun 2019

HAL is a multi-disciplinary open access archive for the deposit and dissemination of scientific research documents, whether they are published or not. The documents may come from teaching and research institutions in France or abroad, or from public or private research centers.

L'archive ouverte pluridisciplinaire **HAL**, est destinée au dépôt et à la diffusion de documents scientifiques de niveau recherche, publiés ou non, émanant des établissements d'enseignement et de recherche français ou étrangers, des laboratoires publics ou privés.

MD1003 (high-dose biotin) for the treatment of progressive multiple sclerosis: A randomised, double-blind, placebo-controlled study

Ayman Tourbah, Christine Lebrun-Frenay, Gilles Edan, Michel Clanet, Caroline Papeix, Sandra Vukusic, Jerome De Sèze, Marc Debouverie, Olivier Gout, Pierre Clavelou, Gilles Defer, David-Axel Laplaud, Thibault Moreau, Pierre Labauge, Bruno Brochet, Frédéric Sedel and Jean Pelletier; on behalf of the MS-SPI study group

Abstract

Background: Treatment with MD1003 (high-dose biotin) showed promising results in progressive multiple sclerosis (MS) in a pilot open-label study.

Objective: To confirm the efficacy and safety of MD1003 in progressive MS in a double-blind, placebo-controlled study.

Methods: Patients ($n=154$) with a baseline Expanded Disability Status Scale (EDSS) score of 4.5–7 and evidence of disease worsening within the previous 2 years were randomised to 12-month MD1003 (100 mg biotin) or placebo thrice daily, followed by 12-month MD1003 for all patients. The primary endpoint was the proportion of patients with disability reversal at month 9, confirmed at month 12, defined as an EDSS decrease of ≥ 1 point (≥ 0.5 for EDSS 6–7) or a $\geq 20\%$ decrease in timed 25-foot walk time compared with the best baseline among screening or randomisation visits.

Results: A total of 13 (12.6%) MD1003-treated patients achieved the primary endpoint versus none of the placebo-treated patients ($p=0.005$). MD1003 treatment also reduced EDSS progression and improved clinical impression of change compared with placebo. Efficacy was maintained over follow-up, and the safety profile of MD1003 was similar to that of placebo.

Conclusion: MD1003 achieves sustained reversal of MS-related disability in a subset of patients with progressive MS and is well tolerated.

Keywords: Multiple sclerosis, primary progressive multiple sclerosis, secondary progressive multiple sclerosis, high-dose biotin, MD1003, clinical trial, disability progression

Date received: 17 June 2016; revised: 22 July 2016; accepted: 4 August 2016

Introduction

Multiple sclerosis (MS) is the most common disabling neurological disease of young adults.¹ Both primary progressive multiple sclerosis (PPMS) and secondary progressive multiple sclerosis (SPMS) diseases are part of the same progressive disease spectrum which can be further split into ‘active’ and ‘not-active’ progressive disease based on the presence or absence of inflammatory activity demonstrated either clinically or radiologically.^{2,3} Disability worsening in not-active progressive MS is mainly due to chronic demyelination and mitochondrial dysfunction, both of which result in virtual hypoxia leading to

axonal degeneration.^{4–6} Although anti-CD20, mitoxantrone and interferons have shown some efficacy in patients with active progressive disease,^{7–9} there is still no approved disease-modifying therapy (DMT) in patients with not-active progressive MS, which represents a significant unmet medical need.¹⁰

MD1003 is an oral formulation of high-dose pharmaceutical-grade biotin (10,000 times the recommended daily intake) that recently demonstrated promising efficacy in patients with not-active progressive MS.¹¹ Over 90% of the patients ($N=23$) treated for 2–36 months in an open-label pilot study had some

Multiple Sclerosis Journal

2016, Vol. 22(13) 1719–1731

DOI: 10.1177/

1352458516667568

© The Author(s), 2016.



Reprints and permissions:
[http://www.sagepub.co.uk/
journalsPermissions.nav](http://www.sagepub.co.uk/journalsPermissions.nav)

Correspondence to:

A Tourbah

Department of Neurology
and Faculté de Médecine
de Reims, CHU de Reims,
URCA, 45 rue Cognacq-Jay,
51092 REIMS CEDEX,
France.

atourbah@chu-reims.fr

Ayman Tourbah

Department of Neurology
and Faculté de Médecine
de Reims, CHU de Reims,
URCA, Reims, France

Christine Lebrun-Frenay

Department of Neurology
and Faculté de Médecine de
Nice-Sophia Antipolis, Nice,
France

Gilles Edan

Service de Neurologie,
CHU de Rennes, CICP 1414
INSERM, Rennes, France

Michel Clanet

Department of Neurology,
CHU de Toulouse, Toulouse,
France

Caroline Papeix

Department of Neurology,
GH Pitié Salpêtrière, Paris,
France

Sandra Vukusic

Department of Neurology
A, Hospices Civils de Lyon,
Lyon, France

Jerome De Sèze

Department of Neurology
and Clinical Investigation
Center, CHU de Strasbourg,
INSERM 1434, Strasbourg,
France

Marc Debouverie

Department of Neurology,
CHU de Nancy, Nancy,
France

Olivier Gout

Department of Neurology,
Fondation Ophtalmologique
Adolphe de Rothschild, Paris,
France

Pierre Clavelou

Department of Neurology,
CHU de Clermont-Ferrand,
Clermont-Ferrand, France

Gilles Defer

Department of Neurology,
CHU de Caen, Caen, France

David-Axel Laplaud
Department of Neurology,
CHU de Nantes, CIC015
INSERM, INSERM CR1064,
Nantes, France

Thibault Moreau
Department of Neurology,
University Hospital of Dijon,
Dijon, France

Pierre Labauge
Department of Neurology,
CHU de Montpellier,
Montpellier, France

Bruno Brochet
Department of Neurology,
CHU de Bordeaux,
Bordeaux, France

Frédéric Sedel
MedDay Pharmaceuticals,
Paris, France

Jean Pelletier
APHM, Hôpital de la
Timone, CNRS, CRMBM
UMR 7339, CNRS,
Department of Neurology
and Aix-Marseille Université,
Marseille, France

degree of clinical improvement, including Expanded Disability Status Scale (EDSS) reductions in 22%.¹¹ Biotin is a cofactor for four essential carboxylases: acetyl-CoA carboxylase (expressed in oligodendrocytes) generates malonyl-CoA, the building block for fatty acid synthesis, whereas pyruvate carboxylase, 3-methylcrotonyl-CoA carboxylase and propionyl-CoA carboxylase (expressed in neurons) produce intermediates for the tricarboxylic acid cycle.¹² MD1003 may thus be activating carboxylases to support myelin repair (by enhancing fatty acid synthesis) and protecting against hypoxia-driven axonal degeneration (by enhancing energy production in neurons).^{11,12} Based on this unique mechanism of action and previous clinical observations, this study was designed to assess whether MD1003 could reverse disability progression in patients with not-active progressive MS.

Methods

Study design

Study MS-SPI was a 12-month randomised, double-blind, placebo-controlled trial followed by an open-label 12-month extension phase where all patients received MD1003. The study was conducted at 16 French MS reference centres in accordance with Good Clinical Practice. The study was approved by an independent ethical committee (Comité de Protection des Personnes Est 1, Dijon, France; approval number: CPP EST I: 2013/36) and was overseen by an independent data monitoring committee.

Participants

Eligible patients were 18–75 years old with PPMS or SPMS that fulfilled revised McDonald and Lublin criteria with clinical evidence of spastic paraparesis. Patients with clinical or radiological evidence of inflammatory activity within the previous year were excluded. Eligible patients had a baseline EDSS of 4.5–7 with evidence of disease progression during the previous 2 years (an increase of ≥ 1 point if EDSS was 4.5–5.5 and ≥ 0.5 point if EDSS was 6–7). Detailed eligibility criteria are provided in the supplementary materials. All participants provided written informed consent at enrolment.

Intervention

During a 12-month placebo-controlled phase, patients were randomised (2:1) to receive MD1003 (biotin 100mg) or placebo orally thrice daily, stratified by study centre only. This was followed by MD1003

100mg thrice daily for all patients for a further 12 months (extension phase). Treatments were provided in identical capsules containing the same quantity of tasteless white powder. Patients and investigators were masked to study treatment during the initial 12 months and remained blinded during the extension phase as to which treatment was administered during the first phase. As it was unlikely that the treating neurologist could differentiate active treatment from placebo, the treating and examining neurologist could be the same individual.

All concomitant medications were allowed throughout the study, including immune modulators and immunosuppressive drugs provided they were introduced at least 3 months before inclusion (≥ 1 month for fampridine). Intravenous methylprednisolone without oral taper was allowed for MS relapse. Physical therapy was permitted, but an in-patient intensive physical therapy programme was not allowed in the 3 months prior to inclusion or during the trial because this could interfere with disability evaluation.

Outcomes

Neurological assessments were conducted by an examining neurologist every 12 weeks in the placebo-controlled phase. All evaluation scales used in the study are described in detail in the supplementary materials, and Figure S1 shows the timing of study assessments.

The primary endpoint was the proportion of patients with improvement of MS-related disability at month 9, confirmed at month 12. Improvement was defined as a decrease of ≥ 0.5 point or ≥ 1 point in EDSS (if baseline score was 6–7 or 4.5–5.5, respectively) or a $\geq 20\%$ decrease in timed 25-foot walk (TW25) time, compared with the best EDSS or TW25 value recorded at either the screening or the randomisation visit. Since the TW25 was performed twice per visit, the baseline value was the best out of four values obtained at screening or randomisation. EDSS was assessed using the Neurostatus EDSS (www.neurostatus.net) by EDSS raters qualified to Neurostatus level C. In line with Multiple Sclerosis Functional Composite guidelines, TW25 times were truncated to 180 seconds for times above 180 seconds or when the patient could not perform the test because of MS-related disability. The best of the two TW25 values achieved at each visit was recorded.

Secondary endpoints comprised mean change in EDSS from randomisation to month 12; mean clinical

global impression of change scored by the clinician (clinician-assessed Clinical Global Impression Scale (CGI)) and patient (subject-assessed Clinical Global Impression Scale (SGI)) at month 12; and mean changes from randomisation in the 12-item Multiple Sclerosis Walking Scale (MSWS), Short Form 36 Health Survey (SF-36) subscores, TW25, modified Fatigue Impact Scale (MFIS), nine-hole peg test (9-HPT) and Kurtzke EDSS functional subscores. The proportion of patients with improvement of EDSS and TW25 values, stable EDSS or EDSS progression (≥ 0.5 point or ≥ 1 point if value at randomisation was 4.5–5.5) at month 9 (confirmed at month 12) was also assessed. Safety was investigated by comparing the incidence of adverse events (AEs) and laboratory or electrocardiogram (ECG) findings between study arms. Magnetic resonance imaging (MRI) investigations (3DT1, T2-spin-echo, T2-fluid attenuated inversion recovery (FLAIR) and post-gadolinium T1 sequences) were conducted in 74 patients from six centres who are participating in a long-term ancillary study using non-conventional MRI sequences.

Statistical analysis

No controlled data for clinical outcomes with MD1003 were available at the time of study design for sample size calculation. Data from seven MS patients treated with MD1003 for >3 months were used to estimate that >40% of MD1003-treated patients might show a reduction in disability. While progressive MS patients typically do not exhibit a confirmed decrease in EDSS scores,¹³ and as a conservative approach, it was estimated that 10% of the placebo-treated patients might improve. It was estimated that at least 105 patients (70 in the MD1003 arm and 35 in the placebo arm) would be required to detect a difference in the proportion of patients demonstrating clinical improvement with 90% power at a 5% two-sided significance level.

Differences in proportions were compared between arms with Fisher's exact test and differences in means with the non-parametric Mann–Whitney *U* test. All statistical analyses were two-sided and conducted on an intention-to-treat (ITT) basis with a significance level of 5% using SAS software (version 9.2). The primary endpoint was also analysed in patients who had assessments of EDSS or TW25 at screening, baseline, month 9 and month 12 without major protocol deviations (per-protocol population). The homogeneity of treatment effect for the primary endpoint was assessed in subgroup analyses stratified according to fampridine treatment, baseline EDSS value (4.5–5.5 or 6–7) and treatment centre.

No imputation method was used to handle missing data for the primary endpoint as this could have overestimated the number of responding patients. The 'last observation carried forward' approach was used to handle missing data for all supportive analyses, except for the EDSS change, EDSS progression and TW25 change where no imputation was used.

Results

Between October 2013 and January 2014, 166 patients were screened and 154 were randomised to MD1003 ($n = 103$) or placebo ($n = 51$; Figure 1). All randomised patients received their intended treatment and were included in the ITT and safety populations. Baseline demographic characteristics were balanced between arms (Table 1), except for a non-significantly greater proportion of patients with PPMS in the MD1003 arm. Approximately half of the patients (73/154) were receiving fampridine and 40% (62/154) had concomitant DMTs. A similar proportion of patients in the MD1003 (19 (18.4%)) and placebo (10 (19.6%)) arms were on a physical therapy programme at baseline.

During the placebo-controlled phase, 12 (11.7%) MD1003-treated patients discontinued treatment (Figure 1) including six patients withdrawn due to AEs (suicide, mucocutaneous rash, asthenia, muscle spasms, abdominal pain and libido disorder). Nine (17.6%) placebo-treated patients discontinued treatment including seven due to AEs (overdose, dry mouth, intracranial haemorrhage, mental disorder, extrasystoles, muscle spasticity and pregnancy). During the extension phase, 17 of the 91 (18.6%) patients in the MD1003 > MD1003 arm discontinued treatment (2 due to AEs: weight loss and breast cancer) as did 4 of the 42 (9.5%) patients in the placebo > MD1003 arm (1 due to AE: myopathy).

Primary endpoint

A total of 13 (12.6%; 95% confidence interval (CI): 6.9%–20.6%) patients treated with MD1003 had a reduction in MS-related disability at month 9, confirmed at month 12, compared with none in the placebo arm (Figure 2; $p = 0.005$; effect estimate for difference in proportions: 0.13; asymptotic 95% CI: 0.06–0.19). A total of 10 of the 13 (76.9%) patients with reduced disability had 3-month confirmed improved EDSS scores and 5 (38.5%) had improved TW25 times, while 2 (15.4%) improved on both scores. Baseline characteristics of the 13 responding patients are shown in Table 2. Results were similar in the per-protocol population ($n = 129$): 13 of the 87 (14.9%) MD1003-treated patients achieved the

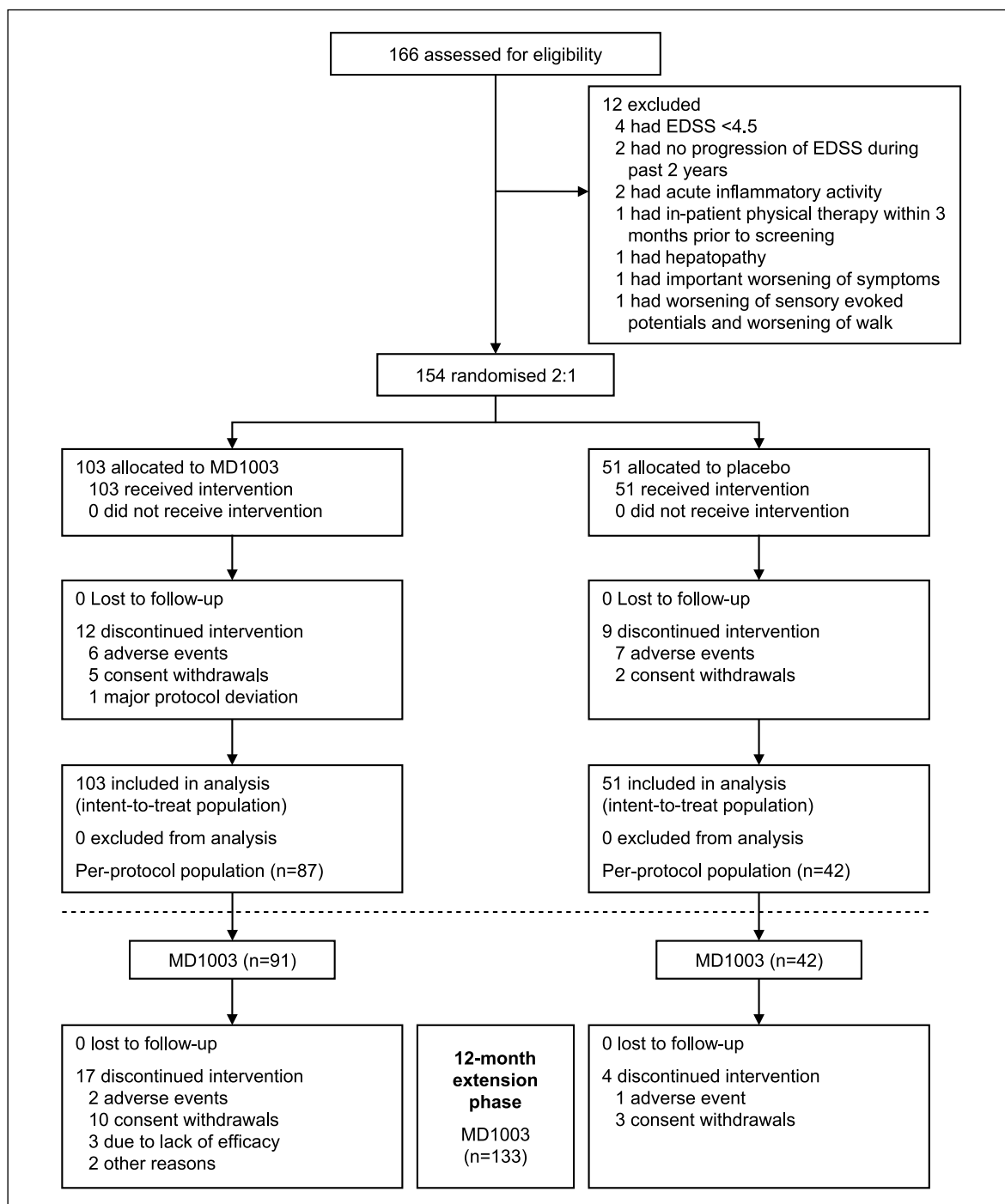


Figure 1. Screening, enrolment, randomisation and follow-up of study patients. The ITT population was defined as all patients who were assigned to a treatment arm. The per-protocol population was defined as all patients of the ITT population with assessments of EDSS or TW25 at screening, baseline, month 9 and month 12 without major protocol deviations.

EDSS: Expanded Disability Status Scale; ITT: intention to treat; TW25: timed 25-foot walk.

primary endpoint compared with none in the placebo arm ($n=42$; $p=0.009$). Pre-planned subgroup analyses showed that the primary endpoint was reached more frequently in MD1003-treated patients not

taking fampridine (12 of 58; 20.3%) than those taking fampridine (1 of 45; 2.3%) and in patients with baseline EDSS 4.5–5.5 (6 of 28; 21.4%) versus EDSS 6–7 (7 of 75; 9.3%; Table S1). Study centre, physical therapy

Table 1. Baseline demographic characteristics of the intention-to-treat population.

	MD1003 (<i>n</i> = 103)	Placebo (<i>n</i> = 51)
Female sex, <i>n</i> (%)	53 (51.5)	30 (58.8)
Age, mean (SD) (years)	51.8 (9.1)	50.7 (8.4)
Disease phenotype, <i>n</i> (%)		
PPMS	42 (40.8)	13 (25.5)
SPMS	61 (59.2)	38 (74.5)
Duration of MS, mean (SD) (years)	14.8 (8.9)	17.4 (10.3)
EDSS		
Mean (SD)	5.98 (0.75)	6.20 (0.52)
Median (range)	6.0 (4.5–7.0)	6.0 (5.0–7.0)
EDSS 4.5–5.5, <i>n</i> (%)	28 (27.2)	7 (13.7)
EDSS 6–7, <i>n</i> (%)	75 (72.8)	44 (86.2)
TW25 (seconds)		
Mean (SD)	21.8 (27.0)	30.6 (39.4)
Median (range)	13.0 (4.0–180.0)	14.5 (4.8–180.0)
Physical therapy programme in the 3 months prior to inclusion, <i>n</i> (%)	19 (18.4)	10 (19.6)
Concomitant DMT, <i>n</i> (%)	42 (40.8)	20 (39.2)
Mycophenolate mofetil	8 (7.8)	5 (9.8)
Natalizumab	7 (6.8)	1 (2.0)
Azathioprine sodium	4 (3.9)	1 (2.0)
Fingolimod hydrochloride	2 (1.9)	2 (3.9)
Cyclophosphamide monohydrate	6 (5.8)	3 (5.9)
Cyclophosphamide	5 (4.9)	1 (2.0)
Interferon beta-1a	4 (3.9)	0
Interferon beta-1b	2 (1.9)	1 (2.0)
Glatiramer acetate	2 (1.9)	1 (2.0)
Methylprednisolone sodium succinate	16 (15.5)	15 (29.4)
Methotrexate	2 (1.9)	4 (7.8)
Treatment with fampridine or amifampridine, <i>n</i> (%)	45 (43.7)	28 (54.9)
Treatment with muscle relaxants, <i>n</i> (%)	58 (56.3)	29 (56.9)

DMT: disease-modifying therapy; EDSS: Expanded Disability Status Scale; MS: multiple sclerosis; PPMS: primary progressive multiple sclerosis; SD: standard deviation; SPMS: secondary progressive multiple sclerosis; TW25: timed 25-foot walk.

and disease history did not influence the proportion of patients achieving the primary endpoint.

A total of 12 of the 91 (13.2%; 95% CI: 7.0%–21.9%) patients initially treated with MD1003 had reduced MS-related disability at 18 months (confirmed at 24 months; Figure 2), including 10 of the 13 (77%) patients who responded during the placebo-controlled phase. After switching to MD1003, 3 of the 42 (7.1%; 95% CI: 1.5%–19.5%) patients in the placebo > MD1003 arm had reduced disability at 18 months (confirmed at 24 months). At month 24, 14 of the 91 (15.4%) patients in the MD1003 > MD1003 arm and 5 of the 42 (11.9%) patients in the placebo > MD1003 arm had reduced MS-related disability.

Secondary endpoints

Table 3 shows the results of secondary endpoints. The proportion of patients with EDSS progression at month 9 (confirmed at month 12) was 13.6% in the placebo arm and 4.2% in the MD1003 arm ($p=0.07$). At month 18 (confirmed at month 24), the proportion increased to 31.7% in the placebo > MD1003 arm and 9.9% in the MD1003 > MD1003 arm ($p=0.005$).

At month 12, the mean (\pm standard deviation (SD)) EDSS decreased from baseline in the MD1003 arm (-0.03 ± 0.50) but increased at the expected rate in the placebo arm ($+0.13 \pm 0.33$, $p=0.01$; Figure 3). EDSS progression stopped after placebo patients were switched to MD1003, and mean EDSS values remained relatively constant to month 24 ($+0.15 \pm 0.37$).

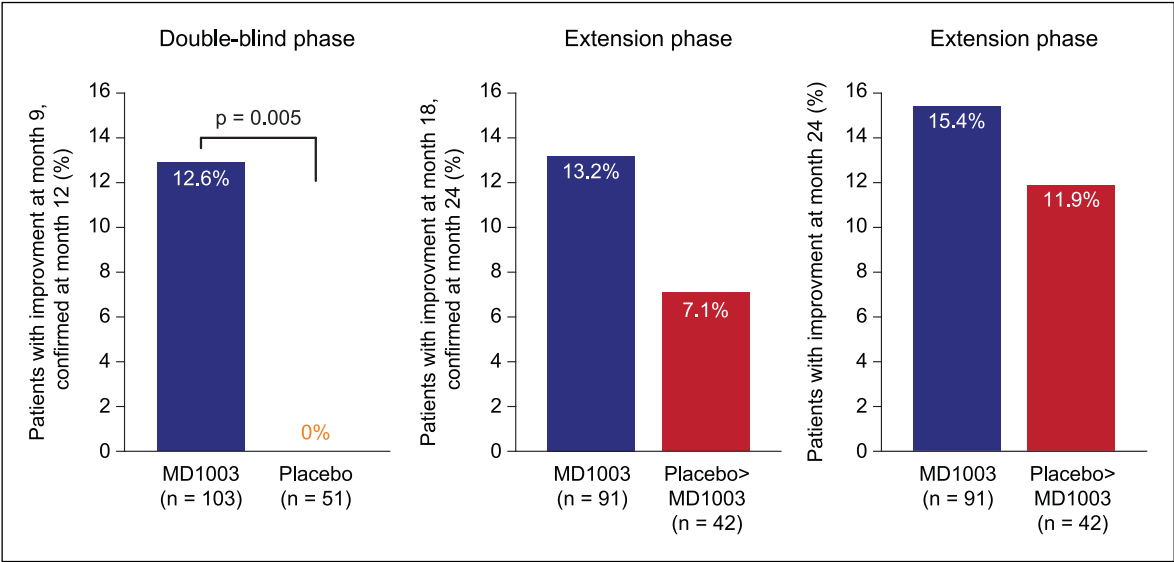


Figure 2. Proportion of patients with reversal of MS-related disability. Reversal of disability was defined as improvement of EDSS or TW25 values confirmed at the next visit (except for month 24 where no subsequent visit was available) compared with best respective values recorded at either the screening or the randomisation visits. EDSS: Expanded Disability Status Scale; TW25: timed 25-foot walk.

Table 2. Baseline characteristics of the 13 patients who achieved the primary endpoint of the study.

Age (years)	Sex (F/M)	Centre	PPMS or SPMS	MS duration (years)	Baseline EDSS	Improvement		DMT
						EDSS	TW25	
68	M	1	PPMS	3.0	6.5	+	–	
50	M	1	SPMS	14.0	6.5	–	+	
52	M	2	PPMS	6.0	6.5	+	–	MPM
63	F	3	SPMS	12.0	4.5	+	–	INF
55	M	6	SPMS	18.0	7	–	+	
43	M	6	SPMS	10.0	5.5	+	+	CP
52	F	9	SPMS	16.0	6.5	+	–	MPM
59	M	11	SPMS	12.0	7	+	–	MPM
62	M	11	PPMS	37.0	4.5	+	–	MTX
43	M	14	PPMS	5.0	4.5	+	–	
64	M	14	SPMS	31.0	6.5	+	+	
46	F	15	SPMS	15.0	4.5	+	–	INF
46	M	16	SPMS	25.0	5.5	–	+	
Mean 54.0	23.1% F	–	69.2% SPMS	Mean 15.7	Mean 5.81	76.9%	38.5%	53.8%

CP: cyclophosphamide; DMT: disease-modifying therapy; F: female; EDSS: Expanded Disability Status Scale; INF: interferon; M: male; MPM: mycophenolate mofetil; MS: multiple sclerosis; MTX: methotrexate; PPMS: primary progressive multiple sclerosis; SPMS: secondary progressive multiple sclerosis; TW25: timed 25-foot walk.

In patients who remained on MD1003, mean EDSS was relatively stable over 24 months (+0.04±0.62).

Mean TW25 times increased more in the placebo arm than in the MD1003 arm, but this difference was not significant (Table 3). The median TW25 time remained relatively constant in MD1003-treated

patients throughout the study (Figure S3). Other post hoc analyses showed that in the MD1003 group, nine (8.7%) patients had >20% improvement in TW25 times at month 9, confirmed at month 12, compared with the last pre-treatment visit versus none in the placebo group (*p*=0.03). Furthermore, the proportion of patients unable to successfully perform the TW25

Table 3. Secondary endpoints (according to the protocol pre-defined rank).

Endpoint	Double-blind, placebo-controlled phase		Extension phase		<i>p</i> value
	MD1003 (<i>n</i> = 103)	Placebo (<i>n</i> = 51)	MD1003 > MD1003 (<i>n</i> = 91)	Placebo > MD1003 (<i>n</i> = 42)	
Change in EDSS, ^a mean (SD)	-0.03 (0.50)	0.13 (0.33)	0.04 (0.62)	0.15 (0.37)	0.13
Change in MSWS, ^a mean (SD) (seconds)	0.79 (17.12)	5.26 (22.51)	2.06 (17.22)	5.05 (27.07)	0.64
CGI, ^b mean (SD)	4.05 (0.81)	4.62 (0.75)	4.17 (0.97)	4.21 (0.75)	0.93
SGL, ^b mean (SD)	4.27 (1.05)	4.76 (0.89)	4.47 (1.07)	4.41 (0.87)	0.72
Change in TW25, ^a mean (SD) (%)	67.71 (203.27)	98.18 (253.73)	95.77 (221.66)	121.51 (256.29)	0.82
Patients with improvement of EDSS and TW25, ^{c,d} <i>n</i> (%)	2 (1.9)	0 (0.0)	2 (2.2)	0 (0.0)	0.99
Patients with improvement of EDSS, ^{c,e} <i>n</i> (%)	10 (9.7)	0 (0.0)	10 (11.0)	2 (4.8)	0.34
Patients with EDSS progression, ^{c,f} <i>n</i> (%)	4 (4.2)	6 (13.6)	8 (9.9)	13 (31.7)	0.005
Patients with stable EDSS score, ^c <i>n</i> (%)	81 (78.6)	38 (74.5)	63 (69.2)	26 (61.9)	0.43
Change in SF-36 score, ^a mean (SD)					
General health	-4.43 (16.75)	2.25 (16.23)	-3.95 (15.68)	1.37 (19.26)	0.17
Health change	3.54 (24.49)	3.65 (29.17)	1.44 (24.81)	14.10 (24.19)	0.01
Physical functioning	-1.72 (26.70)	0.50 (22.14)	-3.53 (26.45)	-1.36 (23.58)	0.92
Social functioning	-0.24 (28.38)	-0.25 (26.52)	0.82 (25.60)	2.08 (28.55)	0.99
Role limitations due to physical health	8.58 (46.29)	1.17 (33.71)	2.01 (44.35)	6.35 (33.43)	0.36
Role limitations due to emotional problems	2.43 (43.00)	-0.67 (45.42)	0.18 (46.11)	7.14 (45.70)	0.48
Pain	0.12 (18.93)	-2.55 (19.79)	-1.89 (20.73)	-1.61 (16.81)	0.86
Energy or fatigue	-2.85 (19.01)	0.82 (14.87)	1.35 (16.91)	6.71 (17.21)	0.07
Emotional well-being	-4.41 (17.15)	1.33 (13.78)	-1.31 (17.70)	-0.38 (13.88)	0.83
Change in MFIS, ^a mean (SD)	1.38 (16.04)	1.30 (15.69)	-0.40 (13.49)	0.79 (13.88)	0.97
Change in 9-HPT, ^a mean (SD) (seconds)					
Best hand	2.06 (5.21)	1.40 (7.06)	3.43 (8.44)	2.76 (9.20)	0.77
Worst hand	3.14 (25.03)	1.49 (14.98)	8.87 (33.86)	7.70 (32.17)	0.77
Change in EDSS subscores, ^a mean (SD)					
Visual	0.05 (0.81)	-0.10 (0.50)	0.04 (1.00)	0.17 (1.19)	0.73
Brain stem	0.10 (0.69)	-0.08 (0.82)	0.09 (0.89)	0.14 (0.84)	0.58
Pyramidal	-0.03 (0.55)	0.04 (0.53)	0.12 (0.61)	0.12 (0.59)	0.88
Cerebellar	0.19 (0.86)	0.14 (1.12)	0.09 (0.91)	0.05 (1.53)	0.82
Sensory	-0.25 (0.93)	0.06 (0.88)	-0.08 (0.96)	-0.17 (0.99)	0.64
Bowel and bladder	0.14 (0.83)	0.20 (0.98)	0.12 (0.89)	0.02 (0.92)	0.81
Cerebral	-0.08 (0.76)	0.08 (0.91)	-0.01 (0.89)	0.00 (0.96)	0.75

9-HPT: nine-hole peg test; CGI: clinician-assessed Clinical Global Impression Scale; EDSS: Expanded Disability Status Scale; MFIS: modified Fatigue Impact Scale; MSWS: Multiple Sclerosis Walking Scale; SD: standard deviation; SF-36: Short Form 36 Health Survey; SGL: subject-assessed Clinical Global Impression Scale; TW25: timed 25-foot walk.

Mean values and percentages are calculated for the number of patients evaluated at the specified treatment visit. *p* values indicate comparison between the MD1003 and placebo arms.

^aFrom month 0 to month 12 during the placebo-controlled phase and from month 0 to month 24 during the extension phase.

^bAssessed at month 12 during the placebo-controlled phase and month 24 during the extension phase.

^cAt month 9, confirmed at month 12, during the placebo-controlled phase and at month 18, confirmed at month 24, during the extension phase.

^dClinical improvement was defined as a decrease of ≥ 0.5 point or ≥ 1 point for EDSS (if baseline score was 6–7 or 4.5–5.5, respectively) or a decrease of $\geq 20\%$ for TW25 time.

^eSame criteria from improvement in EDSS as for the primary endpoint.

^f ≥ 0.5 point or ≥ 1 point if value at randomisation was 4.5–5.5.

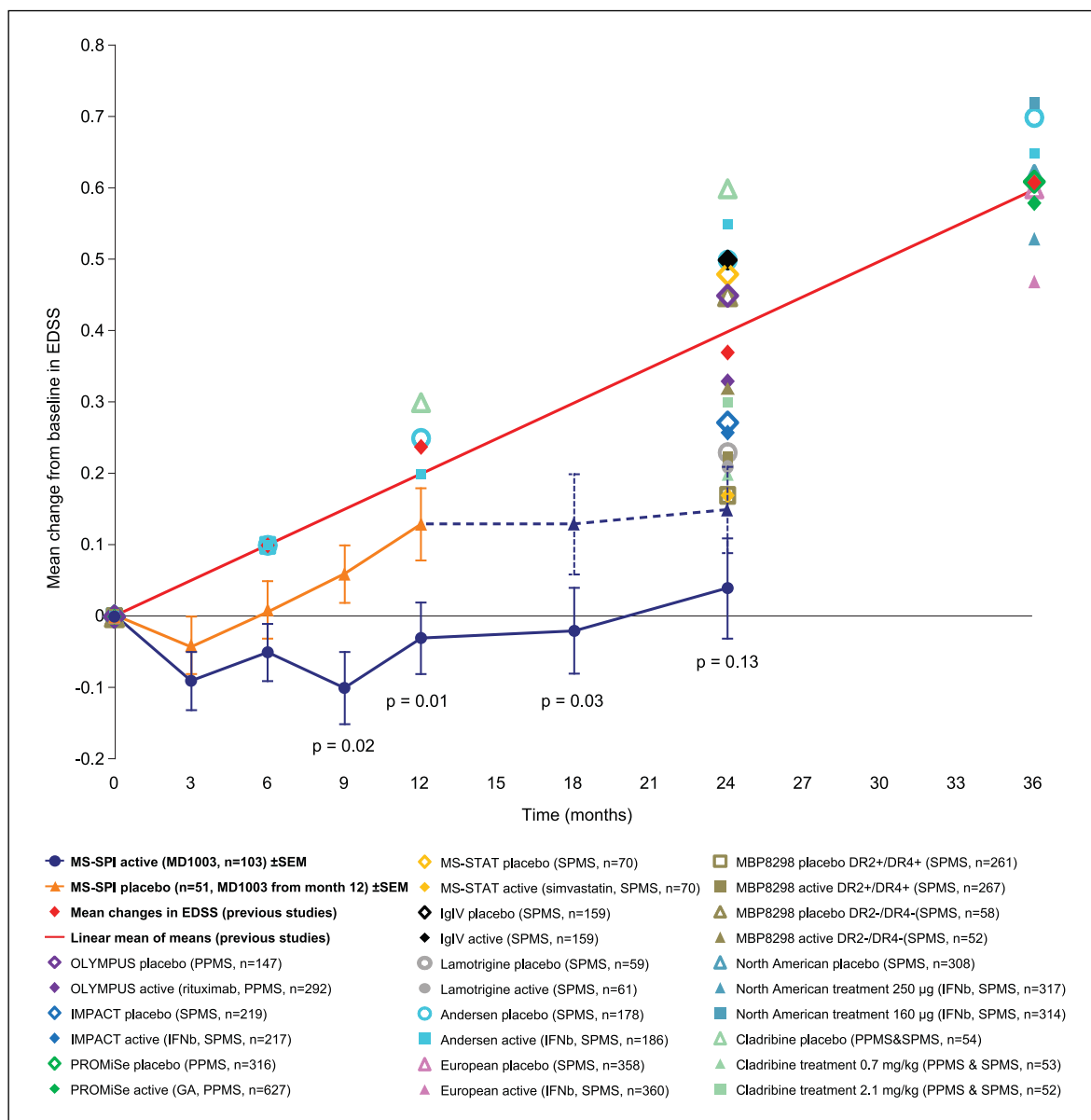


Figure 3. Mean change from baseline in EDSS during the 12-month double-blind placebo-controlled phase and 12-month extension phase. This figure also shows the mean change from baseline in EDSS (represented as the mean of means) as reported in other published placebo-controlled studies of pharmacological agents in PPMS or SPMS (>6000 patients in total).^{7,9,14-22}

EDSS: Expanded Disability Status Scale; DR 2/4 (+ or -): human leukocyte antigen haplotype (positive or negative); GA: glatiramer acetate; IFNb: interferon beta; PPMS: primary progressive multiple sclerosis; SEM: standard error of the mean; SPMS: secondary progressive multiple sclerosis; TW25: timed 25-foot walk.

(values truncated at 180 seconds) progressed at a lower rate in the MD1003 group (from 1.0% at month 0 to 6.4% at month 12), than in the placebo group (from 2.0% at month 0 to 19.0% at month 12; $p=0.07$).

MD1003-treated patients had significantly lower CGI scores (mean = 4.05 ± 0.81 vs 4.62 ± 0.75 ; $p < 0.001$) and SGI scores (mean = 4.27 ± 1.05 vs 4.76 ± 0.89 ;

$p=0.009$) at month 12 compared with placebo-treated patients. There was no longer a difference between arms at month 24, driven by improvement in the placebo arm after switching to MD1003 (Table 3). Results of the MSWS assessments showed a non-significant trend favouring MD1003. In contrast, SF-36 subscores did not show consistent results favouring either treatment group.

Safety

The incidence and distribution of AEs during the placebo-controlled phase were similar between arms (Table 4 and Table S2). Most reported AEs were mild or moderate. The only serious AE reported in more than one patient was MS relapse (five (4.9%) MD1003-treated patients and four (7.8%) placebo-treated patients). One serious AE was reported to be possibly related to MD1003 (mucocutaneous rash), although subsequent chamber patch testing was negative for biotin. One death by suicide occurred during the study in the MD1003 arm and was not considered treatment related. AEs reported during the extension phase included MS relapses in 7 of the 91 (7.7%) patients who initially received MD1003 and in 2 of the 42 (4.8%) patients who initially received placebo. A total of two neoplasms not considered treatment related were found in two patients initially receiving MD1003.

Six cases of apparent hyperthyroidism (low thyroid-stimulating hormone (TSH) and high triiodothyronine or thyroxine) were recorded as AEs in the MD1003 arm during the placebo-controlled phase and in five additional patients during the extension phase (including one patient who initially received placebo). This was determined to be due to biotin interference with the thyroid function laboratory tests that used a biotinylated antibody.²³ Only one of the six patients with apparent biological hyperthyroidism during the double-blind phase was confirmed to have Basedow's disease based on histological examination after thyroidectomy.

At month 12, MRI examination identified new MS-specific lesions in 11 of the 47 (23.4%) MD1003-treated patients and 3 of the 23 (13.0%) placebo-treated patients ($p=0.36$). Four (8.5%) MD1003-treated patients had enlarging lesions (vs none in the placebo arm; $p=0.30$) and two (4.3%) had at least one post-gadolinium enhancing lesion on T1 sequence (vs none in the placebo arm; $p=0.99$). Five patients had new T2 lesions during the extension phase, including one in the initial placebo arm (5.6%) and four in the initial MD1003 arm (10%).

Discussion

The primary endpoint of most trials in progressive MS is disability progression. As MD1003 is believed to target the nervous system, and not the immune system, MS-SPI was instead designed and powered with disability improvement as the primary criterion. Results show that MD1003 can reverse MS-related disability in 12.6% of the patients, while this was

observed in none of the placebo patients ($p=0.005$). Treatment efficacy was maintained over 24 months in patients in the active treatment arm with 10 of the 13 (77%) patients who responded initially showing sustained improvement to month 24. Two additional patients in the active arm who did not show confirmed improvement in the first 12 months showed confirmed improvement at 24 months.

MD1003 also reduced the proportion of patients with confirmed EDSS progression. As a result of both disability improvement and decreased progression, the mean EDSS in the active treatment arm was almost unchanged over 24 months compared with baseline. Importantly, the mean EDSS increase observed under placebo was halted after patients were switched to MD1003 during the extension phase, with reversal of MS-related disability observed in some patients. However, the higher level of disability reached by these patients compared with those in the active treatment arm suggests that delaying treatment initiation could lead to a loss of chance. This observation would favour a DMT effect of MD1003 rather than a simple symptomatic effect. On the other hand, the early improvement already observed after 3 months would favour a symptomatic effect. This early response was also observed in the placebo group (not confirmed at subsequent visits), which could also indicate an initial placebo effect.

EDSS progression observed in the placebo arm of MS-SPI was consistent with previous placebo data in progressive MS trials (Figure 3).^{7,9,14-22} The effect of MD1003 on EDSS change is strikingly different from observations in published placebo-controlled studies in progressive MS (Figure 3)^{7,9,14-22} which showed that mean EDSS scores under both active drug and placebo increased over the treatment period, irrespective of the differences in design and treatment interventions.

The improvements in CGI and SGI scores with MD1003 compared with placebo support the clinical meaningfulness of the results observed on EDSS. The low responsiveness of the TW25 endpoint was surprising, as this parameter is usually sensitive to change.²⁴ Other post hoc analyses support a superiority of MD1003 over placebo on the TW25 measure which is consistent with results seen for EDSS.

MD1003 was well tolerated over 24-month treatment, consistent with data from the pilot study.¹¹ The suicide in the MD1003 arm was judged not to be treatment related. This individual had severe and progressing MS and a past history of anxiety disorder

Table 4. Adverse events reported during the study.

12-month double-blind, placebo-controlled phase	MD1003 (n=103)	Placebo (n=51)
Any AE, n (%)	84 (81.6)	43 (84.3)
AEs occurring in >2% of MD1003-treated patients		
Urinary tract infection	10 (9.7)	6 (11.8)
Bronchitis	5 (4.9)	6 (11.8)
Nasopharyngitis	5 (4.9)	3 (5.9)
Multiple sclerosis relapse	5 (4.9)	4 (7.8)
Hyperthyroidism ^a	6 (5.8)	—
Gastroenteritis	4 (3.9)	2 (3.9)
Constipation	4 (3.9)	2 (3.9)
Back pain	4 (3.9)	3 (5.9)
Headache	4 (3.9)	3 (5.9)
Muscle spasticity	4 (3.9)	6 (11.8)
Nausea	3 (2.9)	2 (3.9)
Oedema peripheral	3 (2.9)	1 (2.0)
Cystitis	3 (2.9)	1 (2.0)
Fall	3 (2.9)	2 (3.9)
Dizziness	3 (2.9)	2 (3.9)
Oropharyngeal pain	3 (2.9)	—
Any TRAE, n (%)	20 (19.4)	12 (23.5)
TRAEs occurring in >2% of MD1003-treated patients		
Headache	3 (2.9)	—
Any severe AE, ^b n (%)	5 (4.9)	4 (7.8)
Any SAE, ^c n (%)	20 (19.4)	12 (23.5)
SAEs occurring in more than one patient		
Multiple sclerosis relapse	5 (4.9)	4 (7.8)
12-month extension phase	MD1003 > MD1003 (n=91)	Placebo > MD1003 (n=42)
Any AE, n (%)	49 (53.8)	25 (59.5)
AEs occurring in >2% of MD1003 > MD1003 patients		
Urinary tract infection	8 (8.8)	6 (14.3)
Multiple sclerosis relapse	7 (7.7)	2 (4.8)
Bronchitis	3 (3.3)	2 (4.8)
Hyperthyroidism ^a	3 (3.3)	1 (2.4)
Fall	3 (3.3)	1 (2.4)
Abdominal pain	3 (3.3)	—
Eczema	3 (3.3)	—
Hypercholesterolaemia	2 (2.2)	1 (2.4)
Nasopharyngitis	2 (2.2)	—
Back pain	2 (2.2)	—
Headache	2 (2.2)	—
Oedema peripheral	2 (2.2)	—
Musculoskeletal pain	2 (2.2)	—
Any TRAE, n (%)	7 (7.7)	5 (11.9)
TRAEs occurring in >2% of MD1003 > MD1003 patients		
None	—	—
Any severe AE, ^b n (%)	6 (6.6)	2 (4.8)
Any SAE, ^c n (%)	14 (15.4)	6 (14.3)
SAEs occurring in more than one patient		
Multiple sclerosis relapse	6 (6.6)	2 (4.8)
AE: adverse event; MS: multiple sclerosis; SAE: serious adverse event; TRAE: treatment-related adverse event.		
^a Six patients had apparent hyperthyroidism in the placebo-controlled phase and five patients during the extension phase. One patient in the placebo-controlled phase was confirmed to have Basedow's disease; the remaining AEs reported as hyperthyroidism were believed to be due to abnormal thyroid function tests due to interference with the biotin-based assay systems used. An additional case of suspected hyperthyroidism in the MD1003 > MD1003 group was identified but not reported as an AE.		
^b Severe events during the placebo-controlled phase were isolated cases of urinary tract infection, humerus fracture, suicide, mucocutaneous rash and rosacea in the MD1003 arm and isolated cases of fatigue, intracranial haematoma, MS relapse and bipolar disorder in the placebo arm. Severe events during the extension phase were isolated cases of vertigo, hyperthyroidism, hypoglycaemia, rectal cancer, MS relapse, lung disorder and menopause in the MD1003 > MD1003 group (seven events in six patients) and isolated cases of thyroiditis and myopathy in the placebo > MD1003 group.		
^c An adverse event resulting in death, hospitalisation, disability, congenital anomaly or was otherwise life threatening.		
AE: adverse event; SAE: serious adverse event; TRAE: treatment-related adverse event.		

treated with an anxiolytic. Individuals with MS have a higher rate of suicide than the general population.²⁵

More new or enlarging MRI lesions occurred in the MD1003 arm than in the placebo arm during the double-blind phase. Future trials should include careful assessment of MRI activity to rule out an unwanted pro-inflammatory effect of biotin. There are no published data on animal models concerning a potential pro-inflammatory effect of high-dose biotin. Of note, MRI was not used to assess efficacy because of the relatively short trial duration which was not powered to see an effect on brain volume.

One important safety observation from this study was that MD1003 interferes with biotin-based laboratory tests. This results in falsely low values with sandwich immunoassays and false elevations with competitive immunoassays.²³ This may potentially affect a wide range of laboratory assays, particularly the thyroid panel. This finding led to the recommendation to use non-biotin-based laboratory assays in patients taking MD1003.

Our study has some methodological limitations. The relative short follow-up of the placebo-controlled phase did not allow us to fully assess the potential disease-modifying effect of high-dose biotin. The number of responding patients was lower than our initial expectations, possibly because of the very stringent primary endpoint used in this study. The absence of separate examining and treating physicians could have theoretically perturbed the study blinding (although biotin has no recognisable flavour or AEs). Of note, the success of blinding was not specifically assessed in this study. There were also some potential imbalances between the two treatment groups at baseline.

In conclusion, our data suggest that targeting neuron or oligodendrocyte metabolism with high-dose biotin may represent an effective and safe treatment for patients with progressive MS.

Acknowledgements

We thank Yann Poulouin, MSc, the statistician at Biotrial, Rennes, France, who was responsible for the statistical analysis of study data and Jacques Ropers, PharmD, URC Ambroise-Paré, Boulogne, France, for his help with the methodology and interpretation of data. Editorial support for the preparation of this manuscript was provided by Jamie Ashman, PhD, of Prism Ideas GmbH, Basel, Switzerland, and funded by MedDay Pharmaceuticals. We also thank the patients and their families, the MS-SPI study coordinators, and

all the staff at the study sites. Trial registration: EudraCT:2013-002113-35.

Declaration of Conflicting Interests

The author(s) declared the following potential conflicts of interest with respect to the research, authorship and/or publication of this article: Prof. Ayman Tourbah has received consulting fees, travel grants and reports institutional financial compensation for patient visits during the trial from MedDay Pharmaceuticals and consulting and lecturing fees, travel grants and research support from Biogen Idec, Sanofi-Genzyme, Novartis, Merck Serono, Teva Pharmaceuticals and Roche. Prof. Gilles Edan reports personal fees from Biogen Idec and Novartis and grants and personal fees from Merck Serono, Teva, Sanofi and Bayer, outside the submitted work. Prof. Sandra Vukusic reports clinical trial support from MedDay Pharmaceuticals, Biogen Idec, Merck Serono, Novartis, Roche, Sanofi-Aventis, Teva Pharmaceuticals and Genzyme; advisory or consultancy fees from Biogen Idec, Genzyme, Merck Serono, Novartis, Roche, Sanofi-Aventis and Teva Pharmaceuticals; and invited congress support from Biogen Idec, Merck Serono, Novartis and Genzyme. Prof. Jérôme De Sèze reports clinical trial support from MedDay Pharmaceuticals, Biogen Idec, Merck Serono, Bayer, LFB, UCB, AB Sciences, Sanofi-Aventis, Teva Pharmaceuticals and Genzyme; advisory or consultancy fees from Biogen Idec, Merck Serono, Bayer, LFB, Sanofi-Aventis, Teva Pharmaceuticals, Almirall and Allergan; and invited congress support from Biogen Idec, Merck Serono, Bayer, LFB, Sanofi-Aventis, Teva Pharmaceuticals, Genzyme and Allergan. Dr Olivier Gout reports personal fees and non-financial support from Biogen Idec, Teva Pharmaceuticals, Genzyme and Novartis and personal fees from Merck, outside the submitted work. Prof. Gilles Defer reports personal fees from Biogen Idec, Novartis, Sanofi-Aventis, Genzyme and Teva Pharmaceuticals; grants from Novartis, Merck Serono and Teva Pharmaceuticals; and funding for travel from Merck Serono, Biogen Idec, Guerbet, Sanofi-Aventis, Novartis, Genzyme and Teva Pharmaceuticals, outside the submitted work. Prof. David-Axel Laplaud reports personal fees from Biogen and Teva Pharmaceuticals and grants and personal fees from Novartis and Genzyme, outside the submitted work. Prof. Thibault Moreau reports personal fees and non-financial support from Biogen, Novartis, Sanofi-Genzyme, Bayer, Merck, Teva Pharmaceuticals and Almirall, outside the submitted work. Prof. Bruno Brochet received grants from MedDay Pharmaceuticals during the conduct of the study; personal fees and non-financial support from

Biogen Idec, Novartis and Genzyme; grants from Merck Serono; grants, personal fees and non-financial support from Teva Pharmaceuticals; and grants and non-financial support from Bayer, outside the submitted work. Dr Frédéric Sedel is CEO and a shareholder at MedDay Pharmaceuticals (the study sponsor). Prof. Jean Pelletier has received consulting and lecturing fees, travel grants and unconditional research support from Biogen Idec, Sanofi-Genzyme, Novartis, Merck Serono and Teva Pharmaceuticals. Dr Christine Lebrun-Frenay, Prof. Michel Clanet, Dr Caroline Papeix, Prof. Marc Debouverie, Prof. Pierre Clavelou and Prof. Pierre Labauge have nothing to disclose.

Funding

The author(s) disclosed receipt of the following financial support for the research, authorship and/or publication of this article: This work was supported by MedDay Pharmaceuticals which also provided MD1003.

References

1. Browne P, Chandraratna D, Angood C, et al. Atlas of Multiple Sclerosis 2013: A growing global problem with widespread inequity. *Neurology* 2014; 83: 1022–1024.
2. Lublin FD, Reingold SC, Cohen JA, et al. Defining the clinical course of multiple sclerosis: The 2013 revisions. *Neurology* 2014; 83: 278–286.
3. Lublin FD. New multiple sclerosis phenotypic classification. *Eur Neurol* 2014; 72: 1–5.
4. Levin MC, Douglas JN, Meyers L, et al. Neurodegeneration in multiple sclerosis involves multiple pathogenic mechanisms. *Degener Neurol Neuromuscul Dis* 2014; 4: 49–63.
5. Stys PK, Zamponi GW, van MJ, et al. Will the real multiple sclerosis please stand up? *Nat Rev Neurosci* 2012; 13: 507–514.
6. Trapp BD and Stys PK. Virtual hypoxia and chronic necrosis of demyelinated axons in multiple sclerosis. *Lancet Neurol* 2009; 8: 280–291.
7. Hawker K, O'Connor P, Freedman MS, et al. Rituximab in patients with primary progressive multiple sclerosis: Results of a randomized double-blind placebo-controlled multicenter trial. *Ann Neurol* 2009; 66: 460–471.
8. Hartung HP, Gonsette R, König N, et al. Mitoxantrone in progressive multiple sclerosis: A placebo-controlled, double-blind, randomised, multicentre trial. *Lancet* 2002; 360: 2018–2025.
9. European Study Group on interferon beta-1b in secondary progressive MS. Placebo-controlled multicentre randomised trial of interferon beta-1b in treatment of secondary progressive multiple sclerosis. *Lancet* 1998; 352: 1491–1497.
10. Wingerchuk DM and Carter JL. Multiple sclerosis: Current and emerging disease-modifying therapies and treatment strategies. *Mayo Clin Proc* 2014; 89: 225–240.
11. Sedel F, Papeix C, Bellanger A, et al. High doses of biotin in chronic progressive multiple sclerosis: A pilot study. *Mult Scler Relat Disord* 2015; 4: 159–169.
12. Sedel F, Bernard D, Mock DM, et al. Targeting demyelination and virtual hypoxia with high-dose biotin as a treatment for progressive multiple sclerosis. *Neuropharmacology*. Epub ahead of print 5 September 2015, DOI: 10.1016/j.neuropharm.2015.08.028.
13. Confavreux C, Vukusic S, Moreau T, et al. Relapses and progression of disability in multiple sclerosis. *N Engl J Med* 2000; 343: 1430–1438.
14. Andersen O, Elovaara I, Farkkila M, et al. Multicentre, randomised, double blind, placebo controlled, phase III study of weekly, low dose, subcutaneous interferon beta-1a in secondary progressive multiple sclerosis. *J Neurol Neurosurg Psychiatry* 2004; 75: 706–710.
15. Chataway J, Schuerer N, Alsanousi A, et al. Effect of high-dose simvastatin on brain atrophy and disability in secondary progressive multiple sclerosis (MS-STAT): A randomised, placebo-controlled, phase 2 trial. *Lancet* 2014; 383: 2213–2221.
16. Cohen JA, Cutter GR, Fischer JS, et al. Benefit of interferon beta-1a on MSFC progression in secondary progressive MS. *Neurology* 2002; 59: 679–687.
17. Freedman MS, Bar-Or A, Oger J, et al. A phase III study evaluating the efficacy and safety of MBP8298 in secondary progressive MS. *Neurology* 2011; 77: 1551–1560.
18. Kapoor R, Furby J, Hayton T, et al. Lamotrigine for neuroprotection in secondary progressive multiple sclerosis: A randomised, double-blind, placebo-controlled, parallel-group trial. *Lancet Neurol* 2010; 9: 681–688.
19. Panitch H, Miller A, Paty D, et al. Interferon beta-1b in secondary progressive MS: Results from a 3-year controlled study. *Neurology* 2004; 63: 1788–1795.
20. Rice GP, Filippi M, Comi G, et al. Cladribine and progressive MS: Clinical and MRI outcomes of a multicenter controlled trial. Cladribine MRI Study Group. *Neurology* 2000; 54: 1145–1155.

21. Wolinsky JS, Narayana PA, O'Connor P, et al. Glatiramer acetate in primary progressive multiple sclerosis: Results of a multinational, multicenter, double-blind, placebo-controlled trial. *Ann Neurol* 2007; 61: 14–24.
22. Hommes OR, Sorensen PS, Fazekas F, et al. Intravenous immunoglobulin in secondary progressive multiple sclerosis: Randomised placebo-controlled trial. *Lancet* 2004; 364: 1149–1156.
23. Wijeratne NG, Doery JC and Lu ZX. Positive and negative interference in immunoassays following biotin ingestion: A pharmacokinetic study. *Pathology* 2012; 44: 674–675.
24. Hobart J, Blight AR, Goodman A, et al. Timed 25-foot walk: Direct evidence that improving 20% or greater is clinically meaningful in MS. *Neurology* 2013; 80: 1509–1517.
25. Manouchehrinia A, Tanasescu R, Tench CR, et al. Mortality in multiple sclerosis: Meta-analysis of standardised mortality ratios. *J Neurol Neurosurg Psychiatry* 2015; 87: 324–331.

Visit SAGE journals online
<http://msj.sagepub.com>

 SAGE journals