



HAL
open science

Critically ill elderly patients (≥ 90 years): Clinical characteristics, outcome and financial implications

Pierrick Le Borgne, Quentin Maestraggi, Sophie Couraud, François Lefebvre, Jean-Etienne Herbrecht, Alexandra Boivin, Baptiste Michard, Vincent Castelain, Georges Kaltenbach, Pascal Bilbault, et al.

► To cite this version:

Pierrick Le Borgne, Quentin Maestraggi, Sophie Couraud, François Lefebvre, Jean-Etienne Herbrecht, et al.. Critically ill elderly patients (≥ 90 years): Clinical characteristics, outcome and financial implications. PLoS ONE, 2018, 13 (6), pp.e0198360. 10.1371/journal.pone.0198360 . inserm-02093929

HAL Id: inserm-02093929

<https://inserm.hal.science/inserm-02093929>

Submitted on 9 Apr 2019

HAL is a multi-disciplinary open access archive for the deposit and dissemination of scientific research documents, whether they are published or not. The documents may come from teaching and research institutions in France or abroad, or from public or private research centers.

L'archive ouverte pluridisciplinaire **HAL**, est destinée au dépôt et à la diffusion de documents scientifiques de niveau recherche, publiés ou non, émanant des établissements d'enseignement et de recherche français ou étrangers, des laboratoires publics ou privés.

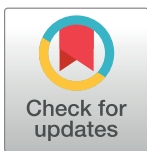
RESEARCH ARTICLE

Critically ill elderly patients (≥ 90 years): Clinical characteristics, outcome and financial implications

Pierrick Le Borgne^{1,2*}, Quentin Maestraggi³, Sophie Couraud¹, François Lefebvre⁴, Jean-Etienne Herbrecht³, Alexandra Boivin³, Baptiste Michard³, Vincent Castelain³, Georges Kaltenbach⁵, Pascal Bilbault^{1,2}, Francis Schneider³

1 Emergency Department, Hautepierre Hospital, University Hospital of Strasbourg, Strasbourg, France, **2** INSERM (French National Institute of Health and Medical Research), UMR 1260, Regenerative NanoMedicine (RNM), Fédération de Médecine Translationnelle (FMTS), University of Strasbourg, Strasbourg, France, **3** Medical Intensive Care Unit and UMR 1121, Hautepierre Hospital, University Hospital of Strasbourg, Strasbourg, France, **4** Department of Public Health, University Hospital of Strasbourg, Strasbourg, France, **5** Department of Geriatrics, University Hospital of Strasbourg, Strasbourg, France

* pierrick_med@yahoo.fr



OPEN ACCESS

Citation: Le Borgne P, Maestraggi Q, Couraud S, Lefebvre F, Herbrecht J-E, Boivin A, et al. (2018) Critically ill elderly patients (≥ 90 years): Clinical characteristics, outcome and financial implications. PLoS ONE 13(6): e0198360. <https://doi.org/10.1371/journal.pone.0198360>

Editor: Chiara Lazzeri, Azienda Ospedaliero Universitaria Careggi, ITALY

Received: November 24, 2017

Accepted: May 17, 2018

Published: June 1, 2018

Copyright: © 2018 Le Borgne et al. This is an open access article distributed under the terms of the [Creative Commons Attribution License](https://creativecommons.org/licenses/by/4.0/), which permits unrestricted use, distribution, and reproduction in any medium, provided the original author and source are credited.

Data Availability Statement: All relevant data are within the paper.

Funding: The author(s) received no specific funding for this work.

Competing interests: The authors have declared that no competing interests exist.

Abbreviations: ICU, intensive care unit; ED, Emergency Department; OR, odds ratio; SAPS II, Simplified Acute Physiology Score II; NIV, non-

Abstract

Background

Patients aged over 90 are being admitted to intensive care units (ICUs) with increasing frequency. The appropriateness of such decisions still remains controversial due to questionable outcome, limited resources and costs. Our objective was to determine the clinical characteristics and outcome in elderly patients (≥ 90 years) admitted in a medical ICU, with an additional focus on medico-economic implications.

Methods

We reviewed the charts of all patients (≥ 90 years) admitted to our ICU. We compared them with all other ICU patients (< 90 years), sought to identify ICU mortality predictors and also performed a long-term survival follow-up.

Results

In the study group of 317 stays: median age was 92 years (IQR: 91–94 years); most patients were female (71.3%). Acute respiratory failure (52.4%) was the main admission diagnosis; mean SAPS II was 55.6 ± 21.3 ; half the stays (49.2%) required mechanical ventilation (duration: 7.2 ± 8.8 days); withholding and withdrawing decisions were made for 33.4% of all stays. ICU and hospital mortality rates were 35.7% and 42.6% respectively. Mechanical ventilation (OR = 4.83, CI95%: 1.59–15.82) was an independent predictor of ICU mortality whereas age was not (OR = 0.88, CI95%: 0.72–1.08). Social security reimbursement was significantly lower in the study group compared with all other ICU stays, both per stay (13,160 vs 22,092 Euros, $p < 0.01$) and per day of stay ($p = 0.03$).

invasive ventilation; RRT, renal replacement therapy.

Conclusion

Among critically ill elderly patients (≥ 90 years), chronological age was not an independent factor of ICU mortality. ICU care-related costs in this population should not be considered as a limiting factor for ICU admission.

Background

According to the US Census Bureau, more than 1.87 million adults are 90 years or older (29% increase from 2000) [1]. As the population ages, intensive care units (ICUs) are confronted with increasing demand, with elderly patients now representing up to 20–30% of all admissions [2–3].

Firstly, studies suggest that physicians select patients based on chronological age albeit with considerable variations among centers [3–4]. Secondly, the geriatric specificities of these patients are not totally understood, and physicians' knowledge concerning prognosis is not optimal. The initial triage process prior to ICU admission should be based on patient benefit, not determined solely by prognosis and comorbidities, but also accompanied by a functional approach and quality-of-life perspective. Most ICU studies focus on 30-day mortality, whereas 6-month or 1-year mortality seems more appropriate [5]. When a very old patient leaves the ICU alive, the rehabilitation process appears far more complex. Key factors contributing to a good recovery include frailty and comorbidity management [6–7].

Several questions remain open, such as the controversial benefit of ICU care for elderly patients [8]. Both ICU and in-hospital mortality rates remain high in critically ill elderly patients, with a large difference in outcome depending mainly on the motive for admission. Thus, surgical patients have a satisfactory outcome in contrast to medical patients who are at higher risk of death [9–10]. Moreover, many patients die soon after ICU discharge and few have a good recovery one year after discharge. The long-term recovery of functional status seems low, only one quarter return to baseline levels after 12 months [11].

End-of-life issues are critical in this population. Ambiguous directives make the management of such patients complex, highlighting the significance of proactively addressing goals [10,12].

In the current austere economic climate, cost-effectiveness considerations may also be included in medical decisions [13]. Concerning elderly patients, very few studies have addressed this particular implication [14]. It also appears that elderly patients receive less treatment in the ICU even after adjustment for severity of illness [15]. There are no current guidelines to assist the decision-making process, which leads to heterogeneity of practices [16].

The main objective of this study was to determine the clinical characteristics and outcome in elderly patients (≥ 90 years). In addition, we wanted to determine independent predictors of ICU mortality. Lastly, a particular focus was laid on medico-economic implications.

Methods

Settings

Our hospital is a teaching hospital with 2,200 beds, 179,000 stays, 70,000 patients in the Emergency Department (ED) and approximately 1,000 ICU admissions each year. In France, the development of out-of-hospital medical care allows direct ICU admission (from home or nursing home) for critically ill patients.

Study population

The present study was a monocentric and retrospective analysis of collected data of all patients ≥ 90 years admitted to a 30-bed medical ICU (mean duration of stay: 9 days) between January 2000 and December 2015. If a patient was admitted to the ICU several times, this was considered as multiple stays and data were analyzed for each stay.

Data collection

For each patient, we collected demographic information including age, sex, motive for admission and disposition at hospital discharge. The existence of a fatal disease was reflected by the McCabe score and the functional status was evaluated by the Knaus classification [17–18]. Otherwise, we used the Charlson comorbidity index, which has been shown to predict the one-year mortality [19]. Clinical data encompassed the primary diagnosis, the comorbidities, the need for ventilation and organ support (catecholamines, renal replacement therapy), the length of ICU and hospital stay, the discharge information as well as occurrence of withholding or withdrawing life support. A long-term survival follow-up was obtained for all patients by direct contact with them, their relatives or their general practitioner.

Severity of illness was assessed using the Simplified Acute Physiology Score II (SAPS II) [20]. ICU and in-hospital outcomes were analyzed and compared with those of all other ICU patients (< 90 years) during the study period and the French general population (≥ 90 years) [21]. Sub-group analysis was performed in order to compare clinical characteristics and ICU procedures, firstly, between ICU survivors and non-survivors and, secondly, according to three consecutive periods (2000–2004, 2005–2009, 2010–2015).

Finally, we studied medico-economic data and activity tariffication. In our healthcare system, care-payers reimburse ICU stays to hospitals according to annual tariff rates fixed by law. The all-inclusive price includes both a basic rate according to homogeneous disease-stay fare (or case-mix fare) and a daily, but fixed, supplement related to the intensity of care whatever the disease treated. During the study period tariffs were stable or slightly increasing for a given case-mix from 2000 to 2010, but were progressively decreasing from 2011 to 2015 thanks to a policy of improving care-related costs. There was no specific adjustment for age in this reimbursement from the social security budget in relation to either part of the tariff.

Ethics

This study was approved by the institution's ethics review board (reference: AMK/BG/2015/2015-34).

Statistical analysis

The descriptive analysis of the qualitative variables gives the frequency of each value and the cumulative frequency, and that of the quantitative variables, gives location parameters (mean, median, first and third quartiles), and dispersion parameters (standard deviation, variance, range and interquartile range). Normality of the distributions was checked using the Shapiro-Wilk or Kolmogorov-Smirnov test. The Kaplan-Meier method was used to determine survival rates. Comparisons between qualitative variables were made using Chi-squared test or Fisher's exact test. Comparisons between quantitative and qualitative variables were made using the Student's t-test (or ANOVA) or Wilcoxon's test (or Kruskal-Wallis test). To estimate the independent predictors of ICU mortality, logistic regressions were performed. Multivariate analyses were done using variables statistically significant in bivariate analyses ($p < 0.1$) and with age. A stepwise regression based on the AIC was performed with backward selection (and with

age always included in the model). The significance level was set at 5%. All analyses were made with R 3.2.2 software.

Results

Clinical characteristics

During the study period a total of 16,210 stays were completed in our ICU. In 317 stays the patient was 90 years or older (1.96%) with 22 multiple stays (6.9%). Median age was 92 years, (IQR: 91–94) and the proportion of females was 71.3%. Most patients (39.8%) were admitted from the ED and about one third directly from home or nursing home by out-of-hospital services. Acute respiratory failure (52.4%) was the most frequent cause of admission followed by sepsis (11.4%). Mean ICU length of stay (LOS) was 7.0 ± 8.0 days. Clinical characteristics of the study population can be consulted in [Table 1](#).

ICU procedures

Almost half the study population (49.2%) underwent mechanical ventilation (MV) for an average of 7.2 ± 8.8 days; 38.8% of all patients had exclusive non-invasive ventilation (NIV) for 2.9 ± 2.6 days. Catecholamine support was applied in 47.6% of ICU stays and in 6.9% of stays a renal replacement therapy (RRT) was necessary. The decision to withhold or withdraw treatments was made for 33.4% of all stays, on average after 5.3 days (SD: 9.0 days) after ICU admission. ICU non-survivors had more MV and catecholamines ($p < 0.01$) but less NIV ($p = 0.02$). Withholding and withdrawing therapy were used mainly in the non-survivors group ($p < 0.01$), but later after admission than in survivors (6.1 vs. 1.9 days, $p = 0.01$). The list of ICU procedures is available in [Table 2](#).

Clinical course and outcome

ICU mortality was 35.7% and in-hospital-mortality was 42.6% in the study population. ICU survivors and non-survivors did not differ significantly in terms of comorbidities. Non-survivors had higher severity, as illustrated by SAPS II (71.7 vs. 46.7, $p < 0.01$). Patients admitted from the ED were more likely to survive the ICU stay ($p = 0.03$), contrary to patients admitted directly from home ($p = 0.04$) and respiratory failure was linked to better ICU outcome ($p < 0.01$). There was no difference in terms of ICU LOS between survivors and non-survivors ($p = 0.43$).

Mechanical ventilation (OR = 4.83, CI95%: 1.59–15.82) and SAPS II (OR = 1.09, CI95%: 1.05–1.12) were independent predictors of ICU mortality in univariate and multivariate analysis. Withholding and Withdrawing therapy (OR = 202.25, CI95%: 50.3–1145.2) and bacteremia were also associated with worse outcome. Other variables such as RRT, catecholamines, NIV and age (OR = 0.88, CI95%: 0.72–1.08) did not differ between ICU survivors and non-survivors ([Table 3](#)).

Most survivors were discharged to medical wards (45.7%) and geriatrics (14.8%). 90-day, 6-month and 1-year mortality were 47.3%, 55.8% and 69.7% respectively. We compared the study population with French population-based data of the same age group ([Fig 1](#)).

Evolution of practices

We divided the study time into three periods (2000–2004, 2005–2009, 2010–2015) in order to compare patients characteristics, ICU procedures and survival. The proportion of elderly patients did not change over the time of the study ($p = 0.26$), nor did the ICU LOS ($p = 0.76$) and most procedures ([S1 and S2 Tables](#)); whereas severity and LOS increased significantly in younger patients from 2000 to 2015. However, we noticed a progressive increase in advanced

Table 1. Characteristics of the study population.

| General characteristics | All Stays n = 317 | ICU Survivors n = 204 | ICU Non-survivors n = 113 | p value |
|--|----------------------|--------------------------|------------------------------|---------------------|
| Age (years), Median (IQR) | 92 (91–94) | 92 (91–94) | 92 (91–94) | 0.98 [†] |
| Female, n (%) | 226 (71.3) | 151 (74.0) | 75 (66.4) | 0.15* |
| SAPS II, (Me±SD) | 55.6±21.3 | 46.7±14.2 | 71.7±22.6 | <0.01 ^{††} |
| Glasgow score, Md (IQR) | 14 (9–15) | 14 (13–15) | 12 (5–14) | <0.01 ^{††} |
| Comorbidities, n (%) | | | | |
| Cardiovascular diseases | 297 (93.7) | 195 (95.6) | 102 (90.3) | 0.06* |
| Chronic renal insufficiency | 67 (21.1) | 45 (22.1) | 22 (17.2) | 0.59* |
| Diabetes | 50 (15.8) | 34 (16.7) | 16 (14.2) | 0.56* |
| Neurodegenerative disease | 54 (17) | 32 (15.7) | 22 (19.5) | 0.69** |
| Cancer | 57 (18) | 35 (17.2) | 22 (19.5) | 0.61* |
| Respiratory diseases | 75 (23.7) | 47 (23.0) | 28 (24.8) | 0.73* |
| Autonomy Scores, (Me±SD) | | | | |
| Charlson index | 7.7±1.7 | 7.8±1.7 | 7.6±1.7 | 0.54 [†] |
| Knaus score | 2.18±0.65 | 2.14±0.63 | 2.25±0.69 | 0.17 [†] |
| MacCabe score | 1.3±0.5 | 1.3±0.5 | 1.3±0.5 | 0.89 [†] |
| Admission source, n (%) | | | | |
| Emergency Department | 126 (39.8) | 90 (44.1) | 36 (31.9) | 0.03* |
| Home | 74 (23.3) | 41 (20.1) | 33(29.2) | 0.04* |
| Nursing home | 29 (9.1) | 17 (8.3) | 13 (11.5) | 0.35* |
| Geriatrics | 17 (5.4) | 12 (5.9) | 5 (4.4) | 0.58* |
| Medical wards | 43 (13.6) | 33 (16.2) | 10 (8.9) | 0.07* |
| Surgical wards | 20 (6.3) | 8 (3.9) | 12 (10.6) | 0.02* |
| Post-operative | 8 (2.5) | 4 (2.0) | 4 (3.5) | 0.46** |
| Diagnosis at admission^a, n (%) | | | | |
| Cardiac arrest | 28 (8.8) | 8 (3.9) | 20 (17.7) | <0.01* |
| Respiratory failure | 166 (52.4) | 118 (57.8) | 48 (42.5) | <0.01* |
| Coma | 30 (9.5) | 15 (7.4) | 15 (13.3) | 0.08* |
| Sepsis | 36 (11.4) | 20 (9.8) | 16 (14.2) | 0.24* |
| Cardiovascular failure | 33 (10.4) | 20 (9.8) | 13 (11.5) | 0.63* |
| Trauma | 4 (1.3) | 3 (1.5) | 1 (0.9) | 1.00** |
| Metabolic | 9 (2.8) | 5 (2.5) | 4 (3.5) | 0.73** |
| Acute renal failure | 27 (8.5) | 18 (8.8) | 9 (8.0) | 0.79* |
| Intoxication | 9 (2.8) | 8 (3.9) | 1 (0.9) | 0.17** |
| Neurologic | 11 (3.5) | 7 (3.4) | 4 (3.5) | 1.00** |
| Gastrointestinal | 13 (4.1) | 7 (3.4) | 6 (5.3) | 0.56** |
| Miscellaneous | 4 (1.3) | 4 (2.0) | 0 | 0.30** |
| ICU LOS, days (Me±SD) | 7.0±8.0 | 6.2±5.6 | 8.5±11.0 | 0.43 ^{††} |

^a more than one diagnosis is possible.

ICU: intensive care unit, Me: mean, Md: median, IQR: interquartile range (25–75), SD: standard derivation, SAPS II: simplified acute physiology score, LOS: Length of stay.

* Pearson’s Chi-squared test.

** Fisher’s Exact Test.

[†] t-test.

^{††} Wilcoxon rank sum test.

<https://doi.org/10.1371/journal.pone.0198360.t001>

Table 2. Procedures in the ICU.

| Procedures in the ICU, n (%) | All stays n = 317 | ICU Survivors n = 204 | ICU Non-survivors n = 113 | p value |
|---------------------------------------|----------------------|--------------------------|------------------------------|--------------------|
| Mechanical ventilation | 156 (49.2) | 64 (31.4) | 92 (81.4) | <0.01* |
| Days of MV (Me±SD) | 7.2±8.8 | 6.2±5.3 | 7.8±10.6 | 0.19 ^{††} |
| Non-invasive ventilation | 123 (38.8) | 89 (43.6) | 34 (30.1) | 0.02* |
| Days of NIV (Me±SD) | 2.9±2.6 | 2.9±2.5 | 2.9±2.8 | 0.90 [†] |
| Catecholamines | 151 (47.6) | 72 (35.3) | 79 (69.9) | <0.01* |
| Epinephrin | 42 (13.2) | 7 (3.4) | 35 (31) | <0.01* |
| Norepinephrin | 97 (30.6) | 43 (21.1) | 54 (47.8) | <0.01* |
| Dobutamine | 95 (30.0) | 47 (23.0) | 48 (42.5) | <0.01* |
| Renal replacement therapy | 22 (6.9) | 10 (4.9) | 12 (10.6) | 0.06* |
| Days with RRT (Me±SD) | 4.7±8.0 | 1.8±1 | 7.2±10.3 | 1.00 ^{††} |
| Catheters | | | | |
| Arterial line | 203 (64) | 109 (53.4) | 94 (83.2) | <0.01* |
| Central line | 187 (59) | 99 (48.5) | 88 (77.9) | <0.01* |
| Swan-Ganz catheter | 31 (9.8) | 13 (6.4) | 18 (15.9) | <0.01* |
| Urinary catheter | 294 (92.7) | 188 (92.2) | 106 (93.8) | 0.60* |
| Antibiotics in the ICU | 218 (68.8) | 140 (68.6) | 78 (69.0) | 0.94* |
| Bacteremia | 16 (5.1) | 5 (2.5) | 11 (9.7) | <0.01* |
| Other procedures | | | | |
| Parenteral nutrition | 36 (11.4) | 17 (8.3) | 19 (16.8) | 0.02* |
| Blood transfusion sessions | 39 (12.3) | 18 (8.8) | 21 (18.6) | 0.01* |
| Chest tube | 21 (6.6) | 9 (4.4) | 12 (10.6) | 0.03* |
| Surgery | 15 (4.7) | 7 (3.4) | 8 (7.1) | 0.14* |
| Withholding and Withdrawing | 106 (33.4) | 20 (9.8) | 86 (76.1) | <0.01* |
| Days after admission (Me±SD) | 5.3±9.0 | 1.9 (2.4) | 6.1 (9.7) | 0.01 ^{††} |
| Advanced end of life instructions (%) | 54 (17.0) | 16 (7.8) | 38 (33.6) | <0.01** |

ICU: intensive care unit, MV: mechanical ventilation, NIV: non-invasive ventilation, RRT: renal replacement therapy. Me: mean, Md: median, IQR: interquartile range (25–75), SD: standard deviation.

* Pearson’s Chi-squared test.

** Fisher’s Exact Test.

[†] t-test.

^{††} Wilcoxon rank sum test.

<https://doi.org/10.1371/journal.pone.0198360.t002>

end of life instructions which almost doubled from 2000 to 2015. Survival rates among elderly patients remained similar in all three periods ($p = 0.27$) (S1 Fig), while mortality in younger patients significantly decreased (data not shown).

Medico-economic implications

We compared the financing of ICU stays by care-payers in the study population with a control group of all other stays of patients aged less than 90 years ($n = 15,893$) admitted to the ICU during the same period. The elderly population had a higher SAPS II score ($p < 0.01$), but the ICU LOS was similar in both groups ($p = 0.07$). Social security reimbursement was significantly lower in the study group, both per stay (13,160 vs. 22,092 Euros, $p < 0.01$) and per day of stay (3,305 vs. 4,332 Euros, $p = 0.03$). Over the previously defined study periods, we saw a divergence in the LOS and social security compensation between the study group and the

Table 3. Independent predictors of ICU mortality.

| Predictors of ICU mortality | Odds Ratio | 95%CI | p value |
|------------------------------|------------|---------------|---------|
| Univariate analysis | | | |
| Age | 1.00 | (0.89–1.11) | 0.98 |
| SAPS II | 1.08 | (1.06–1.09) | <0.01 |
| Mechanical ventilation | 9.51 | (5.32–17.59) | <0.01 |
| Non-invasive ventilation | 0.56 | (0.33–0.93) | 0.02 |
| Catecholamines | 4.24 | (2.53–7.22) | <0.01 |
| Renal replacement therapy | 2.30 | (0.88–6.16) | 0.06 |
| Bacteremia | 4.27 | (1.32–16.12) | <0.01 |
| Withholding and Withdrawing | 29.30 | (15.90–56.52) | <0.01 |
| Multivariate analysis | | | |
| Age | 0.88 | (0.72–1.08) | 0.22 |
| SAPS II | 1.09 | (1.05–1.12) | <0.01 |
| Mechanical ventilation | 4.83 | (1.59–15.82) | <0.01 |
| Non-invasive ventilation | 2.27 | (0.88–6.16) | 0.10 |
| Bacteremia | 4.60 | (0.63–36.52) | 0.14 |
| Withholding and Withdrawing | 202.25 | (50.3–1145.2) | <0.01 |

ICU: intensive care unit, SAPS II: simplified acute physiology score, 95% CI: confidence interval.

<https://doi.org/10.1371/journal.pone.0198360.t003>

control group. From 2000 to 2015, severity, LOS and reimbursements remained stable in the study population whereas in younger patients all three increased significantly (Tables 4 and 5).

Discussion

Most countries are now faced with the growing challenge related to global population ageing. In our region with good bed availability, ICU physicians have been admitting very old patients for a long time. Poor availability of ICU beds will require unbiased triage guidelines and it should ideally use different tools than in younger patients [22,23]. In this context, our data underscore two significant points: firstly, life expectancy of patients over 90 years old admitted to the ICU is limited to 3 years and secondly, the financial burden of critical care for these elderly patients is—on average—not on the increase compared with younger patients.

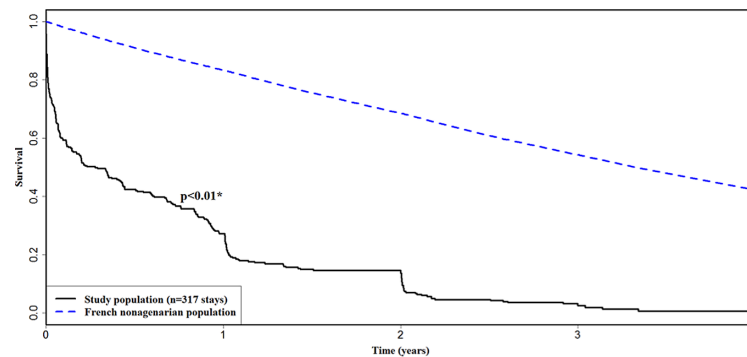


Fig 1. Survival from ICU admission. Kaplan-Meier survival curve of the study population in comparison with the French general population of similar age. Mortality data for the latter were obtained from INED [25]. ICU: intensive care unit. INED: institut national d'études démographiques. * Absolute Excess Risk test.

<https://doi.org/10.1371/journal.pone.0198360.g001>

Table 4. Comparison of social security compensation between the study population (nonagenarians) and the control population over the same period (all ICU patients < 90 years old).

| Medico-economic data | Control group n = 15893 (< 90 years) | Study group n = 317 (≥ 90 years) | p value |
|---|--------------------------------------|--|---------|
| All periods (2000–2015), n = 16210 patients | | | |
| SAPS II | 46.1±23.9 | 56±22.1 | <0.01 |
| ICU Length of stay (days) | 9.8±21.6 | 6.3±8.7 | 0.07 |
| Social Security retribution per stay (Euros) | 22092±30772 | 13160±11070 | <0.01 |
| Social Security retribution per day of stay (Euros) | 4332±8978 | 3305±3011 | 0.03 |

All data are Mean ±SD

SAPS II: simplified acute physiology score, SD: standard deviation.

<https://doi.org/10.1371/journal.pone.0198360.t004>

Our study showed a high ICU and in-hospital mortality. *Hwabejire et al.* [9] analyzed 474 trauma nonagenarians, with lower in-hospital mortality (9.5%) but higher 1-year mortality (40.5%). *Becker et al.* [24] examined 372 patients, the ICU and in-hospital mortality being 18.3% and 30.9% respectively. Other studies with elderly patients (mostly done with patients ≥ 80 years) demonstrated ICU mortality rates ranging from 15% to 50% [16]. In comparison, in-hospital mortality in younger ICU populations (45–65 years) ranges from 20% to

Table 5. Comparison of care-related income between study population (nonagenarians) and all other patients (< 90 years old).

| Periods of study | Control group n = 15893 (< 90 years) | Study group n = 317 (≥ 90 years) | p value |
|--|--------------------------------------|--|---------|
| 2000–2004 (n = 5781 patients) | | | |
| SAPS II | 40.7±25.5 | 52.5±19.7 | <0.01 |
| ICU Length of stay (days) | 8.8±24.8 | 6.4±8.0 | 0.08 |
| Social Security retribution (Euros) per stay | 16138±29025 | 12603±9088 | 0.85 |
| Social Security retribution (Eur) per day of stay | 3168±4375 | 2429±1513 | 0.79 |
| 2005–2009 (n = 4714 patients) | | | |
| SAPS II | 48.7±23.5 | 56.9±25.1 | <0.01 |
| ICU Length of stay (days) | 10.7±22.1 | 6.3±9.1 | <0.01 |
| Social Security retribution (Eur) per stay | 20852±33158 | 11912±10500 | <0.01 |
| Social Security retribution (Eur) per day of stay | 3428±6715 | 3091±2325 | 0.01 |
| 2010–2015 (n = 5715 patients) | | | |
| SAPS II | 49.3±21.3 | 58.7±21.0 | <0.01 |
| ICU Length of stay (days) | 10.1±17.2 | 6.3±9.1 | 0.03 |
| Social Security retribution (Eur) per stay | 24246±28793 | 14548±12031 | <0.01 |
| Social Security retribution (Eur) per day of stay | 5297±10940 | 3771±3778 | 0.30 |
| p value (comparing the three study periods) | | | |
| SAPS II | <0.00001 | 0.16 | |
| ICU Length of stay (days) | <0.00001 | 0.99 | |
| Social Security retribution (Eur) per stay | <0.00001 | 0.22 | |
| Social Security retribution (Eur) per day of stay | <0.00001 | 0.08 | |

All data are number (%) or Mean ±SD.

SAPS II: simplified acute physiology score, SD: standard deviation, Me: mean, Eur: euros, ICU: intensive care unit.

<https://doi.org/10.1371/journal.pone.0198360.t005>

30% [25]. The comparability between all these studies is limited by the fact that outcome is dependent on the patient's profile (medical or surgical, planned or unplanned admission) [26]. The fact that we had mainly medical and unplanned patients could explain our high mortality rate (likely leading to lower ICU costs); which is also being related to our liberal admission policy. Whereas age is identified as an independent risk factor for ICU mortality in non-selected populations, comorbidities, frailty and severity of illness appear to be more important risk factors than age itself in an elderly population [27].

ICU physicians also suggest that end-of-life decisions are not adequately weighed in this population with a poor short-term outcome [4]. We have observed an increasing number of end-of-life decisions over time in our study, which may explain why the ICU length of stay did not increase in the study population (≥ 90 years), yet it increased in younger patients. In fact, a high proportion of deaths in critically ill elderly patients follow a withdrawal of life-sustaining therapy. Furthermore, it is fundamental to assess the patient's opinion, especially as the elderly are often reluctant to undergo life-sustaining treatments [12]. A recent study reported that only 13% had been asked about their willingness to be admitted to the ICU [28].

Studies focused on very elderly patients (≥ 90 years) admitted to ICUs are scarce. *Becker et al.* [24] have detected age, the need for vasopressors and renal impairment as independent factors of bad outcome within the ICU, while elective surgery did not negatively impact outcome. In our study, chronological age was not *per se* a factor of bad prognosis and this was stable throughout the study period. In contrast, the need for MV was independently associated with poor prognosis. The influence of NIV on outcome in our study population remains unclear, since it looked protective only in univariate analysis. Given the fact that it can easily be performed elsewhere than in the ICU, our data suggest it be used without limit.

Most elderly patients are treated in ICUs at heavy costs, in cooperation if necessary with organ specialists. Few of them are visited by a geriatrician despite recent data suggesting a need of such involvement [29]. The holistic approach of geriatricians could lead to better decision-making, help in the triage process and remain a key factor in post-ICU care. Specific geriatric ICUs are exceedingly rare [30]. Combining a multidimensional and interdisciplinary approach to coordinate treatments with the recovery process could be an efficient way of treating approximatively half the nonagenarians studied who did not require respiratory support.

Limited resources, costs and controversial benefit are currently the main reasons for the debate regarding ICU access for elderly patients [8,13–14]. It has been demonstrated that these patients receive lower treatment intensity and less life-sustaining treatment than younger patients even after adjustment for severity of illness [15]. Overall, in our study, the total amount of money dedicated to elderly patients is significantly lower than that for younger patients. This data suggests that elderly patients undergoing intensive care do not constitute a heavier healthcare burden. Thus, in our economic model, cost of stay cannot be considered as an obstacle to admission in ICUs. Our results suggest that ICU costs have to be studied in line with a close to 0% life expectancy 3 years after ICU admission. Appropriateness of care should be the main priority, as it is for younger patients in which a 3-year life expectancy is not an obstacle to ICU care. These are several reasons why guidelines need to be published with a view to clarifying admission criteria for elderly patients [16].

Our results should be interpreted with caution on account of several limitations. Firstly, our single-center study provides findings that may not be transposable to settings where ICU availability is different. Secondly, our follow-up did not provide insights into functional status after discharge and assessment of frailty which is now used to evaluate outcome [6–7]. Thirdly, there is no estimate of costs associated with overall hospital stay nor post-hospital healthcare utilisation, which may be significant in this very old population. Finally, further studies on long-term outcome are needed [16].

Conclusion

Critically ill elderly patients (≥ 90 years) constitute a fast-expanding subgroup proposed for ICU admission. Until now, some physicians have been reluctant to admit them, mostly because of high in-hospital mortality; however prognosis is not as poor as often perceived. Our data suggests that chronological age is not a viable exclusion criterion for ICU admission, but rather that elderly patients should benefit of equitable access to ICUs. The present study adds to our understanding that there is no real financing issue regarding ICU care in patients over 90 years old.

Supporting information

S1 Table. Comparison of general characteristics of the study population according to the three consecutive periods of the study.

(DOCX)

S2 Table. Comparison of ICU procedures according to the three consecutive periods of the study.

(DOCX)

S1 Fig. Kaplan-Meier survival curves for the three periods of the study.

(TIF)

Acknowledgments

We thank Dr C. Brunhuber for her English proofreading of the manuscript.

Author Contributions

Conceptualization: Pierrick Le Borgne, Sophie Couraud, Georges Kaltenbach, Pascal Bilbault, Francis Schneider.

Data curation: Quentin Maestraggi, Sophie Couraud, François Lefebvre.

Formal analysis: Pierrick Le Borgne, Sophie Couraud, François Lefebvre, Baptiste Michard, Francis Schneider.

Investigation: Pierrick Le Borgne, Alexandra Boivin, Francis Schneider.

Methodology: Pierrick Le Borgne, Quentin Maestraggi, François Lefebvre, Alexandra Boivin, Pascal Bilbault, Francis Schneider.

Project administration: Jean-Etienne Herbrecht, Francis Schneider.

Resources: Pierrick Le Borgne.

Software: Jean-Etienne Herbrecht.

Supervision: Pierrick Le Borgne, Quentin Maestraggi, Sophie Couraud, François Lefebvre, Jean-Etienne Herbrecht, Alexandra Boivin, Baptiste Michard, Vincent Castelain, Georges Kaltenbach, Francis Schneider.

Validation: Pierrick Le Borgne, Quentin Maestraggi, Sophie Couraud, François Lefebvre, Jean-Etienne Herbrecht, Alexandra Boivin, Baptiste Michard, Vincent Castelain, Georges Kaltenbach, Francis Schneider.

Visualization: Pierrick Le Borgne, Alexandra Boivin, Francis Schneider.

Writing – original draft: Pierrick Le Borgne, Sophie Couraud, Pascal Bilbault, Francis Schneider.

Writing – review & editing: Pierrick Le Borgne, Baptiste Michard, Vincent Castelain, Georges Kaltenbach, Pascal Bilbault, Francis Schneider.

References

1. Howden LM, Meyer JA. Age and Sex Composition: 2010. Washington, DC: US Census Bureau; May 2011. 2010 Census Brief C2010BR-03. <http://www.census.gov/prod/cen2010/briefs/c2010br-03.pdf>. Accessed february 19 2017.
2. Bagshaw SM, Webb SAR, Delaney A, George C, Pilcher D, Hart GK, et al. Very old patients admitted to intensive care in Australia and New Zealand: a multi-centre cohort analysis. *Crit Care*. 2009; 13(2):R45. <https://doi.org/10.1186/cc7768> PMID: 19335921
3. Docherty AB, Anderson NH, Walsh TS, Lone NI. Equity of Access to Critical Care Among Elderly Patients in Scotland: A National Cohort Study. *Crit Care Med*. 2016; 44(1):3–13. <https://doi.org/10.1097/CCM.0000000000001377> PMID: 26672922
4. Garrouste-Orgeas M, Boumendil A, Pateron D, Aegerter P, Somme D, Simon T, et al. Selection of intensive care unit admission criteria for patients aged 80 years and over and compliance of emergency and intensive care unit physicians with the selected criteria: An observational, multicenter, prospective study. *Crit Care Med*. 2009; 37(11):2919–28. PMID: 19866508
5. Sprung CL, Artigas A, Kesecioglu J, Pezzi A, Wiis J, Pirracchio R, et al. The Eldicus prospective, observational study of triage decision making in European intensive care units. Part II: intensive care benefit for the elderly. *Crit Care Med*. 2012; 40(1):132–8. <https://doi.org/10.1097/CCM.0b013e318232d6b0> PMID: 22001580
6. Flaatten H, De Lange DW, Morandi A, Andersen FH, Artigas A, Bertolini G, et al. The impact of frailty on ICU and 30-day mortality and the level of care in very elderly patients (≥ 80 years). *Intensive Care Med*. 2017; 43(12):1820–8. <https://doi.org/10.1007/s00134-017-4940-8> PMID: 28936626
7. Clegg A, Young J, Iliffe S, Rikkert MO, Rockwood K. Frailty in elderly people. *Lancet*. 2013; 381(9868):752–62. [https://doi.org/10.1016/S0140-6736\(12\)62167-9](https://doi.org/10.1016/S0140-6736(12)62167-9) PMID: 23395245
8. Leblanc G, Boumendil A, Guidet B. Ten things to know about critically ill elderly patients. *Intensive Care Med*. 2017; 43(2):217–9. <https://doi.org/10.1007/s00134-016-4477-2> PMID: 27492269
9. Hwabejire JO, Kaafarani HMA, Lee J, Yeh DD, Fagenholz P, King DR, et al. Patterns of injury, outcomes, and predictors of in-hospital and 1-year mortality in nonagenarian and centenarian trauma patients. *JAMA Surg*. 2014; 149(10):1054–9. <https://doi.org/10.1001/jamasurg.2014.473> PMID: 25133434
10. Garrouste-Orgeas M, Tabah A, Vesin A, Philippart F, Kpodji A, Bruel C, et al. The ETHICA study (part II): simulation study of determinants and variability of ICU physician decisions in patients aged 80 or over. *Intensive Care Med*. 2013; 39(9):1574–83. <https://doi.org/10.1007/s00134-013-2977-x> PMID: 23765237
11. Heyland DK, Garland A, Bagshaw SM, Cook D, Rockwood K, Stelfox HT, et al. Recovery after critical illness in patients aged 80 years or older: a multi-center prospective observational cohort study. *Intensive Care Med*. 2015; 41(11):1911–20. <https://doi.org/10.1007/s00134-015-4028-2> PMID: 26306719
12. Philippart F, Vesin A, Bruel C, Kpodji A, Durand-Gasselien B, Garçon P, et al. The ETHICA study (part I): elderly's thoughts about intensive care unit admission for life-sustaining treatments. *Intensive Care Med*. 2013; 39(9):1565–73. <https://doi.org/10.1007/s00134-013-2976-y> PMID: 23765236
13. Guidet B, Beale R. Should cost considerations be included in medical decisions? Yes. *Intensive Care Med*. 2015; 41(10):1838–40. <https://doi.org/10.1007/s00134-015-3988-6> PMID: 26215681
14. Chin-Yee N, D'Egidio G, Thavorn K, Heyland D, Kyeremanteng K. Cost analysis of the very elderly admitted to intensive care units. *Crit Care*. 2017; 21(1):109. <https://doi.org/10.1186/s13054-017-1689-y> PMID: 28506243
15. Boumendil A, Aegerter P, Guidet B, CUB-Rea Network. Treatment intensity and outcome of patients aged 80 and older in intensive care units: a multicenter matched-cohort study. *J Am Geriatr Soc*. 2005; 53(1):88–93. <https://doi.org/10.1111/j.1532-5415.2005.53016.x> PMID: 15667382
16. Flaatten H, de Lange DW, Artigas A, Bin D, Moreno R, Christensen S, et al. The status of intensive care medicine research and a future agenda for very old patients in the ICU. *Intensive Care Med*. 2017; 43(9):1319–28. <https://doi.org/10.1007/s00134-017-4718-z> PMID: 28238055
17. McCabe WR, Jackson GG. Gram-Negative Bacteremia: I. Etiology and Ecology. *Arch Intern Med*. 1962; 110(6):847–55.

18. Knaus WA, Zimmerman JE, Wagner DP, Draper EA, Lawrence DE. APACHE-acute physiology and chronic health evaluation: a physiologically based classification system. *Crit Care Med.* 1981; 9(8):591–7. PMID: [7261642](#)
19. Charlson ME, Pompei P, Ales KL, MacKenzie CR. A new method of classifying prognostic comorbidity in longitudinal studies: development and validation. *J Chronic Dis.* 1987; 40(5):373–83. PMID: [3558716](#)
20. Le Gall JR, Lemeshow S, Saulnier F. A new Simplified Acute Physiology Score (SAPS II) based on a European/North American multicenter study. *JAMA.* 1993; 270(24):2957–63. PMID: [8254858](#)
21. Tables de Mortalité Françaises pour les 19ème et 20ème Siècles et Projections pour le 21ème Siècle. Institut National d'Etudes Démographiques (INED); 2016. <http://www.ined.fr/fr/tout-savoir-population/chiffres/france/mortalite-cause-deces/esperance-vie/>, Accessed March 19 2017.
22. Guidet B, Leblanc G, Simon T, Woimant M, Quenot J-P, Ganansia O, et al. Effect of Systematic Intensive Care Unit Triage on Long-term Mortality Among Critically Ill Elderly Patients in France: A Randomized Clinical Trial. *JAMA.* 2017; 318(15):1450–9. <https://doi.org/10.1001/jama.2017.13889> PMID: [28973065](#)
23. Nates JL, Nunnally M, Kleinpell R, Blosser S, Goldner J, Birriel B, et al. ICU Admission, Discharge, and Triage Guidelines: A Framework to Enhance Clinical Operations, Development of Institutional Policies, and Further Research. *Crit Care Med.* 2016; 44(8):1553–602. <https://doi.org/10.1097/CCM.0000000000001856> PMID: [27428118](#)
24. Becker S, Müller J, de Heer G, Braune S, Fuhrmann V, Kluge S. Clinical characteristics and outcome of very elderly patients ≥ 90 years in intensive care: a retrospective observational study. *Ann Intensive Care.* 2015; 5(1):53.
25. Peigne V, Somme D, Guérot E, Lenain E, Chatellier G, Fagon J-Y, et al. Treatment intensity, age and outcome in medical ICU patients: results of a French administrative database. *Ann Intensive Care.* 2016; 6(1):7. <https://doi.org/10.1186/s13613-016-0107-y> PMID: [26769605](#)
26. de Rooij SE, Abu-Hanna A, Levi M, de Jonge E. Factors that predict outcome of intensive care treatment in very elderly patients: a review. *Crit Care.* 2005; 9(4):R307–314. <https://doi.org/10.1186/cc3536> PMID: [16137342](#)
27. Muscedere J, Waters B, Varambally A, Bagshaw SM, Boyd JG, Maslove D, et al. The impact of frailty on intensive care unit outcomes: a systematic review and meta-analysis. *Intensive Care Med.* 2017; 43(8):1105–22. <https://doi.org/10.1007/s00134-017-4867-0> PMID: [28676896](#)
28. Le Guen J, Boumendil A, Guidet B, Corvol A, Saint-Jean O, Somme D. Are elderly patients' opinions sought before admission to an intensive care unit? Results of the ICE-CUB study. *Age Ageing.* 2016; 45(2):303–9. <https://doi.org/10.1093/ageing/afv191> PMID: [26758531](#)
29. Guidet B, De Lange DW, Christensen S, Moreno R, Fjølner J, Dumas G, et al. Attitudes of physicians towards the care of critically ill elderly patients—a European survey. *Acta Anaesthesiol Scand.* 2018; 62(2):207–19. <https://doi.org/10.1111/aas.13021> PMID: [29072306](#)
30. Zeng A, Song X, Dong J, Mitnitski A, Liu J, Guo Z, et al. Mortality in Relation to Frailty in Patients Admitted to a Specialized Geriatric Intensive Care Unit. *J Gerontol A Biol Sci Med Sci.* 2015; 70(12):1586–94. <https://doi.org/10.1093/gerona/glv084> PMID: [26400736](#)