



HAL
open science

Late infectious endocarditis of surgical patch closure of atrial septal defects diagnosed by 18F-fluorodeoxyglucose gated cardiac computed tomography (18F-FDG-PET/CT): a case report

Estelle Honnorat, Piseth Seng, Alberto Riberi, Gilbert Habib, Andreas Stein

► **To cite this version:**

Estelle Honnorat, Piseth Seng, Alberto Riberi, Gilbert Habib, Andreas Stein. Late infectious endocarditis of surgical patch closure of atrial septal defects diagnosed by 18F-fluorodeoxyglucose gated cardiac computed tomography (18F-FDG-PET/CT): a case report. *BMC Research Notes*, 2016, 9 (1), pp.416. 10.1186/s13104-016-2223-z . inserm-02076919

HAL Id: inserm-02076919

<https://inserm.hal.science/inserm-02076919>

Submitted on 22 Mar 2019

HAL is a multi-disciplinary open access archive for the deposit and dissemination of scientific research documents, whether they are published or not. The documents may come from teaching and research institutions in France or abroad, or from public or private research centers.

L'archive ouverte pluridisciplinaire **HAL**, est destinée au dépôt et à la diffusion de documents scientifiques de niveau recherche, publiés ou non, émanant des établissements d'enseignement et de recherche français ou étrangers, des laboratoires publics ou privés.

CASE REPORT

Open Access



Late infectious endocarditis of surgical patch closure of atrial septal defects diagnosed by 18F-fluorodeoxyglucose gated cardiac computed tomography (18F-FDG-PET/CT): a case report

Estelle Honnorat^{1,2†}, Piseth Seng^{1,2*†} , Alberto Riberi³, Gilbert Habib⁴ and Andreas Stein^{1,2}

Abstract

Background: In contrast to percutaneous atrial septal occluder device, surgical patch closure of atrial defects was known to be no infective endocarditis risk.

Case presentation: We herein report the first case of late endocarditis of surgical patch closure of atrial septal defects occurred at 47-year after surgery. On September 2014, a 56-year-old immunocompetent French Caucasian man was admitted into the Emergency Department for 3-week history of headache, acute decrease of psychomotor performance and fever at 40 °C. The diagnosis has been evoked during his admission for the management of a brain abscess and confirmed using 18F-fluorodeoxyglucose gated cardiac computed tomography (18F-FDG-PET/CT). Bacterial cultures of surgical deep samples of brain abscess were positive for *Streptococcus intermedius* and *Aggregatibacter aphrophilus* as identified by the matrix-assisted laser desorption/ionization-time of flight (MALDI-TOF) mass spectrometry and confirmed with 16S rRNA gene sequencing. The patient was treated by antibiotics for 8 weeks and surgical patch closure removal.

Conclusions: In summary, late endocarditis on surgical patch and on percutaneous atrial septal occluder device of atrial septal defects is rare. Cardiac imaging by the 18F-fluorodeoxyglucose gated cardiac computed tomography (18F-FDG-PET/CT) could improve the diagnosis and care endocarditis on surgical patch closure of atrial septal defects while transthoracic and transesophageal echocardiography remained difficult to interpret.

Keywords: Infective endocarditis, Atrial septal defects, Surgical patch closure, *Aggregatibacter aphrophilus*, *Streptococcus intermedius*, PET scan, 18F-FDG-PET/CT, Brain abscess, Diagnosis, Treatment, Infection, Bacteria, Human

Background

Infectious complication of atrial septal occlude device is rare that represented about 0.1 % of cases [1]. We herein report the first case of endocarditis at 47-year after surgical closure of atrial septal defects discovered by positron

emission tomography with 18F-fluorodeoxyglucose gated cardiac computed tomography (18F-FDG-PET/CT).

Case presentation

On September 2014, a 56-year-old immunocompetent French Caucasian man was admitted into the Emergency Department for 3-week history of headache, acute decrease of psychomotor performance and fever at 40 °C. In his medical past-history, he underwent a surgical patch closure of atrial septal defects for patent foramen ovale at 9 years old and dental care at 5 months

*Correspondence: sengpiseth@yahoo.fr

†Estelle Honnorat and Piseth Seng contributed equally to this work

² Aix Marseille Univ, INSERM 1095, CNRS 7278, IRD 198, URMITE, Marseille, France

Full list of author information is available at the end of the article

before his admission. Laboratory investigations revealed an elevated leukocyte count at $12.6 \times 10^9/L$ with an elevated neutrophil count at $8.4 \times 10^9/L$, a normal platelet count at $180 \times 10^9/L$, an elevated C reactive protein rate at 97 mg/L and negative blood culture. A brain magnetic resonance imaging (MRI) revealed a right occipital cerebral abscess ($27 \times 36 \times 43$ mm, hyper intense T2) (Fig. 1).

He underwent surgical brain abscess drainage. Bacterial cultures of surgical deep samples of brain abscess were positive for *Streptococcus intermedius* and *Aggregatibacter aphrophilus* as identified by the matrix-assisted laser desorption/ionization-time of flight (MALDI-TOF) mass spectrometry and confirmed with molecular identification (16 s gene sequencing). The patient was treated first with an empiric antibiotherapy with cefotaxim 4 g every 8 h associated with metronidazole 500 mg every 8 h and cotrimoxazole 800/160 mg every 8 h. One week later, the antibiotic treatment was modified for ceftriaxone 2 g/day associated with metronidazole 500 mg every 8 h and rifampicin 300 mg every 8 h.

A transthoracic echocardiographic examination and a body scan revealed no abnormality. A transesophageal echocardiography showed a high right left shunt suggestive of atrial septal patch dehiscence without direct sign of. An 18F-FDG-PET/CT showed an intense linear hypermetabolism opposite the interauricular septum compatible with an endocarditis on the intracardiac device (Fig. 2). Transesophageal echocardiography after 6 weeks of antibiotic treatment showed a filamentous image opposite the mitral valve and no vegetation image was found. A second 18F-FDG-PET/CT kept showing

hypermetabolism on the surgical patch closure of atrial septal defects. The patient was treated by antibiotics for 8 weeks.

At the end of antibiotic treatment transthoracic echocardiographic examination showed an exclusive right left shunt, confirming dehiscence of the surgical patch closure of atrial septal defects. Surgical removal of surgical patch closure of atrial septal defects was necessary on April 2015 with replacement by a bovine pericardial patch. No antibiotics were given during explantation. Explanted atrial surgical patch closure of atrial septal defects looked swollen and calcified with negative bacterial cultures. The patient recovered without further complication. His hemiparesis fully disappeared; he only kept discrete amnesic and attentional failures. He presents a sequelae of attentional and memory deficits at 1 year of follow-up.

Discussion

In contrast to percutaneous atrial septal occluder device, surgical patch closure of atrial septal defects was known to be associated with no infective endocarditis risk [2]. To our best knowledge, only one case of endocarditis on surgical patch of ventricular septal defect [3] and 17 cases of bacterial endocarditis on percutaneous atrial septal occluder device [4–15] have been reported. In our case, the late onset of the infection occurred at 47-year after surgery, and it suggests that origin of endocarditis of surgical patch closure of atrial septal defects was a hematogenous spread of bacteria during the dental care at 5 months before. Diagnosis of endocarditis on atrial septal occluder device is generally done by transthoracic echocardiographic or transesophageal echocardiography. Therefore, in our case the diagnosis has been evoked during his admission for the management of a brain abscess, and established using 18F-FDG-PET/CT while transthoracic and transesophageal echocardiography remained difficult to interpret. The benefit of 18F-FDG-PET/CT has been demonstrated in the diagnosis of prosthetic valve endocarditis cardiac device-related endocarditis for detect infection by highlighting inflammatory leukocytes express a high density of glucose transporters and are highly metabolically active with the high spatial resolution of cardiac tomography and angiography, and it was recently added to the diagnosis of infective endocarditis criteria [16, 17].

Conclusion

In summary, late endocarditis on surgical patch and on percutaneous atrial septal occluder device of atrial septal defects is rare. We believe that the contribution of 18F-FDG-PET/CT could improve the diagnosis and care of endocarditis on surgical patch closure or percutaneous atrial septal

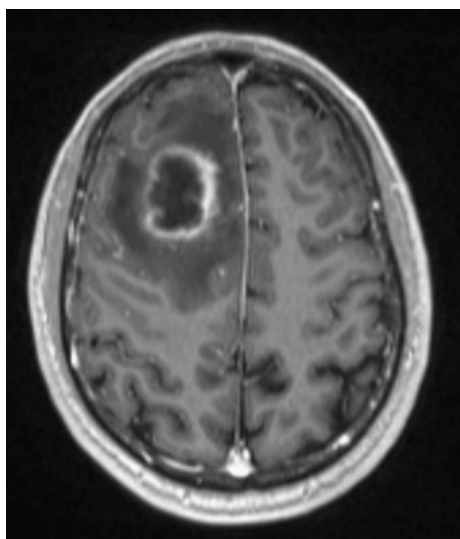
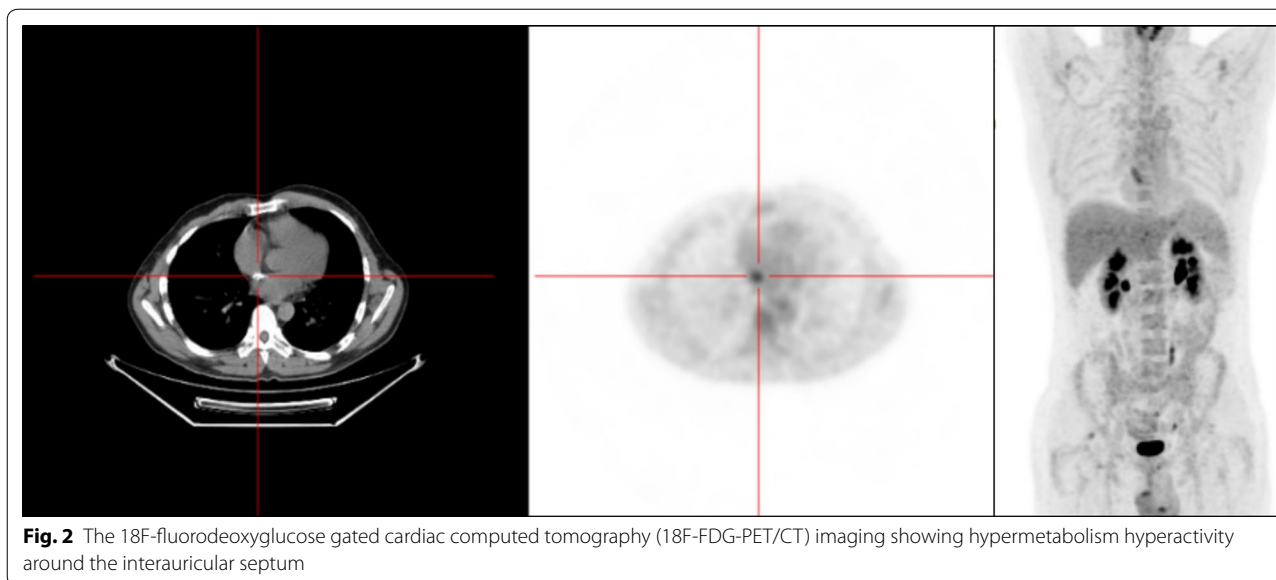


Fig. 1 A brain magnetic resonance imaging (MRI) showing a unique brain abscess ($27 \times 36 \times 43$ mm)



occluder device of atrial septal defects. A prolonged anti-biotherapy and surgical management with surgical patch removal is a major therapeutic option of endocarditis on surgical patch closure of atrial septal defects.

Abbreviations

MALDI-TOF mass spectrometry: the matrix-assisted laser desorption/ionization-time of flight mass spectrometry; 18F-FDG-PET/CT: 18F-fluorodeoxyglucose positron emission tomography/computed tomography; MRI: magnetic resonance imaging.

Authors' contributions

EH involved in clinical data collection and the drafting of the manuscript. PS involved in the drafting of the manuscript and manuscript revision. AR provided clinical data verification and revision of the manuscript. GH provided clinical data verification and revision of the manuscript. AS provided clinical data verification, corrected the discussion section, and approved the final version to be published. All authors read and approved the final manuscript.

Author details

¹ Assistance Publique - Hôpitaux de Marseille (APHM), Service de Maladies Infectieuses, Hôpital de la Conception, 147, boulevard Baille, Marseille, France. ² Aix Marseille Univ, INSERM 1095, CNRS 7278, IRD 198, URMITE, Marseille, France. ³ Department of Cardiac Surgery, La Timone Hospital, Aix-Marseille University, 13385 Marseille, France. ⁴ Department of Cardiology, La Timone Hospital, Aix-Marseille University, Rue Saint-Pierre, 13385 Marseille, France.

Acknowledgements

The authors thank Catherine Peruffo for her assistance in acquisition of data. The authors obtained permission from Catherine Peruffo to acknowledge.

Competing interests

The authors declare that they have no competing interests.

Availability of data and materials

Medical imaging data will not be shared because it is not fully anonymous.

Consent to publish

Written informed consent was obtained from the patient for publication of this Case Report and any accompanying images.

Ethics approval and consent to participate

This study was approved by the institutional research ethics board (*Comite de Protection des Personnes Sud Méditerranée 1*), and written informed consent was obtained from the patient to participate to this case report and any accompanying images.

Funding

The authors have no relevant affiliations or involvement with any organization or entity with a financial interest or conflict with the subject matter or materials discussed in the manuscript. No writing assistance was utilized in the production of this manuscript.

Received: 13 May 2016 Accepted: 15 August 2016

Published online: 24 August 2016

References

1. Agarwal S, Bajaj NS, Kumbhani DJ, Tuzcu EM, Kapadia SR. Meta-analysis of transcatheter closure versus medical therapy for patent foramen ovale in prevention of recurrent neurological events after presumed paradoxical embolism. *JACC Cardiovasc. Interv.* 2012;5:777–89.
2. Hopkins RA, Bert AA, Buchholz B, Guarino K, Meyers M. Surgical patch closure of atrial septal defects. *Ann Thorac Surg.* 2004;77:2144–50.
3. Miyazaki T, Yamagishi M, Yaku H. Reoperation for prosthetic ventricular septal defect patch endocarditis: long-term results with an autologous atrial septal patch. *Gen Thorac Cardiovasc Surg.* 2011;59:753–5.
4. Divchev D, Podewski EK, Mengel M, Meyer GP, Drexler H, Schaefer A. Inflammatory, abscess-forming foreign body reaction mimics a thrombus formation on an atrial septal defect closure device: a commented case report. *Eur J Echocardiogr.* 2007;8:298–302.
5. Walpot J, Amsel B, Rodrigus I, Pasteuning WH, Koeman J, Hokken R. Late infective endocarditis of an atrial septal occluder device presenting as a cystic mass. *Echocardiography.* 2011;28:E131–3.
6. Aruni B, Sharifian A, Eryazici P, Herrera CJ. Late bacterial endocarditis of an Amplatzer atrial septal device. *Indian Heart J.* 2013;65:450–1.
7. Slesnick TC, Nugent AW, Fraser CD, Cannon BC. Images in cardiovascular medicine. Incomplete endothelialization and late development of acute bacterial endocarditis after implantation of an Amplatzer septal occluder device. *Circulation.* 2008;117:e326–7.
8. Zahr F, Katz WE, Toyoda Y, Anderson WD. Late bacterial endocarditis of an amplatzer atrial septal defect occluder device. *Am J Cardiol.* 2010;105:279–80.

9. Calachanis M, Carrieri L, Grimaldi R, Veglio F, Orzan F. Infective endocarditis after transcatheter closure of a patent foramen ovale. *Catheter Cardiovasc Interv.* 2004;63:351–4.
10. Goldstein JA, Beardslee MA, Xu H, Sundt TM, Lasala JM. Infective endocarditis resulting from CardioSEAL closure of a patent foramen ovale. *Catheter Cardiovasc Interv.* 2002;55:217–20 (**discussion 221**).
11. Balasundaram RP, Anandaraja S, Juneja R, Choudhary SK. Infective endocarditis following implantation of amplatzer atrial septal occluder. *Indian Heart J.* 2005;57:167–9.
12. Mitchell ARJ, Leeson P, Timperley J, Myerson SG, Becher H, Goldman J. Atrial septal endocarditis. *Eur J Echocardiogr J.* 2007;8:48–9.
13. Stöllberger C, Bastovansky A, Finsterer J. Fatal septicemia in a patient with cerebral lymphoma and an Amplatzer septal occluder: a case report. *J Med Case Reports.* 2011;5:554.
14. Scheuerman O, Bruckheimer E, Marcus N, Hoffer V, Garty B-Z. Endocarditis after closure of ventricular septal defect by transcatheter device. *Pediatrics.* 2006;117:e1256–8.
15. Krantz SB, Lawton JS. Subacute endocarditis of an atrial septal closure device in a patient with a patent foramen ovale. *Ann Thorac Surg.* 2014;98:1821–3.
16. Saby L, Laas O, Habib G, Cammilleri S, Mancini J, Tessonnier L, et al. Positron emission tomography/computed tomography for diagnosis of prosthetic valve endocarditis: increased valvular 18F-fluorodeoxyglucose uptake as a novel major criterion. *J Am Coll Cardiol.* 2013;61:2374–82.
17. Pizzi MN, Roque A, Fernández-Hidalgo N, Cuéllar-Calabria H, Ferreira-González I, González-Alujas MT, et al. Improving the diagnosis of infective endocarditis in prosthetic valves and intracardiac devices with 18F-fluorodeoxyglucose positron emission tomography/computed tomography angiography: initial results at an infective endocarditis referral center. *Circulation.* 2015;132:1113–26.

Submit your next manuscript to BioMed Central and we will help you at every step:

- We accept pre-submission inquiries
- Our selector tool helps you to find the most relevant journal
- We provide round the clock customer support
- Convenient online submission
- Thorough peer review
- Inclusion in PubMed and all major indexing services
- Maximum visibility for your research

Submit your manuscript at
www.biomedcentral.com/submit

