



HAL
open science

On the genetic bases of incomplete hippocampal inversion: a genome-wide association study

Claire Cury, Marzia A Scelzi, Roberto Toro, Vincent Frouin, Eric Artiges, Andreas Heinz, Henrik W Walter, Hervé Lemaître, Jean-Luc Martinot, Jean-Baptiste Poline, et al.

► To cite this version:

Claire Cury, Marzia A Scelzi, Roberto Toro, Vincent Frouin, Eric Artiges, et al.. On the genetic bases of incomplete hippocampal inversion: a genome-wide association study. OHBM 2019 - Annual Meeting on Organization for Human Brain Mapping, Jun 2019, Rome, Italy. pp.1. inserm-02074616

HAL Id: inserm-02074616

<https://inserm.hal.science/inserm-02074616v1>

Submitted on 5 Jun 2019

HAL is a multi-disciplinary open access archive for the deposit and dissemination of scientific research documents, whether they are published or not. The documents may come from teaching and research institutions in France or abroad, or from public or private research centers.

L'archive ouverte pluridisciplinaire **HAL**, est destinée au dépôt et à la diffusion de documents scientifiques de niveau recherche, publiés ou non, émanant des établissements d'enseignement et de recherche français ou étrangers, des laboratoires publics ou privés.

On the genetic bases of incomplete hippocampal inversion: a genome-wide association study

Claire Cury^{1,2}, Marzia Antonella Scelsi², Roberto Toro³, Vincent Frouin⁴, Eric Artiges⁵, Andreas Heinz⁶, Henrik Walter⁶, Hervé Lemaître⁸, Jean-Luc Martinot⁵, Jean-Baptiste Poline⁹, Michael Smolka¹⁰, Gunter Schumann¹¹, Andre Altmann^{*2}, Olivier Colliot^{*12}

Inria
INVENTEURS DU MONDE NUMÉRIQUE

1 Inria/IRISA Rennes, France. 2 University College London, UK. 3 Institut Pasteur, France. 4 CEA, Neurospin, France. 5 INSERM Unit 1000, France. 6 Charité-Universitätsmedizin, Germany. 8 Hôpital Necker, Paris, France. 9 McGill University, Canada. 10 Technische Universität Dresden, Germany. 11 King's College London, UK. 12 Aramis Lab, ICM, France.

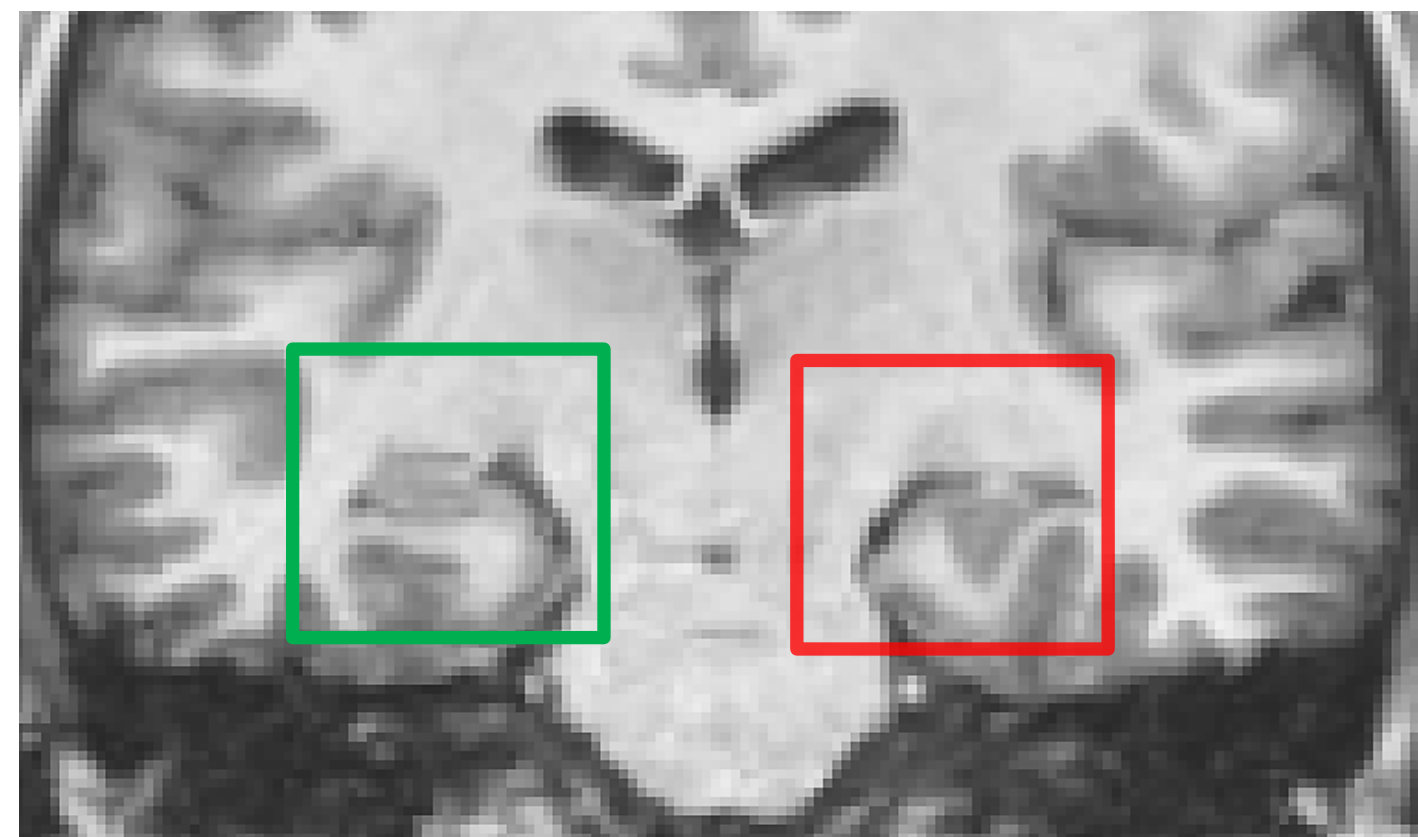
UCL

INTRODUCTION

Incomplete hippocampal inversion (IHI), is an anatomical variant of the hippocampus present in about 20% of healthy individuals (Baulac et al., 1998; Bajic et al, 2008, Bernasconi et al, 2005, Cury et al, 2015).

No IHI :

Hippocampus flat, properly inverted



IHI

- Rounded shape
- Medial position
- Deep and vertical collateral sulcus

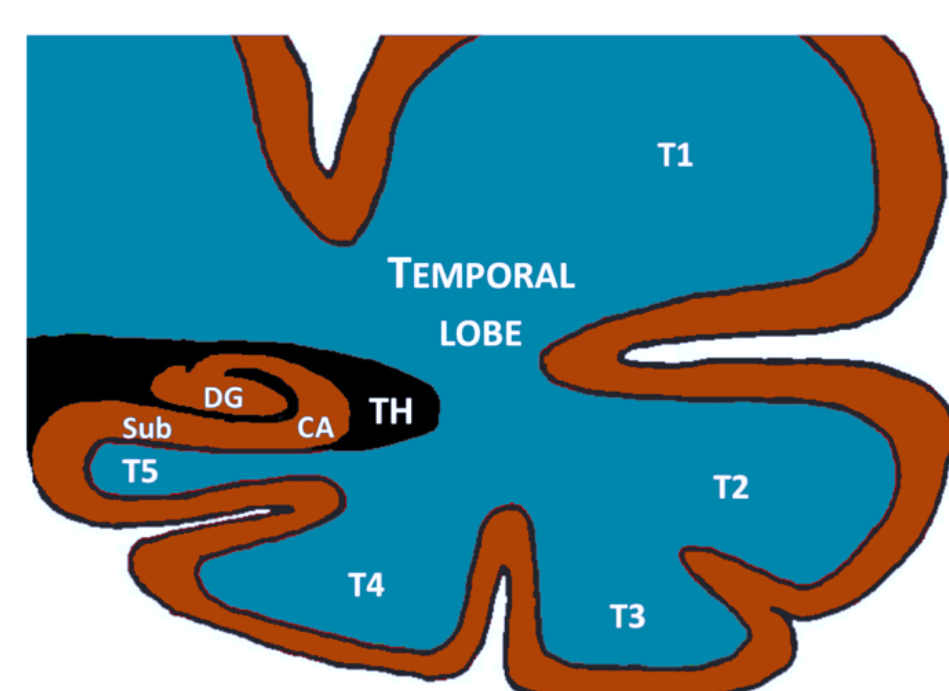
→ We performed the first genome-wide association study (GWAS) of IHI to unveil the **genetic factors** that may contribute to **incomplete inversion** during brain development.

METHODS

DATA	DISCOVERY COHORT: IMAGEN (N = 1381)	VALIDATION COHORT: PING (N = 161)
DESCRIPTION	mean age=14.5 years 49.7% females	mean age=16.1 years 48.4% females
GENOTYPING	blood samples on 610-Quad SNP and 660-Quad SNP arrays from Illumina	saliva samples on Human660W-Quad arrays from Illumina
ANCESTRY	European	European
IHI	26.1%	23.6%

IHI scoring (Cury et al. 2015):

- Manual scoring of the IHI using individual criteria (Cury et al 2015)
- A cut off at 4 was used to classify hippocampi in the IHI group or in the non-IHI.



Pre-processings steps :

- Raw genotyping data were prepared for imputation and haplotype reference consortium (HRC) v1.1
- SNPs were imputed on the Sanger imputation server¹ using EAGLE2 for pre-phasing and PBWT for imputation.
- QC was conducted on SNP level leaving 6,742,645 SNPs across the autosomes for the association analysis.

GWAS with Plink v1.9 :

- assuming an additive genetic model
- correcting for sex, age and five principal components for population structure and with a standard genome-wide threshold of $p < 5e-8$.

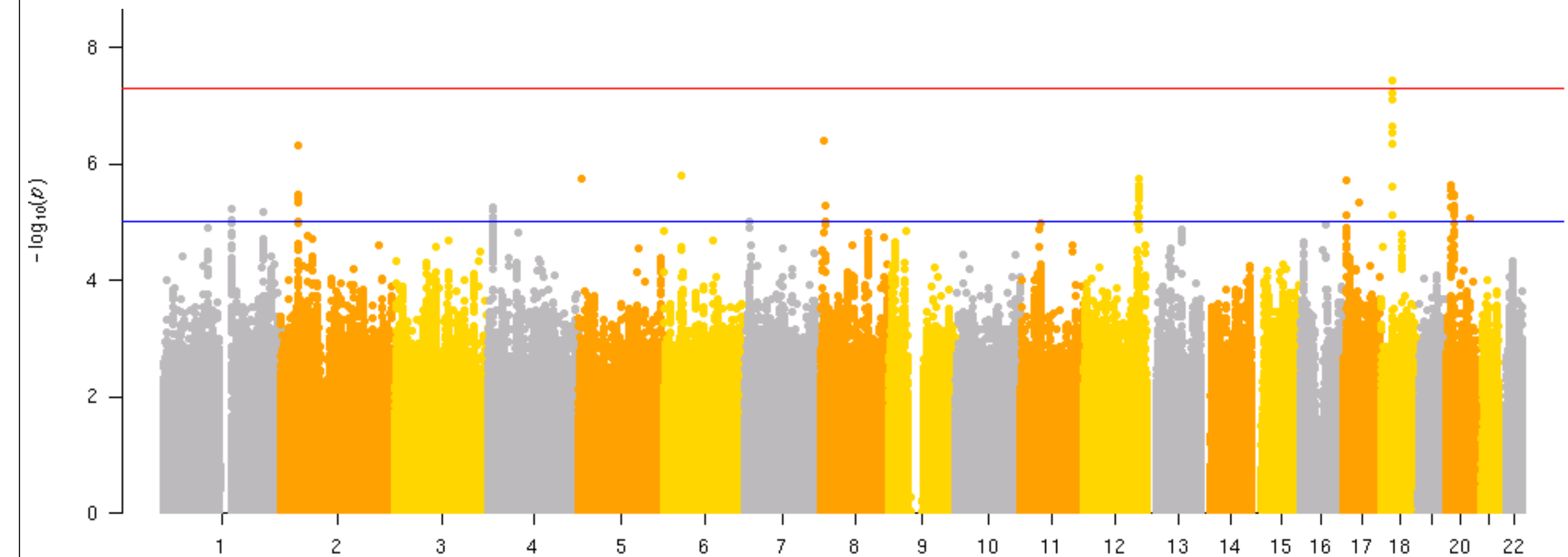
SNPs selection for validation:

- Validation cohort: SNPs exceeding the threshold for suggestive association with IHI ($p < 1e-5$).
- If the **top SNP not genotyped** in PING, LDlink² was used to identify a proxy in linkage disequilibrium LD (r^2) within +/- 50kb of its location.

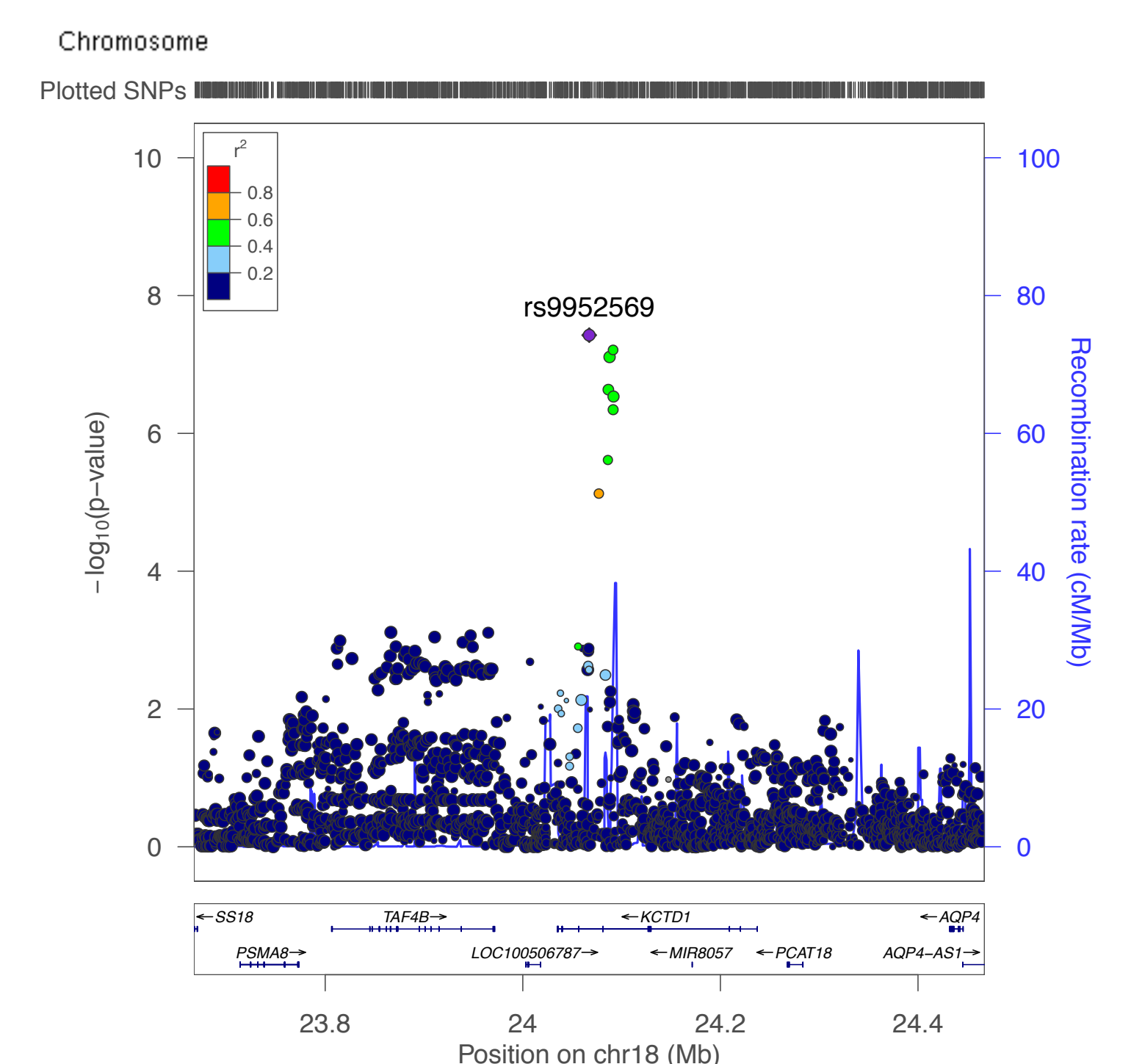
GWAS summary statistics:

- Statistics annotated using the FUnctional Mapping and Annotation (FUMA)³.
- IHI heritability estimated from GWAS statistics using LD score regression method (Bulik-Sullivan et al, 2015)

RESULTS



- A locus on 18q11.2 (rs9952569; OR=1.999; Z=5.502; P=3.755e-8) showed a **significant association with the presence of IHI**.
- Functional annotation of the locus implicated the genes **AQP4** (Aquaporin-4) and **KCTD1** (Potassium Channel Tetramerization Domain Containing 1).



- The gene **KCTD1** **negatively regulates** the AP-2 family of transcription factors and the Wnt signaling pathway, which **controls normal embryonic development**, cellular proliferation and growth (Li et al., 2014).
- The gene **AQP4** is a bidirectional water channel that is found on astrocytes throughout the central nervous system.
- Neither this locus nor the other 16 suggestive loci reached a significant p-value in the validation cohort.
- The inferred **heritability** was substantial with $h^2=0.54$ (sd: 0.30) and was significant (Z=1.8; P=0.036).

- **WE PROPOSED THE FIRST GENOME-WIDE ASSOCIATION STUDY OF IHI, WHERE WE IDENTIFIED A GENOME-WIDE SIGNIFICANT LOCUS.**
- **THIS LOCUS WAS NOT SIGNIFICANT IN THE VALIDATION COHORT**
- **ADDITIONAL EXPLORATION OF THE RESULTING SUMMARY STATISTICS REVEALED A HIGH HERITABILITY.**

Baulac, M., De Grissac, N., Hasboun, D., Oppenheim, C., Adam, C., Arzimanoglou, A., ... Berger, B. (1998). Hippocampal developmental changes in patients with partial epilepsy: magnetic resonance imaging and clinical aspects. *Annals of Neurology*, 44, 223–233. <https://doi.org/10.1002/ana.410440213>

Bernasconi, N., Kinay, D., Andermann, F., Antel, S., & Bernasconi, A. (2005). Analysis of shape and positioning of the hippocampal formation: an MRI study in patients with partial epilepsy and healthy controls. *Brain: A Journal of Neurology*, 128, 2442–2452. <https://doi.org/10.1093/brain/awh599>

Bajic, D., Wang, C., Kumlien, E., Mattsson, P., Lundberg, S., Eeg-Olofsson, O., & Raininko, R. (2008). Incomplete inversion of the hippocampus - A common developmental anomaly. *European Radiology*, 18(1), 138–142. <https://doi.org/10.1007/s00330-007-0735-6>

Cury, C., Toro, R., Cohen, F., Fischer, C., Mhaya, A., Samper-González, J., ... Consortium, I. (2015). Incomplete Hippocampal Inversion: A Comprehensive MRI Study of Over 2000 Subjects. *Frontiers in Neuroanatomy*, 9, 160. <https://doi.org/10.3389/fnana.2015.00160>

Jernigan, T. L., Brown, T. T., Hagler, D. J., Akshoomoff, N., Bartsch, H., Newman, E., ... Study, P. I. N. and G. (2016). The Pediatric Imaging, Neurocognition, and Genetics (PING) Data Repository. *NeuroImage*, 124(Pt B), 1149–1154.

Schumann, G., Loth, E., Banaschewski, T., Barbot, A., Barker, G., Büchel, C., ... Consortium, I. (2010). The IMAGEN study: reinforcement-related behaviour in normal brain function and psychopathology. *Molecular Psychiatry*, 15(12), 1128–1139. <https://doi.org/10.1038/mp.2010.4>

UCL

UNIVERSITÉ DE RENNES 1

EMPENN

Inria

Inserm
Institut national de la santé et de la recherche médicale

UMR IRISA

ICM
Institut de la Mémoire et de la Maladie Alzheimer

CPRS