



HAL
open science

Helicase-like transcription factor expression is associated with a poor prognosis in Non-Small-Cell Lung Cancer (NSCLC)

Ludovic Dhont, Melania Pintilie, Ethan Kaufman, Roya Navab, Shirley Tam, Arsène Burny, Frances Shepherd, Alexandra Belayew, Ming-Sound Tsao, Céline Mascaux

► **To cite this version:**

Ludovic Dhont, Melania Pintilie, Ethan Kaufman, Roya Navab, Shirley Tam, et al.. Helicase-like transcription factor expression is associated with a poor prognosis in Non-Small-Cell Lung Cancer (NSCLC). *BMC Cancer*, 2018, 18 (1), pp.429. 10.1186/s12885-018-4215-y . inserm-01857815

HAL Id: inserm-01857815

<https://inserm.hal.science/inserm-01857815>

Submitted on 17 Aug 2018

HAL is a multi-disciplinary open access archive for the deposit and dissemination of scientific research documents, whether they are published or not. The documents may come from teaching and research institutions in France or abroad, or from public or private research centers.

L'archive ouverte pluridisciplinaire **HAL**, est destinée au dépôt et à la diffusion de documents scientifiques de niveau recherche, publiés ou non, émanant des établissements d'enseignement et de recherche français ou étrangers, des laboratoires publics ou privés.

RESEARCH ARTICLE

Open Access



Helicase-like transcription factor expression is associated with a poor prognosis in Non-Small-Cell Lung Cancer (NSCLC)

Ludovic Dhont^{1,2,3}, Melania Pintilie⁴, Ethan Kaufman², Roya Navab², Shirley Tam², Arsène Burny⁵, Frances Shepherd⁶, Alexandra Belayew¹, Ming-Sound Tsao^{2,6,7} and Céline Mascaux^{8,9*}

Abstract

Background: The relapse rate in early stage non-small cell lung cancer (NSCLC) after surgical resection is high. Prognostic biomarkers may help identify patients who may benefit from additional therapy. The Helicase-like Transcription Factor (HLTF) is a tumor suppressor, altered in cancer either by gene hypermethylation or mRNA alternative splicing. This study assessed the expression and the clinical relevance of wild-type (WT) and variant forms of *HLTF* RNAs in NSCLC.

Methods: We analyzed online databases (TCGA, COSMIC) for *HLTF* alterations in NSCLC and assessed WT and spliced *HLTF* mRNAs expression by RT-ddPCR in 39 lung cancer cell lines and 171 patients with resected stage I-II NSCLC.

Results: In silico analyses identified *HLTF* gene alterations more frequently in lung squamous cell carcinoma than in adenocarcinoma. In cell lines and in patients, WT and I21R *HLTF* mRNAs were detected, but the latter at lower level. The subgroup of 25 patients presenting a combined low WT *HLTF* expression and a high I21R *HLTF* expression had a significantly worse disease-free survival than the other 146 patients in univariate (HR 1.96, CI 1.17–3.30; $p = 0.011$) and multivariate analyses (HR 1.98, CI 1.15–3.40; $p = 0.014$).

Conclusion: A low WT *HLTF* expression with a high I21R *HLTF* expression is associated with a poor DFS.

Keywords: Non-small cell lung cancer, HLTF, Prognosis, Alternative splicing

Background

Lung cancer is responsible for the highest cancer-associated mortality rate worldwide. Only 16% of patients affected with Non-small cell lung cancer (NSCLC), which is the most common subtype, are alive 5 years after diagnosis, and this number has hardly improved over several decades [1]. One reason for this poor prognosis is that only 15% of lung cancers are diagnosed at an early stage. Till recently the standard of care for NSCLC at stages I-IIIa was surgery, resulting in patient survival rates of 23% in stage IIIa, 33% in stage

IIB, and up to 89% in stages IA [2]. Adjuvant chemotherapy after radical resection of localized NSCLC improves survival at 5 years by about 5% [3]. However, there is still a relatively high risk of relapse, and up to 40% of all stage IB and 60% of stage II patients die from their disease despite receiving adjuvant chemotherapy [4]. The integration of prognostic and predictive biomarkers has the potential of identifying patients who are at a low-risk of relapse following surgery and do not need further therapy, and conversely, patients who are at a high risk of relapse and who potentially may derive the greatest benefit from adjuvant treatment, including chemotherapy or personalized treatment based on individual tumor profiling. Therefore, an effort to identify more robust prognostic and predictive biomarkers is needed [5].

The Helicase-like Transcription Factor (HLTF) is a member of the yeast mating SWItch/Sucrose Non Fermenting (SWI/SNF) family of proteins involved in

* Correspondence: celinejmascaux@gmail.com

⁸Department of Multidisciplinary Oncology and Therapeutic Innovations, Assistance Publique des Hôpitaux de Marseille (AP-HM), Aix-Marseille University, Chemin des Bourrely, 13195 Marseille, Cedex 20, France

⁹Centre de Recherche en Cancérologie de Marseille (CRCM, Cancer Research Center of Marseille), Inserm UMR1068, CNRS UMR7258 and Aix-Marseille University UM105, Marseille, France

Full list of author information is available at the end of the article



chromatin remodeling. Several studies demonstrated its function in gene transcription [6], cell cycle [7], DNA repair [8, 9], and genome stability maintenance [10], supporting its tumor suppressor role. In cancer, two different alterations in *HLTF* expression were reported: (i) an epigenetic silencing by hypermethylation of its promoter and (ii) an alternative splicing of its mRNA, leading to the production of several shorter forms of the protein lacking DNA repair domains. The hypermethylation of *HLTF* promoter was first identified in colon cancer [11] and was reported in other types of cancers, including gastric cancers [12–16]. It was shown in HeLa cells that *HLTF* mRNA was alternatively spliced in the exons 19 to 22 region, resulting in the expression of shorter truncated protein forms. The distinctive character of the *HLTF* spliced mRNA variants (I21R) is that they contain the intron 21 between exons 21 and 22. To date, the expression of *HLTF* protein forms was reported in head and neck, cervix and thyroid [17–20] cancers and associated with a poor prognosis [16].

In lung cancer, one study assessed the hypermethylation of *HLTF* in a cohort of 54 patients with NSCLC [21]. Promoter hypermethylation was found in 21 patients (39.6%), including 9/20 squamous cell carcinoma (SCC) and 12/33 adenocarcinoma (ADC). Patients whose tumors harboured *HLTF* hypermethylation had shorter survival, in comparison with patients whose tumors had a hypomethylated *HLTF* promoter (log-rank, $p = 0.035$). So far, to our knowledge, there are no published data about the expression of *HLTF* (wild-type and its truncated forms) in lung cancer.

The purpose of this study is to assess the expression of wild-type (WT) and spliced variants (I21R) of *HLTF* mRNAs in NSCLC and evaluate their clinical relevance. We analyzed publicly available databases for *HLTF* in lung cancer and assessed its expression in NSCLC cell lines and in a clinically annotated cohort of 171 patients with resected stage I-II NSCLC.

Methods

In silico analyses

Available genomic profiling data (mutation, copy number, DNA methylation [correlation only], and mRNA expression) for *HLTF* were downloaded from cBioPortal, an online portal for accessing data from The Cancer Genome Atlas (TCGA) project and other cancer genome profiling initiatives (<http://www.cbioportal.org/public-portal>). Additional cancer genome profiling data were obtained from the Catalogue of Somatic Mutations in Cancer (<http://cancer.sanger.ac.uk/cosmic>; [22]).

To obtain gene expression estimates for individual mRNA forms, paired-end RNAseq raw read data from the TCGA project were downloaded from the Cancer Genomics Hub (<https://cghub.ucsc.edu/>). In brief, reads

were mapped to the latest human reference assembly, hg19, using TopHat, a splice-aware short-read aligner (<http://ccb.jhu.edu/software/tophat>). Alignment output was then supplied to Cufflinks (<http://cufflinks.cbcb.umd.edu/>), which was run in the reference-guided mode to quantify the abundance of known transcripts as well as predict and estimate expression of novel isoforms. Pre- and post-alignment quality control was performed with FastQC (<http://www.bioinformatics.babraham.ac.uk/projects/fastqc/>) and RSeQC (<http://rseqc.sourceforge.net/>), respectively.

Patient characteristics

A total of 171 patients with resected stage I-II NSCLC collected at University Health Network (Toronto, Canada) were included in this study. These patients had surgery between 1996 and 2005. The length of follow-up: median 5.4 years, range 0.1–12 years. As these patients all underwent surgery before 2005, none of them received adjuvant chemotherapy as it did only become standard after 2005. The clinical and demographic characteristics of the patient cohort are listed in Table 2.

Cell lines and cell culture

NSCLC cell lines were purchased from the American Type Cell Collection (ATCC, <http://www.atcc.org>), and cultured according to ATCC recommendation. Among these, there were 33 of the adenocarcinoma (ADC) subtype (H1693, H2122, H2228, H2279, H1573, H1395, H522, H1792, H838, H1819, H4011, H2291, H2073, H1568, H920, H1993, H4006, HCC827, H3255, H23, H4019, H2126, H1437, H1944, H2009, H2405, H1373, H1355, H1975, HCC2935, A549, H650, H1650), two large cell carcinoma (H661, H4017), one mixed adenocarcinoma (H647) and two of undefined histology (DFC1032, DFC1024). MGH7 cells (squamous cell carcinoma, SCC) were cultured as described [23].

mRNA expression

Total RNA was extracted from cell lines with RNeasy Mini Kit (QIAGEN) according to the manufacturer's instructions. RNA purity and concentration were assessed with Nanodrop (Thermo Scientific). Total RNA (input 150 ng) extracted from cell lines and patient tumours were reverse transcribed into cDNA (SuperScript III, Invitrogen). Droplet Digital polymerase chain reaction (ddPCR) was performed based on the manufacturer's recommendations (QX200, Bio-Rad). ddPCR is a highly sensitive qPCR due to a step of sample fractioning (limiting dilutions) by generation of droplets (water:oil emulsion). It allows retrieving an absolute count of RNA copies for each sample, and is particularly indicated for low-expressed targets. Each ddPCR was performed with 22.5 ng cDNA in triplicates. Reaction conditions were as

follow: ddPCR cycle was set up at 95 °C for 5 min, 40 cycles of [30 s at 95 °C and 1 min at 58 °C], 5 min at 4 °C, and finally 5 min at 90 °C. Results were analyzed with QuantaSoft (Bio-Rad), and the cut-off to define positive and negative droplets was set up at 10,000 arbitrary units of fluorescence amplitude. This signal is then used in the calculation of *HLTF* copy number by a Poisson regression (QuantaSoft, Bio-Rad).

Primers to detect either WT *HLTF* mRNA (F: 5'-GTTCAAAGATTAATGCGCT-3' and R: 5'-AAAGACAGGAATGTTGTAAGTGA-3') or *HLTF* mRNA variants I21R (F: 5'-TCCAGTTTCAAAGGTAAAGTACTC-3' and R: 5'-GCCAGTGGTCAACAACAGAA-3') by ddPCR were designed with Primer3 and purchased from Eurogentec. Primers were tested for nonspecific amplicons and primer dimers by visualizing PCR products on 1% agarose gels and droplet distribution profile (QuantaSoft, Bio-Rad).

Statistical analyses

Expression levels of different variants of *HLTF* were measured in triplicates. The reliability was assessed by calculating the intra-class correlation coefficient (ICC) based on the within and between variances estimated using the variance component analysis. For the outcome analysis, the three replicates were averaged for each sample. Two outcome variables were assessed: overall survival (OS) and disease-free survival (DFS). Both were measured from surgery date. For OS, the time was calculated up to the date of death or last follow-up with death of any cause as an event; for DFS, the time was calculated up to the date of relapse, death or last follow-up with death or relapse as events. There were 71 deaths (number of events for OS) and 81 events for DFS in the cohort. The averages of the three replicates of WT and I21R *HLTF* expressions were tested for their associations with OS and DFS using the Cox proportional hazards regression. Both variants of *HLTF* were also dichotomized at their respective medians and were tested as categorical variables using the log-rank test. The percentages for OS and DFS for the high and low values of each of these covariates were calculated using the Kaplan-Meier method. A composite covariate was created by combining WT and I21R *HLTF* expression levels and a data-driven covariate was defined as "Low WT *HLTF* and High I21R *HLTF*" vs. the rest. This new covariate was also tested for its association with OS and DFS by employing the log-rank test. These covariates were tested for their association with outcome, adjusting the model for age (≤ 65 , > 65), sex, stage (I vs. II), and histology (ADC vs. the rest) using Cox regression. All *p*-values were based on the Wald test. *HLTF* expressions (continuous) were also tested for their associations with the clinical factors (age, sex, histology, and stage) using

the Mann-Whitney test. A cut-off of $p \leq 0.05$ was used for statistical significance.

Results

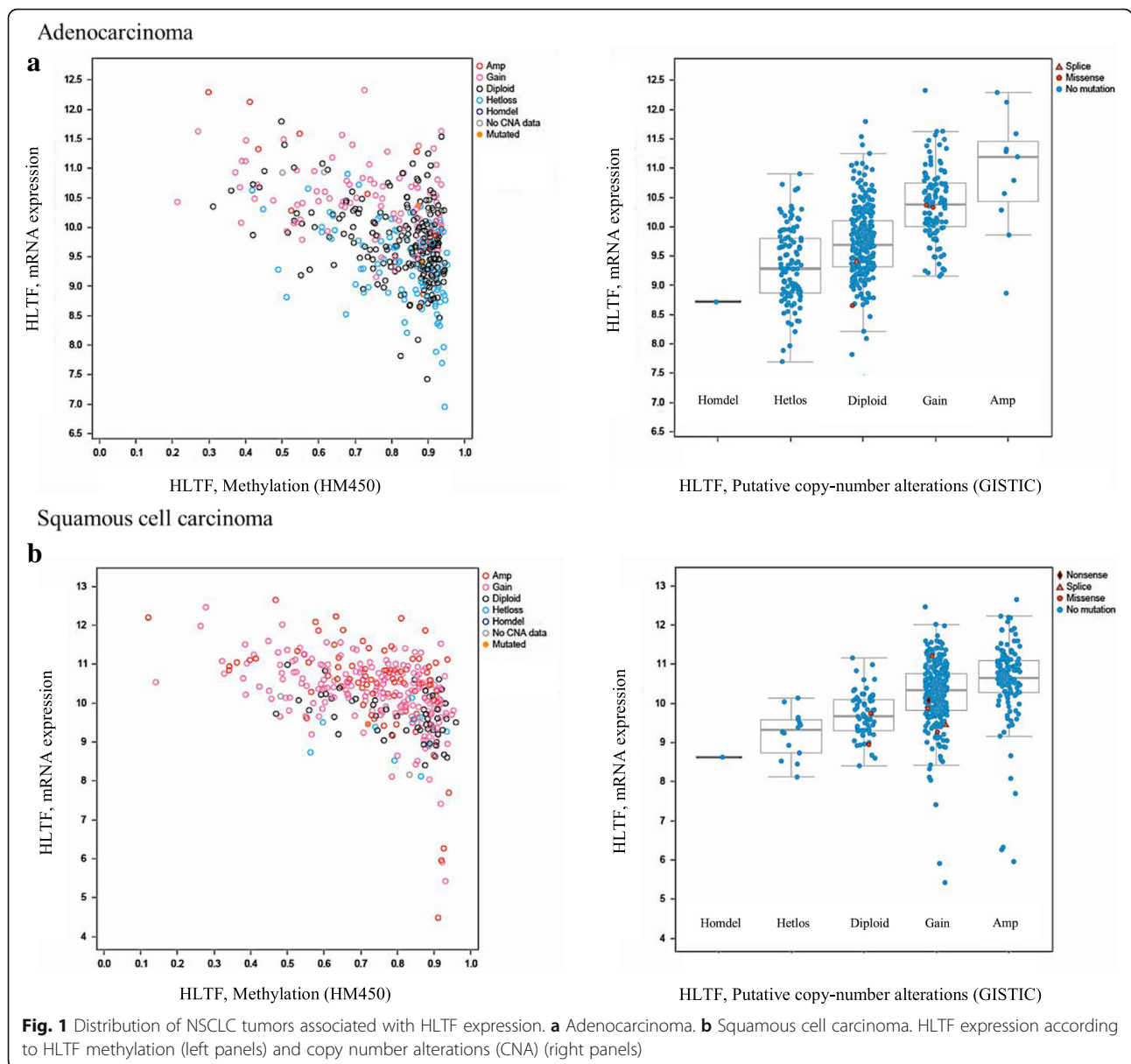
In silico analysis of *HLTF* alterations in NSCLC

We collected available online data for *HLTF* alterations in NSCLC from TCGA (Lung ADC and SCC, TCGA Provisional 2015/02/04) and COSMIC, focusing on mutations, copy number alterations (CNAs), and methylation data. We analyzed these data in association with *HLTF* expression. The type and the frequency of the different *HLTF* alterations in ADC and SCC are reported in Table 1. When all types of molecular alteration were considered, *HLTF* was more frequently altered in SCC (438/504 cases, 83%) than ADC (266/578 cases, 46.0%; $p < 0.0001$). While a high expression of *HLTF* was more frequently reported in SCC than in ADC (28.6% vs 7.5%, $p < 0.0001$), a negative correlation between *HLTF* expression and its methylation status was found in both SCC (Pearson: -0.475 and Spearman: -0.484 ; Fig. 1) and ADC (Pearson: -0.473 and Spearman: -0.420 ; Fig. 1). *HLTF* copy number gain was more frequent in SCC (57% vs 23.3%, $p < 0.0001$) as well as high amplifications (26.1% vs 2.1%, $p < 0.0001$). Conversely, loss of heterozygosity was more frequent in ADC than in SCC (22.3% vs 2.9%, respectively, $p < 0.0001$), along with diploidy (52% vs 13.5%, respectively, $p < 0.0001$). *HLTF* mutation is a rare event both in ADC and SCC, 2.2 and 1.5%, respectively (Table 1). The majority of the 13 mutations (12 missense and 1 splice site mutation) reported in ADC

Table 1 *HLTF* alterations in lung adenocarcinoma and squamous cell carcinoma

	Adenocarcinoma (n = 578) Number of cases, n (%)	Squamous cell carcinoma (n = 504) Number of cases, n (%)	<i>P</i> -value (Fisher test)
Mutation	13 (2.2%)	8 (1.5%)	0.5110
Copy number alterations			
Homozygous deletion	1 (0.1%)	1 (0.2%)	1.00
Heterozygosity loss	115 (22.3%)	15 (2.9%)	< 0.0001
Diploid	268 (52.0%)	68 (13.5%)	< 0.0001
Gain	120 (23.3%)	286 (57.0%)	< 0.0001
High level of amplification	11 (2.1%)	131 (26.1%)	< 0.0001
No data	63	3	
mRNA expression level			
High expression	43 (7.5%)	141 (28.6%)	< 0.0001
Low expression	0 (0.0%)	6 (1.2%)	0.0101
Total number of altered cases	266 (46.0%)	438 (83.0%)	< 0.0001

Data collected from TCGA database



and 8 mutations (6 missense, 1 splice site and 1 non-sense mutations) in SCC are found in regions encoding functional domains involved in DNA binding (HIRAN domain), Sp1/Sp3 interaction (carboxyl-terminal domain), and DNA repair (SNF2_N/helicase-ATPase and RING finger domains) (Fig. 2).

In vitro screening of HLTf mRNA expression in a panel of NSCLC cell lines

We assessed HLTf mRNA expression in 39 NSCLC cell lines. Measurements for WT and I21R HLTf were considered reliable based on ICC values (0.878 and 0.933, respectively). Overall, the level of WT HLTf expression was significantly higher than the level of I21R HLTf

expression (Fig. 3) (median 71.5 vs. 18.3 respectively, Wilcoxon signed-rank test, $p = 4.5 \times 10^{-7}$).

Assessment of HLTf expression in a cohort of 171 patients with NSCLC

HLTf expression was assessed by RT-ddPCR in 171 tumours from patients with surgically resected stage I-II NSCLC. Patient data are summarized in Table 2. Measurements for WT and I21R HLTf were considered reliable based on ICC values (0.984 and 0.846, respectively). As in NSCLC cell lines, the level of WT HLTf expression was significantly higher than the level of I21R HLTf expression in tumours of patients with NSCLC (Fig. 3) when considering all patients (median 20.6 vs. 2.2 respectively, Wilcoxon signed-rank test, $p = 2.2 \times 10^{-16}$).

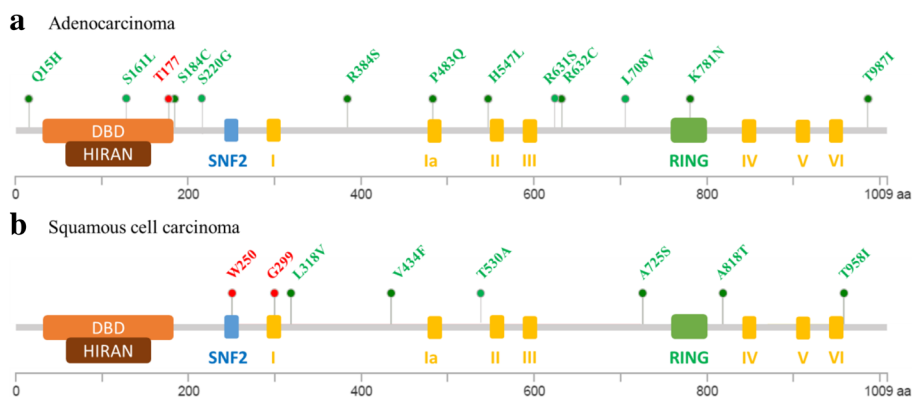


Fig. 2 HLTf mutations in NSCLC. **a.** Lung adenocarcinoma. **b.** Lung squamous cell carcinoma. Mutation data were retrieved from TCGA and COSMIC databases. HLTf protein is depicted as a grey line with its functional domains: DNA binding domain (DBD, orange box), HIRAN (brown box), SNF2 (blue box), Helicase/ATPase I-III (yellow boxes), zinc finger RING (green box). Under the protein is a scale showing the amino-acid size. Mutation are depicted by colored dots (missense: green; spliced or stop mutation: red) with their position and the residue change

There was no difference between SCC and ADC for WT and I21R *HLTF* expressions ($p = 0.09$ and 0.17 , respectively). Overall, the level of *HLTF* expression was lower in tumours from patients than in cell lines (WT *HLTF*: 20.6 vs. 71.5, $p = 9.3 \times 10^{-11}$ and I21R *HLTF*: 2.2 vs. 18.3, $p = 2.8 \times 10^{-12}$, Wilcoxon rank-sum test; Fig. 3).

HLTF and clinical characteristics

WT and I21R *HLTF* expressions were first tested for their association with patient clinical characteristics (age, sex, histology, and stage). There was no association with these characteristics and *HLTF* expression (Table 2).

Second, we considered a composite covariate combining WT and I21R *HLTF* expressions dichotomized at their median levels. Four groups were built accordingly. There was no association with patient clinical characteristics (Table 3).

HLTF expression and outcome

A univariate analysis (Cox proportional hazard regression model and log-rank test) was first performed to assess the association between WT and I21R *HLTF* expression levels, and OS and DFS. The mRNA expression measures were sequentially considered as continuous and as dichotomous variables. There was no

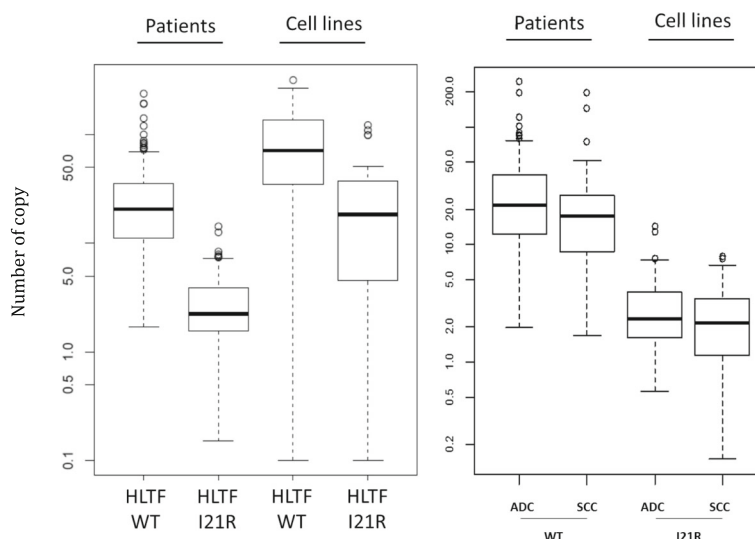


Fig. 3 Distribution of WT and I21R *HLTF* expressions (number of copy) in lung adenocarcinoma (ADC) (left panel) and squamous cell carcinoma (SCC) (right panel) patients and cell lines. RNA from cell lines and tumors was extracted and reverse transcribed. A ddPCR was performed to detect WT and I21R *HLTF* expression by using specific primer sets. The high sensitivity of ddPCR provides an absolute count of RNA copies for each sample, displayed in Y-axis

Table 2 Association of WT *HLTF* and I21R *HLTF* expressions with patient clinical characteristics

Clinical factor	Categories	n	Summary WT <i>HLTF</i> Median (range)	p-value	Summary I21R <i>HLTF</i> Median (range)	p-value
Age	Age < 65	57	20.7 (2–193)	0.63	2.1 (0.7–12.7)	0.54
	Age ≥ 65	114	20.5 (1.7–240)		2.3 (0.2–14.3)	
Sex	F	78	20.4 (2–121)	0.84	2.4 (0.2–8.4)	0.71
	M	93	20.6 (1.7–240)		2.2 (0.6–14.3)	
Stage	I	121	19.6 (1.7–240)	0.46	2.1 (0.2–14.3)	0.91
	II	50	23.8 (3.5–195)		2.3 (0.6–7.6)	
Histology	ADC	122	21.5 (2–240)	0.061	2.3 (0.6–14.3)	0.19
	OTH	49	17.5 (1.7–195)		2.1 (0.2–8.4)	
	ADC	122	21.5 (2–240)		2.3 (0.6–14.3)	
	SCC	42	17.5 (1.7–195)		2.1 (0.2–7.9)	

ADC Adenocarcinoma, OTH Other histology types, SCC Squamous cell carcinoma. The Mann-Whitney test was used. A cut-off of $p \leq 0.05$ was used for statistical significance

significant association of each variable with OS and DFS (Table 4).

The association of the combined covariates of WT and I21R *HLTF* expression with OS and DFS were analyzed by the log-rank test. When considering the four groups, the « Low WT *HLTF*-High I21R *HLTF* » group showed a trend for a poorer DFS, but did not reach statistical significance (DFS at 5 years = 25%, log-rank $p = 0.067$), compared with the three other groups. We thus compared this group (Low WT *HLTF*-High I21R *HLTF*) to the three other groups combined. There was no statistical difference in OS (HR 1.26, CI 0.67–2.34; $p = 0.48$), but the DFS was significantly worse in this group (HR 1.96, CI 1.17–3.30; $p = 0.011$) (Table 4 and Fig. 4d).

A multivariate analysis (Cox proportional hazard regression model) was performed to include age, sex, stage, histology, and *HLTF* expression; WT alone (model 1), I21R alone (model 2) and the 2 composite groups (model 3) were considered (Table 5). *HLTF* expression (for each model) was not associated with OS. The

expressions of WT (model 1) and I21R *HLTF* (model 2) were not associated with DFS. However, the shorter DFS of the group « Low WT *HLTF*-High I21R *HLTF* » (model 3) as compared with the other groups remained significant (HR 1.98, CI 1.15–3.4, $p = 0.014$; Table 5).

Discussion

The purpose of this study was to assess the expression of WT and variant forms of *HLTF* mRNAs in NSCLC and evaluate their clinical relevance. Our hypothesis was that the expression of *HLTF* mRNA variant I21R has a poor prognosis on patients with NSCLC. In head and neck, cervix and thyroid cancers, the expression of *HLTF* truncated protein has been associated with poor outcome [16–20]. The present study showed that in a cohort of 171 patients, the combination of low expression of WT *HLTF* transcript and high expression of I21R *HLTF* transcript was associated with poor prognosis in early stage NSCLC.

Table 3 Association of the composite covariate combining WT *HLTF* and I21R *HLTF* expression levels (n, %) with patient clinical characteristics

Clinical factor	Categories	n	WT ≤ 20.6 Mut < =2.23	WT > 20.6 Mut > 2.23	WT > 20.6 Mut ≤ =2.23	WT > 20.6 Mut > 2.23	p-value
Age	Age < 65	57	20 (32.8%)	8 (32%)	10 (45.5%)	19 (30.2%)	0.62
	Age ≥ 65	114	41 (67.2%)	17 (68%)	12 (54.5%)	44 (69.8%)	
Sex	F	78	26 (42.6%)	13 (52%)	11 (50%)	28 (44.4%)	0.85
	M	93	35 (57.4%)	12 (48%)	11 (50%)	35 (55.6%)	
Stage	I	121	46 (75.4%)	17 (68%)	15 (68.2%)	43 (68.3%)	0.81
	II	50	15 (24.6%)	8 (32%)	7 (31.8%)	20 (31.7%)	
Histology	ADC	122	40 (65.6%)	16 (64%)	17 (77.3%)	49 (77.8%)	0.78
	OTH	49	21 (34.4%)	9 (36%)	5 (22.7%)	14 (22.2%)	
	ADC	122	20 (32.8%)	8 (32%)	10 (45.5%)	19 (30.2%)	
	SCC	42	41 (67.2%)	17 (68%)	12 (54.5%)	44 (69.8%)	

ADC Adenocarcinoma, OTH Other histology types, SCC Squamous cell carcinoma. The Mann-Whitney test was used. A cut-off of $p \leq 0.05$ was used for statistical significance

Table 4 Univariate analyses of the association of HLTF expression with overall survival and disease-free survival

Outcome		Overall survival (OS)				Disease-free survival (DFS)				
Category	n	Estimate at 5 years	Logrank p-value	HR (95% CI) ^a	Wald p-value	Estimate at 5 years	Logrank p-value	HR (95% CI) ^a	Wald p-value	
WT	<=20.6	86	61%	0.63	1.03 (0.97–1.1)	0.34	48%	0.14	1.01 (0.95–1.08)	0.72
	> 20.6	85	64%				61%			
I21R	<=2.23	83	63%	0.65	1.03 (0.92–1.15)	0.61	58%	0.73	1.02 (0.93–1.13)	0.64
	> 2.23	88	61%				49%			
Composite covariable	Wt > 20.6 or Mut <=2.23	146	65%	0.47	1.26 (0.67–2.34)	0.48	59%	0.0096	1.96 (1.17–3.3)	0.011
	Wt <=20.6 and Mut > 2.23	25	50%				25%			

Cox proportional hazard regression model and log-rank test were used. A cut-off of $p \leq 0.05$ was used for statistical significance

^aNote: HRs for WT HLTF represent the increase of the hazard for 10 units increase in the WT HLTF

Overall, in silico analysis showed that *HLTF* alterations, including gene amplifications, high expression, and methylation occurred more frequently in SCC than in ADC. Mutations in *HLTF* were rare in both ADC and SCC; however, the mutations observed in ADC were different from those found in SCC. In ADC, mutations occur in DNA binding domain and DNA repair domains (Fig. 2), which might alter HLTF transcriptional and

DNA repair abilities. Conversely, in SCC, mutations did not occur in functional domains but there are 2 non-sense mutations leading to the expression of a shorter protein containing only the DBD. This suggests that these shorter proteins would only have transcriptional activity. Further investigations are required to assess the functional consequence and potential clinical impact of these mutations in cancer. Copy number alterations

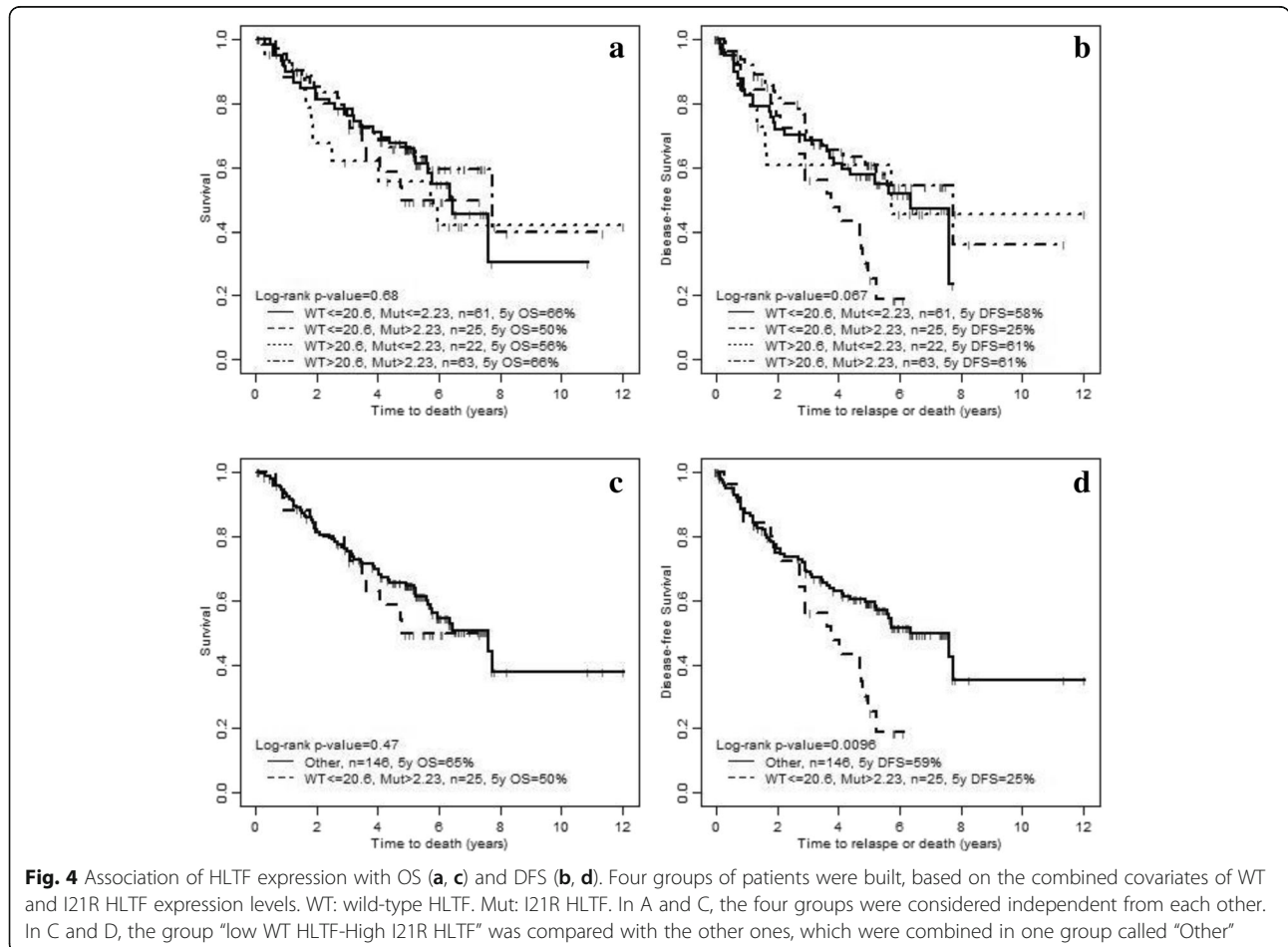


Table 5 Multivariate analyses of the association of *HLTF* expression with survival and disease-free survival

Models ^a	Overall survival (OS)			Disease-free survival (DFS)		
	HR	95% CI	<i>p</i> -value	HR	95% CI	<i>p</i> -value
Model 1: adjusted effect of WT <i>HLTF</i> (for 10 units)	1.02	0.96–1.08	0.58	1	0.94–1.06	0.94
Model 2: adjusted effect of I21R <i>HLTF</i>	1.01	0.9–1.13	0.84	1	0.9–1.11	0.97
Model 3: adjusted effect of <i>HLTF</i> WT < =20.6 & I21R > 2.23 vs. the rest	1.21	0.64–2.28	0.56	1.98	1.15–3.4	0.014

Cox proportional hazard regression model was used. A cut-off of $p \leq 0.05$ was used for statistical significance

^aAll models are adjusted for age, sex, stage and histology

were also found to be different between ADC and SCC; high amplifications were rare in ADC, but 83% of SCC have either a gain (57%) or an amplification (26%) of *HLTF*. These observations are consistent with the fact that *HLTF* is located on chromosome 3q, which is frequently amplified in SCC. We also analyzed the association of *HLTF* expression with its methylation status in both NSCLC types. In both ADC and SCC, there was a negative correlation between methylation and *HLTF* expression, but a high expression was more frequently seen in SCC, which might be related to the higher frequency of gene copy number. Intriguingly, we did not notice any difference in *HLTF* expression levels (WT and I21R) between ADC and SCC by RT-ddPCR. This discrepancy may be possibly explained by the fact that we assessed *HLTF* mRNA variants separately, while data reported in cBioportal considered only WT *HLTF* expression without distinguishing the variants.

In the available online data, only WT *HLTF* expression was assessed. To our knowledge, to date the expression of the *HLTF* spliced variants with intron 21 retention (I21R) has not been assessed. Using the RT-ddPCR with specific primers that we constructed, we were able to evaluate the expression of WT *HLTF* mRNA and its spliced variants I21R. Spliced variants I21R lead to the expression of shorter protein forms, which are thought to disturb WT *HLTF* function and act as oncogene proteins [16]. Studies in head and neck, cervix and thyroid cancers showed that the expression of such shorter proteins was associated with poor prognosis [17–20]. They replace WT *HLTF* progressively and accumulate along the carcinogenic process, most likely due to their higher stability compared with WT *HLTF*. It was reported that the I21R transcripts have a lower abundance than the WT *HLTF* transcript in mouse heart and brain transcriptomes [7, 24]. We analyzed RNA-seq data from TCGA for the presence of the intron 21 sequence and found that its expression was a rare event in NSCLC. In both the NSCLC cell lines and the 171 resected NSCLC from patients, WT *HLTF* levels were significantly higher than I21R *HLTF*.

Castro et al. studied the methylation for several genes including *HLTF* in NSCLC and reported that patients

with *HLTF* methylation have shorter survival [21]; this study represents the only study of *HLTF* in lung cancer. They reported *HLTF* methylation frequency for NSCLC and did not observe any significant difference for *HLTF* methylation between ADC and SCC (12/33 vs. 9/20, respectively; $p = 0.57$, Fisher exact test). cBioportal does not provide gene methylation frequency but only correlations with the expression of a given gene. In both ADC and SCC, we observed a negative correlation between *HLTF* expression and methylation. Interestingly, *HLTF* expression was affected more by the variation in *HLTF* copy number than its promoter methylation status.

Conclusion

So far to our knowledge, our study is the first to assess the clinical impact of WT and variant forms of *HLTF* expression in patients with NSCLC. TCGA in silico analysis of *HLTF* alterations including mutations, amplification, and mRNA expression modifications were more frequent in SCC than in ADC. In NSCLC cell lines and patient samples, both the expressions of WT and spliced I21R *HLTF* mRNAs were detected, but with the latter at lower levels. In a cohort of 171 patients with resected stage I-II NSCLC, the combination of a low WT *HLTF* expression with a high I21R *HLTF* expression was associated with shorter DFS both in univariate and multivariate analyses. Surgically resected early stage NSCLC are very heterogeneous and no prognostic factor has been clinically validated for the risk of relapse. Very likely, a panel of several biomarkers will be necessary to predict tumour with poor prognostic; that would therefore require more intensive follow-up and treatment. If validated in independent cohorts, the combination of low WT and high I21R *HLTF* might belong to this biomarker panel for the prognostic of surgically resected NSCLC. As detailed in a review article we published recently [16], the *HLTF* gene could be involved in various ways during the stages of tumour initiation and progression, by its ability to alternatively express proteins of different sizes with distinct functions ranging from tumour suppressor

to oncoprotein. The involvement of alternative RNA splicing in producing tumour promoting proteins is a process that does not require inactivating mutation of a tumour suppressor gene and might be an underestimated carcinogenic mechanism. Further studies should precisely investigate the functions of these HLTf protein forms and their role in cancer development.

Abbreviations

ADC: Adenocarcinoma; CNA: Copy number alteration; DFS: Disease-free survival; HLTf: Helicase-like transcription factor; HR: Hazard ratio; ICC: Intraclass coefficient; NSCLC: Non-small cell lung cancer; OS: Overall survival; RT-ddPCR: Reverse transcription-droplet digital PCR; SCC: Squamous cell carcinoma; WT: Wild-type

Acknowledgements

We acknowledge Dr. Claude Lachance for his help in ddPCR design.

Funding

This work was supported by funds from F. R. S.-FNRS (doctoral research fellowship) (L.D.), Télévie (A.I.B., C.M.), FRMH (Fonds pour la Recherche Médicale dans le Hainaut, Belgium) (L.D.) and research grant from Canadian Cancer Society (grant #701595, MST). C.M. was supported by research funds from Boehringer-Ingelheim Canada. The funding bodies had no role in the design of the study and collection, analysis and interpretation of the data.

Availability of data and materials

The ddPCR dataset used and analyzed during the current study is available from the corresponding author on reasonable request. In silico analyses were performed with publicly available data from TCGA/cBioportal.

Authors' contributions

LD and CM designed the study and wrote the manuscript. LD performed RNA extractions with RN and ST, ddPCR, and in silico analyses with EK. MP performed statistical analyses. ArB, FS, AlB, and MST supervised the study and drafted the manuscript. All authors read and approved the final manuscript.

Ethics approval and consent to participate

The UHN Research Ethics Board approved the study protocol (08-0230-TE) and written informed consent was obtained from each patient. The use of widely available cell lines (ATCC, a publicly accessible repository) does not require ethics approval at our Institution. No permission was required to access the data used for this study.

Consent for publication

Not applicable.

Competing interests

The authors declare that they have no competing interests.

Publisher's Note

Springer Nature remains neutral with regard to jurisdictional claims in published maps and institutional affiliations.

Author details

¹Laboratory of Molecular Biology, Research Institute for Health Sciences and Technology, Université de Mons, Mons, Belgium. ²Princess Margaret Research Institute, Princess Margaret Cancer Centre, University Health Network, Toronto, Canada. ³Cellular and Molecular Epigenetics, Université de Liège-GIGA, Liège, Belgium. ⁴Biostatistics Department, University of Toronto, Toronto, Canada. ⁵Université Libre de Bruxelles (ULB), Bruxelles, Belgium. ⁶Division of Medical Oncology and Hematology, Princess Margaret Cancer Centre, University Health Network, Toronto, Canada. ⁷Laboratory of Medicine and Pathobiology, University of Toronto, Toronto, Canada. ⁸Department of Multidisciplinary Oncology and Therapeutic Innovations, Assistance Publique des Hôpitaux de Marseille (AP-HM), Aix-Marseille University, Chemin des Bourrely, 13195 Marseille, Cedex 20, France. ⁹Centre de Recherche en Cancérologie de Marseille (CRCM, Cancer Research Center of Marseille),

Inserm UMR1068, CNRS UMR7258 and Aix-Marseille University UM105, Marseille, France.

Received: 14 August 2016 Accepted: 12 March 2018

Published online: 16 April 2018

References

- Siegel R, Ma J, Zou Z, Jemal A. Cancer statistics, 2014. *CA Cancer J Clin*. 2014;64:9–29.
- Goldstraw P, Crowley J, Chansky K, Giroux DJ, Groome PA, Rami-Porta R, Postmus PE, Rusch V, Sobin L, International Association for the Study of Lung Cancer International Staging Committee, et al. The IASLC lung Cancer staging project: proposals for the revision of the TNM stage groupings in the forthcoming (seventh) edition of the TNM classification of malignant tumours. *J Thorac Oncol*. 2007;2:706–14.
- Pujol JL, Breton JL, Gervais R, Tanguy M-L, Quoix E, David P, Janicot H, Westeel V, Gamaroff S, Genève J, et al. Phase III double-blind, placebo-controlled study of thalidomide in extensive-disease small-cell lung cancer after response to chemotherapy: an intergroup study FNCLCC cleo04 IFCT 00-01. *J Clin Oncol*. 2007;25:3945–51.
- Tanaka F, Yoneda K. Adjuvant therapy following surgery in non-small cell lung cancer (NSCLC). *Surg Today*. 2016;46(1):25–37.
- Mascaux C, Feser WJ, Lewis MT, Barón AE, Coldren CD, Merrick DT, Kennedy TC, Eckelberger JI, Rozeboom LM, Franklin WA, et al. Endobronchial miRNAs as biomarkers in lung cancer chemoprevention. *Cancer Prev Res Phila*. 2013;6:100–8.
- Ding H, Benotmane AM, Suske G, Collen D, Belayew A. Functional interactions between Sp1 or Sp3 and the helicase-like transcription factor mediate basal expression from the human plasminogen activator inhibitor-1 gene. *J Biol Chem*. 1999;274:19573–80.
- Helmer RA, Martínez-Zaguilán R, Dertien JS, Fulford C, Foreman O, Peiris V, Chilton BS. Helicase-like transcription factor (hltf) regulates g2/m transition, wt1/gata4/hif-1a cardiac transcription networks, and collagen biogenesis. *PLoS One*. 2013;8:e80461.
- Blastyák A, Hajdú I, Unk I, Haracska L. Role of double-stranded DNA translocase activity of human HLTf in replication of damaged DNA. *Mol Cell Biol*. 2010;30:684–93.
- Motegi A, Liaw H-J, Lee K-Y, Roest HP, Maas A, Wu X, Moinova H, Markowitz SD, Ding H, Hoeijmakers JHJ, et al. Polyubiquitination of proliferating cell nuclear antigen by HLTf and SHPRH prevents genomic instability from stalled replication forks. *Proc Natl Acad Sci U S A*. 2008;105:12411–6.
- Sandhu S, Wu X, Nabi Z, Rastegar M, Kung S, Mai S, Ding H. Loss of HLTf function promotes intestinal carcinogenesis. *Mol Cancer*. 2012;11:18.
- Moinova HR, Chen W-D, Shen L, Smiraglia D, Olechnowicz J, Ravi L, Kasturi L, Myeroff L, Plass C, Parsons R, et al. HLTf gene silencing in human colon cancer. *Proc Natl Acad Sci U S A*. 2002;99:4562–7.
- Bai AHC, Tong JHM, To K-F, Chan MWY, Man EPS, Lo K-W, Lee JFY, Sung JYJ, Leung WK. Promoter hypermethylation of tumor-related genes in the progression of colorectal neoplasia. *Int J Cancer*. 2004;112:846–53.
- Hibi K, Nakao A. Highly-methylated colorectal cancers show poorly-differentiated phenotype. *Anticancer Res*. 2006;26:4263–6.
- Hibi K, Nakayama H, Kanyama Y, Kodera Y, Ito K, Akiyama S, Nakao A. Methylation pattern of HLTf gene in digestive tract cancers. *Int J Cancer*. 2003;104:433–6.
- Philipp AB, Stieber P, Nagel D, Neumann J, Spelsberg F, Jung A, Lamerz R, Herbst A, Kolligs FT. Prognostic role of methylated free circulating DNA in colorectal cancer. *Int J Cancer*. 2012;131:2308–19.
- Dhont L, Mascaux C, Belayew A. The helicase-like transcription factor (HLTf) in cancer: loss of function or oncomorphic conversion of a tumor suppressor? *Cell Mol Life Sci*. 2015;73:129–45.
- Capouillez A, Decaestecker C, Filleul O, Chevalier D, Coppée F, Leroy X, Belayew A, Saussez S. Helicase-like transcription factor exhibits increased expression and altered intracellular distribution during tumor progression in hypopharyngeal and laryngeal squamous cell carcinomas. *Virchows Arch*. 2008;453:491–9.
- Capouillez A, Debaue G, Decaestecker C, Filleul O, Chevalier D, Mortuaire G, Coppée F, Leroy X, Belayew A, Saussez S. The helicase-like transcription factor is a strong predictor of recurrence in hypopharyngeal but not in laryngeal squamous cell carcinomas. *Histopathology*. 2009;55:77–90.
- Capouillez A, Noël J-C, Arafa M, Arcolia V, Mouallif M, Guenin S, Delvenne P, Belayew A, Saussez S. Expression of the helicase-like transcription factor and

- its variants during carcinogenesis of the uterine cervix: implications for tumour progression. *Histopathology*. 2011;58:984–8.
20. Arcolia V, Paci P, Dhont L, Chantrain G, Sirtaine N, Decaestecker C, Rimmelink M, Belayew A, Saussez S. Helicase-like transcription factor: a new marker of well-differentiated thyroid cancers. *BMC Cancer*. 2014;14:492.
 21. Castro M, Grau L, Puerta P, Gimenez L, Venditti J, Quadrelli S, Sánchez-Carbayo M. Multiplexed methylation profiles of tumor suppressor genes and clinical outcome in lung cancer. *J Transl Med*. 2010;8:86.
 22. Forbes SA, Beare D, Gunasekaran P, Leung K, Bindal N, Boutselakis H, Ding M, Bamford S, Cole C, Ward S, et al. COSMIC: exploring the world's knowledge of somatic mutations in human cancer. *Nucleic Acids Res*. 2015;43:D805–11.
 23. Liu C, Tsao MS. In vitro and in vivo expressions of transforming growth factor- α and tyrosine kinase receptors in human non-small-cell lung carcinomas. *Am J Pathol*. 1993;142:1155–62.
 24. Helmer RA, Foreman O, Dertien JS, Panchoo M, Bhakta SM, Chilton BS. Role of helicase-like transcription factor (hltf) in the G2/m transition and apoptosis in brain. *PLoS One*. 2013;8:e66799.

Submit your next manuscript to BioMed Central and we will help you at every step:

- We accept pre-submission inquiries
- Our selector tool helps you to find the most relevant journal
- We provide round the clock customer support
- Convenient online submission
- Thorough peer review
- Inclusion in PubMed and all major indexing services
- Maximum visibility for your research

Submit your manuscript at
www.biomedcentral.com/submit

