



What is the interest of PMR after massive surgery for lower-limb sarcoma?

Alban Fouasson-Chailloux, Pierre Menu, Vincent Crenn, Marc Dauty

► To cite this version:

Alban Fouasson-Chailloux, Pierre Menu, Vincent Crenn, Marc Dauty. What is the interest of PMR after massive surgery for lower-limb sarcoma?. *Annals of Physical and Rehabilitation Medicine*, 2018, Epub ahead of print. 10.1016/j.rehab.2018.04.002 . inserm-01844111

HAL Id: inserm-01844111

<https://inserm.hal.science/inserm-01844111>

Submitted on 19 Jul 2018

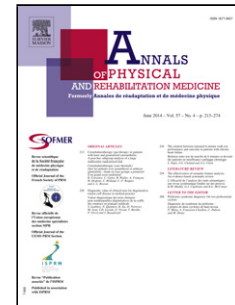
HAL is a multi-disciplinary open access archive for the deposit and dissemination of scientific research documents, whether they are published or not. The documents may come from teaching and research institutions in France or abroad, or from public or private research centers.

L'archive ouverte pluridisciplinaire **HAL**, est destinée au dépôt et à la diffusion de documents scientifiques de niveau recherche, publiés ou non, émanant des établissements d'enseignement et de recherche français ou étrangers, des laboratoires publics ou privés.

Accepted Manuscript

Title: What is the interest of PMR after massive surgery for lower-limb sarcoma?

Author: Alban Fouasson-Chailloux Pierre Menu Vincent
Crenn Marc Dauty



PII: S1877-0657(18)30057-5
DOI: <https://doi.org/doi:10.1016/j.rehab.2018.04.002>
Reference: REHAB 1176

To appear in:

Received date: 10-1-2018
Accepted date: 24-4-2018

Please cite this article as: Fouasson-Chailloux A, Menu P, Crenn V, Dauty M, What is the interest of PMR after massive surgery for lower-limb sarcoma?, *Annals of Physical and Rehabilitation Medicine* (2018), <https://doi.org/10.1016/j.rehab.2018.04.002>

This is a PDF file of an unedited manuscript that has been accepted for publication. As a service to our customers we are providing this early version of the manuscript. The manuscript will undergo copyediting, typesetting, and review of the resulting proof before it is published in its final form. Please note that during the production process errors may be discovered which could affect the content, and all legal disclaimers that apply to the journal pertain.

What is the interest of PMR after massive surgery for lower-limb sarcoma?

Alban FOUASSON-CHAILLOUX^{1,2}, Pierre MENU^{1,2}, Vincent CRENN³ and Marc DAUTY^{1,2}.

¹CHU Nantes, Médecine Physique et Réadaptation, PHU 10, Nantes, France

²Inserm, UMR 1229, RMeS, Regenerative Medicine and Skeleton, Université de Nantes, ONIRIS, Nantes F-44042, France

³CHU Nantes, CCOT, service d'orthopédie, 1, place Alexis-Ricordeau, 44093 Nantes cedex 1, France

Corresponding author: Fouasson-Chailloux A.

MPR Locomotrice et Respiratoire, CHU de Nantes, Hôpital St Jacques, 85 rue Saint Jacques, 44093 Nantes, Cedex 1, France

E-mail: alban.fouassonchailloux@chu-nantes.fr

Tel: +33 240 846 211

Key-words: bone tumor; joint prosthesis; rehabilitation; autonomy

Dear Editor. We report a series of 10 patients hospitalized in the locomotor physical medicine and rehabilitation (PMR) department of a university hospital after massive surgery for lower-limb sarcoma. For this work, we followed CARE case report guidelines. Sarcomas represent a rare type of cancer, about 0.2% of all cancers[1]. The most frequent location is the femur in 42% of cases, the pelvic location representing only 8% of cases [2]. Salvage of the concerned lower limb is always preferred when possible because it does not modify the risk of local recurrence or survival rate as compared with amputation [3,4]. Surgery is often responsible for substantial anatomical sacrifices due to the resection of bone, articular and contiguous soft tissues [5]. Pelvic sarcomas are responsible for more morbidity than are distal femoral tumors [6,7]. The consequences in terms of locomotor deficiencies are often at the origin of loss of autonomy. Early care in PMR is recommended to favour functional prognosis [8,9].

We evaluated 8 men and 2 women (mean [SD] age 53.6 years [18.4], range 20-76) who underwent PMR after surgery for lower-limb sarcoma from December 2011 to March 2016. The sarcoma characteristics are presented in Table 1. The initial surgical treatment had always been a tumor monobloc excision responsible for substantial anatomical sacrifices (Table 1, Figs. 1 and 2). Mean (SD) duration in the surgery department was 19.5 (12.5) days [range 8-46]. With pelvic sarcoma, an initial phase of immobilization with a hip brace was needed at the beginning of the PMR care. Also, one patient who had undergone distal femur surgery required a knee extension brace. The braces were made to measure and unarticulated. Immobilization with a hip brace was 45 days with hemi-pelvectomy type I-II, 30 days with type II and 15 days with type I. The braces were prescribed immediately after surgery. For patients who required bed rest periods (2 patients because of the initial fragility of the scar), PMR care consisted of one session of physiotherapy with joint mobilizations and muscular maintenance. After the potential bed rest period, patients performed 2 sessions a day, 5 days a week. The morning sessions were dedicated to neuro-functional analytic work adapted to deficiencies (range of motion gain, motor control of the hip or the knee); in the afternoon, a more global work was proposed with physiotherapists or occupational therapists and aimed at improving moving and walking abilities (transfers, weight bearing, balance and walking). A 1-hour wheelchair practice session per day was systematically proposed to permit wheelchair

autonomy. Sport practice was also proposed, initially in wheelchairs and then with weight-bearing exercises according to patients' abilities.

Six patients had isolated or associated complications (Table 1). The most frequent complication was infection on the operative site. In the 5 cases of infection, a new surgical procedure was performed. In these cases, the operated site was washed during, sometimes with the prosthetic replacement. Multiple antibiotic therapy was always prescribed. Two infections were associated with hip prosthesis luxation.

At the end of the hospitalization, 8 of 10 patients were able to go home: one had to live with his parents and one went to a care home for disabled adults (Table 2). Nevertheless, 3 patients needed help with showering and dressing at home, 2 patients needed the help of a housekeeper and 1 patient needed to have his meals delivered at home as well as help with showering and dressing and the help of a housekeeper because he had a hemi-pelvectomy with sacral fixation of the hip mega-prosthesis (Fig. 2). Eight of 10 patients were able to walk at the end of the therapy but had to use walking aids (Table 2); 4 had to use wheelchairs when going long distances. The 2 patients unable to walk had a pelvic sarcoma with major anatomical sacrifices. All patients were autonomous with their wheelchairs and the 7 youngest ones were able to step onto and off a sidewalk. Overall, the mean (SD) Barthel index measuring performance in activities of daily living was 22.5 (6) [range 20-40] at the beginning of the PMR care and 70.5 (13) [50-90] at the end. The mean (SD) stay in the PMR department was 85.8 (34) days [8-46] and the total mean (SD) stay at the hospital was 105.3 (39.6) days [49-184].

The challenges in the management of pelvic and femoral sarcomas are to increase the survival rate and to preserve function and quality of life [10]. PMR goals are restoration of the previous functional level and independence or to compensate independence loss to maintain quality of life [7]. These challenges and aims are usually studied with a follow-up of several months or years after treatment, so determining the contribution of early PMR care in the immediate aftermath of the surgical management is difficult.

PMR care presents several overall benefits for patients with cancers, particularly concerning the improvement of psychological health and pain management (neuropathic and/or nociceptive pain), which are unique to these patients [11]. Rehabilitation programs provided during PMR care could have a decisive impact on the ability to return to work [12]. Eight of our 10 patients were able to walk and return home after PMR despite major complications. Technical walking aids were always necessary, but for all patients, including the most dependent ones, wheelchairs always gave them autonomy of movement. In terms of function, surgery for pelvis and femoral sarcoma affects patients' autonomy owing to anatomical sacrifices. The worst results are at the pelvic level because of substantial anatomical sacrifices, which depend on tumor location and local invasion [7].

PMR care must be individualized because deficiencies secondary to the surgery vary widely among patients [8,9,13]. An articular immobilization by hip brace is usually necessary with a pelvic or proximal femur lesion because of the lack of hip articular stability [7]. The duration of wearing these splints is empirical; they are rarely maintained for more than 6 weeks and can be removed as soon as articular motor control is restored.

At the hip level, function usually decreases because of the loss of articular mobility and adductor weakness [10,14]. Modifications of the hip's center of rotation after megaprosthesis explain these deficiencies [15].

Numerous complications are associated with surgery, especially infection on the operative site, which usually requires a new surgical intervention. Many complications occur in the same patient [15]. Infection occurs in 17% to 60% of cases and may have several causes, such as surgery duration, blood loss, vacuity caused by the tumor resection and the use of neo-adjuvant treatments [15].

In terms of autonomy, for 8 of 10 patients, the Barthel index increased during the hospitalization to reach independency (score ≥ 60) after a mean stay of 85.8 days in the PMR department. For patients with pelvectomy, Beck et al. reported an increase in score from 10 before surgery to 40 at hospital discharge and then 90 after a 6-year follow-up [6]. Nevertheless, only 50% to 70% of the patients were independent and had a mean maximal walking distance of 45 m. The duration of hospital stay in PMR is explained by the period required to obtain functional independency permitting a return home or a move to an appropriate living place. The duration is also increased because of the complications. For ethical reasons due to patients' severe clinical condition and the potential risks after surgery, comparison with another comparable group was not possible because of different PMR management (external care). Because of the complexity and specificity of the management of sarcoma — short- and medium-term complications such as infections, persistent deficiencies and long-term oncological follow-up — specific network organizations with surgeons, oncologists and PMR physicians seem necessary [11]. This series of patients with pelvic or femoral bone sarcomas presented good functional results after PMR care, allowing for a return home for most, despite the severity of the tumor, and a 60% rate of serious complications. Sarcomas in pelvic and proximal femoral locations were responsible for more loss of autonomy than were those in distal femoral locations.

Figure legends

Figure 1. Total hip megaprosthesis for leiomyosarcoma grade III.

Figure 2. Hip megaprosthesis with acetabulum fixation on L5-S1 for chondrosarcoma grade 1.

REFERENCES

- [1] Franchi A. Epidemiology and classification of bone tumors. Clin Cases Miner Bone Metab 2012;9:92–5.
- [2] Ottaviani G, Jaffe N. The epidemiology of osteosarcoma. Cancer Treat Res 2009;152:3–13.
- [3] Renard AJ, Veth RP, Schreuder HW, van Loon CJ, Koops HS, van Horn JR. Function and complications after ablative and limb-salvage therapy in lower extremity sarcoma of bone. J Surg Oncol 2000;73:198–205.
- [4] Zahlten-Hinguranage A, Bernd L, Ewerbeck V, Sabo D. Equal quality of life after limb-sparing or ablative surgery for lower extremity sarcomas. Br J Cancer 2004;91:1012–4..
- [5] Mavrogenis AF, Angelini A, Vottis C, Palmerini E, Rimondi E, Rossi G, et al. State-of-the-art approach for bone sarcomas. Eur J Orthop Surg Traumatol Orthopédie Traumatol 2015;25:5–15.
- [6] Beck LA, Einertson MJ, Winemiller MH, DePompolo RW, Hoppe KM, Sim FF. Functional outcomes and quality of life after tumor-related hemipelvectomy. Phys Ther 2008;88:916–27.
- [7] Shehadeh A, El Dahleh M, Salem A, Sarhan Y, Sultan I, Henshaw RM, et al. Standardization of rehabilitation after limb salvage surgery for sarcomas improves patients' outcome. Hematol Oncol Stem Cell Ther 2013;6:105–11.
- [8] Stoeckle E, Michot A, Henriques B, Sargos P, Honoré C, Ferron G, et al. [Surgery for soft-tissue sarcomas of the limbs and trunk wall]. Cancer Radiother J Soc Francaise Radiother Oncol 2016;20:657–65.
- [9] Stoeckle E, Michot A, Rigal L, Babre F, Sargos P, Henriques de Figueiredo B, et al. The risk of postoperative complications and functional impairment after multimodality treatment for limb and trunk wall soft-tissue sarcoma: Long term results from a monocentric series. Eur J Surg Oncol J Eur Soc Surg Oncol Br Assoc Surg Oncol 2017.

- [10] Jansen JA, van de Sande M a. J, Dijkstra PDS. Poor long-term clinical results of saddle prosthesis after resection of periacetabular tumors. Clin Orthop 2013;471:324–31.
- [11] Palacio A, Calmels P, Genty M, Le-Quang B, Beuret-Blanquart F. Oncology and physical medicine and rehabilitation. Ann Phys Rehabil Med 2009;52:568–78.
- [12] Silver JK, Baima J, Newman R, Galantino ML, Shockney LD. Cancer rehabilitation may improve function in survivors and decrease the economic burden of cancer to individuals and society. Work Read Mass 2013;46:455–72.
- [13] Custodio CM. Barriers to rehabilitation of patients with extremity sarcomas. J Surg Oncol 2007;95:393–9.
- [14] Cottias P, Jeanrot C, Vinh TS, Tomeno B, Anract P. Complications and functional evaluation of 17 saddle prostheses for resection of periacetabular tumors. J Surg Oncol 2001;78:90–100.
- [15] Kitagawa Y, Ek ET, Choong PFM. Pelvic reconstruction using saddle prosthesis following limb salvage operation for periacetabular tumour. J Orthop Surg Hong Kong 2006;14:155–62.

Table 1. Characteristics of sarcomas, treatments and complications in patients with lower-limb sarcoma.

<u>Patient no.</u>	<u>Sex Age (years)</u>	<u>Histology</u>	<u>Location (resection)</u>	<u>Surgery</u>	<u>Neo-adjutant treatment</u>	<u>Anatomical sacrifice</u>	<u>Complications (delay from surgery, days)</u>	<u>Admission in PMR after surgery (days)</u>
<u>1</u>	<u>Female 76</u>	<u>Chondrosarcoma grade III</u>	<u>Pelvis (R0)</u>	<u>Pelvectomy I-II Mega-THA</u>	<u>0</u>	<u>Femoral n. Iliopsoas m. Gluteus minimus m.</u>	<u>0 (0)</u>	<u>16</u>
<u>2</u>	<u>Male 56</u>	<u>Chondrosarcoma grade I</u>	<u>Pelvis (R0)</u>	<u>Pelvectomy I-II Mega-THA</u>	<u>0</u>	<u>Gluteal superior and inferior n.; Femoral n.</u>	<u>0 (0)</u>	<u>10</u>
<u>3</u>	<u>Male 65</u>	<u>Chondrosarcoma grade III</u>	<u>DF (R0)</u>	<u>Allo and auto graft synthesis</u>	<u>CT</u>	<u>Fibularis communis n.</u>	<u>Fibular palsy (0), phlebitis (11)</u>	<u>9</u>
<u>4</u>	<u>Male 59</u>	<u>Chondrosarcoma grade I</u>	<u>Pelvis (R1)</u>	<u>Pelvectomy I-II Mega-THA L5-S1 Arthrodesis</u>	<u>0</u>	<u>Pelvitrochanteric m.</u>	<u>Infection (21), THA Luxation (21)</u>	<u>16</u>
<u>5</u>	<u>Male 49</u>	<u>Chondrosarcoma grade III</u>	<u>Pelvis (R1)</u>	<u>Pelvectomy II Mega-THA</u>	<u>0</u>	<u>Pelvitrochanteric m.</u>	<u>Infection (12) THA Luxation (12)</u>	<u>20</u>
<u>6</u>	<u>Male 45</u>	<u>Chondroblastic osteosarcoma</u>	<u>PF (R1)</u>	<u>Mega-THA</u>	<u>CT</u>	<u>Gluteus maximus m.</u>	<u>0 (0)</u>	<u>8</u>
<u>7</u>	<u>Male 20</u>	<u>Leiomyosarcoma grade III</u>	<u>Pelvis (R1)</u>	<u>Pelvectomy II Mega-THA</u>	<u>RT CT</u>	<u>Pelvitrochanteric m.</u>	<u>0 (0)</u>	<u>10</u>
<u>8</u>	<u>Male 65</u>	<u>Osteosarcoma grade I</u>	<u>DF (R1)</u>	<u>Mega-TKA</u>	<u>0</u>	<u>Fibularis communis n., Quadriceps m.</u>	<u>Infection (40), Fibular palsy (0), Acute compartment syndrome (1)</u>	<u>30</u>
<u>9</u>	<u>Female 75</u>	<u>Myxofibrosarcoma grade III</u>	<u>PF (R0)</u>	<u>PTH massive</u>	<u>RT</u>	<u>Pelvitrochanteric m.</u>	<u>Infection (15), Phlebitis (22)</u>	<u>46</u>
<u>10</u>	<u>Male 29</u>	<u>Fusiform and epithelioid cells sarcoma</u>	<u>Pelvis and spine (R1)</u>	<u>Pelvectomy I L2-S1 Arthrodesis</u>	<u>CT</u>	<u>L2-L4 r. Iliopsoas m.</u>	<u>Infection (10)</u>	<u>30</u>

DF, distal femur; PF, proximal femur; Pelvectomy I (ilium); Pelvectomy II (acetabulum); Pelvectomy I-II (ilium + acetabulum); TKA, total knee arthroplasty; THA, total hip arthroplasty; CT, chemotherapy; RT, radiotherapy; m., muscle; n., nerve; r., roots.

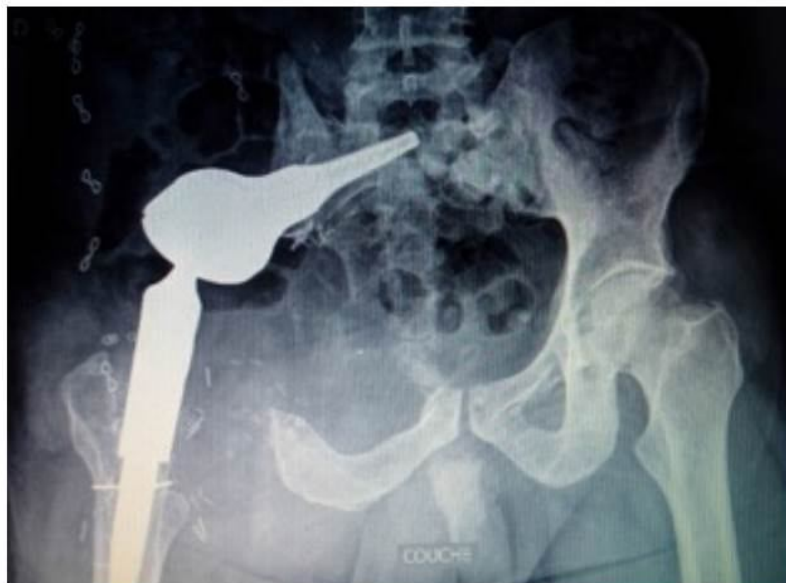
Table 2. Details on the management and future of patients.

<u>Patient no.</u>	<u>Sex</u> <u>Age</u> <u>(years)</u>	<u>Bed rest period</u> <u>(days)</u>	<u>Joint immobilization</u> <u>after surgery</u> <u>(days)</u>	<u>PMR hospitalization</u> <u>duration</u> <u>(days)</u>	<u>Total hospitalization</u> <u>duration</u> <u>(days)</u>	<u>Return home</u>	<u>Aids</u>	<u>MWD</u>	<u>Barthel index</u> <u>Initial /</u> <u>Final</u>
<u>1</u>	<u>Female</u> <u>76</u>	<u>0</u>	<u>45</u>	<u>168</u>	<u>184</u>	<u>No</u> <u>(care</u> <u>home</u> <u>for</u> <u>disabled</u> <u>person)</u>	<u>Wh</u>	<u>MW</u> <u>0</u>	<u>20 / 50</u>
<u>2</u>	<u>Male</u> <u>56</u>	<u>0</u>	<u>45</u>	<u>39</u>	<u>49</u>	<u>Yes</u>	<u>2 Cr</u>	<u>MW</u> <u>2</u>	<u>40 / 70</u>
<u>3</u>	<u>Male</u> <u>65</u>	<u>0</u>	<u>0</u>	<u>62</u>	<u>71</u>	<u>Yes</u>	<u>1 Cr +</u> <u>ankle</u> <u>foot</u> <u>orthosis</u>	<u>MW</u> <u>3</u>	<u>20 / 85</u>
<u>4</u>	<u>Male</u> <u>59</u>	<u>21</u>	<u>45</u>	<u>75</u>	<u>91</u>	<u>Yes</u>	<u>2 Cr</u>	<u>MW</u> <u>2</u>	<u>20 / 70</u>
<u>5</u>	<u>Male</u> <u>49</u>	<u>0</u>	<u>30</u>	<u>77</u>	<u>97</u>	<u>Yes</u>	<u>2 Cr</u>	<u>MW</u> <u>3</u>	<u>20 / 90</u>
<u>6</u>	<u>Male</u> <u>45</u>	<u>0</u>	<u>15</u>	<u>70</u>	<u>78</u>	<u>Yes</u>	<u>2 Cr</u>	<u>MW</u> <u>1</u>	<u>25 / 65</u>
<u>7</u>	<u>Male</u> <u>20</u>	<u>0</u>	<u>30</u>	<u>94</u>	<u>104</u>	<u>Yes</u>	<u>2 Cr</u>	<u>MW</u> <u>3</u>	<u>20 / 85</u>
<u>8</u>	<u>Male</u> <u>65</u>	<u>45</u>	<u>21</u>	<u>69</u>	<u>99</u>	<u>Yes</u>	<u>2 Cr +</u> <u>ankle</u> <u>foot</u> <u>orthosis</u>	<u>MW</u> <u>2</u>	<u>20 / 70</u>
<u>9</u>	<u>Female</u> <u>75</u>	<u>0</u>	<u>45</u>	<u>101</u>	<u>147</u>	<u>Yes</u>	<u>walker</u>	<u>MW</u> <u>1</u>	<u>20 / 65</u>
<u>10</u>	<u>Male</u> <u>29</u>	<u>0</u>	<u>15</u>	<u>103</u>	<u>133</u>	<u>No</u> <u>(parents'</u> <u>home)</u>	<u>Wh</u>	<u>MW</u> <u>0</u>	<u>20 / 55</u>

PMR, physical medicine and rehabilitation; Wh, wheelchair; Cr, crutch(es); MWD, maximal walking distance; MW 0, transfers autonomous; MW 1, maximal walking distance > 50 m; MW 2 maximal walking distance > 300 m; MW 3, maximal walking distance > 1000 m.



181
182



183

Accepted Manuscript