



**HAL**  
open science

## Apelin, the Devil Inside Brain Tumors

Elizabeth Harford-Wright, Julie Gavard

► **To cite this version:**

Elizabeth Harford-Wright, Julie Gavard. Apelin, the Devil Inside Brain Tumors . Journal of experimental neuroscience, 2018, 12, pp.eCollection 2018. 10.1177/1179069518759680 . inserm-01810684

**HAL Id: inserm-01810684**

**<https://inserm.hal.science/inserm-01810684>**

Submitted on 8 Jun 2018

**HAL** is a multi-disciplinary open access archive for the deposit and dissemination of scientific research documents, whether they are published or not. The documents may come from teaching and research institutions in France or abroad, or from public or private research centers.

L'archive ouverte pluridisciplinaire **HAL**, est destinée au dépôt et à la diffusion de documents scientifiques de niveau recherche, publiés ou non, émanant des établissements d'enseignement et de recherche français ou étrangers, des laboratoires publics ou privés.

# Apelin, the Devil Inside Brain Tumors

Elizabeth Harford-Wright<sup>1,2</sup> and Julie Gavard<sup>1,3</sup> 

<sup>1</sup>CRCINA, Team SOAP, Inserm, CNRS, Université de Nantes, Université d'Angers, Nantes, France. <sup>2</sup>MRC Laboratory for Molecular Cell Biology, University College London, London, UK. <sup>3</sup>Institut de Cancerologie de l'Ouest, Rene Gauducheau, Saint-Herblain, France.

Journal of Experimental Neuroscience  
Volume 12: 1–3  
© The Author(s) 2018  
Reprints and permissions:  
sagepub.co.uk/journalsPermissions.nav  
DOI: 10.1177/1179069518759680



**ABSTRACT:** Glioblastoma multiforme are mortifying brain tumors that contain a subpopulation of tumor cells with stem-like properties, termed as glioblastoma stem-like cells (GSCs). These GSCs constitute an autonomous reservoir of aberrant cells able to initiate, maintain, and repopulate the tumor mass. A new therapeutic strategy would consist of targeting the GSC population. The GSCs are situated in perivascular niches, closely associated with brain microvascular endothelial cells thereby involved in bidirectional molecular and cellular interactions. In this scenario, the endothelium not only supplies oxygen and necessary nutrients but also seeds a protective microenvironment for tumor growth. Although GSC fate, plasticity, and survival are regulated by external cues emanating from endothelial cells, the nature of such angiocrine signals remains unknown. Our laboratory conclusively demonstrated that brain endothelial cells positively control the expansion of GSCs.<sup>1</sup> Notably, we found that GSCs are addicted to the hormonal peptide apelin (APLN) secreted by surrounding endothelial cells, and identified the APLN/APLNR nexus as a promising druggable network in glioblastoma.

**KEYWORDS:** Glioblastoma, apelin, GPCR, endothelium

**RECEIVED:** January 24, 2018. **ACCEPTED:** January 26, 2018.

**TYPE:** Commentary

**FUNDING:** The author(s) disclosed receipt of the following financial support for the research, authorship, and/or publication of this article: This research was funded by Ligue nationale contre le cancer comité de Loire-Atlantique et Vendée (J.G.) and Region Pays de la Loire et Nantes Metropole under Connect Talent Grant (J.G.).

**DECLARATION OF CONFLICTING INTERESTS:** The author(s) declared no potential conflicts of interest with respect to the research, authorship, and/or publication of this article.

**CORRESPONDING AUTHOR:** Julie Gavard, CRCINA, Team SOAP, Inserm, CNRS, Université de Nantes, Université d'Angers, 8 quai Moncoussu, Nantes, F-44000, France. Email: julie.gavard@inserm.fr

**COMMENT ON:** Harford-Wright E, Andre-Gregoire G, Jacobs KA, Treps L, Le Gonidec S, Leclair HM, Gonzalez-Diest S, Roux Q, Guillonneau F, Loussouarn D, Oliver L, Vallette FM, Foufelle F, Valet P, Davenport AP, Glen RC, Bidere N, Gavard J. Pharmacological targeting of apelin impairs glioblastoma growth. *Brain*. 2017 Nov 1;140(11):2939-2954. doi: 10.1093/brain/awx253. PubMed PMID: 29053791.

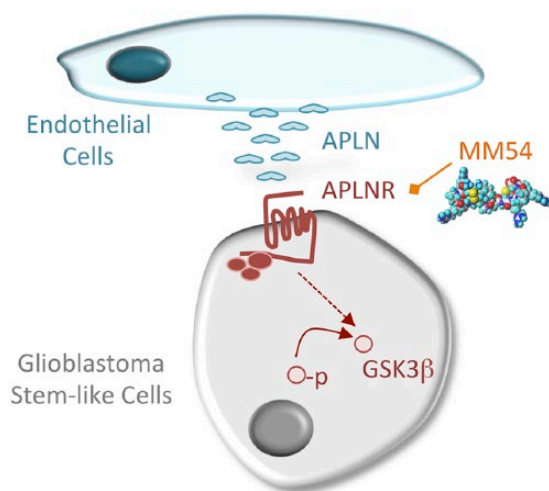
Glioblastoma is the most common primary brain tumor in adults, which is associated with an extremely poor prognosis, with a median survival following diagnosis of 15 months.<sup>2</sup> Glioblastoma are aggressive tumors, characterized by areas of rapid cell proliferation, angiogenesis, and necrosis, reflecting the aggressive nature of this disease. To date, standard treatment for glioblastoma involves surgical resection of as much of the tumor bulk as possible, followed by radiotherapy and chemotherapy to eliminate the remaining cells. However, these treatments are palliative in nature, and tumors fatally relapse within 7 to 10 months. As such, long-term survival rates for glioblastoma patients have not significantly improved over the past decade.<sup>3</sup>

Glioblastoma are associated with significant inter- and intra-tumoral heterogeneity. Within glioblastoma exists a population of tumor-initiating cells also named as glioblastoma stem-like cells (GSCs) that have a proposed role in tumor initiation, resistance to current therapies, invasion, and angiogenesis.<sup>4–6</sup> Although some debates on the origin and definition of GSCs remain, the presence of these cells within specific niches within tumors is now well accepted.<sup>4</sup> The GSCs interact with the tumor micro-environment, residing in hypoxic niches near the endothelial vessels.<sup>7–10</sup> The localization of GSCs in these vascular niches facilitates communication between endothelial cells and GSCs, enabling a privileged access for GSCs to tumor endothelium-secreted factors. Indeed, soluble growth factors released from the endothelium, collectively termed as “angiocrines,” have been reported in various physiological and pathological conditions.<sup>11,12</sup> However, the specific endothelial-secreted factors involved in the maintenance of GSCs are yet to be identified. Characterization

of the protein secretome involved in the expansion of GSCs thus has considerable implications in the improvement of treatment options for glioblastoma patients.

To study the molecular basis of this cross talk, we first developed an original *in vitro* model by co-culturing human brain endothelial cells with patient-derived GSCs.<sup>8,9,13,14</sup> We demonstrated that factors secreted by brain endothelial cells positively control the expansion and survival of GSCs, and vice versa, GSCs modulate the endothelial behavior. Recent research from our laboratory has further suggested that the vasoactive peptide apelin (*APLN*) may be a central regulator of GSC maintenance.<sup>1</sup> This short peptide is one of the endogenous ligands of the G protein-coupled receptor APJ (*APLNR*)<sup>15</sup> and is widely expressed throughout various tissues, including the brain.<sup>16</sup> Apelin was identified by mass spectrometry from the brain endothelial secretome and found expressed in glioblastoma patient tissue in close proximity to blood vessels.<sup>1</sup> *In vitro*, the addition of exogenous apelin was able to sustain GSC growth via its receptor APJ. Knocking down the expression level of APJ in GSCs via small interfering RNA/short hairpin RNA (shRNA) indeed curbs the effects of endothelial cell-conditioned media and of apelin alone. Likewise, pharmacologic inhibition of APJ with a novel competitive antagonist bicyclic peptide MM54<sup>17</sup> inhibited endothelial-mediated GSC expansion *in vitro*. In addition, when tested *in vivo* in 2 mouse models of tumor growth, MM54 was found to be safe and effective in reducing tumor growth and increasing survival of GSC-implanted mice. Notably, no obvious adverse effects on the cardiovascular parameters were noted on repeated injections. Together, these results suggest that endothelial-secreted apelin may act as a paracrine





**Figure 1.** Proposed model for the angiocrine action of APLN in glioma growth. Endothelial cells produce and release the hormonal peptide apelin (APLN), which operates on GSCs, through its cognate receptor the G protein-coupled receptor APLNR. The APLN/APLNR complex allows the activation of the glycogen synthase kinase, GSK3 $\beta$  (nonphosphorylated on S9) and maintains in turn the stemness properties of GSCs. The competitive antagonist MM54 counteracts the effect of endothelial cells on GSCs and reduces tumor growth in mice. GSCs indicate glioblastoma stem-like cells.

signal that sustains GSCs and therefore represents a possible novel therapeutic target for the treatment of glioblastoma.

Mechanistically, the precise molecules mediating the effect of endothelial apelin on GSCs requires further investigation. Although the *in vitro* data clearly demonstrate that apelin directly sustains GSC spheres, the reduction in tumor growth *in vivo* following administration of the apelin antagonist could be explained by either a direct or an indirect effect on GSCs. However, it does appear that glycogen synthase kinase 3 $\beta$  (GSK3 $\beta$ ) signaling may play a role in this process downstream of APJ.<sup>1</sup> Moreover, phosphorylation of GSK3 $\beta$  was observed both *in vitro* and *in vivo*, suggesting an inhibitory effect of the apelin antagonist on GSK3 $\beta$  signaling.<sup>1</sup> Indeed, the function of GSK3 $\beta$  signaling has been previously reported to play varied roles in malignancy, depending on the substrate and tumor type. It has been previously reported that GSK3 $\beta$  has a role in cancer stem cell self-renewal and glioblastoma tumorigenesis.<sup>18</sup> Consistent with the proposed mechanism of apelin in GSC maintenance, administration of the GSK3 $\beta$  competitive inhibitor Tideglusib is effective in a preclinical model of glioblastoma, with inhibition of GSK3 $\beta$  found to inhibit GSC self-renewal and sensitize glioblastoma to temozolomide (TMZ), the alkylating agent used in clinics, without effecting normal astrocytes.<sup>18</sup> Likewise, the apelin receptor antagonist MM54 reduces GSC self-renewal and aggravate the effects of the chemotherapeutic agent TMZ.<sup>1</sup> Collectively, these data suggest that apelin may directly affect GSCs by inhibition of GSK3 $\beta$  signaling. Future work will be designed to precisely address the signaling complexes engaged downstream of APJ in GSCs, *in vitro* and *in vivo*.

An alternate argument is that the observed reduction in tumor volume associated with MM54 administration may be due to a reduction in angiogenesis. Apelin has previously been implicated in angiogenesis and is reported to induce vessel sprouting and stabilization of contacts between endothelial cells.<sup>15,16</sup> Indeed, apelin has a proposed role in tumor angiogenesis and response to anti-angiogenic therapies, with apelin messenger RNA reported to be elevated in patients who do not respond to anti-angiogenic therapy.<sup>19</sup> Moreover, apelin expression has been positively correlated with increased microvessel densities and subsequent tumor growth in human non-small-cell lung carcinoma.<sup>20</sup> It is well established that tumors rely heavily on neo-angiogenesis to receive the nutrients they require to survive.<sup>21</sup> Consequently, the observed effect on tumor growth by blocking apelin *in vivo* may also be associated with an anti-angiogenic effect rather than by directly targeting the GSCs. However, the weight of the *in vitro* data suggests that endothelial-derived apelin has a clear role in the maintenance of these human GSCs.<sup>1</sup> Moreover, implantation of GSCs in which the apelin receptor has been silenced while left intact in host endothelial cells demonstrated a reduction in tumor size compared with shRNA control groups, a result which cannot be explained by apelin-mediated changes toward angiogenesis.

Although impressive results were obtained with the MM54 compound in xenografted mice, it is important to note that both genetic and pharmacological evidence for the role of APJ in glioma growth were established in immuno-compromised animals. In keeping with this idea, recent published data suggest that in melanoma, point mutations of the *APLNR* gene are associated with a failure of targeted immunotherapies<sup>22</sup> indicating that the interaction between APLNR and the immune system may warrant further investigation. Nonetheless, tumor growth *in vivo* is a complicated and multifaceted process that is rarely due to one factor or mechanism alone, and compounds that target multiple aspects of tumorigenesis may prove extremely beneficial. Together, the results of this study highlight the potential of endothelial-derived apelin as an exciting target for glioma growth (Figure 1).

## Acknowledgements

The authors thank the members of the SOAP team (Nantes, France).

## Author Contributions

EHW wrote the manuscript; JG edited the text and prepared the figure.

## ORCID iD

Julie Gavard  <https://orcid.org/0000-0002-7985-9007>

## REFERENCES

1. Harford-Wright E, Andre-Gregoire G, Jacobs KA, et al. Pharmacological targeting of apelin impairs glioblastoma growth. *Brain*. 2017;140:2939–2954.

- Stupp R, Hegi ME, Mason WP, et al. Effects of radiotherapy with concomitant and adjuvant temozolomide versus radiotherapy alone on survival in glioblastoma in a randomised phase III study: 5-year analysis of the EORTC-NCIC trial. *Lancet Oncol.* 2009;10:459–466.
- Stupp R, Taillibert S, Kanner AA, et al. Maintenance therapy with tumor-treating fields plus temozolomide vs temozolomide alone for glioblastoma: a randomized clinical trial. *JAMA.* 2015;314:2535–2543.
- Lathia JD, Mack SC, Mulkearns-Hubert EE, Valentim CL, Rich JN. Cancer stem cells in glioblastoma. *Genes Dev.* 2015;29:1203–1217.
- Hale JS, Sinyuk M, Rich JN, Lathia JD. Decoding the cancer stem cell hypothesis in glioblastoma. *CNS Oncol.* 2013;2:319–330.
- Yan K, Yang K, Rich JN. The evolving landscape of glioblastoma stem cells. *Curr Opin Neurol.* 2013;26:701–707.
- Calabrese C, Poppleton H, Kocak M, et al. A perivascular niche for brain tumor stem cells. *Cancer Cell.* 2007;11:69–82.
- Galan-Moya EM, Le Guelte A, Lima Fernandes E, et al. Secreted factors from brain endothelial cells maintain glioblastoma stem-like cell expansion through the mTOR pathway. *EMBO Rep.* 2011;12:470–476.
- Jacobs KA, Harford-Wright E, Gavard J. Neutralizing gp130 interferes with endothelial-mediated effects on glioblastoma stem-like cells. *Cell Death Differ.* 2017;24:384.
- Jin X, Kim LJY, Wu Q, et al. Targeting glioma stem cells through combined BMI1 and EZH2 inhibition. *Nat Med.* 2017;23:1352–1361.
- Ding BS, Nolan DJ, Butler JM, et al. Inductive angiocrine signals from sinusoidal endothelium are required for liver regeneration. *Nature.* 2010;468:310–315.
- Cao Z, Ye T, Sun Y, et al. Targeting the vascular and perivascular niches as a regenerative therapy for lung and liver fibrosis. *Sci Transl Med.* 2017;9:eaai8710.
- Treps L, Edmond S, Harford-Wright E, et al. Extracellular vesicle-transported semaphorin3A promotes vascular permeability in glioblastoma. *Oncogene.* 2016;35:2615–2623.
- Le Guelte A, Galan-Moya EM, Dwyer J, et al. Semaphorin 3A elevates endothelial cell permeability through PP2A inactivation. *J Cell Sci.* 2012;125:4137–4146.
- Pitkin SL, Maguire JJ, Kuc RE, Davenport AP. Modulation of the apelin/APJ system in heart failure and atherosclerosis in man. *Br J Pharmacol.* 2010;160:1785–1795.
- Kalin RE, Kretz MP, Meyer AM, Kispert A, Heppner FL, Brandli AW. Paracrine and autocrine mechanisms of apelin signaling govern embryonic and tumor angiogenesis. *Dev Biol.* 2007;305:599–614.
- Macaluso NJ, Pitkin SL, Maguire JJ, Davenport AP, Glen RC. Discovery of a competitive apelin receptor (APJ) antagonist. *ChemMedChem.* 2011;6:1017–1023.
- Zhou A, Lin K, Zhang S, et al. Nuclear GSK3beta promotes tumorigenesis by phosphorylating KDM1A and inducing its deubiquitylation by USP22. *Nat Cell Biol.* 2016;18:954–966.
- Zuurbier L, Rahman A, Cordes M, et al. Apelin: a putative novel predictive biomarker for bevacizumab response in colorectal cancer. *Oncotarget.* 2017;8:42949–42961.
- Berta J, Kenessey I, Dobos J, et al. Apelin expression in human non-small cell lung cancer: role in angiogenesis and prognosis. *J Thorac Oncol.* 2010;5:1120–1129.
- Azzi S, Hebda JK, Gavard J. Vascular permeability and drug delivery in cancers. *Front Oncol.* 2013;3:211.
- Patel SJ, Sanjana NE, Kishton RJ, et al. Identification of essential genes for cancer immunotherapy. *Nature.* 2017;548:537–542.