



**HAL**  
open science

## The importance of the vascular endothelial barrier in the immune-inflammatory response induced by radiotherapy

Olivier Guipaud, Cyprien Jaillet, Karen Clément-Colmou, Agnès François, Stéphane Supiot, Fabien Milliat

### ► To cite this version:

Olivier Guipaud, Cyprien Jaillet, Karen Clément-Colmou, Agnès François, Stéphane Supiot, et al.. The importance of the vascular endothelial barrier in the immune-inflammatory response induced by radiotherapy: The endothelium as a checkpoint of immune response in radiotherapy. *British Journal of Radiology*, 2018, Epub ahead of print. 10.1259/bjr.20170762 . inserm-01782208

**HAL Id: inserm-01782208**

**<https://inserm.hal.science/inserm-01782208>**

Submitted on 1 May 2018

**HAL** is a multi-disciplinary open access archive for the deposit and dissemination of scientific research documents, whether they are published or not. The documents may come from teaching and research institutions in France or abroad, or from public or private research centers.

L'archive ouverte pluridisciplinaire **HAL**, est destinée au dépôt et à la diffusion de documents scientifiques de niveau recherche, publiés ou non, émanant des établissements d'enseignement et de recherche français ou étrangers, des laboratoires publics ou privés.

## REVIEW ARTICLE

# The importance of the vascular endothelial barrier in the immune-inflammatory response induced by radiotherapy

Running title:

The endothelium as a checkpoint of immune response in radiotherapy

Olivier Guipaud<sup>1</sup>, PhD, Cyprien Jaillet<sup>1</sup>, PhD, Karen Clément-Colmou<sup>2,3</sup>, MD, Agnès François<sup>1</sup>, PhD, Stéphane Supiot<sup>2,3</sup>, MD, PhD, and Fabien Milliat<sup>1</sup>, PhD

<sup>1</sup>Institut de Radioprotection et de Sûreté Nucléaire (IRSN), PSE-SANTE, SERAMED, LRMed, Fontenay-aux-Roses, France.

<sup>2</sup>Institut de Cancérologie de l'Ouest, Département de Radiothérapie, Nantes St-Herblain, France.

<sup>3</sup>Centre de Recherche en Cancérologie et Immunologie Nantes-Angers (CRCiNA), Unité U1232, Institut de Recherche en Santé de l'Université de Nantes, Nantes, France

Address correspondence to: Dr. Olivier Guipaud

E-mail: [olivier.guipaud@irsn.fr](mailto:olivier.guipaud@irsn.fr)

## ABSTRACT

1  
2 Altered by ionizing radiation, the vascular network is considered as a prime target to limit normal  
3 tissue damage and improve tumour control in radiotherapy. Irradiation damages and/or activates  
4 endothelial cells, which then participate in the recruitment of circulating cells, especially by  
5 overexpressing cell adhesion molecules, but also by other as yet unknown mechanisms. Radiation-  
6 induced lesions are associated with infiltration of immune-inflammatory cells from the blood and/or  
7 the lymph circulation. Damaged cells from the tissues and immune-inflammatory resident cells  
8 release factors that attract cells from the circulation, leading to the restoration of tissue balance by  
9 fighting against infection, elimination of damaged cells and healing of the injured area. In normal  
10 tissues that surround the tumours, the development of an immune-inflammatory reaction in  
11 response to radiation-induced tissue injury can turn out to be chronic and deleterious for the organ  
12 concerned, potentially leading to fibrosis and/or necrosis of the irradiated area. Similarly, tumours  
13 can elicit an immune-inflammation reaction, which can be initialized and amplified by cancer  
14 therapy such as radiotherapy, although immune checkpoints often allow many cancers to be  
15 protected by inhibiting the T cell signal. Herein, we have explored the involvement of vascular  
16 endothelium in the fate of healthy tissues and tumours undergoing radiotherapy. This review also  
17 covers current investigations that take advantage of the radiation-induced response of the  
18 vasculature to spare healthy tissue and/or target tumours better.  
19  
20  
21  
22  
23  
24  
25  
26  
27  
28  
29  
30  
31  
32  
33  
34  
35  
36  
37  
38  
39  
40  
41  
42  
43  
44  
45  
46  
47  
48  
49  
50  
51  
52  
53  
54  
55  
56  
57  
58  
59  
60  
61  
62  
63  
64  
65

## INTRODUCTION

All tissues can be damaged by ionizing radiation beyond a dose-volume threshold.<sup>1</sup> The damage results from the initial deposition of energy within the tissue. The processes of radiation injury begin at once after the irradiation, but some of the clinical and histological signs, such as necrosis and fibrosis, become visible weeks, months, or even years after a therapeutic treatment.<sup>1,2</sup> Damage is characterized by cell death, phenotypic changes, immune-inflammatory cell infiltration, and vascular and tissue remodelling, which can lead to chronic injury and ultimately necrosis.

Radiotherapy (RT) is used to treat a variety of cancers, as well as benign tumours, in more than half of patients with tumours.<sup>3</sup> Despite great advances in radiation dose delivery techniques, the therapeutic index of RT is still limited by normal tissue injury in organs at risk and by the radiation resistance of some tumours.<sup>4</sup> New approaches to optimize the response of normal tissue and tumours thus remain essential for improving the outcome of RT, by increasing the likelihood of cancer cure or by decreasing normal tissue toxicity, or both.<sup>5,6</sup>

In the vessels, the endothelium is a key cell compartment for the response to ionizing radiation of healthy tissue and tumours, and represents a promising target to improve the differential effect of RT in the future.<sup>6,7</sup> Following radiation exposure, the global endothelial cell response covers a wide range of molecular changes with a global expression pattern of modifications.<sup>8,9</sup> Changes occur at the transcriptional, translational and post-translational levels and impact cell phenotype as well as the microenvironment by production and secretion of soluble factors such as reactive oxygen and nitrogen species (respectively ROS and RNS), chemokines, cytokines and growth factors. These radiation-induced dynamic modifications of molecular networks may control the endothelial cell phenotype and govern recruitment of immune cells.

Ionizing radiation induces an inflammatory response in organs<sup>10</sup> and tumours<sup>11</sup> characterized by immune-inflammatory cell infiltration. Vascular endothelium plays an integrative role in the tissue response following stress and controls the initiation and resolution of inflammatory responses through the regulation of chemotaxis and activation of leukocytes in the periphery.<sup>11,12</sup> The development of this inflammatory response is regulated by a complex process that involves leukocyte-endothelium interactions composed of activation, rolling, adhesion and transmigration in the surrounding tissue<sup>13</sup> (**Figure 1**). On the other hand, engaging the immune system for optimal anti-cancer therapy is an attractive contemporary concept.<sup>14</sup> Promising current strategies generate an effective immune response to destroy the tumour in combination with RT.<sup>15</sup> In this context, control of the adaptive immune response by the tumour endothelium is a crucial process.

## THE VASCULAR ENDOTHELIUM

A healthy endothelium is in a well-balanced state between pro- and anti-oxidants, vasodilators and vasoconstrictors, pro- and anti-inflammatory molecules, and pro- and anti-thrombotic signals. It provides key functions in angiogenic and inflammatory processes, which are activated and finely regulated when required. As can happen in the case of inflammation, breakdown of this complex

1  
2  
3  
4  
5  
6  
7  
8  
9  
10  
11  
12  
13  
14  
15  
16  
17  
18  
19  
20  
21  
22  
23  
24  
25  
26  
27  
28  
29  
30  
31  
32  
33  
34  
35  
36  
37  
38  
39  
40  
41  
42  
43  
44  
45  
46  
47  
48  
49  
50  
51  
52  
53  
54  
55  
56  
57  
58  
59  
60  
61  
62  
63  
64  
65

balance leads to a diseased or pathological endothelium displaying pro-oxidant, vasoconstrictor, pro-inflammatory and pro-thrombotic properties.

## Role in immune-inflammatory cell recruitment

The endothelium is able to activate a global molecular program in physiological conditions or in response to stress and serves as a key checkpoint to control the immune response. The adhesion of leukocytes to the vascular endothelium is one of the major characteristics of inflammation. This process involves glycoproteins which allow the adhesion of circulating leukocytes in the blood stream to endothelial cells. The objective of this adhesion is the passage of leukocytes from the bloodstream to the injured site. The endothelial cell-leukocyte interaction is the result of a large number of physical (shear forces), chemical (weak interactions and impairment of nitric oxide [NO] production) and biological (proteins and specific glycoproteins, substrates and cytokines) factors. Cell recruitment takes place through a cascade of seven events consisting of capture (or tethering), rolling, slow rolling, arrest, adhesion strengthening and spreading, intravascular crawling, and paracellular and transcellular transmigration<sup>13</sup> (**Figure 1**). The multiplicity of molecular choices for each of the stages provides a great diversity of very specific combinations of leukocyte recruitment that makes it possible to adapt recruitment to the type of tissue and injury.<sup>13,16</sup>

Cell adhesion molecules (CAMs) and activation of integrins are at the heart of the adhesion process following selectin ligand recognition. Modulation of adhesion occurs through the action of chemical and biological factors released by injured tissues, endothelial cells, leukocytes and innate lymphoid cells. For instance, the degranulation of activated mast cells releases histamine, leukotrienes and platelet activating factor (PAF). Histamine then activates selectins, which allows the capture of leukocytes and the initiation of rolling. Subsequently, leukotrienes and PAF participate in the activation of integrins by increasing their avidity and expression, thus helping to maintain rolling and firm adhesion. On the other hand, cytokines and chemokines induce the transcription of endothelial CAMs such as selectins, intercellular adhesion molecule 1 (ICAM-1) and vascular cell adhesion molecule 1 (VCAM-1). Activated endothelial cells also produce excess ROS, which results in the activation of oxidative stress-sensitive transcription factors such as the nuclear factor-kappa B (NF- $\kappa$ B) or the activator protein 1 (AP-1). Interestingly, AP-1 also directs endothelial cells towards a pro-adhesive leukocyte phenotype in an inflammatory environment.<sup>17</sup> Conversely, NO, prostaglandin I<sub>2</sub> (PGI<sub>2</sub>) and adenosine are endogenous anti-adhesive factors.<sup>17</sup>

## Importance of the endothelial glycome in endothelial-immune cell interactions

Modifications of the glycan profile, whose entire spectrum defines the glycome, alter the function of proteins and participate in cellular functions, notably adhesion and cellular communication in endothelial cells. Selectins are specialized protein receptors for leukocyte glycoconjugates that mediate tethering and rolling of leukocytes under flow in inflamed vascular beds.<sup>18</sup> Endothelial cells have many glycoconjugates on their surface that are regulated in an inflammatory context and are involved in interactions with circulating cells (**Figure 1**).<sup>19</sup> These glycan structures can thus be considered as entry points for the immune system. In addition, the endothelial glycocalyx, a

1 covering composed of a layer of polysaccharides covalently bound to the lipids and proteins of the  
2 membrane, also plays an important role in the immune-inflammatory response, especially via its  
3 role in the leukocyte-endothelial interaction.<sup>20</sup> Following an acute or chronic injury, pro-  
4 inflammatory stimuli, such as TNF- $\alpha$ , induce shedding of glycosaminoglycans (GAGs), thereby  
5 decreasing the width and size of the endothelial glycocalyx.<sup>21</sup> This allows greater accessibility of  
6 endothelial glycoprotein epitopes, on which circulating leukocytes roll and to which they adhere.  
7  
8  
9

## 10 RADIOBIOLOGY AND RADIOPATHOLOGY OF THE VASCULAR 11 ENDOTHELIUM 12 13

14 Ionizing radiation has multiple effects on the endothelium, which is thought to contribute to the  
15 initiation and progression of radiation-induced damage to healthy tissues following RT.<sup>22</sup> Among the  
16 main effects are radiation-induced endothelial cell death, loss of thromboresistance, cell activation  
17 and secretion of soluble factors such as cytokines and growth factors.<sup>23</sup> Vessels of normal tissues  
18 surrounding the tumours and of the tumours themselves are both impacted by ionizing radiation  
19 during RT. In most cases, normal and pathological tissues comprise genetically normal endothelial  
20 cells. In tumours, however, vascular cells undergo the influence of the tumour environment and  
21 display different phenotypes, and sometimes different genotypes, from those of endothelial cells  
22 from normal tissues. **Figure 2** shows a schematic view of the effects of ionizing radiation on the  
23 vascular endothelium, which are detailed below.  
24  
25  
26  
27  
28  
29

### 30 Differential effects of various forms of radiotherapy on endothelial damage 31

32 External beam RT using photon radiation, and especially X-rays, is used in almost all RT treatments.  
33 However, particular indications can use high linear transfer energy (LET) particle RT with protons or  
34 carbon ions (hadrontherapy), as well as internal RT with radioactive sources of gamma-rays  
35 (brachytherapy) and systemic RT using targeted radionuclide therapy (radioimmunotherapy).  
36 Although not investigated in depth, the effects of gamma- and X-rays on endothelium are supposed  
37 to be similar because of their equal relative biological effectiveness (RBE). On the other hand, it is  
38 conceivable that differences in endothelial cell response may occur as a function of dose rate,  
39 energy spectrum and fractionation schedule. More likely, radioimmunotherapy and hadrontherapy  
40 may have very different effects on endothelium compared to photon radiation, because of their  
41 high LET radiation properties. However, most data are available on the effects of low LET radiation  
42 and data on high LET radiation are scarce. For example, the impact of carbon and Fe ion irradiation  
43 on the response of endothelial cells has been compared to X-ray irradiation, showing a differential  
44 effect of high LET radiation compared to photon radiation.<sup>24,25</sup> Interestingly, C-ions seemed to be  
45 more effective in damaging endothelial cells than X-rays shortly after exposure, but late damage  
46 was not found at the doses used (0.25-1.5 Gy).<sup>25</sup> On the other hand, Fe ions did not significantly  
47 induce inflammation, in contrast to X-rays, but the radiation impact on gene and protein expression  
48 was more marked and longer lasting for Fe ions than for X-rays.<sup>24</sup>  
49  
50  
51  
52  
53  
54  
55  
56  
57  
58

### 59 Endothelial cell apoptosis and senescence 60 61 62 63 64 65

1 Apoptosis is a frequent cell death process after irradiation.<sup>26</sup> Exposure of healthy tissues to a high  
2 dose of ionizing radiation ( $\geq 10$  Gy) induces an acute endothelial reaction characterized by a rapid  
3 wave of endothelial apoptosis.<sup>22,27</sup> Yet, the key role and the existence itself of radiation-induced  
4 endothelial apoptosis in normal tissue lesions remain controversial. Endothelial apoptosis has been  
5 shown to be the primary event responsible for gastrointestinal syndrome after whole-body  
6 irradiation at 15 Gy in mice.<sup>28</sup> Despite contradictory results, which have been discussed elsewhere,  
7  
8  
9  
10  
11  
12  
13  
14  
15  
16  
17  
18  
19  
20  
21  
22  
23  
24  
25  
26  
27  
28  
29  
30  
31  
32  
33  
34  
35  
36  
37  
38  
39  
40  
41  
42  
43  
44  
45  
46  
47  
48  
49  
50  
51  
52  
53  
54  
55  
56  
57  
58  
59  
60  
61  
62  
63  
64  
65

11 Endothelial cells also experience stress-induced premature senescence *in vitro* and likely *in vivo*.<sup>30</sup>  
12 Senescent irradiated endothelial cells can accumulate in tissues, promoting age- and therapy-  
13 related disorders, including cardiovascular diseases. Through secretion of many inflammatory  
14 mediators and extracellular proteases, called the senescence-associated secretory phenotype (SASP),  
15 the senescent phenotype causes chronic inflammation and disruption of tissue structure and  
16 function. The surviving irradiated cells likely participate in the development of a dysfunctional  
17 vascular phenotype. In the early phase, this is marked by excessive secretion of pro-inflammatory  
18 cytokines, increased recruitment of circulating cells such as platelets and lymphocytes, activation  
19 of the coagulation system, and increased vascular permeability.<sup>22</sup> In the late phase, a collapse of  
20 the vessels is observed, associated with a reduction in the thickness of the basal membrane and the  
21 persistence of a pro-coagulating, pro-inflammatory and potentially senescent endothelial  
22 phenotype.<sup>31</sup>

## 31 Endothelial activation

33 Ionizing radiation triggers changes in the phenotype of endothelial cells that lead to endothelial  
34 activation and then potentially to endothelial dysfunction. Endothelial activation is defined as the  
35 endothelial expression of adhesion molecules, such as VCAM-1, ICAM-1 and E-selectin.<sup>32</sup> It is usually  
36 triggered by pro-inflammatory cytokines such as tumour necrosis factor (TNF)- $\alpha$  or interleukin (IL)-6.  
37  
38  
39  
40  
41  
42  
43  
44  
45  
46  
47  
48  
49  
50  
51  
52  
53  
54  
55  
56  
57  
58  
59  
60  
61  
62  
63  
64  
65

1 overall demonstrated that the increase in expression of adhesion molecules by endothelial cells  
2 after irradiation plays a decisive role in the recruitment of circulating cells and thus in the  
3 radiation-induced inflammation of the tissue and/or the tumour, with a potential deleterious effect  
4 on normal tissues.  
5

## 6 Endothelial cell-derived extracellular vesicles

7  
8 Cell-derived extracellular vesicles (EVs), comprising exosomes and microvesicles, have emerged as  
9 important mediators of a new mode of intercellular communication.<sup>47,48</sup> Like all cells, endothelial  
10 cells are able to secrete extracellular vesicles. These endothelial vesicles have been shown to play a  
11 variety of roles in the human body, ranging from contributing to cardiovascular disease to promoting  
12 endothelial cell survival.<sup>49</sup> Ionising radiation has been shown to induce production of extracellular  
13 vesicles by both primary and tumour cells.<sup>50-54</sup> Endothelial injury by ionising radiation elicits the  
14 release of microparticles, in correlation with apoptosis and ROS formation, which can be inhibited  
15 by antioxidative treatment.<sup>55</sup> It is now crucial to clarify the role of these endothelial microparticles  
16 in the context of irradiation as they may act locally or far from the irradiation site as mediators of  
17 angiogenesis, inflammation, coagulation or injury, certainly through their protein and/or microRNA  
18 content.<sup>56</sup>  
19  
20  
21  
22  
23  
24  
25

## 26 Disruption of the endothelial cell-cell barrier after radiotherapy

27  
28 RT is known to induce vascular permeability. Several studies are concordant with an increase of  
29 albumin leakage after single-dose irradiation from 2 Gy to 30 Gy or more. The increase in  
30 permeability is transitory, varies from one day to one week after RT and penetration depth from  
31 vessels varies by a factor 1.5 to 6, depending on the dose.<sup>57,58</sup> In microvascular endothelial cells,  
32 cytoskeletal changes mediated by RhoA-guanosine triphosphatase and Rho kinase are implicated in  
33 the redistribution of basal VE-cadherin and intercellular junctions.<sup>59</sup> Interestingly, mast cells may  
34 contribute to cutaneous microvascular hyperpermeability, as shown in an animal model of localized  
35 irradiation.<sup>58</sup> Fractionated RT has also been shown to increase vascular permeability, but not as a  
36 result of a lack of junction proteins. In contrast, ICAM-1 and Zo-1, which are involved in the  
37 endothelial barrier, are more expressed after fractionated RT.<sup>60,61</sup> It should be noted that  
38 microvascular permeability induced by fractionated RT seems to be more durable than that induced  
39 by single-dose RT.<sup>62,63</sup>  
40  
41  
42  
43  
44  
45

46 Endothelial tight junctions form the impermeable blood-brain barrier (BBB). In BBB models,  
47 microvascular permeability is increased in a dose-dependent manner after single-dose irradiation.<sup>64</sup>  
48 This increase is not directly explained by a change in tight junction protein expression or by basal  
49 lamina lesion, since the expressions of Zo-1 and the endothelial barrier antigen are not affected at  
50 doses below 20 Gy.<sup>64,65</sup> The increase in permeability could be explained by changes in the  
51 cytoskeleton of endothelial cells. In a clinical context of fractionated RT for the treatment of brain  
52 tumours, the radiation-induced disruption of the BBB has been widely demonstrated.<sup>66-68</sup>  
53  
54  
55  
56  
57

## 58 Radiotherapy and vascular changes in tumours



1 RT significantly affects the state and function of blood vessels. The severity of vascular damages  
2 depends on the RT protocol used, *i.e.* the number of fractions, the dose rate and the total dose of  
3 radiation applied.<sup>69</sup> In solid tumours, the overproduction of pro-angiogenic molecules in response to  
4 RT results in the dilatation of microvessels, the disruption of the endothelial lining, more branches,  
5 and overall a very irregular blood vessel architecture. At the cell level, the blood capillaries are  
6 incompletely matured, the perivascular cells are absent or detached, the basement membrane is  
7 absent or abnormally thick and endothelial cell junctions are absent. This impaired vascularization  
8 is associated with deregulation of tissue oxygenation which finally leads to hypoxic areas in the  
9 tumour. As a consequence, the lack of oxygen lowers the amount of radiation-induced ROS,  
10 ultimately leading to decreased RT efficiency.<sup>70</sup>

11 Observations that transplanting cancer cells into a previously irradiated site in mice resulted in  
12 slower growth of the subsequent tumour led to the concept of “tumour bed effect”,<sup>71</sup> especially  
13 following large doses of radiation (10 to 20 Gy and more). Suggestions were made that vascular  
14 damage could impact the ability to regrow after irradiation. More recently, it was demonstrated  
15 that microvascular damage, *i.e.* endothelial cell apoptosis, regulates the response of tumour cells  
16 to radiation at the clinically relevant dose range.<sup>72,73</sup> However, the involvement of endothelial cells  
17 in the tumour response remains controversial.<sup>74</sup> In SCID mice, in which the *scid* mutation  
18 radiosensitizes endothelial cells, tumour growth was not affected by radiation compared with wild-  
19 type mice, suggesting that the vasculature did not play a significant role in tumour response to  
20 radiation in this model.<sup>75</sup> Also, a specific deletion of *atm* in endothelial cells made them more  
21 sensitive to ionizing radiation in sarcomas,<sup>76</sup> but failed to enhance sarcoma eradication, unlike  
22 specific deletion of *atm* in tumour cells which increased sarcoma eradication.<sup>77</sup> These studies have  
23 strongly suggested that tumour cells, rather than endothelial cells, are critical targets for sarcoma  
24 eradication by RT delivered in high single dose, like doses delivered in stereotactic body radiation  
25 therapy (SBRT), although an enhanced growth delay was observed in the tumours with the more  
26 sensitive endothelial cells.

27 As a consequence of endothelial sensitivity to radiation, the irradiated tumour microenvironment  
28 (TME) undergoes changes in vasculature and oxygenation rates. For large single doses over 10 Gy,  
29 microvascular density is impaired at least in a transitory manner. The decrease in vessel density  
30 corresponds to an alteration of blood perfusion and to an increase in hypoxic zones as shown in  
31 different tumour models.<sup>78-81</sup> Nevertheless, for repeated doses, the radiation schedule seems to  
32 matter in a more important way. A vascular density reduction is also observed but is not  
33 systematically followed by an increase in tumour hypoxia. In a clinically relevant pattern of  
34 repeated doses from 2 to 15 Gy per fraction, the microvascular density reduction resembles vascular  
35 normalization rather than destruction. Unlike using large single doses, repeated RT leads to  
36 transitory or durable hypoxia reduction in pulmonary, prostate, and head and neck cancer  
37 models.<sup>78,80,82</sup>

38 On the other hand, fractionated RT impacts pericyte coverage of blood vessels and blood vessel  
39 functionality in the TME. Pericytes are helpful to stabilize microvessels and regulate their  
40 permeability in healthy tissues.<sup>83</sup> They are less frequent and more loosely associated with  
41  
42  
43  
44  
45  
46  
47  
48  
49  
50  
51  
52  
53  
54  
55  
56  
57  
58  
59  
60  
61  
62  
63  
64  
65

endothelial cells in tumours. Also, pericytes are involved in tumour hypoxia reduction<sup>84</sup> and cancer metastatic diffusion.<sup>85</sup> Interestingly, pericytes are also involved in transmigration and trafficking of immune cells into tumours.<sup>86</sup> Several studies show that after repeated doses from 2 to 12 Gy, pericyte coverage and blood perfusion are improved despite microvascular density reduction.<sup>61,78,80,87</sup> As a consequence, immune infiltrate and immunotherapy efficacy should be enhanced.<sup>88</sup> Tumour blood perfusion is likely multifactorial and dependent on the quality of blood supply as well as cell density and metabolism.<sup>89</sup> The consequences of single-dose RT on pericyte coverage remain unclear and deserve to be better known. After 12 Gy, pericyte coverage and perfusion decreases in a neuroblastoma model<sup>79</sup> and after 20 Gy in a fibrosarcoma model,<sup>81</sup> whereas it increases after 12 or 14 Gy in pulmonary tumour models.<sup>80,90</sup>

### Radiation-induced vascular changes in normal tissues

Endothelial apoptosis, increased vascular permeability, cell activation and recruitment of inflammatory cells as well as activation of the coagulation system<sup>91</sup> are all early phenomena contributing to the induction and progression of radiation-induced tissue damage. Late vascular lesions, such as fibrosis and luminal reduction, also generate areas of tissue hypoxia that contribute to and amplify radiation-induced healing.<sup>91</sup> On the morphological level, the vascular lesions are different depending on the size of the vessels. Microvasculature is considered to be the most radiosensitive part of the vasculature. Capillary ruptures and dilatations, hypertrophy and detachment of endothelial cells from the basal lamina as well as thrombosis are observed.<sup>91</sup> In the case of large vessels, it is very difficult to distinguish, at the morphological level, the vascular lesions of conventional atherosclerosis from radiation-induced vascular lesions. The latter are characterized by vascular fibrosis with luminal reductions, excessive extracellular matrix deposition in the media and adventitia, neointimal hyperplasia and thrombus formation.<sup>92</sup> The histological similarities between radiation-induced vascular lesions and atherosclerotic lesions suggest that similar initiation and progression mechanisms could be involved.<sup>93</sup> At the endothelial cell surface, thrombomodulin downregulation, observed very early after irradiation, persists chronically in both rats and humans.<sup>94-96</sup> The endothelium is in a chronic procoagulant state, which may contribute to the long-term persistence of deleterious effects of irradiation. The induction of ICAM-1 expression in irradiated endothelial cells and an increase in neutrophil adhesion are maintained more than ten days after irradiation, suggesting a pro-inflammatory endothelial cell phenotype that persists over time.<sup>97</sup> *In vivo* studies also suggest that vascular damage contributes to radiation-induced fibrosis. In a pulmonary radiation-induced fibrosis model in rats, significant hypoxia associated with severe fibrosis six months after irradiation could result from damage to endothelial cells, interstitial oedema and vascular dysfunction.<sup>98</sup> Recently, it has been shown that endothelial hypoxia-inducible factor (HIF)-1 $\alpha$  deletion confers resistance to radiation-induced enteritis, whereas similar deletion in intestinal epithelium does not, suggesting new functions of endothelial hypoxia-inducible factor-1 $\alpha$ -signalling pathways as mediators of mucosal inflammatory processes.<sup>99</sup> On the other hand, it has been demonstrated *in vivo* that the endothelium is directly involved in the progression of radiation-

1 induced enteritis by using a mouse model harbouring an endothelium-specific deletion of the *serpin*  
2 *1* gene, which encodes the plasminogen activator inhibitor-type 1 (PAI-1).<sup>100</sup>  
3

## 4 IMMUNOLOGICAL CONSEQUENCES OF RADIOTHERAPY

5  
6 RT has immune-inflammatory effects on both tumours and healthy tissues. **Figure 3** summarizes  
7 these effects, which are discussed below.  
8

### 9 Consequences in tumours and healthy tissues

10  
11 Radiation induces changes to the tumour cell immunophenotype and immunogenicity by damaging  
12 DNA and membranes, and by production of cytoplasmic ROS, which activate many transcription  
13 factors and signalling pathways.<sup>101</sup> RT promotes the presentation of tumour antigens by tumour cells  
14 by increasing the cell pool of specific antigens and by stimulating the expression of the major type 1  
15 histocompatibility complex (MHC class 1).<sup>102</sup> It also generates immunogenic cell death, i.e. the  
16 dispersion of immune-stimulating tumour antigens from dying cells into the surrounding milieu,<sup>103</sup>  
17 through the release of damage-associated molecular patterns (DAMPs).<sup>104,105</sup> The activated dendritic  
18 cells then present the tumour antigens to the naive T lymphocytes in the lymph nodes allowing the  
19 formation of cytotoxic T lymphocytes specific for the tumour antigen.<sup>106</sup> RT facilitates the  
20 recruitment of these effector T lymphocytes by generating the secretion of the chemokine CXCL16  
21 and endothelial expression of the cell adhesion ICAM-1, VCAM-1 and E-selectin.<sup>97,107</sup> These  
22 processes finally trigger an immune response, which is accompanied by a pro-inflammatory  
23 reaction, with release of IL-1, IL-2, IL-6, IL-12, interferon (INF)- $\alpha$  and IFN- $\beta$ , and TNF- $\alpha$ , which are  
24 involved in amplification of the anti-tumour immune response.<sup>105</sup>  
25  
26

27  
28 In normal tissues injured by radiation, release of DAMPs and secretion of cytokines and chemokines  
29 also activate the immune system. This phase moves to an acute inflammatory phase characterized  
30 by an activated pro-inflammatory response and vascular leakage. In this phase, the recruitment of  
31 diverse immune cells of myeloid and lymphoid origin, which is associated with a perpetual  
32 cytokine/chemokine cascade,<sup>108,109</sup> leads to various degrees of inflammation and symptoms.  
33 Lymphocyte subpopulations such as T<sub>H</sub>1, T<sub>H</sub>17, and possibly innate lymphoid cells, can contribute to  
34 inflammation, while T<sub>reg</sub> could be needed to control damaging and excessive pro-inflammatory  
35 responses. An excessive response, sustained by activation, proliferation of these cells and cytokine  
36 secretion can then shape the microenvironment of normal tissues towards the development of  
37 severe inflammation such as, for example, severe pneumonitis in the case of irradiation of the  
38 lung.<sup>110</sup> Mitotic cell death occurs later and can subsequently trigger tissue hypoxia leading to the  
39 release of DAMPs and cytokines/chemokines from resident cells thereby modifying the  
40 microenvironment in the tissue. These changes impact the tissue-resident immune cells that then  
41 release cytokines. Finally, epithelial-to-mesenchymal and endothelial-to-mesenchymal transitions,  
42 recently found to be induced by irradiation,<sup>111,112</sup> mesenchymal stem cell differentiation, and the  
43 altered microenvironment contribute to myofibroblast activation and collagen deposition, which  
44 ultimately leads to fibrosis.  
45  
46  
47  
48  
49  
50  
51  
52  
53  
54  
55  
56  
57  
58  
59  
60  
61  
62  
63  
64  
65

1 In irradiated normal tissues, the recruitment of immune cells has a dual effect. Resolution of  
2 inflammation and repair progression are concomitant with late mitotic cell death, which results  
3 from the initial damage, hypoxia and release of DAMPs, cytokines and growth factors, representing  
4 the chronic phase of radiation-induced injury of many normal tissues. These environmental changes  
5 may contribute to immunomodulation. For example, different populations of lymphocytes such as  
6 T<sub>H</sub>2, T<sub>H</sub>9, T<sub>reg</sub> and possibly innate lymphoid cells display both anti-inflammatory and pro-fibrotic  
7 effects, thereby potentially promoting the induction of pathologic myofibroblasts and fibrosis.<sup>110</sup> It  
8 is believed that lymphocytes play a complex role in radiation diseases in which, depending on the  
9 disease stage and the environmental conditions, specific subpopulations of lymphocytes could exert  
10 beneficial or adverse effects.<sup>110</sup> For instance, in the case of radiation-induced pulmonary fibrosis, a  
11 disturbed balance between tissue inflammation and repair processes, with an involvement of  
12 lymphocytes, may participate in the development of the syndrome as described for other fibrotic  
13 diseases.<sup>113</sup> A question is whether immune cells contribute directly to radiation diseases or only  
14 modulate disease progression. In addition, it is not yet established if innate lymphoid cells also  
15 contribute to radiation-induced late injuries. These questions have been nicely explored in several  
16 reviews that we recommend as further reading in the context of radiation-induced pulmonary acute  
17 and late effects.<sup>110,113,114</sup>

## 26 Influence of the adaptive immune response by the tumour endothelium in the 27 context of radiotherapy

30 Normal endothelial cells participate in adaptive immune responses by recruiting circulating T cells  
31 into inflamed tissues.<sup>115</sup> In contrast, tumour endothelial cells play a role in immune cell exclusion  
32 and inhibition of lymphocyte activation,<sup>116</sup> causing the development of intratumoral  
33 immunosuppression, which is involved in tumour escape from immunity and conventional cancer  
34 therapies.<sup>14,117</sup> Mechanisms underlying this dysfunction involve the absence or expression at low  
35 levels of ICAM-1, VCAM-1 and E-selectin on tumour vasculature, despite an inflammatory  
36 environment.<sup>118</sup> This lack of response to inflammatory stimuli, called endothelial anergy,<sup>119</sup> may be  
37 due at least in part to angiogenic factors such as vascular endothelial growth factor-A (VEGF-A),  
38 VEGF-C, VEGF-D and basic fibroblast growth factor (bFGF),<sup>120,121</sup> which are expressed in response to  
39 tissue hypoxia through activation of the HIF pathway. Therefore, approaches that improve the  
40 recruitment and activation of lymphocytes by tumour endothelial cells are being  
41 investigated.<sup>14,118,122</sup> On the other hand, RT is immunostimulatory and has the potential to enhance  
42 anti-tumour response by the immune system.<sup>123</sup> For instance, in this way, vascular normalization by  
43 VEGFR2 blockade has been shown to cause an increase in oxygenation able to govern brain tumour  
44 response to radiation by restoring anti-tumour T-cell activity.<sup>124</sup> Also, low doses of irradiation in the  
45 range of a fraction dose of conventional RT have been shown to cause aberrant vascular system  
46 normalization and efficient recruitment of tumour-specific T cells in human pancreatic carcinomas,  
47 as well as T-cell-induced rejection of tumours and prolonged survival in spontaneous and xenograft  
48 tumour models.<sup>125</sup> These effects were in part related to the suppression of the production of  
49 angiogenic, immunosuppressive and tumour growth factors such as VEGF. Lastly, RT increases the

1 expression of adhesion molecules on tumour endothelial cells, including ICAM-1, VCAM-1 and E-  
2 selectin,<sup>35,125-127</sup> which helps to normalize the tumour vasculature and makes it easier to infiltrate.

### 3 Radiation-induced abscopal effects and their cross-talk with vascular remodelling

4 Tumour regression may occur in lesions far from the radiation field of the tumour site by a systemic  
5 effect (abscopal effect).<sup>126</sup> This effect is currently being observed in clinics and could be the result  
6 of immunogenic cell death, which triggers tumour vaccination.<sup>127</sup> It requires efficient infiltration of  
7 the primary tumour by immune cells, subsequent extravasation of these cells so they can act away  
8 from the irradiated site, and ultimately infiltration of the secondary tumour by the educated  
9 immune cells. Many barriers, including the vascular barrier, prevent radiation-induced *in situ*  
10 tumour vaccination,<sup>128</sup> which explains why only a few distant responses in non-irradiated sites have  
11 been reported.<sup>129</sup> In solid tumours, poor vascularization may impair this process by decreasing  
12 leukocyte infiltration and effector function, otherwise leading to hypoxia, which can contribute to  
13 immune tolerance by regulating immunosuppressive cell populations.<sup>130-135</sup> On the other hand, RT  
14 induces a pro-inflammatory environment which can enhance lymphocyte infiltration and adaptive  
15 immune system activation by normalizing the vasculature.<sup>136</sup> This infiltration may be caused by  
16 upregulation of ICAM-1 correlated with RT.<sup>33</sup>

### 17 Alteration of microbiota following radiotherapy and its impact on vascular and 18 immune systems

19 The microbiome plays a critical role in the maintenance of vascular health and the development of  
20 vascular disease.<sup>137</sup> Changes in intestinal microbiota composition after RT have been reported in  
21 several studies.<sup>138</sup> The major changes were reduced diversity of Firmicutes and Bacteroidetes and  
22 increase of Proteobacteria. In a preclinical model of radiation proctitis, recent findings have  
23 demonstrated that local radiation treatment induces microbial dysbiosis.<sup>139</sup> Remarkably, this  
24 radiation-induced dysbiotic microbiota was able to transmit inflammatory susceptibility and to  
25 render germ-free recipient mice more susceptible to ionizing radiation through a host cytokine  
26 induction. Conversely, faecal microbiota transplantation from healthy mice to total body irradiated  
27 mice improved gastrointestinal tract function and epithelial integrity of the small intestine, and  
28 facilitated angiogenesis.<sup>140</sup> These two studies suggest that the microbiota may be manipulated to  
29 improve or prevent radiation-induced tissue damage.

30 Evidence suggests that interactions between the enteric microbiota and the innate immune system  
31 are important in modulating the response to radiation,<sup>141</sup> especially through triggering of innate  
32 immune receptors by the microbiota.<sup>142</sup> After exposure to ionizing radiation, the integrity of the  
33 intestinal barrier is decreased, allowing intestinal bacteria and their components (pathogen-  
34 associated molecular patterns, PAMPs) to translocate to the lamina propria where they are  
35 recognized by Toll-like receptors (TLRs) in host antigen-presenting cells (APCs).<sup>143,144</sup> Activated APCs  
36 then secrete proinflammatory cytokines and prime donor T cells. On the other hand, endothelial  
37 apoptosis has been shown to be lower in germ-free than in conventionally raised mice.<sup>145</sup> The  
38 microbiota-associated enhancement of endothelial radiosensitivity did not require mature  
39

lymphocytes since Rag1 knockout mice did not show differences in the development of lethal radiation enteropathy.<sup>145</sup>

Little is known about the effect of microbiota on the regulation of tumour response to RT.<sup>142</sup> Yet, recently, the influence of the gut microbiome composition on the response to anti-programmed cell death protein (PD)-1 immunotherapy in cancer patients was described in three outstanding articles.<sup>146-148</sup> These studies suggest that the microbiota should be considered when assessing therapeutic intervention. In the same way that the gut microbiota affects the immune response induced by immunogenic cell death in chemotherapy and immunotherapy,<sup>149-151</sup> it can therefore be assumed that the gut microbiota also plays a role in the immunostimulatory effects of RT.

## ENDOTHELIAL-ORIENTED STRATEGIES FOR THERAPEUTIC GAIN IN RADIATION ONCOLOGY

Endothelium-based strategies for therapeutic gain in radiation oncology attempt either to increase injuries in the tumour vascular system or to protect the vasculature of normal tissue from radiation injuries, or ideally both. Many studies have attempted to preserve the endothelial barrier of normal tissues by protecting endothelial cells from death, or by inhibiting vascular inflammation and endothelial cell activation. Apart from approaches that aim to radiosensitize tumours by directly targeting cancer cells, the manipulation of the TME based on the tumour vasculature and on the immune system has aroused great interest. The different endothelial-oriented strategies to improve RT are detailed below and illustrated in **Figure 4** for normal tissues and in **Figure 5** for tumours.

### Endothelial-oriented strategies to spare normal tissue

#### *Preventing endothelial cytotoxicity*

Among effective modifiers of radiation-induced endothelial cytotoxicity *in vivo* and *in vitro*, bFGF has generated great interest in the protection of endothelial cells from apoptosis.<sup>28,152,153</sup> Administration of bFGF increases the endothelial expression of thrombomodulin and is effective in reducing fibrosis, for instance within the urinary bladder.<sup>154</sup> Without going through bFGF, direct activation of the thrombomodulin-activated protein C (TM-APC) pathway has beneficial biological effects on the vasculature because of its anti-inflammatory, cytoprotective, antifibrinolytic, antioxidant and anticoagulant properties.<sup>155</sup> By using a pharmacological strategy to activate this pathway, mitigation of radiation toxicity was achieved in a relevant model of RT in which a loop of rat small bowel was exposed to nine daily doses of 5 Gy.<sup>156</sup> On the other hand, the targeting of CD47, a thrombospondin-1 receptor, has demonstrated that inhibiting CD47 signalling maintains the viability of normal tissues following irradiation, likely through radioprotection of endothelial cells, while increasing the radiosensitivity of tumours.<sup>157</sup> Also, an angiopoietin-1 mimic significantly reduces skin radiation toxicity, potentially by increasing survival and function of irradiated endothelial cells through tyrosine kinase with immunoglobulin and EGF homology domains 2 (Tie2) receptor activation.<sup>158</sup> In addition, the use of a ceramide-targeting antibody to prevent ceramide platform formation in endothelial cells protects against gastrointestinal syndrome.<sup>159</sup> Also, a

1 strategy that targets PAI-1 to prevent endothelial cell death has been proposed to mitigate the  
2 severity of intestinal radiation injury.<sup>160</sup> This work showed a promising temporary protection against  
3 early lethality in a mouse model of radiation-induced enteropathy.  
4

#### 5 *Decreasing coagulopathy*

6 A radiation-induced decrease in endothelial thrombomodulin-1 leads to an increase in thrombin,  
7 which results in activation of blood clotting. In liver, lung and heart, the lumen of central veins  
8 becomes blocked by fibrillar material resulting in obstruction of irradiated vessels with platelet  
9 aggregates.<sup>161</sup> Therefore, there has been great interest in modulating blood coagulation as a  
10 strategy to reduce radiation toxicity of normal tissue. Increased platelet adherence to irradiated  
11 endothelial monolayers can be blocked by anti-von Willebrand factor (vWF) antibodies.<sup>162</sup> The use of  
12 anticoagulants such as heparin has been investigated, but the results to date have been mostly  
13 insignificant and generally inconsistent.<sup>163</sup> In contrast, the TM-APC pathway is a hopeful target for  
14 preventing or treating radiation toxicity in normal tissues using strategies aimed at restoring or  
15 preserving endothelial TM or replacing PC.<sup>156,164,165</sup> Also, thrombin inhibition has been investigated  
16 as a strategy to minimize the side-effects of RT. The recombinant thrombin inhibitor hirudin has  
17 shown a protective effect against small bowel radiation toxicity in a model of localized small bowel  
18 radiation in rats.<sup>166</sup> However, the authors felt that targeting specific thrombin functions may be  
19 superior to global thrombin inhibition. On the other hand, the administration of the thrombin  
20 peptide TP508 has been shown to activate endothelial cells and stem cells to revascularize and  
21 regenerate tissues in a whole body irradiation model,<sup>167,168</sup> suggesting a possible use to limit RT side-  
22 effects.  
23  
24  
25  
26  
27  
28  
29  
30  
31

#### 32 *Targeting premature endothelial senescence*

33 Approaches to target endothelial cell senescence to prevent, mitigate and treat radiation-induced  
34 cardiovascular diseases are under investigation.<sup>31</sup> The different approaches rely on three main  
35 strategies: (i) preventing endothelial cells from becoming senescent using antioxidants to scavenge  
36 ROS<sup>169</sup> or inhibitors of the IGF1/PI3K/Akt/mTOR pathway that activate radiation-induced endothelial  
37 senescence;<sup>170</sup> (ii) suppression of SASP to prevent most of the deleterious effects of senescent  
38 cells,<sup>171</sup> for instance by using RNAi or JAK inhibitors to target the JAK pathway,<sup>172</sup> an upstream  
39 regulatory pathway of SASP; and (iii) clearing senescent endothelial cells with senolytic drugs to  
40 selectively kill senescent cells.<sup>173</sup> Clearance of senescent cells in mice by ABT263, a Bcl-2/xL-  
41 specific inhibitor, effectively cleared senescent cells in several tissues, including senescent bone  
42 marrow hematopoietic stem cells and muscle stem cells, and suppressed SASP in the lungs.<sup>174</sup>  
43 Nevertheless, inhibiting the induction of senescence could be detrimental by increasing  
44 tumorigenesis and decreasing tumour response to RT. Moreover, since senescent cells persist *in vivo*,  
45 their elimination or death may ultimately be worse with deleterious effects on the irradiated organ,  
46 despite their dysfunction and their key role in radiation-induced diseases, as discussed previously.<sup>175</sup>  
47  
48  
49  
50  
51  
52  
53  
54  
55  
56

#### 57 *Modulation of the immune-inflammatory response*

58 A number of studies suggest that the recruitment of immune cells may become detrimental to  
59 healthy tissues when chronic and unresolved,<sup>22</sup> and possibly participates in the initiation and/or the  
60  
61  
62  
63  
64  
65

1 development of acute and late adverse tissue effects in the course of RT. Thus, strategies that  
2 target normal tissue-associated endothelial cells would be of interest to impair their ability to  
3 recruit immune cells. In such a strategy, the question of the timing of the modulation should be  
4 explored in depth. Many studies have aimed to identify strategies to antagonize adhesion molecule  
5 function, by either preventing interactions with receptors or inhibiting NF- $\kappa$ B signalling, to limit the  
6 inflammatory response. Hitherto, no clinical strategy has emerged that controls inflammation by  
7 targeting expression of the NF- $\kappa$ B-dependent endothelial adhesion molecule. However, mechanisms  
8 independent of the NF- $\kappa$ B pathway may also regulate adhesion molecule function, including post-  
9 transcriptional regulation by IL-19<sup>176</sup> and post-translational modification by N-linked sugars.<sup>39</sup> Since  
10 leukocyte trafficking in inflammation is actually governed by protein-glycan interaction,<sup>19</sup>  
11 understanding of these complex interactions raises great hopes for the emergence of new  
12 therapeutic targets to treat inflammatory diseases such as atherosclerosis, intestinal bowel disease  
13 and thus also for radiation diseases.<sup>40</sup>

## 20 Endothelial-oriented strategies to target tumours

### 22 *Increasing injury to tumour vasculature*

24 The strategy of destroying the tumour vasculature has long been considered of interest in enhancing  
25 the potential of RT, although a poorly vascularized tumour may then prove to be more resistant to  
26 ionizing radiation due to lower oxygen content. Using anti-VEGF antibodies (bevacizumab), anti-  
27 angiogenic therapies have an antivasular effect in human tumours, but are still far from being  
28 effective in monotherapy.<sup>177</sup> On the other hand, the benefit of the combination of anti-angiogenic  
29 therapy with other conventional treatments such as RT or chemo-RT has been reported in numerous  
30 studies.<sup>177,178</sup> However, combined therapy was found to be associated with increased severe toxicity,  
31 indicating the need to improve timing and dose delivery in the future.<sup>178,179</sup> Radiation-induced  
32 damage to endothelial cells has been proposed to explain the therapeutic advantage of SBRT, but  
33 the targets that allow this enhanced therapeutic response are still the subject of debate.<sup>29</sup> In  
34 particular, the aforementioned study of Moding et al. reported cancer cells as primary targets of  
35 SBRT rather than endothelial cells.<sup>77</sup> In the same way, differences in the radiosensitivity of  
36 endothelial cells in the tumour and the normal tissues could explain the differential effect of flash-  
37 irradiation with a dose rate above 100 Gy/s.<sup>180,181</sup>

### 46 *Cancer immunotherapy*

48 The tumour immune response largely involves the vascular system, which allows the transport of  
49 immune cells to the tumour. Radiation facilitates the trafficking, homing and extravasation of  
50 effector cytotoxic CD8<sup>+</sup> T cells into the tumour, resulting in radiation-induced immunogenic cell  
51 death.<sup>182</sup> The complex reactions of the immune system in an irradiated TME are both  
52 immunostimulatory and immunosuppressive.<sup>104</sup> Immunostimulatory effects come from the  
53 recruitment of circulating immune cells due to the production of cytokines and other  
54 proinflammatory factors by the tumour and its microenvironment, antigen exposure and dendritic  
55 cell priming as well as activation of the endothelial cells present in the tumour. In contrast,  
56 tumours and their microenvironment contain immunosuppressive immune cells like tumour



1 associated macrophages (TAMs), which resemble the alternatively activated M2 macrophage, and  
2 T<sub>Reg</sub> cells that have immunosuppressive and tolerizing effects. If radiation-induced  
3 immunosuppressive effects could be overcome and immunostimulatory effects enhanced, or both,  
4 RT would promote strong responses against tumour cells. A strategy to improve the recruitment of  
5 immune cells in tumours to enhance tumour cell death would be to manipulate the tumour-  
6 associated endothelial cells. In this way, Wilson et al. have shown that the delivery of miR-103  
7 in tumour-bearing mice leads to decreased angiogenesis and tumour growth by radiosensitization of  
8 tumour cells.<sup>183</sup> Also, a strategy that consists in increasing the ability of endothelial cells to adhere  
9 to circulating cells would also allow immune infiltration of the tumours to promote tumour cell  
10 death. However, to date, the molecular targets and the molecules to test have yet to be discovered.

#### 15 *Combining immunotherapy, anti-angiogenic therapy and radiotherapy*

17 A therapeutic perspective might consider the combination of immune checkpoint inhibitors,  
18 angiogenic inhibitors and RT, although this warrants further investigation.<sup>184</sup> On the one hand, an  
19 immunotherapy-antiangiogenic combination has given promising results.<sup>185,186</sup> In such therapy, the  
20 immunostimulatory effects of inhibitors of immune checkpoint regulators, such as antibodies against  
21 PD-1 or its ligand PD-ligand 1 (PD-L1), or cytotoxic lymphocyte-associated antigen-4 (CTLA-4), are  
22 combined with antibodies against VEGF, or its receptor VEGFR, which have immunosuppressive  
23 properties through inhibition of dendritic cell maturation in addition to their angiogenic properties.  
24 On the other hand, as discussed previously, RT has immunosuppressive effects and can be combined  
25 with antiangiogenic therapy to increase efficacy. The combination of these three therapies is  
26 certainly an innovative approach with potential clinical benefits.

#### 33 *Opening the endothelium for drug delivery*

34 Local tumour irradiation ( $\geq 15$  Gy) has recently been shown to substantially improve the delivery of  
35 therapeutic nanoparticles in a preclinical study with a benefit in tumour control.<sup>187</sup> Interestingly,  
36 TAM, which can serve as a nanoparticle drug depot,<sup>188</sup> increased in the vicinity of the  
37 microvasculature after therapeutic priming of the TME by irradiation, which finally increased  
38 therapeutic nanoparticle delivery. In this model, radiation initiated a vascular burst of TAM  
39 extravasation through a cascade of changes to the tumour vasculature and microenvironment,  
40 leading to increased uptake of the drug in neighbouring tumour cells. Vessel thickening, tortuous  
41 vascular branching and perivascular TAM localization were induced by radiation, all of which helped  
42 to enhance vessel permeability, allowing selective therapeutic nanoparticle delivery through TAM  
43 and improving tumour killing. These findings show that TAM were beneficial for drug delivery and,  
44 since RT stimulates an increase in TAM relative to the tumour,<sup>125,187,189</sup> open new interesting  
45 perspectives for combined RT and therapeutic nanoparticle treatment with broad applicability.

53 Since the BBB can be disrupted by RT, the modulation of BBB permeability by SBRT has been  
54 proposed to enhance drug delivery to the brain.<sup>190</sup> For instance, the idea of combining the use of RT  
55 to open the BBB with intravenous injection of nanoparticles is an interesting new concept for the  
56 treatment of brain tumours. Nanoparticles are a potential tool in the treatment of cancer because  
57 of their low toxicity and their ability to increase vascular sensitivity to radiation.<sup>191</sup> They

1 significantly increase the DNA damage to blood vessels of the brain induced by ionizing radiation. It  
2 has therefore been proposed that low doses of irradiation could locally increase the response of  
3 endothelial cells and thereby increase the permeability of the BBB with limited toxicity. Given the  
4 increased accuracy of RT, it would theoretically be possible to disrupt the BBB in strategic locations  
5 in the tumour bed prior to the administration of chemotherapy to increase its distribution and  
6 efficacy. However, it is not known which dose or dose schedule will best achieve the desired results  
7 or when permeability peaks after RT.  
8  
9

## 10 11 CONCLUSIONS

12 In the light of current knowledge, the vascular endothelium can be considered as a principal  
13 checkpoint for radiation-induced inflammatory and immunity processes following radiation exposure  
14 in both normal tissues and tumours. The endothelium could therefore be an ideal target  
15 compartment for improving the therapeutic index of RT. Future studies should focus on endothelial  
16 molecular targets of both normal tissues and tumours, but with opposite objectives : in normal  
17 tissues, therapeutic strategies will aim to modulate immune-inflammatory cell entry, at times which  
18 will have to be precisely determined for each treatment, whereas in tumours, treatments  
19 associated with RT and other treatments will aim to open the endothelium barrier so as to enhance  
20 the immune response.  
21  
22  
23  
24  
25  
26

## 27 28 FUNDING

29 This work was supported by Electricity of France (Groupe Gestion Projet-Radioprotection), IRSN  
30 (ROSIRIS program), Fondation ARC, Ligue contre le cancer, and INCA (Institut National du Cancer,  
31 Programme d'Action Intégré de Recherche).  
32  
33  
34  
35

## 36 37 REFERENCES

- 38 1. Shrieve DC, Loeffler JS. Human radiation injury: Lippincott Williams & Wilkins, Philadelphia,  
39 2011.
- 40 2. Stone HB, McBride WH, Coleman CN. Modifying normal tissue damage postirradiation. Report  
41 of a workshop sponsored by the Radiation Research Program, National Cancer Institute,  
42 Bethesda, Maryland, September 6-8, 2000. *Radiat Res.* 2002; **157**: 204-23.
- 43 3. DeVita VT, Lawrence TS, Rosenberg SA. DeVita, Hellman, and Rosenberg's Cancer: Principles  
44 & Practice of Oncology: Wolters Kluwer Health/Lippincott Williams & Wilkins, 2011.
- 45 4. Moding EJ, Kastan MB, Kirsch DG. Strategies for optimizing the response of cancer and normal  
46 tissues to radiation. *Nat Rev Drug Discov.* 2013; **12**: 526-42.
- 47 5. Begg AC, Stewart FA, Vens C. Strategies to improve radiotherapy with targeted drugs. *Nat Rev*  
48 *Cancer.* 2011; **11**: 239-53.
- 49 6. Liauw SL, Connell PP, Weichselbaum RR. New paradigms and future challenges in radiation  
50 oncology: an update of biological targets and technology. *Sci Transl Med.* 2013; **5**: 173sr2.
- 51 7. Chung AS, Lee J, Ferrara N. Targeting the tumour vasculature: insights from physiological  
52 angiogenesis. *Nat Rev Cancer.* 2010; **10**: 505-14.  
53  
54  
55  
56  
57  
58  
59  
60  
61  
62  
63  
64  
65

- 1  
2  
3  
4  
5  
6  
7  
8  
9  
10  
11  
12  
13  
14  
15  
16  
17  
18  
19  
20  
21  
22  
23  
24  
25  
26  
27  
28  
29  
30  
31  
32  
33  
34  
35  
36  
37  
38  
39  
40  
41  
42  
43  
44  
45  
46  
47  
48  
49  
50  
51  
52  
53  
54  
55  
56  
57  
58  
59  
60  
61  
62  
63  
64  
65
8. Azimzadeh O, Sievert W, Sarioglu H, Merl-Pham J, Yentrapalli R, Bakshi MV, et al. Integrative proteomics and targeted transcriptomics analyses in cardiac endothelial cells unravel mechanisms of long-term radiation-induced vascular dysfunction. *J Proteome Res.* 2015; **14**: 1203-19.
9. Heinonen M, Guipaud O, Milliat F, Buard V, Micheau B, Tarlet G, et al. Detecting time periods of differential gene expression using Gaussian processes: an application to endothelial cells exposed to radiotherapy dose fraction. *Bioinformatics.* 2015; **31**: 728-35.
10. Francois A, Milliat F, Guipaud O, Benderitter M. Inflammation and immunity in radiation damage to the gut mucosa. *Biomed Res Int.* 2013; **2013**: 123241.
11. Gajewski TF, Schreiber H, Fu YX. Innate and adaptive immune cells in the tumor microenvironment. *Nat Immunol.* 2013; **14**: 1014-22.
12. Weninger W, Biro M, Jain R. Leukocyte migration in the interstitial space of non-lymphoid organs. *Nat Rev Immunol.* 2014; **14**: 232-46.
13. Ley K, Laudanna C, Cybulsky MI, Nourshargh S. Getting to the site of inflammation: the leukocyte adhesion cascade updated. *Nat Rev Immunol.* 2007; **7**: 678-89.
14. Mauge L, Terme M, Tartour E, Helley D. Control of the adaptive immune response by tumor vasculature. *Front Oncol.* 2014; **4**: 61.
15. Zitvogel L, Kroemer G. Subversion of anticancer immunosurveillance by radiotherapy. *Nat Immunol.* 2015; **16**: 1005-7.
16. Nourshargh S, Alon R. Leukocyte migration into inflamed tissues. *Immunity.* 2014; **41**: 694-707.
17. Granger DN, Senchenkova E. Inflammation and the Microcirculation. *Morgan & Claypool Life Sciences*; 2010.
18. Zarbock A, Ley K, McEver RP, Hidalgo A. Leukocyte ligands for endothelial selectins: specialized glycoconjugates that mediate rolling and signaling under flow. *Blood.* 2011; **118**: 6743-51.
19. Scott DW, Patel RP. Endothelial heterogeneity and adhesion molecules N-glycosylation: implications in leukocyte trafficking in inflammation. *Glycobiology.* 2013; **23**: 622-33.
20. Mulivor AW, Lipowsky HH. Role of glycocalyx in leukocyte-endothelial cell adhesion. *Am J Physiol Heart Circ Physiol.* 2002; **283**: H1282-91.
21. Henry CB, Duling BR. TNF-alpha increases entry of macromolecules into luminal endothelial cell glycocalyx. *Am J Physiol Heart Circ Physiol.* 2000; **279**: H2815-23.
22. Korpela E, Liu SK. Endothelial perturbations and therapeutic strategies in normal tissue radiation damage. *Radiat Oncol.* 2014; **9**: 266.
23. Milliat F, Francois A, Tamarat R, Benderitter M. [Role of endothelium in radiation-induced normal tissue damages]. *Ann Cardiol Angeiol (Paris).* 2008; **57**: 139-48.
24. Baselet B, Azimzadeh O, Erbeltinger N, Bakshi MV, Dettmering T, Janssen A, et al. Differential impact of single-dose Fe ion and X-ray irradiation on endothelial cell transcriptomic and proteomic responses. *Front Pharmacol.* 2017; **8**: 570.
25. Helm A, Lee R, Durante M, Ritter S. The Influence of C-Ions and X-rays on Human Umbilical Vein Endothelial Cells. *Front Oncol.* 2016; **6**: 5.

- 1  
2  
3  
4  
5  
6  
7  
8  
9  
10  
11  
12  
13  
14  
15  
16  
17  
18  
19  
20  
21  
22  
23  
24  
25  
26  
27  
28  
29  
30  
31  
32  
33  
34  
35  
36  
37  
38  
39  
40  
41  
42  
43  
44  
45  
46  
47  
48  
49  
50  
51  
52  
53  
54  
55  
56  
57  
58  
59  
60  
61  
62  
63  
64  
65
26. Eriksson D, Stigbrand T. Radiation-induced cell death mechanisms. *Tumour Biol.* 2010; **31**: 363-72.
27. Corre I, Niaudet C, Paris F. Plasma membrane signaling induced by ionizing radiation. *Mutat Res.* 2010; **704**: 61-7.
28. Paris F, Fuks Z, Kang A, Capodiec P, Juan G, Ehleiter D, et al. Endothelial apoptosis as the primary lesion initiating intestinal radiation damage in mice. *Science.* 2001; **293**: 293-7.
29. Karam SD, Bhatia S. The radiobiological targets of SBRT: tumor cells or endothelial cells? *Ann Transl Med.* 2015; **3**: 290.
30. Lafargue A, Degorre C, Corre I, Alves-Guerra MC, Gaugler MH, Vallette F, et al. Ionizing radiation induces long-term senescence in endothelial cells through mitochondrial respiratory complex II dysfunction and superoxide generation. *Free Radic Biol Med.* 2017; **108**: 750-59.
31. Wang Y, Boerma M, Zhou D. Ionizing radiation-induced endothelial cell senescence and cardiovascular diseases. *Radiat Res.* 2016; **186**: 153-61.
32. Liao JK. Linking endothelial dysfunction with endothelial cell activation. *J Clin Invest.* 2013; **123**: 540-1.
33. Heckmann M, Douwes K, Peter R, Degitz K. Vascular activation of adhesion molecule mRNA and cell surface expression by ionizing radiation. *Exp Cell Res.* 1998; **238**: 148-54.
34. Quarmby S, Kumar P, Wang J, Macro JA, Hutchinson JJ, Hunter RD, et al. Irradiation induces upregulation of CD31 in human endothelial cells. *Arterioscler Thromb Vasc Biol.* 1999; **19**: 588-97.
35. Quarmby S, Hunter RD, Kumar S. Irradiation induced expression of CD31, ICAM-1 and VCAM-1 in human microvascular endothelial cells. *Anticancer Res.* 2000; **20**: 3375-81.
36. Gaugler MH, Vereycken-Holler V, Squiban C, Aigueperse J. PECAM-1 (CD31) is required for interactions of platelets with endothelial cells after irradiation. *J Thromb Haemost.* 2004; **2**: 2020-6.
37. Mouthon MA, Vereycken-Holler V, Van der Meeren A, Gaugler MH. Irradiation increases the interactions of platelets with the endothelium in vivo: analysis by intravital microscopy. *Radiat Res.* 2003; **160**: 593-9.
38. Chacko BK, Scott DW, Chandler RT, Patel RP. Endothelial surface N-glycans mediate monocyte adhesion and are targets for anti-inflammatory effects of peroxisome proliferator-activated receptor gamma ligands. *J Biol Chem.* 2011; **286**: 38738-47.
39. Scott DW, Chen J, Chacko BK, Traylor JG, Jr., Orr AW, Patel RP. Role of endothelial N-glycan mannose residues in monocyte recruitment during atherogenesis. *Arterioscler Thromb Vasc Biol.* 2012; **32**: 51-9.
40. Jaillet C, Morelle W, Slomianny MC, Paget V, Tarlet G, Buard V, et al. Radiation-induced changes in the glycome of endothelial cells with functional consequences. *Sci Rep.* 2017; **7**: 5290.
41. Molla M, Gironella M, Miquel R, Tovar V, Engel P, Biete A, et al. Relative roles of ICAM-1 and VCAM-1 in the pathogenesis of experimental radiation-induced intestinal inflammation. *Int J Radiat Oncol Biol Phys.* 2003; **57**: 264-73.

- 1  
2  
3  
4  
5  
6  
7  
8  
9  
10  
11  
12  
13  
14  
15  
16  
17  
18  
19  
20  
21  
22  
23  
24  
25  
26  
27  
28  
29  
30  
31  
32  
33  
34  
35  
36  
37  
38  
39  
40  
41  
42  
43  
44  
45  
46  
47  
48  
49  
50  
51  
52  
53  
54  
55  
56  
57  
58  
59  
60  
61  
62  
63  
64  
65
42. Hallahan DE, Virudachalam S. Intercellular adhesion molecule 1 knockout abrogates radiation induced pulmonary inflammation. *Proc Natl Acad Sci U S A*. 1997; **94**: 6432-7.
  43. Halle M, Ekstrom M, Farnebo F, Tornvall P. Endothelial activation with prothrombotic response in irradiated microvascular recipient veins. *J Plast Reconstr Aesthet Surg*. 2010; **63**: 1910-6.
  44. Halle M, Gabrielsen A, Paulsson-Berne G, Gahm C, Agardh HE, Farnebo F, et al. Sustained inflammation due to nuclear factor-kappa B activation in irradiated human arteries. *J Am Coll Cardiol*. 2010; **55**: 1227-36.
  45. Halle M, Hall P, Tornvall P. Cardiovascular disease associated with radiotherapy: activation of nuclear factor kappa-B. *J Intern Med*. 2011; **269**: 469-77.
  46. Halle M, Tornvall P. Beyond nuclear factor kappaB in cardiovascular disease induced by radiotherapy. *J Intern Med*. 2011; **270**: 486.
  47. Yanez-Mo M, Siljander PR, Andreu Z, Zavec AB, Borrás FE, Buzas EI, et al. Biological properties of extracellular vesicles and their physiological functions. *J Extracell Vesicles*. 2015; **4**: 27066.
  48. van Niel G, D'Angelo G, Raposo G. Shedding light on the cell biology of extracellular vesicles. *Nat Rev Mol Cell Biol*. 2018.
  49. Hromada C, Muhleder S, Grillari J, Redl H, Holnthoner W. Endothelial extracellular vesicles-promises and challenges. *Front Physiol*. 2017; **8**: 275.
  50. Xu S, Wang J, Ding N, Hu W, Zhang X, Wang B, et al. Exosome-mediated microRNA transfer plays a role in radiation-induced bystander effect. *RNA Biol*. 2015; **12**: 1355-63.
  51. Albanese J, Dainiak N. Modulation of intercellular communication mediated at the cell surface and on extracellular, plasma membrane-derived vesicles by ionizing radiation. *Exp Hematol*. 2003; **31**: 455-64.
  52. Jella KK, Rani S, O'Driscoll L, McClean B, Byrne HJ, Lyng FM. Exosomes are involved in mediating radiation induced bystander signaling in human keratinocyte cells. *Radiat Res*. 2014; **181**: 138-45.
  53. Al-Mayah AH, Irons SL, Pink RC, Carter DR, Kadhim MA. Possible role of exosomes containing RNA in mediating nontargeted effect of ionizing radiation. *Radiat Res*. 2012; **177**: 539-45.
  54. Al-Mayah A, Bright S, Chapman K, Irons S, Luo P, Carter D, et al. The non-targeted effects of radiation are perpetuated by exosomes. *Mutat Res*. 2015; **772**: 38-45.
  55. Szotowski B, Antoniuk S, Goldin-Lang P, Tran QV, Pels K, Rosenthal P, et al. Antioxidative treatment inhibits the release of thrombogenic tissue factor from irradiation- and cytokine-induced endothelial cells. *Cardiovasc Res*. 2007; **73**: 806-12.
  56. Dignat-George F, Boulanger CM. The many faces of endothelial microparticles. *Arterioscler Thromb Vasc Biol*. 2011; **31**: 27-33.
  57. Krishnan EC, Krishnan L, Jewell B, Bhatia P, Jewell WR. Dose-dependent radiation effect on microvasculature and repair. *J Natl Cancer Inst*. 1987; **79**: 1321-5.
  58. Park KR, Monsky WL, Lee CG, Song CH, Kim DH, Jain RK, et al. Mast Cells Contribute to Radiation-Induced Vascular Hyperpermeability. *Radiat Res*. 2016; **185**: 182-9.

- 1  
2  
3  
4  
5  
6  
7  
8  
9  
10  
11  
12  
13  
14  
15  
16  
17  
18  
19  
20  
21  
22  
23  
24  
25  
26  
27  
28  
29  
30  
31  
32  
33  
34  
35  
36  
37  
38  
39  
40  
41  
42  
43  
44  
45  
46  
47  
48  
49  
50  
51  
52  
53  
54  
55  
56  
57  
58  
59  
60  
61  
62  
63  
64  
65
59. Gabrys D, Greco O, Patel G, Prise KM, Tozer GM, Kanthou C. Radiation effects on the cytoskeleton of endothelial cells and endothelial monolayer permeability. *Int J Radiat Oncol Biol Phys.* 2007; **69**: 1553-62.
  60. Cervelli T, Panetta D, Navarra T, Andreassi MG, Basta G, Galli A, et al. Effects of single and fractionated low-dose irradiation on vascular endothelial cells. *Atherosclerosis.* 2014; **235**: 510-8.
  61. Potiron VA, Abderrahmani R, Clement-Colmou K, Marionneau-Lambot S, Oullier T, Paris F, et al. Improved functionality of the vasculature during conventionally fractionated radiation therapy of prostate cancer. *PLoS One.* 2013; **8**: e84076.
  62. Burrell K, Hill RP, Zadeh G. High-resolution in-vivo analysis of normal brain response to cranial irradiation. *PLoS One.* 2012; **7**: e38366.
  63. Ceelen W, Smeets P, Backes W, Van Damme N, Boterberg T, Demetter P, et al. Noninvasive monitoring of radiotherapy-induced microvascular changes using dynamic contrast enhanced magnetic resonance imaging (DCE-MRI) in a colorectal tumor model. *Int J Radiat Oncol Biol Phys.* 2006; **64**: 1188-96.
  64. Fauquette W, Amourette C, Dehouck MP, Diserbo M. Radiation-induced blood-brain barrier damages: an in vitro study. *Brain Res.* 2012; **1433**: 114-26.
  65. Li YQ, Chen P, Jain V, Reilly RM, Wong CS. Early radiation-induced endothelial cell loss and blood-spinal cord barrier breakdown in the rat spinal cord. *Radiat Res.* 2004; **161**: 143-52.
  66. Debbage PL, Seidl S, Kreczy A, Hutzler P, Pavelka M, Lukas P. Vascular permeability and hyperpermeability in a murine adenocarcinoma after fractionated radiotherapy: an ultrastructural tracer study. *Histochem Cell Biol.* 2000; **114**: 259-75.
  67. Lee WH, Warrington JP, Sonntag WE, Lee YW. Irradiation alters MMP-2/TIMP-2 system and collagen type IV degradation in brain. *Int J Radiat Oncol Biol Phys.* 2012; **82**: 1559-66.
  68. van Vulpen M, Kal HB, Taphoorn MJ, El-Sharouni SY. Changes in blood-brain barrier permeability induced by radiotherapy: implications for timing of chemotherapy? (Review). *Oncol Rep.* 2002; **9**: 683-8.
  69. Park HJ, Griffin RJ, Hui S, Levitt SH, Song CW. Radiation-induced vascular damage in tumors: implications of vascular damage in ablative hypofractionated radiotherapy (SBRT and SRS). *Radiat Res.* 2012; **177**: 311-27.
  70. Bristow RG, Hill RP. Hypoxia and metabolism. Hypoxia, DNA repair and genetic instability. *Nat Rev Cancer.* 2008; **8**: 180-92.
  71. Milas L, Hunter N, Peters LJ. The tumor bed effect: dependence of tumor take, growth rate, and metastasis on the time interval between irradiation and tumor cell transplantation. *Int J Radiat Oncol Biol Phys.* 1987; **13**: 379-83.
  72. Garcia-Barros M, Paris F, Cordon-Cardo C, Lyden D, Rafii S, Haimovitz-Friedman A, et al. Tumor response to radiotherapy regulated by endothelial cell apoptosis. *Science.* 2003; **300**: 1155-9.
  73. Kolesnick R, Fuks Z. Radiation and ceramide-induced apoptosis. *Oncogene.* 2003; **22**: 5897-906.

- 1  
2  
3  
4  
5  
6  
7  
8  
9  
10  
11  
12  
13  
14  
15  
16  
17  
18  
19  
20  
21  
22  
23  
24  
25  
26  
27  
28  
29  
30  
31  
32  
33  
34  
35  
36  
37  
38  
39  
40  
41  
42  
43  
44  
45  
46  
47  
48  
49  
50  
51  
52  
53  
54  
55  
56  
57  
58  
59  
60  
61  
62  
63  
64  
65
74. Hill RP. The changing paradigm of tumour response to irradiation. *Br J Radiol.* 2017; **90**: 20160474.
  75. Budach W, Taghian A, Freeman J, Gioioso D, Suit HD. Impact of stromal sensitivity on radiation response of tumors. *J Natl Cancer Inst.* 1993; **85**: 988-93.
  76. Moding EJ, Lee CL, Castle KD, Oh P, Mao L, Zha S, et al. Atm deletion with dual recombinase technology preferentially radiosensitizes tumor endothelium. *J Clin Invest.* 2014; **124**: 3325-38.
  77. Moding EJ, Castle KD, Perez BA, Oh P, Min HD, Norris H, et al. Tumor cells, but not endothelial cells, mediate eradication of primary sarcomas by stereotactic body radiation therapy. *Sci Transl Med.* 2015; **7**: 278ra34.
  78. Chen FH, Chiang CS, Wang CC, Tsai CS, Jung SM, Lee CC, et al. Radiotherapy decreases vascular density and causes hypoxia with macrophage aggregation in TRAMP-C1 prostate tumors. *Clin Cancer Res.* 2009; **15**: 1721-9.
  79. Jani A, Shaikh F, Barton S, Willis C, Banerjee D, Mitchell J, et al. High-dose, single-fraction irradiation rapidly reduces tumor vasculature and perfusion in a xenograft model of neuroblastoma. *Int J Radiat Oncol Biol Phys.* 2016; **94**: 1173-80.
  80. Lan J, Wan XL, Deng L, Xue JX, Wang LS, Meng MB, et al. Ablative hypofractionated radiotherapy normalizes tumor vasculature in lewis lung carcinoma mice model. *Radiat Res.* 2013; **179**: 458-64.
  81. Song C, Hong BJ, Bok S, Lee CJ, Kim YE, Jeon SR, et al. Real-time tumor oxygenation changes after single high-dose radiation therapy in orthotopic and subcutaneous lung cancer in mice: clinical implication for stereotactic ablative radiation therapy schedule optimization. *Int J Radiat Oncol Biol Phys.* 2016; **95**: 1022-31.
  82. Hu F, Vishwanath K, Salama JK, Erkanli A, Peterson B, Oleson JR, et al. Oxygen and perfusion kinetics in response to fractionated radiation therapy in FaDu xenografts head and neck cancer xenografts are related to treatment outcome. *Int J Radiat Oncol Biol Phys.* 2016; **96**: 462-69.
  83. Armulik A, Genove G, Betsholtz C. Pericytes: developmental, physiological, and pathological perspectives, problems, and promises. *Dev Cell.* 2011; **21**: 193-215.
  84. Cooke VG, LeBleu VS, Keskin D, Khan Z, O'Connell JT, Teng Y, et al. Pericyte depletion results in hypoxia-associated epithelial-to-mesenchymal transition and metastasis mediated by met signaling pathway. *Cancer Cell.* 2012; **21**: 66-81.
  85. Kim J, de Sampaio PC, Lundy DM, Peng Q, Evans KW, Sugimoto H, et al. Heterogeneous perivascular cell coverage affects breast cancer metastasis and response to chemotherapy. *JCI Insight.* 2016; **1**: e90733.
  86. Hamzah J, Jugold M, Kiessling F, Rigby P, Manzur M, Marti HH, et al. Vascular normalization in Rgs5-deficient tumours promotes immune destruction. *Nature.* 2008; **453**: 410-4.
  87. Kane JL, Krueger SA, Hanna A, Raffel TR, Wilson GD, Madlambayan GJ, et al. Effect of irradiation on tumor microenvironment and bone marrow cell migration in a preclinical tumor model. *Int J Radiat Oncol Biol Phys.* 2016; **96**: 170-8.

- 1  
2  
3  
4  
5  
6  
7  
8  
9  
10  
11  
12  
13  
14  
15  
16  
17  
18  
19  
20  
21  
22  
23  
24  
25  
26  
27  
28  
29  
30  
31  
32  
33  
34  
35  
36  
37  
38  
39  
40  
41  
42  
43  
44  
45  
46  
47  
48  
49  
50  
51  
52  
53  
54  
55  
56  
57  
58  
59  
60  
61  
62  
63  
64  
65
88. Huang Y, Goel S, Duda DG, Fukumura D, Jain RK. Vascular normalization as an emerging strategy to enhance cancer immunotherapy. *Cancer Res.* 2013; **73**: 2943-8.
  89. Vaupel P, Kallinowski F, Okunieff P. Blood flow, oxygen and nutrient supply, and metabolic microenvironment of human tumors: a review. *Cancer Res.* 1989; **49**: 6449-65.
  90. Wang HH, Cui YL, Zaorsky NG, Lan J, Deng L, Zeng XL, et al. Mesenchymal stem cells generate pericytes to promote tumor recurrence via vasculogenesis after stereotactic body radiation therapy. *Cancer Lett.* 2016; **375**: 349-59.
  91. Fajardo LF. The pathology of ionizing radiation as defined by morphologic patterns. *Acta Oncol.* 2005; **44**: 13-22.
  92. Stewart FA, Heeneman S, Te Poele J, Kruse J, Russell NS, Gijbels M, et al. Ionizing radiation accelerates the development of atherosclerotic lesions in ApoE<sup>-/-</sup> mice and predisposes to an inflammatory plaque phenotype prone to hemorrhage. *Am J Pathol.* 2006; **168**: 649-58.
  93. Borghini A, Gianicolo EA, Picano E, Andreassi MG. Ionizing radiation and atherosclerosis: current knowledge and future challenges. *Atherosclerosis.* 2013; **230**: 40-7.
  94. Richter KK, Fink LM, Hughes BM, Sung CC, Hauer-Jensen M. Is the loss of endothelial thrombomodulin involved in the mechanism of chronicity in late radiation enteropathy? *Radiother Oncol.* 1997; **44**: 65-71.
  95. Richter KK, Fink LM, Hughes BM, Shmaysani HM, Sung CC, Hauer-Jensen M. Differential effect of radiation on endothelial cell function in rectal cancer and normal rectum. *Am J Surg.* 1998; **176**: 642-7.
  96. Wang J, Zheng H, Ou X, Fink LM, Hauer-Jensen M. Deficiency of microvascular thrombomodulin and up-regulation of protease-activated receptor-1 in irradiated rat intestine: possible link between endothelial dysfunction and chronic radiation fibrosis. *Am J Pathol.* 2002; **160**: 2063-72.
  97. Gaugler MH, Squiban C, van der Meeren A, Bertho JM, Vandamme M, Mouthon MA. Late and persistent up-regulation of intercellular adhesion molecule-1 (ICAM-1) expression by ionizing radiation in human endothelial cells in vitro. *Int J Radiat Biol.* 1997; **72**: 201-9.
  98. Vujaskovic Z, Anscher MS, Feng QF, Rabbani ZN, Amin K, Samulski TS, et al. Radiation-induced hypoxia may perpetuate late normal tissue injury. *Int J Radiat Oncol Biol Phys.* 2001; **50**: 851-5.
  99. Toullec A, Buard V, Rannou E, Tarlet G, Guipaud O, Robine S, et al. HIF-1 $\alpha$  deletion in the endothelium, but not in the epithelium, protects from radiation-induced enteritis. *Cell Mol Gastroenterol Hepatol.* 2018; **5**: 15-30.
  100. Rannou E, Francois A, Toullec A, Guipaud O, Buard V, Tarlet G, et al. In vivo evidence for an endothelium-dependent mechanism in radiation-induced normal tissue injury. *Sci Rep.* 2015; **5**: 15738.
  101. Sharabi AB, Lim M, DeWeese TL, Drake CG. Radiation and checkpoint blockade immunotherapy: radiosensitisation and potential mechanisms of synergy. *Lancet Oncol.* 2015; **16**: e498-509.



- 1  
2  
3  
4  
5  
6  
7  
8  
9  
10  
11  
12  
13  
14  
15  
16  
17  
18  
19  
20  
21  
22  
23  
24  
25  
26  
27  
28  
29  
30  
31  
32  
33  
34  
35  
36  
37  
38  
39  
40  
41  
42  
43  
44  
45  
46  
47  
48  
49  
50  
51  
52  
53  
54  
55  
56  
57  
58  
59  
60  
61  
62  
63  
64  
65
102. Reits EA, Hodge JW, Herberts CA, Groothuis TA, Chakraborty M, Wansley EK, et al. Radiation modulates the peptide repertoire, enhances MHC class I expression, and induces successful antitumor immunotherapy. *J Exp Med.* 2006; **203**: 1259-71.
  103. Golden EB, Apetoh L. Radiotherapy and immunogenic cell death. *Semin Radiat Oncol.* 2015; **25**: 11-7.
  104. Barker HE, Paget JT, Khan AA, Harrington KJ. The tumour microenvironment after radiotherapy: mechanisms of resistance and recurrence. *Nat Rev Cancer.* 2015; **15**: 409-25.
  105. Schaeue D, McBride WH. Links between innate immunity and normal tissue radiobiology. *Radiat Res.* 2010; **173**: 406-17.
  106. Demaria S, Formenti SC. Role of T lymphocytes in tumor response to radiotherapy. *Front Oncol.* 2012; **2**: 95.
  107. Matsumura S, Wang B, Kawashima N, Braunstein S, Badura M, Cameron TO, et al. Radiation-induced CXCL16 release by breast cancer cells attracts effector T cells. *J Immunol.* 2008; **181**: 3099-107.
  108. Rubin P, Johnston CJ, Williams JP, McDonald S, Finkelstein JN. A perpetual cascade of cytokines postirradiation leads to pulmonary fibrosis. *Int J Radiat Oncol Biol Phys.* 1995; **33**: 99-109.
  109. Schaeue D, Kachikwu EL, McBride WH. Cytokines in radiobiological responses: a review. *Radiat Res.* 2012; **178**: 505-23.
  110. Wirsdorfer F, Jendrossek V. The role of lymphocytes in radiotherapy-induced adverse late effects in the lung. *Front Immunol.* 2016; **7**: 591.
  111. Mintet E, Lavigne J, Paget V, Tarlet G, Buard V, Guipaud O, et al. Endothelial Hey2 deletion reduces endothelial-to-mesenchymal transition and mitigates radiation proctitis in mice. *Sci Rep.* 2017; **7**: 4933.
  112. Mintet E, Rannou E, Buard V, West G, Guipaud O, Tarlet G, et al. Identification of Endothelial-to-Mesenchymal Transition as a Potential Participant in Radiation Proctitis. *Am J Pathol.* 2015; **185**: 2550-62.
  113. Todd NW, Luzina IG, Atamas SP. Molecular and cellular mechanisms of pulmonary fibrosis. *Fibrogenesis Tissue Repair.* 2012; **5**: 11.
  114. Schaeue D, McBride WH. T lymphocytes and normal tissue responses to radiation. *Front Oncol.* 2012; **2**: 119.
  115. Pober JS, Tellides G. Participation of blood vessel cells in human adaptive immune responses. *Trends Immunol.* 2012; **33**: 49-57.
  116. Ganss R, Hanahan D. Tumor microenvironment can restrict the effectiveness of activated antitumor lymphocytes. *Cancer Res.* 1998; **58**: 4673-81.
  117. Uldry E, Faes S, Demartines N, Dormond O. Fine-tuning tumor endothelial cells to selectively kill cancer. *Int J Mol Sci.* 2017; **18**.
  118. Hendry SA, Farnsworth RH, Solomon B, Achen MG, Stacker SA, Fox SB. The role of the tumor vasculature in the host immune response: implications for therapeutic strategies targeting the tumor microenvironment. *Front Immunol.* 2016; **7**: 621.

- 1  
2  
3  
4  
5  
6  
7  
8  
9  
10  
11  
12  
13  
14  
15  
16  
17  
18  
19  
20  
21  
22  
23  
24  
25  
26  
27  
28  
29  
30  
31  
32  
33  
34  
35  
36  
37  
38  
39  
40  
41  
42  
43  
44  
45  
46  
47  
48  
49  
50  
51  
52  
53  
54  
55  
56  
57  
58  
59  
60  
61  
62  
63  
64  
65
119. Griffioen AW, Damen CA, Blijham GH, Groenewegen G. Tumor angiogenesis is accompanied by a decreased inflammatory response of tumor-associated endothelium. *Blood*. 1996; **88**: 667-73.
  120. Dirkx AE, Oude Egbrink MG, Kuijpers MJ, van der Niet ST, Heijnen VV, Bouma-ter Steege JC, et al. Tumor angiogenesis modulates leukocyte-vessel wall interactions in vivo by reducing endothelial adhesion molecule expression. *Cancer Res*. 2003; **63**: 2322-9.
  121. Griffioen AW, Damen CA, Martinotti S, Blijham GH, Groenewegen G. Endothelial intercellular adhesion molecule-1 expression is suppressed in human malignancies: the role of angiogenic factors. *Cancer Res*. 1996; **56**: 1111-17.
  122. Lanitis E, Irving M, Coukos G. Targeting the tumor vasculature to enhance T cell activity. *Curr Opin Immunol*. 2015; **33**: 55-63.
  123. Herrera FG, Bourhis J, Coukos G. Radiotherapy combination opportunities leveraging immunity for the next oncology practice. *CA Cancer J Clin*. 2017; **67**: 65-85.
  124. Winkler F, Kozin SV, Tong RT, Chae SS, Booth MF, Garkavtsev I, et al. Kinetics of vascular normalization by VEGFR2 blockade governs brain tumor response to radiation: role of oxygenation, angiopoietin-1, and matrix metalloproteinases. *Cancer Cell*. 2004; **6**: 553-63.
  125. Klug F, Prakash H, Huber PE, Seibel T, Bender N, Halama N, et al. Low-dose irradiation programs macrophage differentiation to an iNOS(+)/M1 phenotype that orchestrates effective T cell immunotherapy. *Cancer Cell*. 2013; **24**: 589-602.
  126. Formenti SC, Demaria S. Systemic effects of local radiotherapy. *Lancet Oncol*. 2009; **10**: 718-26.
  127. Ma Y, Kepp O, Ghiringhelli F, Apetoh L, Aymeric L, Locher C, et al. Chemotherapy and radiotherapy: cryptic anticancer vaccines. *Semin Immunol*. 2010; **22**: 113-24.
  128. Wennerberg E, Lhuillier C, Vanpouille-Box C, Pilonis KA, Garcia-Martinez E, Rudqvist NP, et al. Barriers to radiation-induced in situ tumor vaccination. *Front Immunol*. 2017; **8**: 229.
  129. Reynders K, Illidge T, Siva S, Chang JY, De Ruyscher D. The abscopal effect of local radiotherapy: using immunotherapy to make a rare event clinically relevant. *Cancer Treat Rev*. 2015; **41**: 503-10.
  130. Sceneay J, Chow MT, Chen A, Halse HM, Wong CS, Andrews DM, et al. Primary tumor hypoxia recruits CD11b+/Ly6Cmed/Ly6G+ immune suppressor cells and compromises NK cell cytotoxicity in the premetastatic niche. *Cancer Res*. 2012; **72**: 3906-11.
  131. Corzo CA, Condamine T, Lu L, Cotter MJ, Youn JI, Cheng P, et al. HIF-1alpha regulates function and differentiation of myeloid-derived suppressor cells in the tumor microenvironment. *J Exp Med*. 2010; **207**: 2439-53.
  132. Laoui D, Van Overmeire E, Di Conza G, Aldeni C, Keirsse J, Morias Y, et al. Tumor hypoxia does not drive differentiation of tumor-associated macrophages but rather fine-tunes the M2-like macrophage population. *Cancer Res*. 2014; **74**: 24-30.
  133. Doedens AL, Stockmann C, Rubinstein MP, Liao D, Zhang N, DeNardo DG, et al. Macrophage expression of hypoxia-inducible factor-1 alpha suppresses T-cell function and promotes tumor progression. *Cancer Res*. 2010; **70**: 7465-75.

- 1  
2  
3  
4  
5  
6  
7  
8  
9  
10  
11  
12  
13  
14  
15  
16  
17  
18  
19  
20  
21  
22  
23  
24  
25  
26  
27  
28  
29  
30  
31  
32  
33  
34  
35  
36  
37  
38  
39  
40  
41  
42  
43  
44  
45  
46  
47  
48  
49  
50  
51  
52  
53  
54  
55  
56  
57  
58  
59  
60  
61  
62  
63  
64  
65
134. Facciabene A, Peng X, Hagemann IS, Balint K, Barchetti A, Wang LP, et al. Tumour hypoxia promotes tolerance and angiogenesis via CCL28 and T(reg) cells. *Nature*. 2011; **475**: 226-30.
  135. Noman MZ, Desantis G, Janji B, Hasmim M, Karray S, Dessen P, et al. PD-L1 is a novel direct target of HIF-1alpha, and its blockade under hypoxia enhanced MDSC-mediated T cell activation. *J Exp Med*. 2014; **211**: 781-90.
  136. Ganss R, Ryschich E, Klar E, Arnold B, Hammerling GJ. Combination of T-cell therapy and trigger of inflammation induces remodeling of the vasculature and tumor eradication. *Cancer Res*. 2002; **62**: 1462-70.
  137. Kinlay S, Michel T, Leopold JA. The future of vascular biology and medicine. *Circulation*. 2016; **133**: 2603-9.
  138. Ferreira MR, Muls A, Dearnaley DP, Andreyev HJ. Microbiota and radiation-induced bowel toxicity: lessons from inflammatory bowel disease for the radiation oncologist. *Lancet Oncol*. 2014; **15**: e139-47.
  139. Gerassy-Vainberg S, Blatt A, Danin-Poleg Y, Gershovich K, Sabo E, Nevelsky A, et al. Radiation induces proinflammatory dysbiosis: transmission of inflammatory susceptibility by host cytokine induction. *Gut*. 2018; **67**: 97-107.
  140. Cui M, Xiao H, Li Y, Zhou L, Zhao S, Luo D, et al. Faecal microbiota transplantation protects against radiation-induced toxicity. *EMBO Mol Med*. 2017; **9**: 448-61.
  141. Packey CD, Ciorba MA. Microbial influences on the small intestinal response to radiation injury. *Curr Opin Gastroenterol*. 2010; **26**: 88-94.
  142. Roy S, Trinchieri G. Microbiota: a key orchestrator of cancer therapy. *Nat Rev Cancer*. 2017; **17**: 271-85.
  143. Chen Y, Zhao Y, Cheng Q, Wu D, Liu H. The role of intestinal microbiota in acute graft-versus-host disease. *J Immunol Res*. 2015; **2015**: 145859.
  144. Ratikan JA, Micewicz ED, Xie MW, Schae D. Radiation takes its Toll. *Cancer Lett*. 2015; **368**: 238-45.
  145. Crawford PA, Gordon JI. Microbial regulation of intestinal radiosensitivity. *Proc Natl Acad Sci U S A*. 2005; **102**: 13254-9.
  146. Matson V, Fessler J, Bao R, Chongsuwat T, Zha Y, Alegre ML, et al. The commensal microbiome is associated with anti-PD-1 efficacy in metastatic melanoma patients. *Science*. 2018; **359**: 104-08.
  147. Gopalakrishnan V, Spencer CN, Nezi L, Reuben A, Andrews MC, Karpinets TV, et al. Gut microbiome modulates response to anti-PD-1 immunotherapy in melanoma patients. *Science*. 2018; **359**: 97-103.
  148. Routy B, Le Chatelier E, Derosa L, Duong CPM, Alou MT, Daillere R, et al. Gut microbiome influences efficacy of PD-1-based immunotherapy against epithelial tumors. *Science*. 2018; **359**: 91-97.
  149. Iida N, Dzutsev A, Stewart CA, Smith L, Bouladoux N, Weingarten RA, et al. Commensal bacteria control cancer response to therapy by modulating the tumor microenvironment. *Science*. 2013; **342**: 967-70.

- 1  
2  
3  
4  
5  
6  
7  
8  
9  
10  
11  
12  
13  
14  
15  
16  
17  
18  
19  
20  
21  
22  
23  
24  
25  
26  
27  
28  
29  
30  
31  
32  
33  
34  
35  
36  
37  
38  
39  
40  
41  
42  
43  
44  
45  
46  
47  
48  
49  
50  
51  
52  
53  
54  
55  
56  
57  
58  
59  
60  
61  
62  
63  
64  
65
150. Viaud S, Saccheri F, Mignot G, Yamazaki T, Dailhere R, Hannani D, et al. The intestinal microbiota modulates the anticancer immune effects of cyclophosphamide. *Science*. 2013; **342**: 971-6.
  151. Zitvogel L, Ayyoub M, Routy B, Kroemer G. Microbiome and anticancer immunosurveillance. *Cell*. 2016; **165**: 276-87.
  152. Haimovitz-Friedman A, Balaban N, McLoughlin M, Ehleiter D, Michaeli J, Vlodavsky I, et al. Protein kinase C mediates basic fibroblast growth factor protection of endothelial cells against radiation-induced apoptosis. *Cancer Res*. 1994; **54**: 2591-7.
  153. Fuks Z, Persaud RS, Alfieri A, McLoughlin M, Ehleiter D, Schwartz JL, et al. Basic fibroblast growth factor protects endothelial cells against radiation-induced programmed cell death in vitro and in vivo. *Cancer Res*. 1994; **54**: 2582-90.
  154. Zhang S, Qiu X, Zhang Y, Fu K, Zhao X, Wu J, et al. Basic fibroblast growth factor ameliorates endothelial dysfunction in radiation-induced bladder injury. *Biomed Res Int*. 2015; **2015**: 967680.
  155. Ito T, Maruyama I. Thrombomodulin: protectorate God of the vasculature in thrombosis and inflammation. *J Thromb Haemost*. 2011; **9 Suppl 1**: 168-73.
  156. Pathak R, Wang J, Garg S, Aykin-Burns N, Petersen KU, Hauer-Jensen M. Recombinant thrombomodulin (solulin) ameliorates early intestinal radiation toxicity in a preclinical rat model. *Radiat Res*. 2016; **186**: 112-20.
  157. Maxhimer JB, Soto-Pantoja DR, Ridnour LA, Shih HB, Degraff WG, Tsokos M, et al. Radioprotection in normal tissue and delayed tumor growth by blockade of CD47 signaling. *Sci Transl Med*. 2009; **1**: 3ra7.
  158. Korpela E, Yohan D, Chin LC, Kim A, Huang X, Sade S, et al. Vasculotide, an Angiopoietin-1 mimetic, reduces acute skin ionizing radiation damage in a preclinical mouse model. *BMC Cancer*. 2014; **14**: 614.
  159. Rotolo J, Stancevic B, Zhang J, Hua G, Fuller J, Yin X, et al. Anti-ceramide antibody prevents the radiation gastrointestinal syndrome in mice. *J Clin Invest*. 2012; **122**: 1786-90.
  160. Abderrahmani R, Francois A, Buard V, Benderitter M, Sabourin JC, Crandall DL, et al. Effects of pharmacological inhibition and genetic deficiency of plasminogen activator inhibitor-1 in radiation-induced intestinal injury. *Int J Radiat Oncol Biol Phys*. 2009; **74**: 942-8.
  161. Ward WF, Molteni A, Ts'ao CH. Endothelial-oriented strategies to spare normal tissues. In: Rubin DB, editor. *The radiation biology of the vascular endothelium*: CRC Press; 1997. p. 185-208.
  162. Verheij M, Dewit LG, Boomgaard MN, Brinkman HJ, van Mourik JA. Ionizing radiation enhances platelet adhesion to the extracellular matrix of human endothelial cells by an increase in the release of von Willebrand factor. *Radiat Res*. 1994; **137**: 202-7.
  163. Hauer-Jensen M, Fink LM, Wang J. Radiation injury and the protein C pathway. *Crit Care Med*. 2004; **32**: S325-30.

- 1  
2  
3  
4  
5  
6  
7  
8  
9  
10  
11  
12  
13  
14  
15  
16  
17  
18  
19  
20  
21  
22  
23  
24  
25  
26  
27  
28  
29  
30  
31  
32  
33  
34  
35  
36  
37  
38  
39  
40  
41  
42  
43  
44  
45  
46  
47  
48  
49  
50  
51  
52  
53  
54  
55  
56  
57  
58  
59  
60  
61  
62  
63  
64  
65
164. Geiger H, Pawar SA, Kerschen EJ, Nattamai KJ, Hernandez I, Liang HP, et al. Pharmacological targeting of the thrombomodulin-activated protein C pathway mitigates radiation toxicity. *Nat Med.* 2012; **18**: 1123-9.
  165. Kennedy AR, Maity A, Sanzari JK. A review of radiation-induced coagulopathy and new findings to support potential prevention strategies and treatments. *Radiat Res.* 2016; **186**: 121-40.
  166. Wang J, Zheng H, Ou X, Albertson CM, Fink LM, Herbert JM, et al. Hirudin ameliorates intestinal radiation toxicity in the rat: support for thrombin inhibition as strategy to minimize side-effects after radiation therapy and as countermeasure against radiation exposure. *J Thromb Haemost.* 2004; **2**: 2027-35.
  167. Kantara C, Moya SM, Houchen CW, Umar S, Ullrich RL, Singh P, et al. Novel regenerative peptide TP508 mitigates radiation-induced gastrointestinal damage by activating stem cells and preserving crypt integrity. *Lab Invest.* 2015; **95**: 1222-33.
  168. Olszewska-Pazdrak B, McVicar SD, Rayavara K, Moya SM, Kantara C, Gammarano C, et al. Nuclear countermeasure activity of TP508 linked to restoration of endothelial function and acceleration of DNA repair. *Radiat Res.* 2016; **186**: 162-74.
  169. Dong X, Tong F, Qian C, Zhang R, Dong J, Wu G, et al. NEMO modulates radiation-induced endothelial senescence of human umbilical veins through NF-kappaB signal pathway. *Radiat Res.* 2015; **183**: 82-93.
  170. Panganiban RA, Day RM. Inhibition of IGF-1R prevents ionizing radiation-induced primary endothelial cell senescence. *PLoS One.* 2013; **8**: e78589.
  171. Tchkonja T, Zhu Y, van Deursen J, Campisi J, Kirkland JL. Cellular senescence and the senescent secretory phenotype: therapeutic opportunities. *J Clin Invest.* 2013; **123**: 966-72.
  172. Xu M, Tchkonja T, Ding H, Ogrodnik M, Lubbers ER, Pirtskhalava T, et al. JAK inhibition alleviates the cellular senescence-associated secretory phenotype and frailty in old age. *Proc Natl Acad Sci U S A.* 2015; **112**: E6301-10.
  173. Baker DJ, Wijshake T, Tchkonja T, LeBrasseur NK, Childs BG, van de Sluis B, et al. Clearance of p16Ink4a-positive senescent cells delays ageing-associated disorders. *Nature.* 2011; **479**: 232-6.
  174. Chang J, Wang Y, Shao L, Laberge RM, Demaria M, Campisi J, et al. Clearance of senescent cells by ABT263 rejuvenates aged hematopoietic stem cells in mice. *Nat Med.* 2016; **22**: 78-83.
  175. Day RM, Snow AL, Panganiban RA. Radiation-induced accelerated senescence: A fate worse than death? *Cell Cycle.* 2014; **13**: 2011-2.
  176. England RN, Preston KJ, Scalia R, Autieri MV. Interleukin-19 decreases leukocyte-endothelial cell interactions by reduction in endothelial cell adhesion molecule mRNA stability. *Am J Physiol Cell Physiol.* 2013; **305**: C255-65.
  177. Hamming LC, Slotman BJ, Verheul HMW, Thijssen VL. The clinical application of angiostatic therapy in combination with radiotherapy: past, present, future. *Angiogenesis.* 2017; **20**: 217-32.

- 1  
2  
3  
4  
5  
6  
7  
8  
9  
10  
11  
12  
13  
14  
15  
16  
17  
18  
19  
20  
21  
22  
23  
24  
25  
26  
27  
28  
29  
30  
31  
32  
33  
34  
35  
36  
37  
38  
39  
40  
41  
42  
43  
44  
45  
46  
47  
48  
49  
50  
51  
52  
53  
54  
55  
56  
57  
58  
59  
60  
61  
62  
63  
64  
65
178. Kleibeuker EA, Griffioen AW, Verheul HM, Slotman BJ, Thijssen VL. Combining angiogenesis inhibition and radiotherapy: a double-edged sword. *Drug Resist Updat.* 2012; **15**: 173-82.
  179. Kleibeuker EA, Ten Hooven MA, Verheul HM, Slotman BJ, Thijssen VL. Combining radiotherapy with sunitinib: lessons (to be) learned. *Angiogenesis.* 2015; **18**: 385-95.
  180. Favaudon V, Caplier L, Monceau V, Pouzoulet F, Sayarath M, Fouillade C, et al. Ultrahigh dose-rate FLASH irradiation increases the differential response between normal and tumor tissue in mice. *Sci Transl Med.* 2014; **6**: 245ra93.
  181. Montay-Gruel P, Petersson K, Jaccard M, Boivin G, Germond JF, Petit B, et al. Irradiation in a flash: Unique sparing of memory in mice after whole brain irradiation with dose rates above 100Gy/s. *Radiother Oncol.* 2017; **124**: 365-69.
  182. Kroemer G, Galluzzi L, Kepp O, Zitvogel L. Immunogenic cell death in cancer therapy. *Annu Rev Immunol.* 2013; **31**: 51-72.
  183. Wilson R, Espinosa-Diez C, Kanner N, Chatterjee N, Ruhl R, Hipfinger C, et al. MicroRNA regulation of endothelial TREX1 reprograms the tumour microenvironment. *Nat Commun.* 2016; **7**: 13597.
  184. Kamrava M, Bernstein MB, Camphausen K, Hodge JW. Combining radiation, immunotherapy, and antiangiogenesis agents in the management of cancer: the Three Musketeers or just another quixotic combination? *Mol Biosyst.* 2009; **5**: 1262-70.
  185. Garber K. Promising early results for immunotherapy-antiangiogenesis combination. *J Natl Cancer Inst.* 2014; **106**.
  186. McDermott D, Lebbe C, Hodi FS, Maio M, Weber JS, Wolchok JD, et al. Durable benefit and the potential for long-term survival with immunotherapy in advanced melanoma. *Cancer Treat Rev.* 2014; **40**: 1056-64.
  187. Miller MA, Chandra R, Cuccarese MF, Pfirschke C, Engblom C, Stapleton S, et al. Radiation therapy primes tumors for nanotherapeutic delivery via macrophage-mediated vascular bursts. *Sci Transl Med.* 2017; **9**.
  188. Miller MA, Zheng YR, Gadde S, Pfirschke C, Zope H, Engblom C, et al. Tumour-associated macrophages act as a slow-release reservoir of nano-therapeutic Pt(IV) pro-drug. *Nat Commun.* 2015; **6**: 8692.
  189. Shiao SL, Ruffell B, DeNardo DG, Faddegon BA, Park CC, Coussens LM. TH2-polarized CD4(+) T cells and macrophages limit efficacy of radiotherapy. *Cancer Immunol Res.* 2015; **3**: 518-25.
  190. Appelboom G, Detappe A, LoPresti M, Kunjachan S, Mitrasinovic S, Goldman S, et al. Stereotactic modulation of blood-brain barrier permeability to enhance drug delivery. *Neuro Oncol.* 2016; **18**: 1601-09.
  191. Kunjachan S, Detappe A, Kumar R, Ireland T, Cameron L, Biancur DE, et al. Nanoparticle mediated tumor vascular disruption: a novel strategy in radiation therapy. *Nano Lett.* 2015; **15**: 7488-96.

## FIGURE LEGENDS

1  
2 **Figure 1.** The leukocyte adhesion cascade is triggered by a pro-inflammatory stimulus. Injury  
3 activates endothelial cells, allows production of free radicals, and damages tissue and tissue-  
4 resident immune cells leading to the release of cytokines, chemokines and growth factors, which  
5 then attract leukocytes from the circulation. Circulating leukocytes undertake a seven-step process  
6 of capture, rolling, slow rolling and activation, arrest and adhesion strengthening, intravascular  
7 crawling and finally transmigration to reach sites of inflammation. Each step of this process is  
8 controlled by various adhesion molecules at the surface of the endothelium. All of these proteins  
9 are glycosylated, a post-translational modification process that may be regulated during  
10 inflammation. During this cascade of events, leukocytes are also activated by interactions with  
11 cytokines, chemokines and growth factors sequestered by the glycosaminoglycans of the  
12 endothelial glycocalyx.  
13  
14  
15  
16  
17

18 **Figure 2.** Ionizing radiation injures the vascular endothelium. DNA damage and ceramide production  
19 lead to cell death, stress-induced premature senescence, cell activation mainly characterized by  
20 the overexpression of adhesion molecules, and disruption of the endothelial barrier. Endothelial  
21 activation promotes a pro-thrombotic and pro-inflammatory phenotype that ultimately leads to  
22 thrombosis and recruitment of leukocytes. Irradiated endothelial cells can also undergo an  
23 endothelial-to-mesenchymal transition that potentially contributes to fibrosis via a final  
24 differentiation into activated myofibroblasts capable of secreting collagens.  
25  
26  
27  
28

29 **Figure 3.** Immune-inflammatory effects of radiation exposure on normal tissues, tumours and  
30 tumour microenvironment. Ionizing radiation causes tumour and normal cell damage, cell death and  
31 release of damage-associated molecular patterns (DAMPs), which act as pro-inflammatory signals.  
32 Radiation activates cells that then release cytokines/chemokines. Activated endothelial cells  
33 acquire a pro-inflammatory phenotype which promotes the leukocyte adhesion cascade. These  
34 initial responses finally lead to the recruitment and activation of diverse immune cells, which can  
35 then also participate in the abscopal effect of radiotherapy. Delayed mitotic death and proliferation  
36 of immune cells in the tissue then cause environmental changes that ultimately contribute to  
37 necrosis or fibrosis. Irradiation of the microbiota of the intestinal tract can also influence the  
38 responses of normal tissues and tumours through immune-vascular crosstalk.  
39  
40  
41  
42  
43  
44

45 **Figure 4.** Potential endothelial-oriented strategies to spare normal tissue by targeting cytotoxicity,  
46 coagulation, activation of the immune-inflammatory response and senescence.  
47  
48

49 **Figure 5.** Endothelial-oriented strategies to enhance tumour control by targeting the  
50 immunostimulatory and immunosuppressive reactions, inducing cell death and increasing vascular  
51 permeability to allow immune cell infiltration.  
52  
53  
54  
55  
56  
57  
58  
59  
60  
61  
62  
63  
64  
65

Figure 1

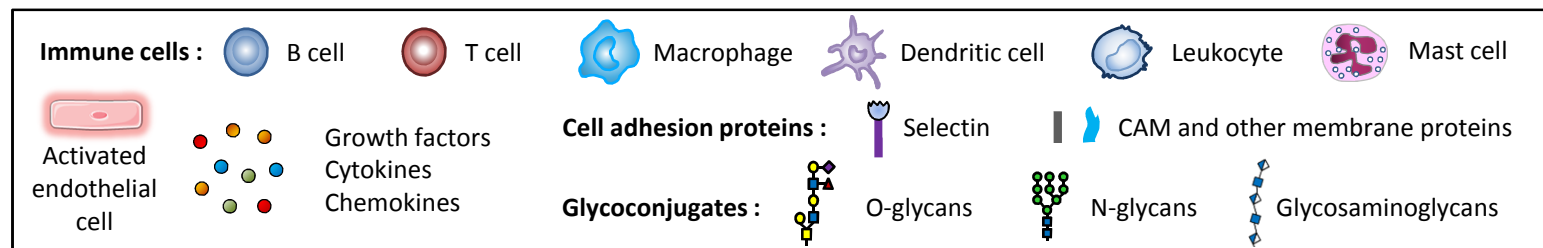
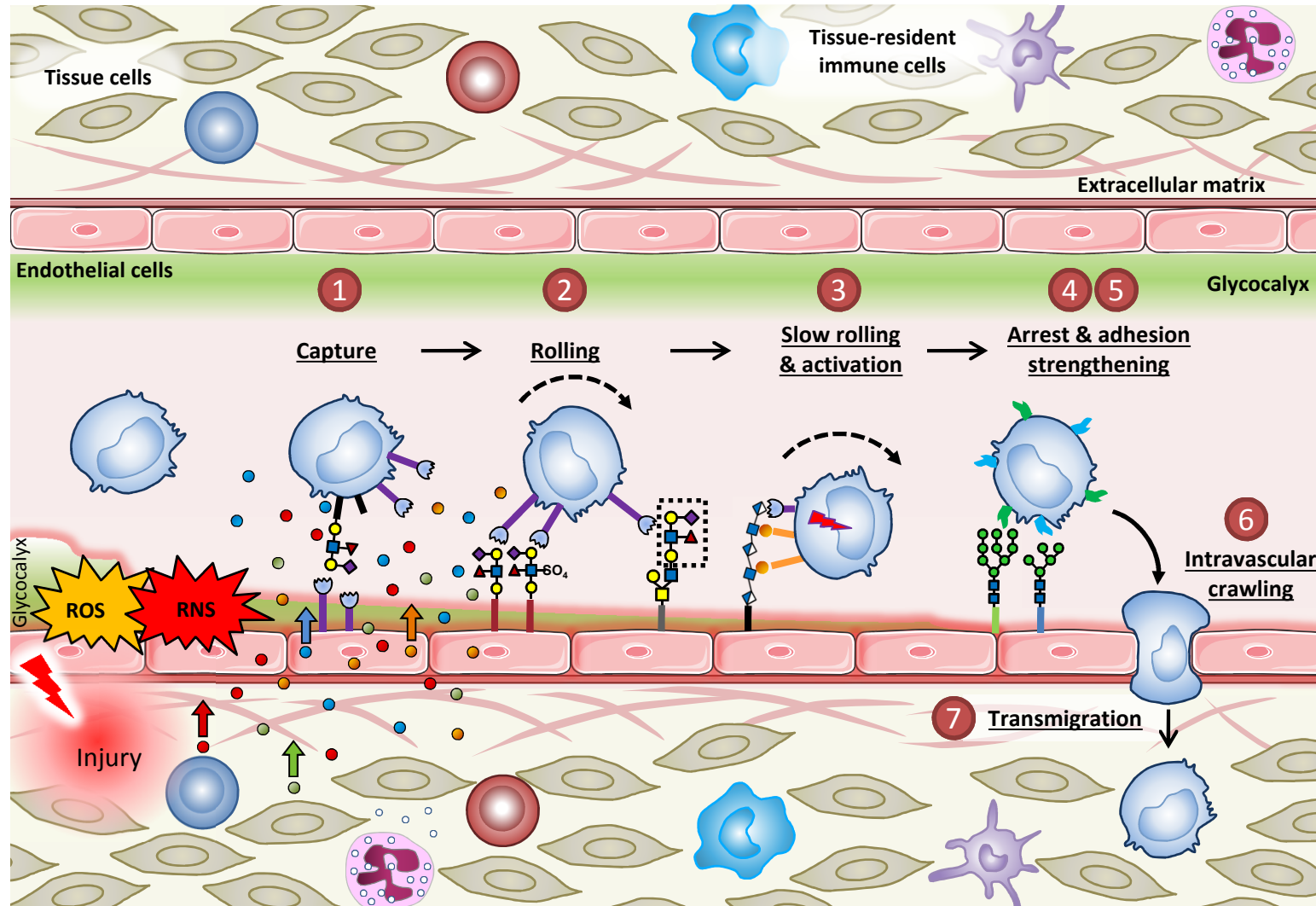
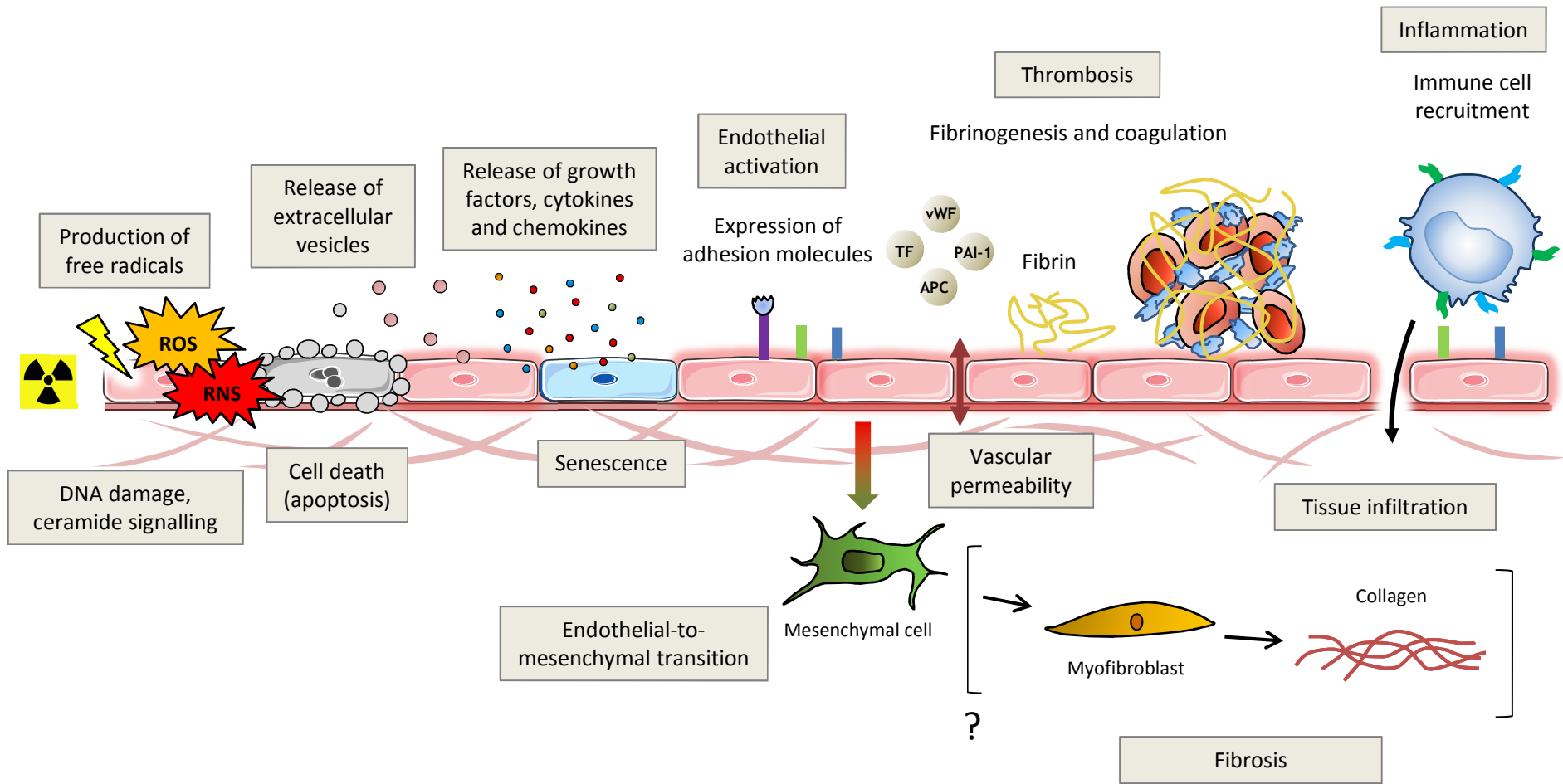




Figure 2



									
Irradiation	Activated endothelial cell	Leukocyte	Red blood cell	Platelet	Growth factors	Cytokines	Chemokines	Selectin	CAM and other membrane proteins

Figure 3

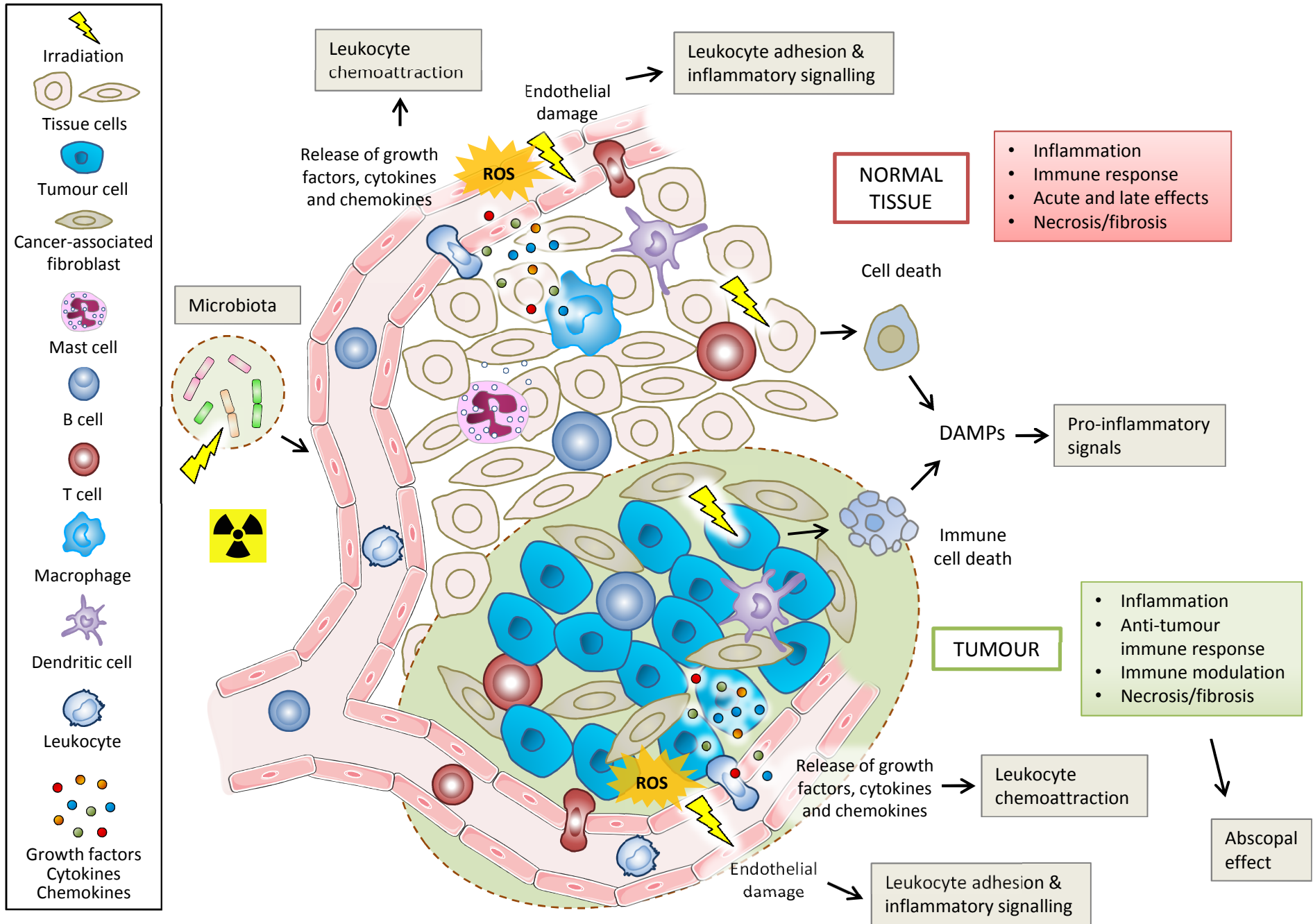


Figure 4

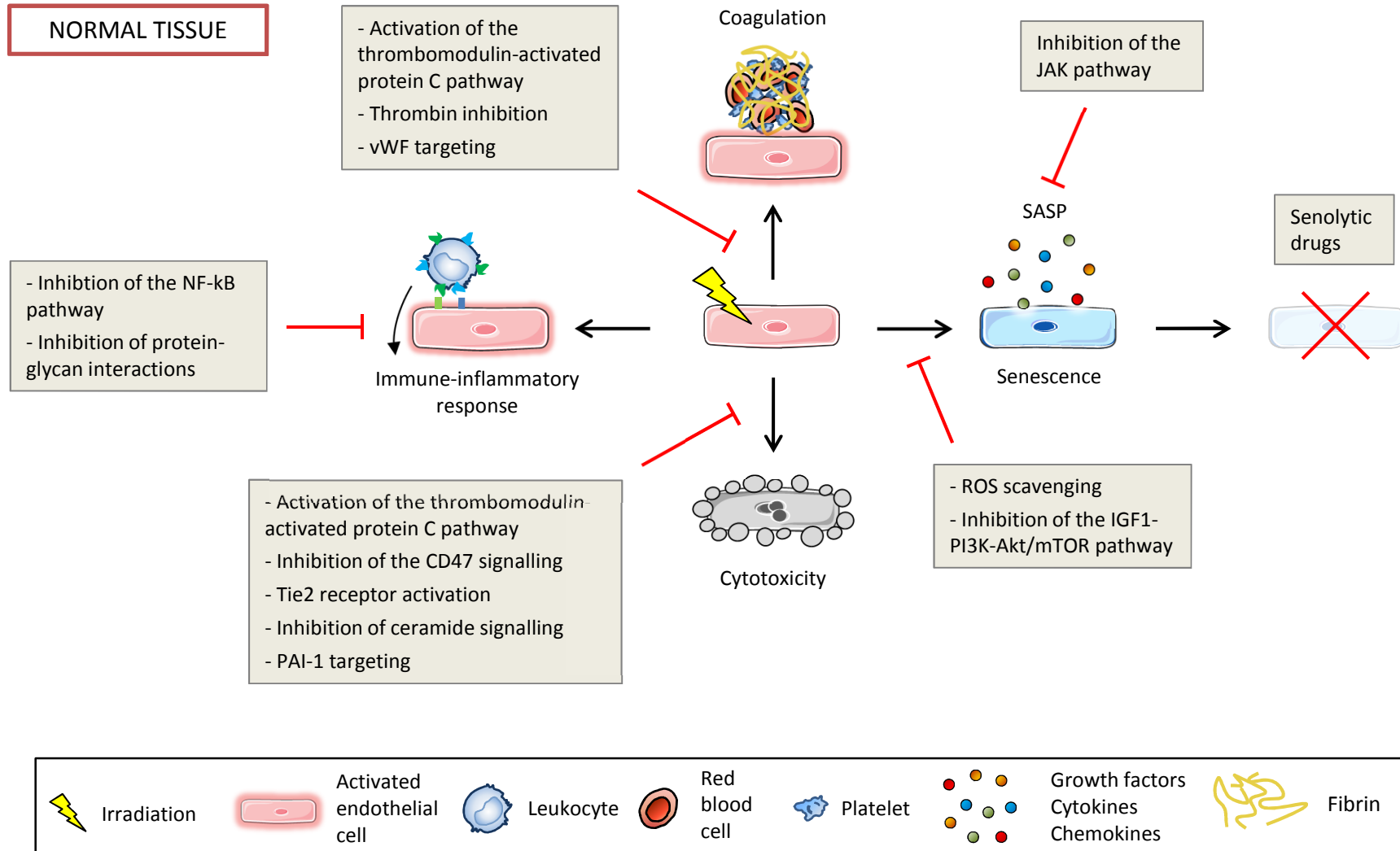


Figure 5

