



**HAL**  
open science

## Viewing FSL results with SPM and vice versa

Thomas Maullin-Sapey, Peter Williams, Guillaume Flandin, Thomas E  
Nichols, Camille Maumet

► **To cite this version:**

Thomas Maullin-Sapey, Peter Williams, Guillaume Flandin, Thomas E Nichols, Camille Maumet. Viewing FSL results with SPM and vice versa. 2017 Annual meeting of the Organisation of Human Brain Mapping (OHBM 2017), Jun 2017, Vancouver, Canada. inserm-01570795

**HAL Id: inserm-01570795**

**<https://inserm.hal.science/inserm-01570795>**

Submitted on 31 Jul 2017

**HAL** is a multi-disciplinary open access archive for the deposit and dissemination of scientific research documents, whether they are published or not. The documents may come from teaching and research institutions in France or abroad, or from public or private research centers.

L'archive ouverte pluridisciplinaire **HAL**, est destinée au dépôt et à la diffusion de documents scientifiques de niveau recherche, publiés ou non, émanant des établissements d'enseignement et de recherche français ou étrangers, des laboratoires publics ou privés.



# Viewing FSL results with SPM and vice versa

Thomas Maullin-Sapey<sup>1</sup>, Peter Williams<sup>2</sup>, Guillaume Flandin<sup>3</sup>, Thomas E. Nichols<sup>1,4</sup>, Camille Maumet<sup>4</sup>

1. Department of Statistics, University of Warwick, Coventry, UK

2. Department of Mathematics, University of Warwick, Coventry, UK

3. Wellcome Trust Centre for Neuroimaging, UCL Institute of Neurology, London, UK.

4. WMG, University of Warwick, Coventry, UK

## Introduction

A growing number of efforts are emerging in the neuroimaging community to **increase reproducibility of research findings** (e.g. [1,2]). In an attempt to facilitate publishing of neuroimaging data and metadata, the NeuroImaging Data Model (NIDM) defines a set of specifications based on semantic web technologies.

The **NIDM-Results** specification was recently introduced, providing a **machine-readable representation of mass univariate statistical results**, including extensive metadata and key images summarising the findings [3].

**NIDM-Results packs can be generated from SPM [5] and FSL [6]**. However few tools exist to read and display NIDM-Results.

Here, **we introduce two NIDM-Results viewers**, one each oriented for users accustomed to SPM and FSL, two of the most widely-used neuroimaging analysis softwares [7].

## Publication

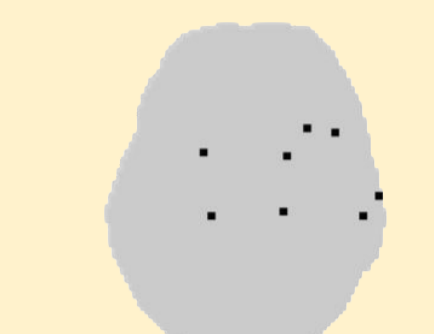
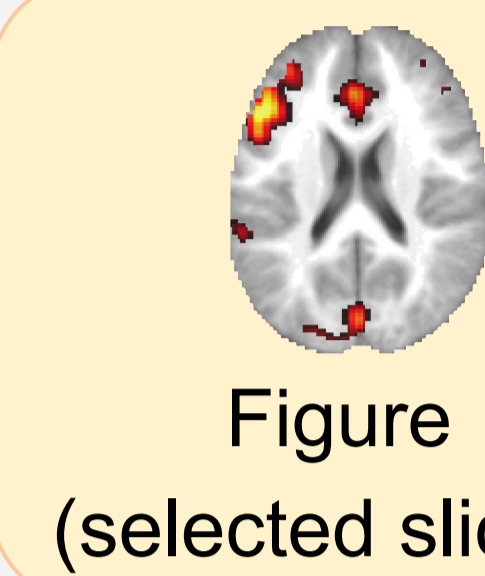
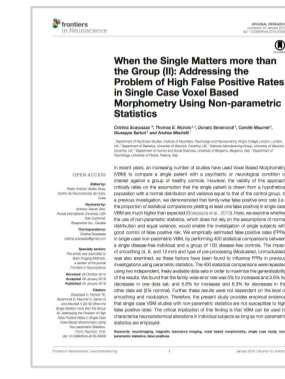
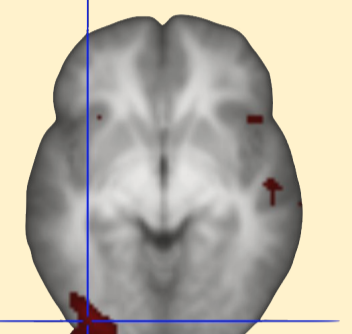
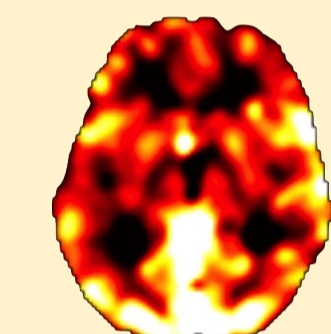
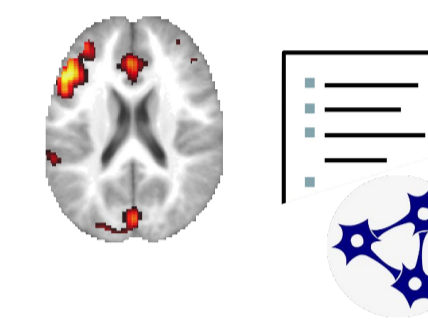


Figure  
(selected slices)

Thresholded  
statistics

Selected peak  
locations

## NIDM-Results



Machine-readable  
metadata

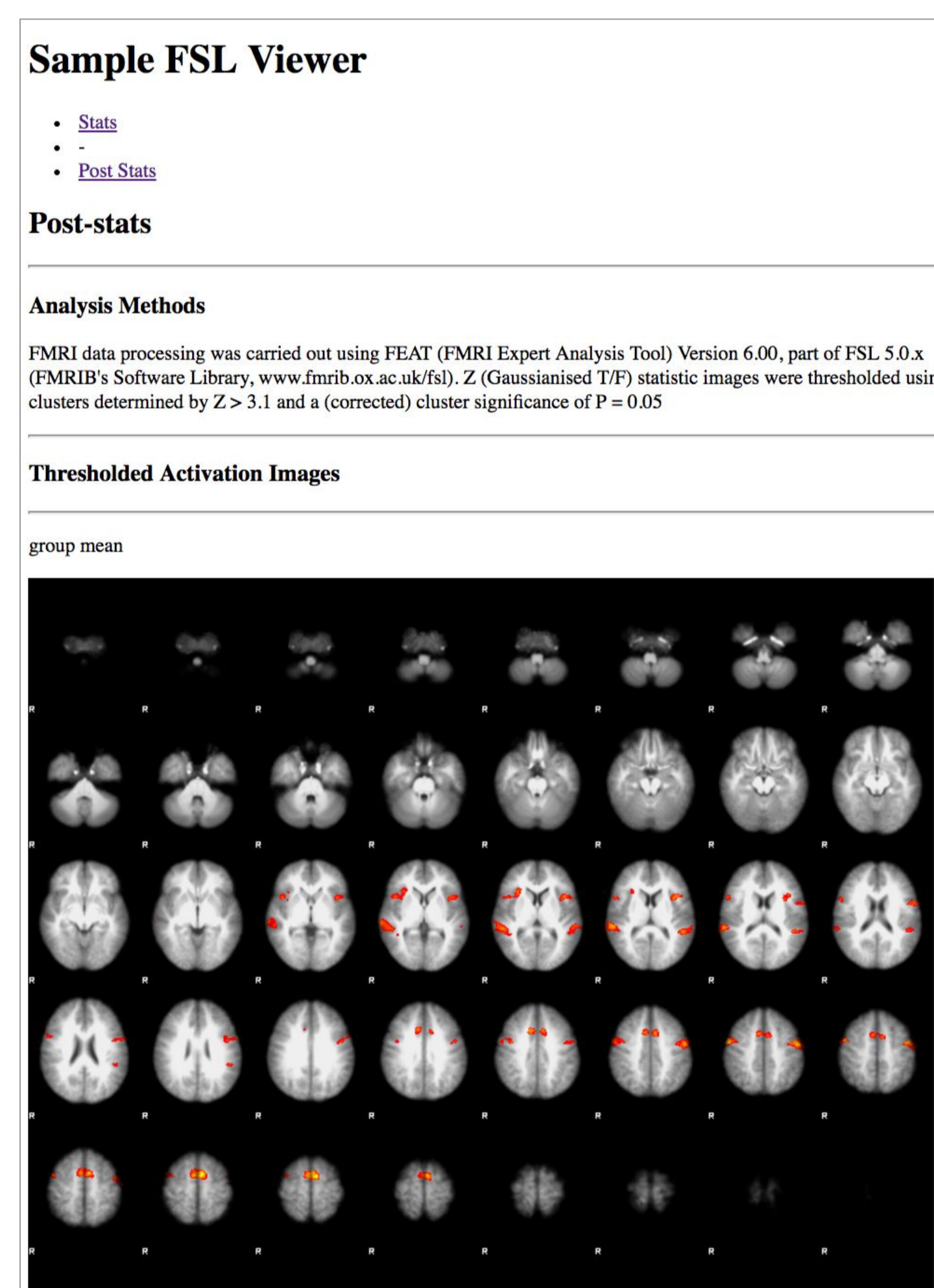
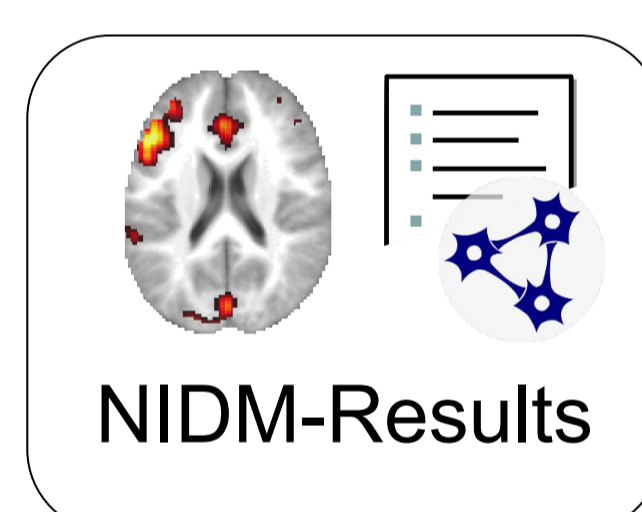
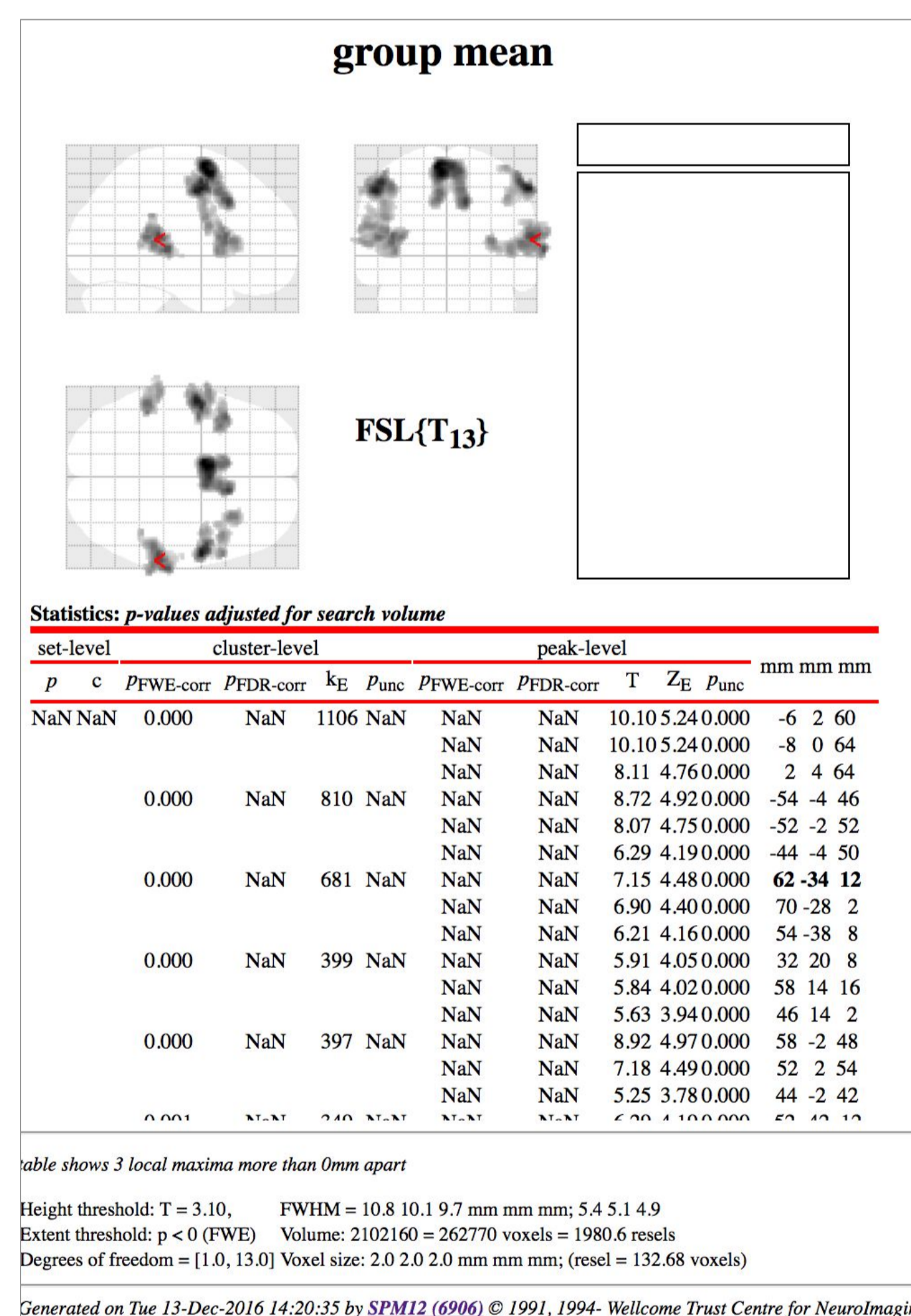
Unthresholded  
statistic maps

All cluster &  
peak locations

## Results

### SPM -style view

### FSL -style view



## Installation

1. Download SPM-style viewer from <https://github.com/incf-nidash/nidmresults-spmhtml>
2. Update the Matlab path

```
addpath(PATH_TO/spm12)  
addpath(PATH_TO/nidmresults-spmhtml)
```

1. Install the FSL-style viewer using pip

```
pip install  
git+git://github.com/incf-nidash/nidmresults-fs  
lhtml.git
```

## Usage

View a NIDM-Results pack with:

```
nidm_results_display('fsl_group_ols.nidm.zip')
```

```
nidmviewerfsl fsl_group_ols.nidm.zip
```

**Fig. 1.** Viewing the results of the same group fMRI study with SPM and FSL. The corresponding NIDM-Results pack is available at: [http://neurovault.org/collections/1692/fsl\\_group\\_ols.nidm](http://neurovault.org/collections/1692/fsl_group_ols.nidm).

## Useful links

SPM-style viewer: <https://github.com/incf-nidash/nidmresults-spmhtml>, FSL-style viewer: <https://github.com/incf-nidash/nidmresults-fslhtml>,

NIDM-Results specification: <http://nidm.nidash.org/specs/nidm-results.html>.

Getting started with NIDM: <http://nidm.nidash.org/getting-started/>.

## Conclusion

We hope that the viewer will facilitate the adoption of the NIDM-Result format for sharing of statistical results in the neuroimaging community as well as interoperability across software packages. This work is part of a growing ecosystem of tools for NIDM and it is our intention to develop more applications to further to increase the practical utility of NIDM-Results. Other projects also include the creation tools for meta-analysis of neuroimaging data.

## References

- [1] Gorgolewski, Front Neuroinform. 2015
- [2] Poldrack Front Neuroinform. 2013
- [3] Maumet Scientific Data. 2016
- [4] <http://www.equator-network.org>
- [5] Penny Academic press. 2011
- [6] Jenkinson Neuroimage. 2012
- [7] Carp Neuroimage. 2012
- [8] <https://rdflib.readthedocs.io/>
- [9] <http://neurovault.org/collections/1692/>
- [10] Pauli et al. Front Neuroinform. 2016

## Acknowledgments

We acknowledge the work of all INCF task force members as well as the Wellcome Trust for support of CM and TEN.