



HAL
open science

Gaining Insights Into Multiple Sclerosis Lesion Characteristics from Brain Tissue Microstructure Information: A Multi-Compartment T2 Relaxometry Approach

Sudhanya Chatterjee, Olivier Commowick, Simon K. Warfield, Christian Barillot

► To cite this version:

Sudhanya Chatterjee, Olivier Commowick, Simon K. Warfield, Christian Barillot. Gaining Insights Into Multiple Sclerosis Lesion Characteristics from Brain Tissue Microstructure Information: A Multi-Compartment T2 Relaxometry Approach. ISMRM 25TH ANNUAL MEETING & EXHIBITION, Apr 2017, Honolulu, Hawaii, USA, United States. inserm-01543061

HAL Id: inserm-01543061

<https://inserm.hal.science/inserm-01543061>

Submitted on 20 Jun 2017

HAL is a multi-disciplinary open access archive for the deposit and dissemination of scientific research documents, whether they are published or not. The documents may come from teaching and research institutions in France or abroad, or from public or private research centers.

L'archive ouverte pluridisciplinaire **HAL**, est destinée au dépôt et à la diffusion de documents scientifiques de niveau recherche, publiés ou non, émanant des établissements d'enseignement et de recherche français ou étrangers, des laboratoires publics ou privés.

Gaining Insights into Multiple Sclerosis Lesion Characteristics from Brain Tissue Microstructure

Information: A Multi-compartment T2 Relaxometry Approach

Sudhanya Chatterjee¹, Olivier Commowick¹, Simon K. Warfield², and Christian Barillot¹

¹Unité VisAGeS U1228, INSERM, INRIA, Université Rennes I, IRISA, UMR CNRS 6074, Campus de Beaulieu, 35042 Rennes Cedex

²Boston Children's Hospital, Department of Radiology, MA 02115, USA

Inserm

Institut national de la santé et de la recherche médicale



Purpose

Propose a T2 relaxometry based multi-compartment model for brain tissues to quantify water fractions corresponding to myelin, axon and cells, and free fluids per voxel. Evaluate the proposed model on MS patients and observe temporal trends of the brain tissue microstructure for MS patients.

Method

The T2 space is modeled as a weighted mixture of signal contributions from the three compartments. Each compartment is described as a Gaussian probability density function in the T2 space.

$$\text{Voxel signal at } i\text{-th echo} \longrightarrow s(t_i) = M_0 \sum_{j=1}^3 w_j \int_{T_2} f_j(T_2; \mu_j, \sigma_j) \text{EPG}(T_2, \Delta TE, i, T_1, B_1) dT_2$$

Gaussian PDF depicting j -th compartment

Field inhomogeneity

TurboSE sequence data suffer from the effect of stimulated echoes[1]. The echo curves for such sequences can be computed using Extended Phase Graph (EPG) algorithm [2].

$$\text{Cost function optimized: } \min_{c, B_1} \|Y - S\|_2^2 = \min_{c, B_1} \sum_{i=1}^{n_{\text{echoes}}} \left(y_i - \sum_{j=1}^3 c_j \int_{T_2} f_j(T_2; \mu_j, \sigma_j) \text{EPG}(T_2, \Delta TE, i, T_1, B_1) dT_2 \right)^2$$

Observed signal $\longleftarrow M_0 \times w_j$

Values of $\{\mu_j, \sigma_j\}$ are chosen in accordance with information available from histology studies [3].

Since EPG does not have a closed form solution for its gradient along B_1 [2], it is computed by a gradient free optimizer (BOBYQA [4]). c is computed by NNLS optimization. Optimization for c and B_1 is performed alternatively until convergence is obtained in the desired error limit.

Results

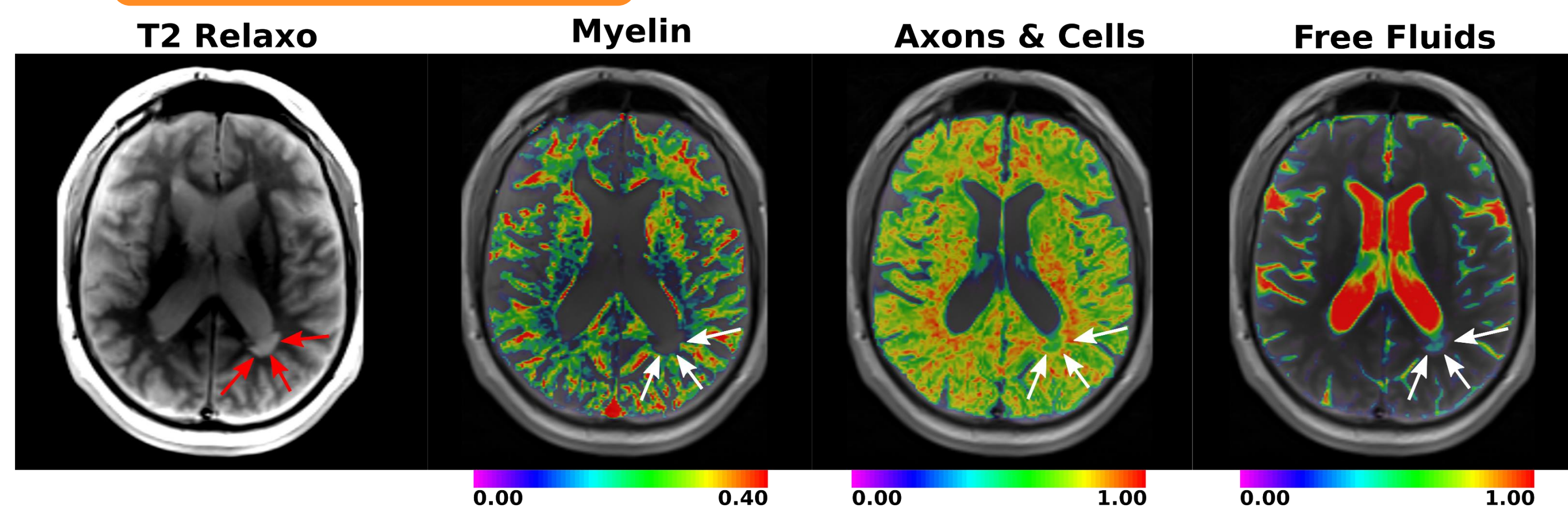


Figure 1: A Case of MS patient with a lesion around the ventricle. The estimated water fraction values of the compartments show lack of myelin presence in the lesion accompanied by axonal loss and accumulation of fluid. These are in accordance with the observations found in the literature on the pathology of MS lesions [5].

Figure 3: The lesion ROI water fraction value statistics exhibit the lack of myelin presence accompanied by an increasing fluid accumulation and continual axonal damage over the period of 24 months. The contralateral healthy ROI maintains healthy myelin and axonal water fraction values and show absence of any fluid accumulation.

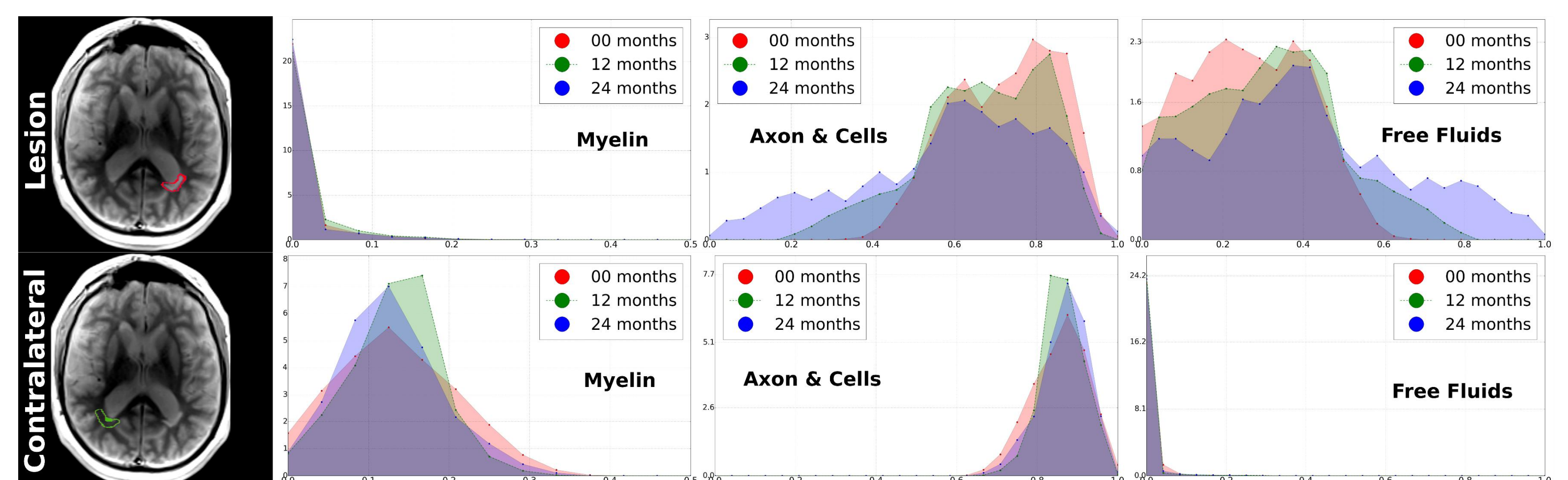
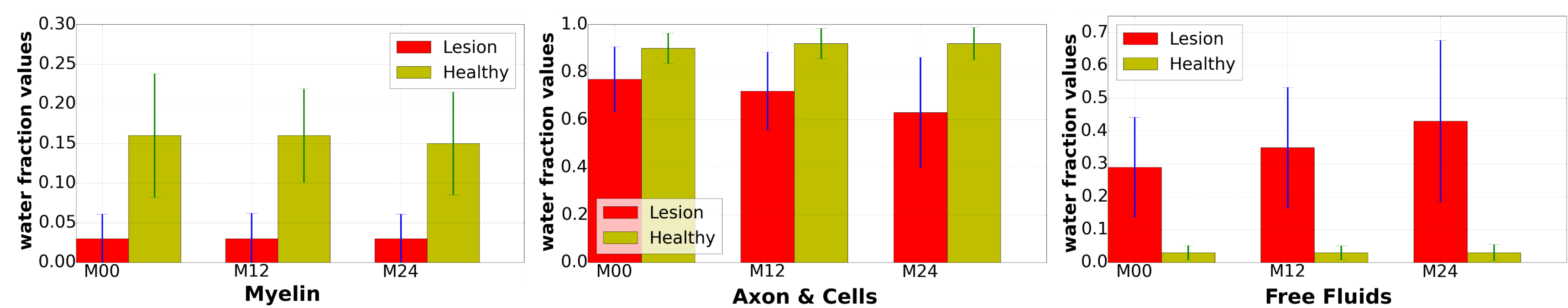


Figure 2: Comparison of the evolution of the distribution of the estimated water fraction values for the three compartments between a lesion ROI (top) and its contralateral healthy brain tissue ROI (bottom).



Conclusion

The proposed T2 relaxometry multi-compartment model provides quantitative insights into the microstructure of brain tissues.

The observations of the experiments on patient data confirm those of existing literature [3, 5].

References:

- [1] J. Hennig, et al. MRM, vol. 51, no. 1, pp. 68–80, 2004.
- [2] T. Prasloski, et al. MRM, vol. 67, no. 6, pp. 1803–1814, 2012.
- [3] C. Laule, et al. Neurotherapeutics, vol. 4, no. 3, pp. 460–484, 2007.
- [4] Powell, Michael JD. et al. Cambridge NA Report NA2009/06, Univ. of Cambridge, Cambridge, 2009.
- [5] H. Lassmann, et al. Trends in Molecular Medicine, vol. 7, no. 3, pp. 115–121, 2001.

Acknowledgements: MRI data acquisition was supported by the Neurinfo MRI research facility from the University of Rennes I. Neurinfo is granted by the European Union (FEDER), the French State, the Brittany Council, Rennes