



**HAL**  
open science

# A 3D hierarchical multimodal detection and segmentation method for multiple sclerosis lesions in MRI

Hélène Urien, Irène Buvat, Nicolas Rougon, Isabelle Bloch

► **To cite this version:**

Hélène Urien, Irène Buvat, Nicolas Rougon, Isabelle Bloch. A 3D hierarchical multimodal detection and segmentation method for multiple sclerosis lesions in MRI. Proceedings of the 1st MICCAI Challenge on Multiple Sclerosis Lesions Segmentation Challenge Using a Data Management and Processing Infrastructure - MICCAI-MSSEG, pp.69-74, 2016. inserm-01417465

**HAL Id: inserm-01417465**

**<https://inserm.hal.science/inserm-01417465v1>**

Submitted on 15 Dec 2016

**HAL** is a multi-disciplinary open access archive for the deposit and dissemination of scientific research documents, whether they are published or not. The documents may come from teaching and research institutions in France or abroad, or from public or private research centers.

L'archive ouverte pluridisciplinaire **HAL**, est destinée au dépôt et à la diffusion de documents scientifiques de niveau recherche, publiés ou non, émanant des établissements d'enseignement et de recherche français ou étrangers, des laboratoires publics ou privés.

# A 3D hierarchical multimodal detection and segmentation method for multiple sclerosis lesions in MRI

Hélène Urien<sup>\*†</sup>, Irène Buvat<sup>\*</sup>, Nicolas Rougon<sup>†</sup>, and Isabelle Bloch<sup>\*†</sup>

<sup>\*†</sup> LTCI, CNRS, Télécom ParisTech, Université Paris-Saclay, 75013, Paris, France

<sup>\*</sup> IMIV, Inserm, CEA, Université Paris-Sud, CNRS, Université Paris-Saclay, 91400, Orsay

<sup>†</sup> MAP5, CNRS, Télécom SudParis, Université Paris-Saclay, 91011, Evry, France

**Abstract.** In this paper, we propose a novel 3D method for multiple sclerosis segmentation on FLAIR Magnetic Resonance images (MRI), based on a lesion context-based criterion performed on a max-tree representation. The detection criterion is refined using prior information from other available MRI acquisitions (T2, T1, T1 enhanced with Gadolinium and DP). The method has been tested on fifteen patients suffering from multiple sclerosis. The results show the ability of the method to detect almost all lesions. However, the algorithm also provides false detections.

**Keywords:** Max-tree, multiple sclerosis, MRI multimodal segmentation.

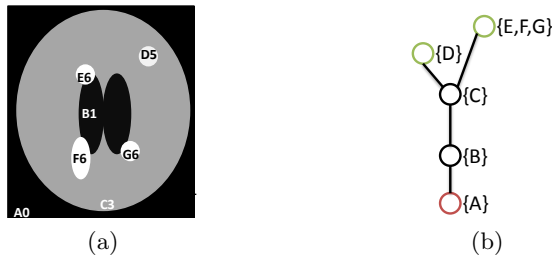
## 1 Introduction

In this paper, we present a new method to detect and segment lesions from MRI images of patients suffering from multiple sclerosis. The method is based on a hierarchical approach, where the image is represented by a tree depicting the relationship between all the connected components of all the thresholded versions of the image. The nodes of the tree represent the potential lesions, and are selected only if they satisfy a criterion based on the difference between the lesion and the surrounding intensities. Our method was tested on the fifteen training datasets given by the MICCAI MSSEG challenge, providing different MRI acquisitions for each patient (FLAIR, T2, T1, T1 enhanced with Gadolinium and DP). The detection is first performed on FLAIR, and then refined using the other available modalities. Parameter setting is given and results are discussed.

## 2 A 3D multiple sclerosis lesion detection method using a hierarchical approach

The lesion detection is based on the hypothesis that the FLAIR intensity of a lesion is higher in a lesion than in the surrounding region. This assumption

was verified on the lesions extracted from the manual consensus segmentations performed using the LOP STAPLE algorithm [1], considering the average FLAIR intensity in the segmented region and in a neighborhood. The detection relies on a max-tree representation of the image [2], which highlights regions of high intensities. This method, based on the study of inclusion relationships between connected components obtained by thresholding an image at all its intensity values, has several advantages. It allows searching for potential lesions in the whole image, without any prior information about the number or localizations of lesions. Connected components are selected according to a given criterion. An example is depicted in Figure 1, where homogeneous regions, called flat zones, are illustrated by a letter identifying a specific region, and a number corresponding to the signal intensity in each voxel of the region. The tree is oriented from the root corresponding to the flat zone of lowest intensity, to the leaves, which correspond to the flat zones of highest intensities in the image. A node  $N$  is said to be a descendant of a node  $M$  if it is higher in the tree. As an example,  $D$  is a descendant of  $C$  in Figure 1.



**Fig. 1.** Example of a synthetic image (a) and its corresponding max-tree (b). The root node is depicted in red, while the leaves are represented in green. Regions are identified by a letter and a number corresponding to the grey level in the region.

The first step is the selection of relevant nodes according to a given criterion, composed of two terms and applied to each current node  $N$ :

$$\chi_I(N) = X1_I(N) - X2(N) \quad (1)$$

The first term  $X1_I$  follows our hypothesis of difference in intensities between the lesion and its surroundings:

$$X1_I(N) = \frac{\sum_{x \in \hat{N}} I(x)}{n_{\hat{N}}} \quad (2)$$

$$= \frac{\sum_{x \in C_{\hat{N}}} I(x)}{n_{C_{\hat{N}}}}$$

where  $I(x) = I_{\text{FLAIR}}(x)$  is the pre-processed FLAIR intensity in a voxel  $x$ ,  $n_{\hat{N}}$  the number of voxels within the region  $\hat{N}$ , representing the current node  $N$  and all its descendants, and  $n_{C_{\hat{N}}}$  the number of voxels within a contextual volume surrounding node  $N$  and all its descendants. The maximal Euclidian distance

from a voxel of the contextual volume to the nearest voxel to  $\widehat{N}$  is set to  $\alpha$  voxels. If a node  $N$  is representative of a lesion, the criterion value  $X_I(N)$  is superior to 1.

The second term  $X_2$  depends on the location of current node  $N$  compared to the  $z$  axis. If the node is located in slices of the FLAIR image containing ventricles, we assume that the lesion tends to be near the ventricles:

$$X_2(N) = \frac{\min_{x \in \widehat{N}, v \in V} d(x, v)}{\max_{b \in B, v \in V} d(b, v)} \quad (3)$$

where  $x$  is a voxel from the volume  $\widehat{N}$  composed of the current node  $N$  and all its descendants,  $v$  a voxel from the binary mask of the ventricles  $V$ ,  $d$  the Euclidian distance and  $b$  a voxel from the binary mask of the brain provided in the unprocessed dataset  $B$ . Otsu's thresholding [3] is applied on the pre-processed T1 image to segment the ventricles.

If the node is not located in slices containing ventricles, we penalize small nodes:

$$X_2(N) = \frac{1}{n_{\widehat{N}}} \quad (4)$$

where  $n_{\widehat{N}}$  is the number of voxels within region  $\widehat{N}$ , representing the current node  $N$  and all its descendants.

The last step is the reconstruction of the image. Only the nodes with criterion value  $\chi$  superior to 1 are taken into account. The first node to be selected is the one with the highest criterion value. All its descendants and ancestors with criterion value superior to 1 are removed from the searching list. The remaining node with the highest criterion value superior to 1 is then selected. This process is repeated until there is no node with criterion value superior to 1 in the searching list. The final image is the union of all the selected nodes filled with their descendants.

To improve the detection performance, additional constraints are used, depending on the location of the lesions with respect to brain structures, and with adaptative ranges of admissible  $\chi$  values. These ranges are defined in a supervised way. The position of a lesion compared to brain structures is assigned to one of three categories: near the ventricles, inside the white matter, and near the cortex. Otsu's thresholding [3] is applied on the pre-processed FLAIR image to segment the white matter. Using an automatic thresholding is enough to roughly localize the structures of interest. The manually segmented lesions were also assigned to these three regions, according to their position. For each region, and for each available modality  $I$ , the maximal and minimal values of the criterion  $\chi_I$  were computed, as illustrated in Table 1. Moreover, the maximal and minimal values of the volume of each lesion were computed according to their position, as illustrated in Table 2. Finally, a node  $N$  is selected only if the value of the criterion  $\chi_I$  computed for all the modalities  $I$  and depending on the position of

the node with respect to the brain structures falls within the intervals defined in Tables 1 and 2. If so, the criterion  $\chi_{\text{FLAIR}}$  is assigned to this node  $N$ , which is taken into account in the image reconstruction step only if its value is superior to 1.

### 3 Results and discussion

The algorithm uses images from both pre-processed (FLAIR, T1 enhanced with Gadolinium, T2, T1, DP) and unprocessed (FLAIR and brain binary mask) datasets.

#### 3.1 Parameter setting

In order to limit the size of the tree, while preserving contour information, the input image is first quantified on  $k$  levels. Here we used  $k = 20$  for FLAIR images. Then the tree is created using Salembier’s algorithm [2] on the quantized FLAIR image.

The maximal Euclidian distance from a voxel of the contextual volume to the nearest voxel to node  $\hat{N}$  filled with all its descendants is set to  $\alpha = 1$  voxel.

The connectivity was set to 26 to compute the max-tree. Tables 1 and 2 show the minimal and maximal values of the criterion and of the volumes of manually segmented lesions according to the position of the lesion.

	Lesion near the ventricles		Lesion inside the white matter		Other lesion	
	Minimal value	Maximal value	Minimal value	Maximal value	Minimal value	Maximal value
Original FLAIR	1.00	1.50	1.00	1.50	1.00	1.50
Pre-processed FLAIR	1.00	1.50	1.00	1.50	1.00	1.50
Pre-processed T2	0.90	2.00	0.90	2.00	1.00	2.00
Pre-processed T1	0.50	1.50	0.80	1.50	0.70	1.00
Pre-processed T1 Gado	0.50	1.50	0.80	1.50	0.70	1.00
Pre-processed DP	0.90	1.50	0.90	1.50	1.00	1.50

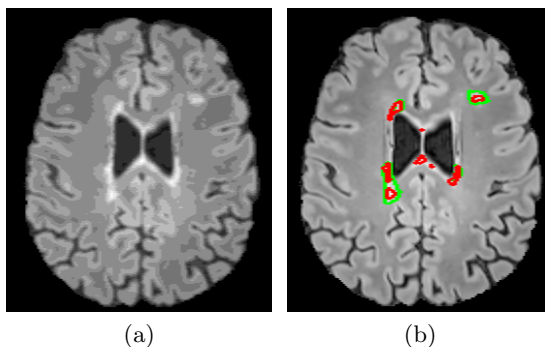
**Table 1.** Ranges of values for criterion  $\chi$  for a node, depending on the modality and the position of the node.

	Lesions near the ventricles		Lesions inside the white matter		Other lesions	
	Minimal value	Maximal value	Minimal value	Maximal value	Minimal value	Maximal value
Volume ( $mm^3$ )	3.85	$6.44 \cdot 10^4$	3.02	$2.28 \cdot 10^3$	9.07	807

**Table 2.** Ranges of values of node volume ( $mm^3$ ) depending on the position of the node.

### 3.2 Preliminary results

A preliminary result is shown for one of the patients in Figure 2. The algorithm manages to detect almost all lesions, but leads to an over-detection in areas of the brain which do not contain ventricles.



**Fig. 2.** Visual results. (a) Pre-processed FLAIR image requantized to 20 grey levels. (b) Contours of manual (in green) and automatic (in red) segmentations.

## 4 Conclusion

We proposed a 3D method for multiple sclerosis detection embedded in a hierarchical approach. The results show that the lesions from the manual segmentation are well included in the segmentation, but at the price of a number of false detections. The method could be improved using other contextual criteria, such as the one from [4], based on the difference of variance between the object of interest and its surroundings.

## References

1. Akhondi-Asl, A., and Hoyte, L., and Lockhart, M. E., and Warfield, S.K. A Logarithmic Opinion Pool Base STAPLE Algorithm for the Fusion of Segmentations With Associated Reliability Weights. *IEEE Transactions on Medical Imaging*, 33(10):1997–2009 (2014).
2. Salembier, P., and Oliveras, A., and Garrido, L. Antiextensive connected operators for image and sequence processing. *IEEE Transactions on Image Processing*. 7, 555–570 (1998).
3. Otsu, N.: A threshold selection method from gray-level histograms. *Automatica*, 11, 285–296 (1975).
4. Xu, Y., and Géraud, T., and Najman, L. Context-based energy estimator: Application to object segmentation on the tree of shapes. *19th IEEE International Conference on Image Processing (ICIP)*.1577-1580 (2012).