

1 **In vitro biopharmaceutical evaluation of**
2 **ciprofloxacin/metal cation complexes for pulmonary**
3 **administration.**

4 **Brillault J^{a, b}, Tewes F^{a, b}, Couet W^{a, b, c}, Olivier JC^{a, b}.**

5 ^a Inserm U1070, Pôle Biologie Santé, 1 Rue Georges Bonnet, Poitiers, France

6 ^b Université de Poitiers, UFR de Médecine et Pharmacie, 15 Rue de l'Hôtel Dieu, Poitiers,
7 France.

8 ^c CHU de Poitiers, Service de Toxicologie-Pharmacocinétique, 2 rue de la Milétrie, Poitiers, France.

9 Authors e-mail address: frederic.tewes@univ-poitiers.fr, william.couet@univ-poitiers.fr,
10 jean.christophe.olivier@univ-poitiers.fr

11

12

13 * To whom correspondence should be sent:

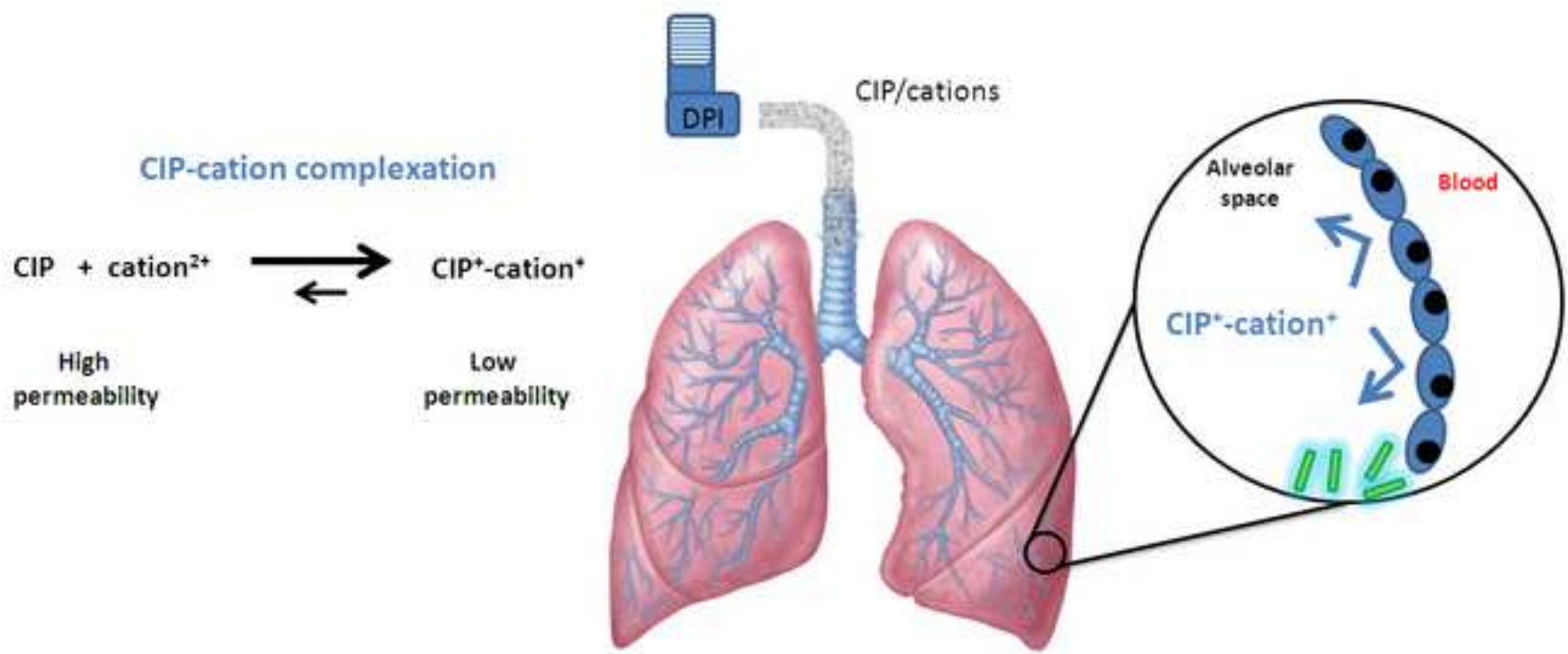
14 E-mail address: julien.brillault@univ-poitiers.fr

15 Postal address: Pôle Biologie Santé, Bâtiment B36/B37, INSERM U1070, 1 Rue Georges

16 Bonnet, TSA 51106, 86073 POITIERS Cedex 9, France

17 Phone numbers: (+) 335 49 454 944, Fax: (+) 335 49 454 378

18



19 **Abstract**

20 Pulmonary delivery of fluoroquinolones (FQs) is an interesting approach to treat lung
21 infections as it may lead to high local concentrations while minimizing systemic exposure.
22 However, FQs have a rapid diffusion through the lung epithelium giving the pulmonary route
23 no advantage compared to the oral route. Interactions between FQs and metal cations form
24 complexes which limit the diffusion through the epithelial barrier and would reduce the
25 absorption of FQs and maintain high concentrations in the lung. The effects of this
26 complexation depend on the FQ and the metal cations and optimum partners should be
27 selected through in vitro experiments prior to aerosol drug formulation. In this study, CIP
28 was chosen as a representative FQ and 5 cations (Ca^{2+} , Mg^{2+} , Zn^{2+} , Al^{3+} , Cu^{2+}) were selected
29 to study the complexation and its effects on permeability, antimicrobial efficacy and cell
30 toxicity. The results showed that the apparent association constants between CIP and
31 cations ranked with the descending order: $\text{Cu}^{2+} > \text{Al}^{3+} > \text{Zn}^{2+} > \text{Mg}^{2+} > \text{Ca}^{2+}$. When a target of 80%
32 complexation was reached with the adequate concentrations of cations, the CIP
33 permeability through the Calu-3 lung epithelial cells was decreased of 50%. Toxicity of the
34 CIP on the Calu-3 cells, with an EC50 evaluated at 7 μM , was not significantly affected by the
35 presence of the cations. The minimum inhibitory concentration of CIP for *Pseudomonas*
36 *aeruginosa* was not affected or slightly increased in the range of cation concentrations
37 tested, except for Mg^{2+} . In conclusion, permeability was the main parameter that was
38 affected by the metal cation complexation while cell toxicity and antimicrobial activity were
39 not or slightly modified. Cu^{2+} , with the highest apparent constant of association and with no
40 effect on cell toxicity and antimicrobial activity of the CIP, appeared as a promising cation for
41 the development of a controlled-permeability formulation of CIP for lung treatment.

42 **Keywords:** FQ-cation interaction, pulmonary delivery, controlled permeability, ciprofloxacin,
43 Calu-3 cells.

44 **Chemical compounds studied in this article**

45 Ciprofloxacin (PubChem CID: 2764)

46

47 **1. Introduction**

48 Pulmonary delivery of antibiotics is an interesting approach to treat lung infections as it may
49 lead to high local concentrations with expected high efficiency while minimizing systemic
50 exposure to reduce side effects. This is especially true for drugs that slowly diffuse through
51 the lung epithelium such as colistin or tobramycin (Gontijo et al., 2014b; Marchand et al.,
52 2015). As a matter of facts, the most common antibiotics used in nebulized therapy have
53 also a low lung epithelial permeability, such as tobramycin, colistimethate or aztreonam
54 (Marchand et al., 2010; Marchand et al., 2015, 2016). On the contrary, fluoroquinolones
55 (FQs) such as ciprofloxacin (CIP) have a rapid diffusion through the lung epithelium (Brillault
56 et al., 2010) and following nebulization FQ lung concentrations quickly equilibrate with the
57 plasma concentrations, giving the pulmonary route of administration no advantages
58 compared to the oral route (Gontijo et al., 2014a). However FQs, which are commonly used
59 in patients to treat lung infections by oral administration (Hurley and Smyth, 2012), could
60 benefit from an aerosolized form that would reduce their diffusion through the lung
61 epithelium. Several formulations have been developed to achieve this goal, such as dry
62 powder of CIP but results showed a rapid pulmonary absorption of CIP into the plasma (Stass
63 et al., 2013). Interactions between FQs and metal cations are well-known to decrease the
64 oral absorption and bioavailability (Marchbanks, 1993). FQs form complexes of various

65 stoichiometries with various metal cations (Uivarosi, 2013). These complexes have a higher
66 molecular weight with an often ionized molecular structure which limits the diffusion
67 through the intestinal barrier. While this interaction is a disadvantage for the oral route, it
68 may be of great interest for the pulmonary route since it would reduce the absorption of FQs
69 and maintain high concentrations of FQs in the lung. Previous work has shown the feasibility
70 of an inhalable calcium-based microparticle formulation of CIP for pulmonary administration
71 (Tewes et al., 2015). In this study calcium (Ca^{2+}) at a high Ca^{2+} /CIP mass ratio of 200
72 decreased the permeability of CIP to 80% in an in vitro model of the pulmonary epithelium.
73 However, other metal cations and FQs could be used for an optimized controlled-
74 permeability formulation. The optimum partners of FQs and metal cations should be
75 selected through in vitro experiments prior to microparticle formulation, in order to
76 maximize the decrease in FQ permeability, concomitant with a lowest toxicity (*i.e.* lowest
77 amount of cations and FQ that would be administered to the lung) and high efficiency.
78 Considering the numerous available FQs (about 30 compounds) and also the various metal
79 cations that can bind to FQs (Ca^{2+} , Mn^{2+} , Mg^{2+} , Zn^{2+} , Fe^{2+} , Fe^{3+} , Al^{3+} , Cu^{2+} , Ag^+ , Co^{2+} , Ni^{2+} , Bi^{3+} ,
80 etc.), several hundreds of possibilities may be considered. It is then necessary to develop
81 first in vitro assays to screen these combinations and predict their interest for the
82 development of new formulations. In this goal, the first point to consider was the ability of
83 FQs and ions to interact together and how it influences the FQ diffusion through the lung.
84 The second point was to verify if the presence of metal cations and their association with the
85 FQ modified the antimicrobial efficacy and cell toxicity of the antibiotic.

86 In this study, CIP was chosen as a representative FQ and the 5 five following cations were
87 used to study the complexation with CIP: Ca^{2+} , Mg^{2+} , Zn^{2+} , Al^{3+} and Cu^{2+} . Assays were carried
88 out in medium and conditions that mimic the biological characteristics of the lung:

89 Interaction between FQs and cations was assayed in a physiological saline buffer, the
90 permeability of CIP in the presence of cations was assayed using the Calu-3 cell line and the
91 antimicrobial efficacy of CIP in the presence of cations was evaluated against *Pseudomonas*
92 *aeruginosa*, a frequent opportunistic infectious agent in the lung. The main purpose of this
93 study was to better understand the interaction between CIP and metal cations in the lung
94 and to help defining the assays needed for a systematic screening of FQ/metal cation
95 complexes for pulmonary delivery.

96

97 **2. Materials & Methods**

98 **2.1. Chemicals**

99 Sodium fluorescein, CIP, CaCl₂, 2H₂O; MgCl₂, 4.5H₂O; ZnSO₄, 7H₂O; CuSO₄, 5H₂O; Al(OH)₃;
100 MOPS, TRIS and HEPES were obtained from Sigma-Aldrich. HPLC-grade acetonitrile was
101 purchased from VWR International (Fontenay sous Bois, France). Mueller Hinton II agar and Mueller
102 Hinton II Broth (cation adjusted) were from Becton Dickinson (Le Pont-de-Claix, France). All other
103 reagents were of analytical grade.

104 **2.2. Apparent constant of association (K)**

105 To study the interaction between FQs and metal cations in medium having ion composition
106 and pH close to biological samples such as the epithelial lining fluid (ELF) of the lung alveoli,
107 CIP was incubated in saline solution (NaCl and KCl) at pH = 7.4. To assess the possible
108 interaction between CIP and buffers, HEPES, MOPS or TRIS buffer was added to a 30 μM CIP
109 solution in water at different concentrations (0, 1, 2.5, 7.5 and 10 mM) and pH was adjusted
110 to 7.4 with 1 M sodium hydroxide. One ml of each solution was placed in 24 well plates and

111 fluorescence intensity emission spectrum of CIP was recorded at room temperature with a
112 plate reader ($\lambda_{exc} = 274$ nm and λ_{em} ranging from 360 to 500 nm; VarioskanFlash, Thermo
113 Scientific, Villebon sur Yvette, France). MOPS and Tris buffers shifted and lowered the
114 spectrum respectively, HEPES buffer did not affect the CIP fluorescence from 360 to 500 nm
115 with a concentration up to 10 mM (data not shown). Moreover, HEPES is generally
116 considered a non-complexing buffer and is suitable for use in solutions with metal ions
117 (Ferreira et al., 2015). This buffer was then chosen for all the following experiments.
118 Fluorescence emission spectrum of CIP in the presence of increasing concentrations of the
119 different cations did not show a shift of the maximum emission wavelength. The set of 274
120 and 408 nm for the excitation and emission wavelengths was chosen for all the titration
121 experiments. Fluorescence titration profiles were obtained by adding cation solutions with
122 concentrations ranging from 500 to 10^5 μ M for calcium and magnesium ions, from 15 to 500
123 μ M for zinc ions and from 15 to 150 μ M for copper and aluminum ions to a 3 μ M CIP
124 solution. Solutions contained 5.3 mM KCl and were maintained at constant pH 7.4 with 10
125 mM HEPES and adjusted with NaCl to a constant ionic strength (155 mM for Mg^{2+} , Zn^{2+} , Al^{3+} ,
126 Cu^{2+} and 1205 mM for Ca^{2+}). The final volume of each sample was 1 ml and fluorescence was
127 recorded using the VarioskanFlash plate reader. Binding isotherm equations for 1:1 and 2:1
128 complexes were built to describe the data according to Hargrove et al. (Hargrove et al., 2010).
129 Equations and mathematical development can be found in the Appendix A. The
130 experimental data were fitted with the two models (1:1 and 2:1) and the comparison was
131 evaluated with the Akaike's information criteria (AIC).

132 **2.3. Apparent permeability (P_{app}) of CIP in the presence of metal cations**

133 **2.3.1. Calu-3 cell culture**

134 Calu-3 cells were purchased from the American Type Culture Collection (Manassas, VA, USA).
135 The cells were cultured in DMEM/Ham's F12 (1/1) supplemented with L-glutamine (2 mM)
136 and 10% foetal calf serum (PAN-Biotech GmbH, Aidenbach, Germany) and incubated at 37°C
137 under 90-95% of relative humidity and 5% v/v of CO₂ in air. The Calu-3 cells at passages 50-
138 60 were seeded at a density of 15 x 10⁴ cells/cm² onto 12-well plate Transwell inserts
139 (Corning Transwell Clear PET membrane 0.4µm, Thermofischer Scientific). The cells were
140 cultured under air-interface conditions for 15 days. The growth medium in the basolateral
141 compartment (1.5 ml) was replaced by fresh medium every other day.

142 **2.3.2. Transport experiments**

143 Transport experiments were conducted in apical-to-basolateral directions as described
144 elsewhere (Brillault et al., 2010). Briefly, on study day the Calu-3 monolayers were quickly
145 rinsed with the transport medium (TM: NaCl 134 mM, KCl 5.3 mM, glucose 5.5 mM, CaCl₂ 1.3
146 mM, MgCl₂ 1 mM, buffered with 10 mM HEPES and adjusted to pH 7.4) and then incubated
147 for 30 min in TM. This transport medium is a modified formula of the classical HBSS medium
148 without bicarbonate or phosphate known to form complexes with the metal ions. Following
149 the equilibration period, the TM in the donor compartment (apical side) was replaced by
150 fresh TM containing 50 µM of CIP with 0, 5, 10, 50 or 100 mM Mg²⁺. After 60 min of
151 incubation at 37°C, sample aliquots were taken from the acceptor compartment (basolateral
152 side). Apparent permeability (P_{app}) was calculated using eqn (1) where Q is the amount of
153 CIP in the acceptor compartment after a time Δt, S is the insert membrane surface (1.12
154 cm²), [CIP₀] is the initial CIP concentration in the donor compartment.

$$155 \quad P_{app} = \frac{Q}{[CIP_0].\Delta t.S} \quad (1)$$

156 Papp versus Mg²⁺ concentration data were analysed with the following equation (eqn 2).

$$157 \quad \% \text{ of } P_{app} = 100 - \frac{(100 - P_{app \text{ Min}}) \cdot [X]^{nH}}{EC50^{nH} + [X]^{nH}} \quad (2)$$

158 Where Papp_{Min} is the low plateau of Papp, [X] the Mg²⁺ concentration, EC50 the Mg²⁺
159 concentration necessary to get 50% of the maximum effect (100- Papp Min) and nH the Hill
160 number. In a second experiment, Papp were determined after cells were incubated in TM
161 with 50 μM of CIP and 40 mM of Ca²⁺, 5.5 mM of Mg²⁺, 1.5 mM of Zn²⁺, 0.1 mM of Al³⁺ or 0.04
162 mM of Cu²⁺ for a 60 min incubation period before sampling in the acceptor compartment.
163 Following the transport studies, routine controls of the monolayer integrity were performed
164 using sodium fluorescein. Briefly, the monolayers were rinsed with TM, fresh TM was added
165 in the basolateral side and a solution of sodium fluorescein in TM (10 μg/ml) was poured in
166 the apical side. The inserts were incubated and samples were taken after 60 min from the
167 acceptor compartment. A threshold P_{app} value of 0.7 x 10⁻⁶ cm.s⁻¹ for fluorescein was
168 retained for the tight junction integrity rejection parameter for all experiments. This
169 corresponds to the transfer of less than 0.5% of the initial amount in the apical compartment
170 (Brillault et al., 2010).

171 **2.3.3. CIP and sodium fluorescein assay**

172 CIP was assayed using a HPLC method with fluorometric detection (λ_{exc} =280 nm; λ_{em} =460
173 nm) using a Jasco FP-920 fluorescence detector (Jasco France, Lisses, France). The stationary
174 phase was an XTerra MS C18 column, 5 μm, 100 × 2.1 mm (Waters, Milford, MA). The mobile
175 phase (flow rate: 0.25 ml/min using a Hitachi L-2130 pump, Hitachi High technologies Co.,
176 Berkshire, UK) consisted of a 20:80 (v:v) mixture of acetonitrile and water containing 0.1%
177 formic acid and 0.2% heptane sulfonic acid. Samples, standards (7 levels with concentrations

178 ranging from 1.56 to 50 ng/ml) and quality controls (3.12, 12.5 and 37.5 ng/ml) prepared in
179 the same solvent were injected (75 μ l using a Hitachi L-2200 autosampler) and eluted over a
180 run time of 6.5 min. The precision and accuracy were less than 15% for the 3 quality control
181 concentrations. Controls with various concentrations of CIP and cations were assayed to
182 ensure that the presence of cations did not interfere with the analysis of CIP.

183 Fluorescein concentrations in TM were measured using the VarioskanFlash plate reader with
184 the excitation and emission wavelengths set at 490 nm and 530 nm, respectively.

185 **2.4. Cytotoxicity assay**

186 Calu-3 cells were seeded in 96 well plates at the density of 5000 cells/well. Incubation
187 medium (100 μ l) was Gibco MEM (Thermo Fisher Scientific) supplemented with 5% (v/v)
188 foetal calf serum. CIP and ions solutions were prepared at concentrations necessary to
189 achieve 80 % of complex. Namely, 150 μ M of CIP were mixed with 40.1 mM of Ca^{2+} , 5.6 mM
190 of Mg^{2+} , 1.6 mM of Zn^{2+} , 0.17 mM of Al^{3+} or 0.125 mM of Cu^{2+} . The cells were then incubated
191 with a serial dilution of these solutions or the CIP alone with concentrations ranging from 0.3
192 to 150 μ M and the plates were returned to the incubator. Control cells were incubated with
193 ions alone with serial dilution from 100 to 0.05 mM for Ca^{2+} and Mg^{2+} and from 5 to 0.0025
194 mM for Zn^{2+} , Al^{3+} and Cu^{2+} . Following a 24 h incubation time, the incubation medium was
195 removed and replaced with HBSS medium and cell viability was evaluated with a MTS assay
196 kit (CellTiter 96[®] AQueous One Solution Cell Proliferation Assay from Promega,
197 Charbonnières-les-Bains, France) according to the manufacturer protocol. The linearity of
198 the response was verified thanks to preliminary experiments. Data were analysed with the
199 following equation (eqn 3).

200
$$\% \text{ of viability} = Top - \frac{(Top - Bottom) \cdot [X]^{nH}}{EC50^{nH} + [X]^{nH}} \quad (3)$$

201 where [X] is the concentration of CIP or ions, Top and Bottom are plateaus in the units of the
202 Y axis, EC50 is the concentration that gives half of the total effect (Top-Bottom) and nH is the
203 Hill number.

204 **2.5. MIC assay**

205 The effect of cation (Mg^{2+} , Ca^{2+} , Al^{3+} , Zn^{2+} , Cu^{2+}) concentrations on the CIP antibacterial
206 activity was assessed by measuring the apparent CIP minimum inhibitory concentration
207 (MIC) against *Pseudomonas aeruginosa* PAO1 (CIP 104116, Institut Pasteur, Paris, France).
208 Bacteria were stored at $-80^{\circ}C$. One day before the experiment, they were grown on Mueller-
209 Hinton II agar for 24 h at $37^{\circ}C$. Prior to MIC test, the strains were grown to logarithmic phase
210 in fresh Mueller-Hinton broth II (MHB) for 2-3 hours and then adjusted to 0.5 McFarland
211 standards. The MIC test was performed using the broth microdilution method: The adjusted
212 cultures were diluted 100-times in MHB containing cations, CIP or both and 100 μ l of these
213 bacterial suspensions were seeded in 96 well plates. CIP concentrations were 8, 4, 2, 1, 0.5,
214 0.25, 0.125, 0.063, 0.031, 0 μ g/ml. Mg^{2+} concentrations were 20, 10, 5, 2, 1, 0.5, 0 mM. Ca^{2+}
215 concentrations were 100, 50, 20, 10, 5, 2, 1, 0.5, 0 mM. Zn^{2+} concentrations were 1, 0.5, 0.1,
216 0.05, 0.02, 0.01, 0 mM. Al^{3+} and Cu^{2+} concentrations were 0.1, 0.05, 0.02, 0.01, 0.005, 0 mM.
217 The growth of bacterial cultures at $37^{\circ}C$ was determined after 18 hours by monitoring the
218 optical density of the culture at 600 nm using the VarioskanFlash plate reader. Controls
219 without bacteria were made to check the absence of contamination of MHB and to evaluate
220 the effect of the cations on the absorbance reading at 600 nm. Controls without CIP were
221 made to assess the effect of the cations on bacterial growth.

222 **2.6. Statistical analysis**

223 Data analysis and modeling were performed using GraphPad Prism version 5.02 for Windows
224 (GraphPad Software, San Diego California USA, www.graphpad.com).

225

226 **3. Results**

227 **3.1. Apparent constants of association**

228 Titration curves of CIP with Mg^{2+} , Ca^{2+} , Zn^{2+} , Al^{3+} and Cu^{2+} ions were made in HEPES buffered
229 saline solutions (Figure 1). Increasing the concentration of Ca^{2+} , Mg^{2+} and Zn^{2+} resulted in an
230 increase in the total fluorescence, while with Al^{3+} and Cu^{2+} the total fluorescence was
231 quenched. The equation corresponding to a 1:1 complex model fitted the data well for all
232 the ions with a satisfactory accuracy for the estimated apparent constant of association
233 (Table 1). On the other hand, the equation from the 2:1 complex model resulted in a very
234 broad estimation of the parameters and higher AIC values (data not shown). This suggested
235 a 1:1 (CIP:metal cation) complex stoichiometry. The estimated apparent association
236 constants ranked with the descending order: $Cu^{2+} > Al^{3+} > Zn^{2+} > Mg^{2+} > Ca^{2+}$, with almost a 9000
237 fold ratio between the minimum and maximum values (Table 1).

238 **3.2. Influence of complexation on Calu-3 cell layer permeability**

239 In a preliminary experiment, Mg^{2+} was chosen to test the influence of the ion concentration
240 on the apical to basolateral permeability of CIP through the Calu-3 cell model. In the control
241 conditions where no magnesium was added to the transport medium, the P_{app} was $0.34 \pm$
242 0.02×10^{-6} cm/s. The results on figure 2A showed a decrease in the CIP P_{app} dependent on

243 the concentration of Mg^{2+} . As estimated by the modeling, 6.7 mM of added magnesium
244 reduced the Papp to 50% of the control and a plateau was reached at 11.5 % of the control
245 Papp (0.04×10^{-6} cm/s). According to the mass balance equations from 1:1 model (Appendix
246 A) and to the apparent constant of association determined in table 1, the percentage of
247 complexation of CIP by Mg^{2+} was calculated and plotted against the Papp (Figure 2B). These
248 data were modeled with eqn 2 and showed that it is necessary to form 86% of complexation
249 to reduce the Papp of 50%. Since the complexation apparently correlated with the decrease
250 in permeability, the transport of CIP was assayed at concentrations of metal cations
251 necessary to reach the same level of complexation. As seen with the Mg^{2+} , a high level of
252 complexation is needed to induce a significant decrease in permeability, but high
253 concentrations of ions, as for Ca^{2+} would lead to hypertonic and deleterious conditions for
254 the cells. For these reasons, a target of 80% complexation was chosen for the next
255 experiment and theoretical ion concentrations were calculated for Ca^{2+} , Mg^{2+} , Zn^{2+} , Cu^{2+} and
256 Al^{3+} . Thus the cells were incubated in the presence of 50 μ M of CIP and 40 mM of Ca^{2+} , 5.5
257 mM of Mg^{2+} , 1.5 mM of Zn^{2+} , 0.1 mM of Al^{3+} or 0.04 mM of Cu^{2+} . Results confirmed that such
258 cation concentrations led to a decrease in CIP permeability close to 50% (Figure 3).

259 **3.3. Cytotoxicity assay**

260 As shown in figure 4A and table 2, ions may be classified into two groups according to their
261 cytotoxicity: the first group (low toxicity) includes Mg^{2+} and Ca^{2+} with an estimated EC50 at
262 36×10^3 and 131×10^3 μ M, respectively; the second group (higher toxicity) includes Zn^{2+} , Al^{3+}
263 and Cu^{2+} with EC50 close to 1×10^3 μ M. Cytotoxicity of the CIP was evaluated in the presence
264 of cations. The highest CIP concentration was 150 μ M and ion concentrations were chosen
265 to reach 80 % complexation. For Cu^{2+} , Mg^{2+} , Al^{3+} and Ca^{2+} , the concentrations were several

266 times lower than their respective EC50 and for Zn²⁺ equal to its EC50 (Table 2). Thus, the
267 presence of ions at concentrations forming 80% complexes with CIP should not increase the
268 cell toxicity of the CIP. As shown in figure 4B and table 2, the EC50 of the CIP over the Calu-3,
269 which was evaluated to be 7 μM, was not apparently affected by the presence of these ions.

270 **3.4. MIC assay**

271 The influence of the cations was also tested on the antibacterial effect of CIP against *P.*
272 *aeruginosa*. In the presence of the ions alone at all concentrations tested, the bacterial
273 growth was similar to the control (data not shown). The MIC of CIP was 0.25 μg/ml. In the
274 presence of Ca²⁺ or Mg²⁺ the MIC of CIP was increased from an ion concentration of 5 mM
275 (33% of complexation) and 2 mM (50% of complexation) onwards, respectively (Figure 5A).
276 In the presence of Zn²⁺, the MIC was unchanged up to a concentration of 500 μM (50% of
277 complexation) where it decreased of one level. The MIC remained unchanged for Al³⁺ and
278 Cu²⁺, except at 50 μM for copper (98% of complexation) (Figure 5B).

279

280 **4. Discussion**

281 Interactions between FQs and metal cations have been widely studied and it has been
282 shown that the presence of metal cations affects both solubility and membrane permeability
283 of FQs (Stojkovic et al., 2014; Zakelj et al., 2007). The consequence for the oral route is a
284 decrease in their bioavailability. However for the pulmonary route, low permeability with
285 high solubility could be of great advantage for antibacterial lung treatment since it would
286 increase the drug residence time in the lung and lower the systemic side effects.

287 Antimicrobial efficacy is also sometimes affected in a positive or negative way (Uivarosi,

288 2013). The mechanisms underlying these effects are not clearly understood and may involve
289 FQs electric charge, molecular weight, lipophilicity, membrane permeability and/or binding
290 with their bacterial enzymatic target. These modifications of the bioavailability or efficacy
291 are not predictable and needs to be evaluated. In this work in vitro assays have been
292 developed to study the interaction between CIP and Mg^{2+} , Ca^{2+} , Zn^{2+} , Al^{3+} , Cu^{2+} .

293 Apparent constants of stability between metal cations and CIP have been evaluated in
294 biological conditions. Since the ionic composition of the ELF is not known, a simple saline
295 buffer (pH 7.4) containing extra-cellular concentrations of sodium, potassium and chloride
296 was chosen. In this medium the apparent association constants K ranked as
297 $Cu^{2+} > Al^{3+} > Zn^{2+} > Mg^{2+} > Ca^{2+}$ (Table 1). These results are in accordance with previous works with
298 an equivalent ranking where the highest interactions were obtained with Al^{3+} and Cu^{2+} (Ma
299 et al., 1997; Seedher and Agarwal, 2010). Interestingly, for Ca^{2+} , Mg^{2+} and Zn^{2+} the
300 interactions increased the fluorescence intensity of the solutions while for Cu^{2+} and Al^{3+} the
301 interactions resulted in a strong decrease of the fluorescence. Similar results had been
302 obtained previously, where Cu^{2+} strongly decreased the CIP fluorescence while Mg^{2+}
303 increased it (Drevensek et al., 2003). This may be due to different sites of interaction on the
304 CIP molecule, which has two main sites of metal chelate formation: one on the carbonyl and
305 carboxyl groups and the second on the piperazin group (Uivarosi, 2013). Quinolone-metal
306 cation chelates may be synthesized as 1:1, 2:1 or 3:1 (FQ:metal cation) complexes depending
307 on the cation, pH and the synthesis process. Here, the titration of CIP in biological conditions
308 showed a spontaneous interaction with metal cations as 1:1 complexes as shown by the
309 modeling of the data (Figure 1). To evaluate if these interactions could affect CIP
310 permeability across the epithelial cells of the lung, CIP apparent permeability was assessed
311 with the Calu-3 cell model in the presence of the different cations (Figure 2 and 3). It should

312 be noted that Mg^{2+} and Ca^{2+} concentrations of about 1 mM are needed for the cell layer
313 integrity since the intercellular junctions that seals the cells together need these two cations
314 to be effective. Thus the transport experiments were made in conditions where Ca^{2+} and
315 Mg^{2+} were already present and would be responsible for 11% and 41% complexation of CIP,
316 respectively. Since the concentration of Mg^{2+} in plasma is close to 1 mM, this also would
317 suggest that in biological fluids CIP is in part present as a Mg^{2+} complex (Jahnen-Dechent and
318 Ketteler, 2012). This might be also the case in the ELF of the alveolar space. For the same
319 reason, in the bacteria cytoplasm where the concentration of free Mg^{2+} is about 1-2 mM
320 (Alatossava et al., 1985), CIP is expected to be present inside the cell mostly as a $CIP:Mg^{2+}$
321 complex. Nevertheless the results showed a strong correlation between metal cation
322 concentration and decrease in CIP apparent permeability through the cells. With Mg^{2+} , a
323 maximum decrease in permeability of about 90% was observed in conditions where the CIP is
324 almost completely complexed. It is not known whether the 10% remaining apparent flux of
325 CIP is due to the diffusion of the $CIP:Mg^{2+}$ complex or of the free CIP. The permeability
326 experiments with the other cations showed that the apparent association constant is useful
327 to predict the effect of the interaction over the cell permeability. The complexation of 80 %
328 of the CIP affected the apparent CIP permeability with the same extent, whatever the nature
329 of the metal cations. This result suggests that only the electric charges brought by the metal
330 cations are responsible for the decrease in permeability. Indeed, in the case of a 1:1
331 $CIP:metal$ cation interaction, a bicationic complex CIP^+-M^+ appears, while CIP is an overall
332 uncharged zwitterionic molecule at pH 7. It is also unlikely that the extra molecular weight
333 brought by the cations would influence the CIP diffusion since they represent only 7 to 19%
334 of the CIP MW. The apparent association constants varied from 100 to 900000 M^{-1} for Ca^{2+}
335 and Cu^{2+} respectively (Table 1). This difference has huge consequences on the amount of

336 cations necessary for the complexation of the CIP. For instance, if a pharmaceutical
337 pulmonary drug formulation is designed to deliver in the ELF 1 $\mu\text{g}/\text{ml}$ (3 μM) of CIP, which is
338 in the range of MIC for the majority of *P. aeruginosa* from environmental sites and patients
339 (Macdonald et al., 2010), the ion concentration in the ELF needed to reach 80% of
340 complexation would be 1600 $\mu\text{g}/\text{ml}$ for Ca^{2+} and only 0.4 $\mu\text{g}/\text{ml}$ for Cu^{2+} . Metal cations are
341 known to be potentially toxic to the cells mainly through reactive oxygen species generation
342 and then increased intra-cellular oxidative stress (Stohs and Bagchi, 1995). Cytotoxicity
343 studies showed that for cations with the highest association constant with CIP (Cu^{2+} , Al^{3+} and
344 Zn^{2+}), the relative cell toxicity was about 100 times higher than for Mg^{2+} and Ca^{2+} (Figure 4 and
345 Table 2). However, in the hypothesis of a pulmonary drug formulation that could deliver in
346 the lining fluid of the alveoli a CIP concentration 50 times higher than the MIC for *P.*
347 *aeruginosa* (i.e. 150 μM), the corresponding concentration of cations necessary to achieve
348 complexation of most of the CIP is several times lower than the EC50 of the cations for the
349 cell toxicity. Thus, the higher toxicity of Cu^{2+} , Al^{3+} or Zn^{2+} may be counterbalanced by the
350 lower concentration needed for complexation compared to that of Ca^{2+} and Mg^{2+} . Several
351 articles have reported that FQ:metal cation complexes had a limited or no effect on the
352 antibacterial activity. For instance, complexes of CIP with Zn^{2+} or Cu^{2+} have been shown to
353 have no influence on the MIC against *S. aureus*, *P. aeruginosa* or *K. pneumoniae* (López-
354 Gresa et al., 2002) while complexes of levofloxacin with Mg^{2+} slightly decreased the
355 antibacterial activity with the same strains (Drevenšek et al., 2006). Here MIC assays have
356 been done to evaluate this influence over *P. aeruginosa* (Figure 5). The growth medium for
357 the bacteria already contains limited amounts of Ca^{2+} and Mg^{2+} (0.5 and 0.4 mM,
358 respectively). However, due to the low concentrations and the weak constants of association
359 of these two ions, their influence can be considered negligible. None or slight increase in

360 MIC have been shown in the range of cation concentration tested, except for Mg^{2+} at 10 mM
361 where its presence greatly decreased the antimicrobial activity of CIP. This is in agreement
362 with a previous study with sparfloxacin, ciprofloxacin, norfloxacin and pefloxacin where Mg^{2+}
363 was shown to decrease the antibacterial activity of the FQs in correlation with a lower
364 uptake into the bacteria. These results suggested that Mg^{2+} impaired the CIP uptake into the
365 bacteria (Lecomte et al., 1994).

366 In conclusion, this work showed the influence of metal cations on permeability and
367 antimicrobial activity of the CIP in the goal of pulmonary administration. Permeability was
368 the main parameter that was affected by the metal cation complexation while cell toxicity or
369 antimicrobial activity were not or slightly modified, as shown by the in vitro experiments.

370 While Al^{3+} is suspected of brain toxicity, Cu^{2+} seems to be an interesting cation for the
371 development of a controlled-permeability formulation of CIP for lung treatment and further
372 studies will evaluate the pharmacokinetics of CIP after lung administration of CIP: Cu^{2+} loaded
373 microparticles. More generally, in the goal of selecting the best FQ:metal cation couple for
374 lung delivery formulation, the association constant between FQ and metal cation should be
375 estimated first since this parameter is of great influence on permeability. Lipophilicity of the
376 FQ was not addressed in this study but it should also be taken into account because the
377 effect of complexation over permeability could have a major effect for the most lipophilic
378 drugs such as moxifloxacin, grepafloxacin or pefloxacin. Toxicity and antimicrobial activity
379 should be then investigated with the most interesting couples. Further studies will focus on
380 the effects of metal cation interactions with FQs of different lipophilicities and on in vivo
381 pharmacokinetic evaluations of novel FQ-metal cation formulations.

382

383 References

384

- 385 Alatosava, T., Jutte, H., Kuhn, A., Kellenberger, E., 1985. Manipulation of intracellular magnesium
386 content in polymyxin B nonapeptide-sensitized *Escherichia coli* by ionophore A23187. *Journal of*
387 *bacteriology* 162, 413-419.
- 388 Brillault, J., De Castro, W.V., Couet, W., 2010. Relative contributions of active mediated transport and
389 passive diffusion of fluoroquinolones with various lipophilicities in a Calu-3 lung epithelial cell model.
390 *Antimicrobial agents and chemotherapy* 54, 543-545.
- 391 Drevenšek, P., Košmrlj, J., Giester, G., Skauge, T., Sletten, E., Sepčić, K., Turel, I., 2006. X-Ray
392 crystallographic, NMR and antimicrobial activity studies of magnesium complexes of
393 fluoroquinolones – racemic ofloxacin and its S-form, levofloxacin. *Journal of Inorganic Biochemistry*
394 100, 1755-1763.
- 395 Drevensek, P., Turel, I., Poklar Ulrich, N., 2003. Influence of copper(II) and magnesium(II) ions on the
396 ciprofloxacin binding to DNA. *J Inorg Biochem* 96, 407-415.
- 397 Ferreira, C.M.H., Pinto, I.S.S., Soares, E.V., Soares, H.M.V.M., 2015. (Un)suitability of the use of pH
398 buffers in biological, biochemical and environmental studies and their interaction with metal ions - a
399 review. *RSC Advances* 5, 30989-31003.
- 400 Gontijo, A.V., Brillault, J., Gregoire, N., Lamarche, I., Gobin, P., Couet, W., Marchand, S., 2014a.
401 Biopharmaceutical characterization of nebulized antimicrobial agents in rats: 1. Ciprofloxacin,
402 moxifloxacin, and grepafloxacin. *Antimicrobial agents and chemotherapy* 58, 3942-3949.
- 403 Gontijo, A.V., Gregoire, N., Lamarche, I., Gobin, P., Couet, W., Marchand, S., 2014b.
404 Biopharmaceutical characterization of nebulized antimicrobial agents in rats: 2. Colistin.
405 *Antimicrobial agents and chemotherapy* 58, 3950-3956.
- 406 Hargrove, A.E., Zhong, Z., Sessler, J.L., Anslyn, E.V., 2010. Algorithms for the determination of binding
407 constants and enantiomeric excess in complex host : guest equilibria using optical measurements.
408 *New journal of chemistry = Nouveau journal de chimie* 34, 348-354.
- 409 Hurley, M., Smyth, A., 2012. Fluoroquinolones in the treatment of bronchopulmonary disease in
410 cystic fibrosis. *Therapeutic advances in respiratory disease* 6, 363-373.
- 411 Jahnen-Dechent, W., Ketteler, M., 2012. Magnesium basics. *Clinical Kidney Journal* 5, i3-i14.
- 412 Lecomte, S., Baron, M.H., Chenon, M.T., Coupry, C., Moreau, N.J., 1994. Effect of magnesium
413 complexation by fluoroquinolones on their antibacterial properties. *Antimicrobial agents and*
414 *chemotherapy* 38, 2810-2816.
- 415 López-Gresa, M.P., Ortiz, R., Perelló, L., Latorre, J., Liu-González, M., García-Granda, S., Pérez-Priede,
416 M., Cantón, E., 2002. Interactions of metal ions with two quinolone antimicrobial agents (cinoxacin
417 and ciprofloxacin): Spectroscopic and X-ray structural characterization. *Antibacterial studies. Journal*
418 *of Inorganic Biochemistry* 92, 65-74.
- 419 Ma, H.H., Chiu, F.C., Li, R.C., 1997. Mechanistic investigation of the reduction in antimicrobial activity
420 of ciprofloxacin by metal cations. *Pharmaceutical research* 14, 366-370.
- 421 Macdonald, D., Cuthbertson, L., Doherty, C., Campana, S., Ravenni, N., Taccetti, G., Govan, J.R., 2010.
422 Early *Pseudomonas aeruginosa* infection in individuals with cystic fibrosis: is susceptibility testing
423 justified? *The Journal of antimicrobial chemotherapy* 65, 2373-2375.
- 424 Marchand, S., Gobin, P., Brillault, J., Baptista, S., Adier, C., Olivier, J.C., Mimoz, O., Couet, W., 2010.
425 Aerosol therapy with colistin methanesulfonate: a biopharmaceutical issue illustrated in rats.
426 *Antimicrobial agents and chemotherapy* 54, 3702-3707.
- 427 Marchand, S., Gregoire, N., Brillault, J., Lamarche, I., Gobin, P., Couet, W., 2015. Biopharmaceutical
428 Characterization of Nebulized Antimicrobial Agents in Rats: 3. Tobramycin. *Antimicrobial agents and*
429 *chemotherapy* 59, 6646-6647.

430 Marchand, S., Gregoire, N., Brillault, J., Lamarche, I., Gobin, P., Couet, W., 2016. Biopharmaceutical
431 Characterization of Nebulized Antimicrobial Agents in Rats. *Antimicrobial agents and chemotherapy*.
432 Marchbanks, C.R., 1993. Drug-drug interactions with fluoroquinolones. *Pharmacotherapy* 13, 23S-
433 28S.
434 Seedher, N., Agarwal, P., 2010. Effect of metal ions on some pharmacologically relevant interactions
435 involving fluoroquinolone antibiotics. *Drug metabolism and drug interactions* 25, 17-24.
436 Stass, H., Weimann, B., Nagelschmitz, J., Rolinck-Werninghaus, C., Staab, D., 2013. Tolerability and
437 pharmacokinetic properties of ciprofloxacin dry powder for inhalation in patients with cystic fibrosis:
438 a phase I, randomized, dose-escalation study. *Clinical therapeutics* 35, 1571-1581.
439 Stohs, S.J., Bagchi, D., 1995. Oxidative mechanisms in the toxicity of metal ions. *Free radical biology &*
440 *medicine* 18, 321-336.
441 Stojkovic, A., Tajber, L., Paluch, K.J., Djuric, Z., Parojcic, J., Corrigan, O.I., 2014. Biopharmaceutical
442 characterisation of ciprofloxacin-metallic ion interactions: comparative study into the effect of
443 aluminium, calcium, zinc and iron on drug solubility and dissolution. *Acta pharmaceutica* 64, 77-88.
444 Tewes, F., Brillault, J., Lamy, B., O'Connell, P., Olivier, J.C., Couet, W., Healy, A.M., 2015.
445 Ciprofloxacin-loaded inorganic-organic composite microparticles to treat bacterial lung infection.
446 *Molecular pharmaceutics*.
447 Uivarosi, V., 2013. Metal complexes of quinolone antibiotics and their applications: an update.
448 *Molecules (Basel, Switzerland)* 18, 11153-11197.
449 Zakelj, S., Berginc, K., Ursic, D., Kristl, A., 2007. Influence of metal cations on the solubility of
450 fluoroquinolones. *Die Pharmazie* 62, 318-320.

451

452

453

Apparent association constant K (M⁻¹)		
Ca²⁺	1 x 10²	[13-188]
Mg²⁺	7.2 x 10²	[176-1272]
Zn²⁺	27 x 10²	[1792-3614]
Al³⁺	880 x 10²	[56540-119406]
Cu²⁺	9069 x 10²	[849417-964359]

454 Table 1. Apparent association constant between CIP and ions (with the 95% confidence interval) in
455 saline solution at pH 7.4.

456

457

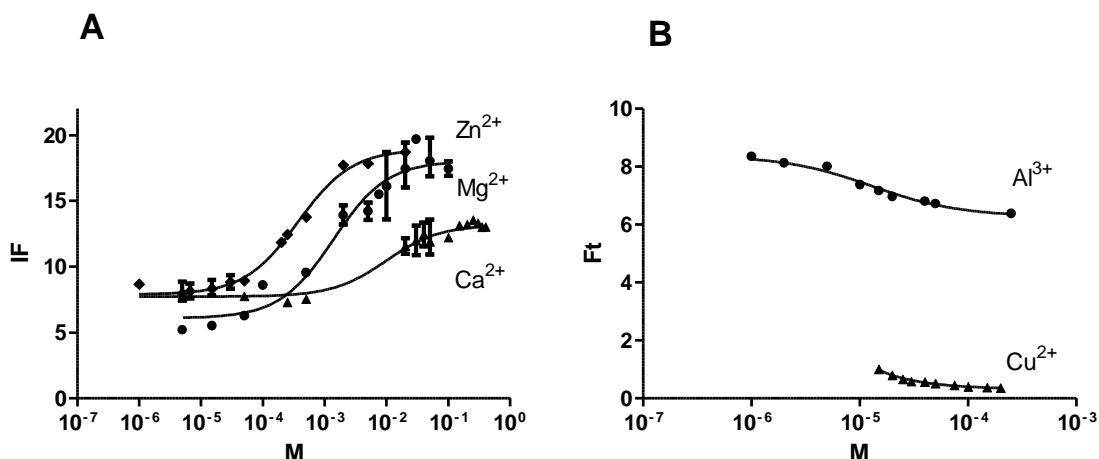
Calu-3 cell toxicity EC50 (μM)			
		CIP	7 [5-11]
Ca²⁺	36 x 10³ [22-61 x 10 ³]	CIP:Ca²⁺	5 [4-6]
Mg²⁺	131 x 10³ [111-152 x 10 ³]	CIP:Mg²⁺	11 [8-14]
Zn²⁺	0.9 x 10³ [0.7-1.1 x 10 ³]	CIP:Zn²⁺	3 [3-4]
Al³⁺	1.0 x 10³ [0.7-1.4 x 10 ³]	CIP:Al³⁺	7 [5-9]
Cu²⁺	1.1 x 10³ [0.7-1.5 x 10 ³]	CIP:Cu²⁺	14 [12-16]

458 Table 2. Cell toxicity EC50 of cations alone or CIP:cations mix in 80% complexation conditions over a
459 24 h incubation period. Values are given with their 95% confidence interval.

460

461

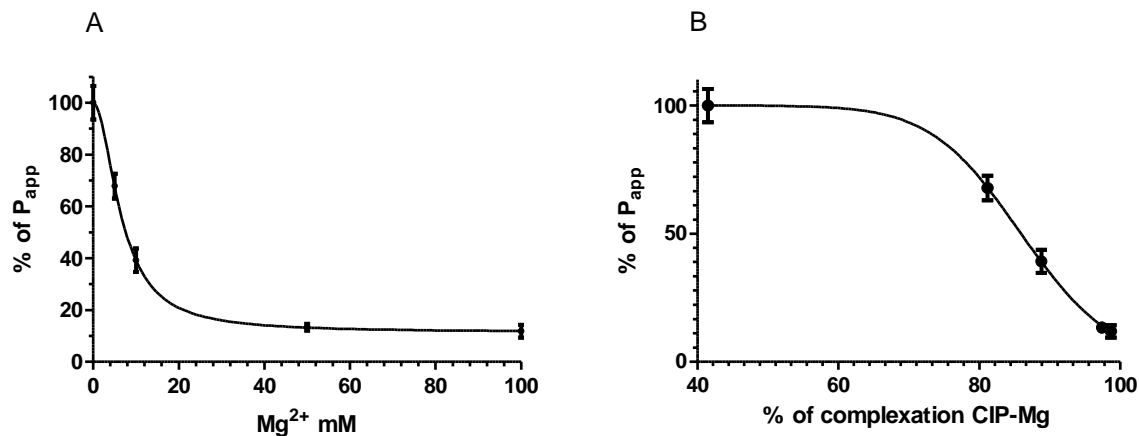
462



464

465 **Figure 1. Titration curve of the total fluorescence against the molar concentration of ions.** 3 μ M of
 466 CIP were mixed with increasing concentrations of Mg²⁺, Ca²⁺, Zn²⁺ (A), Al³⁺ or Cu²⁺ (B). Total
 467 fluorescence (Ft) has been recorded at $\lambda_{exc} = 274$ nm and $\lambda_{em} = 408$ nm. Data are expressed as
 468 means \pm range (n=2-3) and were fitted with the 1:1 complex model.

469



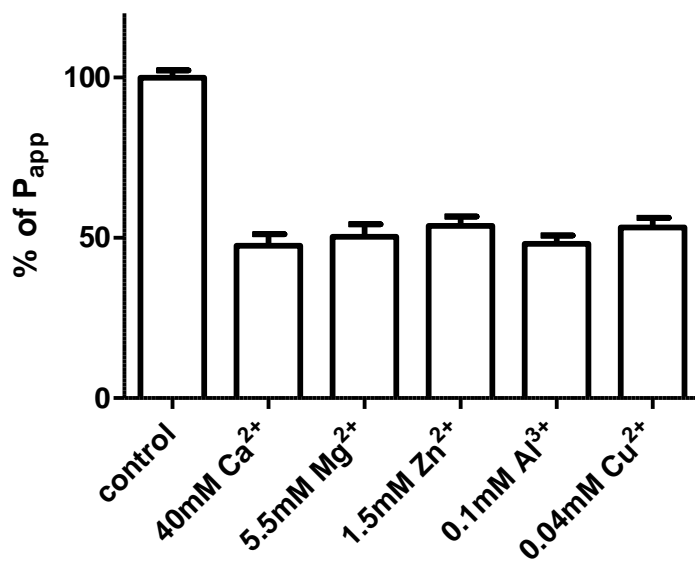
470

471

472 **Figure 2. Influence of added Mg²⁺ concentration and Mg-complexation on the apparent**
 473 **permeability for CIP.** The apical-to-basolateral permeability of the Calu-3 cell layer for CIP (50 μ M)
 474 was evaluated in the presence of increasing concentrations of Mg²⁺ (A). Permeability was also plotted
 475 against the % of complexation calculated with the constant of association between CIP and Mg²⁺ (B).
 476 Results were expressed as a the percentage of the CIP P_{app} ($0.34 \pm 0.02 \times 10^{-6}$ cm/s) determined
 477 with no Mg²⁺ added to the transport medium (means \pm S.E.M., n=3).

478

479



480

481

482 **Figure 3. P_{app} of CIP in conditions of 80% complexation.** 50 μM of CIP were incubated with
 483 adequate concentrations of Ca²⁺, Mg²⁺, Zn²⁺, Al³⁺ or Cu²⁺ ions to achieve a proportion of 80% of
 484 CIP:metal cation complexation in solution. Data are expressed as the percentage of the control P_{app}
 485 for CIP (means ± S.E.M., n= 8 to 12). Each condition was significantly different from control using
 486 one-way ANOVA and Bonferroni's post hoc test (P<0.001).

487

488

489

490

491

492

493

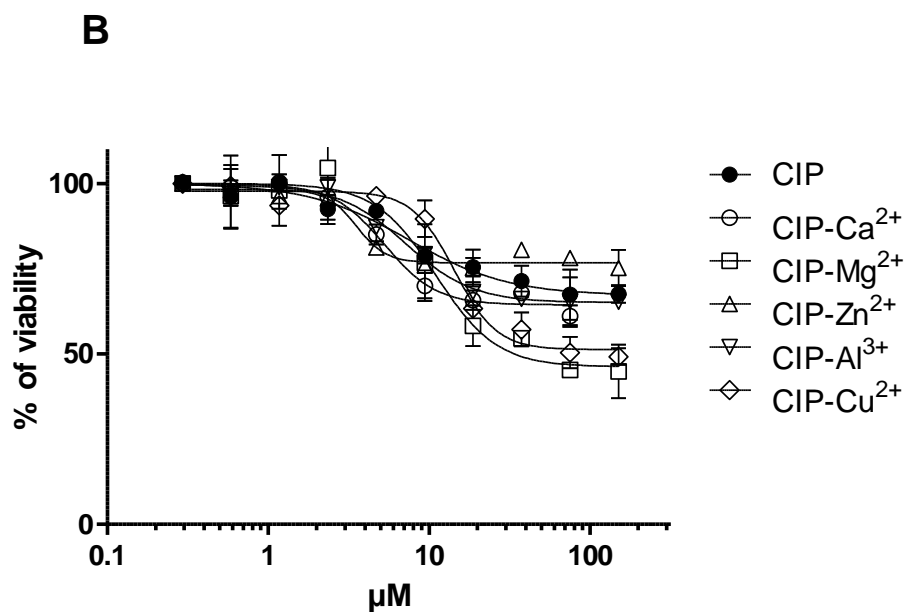
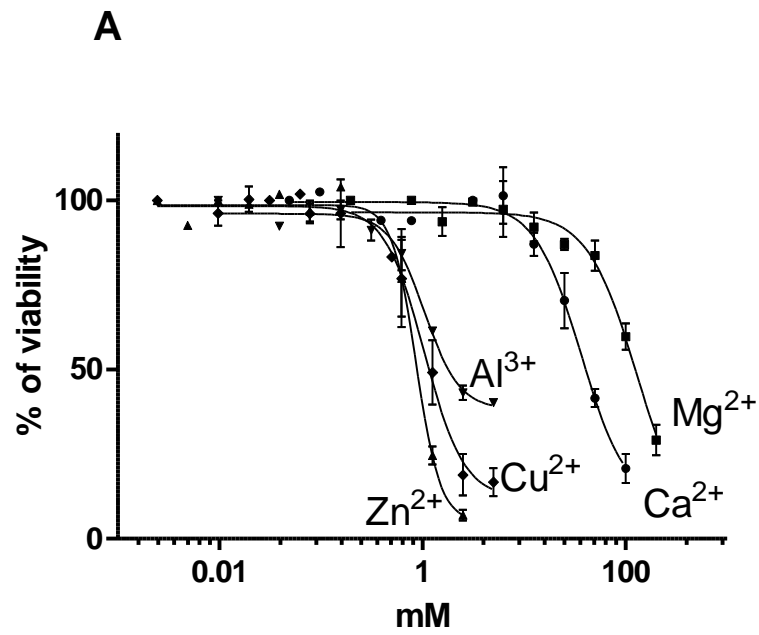
494

495

496

497

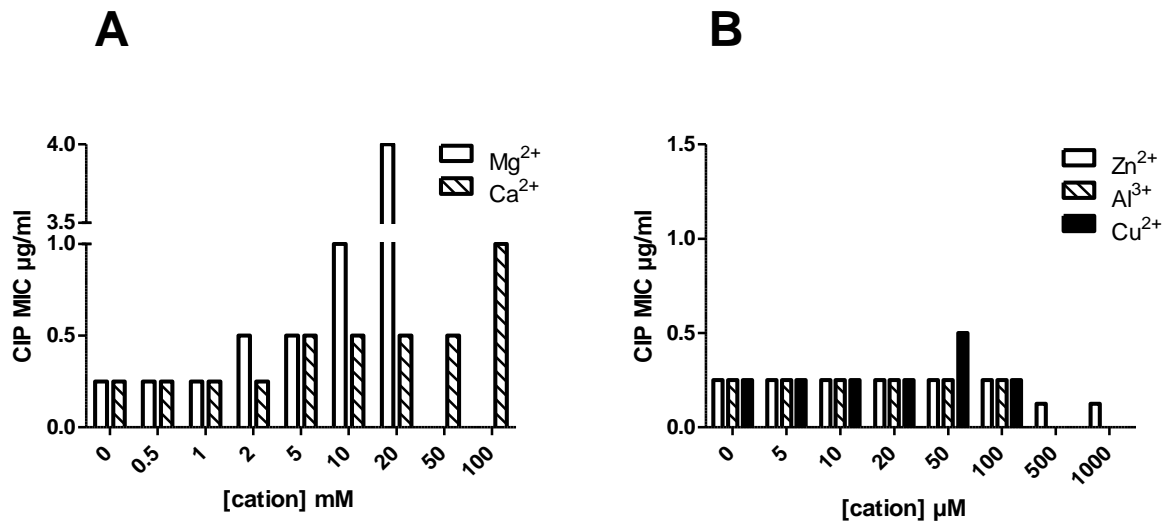
498



499

500 **Figure 4. Toxicity of CIP, ions or CIP:ions complexes on Calu-3 cells.** Cells were incubated for 24 h
 501 with different concentrations of cations (A) and different concentrations of CIP in the presence of
 502 cations (B). Cytotoxicity was evaluated with MTS test kit. 100% correspond to the control condition
 503 where cells were cultured for 24 h without CIP and/or cations. Data are expressed as mean \pm S.E.M.
 504 (n=3).

505



507
 508 **Figure 5. CIP apparent MIC against *P. aeruginosa* in Mueller-Hinton broth II in the presence of**
 509 **increasing concentrations of Ca^{2+} , Mg^{2+} (A), Zn^{2+} , Al^{3+} or Cu^{2+} (B). MICs represent non-continuous**
 510 **data and are accurate to only plus or minus one two-fold dilution.**

511

512

513

514

515

516

517 **Appendix A.**

518 For 1:1 complex (CIP:I) between ciprofloxacin (CIP) and a metal ion (I), the equilibrium,
 519 apparent binding constant K and mass balance equations are expressed in eqn (1)-(4).



521
$$K = \frac{[\text{CIP:I}]}{[\text{CIP}][\text{I}]} \quad (2)$$

522
$$[\text{CIP}]_t = [\text{CIP}] + [\text{CIP:I}] \quad (3)$$

523
$$[\text{I}]_t = [\text{I}] + [\text{CIP:I}] \quad (4)$$

524 Where $[\text{CIP}]_t$ and $[\text{I}]_t$ are the the concentrations of the total CIP and metal ions and $[\text{CIP}]$ and
 525 $[\text{I}]$ are the concentrations of the free CIP and metal ions. $[\text{CIP:I}]$ is the concentration of the
 526 complex. Rearranging eqn (2) with eqn (3) and (4) yields to the quadratic equation (5) from
 527 which the eqn (6) is a solution.

528
$$[\text{CIP}]^2 + \left([\text{I}]_t - [\text{CIP}]_t + \frac{1}{K}\right)[\text{CIP}] - \frac{[\text{CIP}]_t}{K} = 0 \quad (5)$$

529
$$[\text{CIP}] = \frac{-\left([\text{I}]_t - [\text{CIP}]_t + \frac{1}{K}\right) + \sqrt{\left([\text{I}]_t - [\text{CIP}]_t + \frac{1}{K}\right)^2 + \frac{4[\text{CIP}]_t}{K}}}{2} \quad (6)$$

530 The observed fluorescence (F_t) is the sum of the CIP and CIP:I complex fluorescences ($FCIP$
 531 and $FCIP:I$), considering the ions are not fluorescent:

532
$$F_t = FCIP + FCIP:I = \delta_{\text{CIP}}[\text{CIP}] + \delta_{\text{CIP:I}}[\text{CIP:I}] \quad (7)$$

533 where δ_{CIP} and $\delta_{\text{CIP:I}}$ are the proportionality coefficients between concentration and
 534 fluorescence for the CIP and the complex respectively. Rearranging eqn (7) with eqn (3) and
 535 into eqn (6) gives the final 1:1 binding isotherm (eqn 8).

536

$$537 \quad Ft = (\delta CIP - \delta CIP:I) \left\{ \frac{\left([CIP]_t - [I]_t \frac{1}{K} \right) + \sqrt{\left([I]_t - [CIP]_t + \frac{1}{K} \right)^2 + \frac{4[CIP]_t}{K}}}{2} \right\} + \delta CIP:I [CIP]_t \quad (8)$$

538 For 2:1 complex (CIP₂:I) between ciprofloxacin (CIP) and a metal ion (I), the equilibriums,
 539 binding constants K₁ and K₂ and mass balance equations are expressed in eqn (9)-(14). For
 540 eqn (14), the assumption that the initial concentration of ions ([I]_t) is much higher than the
 541 initial concentration of CIP ([CIP]_t) leads to a simplified equation. Experimentally, ion
 542 concentrations were always at least 5 times higher than CIP.



$$545 \quad K_1 = \frac{[CIP:I]}{[CIP][I]} \quad (11)$$

$$546 \quad K_2 = \frac{[CIP_2:I]}{[CIP:I][CIP]} \quad (12)$$

$$547 \quad [CIP]_t = [CIP] + [CIP:I] + 2[CIP_2:I] \quad (13)$$

$$548 \quad [I]_t = [I] + [CIP:I] + [CIP_2:I] \approx [I] \quad (14)$$

549 Rearranging eqn (11) and (12) with eqn (13) and (14) yields to the quadratic equation (15)
 550 from which the eqn (16) is a solution.

$$551 \quad [CIP]^2 + \left(\frac{1+K_1[I]_t}{2K_1K_2[I]_t} \right) [CIP] - \frac{[CIP]_t}{2K_1K_2[I]_t} = 0 \quad (15)$$

$$552 \quad [CIP] = \frac{-\left(\frac{1+K_1[I]_t}{2K_1K_2[I]_t} \right) + \sqrt{\left(\frac{1+K_1[I]_t}{2K_1K_2[I]_t} \right)^2 + \frac{2[CIP]_t}{K_1K_2[I]_t}}}{2} \quad (16)$$

553 The observed fluorescence (F_t) is the sum of the CIP, CIP:I and CIP2:I complex fluorescences
554 (FCIP, FCIP:I and FCIP2:I), considering that the ions are not fluorescent:

$$555 \quad F_t = FCIP + FCIP:I + FCIP2:I = \delta_{CIP}[CIP] + \delta_{CIP:I}[CIP:I] + \delta_{CIP2:I}[CIP2:I] \quad (17)$$

556 where δ_{CIP} , $\delta_{CIP:I}$ and $\delta_{CIP2:I}$ are the proportionality coefficients between concentration
557 and fluorescence for the CIP and the complexes. Rearranging eqn (17) with eqn (11) and (12)
558 gives the final 2:1 binding isotherm (eqn 18) together with eqn (16).

$$559 \quad F_t = (\delta_{CIP} + \delta_{CIP:I} K_1 [I]_t)[CIP] + \delta_{CIP2:I} K_1 K_2 [I]_t [CIP]^2 \quad (18)$$

560

561