



**HAL**  
open science

# VPAC1 receptor (Vipr1)-deficient mice exhibit ameliorated experimental autoimmune encephalomyelitis, with specific deficits in the effector stage

Catalina Abad, Bhavaani Jayaram, Laurine Becquet, Yuki Wang, Sue M O'dorisio, James A Waschek, Yossan-Var Tan

## ► To cite this version:

Catalina Abad, Bhavaani Jayaram, Laurine Becquet, Yuki Wang, Sue M O'dorisio, et al.. VPAC1 receptor (Vipr1)-deficient mice exhibit ameliorated experimental autoimmune encephalomyelitis, with specific deficits in the effector stage. *Journal of Neuroinflammation*, 2016, 13 (1), pp.169. 10.1186/s12974-016-0626-3 . inserm-01339481

**HAL Id: inserm-01339481**

**<https://inserm.hal.science/inserm-01339481v1>**

Submitted on 29 Jun 2016

**HAL** is a multi-disciplinary open access archive for the deposit and dissemination of scientific research documents, whether they are published or not. The documents may come from teaching and research institutions in France or abroad, or from public or private research centers.

L'archive ouverte pluridisciplinaire **HAL**, est destinée au dépôt et à la diffusion de documents scientifiques de niveau recherche, publiés ou non, émanant des établissements d'enseignement et de recherche français ou étrangers, des laboratoires publics ou privés.

RESEARCH

Open Access



# VPAC1 receptor (*Vipr1*)-deficient mice exhibit ameliorated experimental autoimmune encephalomyelitis, with specific deficits in the effector stage

Catalina Abad<sup>1,2</sup>, Bhavaani Jayaram<sup>1</sup>, Laurine Becquet<sup>2</sup>, Yuki Wang<sup>1</sup>, M Sue O'Doriso<sup>3</sup>, James A. Waschek<sup>1</sup> and Yossan-Var Tan<sup>1,2\*</sup>

## Abstract

**Background:** Vasoactive intestinal peptide (VIP) and pituitary adenylyl cyclase-activating polypeptide (PACAP) are two highly homologous neuropeptides. In vitro and ex vivo experiments repeatedly demonstrate that these peptides exert pronounced immunomodulatory (primarily anti-inflammatory) actions which are mediated by common VPAC1 and VPAC2 G protein-coupled receptors. In agreement, we have shown that mice deficient in PACAP ligand or VPAC2 receptors exhibit exacerbated experimental autoimmune encephalomyelitis (EAE). However, we observed that VIP-deficient mice are unexpectedly resistant to EAE, suggesting a requirement for this peptide at some stage of disease development. Here, we investigated the involvement of VPAC1 in the development of EAE using a VPAC1-deficient mouse model.

**Methods:** EAE was induced in wild-type (WT) and VPAC1 knockout (KO) mice using myelin oligodendrocyte glycoprotein 35–55 (MOG<sub>35–55</sub>), and clinical scores were assessed continuously over 30 days. Immune responses in the spinal cords were determined by histology, real-time PCR and immunofluorescence, and in the draining lymph nodes by antigen-recall assays. The contribution of VPAC1 expression in the immune system to the development of EAE was evaluated by means of adoptive transfer and bone marrow chimera experiments. In other experiments, VPAC1 receptor analogs were given to WT mice.

(Continued on next page)

\* Correspondence: yossan-var.tan@inserm.fr

James Waschek and Yossan-Var Tan are co-senior authors.

<sup>1</sup>Department of Psychiatry, David Geffen School of Medicine, University of California, Los Angeles, USA

<sup>2</sup>Inserm U905, Institute for Research and Innovation in Biomedicine (IRIB), University of Rouen, Normandy, France

Full list of author information is available at the end of the article



(Continued from previous page)

**Results:** MOG<sub>35–55</sub>-induced EAE was ameliorated in VPAC1 KO mice compared to WT mice. The EAE-resistant phenotype of VPAC1 KO mice correlated with reduced central nervous system (CNS) histopathology and cytokine expression in the spinal cord. The immunization phase of EAE appeared to be unimpaired because lymph node cells from EAE-induced VPAC1 KO mice stimulated *in vitro* with MOG exhibited robust proliferative and Th1/Th17 responses. Moreover, lymph node and spleen cells from KO mice were fully capable of inducing EAE upon transfer to WT recipients. In contrast, WT cells from MOG-immunized mice did not transfer the disease when administered to VPAC1 KO recipients, implicating a defect in the effector phase of the disease. Bone marrow chimera studies suggested that the resistance of VPAC1-deficient mice was only minimally dependent on the expression of this receptor in the immunogenic/hematopoietic compartment. Consistent with this, impaired spinal cord inductions of several chemokine mRNAs were observed in VPAC1 KO mice. Finally, treatment of WT mice with the VPAC1 receptor antagonist PG97-269 before, but not after, EAE induction mimicked the clinical phenotype of VPAC1 KO mice.

**Conclusions:** VPAC1 gene loss impairs the development of EAE in part by preventing an upregulation of CNS chemokines and invasion of inflammatory cells into the CNS. Use of VPAC1 antagonists in WT mice prior to EAE induction also support a critical role for VPAC1 signaling for the development of EAE.

**Keywords:** Multiple sclerosis, Experimental autoimmune encephalomyelitis, Neuropeptide, VPAC1, Neuroimmunomodulation

## Background

Vasoactive intestinal peptide (VIP) and pituitary adenylate cyclase-activating polypeptide (PACAP) are two highly homologous neuropeptides of the secretin/glucagon superfamily [1, 2]. They act through three class II G protein-coupled receptors (GPCRs) officially named by International Union of Basic and Clinical Pharmacology (IUPHAR) as VPAC1, VPAC2, and PAC1 [3]. Whereas VPAC1 and VPAC2 bind either peptide with equally high affinity, PAC1 is known to be a PACAP-preferring receptor. Signaling through these receptors mainly involves the G $\alpha$ s protein and leads to activation of adenylyl cyclase and cAMP production [1]. However, they can also increase inositol triphosphate and intracellular calcium levels through the phospholipase C pathway as well as modulate the activity of phospholipase D, tyrosine kinases, and calcium and potassium channels [1].

Multiple studies in the early 1990s reported the expression of VIP, PACAP, and their receptors in the immune system and were followed up by the discovery of their immunomodulatory properties through a direct action on diverse immune cell subtypes such as T lymphocytes, macrophages, and dendritic cells [4]. These cells constitutively express VPAC1. VPAC2 expression, on the other hand, is very low in resting lymphocytes and macrophages but strongly induced in macrophages after exposure to stimuli such as lipopolysaccharide (LPS), the major component of the outer membrane of Gram-negative bacteria, and in lymphocytes activated with an anti-CD3 antibody [5, 6]. In addition, constitutive expression of VPAC2 in dendritic cells and of PAC1 in macrophages has been reported [7, 8].

VIP and PACAP modulate multiple aspects of immunity, and notably, they are potent anti-inflammatory peptides [4]. In this regard, initial *in vitro* studies described that VIP and PACAP strongly inhibited the production of a wide range of pro-inflammatory cytokines and chemokines by macrophages stimulated with LPS but stimulated the production of anti-inflammatory cytokines such as interleukin (IL)-10 [9–11]. The efficient blockade of the inflammatory response by these peptides appears to be mediated by their inhibitory action on key signaling pathways common to the expression of several cytokines, notably NF- $\kappa$ B and MAPK [12]. Besides VIP and PACAP actions on innate immunity, other *in vitro* studies demonstrated that they modulate adaptive immune responses by acting on T helper (Th) differentiation [13, 14]. In concurrence with their generally anti-inflammatory actions, it was found that VIP and PACAP inhibit Th1 and potentiate Th2 responses. This was demonstrated to be mediated at least in part by actions on dendritic cell co-stimulatory molecules and cytokine/chemokine production [7, 11, 15–17]. Similarly, human plasmacytoid dendritic cells activated with CpG oligonucleotides stimulate CD4<sup>+</sup> T cell proliferation and cytokine production *ex vivo*. The addition of VIP during dendritic cell activation resulted in decreased interferon (IFN) $\gamma$  production and CD4<sup>+</sup> T cell proliferation, generating a Th2-like response [18]. Other *in vitro* and *in vivo* studies have suggested that VIP and PACAP directly promote specific Th2 cell survival and Th2 memory cell generation [19–21].

More recent studies have demonstrated the ability of these peptides to induce regulatory T cells (Tregs) [22–27].

Due to their anti-inflammatory actions on innate and adaptive immune function, VIP and PACAP administration reduced clinical symptoms and pathological changes in murine models of several inflammatory and Th1-driven autoimmune conditions, including rheumatoid arthritis, Crohn's disease, and multiple sclerosis (MS) [28–30].

We recently began to examine the relevance of the endogenous neuropeptides and the role of receptor subtypes by gene deletion in the murine model of experimental autoimmune encephalomyelitis (EAE), a widely used model for MS [31]. MS, the most common neurodegenerative condition in young adults, is a chronic and inflammatory demyelinating disease of the central nervous system (CNS) [32]. Despite its complex pathogenesis, considerable evidence suggests that autoimmune cells reacting against myelin peptides play a major role in the initiation and development of the disease. In fact, EAE is induced by immunizing mice with myelin peptides in order to generate encephalitogenic T cells in the proximal lymph nodes. Both IFN $\gamma$ -producing Th1 and IL-17-producing Th17 pro-inflammatory cells have been implicated in the pathogenesis of EAE. These T cells migrate into the CNS where, once reactivated, they initiate an inflammatory cascade. We have previously found that PACAP- or VPAC2-targeted gene deletions in mice lead to exacerbated disease, supporting the anti-inflammatory properties of PACAP and VPAC2 [33]. However, we unexpectedly found that VIP knockout (KO) mice developed ameliorated EAE and reduced inflammation in models of LPS-induced endotoxemia and chemically-induced colitis [34–36]. A critical question to be addressed is which VIP receptor mediates this paradoxical resistance to inflammation. Here, we have examined the relevance of VPAC1 in autoimmune CNS inflammation by subjecting VPAC1-deficient mice to EAE.

## Methods

### Mice

Eight to 12-week-old female C57BL/6 (wild-type (WT)) and VPAC1 KO mice [37] were used. Mice were maintained in specific pathogen-free barrier facilities at the University of California, Los Angeles (UCLA). All husbandry and experimental procedures were performed in compliance with the USDA Animal Welfare Act regulations section 2.31(d)(5), Institutional Policies and Guidelines, and adhered to all principles stated in the *Guide for the Care and Use of Laboratory Animals*. The experimental protocol was approved by the UCLA Animal Resource Committee (ARC# 1993-302). VPAC1 KO mice were fed gruel every day starting after weaning on postnatal day 35 to avoid intestinal dysfunction.

### EAE induction

EAE was induced as previously described [38]. Briefly, mice were lightly anesthetized with isoflurane, and a solution containing 100  $\mu$ g of MOG<sub>35–55</sub> (GLBiochem) in complete Freund's adjuvant (Difco) supplemented with 5 mg/ml *Mycobacterium tuberculosis* H37Ra (Difco) was injected subcutaneously in the flanks. Two hundred nanograms of Pertussis toxin (List Biological Laboratories) was administered intraperitoneally (i.p.) to the mice on the immunization day as well as 2 days later. For VPAC1 antagonist pretreatment studies, WT mice were given i.p. either PBS or 10 nmol of the VPAC1 antagonist PG97-269 [39] daily for 2 weeks. Two days after the last dose of the VPAC1 antagonist, EAE was induced as above. For antagonist/agonist treatment studies during ongoing EAE, the VPAC1 antagonist PG97-269 at 10 nmol per mouse or the VPAC1 agonist (Ala<sup>11, 22, 28</sup>)VIP at 5 nmol per mouse were administered i.p. for five consecutive days starting on day 3 after mice immunization with MOG. EAE symptoms were scored daily on a 0–4 scale as follows: 0, no symptoms; 1, wobbling gait; 2, hind leg paralysis; 3, paralysis of two limbs; and 4, moribund or dead.

### Histopathology

The spinal cords were collected 30 days after EAE induction, fixed in 4 % PFA overnight and then gradually dehydrated in ethanol until paraffin embedding. Six-micrometer sections were prepared with a microtome and stained with luxol fast blue (for myelin) and hematoxylin-eosin (for stroma and immune infiltrates) following standard protocols. Histopathology was scored as follows: 0, normal appearance of tissue; 1, scarce immune cell infiltration and demyelination; 2, perivascular infiltrates with a few areas of demyelination; and 3, increasing severity of perivascular cuffing with extension into adjacent tissue and large areas of demyelination.

### Immunofluorescence

Fourteen days after EAE induction, mice were perfused with 4 % PFA and the spinal cords were collected, post-fixed overnight, and cryoprotected with a 20 % sucrose solution. Cryostat 15- $\mu$ m sections were prepared and incubated with anti-CD4 (BD Pharmingen) and anti-laminin (Sigma-Aldrich) antibodies in PBS/1 % bovine serum albumin (BSA)/0.3 % Triton X-100 at 4 °C overnight. Then, sections were incubated for 40 min at room temperature with Alexa 594- and FITC-conjugated secondary antibodies. Slides were mounted using VECTASHIELD with DAPI (Vector Labs).

### Real-time RT-PCR

The brain and spinal cords were collected on day 5, at the clinical peak (days 14–15) or 30 days post-EAE

induction and mechanically homogenized in Trizol (Sigma-Aldrich). RNA was extracted according to the manufacturer's instructions. Before cDNA synthesis, RNA samples were treated with DNase I (DNA-free kit, Ambion) according to the manufacturer's protocol. One micrograms of total RNA was reverse-transcribed using the iScript kit from Bio-Rad (Hercules). Quantitative real-time RT-PCR for the cytokines tumor necrosis factor (TNF) $\alpha$ , IFN $\gamma$ , IL-4, IL-6, IL-10, IL-17, and IL-23p19; the chemokines regulated on activation, normal T cell expressed and secreted (RANTES)/CCL5, monocyte chemoattractant protein (MCP)-1/CCL2, MCP-2/CCL8, monokine induced by gamma interferon (MIG)/CXCL9, interferon gamma-induced protein 10 (IP-10)/CXCL10, and MIP-3 $\alpha$ /CCL20; the chemokine receptors, CCR1, CCR2, and CCR5; the adhesion molecules intercellular adhesion molecule (ICAM) and vascular cell adhesion molecule (VCAM); and the transcription factor Foxp3 was performed using the iQ SYBR Green Supermix from Bio-Rad. Primers and real-time PCR conditions are described in the Additional file 1: Table S1. For relative quantification, the relative expression was determined by the  $2^{-\Delta\Delta C_t}$  method ( $C_t$  denoting the threshold cycle of PCR amplification at which product is first detected by fluorescence), which compares the amount of target gene amplification, normalized to the hypoxanthine-guanine phosphoribosyltransferase (HPRT) endogenous reference [40]. Melting curves established the purity of the amplified band. For each probe set, PCR products were sequenced to confirm identity.

#### Ex vivo studies

Axillary lymph nodes were collected 14 days after EAE induction and cell suspensions prepared by tapping the organs through a 40- $\mu$ m nylon mesh. Cells were cultured at  $1 \times 10^6$  cells/ml in 96-well plates in complete RPMI 1640 (25 mM HEPES, 2 mM L-glutamine, 1 % penicillin/streptomycin, and 2 % FBS), in the presence of MOG or ovalbumin (OVA) at 10  $\mu$ g/ml. For measurement of cytokines (IFN $\gamma$ , IL-17A, IL-10), supernatants were collected 48 h later and stored at  $-20^\circ\text{C}$  until analysis by ELISA, using antibody kits from PeproTech and eBioscience following manufacturer's instructions. Because the levels of IL-4 protein were below the detection threshold by ELISA, we determined the expression of this cytokine by real-time RT-PCR. Thus, cells were also collected for RNA extraction with Trizol after the 48-h restimulation period. In order to assess cell proliferation, [ $^3\text{H}$ ]-thymidine (1  $\mu$ Ci/well) was added after 2 days of culture for 18 additional hours, and incorporated radioactivity was measured on a  $\beta$ -scintillation counter (Beckman).

#### Adoptive transfer

The lymph node and spleen cells were collected from EAE-induced WT and VPAC1 KO mice on day 12 and restimulated in vitro at  $1.5 \times 10^6$  or  $3 \times 10^6$  cells/ml, respectively, in complete RPMI with 30  $\mu$ g/ml of MOG<sub>35–55</sub>. Three days later, cells ( $5 \times 10^6$  splenocytes and  $5 \times 10^6$  lymph node cells) were intravenously (i.v.) injected into naïve WT or VPAC1 KO recipients. Mice also received 200 ng of pertussis toxin i.p. on days 0 and 2, and clinical symptoms of EAE were scored on a daily basis.

#### Bone marrow chimeras

C57BL/6 WT mice were  $\gamma$ -irradiated at 4–6 weeks of age with 550 rads twice with a gap of 2 h to deplete BM immune hematopoietic elements. Following irradiation, mice were provided antibiotics (neomycin sulfate 2 mg/ml) for 2 weeks. Four hours after irradiation,  $10^7$  BM cells from either VPAC1 KO (CD45.2) or WT (CD45.1) mice (isolated by flushing the femur with a needle and syringe) were intravenously infused to irradiated mice (CD45.1). The percent donor composition was determined by measuring the percentage of CD45.2 (donor) vs. CD45.1 (recipient) in whole blood cells in the recipient mice before EAE induction. Mice were maintained in quarantine for 6 weeks before EAE induction as above.

#### Statistical analysis

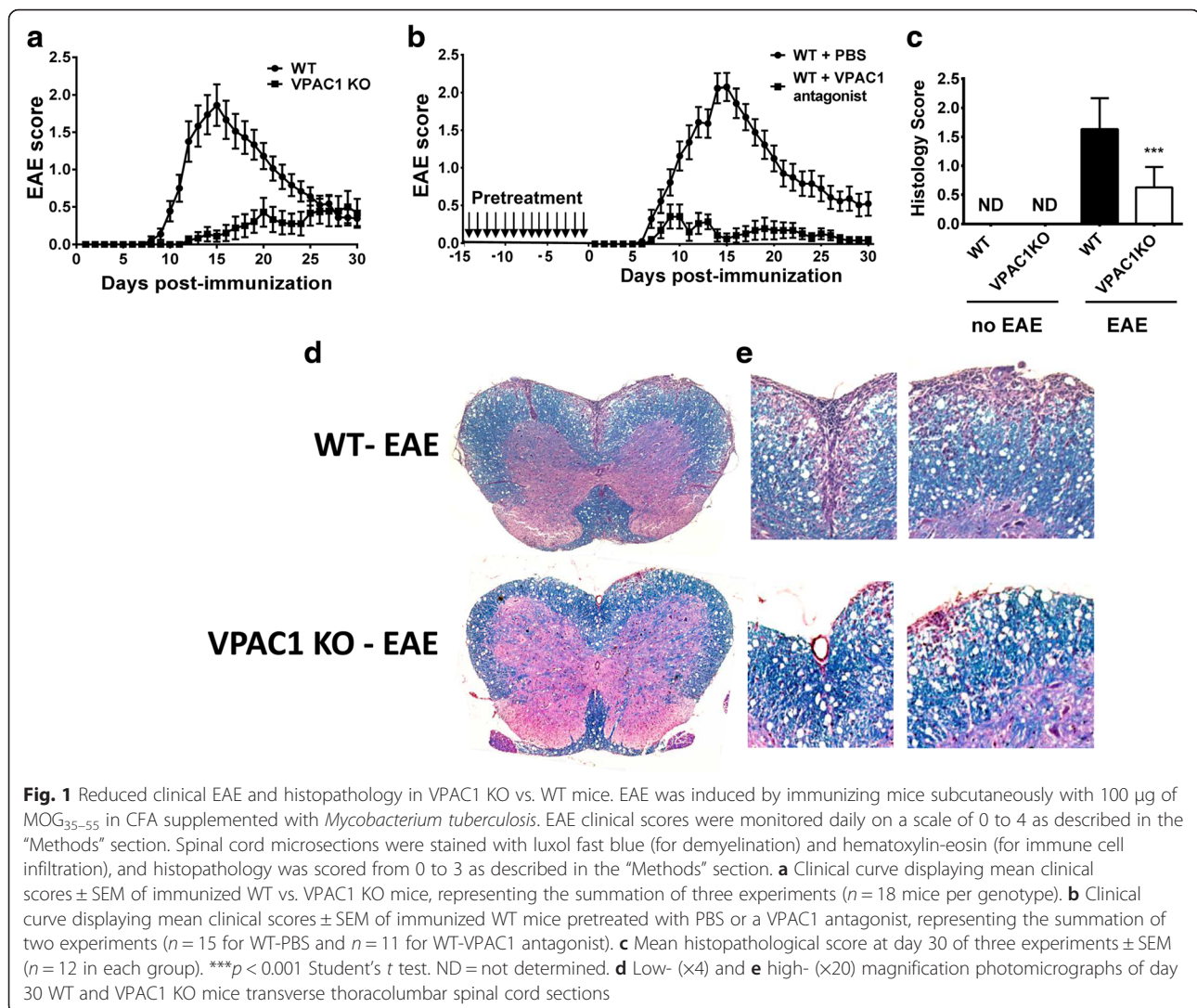
Differences between groups were evaluated using GraphPad Prism 6 software (GraphPad Software, San Diego, CA) and Student's  $t$  test with Welch's correction. The level of significance was set at  $P < 0.05$ . Results are expressed as mean  $\pm$  SEM.

## Results

#### VPAC1 KO mice exhibit reduced clinical and histopathological features of EAE

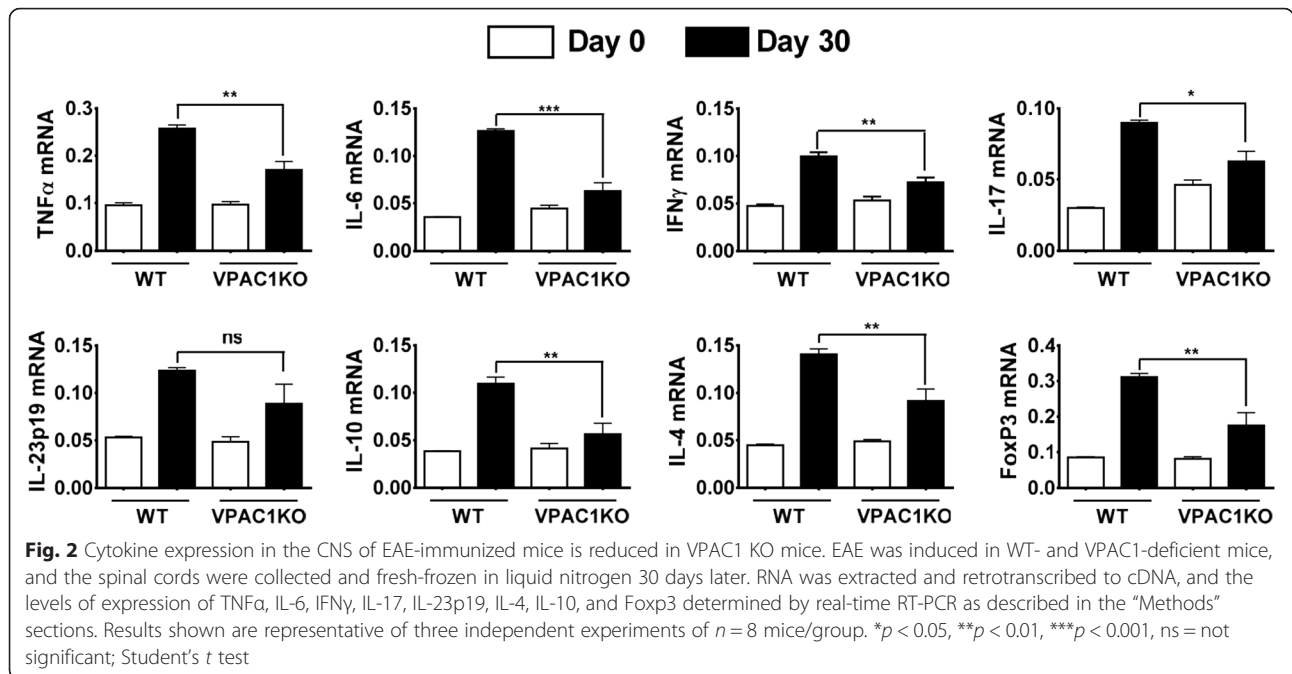
In order to investigate the role of the VPAC1 receptor in the development of EAE, we immunized WT and VPAC1 KO mice with MOG<sub>35–55</sub> and monitored the appearance of clinical symptoms of the disease on a daily basis. We found that EAE clinical symptoms were significantly ameliorated in VPAC1 KO mice. A curve representing the summation of three experiments is shown on Fig. 1a. Indeed, they exhibited lower average cumulative scores ( $11.2 \pm 2.7$  vs  $25.5 \pm 3.4$ ,  $^{**}p < 0.01$ ) compared to WT mice (calculated as the average sum of all EAE clinical scores in a diseased mouse). In addition, the onset of the disease was delayed in those VPAC1 KO mice who developed EAE (KO average onset of  $19.7 \pm 1.5$  vs  $10.5 \pm 0.4$  days in WT mice,  $^{***}p < 0.001$ ). Overall, in the total of three experiments, the incidence of the disease was 50 % for VPAC1 KO mice (9 mice out of 18 developed EAE symptoms) vs. 84 %





for WT mice (15 out of 18). To mimic the effect of genetic loss of VPAC1, WT mice were treated with the VPAC1 receptor-specific antagonist (PG97-269 [22]) for 2 weeks prior to EAE immunization. This pretreatment led to a reduced clinical EAE similar to VPAC1 KO mice, although no delay in the onset of the disease was observed (Fig. 1b). These data suggest a critical requirement of the VPAC1 receptor for the development of the full disease. Interestingly, treatment of WT mice with a VPAC1 antagonist for 5 days starting on day 3 post-EAE induction did not block EAE development (Additional file 2: Figure S1), suggesting that either the absence of VPAC1 signaling before disease induction or a long-term blockade of signaling through this receptor is necessary to impede the full development of EAE. Moreover, a short-term treatment with the VPAC1 agonist starting on day 3 post-immunization prevented the development of EAE (Additional file 2: Figure S1), in agreement with the anti-inflammatory activities of VIP.

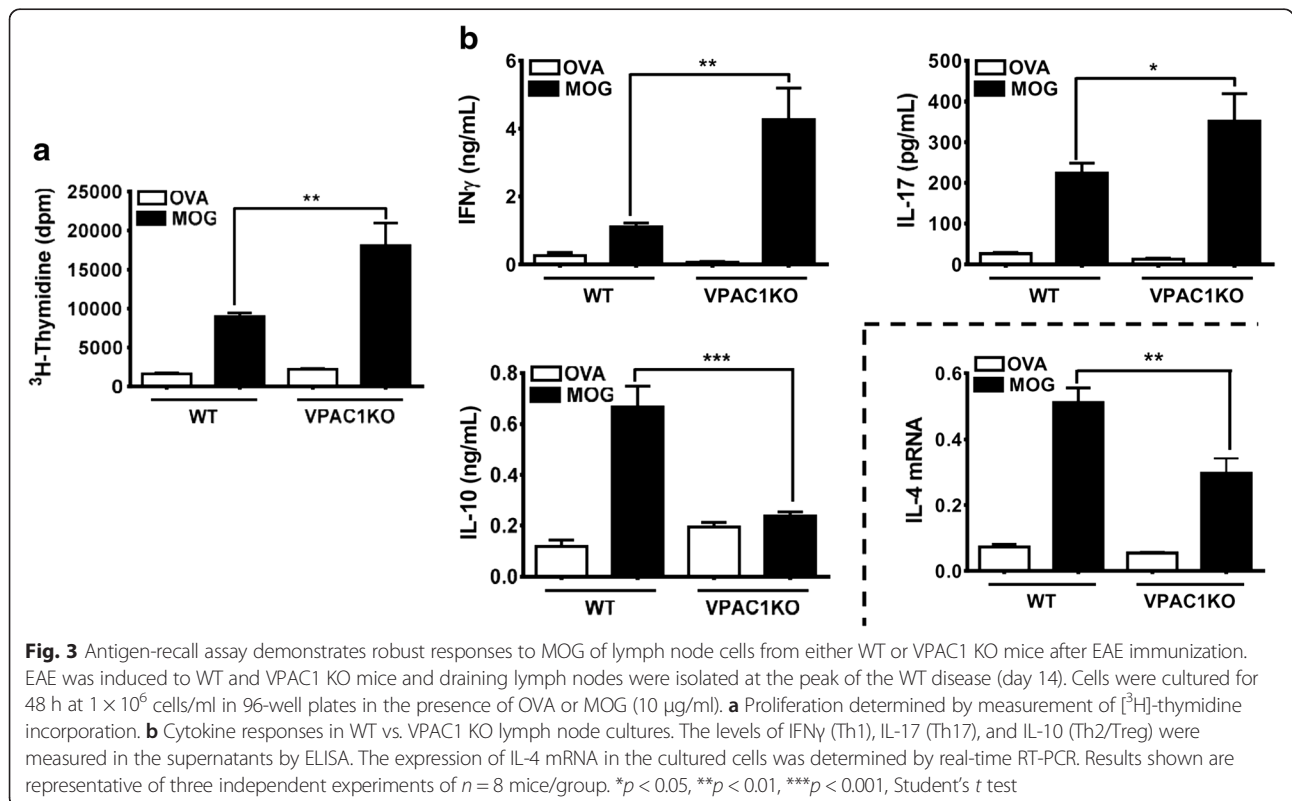
In accordance with the reduced clinical disease, the spinal cords of VPAC1 KO mice exhibited minor immune cell infiltration as well as reduced demyelination compared to WT mice 30 days after the induction of the disease, as reflected in the average histological scores ( $0.6 \pm 0.1$  in VPAC1 KO vs  $1.6 \pm 0.1$  in WT mice, \*\*\* $p < 0.001$ , Fig. 1c) and representative micrographs (Fig. 1d, e). Furthermore, corroborating their lower degree of inflammation in the CNS, we found a generalized lower expression of pro-inflammatory and anti-inflammatory cytokines in the CNS of VPAC1 KO vs. WT mice (TNF $\alpha$ , IL-6, IFN $\gamma$ , IL-17, IL23p19, IL-4, and IL-10, Fig. 2), as determined on day 30 by real-time PCR. A reduction in the mRNA expression of Foxp3, a transcription factor that specifically marks Tregs, was also observed in the spinal cords of the KO mice. These results show a limited clinical response of VPAC1 KO mice to EAE induction, associated with a reduced immunological response in the CNS.



**VPAC1 KO mice exhibit robust Th1 and Th17 cell responses against MOG despite the lack of clinical EAE**

The lack of EAE in VPAC1-deficient mice could be due to a defect in MOG immunization. To test this hypothesis, we performed antigen-recall assays in which responses to MOG were examined in cultured lymph node cells isolated

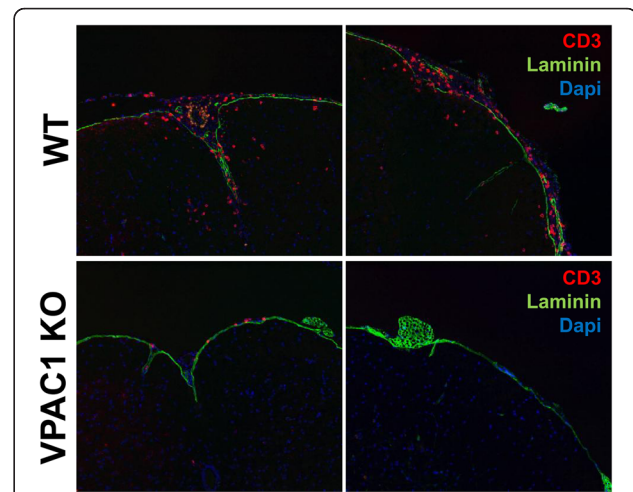
from WT or VPAC1 KO mice 14 days after EAE induction. We found that both WT- and VPAC1-deficient mice cells exhibited robust proliferation and production of IFN $\gamma$  (Th1) and IL-17 (Th17) when stimulated with MOG but not with an irrelevant antigen (OVA) (Fig. 3). Moreover, these were significantly stronger in KO than in



WT cultures, suggesting exacerbated Th1 and Th17 responses in these mice. Interestingly, the levels of the anti-inflammatory cytokine IL-10 in the supernatants of VPAC1 KO cultures were significantly lower than those in WT cultures, where this cytokine was highly produced in response to MOG. This cytokine has been shown to be produced by Th2 and regulatory T cells. In addition, the levels of IL-4 (a Th2 cytokine) in our culture supernatants were not detectable by ELISA, but we found a significantly diminished expression of IL-4 mRNA in the MOG-stimulated lymphoid cells of immunized VPAC1 KO mice compared to WT. In summary, the lack of VPAC1 leads to an altered Th response, with enhanced Th1 and Th17 but reduced Th2 profiles, and possibly a diminution of Treg cells. In addition, the ability of Th cells from immunized VPAC1 KO mice to respond to MOG indicate that the mice do not exhibit a defect in the immunization phase of EAE and that the resistance in the mutant mice is not likely due to a compensatory suppression of immunization secondary to VPAC1 loss.

#### Impaired immune cell infiltration in the CNS of VPAC1 KO mice

During the earliest phases of the pathogenesis of EAE, small numbers of encephalitogenic cells enter the subarachnoid space, where it has been suggested that they are reactivated by local antigen-presenting cells [41]. They then cross the blood-brain barrier (BBB) and infiltrate the CNS parenchyma where they initiate an inflammatory response characterized by the recruitment of increasing numbers of immune cells. Our data suggest that VPAC1 KO mice are capable of developing highly reactive lymphocytes in response to EAE immunization. However, these cells may exhibit defects in their ability to migrate into the CNS or fail to amplify the inflammatory response. Thus, in addition to our histopathological studies performed 30 days post-immunization, we determined by immunofluorescence the presence of lymphocytes in the spinal cords of VPAC1 KO vs. WT mice at a time corresponding to the peak of inflammation in WT mice (14 days after immunization) (Fig. 4). We found that, at this time point, significant numbers of T cells had accumulated in the meninges and infiltrated the CNS parenchyma of the WT mice. However, there was no lymphocyte infiltration in the CNS parenchyma of VPAC1 KO-immunized mice. Moreover, there were few/absent lymphocytes in the perivascular areas and in the meninges. These data suggest that VPAC1 KO mice may exhibit a deficit in T cell homing to both the CNS perivascular/meningeal areas and to subsequent CNS parenchyma invasion, a phenotype similar to that we observed in VIP KO mice [17].



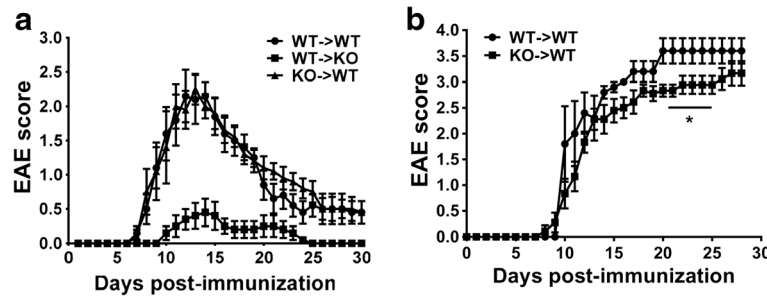
**Fig. 4** VPAC1-deficient mice exhibit reduced immune cell infiltration into the CNS meninges and parenchyma after EAE induction. EAE was induced in WT and VPAC1 KO mice as described in the “Methods”, and the spinal cord tissues were obtained on day 14 post-immunization. Cryostat sections were stained by immunofluorescence for CD4 (Alexa 594), laminin (FITC), and nuclei (DAPI). Representative photomicrographs at  $\times 20$  magnification are shown. Results shown are representative of two independent experiments of  $n = 3$  mice/group

#### Absence of VPAC1 receptors in either T cells or bone marrow-derived hematopoietic cells does not account for the lack of full EAE development in the VPAC1 KO mice

The previous experiments suggest that the ameliorated clinical EAE in VPAC1 KO mice is due to a defect in the effector phase of the disease rather than impaired immunization. To corroborate this possibility, we first performed adoptive transfer studies in which we administered WT or VPAC1 KO immune cells from EAE-immunized mice into WT or VPAC1 KO recipients (Fig. 5a). We found that WT recipients receiving cells from WT donors developed EAE with an onset on day ~8, a peak on days 12–13, and a subsequent recovery phase. These mice developed a similar EAE clinical course when receiving cells from MOG-immunized VPAC1 KO mice, supporting the full encephalitogenic potential of these cells as suggested by antigen-recall assays. In contrast, when VPAC1 KO mice received WT cells, they developed only minor EAE symptoms. Together, the adoptive transfer studies suggest that lymphocytes from the KO mice maintain the potential to induce EAE but that they are not capable of triggering a full inflammatory response in a VPAC1-deficient environment.

The adoptive transfer studies indicated that loss of VPAC1 in encephalitogenic T cells is not sufficient to explain the EAE resistance of VPAC1 KO mice. Peripheral myeloid cells are clearly required to produce full EAE [42, 43], so it remains possible that VPAC1 loss on these or other hematopoietic cells explains the EAE resistance in these mice. To investigate this possibility,





**Fig. 5** The expression of VPAC1 in the immune/hematopoietic compartment is not critical for the development of full EAE. Adoptive transfer and bone marrow chimera studies were performed in order to investigate the contribution of VPAC1 receptor expression in immune/hematopoietic cells to the resistant phenotype observed in VPAC1 KO mice. **a** For adoptive transfer experiments,  $5 \times 10^6$  splenocytes and  $5 \times 10^6$  lymph node cells from EAE-immunized WT and VPAC1 KO mice restimulated with MOG *in vitro* for 3 days were injected *i.v.* into naive WT or VPAC1 KO recipients. The EAE clinical curve of a representative experiment out of three with  $n = 5$  for each group is shown. **b** In order to generate bone marrow (BM) chimeric mice, WT mice were  $\gamma$ -irradiated ( $n = 5$  for WT→WT and  $n = 9$  for VPAC1 KO→WT) and received  $10^7$  BM cells from either VPAC1 receptor KO (CD45.2) or WT (CD45.2) mice. Six weeks later, mice were MOG<sub>35–55</sub>-immunized for EAE induction. \* $p < 0.05$ , Student's *t* test

we performed bone marrow chimera experiments in which CD45.1 WT mice were  $\gamma$ -irradiated and received CD45.2 WT or CD45.2 VPAC1 KO bone marrow cells. Reconstitution analyses indicated that 85–90 % of immune cells were donors derived in recipients. WT→WT chimeric mice were found to develop chronic EAE with an onset on days 8–9 and no remission of the disease (Fig. 5b). WT chimeric mice with a deletion of VPAC1 in the hematopoietic compartment (KO→WT) also developed EAE in a similar fashion, although the severity of the disease was slightly, although significantly lower between days 20 and 25 than that in WT→WT mice. These results suggest that VPAC1 deficiency in the non-CNS hematopoietic compartment plays a role but is minimally responsible for the remarkable resistance to clinical EAE development found in VPAC1 KO mice.

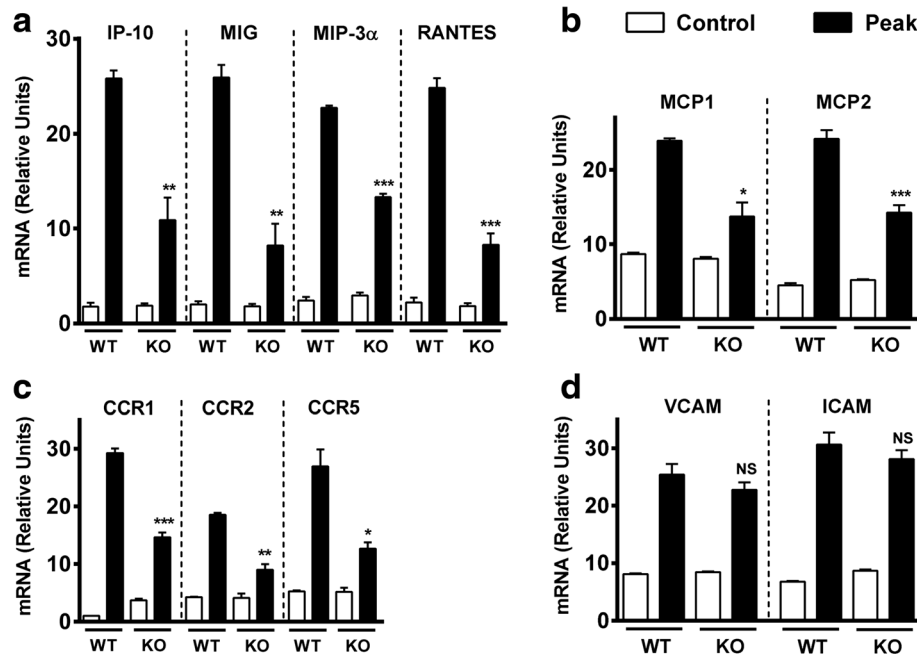
#### The expression of chemokines is reduced in the CNS of MOG-immunized VPAC1 KO vs. WT mice

Our adoptive transfer data suggests that the intrinsic ability of VPAC1 KO immune cells to enter the CNS is not defective. We next investigated by real-time RT-PCR whether or not the expression of chemokines in the spinal cord is impaired in these mice at the peak of EAE (Fig. 6). We found that the expression of RANTES/CCL5, MCP-1/CCL2, and MCP-2/CCL8 and the chemokine receptors CCR1, CCR2, and CCR5 were significantly reduced in VPAC1 KO mice. In addition, we determined the expression of MIG/CXCL9, IP-10/CXCL10, and MIP3- $\alpha$ /CCL20, which are purported to be Th1 (MIG and IP-10)- and Th17-specific (CCL20) chemokines, and found then to be also significantly reduced in VPAC1 KO mice. Similar reductions were found at an earlier time point (day 5 post-immunization), when clinical EAE has not yet manifested (Additional file 3: Figure S2). This could account for the lack of immune infiltration in these

mice and suggests a role for VIP/VPAC1 for chemokine induction and cell migration. Moreover, these effects were specific, as we found that the expression of the adhesion molecules ICAM and VCAM was not reduced in VPAC1 KO mice, suggesting that VIP/VPAC1 may not be required for cellular adhesion.

#### Discussion

VIP, PACAP, and their receptors have been proposed as potential candidates for the treatment of inflammatory and autoimmune conditions such as MS. Studies utilizing specific VPAC1, VPAC2, and PAC1 agonists have suggested an anti-inflammatory role for all three receptors, although VPAC1 has been implicated as the principle receptor involved [4]. However, our results in peptide and receptor KO mice have brought new information regarding the roles of the endogenous peptides in the pathogenesis of EAE and the receptor subtypes involved. Whereas the neuropeptide PACAP and the VPAC2 receptor appear to prevail as inhibitors of inflammation and clinical disease, VIP and VPAC1 receptors seem to be necessary at some point for EAE development. This new evidence strongly suggests that some aspect of EAE could be potentially blocked pharmacologically with a VPAC1 antagonist. In fact, we report here that a 2-week pretreatment with a VPAC1 antagonist attenuated the development of the disease. This is in contrast with previous studies in the context of multiple models of acute and chronic inflammation (including EAE), in which a short-term treatment with a VPAC1 agonist started at the beginning or during ongoing disease was beneficial [28, 30, 44]. Both the length and the different start points for the treatment might influence dual actions of VIP/VPAC1. In our studies with a VPAC1 antagonist treatment, a long-term administration before EAE induction led to a lack of EAE similar to that



**Fig. 6** Chemokine and chemokine receptor but not adhesion molecule expressions in the CNS of EAE-immunized mice are reduced in VPAC1 KO mice. EAE was induced in WT- and VPAC1-deficient mice, and the spinal cords were collected and fresh-frozen in liquid nitrogen at the peak of EAE (14–15 days later). RNA was extracted and retrotranscribed to cDNA, and the levels of expression of **a** the lymphocyte chemokines RANTES/CCL5, MIG/CXCL9 (Th1), IP-10/CXCL10 (Th1), and MIP-3 $\alpha$ /CCL20 (Th17); **b** the monocyte chemokines MCP-1/CCL2 and MCP-2/CCL8; **c** the chemokine receptors CCR1, CCR2, and CCR5; and **d** the adhesion molecules ICAM and VCAM were determined by real-time RT-PCR as described in the “Methods” sections. Results shown are representative of two independent experiments of  $n = 5$  mice/group. \* $p < 0.05$ , \*\* $p < 0.01$ , \*\*\* $p < 0.001$ , ns = not significant; Student’s  $t$  test

found in VPAC1 KO mice. However, a short-term administration during the early phases of EAE did not alter the early EAE course, suggesting that VPAC1 activation during this time frame does not regulate immune cell infiltration. Moreover, in agreement with published studies, we found that a short-term administration of a VPAC1 agonist during early EAE phases blocked EAE development (Additional file 2: Figure S1). The dual stimulatory vs. inhibitory effects of VIP/VPAC1 may depend on different factors such as their level of expression, their target cellular activation status, or their interaction with other mediators present in the microenvironment (i.e., basal vs inflammatory conditions). Variations in the expression of VPAC1 and VPAC2 in immune cells upon exposure to different stimuli have been described. For example, VPAC1 was reported to be constitutively expressed in multiple immune cell types investigated (i.e., T lymphocytes and macrophages) and downregulated after cellular stimulation [45–50]. In contrast, VPAC2 has a low expression in several cellular subtypes that is increased after cellular activation [5, 51]. The consequence of the reciprocal regulation of VPAC1 and VPAC2 in immune cells during inflammation has yet to be determined but could conceivably play a role in the paradoxical EAE resistance of VPAC1 KO and VPAC1 antagonist-pretreated WT mice.

EAE is a multistep pathology in which two phases have been characterized: the immunization and the effector phase. During the immunization phase, the antigen is drained to the lymph nodes located proximal to the injection site and presented by dendritic cells to naïve T cells that in turn become encephalitogenic. Later on, during the effector phase, these cells migrate to the CNS where they trigger an inflammatory response involving the further recruitment of increasing numbers of immune cells as well as the local activation of microglia. The pathogenesis of EAE is considered to be driven by both Th1 and Th17 cells, and their hallmark cytokines, IFN $\gamma$  and IL-17, are strong activators of the innate arm of immunity. A possible explanation for the lack of EAE development in VPAC1 KO mice would be a requirement for this receptor in the immunization phase of the disease. However, our results show that cells from VPAC1 KO-immunized mice were able to respond to MOG in vitro. Moreover, our results demonstrate stronger Th1 and Th17 but reduced Th2 responses in these mice. These results, which agree with the demonstrated ability of VIP to favor Th2 vs. Th1 responses in vitro and in vivo [16, 18, 21], are similar to those recently found in VPAC2-deficient mice, suggesting an involvement of both receptors on VIP-mediated Th differentiation [33].

Nevertheless, the EAE phenotype in VPAC1 and VPAC2 KO mice is opposite, suggesting that events apart from Th polarization are differentially mediated by VPAC1 and VPAC2. Adoptive transfer is a useful experimental approach as it bypasses the initial phase in which endogenous T cells are exposed to the autoantigen, by injecting cells from immunized mice that have been reactivated in vitro [52]. Upon transfer, lymphocytes from VPAC1 KO mice induced EAE in WT recipients, supporting the normal development of encephalitogenic T cells in these mice upon MOG administration. However, cells from WT mice, which were perfectly capable of inducing the disease in WT recipients, did not transfer EAE to KO mice. This suggests that these cells were not capable of migrating to the CNS, were unable to cross the BBB, or could not be locally reactivated to exert their effector functions. Our immunofluorescence results suggest that the former may be a possibility, since we found very few CD4<sup>+</sup> cells in VPAC1 KO mice directly immunized with MOG. In an attempt to determine whether or not immune cells are retained in the lymphoid organs or the peripheral circulation of VPAC1 KO mice, we have measured and compared the numbers of white blood cells and percentages of lymphocytes and monocytes in WT vs. VPAC1 KO mice during EAE. We found that the number of lymphocytes in the blood of VPAC1 KO mice on day 9 post-immunization was significantly higher than in WT mice, which might be due to the inability of these cells to enter the brain (Additional file 4: Figure S3). In the lymph nodes, the total number of cells in WT and VPAC1 KO mice before EAE and at the peak of the disease were not significantly different (Additional file 5: Figure S4).

Several in vitro studies have shown a direct effect of VIP on T cell chemotaxis. A study demonstrated a chemoattractant activity for VIP on unstimulated and stimulated T cells, although the effect was less pronounced in the latter [53]. In that study, VIP treatment of T cells augmented their adhesion to ICAM and VCAM in vitro. These molecules play an important role in the adhesion of T cells to the endothelium and their subsequent transmigration. In addition, VIP increased T cell adhesion to fibronectin, a component of the extracellular matrix, through which T cells must migrate upon extravasation. Moreover, VIP increased the production of metalloprotease 9 (MMP-9) by the lymphoblastoma T cell line Tsup1 and increased cell migration through a layer of basement membrane-like Matrigel [54]. In another study, VIP and a VPAC1 ligand stimulated chemotaxis of human T and B lymphocytes into micropore filters [55]. Finally, a transcriptomic analysis of VIP-regulated genes in murine isolated TCD4<sup>+</sup> splenic lymphocytes revealed an increased expression of multiple genes related to homing and migration upon VIP treatment in vitro concomitant to PMA and

ionomycin activation [56]. Despite these findings, VPAC1 KO immune cells induced EAE upon transfer to WT recipients, suggesting that their intrinsic ability to migrate is not impaired, and that the EAE-resistant phenotype is dependent on VPAC1 receptor loss in another cell type. Although it is still possible that the prior ex vivo restimulation of lymphocytes artificially restored this function, our bone marrow chimera studies, in which the WT hematopoietic/immune compartment was replaced by that of VPAC1 mice before EAE induction, also support that VPAC1 expression in this compartment has little relevance for the development of full disease. However, it is well known that microglia are not eliminated by irradiation by this bone marrow chimera protocol, so it remains possible that loss of VPAC1 in this hematopoietic cell type explains much of the EAE resistance of VPAC1 KO mice.

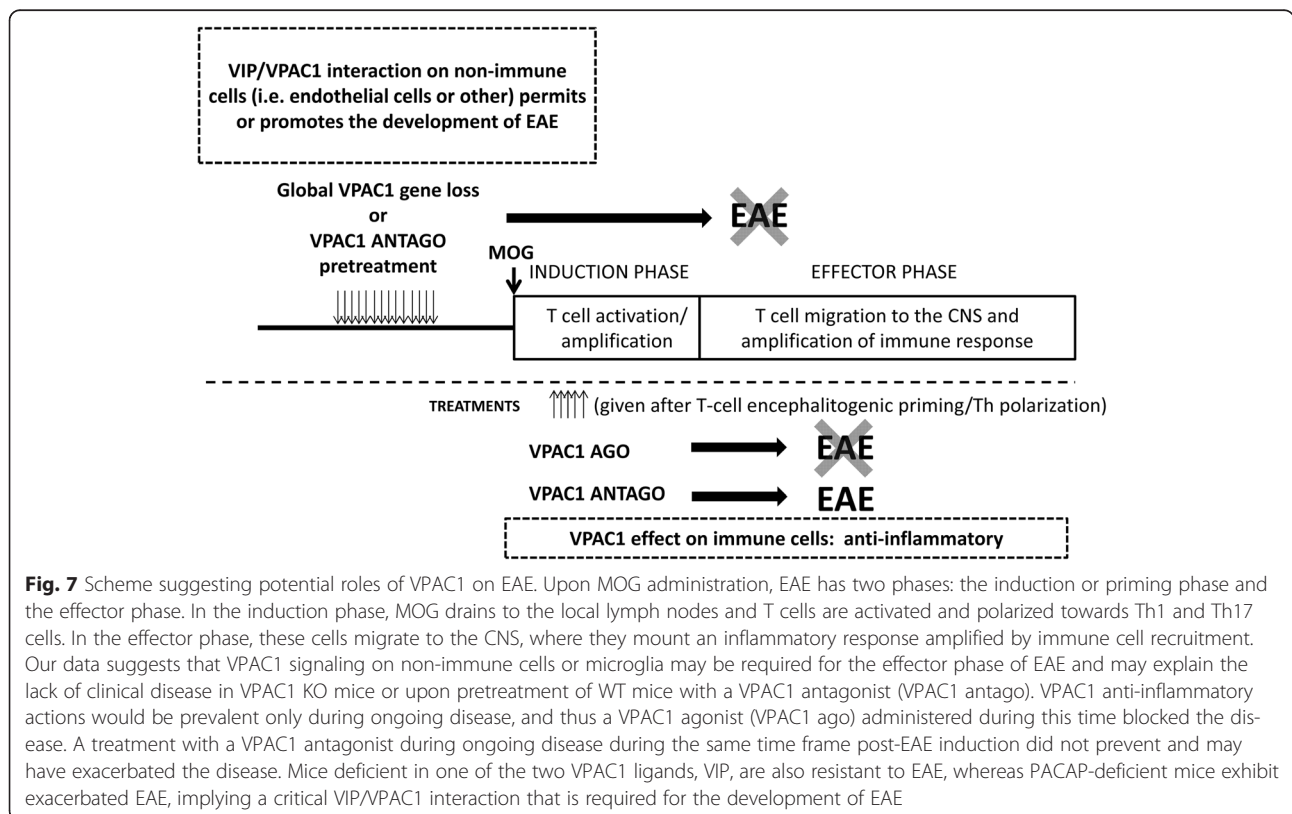
Our data suggests that the absence of VPAC1 may disrupt the mechanisms involved in the migration of immune cells into the CNS in EAE. In order for this to occur, cells must cross the BBB, which has several molecular and cellular components such as the tight junctions between the endothelial cells and the astrocytic feet or *glia limitans*. Activation of microglia and secretion of pro-inflammatory mediators, metalloproteases, and chemokines are also necessary in order to promote cell migration and to amplify the inflammatory response. There is evidence suggesting that these cell types express VIP/PACAP receptors [57–60], and acting on them, they could modulate immune cell migration. The absence of VPAC1 in such cells may interfere with the entrance of the first T cells into the CNS or in the subsequent immune cell infiltration during the amplification step. Among all factors involved in cell migration during EAE, Arima et al. highlighted a critical role for IL-6 for the initial entry of immune cells through the lumbar region of the spinal cord [61]. Interestingly, it has been shown that VIP promotes the secretion of IL-6 by resting macrophages [62], and we found this cytokine among others to be downregulated in MOG-immunized VPAC1 and VPAC1 KO mice. Both Arima et al. and Reboldi et al. [63] have suggested that CCL20 is necessary in the first immune cell entry into the CNS, and we also found this chemokine to be reduced in these mice. Interestingly, the expression of all cytokines and chemokines we measured was decreased in VPAC1 KO mice, whereas the expression of adhesion molecules was similarly induced in WT and VPAC1 KO mice. The latter suggest that the defects are specific for the chemokine system. Whether or not VIP is required for transmigration of immune cells by modulating the physical architecture or functioning of the BBB remains to be elucidated.

One of the properties of VIP that might be related to cell migration is its ability to elicit vasodilation. Other vasodilatory peptides, such as adrenomedullin, which

causes vasodilation in the cerebral circulation, have been suggested to play an important role in the regulation of specific BBB properties as endothelium-derived autocrine/paracrine hormones [64, 65]. Vasodilation is likely to increase BBB permeability [66]. The vasodilatory actions of VIP and PACAP in brain arteries have been demonstrated in the context of migraine. Dilatation of the intracranial vasculature is considered a putative trigger factor for the activation of nociceptors, which has been involved in the pathogenesis of migraine. It has been shown that administration of VIP or PACAP causes headache in healthy volunteers, albeit with significantly less potency of VIP compared to PACAP [67, 68]. Nevertheless, whether or not this general vasodilatory activity plays a role in immune cell migration across the BBB remains to be elucidated.

Another report has also described a reduced response of VPAC1 KO mice to inflammation. In this study, VPAC1 KO mice developed a milder colitis induced with the chemical dextran sodium sulfate (DSS) than WT mice [69]. In that report, the authors suggested that VIP through VPAC1 signaling may exhibit pro-inflammatory actions through the induction of Th17 responses or mediating immune cell migration to the gut. The resistance of VPAC1 KO mice to inflammatory insult in the DSS colitis and EAE models is reminiscent of that found in mice deficient in VIP (the ligand) in EAE and other models of inflammation such

as TNBS-induced colitis and endotoxemia induced by a lethal dose of LPS, a model of acute inflammation with no Th1/Th17 implication [34–36]. We have proposed that the reduced inflammation in VIP KO mice is due, at least partially, to certain defects in the innate immune response, because peritoneal cells from these mice produced reduced levels of the pro-inflammatory cytokines TNF $\alpha$  and IL-6 in response to LPS [35]. Both stimulatory and inhibitory actions for VIP on these cytokines have been reported in different experimental settings [62, 70, 71]. Nevertheless, whether or not this is the case in VPAC1-deficient mice remains to be elucidated. Despite the fact that VIP-VPAC1 could potentially play an active role to promote immune responses, other possibilities to explain the resistance of the KO mice for these molecules, such as compensatory anti-inflammatory mechanisms, cannot be excluded at this time. Interestingly, this has been shown to be the case in mice deficient in cortistatin [72]. Despite the anti-inflammatory actions of this neuropeptide, cortistatin-deficient mice were paradoxically resistant to EAE development, which was found to be associated to basal elevated circulating glucocorticoids and an anxiety-like behavior. Conversely, we have not found increased serum corticosterone levels in basal conditions or in response to an acute stressor in VIP KO mice, although this remains to be elucidated in the context of EAE [73].





Our prior results using KO mice have shown that VPAC2 receptor and PACAP KO mice developed exacerbated EAE as expected, supporting the primarily anti-inflammatory properties of these endogenous molecules in untreated mice. Data from pharmacological studies show that major anti-inflammatory effects of exogenously administered VIP and PACAP in EAE models are mediated by VPAC1, although a VPAC2 receptor-specific agonist was shown to be also anti-inflammatory. Conversely, VIP and VPAC1 KO mice were resistant to full EAE development. This unexpected phenotype in VPAC1 receptor-deficient mice suggests a specific requirement of VIP/VPAC1 interaction required for the full development of autoimmune inflammation (Fig. 7). While our studies so far have shown that the administration of a VPAC1 agonist during the initial stages of EAE development suppressed EAE, it remains to be determined if chronic administration of a VPAC1 agonist would begin to worsen EAE, as might be suggested by the EAE resistance of mice with chronic global loss of VPAC1.

## Conclusions

In this study, we have found that the VIP/PACAP receptor VPAC1 is required for the full development of EAE, as VPAC1 KO mice exhibited an unexpectedly but strikingly ameliorated clinical course of the disease. The facts that (1) *in vitro*, antigen-rechallenged lymph node cells from VPAC1 KO mice respond strongly to MOG, (2) VPAC1 KO lymph node cells induce EAE upon transfer to WT mice, and (3) bone marrow chimeric VPAC1 KO→WT mice develop full EAE suggest that the deficient ability of VPAC1 KO mice to develop EAE is not due to impairments in the immunization phase of the disease. Our study suggests that VPAC1 may play different roles in the pathogenesis of EAE, i.e., permissive in the early stages vs. anti-inflammatory if pharmacologically targeted during ongoing inflammation (Fig. 7). Thus, the use of agonists vs. antagonists of VPAC1 should be carefully examined to achieve maximum beneficial effects in diseases such as MS.

## Additional files

**Additional file 1: Table S1.** Oligonucleotide primers used for real-time PCR (PDF 236 kb)

**Additional file 2: Figure S1.** Effects of a VPAC1 agonist or antagonist treatment started on early EAE. EAE was induced by immunizing mice subcutaneously with 100 µg of MOG<sub>35–55</sub> in CFA supplemented with *Mycobacterium tuberculosis*, and EAE clinical scores were monitored daily on a scale of 0 to 4 as described in the “Methods” section. The clinical curve displays the mean clinical scores ± SEM of immunized WT mice treated with PBS, the VPAC1 antagonist PG97-269 at 10 nmol per mouse, or the VPAC1 agonist (Ala<sup>11</sup>, 22, 28)VIP at 5 nmol per mouse for five consecutive days starting on day 3 (indicated by the arrow). A representative experiment out of two is shown (*n* = 10 for each group). (PDF 14 kb)

**Additional file 3: Figure S2.** Early chemokine expression in the CNS of EAE-immunized mice is reduced in VPAC1 KO mice. EAE was induced in WT and VPAC1-deficient mice, and the spinal cords were collected and fresh-frozen in liquid nitrogen on day 5. RNA was extracted and retrotranscribed to cDNA and the levels of expression of IP-10, MIG, MIP-3α, and RANTES determined by real-time RT-PCR as described in the “Methods” sections. Results shown are representative of two independent experiments of *n* = 8 mice/group; \*\**p* < 0.01, \*\*\**p* < 0.001, ns = not significant; Student's *t* test. (PDF 18 kb)

**Additional file 4: Figure S3.** Quantification of white blood cell populations in WT and VPAC1 KO mice. EAE was induced to VPAC1 KO and WT mice and retro-orbital blood collected at different time points (days 6, 9, and 15). Cells were counted using a XT-4000i haematology analyser from Sysmex. *n* = 4 per group. (PDF 4 kb)

**Additional file 5: Figure S4.** The total numbers of cells in the draining lymph nodes of WT and VPAC1 KO mice do not differ. EAE was induced in WT and VPAC1-deficient mice, and the draining lymph nodes isolated at the peak of the disease. Lymph nodes from naive animals served as controls. A cell suspension was prepared by tapping the organs through a 40-µm nylon mesh, and cells counted with a hemocytometer (*n* = 5 for each group). (PDF 8 kb)

## Abbreviations

BBB, blood-brain barrier; BSA, bovine serum albumin; CNS, central nervous system; EAE, experimental autoimmune encephalomyelitis; HPRT, hypoxanthine-guanine phosphoribosyltransferase; ICAM, intercellular adhesion molecule; IFN, interferon; IL, interleukin; IP-10, interferon gamma-induced protein 10; IUPHAR, International Union of Basic and Clinical Pharmacology; LPS, lipopolysaccharide; MCP, monocyte chemoattractant protein; MIG, monokine induced by gamma interferon; MIP, macrophage inflammatory protein; MMP, metalloprotease; MOG<sub>35–55</sub>, myelin oligodendrocyte glycoprotein 35–55; MS, multiple sclerosis; OVA, ovalbumin; PACAP, pituitary adenylate cyclase-activating polypeptide; PCR, polymerase chain reaction; PFA, paraformaldehyde; RANTES, regulated on activation, normal T cell expressed and secreted; Th, T helper; TNF, tumor necrosis factor; Treg, regulatory T cell; VCAM, vascular cell adhesion molecule; VIP, vasoactive intestinal peptide; WT, wild-type

## Acknowledgements

Not applicable.

## Funding

This work was supported by the National Multiple Sclerosis Society RG4859, TA3048\_A\_1, RG-1501-02646, the National Institutes of Health (NIH) HD04612, and the ARSEP (*Fondation pour l'aide à la recherche sur la sclérose en plaques*). Flow cytometry was performed in the University of California at Los Angeles (UCLA) Jonsson Comprehensive Cancer Center (JCCC) and Center for AIDS Research Flow Cytometry Core Facility that is supported by the National Institutes of Health awards P30 CA016042 and 5P30 AI028697 and by the JCCC, the UCLA AIDS Institute, the David Geffen School of Medicine at UCLA, the UCLA Chancellor's Office, and the UCLA Vice Chancellor's Office of Research.

## Availability of data and materials

Data supporting the conclusions are presented in the manuscript. Any information regarding the animal model, the experimental methods used, and the data in this paper are available to scientific communities upon direct contact to the authors.

## Authors' contributions

CA, YVT, LB, and YW induced EAE, evaluated the mice, and performed adoptive transfer, antigen-recall assays, real-time PCR, and immunofluorescence studies. BJ performed the bone marrow chimera studies. MSO supplied the VPAC1 KO mice and helped edit the manuscript. CA wrote the manuscript. YVT composed the figures. JW contributed to the study design, was involved in the data interpretation, and helped to draft and edit the manuscript. All authors read and approved the final manuscript.

## Competing interests

The authors declare that they have no competing interests.

**Consent for publication**

Not applicable.

**Ethics approval and consent to participate**

All husbandry and experimental procedures were performed in compliance with the USDA Animal Welfare Act regulations section 2.31(d)(5), Institutional Policies and Guidelines, and adhered to all principles stated in the *Guide for the Care and Use of Laboratory Animals*. The experimental protocol was approved by the UCLA Animal Resource Committee (ARC# 1993-302).

**Author details**

<sup>1</sup>Department of Psychiatry, David Geffen School of Medicine, University of California, Los Angeles, USA. <sup>2</sup>Inserm U905, Institute for Research and Innovation in Biomedicine (IRIB), University of Rouen, Normandy, France. <sup>3</sup>Department of Pediatrics and Holden Comprehensive Cancer Center, RJ and LA Carver College of Medicine, University of Iowa, Iowa City 52242, IA, USA.

Received: 4 January 2016 Accepted: 14 June 2016

Published online: 29 June 2016

**References**

- Vaudry D, Falluel-Morel A, Bourgault S, Basille M, Burel D, Wurtz O, Fournier A, Chow BK, Hashimoto H, Galas L, Vaudry H. Pituitary adenylate cyclase-activating polypeptide and its receptors: 20 years after the discovery. *Pharmacol Rev.* 2009;61:283–357.
- Fahrenkrug J. VIP and PACAP. *Results Probl Cell Differ.* 2010;50:221–34.
- Harmar AJ, Fahrenkrug J, Gozes I, Laburthe M, May V, Pisegna JR, Vaudry D, Vaudry H, Waschek JA, Said SI. Pharmacology and functions of receptors for vasoactive intestinal peptide and pituitary adenylate cyclase-activating polypeptide: IUPHAR review 1. *Br J Pharmacol.* 2012;166:4–17.
- Delgado M, Pozo D, Ganea D. The significance of vasoactive intestinal peptide in immunomodulation. *Pharmacol Rev.* 2004;56:249–90.
- Delgado M, Munoz-Elias EJ, Kan Y, Gozes I, Fridkin M, Brenneman DE, Gomariz RP, Ganea D. Vasoactive intestinal peptide and pituitary adenylate cyclase-activating polypeptide inhibit tumor necrosis factor alpha transcriptional activation by regulating nuclear factor-kB and cAMP response element-binding protein/c-Jun. *J Biol Chem.* 1998;273:31427–36.
- Delgado M, Martinez C, Johnson MC, Gomariz RP, Ganea D. Differential expression of vasoactive intestinal peptide receptors 1 and 2 (VIP-R1 and VIP-R2) mRNA in murine lymphocytes. *J Neuroimmunol.* 1996;68:27–38.
- Delgado M, Reduta A, Sharma V, Ganea D. VIP/PACAP oppositely affects immature and mature dendritic cell expression of CD80/CD86 and the stimulatory activity for CD4(+) T cells. *J Leukoc Biol.* 2004;75:1122–30.
- Pozo D, Delgado M, Martinez C, Gomariz RP, Guerrero JM, Calvo JR. Functional characterization and mRNA expression of pituitary adenylate cyclase activating polypeptide (PACAP) type I receptors in rat peritoneal macrophages. *Biochim Biophys Acta.* 1997;1359:250–62.
- Delgado M, Pozo D, Martinez C, Leceta J, Calvo JR, Ganea D, Gomariz RP. Vasoactive intestinal peptide and pituitary adenylate cyclase-activating polypeptide inhibit endotoxin-induced TNF-alpha production by macrophages: in vitro and in vivo studies. *J Immunol.* 1999;162:2358–67.
- Martinez C, Delgado M, Pozo D, Leceta J, Calvo JR, Ganea D, Gomariz RP. Vasoactive intestinal peptide and pituitary adenylate cyclase-activating polypeptide modulate endotoxin-induced IL-6 production by murine peritoneal macrophages. *J Leukoc Biol.* 1998;63:591–601.
- Delgado M, Munoz-Elias EJ, Gomariz RP, Ganea D. VIP and PACAP inhibit IL-12 production in LPS-stimulated macrophages. Subsequent effect on IFN-gamma synthesis by T cells. *J Neuroimmunol.* 1999;96:167–81.
- Chorny A, Gonzalez-Rey E, Varela N, Robledo G, Delgado M. Signaling mechanisms of vasoactive intestinal peptide in inflammatory conditions. *Regul Pept.* 2006;137:67–74.
- Delgado M. VIP: a very important peptide in T helper differentiation. *Trends Immunol.* 2003;24:221–4.
- Voice JK, Dorsam G, Chan RC, Grinninger C, Kong Y, Goetzl EJ. Immuno-efferent and immunoregulatory activities of vasoactive intestinal peptide. *Regul Pept.* 2002;109:199–208.
- Delgado M, Leceta J, Gomariz RP, Ganea D. Vasoactive intestinal peptide and pituitary adenylate cyclase-activating polypeptide stimulate the induction of Th2 responses by up-regulating B7.2 expression. *J Immunol.* 1999;163:3629–35.
- Delgado M, Leceta J, Sun W, Gomariz RP, Ganea D. VIP and PACAP induce shift to a Th2 response by upregulating B7.2 expression. *Ann N Y Acad Sci.* 2000;921:68–78.
- Delgado M, Gonzalez-Rey E, Ganea D. VIP/PACAP preferentially attract Th2 effectors through differential regulation of chemokine production by dendritic cells. *FASEB J.* 2004;18:1453–5.
- Fabricius D, O'Doriso MS, Blackwell S, Jahrsdorfer B. Human plasmacytoid dendritic cell function: inhibition of IFN-alpha secretion and modulation of immune phenotype by vasoactive intestinal peptide. *J Immunol.* 2006;177:5920–7.
- Sharma V, Delgado M, Ganea D. VIP protects Th2 cells by downregulating granzyme B expression. *Ann N Y Acad Sci.* 2006;1070:540–4.
- Sharma V, Delgado M, Ganea D. Granzyme B, a new player in activation-induced cell death, is down-regulated by vasoactive intestinal peptide in Th2 but not Th1 effectors. *J Immunol.* 2006;176:97–110.
- Delgado M, Leceta J, Ganea D. Vasoactive intestinal peptide and pituitary adenylate cyclase-activating polypeptide promote in vivo generation of memory Th2 cells. *FASEB J.* 2002;16:1844–6.
- Delgado M, Chorny A, Gonzalez-Rey E, Ganea D. Vasoactive intestinal peptide generates CD4 + CD25+ regulatory T cells in vivo. *J Leukoc Biol.* 2005;78:1327–38.
- Gonzalez-Rey E, Chorny A, Fernandez-Martin A, Ganea D, Delgado M. Vasoactive intestinal peptide generates human tolerogenic dendritic cells that induce CD4 and CD8 regulatory T cells. *Blood.* 2006;107:3632–8.
- Gonzalez-Rey E, Delgado M. Vasoactive intestinal peptide and regulatory T-cell induction: a new mechanism and therapeutic potential for immune homeostasis. *Trends Mol Med.* 2007;13:241–51.
- Gonzalez-Rey E, Delgado M. Therapeutic treatment of experimental colitis with regulatory dendritic cells generated with vasoactive intestinal peptide. *Gastroenterology.* 2006;131:1799–811.
- Gonzalez-Rey E, Fernandez-Martin A, Chorny A, Delgado M. Vasoactive intestinal peptide induces CD4+, CD25+ T regulatory cells with therapeutic effect in collagen-induced arthritis. *Arthritis Rheum.* 2006;54:864–76.
- Fernandez-Martin A, Gonzalez-Rey E, Chorny A, Ganea D, Delgado M. Vasoactive intestinal peptide induces regulatory T cells during experimental autoimmune encephalomyelitis. *Eur J Immunol.* 2006;36:318–26.
- Delgado M, Abad C, Martinez C, Leceta J, Gomariz RP. Vasoactive intestinal peptide prevents experimental arthritis by downregulating both autoimmune and inflammatory components of the disease. *Nat Med.* 2001;7:563–8.
- Abad C, Martinez C, Juarranz MG, Arranz A, Leceta J, Delgado M, Gomariz RP. Therapeutic effects of vasoactive intestinal peptide in the trinitrobenzene sulfonic acid mice model of Crohn's disease. *Gastroenterology.* 2003;124:961–71.
- Gonzalez-Rey E, Fernandez-Martin A, Chorny A, Martin J, Pozo D, Ganea D, Delgado M. Therapeutic effect of vasoactive intestinal peptide on experimental autoimmune encephalomyelitis: down-regulation of inflammatory and autoimmune responses. *Am J Pathol.* 2006;168:1179–88.
- Rangachari M, Kuchroo VK. Using EAE to better understand principles of immune function and autoimmune pathology. *J Autoimmun.* 2013;45:31–9.
- Hemmer B, Kerschensteiner M, Korn T. Role of the innate and adaptive immune responses in the course of multiple sclerosis. *Lancet Neurol.* 2015;14:406–19.
- Tan YV, Abad C, Wang Y, Lopez R, Waschek JA. VPAC2 (vasoactive intestinal peptide receptor type 2) receptor deficient mice develop exacerbated experimental autoimmune encephalomyelitis with increased Th1/Th17 and reduced Th2/Treg responses. *Brain Behav Immun.* 2015;44:167–75.
- Abad C, Tan YV, Lopez R, Nobuta H, Dong H, Phan P, Feng JM, Campagnoni AT, Waschek JA. Vasoactive intestinal peptide loss leads to impaired CNS parenchymal T-cell infiltration and resistance to experimental autoimmune encephalomyelitis. *Proc Natl Acad Sci U S A.* 2010;107:19555–60.
- Abad C, Tan Y-V, Cheung-Lau G, Nobuta H, Waschek JA. VIP deficient mice exhibit resistance to lipopolysaccharide induced endotoxemia with an intrinsic defect in proinflammatory cellular responses. *PLoS One.* 2012;7:e36922.
- Abad C, Cheung-Lau G, Coute-Monvoisin A-C, Waschek JA. Vasoactive intestinal peptide-deficient mice exhibit reduced pathology in trinitrobenzene sulfonic acid-induced colitis. *Neuroimmunomodulation.* 2015;22:203–12.
- Fabricius D, Karacay B, Shutt D, Leverich W, Schafer B, Takle E, Thedens D, Khanna G, Raikwar S, Yang B, et al. Characterization of intestinal and pancreatic dysfunction in VPAC1-null mutant mouse. *Pancreas.* 2011;40:861–71.
- Tan YV, Abad C, Lopez R, Dong H, Liu S, Lee A, Gomariz RP, Leceta J, Waschek JA. Pituitary adenylate cyclase-activating polypeptide is an intrinsic

- regulator of Treg abundance and protects against experimental autoimmune encephalomyelitis. *Proc Natl Acad Sci U S A*. 2009;106:2012–7.
39. Gourlet P, De Neef P, Cnudde J, Waelbroeck M, Robberecht P. In vitro properties of a high affinity selective antagonist of the VIP1 receptor. *Peptides*. 1997;18:1555–60.
  40. Livak KJ, Schmittgen TD. Analysis of relative gene expression data using real-time quantitative PCR and the 2(-Delta Delta C(T)) Method. *Methods (San Diego, Calif)*. 2001;25:402–8.
  41. Kivisakk P, Imitola J, Rasmussen S, Elyaman W, Zhu B, Ransohoff RM, Khoury SJ. Localizing central nervous system immune surveillance: meningeal antigen-presenting cells activate T cells during experimental autoimmune encephalomyelitis. *Ann Neurol*. 2009;65:457–69.
  42. Huang DR, Wang J, Kivisakk P, Rollins BJ, Ransohoff RM. Absence of monocyte chemoattractant protein 1 in mice leads to decreased local macrophage recruitment and antigen-specific T helper cell type 1 immune response in experimental autoimmune encephalomyelitis. *J Exp Med*. 2001;193:713–26.
  43. Fife BT, Huffnagle GB, Kuziel WA, Karpus WJ. CC chemokine receptor 2 is critical for induction of experimental autoimmune encephalomyelitis. *J Exp Med*. 2000;192:899–905.
  44. Delgado M, Gomariz RP, Martinez C, Abad C, Leceta J. Anti-inflammatory properties of the type 1 and type 2 vasoactive intestinal peptide receptors: role in lethal endotoxic shock. *Eur J Immunol*. 2000;30:3236–46.
  45. Lara-Marquez M, O'Dorisio M, O'Dorisio T, Shah M, Karacay B. Selective gene expression and activation-dependent regulation of vasoactive intestinal peptide receptor type 1 and type 2 in human T cells. *J Immunol*. 2001;166:2522–30.
  46. Storka A, Burian B, Fuhrlinger G, Clive B, Sun T, Crevenna R, Gsur A, Mosgoller W, Wolz M. VPAC1 receptor expression in peripheral blood mononuclear cells in a human endotoxemia model. *J Transl Med*. 2013;11:117.
  47. Hermann RJ, Van der Steen T, Vomhof-Dekrey EE, Al-Badrani S, Wanjara SB, Failing JJ, Haring JS, Dorsam GP. Characterization and use of a rabbit-anti-mouse VPAC1 antibody by flow cytometry. *J Immunol Methods*. 2012;376:20–31.
  48. Vomhof-DeKrey EE, Hermann RJ, Palmer MF, Benton KD, Sandy AR, Dorsam ST, Dorsam GP. TCR signaling and environment affect vasoactive intestinal peptide receptor-1 (VPAC-1) expression in primary mouse CD4 T cells. *Brain Behav Immun*. 2008;22:1032–40.
  49. Vomhof-DeKrey EE, Dorsam GP. Stimulatory and suppressive signal transduction regulates vasoactive intestinal peptide receptor-1 (VPAC-1) in primary mouse CD4 T cells. *Brain Behav Immun*. 2008;22:1024–31.
  50. Cocco E, Paladini F, Macino G, Fulci V, Fiorillo MT, Sorrentino R. The expression of vasoactive intestinal peptide receptor 1 is negatively modulated by microRNA 525-5p. *PLoS One*. 2010;5, e12067.
  51. Herrera JL, Gonzalez-Rey E, Fernandez-Montesinos R, Quintana FJ, Najmanovich R, Pozo D. Toll-like receptor stimulation differentially regulates vasoactive intestinal peptide type 2 receptor in macrophages. *J Cell Mol Med*. 2009;13:3209–17.
  52. Kawakami N, Bartholomaeus I, Pesic M, Mues M. An autoimmunity odyssey: how autoreactive T cells infiltrate into the CNS. *Immunol Rev*. 2012;248:140–55.
  53. Johnston JA, Taub DD, Lloyd AR, Conlon K, Oppenheim JJ, Kevlin DJ. Human T lymphocyte chemotaxis and adhesion induced by vasoactive intestinal peptide. *J Immunol*. 1994;153:1762–8.
  54. Xia M, Leppert D, Hauser SL, Sreedharan SP, Nelson PJ, Krensky AM, Goetzl EJ. Stimulus specificity of matrix metalloproteinase dependence of human T cell migration through a model basement membrane. *J Immunol*. 1996;156:160–7.
  55. Schratzberger P, Geiseler A, Dunzendorfer S, Reinisch N, Kahler CM, Wiedermann CJ. Similar involvement of VIP receptor type I and type II in lymphocyte chemotaxis. *J Neuroimmunol*. 1998;87:73–81.
  56. Dorsam ST, Vomhof-DeKrey E, Hermann RJ, Haring JS, Van der Steen T, Wilkerson E, Boskovic G, Denvir J, Dementieva Y, Primerano D, Dorsam GP. Identification of the early VIP-regulated transcriptome and its associated, interactome in resting and activated murine CD4 T cells. *Mol Immunol*. 2010;47:1181–94.
  57. Yang J, Shi QD, Song TB, Feng GF, Zang WJ, Zong CH, Chang L. Vasoactive intestinal peptide increases VEGF expression to promote proliferation of brain vascular endothelial cells via the cAMP/PKA pathway after ischemic insult in vitro. *Peptides*. 2013;42:105–11.
  58. Castorina A, Giunta S, Mazzone V, Cardile V, D'Agata V. Effects of PACAP and VIP on hyperglycemia-induced proliferation in murine microvascular endothelial cells. *Peptides*. 2010;31:2276–83.
  59. Joo KM, Chung YH, Kim MK, Nam RH, Lee BL, Lee KH, Cha CI. Distribution of vasoactive intestinal peptide and pituitary adenylate cyclase-activating polypeptide receptors (VPAC1, VPAC2, and PAC1 receptor) in the rat brain. *J Comp Neurol*. 2004;476:388–413.
  60. Delgado M. Vasoactive intestinal peptide and pituitary adenylate cyclase-activating polypeptide inhibit the MEK1/MEK4/JNK signaling pathway in endotoxin-activated microglia. *Biochem Biophys Res Commun*. 2002;293:771–6.
  61. Arima Y, Harada M, Kamimura D, Park JH, Kawano F, Yull FE, Kawamoto T, Iwakura Y, Betz UA, Marquez G, et al. Regional neural activation defines a gateway for autoreactive T cells to cross the blood-brain barrier. *Cell*. 2012;148:447–57.
  62. Martinez C, Delgado M, Pozo D, Leceta J, Calvo JR, Ganea D, Gomariz RP. VIP and PACAP enhance IL-6 release and mRNA levels in resting peritoneal macrophages: in vitro and in vivo studies. *J Neuroimmunol*. 1998;85:155–67.
  63. Reboldi A, Coisne C, Baumjohann D, Benvenuto F, Bottinelli D, Lira S, Uccelli A, Lanzavecchia A, Engelhardt B, Sallusto F. C-C chemokine receptor 6-regulated entry of TH-17 cells into the CNS through the choroid plexus is required for the initiation of EAE. *Nat Immunol*. 2009;10:514–23.
  64. Kis B, Abraham CS, Deli MA, Kobayashi H, Niwa M, Yamashita H, Busija DW, Ueta Y. Adrenomedullin, an autocrine mediator of blood-brain barrier function. *Hypertens Res*. 2003;26(Suppl):S61–70.
  65. Kis B, Chen L, Ueta Y, Busija DW. Autocrine peptide mediators of cerebral endothelial cells and their role in the regulation of blood-brain barrier. *Peptides*. 2006;27:211–22.
  66. Staines DR, Brenu EW, Marshall-Gradisnik S. Postulated role of vasoactive neuropeptide-related immunopathology of the blood brain barrier and Virchow-Robin spaces in the aetiology of neurological-related conditions. *Mediators Inflamm*. 2008;2008:792428.
  67. Hansen JM, Sitarz J, Birk S, Rahmann AM, Oturai PS, Fahrenkrug J, Olesen J, Ashina M. Vasoactive intestinal polypeptide evokes only a minimal headache in healthy volunteers. *Cephalalgia*. 2006;26:992–1003.
  68. Schytz HW, Birk S, Wienecke T, Kruuse C, Olesen J, Ashina M. PACAP38 induces migraine-like attacks in patients with migraine without aura. *Brain*. 2009;132:16–25.
  69. Yadav M, Huang MC, Goetzl EJ. VPAC1 (vasoactive intestinal peptide (VIP) receptor type 1) G protein-coupled receptor mediation of VIP enhancement of murine experimental colitis. *Cell Immunol*. 2011;267:124–32.
  70. Maimone D, Cioni C, Rosa S, Macchia G, Aloisi F, Annunziata P. Norepinephrine and vasoactive intestinal peptide induce IL-6 secretion by astrocytes: synergism with IL-1 beta and TNF alpha. *J Neuroimmunol*. 1993;47:73–81.
  71. Rameshwar P, Gascon P, Oh HS, Denny TN, Zhu G, Ganea D. Vasoactive intestinal peptide (VIP) inhibits the proliferation of bone marrow progenitors through the VPAC1 receptor. *Exp Hematol*. 2002;30:1001–9.
  72. Souza-Moreira L, Morell M, Delgado-Maroto V, Pedreno M, Martinez-Escudero L, Caro M, O'Valle F, Luque R, Gallo M, de Lecea L, et al. Paradoxical effect of cortistatin treatment and its deficiency on experimental autoimmune encephalomyelitis. *J Immunol*. 2013;191:2144–54.
  73. Loh DH, Abad C, Colwell CS, Waschek JA. Vasoactive intestinal peptide is critical for circadian regulation of glucocorticoids. *Neuroendocrinology*. 2008;88:246–55.

Submit your next manuscript to BioMed Central and we will help you at every step:

- We accept pre-submission inquiries
- Our selector tool helps you to find the most relevant journal
- We provide round the clock customer support
- Convenient online submission
- Thorough peer review
- Inclusion in PubMed and all major indexing services
- Maximum visibility for your research

Submit your manuscript at  
[www.biomedcentral.com/submit](http://www.biomedcentral.com/submit)

