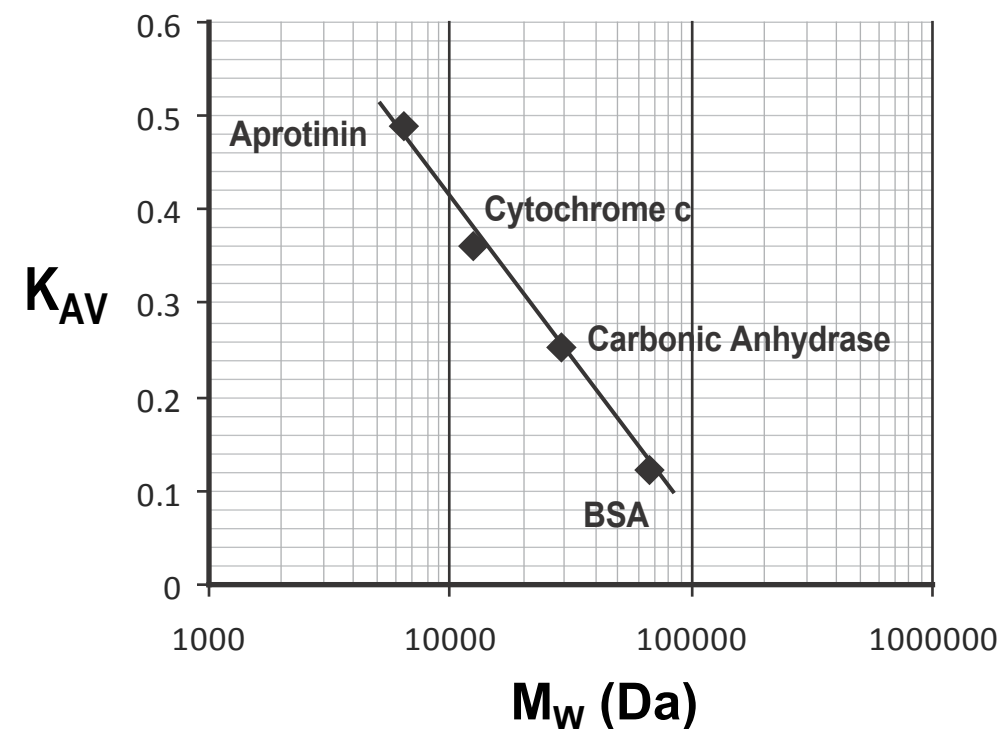
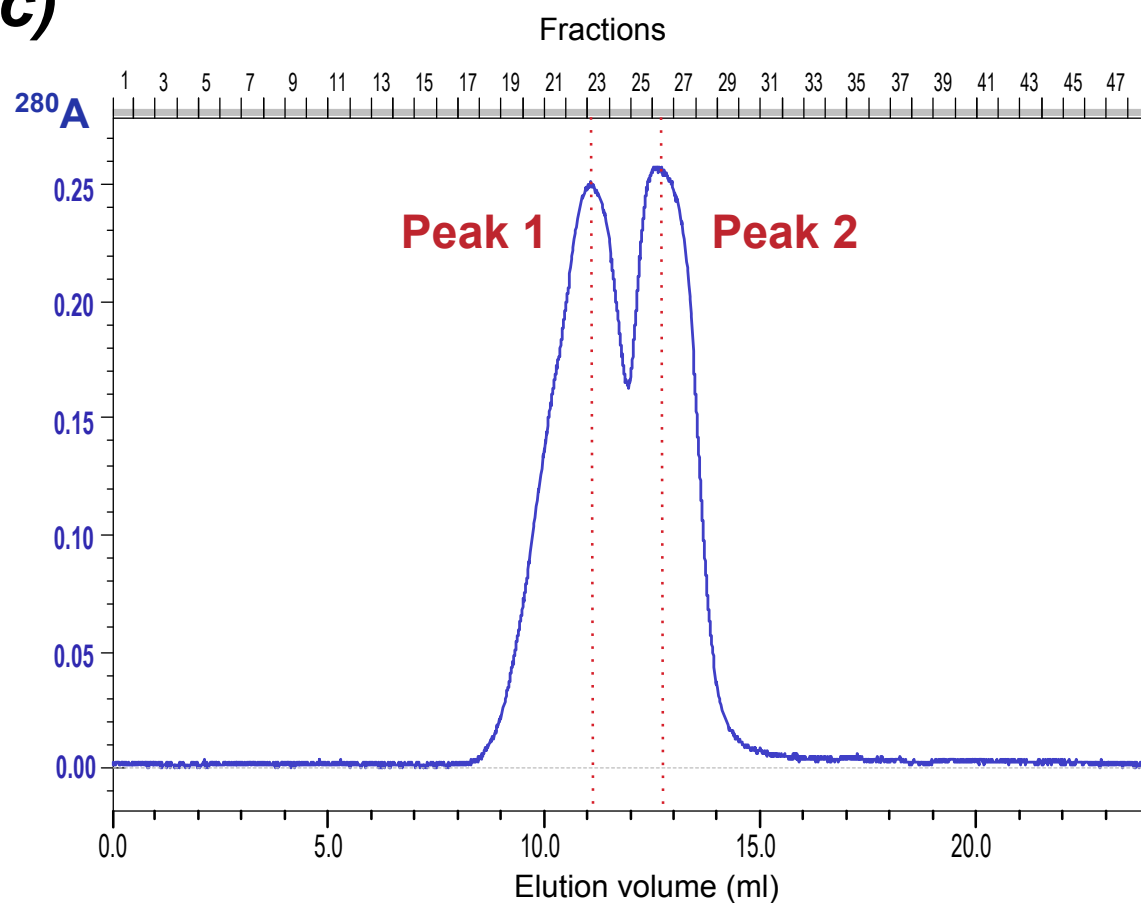


**(a)**

Protein standard	Molecular Weight ( $M_w$ ) in Da	Elution Volume $V_E$ (in ml)
Blue Dextran	$V_0$	8.91
BSA	66500	10.77
Carbonic Anhydrase	29000	12.75
Cytochrome c	12400	14.37
Aprotinin	6500	16.30

 $V_C = 24$  ml**(b)**

$$K_{AV} = \frac{V_E - V_0}{V_C - V_0}$$

**(c)****(d)**

$$K_{AV} = -0.3538 * \log(M_w) + 1.8276$$

hS100A8 species from SEC	Measured Elution Volume $V_E$ (in ml)	Extrapolated Molecular Weight ( $M_w$ ) in Da	Corresponding number of hS100A8 dimers
Peak 1	11.15	55726	2.55
Peak 2	12.80	27353	1.25