



# Interaction of HIF1 $\alpha$ and $\beta$ -catenin inhibits matrix metalloproteinase 13 expression and prevents cartilage damage in mice

Martine Cohen-Solal

## ► To cite this version:

Martine Cohen-Solal. Interaction of HIF1 $\alpha$  and  $\beta$ -catenin inhibits matrix metalloproteinase 13 expression and prevents cartilage damage in mice. Proceedings of the National Academy of Sciences of the United States of America, National Academy of Sciences, 2016. <inserm-01313898>

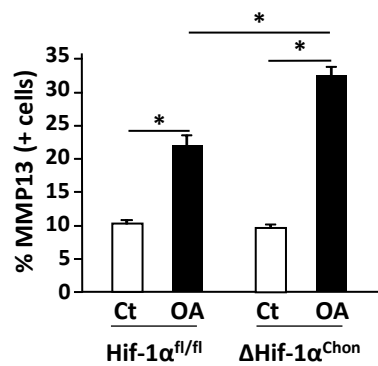
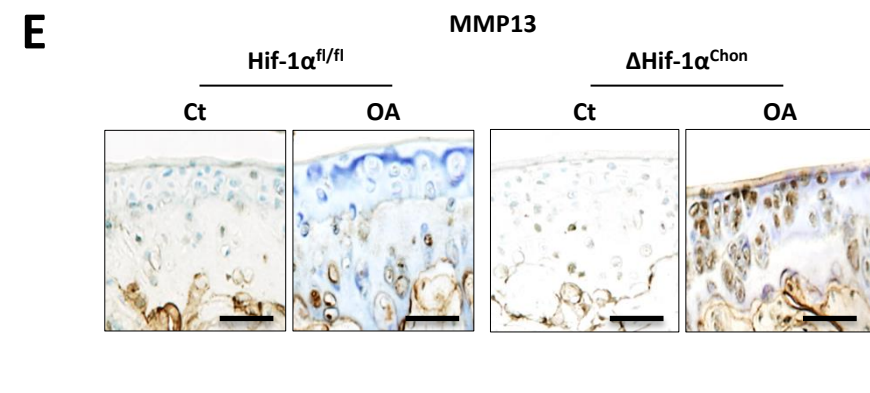
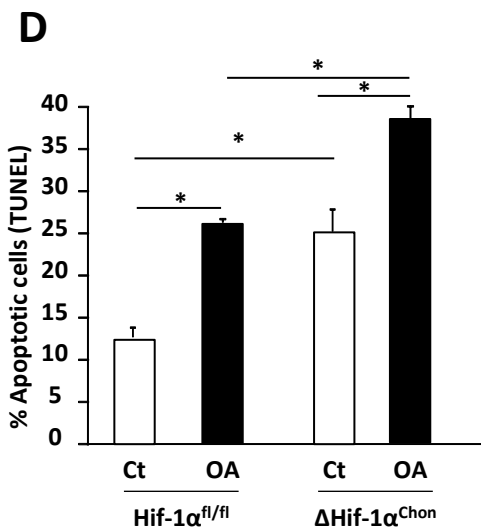
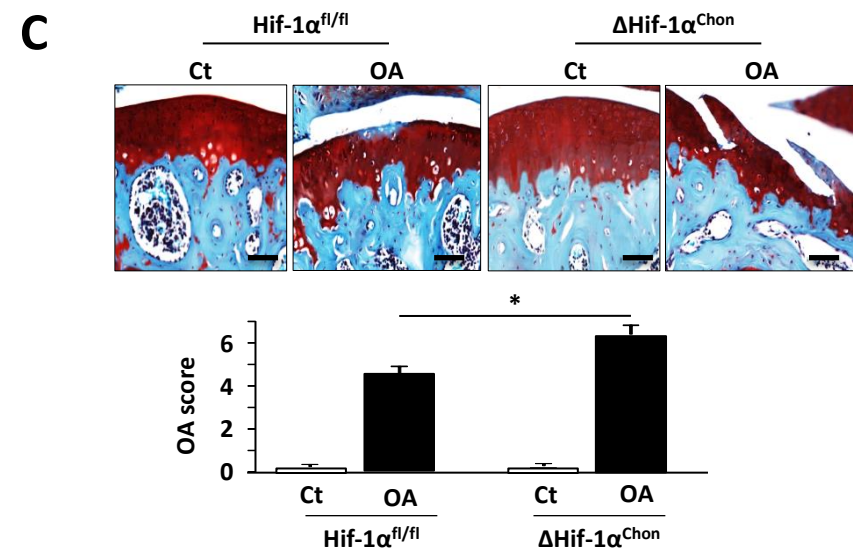
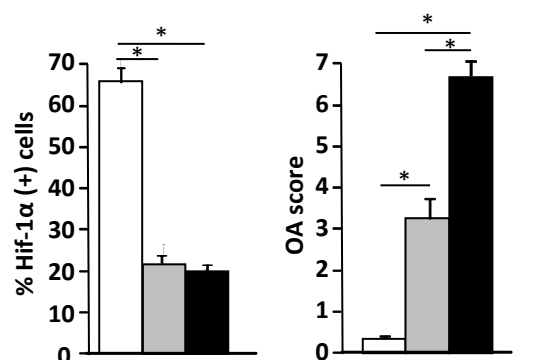
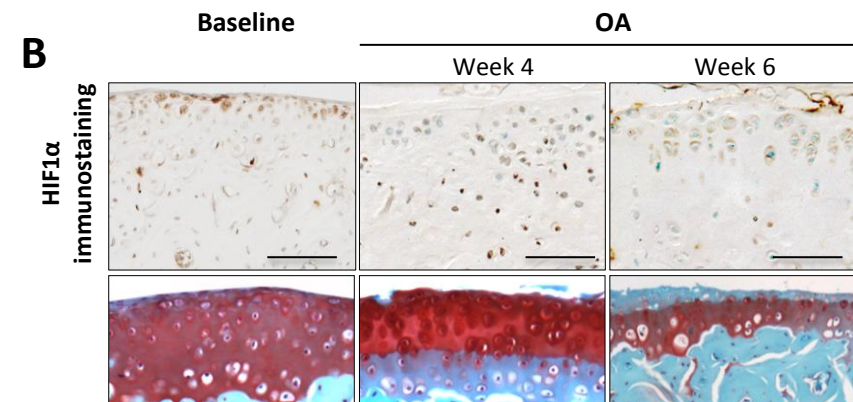
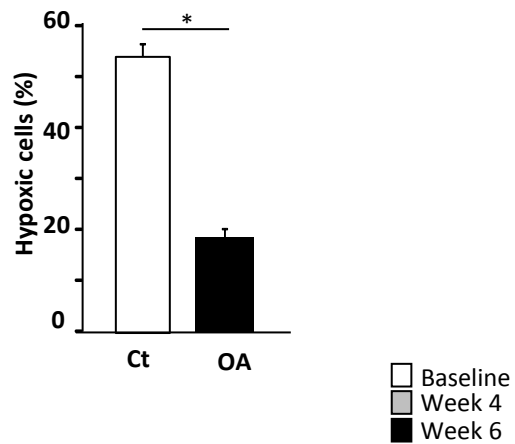
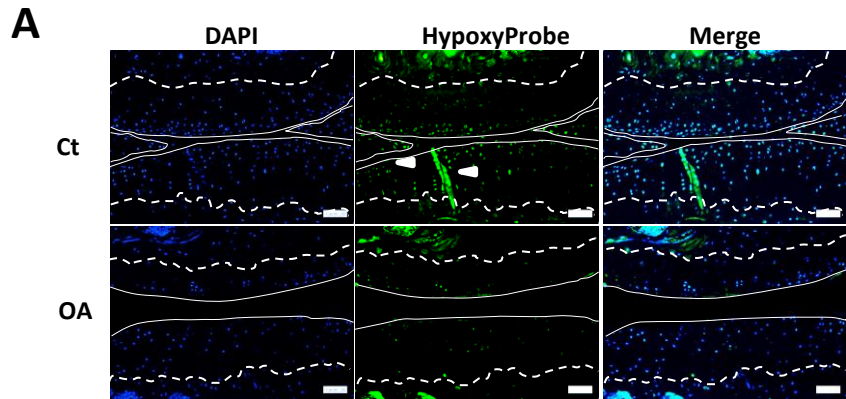
**HAL Id: inserm-01313898**

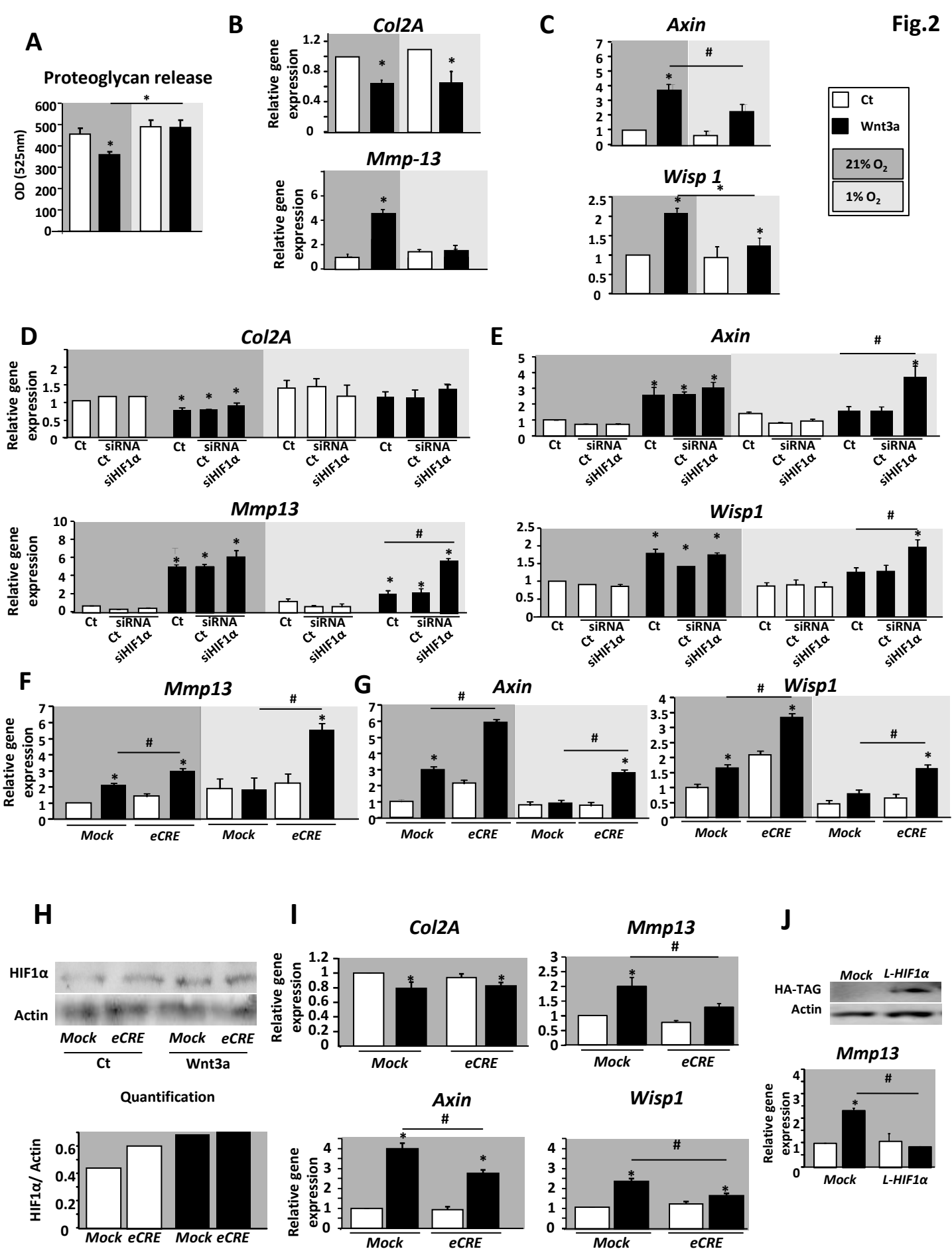
**<http://www.hal.inserm.fr/inserm-01313898>**

Submitted on 10 May 2016

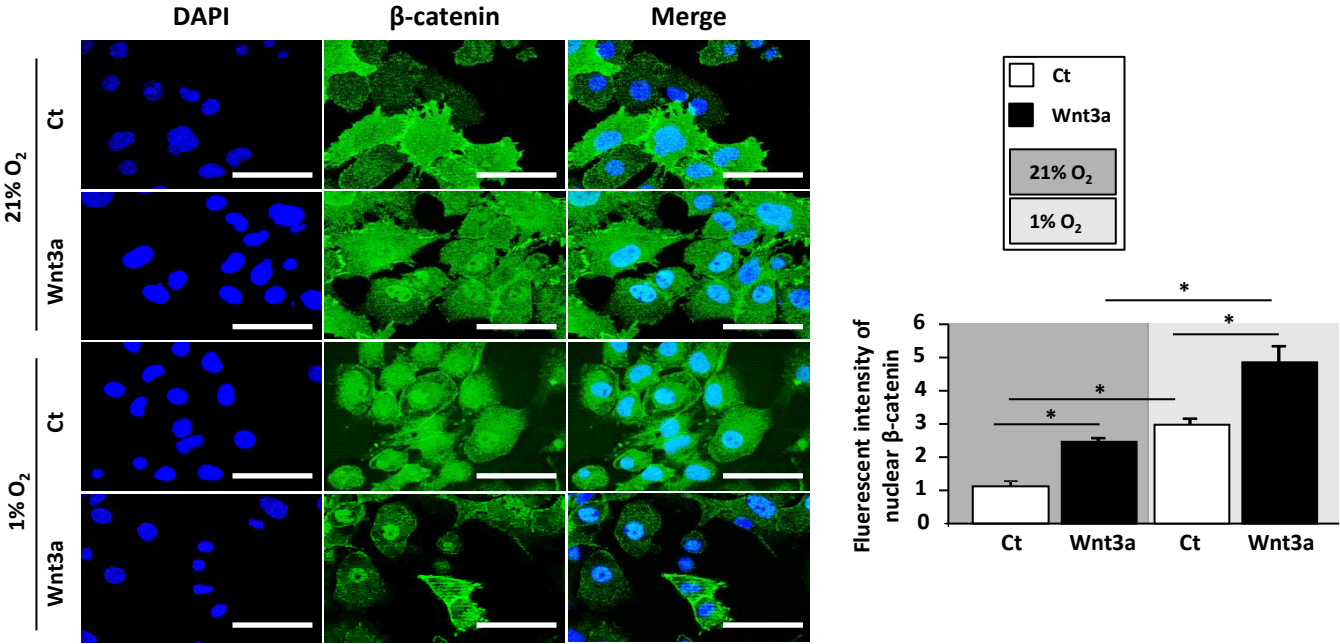
**HAL** is a multi-disciplinary open access archive for the deposit and dissemination of scientific research documents, whether they are published or not. The documents may come from teaching and research institutions in France or abroad, or from public or private research centers.

L'archive ouverte pluridisciplinaire **HAL**, est destinée au dépôt et à la diffusion de documents scientifiques de niveau recherche, publiés ou non, émanant des établissements d'enseignement et de recherche français ou étrangers, des laboratoires publics ou privés.

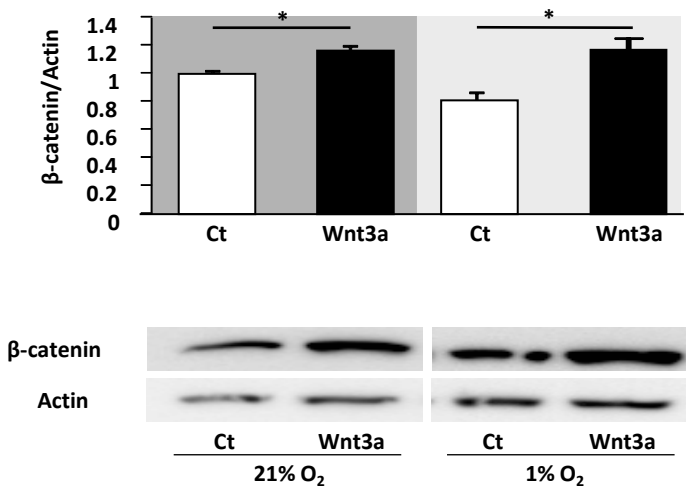




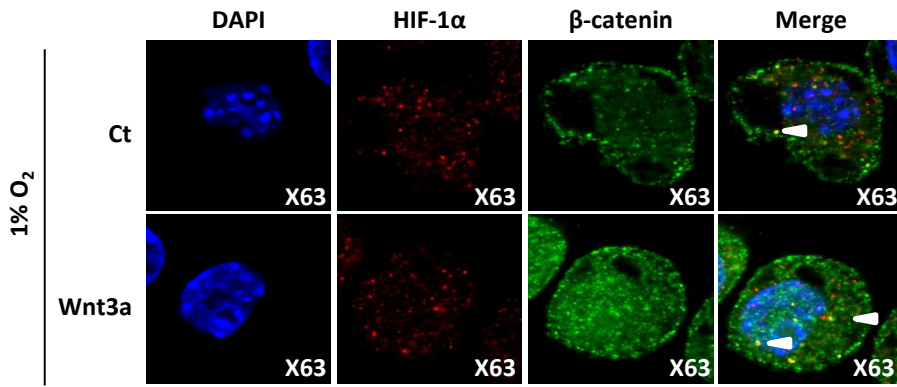
A



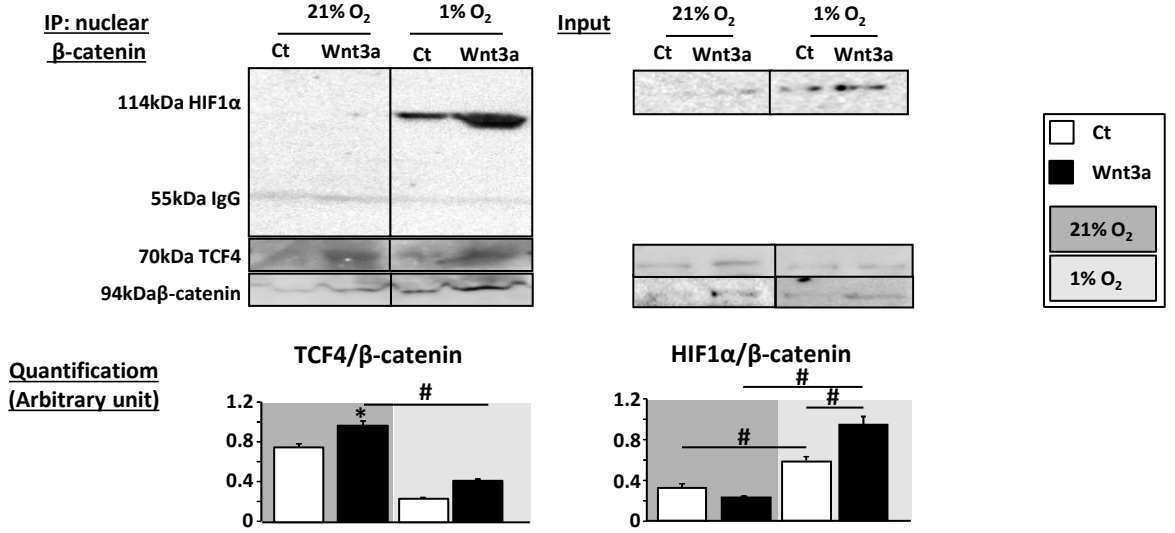
B



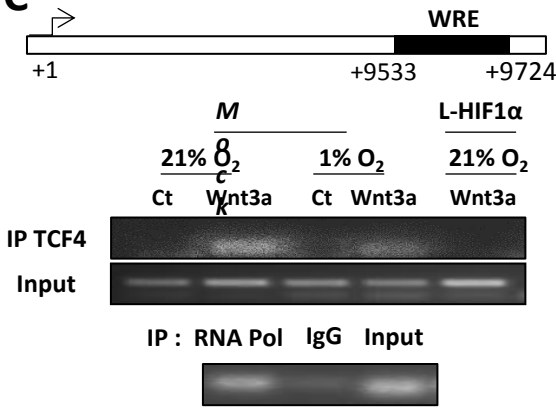
**A**



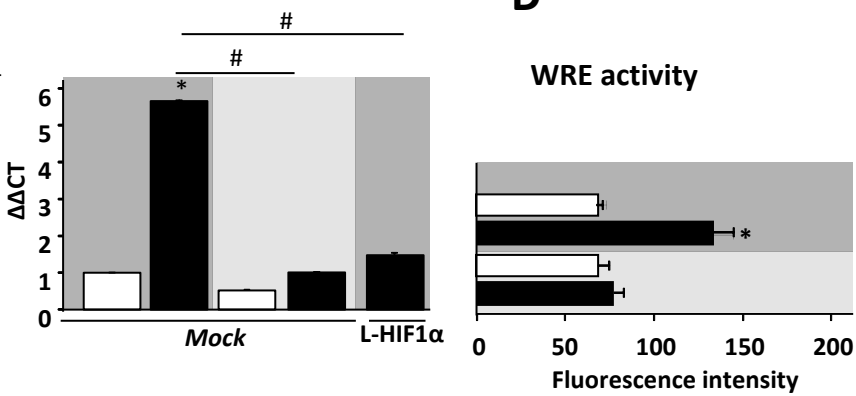
**B**



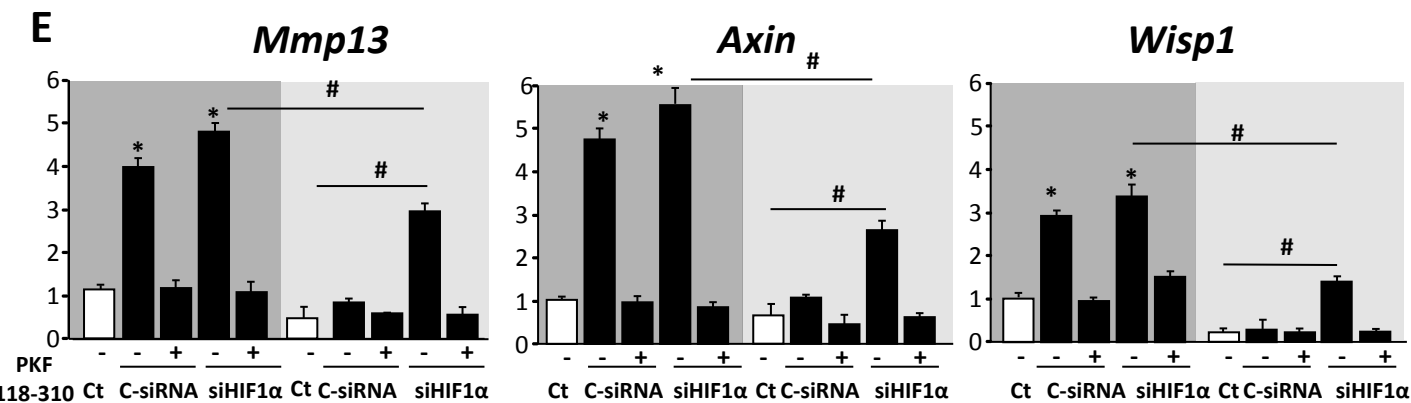
**C**



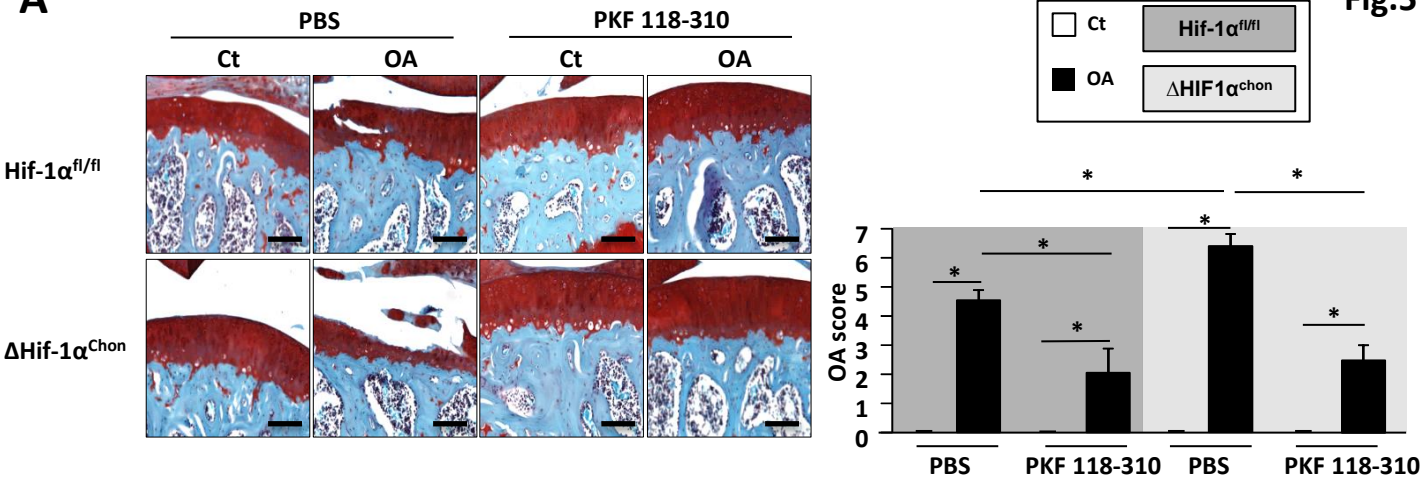
**D**



**E**

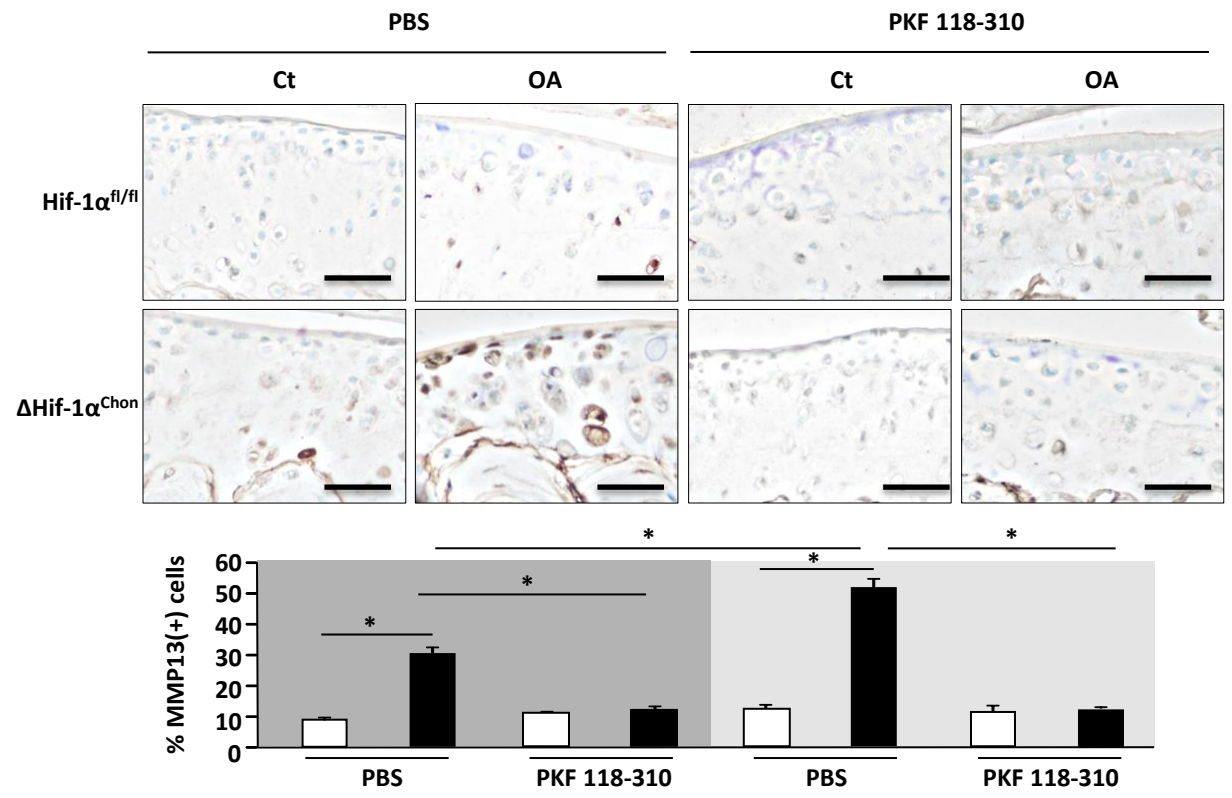


**A**

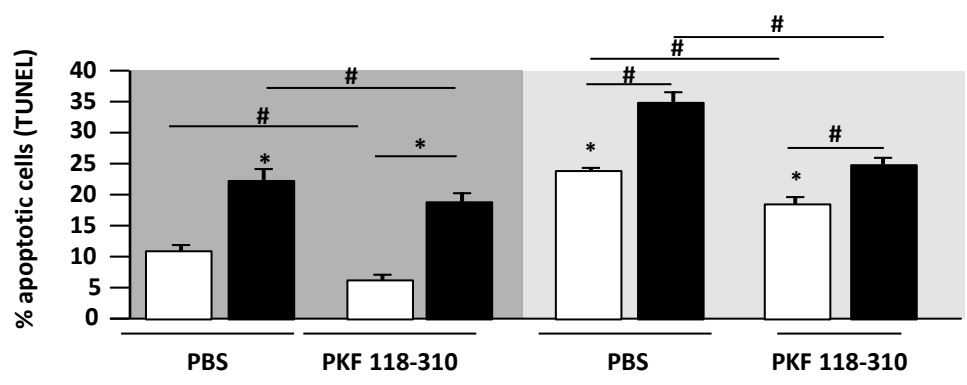


**B**

**MMP13**



**C**



$\beta$ -galactosidase immunostaining

Tamoxifen

