



HAL
open science

Integrity of white matter microstructure in alcoholics with and without Korsakoff's syndrome Human Brain Mapping Integrity of white matter microstructure in alcoholics with and without Korsakoff's syndrome

Shailendra Segobin, Ludivine Ritz, Coralie Lannuzel, Céline Boudehent, François Vabret, Francis Eustache, Hélène Beaunieux, Anne Lise Pitel

► **To cite this version:**

Shailendra Segobin, Ludivine Ritz, Coralie Lannuzel, Céline Boudehent, François Vabret, et al.. Integrity of white matter microstructure in alcoholics with and without Korsakoff's syndrome Human Brain Mapping Integrity of white matter microstructure in alcoholics with and without Korsakoff's syndrome. Human Brain Mapping, 2015, pp.2795-2808. 10.1002/hbm.22808 . inserm-01187746

HAL Id: inserm-01187746

<https://inserm.hal.science/inserm-01187746>

Submitted on 27 Aug 2015

HAL is a multi-disciplinary open access archive for the deposit and dissemination of scientific research documents, whether they are published or not. The documents may come from teaching and research institutions in France or abroad, or from public or private research centers.

L'archive ouverte pluridisciplinaire **HAL**, est destinée au dépôt et à la diffusion de documents scientifiques de niveau recherche, publiés ou non, émanant des établissements d'enseignement et de recherche français ou étrangers, des laboratoires publics ou privés.



Integrity of white matter microstructure in alcoholics with and without Korsakoff's syndrome

| | |
|-------------------------------|---|
| Journal: | <i>Human Brain Mapping</i> |
| Manuscript ID: | HBM-14-1178.R2 |
| Wiley - Manuscript type: | Research Article |
| Date Submitted by the Author: | n/a |
| Complete List of Authors: | Segobin, Shailendra; Inserm-EPHE-CHU-Université de Caen/Basse-Normandie, Unité U1077, Ritz, Ludivine; Cyceron, Lannuzel, Coralie; Inserm-EPHE-CHU-Université de Caen/Basse-Normandie, Unité U1077, Boudehent, Céline; Inserm-EPHE-CHU-Université de Caen/Basse-Normandie, Unité U1077, Vabret, François; Inserm-EPHE-CHU-Université de Caen/Basse-Normandie, Unité U1077, Eustache, Francis; Inserm-EPHE-CHU-Université de Caen/Basse-Normandie, Unité U1077, Beaunieux, Hélène; Inserm-EPHE-CHU-Université de Caen/Basse-Normandie, Unité U1077, Pitel, Anne-Lise; Inserm, EPHE, Université de Caen/Basse-Normandie, Unité U1077, GIP Cyceron, CHU de Caen |
| Keywords: | Alcoholism, Korsakoff's syndrome, Tract-Based Spatial Statistics, Classification, Frontocerebellar circuit, Papez Circuit |
| | |

SCHOLARONE™
Manuscripts

1
2
3 **1 Integrity of white matter microstructure in alcoholics with and without**
4
5 **2 Korsakoff's syndrome**
6

7
8 3 Shailendra Segobin^{1,2,3,4}, Ludivine Ritz^{1,2,3,4}, Coralie Lannuzel^{1,2,3,4}, Céline Boudehent^{1,2,3,4,5}, François
9 4 Vabret^{1,2,3,4,5}, Francis Eustache^{1,2,3,4}, Hélène Beaunieux^{1,2,3,4} and Anne Lise Pitel^{1,2,3,4}
10

11 5
12
13 6 1 INSERM, U1077, Caen, France
14

15 7 2 Université de Caen Basse-Normandie, UMR-S1077, Caen, France
16

17 8 3 Ecole Pratique des Hautes Etudes, UMR-S1077, Caen, France
18

19 9 4 Centre Hospitalier Universitaire, Caen, France
20

21 10 5 Centre Hospitalier Universitaire, service d'addictologie, Caen, France
22
23
24
25
26
27

28 13 **Corresponding author: AL Pitel**
29

30 14 **GIP Cyceron, Bd Becquerel,**
31

32 15 **Caen Cedex 14074, France**
33

34 16 **Tel.: +33 (0)2 31 47 02 47;**
35

36 17 **Fax: +33(0)2 31 47 02 75;**
37

38 18 **E-mail: pitel@cyceron.fr**
39
40
41
42
43
44
45
46
47
48
49
50
51
52
53
54
55
56
57
58
59
60

1
2
3 22 **Abstract**
4
5

6 23 Alcohol dependence results in two different clinical forms: “uncomplicated” alcoholism (UA)
7
8 24 and Korsakoff’s syndrome (KS). Certain brain networks are especially affected in UA and
9
10 25 KS: the frontocerebellar circuit (FCC) and the Papez circuit (PC). Our aims were 1) to
11
12 26 describe the profile of white matter (WM) microstructure in FCC and PC in the two clinical
13
14 27 forms, 2) to identify those UA patients at risk of developing KS using their WM
15
16 28 microstructural integrity as a biomarker.

17
18
19
20 29 Tract-based spatial statistics and non-parametric voxel-based permutation tests were used to
21
22 30 compare DTI data in 7 KS, 20 UA and 14 healthy controls. The two patient groups were also
23
24 31 pooled together and compared to controls. k-means classifications were then performed on
25
26 32 mean FA values of significant clusters across all subjects for 2 fiber tracts from the FCC (the
27
28 33 middle cerebellar peduncle and superior cerebellar peduncle) and 2 tracts from the PC (fornix
29
30 34 and cingulum).

31
32
33
34 35 We found graded effects of WM microstructural abnormalities in the PC of UA and KS. UA
35
36 36 patients classified at risk of developing KS using fiber tracts of the PC also had the lowest
37
38 37 scores of episodic memory. That finding suggests that WM microstructure could be used as a
39
40 38 biomarker for early detection of UA patients at risk of developing KS.

41
42
43
44 39 **Keywords:** alcoholism, Korsakoff’s syndrome, Fronto-cerebellar circuit, Papez’s circuit,
45
46 40 TBSS, classification
47

48
49 41
50

51
52 42
53
54

55 43
56
57
58
59
60

44 Introduction

45 The effects of chronic and excessive alcohol consumption on the human brain and
46 cognition result, among others, in two different clinical forms of alcohol-dependence, which
47 differ mainly by the extent of brain damage (Pitel et al. 2012). The more severe clinical form
48 is the Korsakoff's syndrome (KS, Korsakoff, 1889), which is defined by permanent and
49 debilitating neurological complications that arise from a combination of heavy alcohol
50 consumption and thiamine deficiency. Patients with KS suffer from retrograde (Kopelman.
51 1989; for review Oscar-Berman. 2012) and anterograde (Fama et al. 2012 for review)
52 amnesia, as well as ataxia (Sullivan et al. 2000), visuospatial deficits (Jacobson et al. 1990)
53 and executive dysfunctions (Oscar-Berman. 2012 for review). Postmortem (Harper and Kril.
54 1990; Harper, 2009; Mayes et al. 1988; Victor et al. 1971) and neuroimaging studies
55 (Colchester et al. 2001; Krabbendam et al. 2000; Pitel et al. 2009; Sullivan and Marsh, 2003;
56 Sullivan et al. 1999) revealed structural brain abnormalities in KS patients, especially in the
57 thalamus, cingulate cortex, cerebellum, mammillary bodies and white matter tracts of the
58 superior cerebellar vermis (Harper et al. 2003). Studies using magnetic resonance imaging
59 (MRI) have also shown shrinkage of the frontal and parietal cortices (Christie et al. 1988).
60 The impact of the pathology on the hippocampus is still under debate with some studies
61 reporting the region as preserved (Colchester et al. 2001; Squire et al. 1990), while others
62 found it damaged (Sullivan and Marsh, 2003; Visser et al. 1999)

63 The other clinical form of alcohol-dependence refers to patients often considered as
64 "Uncomplicated Alcoholics" (UA, Pitel et al. 2009, 2012; for review Oscar Berman et al,
65 2014; Zahr, 2014). Those patients, equally coined as "detoxified alcoholics" (Chanraud et al.
66 2007 for example), or "non-Korsakoff alcoholics" (Parsons, 1998 for example) are those
67 without ostensible and severe neurological complications or liver dysfunctions (Alexander-

1
2
3 68 Kauffman et al., 2006, Harper, 2007; Harper and Matsumoto, 2005; Matsumoto 2009; for
4
5 69 review Oscar-Berman et al, 2014; Zahr, 2014). This clinical form is characterized by its
6
7 70 heterogeneity but is known to result in mild-to-moderate cognitive deficits (Parsons and
8
9 71 Nixon. 1998; Sullivan et al. 2000) and brain damage (Chanraud et al. 2007; Rosenbloom et al.
10
11 72 2003). The neuropsychological profile includes impairment of working memory and
12
13 73 executive functions such as planning, organisation, categorisation, flexibility, inhibition, and
14
15 74 deduction of rules (Ambrose et al. 2001; Ihara et al. 2000; Noël et al. 2001; Pitel et al. 2007).
16
17 75 Episodic memory is also affected in UA with both encoding and retrieval processes being
18
19 76 impaired (Noël et al. 2012; Pitel et al. 2007). Neuroimaging investigations revealed gray
20
21 77 matter volume losses in the frontal, parietal and medial temporal lobes, the cerebellar cortex,
22
23 78 cerebellar vermis, as well as subcortical structures including the thalamus and the caudate
24
25 79 nucleus (Chanraud et al. 2007; Pfefferbaum et al. 1992; Shear et al. 1996; Sullivan. 2003;
26
27 80 Sullivan et al. 2003). Neuropathological studies reported a disruption of the cytoskeleton and
28
29 81 white matter shrinkage especially in the corpus callosum, superior frontal cortex, anterior
30
31 82 superior cerebellar vermis and the limbic system (Chanraud et al. 2009; Harris et al. 2008;
32
33 83 Pfefferbaum et al. 2006, 2009). While post-mortem examination of the human brain did not
34
35 84 indicate demyelination because of the inherent rapid disintegration of cellular membranes
36
37 85 following death, animal studies have shown thinning of myelin sheaths (Phillips et al. 1991).
38
39 86 Differences in microstructural integrity have also been found in-vivo in diffusion tensor
40
41 87 imaging (DTI) studies of alcoholic patients having lower fractional anisotropy (FA) in the
42
43 88 genu of the corpus callosum in men and the centrum semiovale in women (Pfefferbaum and
44
45 89 Sullivan, 2005). When WM fibre tracts were defined a priori, lower FA values were revealed
46
47 90 in the mesencephalic and pontine region, superior longitudinal fasciculus, external capsule,
48
49 91 fornix and cingulum (Chanraud et al. 2009; Harris et al. 2008; Pfefferbaum et al. 2006, 2009).
50
51
52
53
54
55
56
57
58
59
60

1
2
3 92 In both UA and KS, two brain networks and associated cognitive functions are
4
5 93 predominantly affected: the frontocerebellar circuit (Chanraud et al. 2010) and the Papez
6
7 94 circuit (Aggleton. 2012; Parsons. 1998). The frontocerebellar circuit (FCC), identified in non-
8
9 95 human primates using viral transneuronal tracing technology (Kelly and Strick, 2003),
10
11 96 consists of two distinct, parallel closed-loops within the cortico-thalamo-cerebellar circuitry.
12
13
14 97 The first one underlies executive functions and includes Brodmann areas 9 and 46 of the
15
16 98 dorsolateral prefrontal cortex, which receives input from the cerebellar crus I and II through
17
18 99 the thalamus, and projects back to the cerebellum through the pons. The second one
19
20
21 100 contributes to motor functions and encompasses the motor cortex, which receives input from
22
23 101 lobules IV-VI of the cerebellar vermis through the thalamus and feeds back to the cerebellum
24
25 102 via the pons (Chanraud et al. 2010). Diffusion tensor imaging technique and tractography
26
27 103 analyses (Mori et al. 2010) have shown that the superior cerebellar peduncle connects the
28
29 104 cerebellum to the thalamus, which is then connected to the dorsolateral prefrontal cortex
30
31 105 through the anterior limb of the internal capsule and the anterior corona radiata. The feedback
32
33 106 loop goes from the dorsolateral prefrontal cortex back to the pons via corticopontine tracts
34
35 107 and back to the cerebellum through the middle cerebellar peduncle. The Papez circuit (PC,
36
37 108 Aggleton and Brown, 1999; Papez, 1937), involved in episodic memory, includes the
38
39 109 hippocampal formation, which connects to the mammillary bodies via the fornix. The
40
41 110 thalamus then receives information from the mammillary bodies via the mammilo-thalamic
42
43 111 tract. The anterior limb of the internal capsule connects the thalamus to the cingulate gyrus,
44
45 112 which is in turn connected back to the hippocampus through the cingulum bundle.
46
47
48
49

50 113 The PC and the FCC are affected in both clinical forms, but not to the same extent,
51
52 114 hence the difference of clinical severity between UA and KS patients. In fact, the comparison
53
54 115 between these two clinical forms of alcohol-dependence revealed patterns of differences and
55
56 116 similarities in the profiles of cognitive impairments and brain structural deficits.
57
58
59
60

1
2
3 117 Neuropsychological and neuroimaging studies have shown that impairment of the FCC is
4
5 118 generally comparable in both UA and KS, whereas graded effects are observed for the PC
6
7 119 (Pitel et al. 2008, 2012). More precisely, it has been shown that while deficits in working
8
9 120 memory and executive functions did not differ significantly between UA and KS patients,
10
11 121 deficits in episodic memory are more severe in KS patients compared to UA (Butters and
12
13 122 Brandt, 1985; Fama et al. 2012; Pitel et al. 2008). Volumetric analyses of gray matter (Harper,
14
15 123 2009; Harper et al. 2003; Pitel et al. 2009, 2012; Sullivan and Pfefferbaum, 2009) have also
16
17 124 indicated that nodes belonging to the PC including the medial thalami and mammillary bodies
18
19 125 were more severely affected in KS compared to UA patients. Similar degrees of shrinkage
20
21 126 have been observed in both patient groups in some of the nodes of the FCC including the
22
23 127 frontal cortex but not in the pons and cerebellum, for which graded effects were observed
24
25 128 (Sullivan and Pfefferbaum, 2008). The few studies that have compared UA and KS patients
26
27 129 regarding white matter volumes indicated that the cerebellar white matter (Krill et al. 1997),
28
29 130 corpus callosum and thalamic radiations were more severely damaged in KS than in UA
30
31 131 (Harper et al. 2003; Pitel et al. 2012).

32
33
34
35
36
37 132 The comparison of neuropsychological functioning between UA and KS patients gave
38
39 133 rise to the hypothesis that the effects of chronic alcohol consumption lie along a continuum
40
41 134 from mild-to-moderate impairments in UA to severe ones in patients with KS (Butters and
42
43 135 Brandt, 1985; Parsons, 1998; Ryback, 1971). The existence of a continuum between these two
44
45 136 clinical forms reflects the heterogeneity within the UA group with some patients having
46
47 137 preserved results similar to those of healthy controls, while others have severe deficits close to
48
49 138 those of KS patients (Pitel et al. 2008). The latter ones are at risk to develop severe alcohol-
50
51 139 related neurological complications but they often go undiagnosed (Pitel et al. 2011) and
52
53 140 therefore do not receive appropriate treatment. Early identification of these patients would
54
55 141 help clinicians in optimising treatment outcome. Clinical, neuropsychological and
56
57
58
59
60

1
2
3 142 macrostructural brain biomarkers of risks for KS have been proposed. Previous studies have
4
5 143 suggested that a subgroup of UA patients with episodic memory impairments (Pitel et al.
6
7 144 2008) and thalamic shrinkage (Pitel et al. 2012) close to those of KS patients can be
8
9 145 identified. This subgroup of patients may even be clinically defined by the presence of signs
10
11 146 of Wernicke's encephalopathy (Pitel et al. 2011). How white matter microstructure can also
12
13
14 147 be used as a biomarker of KS has never been explored. The white matter microstructure and
15
16 148 structural connectivity has never been investigated in KS and therefore the integrity of the
17
18 149 fibres bundles has never been quantitatively compared between UA and KS. Comparisons of
19
20 150 white matter have so far been limited to neuropathological investigations (Harper, 2009) and
21
22 151 one voxel-based morphometry (VBM) study of white matter volumes (Pitel et al. 2012).
23
24
25 152 Those studies gave first insights regarding white matter volumes but did not provide a clear
26
27 153 picture of the differences in the microstructure of white matter bundles. The latter is better
28
29 154 represented by observing the differences in FA values of white matter fibre tracts, obtained
30
31 155 through DTI studies, under the assumption that FA is a structural biomarker that depicts white
32
33 156 matter disruption involving myelin, cytoskeleton and the axons' microtubule system
34
35 157 (Pfefferbaum et al. 2006). **We should however bear in mind that in absence of sound**
36
37
38 158 **methodological procedures, measurements of FA values could turn out to be artefactual**
39
40 159 **instead of reflecting impairments due to factors inherent to alcohol-dependence. One**
41
42 160 **example is the 'correspondence problem' (Smith et al. 2006) following poor spatial**
43
44 161 **normalization. A preserved white matter tract would be observed as impaired if what**
45
46 162 **are being effectively measured are FA values in crossing fibres which are inherently**
47
48 163 **lower.**
49
50

51
52 164 The first objective of the present study was therefore to describe the white matter
53
54 165 microstructure in UA and KS compared to healthy controls (HC) using a voxel-wise
55
56 166 approach. We hypothesize graded effects of compromised white matter integrity in the
57
58
59
60

1
2
3 167 bundles of the PC (KS<UA<HC) but not in those of the FCC ((KS=UA)<HC). Since the UA
4
5 168 group is classically heterogeneous, the second objective was to identify UA patients at risk of
6
7 169 developing KS through the analysis of white matter integrity across the tracts belonging to the
8
9
10 170 FCC and PC.

11 12 13 171 **Materials and Methods**

14 15 16 172 *Participants*

17
18
19 173 Twenty-seven patients (22 men, 5 women) with alcohol-dependence (DSM IV criteria,
20
21 174 American Psychiatric Association. 1994) and 14 healthy subjects (9 men, 5 women) were
22
23 175 included in the study. To be included, all participants had to be between 18 and 70 years old,
24
25 176 and to have French as their native language. No participant had a comorbid psychiatric
26
27 177 disorder (no other axis 1 of the DSM IV as evaluated by MINI 500, American Psychiatric
28
29 178 Association 2004), was under psychotropic medication, had a history of serious chronic
30
31 179 pathology (diabetes, hepatitis, HIV, endocrinal disorder, as revealed by participants' blood
32
33 180 tests), neurological problems (traumatic head injury causing loss of consciousness for >30
34
35 181 minutes, epilepsy, stroke, etc.) that might have affected cognitive function. No participant
36
37 182 fulfilled the DSM-IV criteria for abuse of another substance over the last 3 months, nor filled
38
39 183 the DSM-IV criteria for dependence of another substance (except tobacco). They had not
40
41 184 taken any other psychoactive substance for more than 5 times over the last month (except
42
43 185 alcohol for the patients) and had not participated in any neuropsychological study or had any
44
45 186 neuropsychological evaluation during the previous year. All participants gave their informed
46
47 187 consent to the study, which was approved by the local ethics committee. Their demographical
48
49 188 details are summarised in Table 1. All patients were recruited for this study while being
50
51 189 inpatients at Caen University Hospital. The study was carried out in line with the Declaration
52
53
54
55
56
57 190 of Helsinki (1964).
58
59
60

1
2
3 191 Of those 27 patients, 7 (6 men, 1 woman) filled the DSM IV criteria of persisting
4
5 192 amnesic disorder (American Psychiatric Association, 1994) and were therefore diagnosed as
6
7 193 KS patients. All KS patients had a history of heavy drinking (longer than 20 years), a Mini-
8
9 194 Mental State (MMS, Folstein, 1975) score of at least 20, were abstinent for at least 7 days and
10
11 195 were diagnosed with severely impaired episodic memory as revealed by a neuropsychological
12
13 196 examination. The consequences of their memory impairments were such that none of the KS
14
15 197 were able to go back to their previous jobs and all of them lived in sheltered accommodation
16
17 198 or were inpatients waiting for a place in an institution. It was difficult to obtain accurate
18
19 199 information about their alcohol intake due to their amnesia. The background information for
20
21 200 the KS came mainly from family members and medical records. For each KS patient, the
22
23 201 selection was made according to a codified procedure in a French officially registered centre
24
25 202 for addiction. The case of each patient was examined by a multidisciplinary team made up of
26
27 203 specialists in cognitive neuropsychology and behavioural neurology. Clinical and
28
29 204 neuroimaging investigations ruled out other possible causes of memory impairments
30
31 205 (particularly focal brain damage).
32
33
34
35
36

37 206 The 20 alcoholic patients without KS were considered as UA patients. They were
38
39 207 recruited by clinicians while being inpatients for alcohol-dependence at Caen University
40
41 208 Hospital. Although patients were early in abstinence (2.4 ± 3.1 days of sobriety prior to
42
43 209 inclusion), none of them presented physical symptoms of alcohol withdrawal as assessed by
44
45 210 the Cushman's scale (Cushman et al. 1985) at inclusion. They were interviewed with the
46
47 211 Alcohol Use Disorders Identification Test (AUDIT; (Gache et al. 2005)) and a modified
48
49 212 version of the semi-structured lifetime drinking history (Pfefferbaum et al. 1988). Measures
50
51 213 included the duration of alcohol use (in years), alcohol misuse (in years), alcohol dependence
52
53 214 (in years), number of withdrawal and daily alcohol consumption prior to treatment (in units, a
54
55 215 standard drink corresponding to a beverage containing 10 g of pure alcohol).
56
57
58
59
60

1
2
3 216 The control group (HC) was recruited locally mainly by word of mouth and to match
4
5 217 the demographics of the UA patients. Inclusion criteria were: a minimum MMS score of 26 or
6
7 218 a minimum MATTIS (Mattis, 1976) score of 129, and a maximum Beck Depression Index
8
9 219 (Beck et al. 1961) of 29. The maximum score at the Alcohol Use Disorders Test (AUDIT)
10
11 220 was 6 for women and 7 for men.
12
13

14
15 221 UA and HC were age- and education-matched ($p=0.723$ and $p=0.76$ respectively). KS
16
17 222 differed from both HC and UA in age, education (years of schooling) and MMSE scores. Age,
18
19 223 education, depression (Beck Depression Inventory, and anxiety scores (State-Trait Anxiety
20
21 224 Inventory (STAI) for adults with two forms Y-A for “state anxiety” and Y-B for “trait
22
23 225 anxiety”) (Spielberger et al. 1983) as well as nicotine dependence level (Fagerstrom Test,
24
25 226 (Heatherton et al. 1991)) are reported in Table 1.
26
27

28
29 227 All participants underwent a neuropsychological examination assessing intellectual
30
31 228 abilities (Information and Matrix Reasoning subtests of the WAIS III (Wechsler, 2001a)),
32
33 229 global cognitive function (MMSE; Folstein et al. 1975) and episodic memory (the French
34
35 230 version of the Free and Cued Selective Reminding Test FSCRT (Grober and Buschke. 1987;
36
37 231 Van der Linden, 2004). Neuropsychological performances are reported in Table 2.
38
39

40 41 232 *DTI data acquisition* 42

43
44 233 All participants underwent a DTI sequence on the Philips Achieva 3T MRI scanner
45
46 234 (Netherlands). 70 slices (slice thickness of 2mm, no gap) were acquired axially using a
47
48 235 diffusion weighted imaging spin echo (DWI-SE) sequence (32 directions at $b=1000$ s/mm²,
49
50 236 repetition time = 10000 ms; echo time = 82 ms; flip angle = 90°, field of view = 224x224
51
52 237 mm²; matrix= 112 x 112 and in-plane resolution of 2x2 mm²; one no-diffusion weighted
53
54 238 image at $b=0$ s/mm² was also acquired).
55
56
57
58
59
60

239 *DTI data processing*

240 The diffusion-weighted images (DWI) for all subjects were first pre-processed to create FA
241 images using the FSL Diffusion Toolbox (FDT) (<http://fsl.fmrib.ox.ac.uk/fsl/fslwiki/FDT>)
242 that is part of FSL 5.0 toolbox for medical image analysis (Smith et al. 2004). The FA images
243 were further processed using Tract Based Spatial Statistics (TBSS) for subsequent voxelwise
244 statistical analysis (Smith et al. 2006). TBSS presents an improvement on classical voxelwise
245 approaches like voxel based morphometry (VBM). More specifically, it first addresses the
246 “correspondence problem” faced by standard registration algorithms where it is difficult to
247 gauge whether the observed differences are indeed due to differences in tissue
248 volumes/density or are artefactual modifications that result from local misalignment. The
249 issue becomes more pertinent in the case of white matter tracts where a higher level of
250 precision is required to ensure that the FA values contained in the voxels come from exactly
251 the same part of WM tract across all subjects. TBSS addresses the problem by tailoring the
252 non-linear registration algorithm to the requirements of the DTI data, followed by projection
253 onto a tract representation that is an alignment invariant (referred to as the mean FA skeleton).
254 Such an approach also removes the need for applying a spatial smoothing for which the
255 choice of the smoothing kernel is deemed to be done in an arbitrary manner, and results
256 known to be highly dependent on the kernel size (Jones et al. 2005). Smoothing increases
257 partial volume effects between tissues such that it is difficult to differentiate between WM
258 differences that are due to the biological mechanism under investigation or an artefactual
259 measurement due to a mixture of tissues.

260 For each subject, the 32 DWI images were first corrected for distortions due to Eddy currents
261 and aligned to the $b=0$ s/mm^2 image using rigid-body registration for motion correction
262 (Jenkinson et al. 2002). FA images were then created by fitting a tensor model to the diffusion
263 images and were further processed using TBSS. Briefly, all subjects' FA data were aligned

1
2
3 264 into MNI space using the nonlinear registration tool (FNIRT), which uses a b-spline
4
5 265 representation of the registration warp field (Rueckert et al. 1999) resulting in FA maps of
6
7 266 matrix size of 182x218x182 and voxel size of 1x1x1 mm³. Next, the mean FA image was
8
9
10 267 calculated and thinned to create a mean FA skeleton, which represents the centres of all tracts
11
12 268 common to the group. Each subject's aligned FA image was threshold at 0.3 to exclude low
13
14 269 FA values that could be contaminated with partial volume effects from other non-white-
15
16 270 matter tissues and to minimise inter-subject variability. The resulting image is then projected
17
18 271 onto the mean skeleton by filling every voxel of the latter with the maximum FA value that
19
20 272 lies perpendicular to the skeleton structure. Voxel-based statistics are performed on these
21
22
23 273 'skeletonised' images.

24 25 26 274 *Statistical analyses*

27 28 29 275 A. Comparison of white matter integrity in HC, UA patients and KS patients in the 30 31 276 whole-brain (voxel-based analysis)

32
33
34 277 Non-parametric permutation tests (Nichols and Holmes, 2002) were performed between HC
35
36 278 and UA; HC and KS; and UA and KS groups. Age was included as a covariate to account for
37
38 279 between-group differences (KS being older than the two other groups). For each between-
39
40 280 group comparison, 5000 permutations were done, and the data corrected for multiple
41
42 281 comparisons (FWE, $p < 0.05$) using threshold-free cluster enhancement (TFCE; (Smith and
43
44 282 Nichols, 2009)) for cluster-wise correction. This statistical toolbox is implemented within
45
46
47 283 FSL 5.0. (<http://fsl.fmrib.ox.ac.uk/fsl/fslwiki/Randomise>).

48 49 50 284 B. Identification of UA patients at risk of developing KS

51
52
53 285 1. Because of the heterogeneity within the UA group, UA and KS patients were pooled
54
55 286 together to form a single group of alcohol-dependant patients (UASK). The UASK group

1
2
3 287 was then compared to the HC group using non-parametric permutation tests (5000
4
5 288 permutations, FWE $p < 0.05$, TFCE).
6
7 289 2. The John Hopkins University International Consortium for Brain Mapping (JHU-ICBM)
8
9 290 DTI-81 WM atlas (Mori *et al.* 2010), implemented as an atlas tool in FSL 5.0
10
11 291 (<http://fsl.fmrib.ox.ac.uk/fsl/fslwiki/Atlases>), was then used to extract and binarise clusters
12
13 292 highlighted in the previous between-group analysis (UASK vs HC). Only the WM fibre
14
15 293 tracts that belong to the FCC and PC were used to produce “fibre-cluster masks”. These
16
17 294 “fibre-cluster masks” were then employed to extract the mean FA value within each tract
18
19 295 belonging to the FCC and PC for each subject. Focus was laid on a couple of fibre tracts
20
21 296 only for each circuit. In that respect, the cingulum and the fornix were chosen for the PC
22
23 297 and the middle cerebellar peduncle and superior cerebellar peduncle for the FCC. These
24
25 298 are the tracts that are believed to offer less variability in terms of specificity to the PC and
26
27 299 FCC respectively, having a lower involvement in fibres connecting other parts of the brain
28
29 300 or involved in other circuitry.
30
31
32
33
34 301 3. For each fibre tract, a k-means clustering classification was then performed on the mean
35
36 302 FA values, with the algorithm constrained to separate the 41 participants into 2 groups.
37
38 303 The aim was to find which white matter fibre tract enables the identification of some UA
39
40 304 patients classified into the same group as KS patients. A reliable classification would
41
42 305 include all HC into one group, and all KS patients into the other group with the
43
44 306 heterogeneous UA group fitting into either of these. Those UA who will be sorted within
45
46 307 the same group as the KS patients will be deemed as UA_HIGH patients (for high risk of
47
48 308 developing KS) while those who will be sorted within the same group as the HC will be
49
50 309 labelled UA_LOW patients (for low risk of developing KS). It is hypothesised that a more
51
52 310 robust classification will be obtained when using FA values in the fibres of the PC than in
53
54
55
56
57
58
59
60

1
2
3 311 those of the FCC. Comparisons of episodic memory performance among the subsequent
4
5 312 subgroups should help in asserting the robustness of the classification step.
6

7 313 4. Between-group comparisons of episodic memory performance:
8

9 314 Episodic memory scores were compared between the groups of HC, UA_LOW,
10
11 315 UA_HIGH and KS using non-parametric Mann Whitney U tests. The hypothesis is that
12
13 316 the scores on the episodic memory test in UA_LOW patients will differ significantly from
14
15 317 the UA_HIGH and KS patients but not from HC. UA_HIGH patients are expected to
16
17 318 differ significantly from HC and UA_LOW and KS patients.
18
19

20 21 319 **Results**

22 23 24 320 A. Comparison of white matter integrity in HC, UA patients and KS patients

25 26 27 321 (i) *UA versus HC*

28
29 322 Non-parametric permutation tests (FWE, $p < 0.05$) between UA and HC showed lower FA
30
31 323 values in fibre tracts spread across the whole brain including the corpus callosum ($T_{\max} =$
32
33 324 6.01; $k = 6258$; $\eta^2 = 0.17$), the anterior limb of the internal capsule ($T_{\max} = 5.86$; $k = 742$;
34
35 325 $\eta^2 = 0.10$), the anterior corona radiata ($T_{\max} = 5.52$; $k = 2215$; $\eta^2 = 0.16$), the fornix ($T_{\max} = 5.91$;
36
37 326 $k = 560$; $\eta^2 = 0.15$); the cingulum ($T_{\max} = 4.95$; $k = 821$; $\eta^2 = 0.14$); the middle cerebellar
38
39 327 peduncle ($T_{\max} = 5.17$; $k = 1320$; $\eta^2 = 0.11$) and the superior cerebellar peduncle $T_{\max} = 4.92$;
40
41 328 $k = 252$; $\eta^2 = 0.15$) as shown in Fig. 1.
42
43

44
45 329 Note: Values for effect size (η^2) have been calculated from T-scores resulting from the non-
46
47 330 parametric permutation tests.
48

49 50 51 331 (ii) *KS versus HC*

52
53 332 The profile of WM structural impairment in KS versus HC was similar to that between UA
54
55 333 and HC. FA values were lower in KS than in HC in the same tracts as reported above but with
56
57 334 higher T and k values: corpus callosum ($T_{\max} = 10.52$; $k = 7279$; $\eta^2 = 0.26$), anterior corona
58
59
60

1
2
3 335 radiata ($T_{\max} = 7.45$; $k=2936$; $\eta^2=0.31$), anterior limb of the internal capsule ($T_{\max} = 7.00$;
4
5 336 $k=1179$; $\eta^2=0.23$); cingulum ($T_{\max} = 6.93$; $k=869$; $\eta^2=0.14$); the fornix ($T_{\max} = 6.60$; $k=693$;
6
7 337 $\eta^2=0.31$); the middle cerebellar peduncle ($T_{\max} = 6.30$; $k=1153$; $\eta^2=0.27$) and the superior
8
9 338 cerebellar peduncle $T_{\max} = 7.27$; $k=270$; $\eta^2=0.35$).

11
12
13 339 (iii) *UA versus KS*

14
15
16 340 Group differences between UA and KS were found mainly in the corpus callosum ($T_{\max} =$
17
18 341 4.93 ; $k=4453$; $\eta^2=0.139$) and anterior corona radiata ($T_{\max} = 4.9$; $k=932$; $\eta^2=0.13$). Other
19
20 342 tracts with significant differences were also observed but they either had low T-values or their
21
22 343 cluster sizes were small. For example, anterior limb of the internal capsule ($T_{\max} = 3.59$;
23
24 344 $k=163$; $\eta^2=0.11$); cingulum ($T_{\max} = 3.61$; $k=103$; $\eta^2=0.14$) and the fornix ($T_{\max} = 3.81$; $k=107$;
25
26 345 $\eta^2=0.16$). There were no significant differences in the middle and superior cerebellar
27
28 346 peduncles.

29
30
31
32 347 [FIGURE 1]

33
34 348 There was no gender effect in the UA and KS groups across all white matter fibre tracts. In
35
36 349 the control group, differences between men and women were significant for the cingulum
37
38 350 (Mann-Whitney U test, $p=0.014$). There was no correlation between FA measures and BDI
39
40 351 scores or years of education across all tracts for all 3 groups. There was also no correlation
41
42 352 between FA measures and the number of detoxifications in the UA group. The same analysis
43
44 353 could not be performed for the KS group since it was not possible to obtain complete and
45
46 354 accurate information regarding alcohol history for these patients.

47
48
49
50 355

51
52
53 356

54
55
56 357

1
2
3 358 B. Identification of UA patients at risk of developing KS

4
5 359 (i) *Comparison of white matter integrity between HC and UASK*

6
7
8 360 The comparison between HC and UASK (UA and SK patients pooled together) showed lower
9
10 361 FA values in the patients in all the tracts mentioned in the previous results, including the
11
12 362 middle cerebellar peduncle ($T_{\max} = 5.14$; $k=1457$; $\eta^2=0.10$); the superior cerebellar peduncle
13
14 363 ($T_{\max} = 5.20$; $k=278$; $\eta^2=0.14$); the fornix ($T_{\max} = 7.20$; $k=609$; $\eta^2=0.14$) and the cingulum
15
16 364 ($T_{\max} = 5.47$; $k=840$; $\eta^2=0.14$). Fig. 2 shows the white matter tracts of the FCC and PC that
17
18 365 are significantly disrupted in the UASK group compared to the HC group.

19
20
21
22 366 [FIGURE 2]

23
24 367
25
26
27 368 (ii) *Identification of UA at risk to develop KS for each fibre tract*

28
29
30 369 For all participants, mean FA values were extracted from significant fibre-clusters (see above)
31
32 370 for the middle and superior cerebellar peduncles, representing tracts from the FCC and the
33
34 371 cingulum and fornix, representing tracts from the PC. A k-means classification was then
35
36 372 performed on those tracts. Fig. 3 represents the distribution of the mean FA values for each
37
38 373 selected tract identified in the white matter atlas (Mori *et al*, 2010) to be part of the FCC and
39
40 374 PC.

41
42
43
44 375 With regard to white matter tracts within the PC, the k-means classification conducted on the
45
46 376 FA values in the cingulum and fornix showed an expected classification of all HC in one
47
48 377 group and all KS patients in another. Some UA patients were classified in the same group as
49
50 378 HC and can be therefore considered as UA_LOW, while others were classified in the same
51
52 379 group as KS and were thus qualified as UA_HIGH. The same patients were classified as
53
54 380 UA_HIGH for both the cingulum and the fornix, except for two of them (one for cingulum
55
56 381 and one for fornix). However, these 2 patients were those with the lowest FA values in the
57
58
59
60

1
2
3 382 subsequent UA_LOW class. Comparisons of mean FA values among the 4 subgroups for both
4
5 383 the cingulum and the fornix (ANOVA Kruskal-Wallis) have shown that the controls did not
6
7 384 differ from the UA_LOW group ($p=1$). KS differed significantly from HC ($p<0.001$) and
8
9 385 UA_LOW ($p=0.01$) but not UA_HIGH. UA_HIGH was significantly different from HC
10
11 386 ($p<0.001$) and UA_LOW ($p=0.01$).

12
13
14 387 Regarding the tracts of the FCC, the results of the classification seemed less reliable since
15
16 388 each of the two groups identified included a mix of KS patients, UA patients and HC.
17
18 389 Moreover, the number and the identity of the UA patients classified as UA_HIGH completely
19
20 390 differed between the two tracts of the FCC.
21
22

23
24 391 [FIGURE 3]
25

26 392
27

28
29 393 (iii) *Comparison of episodic memory performance in the UA_HIGH and UA_LOW groups*
30

31
32 394 Since a better classification of patients for UA_HIGH and UA_LOW were obtained for the
33
34 395 two white matter tracts of the PC as opposed to the FCC, we compared episodic memory
35
36 396 performances between the two subgroups of UA identified with the classification analysis
37
38 397 conducted on FA values in the fornix and cingulum individually. Non-parametric Mann-
39
40 398 Whitney U tests showed that UA_LOW did not differ from HC ($p=0.37$ for the classification
41
42 399 using the fornix and $p=0.32$ for the classification using the cingulum). UA_LOW differed
43
44 400 from UA_HIGH ($p=0.038$ for the classification using the fornix and $p=0.025$ for the
45
46 401 classification using the cingulum). UA_HIGH differed significantly from HC ($p=0.002$ for
47
48 402 both fornix and cingulum) and KS ($p=0.001$ for classification with the fornix and $p=0.002$ for
49
50 403 classification with the cingulum). The latter was significantly different to all the other 3
51
52 404 subgroups for both classifications ($p<0.001$). These results are illustrated in Fig. 4.
53
54
55

56
57 405 [FIGURE 4]
58
59
60

1
2
3 406 We conducted the same analysis on the performances on matrix reasoning, and forward and
4
5 407 backward block spans but found insignificant differences between the UA subgroups for
6
7 408 neither the cingulum nor the fornix (data not shown). Hence, the ability to identify UA
8
9 409 patients at risk of developing KS seems to be specific to performances in episodic memory
10
11 410 tasks.

12
13
14 411 Note that we have also tested classification with the corpus callosum but it yielded poor
15
16 412 results (data not shown since the corpus callosum is neither part of the FCC, nor the PC).
17
18 413

20 414 **Discussion**

21
22
23
24 415 The first aim of this study was to describe the profile of microstructural white matter
25
26 416 integrity in UA and KS in the whole brain, at a voxel-level, since most of the previous studies
27
28 417 had been carried out using a region of interest approach (with anatomical regions defined a
29
30 418 priori). In accordance with neuropathological (Harper et al. 2003; Kril et al. 1997) and
31
32 419 neuroimaging studies (Chanraud et al. 2010; Pfefferbaum and Sullivan, 2005; Pfefferbaum et
33
34 420 al. 2006, 2009), the present TBSS analysis of FA values in UA revealed widespread
35
36 421 compromised WM microstructure including notably fibers of the FCC and the PC. Using a
37
38 422 stringent statistical threshold (TFCE and FWE, $p < 0.05$), our voxel-based analyses have
39
40 423 successfully replicated previous DTI results in fibres defined a priori (Pfefferbaum et al.
41
42 424 2009) such as the superior longitudinal fasciculus, external capsule, fornix and cingulum.
43
44 425 Moreover, our analyses revealed compromised WM integrity in other fibre tracts such as the
45
46 426 internal capsule, cerebral peduncles, corona radiata and thalamic radiations, which has also
47
48 427 been reported in a TBSS study comparing alcoholics who have been abstinent for at least 5
49
50 428 years with healthy controls (Fortier et al. 2014). Contrary to previous neuropathological
51
52 429 (Harper et al. 2003) and neuroimaging studies (Chanraud et al. 2009; Pfefferbaum et al.
53
54 430 2009), we also found microstructural abnormalities in the middle and superior cerebellar
55
56
57
58
59
60

1
2
3 431 peduncles. The use of a voxel based approach may have enabled the observation of the latter
4
5 432 finding since a ROI approach, which would average the FA values within a region defined a
6
7 433 priori, would not reveal any localized impairments within those fibres. Thus, WM
8
9 434 abnormalities in the middle and superior cerebellar peduncles revealed by TBSS suggest that
10
11 435 disruption may be more localized than spread-throughout in those fibres.
12
13

14
15 436 Our study is the first to evaluate white matter microstructural integrity in KS patients.
16
17 437 When KS patients were compared to HC, the profile of WM abnormalities was similar to that
18
19 438 observed between UA and HC, in agreement with the patterns of GM and WM shrinkage
20
21 439 found in a recent VBM study (Pitel et al. 2012). Compromised WM microstructure in the
22
23 440 middle and superior cerebellar peduncles is in-line with previous investigations that have
24
25 441 shown significant shrinkage of the cerebellar white matter of KS patients (Harper et al. 2003;
26
27 442 Kril et al. 1997) and in proteomics studies where changes in the levels of thiamine-dependent
28
29 443 enzymes have been observed (Alexander-Kaufman et al. 2006).
30
31

32
33 444 Previous neuropsychological and neuroimaging (structural and functional) studies
34
35 445 have hypothesized that anterograde amnesia in KS patients is essentially due to a
36
37 446 disconnection within the PC (Warrington and Weiskrantz, 1982, Nahum et al. 2014). More
38
39 447 specifically, findings of abnormalities in diencephalic structures, including the thalamus and
40
41 448 mammillary bodies, and cortical structures from the frontal and medial temporal lobes have
42
43 449 pushed towards the hypothesis of a disruption between nodes belonging to this neural network
44
45 450 (Aupée et al, 2001; Renou et al. 2008; Kim et al. 2009). Our study provides consolidating
46
47 451 evidence of white matter disruptions in the PC that is linked to episodic memory deficits and
48
49 452 therefore amnesia (Kessels and Kopelman, 2012 for review). Based on the substantial role of
50
51 453 the cerebellum in cognitive processes and its connections with cortical areas, damaged FCC
52
53 454 has been hypothesized to be involved in working memory and executive dysfunction in KS
54
55 455 (Wijnia and Goossenssen, 2010). Our data confirm compromised WM integrity in the
56
57
58
59
60

1
2
3 456 cerebellum and especially disruption of the middle and superior cerebellar peduncles. In
4
5 457 summary, cognitive deficits observed in KS patients, including amnesia, stems from a
6
7 458 disconnection of neural networks, which can in turn be due to abnormalities in the nodes of
8
9 459 the network(s), disruption of white matter tracts linking those nodes, or abnormal synaptic
10
11 460 activity between the nodes. While our study confirms the disruption of white matter tracts in
12
13 461 specific brain networks, and another study showed an absence of atrophy within connected
14
15 462 regions (Nahum et al, 2014), it is still difficult to evaluate the cascade of events
16
17 463 (neurotransmission dysfunction – local or global network disruption – cellular
18
19 464 damage/atrophy) that effectively governs the pathophysiological mechanism of KS when
20
21 465 using a cross-sectional paradigm,. Longitudinal studies are required to concretely establish
22
23 466 this mechanism.

24
25
26
27
28 467 Our direct voxel-based comparison between UA and KS patients showed significant
29
30 468 differences mainly in the corpus callosum, which follows previous volumetric studies that
31
32 469 has reported further volume loss in the corpus callosum in alcoholic patients with Wernicke's
33
34 470 Encephalopathy than those alcoholic patients without (Lee et al., 2005) and the other one
35
36 471 between UA and KS (Pitel et al, 2012). The abnormalities in the microstructural integrity of
37
38 472 the corpus callosum have also been hypothesized to be due to thiamine deficiency as observed
39
40 473 in a study with rats (He et al, 2007).

41
42
43
44 474 Contrary to our initial hypotheses, a clear graded effect of deficits in the PC was not
45
46 475 observed. This can be attributed to our sample size and to the heterogeneity of the UA group.
47
48 476 As neurological complications from UA to KS lie along a continuum (Ryback, 1971), it is
49
50 477 difficult to observe a distinct pattern of microstructural degradation between these 2 groups,
51
52 478 justifying the need to divide the UA group into sub-groups to better observe their underlying
53
54 479 pathological mechanisms. By first combining the UA and KS groups, the statistical power to
55
56 480 detect all regions affected in alcohol dependent patients was increased (Monnig et al. 2013),
57
58
59
60

1
2
3 481 ensuring that the subsequent classification step did not disregard any white matter tracts that
4
5 482 are potential structural biomarkers for identifying alcoholics at risk to develop neurological
6
7 483 complications such as KS.
8
9

10 484 The classification step revealed that the use of DTI may be particularly relevant as a
11
12 485 structural biomarker towards the early identification of UA patients at risk of developing KS.
13
14 486 The early identification is important for clinicians to apply the correct and optimal treatment
15
16 487 with the aim of preventing severe, debilitating and irreversible neurological complications.
17
18 488 Our analysis provides consolidating evidence of the PC, as opposed to the FCC, being an
19
20 489 appropriate neuroanatomical substrate for identifying UA patients that can potentially develop
21
22 490 KS (Pitel et al. 2012). The statistical comparisons of the mean FA values between the
23
24 491 subgroups of subjects have confirmed the robustness of the classification step. The fact that
25
26 492 there is a clear separation between HC and KS as well as consistent classification of the UA
27
28 493 subgroups for the cingulum and fornix complements volumetric findings that have shown
29
30 494 graded effects in the mammillary bodies, the hippocampus and the thalamus (Sullivan and
31
32 495 Pfefferbaum, 2009). In a previous study (Pitel et al. 2012), the volume of the thalamus was
33
34 496 found to be comparable between some of the UA patients and the KS ones, reinforcing
35
36 497 neuropsychological data that have shown the same trend in episodic memory deficits (Pitel et
37
38 498 al. 2008). While the volume of the thalamus was not explored in the present study, we
39
40 499 confirm that UA patients classified at risk to develop KS based on WM microstructural
41
42 500 abnormalities in the PC had the lowest episodic memory scores. Interestingly, it was also
43
44 501 observed that 4 patients out of 10 classified as UA_LOW filled none of Caine's criteria for
45
46 502 Wernicke's encephalopathy (Caine et al. 1997; Pitel et al. 2011), 4 patients filled one criterion
47
48 503 and 2 filled more than 2 criteria. For the UA_HIGH subgroup, 2 patients filled no criterion, 4
49
50 504 filled 1 criterion and 4 filled more than 2 criteria. The number of signs of Wernicke's
51
52 505 encephalopathy did not differ between the UA_LOW and UA_HIGH (Chi-squared test, data
53
54
55
56
57
58
59
60

1
2
3 506 not shown). Our refined neuroimaging analyses confirm that a neuropsychological evaluation,
4
5 507 especially targeting episodic memory, is highly recommended in clinical settings, where
6
7 508 neuroimaging tools are not available, to identify patients at risk of developing KS. Taken
8
9
10 509 together, the analysis of microstructural integrity within the fornix and cingulum, in
11
12 510 combination with scores of episodic memory, thalamic volume and signs of Wernicke's
13
14 511 encephalopathy, could give a reliable depiction of whether a UA patient is at risk of
15
16 512 developing KS. Our study is thus a positive iteration to the heuristic value of the continuity
17
18 513 hypothesis (Butters and Brandt, 1985; Parsons, 1998; Pitel et al. 2008; Ryback, 1971). While
19
20 514 this inherent heterogeneity in the UA group enabled us to detect alcoholics at risk to develop
21
22 515 neurological complications, the currently used average neuropsychological, structural and
23
24 516 functional description of a UA group does not reflect the heterogeneity of individual profiles
25
26 517 in clinical settings.
27
28
29
30
31
32

518

33 519 **Conclusions and further works**

34
35
36
37 520 TBSS has allowed us to describe the profile of white matter integrity at a voxel-level in UA
38
39 521 and KS patients. While the chronological position of white matter disruption is still unknown
40
41 522 in the cascade of structural and functional events that govern the pathophysiological
42
43 523 mechanism underlying the neurotoxicity of alcohol, we have shown the potential of DTI data
44
45 524 to identify uncomplicated alcoholics at risk of developing KS. The method paves the way for
46
47 525 more in depth analysis of this subgroup in order to better understand the mechanism
48
49 526 underlying these two clinical forms. Multi-modal neuroimaging, combined with biological
50
51 527 and neuropsychological analyses will enable researchers to explore the characteristics of these
52
53 528 clinical forms in terms of detailed microstructure, regional volume, function, enzyme
54
55 529 metabolism and cognitive deficits. The specificity of the subgroup of patients at risk to
56
57
58
59
60

1
2
3
4
5
6
7
8
9
10
11
12
13
14
15
16
17
18
19
20
21
22
23
24
25
26
27
28
29
30
31
32
33
34
35
36
37
38
39
40
41
42
43
44
45
46
47
48
49
50
51
52
53
54
55
56
57
58
59
60

530 develop KS is also likely to be confirmed via longitudinal studies in which the progress of the
531 pathology can be monitored and the efficiency of the treatment can be assessed and optimised.

532

For Peer Review

1
2
3 533 **Figure legends:**
4 534

5 535 **Figure 1** Voxel by voxel comparisons of FA values between HC and UA (top row), HC and
6
7 536 KS (middle row) and UA and KS (bottom row) using non-parametric permutation tests (5000
8
9 537 permutations, FWE $p < 0.05$, TFCE for cluster-wise correction). p-value maps are shown as (1-
10
11 538 p) images, displayed on a T1-weighted MRI in MNI space.
12
13

14 539

15
16 540 **Figure 2** Voxel by voxel comparisons of FA values between HC and UASK using non-
17
18 541 parametric permutation tests (5000 permutations, FWE $p < 0.05$, and TFCE for cluster-wise
19
20 542 correction). p-value maps are shown as (1-p) images, displayed on a T1-weighted MRI in
21
22 543 MNI space.
23
24

25 544

26
27 545 **Figure 3** Distribution of the mean FA values for the selected white matter tracts within the
28
29 546 fronto-cerebellar circuit (mcp = middle cerebellar peduncle, scp = superior cerebellar
30
31 547 peduncle) and the Papez circuit (fornix and cing = cingulum). Horizontal black lines represent
32
33 548 the separation between the 2 identified clusters.
34
35

36 549

37
38 550 **Figure 4** Episodic memory performance (sum of the 3 free-recalls of FCSRT) in the HC,KS
39
40 551 and subgroups UA_LOW and UA_HIGH.
41

42
43 552 UA_LOW and UA_HIGH have been identified using k-means classification conducted on
44
45 553 means FA values of significant fibre-clusters in the fornix and the cingulum bundle.
46

47 554 * : sig different from HC; § : sig different from UA_LOW; ¥ : sig different from UA_HIGH
48
49
50
51
52
53
54
55
56
57
58
59
60

555 **References**

556 Aggleton JP, Brown MW (1999): Episodic memory, amnesia, and the hippocampal-anterior
557 thalamic axis. *Behav Brain Sci.* 22: 425–444.

558 Aggleton JP (2012): Multiple anatomical systems embedded within the primate medial
559 temporal lobe: Implications for hippocampal function . *Neurosci Biobehav Rev.* 36: 1579–
560 1596.

561 Alexander-Kaufman K, James G, Sheedy D, Harper C, Matsumoto I (2006): Differential
562 protein expression in the prefrontal white matter of human alcoholics: a proteomics study.
563 *Mol psychiatry.* 11: 56–65.

564 Ambrose ML, Bowden SC, Whelan G (2001): Working Memory Impairments in Alcohol-
565 Dependent Participants Without Clinical Amnesia. *Alcohol Clin Exp Res.* 25: 185–191.

566 American Psychiatric Association. *Diagnostic and Statistical Manual of Mental Disorders.* 4th
567 ed., Text Rev. Author, Washington, DC 2000.

568 Aupée AM, Desgranges B, Eustache F, Lalevée C, de la Sayette V, Viader F, Baron JC
569 (2001) Voxel-based mapping of brain hypometabolism in permanent amnesia with PET.
570 *Neuroimage.* 13(6): 1164-1173

571 Beck A, Ward C, Mendelson M, Mock J, Erbaugh J (1961): An inventory for measuring
572 depression. *Arch Gen Psychiatry.* 4: 561–571.

573 Butters N, Brandt J (1985): The continuity hypothesis: the relationship of long-term
574 alcoholism to the Wernicke-Korsakoff syndrome. *Recent Dev Alcohol.* 3: 207–226.

- 1
2
3 575 Caine D, Halliday GM, Kril JJ, Harper CG (1997): Operational criteria for the classification
4
5 576 of chronic alcoholics: identification of Wernicke's encephalopathy. *J Neurol Neurosurg*
6
7 577 *Psychiatry* 62: 51–60.
8
9
10 578 Chanraud S, Martelli C, Delain F, Kostogianni N, Douaud G, Aubin HJ, *et al.* (2007) : Brain
11
12 579 morphometry and cognitive performance in detoxified alcohol-dependents with preserved
13
14 580 psychosocial functioning. *Neuropsychopharmacology*. 32: 429–438.
15
16
17
18 581 Chanraud S, Pitel AL, Rohlfing T, Pfefferbaum A, Sullivan EV (2010): Dual tasking and
19
20 582 working memory in alcoholism: relation to frontocerebellar circuitry.
21
22 583 *Neuropsychopharmacology*. 35: 1868–1878.
23
24
25
26 584 Chanraud S, Reynaud M, Wessa M, Penttilä J, Kostogianni N, Cachia A, *et al.* (2009):
27
28 585 Diffusion tensor tractography in mesencephalic bundles: relation to mental flexibility in
29
30 586 detoxified alcohol-dependent subjects. *Neuropsychopharmacology*. 34: 1223–1232.
31
32
33
34 587 Chanraud S, Zahr N, Sullivan EV, Pfefferbaum A (2010): MR diffusion tensor imaging: a
35
36 588 window into white matter integrity of the working brain. *Neuropsychol Rev*. 20: 209–225.
37
38
39 589 Christie JE, Kean DM, Douglas RHB, Engleman HM, St. Clair D, Blackburn IM (1988):
40
41 590 Magnetic resonance imaging in pre-senile dementia of the Alzheimer-type, multi-infarct
42
43 591 dementia and Korsakoff's syndrome. *Psychol Med*. 18: 319–329.
44
45
46
47 592 Colchester A, Kingsley D, Lasserson D, Kendall B, Bello F, Rush C, *et al.* (2001): Structural
48
49 593 MRI volumetric analysis in patients with organic amnesia, 1: methods and comparative
50
51 594 findings across diagnostic groups. *J Neurol Neurosurg Psychiatry*. 71: 13–22.
52
53
54
55 595 Fama R, Pitel AL, Sullivan EV (2012): Anterograde episodic memory in Korsakoff
56
57 596 syndrome. *Neuropsychol Rev*. 22: 93–104.
58
59
60

- 1
2
3 597 Folstein MF, Folstein SE, McHugh PR (1975): Mini-mental state. A practical method for
4
5 598 grading the cognitive state of patients for the clinician. *J Psychiatr Res.* 12:189–198.
6
7
8
9 599 Gache P, Michaud P, Landry U, Accietto C, Arfaoui S, Wenger O, *et al.* (2005) : The Alcohol
10
11 600 Use Disorders Identification Test (AUDIT) as a Screening Tool for Excessive Drinking in
12
13 601 Primary Care: Reliability and Validity of a French Version. *Alcohol Clin Exp Res.* 29: 2001–
14
15 602 2007.
16
17
18 603 Grober E, Buschke H (1987): Genuine memory deficits in dementia. *Dev Neuropsychol.* 3:
19
20 604 13–36.
21
22
23
24 605 Harper CG, Kril JJ (1990): Neuropathology of alcoholism. *Alcohol and alcoholism*; 25: 207–
25
26 606 216.
27
28
29 607 Harper C, Dixon G, Sheedy D, Garrick T (2003): Neuropathological alterations in alcoholic
30
31 608 brains. Studies arising from the New South Wales Tissue Resource Centre. *Prog*
32
33 609 *Neuropsychopharmacol Biol Psychiatry.* 27: 951–961.
34
35
36
37 610 Harper C, Matsumoto I (2005): Ethanol and brain damage. *Current Opinion in Pharmacology.*
38
39 611 5:73-78.
40
41
42
43 612 Harper C (2007): The neurotoxicity of alcohol. *Human and experimental toxicology.* 26: 251-
44
45 613 257.
46
47
48 614 Harper C (2009): The neuropathology of alcohol-related brain damage. *Alcohol and*
49
50 615 *alcoholism.* 44: 136–140.
51
52
53
54
55
56
57
58
59
60

- 1
2
3 616 Harris GJ, Jaffin SK, Hodge SM, Kennedy D, Caviness VS, Marinkovic K, *et al.* (2008):
4
5 617 Frontal white matter and cingulum diffusion tensor imaging deficits in alcoholism. *Alcohol*
6
7 618 *Clin Exp Res.* 32: 1001–1013.
8
9
10 619 He X, Sullivan EV, Stankovic RK, Harper CG, Pfefferbaum A (2007): Interaction of
11
12 620 Thiamine deficiency and voluntary alcohol consumption disrupts rat corpus callosum
13
14 621 ultrastructure. *Neuropsychopharmacology.* 32: 2207-2216
15
16
17
18 622 Heatherton TF, Kozlowski LT, Frecker RC, Fagerström KO (1991): The Fagerström Test for
19
20 623 Nicotine Dependence: a revision of the Fagerström Tolerance Questionnaire. *Br J Addict.*
21
22 624 86:1119–1127.
23
24
25
26 625 Ihara H, Berrios GE, London M (2000): Group and case study of the dysexecutive syndrome
27
28 626 in alcoholism without amnesia. *J Neurol Neurosurg Psychiatry.* 68: 731–737.
29
30
31
32 627 Jacobson RR, Acker CF, Lishman WA (1990): Patterns of neuropsychological deficit in
33
34 628 alcoholic Korsakoff's Syndrome. *Psychol Med.* 20: 321–334.
35
36
37
38 629 Jenkinson M, Bannister P, Brady M, Smith S (2002): Improved Optimization for the Robust
39
40 630 and Accurate Linear Registration and Motion Correction of Brain Images. *NeuroImage.* 17:
41
42 631 825–841.
43
44
45 632 Jones DK, Symms MR, Cercignani M, Howard RJ (2005): The effect of filter size on VBM
46
47 633 analyses of DT-MRI data. *NeuroImage.* 26: 546–554.
48
49
50
51 634 Kelly RM, Strick PL (2003): Cerebellar loops with motor cortex and prefrontal cortex of a
52
53 635 nonhuman primate. *J Neurosci.* 23: 8432–8444.
54
55
56
57
58
59
60

- 1
2
3 636 Kessels RP, Kopelman MD (2012): Context memory in Korsakoff's syndrome.
4
5 637 Neuropsychol Rev. 22(2): 117-131
6
7
8
9 638 Kim E, Ku J, Namkoong K, Lee W, Lee KS, Park J-Y *et al.* (2009) : Mammillothalamic
10
11 639 functional connectivity and memory function in Wernicke's encephalopathy. Brain. 132: 369-
12
13 640 376.
14
15
16 641 Kopelman Michael D (1989): Remote and autobiographical memory, temporal context
17
18 642 memory and frontal atrophy in Korsakoff and Alzheimer patients. Neuropsychologia. 27:
19
20 643 437-460.
21
22
23
24 644 Korsakoff S (1889) : Etude medico-psychologique sur une forme des maladies de la mémoire.
25
26 645 Revue Philosophie. 20: 501-530.
27
28
29
30 646 Krabbendam L, Visser PJ, Derix MMA, Verhey F, Hofman P, Verhoeven W, *et al.* (2000):
31
32 647 Normal Cognitive Performance in Patients With Chronic Alcoholism in Contrast to Patients
33
34 648 With Korsakoff's Syndrome. J Neuropsychiatry Clin Neurosci. 12(1): 44-50.
35
36
37
38 649 Kril JJ, Halliday GM, Svoboda MD, Cartwright H (1997): The cerebral cortex is damaged in
39
40 650 chronic alcoholics. Neuroscience. 79: 983-998.
41
42
43 651 Lee S-T, Jung Y-M, Na DL, Park SH, Kim M (2005): Corpus callosum atrophy in Wernicke's
44
45 652 encephalopathy. J Neuroimaging. 15: 367-372
46
47
48
49 653 Van der Linden M (2004) : L'évaluation des troubles de la mémoire : Présentation de quatre
50
51 654 tests de mémoire épisodique. Collectif 2004.
52
53
54 655 Matsumoto I (2009): Proteomics approach in the study of the pathophysiology of alcohol-
55
56 656 related brain damage. Alcohol Alcohol. 44: 171-176.
57
58
59
60

- 1
2
3 657 Mayes AR, Meudell PR, Mann D, Pickering A (1988): Location of Lesions in Korsakoff's
4
5 658 Syndrome: Neuropsychological and Neuropathological Data on Two Patients. *Cortex*. 24:
6
7 659 367–388.
8
9
10 660 Mattis S (1976): Mental status examination for organic mental syndrome in the elderly
11
12 661 patients. In: Bellak L, Karasu T (eds). *Geriatrics Psychiatry: a Handbook for Psychiatrists and*
13
14 662 *Primary Care Physicians*. New York: Grune & Stratton. 77-121.
15
16
17
18 663 Monnig MA, Caprihan A, Yeo RA, Gasparovic C, Ruhl DA, Lysne P, *et al.* (2013): Diffusion
19
20 664 tensor imaging of white matter networks in individuals with current and remitted alcohol use
21
22 665 disorders and comorbid conditions. *Psychol Addict Behav*. 27(2):455-465.
23
24
25
26 666 Mori S, Van Zijl PCM, Oishi K, Faria AV (2010): *MRI Atlas of Human White Matter 2nd*
27
28 667 *Edition*. Elsevier Science.
29
30
31
32 668 Nahum L, Pignat J-M, Bouzerda-Wahlen A, Gabriel D, Liverani MC, *et al.*, (2014) : Neural
33
34 669 correlate of anterograde amnesia in Wernicke-Korsakoff syndrome. *Brain Topogr*.
35
36
37 670 Nichols TE, Holmes AP (2002): Nonparametric permutation tests for functional
38
39 671 neuroimaging: A primer with examples. *Hum Brain Mapp*. 15: 1–25.
40
41
42
43 672 Noël X, Van der Linden M, Schmidt N (2001): Supervisory attentional system in nonamnesic
44
45 673 alcoholic men. *Arch Gen Psychiatry*. 58: 1152–1158.
46
47
48
49 674 Noël X, Van Der Linden M, Brevers D, Campanella S, Hanak C, Kornreich C, *et al.* (2012):
50
51 675 The contribution of executive functions deficits to impaired episodic memory in individuals
52
53 676 with alcoholism. *Psychiatry Res*. 198: 116–122.
54
55
56
57
58
59
60

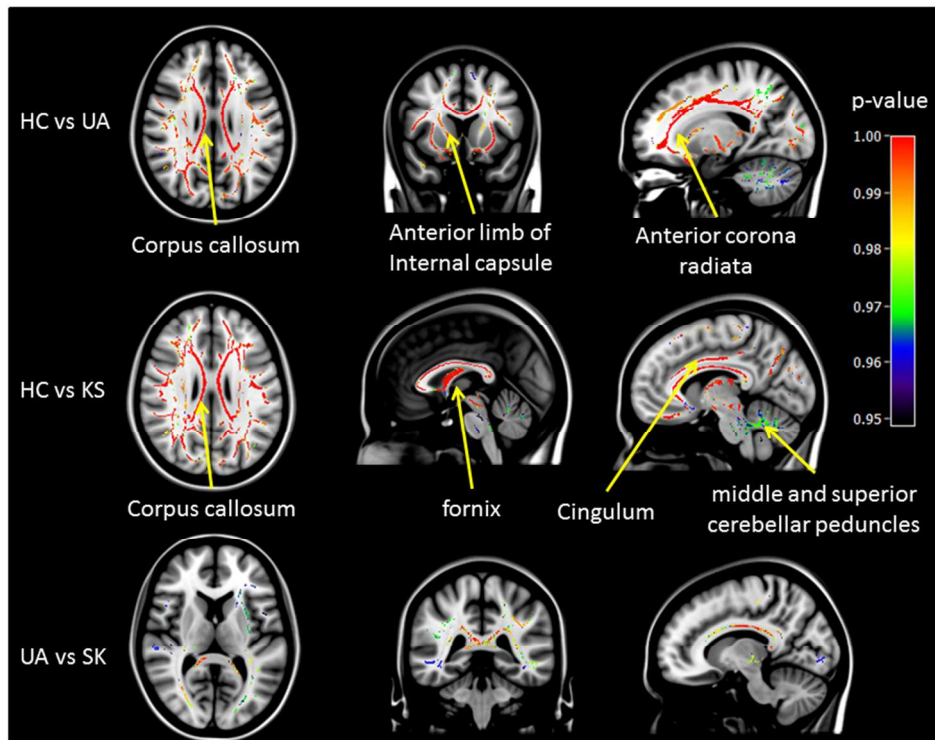
- 1
2
3 677 Oscar-Berman M (2012): Function and dysfunction of prefrontal brain circuitry in alcoholic
4
5 678 Korsakoff's syndrome. *Neuropsychol Rev.* 22: 154–169.
6
7
8
9 679 Oscar-Berman M, Valmas MM, Sawyer KS, Ruiz SM, Luhar RB, Gravitz ZR (2014) Profiles
10
11 680 of impaired, spared, and recovered neuropsychologic processes in alcoholism. *Handb Clin*
12
13 681 *Neurol.*125:183-210.
14
15
16 682 Papez J (1937): A proposed mechanism of emotion. *Arch Neurol Psychiatry.* 28: 725–743.
17
18
19 683 Parsons OA (1998): Neurocognitive deficits in alcoholics and social drinkers: a continuum?
20
21 684 *Alcohol Clin Exp Res.* 22: 954–961.
22
23
24
25 685 Parsons OA, Nixon SJ (1998): Cognitive functioning in sober social drinkers: a review of the
26
27 686 research since 1986. *J Stud Alcohol.* 59: 180–190.
28
29
30
31 687 Pfefferbaum A, Adalsteinsson E, Sullivan EV (2006): Supratentorial profile of white matter
32
33 688 microstructural integrity in recovering alcoholic men and women. *Biol Psychiatry.* 59: 364–
34
35 689 372.
36
37
38 690 Pfefferbaum A, Lim KO, Zipursky RB, Mathalon DH, Rosenbloom MJ, Lane B, *et al.* (1992):
39
40 691 Brain Gray and White Matter Volume Loss Accelerates with Aging in Chronic Alcoholics: A
41
42 692 Quantitative MRI Study. *Alcohol Clin Exp Res.* 16: 1078–1089.
43
44
45
46 693 Pfefferbaum A, Rosenbloom MJ, Crusan K, Jernigan TL (1988): Brain CT Changes in
47
48 694 Alcoholics: Effects of Age and Alcohol Consumption. *Alcohol Clin Exp Res.* 12: 81–87.
49
50
51
52 695 Pfefferbaum A, Rosenbloom MJ, Rohlfing T, Sullivan EV (2009): Degradation of association
53
54 696 and projection white matter systems in alcoholism detected with quantitative fiber tracking.
55
56 697 *Biol Psychiatry.* 65: 680–690.
57
58
59
60

- 1
2
3 698 Pfefferbaum A, Sullivan EV (2005): Disruption of brain white matter microstructure by
4
5 699 excessive intracellular and extracellular fluid in alcoholism: evidence from diffusion tensor
6
7 700 imaging. *Neuropsychopharmacology*. 30: 423–432.
- 8
9
10
11 701 Phillips DE, Krueger SK, Rydquist JE (1991) : Short- and long-term effects of combined pre-
12
13 702 and postnatal ethanol exposure (three trimester equivalency) on the development of myelin
14
15 703 and axons in rat optic nerve. *Int J Dev Neurosci*. 9: 631–647.
- 16
17
18 704 Pitel AL, Aupée AM, Chételat Gaël, Mézenge F, Beaunieux H, De la Sayette V, *et al.* (2009):
19
20 705 Morphological and glucose metabolism abnormalities in alcoholic Korsakoff's syndrome:
21
22 706 group comparisons and individual analyses. *PloS One*. 4: e7748.
- 23
24
25
26 707 Pitel AL, Beaunieux H, Witkowski T, Vabret F, Guillery-Girard B, Quinette P, *et al.* (2007):
27
28 708 Genuine episodic memory deficits and executive dysfunctions in alcoholic subjects early in
29
30 709 abstinence. *Alcohol Clin Exp Res*. 31: 1169–1178.
- 31
32
33
34 710 Pitel AL, Beaunieux Hélène, Witkowski T, Vabret F, De la Sayette V, Viader F, *et al.* (2008):
35
36 711 Episodic and working memory deficits in alcoholic Korsakoff patients: the continuity theory
37
38 712 revisited. *Alcohol Clin Exp Res*. 32: 1229–1241.
- 39
40
41
42 713 Pitel AL, Chételat G, Le Berre AP, Desgranges B, Eustache F, Beaunieux H (2012):
43
44 714 Macrostructural abnormalities in Korsakoff syndrome compared with uncomplicated
45
46 715 alcoholism. *Neurology*. 78: 1330–1333.
- 47
48
49
50 716 Pitel AL, Zahr NM, Jackson K, Sassoon SA, Rosenbloom MJ, Pfefferbaum A, *et al.* (2011):
51
52 717 Signs of preclinical Wernicke's encephalopathy and thiamine levels as predictors of
53
54 718 neuropsychological deficits in alcoholism without Korsakoff's syndrome.
55
56 719 *Neuropsychopharmacology*. 36: 580–588.
- 57
58
59
60

- 1
2
3 720 Renou P, Ducreux D, Batouche F, Denier C (2008): Pure and acute Korsakoff Syndrome due
4
5 721 to a bilateral anterior fornix infarction. Arch Neurol. 65(9): 1252-1253
6
7
8 722 Rosenbloom MJ, Sullivan EV, Pfefferbaurn A (2003): Use of MRI to determine brain damage
9
10 723 in alcoholics. Alcohol Res Health. 27: 146–152.
11
12
13
14 724 Rueckert D, Sonoda LI, Hayes C, Hill DL, Leach MO, Hawkes DJ (1999): Nonrigid
15
16 725 registration using free-form deformations: application to breast MR images. IEEE Trans Med
17
18 726 Imaging. 18: 712–721.
19
20
21 727 Ryback R (1971): The continuum and specificity of the effects of alcohol on memory. A
22
23 728 review. Q J Stud Alcohol. 32: 991–1016.
24
25
26
27 729 Shear PK, Sullivan EV, Lane B, Pfefferbaurn A (1996): Mammillary Body and Cerebellar
28
29 730 Shrinkage in Chronic Alcoholics with and without Amnesia. Alcohol Clin Exp Res. 20:
30
31 731 1489–1495.
32
33
34
35 732 Smith SM, Jenkinson M, Woolrich MW, Beckmann CF, Behrens TE, Johansen-Berg H, *et al.*
36
37 733 (2004): Advances in functional and structural MR image analysis and implementation as FSL.
38
39 734 Neuroimage. 2004;23 Suppl 1:S208-19.
40
41
42
43 735 Smith SM, Jenkinson M, Johansen-Berg H, Rueckert Daniel, Nichols TE, Mackay CE, *et al.*
44
45 736 (2006): Tract-based spatial statistics: voxelwise analysis of multi-subject diffusion data.
46
47 737 NeuroImage. 31: 1487–1505.
48
49
50
51 738 Smith SM, Nichols TE (2009): Threshold-free cluster enhancement: Addressing problems of
52
53 739 smoothing, threshold dependence and localisation in cluster inference. NeuroImage. 44: 83–
54
55 740 98.
56
57
58
59
60

- 1
2
3 741 Squire LR, Amaral DG, Press GA (1990): Magnetic resonance imaging of the hippocampal
4
5 742 formation and mammillary nuclei distinguish medial temporal lobe and diencephalic amnesia.
6
7 743 J Neurosci. 10: 3106–3117.
8
9
10 744 Sullivan EV, Deshmukh A, Desmond JE, Lim KO, Pfefferbaum A (2000): Cerebellar volume
11
12 745 decline in normal aging, alcoholism, and Korsakoff's syndrome: Relation to ataxia.
13
14 746 Neuropsychology. 14: 341–352.
15
16
17
18 747 Sullivan EV, Lane B, Deshmukh A, Rosenbloom M J, Desmond J E, Lim K O, *et al.* (1999):
19
20 748 In vivo mammillary body volume deficits in amnesic and nonamnesic alcoholics. Alcohol
21
22 749 Clin Exp Res. 23: 1629–1636.
23
24
25
26 750 Sullivan EV, Marsh L (2003): Hippocampal volume deficits in alcoholic Korsakoff's
27
28 751 syndrome. Neurology. 61: 1716–1719.
29
30
31
32 752 Sullivan EV, Pfefferbaum A (2008): Neuroimaging of the Wernicke-Korsakoff syndrome.
33
34 753 Alcohol Alcohol. 44: 155–65.
35
36
37 754 Sullivan EV, Rosenbloom MJ, Serventi KL, Deshmukh A, Pfefferbaum A (2003): Effects of
38
39 755 alcohol dependence comorbidity and antipsychotic medication on volumes of the thalamus
40
41 756 and pons in schizophrenia. Am J Psychiatry. 160: 1110–1116.
42
43
44
45 757 Sullivan EV (2003): Compromised Pontocerebellar and Cerebellothalamocortical Systems:
46
47 758 Speculations on Their Contributions to Cognitive and Motor Impairment in Nonamnesic
48
49 759 Alcoholism. Alcohol Clin Exp Res. 27: 1409–1419.
50
51
52
53 760 Victor M, Adams RD, Collins GH (1971): The Wernicke- Korsakoff syndrome. Philadelphia:
54
55 761 F.A. Davis Co.
56
57
58
59
60

- 1
2
3 762 Visser PJ, Krabbendam L, Verhey FRJ, Hofman PAM, Verhoeven WMA, Tuinier S, *et al.*
4
5 763 (1999): Brain correlates of memory dysfunction in alcoholic Korsakoff's syndrome. *J Neurol*
6
7 764 *Neurosurg Psychiatry*. 67: 774–778.
8
9
10
11 765 Warrington EK, Weiskrantz L (1982): Amnesia: a disconnection syndrome?
12
13 766 *Neuropsychologia*. 20(3): 233-248.
14
15
16 767 Wechsler D (2001): WAIS-III: Wechsler Adult Intelligence Scale. Third Edit. Harcourt
17
18 768 Canada.
19
20
21 769 Wijnia JW, Goossensen A (2010) : Cerebellar neurocognition and Korsakoff's syndrome : an
22
23 770 hypothesis. *Med Hypotheses*. 75(2): 266-268
24
25
26
27 771 Zahr NM (2014) : Structural and microstructural imaging of the brain in alcohol use disorders.
28
29 772 *Handb Clin Neurol*. 125:275-290.
30
31
32
33
34
35
36
37
38
39
40
41
42
43
44
45
46
47
48
49
50
51
52
53
54
55
56
57
58
59
60

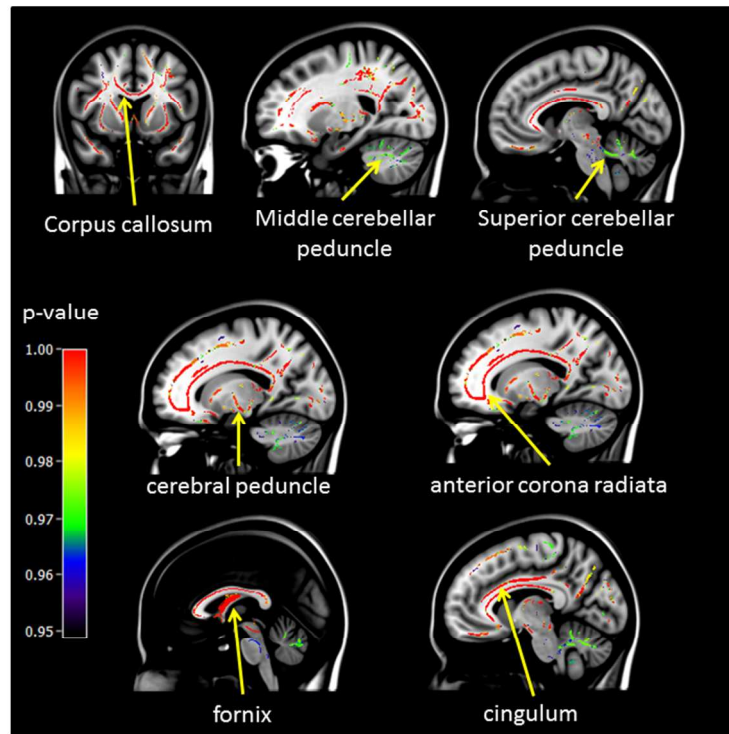


32
33
34
35
36
37
38
39
40
41
42
43
44
45
46
47
48
49
50
51
52
53
54
55
56
57
58
59
60

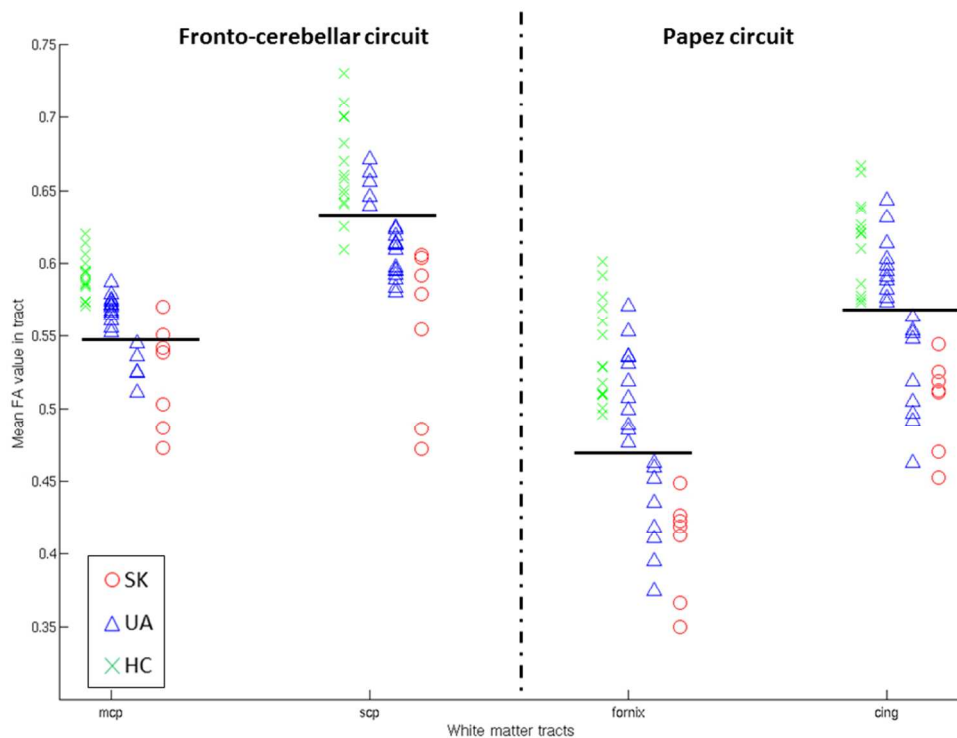
Voxel by voxel comparisons of FA values between HC and UA (top row), HC and KS (middle row) and UA and KS (bottom row) using non-parametric permutation tests (5000 permutations, FWE $p < 0.05$, TFCE for cluster-wise correction). p-value maps are shown as (1-p) images, displayed on a T1-weighted MRI in MNI space.

254x190mm (96 x 96 DPI)

1
2
3
4
5
6
7
8
9
10
11
12
13
14
15
16
17
18
19
20
21
22
23
24
25
26
27
28
29
30
31
32
33
34
35
36
37
38
39
40
41
42
43
44
45
46
47
48
49
50
51
52
53
54
55
56
57
58
59
60

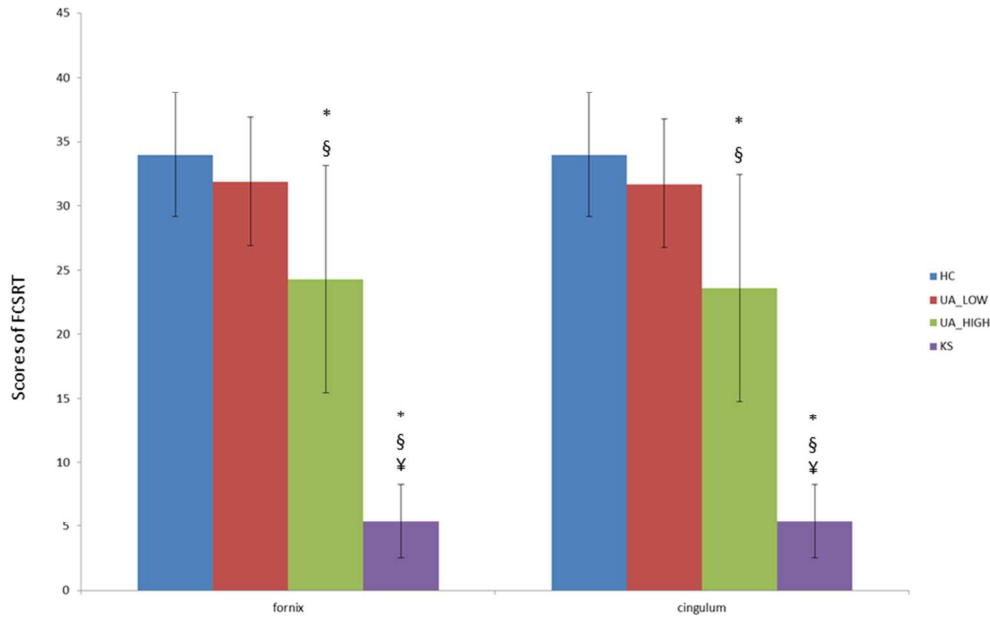


Voxel by voxel comparisons of FA values between HC and UASK using non-parametric permutation tests (5000 permutations, FWE $p < 0.05$, and TFCE for cluster-wise correction). p-value maps are shown as (1-p) images, displayed on a T1-weighted MRI in MNI space. 254x190mm (96 x 96 DPI)



Distribution of the mean FA values for the selected white matter tracts within the fronto-cerebellar circuit (mcp = middle cerebellar peduncle, scp = superior cerebellar peduncle) and the Papez circuit (fornix and cing = cingulum). Horizontal black lines represent the separation between the 2 identified clusters.
254x190mm (96 x 96 DPI)

Review



Episodic memory performance (sum of the 3 free-recalls of FCSRT) in the HC,KS and subgroups UA_LOW and UA_HIGH.

UA_LOW and UA_HIGH have been identified using k-means classification conducted on means FA values of significant fibre-clusters in the fornix and the cingulum bundle.

* : sig different from HC; § : sig different from UA_LOW; ¥ : sig different from UA_HIGH

254x190mm (96 x 96 DPI)

ew

Table 1: Demographical, clinical and neuropsychological description of the alcoholics with and without Korsakoff's syndrome and control participants

| Variable | HC (n=14) | UA (n=20) | KS (n=7) | Between-group comparisons* |
|------------------------------------|------------------------|-------------------------|------------------------|-------------------------------|
| Age (years) | 45.4±6.9 [31 - 55] | 45.2±8.1 [34 - 63] | 55.3±7.8 [44 - 67] | HC = UA; HC < KS UA < KS |
| Education (years) | 11.5±2.5 [7-15] | 11.9±1.7 [9-15] | 9.4±2.8 [6-15] | HC = UA; HC = KS UA < KS |
| Alcohol Use Disorders Test (AUDIT) | 3.2±1.4 [0 - 5] | 29.2±7.5 [9 - 39] | 16.6±14.0 [1 - 37] | HC < UA; HC < KS UA < KS |
| Beck Depression Index (BDI) | 3.6±3.2 [0 - 9] | 13.2±7.5 [2 - 27] | 9.0±10.0 [0 - 29] | HC < UA; HC = KS UA = KS |
| Mini Mental State (MMS) (/30) | 28.4±1.1 [27 - 30] | 27.4±2.2 [21 - 30] | 22.3±3.3 [18 - 27] | HC = UA; HC < KS UA < KS |
| MATTIS Total score | 141±2.0 [136 - 144] | 136± 6.7 [119 - 143] | 114±12.3 [95-132] | HC < UA ; HC < KS UA < KS |
| STAI ^a A | 27.2±7.2 [20 - 47] | 31.6±11.0 [20 - 59] | 33.4±6.4 [25 - 42] | HC = UA; HC = KS UA = KS |
| STAI ^a B | 33.4±7.0 [23 - 47] | 44.4±12.3 [28 - 66] | 42.0±11.1 [26 - 56] | HC < UA; HC = KS UA = KS |
| Fagerstrom ^b | 0.7±1.8 [0-6] | 4.8±3.6 [0 - 14] | N/A | HC<UA |
| Abstinence before inclusion (days) | N/A | 2.4±3.1 [1 - 13] | 53.7±29.4 [1 - 100] | UA<SK |
| Alcohol Use (years) | N/A | 29.6±9.3 [18 - 51] | NR | NA |
| Alcohol misuse (years) | N/A | 18.3±8.7 [2 - 30] | NR | NA |
| Alcohol dependence (years) | N/A | 9.5±6.7 [1 - 26] | NR | NA |
| Number of previous detoxifications | N/A | 3.3±2.6 [0 - 11] | NR | NA |

HC = Healthy Controls; UA = Uncomplicated Alcoholics; KS = Alcoholics with Korsakoff's Syndrome

NR = data not reported since it was not possible to obtain complete and accurate information regarding alcohol history in all KS patients.

1
2
3
4
5
6
7
8
9
10
11
12
13
14
15
16
17
18
19
20
21
22
23
24
25
26
27
28
29
30
31
32
33
34
35
36
37
38
39
40
41
42
43
44
45
46
47
48
49
50
51
52
53
54
55
56
57
58
59
60

Mean ± standard deviation and range [minimum – maximum] are reported.

* : Mann-Whitney U tests p<0.05

a : State-Trait Anxiety Inventory for adults , Y-A for “state anxiety” and Y-B for “trait anxiety” (Spielberger et al. 1983)

b : Fagerstrom (Heatherton et al. 1991)

For Peer Review

Table 2: Neuropsychological description of the alcoholics with and without Korsakoff's syndrome and controls

| Cognitive functions | Tasks | HC | UA | KS | Tests* |
|--|-----------------------------|------------|-------------|-----------|--------------|
| Intellectual abilities (WAIS III subtests) ¹ | Information | 9.1 ± 3.0 | 6.04 ± 3.0 | 5.2 ± 3.1 | HC>UA>KS |
| | Matrix reasoning | 10.4 ± 2.2 | 7.71 ± 2.26 | 5.0 ± 4.4 | HC>UA>KS |
| Episodic memory | FSCRT sum of 3 free recalls | 34.0 ± 4.9 | 28.5 ± 7.8 | 5.4 ± 2.9 | HC>UA>KS |
| Working memory (MEM-III subtests) ¹ | Forward visuospatial span | 8.5 ± 2.3 | 5.8 ± 1.5 | 5.1 ± 0.7 | HC>UA>KS |
| | Backward visuospatial span | 8.7 ± 2.5 | 5.3 ± 1.3 | 3.9 ± 0.7 | HC>UA; HC>KS |

HC = Healthy Controls; UA = Un complicated Alcoholics; KS = Alcoholics with Korsakoff's

Syndrome

(Mean ± standard deviation) and range [minimum – maximum] are reported.

* : Mann-Whitney U tests $p < 0.05$

¹ Standard scores

¥ : comparison with KS not done as no data available

WAIS III Wechsler Adults Intelligence Scale

FSCRT: Free and Cued Selective Reminding Test